



SCG.

**Supporting Mainstream &
SEND Schools With Their
Staffing Needs.**

01772 954200

spencerclarkegroup.co.uk



**Recruitment Agency
of the Year**



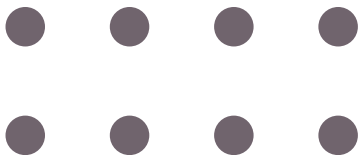
Introducing **SCG.**

Formed in 2017, we're an energetic, ambitious and forward thinking education recruitment agency based in the heart of the North West.

Whether you are looking for a Teaching Assistant for the day, a Teacher to cover maternity leave or a Headteacher for a 12 month contract, we can help!

Our education team pride themselves on taking the time to understand your schools complex needs and delivering suitable teaching staff with all the skills and experience you require.

When it comes to expertise, you won't be disappointed with our education team. Along with countless years of experience working in education recruitment, 75% of our team have experience working within the education sector as Teachers and Teaching Assistants!

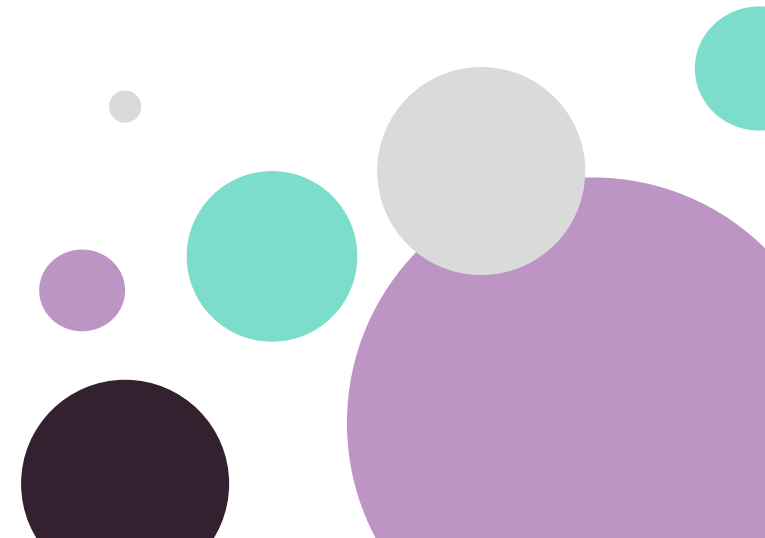


Mission.

To set the benchmark in our industry, dedicated to exceptional service, and constantly evolving to exceed expectations.

Vision.

To positively impact lives by connecting candidates and clients, enabling opportunities for shared success.



SEND Schools

KEY CONTACTS



Jamie Heath

Divisional Manager

01772 954200 / 020 3039 3555
jh@spencerclarkegroup.co.uk
linkedin.com/in/JH-SCG

Supports schools in these areas
Lancashire

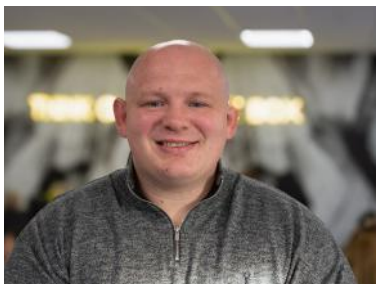


Paul Best

Managing Consultant

01772 954200
pb@spencerclarkegroup.co.uk
linkedin.com/in/PB-SCG

Supports schools in these areas
Lancashire



Niall Murphy

Managing Consultant

01772 954200
nm@spencerclarkegroup.co.uk
linkedin.com/in/NM-SCG

Supports schools in these areas
Manchester

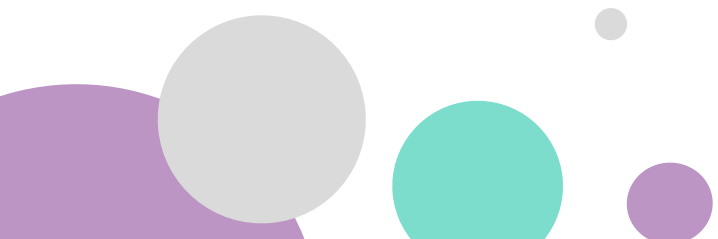


Destiny Buck

Recruitment Consultant

01772 954200
db@spencerclarkegroup.co.uk
linkedin.com/in/DB-SCG

Supports schools in these areas
East Lancashire



SEND Schools

KEY CONTACTS



Josh Clair

Lead Consultant

01772 954200

jtc@spencerclarkegroup.co.uk

[linkedin.com/in/JTC-SCG](https://www.linkedin.com/in/JTC-SCG)

Supports schools in these areas
Manchester



Emily Watson

Senior Consultant

01772 954200

ew@spencerclarkegroup.co.uk

[linkedin.com/in/EW-SCG](https://www.linkedin.com/in/EW-SCG)

Supports schools in these areas
Lancashire



Adam Chester

Lead Consultant

01772 954200

arc@spencerclarkegroup.co.uk

[linkedin.com/in/ARC-SCG](https://www.linkedin.com/in/ARC-SCG)

Supports schools in these areas
London



Liam Richmond

Senior Consultant

01772 954200

lr@spencerclarkegroup.co.uk

[linkedin.com/in/LR-SCG](https://www.linkedin.com/in/LR-SCG)

Supports schools in these areas
Greater Manchester

Primary Schools KEY CONTACTS



Jimmy Callagher

Managing Consultant

01772 954200

jc@spencerclarkegroup.co.uk

[linkedin.com/in/JC-SCG](https://www.linkedin.com/in/JC-SCG)

Supports schools in these areas

Fylde Coast, Preston, Lancaster



Joseph Chanter

Senior Consultant

01772 954200

jmc@spencerclarkegroup.co.uk

[linkedin.com/in/JMC-SCG](https://www.linkedin.com/in/JMC-SCG)

Supports schools in these areas

South Ribble, West Lancashire



Jolie Moon

Recruitment Consultant

01772 954200

jmo@spencerclarkegroup.co.uk

[linkedin.com/in/JMO-SCG](https://www.linkedin.com/in/JMO-SCG)

Supports schools in these areas

East Lancashire, Lancaster



Secondary Schools

KEY CONTACTS



Denni Marie-Bassett

Senior Consultant

01772 954200

dmb@spencerclarkegroup.co.uk

[linkedin.com/in/DMB-SCG](https://www.linkedin.com/in/DMB-SCG)

Supports schools in these areas

East Lancs



Liam Jones

Recruitment Supervisor

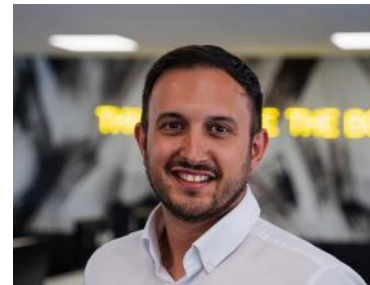
01772 954200

lj@spencerclarkegroup.co.uk

[linkedin.com/in/LJ-SCG](https://www.linkedin.com/in/LJ-SCG)

Supports schools in these areas

Preston, Lancaster, West Lancs



Matt Byrne-Fraser

Lead Consultant

01772 954200

mbf@spencerclarkegroup.co.uk

[linkedin.com/in/MBF-SCG](https://www.linkedin.com/in/MBF-SCG)

Supports schools in these areas

North West

School Facilities

KEY CONTACTS



Thomas Humphreys

Head of School Facilities

01772 954200

th@spencerclarkegroup.co.uk

linkedin.com/in/TH-SCG

Supports schools in these areas

Nationwide



Kaitlan Eggleston

Recruitment Consultant

01772 954200

ke@spencerclarkegroup.co.uk

linkedin.com/in/KE-SCG

Supports schools in these areas

Preston and East Lancashire



Emma Dobson

Managing Consultant

01772 954200

ed@spencerclarkegroup.co.uk

linkedin.com/in/ED-SCG

Supports schools in these areas

North West, Nationwide



Cameron Nicholls

Senior Consultant

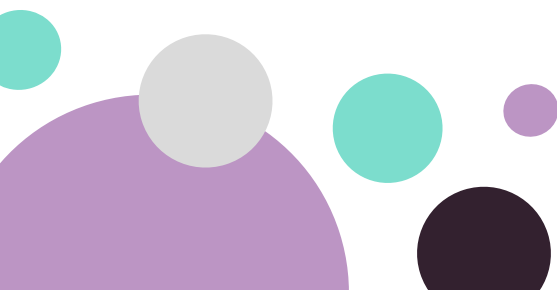
01772 954200

cn@spencerclarkegroup.co.uk

linkedin.com/in/CN-SCG

Supports schools in these areas

London





Nurseries

KEY CONTACTS



Olivia Bullock

Senior Consultant

01772 954200

ob@spencerclarkegroup.co.uk

[linkedin.com/in/OB-SCG](https://www.linkedin.com/in/OB-SCG)

Supports nurseries in these areas
North West

Headteachers

KEY CONTACTS



Matt Byrne-Fraser

Lead Consultant

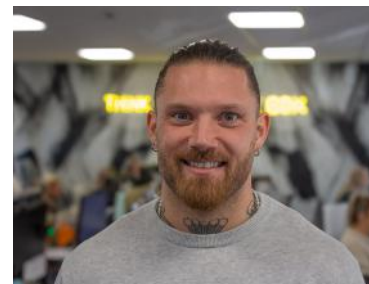
01772 954200

mbf@spencerclarkegroup.co.uk

[linkedin.com/in/MBF-SCG](https://www.linkedin.com/in/MBF-SCG)

Supports education providers in these areas

North of the UK



Dane Matthews

Senior Consultant

01772 954200

dm@spencerclarkegroup.co.uk

[linkedin.com/in/DM-SCG](https://www.linkedin.com/in/DM-SCG)

Supports education providers in these areas

South of the UK

EXPERTISE



Teachers & SEND
Teachers



Teaching Assistants
& SEND Teaching
Assistants



Headteachers &
Executive Headteachers



School Business
Managers



Cover Supervisors



SIMS Administrators



Cooking & Cleaning Staff



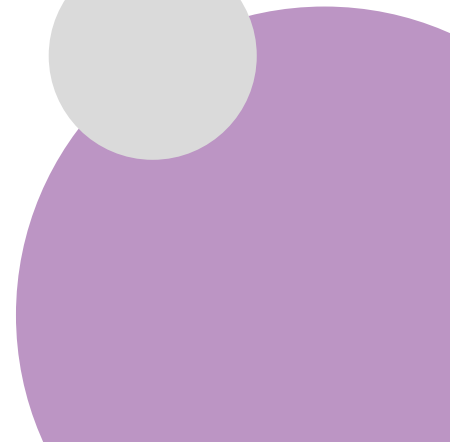
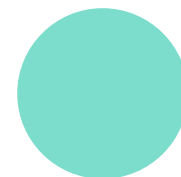
School Caretakers



Painters, Decorators &
Maintenance Staff



School Administrators &
Receptionists





What Sets Us **APART**



Comprehensive
pool of experienced
Teachers and
Teaching Assistants



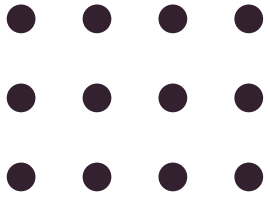
75% of our education
team are fully
qualified Teachers or
Teaching Assistants!



Candidates available
on a temporary,
permanent or
temp - perm basis



Unrivalled expertise
within school
recruitment



Contact us from 7am
for last minute cover



Regular school visits
to ensure your needs
are always being met



One-stop shop for
all your teaching and
facilities staff needs



APSCo Compliance+
accredited to go beyond
statutory safeguarding
standards (First time
score of 99.58%)



Why Schools Love

Working With Us

“Our consultant, Jamie Heath, found a number of highly skilled and experienced Teaching Assistants at short notice. He visited the setting so that he truly understood our needs as a school and what skills, personality and type of person we were looking for.

In doing this, it meant he could send only the people that he thought would fit and it has made the day to day running of the school much more successful.

Jamie listens to what we are looking for and he won't just send anyone as sometimes this is more of a hindrance than help! We have been nothing but impressed with Spencer Clarke Group since we started working with them.”

Helen Smith, Deputy Headteacher

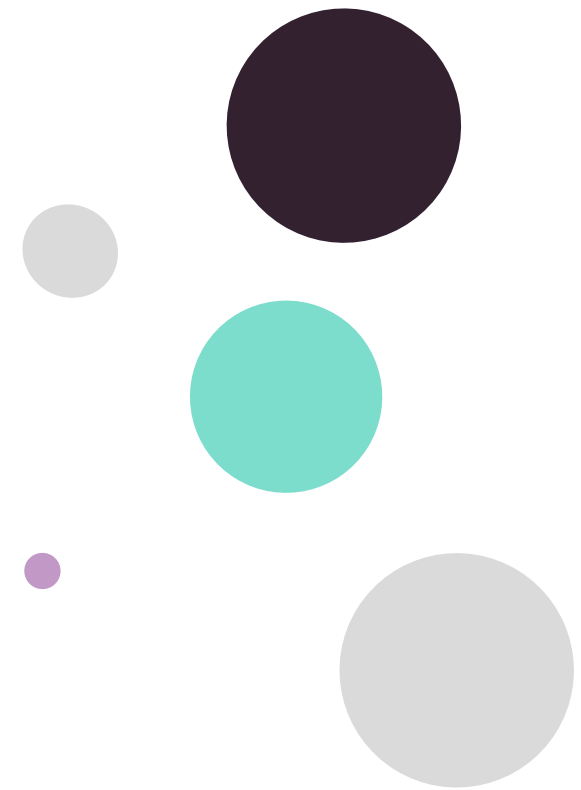
Why Schools Love **Working With Us**

“We were facing the challenge of managing a significant intake of new pupils. This sudden increase put a strain on our existing resources and required additional staff to ensure that we could maintain a high standard of education and support for all students.

Spencer Clarke Group provided an effective solution to our staffing challenge by supplying high-quality staff on a short-term basis. They took the time to understand our specific needs and promptly sent experienced professionals who seamlessly integrated into our team.

Spencer Clarke Group’s services have improved our operational efficiency. By providing qualified staff on a short-term basis, they alleviated the workload on our existing team, reducing stress and preventing burnout.”

Deputy Head, SEMH School





93%

Candidates
who move from
temporary to
permanent
contracts

91%

Candidates
who start work
within one
week of being
compliant

35%

Placed staff who
come from a
non-educational
background

100s

Schools we
work with

SCG's

Big Community Build

Here at Spencer Clarke Group, giving back to our local community is very important to us.

That's why we recently embarked on a mission to renovate a local school playground and turn it into a world of fun and creativity for 2-5 year old's.

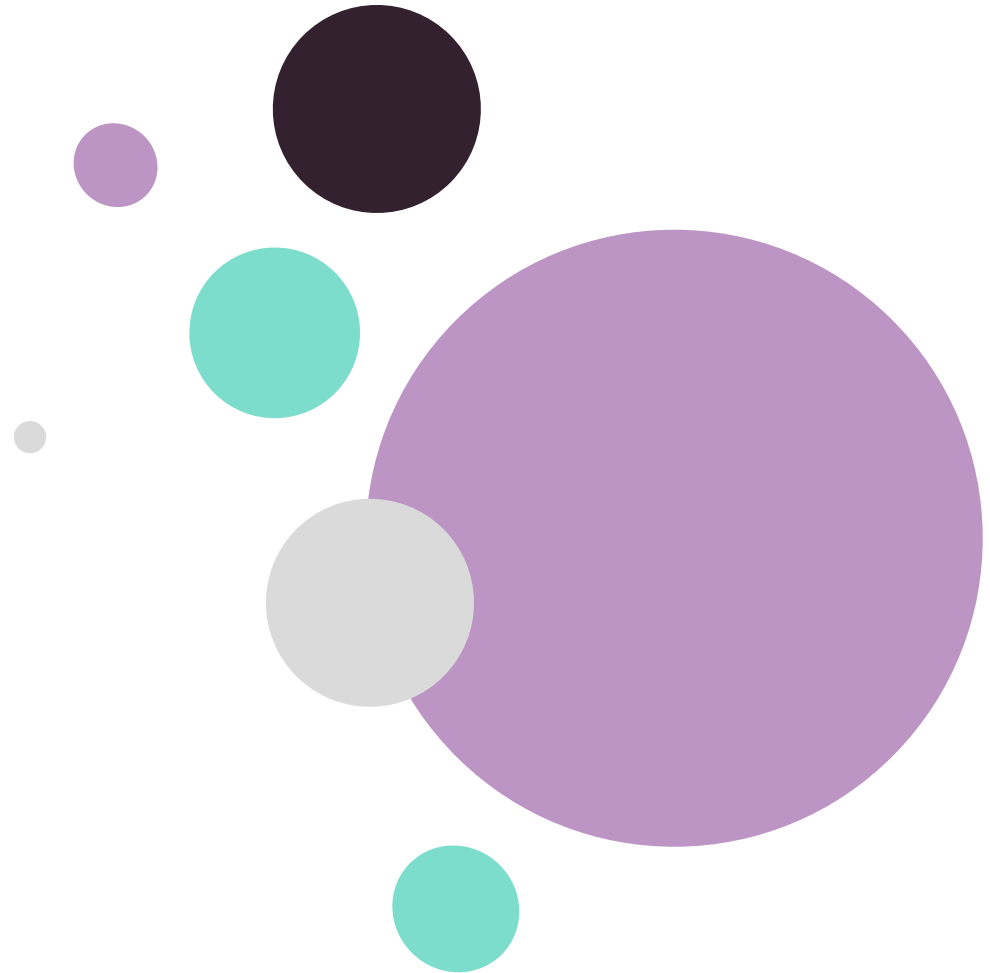
The aim of our big community build has been to help the school adhere to the Curiosity Approach, a practice under the Early Year Foundation Stage (EYFS) statutory framework.





Affording children the opportunity to learn through creative play and explore new environments is essential for their development and exactly why we have been so passionate about transforming what was a concrete jungle, into five extraordinary learning zones.

The children now have access to a construction zone, an outdoor library, a music wall, an art wall and a curiosity shed to ignite their imagination.



Recruitment Agency of the Year



spencerclarkegroup.co.uk

