

January 2026

Nottingham
&
Nottinghamshire
Care Association
Newsletter



CONTENT

3 – 4	2025 Round-Up
5	Looking Ahead
6	Spring Conference
7	New Commercial Partners
8	Nottinghamshire County Council Provider Event
9	Nottinghamshire County Council Care Services Sustainability Funding
10	Nottingham & Nottinghamshire ICB
11	Skills for Care
12 – 13	Institute of Health and Social Care Management
14	Surveys
15 – 16	DSPT – Better Security, Better Care
17 – 21	NCA Partnership Section
22	NCA Membership

ROUNDUP 2025

A Year of Growth, Partnership and Engagement

2025 has been a strong and productive year for Nottingham & Nottinghamshire Care Association (NCA), with progress across partnerships, events, and member support, reinforcing NCA's role as the voice of independent care providers across the county.

New Commercial Partners

During the year, NCA expanded its commercial partner network, welcoming four new partners:

- [Anthony Collins Solicitors](#) – offering specialist legal expertise for the health and social care sector
- [Aston Brooke Solicitors](#) – supporting international recruitment for adult social care
- [Empathika](#) – is an “intelligent hub” for care operations that unifies multiple management functions into a single platform
- [Medicine Drop](#) – providing innovative solutions for medication management and delivery

These partnerships strengthen the range of practical, high-quality support available to NCA members.

Spring and Autumn Conferences

Both the Spring Conference and Autumn Conference were a success in 2025, with strong attendance and positive feedback.

The conferences provided:

- Insightful and relevant speakers
- Updates on policy, regulation, and sector priorities
- Valuable opportunities for networking and peer learning

They continue to be an important forum for bringing the local care sector together and sharing best practice.



Member Engagement and Sector Support

Throughout 2025, NCA continued to:

- Communicate regularly with members through updates and newsletters
- Represent provider voices within the wider adult social care system
- Support collaboration between providers, commissioners, and partners
- Renew links with IHSCM, providing free access to all NCA members. If you do not have your access code, please contact us to receive it.
- New Certificate of Membership. Email contact@nca.care if you would like one to display.



LOOKING AHEAD 2026

NCA enters 2026 with significant developments planned:

New Website Launch

A new NCA website will be launched to improve accessibility, communication, and signposting to support, events, and resources.



We are also delighted to welcome another new two commercial partners, Christie & Co and Solutions for Care, further strengthening the range of practical support available to members.



DSPT Support Provider for Nottingham and Nottinghamshire

NCA will become the local DSPT support provider for the Better Security, Better Care programme, covering Nottingham and Nottinghamshire. along with this we will employ a new member of staff dedicated to this role.

Better Security, Better Care Programme Delivery

Better Security, Better Care is designed to help adult social care providers keep information safe across both digital and paper records. The programme supports organisations to complete the Data Security and Protection Toolkit (DSPT) — the annual self-assessment demonstrating good data protection and cyber security practices.

As part of this work, NCA will be clustering with [Derby Care Association](#) and [Lincolnshire Care Association](#), strengthening regional collaboration and shared learning across the East Midlands.

These developments further strengthen NCA's role in supporting providers with compliance, digital confidence, and good governance.

SAVE THE DATE

Nottingham & Nottinghamshire Care Association

23rd April 2026

9:30 AM - 4:00 PM

Albert Hall, Nottingham



For the Adult Social Care Sector



Welcome To Our New Commercial Partners

We're excited to share that Nottingham & Nottinghamshire Care Association has welcomed two new commercial partners who will be supporting our members across the city and county.

These partnerships strengthen our mission to champion high-quality care, provide practical support to providers, and bring trusted expertise into our local sector.

Our New Partners

Christie & Co

A leading specialist in business property consultancy with over 90 years of experience supporting sectors including care, childcare, health services, pharmacies, and more. They provide valuations, brokerage, and advisory services, helping care providers buy, sell, invest, or plan strategically with confidence. Their UK-wide team of sector experts offers deep market insight and professional guidance throughout every stage of a business transaction.

Solutions for Care

A free support service for the care sector, offering a wide range of practical solutions designed to reduce costs without compromising quality. Their offer spans food and catering support, veterans outreach, nursing and housekeeping supplies, waste disposal, recruitment, stationery and office supplies, printing, hydration products, communications services, and staff rewards. They focus on making providers' lives easier by supporting residents, staff, and day-to-day operations across care settings.

What This Means for Members

- Access to exclusive offers or resources
- Opportunities for learning, innovation, and collaboration
- Stronger links between local providers and sector-leading organisations

We're looking forward to working closely with both partners and sharing more about how they can support you in the coming months.

If you'd like to connect with either organisation or learn more about their offer, keep an eye on our upcoming events and communications.

Nottinghamshire County Council Provider Engagement Event

 Thursday, 8th January 2026

 1:00 pm – 2:30 pm

 Microsoft Teams

Thank you to everyone who attended our online meeting on Thursday, 8th January.

For those who were unable to attend, we understand that circumstances can arise and are pleased to share the key materials from the session:

- Slides: The presentation slides are available to view/download.
- Recording: A full recording of the meeting has been uploaded to our YouTube channel and can be accessed via the provided link.

In addition, Nottinghamshire County Council confirmed that they intend to organise their own meetings with each area within the provider market to discuss fee uplifts in the very near future. The Council will forward the proposed dates to the NCA, and we will share these details with you as soon as they are received.



[YouTube Link](#)

Nottinghamshire County Council Care Services **Sustainability Funding**

The fund is limited to £750,000 for the claim period 1st April 2025 to 31st March 2026 and claims will be processed throughout the period or until the fund is spent. Applications must be made via an online DASH form, the link to which is provided below:

[Provider Sustainability Grant 2025/26 application form](#)

Please upload evidence for your claim onto the DASH form. If you have difficulties in attaching your evidence to your application form, please email your evidence to Marketshapingteam@nottsccl.gov.uk, and include your application reference number as well as the date of your application. We will not be able to process your application if the evidence is not received.

You will receive an acknowledgement of your submission. Please note the CSC reference number as this will remain the same throughout the life of the claim and we will process the claim under that number. As part of your application, you will be asked for your NCC vendor number, to avoid any delays in processing your payment with our finance team.



If you have any questions or enquiries in relation to the PSG, please email

Marketshapingteam@nottsccl.gov.uk

Webinar Invitation: Decaffeinated by Default – Nottinghamshire Care Providers

Join us for an informative session on the **Decaffeinated by Default** project, an initiative supported by [Nottinghamshire Integrated Care Board \(ICB\)](#) to enhance the health and wellbeing of individuals. This webinar will explore:

- **What the project is about** – Learn the aims and approach behind introducing decaffeinated drinks as the default option.
- **The benefits of decaffeination** – Understand how reducing caffeine intake can support better sleep, hydration, and overall wellbeing for residents.
- **Success stories from other areas** – Hear about positive outcomes from regions that have trialed this approach, including improvements in care home resident comfort and reduced incidents linked to caffeine consumption.

How your care provider can get involved – Find out the practical steps to participate in the project and the support available to help you implement this change.

Who should attend?

Care home/Care provider managers, staff, catering teams, and anyone interested in improving resident wellbeing through simple, evidence-based changes.

Thursday 29th Jan 2026 | 14:00 – 14:45

Register for the event here: Decaffeinated by Default: [Care Provider Webinar](#)

We look forward to having you attend the event!

Midlands Regional Conference – Evolving Together

Tuesday 10 February 2026 | 10:00 – 15:30 | Birmingham

Last years conference was amazing and our Skills for Care Midlands Team cannot wait to welcome you back for yet another great event!

Building on the momentum of Midlands Moving Forwards, we're now on the journey to Evolving Together – and we want you with us. This year's theme centres on the Adult Social Care Workforce Strategy, exploring how we can attract, retain, train, and transform our workforce to meet the challenges ahead. You'll hear from inspiring speakers across the sector, discover best practice from across the region, and connect with peers who share your passion for delivering high-quality care.

What to expect

- Insightful sessions on recruitment, retention, training, and service transformation
- A range of expert speakers and sector leaders
- Networking opportunities with professionals from across the Midlands
- Interactive exhibition stands showcasing tools, resources, and support
- A chance to develop a personal or organisational action plan to take away
- Ongoing support from the Skills for Care Midlands Team throughout 2026/27

Find all the information and how to book here – [Midlands regional conference – evolving together](#)

The [IHSCM](#) are delighted to share the launch of our **IHSCM Great Leadership in Tough Times Theatre**, taking place at **Care Show London 2026**.

This year's programme brings together a dynamic, practical, and inspiring series of sessions designed specifically for leaders and managers navigating the most complex challenges across health and social care.

Across the full **2-day programme**, attendees will take part in fast-paced 'How To' sessions exploring how to:

- Lead with compassion in uncertainty
- Communicate clearly under pressure
- Manage change with confidence
- Build resilient, high-performing teams
- Strengthen culture and organisational resilience
- Think and act system-wide
- Improve operational flow and reduce pressure

Whether supporting a team, a service, or an entire organisation, the IHSCM Great Leadership in Tough Times Theatre will offer the insight, inspiration, and practical strategies leaders need to thrive through challenges, complexity, and change.

If your members or colleagues are committed to developing their leadership and supporting others to do the same, this is absolutely the place to be. **Registration is now open:** careshowlondon.co.uk/ihscm

Please feel free to share this announcement across your networks — we'd love to welcome as many hub partners and members as possible.



CATCH UP WITH IHSCM

We have two new leadership courses and lots of sessions for you to **access for free** as part of your Care Association membership. Whether you're new to leadership or a seasoned pro, this is your chance to build practical leadership skills and earn points towards your CPD to gain IHSCM's High Performance Leadership Awards

TWO NEW SHORT COURSE MASTERCLASSES

**Institute of
Health &
Social Care
Management**

Short Course Masterclass



**CPD
CERTIFIED**
The CPD Certification Service

**Deputy Managers
Leadership Programme**

LEARN **ADAPT** **CREATE** **SHARE**

**Institute of
Health &
Social Care
Management**

Short Course Masterclass




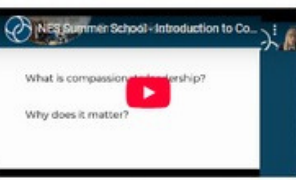
**SYSTEMS
LEADERSHIP**


LEARN **ADAPT** **CREATE** **SHARE**


CHECK OUT OUR ON DEMAND PAGE

- How to confidently have courageous conversations
- **Introduction to Compassionate Leadership**
- How to communicate effectively
- **AND MUCH MORE...**

How to build relationships internal and external


Introduction to compassionate leadership


How to create psychologically safe teams


How to communicate effectively


Not registered? Click on the link **here and insert the code for your care association**

Surveys

We have been approached by two researchers who are seeking input from Home Care managers for brief surveys. Participation is voluntary, and both surveys offer incentives for completion. Details are provided below:

1. KCL – Pro-Health Study (Pilot Survey)

Researcher: Abi Burgess, King's College London

Purpose: Pilot survey for the pro-health study

Who: Managers of homecare services (any kind – independent, franchise, etc.)

Time: 10–15 minutes

Incentive: Entry into a prize draw for a £250 voucher; possibility to participate in later phases of the study

Survey Link: https://qualtrics.kcl.ac.uk/jfe/form/SV_1LYUcXv3PzuZbv0

Contact: abigail.2.burgess@kcl.ac.uk

2. DeNPRU-QM – Home Care Agencies & Dementia/MS Support

Researcher: NIHR Dementia and Neurodegeneration Policy Research Unit, Queen Mary University of London

Purpose: Collect data on how home care agencies support people with dementia and/or multiple sclerosis

Who: Home care agency managers or senior staff in Lancashire & South Cumbria; North East London; Nottingham & Nottinghamshire; Sunderland & Newcastle

Incentive: £15 voucher per completed survey (max one per agency per area)

Survey Link: https://appletree.qualtrics.com/jfe/form/SV_01jYVsp30Nw9BnE

Contact: Ayoni.darby@qmul.ac.uk / Claudia.cooper@qmul.ac.uk

If you are interested, please follow the links above to participate or contact the researchers directly for more information.

Thank you for considering contributing to these important studies.





DSPT

Better Security. Better Care.



Cyber Security – Back to Basics

We're launching a new series of short, practical DSPT support webinars designed to make data security simple and jargon-free.

This first session covers the essentials: strong passwords, password managers, MFA, staff training and why updates matter — all explained in a clear, accessible way.

 24th February

 13:00–13:30

 Online via Microsoft Teams

Perfect for owners, managers, admin teams and frontline staff.

Book your place **HERE**  <https://buytickets.at/dspt>



DSPT **Cyber Security** **Back to Basics**



NCA Commercial Partner Offers for NCA Members





For over 10 years, Solutions for Care, as a trusted partner, have provided FREE support to the care sector, consistently helping providers and staff save time and money.

SolutionsforCare, providesupport in solvingthe headachesof Care Management with a seamless and transparent approach towards efficiency and cost effectiveness.

Solutions	
 Food cost reviews, menu planning, allergen support, recipes, nutrition, training	 Recruitment exclusively for the Health Care Sector
 Housekeeping budget management	 Stationery and office supplies - free audit, advice and supply
 Energy efficiency, carbon footprint reduction	 Bespoke print service that includes large font size and graphics
 Training and workforce skills, face to face and E-Learning	 Hydration solution stimulating senses of sight, smell and taste
 Care Management Systems for person centred Care Planning	 Communications Services that are Service User specific
 Cost effective waste management	 FREE Staff Rewards, employee benefits programme

“Exceptional, kind, personal customer care guaranteed to relieve those headaches”

CARE ASSOCIATION OFFERS

Call today on
0191 516 6792
QUOTE 'CA OFFERS'



FREE

licences to online
food support
platforms and
various other
offers including
cashback



FREE

Nursing and
Housekeeping
supplies for
one week



FREE

Rewards
APP for all
care staff



FREE

Support for
your Veteran
Residents



Call us
today!

Email: info@solutionsforcare.co.uk

www.solutionsforcare.co.uk



NOTTINGHAM & NOTTINGHAMSHIRE
CARE ASSOCIATION



Legal, PR and Insurance tactics to protect your people, reputation and bottom line

Howden, Alder and Bevan Brittan invite you to register for their upcoming seminar – an in-person event exclusively for directors and senior leadership teams, on Wednesday 25th February.

Major incidents can hit any care setting without warning. This seminar equips leadership teams to respond confidently across legal, PR and insurance dimensions—covering how to manage investigations, control the narrative, activate the right cover and make fast, informed decisions. You'll hear a senior care leader's real-world experience, engage in interactive sessions and Q&A, and leave with practical strategies and case studies to protect your organisation's reputation, finances and future.



How care homes build claims defensibility and trust

Insurance claims can be stressful, but they don't have to be chaotic. In their latest podcast episode, our partner Howden discuss what you need to do from the first hour after an incident, how to manage CQC scrutiny and the importance of staff training. The conversation then moves to outline the insurance considerations you need to make.

A must listen that offers practical steps to help care providers to reduce risk and protect your residents.



We would like to thank all of our commercial partners for their continued support of the UK care sector, and of Nottingham and Nottinghamshire providers. Your support helps us keep moving the sector forward.



Please click on the logo and you will be directed to our commercial partners websites

Keep Your Membership Active and Keep Benefiting!

We will continue to reach out to members over the past few weeks to confirm membership statuses and ensure all contact details are up to date. This outreach will continue in the coming weeks, so if you haven't heard from us yet, don't worry, we'll be in touch.

In the meantime, if you think your membership may have expired or if you're unsure of your current status, please contact us at contact@nca.care. You can also use this opportunity to check and update your contact details so we can stay connected.

★ **Why Stay a Member of the Nottinghamshire Care Association?**

Join a vibrant, growing community dedicated to enhancing care provision across Nottinghamshire. Whether you're a care provider, professional, or advocate, NCA is here to support you and amplify your impact.

★ **Membership Benefits Include:**

- 🔍 Access to cutting-edge industry insights and best practices
- 👥 Networking opportunities with sector leaders and care experts
- 📱 Professional development resources and training opportunities
- 🌐 Exclusive access to member-only events and workshops
- 🗣️ A platform to voice your ideas and shape the future of care

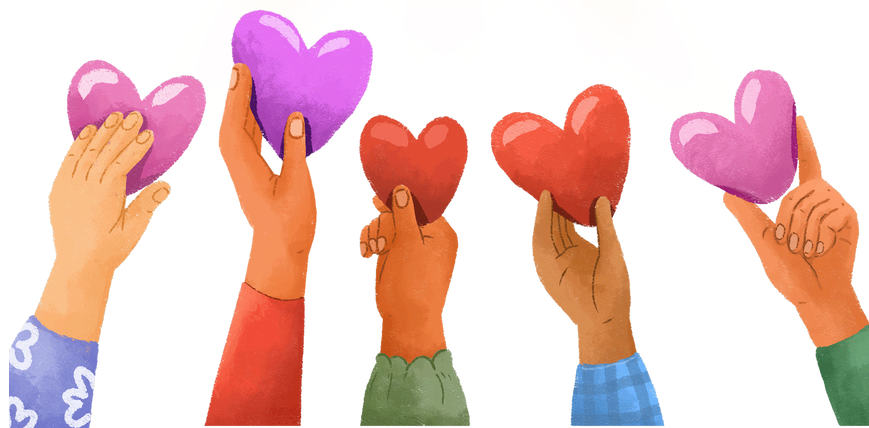


Since 2023, we've seen the real value of collaboration, from successful conferences and ongoing provider engagement to the impact of the Nottingham & Nottinghamshire Open Discussion Group (NODG). We're also proud of our strong partnerships with Nottingham City Council, Nottinghamshire County Council, and the Nottingham and Nottinghamshire Integrated Care Board (ICB).

JOIN HERE



*Please share your good
news stories with us.
Help us put care in the
spotlight!*



contact@nca.care

