

FALL for ALL!

(and winter too)

2026



TAKE a LOOK at the BOOK... and call or email:

Nancy Provda (West Coast): nancyprovda@gmail.com, 415.867.5837

Erica O'hara or Sara Ecker: erica@fathat.com saraecker@fathat.com, 802.296.6646



“a journey of a thousand miles begins with a single step ... “

In 1979 I made a floppy, roll-up hat for “whatever shape your HEAD’S in” for a wonderful friend of mine. With my mom’s delightful set of directions on how to wear your hat, the shapeable, drapeable very Fat Hat was born and the Fat Hat Factory journey began. Sometime in 1984 in the middle of a perfectly ordinary day I had a moment of absolute clarity ... why not also make clothing for whatever shape YOU’RE in? Life is simply too short to dress in uncomfortable clothing!... and so the F.H. Clothing Co. was off and running with easy-to-wear, easy care clothing, **“made in the u.s.a ... on purpose.”** E-commerce is a very tiny part of the business instead we love meeting you in person or on the phone where our expert clothing consultants can help you find exactly what you’re looking for.

It’s been an amazing adventure and after 46 years we’re still dedicated to making “clothing that loves you just the way you are”. We’re comfortably situated in our rambling old barn on Rt 4 in Quechee Vermont. Our clothing is designed here, manufactured in New York City, sold in our retail store, on the phone and in Art-To-Wear boutiques nationwide. **Loyal and enthusiastic customers** near and far have grown to love our fabrics, our simple, flattering designs, our high quality and our sense of humor.

The studio/store, the clothing, my daughters who hold it all together, my co-workers who make everything possible, the ideas and the dreams all fit me as comfortably and flexibly as my very first Fat Hat. Each new idea we think up is welcomed with a delightful sense of “can this really work?” We smile at our strange techniques, we groan in unison over our errors, we bask in the sunshine of our success and **we always make sure we sew at least one strong thread of good humor into each new garment we make ...** and if one day when you’re wearing our clothing, you break into an uncontrollable smile, perhaps it’s because you’ve touched that one strong thread that holds us together.

A handwritten signature in black ink, appearing to read 'Joan', written in a cursive style.

Joan Ecker, Owner & Designer
Fat Hat Clothing Co.

Travelknit Fall



2026 fall/winter





DOUBLE OR NOTHING
TKF26-DN



IT'S NO YOKE
TKF26-NY



OFF KILTER POCKET TEE
TKF26-OK



EAST SIDE COWL
TKF26-ES

TRAVELKNIT FALL



PEPLUM CARDY
TKF26-PC



THE DRESS
TKF26-TD



PENCIL PANT
TKF26-PP



COMFY CROP
TKF26-CC

TRAVELKNIT FALL



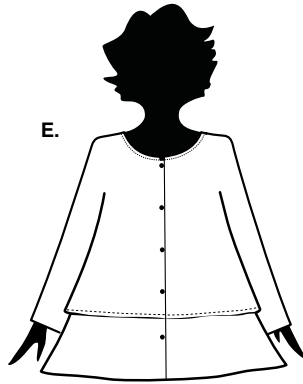
THE EASY SKIRT
TKF26-SK



THE SPANTALOON
TKF26-SN

TRAVELKNIT FALL

p. 2



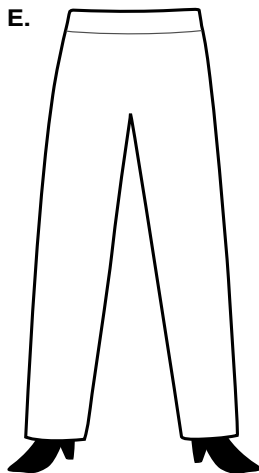
E. PEPLUM CARDY
TKF26-PC.....\$83

We've given this one a very small, Mandarin style neckline, 5 buttons and angles darts that pull the side seams up with a fun light hearted peplum style look. A nice way to "dress-up" everything you put it over. Center Back 26"



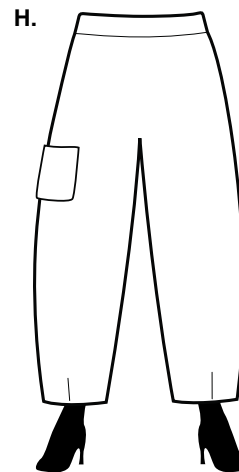
F. THE DRESS
TKF26-TD.....\$86

This long sleeved dress always comes with a long, solid black bodice, curved low with one side lower than the other, a slightly rounded skirt and a big, buttoned pocket on the right side for fun.



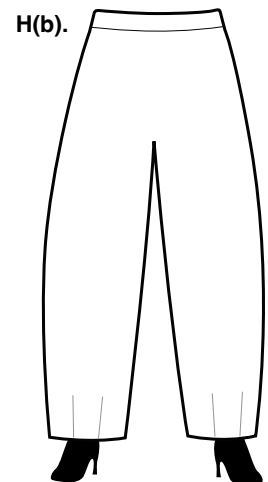
G. PENCIL PANT
TKF26-PP.....\$59

If leggings aren't to your liking and wider legs just don't do it for you, we've made this Pencil Pant that should be just right: straight, narrow but definitely not tight. 15" ankle opening and a 40" outseam.



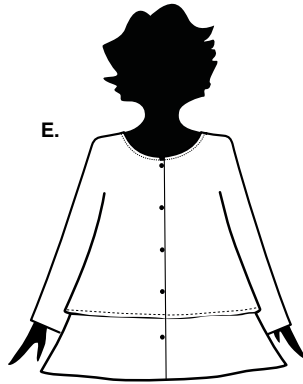
H. COMFY CROP
TKF26-CC.....\$63

We make this cropped pant year in and year out. It's the easiest, most flattering, most loved by all, pant we've ever made. Every season the Comfy Crop is a customer favorite-ever-so-comfy, looks-good-on-everyone pant. 36" outseam. The Comfy Crop is a longer version!



H(b). COMFY PANT
TKF26-CP.....\$66

p. 2

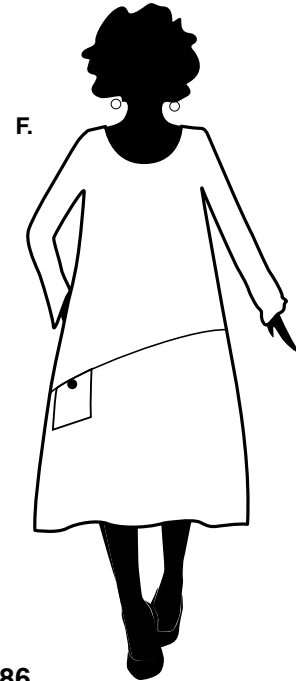


E.

E. PEPLUM CARDY

TKF26-PC.....\$83

We've given this one a very small, Mandarin style neckline, 5 buttons and angles darts that pull the side seams up with a fun light hearted peplum style look. A nice way to "dress-up" everything you put it over. Center Back 26"

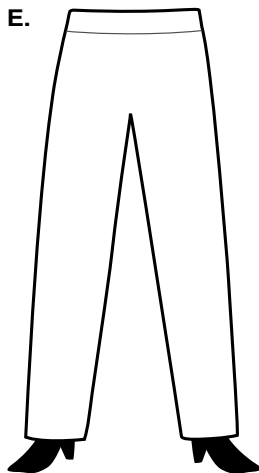


F.

F. THE DRESS

TKF26-TD.....\$86

This long sleeved dress always comes with a long, solid black bodice, curved low with one side lower than the other, a slightly rounded skirt and a big, buttoned pocket on the right side for fun.

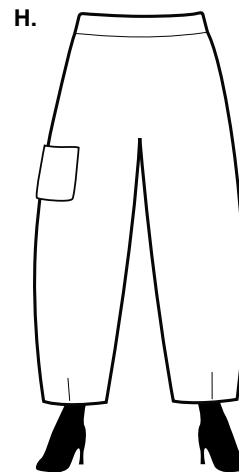


E.

G. PENCIL PANT

TKF26-PP.....\$59

If leggings aren't to your liking and wider legs just don't do it for you, we've made this Pencil Pant that should be just right: straight, narrow but definitely not tight. 15" ankle opening and a 40" outseam.

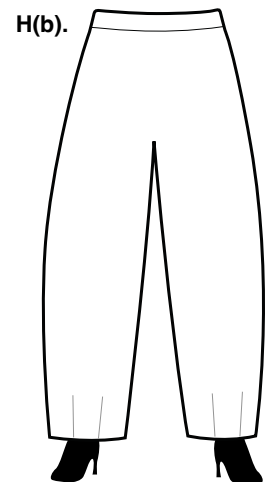


H.

H. COMFY CROP

TKF26-CC.....\$63

We make this cropped pant year in and year out. It's the easiest, most flattering, most loved by all, pant we've ever made. Every season the Comfy Crop is a customer favorite-ever-so-comfy, looks-good-on-everyone pant. 36" outseam. The Comfy Crop is a longer version!

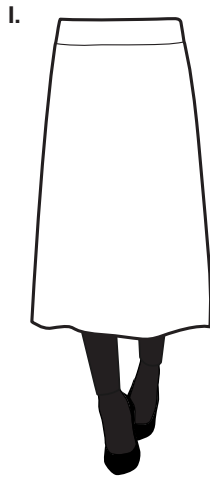


H(b).

H(b). COMFY PANT

TKF26-CP.....\$66

p. 3

**I. THE EASY SKIRT**

TKF26-SK.....\$67

Nothing could be easier than this long, yoga waisted casual pull-on skirt. Put it on with a pair of boots and a big sweater and you're set for just about anything that comes your way. Center Back 32"

**J. THE SPANTALOOON**

TKF26-SN.....\$63

Our "almost famous" all-in-one skirt with leggings. It sells to just about every size, shape and age group and without it, we'd have nothing to wear.

BeSPOTTED



2026 fall/winter



aka Fat Hat Clothing Co.



EVERYDAY JACKET
BD26-EJ



NIGHTS OUT JACKET
BD26-NO



TWO POCKET TEE
BD26-TP

BESPOTTED



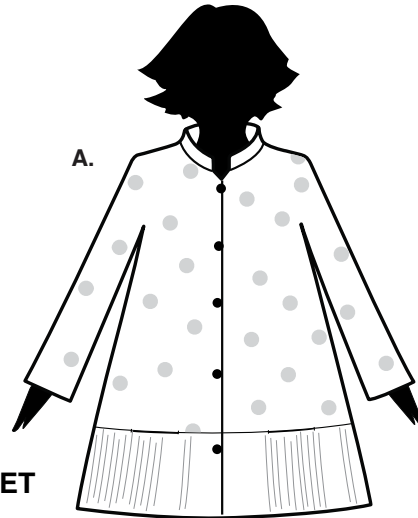
CROSTOWN TEE
BD26-CT



SPANTALOON
BD26-SN

BESPOTTED

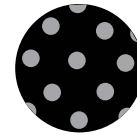
We love our Double Knits... especially our Big Dotted Grey ones. Each garment is fun and flattering, light-hearted and stylish. We've added a few stripes here and there just for the whimsy of it all. Each garment comes only as shown. This fabric, 70% poly/ 28% rayon / 2% spandex is easy to care for (wash cool and hang to dry, fluff in a cool dryer) and the garments are very easy to wear. Available for delivery starting in August. XS-1X



A. EVERYDAY JACKET
BD26-EJ.....\$64

I love the look of this longish jacket with the vertical striped band on the lower part and the two hidden pockets in the band. Those pockets make me love it even more. We've given it a flattering neckline and short stand up collar and just the right length for a fall jacket. Center Back 31"

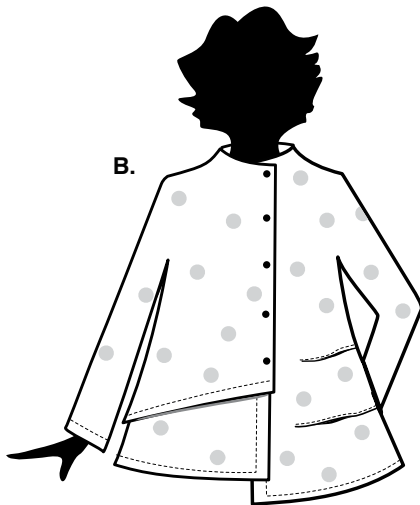
SWATCHES



Charcoal
big dots
on Black

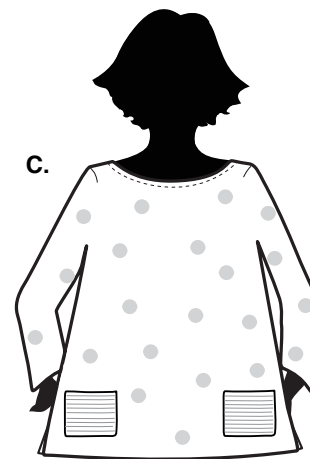


Charcoal thin
lines on Black



B. NIGHTS OUT JACKET
BD26-NO.....\$69

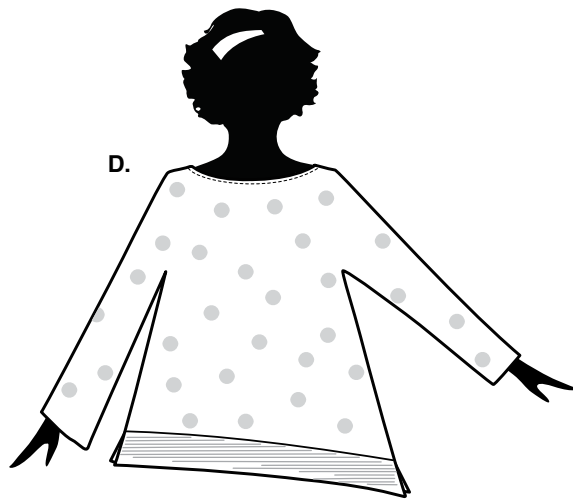
If you're looking for something a little off beat and a little arty...try the Nights Out Jacket. The angled side darts, two on the right, one long one on the left, give it pizzazz and flare. The simple neck has no collar but take a look at how it comes up in a flattering, vogueish way. Center Back 27"



C. TWO POCKET TEE
BD26-TP.....\$58

A basic tee in big dots with a gentle scoop neck and two contrasting pockets done in stripe... simple enough and perfect any time of day or night for any occasion on just about any body. Center Back 24.5"

p.2

**D. CROSTOWN TEE**

BD26-CT.....\$58

It has a flattering bateau styled neck, a comfortable and a NOT over-sized a-line fit with a diagonal striped slash that's longer on the left than the right. It's a "stylin" tee with a whole bunch of personality. Center Back 25"

E. SPANTALOON

BD26-SN.....\$56

You know this skirted legging well...if you don't, it's time to try it out. The skirt comes in big dots to match any one of the interesting tops we've designed.

Cotton Down



2026 fall/winter





TRAVEL JACKET
CD26-TJ



EVERYDAY JACKET
CD26-EJ



JACKETY JACKET
CD26-JJ



POCKET TUNIC
CD26-PT

COTTON DOWN



OVERSIZED COVERALL
CD26-CA



DRESSED UP TEE
CD26-DT



VEST
CD26-VT



SASSY COWL
CD26-SC

COTTON DOWN



BOXY TURTLE
CD26-BX



BOXY TURTLE 2" LONGER
CD26-BX2



ZIPPY JACKET
CD26-ZJ

COTTON DOWN



FAT HAT
CD26-FH



MAD HATTER
CD26-MH

COTTON DOWN

Mid-April...WOW!! that's when our Cotton Down Collection will start delivering this year. Each year deliveries start earlier and earlier with customers always ready for new colors and new styles. Our classic 100% cotton, flat-backed rib is knit, dyed and finished for us in North Carolina. The colors are beautiful and the styles are classics. Available this year in Grey heather, introducing Amethyst and Winter Green and carrying forward Azure, Sunflower, Chili Pepper, Fern, Bachelor's Button, Black, Cherry, Cream. Machine wash cool, lay flat to dry. XS-1X unless otherwise noted.

SWATCHES



Grey
Heather



Amethyst



Winter
Green



Azure



Bachelor's
Button



Fern



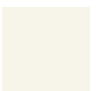
Sunflower



Chilli
Pepper



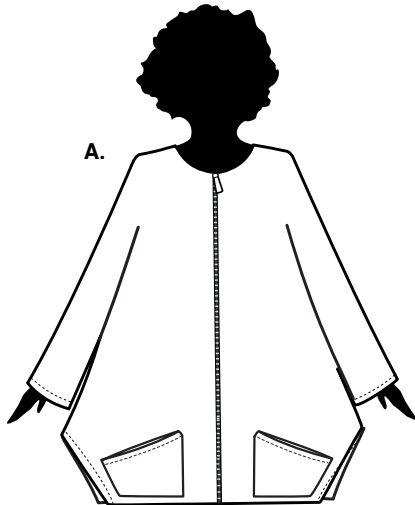
Cherry



Cream



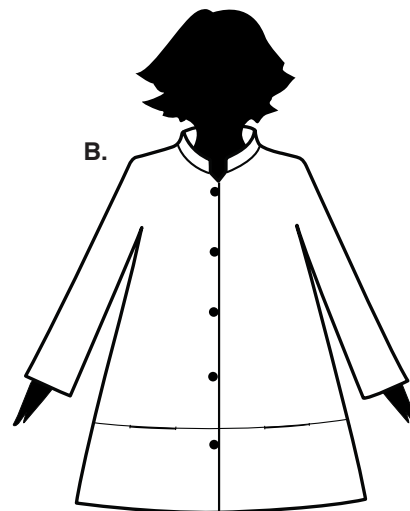
Black



A.

A. TRAVEL JACKET
CD26-TJ.....\$77

We've took an old favorite, removed the collar, shortened the body, and gave it our signature zipper. It looks great! The pockets and the body shape give this indoor/outdoor jacket all the pizzazz it needs. Shorter than the Sassy Cowl. Center Back 28"



B.

B. EVERYDAY JACKET
CD26-EJ.....\$86

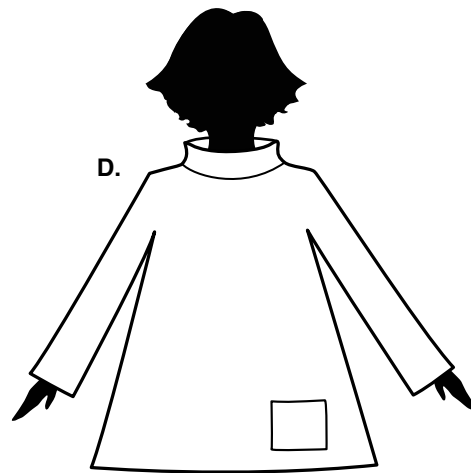
For everyday wear this button-up jacket is trimmer than the Travel Jacket with a more conventional shape and fit. We love the collar style and the band the bottom with two hidden pockets big enough for exactly what you need to carry. Center Back 31"



C.

C. JACKETY JACKET
CD26-JJ.....\$81

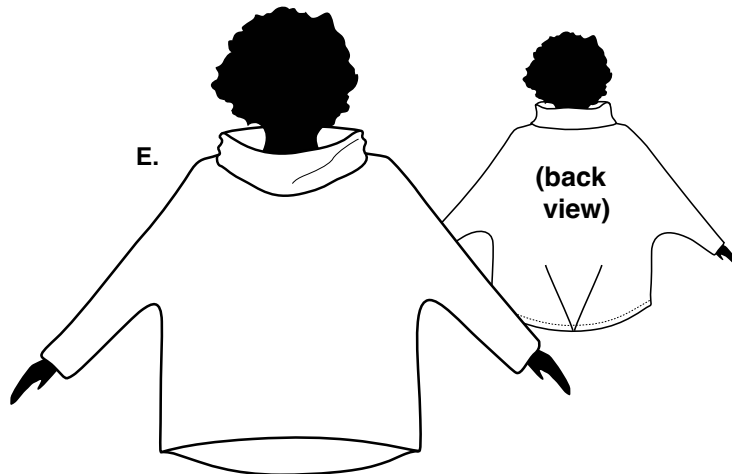
We could easily call THIS one a Blazer, since it'll be the first one you grab when you're heading out for whatever task is on hand. It's straight rather than a-lined, has a great collar and one simple pocket on the left... easy, easy jacket. Center Back 26"



D.

D. POCKET TUNIC
CD26-PT.....\$66

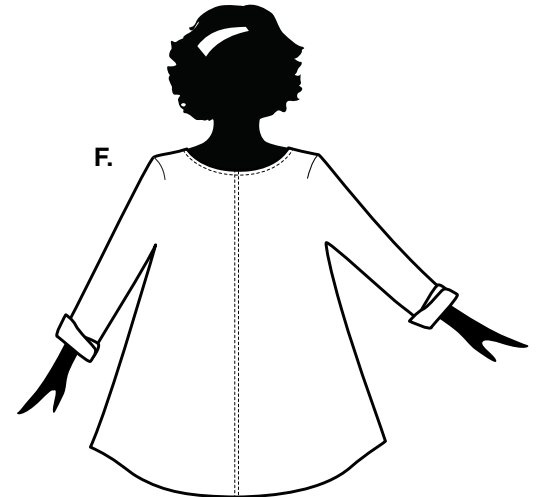
Our pullover tunic has set in sleeves (not dropped like the Boxy Turtle) with a mock turtle neck that's just the right height and width to make everyone happy, a trim and fairly straight body and one pocket way down at the bottom on the left side. Center Back 25"



E. OVERSIZED COVERALL

CD26-CA.....\$79

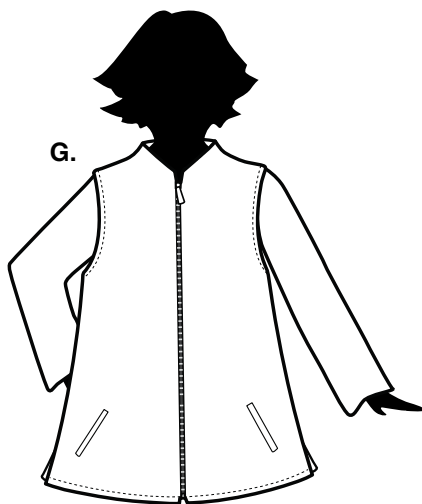
Comes in 3 sizes ONLY!! Huge fun turtleneck that can be folded down, draped or worn up for style. There is no shoulder seam since the body is dolman shaped and the back dips down with a great looking pleat. Perfect with a pair of jeans!! S,M,L, ONLY
Center Back 25"



F. DRESSED UP TEE

CD26-DT.....\$66

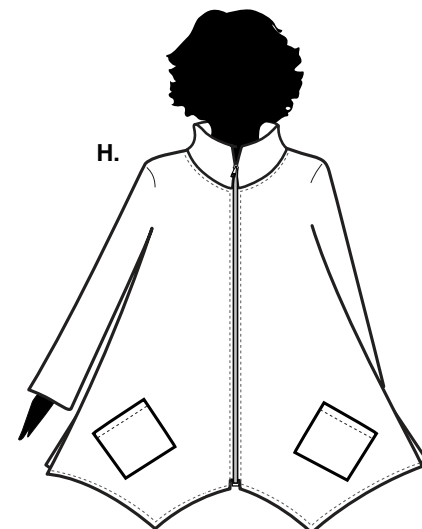
I love this simple top. It has a bateau styled neck line, a gentle a-lined shape to the body with double stitching down the center front (non-functional but fun) and a soft curved hemline. Center Back 27"



G. VEST

CD26-VT.....\$70

This year we've made a tailored vest, a sophisticated vest...a vest you're going to love to wear. There's no collar on this one, two welt pockets and of course a black zipper. Center Back 27"



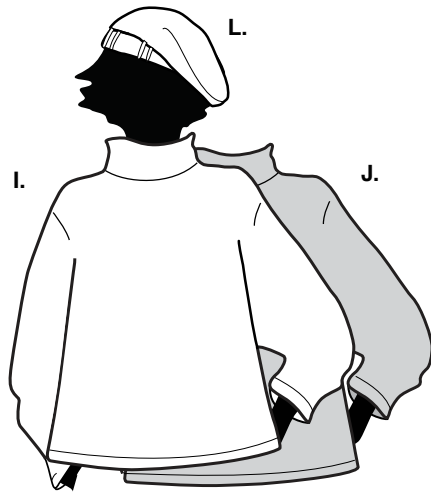
H. SASSY COWL

CD26-SC.....\$78

IT'S THE ONE AND ONLY...
SASSY COWL...

worn by many, loved by all. A lean look in an a-line shaped, big-pocketed, high-necked, zip up! Center Back 29"

p.3



I. BOXY TURTLE
CD26-BX.....\$47
 Our favorite top of all time is a loose, boxy, loose coveled turtle neck.
TWO SIZES ONLY:
 size one (s/m) and size two (m/l).

J. BOXY TURTLE 2" LONGER
CD26-BX2.....\$48
 Same as the regular Boxy Turtle but 2" longer. **(TWO SIZES ONLY:** size one (s/m) and size two (m/l).



K. ZIPPY JACKET
CD26-ZJ.....\$59
 A regular in the Cotton Down line-up each year! It fits just about everyone and looks good to boot! Square cut, dropped shoulders and a front zip closure....
ONE SIZE ONLY!!!
 Center Back 25"

L. FAT HAT
CD26-FH.....\$12
 A loose, roll-up hat, shapeable, drapeable hat for **WHATEVER** shape your head's in.

M. MAD HATTER
CD26-MH.....\$18
 Soft, floppy and a fun combination of Paddington Bear and the Cat in the Hat.

Sunday Morning



2026 fall/winter





THE CARDY
SM26-TC



SOFT COWL TUNIC TOP
SM26-CW



PULLOVER
SM26-PO



BASICALLY A TEE
SM26-BT

SUNDAY MORNING



NEW COMFY CROP
SM26-NCP



STOVEPIPE PANT
SM26-SP



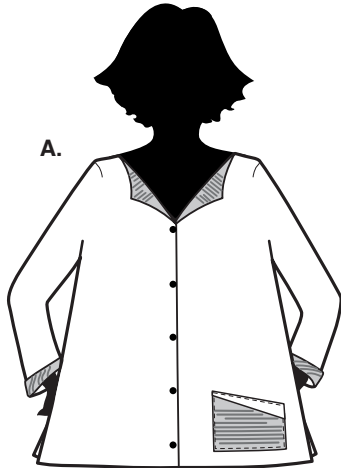
ANYTIME PANT
SM26-AT



SPANTALOOON
SM26-SN

SUNDAY MORNING

SUNDAY MORNING!...it's a feeling, a way to greet the raw colder days, the one thing you want to jump into when you are looking for COZY! Sunday Morning is not having to get up and race off to work. It's a cup of coffee, a good book, the newspaper and the smell of breakfast someone else is cooking, pancakes in the frying pan, bacon on the griddle. AND we can't think of a yummiier way to greet any day, anywhere you happen to be than in this wonderful collection. 66% Bamboo, 28% Cotton 6% spandex soft French Terry! This year it comes in Black/Teal Stripe, Fade Black/Teal Stripe and Black, of course. Garments come "all ways" unless otherwise noted. Machine wash cool, cool dry. XS-1X Available for delivery starting in July.



SWATCHES



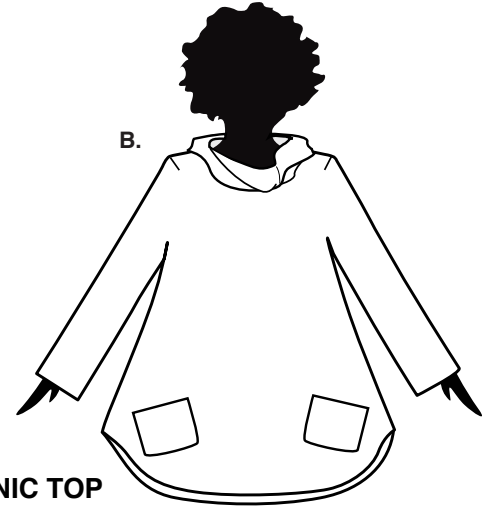
BLACK/TEAL STRIPE



FADE BLACK/TEAL STRIPE



BLACK

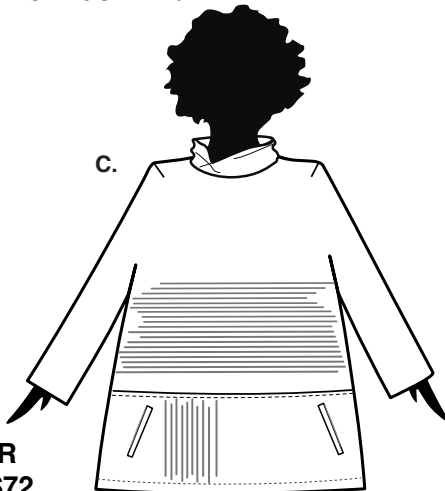


A. THE CARDY
SM26-TC.....\$69

If you've worn the 2 Pocket Tee in any of our fabrics, this fit and look will be familiar BUT this time we've made it into a long sleeved two-pocket-button-up-the-front cardy. Comes only as shown. Center Back 24 1/2"

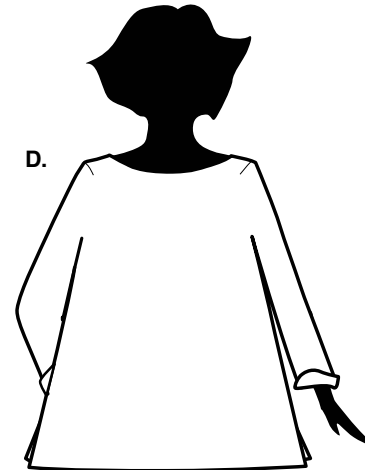
B. SOFT COWL TUNIC TOP
SM26-CW.....\$74

This is my "go to dressed-up-longish top" for whenever I want to upgrade my look of the day. It has a comfy, very over-sized, loose cowl neck, long a-line shaped body ending in an exaggerated shirt tailed hemline. To top it off we've added two perfect pockets. Center Back 28 1/2"



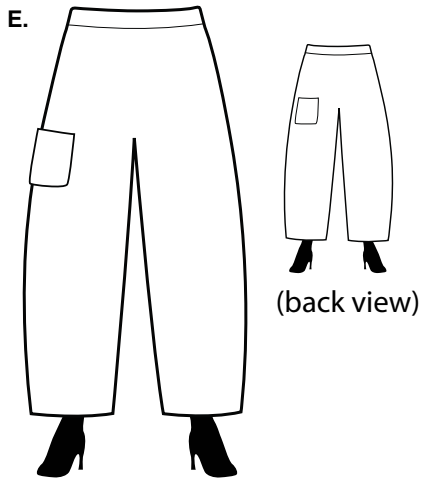
C. PULLOVER
SM26-PO....\$72

It's fancy, fun, flattering and fall wrapped up into one cozy top. The Black body comes with a Black Terry bottom band, The Stripe and Fade body come with a horizontal Stripe and the lower band to match comes vertically. The welt pockets are the perfect place for your hands. Center Back 27 1/2"



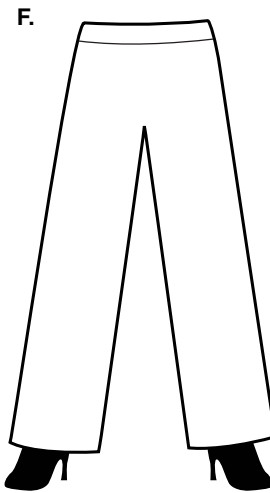
D. BASICALLY A TEE
SM26-BT.....\$63

Some days just call for SIMPLE... and this just might be the SIMPLE that fits your needs... a simple tee with 4" side slits Center Back 24 1/2"



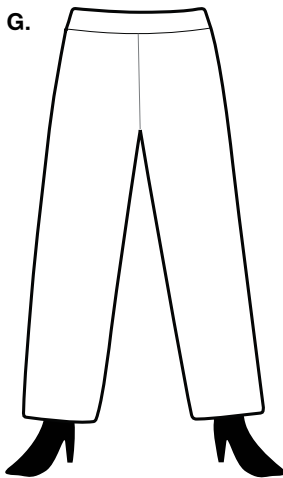
E. NEW COMFY CROP
SM26-NCP.....\$61

A best seller year in and year out. 2" yoga waist, fitted at the high hip and a slightly rounded, arty styled leg. This year we have one pocket on the front right and one more for fun on the back left. Comes Black, Stripe or Fade Stripe. 38" outseam.



F. STOVEPIPE PANT
SM26-SP.....\$59

Try these on for SIGHS...2" soft yoga waistband, narrow at the high hip and slightly, very slightly, flared at the hemline. Perfect pant for lounging around or, believe it or not, DRESSING UP! It works both ways. Black only 40 1/2" outseam.



G. ANYTIME PANT
SM26-AT.....\$59

Same soft 2" yoga waistband as our other pants but it's a narrower, straighter look. Black only 40 1/2" outseam.



H. SPANTALOOON
SM26-SN.....\$62

Warmer for winter than the ones in our Travelknit... our Spantaloon is a 23" long skirt with full length leggings attached. The perfect look when you want to give your jeans a break.

for IMMEDIATE DELIVERY!



Summer Crush



aka Fat Hat Clothing Co.



BOYFRIEND SHIRT
ST26-BF



SIMPLE VEST
ST26-SV



THREE BUTTON SHELL
ST26-TB



SUNSHINE JACKET
ST26-SJ

SUMMER CRUSH



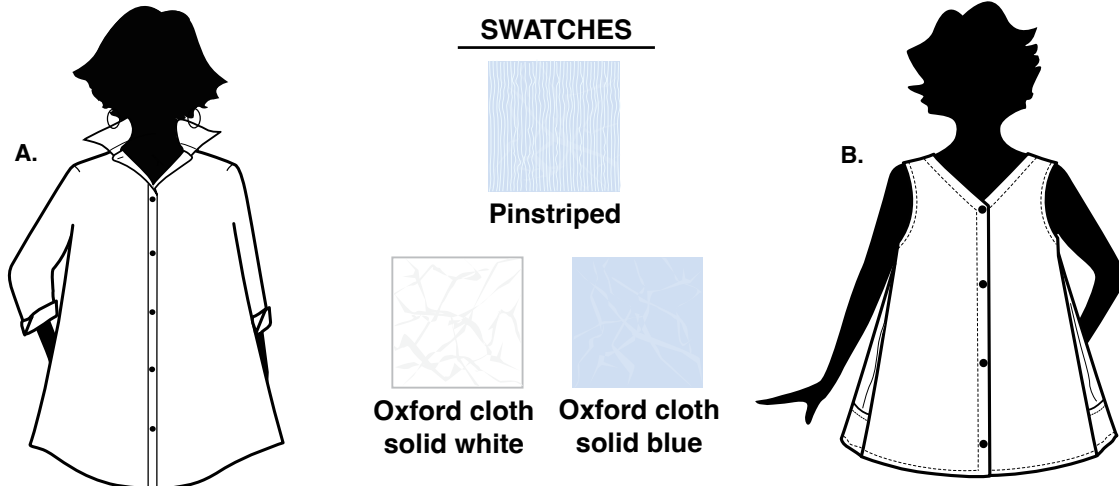
ARTFUL PANT
ST26-AP



FUN FOR ALL PANT
ST26-FF

SUMMER CRUSH

When it's summer and it's hot there's nothing better than feeling AND looking "cool". This is what I've found...It's a crisp crush 59% cotton 41% poly fabric that is already crushed and perfect for the summertime. Available in a tiny Pinstriped (soft sky blue/white), solid White and a matching Oxford Cloth look of the White and Blue threads woven together. The pieces mix and match and look as lovely as a summer breeze. Machine wash and dry. Available for delivery starting in May. XS-1X.



A. BOYFRIEND SHIRT

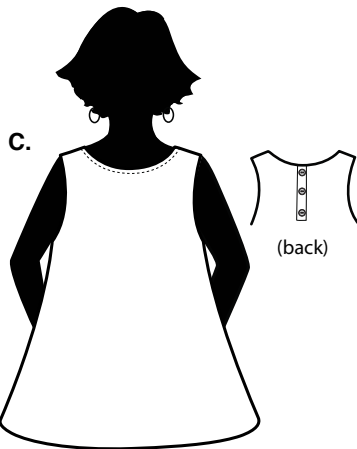
ST26-BF.....\$79

Everyone looks for that perfect, crisp, high-collared, shirt-tailed, roll up sleeved summer Boyfriend Shirt. If you've been searching, search no more. This is the one...not oversized, not too long, sized just right. Center Back 28"

B. SIMPLE VEST

ST26-SV.....\$67

Well, maybe not THAT simple...this vee necked vest has surprising side gussets with pockets for all your stuff. Try it over the Boyfriend Shirt. We think you're going to love it on its own as a summer shirt or as the fun vest that it is. Center Back 26.5"

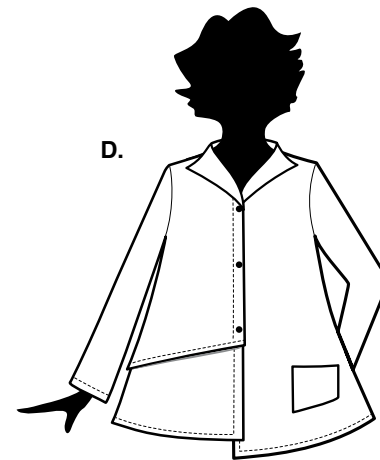


C. THREE BUTTON SHELL

ST26-TB.....\$47

It's a F.H.Clothing Co. favorite and our "go to" sleeveless top that flatters every body that's willing to go sleeveless in the summer.

Center Back 24"



D. SUNSHINE JACKET

ST26-SJ.....\$79

Wear it buttoned as a shirt or unbuttoned as a summer jacket, either way it's going to make you smile. It has a vee neck, lapel style neckline, arty pleats on one side to give it pizzazz and one lonely pocket just for the fun of it.

Center Back 25"

p.2



E. ARTFUL PANT
ST26-AP.....\$76

Perfect for someone like me who loves a “shapely, narrow topped, wide curved leg” look. This pant has an elastic back waist, flat fly/zip front and two glorious in seam side pockets. This time we’ve given these pants a 1” band at the bottom of the legs. 36” outseam.



F. FUN FOR ALL PANT
ST26-FF.....\$73

These fun summer pants have a tiny elastic waistline, cropped stove-pipe styled pant leg and two hip patch pockets. They’re a knockout in the stripe or in the solids. 34” outseam.



F.H. Clothing Co.
1 Quechee Main Street
Quechee, Vermont 05059

(802) 296-6646 . retail@fathat.com
fathat.com