



MIDDLEWICH
HOUSING

FRANK CLIFFE WAY, MIDDLEWICH,
CHESHIRE CW10 9RN

HUNTERS[®]
HERE TO GET *you* THERE

MH
MIDDLEWICH HOUSING

Social Club

Middlewich Cricket Club

Newton Brewery Inn

Starbucks
Travelodge

Morrisons
Lidl

Wheelock Street
Roman Court
McCarthy Stone Development

The White Bear

The Boars Head
The Kinderton

Frank Cliffe Way
Tesco Express

Medical Centre

Home Bargains

Middlewich Primary School

Middlewich High School

Middlewich Leisure Centre

St Mary's Catholic Primary School

Play area

The Kings Lock Inn

Manor Park

Play area

A54

A530

A530

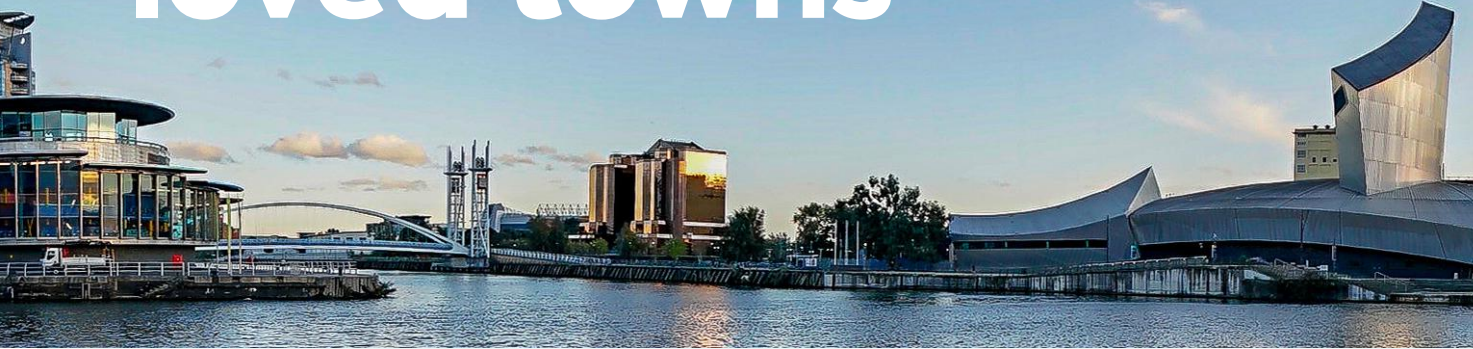
A533

A530

RIVER WHELOCK

RIVER CROCO

One of the UK's best- loved towns



In the crook of the Trent & Mersey and the Wardle Canals, Frank Cliffe Way is ideally located. Find all the town's amenities only a short walk away including local primary and secondary schools, community centre, leisure centre, the popular restaurants and cafes of Wheelock Street and, of course, the canal-side paths.

It's ideally located for easy access onto the local main thoroughfares including the A54, A530 and the Holmes Chapel Road to the M6.

Well connected



DRIVE



M6 motorway	13mins
Sandbach	14mins
Crewe	19mins
Nantwich	29mins
Stockport	35mins
Warrington	30mins
Manchester	40mins



TRAIN



Winsford	8mins
Holmes Chapel	12mins
Crewe	21mins



AIR

Manchester Airport	28mins
--------------------	---------------

Frank Cliffe Way is a new neighbourhood for Middlewich.

Located just off the St Ann's Road the community of 35 homes offers one-bedroom apartments or two and three-bedroom homes, all thoughtfully designed and beautifully crafted. Choose the layout that suits your lifestyle and enjoy a home that is as stylish as it is efficient.

Choose the layout that suits your lifestyle and enjoy a home that is as stylish as it is efficient.

Often described as idyllic with a fantastic sense of community, Middlewich is a town with an incredible sense of place and history. It should come as little surprise that in 2014 the CW10 postcode was voted one of the top five most attractive places to live in the UK.



Move to Middlewich

The homes



Our plan



SITE PLAN

- A Trent
- B Bunn
- C Wardle
- E Hepburn
- F Shropshire
- G Farrington
- H Appleton

The Trent Apartments

4 x 1 Bedroom Apartments - 53.66m² / 577.59 sq ft



GROUND FLOOR

50.59m² / 543.46 sq ft

Kitchen	6.29m ² / 67.67 sq ft
Living room/dining	16.89m ² / 181.81 sq ft
Bedroom	9.56m ² / 102.88 sq ft
Utility	1.6m ² / 17.2 sq ft
Store	2.32m ² / 24.94 sq ft
Bathroom	5m ² / 53.85 sq ft

FIRST FLOOR

53.66m² / 577.59 sq ft

Kitchen	6.3m ² / 67.8 sq ft
Living room/dining	16.58m ² / 178.42 sq ft
Bedroom	11.21m ² / 120.64 sq ft
Utility	1.77m ² / 19 sq ft
Store	2.39m ² / 25.74 sq ft
Bathroom	5.19m ² / 55.91 sq ft



Ground Floor Plan

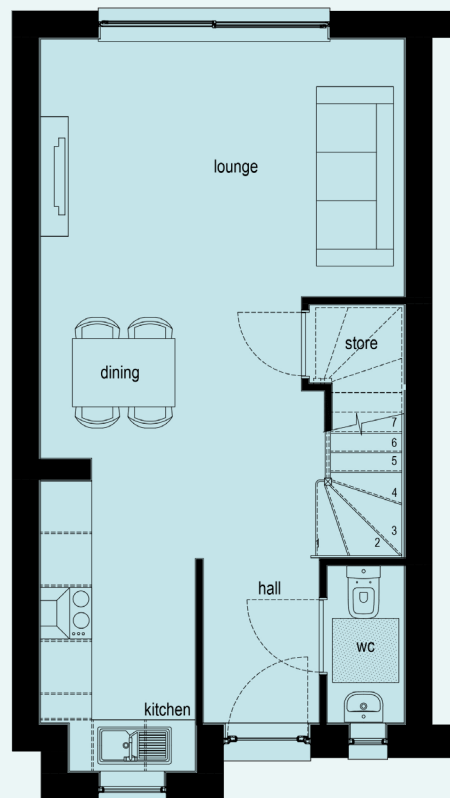


First Floor Plan

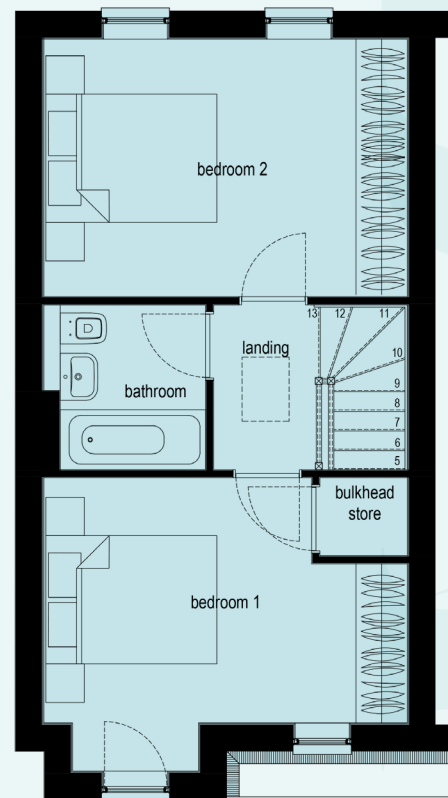
The Bunn

2 Bedroom Homes

6 x Town Houses and 2 x Semi - detached Houses - 70.97m² / 763.91 sq ft



Ground Floor Plan



First Floor Plan

GROUND FLOOR

35.48m² / 381.961 sq ft

Kitchen	5.95m ² / 64 sq ft
Living room/dining	19.22m ² / 206.88 sq ft
WC	1.65m ² / 17.79 sq ft
Store	1.5m ² / 16.2 sq ft

FIRST FLOOR

35.48m² / 381.96 sq ft

Bedroom 1	11.89m ² / 128.08 sq ft
Bedroom 2	12.81m ² / 137.87 sq ft
Bathroom	3.65m ² / 39.29 sq ft
Store	0.93m ² / 10.03 sq ft

The Wardle

2 Bedrooms Home

2 x Town Houses and 2 x Semi-detached Houses - 74.34m² / 800.16 sq ft



GROUND FLOOR

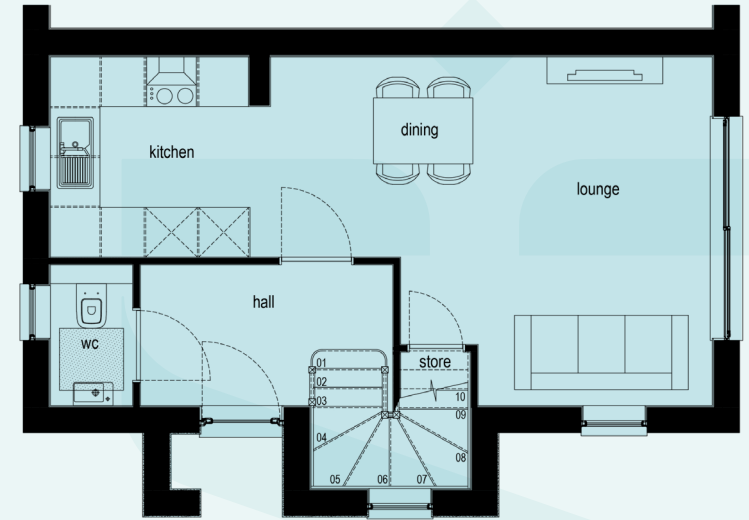
36.32m² / 390.97 sq ft

Kitchen	5.80m ² / 62.43 sq ft
Living room/dining	19.48m ² / 209.68 sq ft
WC	1.69m ² / 18.18 sq ft
Store	1.38m ² / 14.91 sq ft

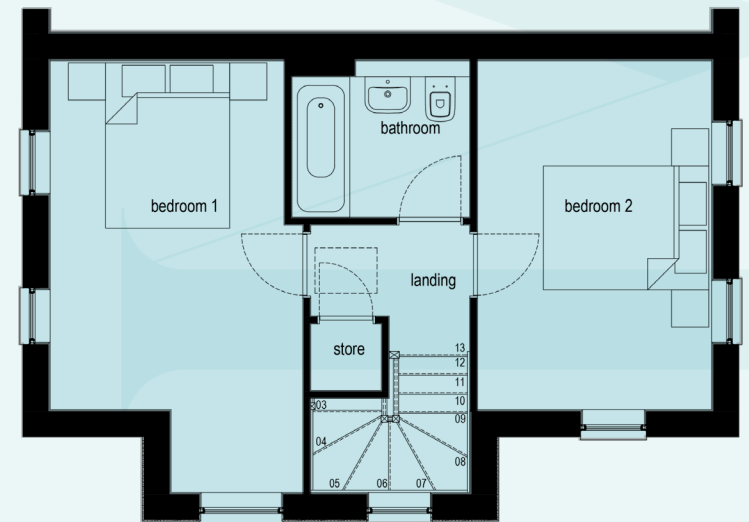
FIRST FLOOR

First Floor - 38.02m² / 409.19 sq ft

Bedroom 1	14.03m ² / 151.04 sq ft
Bedroom 2	11.93m ² / 128.46 sq ft
Bathroom	4.07m ² / 43.80 sq ft
Store	0.69m ² / 7.40 sq ft



Ground Floor Plan



First Floor Plan

The Hepburn

2 x 3 Bedroom Semi-detached Houses - 102.81m² / 1106.64 sq ft



GROUND FLOOR

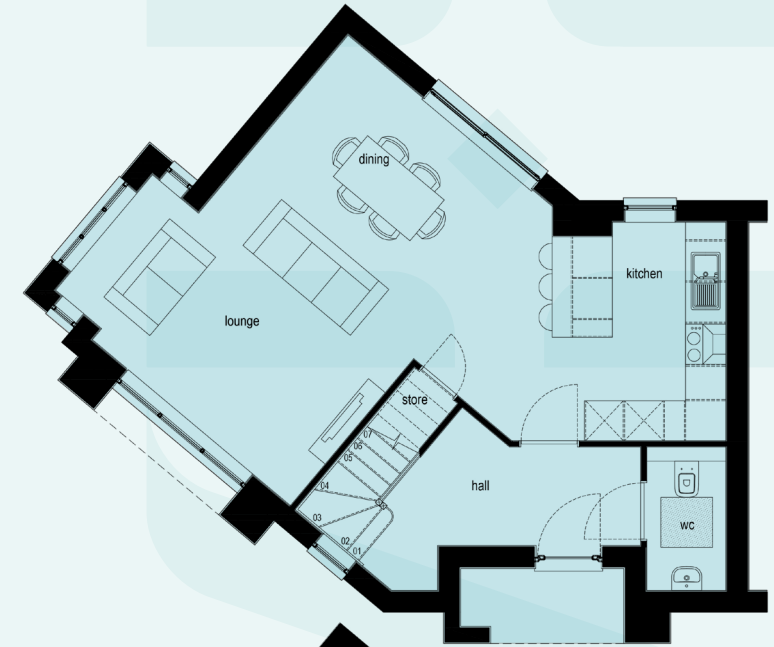
51.41m² / 553.36 sq ft

Kitchen	12.77m ² / 137.44 sq ft
Living room/dining	25.12m ² / 270.42 sq ft
WC	2.54m ² / 27.29 sq ft
Store	0.96m ² / 10.29 sq ft

FIRST FLOOR

First Floor - 51.40m² / 553.28 sq ft

Bedroom 1	13.08m ² / 140.78 sq ft
Bedroom 2	10.85m ² / 116.74 sq ft
Bedroom 3	7.73m ² / 83.15 sq ft
Bathroom	4.9m ² / 53.23 sq ft
Store 1	1.01m ² / 10.89 sq ft
Store 2	0.51m ² / 5.49 sq ft



Ground Floor Plan



First Floor Plan

The Shropshire

2 x 3 bedroom semi-detached Houses - 93.62m² / 1007.77 sq ft



GROUND FLOOR

46.92m² / 505 sq ft

Kitchen	12.52m ² / 134.76 sq ft
Living room/dining	21.55m ² / 231.92 sq ft
WC	2.05m ² / 22.10 sq ft
Store	0.96m ² / 10.29 sq ft

FIRST FLOOR

First Floor - 46m² / 502.76 sq ft

Bedroom 1	10.85m ² / 116.76 sq ft
Bedroom 2	11.43m ² / 123.06 sq ft
Bedroom 3	6.01m ² / 64.70 sq ft
Bathroom	5.01m ² / 53.94 sq ft
Store 1	1.01m ² / 10.89 sq ft
Store 2	0.631m ² / 6.78 sq ft



Ground Floor Plan



First Floor Plan

The Farrington

3 Bedroom Homes

2 x Town Houses and 2 x semi-detached Houses - 96.94m² / 1043.46 sq ft



GROUND FLOOR

39.18m² / 421.73 sq ft

Kitchen	5.91m ² / 63.61 sq ft
Living room/dining	20.99m ² / 225.972 sq ft
WC	1.59m ² / 17.16 sq ft
Cloaks	1.2m ² / 12.91 sq ft
Store	0.66m ² / 7.14 sq ft

FIRST FLOOR

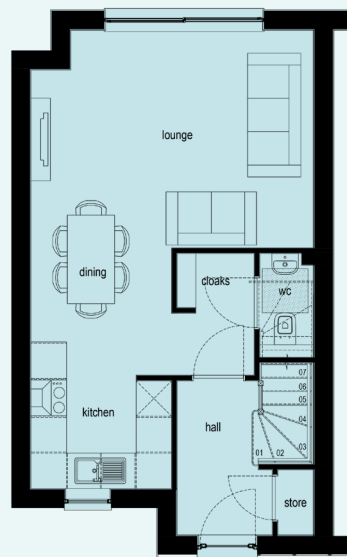
First Floor - 34.52m² / 371.57 sq ft

Bedroom 2	9.59m ² / 103.26 sq ft
Bedroom 3	9.34m ² / 100.58 sq ft
Bathroom	4.75m ² / 51.16 sq ft
Store	0.83m ² / 8.91 sq ft

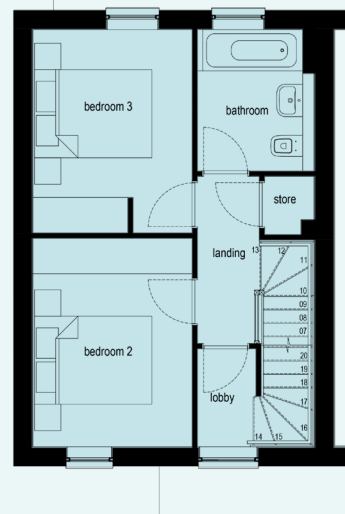
SECOND FLOOR

First Floor - 23.24m² / 250.16 sq ft

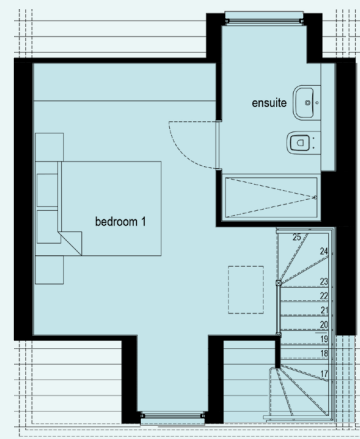
Bedroom 1	15.54m ² / 167.29 sq ft
En-suite	5.31m ² / 57.15 sq ft



Ground Floor Plan



First Floor Plan



Second Floor Plan

The Appleton

3 Bedroom Homes - 4 x Town houses - 6 x Semi detached houses
1 x Detached house - 113.84m² / 1225.57 sq ft



GROUND FLOOR

40.24m² / 433.10 sq ft

Kitchen	9.55m ² / 102.78 sq ft
Living room/dining	19.74m ² / 212.49 sq ft
WC	2.59m ² / 27.89 sq ft
Store	1.3m ² / 14 sq ft

FIRST FLOOR

First Floor - 40.62m² / 437.27 sq ft

Bedroom 2	11.89m ² / 127.99 sq ft
Bedroom 3	12.8m ² / 137.81 sq ft
Bathroom	4.69m ² / 50.53 sq ft

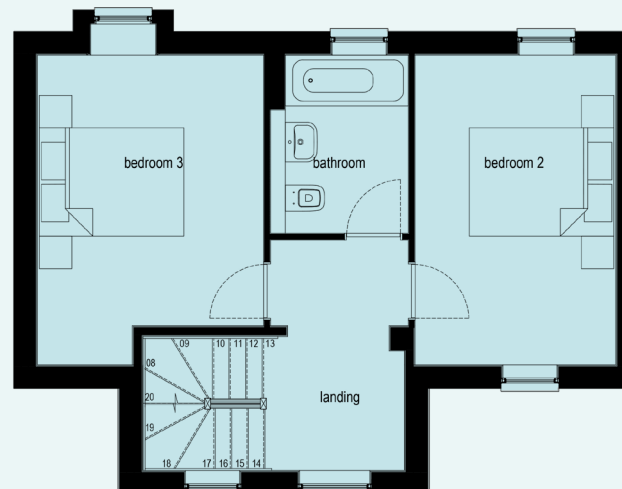
SECOND FLOOR

First Floor - 32.98m² / 355.2 sq ft

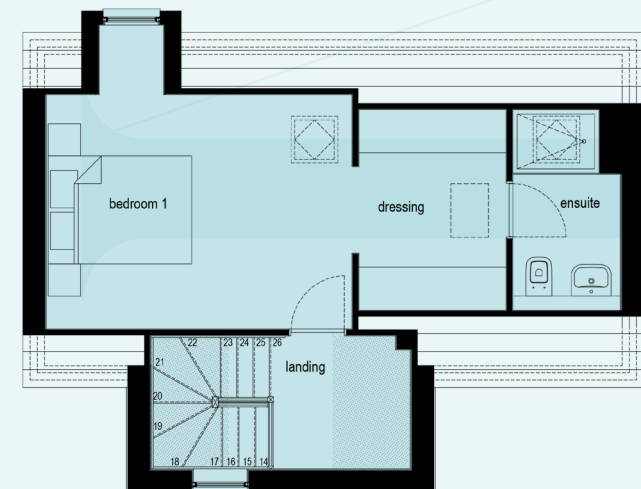
Bedroom 1	14.77m ² / 158.96 sq ft
Dressing	5.73m ² / 61.63 sq ft
En-suite	4.18m ² / 45.03 sq ft



Ground Floor Plan



First Floor Plan



Second Floor Plan

Specification

External

- Turfed front garden
- Concrete flagstones to perimeter
- External security light to front and rear of property
- Wired doorbell
- Garden storage facility
- Black fascias gutters and rainwater goods
- White render to front of several properties

Decoration

- Woodwork gloss white finish
- Internal walls generally white finish
- Five-panel vertical textured doors finished in white gloss
- Door furniture chrome lever rose

General

- White UPVC double glazed windows
- Cottage composite door finished in oak
- Rear doors white UPVC sliding patio doors
- Gas central heating Worcester Bosch combi boiler
- 10-year home warranty
- Thermostatically controlled radiators throughout
- Magres ceramic tiles Tool Range in light grey
- EV charging points to majority of properties

Electrical

- TV aerial point to living room and master bedroom
- BT sockets
- Downlighters

Safety

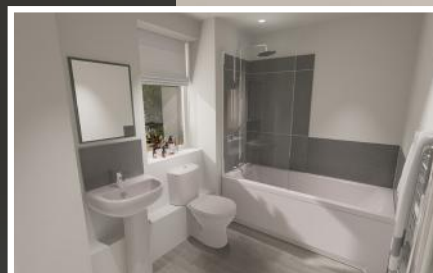
- Mains powered smoke detectors
- Window locks to all windows
- Multi point locking points to all external doors
- Secure fencing to rear of property

Bathrooms & Ensuites

- White contemporary Armitage Shanks sanitaryware
- Magres light grey ceramic tiles
- Tiling to splashback above wash-hand basin and around bath and shower enclosures
- Triton electric shower or Bristan mixer shower
- Glazed shower screen or glazed bath screen to bathrooms and ensuites
- Chrome towel warmer

Kitchens

- Movimar high gloss white colour units
- Black Montpellier appliances, including oven, 4-ring hob and extractor
- Black 1.5 sink with black mixer tap
- Plumbing for washing machine
- Cutlery tray
- Worktops and upstand finished in grey colour
- Downlighters
- LVT flooring to kitchen area





Designed and beautifully crafted...

Built to fit your life style...

WJM
WJM DEVELOPMENT

171
MIDDLEWICH
HOUSING



Enjoy a home that is as stylish
as it is efficient...

WJM
WJM DEVELOPMENT

171
MIDDLEWICH
HOUSING





The developer

BCEGI is thrilled to lead the construction efforts for the Middlewich Housing Project, a testament to our commitment to excellence in the UK housing market. As the main contractor, BCEGI is dedicated to bringing this vision to life, ensuring that each of the 35 homes is a masterpiece of design and functionality.

Middlewich Housing isn't just about construction; it's about creating a community and a lifestyle that resonates with modern living. Join us in the excitement of this groundbreaking project, where innovation meets functionality, and each home is a canvas of comfort and style.





Hunters Worsley

Suite 4, The Granary, 50 Barton Road,
Worsley, Manchester, M28 2EB

0161 790 9000

middlewich@hunters.com | [hunters.com](https://www.hunters.com)

Sales | Lettings | Mangement