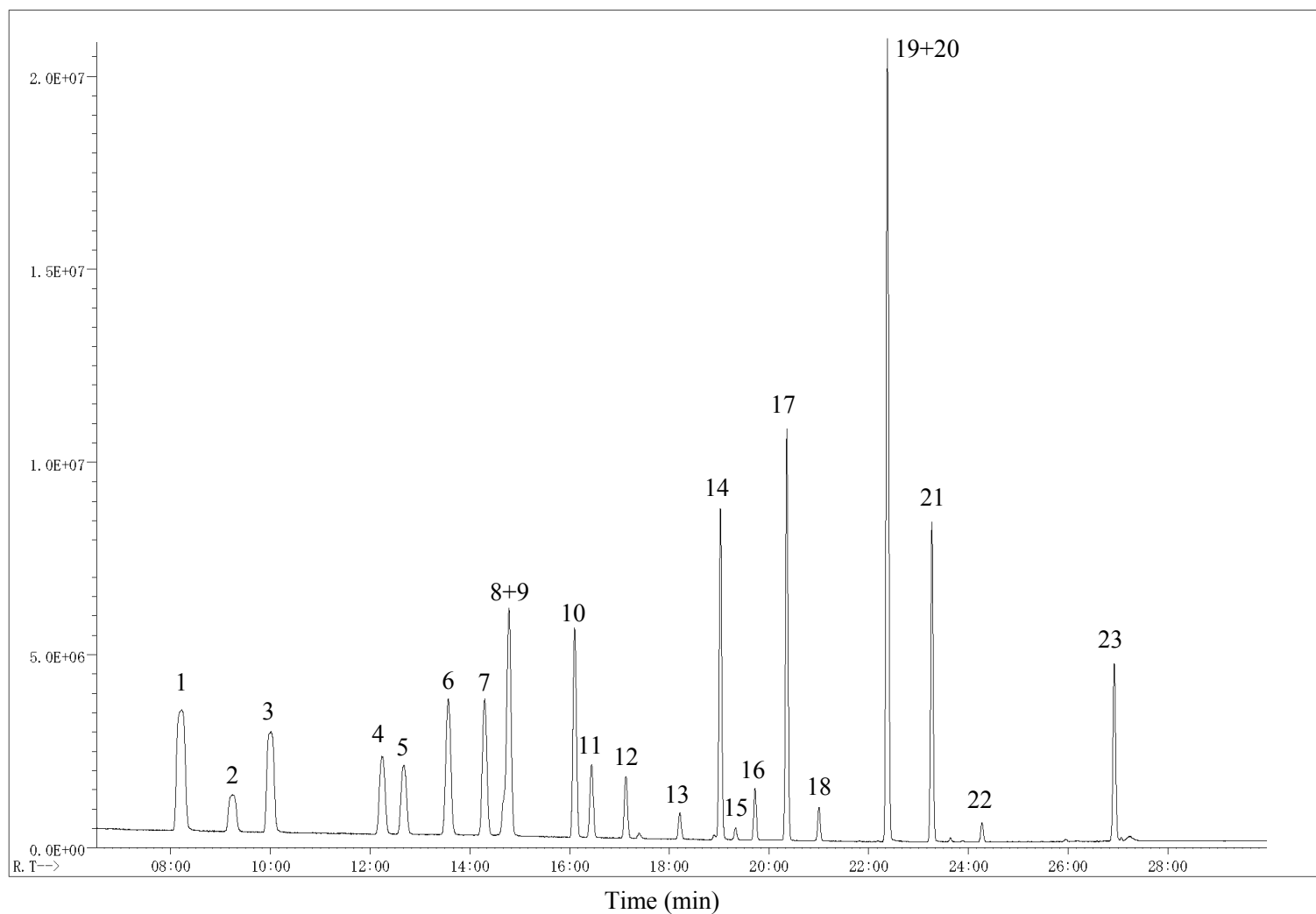


# InertSearch™ for GC

InertCap® Applications

## Volatile organic compounds

Data No. GA239-0591



# InertSearch™ for GC

InertCap® Applications

## Volatile organic compounds

Data No. GA239-0591

### Conditions

<b>System</b>	: HS-GC-MS
<b>Column</b>	: InertCap AQUATIC 0.25 mm I.D. x 60 m df = 1.0 µm
<b>Col. Cat. No.</b>	: 1010-29165
<b>Col. Temp.</b>	: 40 °C (5 min hold) - 5 °C/min - 80 °C - 10 °C/min - 200 °C (5 min hold)
<b>Carrier Gas</b>	: He 120 kPa
<b>Injection</b>	: Split flow 3 mL/min 160°C
<b>Detection</b>	: MS Scan ( $m/z = 45 - 250$ ) Interface Temp. 200 °C
<b>Sample Size</b>	: Headspace Gas 1 mL Sample heating Temp. 60 °C Sample heating time 15 min 10 ng/mL in Water 10 mL in Vial (22 mL)

### Analyte

- |                                       |                                       |
|---------------------------------------|---------------------------------------|
| 1. 1,1-Dichloroethylene               | 13. <i>cis</i> -1,3-dichloropropene   |
| 2. Dichloromethane                    | 14. Toluene                           |
| 3. <i>trans</i> -1,2-dichloroethylene | 15. <i>trans</i> -1,3-dichloropropene |
| 4. <i>cis</i> -1,2-dichloroethylene   | 16. 1,1,2-Trichloroethane             |
| 5. Chloroform                         | 17. Tetrachloroethylene               |
| 6. 1,1,1-Trichloroethane              | 18. Dibromochloromethane              |
| 7. Carbon tetrachloride               | 19. <i>m</i> -Xylene                  |
| 8. 1,2-Dichloroethane                 | 20. <i>p</i> -Xylene                  |
| 9. Benzene                            | 21. <i>o</i> -Xylene                  |
| 10. Trichloroethylene                 | 22. Bromoform                         |
| 11. 1,2-Dichloropropane               | 23. 1,4-Dichlorobenzene               |
| 12. Bromodichloromethane              |                                       |