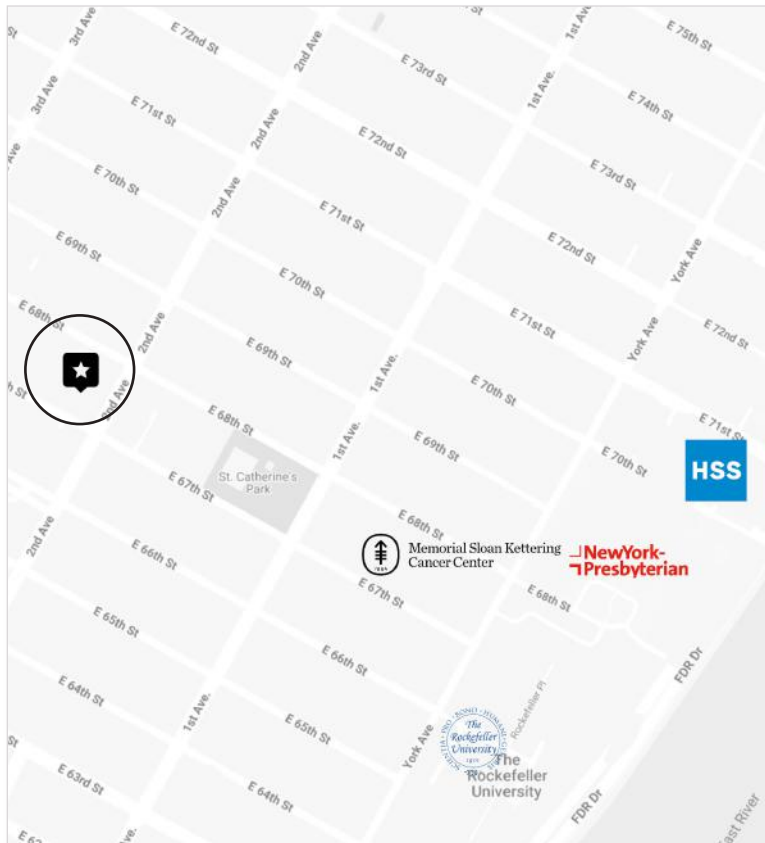


SECOND FLOOR  
**MEDICAL OFFICE**  
FOR LEASE

PRICE	\$9,250
APPROX SIZE	1,480+/- RSF
TERM	NEGOTIABLE
POSSESSION	IMMEDIATE



**235 EAST 67TH STREET, SUITE 201**  
CORNER OF EAST 67TH STREET AND 2ND AVENUE



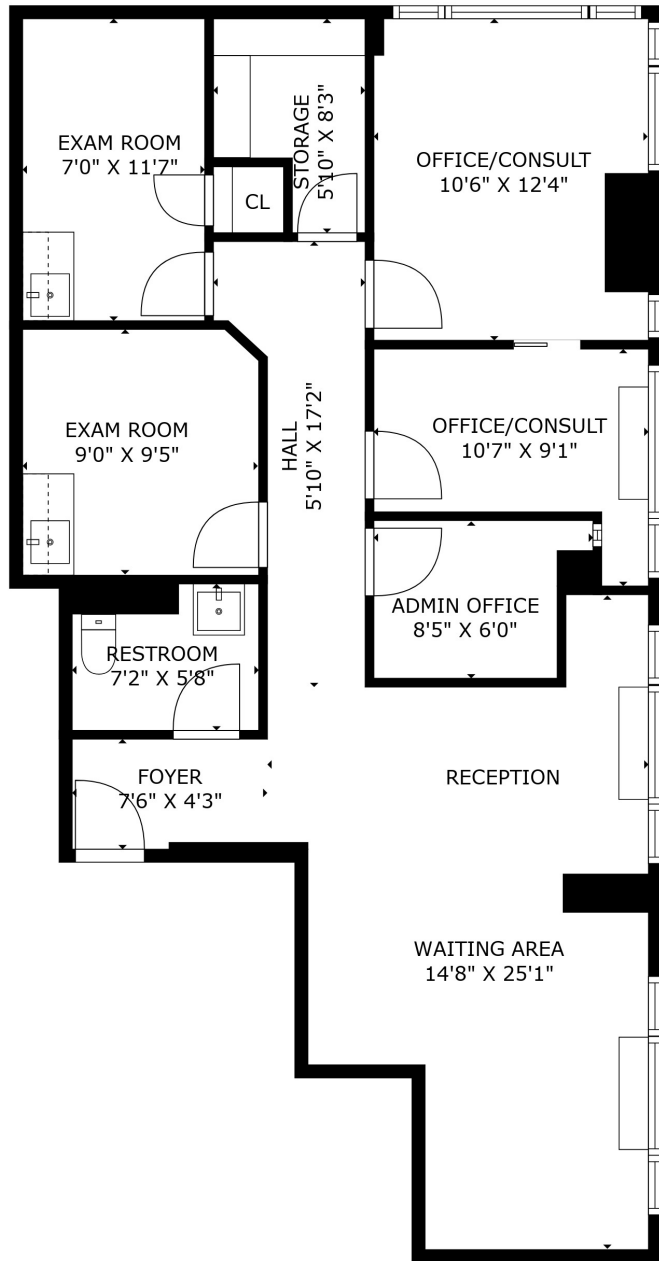
## LAYOUT

- WAITING AREA
- RECEPTION
- TWO EXAM ROOMS
- TWO OFFICES/CONSULTS
- STORAGE ROOM
- RESTROOM

## ADDITIONAL FEATURES

- PRISTINE INSTALLATION
- HERRINGBONE FLOORING
- NATURAL AND OVERHEAD LIGHTING
- CENTRAL AIR CONDITIONING
- ADAPTABLE TO ANY MEDICAL SPECIALTY





FLOOR PLAN FOR ILLUSTRATIVE PURPOSES ONLY



### Paul L Wexler

LICENSED ASSOCIATE  
REAL ESTATE BROKER

P: 212.836.1075  
E: PWexler@corcoran.com

### Josef Yadgarov

LICENSED ASSOCIATE  
REAL ESTATE BROKER

P: 212.836.1097  
E: josef.yadgarov@corcoran.com

### Alisia Ramlochan

LICENSED ASSOCIATE  
REAL ESTATE BROKER

P: 212.893.1450  
E: alisia.ramlochan@corcoran.com

### Kurt Herold

LICENSED ASSOCIATE  
REAL ESTATE BROKER

P: 212.323.3817  
E: kherold@corcoran.com

### Cosmin Bitu

LICENSED REAL ESTATE  
SALESPERSON

P: 917.602.5754  
E: cosmin.bitu@corcoran.com