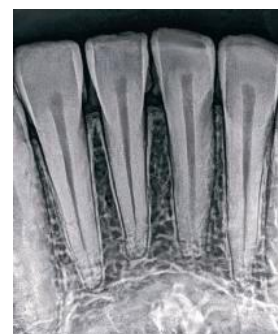
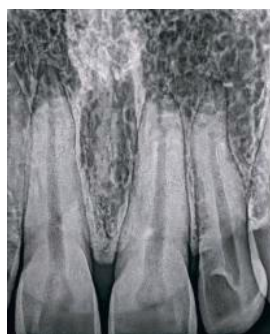




INTRAORAL SENSOR

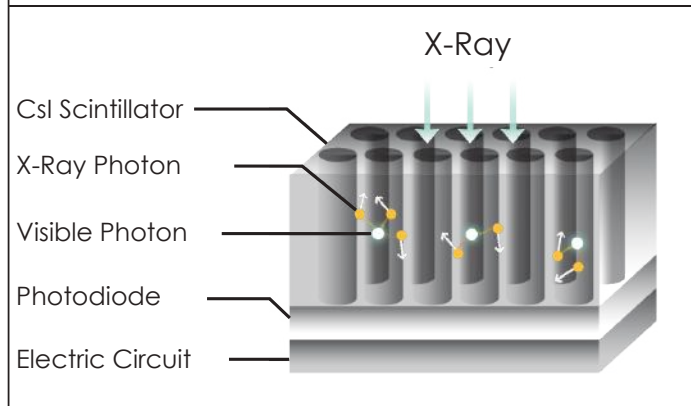
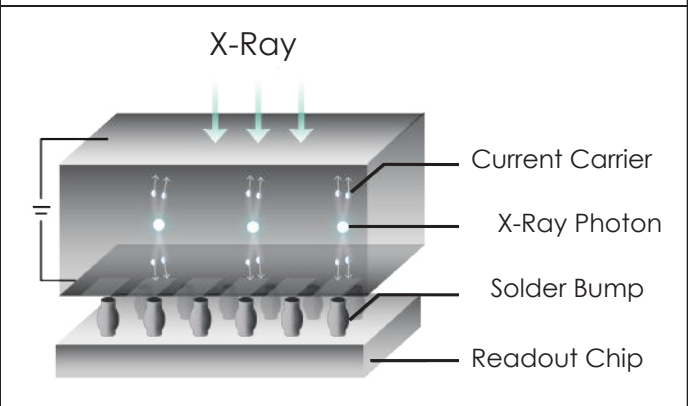


The World's First Photon-Counting Intraoral Sensor

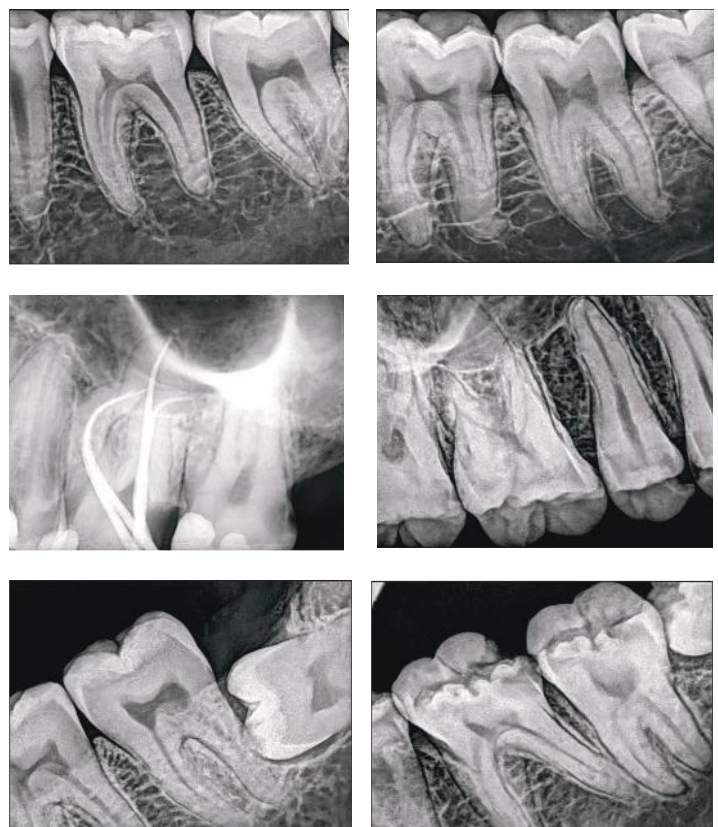
Xpectvision is the world's first to apply the latest photon-counting technology to dentistry, enabling direct imaging, avoiding the interference of light scattering from conventional indirect imaging & ensuring image acquisition stability.

Cutting Edge Technology and Strict Tests Deliver Unrivalled Durability

The Xpectvision intraoral sensor uses silicon-based chips instead of the traditional material, cesium iodide (CsI), avoiding image blurring or performance deterioration.

Competitor	Xpectvision
 <p>CsI Scintillator</p> <p>X-Ray Photon</p> <p>Visible Photon</p> <p>Photodiode</p> <p>Electric Circuit</p>	 <p>X-Ray</p> <p>Current Carrier</p> <p>X-Ray Photon</p> <p>Solder Bump</p> <p>Readout Chip</p>
Cesium Iodide (CsI) Indirect Imaging	Silicon-based chip Direct imaging

Technical Specifications	
Technology Used	Photon Counting Detection (PCD)
Waterproof	Yes
RVG Size	1.5
Effective Imaging Area	25mm x 30mm
Image Resolution	14lp/mm
Pixel Size	-
Sensor Ready for image capture	Manually
License Required	Yes
Cable Quality	Reinforced
Cable Length	3 meters*
Gray Scale	>=16 bit



Direct Imaging Enables Clearer Images and High Reliability

High-Strength, Durable Cable



Water Resistance Tested to IEC IP68



The Xpectvision intraoral sensor uses silica-based chips instead of the traditional material, cesium iodide, avoiding image blurring or performance deterioration.

500,000+ exposures and 100,000+ cable bending tests ensure performance under different working conditions. A shock-resistant and waterproof casing securely protects the sensor.

Ergonomic Design to Maximize Patient Comfort One of the Thinnest X-Ray Sensors on the Market

To better improve the diagnosis experience of patients, the Xpectvision sensor has a more compact design while guaranteeing an adequate sensor area.

Sensor positioners help with quick positioning, significantly reducing patients' discomfort and improving diagnostic efficiency.



RVG 5200

The RVG 5200 is the perfect choice for those looking to take a first step into digital dental radiography. An ideal solution for intraoral imaging needs, the easy-to-use sensor allows users to capture exceptional images quickly and easily. The image quality of the RVG 5200 sensor is the same or higher than other intraoral sensors in its class - so there is no need to sacrifice image quality for affordability.

Easy to install, so you can use it immediately The RVG 5200's user-optimized quick install & user guides help through the installations process, while the post-installation tool verifies the system is working properly to eliminate downtime.

Technology you can count on

The RVG 5200 sensor is backed by Carestream Dental's decades of experience in digital radiography systems and engineering. To protect your investment, all of the connection points along the sensor cable have been reinforced for added durability, ensuring the sensor can withstand hard pulls and torsions.



Waterproof & fully submersible for optional infection control

PROVEN RVG TECHNOLOGY ESTABLISHED RELIABILITY



High Image Quality



Convenient quickstart



Maximum durability



CE / EC US FDA / ISO 13485:2016

Technical Specifications

Technology	CMOS
True Image Resolution	16 lp/mm
Connection	USB 2.0 - High Speed
Size 1	All Purpose sensor providing the best compromise between ease of use and active area
Outside Dimensions	27.6 x 37.7 mm
Dimensions of Active Area	22.2 x 29.6 mm
Sensor Plate Thickness	7.3 mm






WHERE **TRUST** COMES **FIRST**



**Warranty Ke Saath Bhi
Warranty Ke Baad Bhi**

For any Sales & Support

 9821184441, 9599281852, 8448398852

 sales@unicornndenmart.com



SCAN TO VISIT OUR WEBSITE



Corporate Office: 3 Local Shopping Centre, MOR Land, Near J Block DDA Market,
New Rajender Nagar, New Delhi – 110060

    /unicornndenmart.com

* Accessories shown may not be a part of standard equipment. Specifications are subject to change without notice.

Ver 12/2024