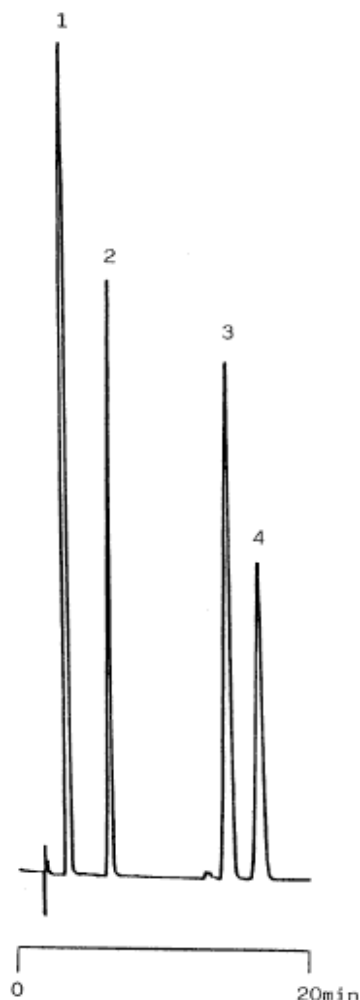


InertSearch™ for LC

Inertsil® Applications

Sulphur drugs

Data No. LA144-0000



Column : Inertsil ODS-2
5 μ m
150 \times 4.6mm I.D.

Column Cat. No. : 5020-01101

Eluent : CH₃OH/5mM IPCC-07=28/72
IPCC-07:Sodium 1-Heptanesulfonate

Flow rate : 1.2 mL/min.

Col. Temp. : RT

Detection : UV 254 nm

Injection Vol. :

Sample :

Solutes : 1. Sulfathiazole
2. Sulfamethizole
3. Sulfadimethoxine
4. Sulfaquinoxaline