

**BRIGGS**  
safetywear

EST 1944



# Reebok



**AUTUMN/WINTER 2024**

[www.briggssafetywear.com](http://www.briggssafetywear.com)

## CONTENTS

- 4 All Terrain Freedom
- 6 FE4 Adventure Safety
- 11 BB4500 Safety
- 14 Excel Light Safety
- 19 Fusion Flexweave Safety
- 21 Fusion Formidable Work
- 24 Royal Glide/Speed TR Safety
- 26 Speed TR Safety
- 28 Trailgrip Safety
- 31 Reebok sole



## MEMORYTECH MASSAGE

MemoryTech Massage footbeds form to the unique contours of your feet for immediate comfort and lasting cushioning.

Profiled pods sooth tight muscles with every step for a treat your feet will thank you for.

MemoryTech footbeds are removable and machines washable for durability and longevity.

## XTR® BRAND COMPOSITE TOE CAP

The XTR® Brand composite toe cap provides extra toe room and comfort; is lightweight, strong as steel and will not conduct heat, cold or electricity. The XTR® Brand composite toe cap meets or exceeds the ASTM F2413 standard for protective footwear.

## FUSION FLEXWEAVE WORK



**FLOATRIDE ENERGY**  
 FLOATRIDE ENERGY MESH IS FLEXIBLE, RESILIENT, AND PROVIDES PREMIUM RESPONIVE CUSHIONING

STRAP AND FLEXWEAVE UPPER FOR  
 LIGHTWEIGHT, STURDY SUPPORT WITH  
 BREATHABILITY AND STRENGTH

COMPOSITE TOE MEETS EXCEEDS  
 ASTM F2413 SAFETY STANDARDS

FLOATRIDE ENERGY MESH IS LIGHTER THAN TRADITIONAL EVA

SLIP AND GRABBER OUTSOLE WITH  
 FLOORING FOR ADAPTIVE FLEXIBILITY

## FLOATRIDE ENERGY

FEATURING

- FEEL FAST**
  - Springy with bounce
  - Lighter than EVA
- FEEL FRESH**
  - Lightweight, flexible, and resilient
- FEEL FUELED**
  - Energy return with every step
  - Low compression set

SLIP RESISTING

# ALL TERRAIN FREEDOM SAFETY



# Reebok

# All Terrain Freedom

## Trail Running Work Shoe



**Style** R4094  
**Gender** Men's  
**Toe** Alloy  
**Upper** Mesh and Ripstop Fabric  
**Color** Grey Lava  
**Size** 6 - 13



**Slip** SRC  
**Oil** Better  
**Metal Chips** Good  
**Heat** Good  
**Abrasion** Better  
**Chemicals** Better

- Lining** Seamless Neoprene with Bootie Design
- Insole** MemoryTech Memory Foam Cushion Removable Footbed
- Outsole** Slip Resistant Rubber Outsole with Trail Lugs and Flex Grooves
- Special Features** No Exposed Metal on Upper

### Product Description

Designed to take on any terrain the work day throws at you. Slip on the All Terrain Freedom and conquer concrete, mud, rocks, and anything in between. A lugged rubber outsole and gripping grooves provide traction, step after step, mile after mile. The full-foot bootie construction keeps mud and moisture out, and keeps comfort in.

### Bullet Points

- Bootie design upper with ripstop fabric for a seamless, close fit and durability
- Low-cut design offers freedom of motion at the ankle
- Neoprene lining for a glove-like fit
- Full height midsole with a soft, lightweight foam provides cushioning and comfort
- Rubber outsole with strategically placed aggressive lugs provide traction and slip resistance
- Flex grooves offer enhanced grip for tight or slippery turns

### Product Features

EN ISO 20345, S1P, SRC, Alloy Toe, Antistatic

# Reebok



**NEW**



**AVAILABLE  
FROM  
SEPT 24**

# FE4 ADVENTURE SAFETY

# FE4 Adventure Safety

## Athletic Safety Shoe



AVAILABLE  
FROM  
SEPT 24

**Style** R3610  
**Gender** Men's  
**Toe** Composite  
**Upper** Microfiber, Mesh, and TPU  
**Color** Black and Orange  
**Size** 3 - 13



**Slip** SRC  
**Oil** Better  
**Metal Chips** Better  
**Heat** Better  
**Abrasion** Better  
**Chemicals** Better

**Lining** Microfiber Lining  
**Insole** Molded Polyurethane Foam  
**Outsole** Floatride Energy Midsole with Lugged Slip Resistant Rubber Skin and Toe Bumper  
**Special Features** 100% Non-Metallic, Extra Wide Toe, Floatride Energy

### Product Description

Give your feet what they deserve with out of the box comfort, working with confidence and fuel that Floatride Energy provides all day.

### Product Features

EN ISO 20345, S3S, Composite Toe, XTR® Extra Wide, Composite Toe, Anti-Static, Electrostatic Dissipative, Puncture Resistant Midsole - PS, Slip Resistant

### Bullet Points

- Floatride Energy Foam midsole keeps you feeling fresh, fast, and fueled
- Durable and grippy rubber outsole keeps you on your feet when you are on the move, meeting EN ISO 20345 coefficient of friction standards for slip resistance on ceramic tile floor with NaLS and on steel floor with glycerine
  - Cushioned forefoot for extra comfort
  - Beveled heel lessens impact and allows you to land smoothly
  - Durable toe bumper adds durability and strength while XTR Brand Extra-Wide Composite Toe Cap meets or exceeds EN ISO 20345 standard for protective footwear
  - S3S - Antistatic with whole shoe water resistance and outsole penetration resistance



# FE4 Adventure Safety

## Athletic Safety Shoe



**AVAILABLE  
FROM  
SEPT 24**

**Style** R3611  
**Gender** Men's  
**Toe** Composite  
**Upper** Microfiber, Mesh, and TPU  
**Color** Blue and Yellow  
**Size** 3 - 13



**Slip** SRC  
**Oil** Better  
**Metal Chips** Better  
**Heat** Better  
**Abrasion** Better  
**Chemicals** Better

**Lining** Microfiber Lining

**Insole** Molded Polyurethane Foam

**Outsole** Floatride Energy Midsole with Lugged Slip Resistant Rubber Skin and Toe Bumper

**Special Features** 100% Non-Metallic, Extra Wide Toe, Floatride Energy

### Product Description

Give your feet what they deserve with out of the box comfort, working with confidence and fuel that Floatride Energy provides all day.

### Product Features

EN ISO 20345, S1PS, Composite Toe, XTR® Extra Wide, Composite Toe, Anti-Static, Electrostatic Dissipative, Puncture Resistant Midsole - PS, Slip Resistant

### Bullet Points

- Floatride Energy Foam midsole keeps you feeling fresh, fast, and fueled
- Durable and grippy rubber outsole keeps you on your feet when you are on the move, meeting EN ISO 20345 coefficient of friction standards for slip resistance on ceramic tile floor with NaLS and on steel floor with glycerine
- Cushioned forefoot for extra comfort
- Beveled heel lessens impact and allows you to land smoothly
- Durable toe bumper adds durability and strength while XTR Brand Extra-Wide Composite Toe Cap meets or exceeds EN ISO 20345 standard for protective footwear
- S1PS - Antistatic with outsole penetration resistance

# FE4 Adventure Safety



**AVAILABLE  
FROM  
SEPT 24**

## Athletic Work Shoe with BOA

- Style** R3613
- Gender** Men's
- Toe** Composite
- Upper** Microfiber, Mesh, and TPU
- Color** Black and Grey
- Size** 3 - 13



- Slip** SRC
- Oil** Better
- Metal Chips** Better
- Heat** Better
- Abrasion** Better
- Chemicals** Better

**Lining** Microfiber Lining

**Insole** Molded Polyurethane Foam

**Outsole** Floatride Energy Midsole with Lugged Slip Resistant Rubber Skin and Toe Bumper

**Special Features** 100% Non-Metallic, Extra Wide Toe, Floatride Energy, BOA® Fit System

### Product Description

Give your feet what they deserve with out of the box comfort, working with confidence and fuel that Floatride Energy provides all day.

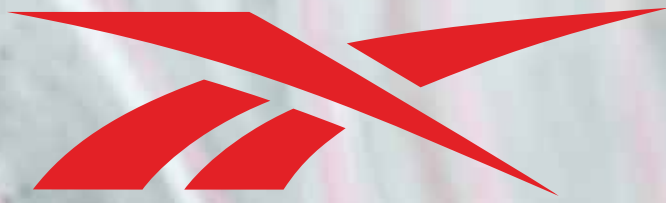
### Product Features

EN ISO 20345, S1PS, Composite Toe, XTR® Extra Wide, Composite Toe, Anti-Static, Electrostatic Dissipative, Puncture Resistant Midsole - PS, Slip Resistant

### Bullet Points

- The BOA® Fit System delivers micro-adjustable, precision fit engineered to perform in the toughest conditions
  - Meets EN ISO 61340 standards for ESD footwear, protecting sensitive equipment from static electric discharge's potential damage
  - Durable and grippy rubber outsole keeps you on your feet when you are on the move, meeting EN ISO 20345 coefficient of friction standards for slip resistance on ceramic tile floor with NaLS and on steel floor with glycerine
- Cushioned forefoot for extra comfort
- Beveled heel lessens impact and allows you to land smoothly
- Durable toe bumper adds durability and strength

# Reebok



**BB4500**

# BB4500 Work

## Low Cut Work Sneaker - S3 SRC



**Style** R4162

**Gender** Men's

**Toe** Composite

**Upper** Full Grain Water-Resistant Leather

**Color** Black and White

**Size** 3 - 13

**Slip** SRC

**Oil** Better

**Metal Chips** Better

**Heat** Good

**Abrasion** Better

**Chemicals** Better

**Lining** Moisture Wicking Nylon Mesh

**Insole** MemoryTech Memory Foam Removable Cushion Footbed

**Outsole** Slip Resistant Rubber Outsole

**Special Features** No Exposed Metal on Upper, Non-Metallic Puncture Resistant Midsole Plate, Extra Wide Toe, Dual Resistor Static Dissipative

### Product Description

Inspire your work and gain some work cred with your co-workers with these heritage basketball-inspired styles from Reebok's timeless sneaker designs. Show some respect for your work while showcasing these timeless styles. These designs will keep you protected while bringing an everyday style and class to your job.

### Product Features

EN ISO 20345, S3, Puncture Resistant Midsole, Composite Toe, XTR® Brand Composite Toe, Slip Resistant (SRC), Water Resistant

### Bullet Points

- Low cut classic basketball-inspired designs offer optimal support and stability
- Water resistant (S3) rated leather upper
- Durable slip resistant rubber outsole keeps sneakers tough against any work environment
- MemoryTech Memory Foam Cushion Footbed adds extra shock absorption and cushion
- XTR® brand composite toe reduces weight while maintaining impact protection (meets or exceeds EN20345)
- 360 degree sidewall stitch for long-lasting durability

# BB4500 Safety

## High Top Safety Sneaker



<b>Style</b>	R4132
<b>Gender</b>	Men's
<b>Toe</b>	Composite
<b>Upper</b>	Full Grain Water-Resistant Leather
<b>Color</b>	Black and Red
<b>Size</b>	3 - 13

<b>Slip</b>	SRC
<b>Oil</b>	Better
<b>Metal Chips</b>	Better
<b>Heat</b>	Good
<b>Abrasion</b>	Better
<b>Chemicals</b>	Better

<b>Lining</b>	Moisture Wicking Nylon Mesh
<b>Insole</b>	MemoryTech Memory Foam Removable Cushion Footbed
<b>Outsole</b>	Slip Resistant Rubber Outsole
<b>Special Features</b>	No Exposed Metal on Upper, Non-Metallic Puncture Resistant Midsole Plate, Extra Wide Toe, Dual Resistor Static Dissipative

### Product Description

Inspire your work and gain some work cred with your co-workers with these heritage basketball-inspired styles from Reebok's timeless sneaker designs. Show some respect for your work while showcasing these timeless styles. These designs will keep you protected while bringing an everyday style and class to your job.

### Product Features

EN ISO 20345, S3, Puncture Resistant Midsole, Composite Toe, XTR® Brand Composite Toe, Slip Resistant (SRC), Water Resistant

### Bullet Points

- High top classic basketball-inspired designs offer optimal support and stability
- Water resistant (S3) rated leather upper
- Durable slip resistant rubber outsole keeps sneakers tough against any work environment
- MemoryTech Memory Foam Cushion Footbed adds extra shock absorption and cushion
- XTR® brand composite toe reduces weight while maintaining impact protection (meets or exceeds EN20345)
- 360 degree sidewall stitch for long-lasting durability

# EXCEL LIGHT SAFETY



Reebok 

# Excel Light

## Athletic Mid Cut - S3 SRC



**Style** R1037  
**Gender** Men's  
**Toe** Alloy  
**Upper** Water Resistant Leather  
**Color** Black  
**Size** 3 - 13

**Slip** SRC  
**Oil** Better  
**Metal Chips** Good  
**Heat** Good  
**Abrasion** Better  
**Chemicals** Better

**Lining** Breathable Moisture Wicking Mesh

**Insole** MemoryTech Massage Removable Cushion Footbed

**Outsole** Rubber Bottom and Lightweight Injected EVA Cushion Midsole

**Special Features** No Exposed Metal on Upper, Non-Metallic Puncture Resistant Midsole Plate

### Product Description

Excel Light achieves maximum lightness and flexibility in a work shoe. With flex grooves, the lightweight injected EVA foam midsole reduces weight and allows for greater range of motion. Mesh uppers allow for ultimate breathability and moisture transfer for all day cooling comfort. A MemoryTech footbed adapts to the unique contours of your foot.

### Product Features

EN ISO 20345, S3, Aluminum Toe, Anti-Static, Puncture Resistant Midsole, Slip Resistant (SRC), Water Resistant

### Bullet Points

- Non-metallic, puncture resistant, and composite fabric plate is lighter and more flexible than a steel plate while providing maximum protection with 100% foot surface coverage.
- MemoryTech footbed adapts to the contours of your foot.
- Aluminum toe cap reduces weight while maintaining impact protection (meets or exceeds EN ISO 20345 safety standards).
- Slip resistance on steel ground with glycerine (Requirement EN ISO 20345) Heel 7° ≥ 0,13 RESULT = 0,26 Level ≥ 0,18 RESULT = 0,28
- Slip resistance on ceramic ground with detergent (Requirement EN ISO 20345) Heel 7° ≥ 0,28 RESULT = 0,55 Level ≥ 0,32 RESULT = 0,66

# Excel Light

## Athletic Work Shoe - S3 SRC



**Style** R1036  
**Gender** Men's  
**Toe** Alloy  
**Upper** Water Resistant Leather  
**Color** Black  
**Size** 3 - 13



**Slip** SRC  
**Oil** Better  
**Metal Chips** Good  
**Heat** Good  
**Abrasion** Better  
**Chemicals** Better

**Lining** Moisture Wicking Nylon Mesh  
**Insole** MemoryTech Massage Removable Cushion Footbed  
**Outsole** Rubber Bottom and Lightweight Injected EVA Cushion Midsole  
**Special Features** No Exposed Metal on Upper, Non-Metallic Puncture Resistant Midsole Plate

### Product Description

Excel Light achieves maximum lightness and flexibility in a work shoe. With flex grooves, the lightweight injected EVA foam midsole reduces weight and allows for greater range of motion. Mesh uppers allow for ultimate breathability and moisture transfer for all day cooling comfort. A MemoryTech footbed adapts to the unique contours of your foot.

### Product Features

EN ISO 20345, S3, Aluminum Toe, Anti-Static, Puncture Resistant Midsole, Slip Resistant (SRC), Water Resistant

### Bullet Points

- Non-metallic, puncture resistant, and composite fabric plate is lighter and more flexible than a steel plate while providing maximum protection with 100% foot surface coverage.
- MemoryTech footbed adapts to the contours of your foot.
- Aluminum toe cap reduces weight while maintaining impact protection (meets or exceeds EN ISO 20345 safety standards).
- Slip resistance on steel ground with glycerine (Requirement EN ISO 20345) Heel 7° ≥ 0,13 RESULT = 0,26 Level ≥ 0,18 RESULT = 0,28
- Slip resistance on ceramic ground with detergent (Requirement EN ISO 20345) Heel 7° ≥ 0,28 RESULT = 0,55 Level ≥ 0,32 RESULT = 0,66



## WOMEN'S Excel Light

### Athletic Work Shoe - S1P SRC



<b>Style</b>	R131
<b>Gender</b>	Women's
<b>Toe</b>	Alloy
<b>Upper</b>	Microfiber and Nylon Mesh
<b>Color</b>	Navy with Teal Trim
<b>Size</b>	3 - 8



<b>Slip</b>	SRC
<b>Oil</b>	Better
<b>Metal Chips</b>	Good
<b>Heat</b>	Good
<b>Abrasion</b>	Better
<b>Chemicals</b>	Better

**Lining** Breathable Moisture Wicking Mesh

**Insole** MemoryTech Memory Foam Removable Cushion Footbed

**Outsole** XL ExtraLight® Fuel, Oil, and Abrasion Resistant EVA Blend

**Special Features** No Exposed Metal on Upper, Non-Metallic Puncture Resistant Midsole Plate

#### Product Description

Excel Light achieves maximum lightness and flexibility in a work shoe. With flex grooves, the XL ExtraLight® foam midsole reduces weight and allows for greater range of motion. Mesh uppers allow for ultimate breathability and moisture transfer for all day cooling comfort. A MemoryTech footbed adapts to the unique contours of your foot.

#### Product Features

EN ISO 20345, S1P, Aluminum Toe, Anti-Static, Puncture Resistant Midsole, Slip Resistant (SRC)

#### Bullet Points

- Non-metallic, puncture resistant, and composite fabric plate is lighter and more flexible than a steel plate while providing maximum protection with 100% foot surface coverage.
- MemoryTech footbed adapts to the contours of your foot
- Aluminum toe cap reduces weight while maintaining impact protection (meets or exceeds EN ISO 20345 safety standards).
- Slip resistance on steel ground with glycerine (Requirement EN ISO 20345) Heel 7° ≥ 0,13 RESULT = 0,26 Level ≥ 0,18 RESULT = 0,28
- Slip resistance on ceramic ground with detergent (Requirement EN ISO 20345) Heel 7° ≥ 0,28 RESULT = 0,55 Level ≥ 0,32 RESULT = 0,66

# Excel Light

## Athletic Mid Cut - S3 SRC



**Style** R1035  
**Gender** Men's  
**Toe** Alloy  
**Upper** Water Resistant Suede Leather  
**Color** Navy Blue  
**Size** 6 - 13

**Slip** SRC  
**Oil** Better  
**Metal Chips** Good  
**Heat** Good  
**Abrasion** Better  
**Chemicals** Better

- Lining** Breathable Moisture Wicking Mesh
- Insole** MemoryTech Memory Foam Removable Cushion Footbed
- Outsole** XL ExtraLight® Fuel, Oil, and Abrasion Resistant EVA Blend
- Special Features** No Exposed Metal on Upper, Non-Metallic Puncture Resistant Midsole Plate

### Product Description

Excel Light achieves maximum lightness and flexibility in a work shoe. With flex grooves, the XL ExtraLight® foam midsole reduces weight and allows for greater range of motion. Mesh uppers allow for ultimate breathability and moisture transfer for all day cooling comfort. A MemoryTech footbed adapts to the unique contours of your foot.

### Product Features

EN ISO 20345, S3, Aluminum Toe, Anti-Static, Puncture Resistant Midsole, Slip Resistant (SRC), Water Resistant

### Bullet Points

- Non-metallic, puncture resistant, and composite fabric plate is lighter and more flexible than a steel plate while providing maximum protection with 100% foot surface coverage.
- MemoryTech footbed adapts to the contours of your foot.
- Aluminum toe cap reduces weight while maintaining impact protection (meets or exceeds EN ISO 20345 safety standards).
- Slip resistance on steel ground with glycerine (Requirement EN ISO 20345) Heel 7° ≥ 0,13 RESULT = 0,26 Level ≥ 0,18 RESULT = 0,28
- Slip resistance on ceramic ground with detergent (Requirement EN ISO 20345) Heel 7° ≥ 0,28 RESULT = 0,55 Level ≥ 0,32 RESULT = 0,66

# FUSION FLEXWEAVE™ WORK



# Reebok

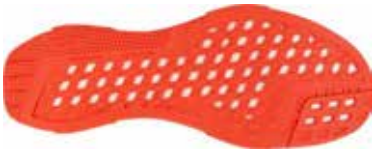


# Fusion Flexweave™ Work

## Athletic Work Shoe - S1P SRC



**Style** R1076  
**Gender** Men's  
**Toe** Composite  
**Upper** Ultraknit and Flexweave™  
**Color** Black, White, and Orange  
**Size** 3 - 13



**Slip** SRC  
**Oil** Better  
**Metal Chips** Good  
**Heat** Good  
**Abrasion** Better  
**Chemicals** Better

**Lining** Moisture Wicking Nylon Mesh

**Insole** EVA Cushion Removable Footbed

**Outsole** Floatride Energy Foam Midsole and Rubber Slip Resistant Outsole

**Special Features** Flexweave™, Floatride Energy Foam, Extra Wide Toe, 100% Non-Metallic,

### Product Description

With a Floatride Energy foam midsole, the Fusion Flexweave™ Work provides cushioning with a kick. Floatride Energy foam is supportive, highly responsive, and lighter than traditional EVA. The Flexweave™ fabric delivers flexible support, lightweight durability, and breathable strength, allowing you to put more muscle into every fibre. The slip resistant rubber outsole features visual footmapping for adaptive, multi-dimensional flexibility.

### Product Features

EN ISO 20345, S1P, Composite Toe, XTR® Brand Composite Toe, Slip Resistant (SRC), Anti-Static

### Bullet Points

- Ultraknit and Flexweave™ upper for lightweight durable support with breathability and strength.
- Floatride Energy foam midsole is lighter than traditional EVA
- Floatride Energy midsole is flexible, resilient, and provides premium responsive cushioning
- Slip resistant rubber outsole with footmapping for adaptive flexibility
- Composite toe meets or exceeds EN ISO 20345 safety standards

# FUSION FORMIDABLE WORK



Reebok 



# Fusion Formidable Work

## Athletic Work Shoe - S3 SRC



**Style** R1080  
**Gender** Men's  
**Toe** Composite  
**Upper** High Quality Water Resistant Leather  
**Color** Black  
**Size** 6 - 13

**Slip** SRC  
**Oil** Better  
**Metal Chips** Good  
**Heat** Good  
**Abrasion** Better  
**Chemicals** Better

**Lining** Moisture Wicking Nylon Mesh

**Insole** EVA Cushion Removable Footbed

**Outsole** Floatride Energy Foam Midsole and Rubber Slip Resistant Outsole

**Special Features** Floatride Energy Foam, Extra Wide Toe, 100% Non-Metallic

### Product Description

With a Floatride Energy foam midsole, the Fusion Formidable Work provides cushioning with a kick. Floatride Energy foam is supportive, highly responsive, and lighter than traditional EVA. The Formidable all leather upper takes on the most aggressive work environments. The slip resistant rubber outsole features visual footmapping for adaptive, multi-dimensional flexibility.

### Product Features

EN ISO 20345, S3, Composite Toe, XTR® Brand Composite Toe, Slip Resistant (SRC), ESD/DR

### Bullet Points

- All-leather crazy horse upper protects against the most aggressive work environments
- Floatride Energy foam midsole is lighter than traditional EVA
- Floatride Energy midsole is flexible, resilient, and provides premium responsive cushioning
- Slip resistant rubber outsole with footmapping for adaptive flexibility
- Composite toe meets or exceeds EN ISO 20345 safety standards





# Fusion Formidable Work

## Athletic Mid Work Shoe - S3 SRC



**Style** R1081  
**Gender** Men's  
**Toe** Composite  
**Upper** High Quality Water Resistant Leather  
**Color** Black  
**Size** 6 - 13

**Slip** SRC  
**Oil** Better  
**Metal Chips** Good  
**Heat** Good  
**Abrasion** Better  
**Chemicals** Better

**Lining** Moisture Wicking Nylon Mesh

**Insole** EVA Cushion Removable Footbed

**Outsole** Floatride Energy Foam Midsole and Rubber Slip Resistant Outsole

**Special Features** Floatride Energy Foam, Extra Wide Toe, 100% Non-Metallic

### Product Description

With a Floatride Energy foam midsole, the Fusion Formidable Work provides cushioning with a kick. Floatride Energy foam is supportive, highly responsive, and lighter than traditional EVA. The Formidable all leather upper takes on the most aggressive work environments. The slip resistant rubber outsole features visual footmapping for adaptive, multi-dimensional flexibility.

### Product Features

EN ISO 20345, S3, Composite Toe, XTR® Brand Composite Toe, Slip Resistant (SRC), Anti-Static

### Bullet Points

- All-leather crazy horse upper protects against the most aggressive work environments
- Floatride Energy foam midsole is lighter than traditional EVA
- Floatride Energy midsole is flexible, resilient, and provides premium responsive cushioning
- Slip resistant rubber outsole with footmapping for adaptive flexibility
- Composite toe meets or exceeds EN ISO 20345 safety standards

# ROYAL GLIDE



# SPEED TR SAFETY





## WOMEN'S Royal Glide

### Classic Work Sneaker



- Lining** Microfiber Lining
- Insole** MemoryTech Massage Footbed
- Outsole** EVA Midsole with SR Rubber Bottom
- Special Features** Extra Wide Toe, 100% Non-Metallic

#### Product Description

Elevate your workday style with these iconic classic leather sneakers. Add these to your rotation for instant throwback style and easy, everyday wear. These iconic kicks offer extra stability with a TPU heel clip and a high abrasion classic rubber outsole that offers durability and superior traction when you need it most.

#### Product Features

EN ISO 20345, S1P, Composite Toe, XTR® Brand Composite Toe, Anti-Static, Puncture Resistant Midsole, Slip Resistant (SRC)

- Style** R109
- Gender** Women's
- Toe** Composite
- Upper** Suede Leather
- Color** Navy and Blue
- Size** 3 - 8

- Slip** SRC
- Oil** Better
- Metal Chips** Better
- Heat** Better
- Abrasion** Better
- Chemicals** Better

#### Bullet Points

- Show off your enviable leather classic upper with each stride
- Classic low cut suede leather legacy style for easy, daylong work
- MemoryTech Massage footbed adapts to the contours of your foot and provides immediate cushioning
- Subtle iconic side profile for instant throwback style
- High abrasion rubber outsole offers time-tested traction and durability
- TPU heel clip for extra stability

# Speed TR Safety

## Athletic Safety Shoe



**Style** R4453

**Gender** Men's

**Toe** Composite

**Upper** Technical Fabric without seams

**Color** Grey and Black

**Size** 3 - 13



**Lining** Moisture Wicking Nylon Mesh

**Insole** MemoryTech Removable Cushion Footbed

**Outsole** Dual Density Slip Resistant Rubber Bottom with RopePro Traction

**Special Features** 100% Non-Metallic, Flex Grooves on Outsole, TPU Stability Zone, Extra Wide Toe

### Product Description

Take it up another notch at work with the propulsion and movement of the Speed TR Work. These training shoes are made for quick freedom of movement while also ensuring stability that matches speed. Metasplit flex grooves and RopePro traction on the rubber outsole allow for the versatile all-directional movement while the low profile platform frees up range of motion and quick transitions. The TPU Stability Zone gives plenty of stability and support while also helping with heavy lifting and shock absorption.

### Product Features

EN ISO 20345:2022, S1P, Puncture Resistant Midsole, XTR Composite Toe, Slip Resistant, ESD



### Bullet Points

- TPU Stability Zone for flared stability and zone support, supporting heavy lifting and shock
- Metasplit Flex Grooves on Rubber Outsole for multidirectional movement and traction
- MemoryTech Memory Foam Footbed adapts to the contours of your foot
- Dual Density Slip Resistant Rubber Bottom with RopePro Traction for extra grip
  
- Extra Wide Composite Toe reduces weight while maintaining impact protection

# Speed TR Safety

## Athletic Safety Shoe



- Style** R4450
- Gender** Men's
- Toe** Composite
- Upper** Technical Fabric without seams
- Color** Black
- Size** 3 - 13



- Lining** Moisture Wicking Nylon Mesh
- Insole** MemoryTech Removable Cushion Footbed
- Outsole** Dual Density Slip Resistant Rubber Bottom with RopePro Traction
- Special Features** 100% Non-Metallic, Flex Grooves on Outsole, TPU Stability Zone, Extra Wide Toe

### Product Description

Take it up another notch at work with the propulsion and movement of the Speed TR Work. These training shoes are made for quick freedom of movement while also ensuring stability that matches speed. Metasplit flex grooves and RopePro traction on the rubber outsole allow for the versatile all-directional movement while the low profile platform frees up range of motion and quick transitions. The TPU Stability Zone gives plenty of stability and support while also helping with heavy lifting and shock absorption.

### Product Features

EN ISO 20345:2022, S3, Puncture Resistant Midsole, XTR Composite Toe, Slip Resistant, ESD



### Bullet Points

- TPU Stability Zone for flared stability and zone support, supporting heavy lifting and shock
- Metasplit Flex Grooves on Rubber Outsole for multidirectional movement and traction
- MemoryTech Memory Foam Footbed adapts to the contours of your foot
- Dual Density Slip Resistant Rubber Bottom with RopePro Traction for extra grip
  
- Extra Wide Composite Toe reduces weight while maintaining impact protection

# TRAILGRIP SAFETY



Reebok 

# Trailgrip Safety

## Athletic Safety Shoe - S3 SRC



<b>Style</b>	R1050
<b>Gender</b>	Men's
<b>Toe</b>	Alloy
<b>Upper</b>	Water Resistant Leather, Microfiber, and Mesh
<b>Color</b>	Black
<b>Size</b>	6 - 13

<b>Slip</b>	SRC
<b>Oil</b>	Better
<b>Metal Chips</b>	Better
<b>Heat</b>	Better
<b>Abrasion</b>	Better
<b>Chemicals</b>	Better

<b>Lining</b>	Moisture Wicking Nylon Mesh
<b>Insole</b>	MemoryTech Massage Removable Cushion Footbed
<b>Outsole</b>	DMXRide Cushion Foam Midsole with Slip Resistant Rubber Outsole
<b>Special Features</b>	No Exposed Metal on Upper

### Product Description

Charge through work with the Reebok Trailgrip, featuring an active traction rubber lug pattern with outstanding gripping power. A MicroWeb lacing system keeps your foot locked in with lateral stability. The MemoryTech Massage footbed adapts to the contours of your foot. The aluminum toe meet or exceeds EN201345 safety standards.

### Product Features

EN ISO 20345, S3, Aluminum Toe, Anti-Static, Puncture Resistant Midsole, Slip Resistant (SRC), Water Resistant

### Bullet Points

- Water resistant (S3) rated leather upper
- DMXRide foam midsole for a responsive feel
- Slip resistant rubber outsole with an active traction lug pattern for durability and grip
- MicroWeb lacing system improves the fit and support
- MemoryTech memory foam footbed adapts to the contours of your foot
- Aluminum toe reduces weight while maintaining impact protection (meets or exceeds EN20345)



# Trailgrip Safety

## Athletic Safety Mid Cut - S3 SRC



<b>Style</b>	R1052
<b>Gender</b>	Men's
<b>Toe</b>	Alloy
<b>Upper</b>	Water Resistant Leather, Microfiber, and Mesh
<b>Color</b>	Black
<b>Size</b>	6 - 13



<b>Slip</b>	SRC
<b>Oil</b>	Better
<b>Metal Chips</b>	Better
<b>Heat</b>	Better
<b>Abrasion</b>	Better
<b>Chemicals</b>	Better

**Lining** Moisture Wicking Nylon Mesh

**Insole** MemoryTech Massage Removable Cushion Footbed

**Outsole** DMXRide Cushion Foam Midsole with Slip Resistant Rubber Outsole

**Special Features** No Exposed Metal on Upper

### Product Description

Charge through work with the Reebok Trailgrip, featuring an active traction rubber lug pattern with outstanding gripping power. A MicroWeb lacing system keeps your foot locked in with lateral stability. The MemoryTech Massage footbed adapts to the contours of your foot. The aluminum toe meet or exceeds EN ISO 201345 safety standards.

### Product Features

EN ISO 20345, S3, Aluminum Toe, Anti-Static, Puncture Resistant Midsole, Slip Resistant (SRC), Water Resistant

### Bullet Points

- Water resistant (S3) rated leather upper
- DMXRide foam midsole for a responsive feel
- Slip resistant rubber outsole with an active traction lug pattern for durability and grip
- MicroWeb lacing system improves the fit and support
- MemoryTech memory foam footbed adapts to the contours of your foot
- Aluminum toe reduces weight while maintaining impact protection (meets or exceeds EN ISO 201345)

# Reebok

## PERFORMANCE IN MOTION

R109 Women's Royal Glide



R131 Women's Excel Light



R1035 Excel Light



R1036 Excel Light



R1037 Excel Light



R1050 Trailgrip Safety



R1052 Trailgrip Safety



R1076 Fusion Flexweave Work



R1008/1 Fusion Flexweave Work



R4094 All Terrain Freedom



R4132 BB4500 Safety High Top



R4132 BB4500 Work Low Cut



R4450 Speed TR Safety



R4453 Speed TR Safety



R3610 FE4 Adventure Safety



R3611 FE4 Adventure Safety



R3613 FE4 Adventure Safety



# Reebok



Briggs Safetywear  
Himalayan House  
430 Thurmaston Boulevard  
Leicester. LE4 9LE  
T: 0116 2444 700  
E: sales@briggssafetywear.co.uk

[www.briggssafetywear.com](http://www.briggssafetywear.com)

