

PCW FREIGHTER VOYAGE EDITION

Part 1 (3)

14/3 - 3/4 - 2024

A voyage report from mv ABB VANESSA from Sines, Portugal to Soma, Japan

SPECIAL TRAVEL EDITION BY CHIEF EDITOR

PART ONE

SINES TO WESTERN CAPE



www.asiabreakbulk.com



www.coli-shipping.com



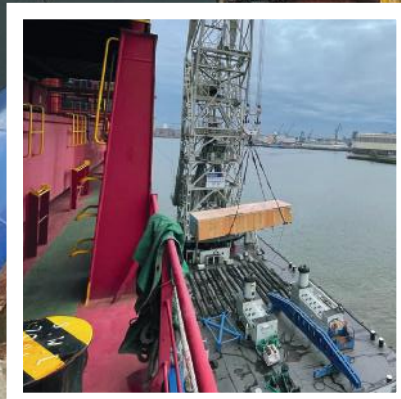
www.projectcargo-weekly.com

COLI
Logistics



Solutions beyond the ordinary!

Supporting you with **cost-effective
and reliable logistics** by managing
the entire supply chain so you can
focus on your core business



EDITORIAL

Dear Readers,

It is a pleasure for me to offer you this very special travel edition (part 1 of 3) today, the 9th of May, 2024.

Before I begin with my editorial, let me first give you a bit of a background to this special edition. I am in many ways an incarnated shipping man. I love the business, the people, and what it has given me by way of a career that started originally in 1980 in Aarhus, Denmark. For holidays, I even started traveling by container ship as a passenger in 2005. Since then I have (with the allowance of a variety of ex-wives ☺) been able to travel more or less every 2nd year. I also have been able to bring 3 of my 6 children along with me — 2 of them from Hamburg to Hong Kong and 1 of them from Southampton to Malta and Singapore to Melbourne (to name a few).

The main questions people always ask are: “Are you not bored onboard? Is there a shopping mall? Do you have internet? How about the food and Are you in a container or in a cabin? (well almost).

In short, this way of traveling gives me the following, (in random order):

- a valuable perspective on life
- learning to appreciate life and the value of missing people, things, etc.
- appreciating the time to really read books
- valuing not being interrupted neither by room service nor "kids"... so to speak
- incredible views of nature as the sky and the ocean change almost daily if not hourly
- some of the most spectacular sunsets and sunrises
- an incredible light, pollution-free sky, enabling you on a clear day to see the stars
- internet only available intermittently such as WhatsApp, etc. and otherwise good old-fashioned email but real surfing is difficult, and that is exactly what I wish to escape!

In other words you are **FORCED TO RELAX**, giving you a digital and mental detox. All you need to be alert of - that is if you like - is to get up for the breakfasts, lunches, and dinners, consisting of not a menu to choose from but generally hearty, solid food made for seafarers who do a day's job onboard.

I have finished 9 books of various sizes, shapes, and content during this trip. As a result, I have gotten wiser. For me, it surely beats googling and getting the instant gratification that we as parents are fighting our kids about (am I right?) as they hardly know how to read or how to stay focused anymore. You learn to focus onboard a cargo ship!

Seafarers are the true life blood of global commerce, and we ALL need to appreciate them not only in talking but also in doing.

EDITORIAL

So much for the background in doing this wonderful trip; one that goes into my memory as the longest unbroken voyage without going ashore that I have taken since 2005, i.e., 49 days from Sines, Portugal to Soma, Japan.

The availability of the supercargo cabin onboard mv ABB Vanessa, voyage 049, was made possible by the owner and founder of COLI Shipping Hamburg **Mr. Herbert Loesing**. We got to talking about this possibility because COLI Shipping has been active in project cargo shipbroking, chartering and logistics for decades.

They also charter vessels on a long term basis for more than 9 years with mv ABB Vanessa and others COLI Shipping have been immersed in project cargo Intra-Asia and Europe/Asia v.v, in particular completing several voyages per year. In my past as a project freight forwarder and today running a network of them, I have often dealt with COLI Shipping and their branches.



Mv ABB Vanessa, voy 049 departed the port of Emden, Germany ([see here](#)) and proceeded via Sines, Portugal to Soma Port, Japan via a short bunkering stop in Singapore. I boarded the vessel on the 14th of March in Sines, and my travel report thus starts on this day. Without a lot of writing, I simply decided to choose the best pictures and videos from each day of the voyage for you to enjoy.

Before boarding in Sines, I had the pleasure of meeting with the local agent of COLI Shipping and mv ABB Vanessa, Messrs Burmester & Stuve. With a proud history dating back many many decades, they are indeed as reliable as they come, and prove that people and relationships in shipping are paramount... also when it comes to local handling in port. ([see here](#)).

EDITORIAL

Shipping consists of PEOPLE. People network, and if you have a proper network, you almost don't need a bank. Networking and keeping contacts alive on a constant basis is the foundation for long term profitable business. Herbert knows this, and it has impressed me during his many decades in shipping just how many contacts he does have. This is one big reason for his being able to deal long term with business to/from Japan which certainly is a country where long term means just that... long term.

This Freighter Voyage Edition of Project Cargo Weekly could just as well be titled

SHIPPING IS PEOPLE & RELATIONSHIPS

My respects go out to local shipping agents, freight forwarders, surveyors, captains and crew, ship management companies, owners, cargo owners, trucking companies, travel agents handling seafarers to & from the vessel... and the list goes on.

Shipping and logistics, as mentioned before, IS the lifeblood of global trade, and it is a lifeline that hopefully cannot be severed. Just think back to the crisis in the Panama Canal, Red Sea and the Ever Given grounded in the Suez. Worldwide panic sets in immediately, and costs rise due to shipping being impaired.

I hope you will enjoy this travel edition(which is part 1 of 3).

The remaining 2 parts will be published as follows:

- May 16th, part 2 of 3
- May 23rd, part 3 of 3

We start the regular issue of PCW with in depth interviews again on May 30th.

Yours sincerely,

Bo H. Drewsen

bo.drewsen@projectcargo-weekly.com

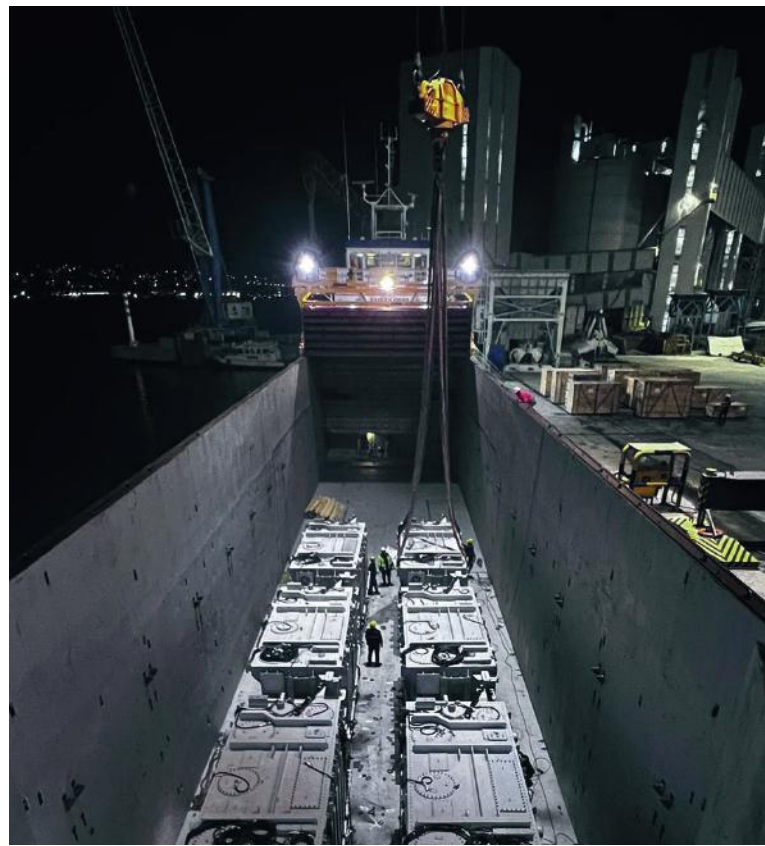
Editor in Chief of Project Cargo Weekly



TABLE OF CONTENTS

PCW FREIGHTER VOYAGE EDITION 2024	i
COLI LOGISTICS	ii
EDITORIAL	iii-v
TABLE OF CONTENTS	vi
CPC ISTANBUL	vii
PHOTOS/VIDEOS	-
14-17 MARCH	8-49
CARSTEN REHDER	50
PHOTOS/VIDEOS	-
18-22 MARCH	51-95
VICTORIA MARINE	96
PHOTOS/VIDEOS	-
23-27 MARCH	97-131
ABB SINGAPORE	132-133
PHOTOS/VIDEOS	-
28-31 MARCH	134-174
CPC JAPAN	175
PHOTOS/VIDEOS	-
01-03 APRIL	176-217
FOOD ONBOARD	218-243
VIDEO OF RESTAURANTS ONBOARD	243
PEOPLE ONBOARD	244-257
VIDEO OF CABIN ONBOARD	258
VIDEO OF ARRIVING SOMA JAPAN	259
PROJECT CARGO WEEKLY	260
COLI INTERVIEW WITH PROJECT CARGO WEEKLY	261
GET THE PCW MOBILE APP	262





CPC

COLI Project Cargo Ltd.



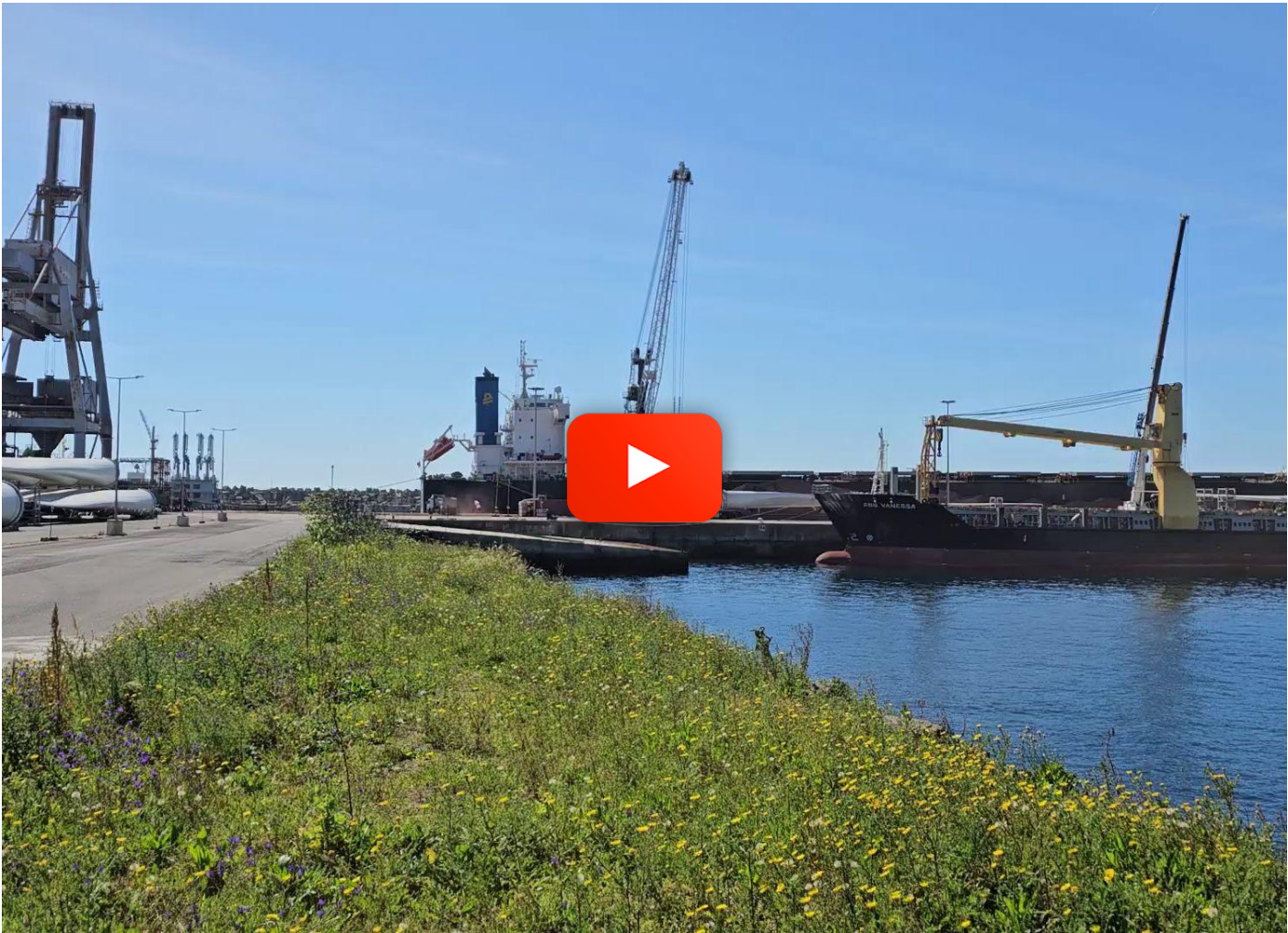
COLI PROJECT CARGO – ISTANBUL

+90 (533) 323 4272

istanbul@coli.com.tr

www.coli-shipping.com









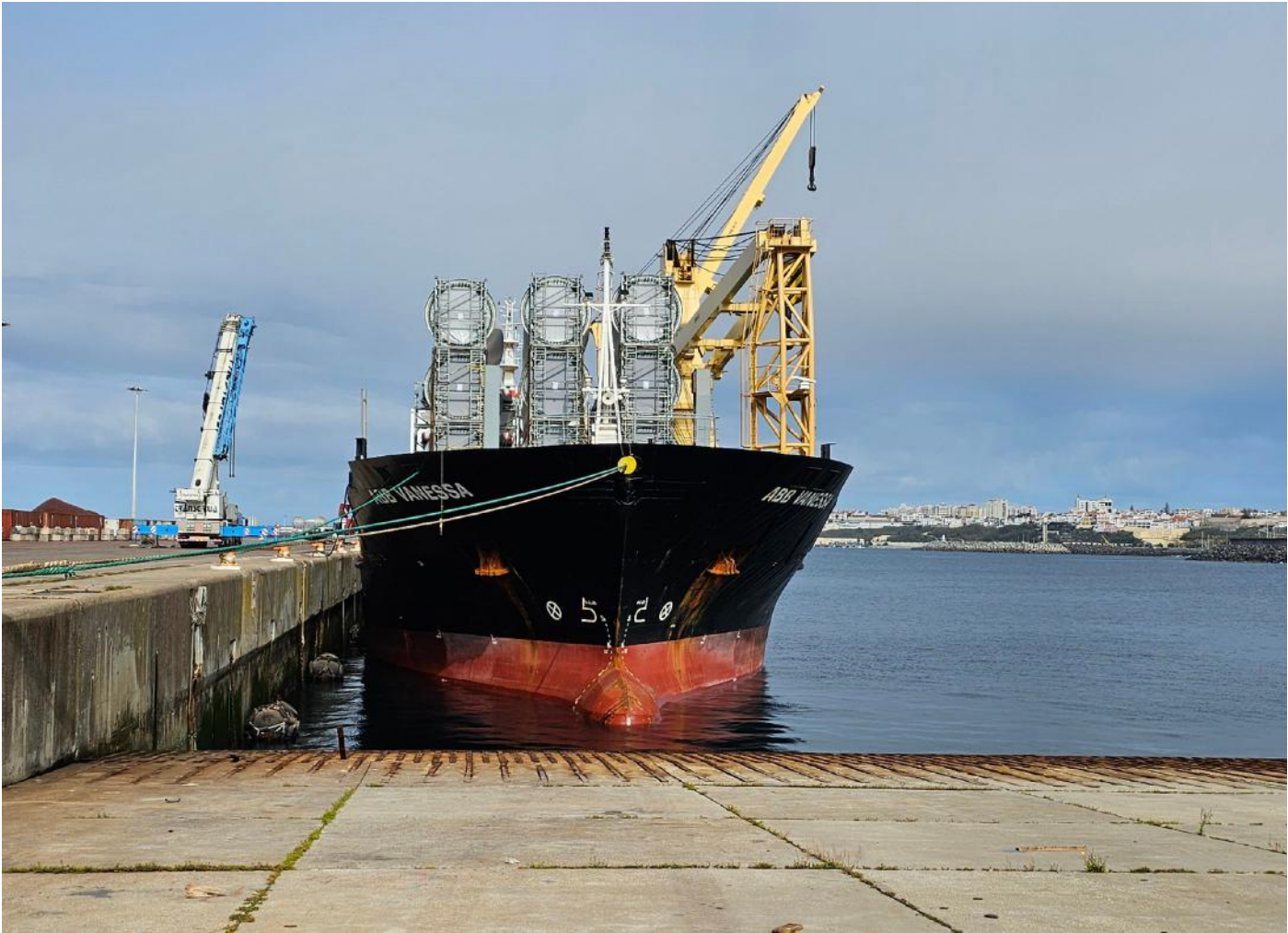






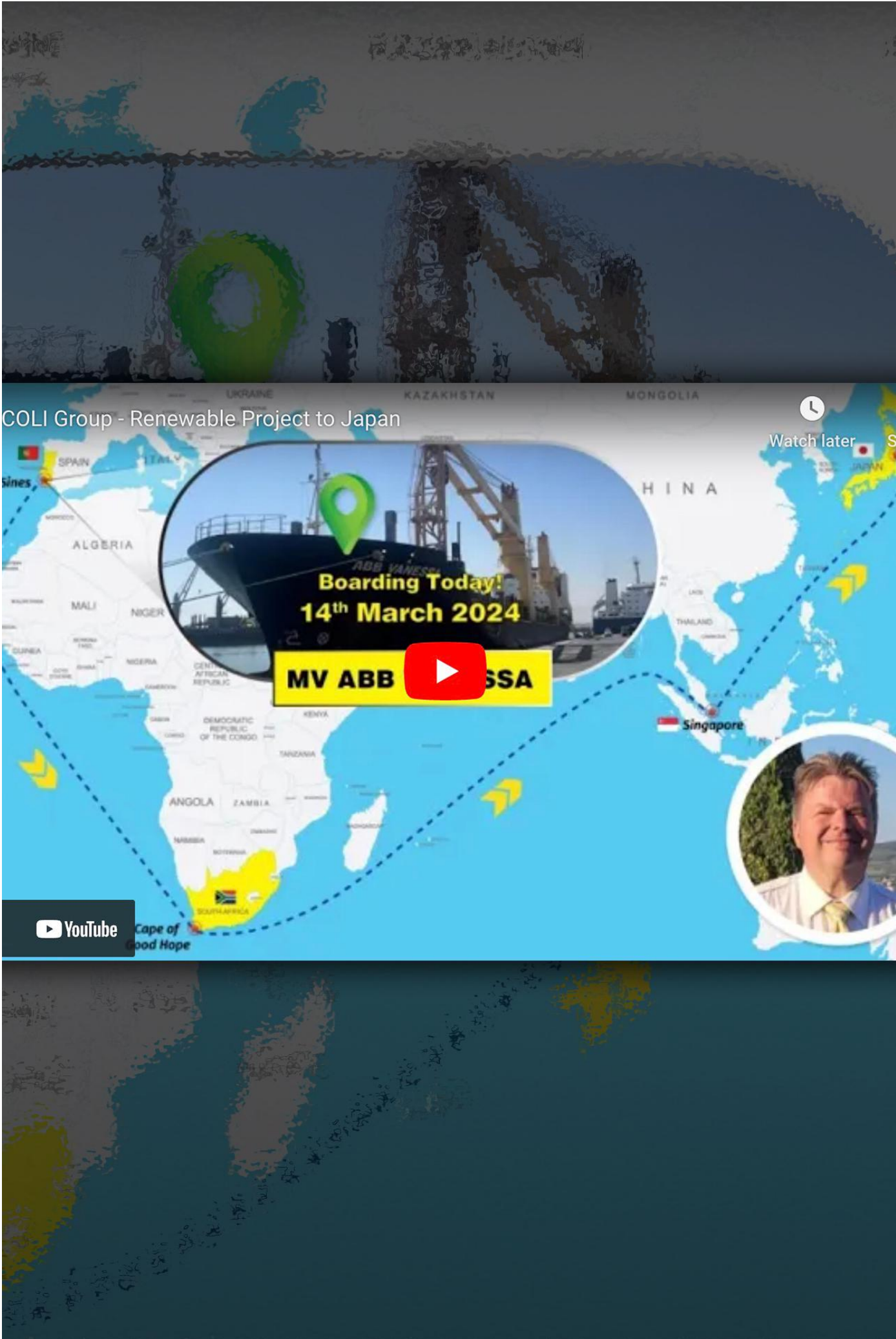




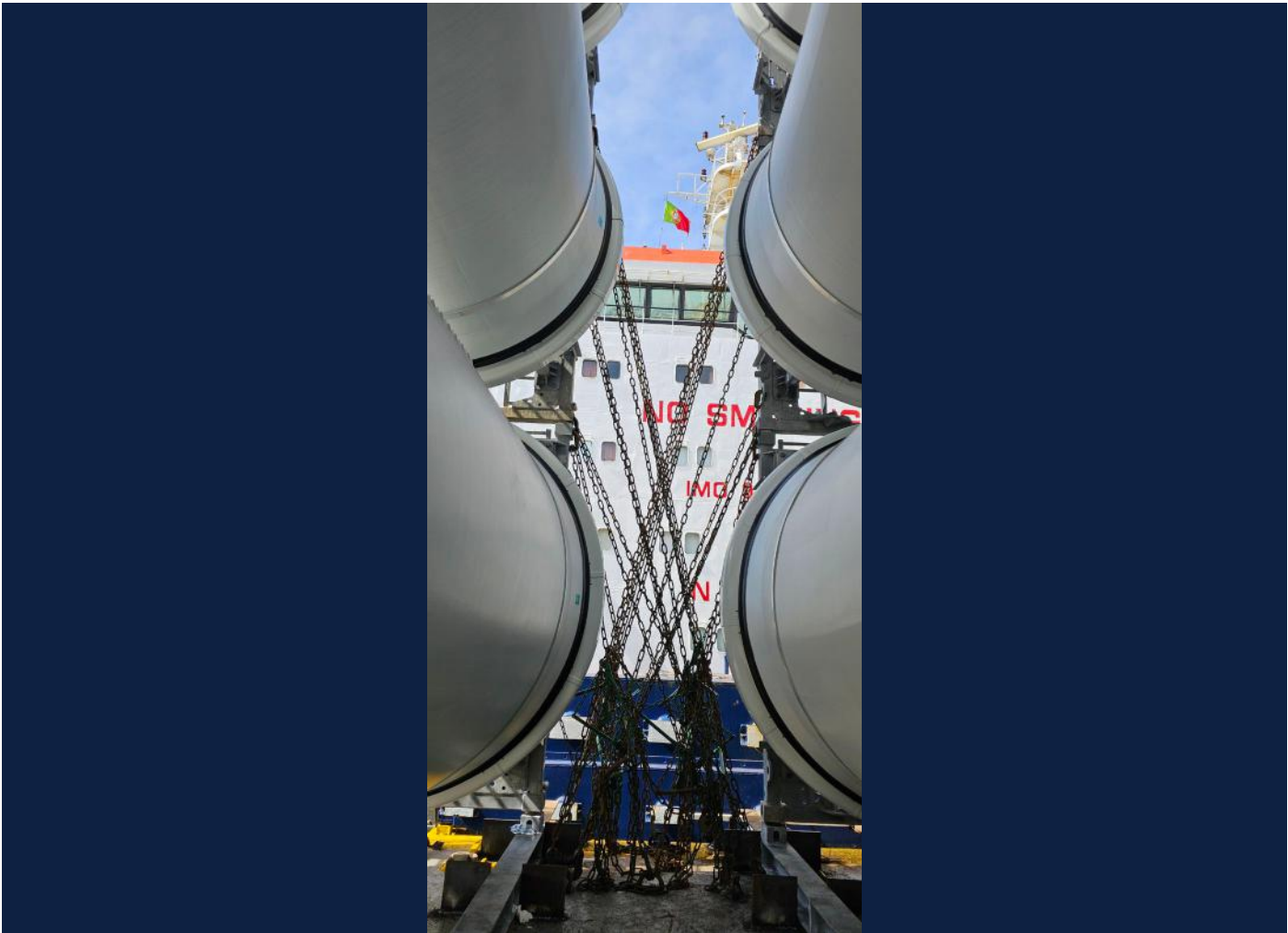
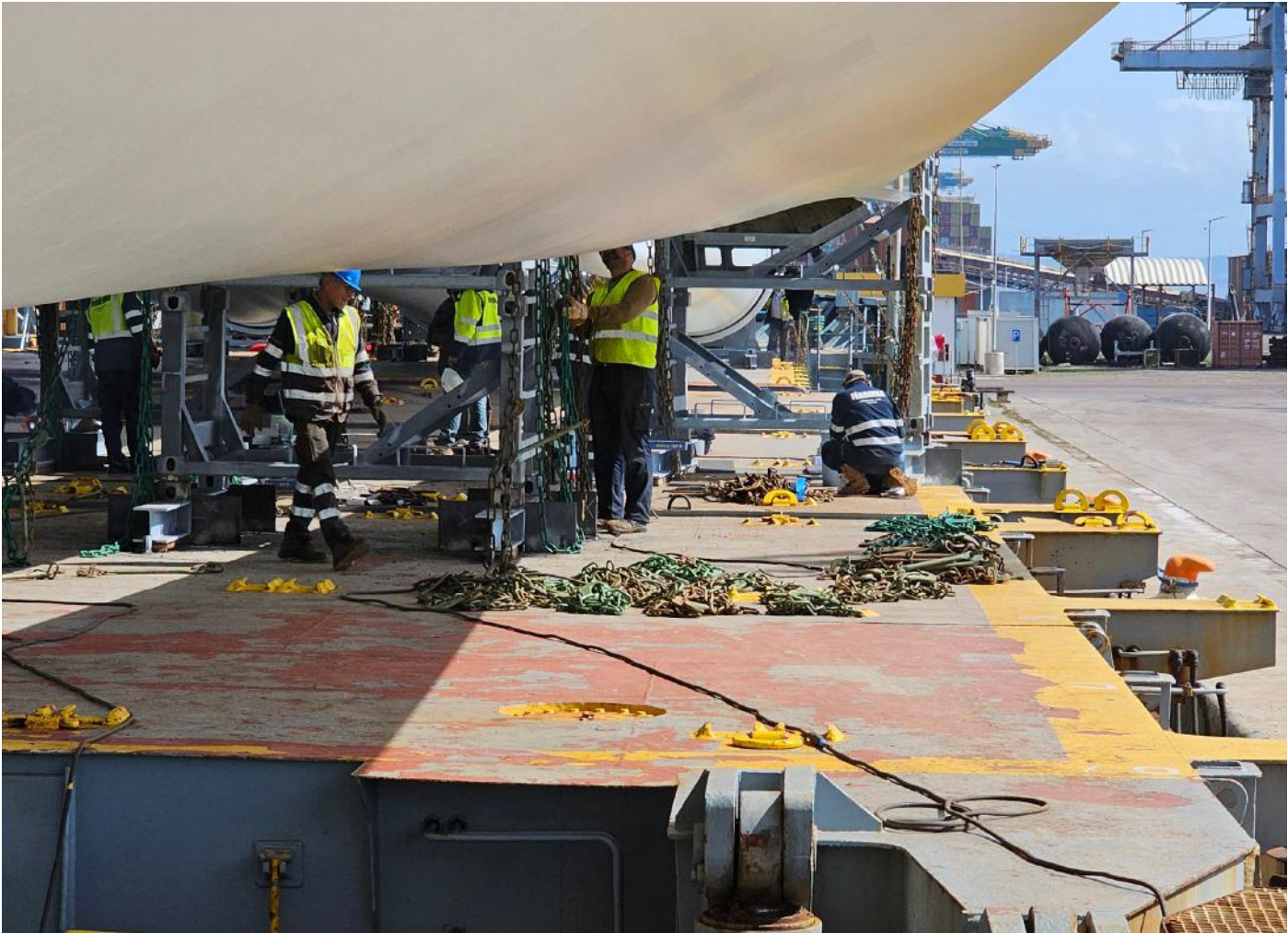


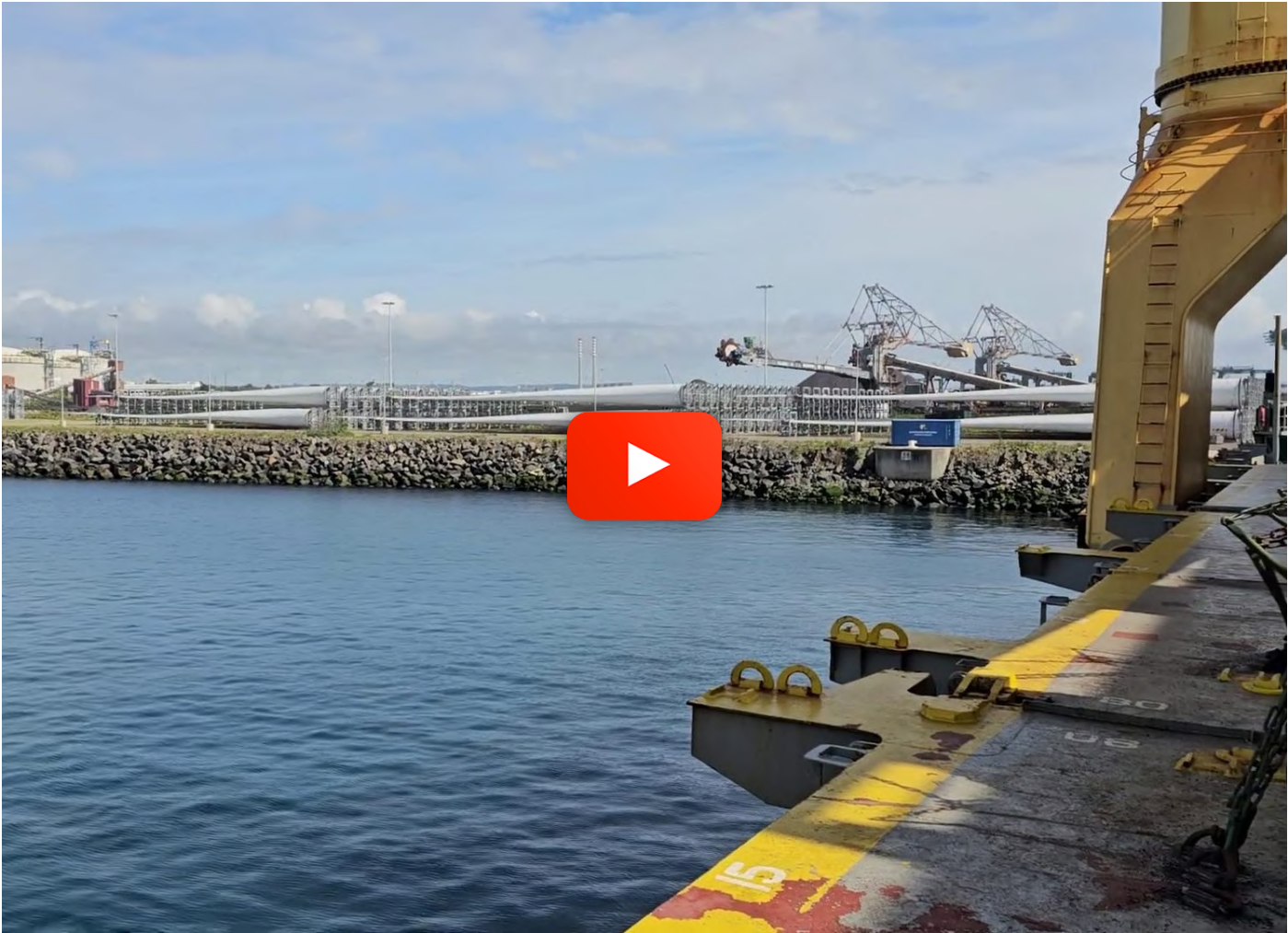












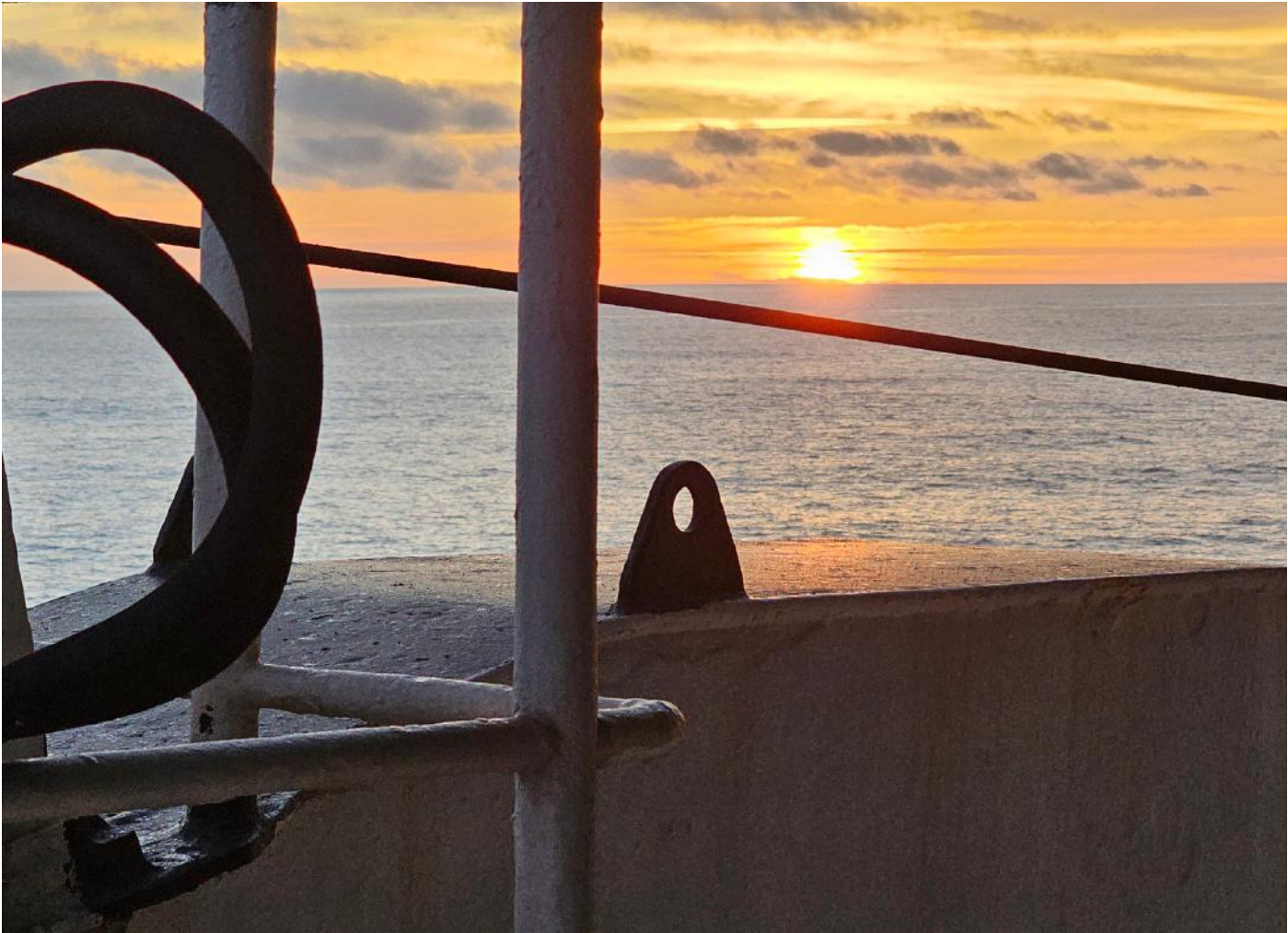




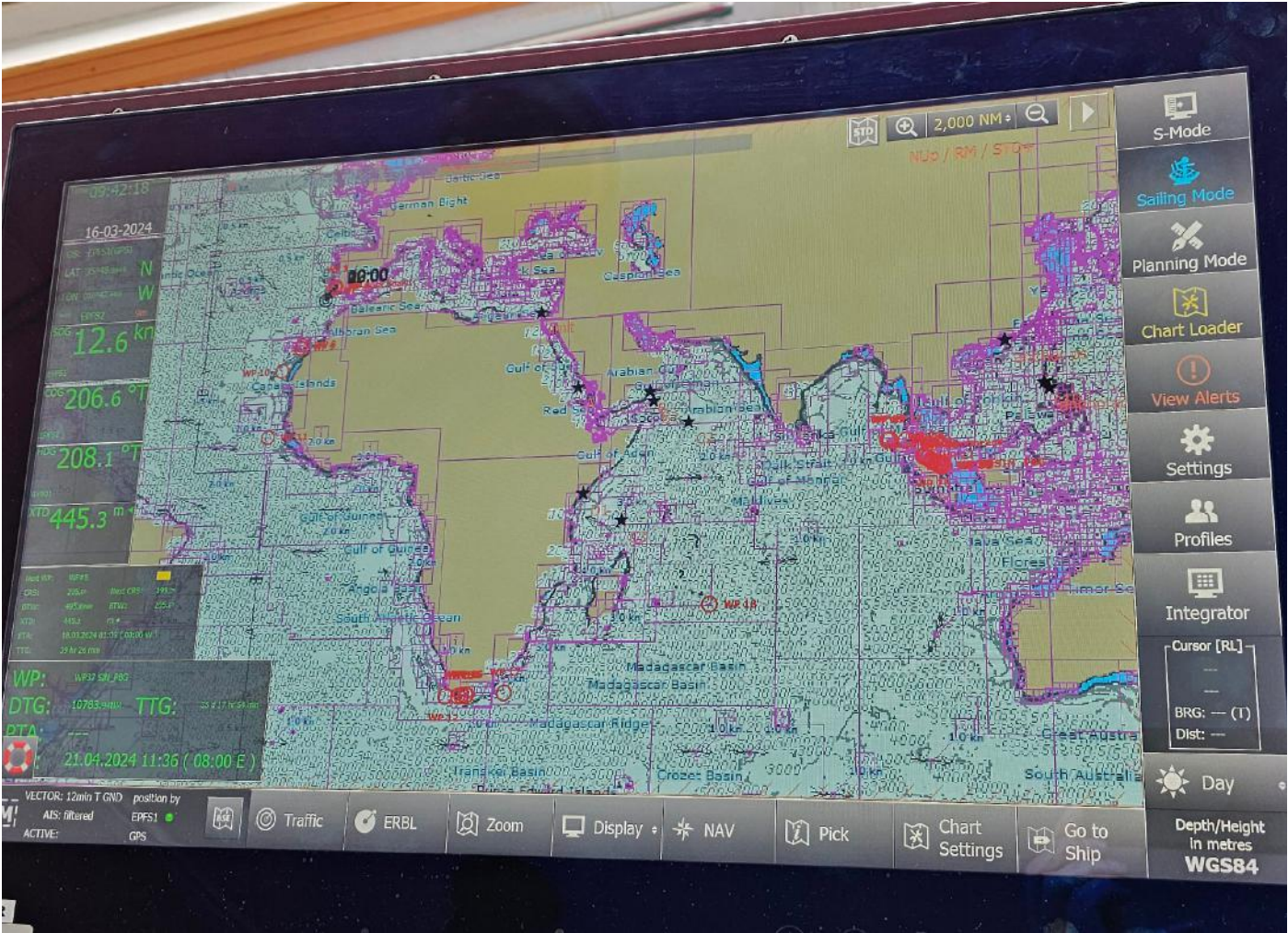








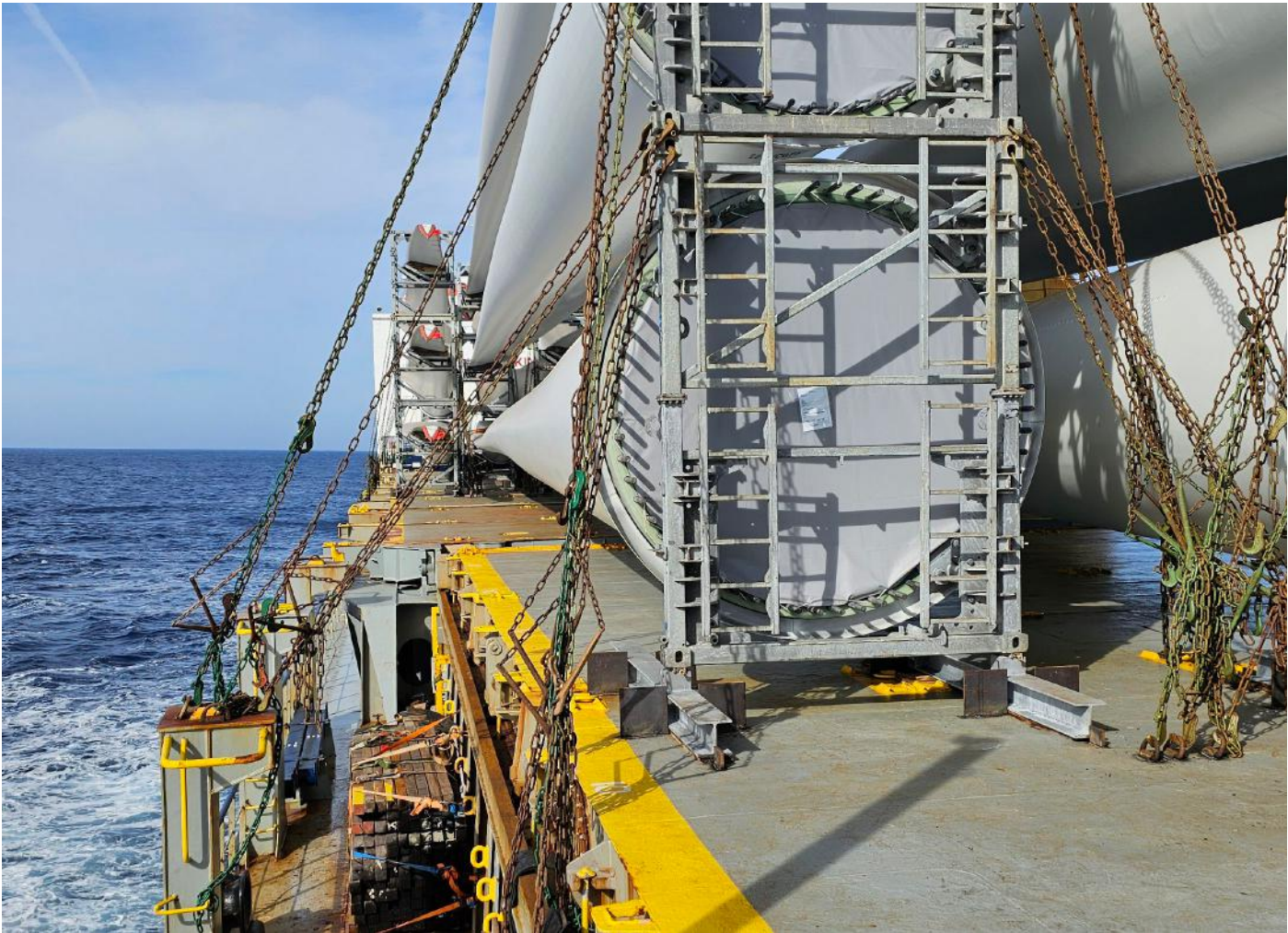




































SHIP'S PARTICULARS	
SHIP'S NAME:	<u>" ABB VANESSA "</u>
CALL SIGN:	<u>"CQQS"</u>
IMO NO.:	<u>9437309</u>
FLAG:	<u>PORTUGAL</u>
PORT OF REGISTRY:	<u>MADEIRA</u>
MMSI NO:	<u>255803280</u>
GRT:	<u>9611 T</u>
SUEZ:	<u>9636.6 T</u>
NT:	<u>4260 T</u>
LOA:	<u>138.93 m</u>
BEAM (WIDTH):	<u>21 m</u>
DEPTH (MOLDED):	<u>11m</u>
AIR DRAFT:	<u>40.3 m</u>





STRAIT

CARSTEN REHDER
SHIP OWNERS



**TAILOR-MADE SHIPPING
SOLUTIONS SINCE 1903**

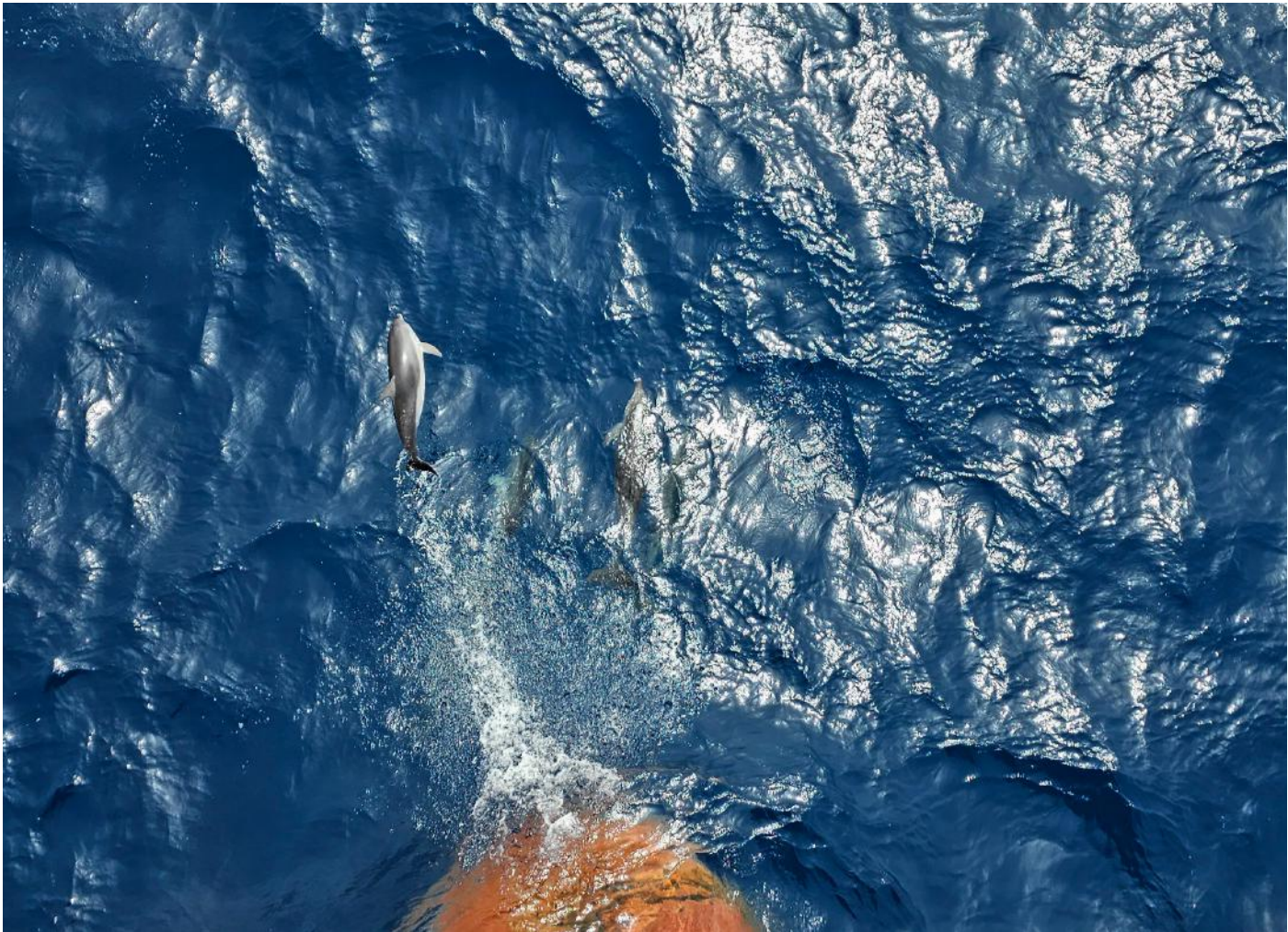
**Ship Owning | Project Development
Ship Management | Ship Broking**

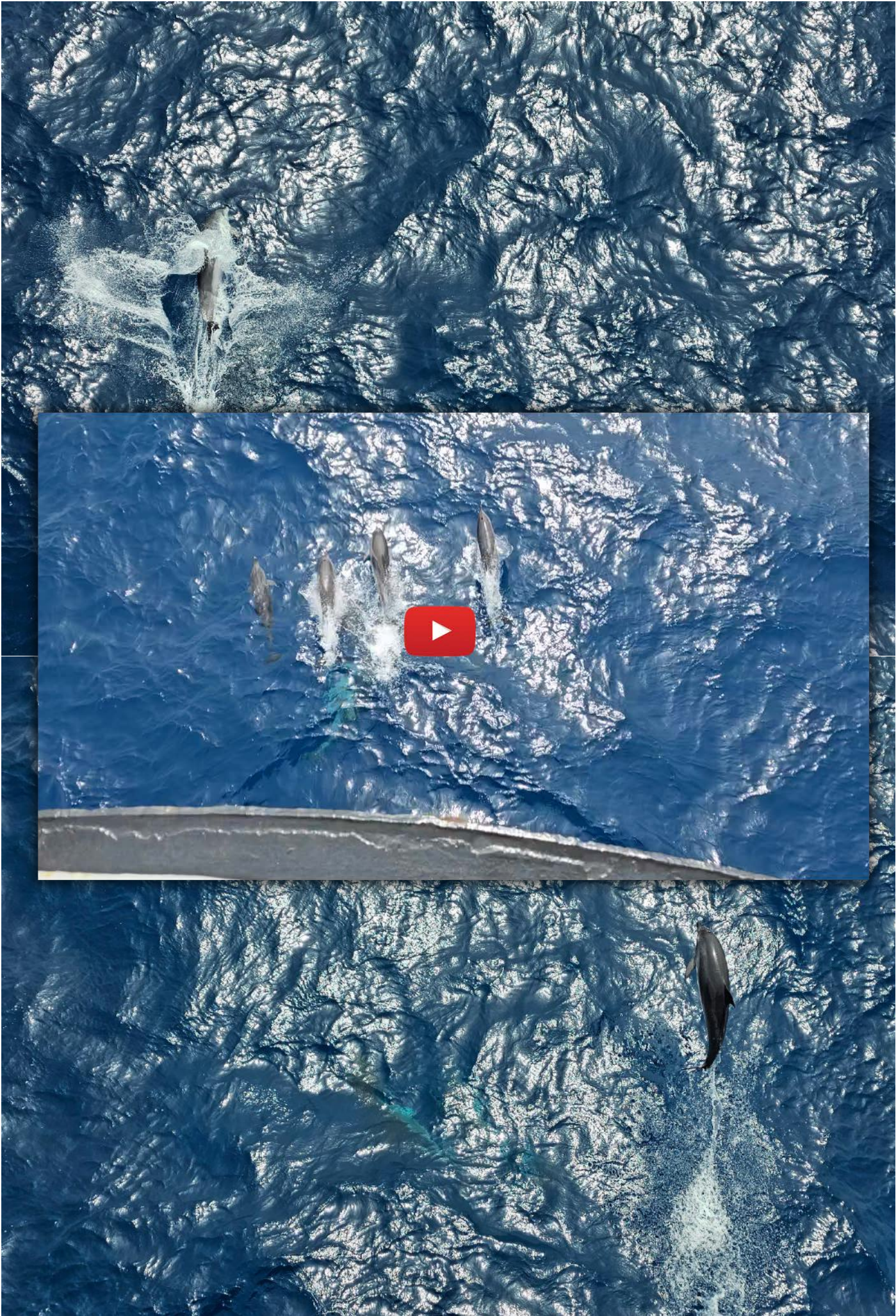
Container | Dry Bulk | Multi-Purpose

WWW.CARSTENREHDER.DE











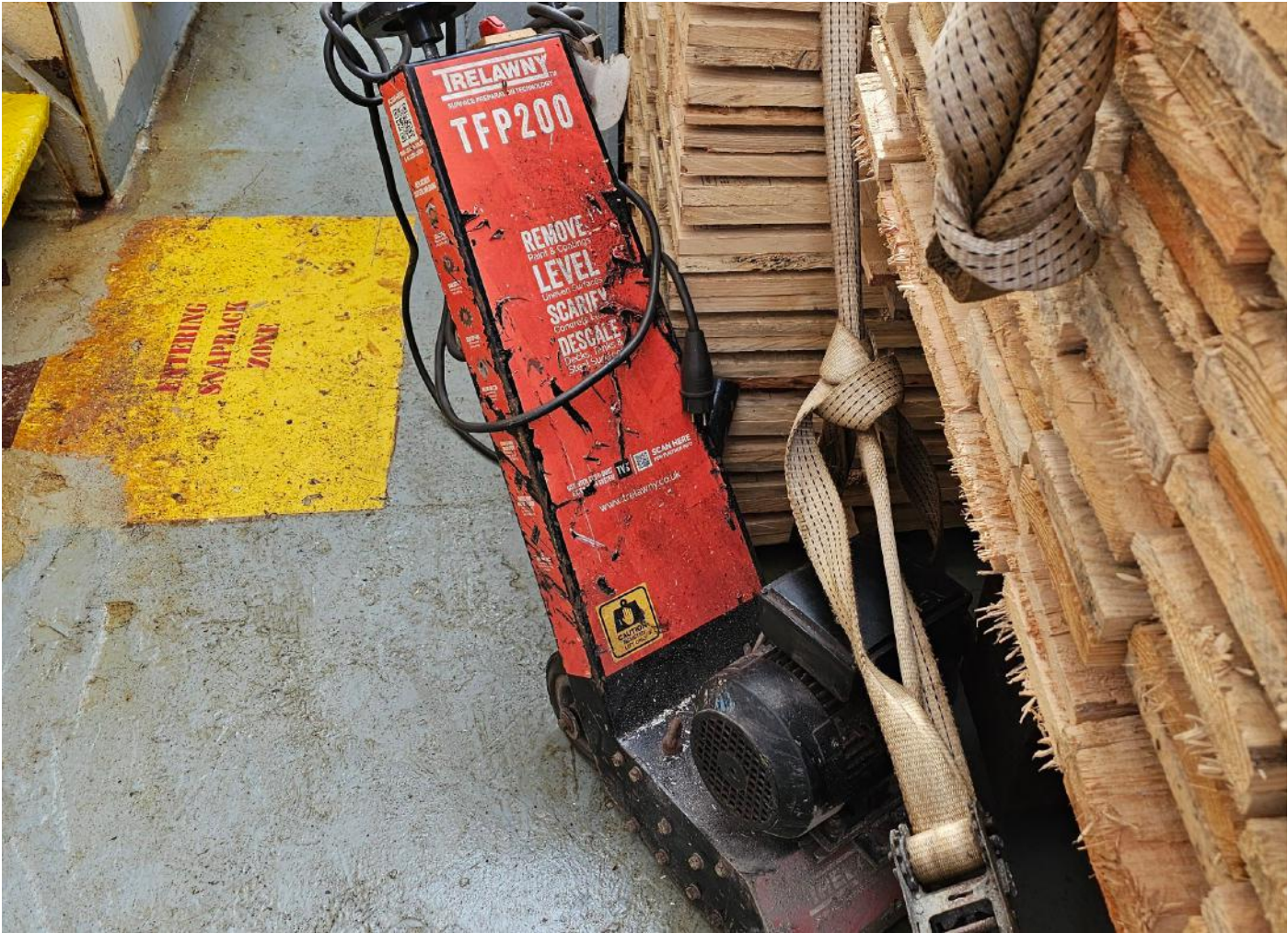




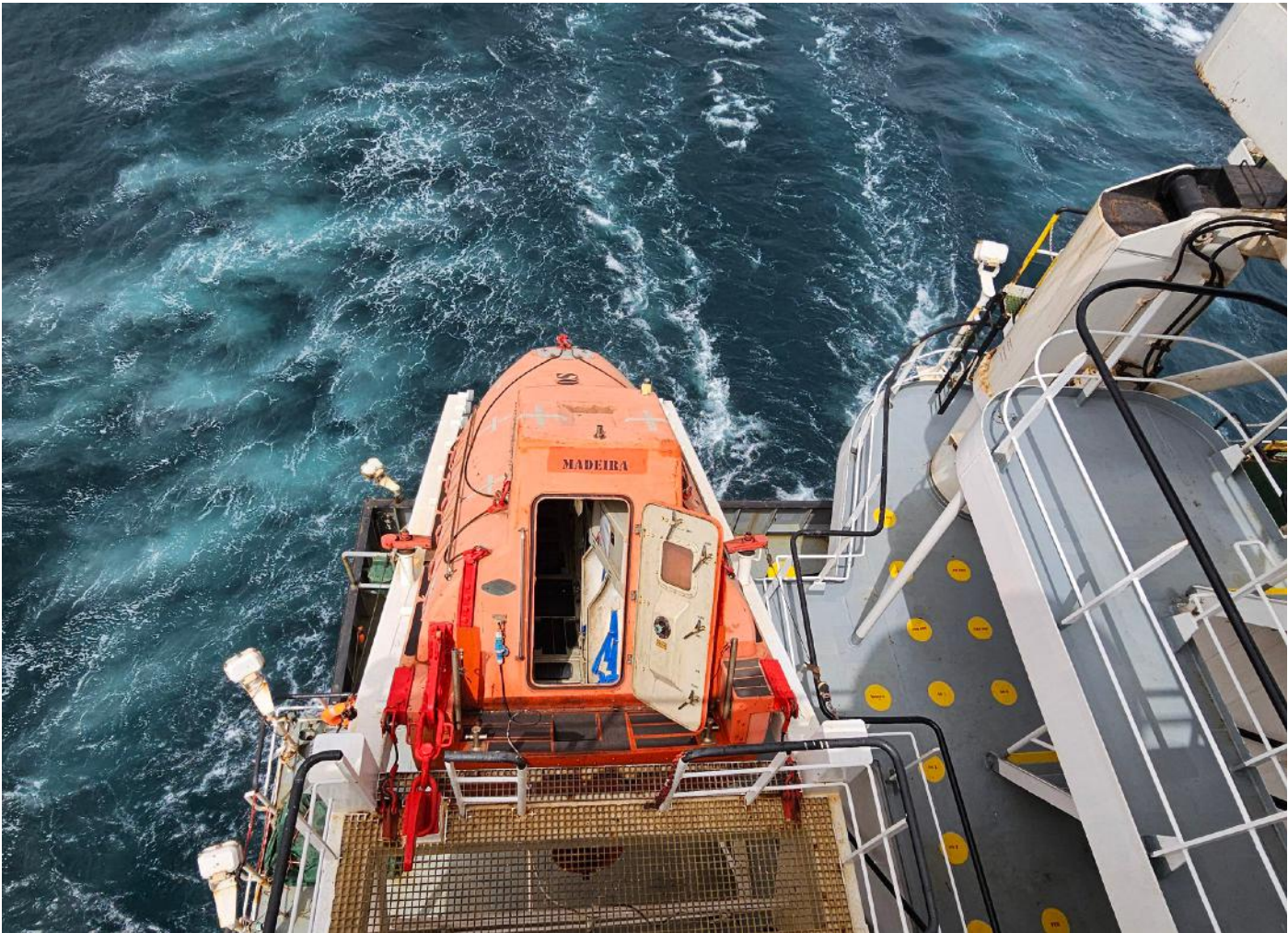






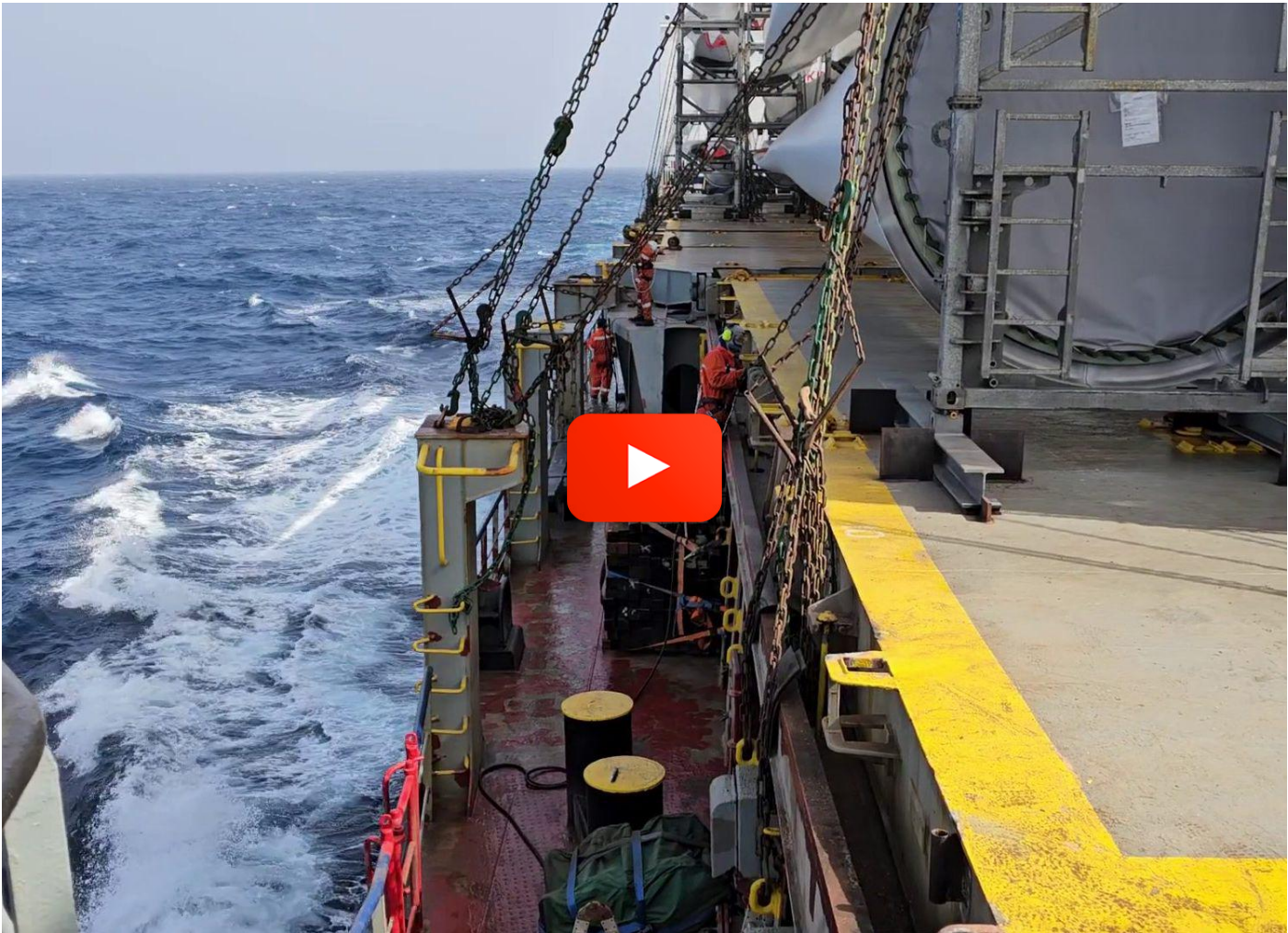
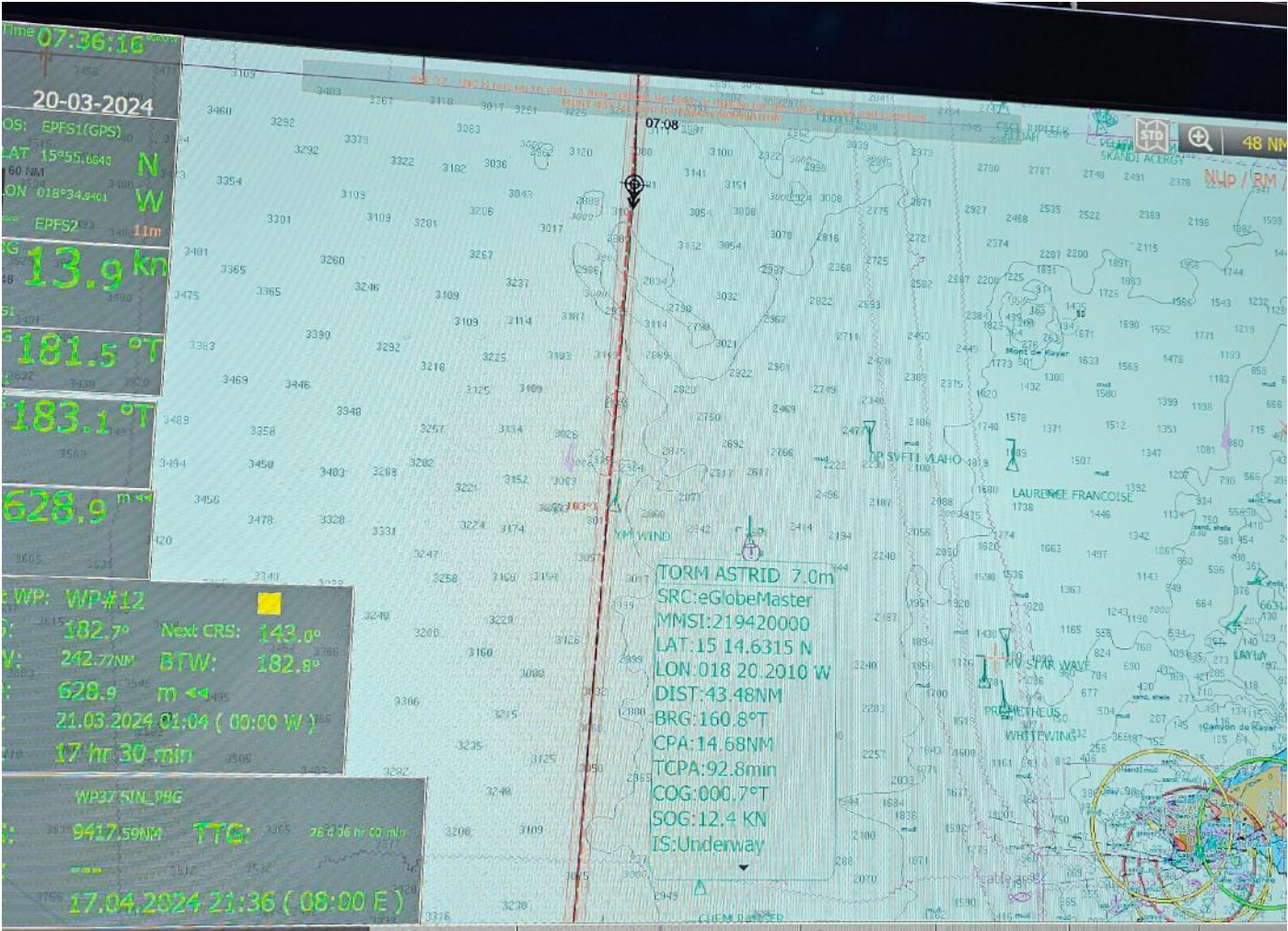


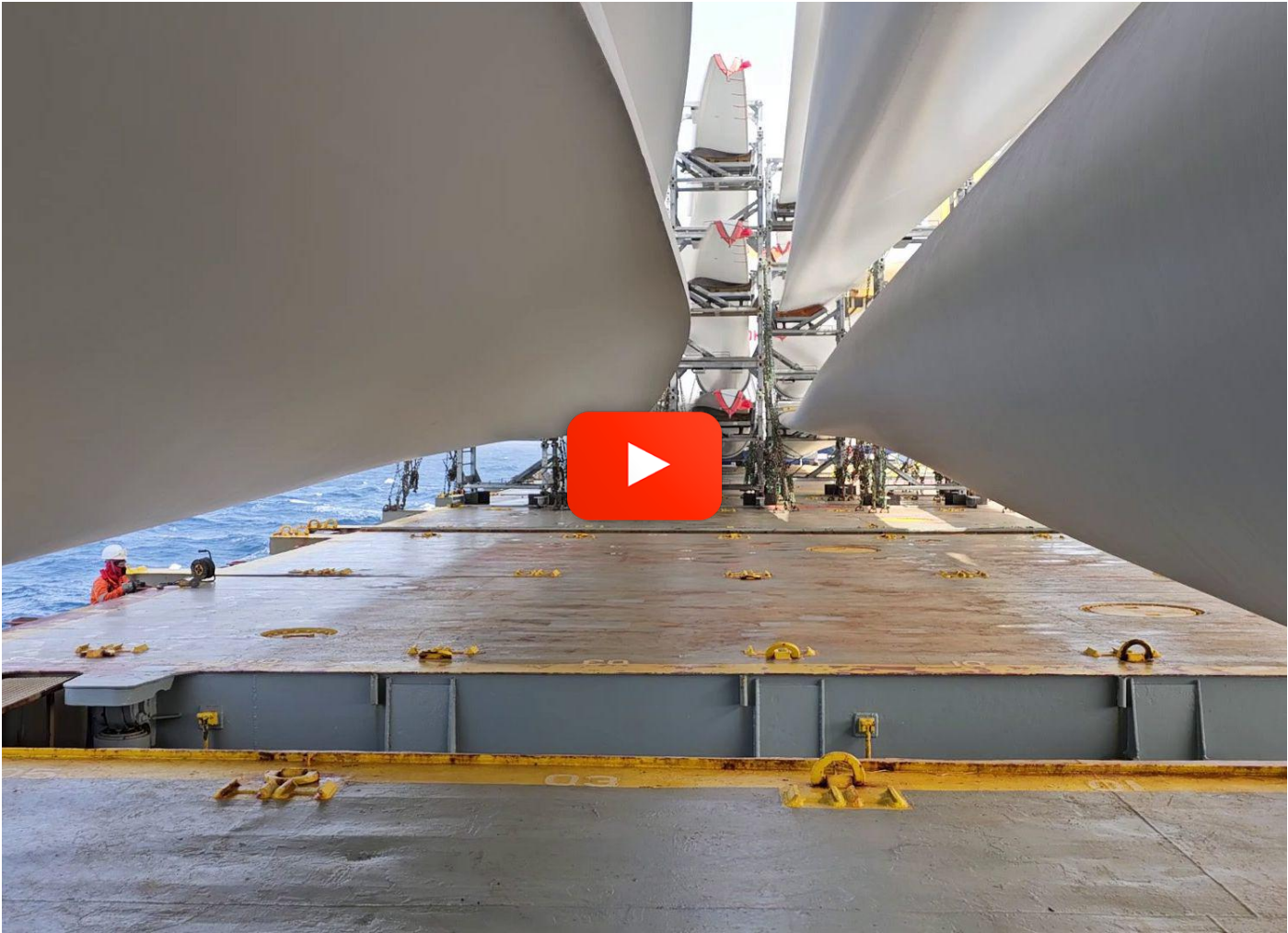












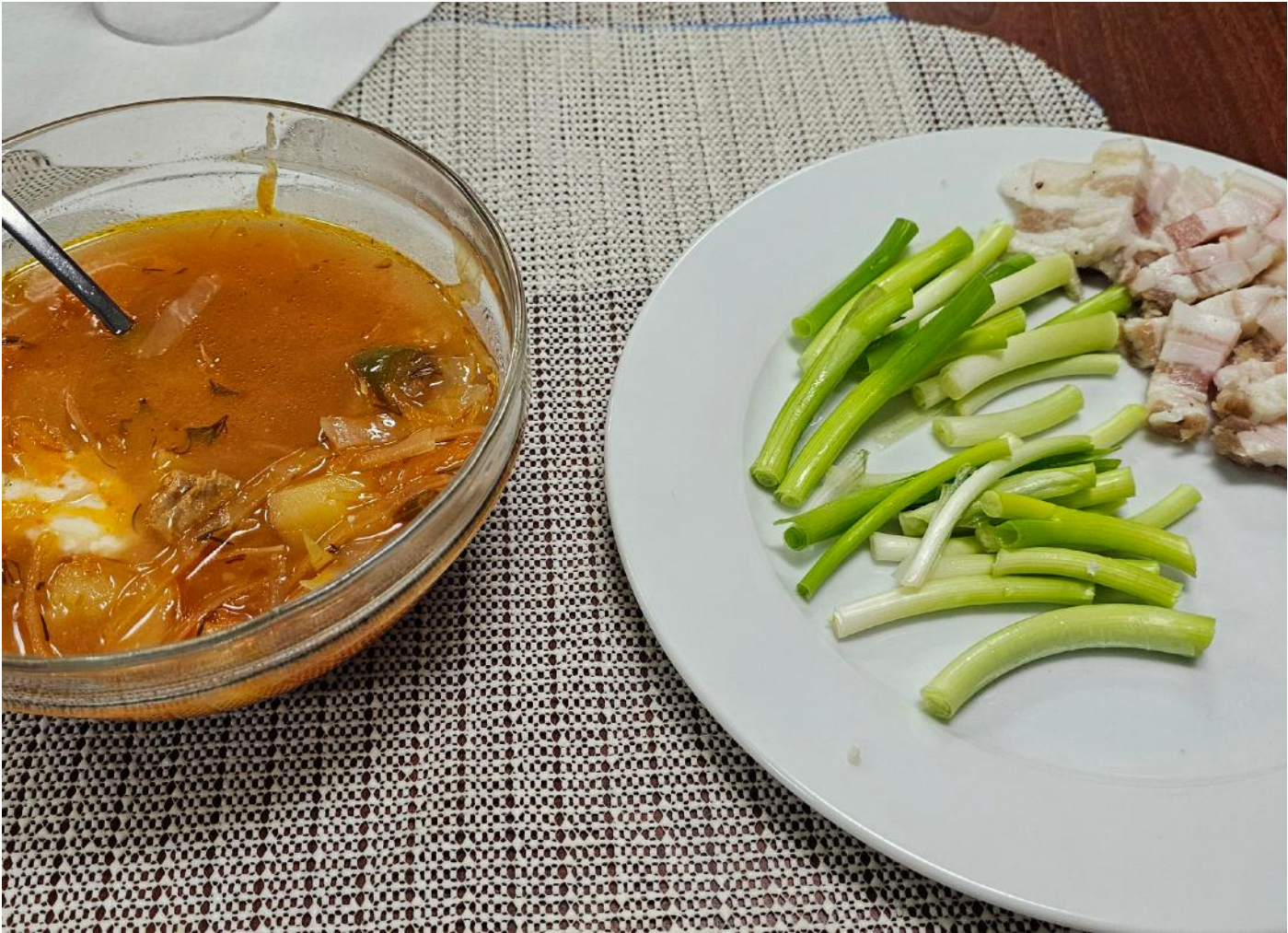






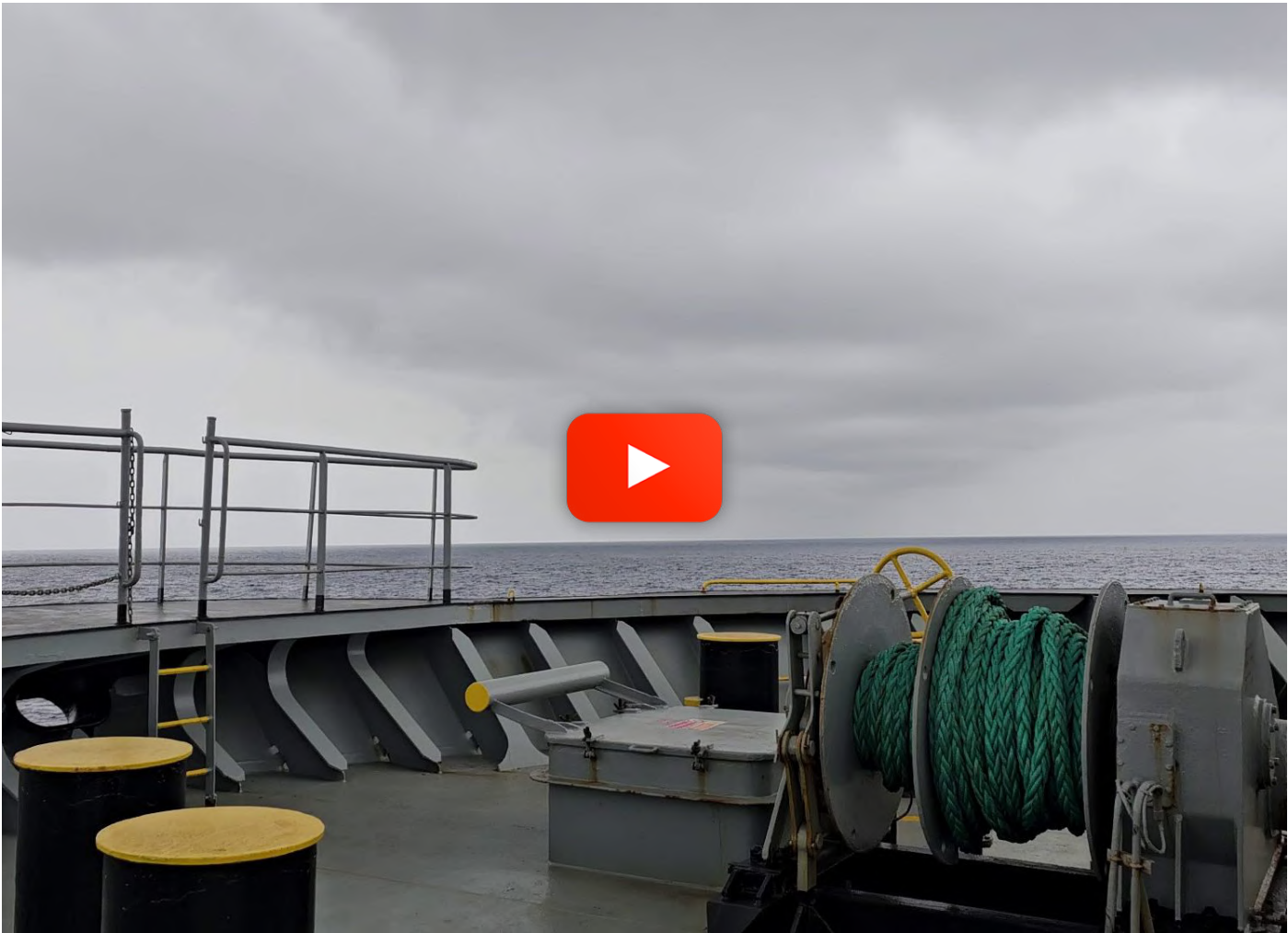


















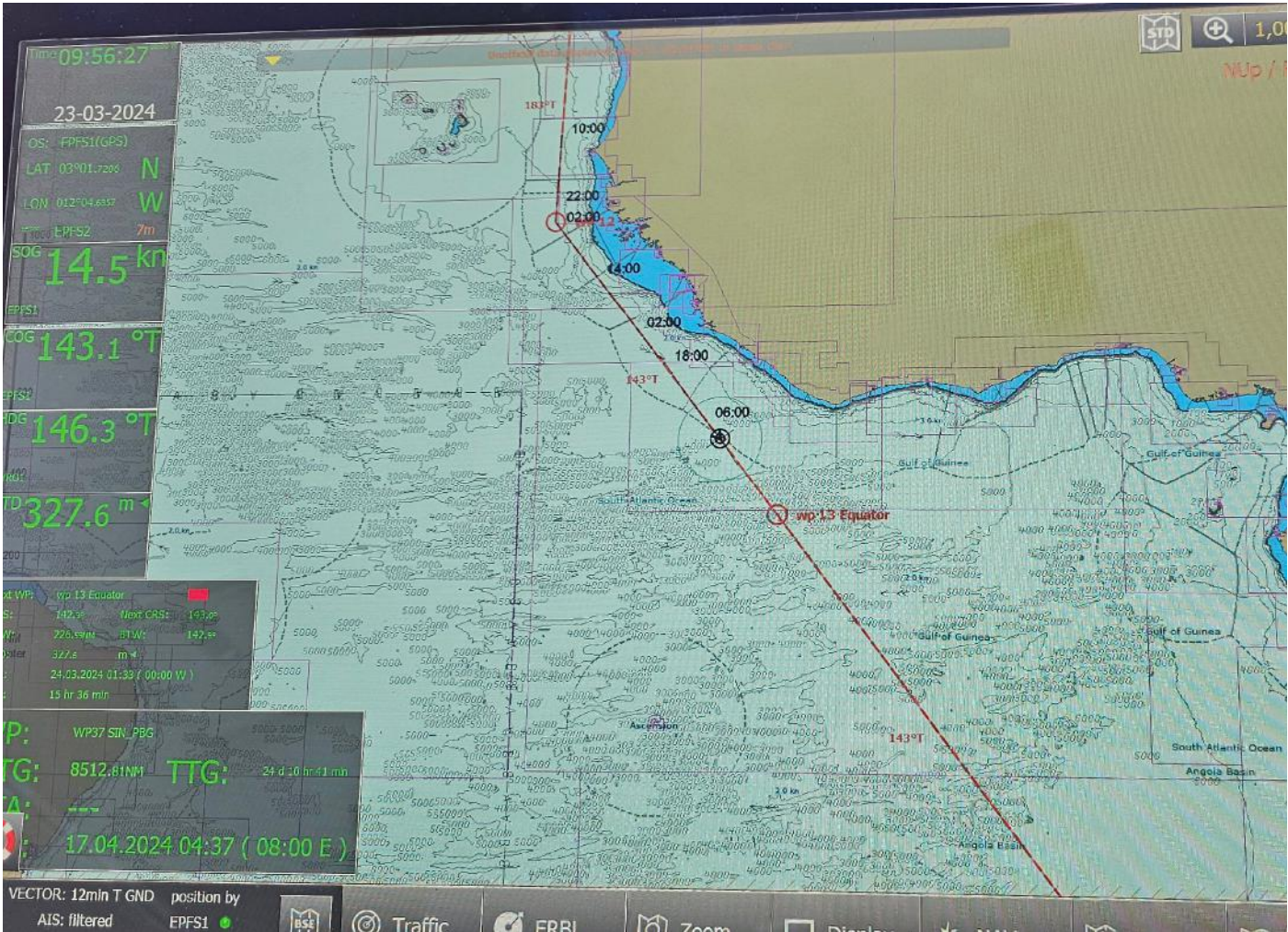










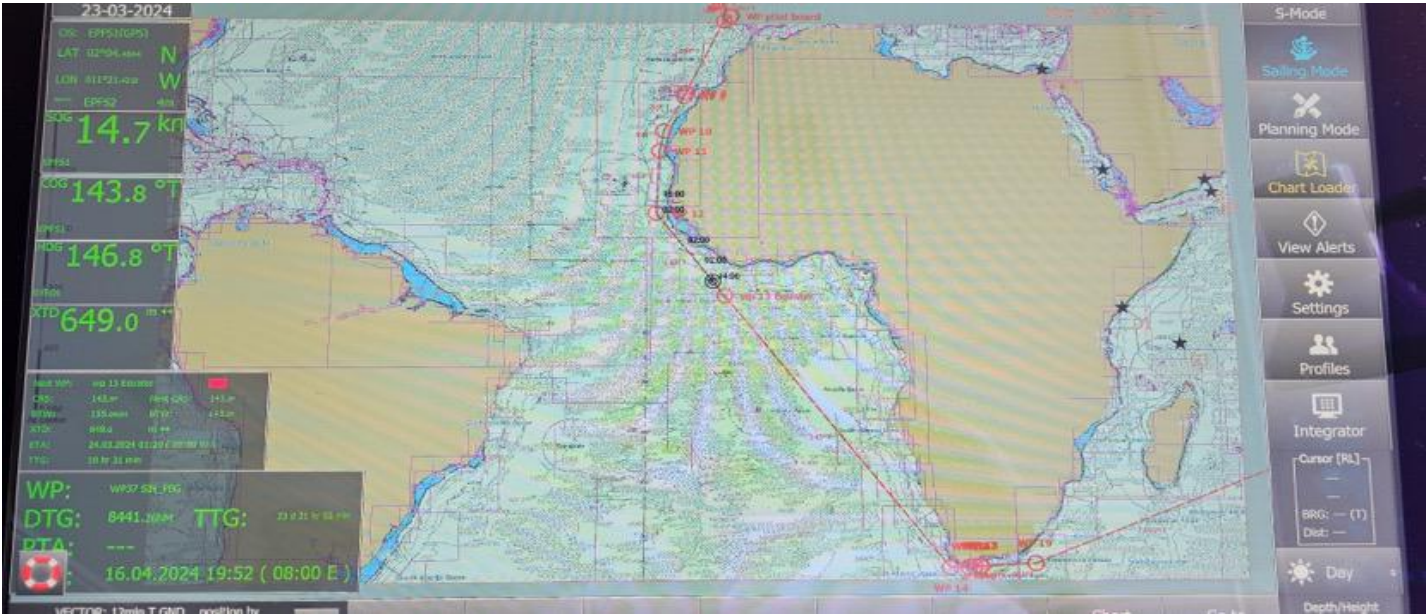
























VICTORIA MARINE

SHIP MANAGEMENT

SAFE AND RELIABLE SHIP OPERATIONS

**Container | Dry Bulk
Multi-Purpose | Tanker**

WWW.VICTORIA-MARINE.DE







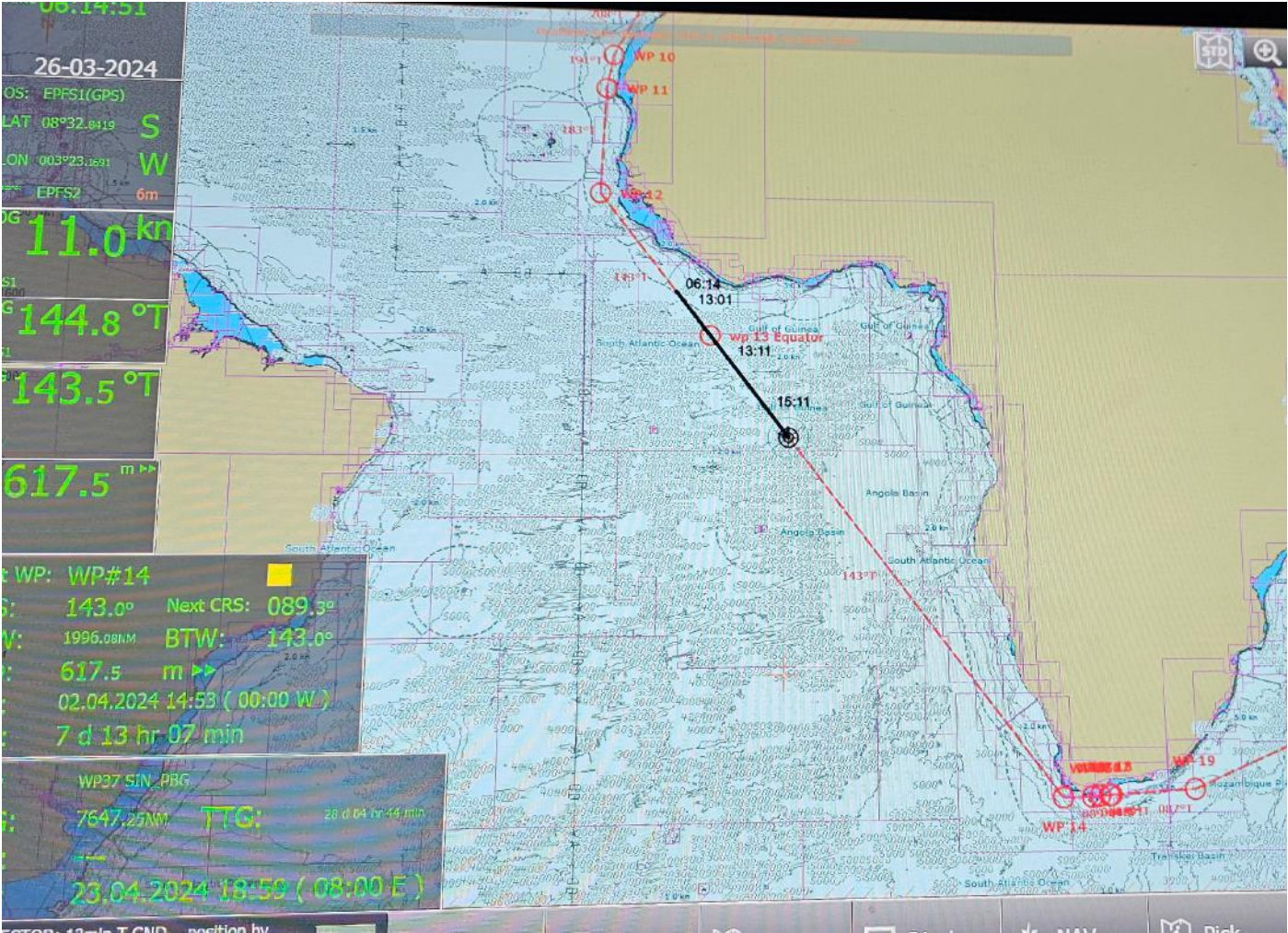
















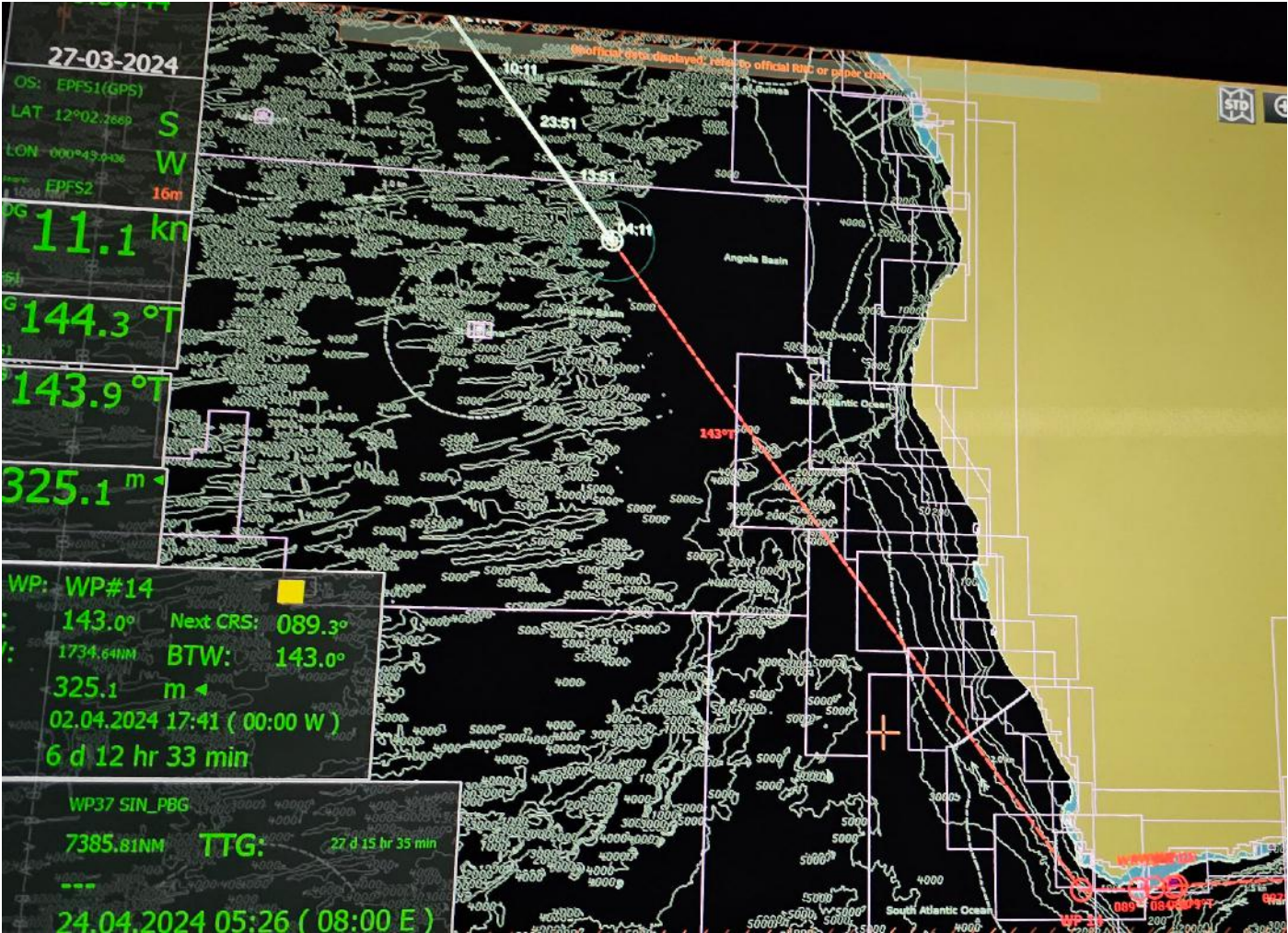




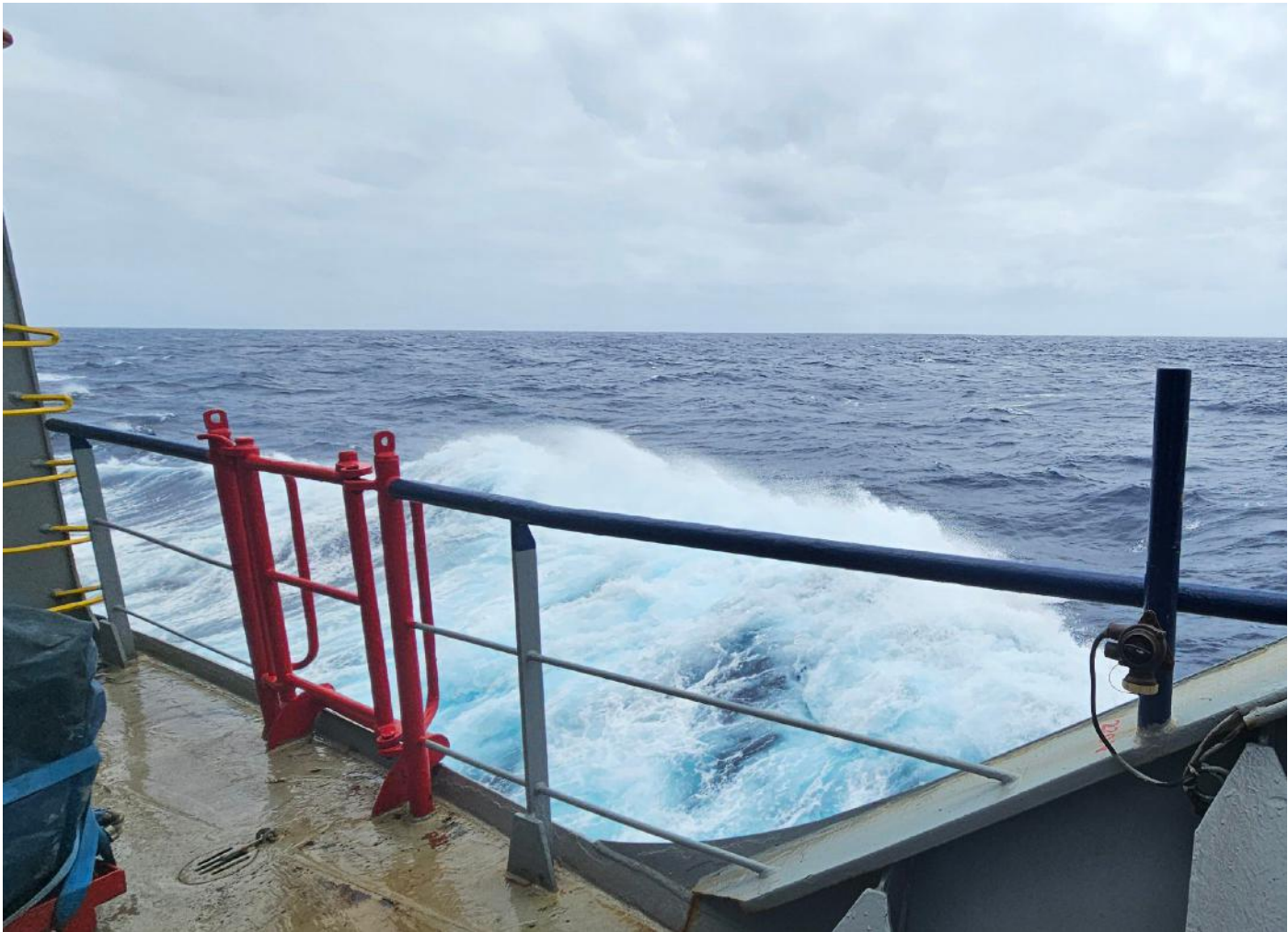






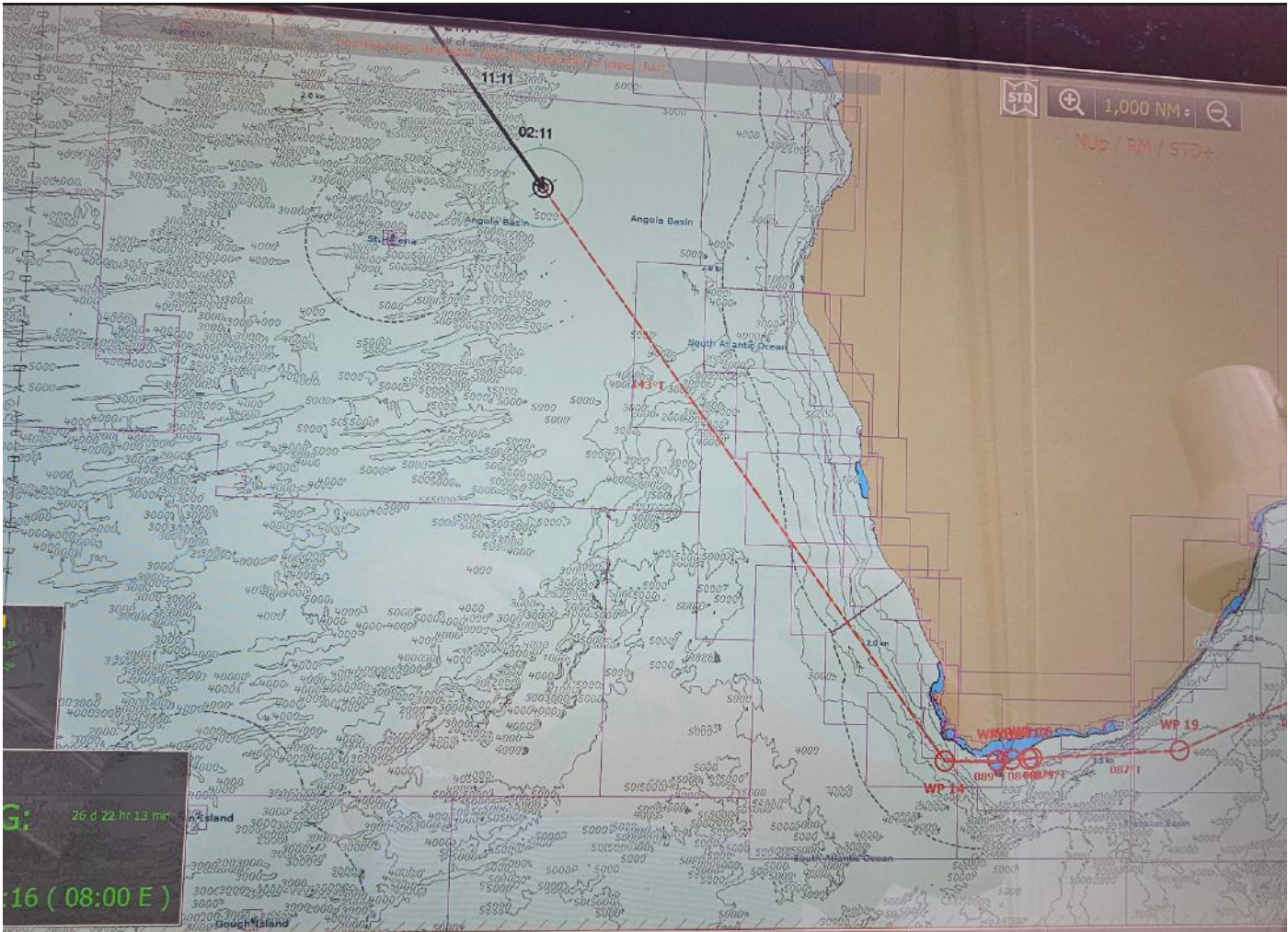






















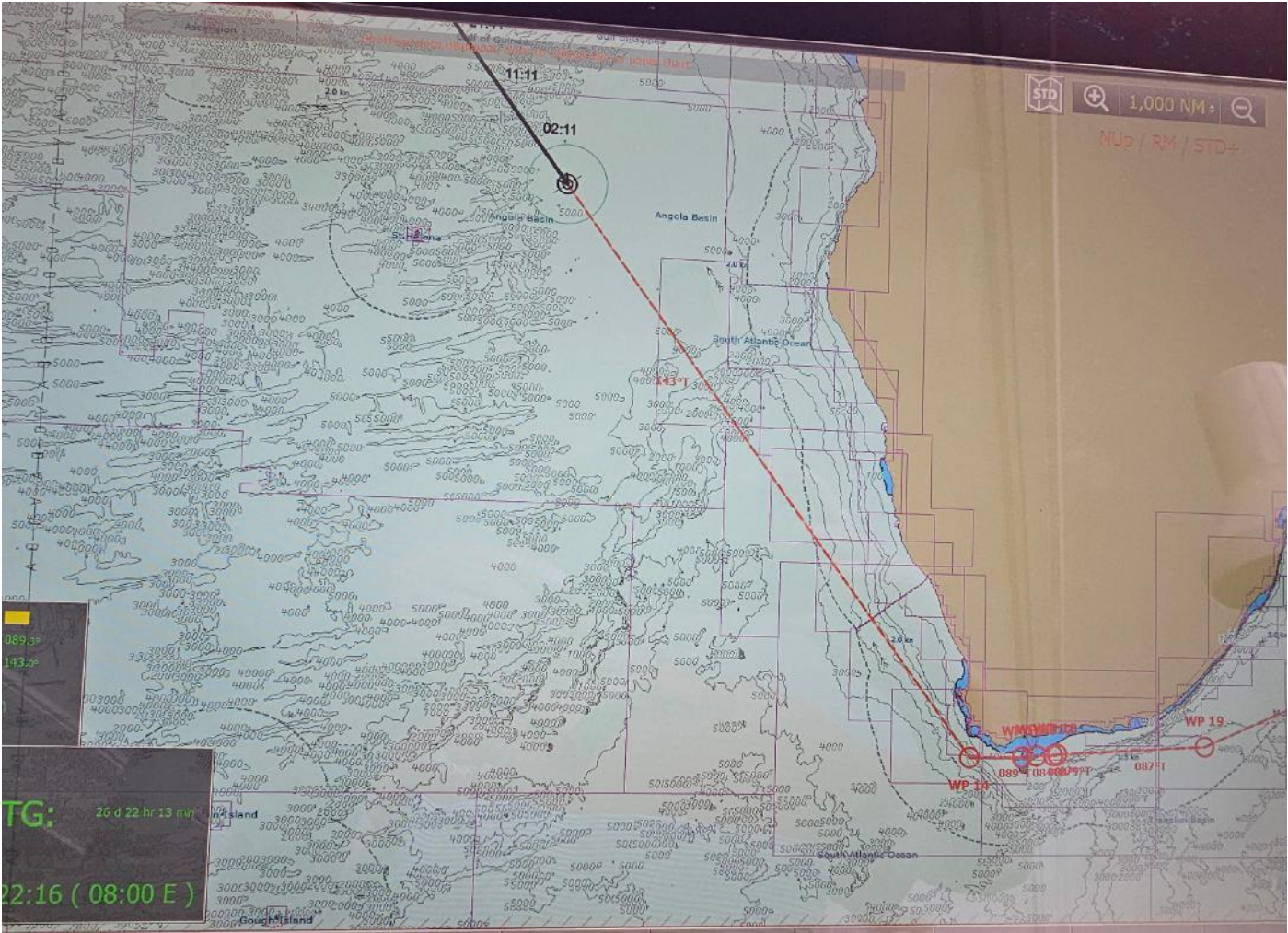
















YOUR SHIPPING PARTNER IN ASIA + EUROPE



Asia Break Bulk (Singapore) Pte. Ltd.

3 Phillip St #12 - 02

Singapore 048693, Singapore

Phone +65 689 626 14

E-Mail chartering@asiabreakbulk.com



www.asiabreakbulk.com

Asia Break Bulk (Singapore) Pte. Ltd.

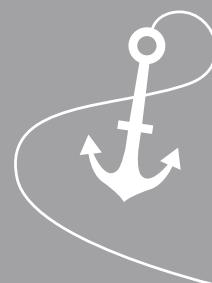
European Representative Office

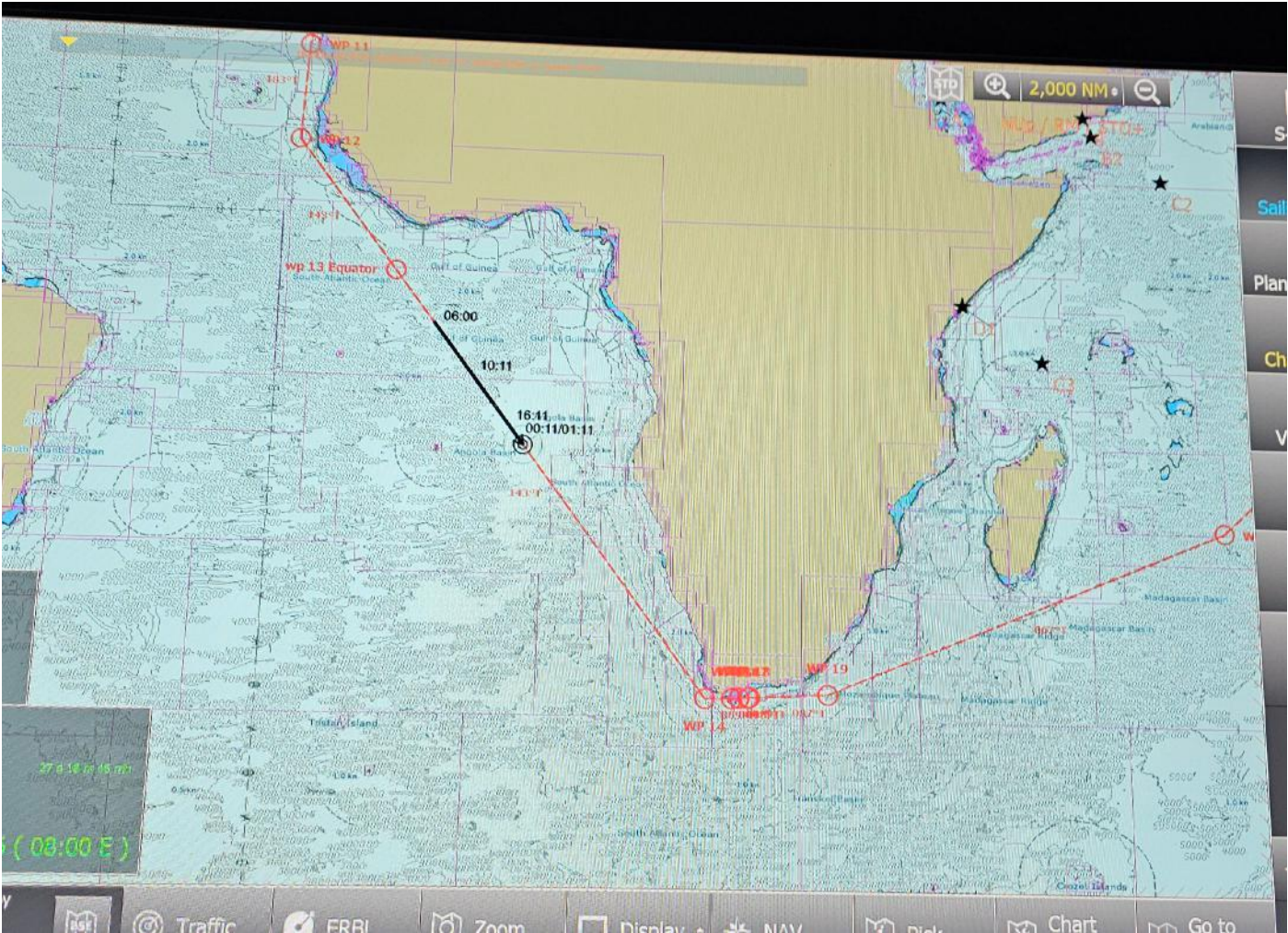
Großer Grasbrook 10

20457 Hamburg, Germany

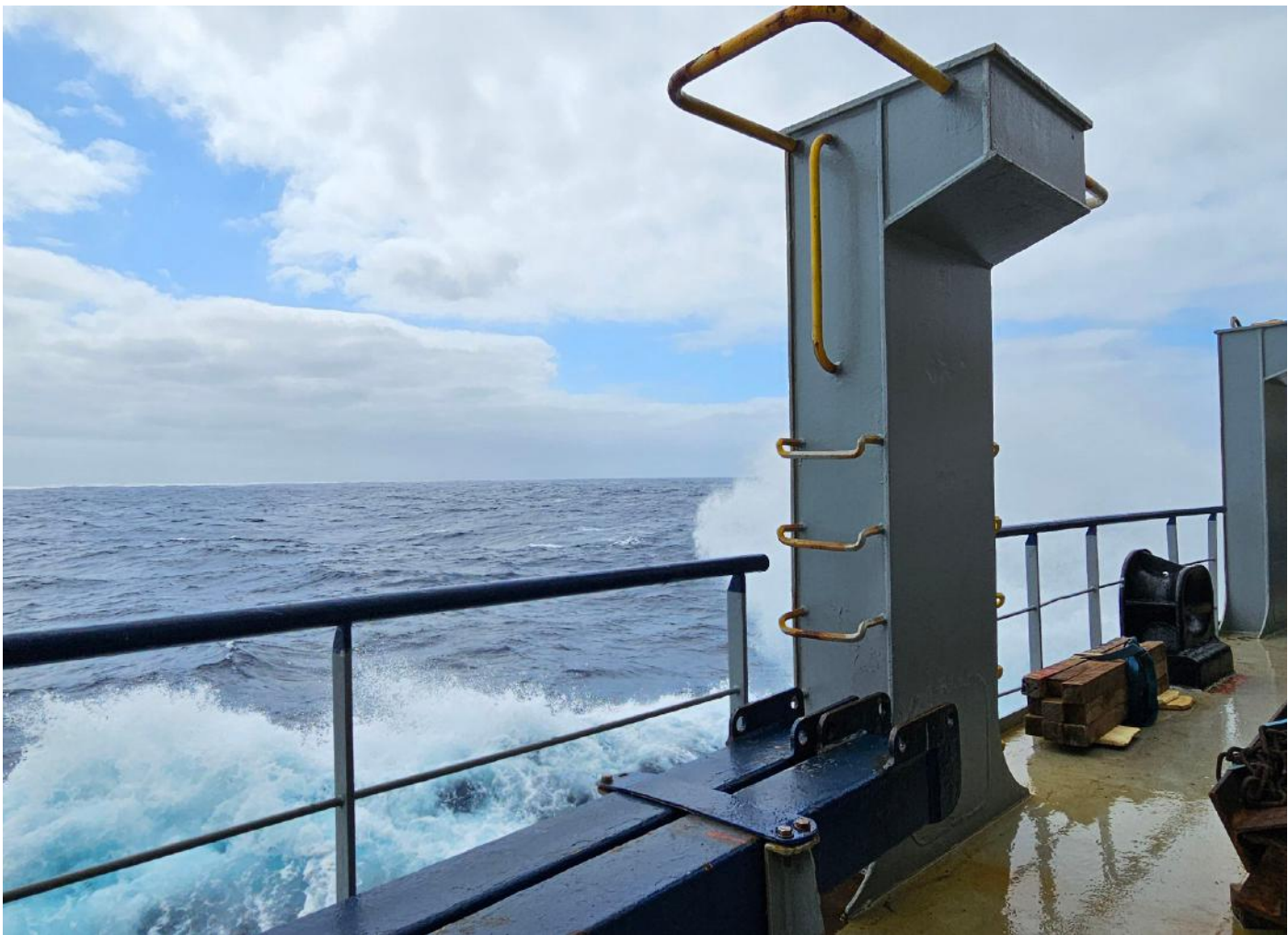
Phone + 49 40 320 25 791

E-Mail chartering@asiabreakbulk.com



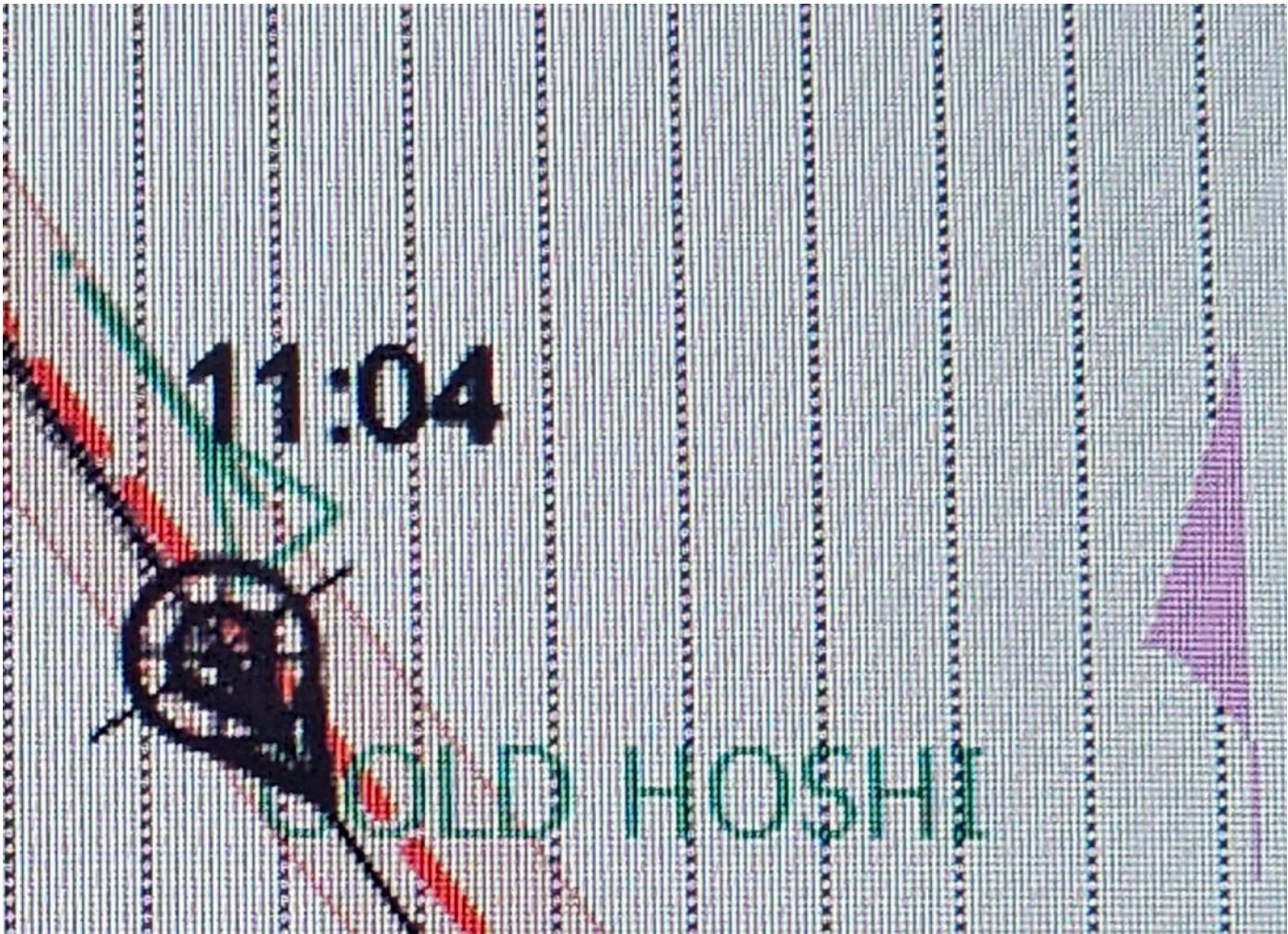






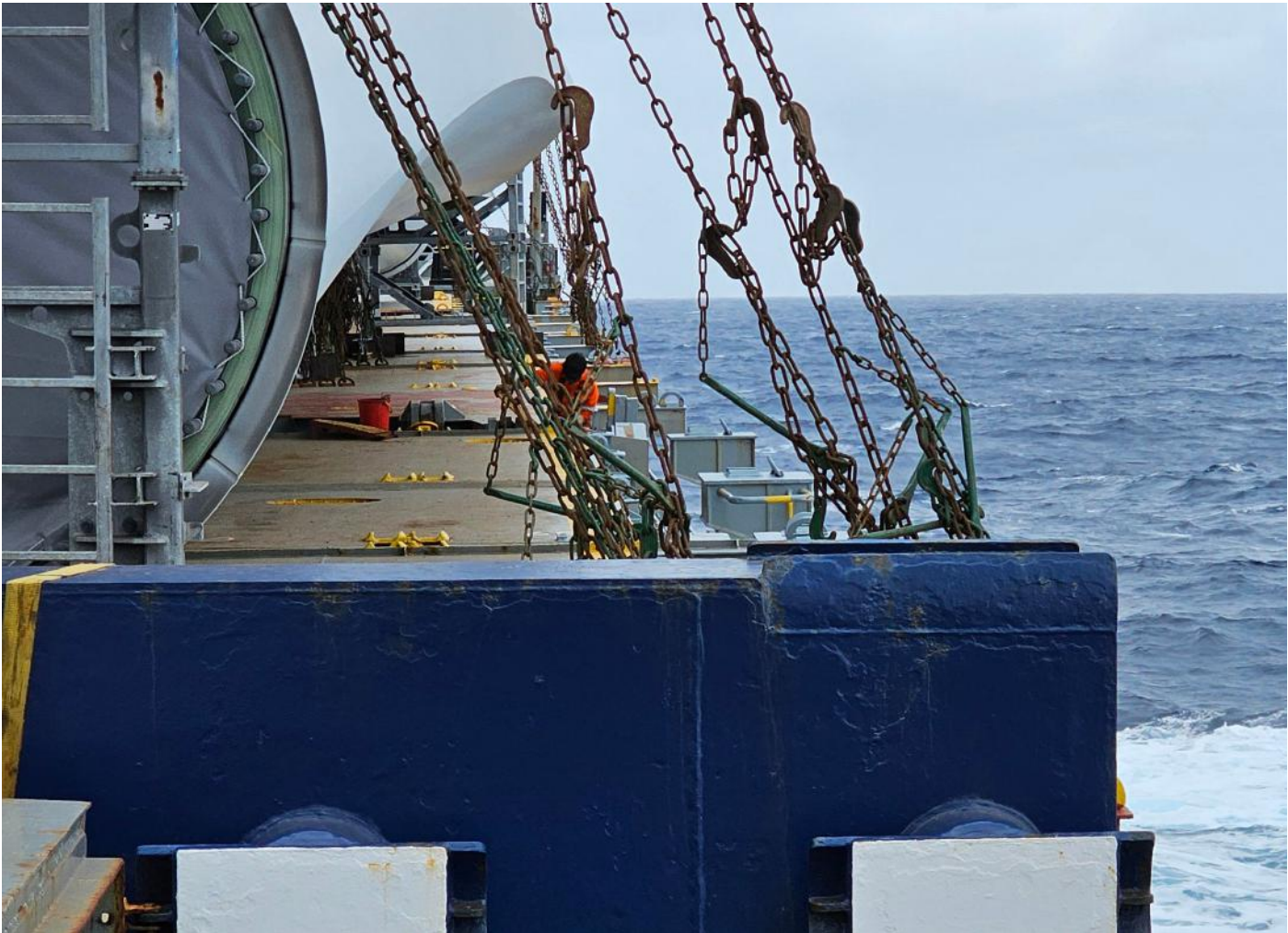


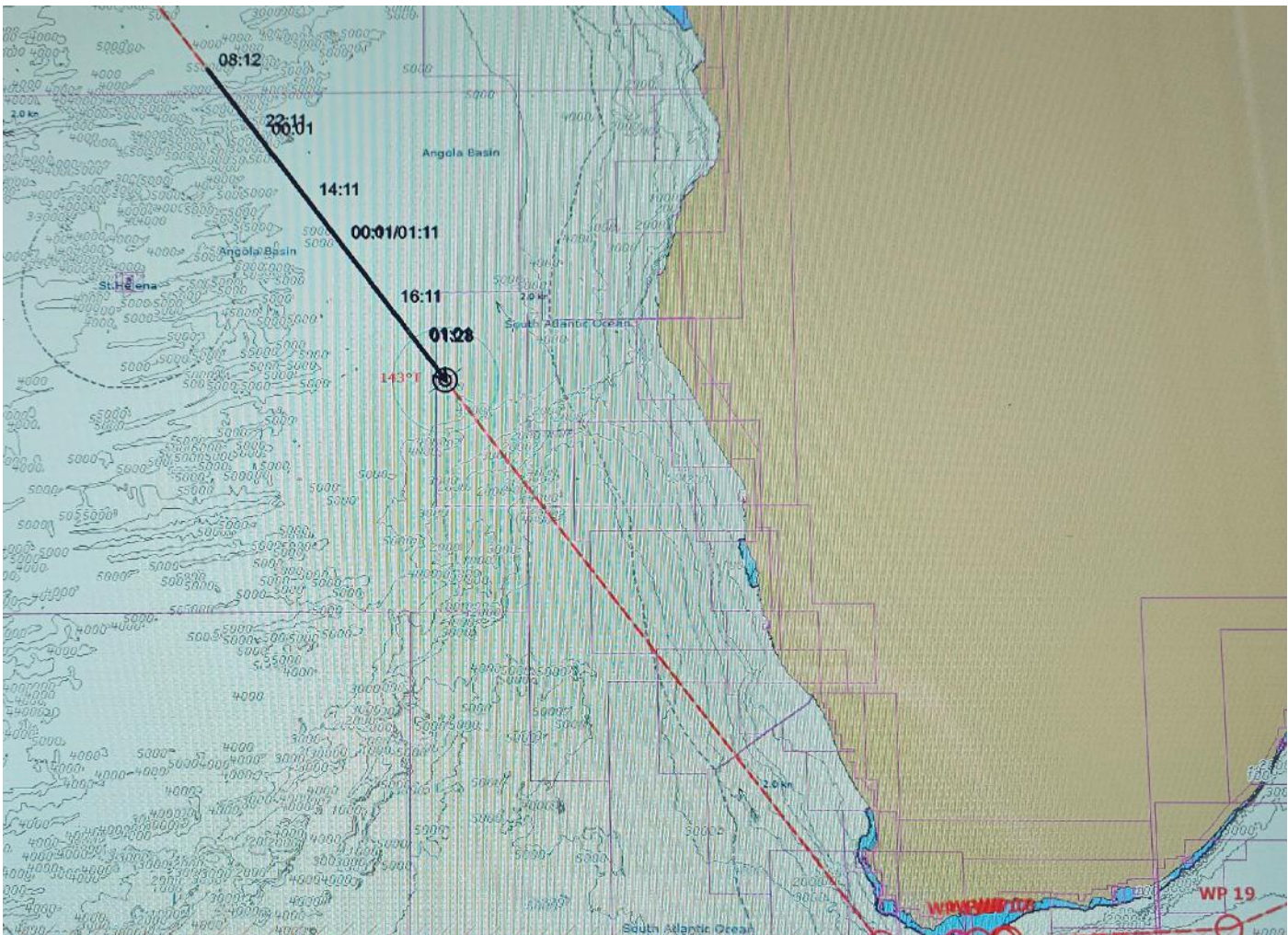
























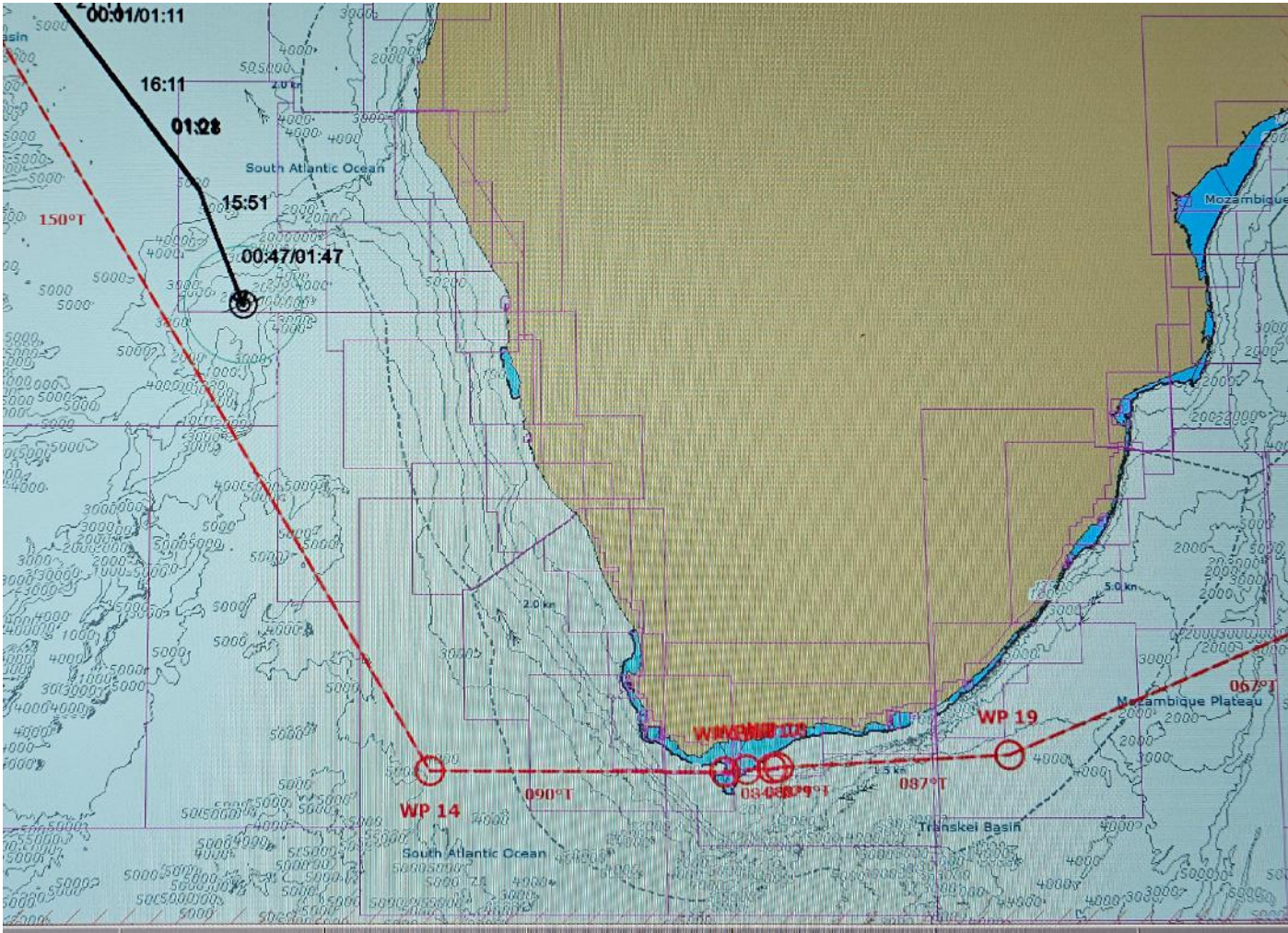
















































Man Overboard

Vital action on discovery of a man overboard

1 Immediate actions - Deck
 Throw nearest lifebuoy towards casualty
 Notify bridge/raise the alarm
 Summon assistance
 Keep casualty in sight
 Advise action party of situation



2 Immediate actions - Bridge
 Helm hard over to casualty side
 Stop main engine
 Sound man overboard alarm (three long blasts on ship's siren)
 Advise action party of situation
 Release bridge wing lifebuoy, check for light and/or smoke
 Inform galley to cease discharge of foodstuffs



3 Initial response - at sea
 Commence ship's turn
 Post extra look-outs with binoculars
 Ready and launch rescue boat when casualty visible
 Rig ladders and scramble nets
 Prepare first aid station, equip for rescue



4 Initial response - at anchor or in harbour
 If close to ship side, use lifebuoy and line, otherwise throw lifebuoy
 Muster rescue boat crew and establish communication with rescue boat
 Inform shore side Authorities
 Post extra look-outs
 Rig ladders and scramble nets
 Prepare first aid station, equip for resuscitation



Secondary response if casualty not located



Increase look-out



Advise nearest RCC and other ships in the area



Commence search pattern

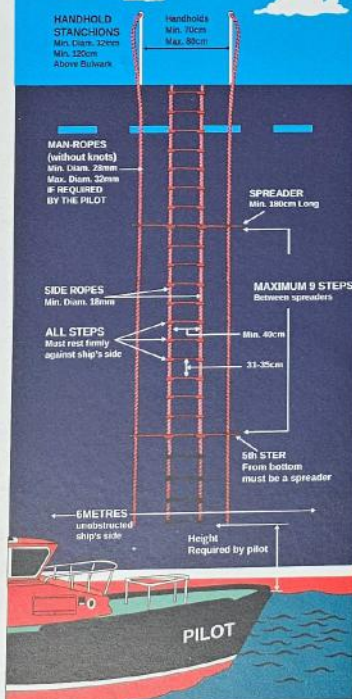


Maintain log, reporting situation as it develops

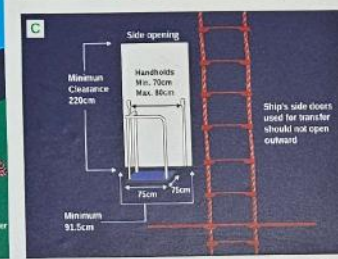
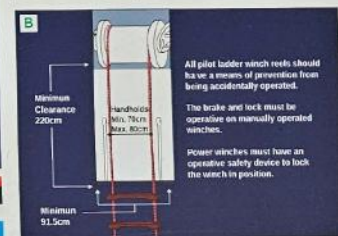
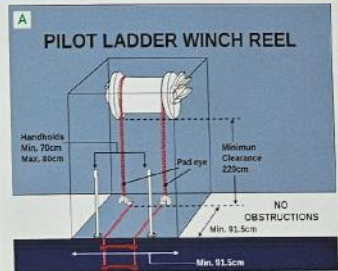
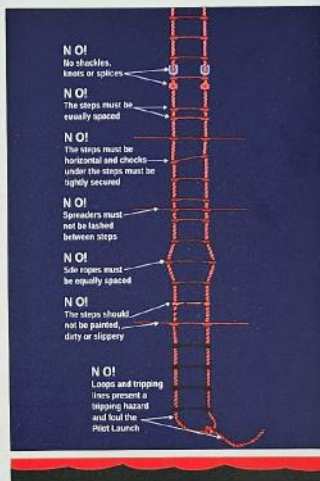
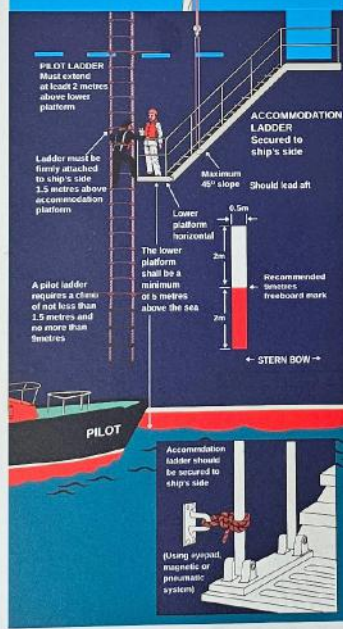
REQUIRED BOARDING ARRANGEMENTS FOR PILOT

In accordance with SOLAS Regulation V/23 IMO Resolution A. 1045 (27)

RIGGING FOR FREEBOARDS OF 9 METRES OR LESS



COMBINATION ARRANGEMENT FOR SHIPS WITH A FREEBOARD OF MORE THAN 9 METRES WHEN NO SIDE DOOR AVAILABLE





Vessel: MV Atlantic Harmony
Carrier: AAL Shipping
Loading wind energy converters
at Emden in January



Solutions beyond the ordinary

CPC Consolidated Pool Carriers (Asia) Co., Ltd.

7th Fl., Kibun Daiichi Bldg., 7-5-3 Tsukiji, Chuo-ku, Tokyo 104-0045 Japan

E-mail : cpc@cpc-asia.co.jp

www.coli-shipping.com

CPC
Consolidated Project Carriers





















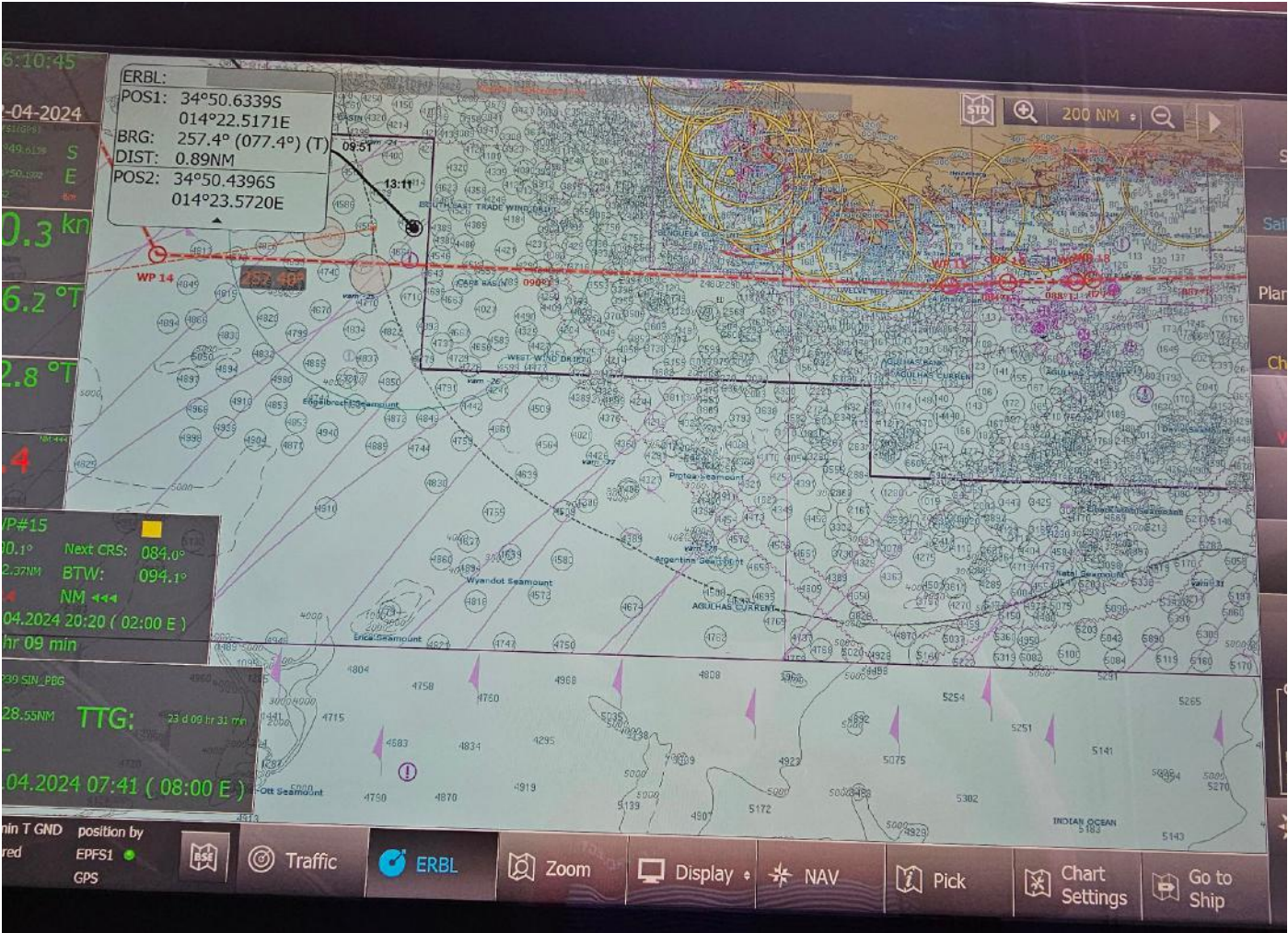


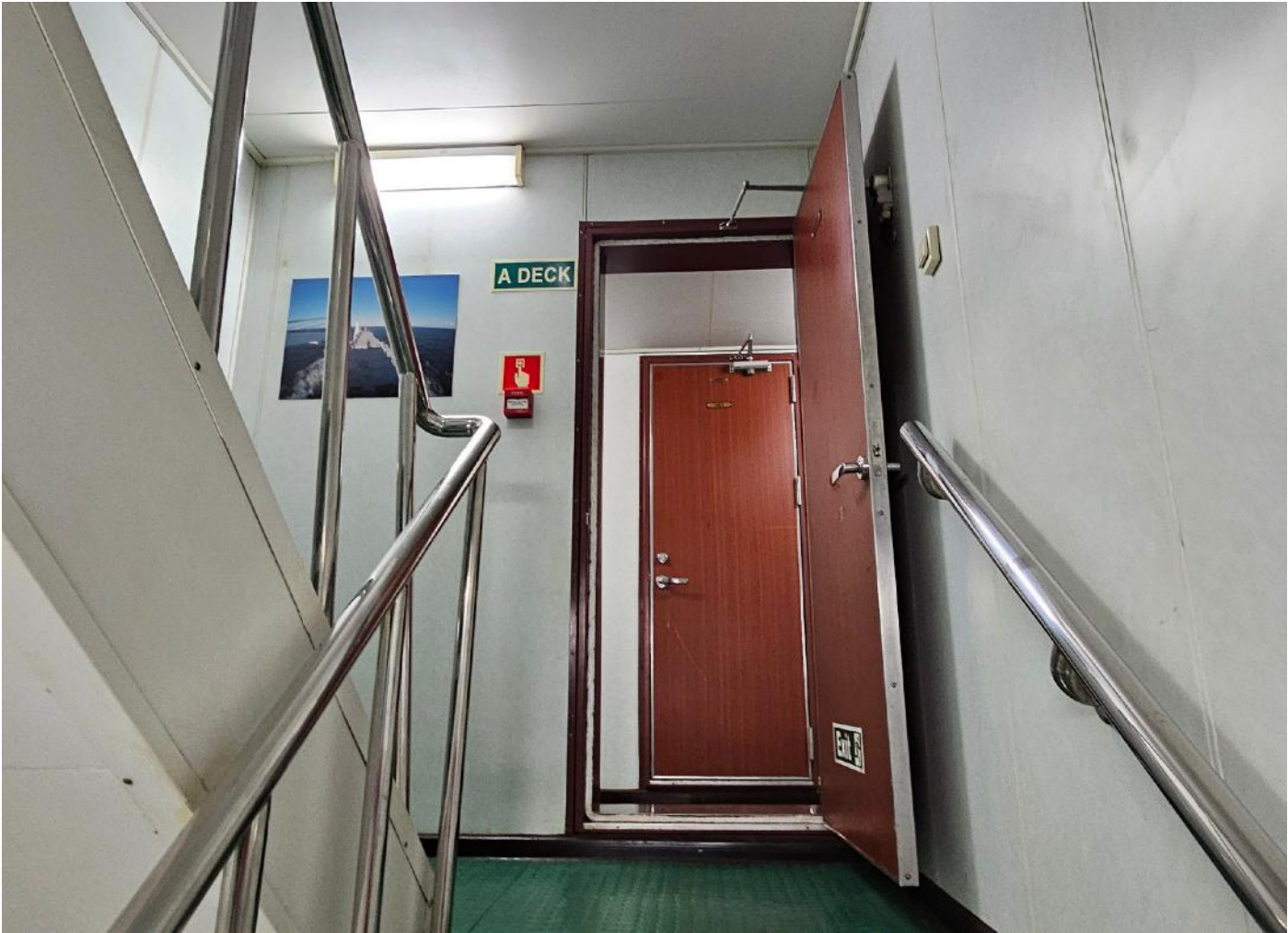












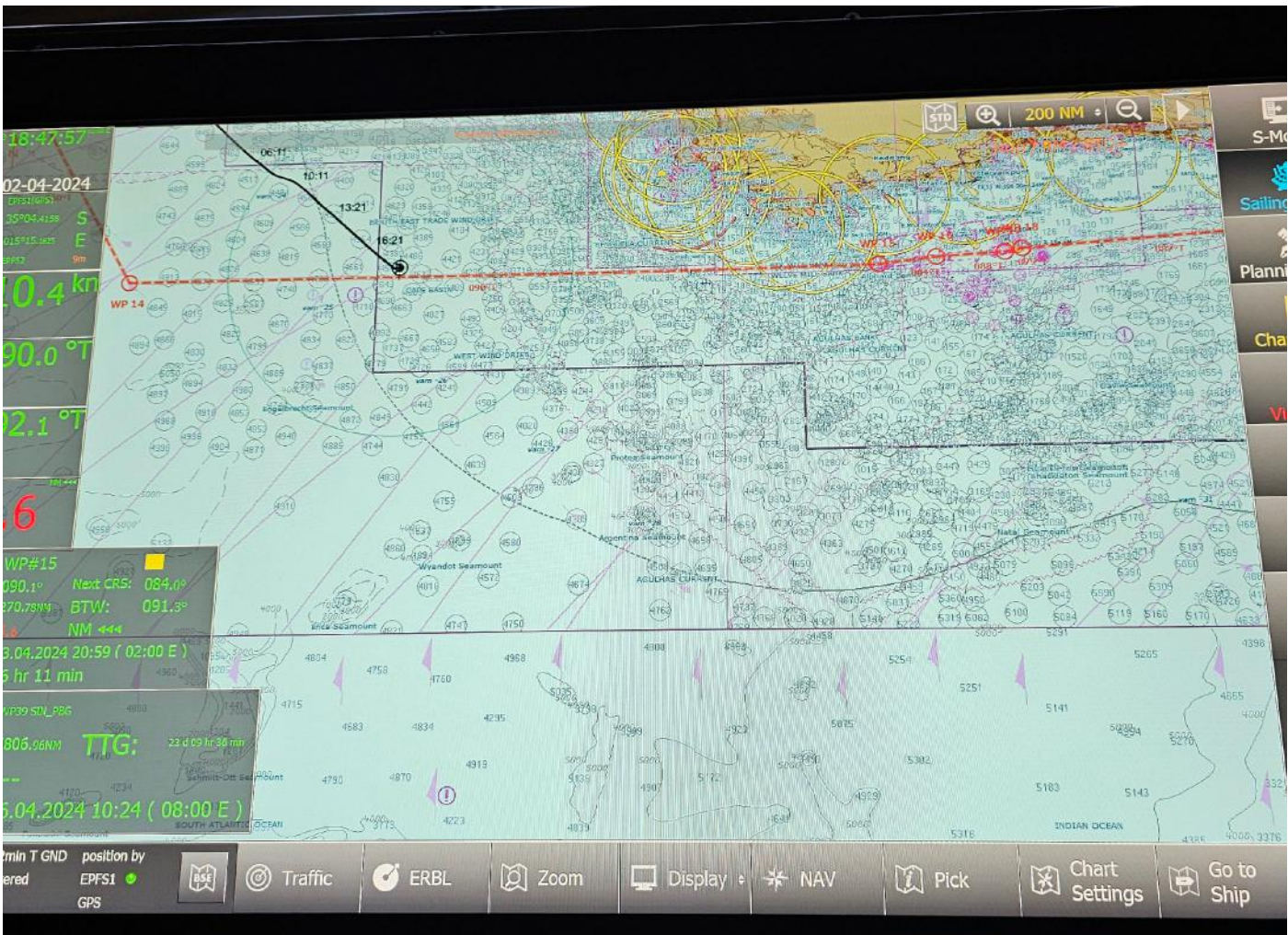
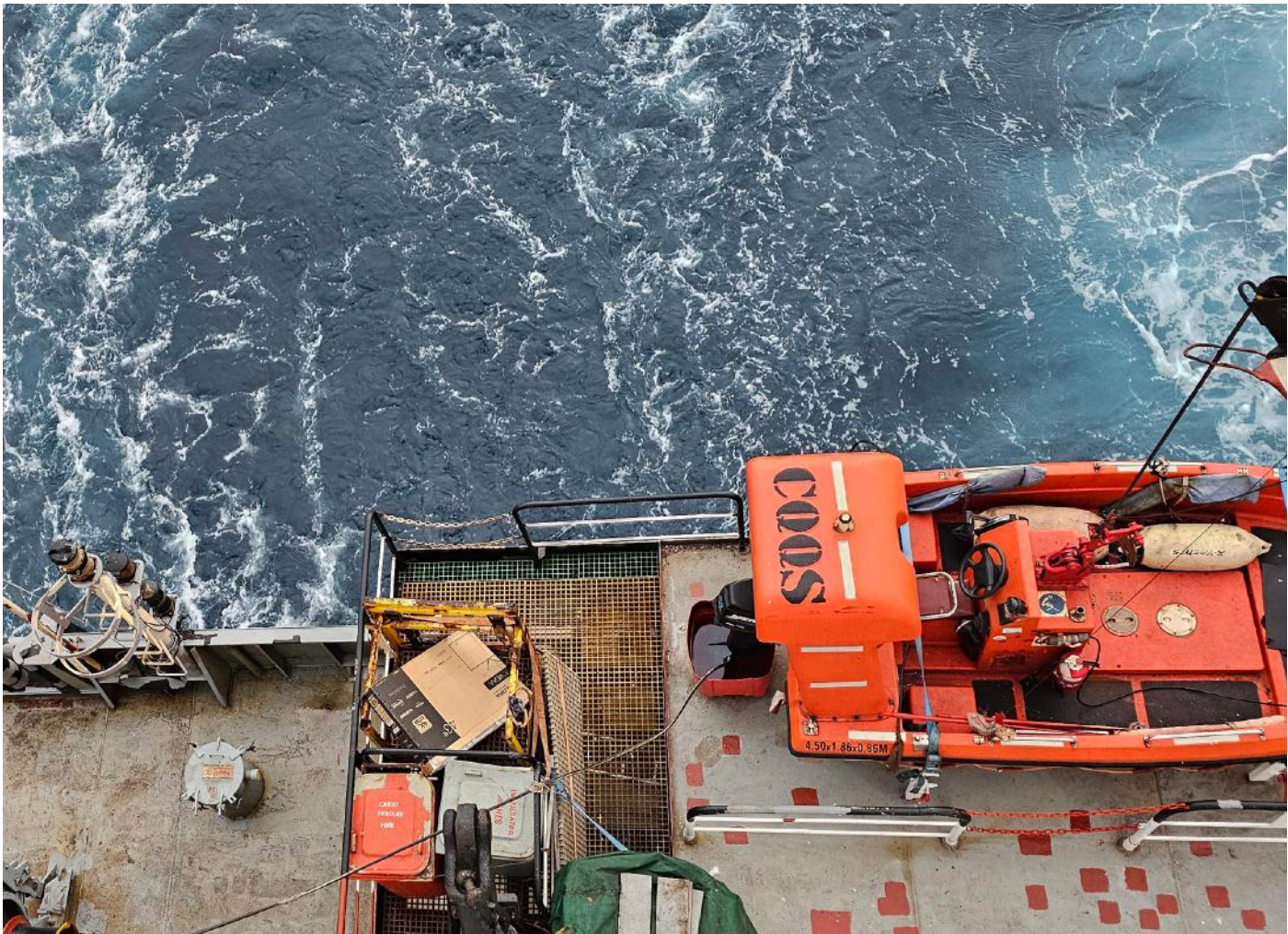














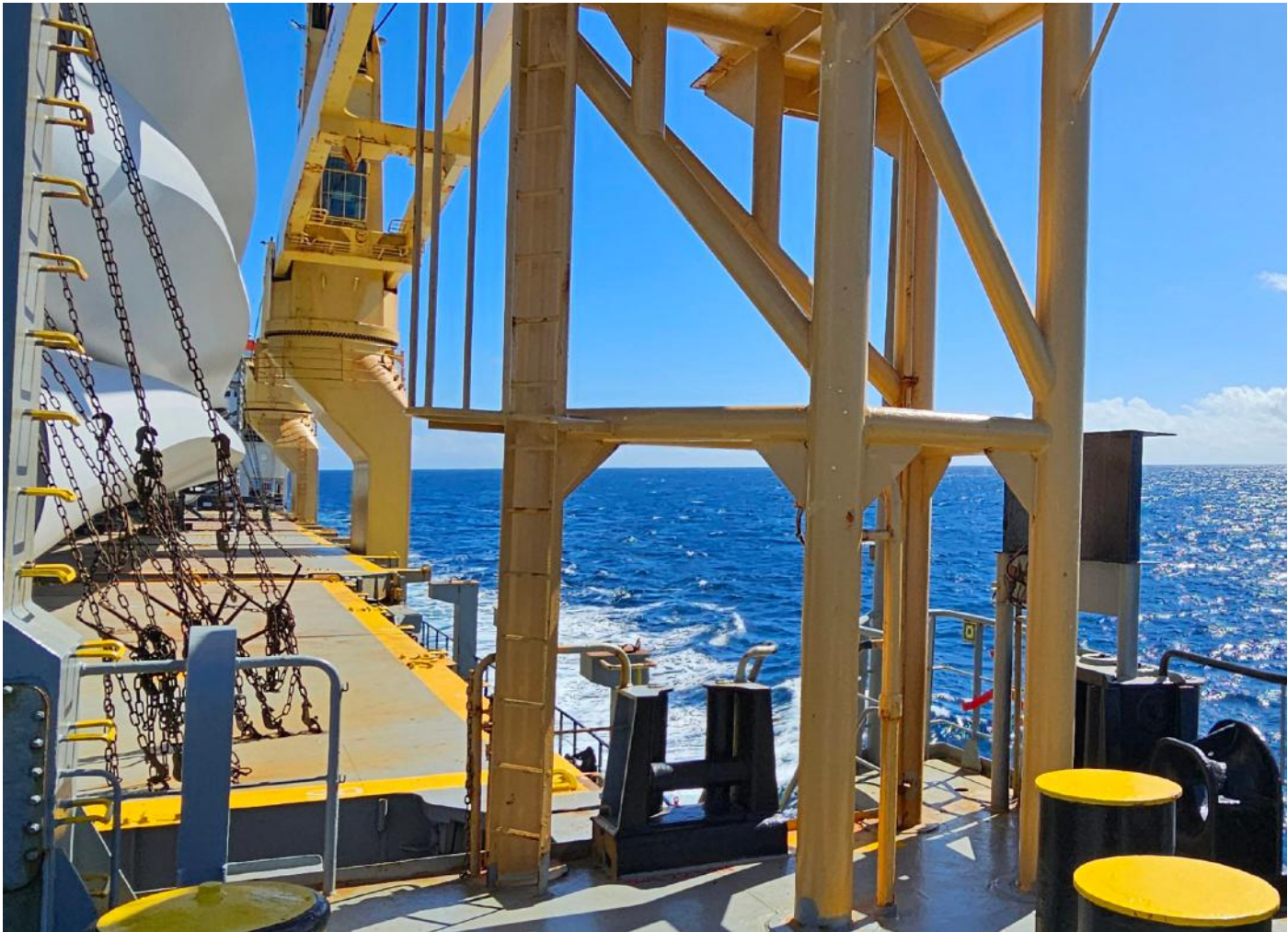






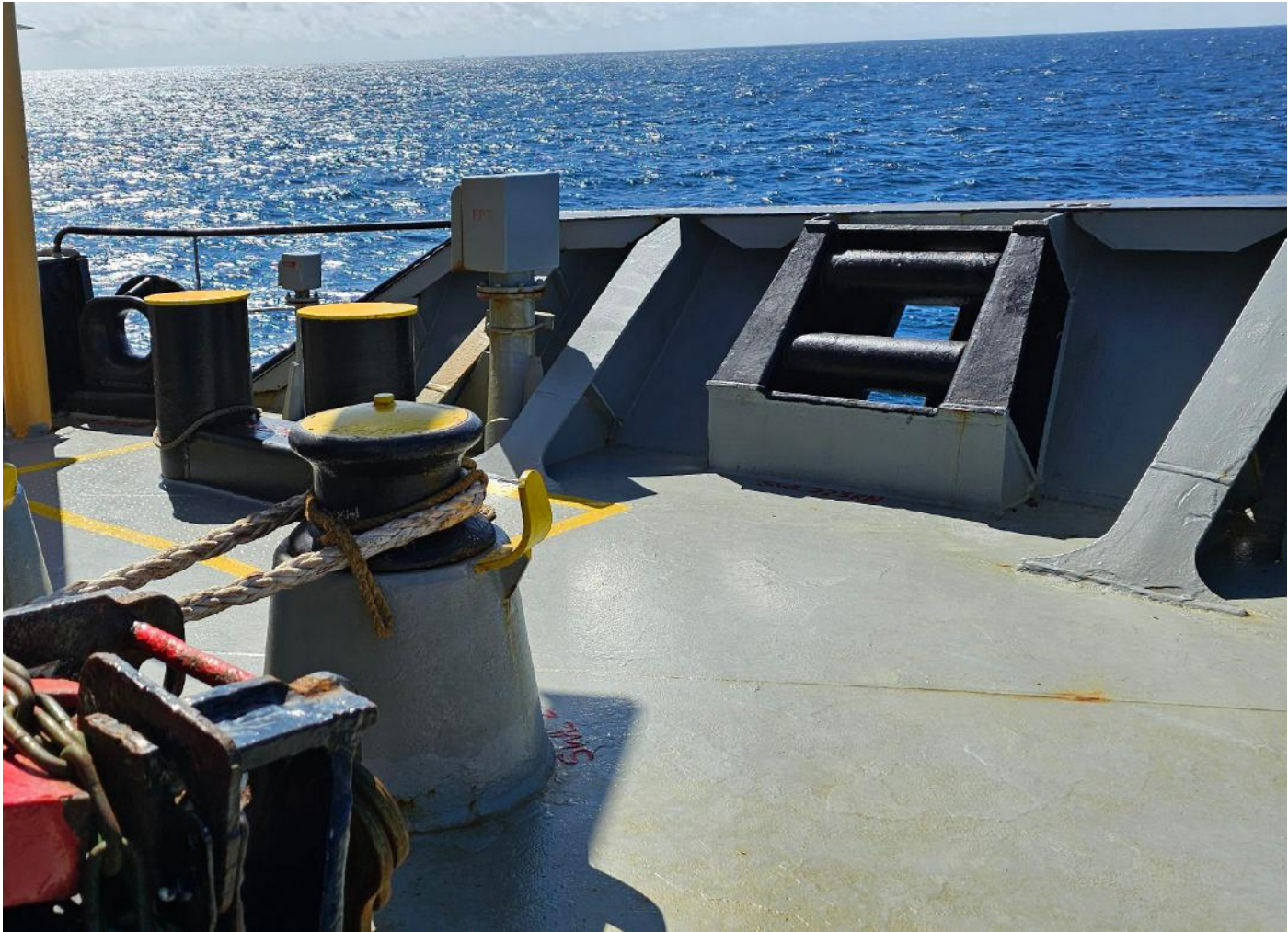


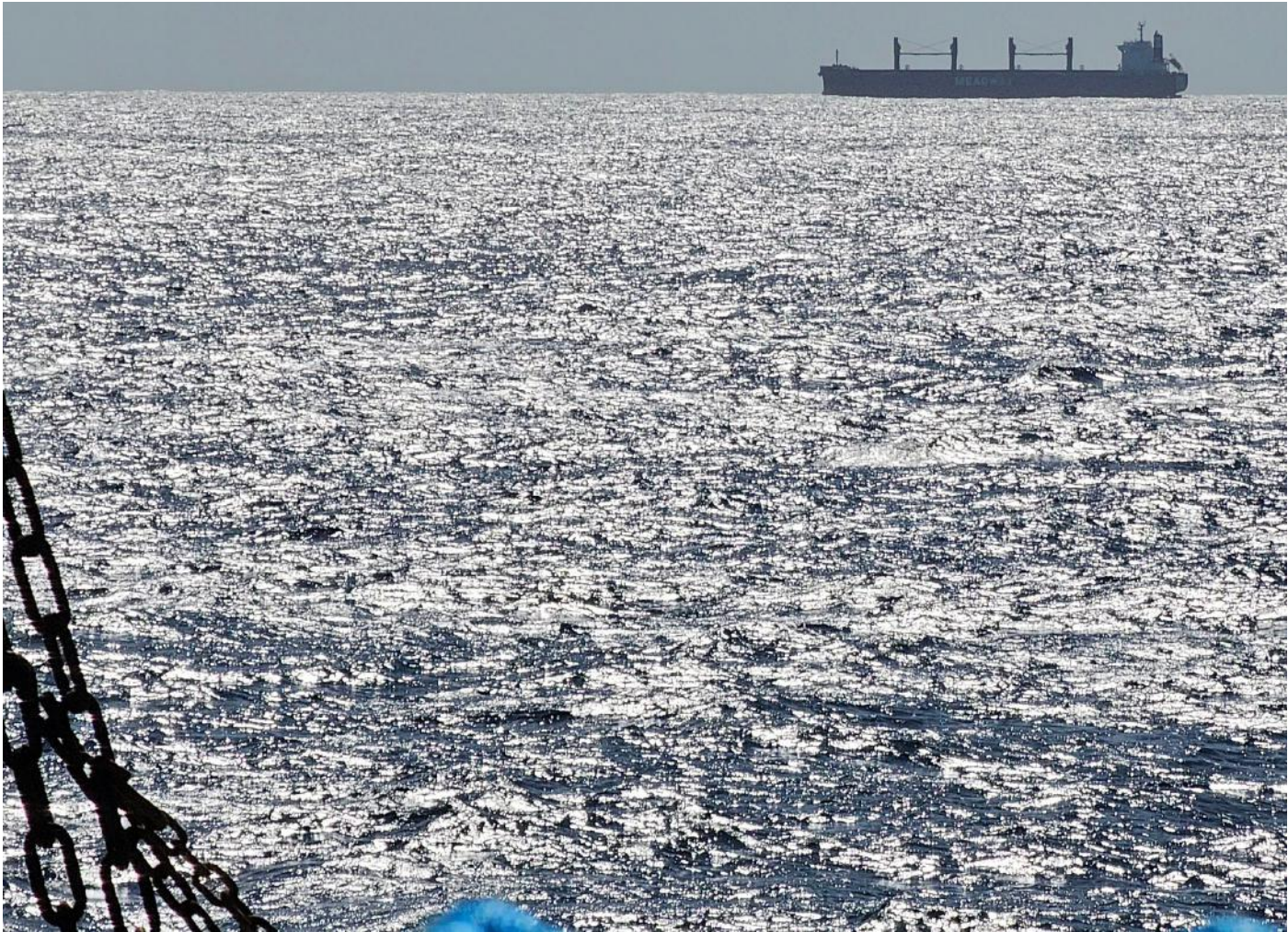


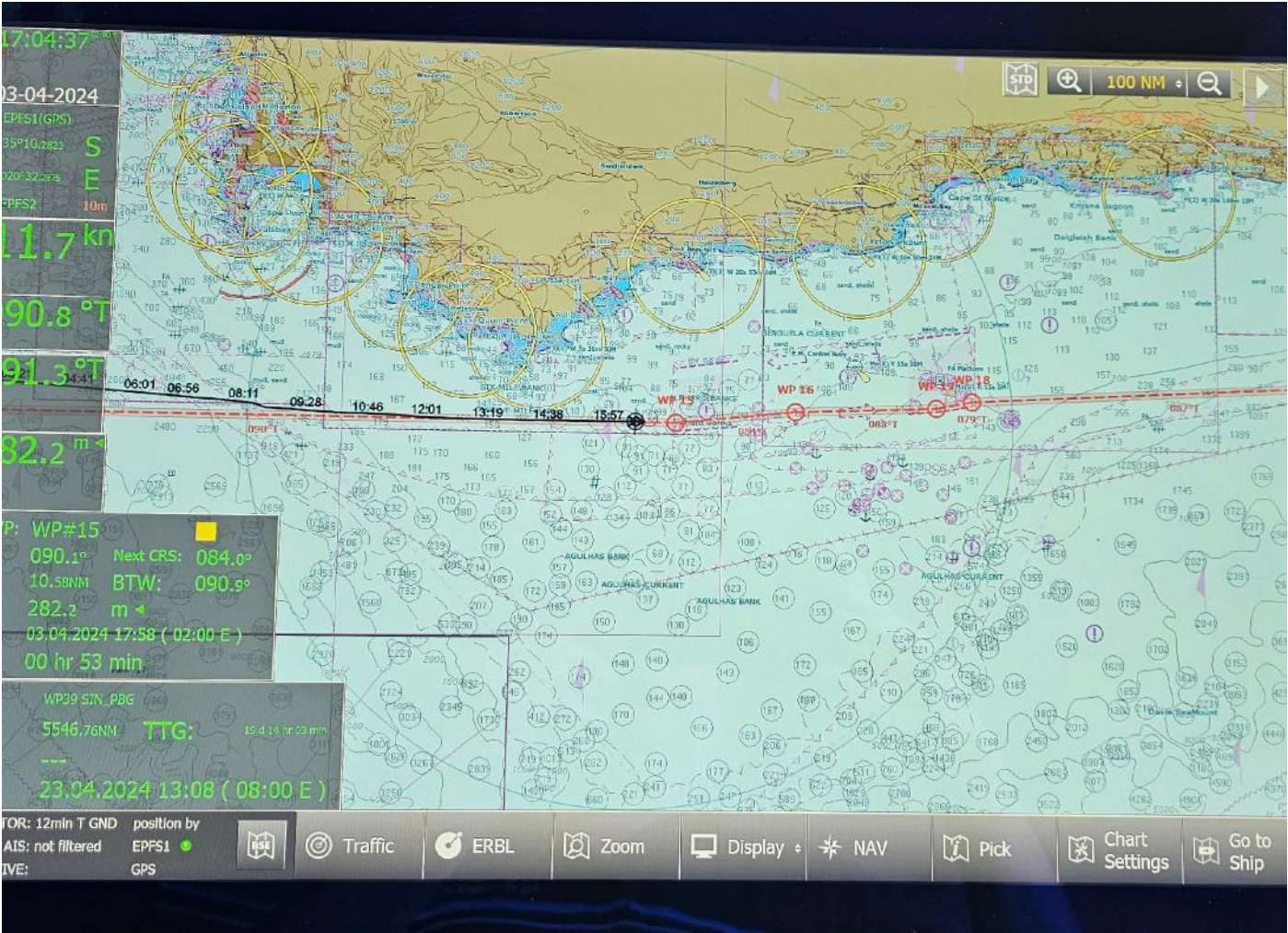






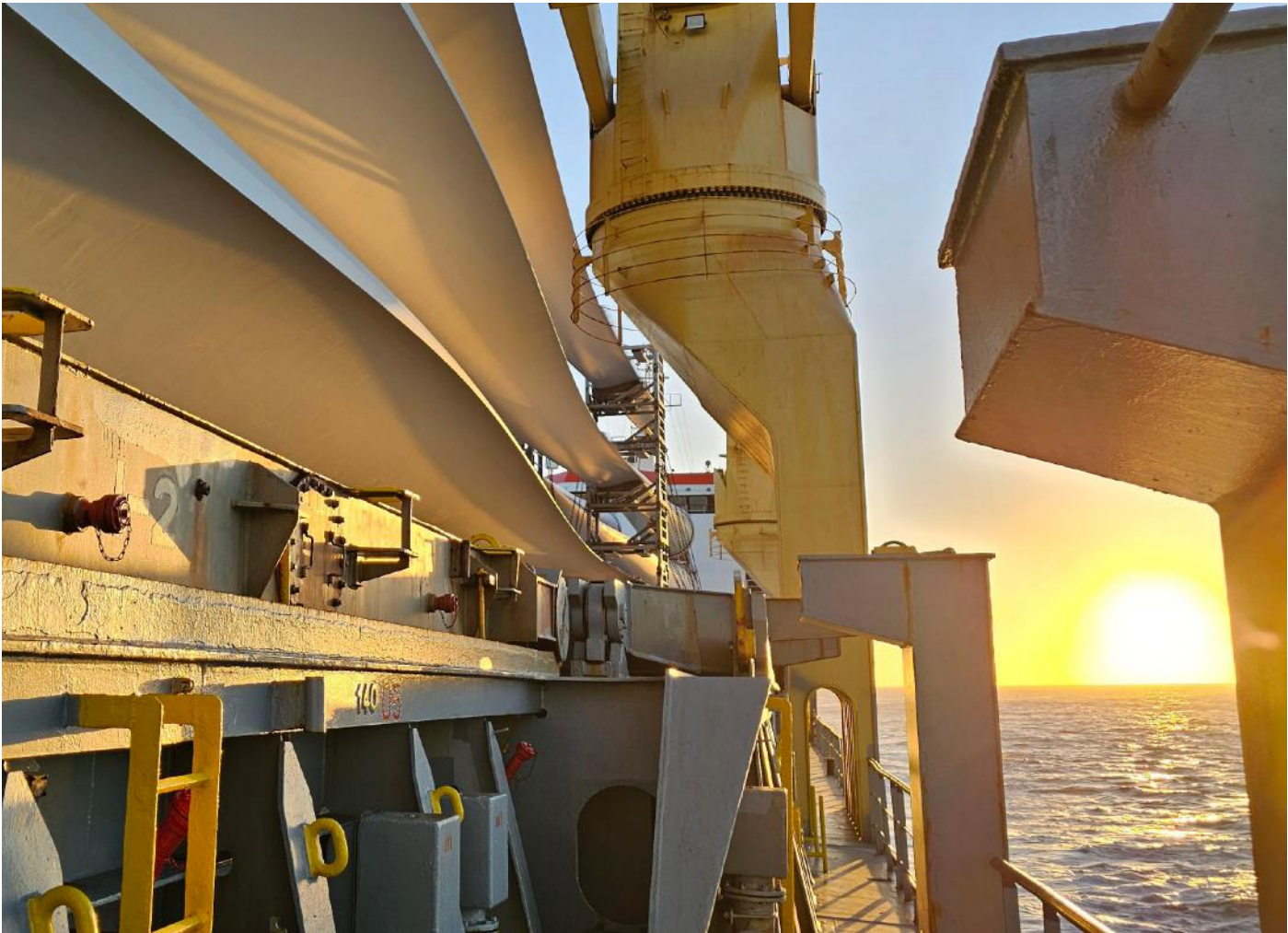


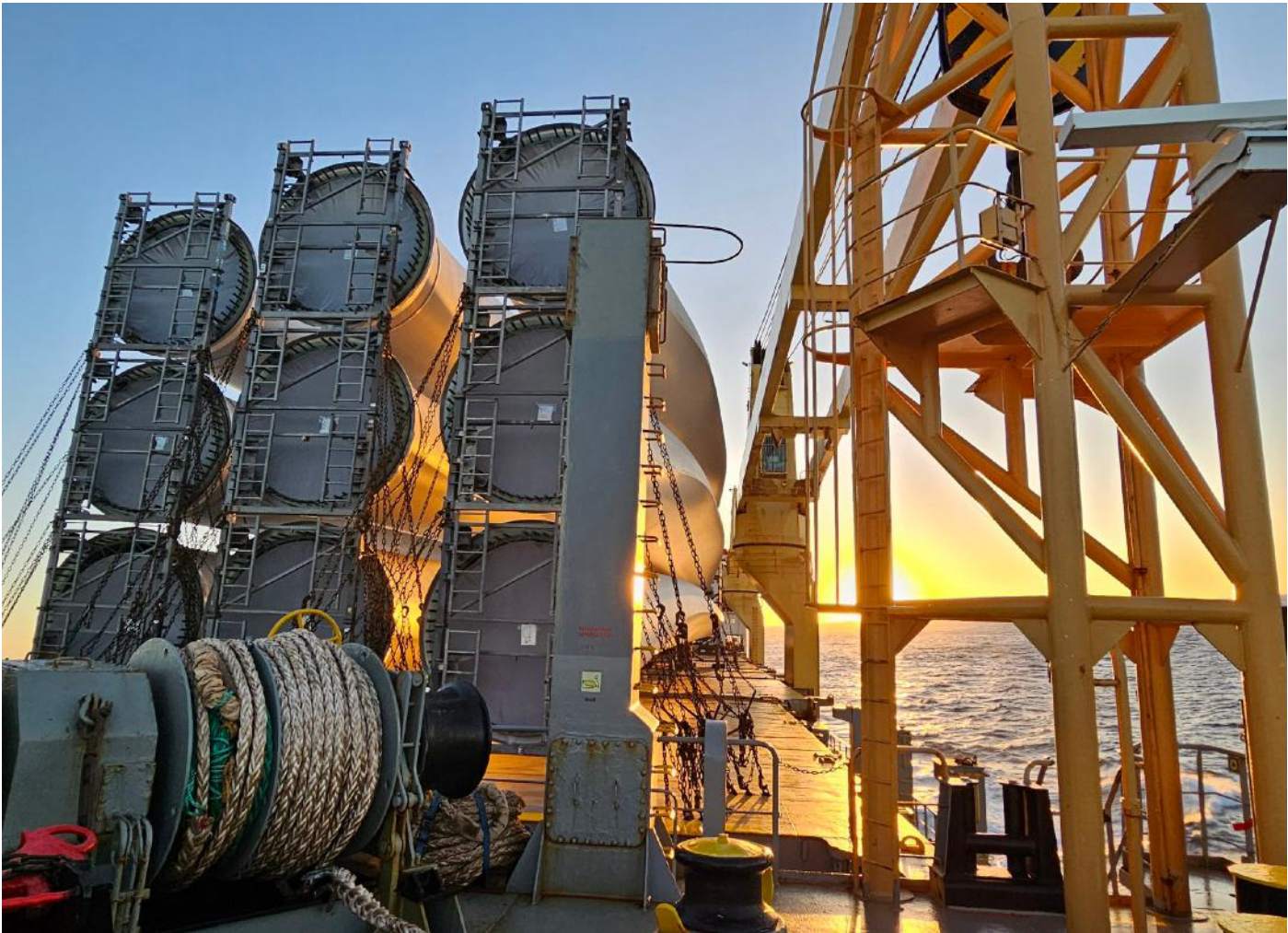




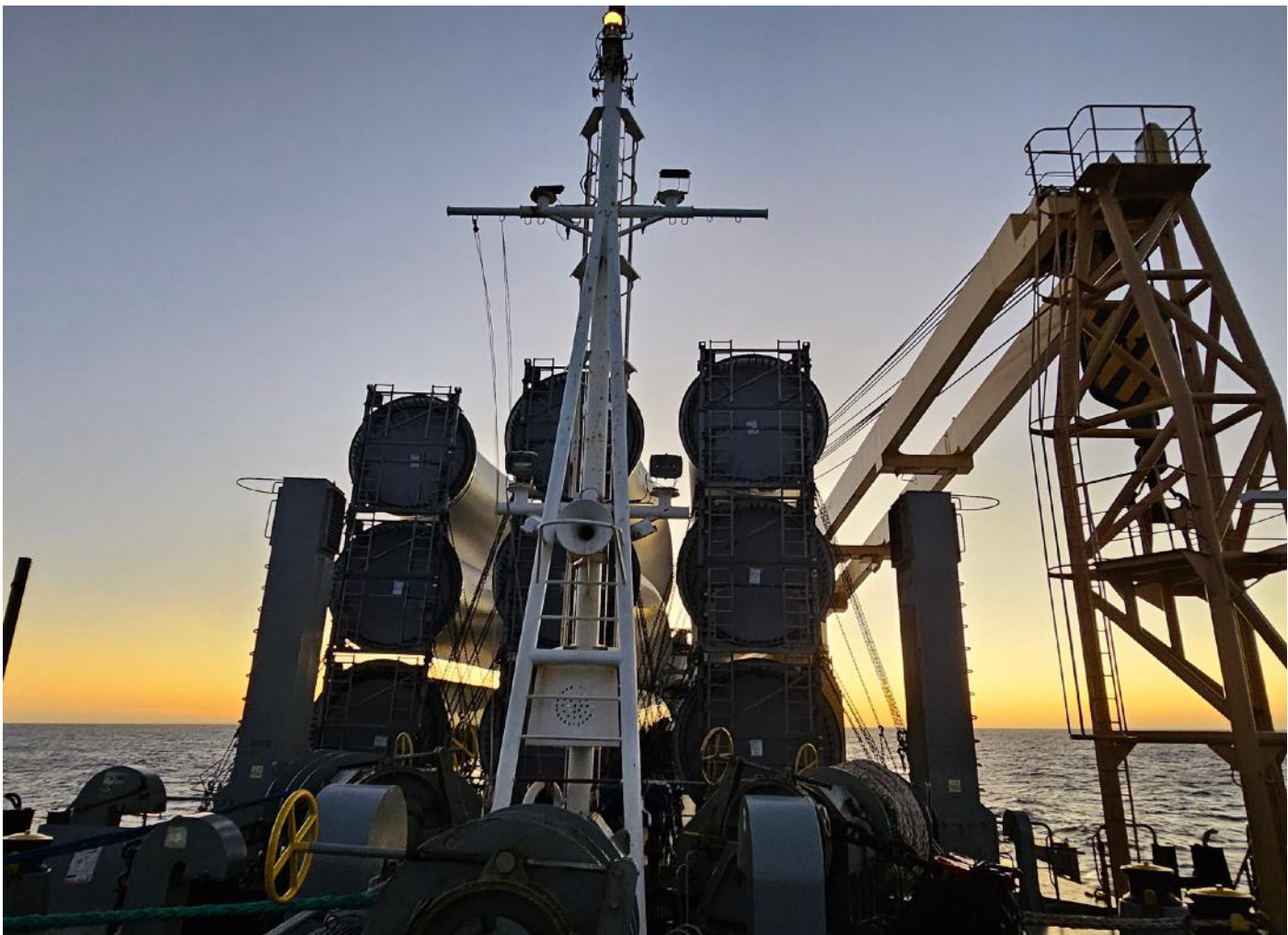




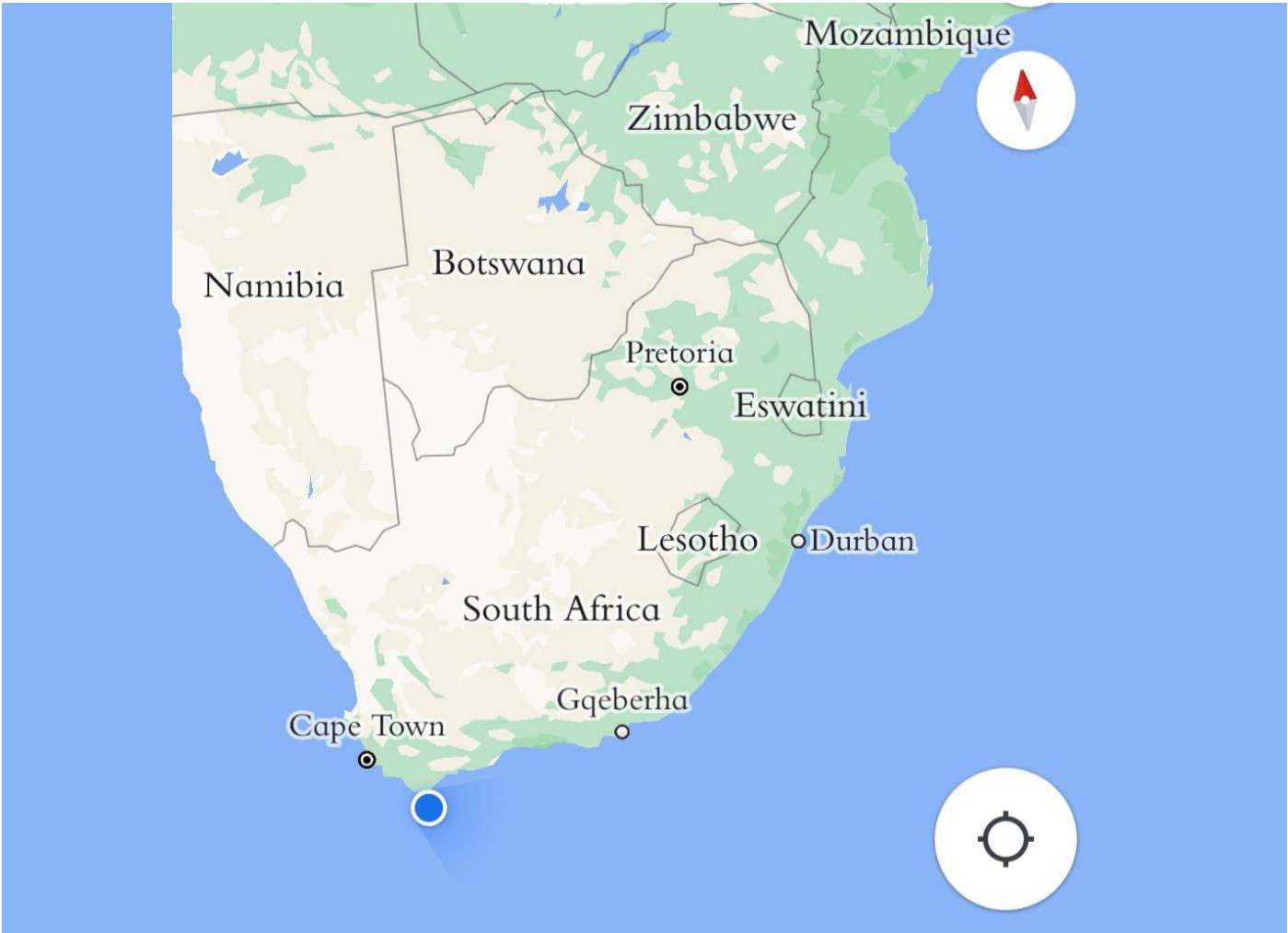












FOOD ONBOARD





















































































GLOBAL READERS

NEUTRAL COVERAGE

IN-DEPTH INTERVIEWS

PROJECT CARGO Weekly

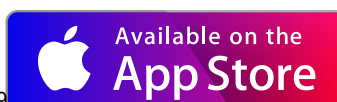
40,000+ GLOBAL RECIPIENTS

✓ Written & Video Interviews

✓ Newsletter

✓ Podcast Episodes

www.projectcargo-weekly.com



Interview with:

COLI SHIPPING - HAMBURG, GERMANY

March 5, 2024



Mr. Felix Peinemann
Managing Director



For starters Felix, I always allow my interviewees to explain a bit about their background. What is your background and why did you get into shipping and logistics in the first place?

Well, I started my career with Panalpina where I did my apprenticeship and worked for the Panprojects Division for approximately 10 years holding various positions and my last one was at the Chartering Desk in charge for all chartering activities of the group. After 10 years I decided to expand my portfolio and joined Coli Shipping in Bremen where I was in charge for renewables for a major US client, I also became MD of Coli in Bremen.

Read the full interview on the Project Cargo Weekly website...



PROJECT CARGO WEEKLY

Interviews with Project Forwarding and Shipping Industry Professionals

GET THE PCW MOBILE APP



FOLLOW PCW



www.projectcargo-weekly.com

Copyright 2024 - Project Cargo Weekly

Part of CLC Projects Group

This work is licensed under a Creative Commons Attribution-NonCommercial-NoDerivs 3.0 Unported License.