

# PLATFORMS



**GUIL**<sup>®</sup>  
www.guil.es



## PROFESSIONAL STAGES

TOTAL SAFETY AT YOUR FEET

# GUIL, MANUFACTURING PLATFORM STAGES SINCE 1983

With more than four decades of experience and specialisation, we provide professionals with robust, precise and reliable platforms, ready to perform at the highest level in any setup.

Designed for intensive use and manufactured exclusively with top-quality materials, our platforms stand out for features that truly make the difference:

- 100% birch plywood panel, ensuring superior strength and long service life.
- Anti-slip surface, providing maximum safety in all conditions.
- Suitable for indoor and outdoor use, thanks to their weather-resistant and fire-retardant treatments.
- Custom sizes available, tailored to the specific requirements of each project.

This high level of performance is complemented by a range of interchangeable legs, allowing multiple configurations, as well as a wide selection of accessories, transport solutions and storage systems, all designed to make professionals' day-to-day work easier.

## GUIL: PROFESSIONAL PLATFORMS FOR PROFESSIONALS.

### **GUIL OFFERS Certified Products**



All our stage platforms comply with the highest safety standards and European Directives, exceeding our customers' expectations.

### **Advanced Design and Technology**



We have the most innovative equipment for the development & manufacture of our platforms and stages, always keeping the needs of the market in mind.

### **100% quality guaranteed**



In the manufacture of our platforms, we use only the highest-quality raw materials and components. At GUIL, safety is our top priority.





### PLATFORMS WITH PLUG-IN LEGS

### SCISSOR TYPE

### MOTORISED

MODEL  
MAX LOAD.  
2x1m

**TM300**  
1500 Kg

**TM440**  
2400 Kg

**TM440XL**  
2800 Kg

**TM440XXL**  
3200 Kg

**TM441**  
1500 Kg

**TM500**  
250 Kg

#### Our Experience



Manufacturing stages since 1983. Our commitment is to continually improve, ensuring the production of the highest-quality products, day after day.

#### Collaboration & Flexibility



Our technical team is always ready to help you make the right choice of platforms & accessories to suit your needs.

#### Service & Commitment



Our clients are our top priority. We are fully dedicated to providing outstanding service, sharing our passion for what we do & the pride we take in our brand.



# STAGES



Certified according to the **NEW EN 17736** standard

# WALKWAYS



# WATER & SNOW



# BARRIERS





**GRANDSTANDS**



**SPECIAL**



**GUIL STAGES: TOTAL SAFETY AT YOUR FEET**



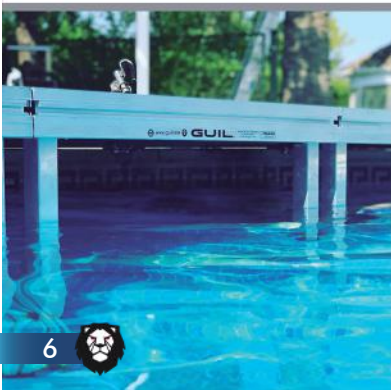
**CHORAL RISERS**



Las Tarimas **GUIL** ofrecen la mejor solución para cualquier tipo de evento; su sistema de montaje tipo mecánico permite desde pequeñas configuraciones a grandes escenarios. Fabricamos 6 modelos de tarimas, todas ellas para su uso en exteriores. Elige el modelo más adecuado a tus necesidades. (Formas y tamaños especiales bajo petición).

GUIL offers a wide range of effective staging solutions. The modular design of **GUIL** deck gives the advantage of being able to cater for both large and small events. We manufacture 6 aluminium deck models, with special treatments for outdoor use as standard. Select the model that best suits your requirements. We make different shapes & sizes on request.

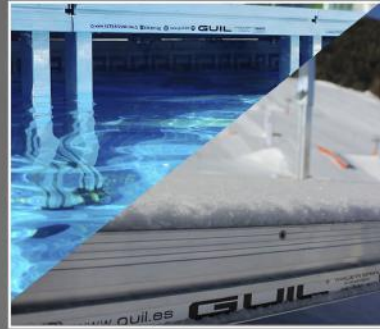
Tarima - Referencia Deck - Reference	TM440	TM440XL	TM440XXL	TM300	TM441
Carga Máxima Maximum Load	1200 kg/m <sup>2</sup>	1400 kg/m <sup>2</sup>	1600 kg/m <sup>2</sup>	750 kg/m <sup>2</sup>	750 kg/m <sup>2</sup>
Uso Use	Interior y Exterior Indoor and Outdoor				
Peso Neto (2x1 m) Net Weight (2x1 m)	42 kg	43 kg	44 kg	32 kg	67,5 kg
Altura Almacenaje Storage Height	100 mm	100 mm	100 mm	100 mm	200 mm
Marco (Material) Frame (Material)	Aluminio Aluminium				
Perfil del Marco (Altura) Frame Profile (Height)	94 mm	94 mm	94 mm	94 mm	85 mm
Medidas Estándar Standard Sizes	2x1 m / 1x1 m 2x0,5 m / 1x0,5 m	2x1 m / 2x0,5 m	2x1 m	2x1 m / 1x1 m	2x1 m
Medidas Especiales Special Dimensions	Si Yes	Si Yes	Si Yes	Si Yes	No No
Tipo de Patas Leg Style	Intercambiables / Desmontable Interchangeable / Removable				Estructura base plegable Folding Base Structure
Patatas (Material) Leg Material	Aluminio Aluminium				Estructura de Acero Steel Structure
Perfil Patas Leg Profiles	∅ 50x50 mm	∅ 50x50 mm	∅ 50x50 mm	∅ 50x50 mm	/
Número de patas Number of Legs	4	6	8	4	/
Alturas disponibles Leg Heights	Si Yes	Si Yes	Si Yes	Si Yes	No No
Panel Panel	Contrachapado fenólico, madera de abedul Birch Phenolic Plywood				
Panel (Espesor) Panel Thickness	21 mm	21 mm	21 mm	15 mm	21 mm
Superficie Surface	Antideslizante Non-slip Top Layer				
Conectores Incluidos Connectors Included	1 x TMU-01 1 x TMU-02	1 x TMU-01 1 x TMU-02	1 x TMU-01 1 x TMU-02	No No	1 x TMU-01 x TMU-02/441
Conforme Con Complies With	DIN 15921: 2015 - 09				



# DETAILS THAT CHARACTERISE US



FIRE-RETARDANT and WATER-REPELLENT treatments



For outdoors/indoors use

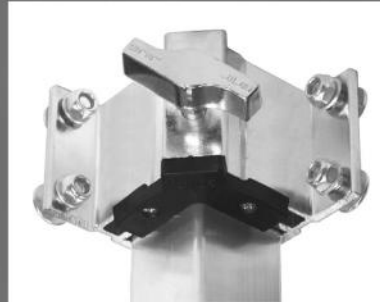


Non-slip surface R-13 Factor



Phenolic-coated plywood

100% BIRCH Plywood. Sealed edges



Reinforced leg sockets



Different finishes



CUSTOM MANUFACTURING OF SPECIAL SIZES AND SHAPES

## CHOOSE YOUR LEG MODEL 50x50mm y 60x60mm



PTA5-T



PTA5-D



PTA5-P



PTA5-F



PTA5-N



PTA5-R



PCR

# GUIL TOTAL SAFETY AT YOUR FEET





# TM300

750 Kg/m<sup>2</sup> (2x1: 1500 Kg)

## HIGH-RESISTANCE PROFESSIONAL PLATFORM

- Certified by **Applus** for a load capacity of 750 kg/m<sup>2</sup> (2x1: 1500 Kg).
- Reinforced aluminium frame + 15 mm anti-slip birch phenolic panel.
- Panel protected against moisture, fire and external agents (FSC and PEFC certified)
- **Triple panel fixing system:** noise- & vibration-free performance.
- Reinforced aluminium leg sockets for greater stability + **multiple leg options.**
- Integrated continuous rail for fast connections and accessories.
- Lightweight, versatile and ideal for temporary installations (stages, walkways and fast setups).



100% BIRCH  
WOOD



FOR OUTDOORS  
USE



REINFORCED  
LEG SOCKETS



WATER-REPELLENT  
FIRE-RETARDANT  
TREATMENTS



SPECIFICATIONS	TM300
Maximum Load	750 kg/m <sup>2</sup> (7,5 KN/m <sup>2</sup> ) (2×1 m: 1500 kg)
Panel	100 % Finnish Birch Wood   Phenolic plywood (WBP) Thickness: 15 mm
Certified according to the norm	EN 17736 EU Regulation 2023/988
Environment	FSC Certificate   PEFC Certificate
Reaction to fire	Classification: C <sub>fl</sub> -s1 (According to norm: DIN EN 13501-1)
Non-slip surface	R-13 (According to norm: DIN 51130)
Material	Reinforced Aluminium, alloy EN AW 6063 80-T6
Use	For outdoor & indoor use. Resistant to all weather conditions.
Standard Heights	From 10 to 200 cm (special heights by petition)
Standard Dimensions	2×1 m / 1×1 m / 2×0,5 m / 1×0,5 m (other sizes by petition)
Net weight	32 kg (2×1 m)
Stacking Height	10 cm

## CERTIFIED PLATFORMS

**NEW**  
EU STANDARD  
EN 17736

- I** The TM300 is a high-resistance modular platform, **certified by Applus for a load capacity of 750 kg/m<sup>2</sup> in accordance with EN17736 and EU Regulation 2023/988**, with tests carried out at 3,000 kg (safety factor 2).
- I** Its extruded aluminium structure features a **reinforced 94 mm profile with four ribs**, ensuring stability without the need for additional bars.
- I** The **15 mm birch phenolic panel**, exclusive to this range, offers high durability thanks to its multilayer construction, hot-applied anti-slip finish and WBP resins resistant to water and weathering. It is subjected to **water-repellent, fire-retardant and chemical-resistant treatments**, with edges sealed using acrylic paint. It complies with EN 13986, EN 314-2 / Class 3 and DIN 51130. The panel is sourced from responsibly managed forests and is **FSC certified**.
- I** The **continuous rail design** allows fast connections and the **integration of accessories** such as handrails, stairs, skirting panels or seating.
- I** The **panel is fixed to the frame by means of a triple system (high-bond foam, stainless steel screws and silicone)** preventing noise and vibrations.
- I** The **ALUMINIUM LEG SOCKETS**, fixed with M8 fasteners and fitted with a reinforced protective cover, facilitate assembly, protect the panel and ensure a stable housing for the legs by means of an ergonomic metal knob.
- I** Lightweight, robust and reliable, the TM300 is **ideal for fast and demanding installations in stages, podiums, walkways and professional applications**.

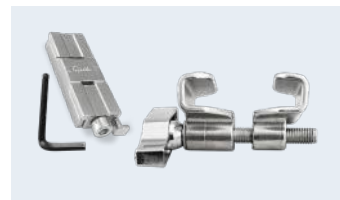


# TM440

1200 Kg/m<sup>2</sup> (2x1 :2400 Kg)

## PROFESSIONAL PLATFORM – MAXIMUM STRENGTH AND SAFETY

- Certified by **Applus** for a load capacity of 750 kg/m<sup>2</sup> (2x1 : 1500 Kg).
- Reinforced aluminium frame + 15 mm anti-slip birch phenolic panel.
- Panel protected against moisture, fire and external agents (FSC and PEFC certified)
- **Triple panel fixing system**: noise- & vibration-free performance.
- Reinforced aluminium leg sockets for greater stability + **multiple leg options**.
- **Integrated continuous rail** for fast connections and accessories.
- Robust and reliable platform for high-end productions that require maximum safety.



**CONNECTORS INCLUDED**



**100% BIRCH WOOD**



**FOR OUTDOORS USE**



**REINFORCED LEG SOCKETS**



**WATER-REPELLENT FIRE-RETARDANT TREATMENTS**



SPECIFICATIONS	TM440
Maximum Load	1200 kg/m <sup>2</sup> (7,5 KN/m <sup>2</sup> ) (2×1 m: 2400 kg)
Panel	100 % Finnish Birch Wood   Phenolic plywood (WBP) Thickness: 21 mm
Certified according to the norm	EN 17736 EU Regulation 2023/988
Environment	FSC Certificate   PEFC Certificate
Reaction to fire	Classification: C <sub>fl</sub> -s1 (According to norm: DIN EN 13501-1)
Non-slip surface	R-13 (According to norm: DIN 51130)
Material	Reinforced Aluminium, alloy EN AW 6063 80-T6
Use	For outdoor & indoor use. Resistant to all weather conditions.
Standard Heights	From 10 to 200 cm (special heights by petition)
Standard Dimensions	2×1 m / 1×1 m / 2×0,5 m / 1×0,5 m (other sizes by petition)
Net weight	42 kg (2×1 m)
Stacking Height	10 cm

## CERTIFIED PLATFORMS

**NEW**  
EU STANDARD  
EN 17736

- I** The TM440 is a high-resistance modular platform, **certified by Applus for a load capacity of 1200 kg/m<sup>2</sup> in accordance with EN17736 and EU Regulation 2023/988**, with tests carried out at 4800 kg (safety factor 2).
- I** Its extruded aluminium structure features a **reinforced 94 mm profile with four ribs**, ensuring stability without the need for additional bars.
- I** The **21mm birch phenolic panel**, exclusive to this range, offers high durability thanks to its multilayer construction, hot-applied anti-slip finish and WBP resins resistant to water and weathering. It is subjected to **water-repellent, fire-retardant and chemical-resistant treatments**, with edges sealed using acrylic paint. It complies with EN 13986, EN 314-2 / Class 3 and DIN 51130. The panel is sourced from responsibly managed forests and is **FSC certified**.
- I** The **continuous rail design** allows fast connections and the **integration of accessories** such as handrails, stairs, skirting panels or seating.
- I** The **panel is fixed to the frame by means of a triple system (high-bond foam, stainless steel screws and silicone)** preventing noise and vibrations.
- I** The **ALUMINIUM LEG SOCKETS**, fixed with M8 fasteners and fitted with a reinforced protective cover, facilitate assembly, protect the panel and ensure a stable housing for the legs by means of an ergonomic metal knob.
- I** The TM440 is a **reliable choice for stages and structures requiring maximum stability under all conditions**.



# TM440XL

1400 Kg/m<sup>2</sup> (2x1 :2800 Kg)

## PROFESSIONAL PLATFORM – HIGH LOAD CAPACITY

- Certified by **Applus** for a load capacity of 1400 kg/m<sup>2</sup> (2x1 : 2800 Kg).
- Reinforced aluminium frame + 21 mm anti-slip birch phenolic panel.
- Panel protected against moisture, fire and external agents (FSC and PEFC certified)
- **Triple panel fixing system:** noise- & vibration-free performance.
- 6 Reinforced aluminium leg sockets for greater stability + **multiple leg options.**
- Integrated continuous rail for fast connections and accessories.
- Ideal for large-scale stages. It provides firmness, precision and visual continuity.



**CONNECTORS INCLUDED**



**100% BIRCH WOOD**



**FOR OUTDOORS USE**



**6 REINFORCED LEG SOCKETS**



**WATER-REPELLENT FIRE-RETARDANT TREATMENTS**



SPECIFICATIONS	TM440XL
Maximum Load	1400 kg/m <sup>2</sup> (7,5 KN/m <sup>2</sup> ) (2×1 m: 2800 kg)
Panel	100 % Finnish Birch Wood   Phenolic plywood (WBP) Thickness: 21 mm
Certified according to the norm	EN 17736 EU Regulation 2023/988
Environment	FSC Certificate   PEFC Certificate
Reaction to fire	Classification: C <sub>fl</sub> -s1 (According to norm: DIN EN 13501-1)
Non-slip surface	R-13 (According to norm: DIN 51130)
Material	Reinforced Aluminium, alloy EN AW 6063 80-T6
Use	For outdoor & indoor use. Resistant to all weather conditions.
Standard Heights	From 10 to 200 cm (special heights by petition)
Standard Dimensions	2×1 m / 1×1 m / 2×0,5 m / 1×0,5 m (other sizes by petition)
Net weight	43 kg (2×1 m)
Stacking Height	10 cm

## CERTIFIED PLATFORMS

**NEW**  
EU STANDARD  
EN 17736

- I** The TM440XL is a high-resistance modular platform, **certified by Applus for a load capacity of 1400 kg/m<sup>2</sup> in accordance with EN17736 and EU Regulation 2023/988**, with tests carried out at 5600 kg (safety factor 2).
- I** Its extruded aluminium structure features a **reinforced 94 mm profile with four ribs**, ensuring stability without the need for additional bars.
- I** The **21mm birch phenolic panel**, exclusive to this range, offers high durability thanks to its multilayer construction, hot-applied anti-slip finish and WBP resins resistant to water and weathering. It is subjected to **water-repellent, fire-retardant and chemical-resistant treatments**, with edges sealed using acrylic paint. It complies with EN 13986, EN 314-2 / Class 3 and DIN 51130. The panel is sourced from responsibly managed forests and is **FSC certified**.
- I** The **continuous rail design** allows fast connections and the **integration of accessories** such as handrails, stairs, skirting panels or seating.
- I** The **panel is fixed to the frame by means of a triple system (high-bond foam, stainless steel screws and silicone)** preventing noise and vibrations.
- I** The **6 ALUMINIUM LEG SOCKETS**, fixed with M8 fasteners and fitted with a reinforced protective cover, facilitate assembly, protect the panel and ensure a stable housing for the legs by means of an ergonomic metal knob.
- I** The TM440XL is the preferred choice for events requiring large surface areas with precision and stability.



# TM440XXL

1 600 Kg/m<sup>2</sup> (2x1 : 3200 Kg)

## PROFESSIONAL PLATFORM FOR EXTREME LOADS

- Certified by **Applus** for a load capacity of 1600 kg/m<sup>2</sup> (2x1 : 3200 Kg).
- Reinforced aluminium frame + 21 mm anti-slip birch phenolic panel.
- Panel protected against moisture, fire and external agents (FSC and PEFC certified)
- **Triple panel fixing system:** noise- & vibration-free performance.
- 8 Reinforced aluminium leg sockets for greater stability + **multiple leg options**.
- Integrated continuous rail for fast connections and accessories.
- Ideal for large-scale events and complex installations where absolute strength is required.



**CONNECTORS  
INCLUDED**



**100% BIRCH  
WOOD**



**FOR OUTDOORS  
USE**



**8 REINFORCED  
LEG SOCKETS**



**WATER-REPELLENT  
FIRE-RETARDANT  
TREATMENTS**



SPECIFICATIONS	TM440XXL
Maximum Load	1600 kg/m <sup>2</sup> (14 KN/m <sup>2</sup> ) (2×1 m: 3200 kg)
Panel	100 % Finnish Birch Wood   Phenolic plywood (WBP) Thickness: 21 mm
Certified according to the norm	EN 17736 EU Regulation 2023/988
Environment	FSC Certificate   PEFC Certificate
Reaction to fire	Classification: C <sub>fl</sub> -s1 (According to norm: DIN EN 13501-1)
Non-slip surface	R-13 (According to norm: DIN 51130)
Material	Reinforced Aluminium, alloy EN AW 6063 80-T6
Use	For outdoor & indoor use. Resistant to all weather conditions.
Standard Heights	From 10 to 200 cm (special heights by petition)
Standard Dimensions	2×1 m (other sizes by petition)
Net weight	44 kg (2×1 m)
Stacking Height	10 cm

## CERTIFIED PLATFORMS

**NEW**  
EU STANDARD  
EN 17736

■ The TM440 XXL is a high-resistance modular platform, **certified by Applus for a load capacity of 1600 kg/m<sup>2</sup> in accordance with EN17736 and EU Regulation 2023/988**, with tests carried out at 6400 kg (safety factor 2).

■ Its extruded aluminium structure features a **reinforced 94 mm profile with four ribs**, ensuring stability without the need for additional bars.

■ The **21mm birch phenolic panel**, exclusive to this range, offers high durability thanks to its multilayer construction, hot-applied anti-slip finish and WBP resins resistant to water and weathering. It is subjected to **water-repellent, fire-retardant and chemical-resistant treatments**, with edges sealed using acrylic paint. It complies with EN 13986, EN 314-2 / Class 3 and DIN 51130. The panel is sourced from responsibly managed forests and is **FSC certified**.

■ The **continuous rail design** allows fast connections and the **integration of accessories** such as handrails, stairs, skirting panels or seating.

■ **The panel is fixed to the frame by means of a triple system (high-bond foam, stainless steel screws and silicone)** preventing noise and vibrations.

■ The 8 **ALUMINIUM LEG SOCKETS**, fixed with M8 fasteners and fitted with a reinforced protective cover, facilitate assembly, protect the panel and ensure a stable housing for the legs by means of an ergonomic metal knob.

■ La TM440XXL is **the ultimate solution for large stages, grandstands and structures that demand a superior level of strength and reliability**.



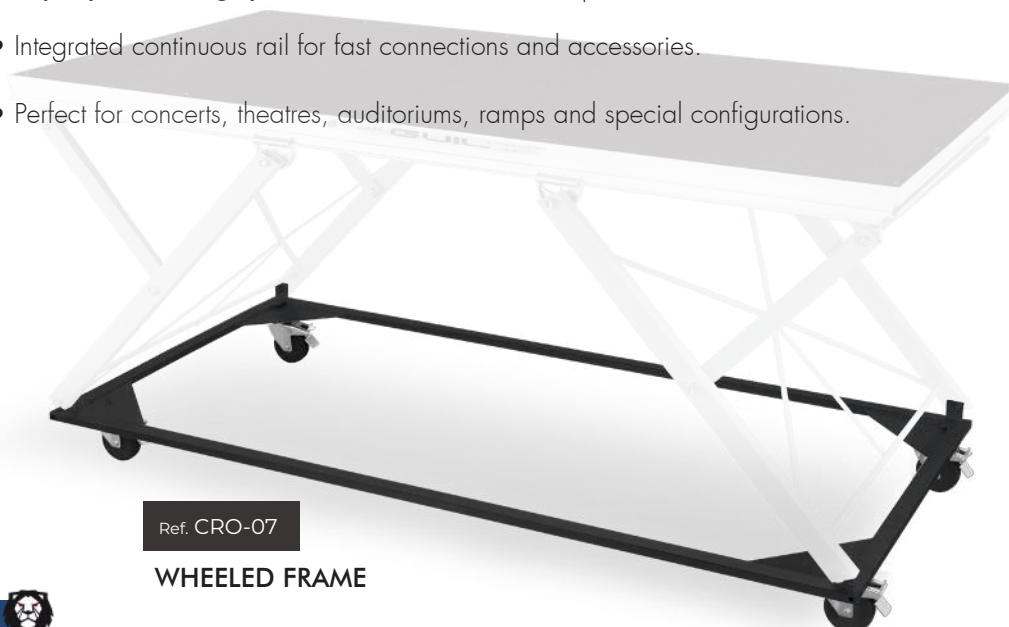
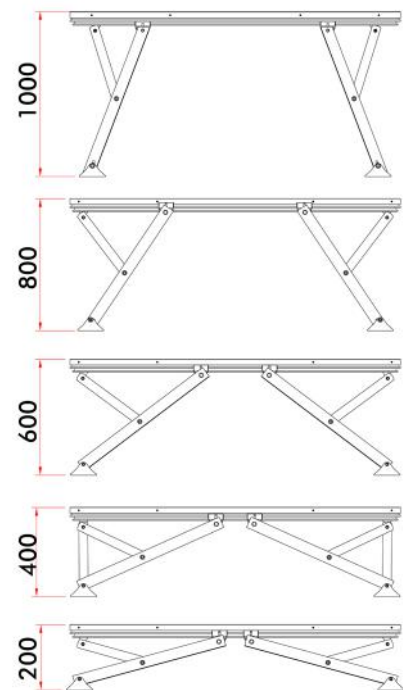


# TM441/N

750 Kg/m<sup>2</sup> (2x1: 1500 Kg)

## SCISSOR-TYPE PROFESSIONAL PLATFORM

- Certified for a load capacity of 750 kg/m<sup>2</sup> (2x1: 1500 Kg).
- REINFORCED ALUMINIUM FRAME AND STEEL BASE STRUCTURE
- Phenolic panel, 100% birch wood, 21 mm thick, with anti-slip surface.
- Panel protected against moisture, fire and external agents (FSC and PEFC certified).
- Triple panel fixing system: noise- & vibration-free performance.
- Integrated continuous rail for fast connections and accessories.
- Perfect for concerts, theatres, auditoriums, ramps and special configurations.



Ref. CRO-07

WHEELED FRAME



SPECIFICATIONS	TM441/N
Maximum Load	750 kg/m <sup>2</sup> (7,5 KN/m <sup>2</sup> ) (2×1 m: 1500 kg)
Panel	100 % Finnish Birch Wood   Phenolic plywood (WBP) Thickness: 21 mm
Certified according to the norm	EN 17736 EU Regulation 2023/988
Environment	FSC Certificate   PEFC Certificate
Reaction to fire	Classification: C <sub>fi</sub> -s1 (According to norm: DIN EN 13501-1)
Non-slip surface	R-13 (According to norm: DIN 51130)
Material	Aluminium, alloy EN AW 6063 80-T6 Base: reinforced steel structure (DIN 2393)
Connectors included	1 x TMU-01 y 1 x TMU-02/441 (stainless)
Use	For outdoor & indoor use. Resistant to all weather conditions.
Standard Heights	From 10 to 200 cm (special heights by petition)
Standard Dimensions	2×1 m
Net weight	44 kg
Stacking Height	20 cm



100% BIRCH  
WOOD



FOR OUTDOORS  
USE



INDEPENDENT HEIGHT  
ADJUSTMENT SYSTEM

! The TM441/N is a high-resistance modular platform, **certified for a load capacity of 750 kg/m<sup>2</sup> in accordance with EN17736 and EU Regulation 2023/988**, with tests carried out at 3000 kg (safety factor 2).

! Its extruded aluminium structure features a **reinforced 85 mm profile with four ribs**, ensuring stability without the need for additional bars.

! The **21mm birch phenolic panel**, exclusive to this range, offers high durability thanks to its multilayer construction, hot-applied anti-slip finish and WBP resins resistant to water and weathering. It is subjected to **water-repellent, fire-retardant and chemical-resistant treatments**, with edges sealed using acrylic paint. It complies with EN 13986, EN 314-2 / Class 3 and DIN 51130. The panel is sourced from responsibly managed forests and is **FSC certified**.

! The **continuous rail design** allows fast connections and the **integration of accessories** such as handrails, stairs, skirting panels or seating

! The **panel is fixed to the frame by means of a triple system (high-bond foam, stainless steel screws and silicone)** preventing noise and vibrations.

! The leg structure is made of high-strength steel. Its special height adjustment system allows each side of the structure to be adjusted independently.



# TM500

125 Kg/m<sup>2</sup> (2x1:250 Kg)

## MOTORISED PROFESSIONAL PLATFORM

- Wireless remote control equipped with an emergency stop switch.
- Height range from 46 to 150 cm (can stop at any position)
- Phenolic panel, 100% birch wood, 15 mm thick, with anti-slip surface..
- Panel protected against moisture, fire and external agents (FSC and PEFC certified).
- The TM500 is the perfect choice for creating a unique and impactful staging.



**TM500**

TARIMA MOTORIZADA

MOTORISED STAGE  
PLATFORM



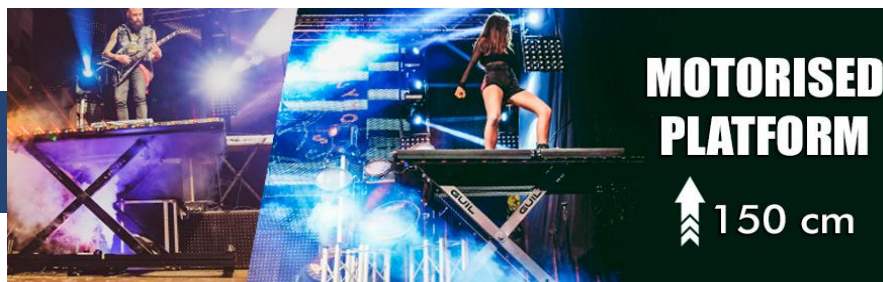
100% BIRCH  
WOOD



↑ Max. 150 cm - Min. 46.5 cm  125 kg/m<sup>2</sup>



SPECIFICATIONS	TM500
Maximum Load	125 kg/m <sup>2</sup> (1,25 KN/m <sup>2</sup> ) (2×1 m: 250 kg)
Panel	100 % Finnish Birch Wood   Phenolic plywood (WBP) Thickness: 15 mm
Certified according to the norm	EN 17736   EU Regulation 2023/988
Environment	PEFC Certificate
Reaction to fire	Classification: C <sub>fl</sub> -s1 (According to norm: DIN EN 13501-1)
Non-slip surface	R-13 (According to norm: DIN 51130)
Material	Aluminium, alloy EN AW 6063 80-T6
Lifting system	Electric / Maximum power supply: 220 V
Height range	De 46 cm a 150 cm. It can stop at any point within this range
Platform Weight	Con patas: 130 Kg – Con ruedas: 134 Kg
Dimensions with Legs/wheels	200 x 100 x 46 cm
Folded dimensions	200 x 100 x 26 cm
Remote Control	Wireless, with emergency stop
Certified according to the norm	Directive 2006/42/CE, EN 17206 DGUV Regulations 17 and 18 DGUV Rule 115-002



■ Motorised professional aluminium platform, 2 × 1 m, **equipped with four swivel wheels with brakes and four fixed legs**. Our TM500 motorised platform is the perfect choice for ensuring a unique and impactful staging. Its operation is fast and simple: a single operator can control the platform height using a bi-directional control system equipped with an emergency stop switch. During the event, the height can be adjusted to create a striking visual effect. **The height range extends from 46 cm to 150 cm, with the ability to stop at any point.**

■ The **15 mm birch phenolic panel**, exclusive to this range, offers high durability thanks to its multilayer construction, hot-applied anti-slip finish and WBP resins resistant to water and weathering. It is subjected to **water-repellent, fire-retardant and chemical-resistant treatments**, with edges sealed using acrylic paint. It complies with EN 13986, EN 314-2 / Class 3 and DIN 51130. **The panel is sourced from responsibly managed forests and is FSC certified.**

■ **Platform elevation:** The TM500 platform is equipped with an electric motor operated via a wireless remote control (equipped with an emergency stop switch), allowing the platform to be raised or lowered as required by the performance. The electric motor allows the platform to be lifted with a load of up to 250 kg evenly distributed (125 kg/m<sup>2</sup>) to a maximum height of 150 cm. The motor automatically stops raising or lowering the platform when the remote control buttons are released, locking the platform in position. This allows the platform to be stopped at any height between 46 cm and 150 cm, depending on the requirements of each event.

■ **Automatic stop:** The platform is equipped with limit switches that cut off the motor power during both upward and downward movement. When the platform reaches its maximum or minimum height, the power supply is cut, causing the motor to stop operating and locking the platform in position.

■ **Damping blocks:** The corners of the lower frame of the platform are fitted with four high-resistance silent blocks, which absorb vibrations and cushion the platform during its descent to the resting position, thereby ensuring maximum safety.

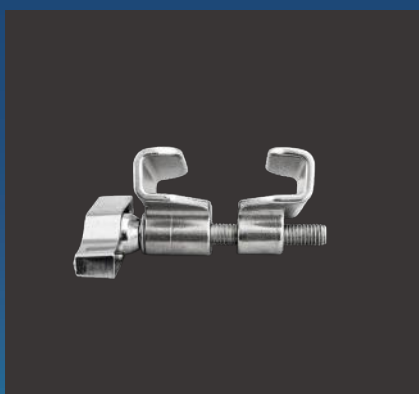
# CONNECTORS



## TMU-01

Deck to deck connector

- Connects and levels platforms at the same height.
- Rail insertion + Allen key fixing.
- Ideal for installations without legs or with very low heights.

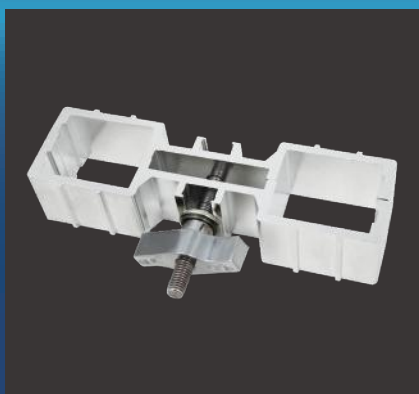


## TMU-02

Deck to deck Clamp

- Reinforced internal fixing between frames.
- Eliminates vertical movement.
- Stainless steel: durable and professional.

TMU-02/441: For TM441/N platforms



## TMU-04

Leg to leg clamp 50×50 mm

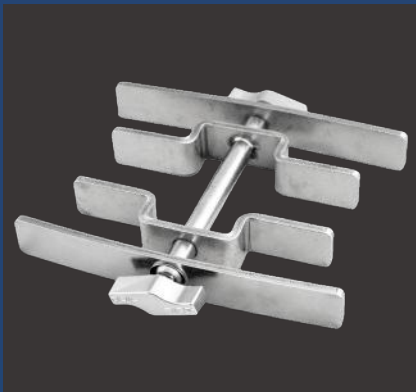
- Connects 50 × 50 mm legs.
- Provides extra stability in single-level or multi-level configurations.
- Reinforced aluminium + metal knob.
- Fast and secure assembly.



## PRECISION, STABILITY AND PROFESSIONAL INSTALLATION

GUIL connection systems are designed to ensure precise alignment, structural stability and continuity between platforms in any configuration. From guide connectors and internal joints to leg-to-leg, leg-to-frame systems and cladding solutions, every component guarantees a solid, fast and safe installation.

Manufactured in aluminium or stainless steel and fully integrated into the GUIL system, they allow single-level, multi-level or stepped installations to be carried out with complete reliability and a professional finish.



### TMU-08

4-leg clamp 50×50 / 60×60 mm

- Connects four legs simultaneously.
- Maximum structural stability.
- Stainless steel + ergonomic knob.
- High durability and resistance.



### TMU-05

Leg to leg clamp 60×60 mm

- Connects 60 × 60 mm legs.
- Stainless steel + metal knob.
- Robust and durable fixing.
- Fast and secure assembly.

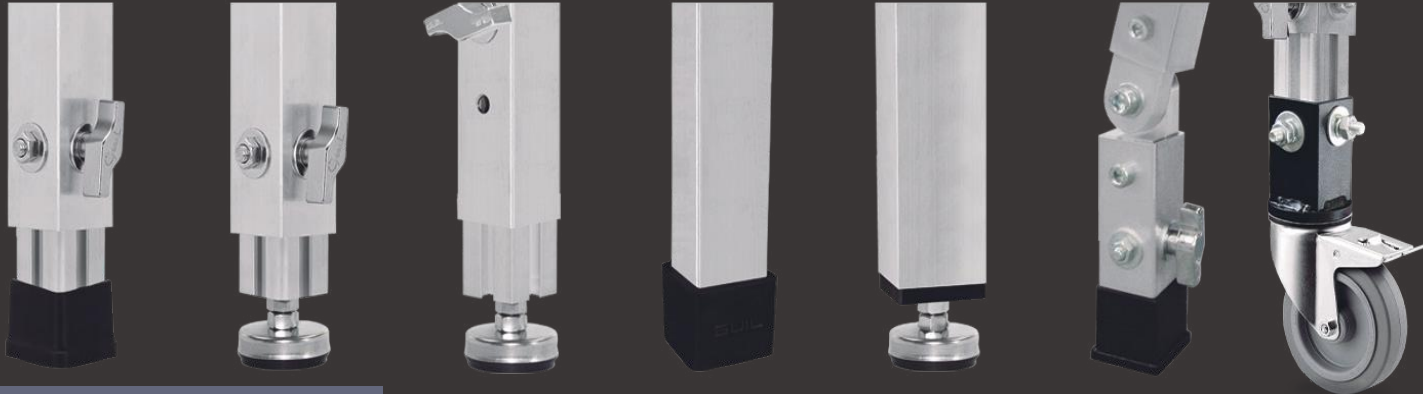


### TMU-07

Leg to leg clamp

- Strengthened connector to join platforms with different heights by their legs.
- Eliminates vertical movement.
- Stainless steel: durable and professional.
- Connects 50 × 50 mm legs





# ALUMINIUM LEGS 50x50mm

Designed to provide structural stability, precise adjustment and safe assembly in any platform configuration. Manufactured from high-strength aluminium and equipped with reinforced profiles, they ensure full compatibility with our platforms and professional performance even under the most demanding conditions.

## PTA5-F



### FIXED HEIGHT LEGS (50x50 mm)

- Reinforced high-strength aluminium profile.
- Four 4 mm internal ribs for increased structural stability.
- Compatible with TM300, TM440, TM440XL and TM440XXL.
- Anti-slip rubber end cap for steady support.
- Custom manufacturing available.
- Designed for professional use: reliability and easy assembly.

## PTA5-N



### FIXED HEIGHT LEG W/ADJUSTABLE LEVELLER (50x50 mm)

- Reinforced profile (4 internal ribs).
- Stainless steel leveller spindle (50 mm).
- Precisely corrects uneven surfaces.
- Anti-slip rubber end cap.
- Custom manufacturing available.
- Compatible with TM300, TM440, TM440XL and TM440XXL.

## PTA15-N/15



### FIXED HEIGHT LEG TO MAKE FLOORING (50x50 mm/15 cm)

- Fixed height: 15 cm.
- 50 x 50 mm profile with 4 internal ribs.
- Stainless steel leveller spindle (50 mm).
- Anti-slip end cap.
- Compatible with TM300, TM440, TM440XL and TM440XXL.



**TELESCOPIC LEGS (50x50 mm)**

- Profile with 4 external ribs + 9 internal ribs.
- Millimetric telescopic adjustment.
- Locking system with ergonomic metal knob + M10 nut.
- Custom manufacturing available.
- Ideal for flexible installations.
- Compatible with:  
TM300, TM440, TM440XL y TM440XXL.

**TELESCOPIC LEGS WITH LEVELLER (50x50 mm)**

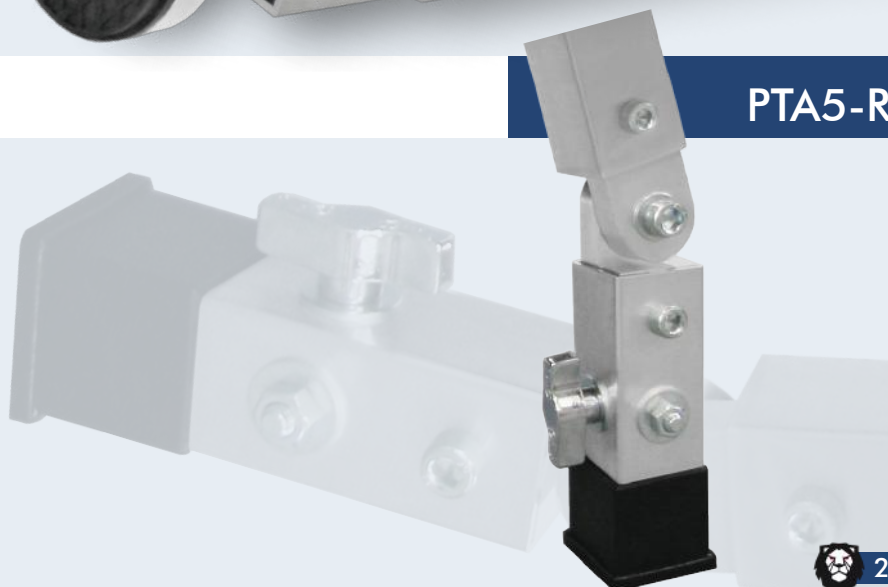
- Profile with 4 external ribs + 9 internal ribs.
- Millimetric telescopic adjustment.
- Locking system with ergonomic metal knob + M10 nut.
- M12 stainless steel leveller spindle.
- Custom manufacturing available.
- For installations requiring fine levelling.

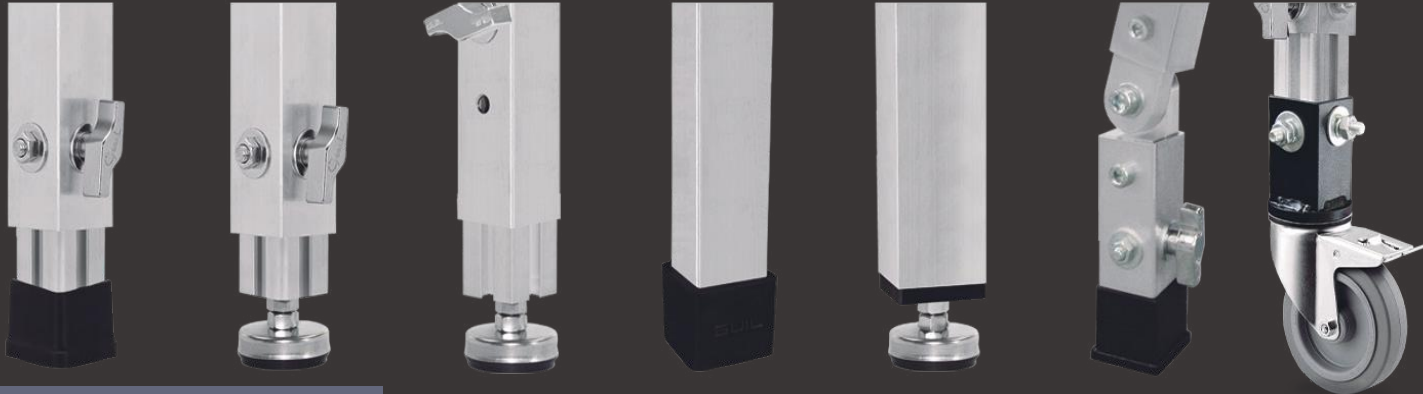
**TELESCOPIC LEGS WITH LOCKING PIN + LEVELLER (50x50 mm)**

- Profile with 4 external ribs + 9 internal ribs.
- Millimetric telescopic adjustment.
- Locking system with pin + knob.
- M12 leveller with 50 mm adjustment range.
- Custom manufacturing available.
- For maximum safety and fast adjustment.

**ANGLE ADJUSTABLE TELESCOPIC LEG**

- Profile with 4 external ribs + 9 internal ribs.
  - Articulation joint for ramps and inclines.
  - Millimetric telescopic adjustment.
  - Locking system with knob + M10 nut.
  - Reinforced anti-slip end caps.
  - Custom manufacturing available.
- Minimum length: 50 cm.





# ALUMINIUM LEGS 60x60mm

Designed to provide structural stability, precise adjustment and safe assembly in any platform configuration. Manufactured from high-strength aluminium and equipped with reinforced profiles, they ensure full compatibility with our platforms and professional performance even under the most demanding conditions.

## PTA6-F



### FIXED HEIGHT LEGS (60x60 mm)

- Reinforced high-strength aluminium profile.
- Four 4 mm internal ribs for increased structural stability.
- Compatible with TM300, TM440, TM440XL and TM440XXL.
- Anti-slip rubber end cap for steady support.
- Custom manufacturing available.
- Designed for professional use: reliability and easy assembly.

## PTA6-N



### FIXED HEIGHT LEG W/ADJUSTABLE LEVELLER (60x60 mm)

- Reinforced profile (4 internal ribs).
- Stainless steel leveller spindle (50 mm).
- Precisely corrects uneven surfaces.
- Anti-slip rubber end cap.
- Custom manufacturing available.
- Compatible with TM300, TM440, TM440XL and TM440XXL.

## PTA15-N/15



### FIXED HEIGHT LEG TO MAKE FLOORING (60x60 mm/15 cm)

- Fixed height: 15 cm.
- 50 x 50 mm profile with 4 internal ribs.
- Stainless steel leveller spindle (50 mm).
- Anti-slip end cap.
- Compatible with TM300, TM440, TM440XL and TM440XXL.



**TELESCOPIC LEGS (60x60 mm)**

- Profile with 4 external ribs + 9 internal ribs.
- Millimetric telescopic adjustment.
- Locking system with ergonomic metal knob + M10 nut.
- Custom manufacturing available.
- Ideal for flexible installations.
- Compatible with:  
TM300, TM440, TM440XL y TM440XXL.

**TELESCOPIC LEGS WITH LEVELLER (60x60 mm)**

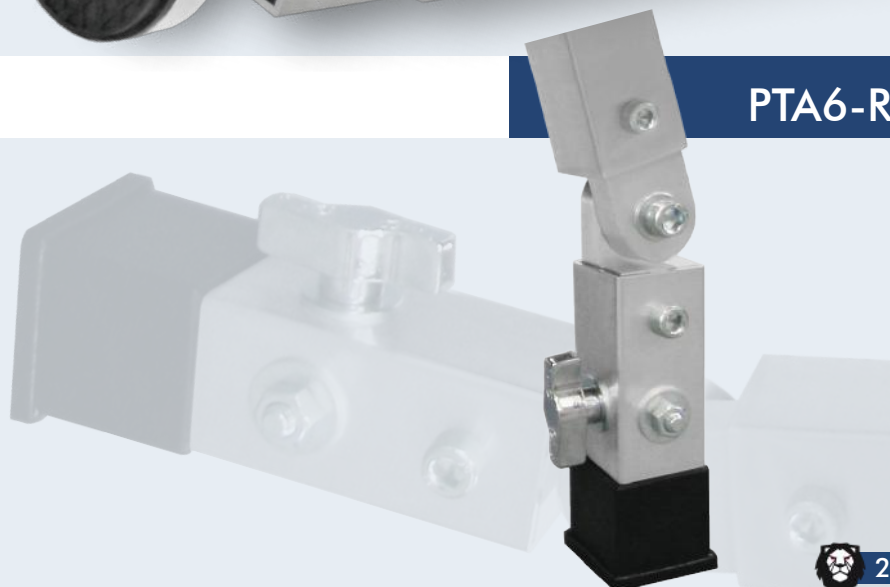
- Profile with 4 external ribs + 9 internal ribs.
- Millimetric telescopic adjustment.
- Locking system with ergonomic metal knob + M10 nut.
- M12 stainless steel leveller spindle.
- Custom manufacturing available.
- For installations requiring fine levelling.

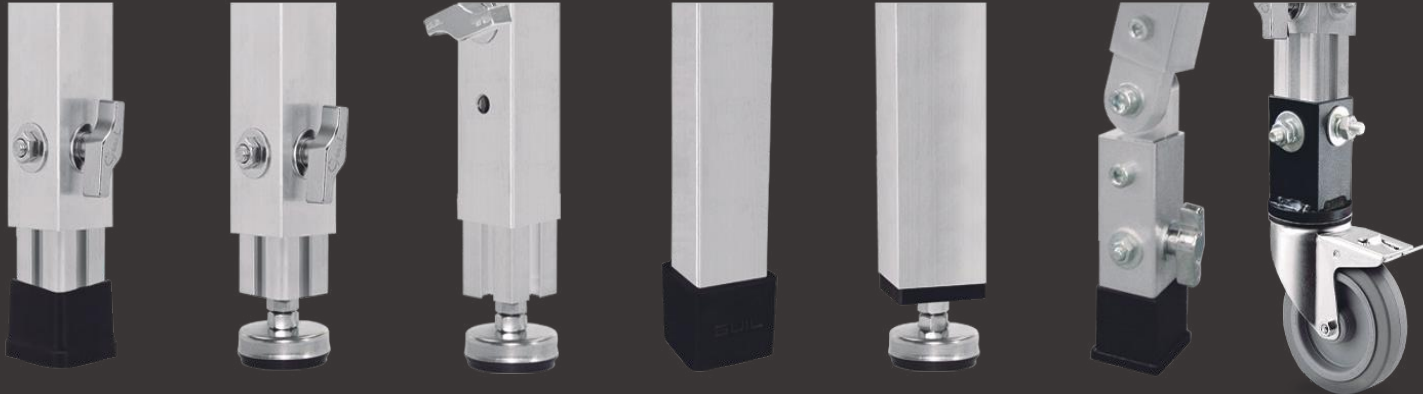
**TELESCOPIC LEGS WITH LOCKING PIN + LEVELLER (60x60 mm)**

- Profile with 4 external ribs + 9 internal ribs.
- Millimetric telescopic adjustment.
- Locking system with pin + knob.
- M12 leveller with 50 mm adjustment range.
- Custom manufacturing available.
- For maximum safety and fast adjustment.

**ANGLE ADJUSTABLE TELESCOPIC LEG**

- Profile with 4 external ribs + 9 internal ribs.
- Articulation joint for ramps and inclines.
- Millimetric telescopic adjustment.
- Locking system with knob + M10 nut.
- Reinforced anti-slip end caps.
- Custom manufacturing available.
- Minimum length: 50 cm.





# ALUMINIUM LEGS

# TABLES

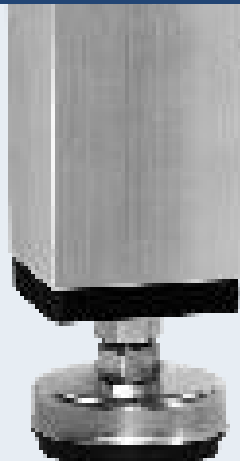
## PTA-F



REFERENCE	STAGE HEIGHT
PTA5-F/20	20 cm (8in)
PTA5-F/40	40 cm (1ft 4in)
PTA5-F/60	60 cm (1ft 12in)
PTA5-F/80	80 cm (2ft 7in)
PTA5-F/100	100 cm (3ft 3in)

REFERENCE	STAGE HEIGHT
PTA6-F/20	20 cm (8in)
PTA6-F/40	40 cm (1ft 4in)
PTA6-F/60	60 cm (1ft 12in)
PTA6-F/80	80 cm (2ft 7in)
PTA6-F/100	100 cm (3ft 3in)

## PTA-N



REFERENCE	STAGE HEIGHT	
PTA5-N/20	20 cm (8in)	
PTA5-N/40	40 cm (1ft 4in)	
PTA5-N/60	60 cm (1ft 12in)	
PTA5-N/80	80 cm (2ft 7in)	+5 cm (2 in) ADJUSTMENT
PTA5-N/100	100 cm (3ft 3in)	
PTA5-N/120	120 cm (3ft 11in)	
PTA5-N/140	140 cm (4ft 7in)	

REFERENCE	STAGE HEIGHT	
PTA6-N/20	20 cm (8in)	
PTA6-N/40	40 cm (1ft 4in)	
PTA6-N/60	60 cm (1ft 12in)	
PTA6-N/80	80 cm (2ft 7in)	+5 cm (2 in) ADJUSTMENT
PTA6-N/100	100 cm (3ft 3in)	
PTA6-N/120	120 cm (3ft 11in)	
PTA6-N/140	140 cm (4ft 7in)	

REFERENCE	FOR A PLATFORM HEIGHT
PTA5-T/20-25	Of 20 to 25 cm (8in - 9.8in)
PTA5-T/25-30	Of 25 to 30 cm (9.8in - 12in)
PTA5-T/30-40	Of 30 to 40 cm (12in - 1ft 4in)
PTA5-T/40-60	Of 40 to 60 cm (1ft 4in - 1ft 12in)
PTA5-T/50-80	Of 50 to 80 cm (1ft 8in - 2ft 7in)
PTA5-T/60-100	Of 60 to 100 cm (1ft 12in - 3ft 3in)
PTA5-T/70-120	Of 70 to 120 cm (2ft 4in - 3ft 11in)
PTA5-T/80-140	Of 80 to 140 cm (2ft 7in - 4ft 7in)
PTA5-T/90-160	Of 90 to 160 cm (2ft 11in - 5ft 3in)
PTA5-T/100-180	Of 100 to 180 cm (3ft 3in - 5ft 11in)
PTA5-T/110-200	Of 110 to 200 cm (3ft 7in - 6ft 7in)

REFERENCE	FOR A PLATFORM HEIGHT
PTA6-T/20-25	Of 20 to 25 cm (8in - 9.8in)
PTA6-T/30-40	Of 30 to 40 cm (12in - 1ft 4in)
PTA6-T/40-60	Of 40 to 60 cm (1ft 4in - 1ft 12in)
PTA6-T/50-80	Of 50 to 80 cm (1ft 8in - 2ft 7in)
PTA6-T/60-100	Of 60 to 100 cm (1ft 12in - 3ft 3in)
PTA6-T/70-120	Of 70 to 120 cm (2ft 4in - 3ft 11in)
PTA6-T/80-140	Of 80 to 140 cm (2ft 7in - 4ft 7in)
PTA6-T/90-160	Of 90 to 160 cm (2ft 11in - 5ft 3in)
PTA6-T/100-180	Of 100 to 180 cm (3ft 3in - 5ft 11in)
PTA6-T/110-200	Of 110 to 200 cm (3ft 7in - 6ft 7in)



REFERENCE	FOR A PLATFORM HEIGHT (Of - To)	
PTA5-D/20-25	20 - 25 cm (8 in - 9.8 in)	
PTA5-D/25-30	25 - 30 cm (9.8in - 12in)	
PTA5-D/30-40	30 - 40 cm (12in - 1ft 4in)	
PTA5-D/40-60	40 - 60 cm (1ft 4in - 1ft 12in)	
PTA5-D/50-80	50 - 80 cm (1ft 8in - 2ft 7in)	
PTA5-D/60-100	60 - 100 cm (1ft 12in - 3ft 3in)	<b>+5 cm (2 in) ADJUSTMENT</b>
PTA5-D/70-120	70 - 120 cm (2ft 4in - 3ft 11in)	
PTA5-D/80-140	80 - 140 cm (2ft 7in - 4ft 7in)	
PTA5-D/90-160	90 - 160 cm (2ft 11in - 5ft 3in)	
PTA5-D/100-180	100 - 180 cm (3ft 3in - 5ft 11in)	
PTA5-D/110-200	110 - 200 cm (3ft 7in - 6ft 7in)	

REFERENCE	FOR A PLATFORM HEIGHT (Of - To)	
PTA6-D/30-40	30 - 40 cm (12in - 1ft 4in)	
PTA6-D/40-60	40 - 60 cm (1ft 4in - 1ft 12in)	
PTA6-D/50-80	50 - 80 cm (1ft 8in - 2ft 7in)	
PTA6-D/60-100	60 - 100 cm (1ft 12in - 3ft 3in)	
PTA6-D/70-120	70 - 120 cm (2ft 4in - 3ft 11in)	<b>+5 cm (2 in) ADJUSTMENT</b>
PTA6-D/80-140	80 - 140 cm (2ft 7in - 4ft 7in)	
PTA6-D/90-160	90 - 160 cm (2ft 11in - 5ft 3in)	
PTA6-D/100-180	100 - 180 cm (3ft 3in - 5ft 11in)	
PTA6-D/110-200	110 - 200 cm (3ft 7in - 6ft 7in)	

PTA-D



REFERENCE	FOR A PLATFORM HEIGHT (Of - To)	
PTA5-P/30-40	30 - 40 cm (12in - 1ft 4in)	
PTA5-P/40-60	40 - 60 cm (1ft 4in - 1ft 12in)	
PTA5-P/50-80	50 - 80 cm (1ft 8in - 2ft 7in)	
PTA5-P/60-100	60 - 100 cm (1ft 12in - 3ft 3in)	<b>+5 cm (2 in) ADJUSTMENT</b>
PTA5-P/70-120	70 - 120 cm (2ft 4in - 3ft 11in)	
PTA5-P/80-140	80 - 140 cm (2ft 7in - 4ft 7in)	
PTA5-P/90-160	90 - 160 cm (2ft 11in - 5ft 3in)	
PTA5-P/100-180	100 - 180 cm (3ft 3in - 5ft 11in)	

REFERENCE	FOR A PLATFORM HEIGHT (Of - To)	
PTA6-P/30-40	30 - 40 cm (12in - 1ft 4in)	
PTA6-P/40-60	40 - 60 cm (1ft 4in - 1ft 12in)	
PTA6-P/50-80	50 - 80 cm (1ft 8in - 2ft 7in)	
PTA6-P/60-100	60 - 100 cm (1ft 12in - 3ft 3in)	<b>+5 cm (2 in) ADJUSTMENT</b>
PTA6-P/70-120	70 - 120 cm (2ft 4in - 3ft 11in)	
PTA6-P/80-140	80 - 140 cm (2ft 7in - 4ft 7in)	
PTA6-P/90-160	90 - 160 cm (2ft 11in - 5ft 3in)	
PTA6-P/100-180	100 - 180 cm (3ft 3in - 5ft 11in)	

PTA-P



# WHEELS & ACCESSORIES

## GUIL Mobility Accessories — Stages that move with you

GUIL mobility accessories allow platforms to be transformed into mobile platforms or movable stages, while maintaining stability and safety at all times. Designed to integrate directly into leg sockets or telescopic legs, they incorporate swivel wheels with brakes, enabling easy movement without damaging the floor.

### CQR



#### KIT OF 4 SWIVEL CASTORS WITH BRAKES

- Set of four reinforced steel adapters with  $\varnothing 100$  mm swivel nylon wheels with brakes, designed for TM300, TM440 and TM440XL platforms.
- Ref. **CQR/5 for 50x50 mm legs** and Ref. **CQR/6 for 60x60 mm legs**.
- Special wheels that protect the floor and allow smooth and safe movement.
- Direct use in the platform leg sockets, with no need for legs.
- Also compatible with 50 x 50 mm telescopic legs.
- A practical solution for moving platforms easily and with full control.

### PCR



#### SET OF 4 TELESCOPIC LEGS WITH CASTORS WITH BRAKES

- Set of four 50 x 50 mm telescopic legs, with reinforced steel adaptor, designed for TM300, TM440 and TM440XL platforms.
- Ref. **PCR/5 for 50x50 mm legs** y Ref. **PCR/6 for 60x60 mm legs**.
- Swivel wheels with brakes, designed to protect the floor.
- Transforms the platform into a transport trolley, mobile stage or drum riser.
- Millimetric telescopic adjustment between 40 and 45 cm to compensate for uneven surfaces, ramps or irregular floors.
- Manufactured from high-strength aluminium with reinforced profile
- Double height locking system: metal knob + M10 nut for maximum safety.
- A robust, practical and highly versatile solution for mobile installations.



## APF-2/5



### ADAPTOR FOR 2 LEGS TO ONE WHEEL WITH BRAKE

- Adapter with swivel wheel and brake for connecting two GUIL platforms
- Compatible with TM300, TM440 and TM440XL platforms.
- Special nylon wheel designed to protect the floor.
- Direct use in leg sockets and in 50 x 50 mm telescopic legs.
- Facilitates mobility and speeds up the assembly of mobile structures.
- Ideal for mobile stages, technical platforms and touring installations.

## APR-4/5



### ADAPTOR FOR 4 LEGS TO ONE CASTOR

- Adapter with swivel wheel for the simultaneous connection of four platforms
- Compatible with TM300, TM440 and TM440XL platforms.
- Special nylon wheel suitable for delicate floors.
- Direct use in leg sockets and in 50 x 50 mm telescopic legs.
- Allows four telescopic legs to be connected to a single wheel.
- When combined with APF-2/5 and CQR/5, it converts the platforms into a complete mobile stage system.

## RD/5

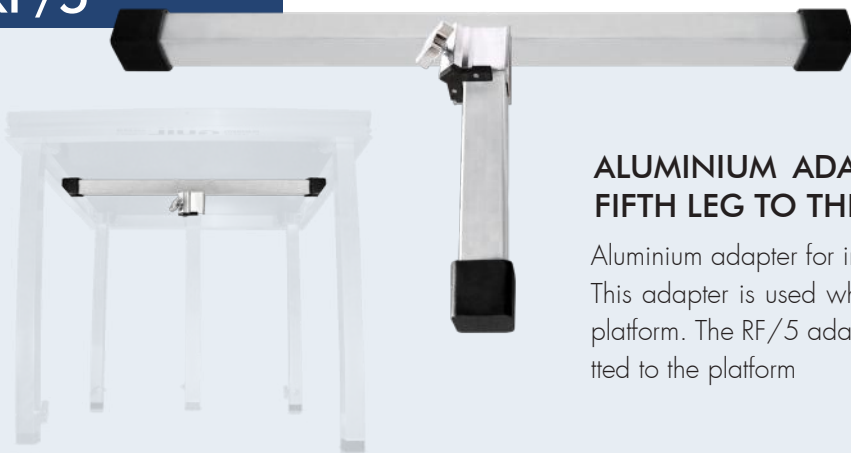


### ADAPTER FOR CONNECTING TWO PLATFORMS WITH A SINGLE LEG

Useful adapter for connecting two platforms using a single leg. The RD/5 connector is an ideal solution for faster stage assembly, allowing one leg to be used where two would normally be required.

- Compatible with TM300, TM440 y TM440XL platforms.

## RF/5



### ALUMINIUM ADAPTOR TO ATTACH A FIFTH LEG TO THE DECKS

Aluminium adaptor for installing a fifth leg on TM440 and TM300 platforms. This adaptor is used when the load is concentrated at a single point on the platform. The RF/5 adaptor is manufactured from aluminium and is pressure-fitted to the platform

# PLATFORM TRANSPORT

GUIL Transport and Storage Solutions — Efficiency, Organisation and Mobility

GUIL transport and storage solutions are designed to facilitate the movement, organisation and protection of platforms and accessories in professional environments. Each system optimises assembly and dismantling times, reduces physical effort and improves day-to-day logistics. Robust, manoeuvrable accessories designed for intensive use in auditoriums, hotels, theatres and touring productions.

## TM-AST/1

### HANDLES FOR STAGE DECKS, TO AID WITH MOVING AND STORING

Very useful set of handles so that 2 people can quickly and easily move a stage deck. The set consists of 2 handles (for both sides of the platform).

Our handles are a perfect option to move platforms from one place to another without any effort. Save time in your stage set-ups with our TM-AST handles!

The set of handles for GUIL platforms will aid with moving and storing, becoming an essential complement for all companies in this industry.

With a quick and easy set-up, these handles can be fitted to all our platform models with plugin legs. They just need to be inserted into our multifunctional deck rail, sliding it into the required position for a comfortable handling.



THE TM-AST/1 PLATFORM HANDLES CAN BE USED WITH ALL OUR INTERCHANGEABLE-LEG PLATFORM MODELS.



## TM-AST / 1

JUEGO DE ASAS PARA MOVER TARIMAS

TM-AST/1

► Set: **2 handles**

► Material: **Steel**

► Colour: **Black**

► Weight Net: **1,5 Kg**



The CRO-09 is a highly manoeuvrable trolley which allows one person to transport stage decks and set up a stage on their own, without having to carry each platform from storage to the set-up area.

This unique cart is invaluable in centres which use stage decks, but have only limited maintenance staff to move and assemble them. Ideal to be used in schools, town halls, hotels, etc.

The detachable handle can be fitted for right-handed or left-handed use, or facing down to save space when not in use.



THIS 2-WHEELED STEEL TROLLEY MAKES SET-UP AND TAKE-DOWN QUICKER AND LESS EFFORT, AS YOU DO NOT NEED HELP TO TRANSPORT THE STAGE DECKS TO THE SET-UP AREA.



### CRO-09

CARRO DE TRANSPORTE



CRO-09

▶ Net Weight: 14 Kg

▶ Material: Steel

▶ Colour: Black

▶ Wheels: 200 mm



Practical and manageable container specially designed to transport and store stage decks ref. TM300, TM440, TM440XL, TM440XXL and TM441. This reinforced structure, manufactured in steel with a black paint finish for outdoor use, has four removable pillars and can be transported with a forklift truck.

These CTO-05 containers can be stacked, thus reducing the barriers storage space. Note: Up to 3 containers can be stacked. Each container can store the following units:

- 10 units of TM300, TM440, TM440XL, TM440XXL Platforms.
- 5 units of TM441 Platforms

This versatile container offers the option to store and transport platforms in three different positions to suit your needs:

- Decks in flat/horizontal position
- Decks on edge position
- Decks in an upright/on end position (except TM441 platform)

For easier handling and manoeuvrability, this useful container can be converted into a trolley just by adding our set of four castors ref. CTR-03 (not included). CTR-03 consists of four swivel wheels of Ø 200 mm (rubber made with metallic rim for maximum resistance) provided with brakes and fitted with Ø 35 mm shafts to guarantee an effective connection to the container.



Ref. CTR-03

Set of four Ø200 mm swivel wheels with brakes.  
(Not included)



### CTO-05

- ▶ Maximum Load: **600 kg** ▶ Net Weight: **22 Kg**
- ▶ Material: **Steel** ▶ Colour: **Black**
- ▶ Measures: **1055 x 1165 x 1275 mm**
- ▶ Stackable & Removable: **Yes**



Its 6 wheels (4 swivelling and 2 static) manufactured in Nylon, allow it to turn on a centre axis meaning that it can be turned around in small spaces and giving it an easy manoeuvrability and allowing one person to move it easily.

Perfect for hotels or auditoriums where small temporary stages are constantly set-up and removed.



This practical trolley includes the following components

- 2 fixed wheels of  $\text{Ø}160 \times 50$  mm.
- 4 swivelling wheels of  $\text{Ø}160 \times 50$  mm (2 of them with brakes).
- 1 detachable manoeuvring handle
- 1 sling

**GUIL**



**CRO-11**  
CARRO PARA  
TRANSPORTAR TARIMAS



### CRO-11

- ▶ Maximum Load: **400 kg**
- ▶ Net Weight: **30 Kg**
- ▶ Measures: **800 x 1525 x 1230 mm**
- ▶ Colour: **Black**
- ▶ Folded Dimensions: **800 x 1525 x 300 mm**

Heavy-duty trolley to transport stage decks. It can be used with all our stage deck models: TM440, TM300, TM440XL, TM440XXL, TM441 y TM442XL.

This practical trolley includes the following components:

- ✓ 4 swivel wheels of Ø150 mm (2 with brakes).
- ✓ Steel frame finished in black anti-scratch powder paint.
- ✓ Detachable steel handle finished in black anti-scratch powder paint.
- ✓ Sling to secure the platforms.

Each trolley can transport the following quantities of decks:

- 14 units of TM440 Platforms
- 14 units of TM300 Platforms
- 13 units of TM440XL Platforms
- 13 units of TM440XXL Platforms
- 12 units TM442XL Platforms.
- 6 TM441 Platforms.



### CRO-10

- ▶ Maximum Load: **600 kg**
- ▶ Material: **Steel**
- ▶ Colour: **Black**
- ▶ Wheels: **Ø150 mm**
- ▶ Net Weight: **35 Kg**



This practical kit allows you to convert a standard platform into a trolley / cart.

This is a perfect accessory for hotels or auditoriums where small temporary stages are constantly set-up and removed.

The kit includes the following components:

- 4 wheels with reinforced ferrules (2 of them rigid and 2 swivelling with brakes).
- Handle/rail with connectors to secure it to the platform.
- Sling (nylon) to secure load.

> Ref. TM-TR1: Kit for TM440, TM300 y TM440XL platforms

> Ref. TM-TR2: Kit for TM442XL platforms



### TM/TR

- ▶ Maximum Load: **300 kg**
- ▶ Material: **Steel & Nylon**
- ▶ Colour: **Black**
- ▶ Wheels: **Ø100 mm**
- ▶ Net Weight: **11 Kg**

Aluminium safety guardrails designed for our platforms and grandstand stages. TMQ guardrails are equipped with an integrated chair stop and a reinforced central bar.

Note: The TMQ-2/N model, designed for 2-metre side sections, also incorporates an additional perpendicular bar. Our TMQ guardrails are supplied complete, including all the connectors required for installation. They are manufactured in three standard sizes.

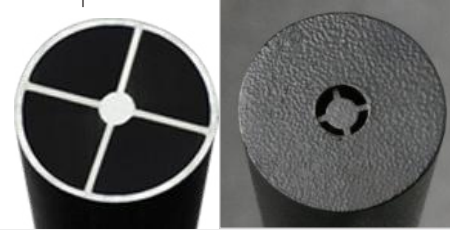


REFERENCE	TMQ-2/N	TMQ-1/N	TMQ-0,5/N
► For the sides of platforms & grandstands	2 m	1 m	0,5 m
► Measures (width x effective height)	192 x 110 cm	92 x 110 cm	42 x 110 cm
► Net Weight (without ANQ connectors)	4,90 Kg	2,50 Kg	1,80 Kg
► Net Weight (with ANQ connectors)	7,50 Kg	4,20 Kg	3,50 Kg
► Number of connectors to the platform	3 uds. (Ref. ANQ)	2 uds. (Ref. ANQ)	2 uds. (Ref. ANQ)
► Anchoring points to the platform	6	4	4
► Number of connectors between safety rails	1 connector ref. TMU-06 included		
► Chair Stop	Yes		
► Material	Aluminium (With internal reinforcing ribs)		
► Colour	Negro (black powder coat finish)		



**MADE IN ALUMINIUM:** Our multipurpose guardrails are manufactured in reinforced aluminium (with internal ribs) with black powder coat finish. All the edges of the TMQ guardrails are rounded to prevent injuries to the audience and guarantees public safety and comfort at all times (there are no sharp edges).

THE TMQ RAILS ARE THE PERFECT OPTION!  
With internal reinforcements but at the same time very light, no rusting, giving it a professional and stylish look



CHAIR STOP INTEGRATED



ANQ CONNECTOR



**GUARDRAILS WITH INTEGRATED CHAIR STOP:** All our TMQ versions have an integrated chair/wheel stop to prevent legs of chairs or wheels from sliding off the edge of the stage or from slipping between levels of tiered platforms.

**ANCHORING TO THE PLATFORMS:** Each TMQ guardrail is supplied with ANQ reference metal connectors, which are fixed to the platform using two double fixing plates (no plastic parts are used).

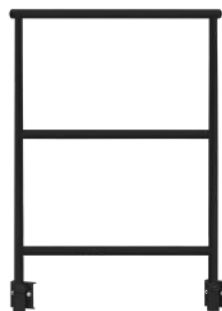
These plates are inserted into the platform profile, leaving the entire platform surface free and allowing them to be positioned at any required point along the frame slot. The ANQ anchoring system includes an internal plate that prevents marking the guardrail while also ensuring a firm and secure attachment.

**SAFETY RAIL TO SAFETY RAIL CONNECTOR:** Each TMQ Safety rail is provided with a reinforced connector, ref. TMU-06 to join them to each other. These connectors are made in steel and their fastening system guarantees easy and safe installation. Their special design allows users to attach safety rails placed at different angles (corners) if needed..

Ref. TMQ-02/N



Ref. TMQ-01/N



Ref. TMQ-0.5/N



TMU-06 CONNECTOR



**Guardrails are a safety accessory and must be firmly anchored** to ensure they fulfil their function in any installation in which they are used, such as:

**STAGES, GRANDSTANDS, RAMPS, ETC...**

**TRANSPORT & STORAGE:** TMQ guardrails can be transported and stored conveniently and easily using our **CRO-12 trolleys**. The trolley can accommodate up to 48 linear metres of TMQ-2/N, TMQ-1/N and TMQ-0.5/N guardrails, or a combination of all three models.



48  
LINEAR  
METERS

Its special design allows it to rotate on its own axis (360°), facilitating handling by a single operator and providing full mobility, even in confined spaces.

### CRO-12

- ▶ Wheels: Ø100 mm - Material: Steel - Net Weight: 37 Kg
- ▶ Measures: 915x2000x1500mm (Base: 900x2000 mm)



Strengthening brace for the sides of GUIL platforms to be used for fixed height and telescopic legs. This additional accessory is designed to reinforce stages that are higher than 1 m which guarantees extra strength and stability.



These useful strengthening braces can be used in both a horizontal and diagonal position and include all connectors to fix them to the legs.

Our strengthening braces, with an easy and quick assembly, are suitable for use with the following platform references: TM440, TM300 and TM442XL.

The ART-02/A strengthening braces are made with rectangular steel bars and are finished in a textured, black, anti-scratch powder coating to guarantee maximum durability and resistance.

**ART-01/A:** For 1 m side section

**ART-02/A:** For 2 m side section



## ART

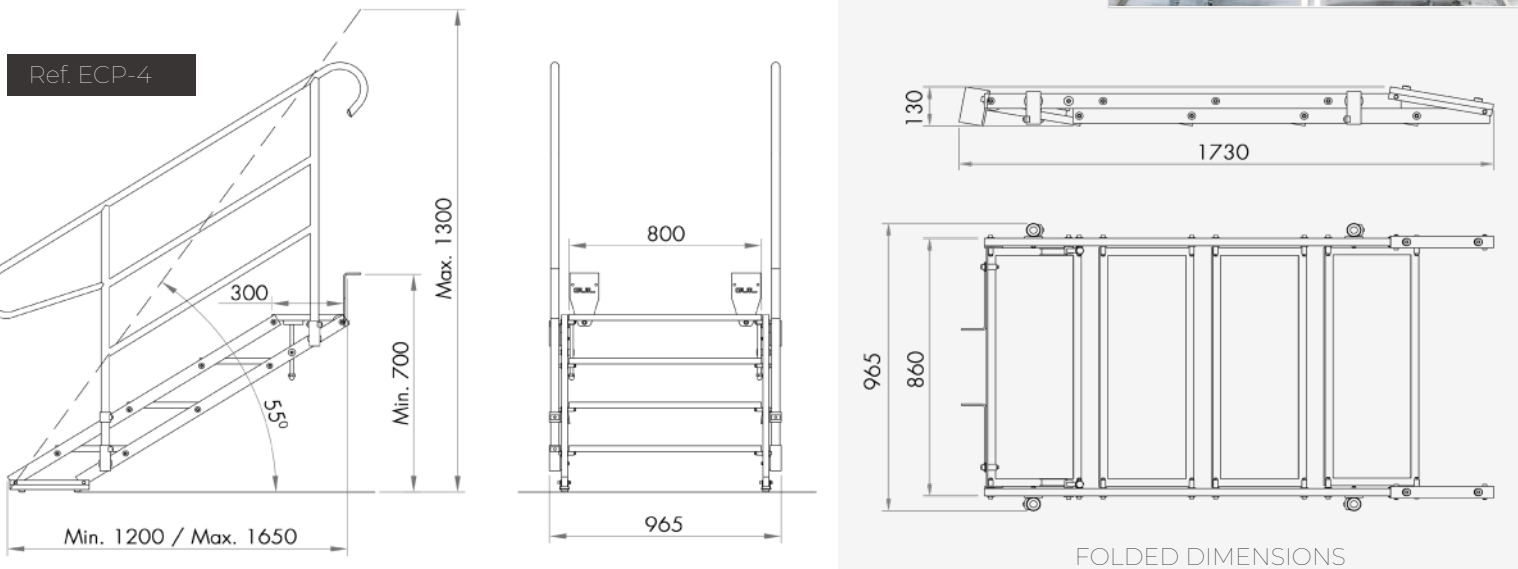
- ▶ To be used with: **Fixed height & telescopic legs**
- ▶ Position: **Horizontal & Diagonal positions**
- ▶ Material: **Steel**
- ▶ Net Weight: **ART-01/A: 2,5 Kg / ART-02/A: 3,95**



The ECP staircase is manufactured in two versions:

- Ref. ECP-4: 4 steps to be used on stages from 70 to 130 cm high (Net Weight: 36 Kg)
- Ref. ECP-6: 6 steps to be used on stages from 90 to 180 cm high (Net Weight: 48 Kg)

If the event requires wider steps, two stair units can be installed side by side.



**INDOOR AND OUTDOOR USE:** Our ECP stairs are made in aluminium, both the reinforced structure and the steps and handrails, which prevents them from rusting.

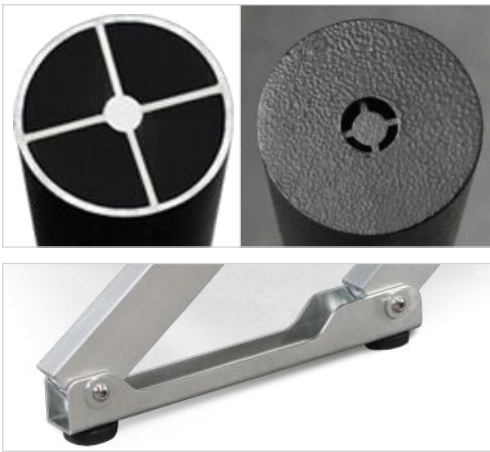
**QUICK & EASY SET-UP:** The same staircase can be used for stages from 70cm to 130cm in height, simply by adjusting the inclination of the steps and regulating them with the fixing system.

**STEPS:** The ECP-4 & ECP-6 adjustable staircases are composed of four reinforced steps of 300x800mm, each one made of aluminium with anti-slip diamond plate surface.

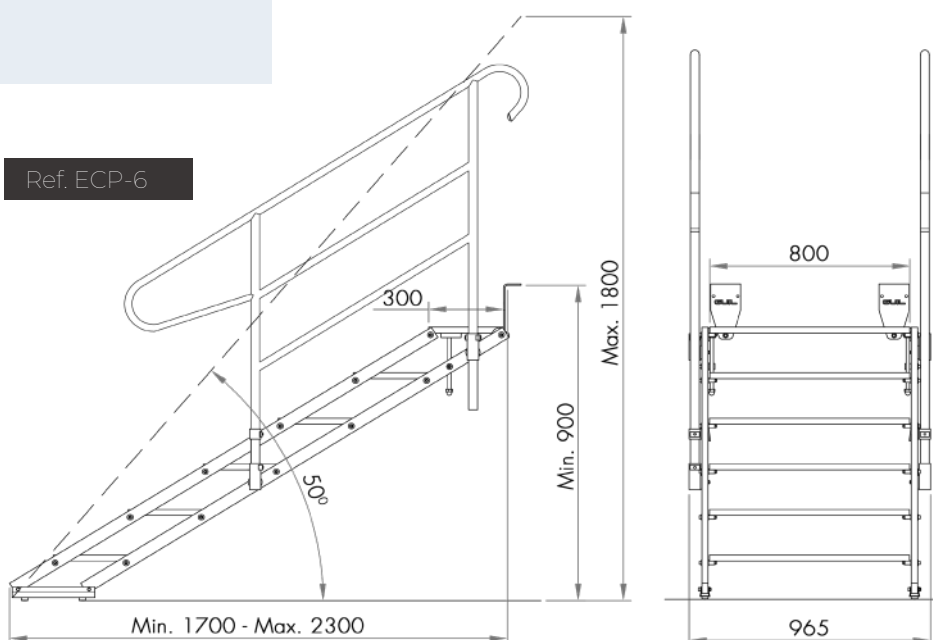
**HANDRAIL:** The staircase includes a set of handrails (Ref. PSA-05) made of **Ø 35 mm tube** with internal cross-shaped reinforcement, made of high-strength aluminium and finished in black powder paint..

Its design with two horizontal bars guarantees greater safety for the users. The handrails are supplied with six connectors to attach them to the staircase structure, including an inner plate to avoid marking the rails and to make them last longer.

**CONNECTORS:** The staircase is attached to the stage deck with two reinforced steel plates fastened with two screws each to the continuous rail slot on the frame, securing it perfectly to the stage.



Its **foldable design** and reinforced aluminium structure make our staircase highly resistant while remaining lightweight and compact, allowing for easy transport and storage.



FOLDED DIMENSIONS

Ref. ECP-6

Strengthened access stair manufactured in 100% aluminium with a non-slip (diamond plate) top surface, consisting of detachable steps and legs and connectors to join the steps together and fasten them to the stage.

**FOR INDOOR AND OUTDOOR USE:** ECD stairs are manufactured entirely in aluminium, which guarantees great durability and offers a professional design.



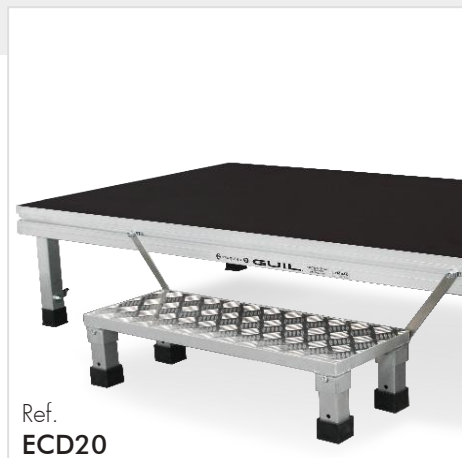
Ref.  
ECD20-80



DETACHABLE LEGS

**MODULAR STEPS:** Steps of 30 x 80 cm, made from heavy-duty aluminium with non-slip diamond plate pattern.

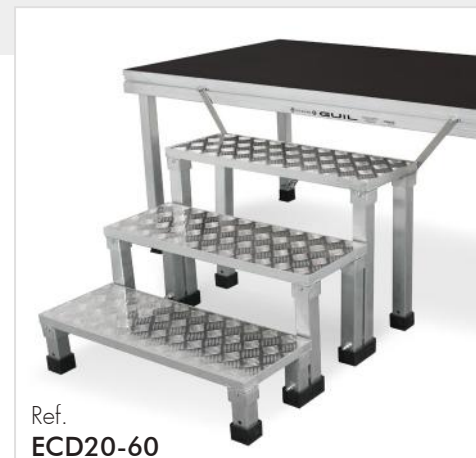
**EASILY TAKEN APART:** Designed to be taken apart for easy storage, which also allows different kinds of legs to be used, depending on the nature of each event.



Ref.  
ECD20



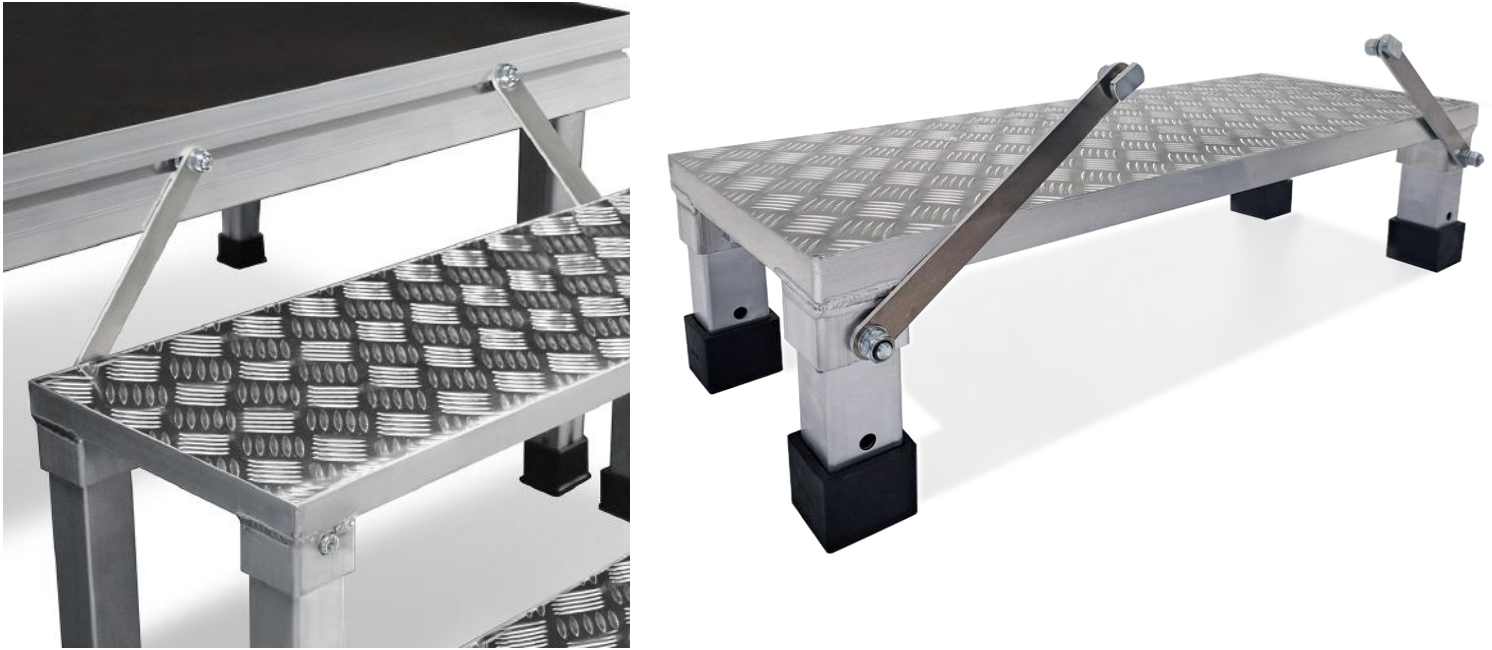
Ref.  
ECD20-40



Ref.  
ECD20-60

## CONNECTORS:

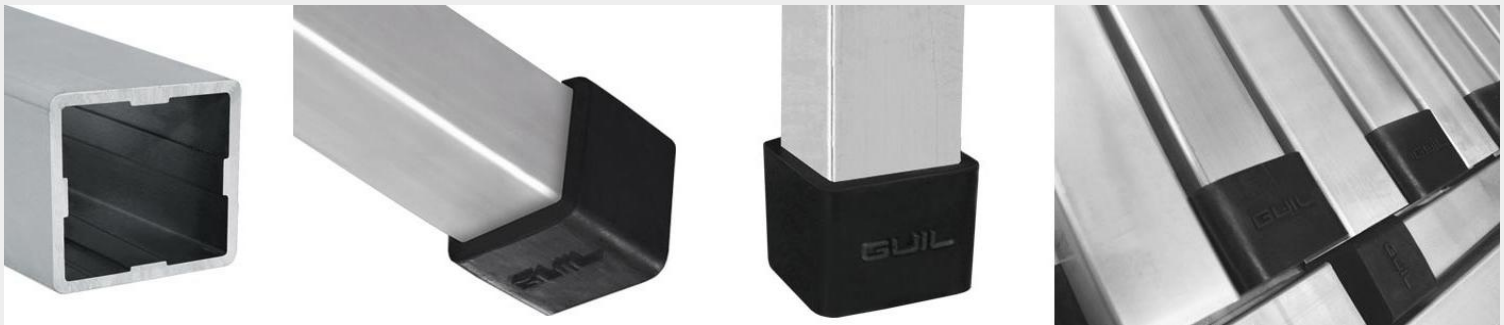
Each ECD Step is supplied complete with the connectors needed to attach the step to the stage and nuts and bolts to fix the steps to each other.



## ALUMINIUM LEGS:

Interchangeable fixed-height legs in heavy-duty aluminium with a reinforced 50x50mm profile and four 4mm internal nerves.

The legs have an outsize rubber foot that prevents slipping and guarantees a perfect grip on any surface.



The ECD's modular system allows as many steps as necessary to be used, depending on the height of the stage to be set up, as well as placing one step next to another to make wider stairs. We manufacture 5 standard models of stairs:

REFERENCE	STAIR HEIGHT	Nº OF STEPS	FOR STAGES WITH HEIGHT OF	NET WEIGHT
ECD20	20 cm	1	40 cm	6,25 Kg
ECD20-40	40 cm	2	60 cm	13,30 Kg
ECD20-60	60 cm	3	80 cm	21,50 Kg
ECD20-80	80 cm	4	100 cm	31,00 Kg

Stair for stages, consisting of steps made of aluminium and 100% birch plywood. The ECT stage stair combines design, strength and light construction, providing a professional appearance in the same finish as the stage, as it is made of the same materials as the platforms.

**INDOOR & OUTDOOR USE:** Thanks to their aluminium structure and weather-resistant board, the ECT stairs are a perfect option for events both indoors and outdoors.



**MODULAR STEPS** of 30 x 80 cm **with a non-slip surface**, manufactured with a robust aluminium frame (alloy EN AW 6063 80-T6) with a continuous rail design which allows accessories such as handrails, skirting or coverings to be fitted quickly and easily and 15mm-thick 100% birch phenolic plywood board with sealed edges.

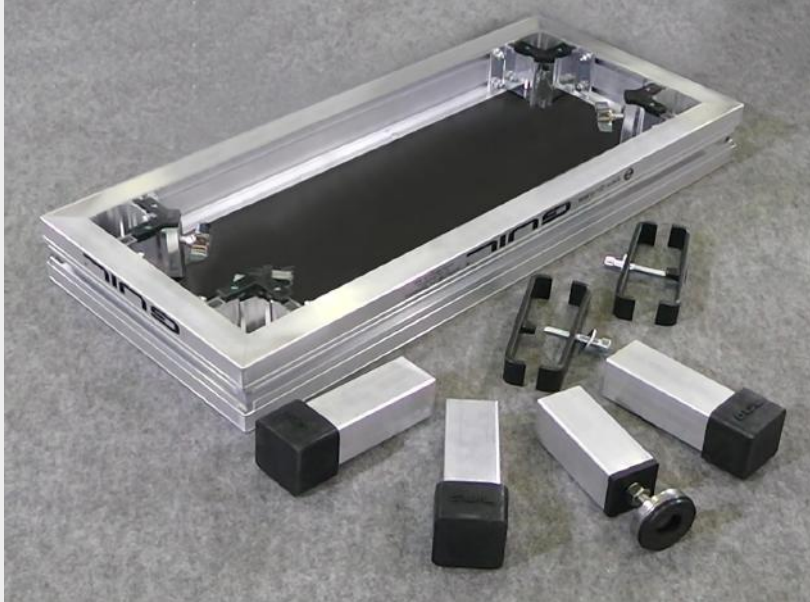
The panels, composed of birch veneer layers stuck together with phenolic resin, are treated with fire- and water-resistant (**not waterproof**), substances as well as against commonly used chemical products.

REF.	STAIR HEIGHT	STEPS	STAGES	WEIGHT
ECT20	20 cm	1	40 cm	11 Kg
ECT20-40	40 cm	2	60 cm	23 Kg
ECT20-60	60 cm	3	80 cm	37 Kg
ECT20-80*	80 cm	4	100 cm	51 Kg
ECT20-100*	100 cm	5	120 cm	65 Kg



**ALUMINIUM LEGS:** Each step is provided with 4 detachable legs: three fixed-height legs with rubber non-skid terminals, and one leg with a leveller screw to adjust for possible irregularities underfoot (ramps, uneven terrain, etc).

The legs are made of aluminium with a 50 x 50 mm section, with four 4mm internal veins and rounded corners.



**HANDRAIL\*:** ECT stairs of 4 or more steps are supplied with two quick-fastening handrails (Ref. PSA-06), manufactured in reinforced aluminium finished in black powder paint, and 4 connectors (Ref. ANQ) to fasten them to the stairs.

**CONNECTORS:** ECT stairs are supplied with all the fastening elements necessary to ensure 100% safe assembly:

- 1 fastening system (Ref. AN-ECT) to attach the stairs to the stage.
- Leg connectors (Ref. TMU-07) to join the steps by two of their legs. ECT20-40: 2 units / ECT20-60: 4 units / ECT20-80: 6 units / ECT20-100: 8 units.

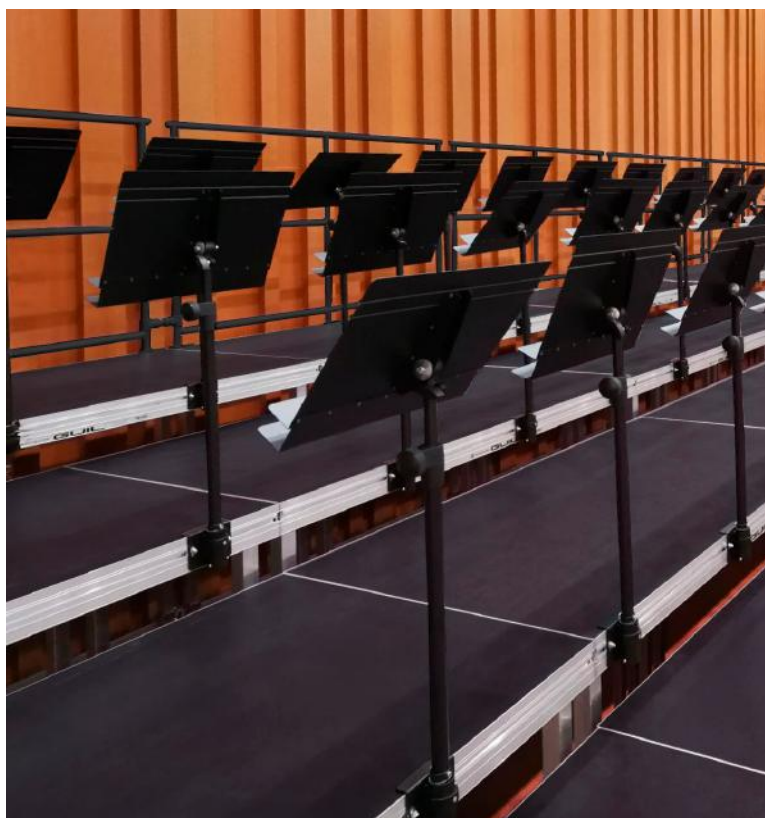
The ECT's modular system allows as many steps as necessary to be used, depending on the height of the stage to be set up, as well as placing one step next to another to make wider stairs. We manufacture 5 standard models of stairs:

**CUSTOMISABLE:** ECT stairs are totally customisable. We manufacture steps of any size (length and depth), we can modify the height of the legs, paint the structure in any colour as required, we can even make the steps with transparent methacrylate panels if backlighting is desired, to give a more spectacular effect to the entrance to and exit from the stage.

Please contact our technical department to request a quotation for special dimensions and/or heights.



Atril de altura regulable con adaptador para su fijación al perfil de cualquiera de nuestras tarimas. Con este atril especial para tarimas se evita la base de un atril convencional, dejando toda la superficie de la tarima disponible para el usuario.



This practical mic. stand can be fitted to any of our platforms by attaching it to their multifunctional rail. It slides along the platform profile so it can be positioned wherever you need it.

Height-adjustable lectern with an adapter for fixing it to the profile of any of our platforms. This special platform lectern eliminates the need for a conventional lectern base, leaving the entire platform surface free for the user.



The AT/TM-01 music stand can be used at the same time as the mic. stand for platforms ref. PM/TM-01; both are very practical accessories for any kind of event that is carried out in a reduced space, with a small platform/stage.

### SPECIFICATIONS AT/TM-01

- ▶ Adjustable Height: **83,5 cm - 150 cm**
- ▶ Desk Dimensions: **47 x 35 x 5,5 cm**
- ▶ Double shelf: **Yes** - Connector: **Included**
- ▶ Net Weight: **3,73 Kg** - Material: **Steel**
- ▶ Colour: **Black**



MICROPHONE STAND  
100%  
INTEGRATED  
100%  
SPACE AVAILABLE

Microphone stand with boom arm and adaptor to secure it to GUIL stage platforms.

This practical mic. stand can be fitted to any of our platforms by attaching it to their multifunctional rail. It slides along the platform profile so it can be positioned wherever you need it.

This mic. stand for platforms is manufactured in steel and finished with a textured, black, anti-scratch paint.

**The mic. stand is adjustable in height using a metallic locking system and has a telescopic boom arm with double thread fittings (3/8" and 5/8").**

The PM/TM-01 microphone stand can be used at the same time as the music stand for platforms ref. AT/TM-01; both are very practical accessories for any kind of event that is carried out in a reduced space, with a small platform/stage.

**PM/TM-01**

- ▶ Adjustable Height: **75 cm - 140 cm**
- ▶ Boom Arm: **49 cm - 87 cm** - Thread: **3/8" y 5/8"**
- ▶ Weight Net: **2,29 Kg** - Material: **Steel** - Colour: **Black**



TELESCOPIC SPEAKER STAND WITH CONNECTOR TO FASTEN IT TO THE FRAME OF OUR PLATFORMS

Telescopic speaker stand (type ref. alt-34 – without legs-) with connector to fasten it to the frame of our platforms.

**Practical metallic music stand that can be fitted to any of our platforms (any version or size) by attaching it to their multifunctional rail.**

The ALT/TM-01 speaker stand can be used at the same time as the mic. stand ref. PM/TM-01 and the music stand ref. AT/TM-01; both are very practical accessories for any kind of event that is carried out in a reduced space, with a small platform/stage.

It is equipped with double safety locking system by means of pressure knob and safety bolt (locking pin), offering maximum durability and resistance. They are fitted with an anti-vibration ring.

With this adaptor there is no need for the conventional base of the music stand which takes up space. This product leaves the who-

#### ALT/TM-01

- ▶ Adjustable Height: **127 cm - 207 cm**
- ▶ Maximum Load: **50 Kg** - Net weight: **4,60 Kg**
- ▶ Top tuber diameter: **Ø 35 mm**
- ▶ Material: **Steel** - Colour: **Black**



SPEAKER STAND  
100%  
INTEGRATED  
100%  
SPACE AVAILABLE



Ref. FLD-01



Ref. FLD-01/N



Connectors to attach any type of wood panel or other skirting to platforms. It can be used with all GUIL platforms and DJ tables

These practical adapters, quick and easy to assemble, slide along the platform profile and are fixed to the cladding by means of an ergonomic metal knob (FLD-01 and FLD-01/N) or a cap nut (FLD-02), allowing them to be positioned at the required platform height. They are the perfect alternative to using Velcro on platforms.

Sometimes you need to use a skirting that isn't made of fabric and due to its heavy weight, it couldn't be attached using Velcro, but with our FLD-01 adaptor both lightweight (fabric, canvas etc.) and heavy-weight (methacrylate, wooden panels, metal sheets etc.) skirting can be used.

Accessory for fixing LED screen modules.  
FLD-03



Ref. FLD-02



## LED SCREEN ADAPTOR



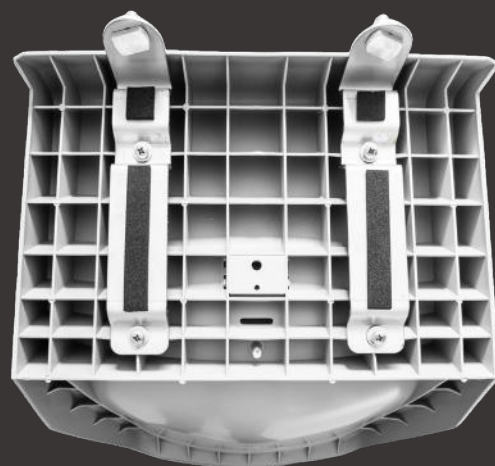
Ref. FLD-03

Seat with high back to convert any GUIL platform into a grandstand or tiered seating.

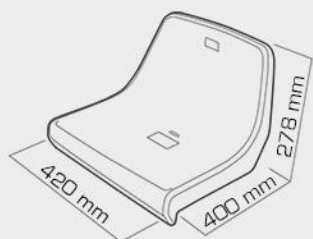
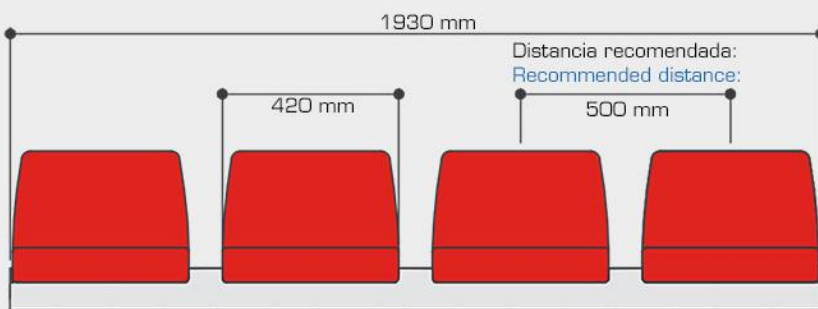
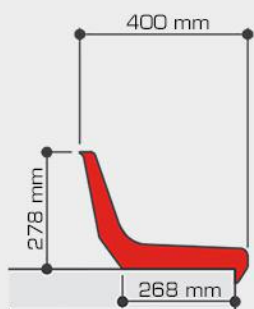
This practical accessory gives maximum functionality to your platforms, as with our seats, your platforms can also be used as tiered seating platforms for sport venues, parades, entertainment venues, saving saving on costs and storage space.

The seat includes stainless steel connectors to secure them to the rail profile of the platform. This type of connection permits each singular seat to be spaced as required, to adapt to the requirements of the specific setup; the distance between the seats can be bigger or smaller as required

Note: The minimum recommended distance between the centre of one seat to the centre of the next is 50 cm.



ANCHORING SYSTEM WITH 2 STAINLESS STEEL CONNECTORS



Chair/wheel stop to prevent legs of chairs or wheels from sliding off the edge of the stage or from slipping between levels of tiered platforms.



This practical safety barrier is manufactured in reinforced aluminium which guarantees maximum durability; no rusting or flaking of paint, giving it a professional and stylish look.

The BTA-01 chair and wheel stop is inserted into our multifunctional deck rail, giving the option to slide it into the required position. They can be fitted to all our platform models and are secured using three fixing points with ergonomic metallic knobs (included), guaranteeing maximum strength.



#### BTA-01

- ▶ Measurements: 16 x 180 x 980 mm
- ▶ Measurements w/knob: 42 x 180 x 980 mm
- ▶ Thickness: 3 mm
- ▶ Net Weight: 1,72 Kg
- ▶ Material: Aluminium
- ▶ Height above the deck: 75 mm

# PLATFORMS WITH WHEELS FOR DRUM-KITS

MODULAR PLATFORMS WITH WHEELS FOR DRUM KITS. SUPPLIED COMPLETE WITH ALL COMPO-

The **TMB440-F** and **TMB440** drum platforms are designed to provide a firm, safe and versatile platform, capable of withstanding the intensity of live performances and the technical demands of professional musicians.



Both models share the same purpose: to ensure stability and mobility on stage, offering two different solutions depending on the requirements of each setup:

- The **TMB440-F** features integrated wheels and a fixed height of 24 cm, making it ideal for quick movements and fast set changes..
- The **TMB440** is equipped with height-adjustable telescopic aluminium legs (ref. **PTA5-T/40-45/RD**) and wheels with brakes (total height from **40 to 45 cm**), allowing uneven surfaces of up to 5 cm to be compensated for without compromising stability.

Manufactured from **high-strength aluminium** and birch phenolic panel, both models combine the robustness required to absorb vibrations with the lightweight design and ease of assembly demanded by dynamic stage environments.

Available in **2 x 2 m** and **3 x 2 m** sizes, both versions adapt to different stage spaces and configurations..

*“Two versions, one essence: precision, stability and performance in any rhythm or stage.”*



## TMB440-F

### ► Standar Measuremets

- Ref. **TMB440-F/2x2**: 200×200 cm (Net Weight: **95 Kg**)
- Ref. **TMB440-F/3x2**: 300×200 cm (Net Weight: **142**)

### ► Use: **Both indoor and OUTDOOR**

### ► Material: **Alluminium (EN AW 6063 80-T6)**

- Wood: **100% Birch of 21 mm thickness**
- Wheels with brake: **Ø100 mm (Nylon/gray & Steel)**
- Fixed Height: **24 cm**
- Maximum Load: **1200 kg/m<sup>2</sup>**





## STRENGTH & DURABILITY

Each modul (ref. **TM440**, de 2x1 m) is manufactured in **high-resistance aluminium** and **21mm-thick phenolic birch plywood panels**, are certified to bear a distributed load of up to **1200 kg/m<sup>2</sup>** to be used outdoors.

## MOBILE PLATFORM

Both models incorporate adapters with **swivel wheels and brakes** at all four corners, which are inserted directly into the platform leg sockets, facilitating set changes without the need to dismantle the equipment.

The **TMB440** can be converted into a **TMB440-F** by removing the telescopic legs and leaving only the wheel bushings in place.

## SECURITY

Designed to support the **weight** and **force** exerted by the drummer during performance, their reinforced structure ensures a firm, safe and stable base.

Vibration control minimises risks and ensures a focused, smooth performance.

## OUR TMB440-F MOBILE DRUM PLATFORMS ARE SUPPLIED COMPLETE WITH ALL REQUIRED COMPONENTS.

### Ref. **TMB440-F/2x2**

2 x 2 m Drum platform with wheels

- 2 x platforms 2x1 m. ref. TM440/2x1
- 2 x Connectors ref. TMU-01
- 2 x Connectors ref. TMU-02
- 1 x kit of 4 adaptors with wheels ref. CQR/5
- 2 x Adaptors wheels with brake ref. APF-2/5

### Ref. **TMB440-F/3x2**

3 x 2 m Drum platform with wheels

- 3 x Platforms de 2x1 m. ref. TM440/2x1
- 3 x Connectors ref. TMU-01
- 3 x Connectors ref. TMU-02
- 1 x kit of 4 adaptors with wheels CQR/5
- 4 x Adaptors wheels with brake ref. APF-2/5

At any time, the TMB440-F/2 x 2 platform can be converted into a TMB440/2 x 2 by adding eight telescopic legs, ref. PTA5-T/40-45/RD, thus providing a mobile drum platform with height adjustment from 40 to 45 cm from the floor.



## ACOUSTIC SOUNDPROOFING

To prevent **unwanted resonances**, the contact surfaces between the frame and the panel are **damped**.

The panel is fixed using **high-bond foam**, **stainless steel screws** and **silicone**, creating a solid surface **free from noise and vibrations**.



**TMB440/2X2**  
2 x 2 m

## INDOOR & OUTDOOR USE

Thanks to their aluminium structure and weather-resistant panel, the **TMB440-F** and **TMB440** platforms are a reliable solution for any environment.

## FIRE-RETARDANT TREATMENT

The phenolic panel features a fire-retardant treatment and complies with fire classification B-s1, ensuring the highest safety standards in professional venues.

## TRANSPORT & STORAGE

Its lightweight, demountable design facilitates transport and storage while maintaining excellent structural strength.



**TMB440/3X2**  
3 x 2 m

### TMB440

#### ▶ Standar Measurements:

- Ref. **TMB440/2x2**: 200×200 cm (Net Weight: 100 Kg)
- Ref. **TMB440/3x2**: 300×200 cm (Net Weight: 150 Kg)

▶ Use: **Both indoor and OUTDOOR**

▶ Material: **Alluminium (EN AW 6063 80-T6)**

- ▶ Wood: **100% Birch of 21 mm thickness**
- ▶ Wheels with brake: **Ø100 mm (Nylon/gray & Steel)**
- ▶ Adjustable Height: **From 40 to 45 cm**
- ▶ Maximum Load: **1200 kg/m<sup>2</sup>**



**The stability of a fixed stage, with the freedom to move to the rhythm of the music.**



### CUSTOMISABLE

As manufacturers, we offer the possibility of painting the frame and legs according to the customer's requirements, as well as combining modules and wheels to create unique configurations. Please consult our sales department for further information.

### ENVIRONMENTAL COMMITMENT

The panels used are **FSC** and **PEFC certified**, ensuring their origin from **sustainably managed forests** and offering customers a responsible choice.

## OUR TMB440 MOBILE DRUM PLATFORMS ARE SUPPLIED COMPLETE WITH ALL REQUIRED COMPONENTS

Ref. **TMB440/2x2** 2 x 2 m Drum platform with wheels  
(millimetre-by-millimetre height adjustment from 40 cm to 45 cm)

- 2 x platforms 2x1 m. ref. TM440/2x1
- 2 x 2 x Connectors ref. TMU-01
- 2 x Connectors ref. TMU-02
- 1 x Kit ref. PCR/5
- 2 x kit adaptors with wheels ref. APF-2/5
- 4 x telescopic legs PTA5-T/40-45/RD

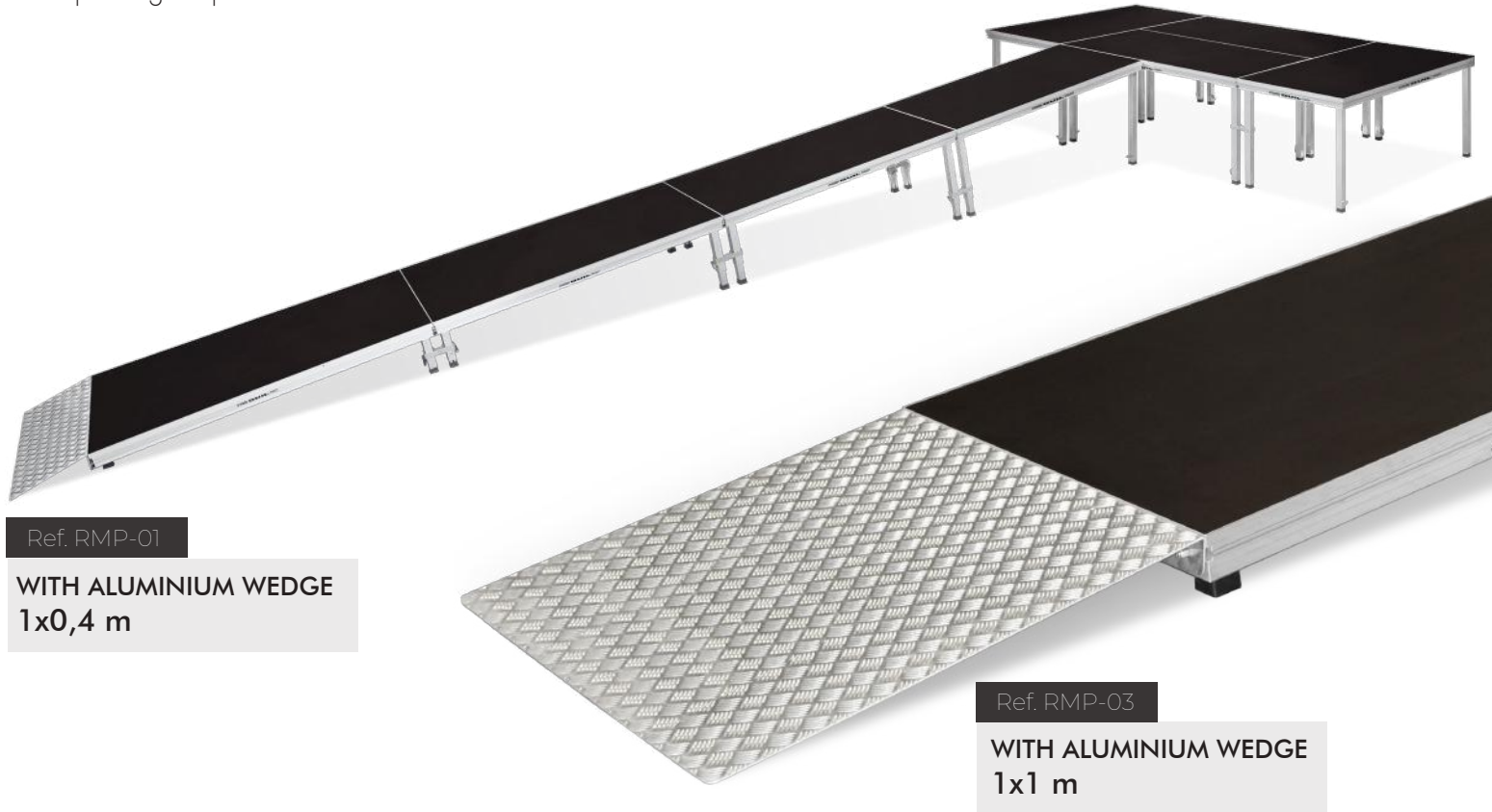
Ref. **TMB440/3x2** Drum platform with wheels  
(millimetre-by-millimetre height adjustment from 40 cm to 45 cm)

- 3 x Platforms de 2x1 m. ref. TM440/2x1
- 3 x Connectors ref. TMU-01
- 3 x Connectors ref. TMU-02
- 1 x Kit ref. PCR/5
- 4 x kit adaptors with wheels ref. APF-2/5
- 8 x telescopic legs PTA5-T/40-45/RD

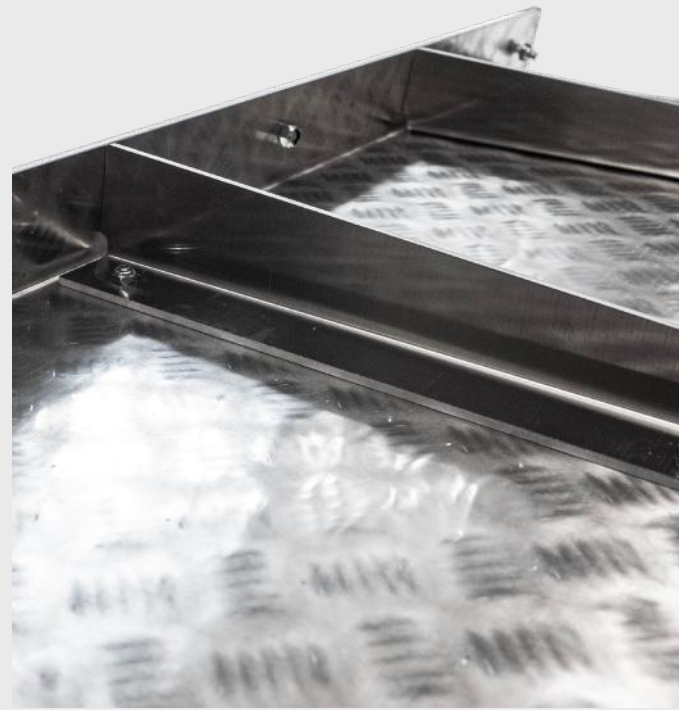
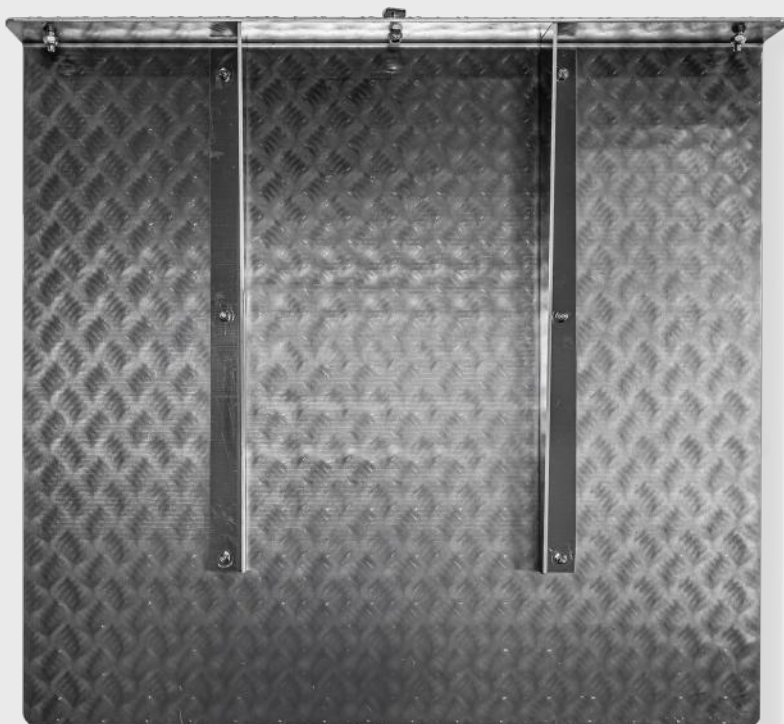


**GUIL RMP-01 and RMP-03 ramp kits** allow safe and stable ramps to be created using the same TM300, TM440 and TM440XL platforms employed on stage. Their modular design optimises costs, reduces assembly times and minimises the space required for transport and storage.

Thanks to the versatility of the GUIL platform system, ramps can be configured in different lengths and gradients, adapted to various stage heights. Each ramp consists of platforms equipped with telescopic legs, connected using the system's standard connectors and the corresponding ramp kit.



**THE RAMP PLATES**, manufactured from anti-slip aluminium, incorporate two internal ribs that increase their structural capacity and provide a higher level of safety and stability during use.



The **RMP-01** is designed for general-purpose technical ramps, such as load access, personnel circulation or connections between different stage levels, providing a robust and functional solution..

The **RMP-03** is specifically designed for the creation of accessible ramps for people with reduced mobility, facilitating safe access in compliance with accessibility requirements

Both kits are suitable for indoor and outdoor use and are designed **for stage heights ranging from 80 to 120 cm** (other dimensions available upon technical consultation). For the most appropriate configuration in accordance with regulations and project requirements, please contact GUIL's technical department.

**Ramp assembly kits for stages with heights ranging from 80 to 120 cm. Includes the following elements::**

- **1 Aluminium diamond plate starter ramp.**  
**RMP-01:** 1x0,4 m - Net Weight: 6,5 Kg - **RMP-03:** 1x1 m - Net Weight: 13,5 Kg
- **2 Two frame clamp connectors made in stainless steel ref. TMU-02.** Peso Neto: 0,66 Kg / 2 unidades
- **2 Two fixed aluminium legs(50 x 50 mm)** for the platform that is located next to the diamond plate starter ramp. Net Weight: 0,28 Kg / 2 unidades.
- **2 Two special telescopic, angle adjustable aluminium legs** for the platform that is located next to the stage. Net Weight: 5,64 Kg / 2 unidades.



**2 FRAME CLAMP CONNECTORS Ref. TMU-02**



**2 TELESCOPIC ANGLE ADJUSTABLE ALUMINIUM LEGS**



**2 FIXED ALUMINIUM LEGS**

