

The logo for 'ambic' features the brand name in a bold, white, sans-serif font. The letters are partially overlaid by a stylized graphic of yellow and black diagonal stripes that suggest movement or energy.

LABORATORY CATALOGUE



BRITISH MADE
BUILT TO LAST

Contact Us

Ambic Manufacturing

Ambic House

Stella Gill Industrial Estate

Pelton Fell, Chester-le-Street

County Durham

DH2 2RN

Tel: 0191 389 1888

Email: sales@ambicmanufacturing.com

Visit us at:

www.ambiclaboratories.com

www.ambicmanufacturing.com

www.ambiceducational.co.uk

www.ambicdoorsets.com

Social Media:

www.linkedin.com/company/ambicmanufacturing/

www.instagram.com/ambicmanufacturing/

www.facebook.com/ambicman/

Contents

Introduction	1
Who we are	1
Our Capabilities	2
Our Process	3
Ambic Laboratories	4
Ambic Standard Laboratories	4
Worktops & Upstands	4
Ambic STEM Lab	4
Ambic Commercial Grade Lab	4
Ambic Commercial Grade Plus Lab	4
Ambic Bespoke Laboratories	5
Laboratory Features	6
Laboratory Furniture	7
Standard Mobile Under Bench Units	7
Standard Fitted Under Bench Units	9
Standard Fitted Tall and Wall Units	11
Fitted Lab Bench	13
Mobile Lab Bench	15
Wall Mounted Shelving	17
Reagent Shelving	19
Writeup Desk	21
Lockers	23
Height Adjustable Bench	25
Finishing Items	27
Laboratory Gas Taps	28
Lab Accessories	28
Laboratory Water Taps	29
Laboratory Specialist Taps & Accessories	30
Laboratory Cabinet Handles	31
Laboratory Cabinet Castors	32
Laboratory Cabinet Feet	33
Laboratory Waste, Overflow & Traps	34
Appendices	35
Standard Cabinetry Colours Ranges	35
Lab Specification Table	36
Glossary	37
Glossary	38
Common Acronyms / Abbreviations	39

Who we are

Ambic Laboratories is part of Ambic Manufacturing Ltd, based at our own purpose built, state of the art factory in County Durham (Chester Le Street). We have over 30 years of trading experience in the design, manufacture and installation of bespoke furniture in many fields.

Ambic's ethos is quite simple; we are genuine people making quality furniture. We are known for making furniture that is engineered to last and we most certainly do not back down from a challenge.

We work extensively with individuals, designers, contractors, architects and other businesses to design, manufacture and install your furniture seamlessly. We are also FF&E procurement specialists so if we can't make it in house, then we will have a partner who can.

Full turnkey project solutions available!



Our Capabilities

- 1 MIG WELDING - MILD STEEL**
 We can also MIG & TIG other metals such as aluminium, stainless steel etc.
- 2 TWO OF OUR FIVE CNC WOODWORKING CNCs**
 These machines are capable of cutting and profiling most non-metallic substrates.
- 3 POWDERCOATING BOOTH**
 Anything metallic we tend to powdercoat for durability. We can also chemical strip and media blast to refurb older items needing a refresh.
- 4 CNC TUBE BENDER**
 Tube up to 2" diameter can be bent into almost any shape. Other sizes can be formed depending on availability of tooling for the machine.
- 5 FIRE DOOR CNC MACHINE**
 We are also able to pre-machine hinges, handles, intumescent strip, lock assemblies and even add grooved patterns to the face of the door.
- 6 IN-HOUSE DELIVERY**
 We have our own fleet of vehicles ready to deliver our manufactured items to you. Probably a good time to mention that we can install too.
- 7 PALLET OF LAMINATED PANELS**
 Pressed in-house with our heated press ready to be machined into cabinetry components.
- 8 LARGE WORKTOP CNC MACHINE**
 This machine has a large bed allowing us to machine large / long items with minimal joins. It also specialises in plinths and pelmets.
- 9 METAL SAW**
 The first requirement before manufacturing is to cut the tube to size.



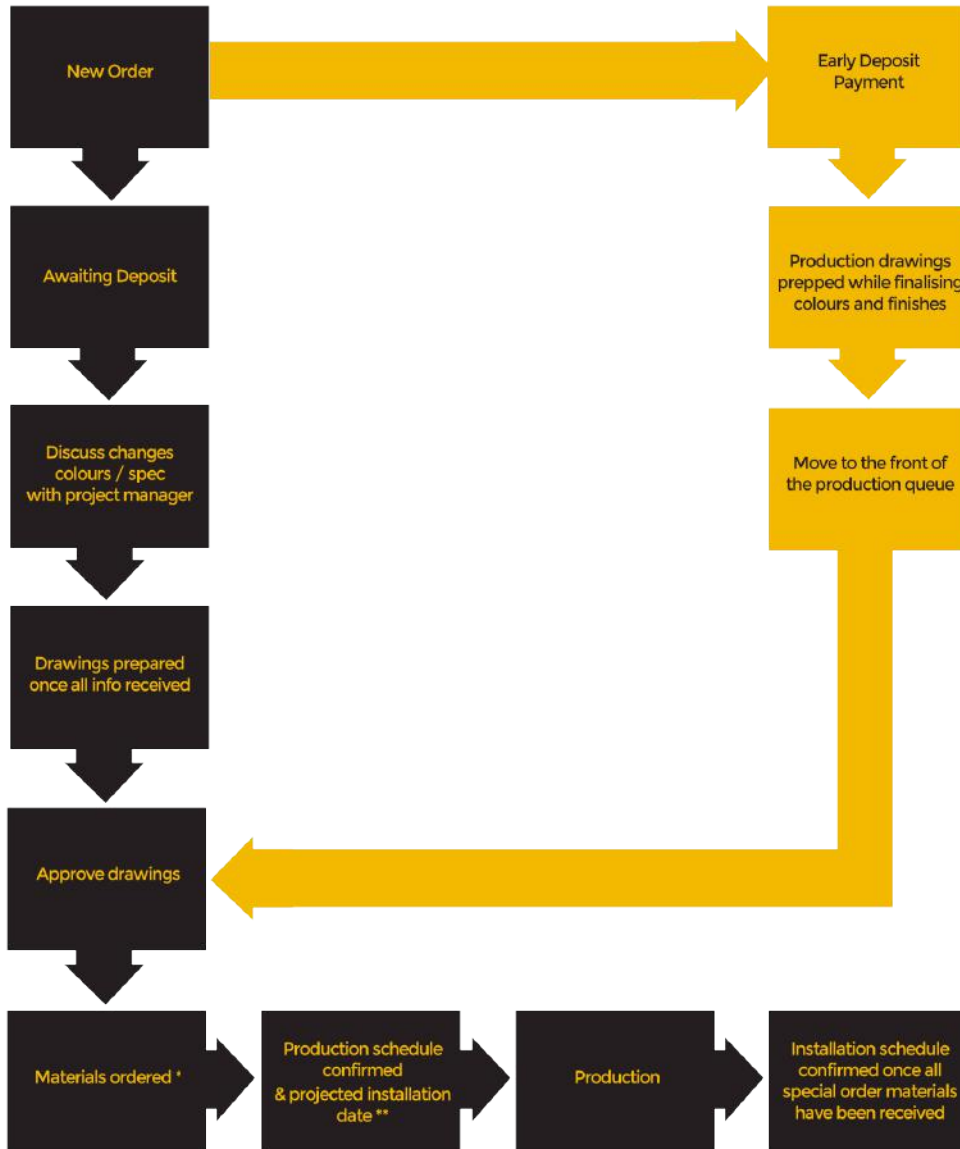
Our Process

One of our sales staff/project managers will visit to discuss your needs and choose a suitable option to price, they will then estimate based on your needs and measurements.

When an order is placed your lab will be surveyed by a member of our installation team who along with the project manager will liaise with our design department to create manufacturing drawings for your approval. When these are reviewed and approved we will then put your furniture into manufacture.

Depending on what solution you have chosen we will take stock items or manufacture from raw material to create all the components for your lab.

Our installation team will be in touch during the process to book an installation date which works for you.



Ambic Standard Laboratories

At Ambic we offer a standard range of furniture which has been designed to be modular and easy to arrange. Even though these labs are built from standard components they will be tailored to fit your layout and needs. If our standard style laboratories do not fit your needs we can offer a fully bespoke option. We can work with you to design your solution whether it be solid surface worktops or stainless steel framework and beyond.

Worktops & Upstands

Ambic STEM Lab

STEM (Science, technology, engineering and maths) labs are our entry level laboratory solution. Here at Ambic we have used our extensive experience in the commercial laboratory environment and conducted our own in-house tests (with some help from our suppliers and customers) on some of the alternative products on the market that have proven to be a good fit for a STEM environment. After all a science class conducted in a STEM lab would not require the same chemical resistance as a commercial grade lab dealing with dangerous and highly corrosive chemical solutions. They also tend to be much more budget sensitive.

A STEM lab comprises of the same build up as even the most high end bespoke lab. Including a powdercoated steel frame, SGL (Solid Grade Laminate) worktop, MF MDF (Melamine faced Medium Density Fibreboard) In this environment we would suggest a SGL upstand material.

Ambic Commercial Grade Lab

A commercial grade lab would generally be under more day to day stress than a typical STEM lab. This could be down to large heavy or vibrating machinery or more corrosive chemicals.

Labs in this type of environment are also known to change in purpose as new research projects are undertaken or a company grows. By having a thicker more durable worktop you also help towards future proofing.

Ambic Commercial Grade Plus Lab

A plus lab is the best solution the market offers to date. Generally less budget sensitive but offers the highest levels of chemical resistance.

As new products become available, this solution is improved further so feel free to ask the team for info on the latest offering.

Ambic Bespoke Laboratories

At Ambic alongside our standard ranges we can offer to create something very unique to your needs with our bespoke labs. As we design & manufacture all our products in house we can come to a solution that meets your requirements.

We can create our standard style support frames in various materials e.g aluminium, stainless steel or a heavier duty steel in our standard sizes or completely tailored to your needs or equipment, even something out of the ordinary utilizing our in house metal workshop.

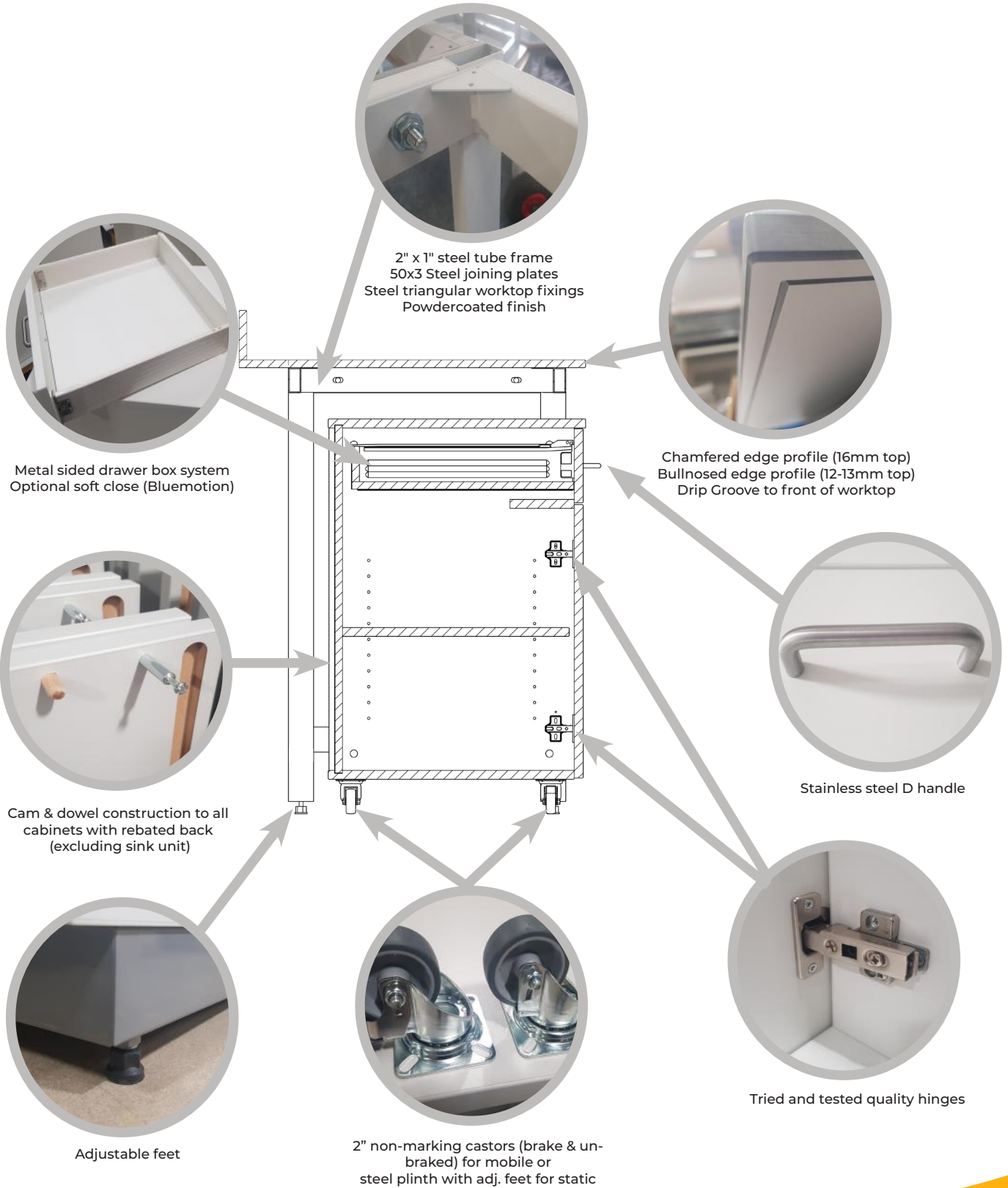
We can offer a range of other materials for worktops including post formed, timber or even solid surface. Cabinets can be created in other materials including solid grade and in many configurations using our in house design and machine shop.

If you are interested in a bespoke solution one of our sales team can tailor a quote for you.

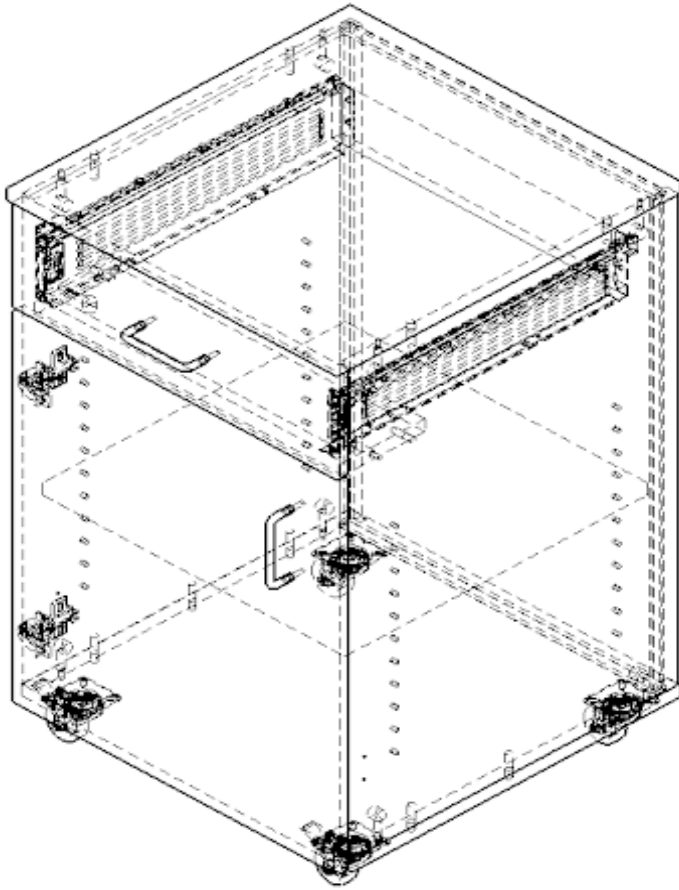
Please see our website www.ambiclaboratories.com for examples of our bespoke work, don't forget that you are not limited to what you see! We love a challenge and specialise in providing bespoke solutions across a wide range of applications.



Laboratory Features



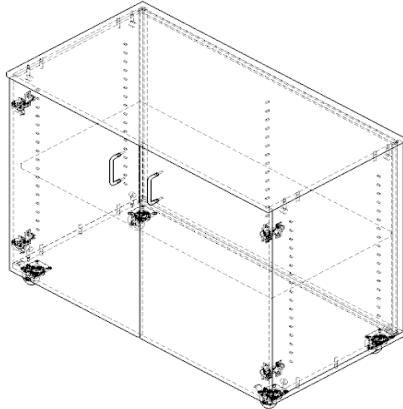
Standard Mobile Under Bench Units



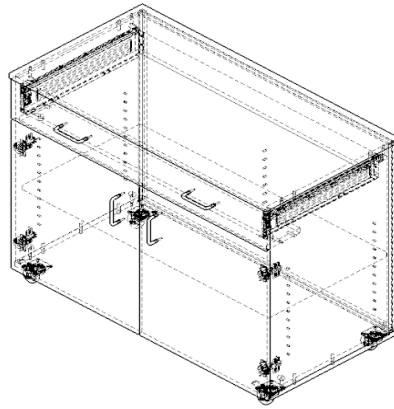
Mobile units are usually the most practical solution for any laboratory environment. They allow for quick and easy reformation of the room layout making sure even the most bespoke design is future proofed.

- Blum metabox drawer box (15mm MFC panels)
- Stainless steel D handles
- 18mm MFMDf carcass / 15mm MFC back (2mm PVC edge)
- Cam & dowelled construction rebated back
- 2" Non-marking rubber / metal castors (front pair braked)

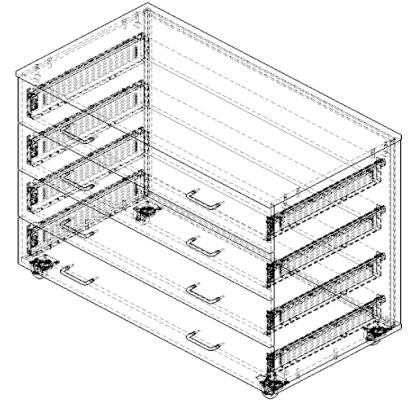
Name	Code	Height (mm)	Width (mm)	Depth (mm)
Mobile Double Cupboard	AM-LAB-MDC0	800	1000	520
Mobile Double Cupboard Drawlined	AM-LAB-MDCD	800	1000	520
Mobile Double width Drawer Unit	AM-LAB-MDD4	800	1000	520
Mobile Single width Drawer Unit	AM-LAB-MSD4	800	500	520
Mobile Single Cupboard Right hand hinged door or Left hand hinged door	AM-LAB-MSCR / AM-LAB-MSCL	800	500	520
Mobile Single Drawlined Cupboard Right hand hinged door or Left hand hinged door	AM-LAB-MSCDR / AM-LAB-MSCDL	800	500	520



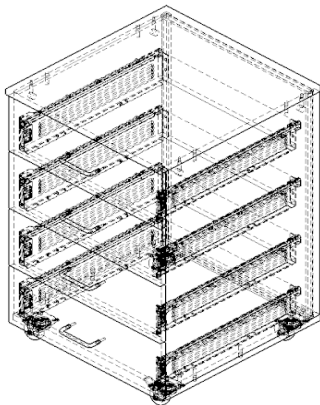
Mobile Double Cupboard
Ref: AM-LAB-MDC0



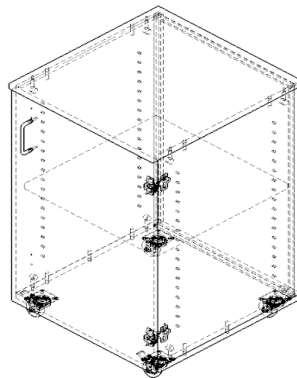
Mobile Double Cupboard Drawlined
Ref: AM-LAB-MDCD



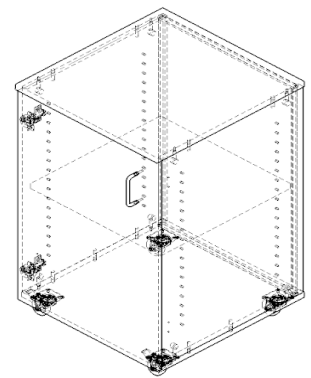
Mobile Double width Drawer Unit
Ref: AM-LAB-MDD4



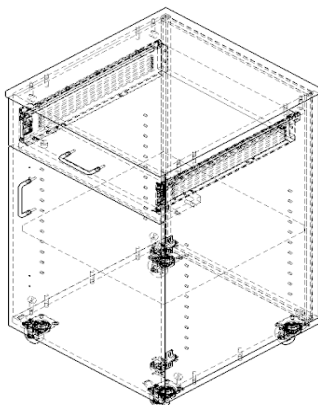
Mobile Single Width Drawer Unit
Ref: AM-LAB-MSD4



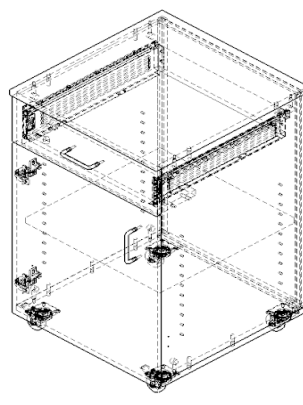
**Mobile Single Cupboard
Right Hand Hinged Door**
Ref: AM-LAB-MSCR



**Mobile Single Cupboard
Left Hand Hinged Door**
Ref: AM-LAB-MSCL

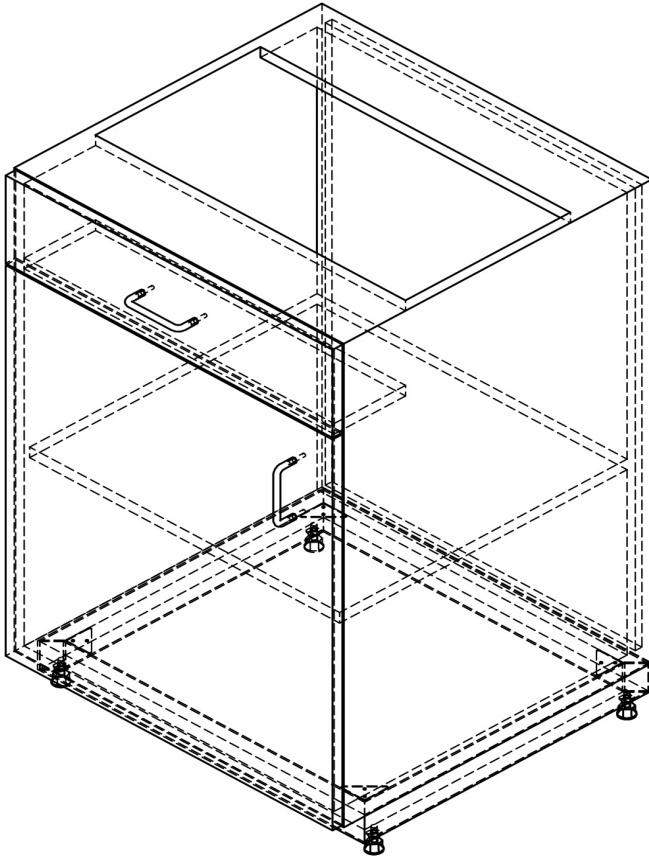


**Mobile Single Drawlined Cupboard
Right Hand Hinged Door**
Ref: AM-LAB-MSCDR



**Mobile Single Drawlined Cupboard
Left Hand Hinged Door**
Ref: AM-LAB-MSCDL

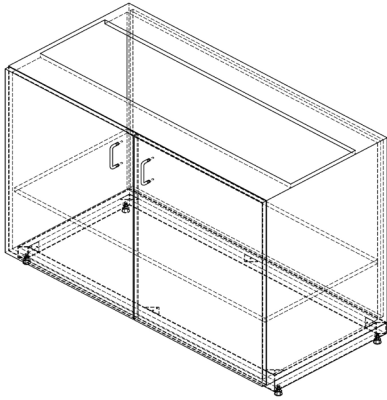
Standard Fitted Under Bench Units



Static cupboards are a fitted option that will support your worktops without the need of other supporting frames. A worktop can be completely supported by static units or partially supported with steel frames to allow under bench space. Sizes are 600mm & 1200mm wide and are intended to be interchangeable with metal frames at design stage or for future redesign our fitting teams could easily replace.

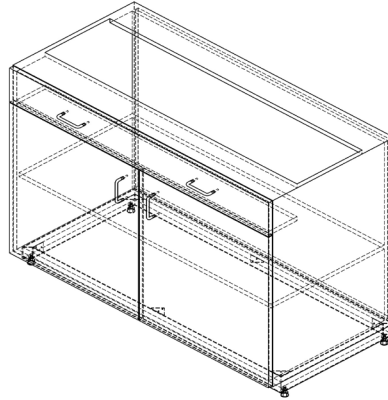
- Blum metabox drawer box (15mm MFC panels)
- Stainless steel D handles
- 18mm MFMDf carcass / 15mm MFC back (2mm PVC edge)
- Cam & dowelled construction rebated back
- Metal Powdercoated Plinth (2"x1" steel tube frame with adjustable feet)

Name	Code	Height (mm)	Width (mm)	Depth (mm)
Fitted Double Cupboard	AM-LAB-FDC0	904	1200	560 gable
Fitted Double Cupboard Drawlined	AM-LAB-FDCD	904	1200	560 gable
Fitted Double width Drawer Unit	AM-LAB-FDD4	904	1200	560 gable
Fitted Single width Drawer Unit	AM-LAB-FSD4	904	600	560 gable
Fitted Single Cupboard Right hand hinged door or Left hand hinged door	AM-LAB-FSCR / AM-LAB-FSCL	904	600	560 gable
Fitted Single Drawlined Cupboard Right hand hinged door or Left hand hinged door	AM-LAB-FSCDR / AM-LAB-FSCDL	904	600	560 gable



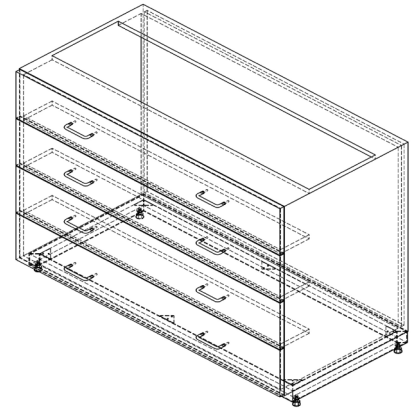
Fitted Double Cupboard

Ref: AM-LAB-FDC0



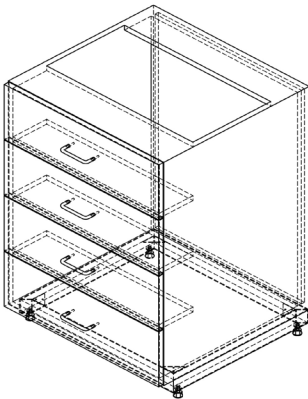
Fitted Double Cupboard Drawlined

Ref: AM-LAB-FDCD



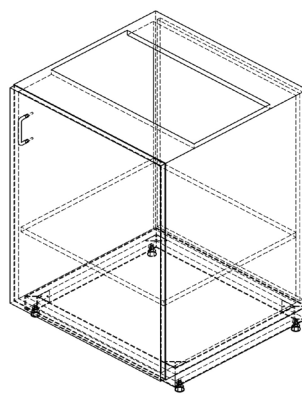
Fitted Double width Drawer Unit

Ref: AM-LAB-FDD4



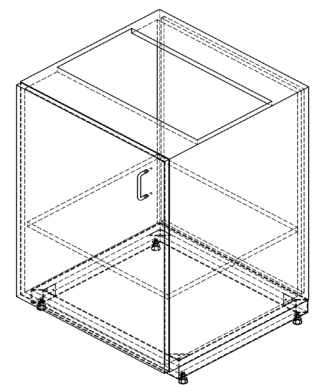
Fitted Single Width Drawer Unit

Ref: AM-LAB-FSD4



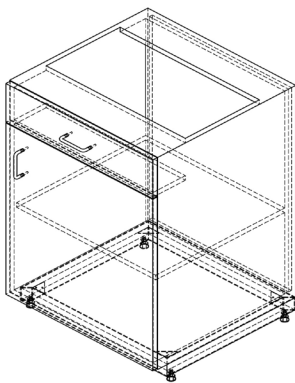
**Fitted Single Cupboard
Right Hand Hinged Door**

Ref: AM-LAB-FSCR



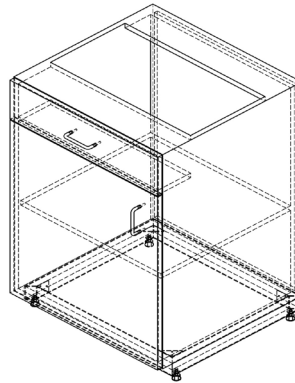
**Fitted Single Cupboard
Left Hand Hinged Door**

Ref: AM-LAB-FSCL



**Fitted Single Drawlined Cupboard
Right Hand Hinged Door**

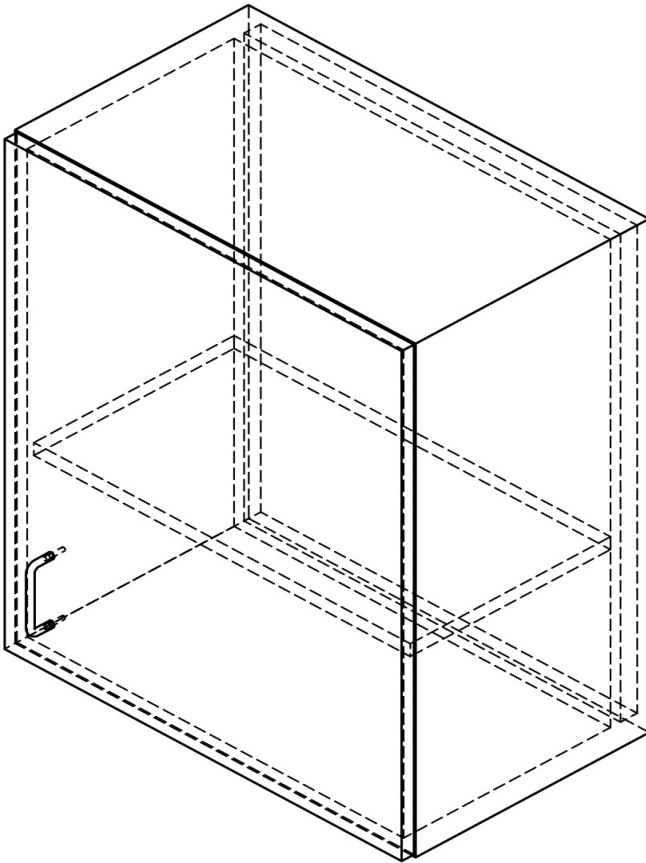
Ref: AM-LAB-FSCDR



**Fitted Single Drawlined Cupboard
Left Hand Hinged Door**

Ref: AM-LAB-FSCDL

Standard Fitted Tall and Wall Units

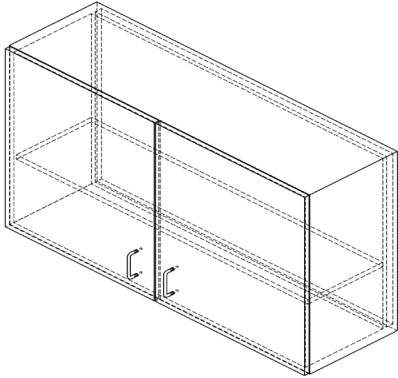


Tall / wall cupboards are intended to go alongside / above benching as an additional form of storage.

Sizes are 600mm & 1200mm wide and are intended to be interchangeable with metal frames and flow well alongside any underbench units.

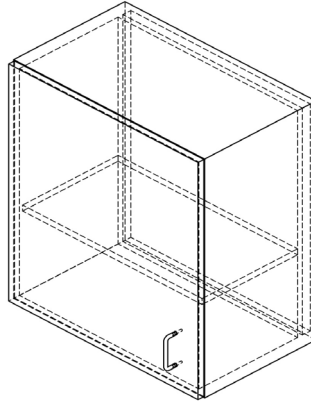
- Stainless steel D handles
- 18mm MFMDf carcass / 15mm MFC back (2mm PVC edge)
- Cam & dowelled construction rebated back
- Metal Powdercoated Plinth (2"x1" steel tube frame with adjustable feet) – tall units only

Name	Code	Height (mm)	Width (mm)	Depth (mm)
Fitted Double Wall Cupboard	AM-LAB-FDWC	720	1200	350 gable
Fitted Single Wall Cupboard Right hand hinged door or Left hand hinged door	AM-LAB-FSWCL/ AM-LAB-FSWCR	720	600	350 gable
Fitted tall Single Cupboard Right hand hinged door or Left hand hinged door	AM-LAB-FSTCL/ AM-LAB-FSTCR	2140	600	560 gable
Fitted tall Double Cupboard	AM-LAB-FDTC	2140	1200	560 gable



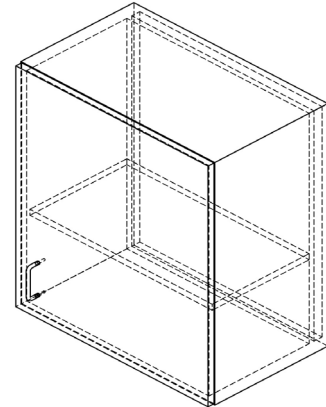
Fitted Double Wall Cupboard

Ref: AM-LAB-FDWC



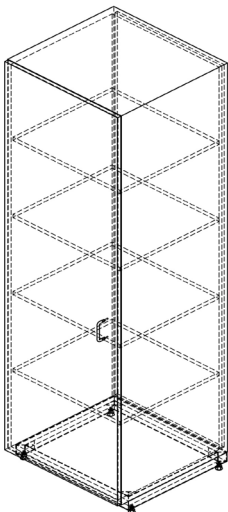
**Fitted Single Wall Cupboard
Left Hand Hinged Door**

Ref: AM-LAB-FSWCL



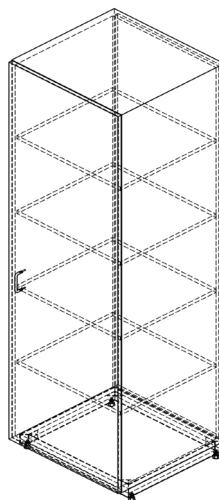
**Fitted Single Wall Cupboard
Right Hand Hinged Door**

Ref: AM-LAB-FSWCR



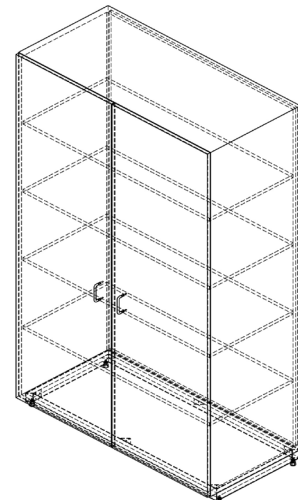
**Fitted Tall Single Cupboard
Left Hand Hinged Door**

Ref: AM-LAB-FSTCL



**Fitted Tall Single Cupboard
Right Hand Hinged Door**

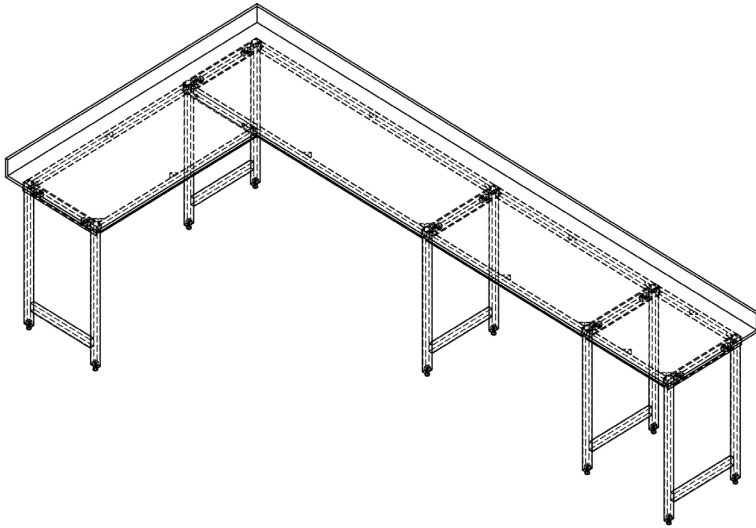
Ref: AM-LAB-FSTCR



Fitted Tall Double Cupboard

Ref: AM-LAB-FDTC

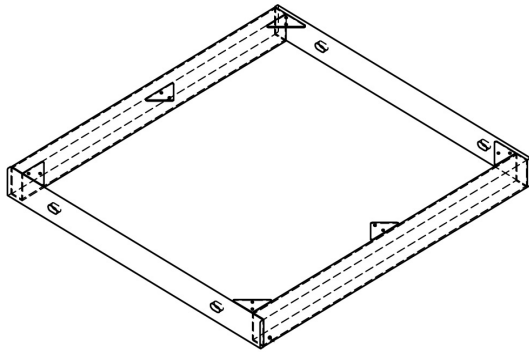
Fitted Lab Bench



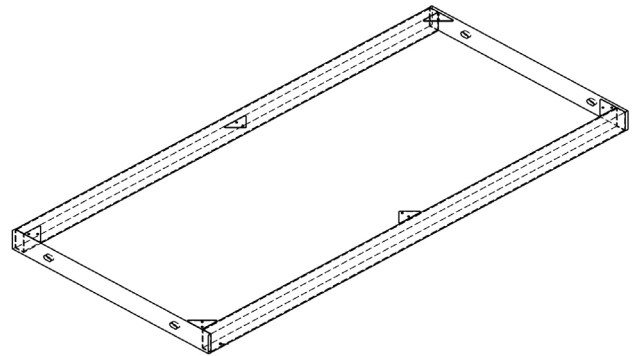
Lab support frames are the part of a laboratory that is generally overlooked but still incredibly important when defining.

- Steel Powder-coated construction
- (2"x1" steel tube frame with adjustable feet, 50 x 3 steel fixing plates, steel triangular worktop fixings)

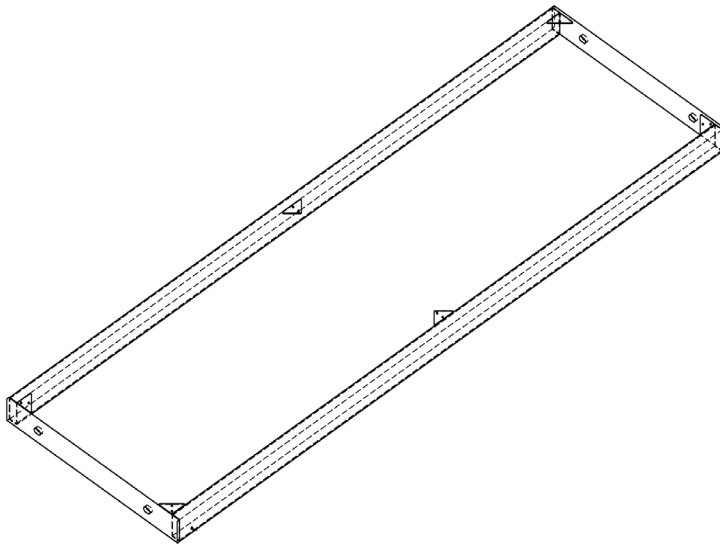
Name	Code	Height (mm)	Width (mm)	Depth (mm)
600 Flying Frame	AM-LAB-06FR	50.8	600	560
1200 Flying Frame	AM-LAB-12FR	50.8	1200	560
1800 Flying Frame	AM-LAB-18FR	50.8	1800	560
End Frame	AM-LAB-ENDF	904	560	50.8



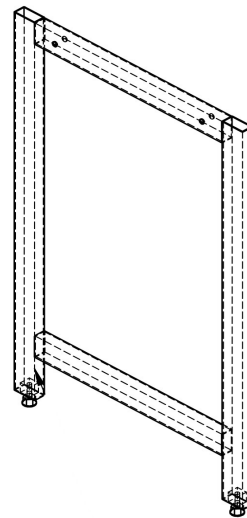
600 Flying Frame
Ref: AM-LAB-06FR



1200 Flying frame
Ref: AM-LAB-12FR

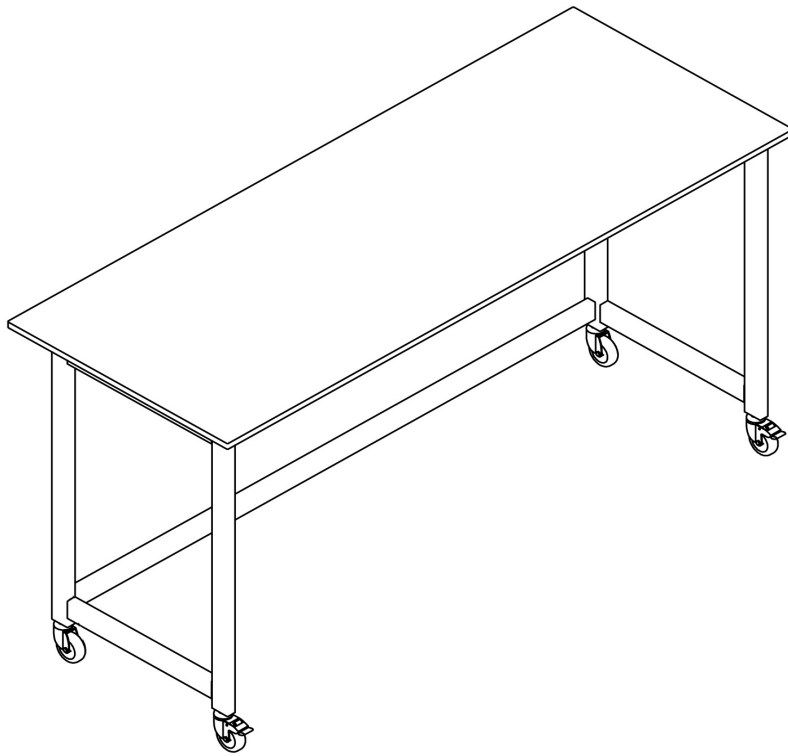


1800 Flying Frame
Ref: AM-LAB-18FR



End Frame
Ref: AM-LAB-ENDF

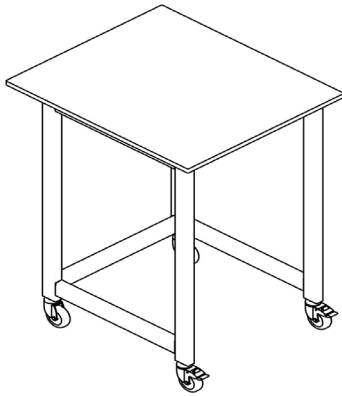
Mobile Lab Bench



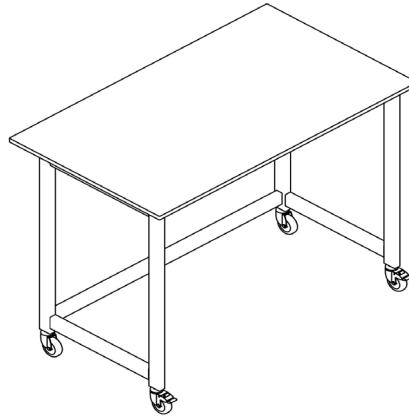
Mobile lab benches, available back-to-wall or freestanding (option of fixed upstand for the back-to-wall can be added)

- Steel Powder-coated construction
- 2"x1" fully welded steel tube frame with 3" non marking casters (1 pair braked 1 pair unbraked) steel triangular worktop fixing

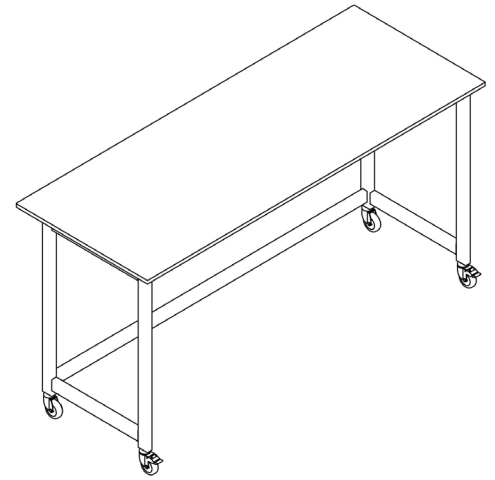
Name	Code	Height (mm)	Width (mm)	Depth (mm)
600 Back To Wall	AM-LAB-06TW	920	600	700
1200 Back To Wall	AM-LAB-12TW	920	1200	700
1800 Back To Wall	AM-LAB-18TW	920	1800	700
600 Loose	AM-LAB-06LO	920	600	700
1200 Loose	AM-LAB-12LO	920	1200	700
1800 Loose	AM-LAB-18LO	920	1800	700



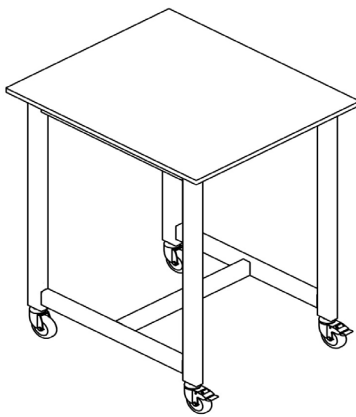
600 Back to wall
Ref: AM-LAB-06TW



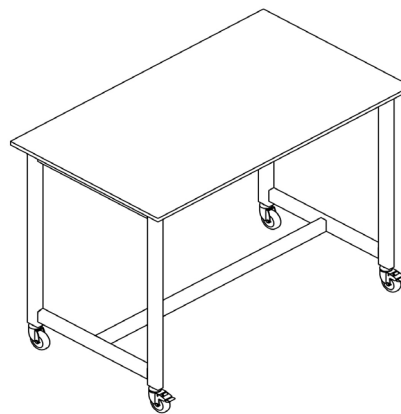
1200 Back to wall
Ref: AM-LAB-12TW



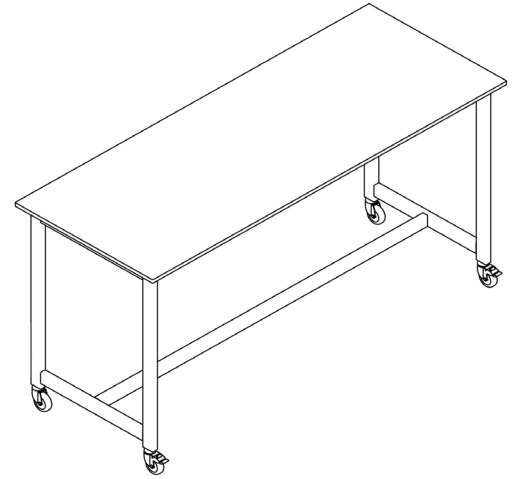
1800 Back to wall
Ref: AM-LAB-18TW



600 Loose
Ref: AM-LAB-06LO

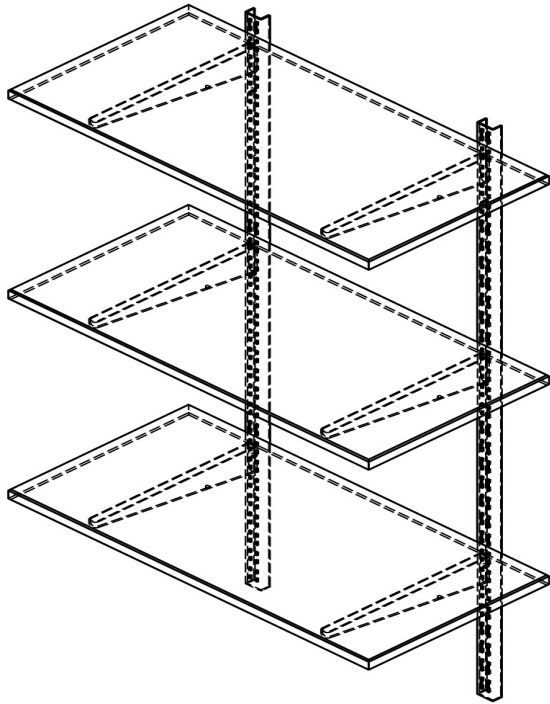


1200 Loose
Ref: AM-LAB-12LO



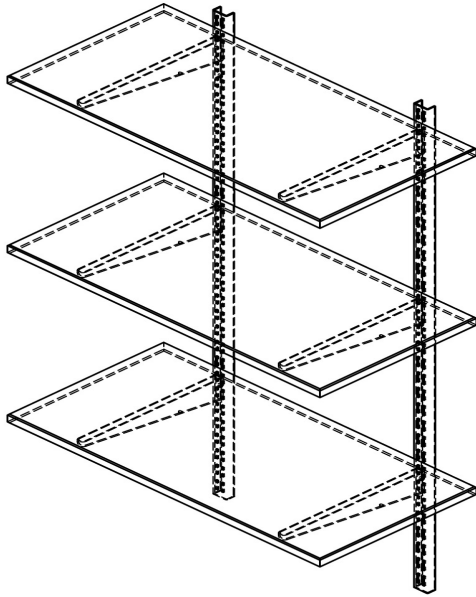
1800 Loose
Ref: AM-LAB-18LO

Wall Mounted Shelving



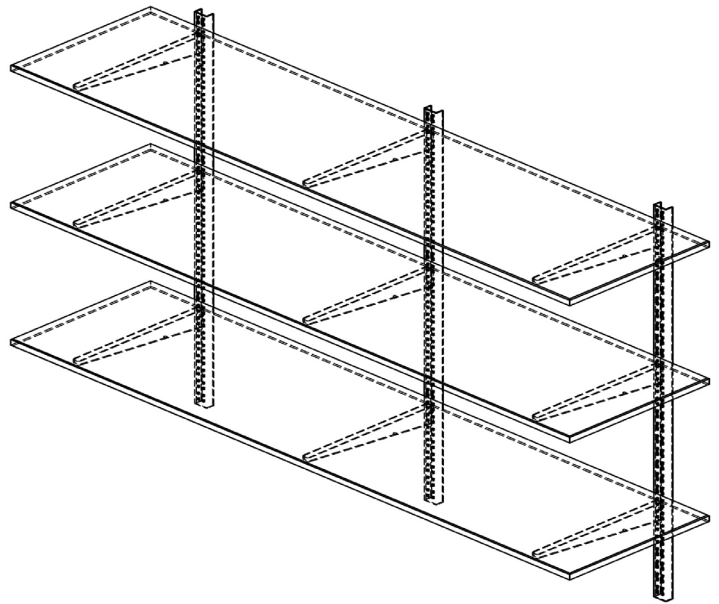
The wall mounted shelving solution from Ambic is a versatile additional storage option. Mounted to the wall with steel uprights & brackets allowing adjustability in height. They also allow you to easily add another shelf in or remove if required. 3 Tier shelving is available in our standard sizes as below and come with 1000mm uprights, 270mm brackets & 18mm MFMDf Shelves (2mm pvc edged).

Name	Code	Height (mm)	Width (mm)	Depth (mm)
Wall Mounted Shelving 600	AM-LAB-WMS6	1000	600	300
Wall Mounted Shelving 1200	AM-LAB-WMS12	1000	1200	300
Wall Mounted Shelving 1800	AM-LAB-WMS18	1000	1800	300



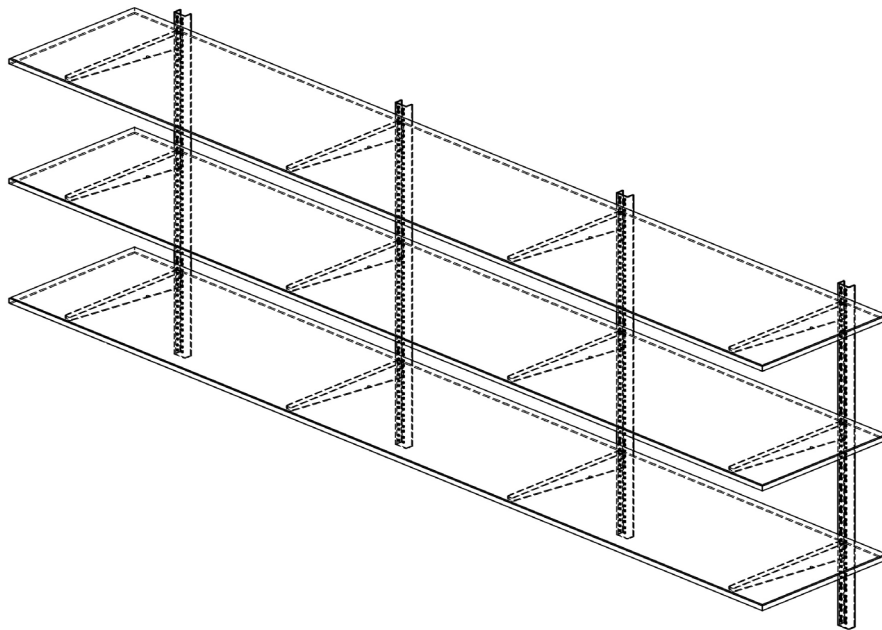
Wall Mounted Shelving 600

Ref: AM-LAB-WMS6



Wall Mounted Shelving 1200

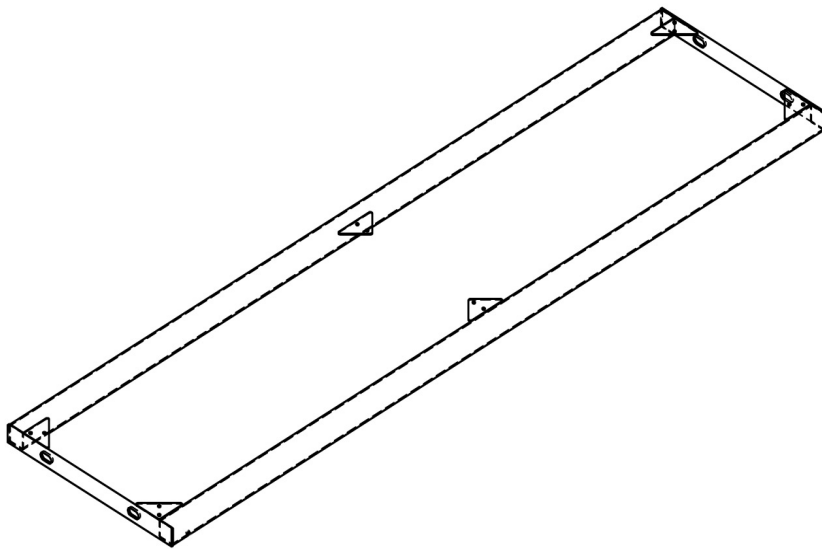
Ref: AM-LAB-WMS12



Wall Mounted Shelving 1800

Ref: AM-LAB-WMS18

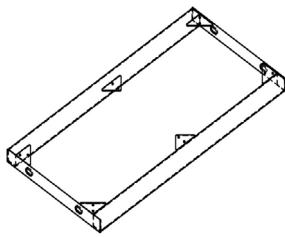
Reagent Shelving



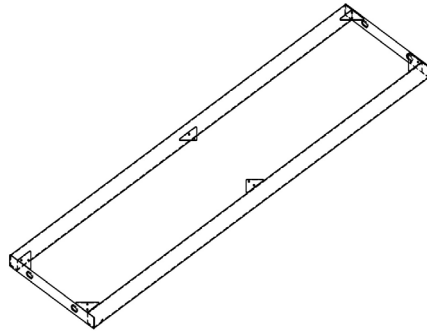
The Reagent shelving solution is a robust way to have additional storage above the bench. It works in a similar way to our support frames, and comes in standard frame sizes. There can be additional tiers fitted to create a 2 or 3 high Reagent solution. These are also useful to fasten on any dado trunking on central island sections etc.

- Work surface for the shelving to match your worktop choice.
- Steel Powdercoated construction
- (1"x1" steel tube frame, 25 x 3 steel fixing plates, steel triangular worktop fixings)

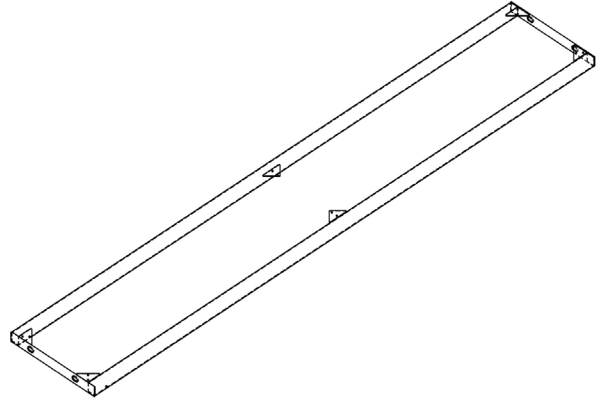
Name	Code	Height (mm)	Width (mm)	Depth (mm)
600 Reagent Shelving Flying Frame	AM-LAB-RSF6	25.4	600	300
1200 Reagent Shelving Flying Frame	AM-LAB-RSF12	25.4	1200	300
1800 Reagent Shelving Flying Frame	AM-LAB-RSF18	25.4	1800	300
Reagent Shelving End Frame	AM-LAB-RSE	300	300	25.4
Reagent Shelving End Frame Tall	AM-LAB-RSET	500	300	25.4



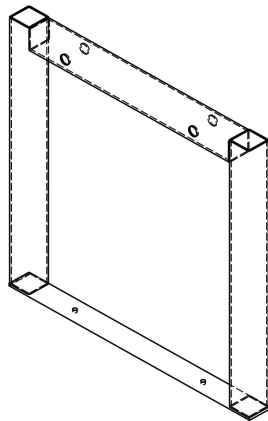
600 Reagent Shelving Flying Frame
Ref: AM-LAB-06TW



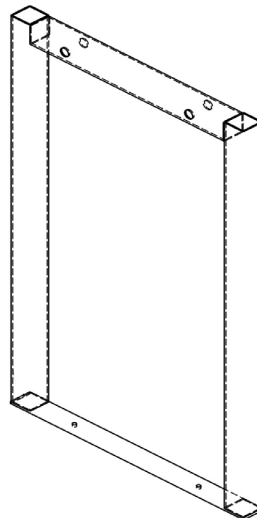
1200 Reagent Shelving Flying Frame
Ref: AM-LAB-12TW



1800 Reagent Shelving Flying Frame
Ref: AM-LAB-18TW

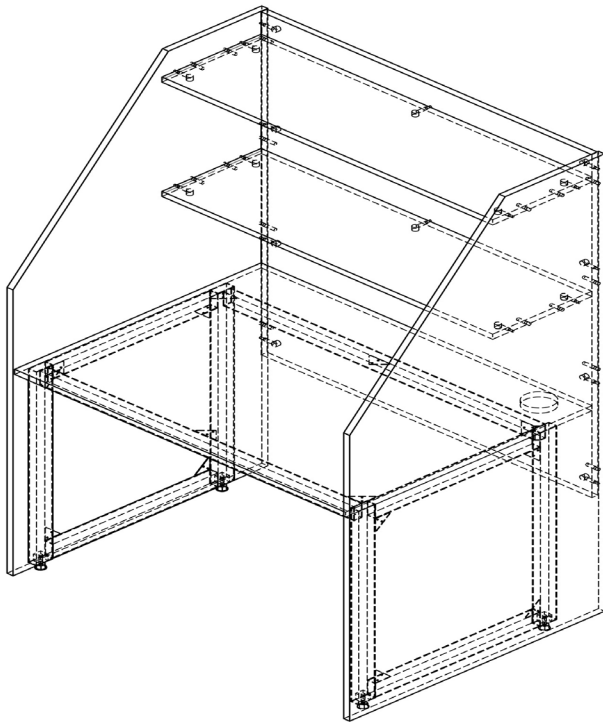


Reagent Shelving End Frame
Ref: AM-LAB-12TW



Reagent Shelving End Frame Tall
Ref: AM-LAB-12TW

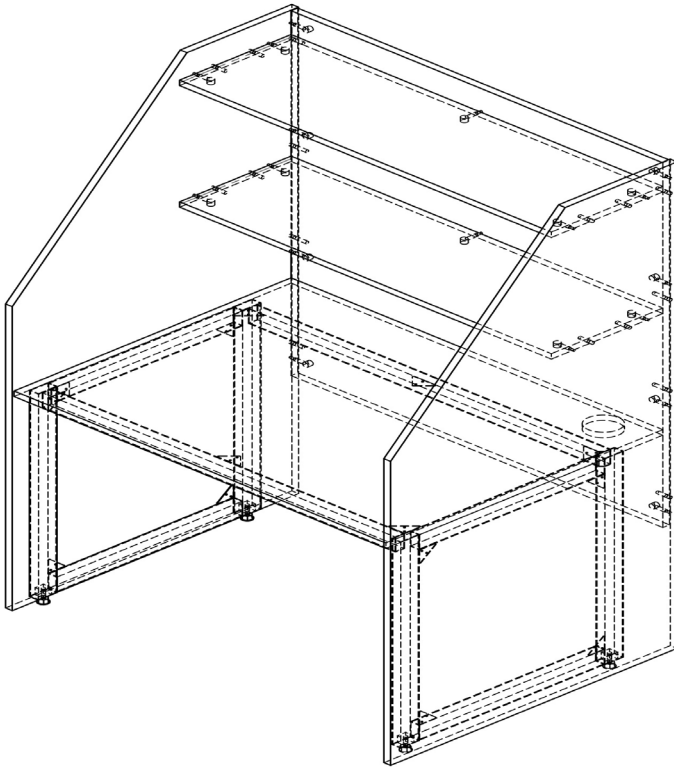
Writeup Desk



A clean space away from your usual work environment intended for writing/typing up your literature.

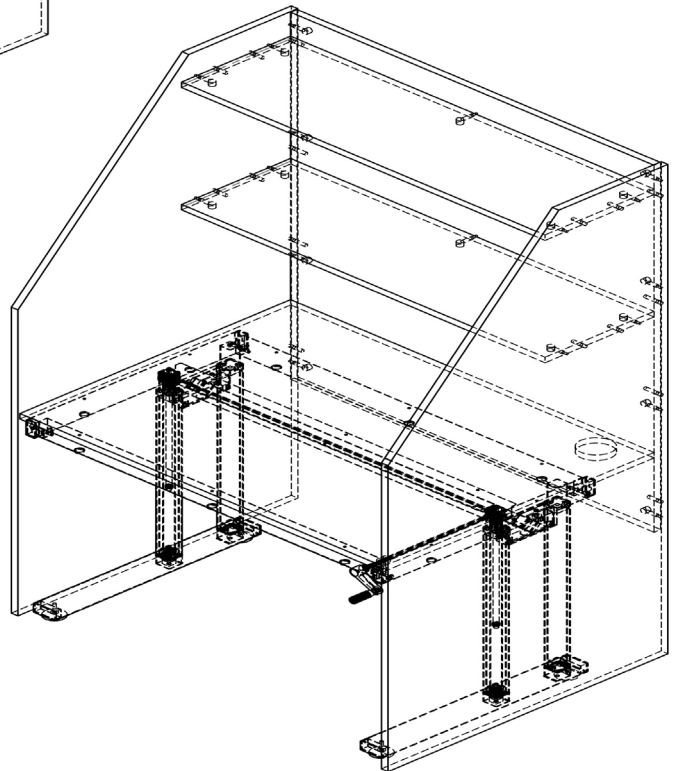
- Upper Shelving, cable port and management to rear of worktop, available with an adjustable height worktop or fixed.
- Metal Powdercoated Frame (2"x1" steel tube frame with adjustable feet) /Or height adjustable frame
- 18mm MFMDf carcass panels (2mm PVC edge)
- Cam & doweled construction

Name	Code	Height (mm)	Worktop Height FFL (mm)	Width (mm)	Depth (mm)
Write-up desk Fixed	AM-LAB-WUDF	1600	720	1036	770 (WT 745)
Write-up desk Height Adjustable	AM-LAB-WUDA	1600	660 - 960 (approx)	1036	770 (WT 745)



Write-up Desk Fixed

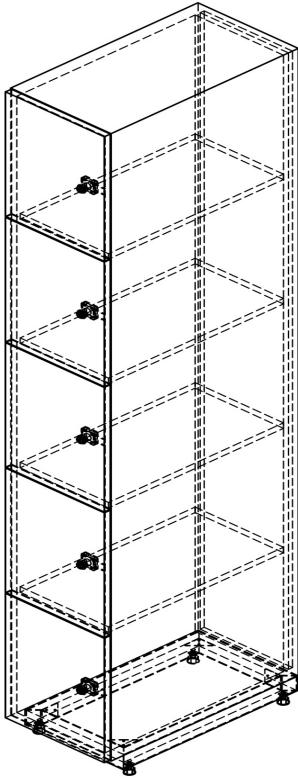
Ref: AM-LAB-WUDF



Write-up Desk Height Adjustable

Ref: AM-LAB-WUDA

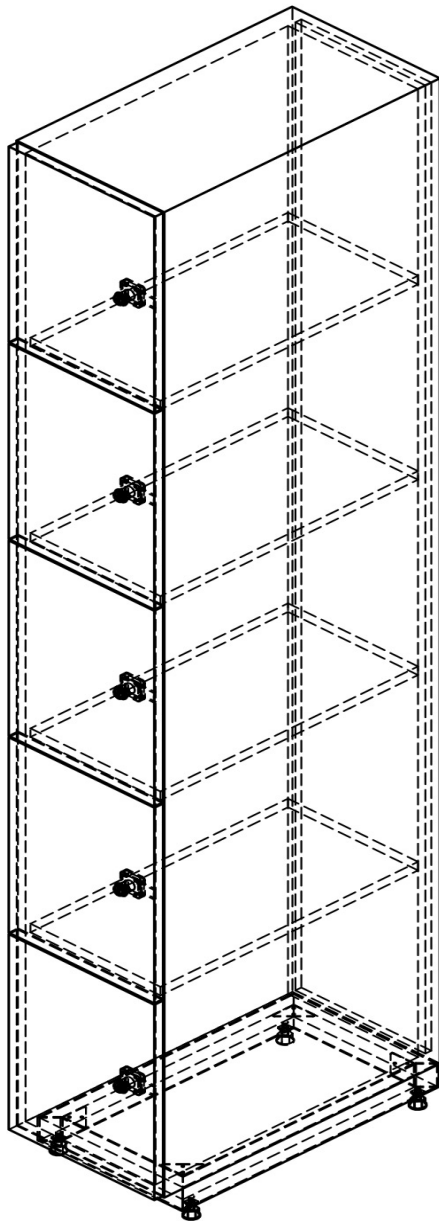
Lockers



A lockable storage space to safely store your personal items away from contamination. We offer banks of five lockers, left hand hinged or right hand hinged. Bespoke variations also available.

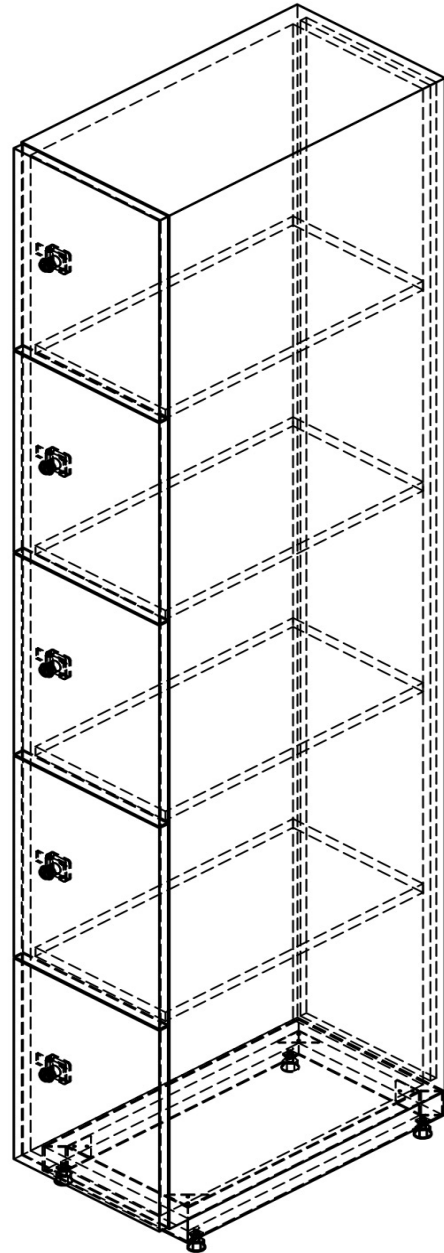
- Metal Powdercoated Plinth (2"x1" steel tube frame with adjustable feet)
- 18mm MFMDf carcass/15mm MFC back (2mm PVC edge)
- Cam & doweled construction rebated back

Name	Code	Height (mm)	Width (mm)	Depth (mm)
Locker Right Handed	AM-LAB-LKRR	2140	300	560 gable
Locker Left Handed	AM-LAB-LKRL	2140	300	560 gable



Locker Left Handed

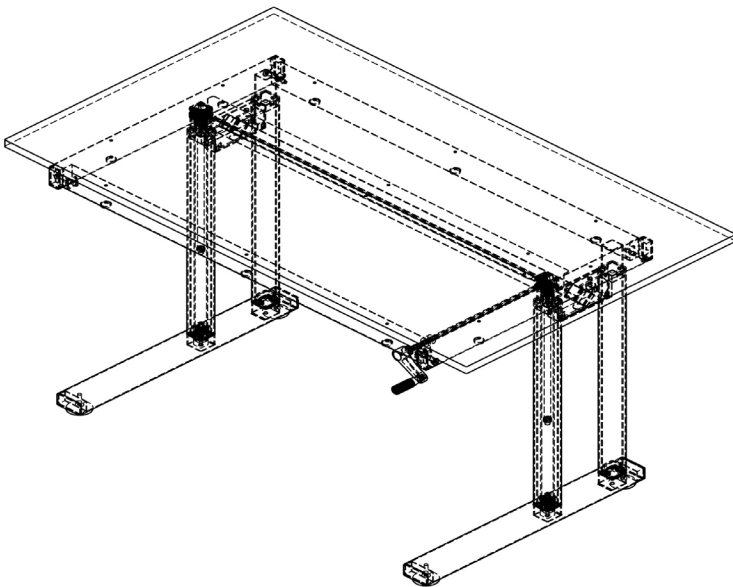
Ref: AM-LAB-LKRL



Locker Right Handed

Ref: AM-LAB-LKRR

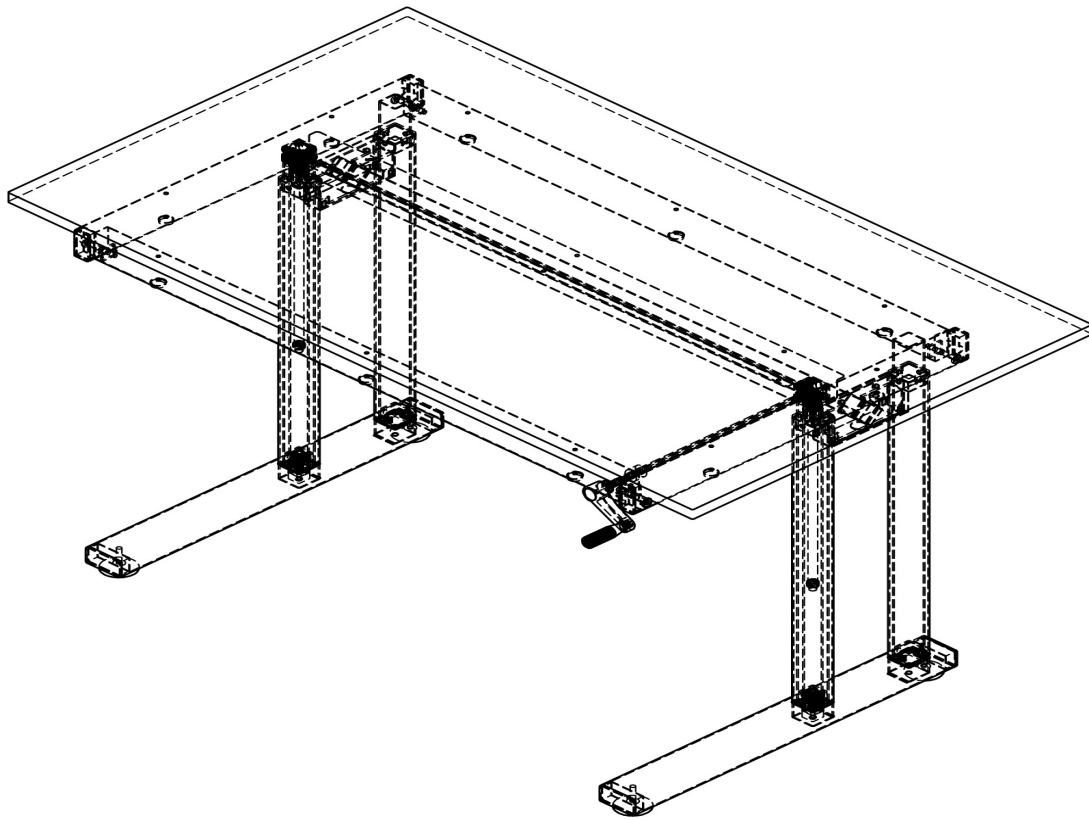
Height Adjustable Bench



We offer a height adjustable bench solution , these benches will have matching worktop to your labs choice and adjust the working height from 640mm to 940mm approx.

Available with a 1200x700 worktop (bespoke available).

Name	Code	Worktop Height FFL (mm)	Width (mm)	Depth (mm)
Height Adjustable Bench	AM-LAB-HAB	660-960 approx	1200mm	700mm



Height Adjustable Bench

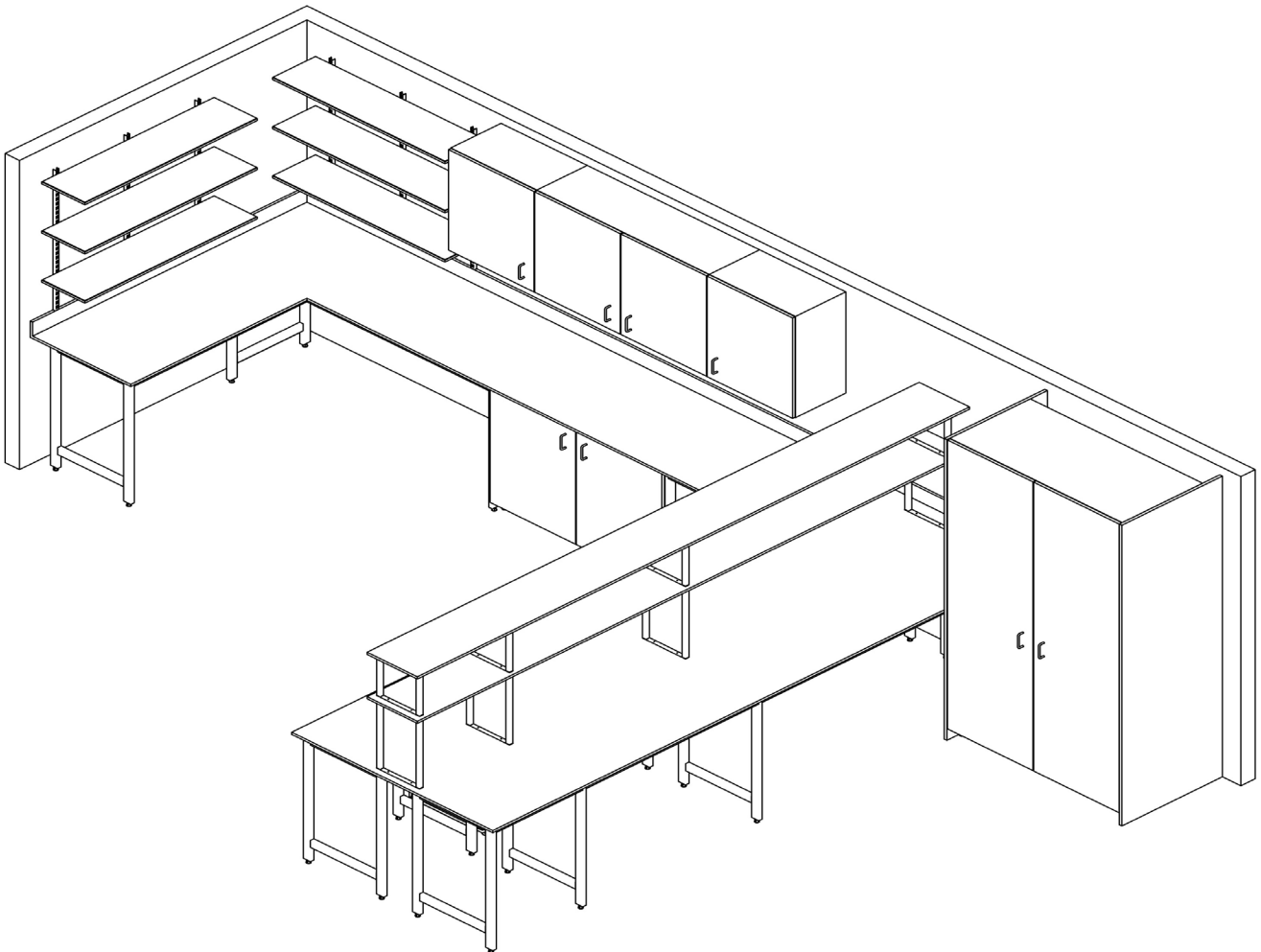
Ref: AM-LAB-HAB

Finishing Items

These Items are not necessary for a fitted lab solution but are an option that will finish the room off nicely.

These will be priced on a case by case basis on what you require in your lab, fillers, clad on plinths, pelmets & end gables. These items will be scribed in by our fitting teams.

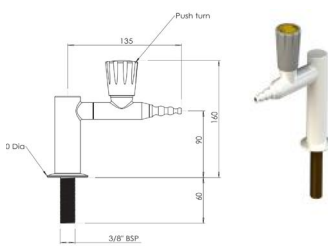
We also offer a filler frame. This will be a bespoke size flying frame to add to your support frames to take up any odd size space which our standard frames won't fit into.



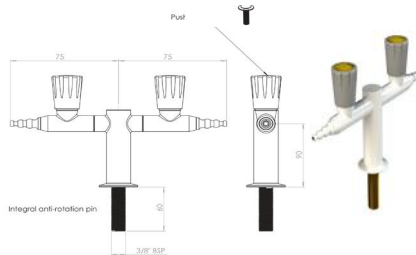
Laboratory Gas Taps

From laboratory gas and water taps to fume cupboard controls, we have a wide range of products to suit all your laboratory and education needs. All our products are WRAS certified ensuring quality.

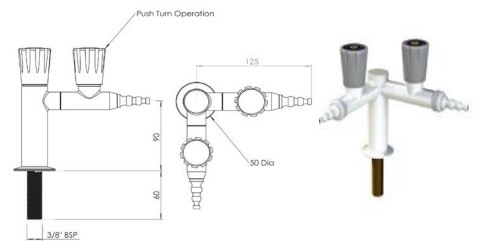
Ambic - British made furniture, built to last.



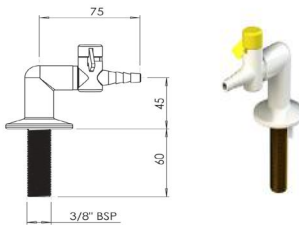
Ref: AM-900301 One Way Bench Mounted Gas Tap With Push Turn Handle
Thread: 3/8 "



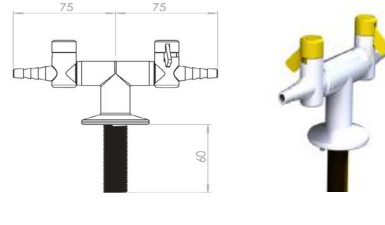
Ref: AM-900302 Two Way 180° Bench Mounted Gas Tap With Push Turn Handle
Thread: 3/8 "



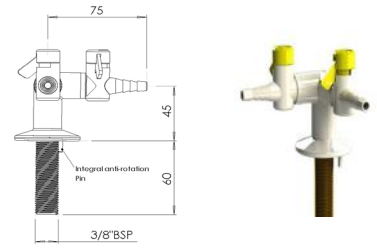
Ref: AM-900303 Two Way 90° Bench Mounted Gas Tap With Push Turn Handle
Thread: 3/8 "



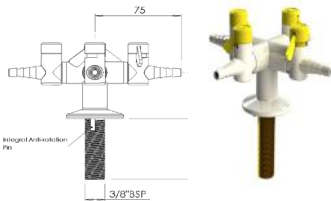
Ref: AM-900031 One Way Bench Mounted Drop Lever Gas Tap
Thread: 3/8 "



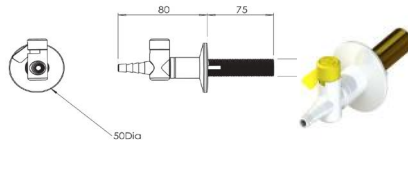
Ref: AM-900032 Two Way 180° Bench Mounted Drop Lever Gas Tap
Thread: 3/8 "



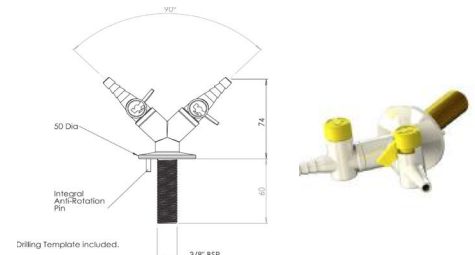
Ref: AM-900033 Two Way 90° Bench Mounted Drop Lever Gas Tap
Thread: 3/8 "



Ref: AM-900034 Four Way Bench Mounted Drop Lever gas Tap
Thread: 3/8 "



Ref: AM-900035 One Way Wall Mounted Drop Lever Gas Tap
Thread: 3/8 "



Ref: AM-900036 Two Way Wall Mounted Drop Lever Gas Tap
Thread: 3/8 "

Laboratory Water Taps

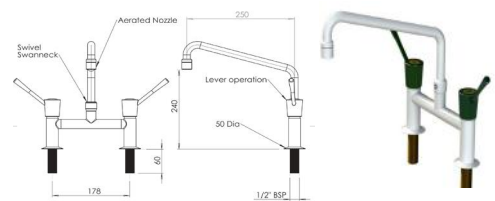
From laboratory gas and water taps to fume cupboard controls, we have a wide range of products to suit all your laboratory and education needs. All our products are WRAS certified ensuring quality.

Ambic - British made furniture, built to last.

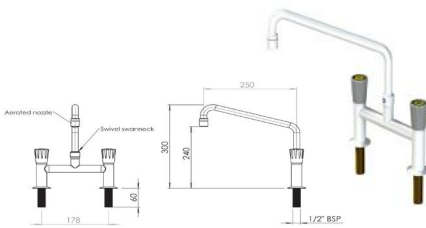


Ref: **AM-900103** Fixed Swan Neck With Fixed Nozzle
AM-900101 Thread: 1/2 " BSP
 Cold (AM-900103)
 Hot (AM-900101)

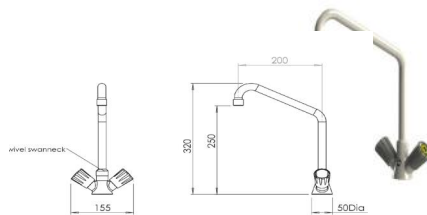
Ref: **AM-902103** Fixed Swan Neck With Removable Nozzle
AM-902101 Thread: 1/2 " BSP
 Cold (AM-902103)
 Hot (AM-902101)



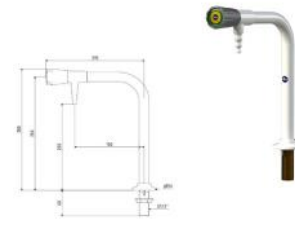
Ref: **AM-910078** H Pattern Mixer Tap With Lever Action And Aerator Nozzle
 Thread: 1/2 " BSP



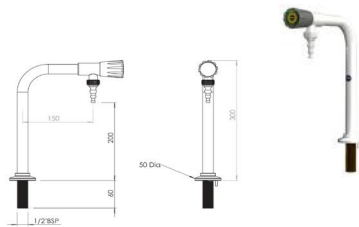
Ref: **AM-900078** H Pattern Mixer Tap With Movable Swan Neck And Aerator Nozzle
 Thread: 1/2 " BSP



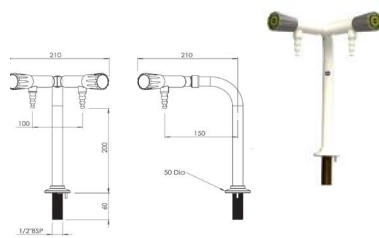
Ref: **AM-900115** Monoblock Mixer With Aerator
 Thread: 1/2 " BSP



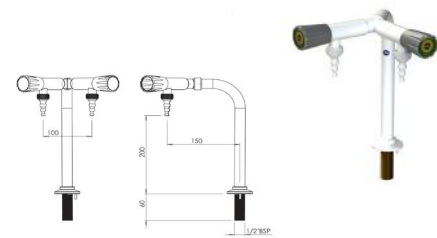
Ref: **AM-900120** Pillar Bib Tap With Fixed Nozzle
 Thread: 1/2 " BSP



Ref: **AM-900121** Pillar Bib Tap With Removable Nozzle
 Thread: 1.2 " BSP



Ref: **AM-901124** One Way Wall Mounted Drop Lever Gas Tap
 Thread: 1/2 " BSP



Ref: **AM-901125** Two Way Wall Mounted Drop Lever Gas Tap
 Thread: 1/2 " BSP

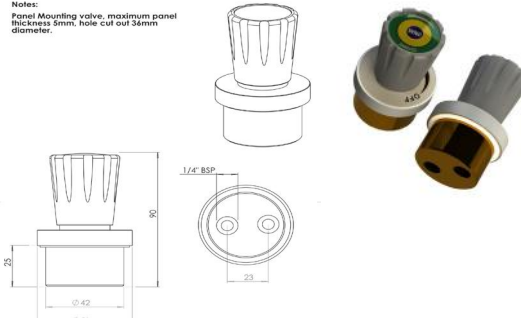
Laboratory Specialist Taps & Accessories

From laboratory gas and water taps to fume cupboard controls, we have a wide range of products to suit all your laboratory and education needs. All our products are WRAS certified ensuring quality.

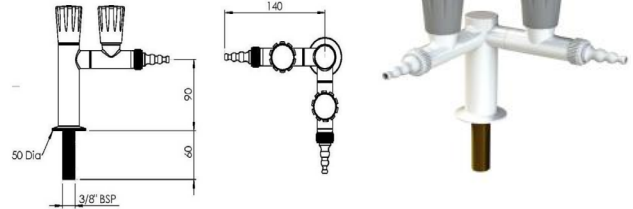
Ambic - British made furniture, built to last.



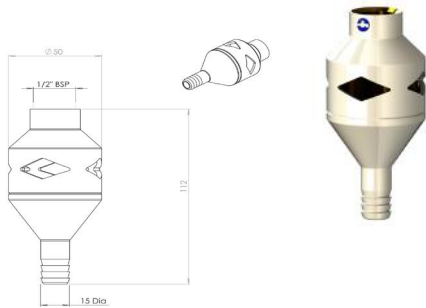
Notes:
Panel Mounting valve, maximum panel thickness 5mm, hole cut out 36mm diameter.



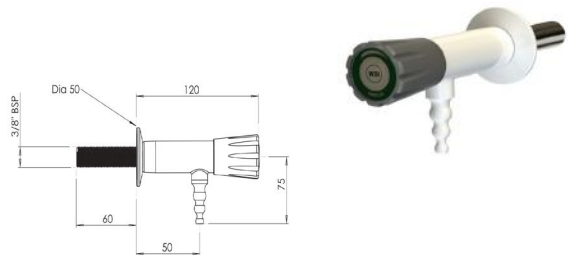
Ref: AM-901711 FRONT CONTROL VALVE FOR A VARIETY OF SERVICES
Thread: 1/4 " BSP



Ref: AM-902503 2 WAY DRY SERVICE TAP WITH REMOVABLE NOZZLE
Thread: 3/8 " BSP



Ref: AM-900100 WRAS APPROVED BACK FLOW PREVENTION NOZZLE
Thread: 1/2 " BSP

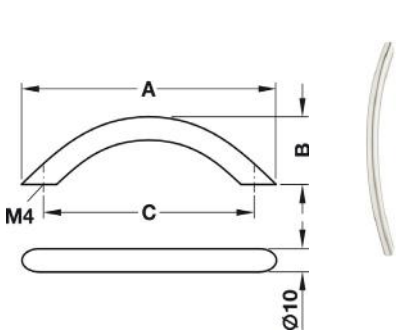
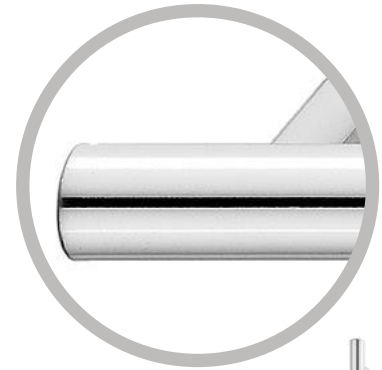


Ref: AM-900198 WALL MOUNTED STAINLESS STEEL WATER TAP FOR SPECIAL WATERS
Thread: 3/8 " BSP

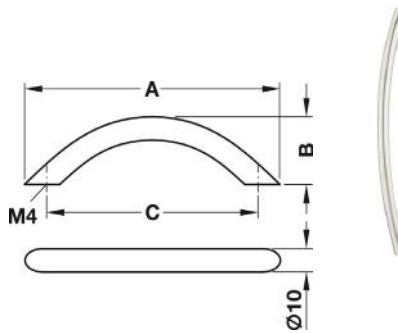
Laboratory Cabinet Handles

Our range of cabinet accessories are designed to be functional and robust yet still complement the great looking design of your Ambic furniture.

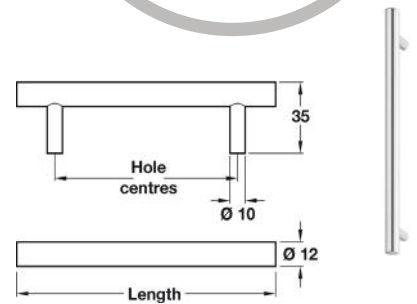
Ambic - British made furniture, built to last.



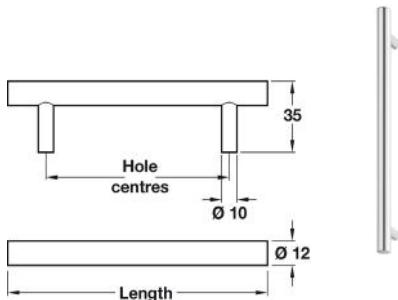
Ref: AM-HAN211 CLIFTON STAINLESS STEEL BOW HANDLE
 LENGTH 148 MM (A)
 HOLE SPACING 128 MM (C)
 DEPTH 30 MM (B)
 FINISH BRUSHED EFFECT



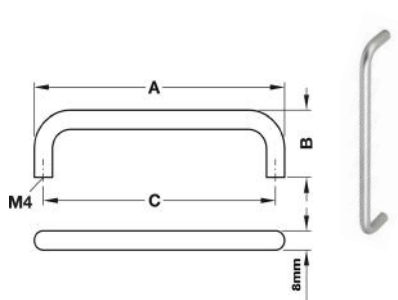
Ref: AM-HAN221 CLIFTON STAINLESS STEEL BOW HANDLE
 LENGTH 184 MM (A)
 HOLE SPACING 160 MM (C)
 DEPTH 32 MM (B)
 FINISH BRUSHED EFFECT



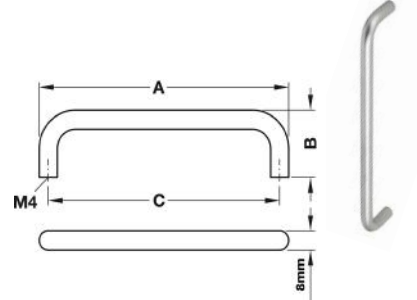
Ref: AM-HAN311 BELLA STEEL BAR HANDLE
 LENGTH 136 MM
 HOLE SPACING 96 MM
 DEPTH 30 MM
 FINISH POLISHED CHROME



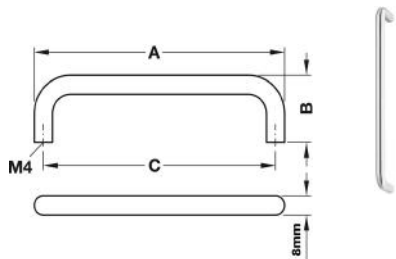
Ref: AM-HAN321 BELLA STEEL BAR HANDLE
 LENGTH 200 MM
 HOLE SPACING 160 MM
 DEPTH 35 MM
 FINISH POLISHED CHROME



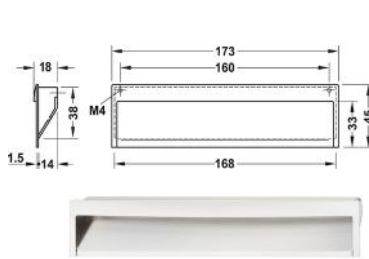
Ref: AM-HAN111 D PULL HANDLE
 LENGTH 104 MM (A)
 HOLE SPACING 96 MM (C)
 DEPTH 30 MM (B)
 FINISH ALUMINIUM



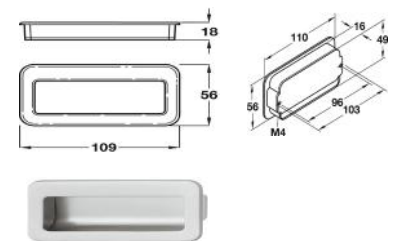
Ref: AM-HAN121 D PULL HANDLE
 LENGTH 168MM (A)
 HOLE SPACING 160MM (C)
 DEPTH 30MM (B)
 FINISH ALUMINIUM



Ref: AM-HAN112 D PULL HANDLE
 LENGTH 104 MM (A)
 HOLE SPACING 96 MM (C)
 DEPTH 30 MM (B)
 FINISH POLISHED CHROME



Ref: AM-HAN411 FLUSH ZINC ALLOY HANDLE
 LENGTH 173 MM
 HOLE SPACING 160 MM
 HEIGHT 45 MM
 DEPTH 18 MM
 FINISH BRUSHED NICKEL



Ref: AM-HAN421 FLUSH ZINC ALLOY HANDLE
 LENGTH 109MM
 HOLE SPACING 96 MM
 HEIGHT 56 MM
 DEPTH 18MM
 FINISH BRUSHED CHROME

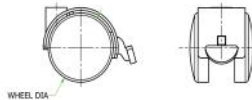
Laboratory Cabinet Castors

Our range of cabinet accessories are designed to be functional and robust yet still complement the great looking design of your Ambic furniture.

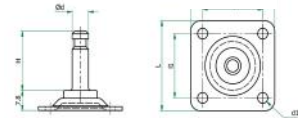
Ambic - British made furniture, built to last.



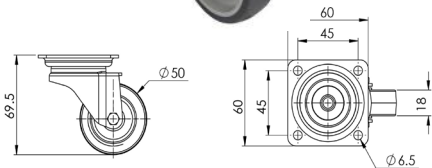
REF: AM-CST010 CASTOR - 2" BLACK PLASTIC UNBRAKED
 DIAMETER 50.0 MM / 1.969"
 LOAD CAPACITY 60KG
 COLOUR BLACK



REF: AM-CST011 CASTOR - 2" BLACK PLASTIC BRAKED
 DIAMETER 50.0 MM / 1.969"
 LOAD CAPACITY 60KG
 COLOUR BLACK



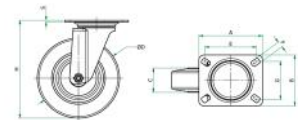
REF: AM-CST012 2" CASTOR PLATE FIXING
 DIAMETER 50.0 MM / 1.969"
 LOAD CAPACITY 60KG
 COLOUR BLACK



REF: AM-CST001 CASTOR-2" SCREW IN RUBBER CASTOR - GREY UNBRAKED
 DIAMETER 50.0 MM / 1.969"
 WHEEL WIDTH 18 MM
 LOAD CAPACITY 40KG
 COLOUR BLACK



REF: AM-CST002 CASTOR-2" SCREW IN RUBBER CASTOR - GREY BRAKED
 DIAMETER 50.0 MM / 1.969"
 WHEEL WIDTH 18 MM
 LOAD CAPACITY 40KG
 COLOUR BLACK

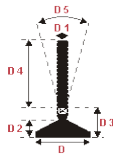


REF: AM-CST002 CASTOR-3" SCREW IN RUBBER CASTOR - GREY BRAKED
 DIAMETER 50.0 MM / 1.969"
 WHEEL WIDTH 18 MM
 LOAD CAPACITY 40KG
 COLOUR BLACK

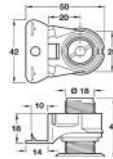
Laboratory Cabinet Feet

Our range of cabinet accessories are designed to be functional and robust yet still complement the great looking design of your Ambic furniture.

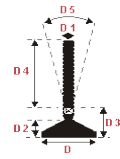
Ambic - British made furniture, built to last.



REF: AM-FOT001 PRESSED STEEL ZINC PLATED FEET
 BASE DIAMETER 85 MM
 LOAD RATING 750KG



REF: AM-FOT002 ADJUSTABLE FOOT FOR LONG ALIGNING HEAVY FURNITURE, INTEGRAL NUT
 HEIGHT ADJUST 25 MM
 LOAD RATING 175 KG



REF: AM-FOT003 ADJUSTABLE LEVELLING FEET
 STEM DIAMETER 10 MM
 LOAD RATING 250KG
 BASE POLYIMIDE



REF: AM-FOT004 FOOT INSERT - 50X25MM M10 2MM- SOLID TYPE



REF: AM-FOT005 30MM DIA. FOOT M10X35MM, INTEGRAL NUT
 HEIGHT ADJUST 25 MM
 LOAD RATING 1000 KG



REF: AM-FOT006 FOOT SCREW-22MM A/F HEXAGONAL FOOT M8X15 MM STEM
 LOAD RATING n/k



REF: AM-FOT007 ADJUSTABLE FOOT, M8X38MM
 DIAMETER 25 MM



REF: AM-FOT008 FOOT SCREW-ADJUSTABLE SCREW-M10 THREAD WITH FIXED FOOT
 LOAD RATING 1000 KG

Laboratory Waste, Overflow & Traps

Robust and functional, we only use top quality parts in our laboratory installations to ensure years and years of problem-free operation.

Ambic - British made furniture, built to last.



Ref: AM-WST001 WASTE-MCALPINE 1 1/2" WASTE SC10



Ref: AM-WST002 WASTE-MCALPINE 1 1/4" WASTE SA10



Ref: AM-WST003 BASIN WASTE WITH OVERFLOW CHROME - PLUG AND CHAIN



Ref: AM-WST004 WASTE - 1 1/4" CHROME WASTE OVERFLOW SLOT



Ref: AM-WST005 VULCATHENE 504 UNSLOTTED WASTE PIPE 38 X 85MM



Ref: AM-WST006 WASTE - 15MM THERMOSTATIC WASTE MIXING VALVE TMV3



Ref: AM-WST007 VULCATHENE OVER FLOW ASSEMBLY 9" - 22"



Ref: AM-WST008 WASTE- ANTI-SIPHON BOTTLE TRAP

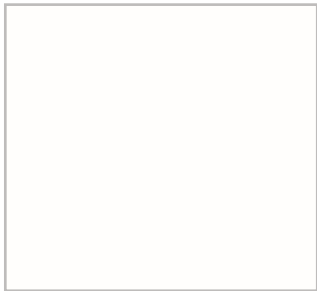


Ref: AM-WST009 VULCATHENE CLAY TRAP

Standard Cabinetry Finishes

Give your Ambic furniture a unique style or match with an existing installation.

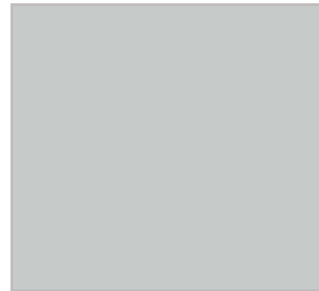
Ambic - British made furniture, built to last.



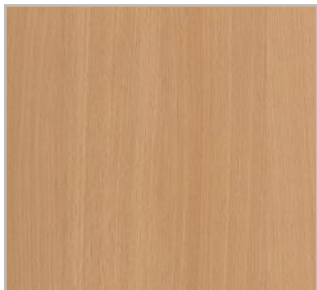
Ref: AM-K101 MF MDF WHITE 18MM



Ref: AM-U190 MF MDF BLACK 18MM



Ref: AM-U112 MF MDF GREY 18MM



Ref: AM-D381 MF MDF BEECH 18MM



Ref: AM-D375 MF MDF MAPLE 18MM



Ref: AM-U162 MF MDF DARK GREY 18MM



Ref: AM-D0481 MF MDF WALNUT 18MM

Lab Specification Table

Worktop	<ul style="list-style-type: none"> 13mm SGL 16mm SGL 16mm SGL Plus 	<ul style="list-style-type: none"> Epoxy Resin jointed worktops Epoxy resin/ dogboned worktop joints Drip grooves to front edge of worktop
Upstand	<ul style="list-style-type: none"> 100mm in height, matching material. Optional 500mm splashback 	
Support frames	<ul style="list-style-type: none"> 2"x1" Steel tube Legs & rails 50mmx3mm steel fixing plates Steel triangular worktop fixings 	<ul style="list-style-type: none"> Powder coated finish M8 adjustable feet
Mobile Benching	<ul style="list-style-type: none"> Worktop to match spec choice 2"x1" steel tube frame 3" non marking metal/rubber casters (front pair braked) 	
Adjustable Height Benching	<ul style="list-style-type: none"> Removable manual mechanical mechanism 	
Cabinets (Static / Fitted)	<ul style="list-style-type: none"> 18mm MFMDf carcass/15mm MFC back (2mm PVC edge) Drawer box (15mm MFC panels) Hinges (optional softclose) 18mm MFMDf carcass/15mm MFC back (2mm PVC edge) 	<ul style="list-style-type: none"> Cam & doweled construction rebated back (split back in sink units to aid plumbing) Stainless Steel D handles Powdercoated metal plinth (overclad optional)
Cabinets (Mobile)	<ul style="list-style-type: none"> 18mm MFMDf carcass/15mm MFC back (2mm PVC edge) Drawer box (15mm MFC panels) Hinges (optional softclose) 18mm MFMDf carcass/15mm MFC back (2mm PVC edge) 	<ul style="list-style-type: none"> Cam & doweled construction rebated back Stainless Steel D handles 2" non marking castors (1 pair braked, 1 pair unbraked)
Reagent Shelving (Worktop Fixed)	<ul style="list-style-type: none"> Worksurface to match worktops 1" square steel construction Powder coated finish 	
Wall Mounted Shelving (Adjustable Spur Type)	<ul style="list-style-type: none"> 18mm MFMDf (2mm pvc edged) Adjustable height coated steel wall mounting brackets 	
Lockers	<ul style="list-style-type: none"> 18mm MFMDf carcass/15mm MFC back (2mm PVC edge) Lockable Cam & doweled construction rebated back 	<ul style="list-style-type: none"> Powdercoated metal plinth (overclad optional)
Write-up Desk	<ul style="list-style-type: none"> 18mm MFMDf construction Cam & doweled construction rebated back 2"x1" Steel tube Legs & rails metal frame (powdercoated) or height adjustable frame 	
Eye Wash Station	<ul style="list-style-type: none"> Removable top & lower panel for access to services Floor to ceiling available 3 x removable panels for access to services Constructed from 13-16mm SGL (to match your worktop choice) , timber frame structure for strength Cam & doweled construction 	

Glossary

Keyword / Phrase	Definition
Chipboard	Larger recycled wood particles pressed and glued together.
Mobile unit	A unit on castors that can be moved around. Great for creating flexible workspaces however cannot be levelled if the flooring is uneven.
Static unit	A unit that is not designed to be moved frequently. Can be levelled using adjustable feet once in location.
Fitted unit	A unit that is not designed to be moved at all. Can be floor or wall fixed (or both). Used to support worktops or tall cupboards tied back to ensure maximum rigidity.
Solid timber	A product made from raw softwood or hardwood material. These products in most cases will require a protective coating (varnish or paint) or regular waxing / oiling. Colour variations can be drastic between batches as this is a naturally grown material.
Timber batten	A fixing that can be used to tie back fitted units or worktops. Usually a long length screwed to a wall then bracketed from the underside (not usually seen once installed).
316 grade stainless steel	316 has very good chemical resistance compared to 304.
304 grade stainless steel	Most common austenitic stainless steel, higher melting point but less corrosive resistance compared with 316.
Chamfer	A method of removing a sharp edge by adding a small diagonal cut resulting in a softer more durable edge.
Bullnose	A large curve feature which also in its nature softens the edges of a panel or worktop.
Epoxy Resin	A chemical 2-part resin based solution that when mixed reacts irreversibly to seal and/or glue surfaces together.
Epoxy joint	A chemical resin based solution that when mixed reacts irreversibly to seal and/or glue surfaces together created by two chamfered joints which are filled.
Drip Groove	A small 'V' groove machined to the underside of a worktop. Designed to create a physical barrier in order to prevent liquids from running along the underside of a worktop onto the frames or furniture beneath. Commonly used in labs where the environment must be clean or where solutions can be dangerous.

Glossary

Keyword / Phrase	Definition
Painted	If we refer to something as painted it is generally 'wet painted' using our wet spray booth and qualified sprayer (unless otherwise stated). Most commonly we use acid cat or PU.
Powder coated	Powder coating is only possible on metallic items that can be baked to 200 degrees Celsius without warping or melting. Powder coating is much more durable than a wet paint for furniture frames / legs as it effectively created a hard protective shell.
Melamine faced	This is a durable paper print that is pre-pressed onto boards. Commonly mistaken or confused with a laminated face. More cost effective than laminating every surface although not as durable as a thin laminate facing.
Grain	The natural lines appear on wooden / wood effect panels. Some textures and patterns can also be grained. It is worth noting the board yield on a grained product is not as high as a plain colour so pricing is usually higher.
Laminated	When a core material has another surface / facing bonded to it. This is usually a thin piece of laminate (similar make up to SGL but a fraction of the thickness) or solid wood veneer. This is noticeable on most edges as you can see a small thin band of black / dark brown underneath the coloured surface. At Ambic we apply the facing using glue and our heated press facility to ensure maximum bond (no edges peeling).
Solid Grade Laminate	Not many people realise but SGL (Solid grade laminate) is actually a timber-based product. Made up of many thin layers pressed under a huge load and impregnated with resin.
Solid Surface	Unlike SGL which is designed around the laboratory / wetroom market Solid surface is known for its hygiene properties. Generally found in high end hospital / dental practices it is now popular in the kitchen industry too. Solid surface comes in sheet form but also has colour matched glues which allow Ambic to make worktops appear completely joint free. It is also possible to have worktops and splashbacks that flow freely into each other meaning no difficult corners to clean. Solid surface is also completely non porous meaning cleaning at a microbial level is easy enough. Ambic works with all the main solid surface suppliers ie Corian, Hi Macs, Staron, Avonite to name a few. This material also comes in a wide range of colours and very impressive a mimicking granite and other natural stone alternatives without the weight, it is designed to be impossible to stain and it can be repaired in most instances by cutting out a section and repairing with a patch or a simple sand back and polish.
Fibreboard	Very small wood particles pressed together to form a man made timber board. Ambic uses Chip3 and sustainably-sourced wood in all of our products.

Common Acronyms / Abbreviations

Keyword / Phrase	Definition
SGL	Solid Grade Laminate
MFMDf	Melamine faced medium density fibreboard
MRMDf	Moisture resistant medium density fibreboard
FRMDf	Fire resistant medium density fibreboard
MFC	Melamine faced chipboard
PVC	A synthetic thermoplastic, polyvinyl chloride.
PU	Polyurethane
316SS	A popular grade of stainless steel with qualities such as high strength, corrosion resistance, and high concentrations of chromium and nickel.
304SS	A grade of stainless steel. Higher melting point than 316 but less corrosion resistance.
RHS	Rectangular hollow section tubing
ERW	Electric resistance welding (a type of that is made from steel coil and the weld seam runs parallel to the pipe)
MIG	Metal inert gas (type of weld)
TIG	Tungsten inert gas (type of weld)





**BRITISH MADE FURNITURE
BUILT TO LAST**



Amanda Shepherd
Sales Director



Frances Condren
Senior Estimator



Tracey Hardman
Account Manager



Chris Gustafsson
Account Manager



Megan Dresser
Accounts / Sales

0191 389 1888

**sales@ambicmanufacturing.com
www.ambicmanufacturing.com**

**House of Ambic
Stella Gill Industrial Estate
Pelton Fell, Chester-le-Street
County Durham, DH2 2RN**