

WEST EDGE OPERA

FESTIVAL 2025 | AUGUST 2 - 17

OAKLAND SCOTTISH RITE CENTER



Dolores

DAVID & JONATHAN

WOZZECK

The Arts Thrive in Oakland

West Edge Opera is thrilled to welcome you to our home at the Oakland Scottish Rite Center, beautifully situated on Lake Merritt—a place where the energy, creativity, and history of Oakland come together.

West Edge Opera is just one part of the vibrant experience that is Oakland. Recognizing trends, we are now offering **Saturday Matinee performances** so that audiences can enjoy not only a dramatic show but can also explore what the city has to offer.

Oakland has been named the #1 food city in America. We would be remiss if we didn't encourage you to explore the award-winning cuisine worthy of a world-class city. Oakland's rich culture, stunning waterfront, and dynamic arts scene make it a place like no other, and we are honored to bring world-class opera to its heart.

For your convenience, there is secured covered parking available, along with a free shuttle to and from the theater, making for a seamless and stress-free experience.

Join us as we embrace the spirit of Oakland and revel in the power of opera together.

Brochure design: Cory Weaver

WEO Production Art: Cory Weaver

ALAMEDA COUNTY
ARTS COMMISSION

THE
AMPHION
FOUNDATION

CAROL FRANC BUCK
FOUNDATION

CALIFORNIA
ARTS COUNCIL

Wattis

the
PHYLLIS C. WATTIS
FOUNDATION



It's finally here! The world premiere of *Dolores* by Nicolás Lell Benavides and Marella Martin Koch, the first commission from our innovative COVID Project: Aperture. So many of you followed along, sheltered at home, peering at your screens, watching while the composers and librettists collaborated on these projects. I hope everyone who invested in Aperture will attend so that I can thank you personally. The production is sure to be an event, with Dolores Huerta herself, in attendance.

With the excitement of a world premiere, you would think we would present two other operas on a smaller scale. Think again. This is the most ambitious season we have ever presented: Marc-Antoine Charpentier's *David & Jonathan* is a story I've long wanted to tell. This French Baroque masterpiece is rarely done. Parts have been lost and the plot as printed is messy. I have re-arranged and fleshed out the story and music director Adam Pearl arranged the score to fit the stellar cast we have assembled. Bible scholars argue over the relationship of David and Jonathan. Good friends? Lovers? I take my cue from Charpentier, who in 1790 wrote music evocative of love. Most important to me is that this opera tells a love story between two men who faced incredible obstacles but their hearts remained faithful.

Ten years ago, we took a huge risk and presented Alban Berg's *Lulu* in an abandoned train station. It was the hottest ticket that summer – sold out with people begging to get in. We followed it up the next summer with Thomas Ades' *Powder Her Face*. This year we've reconnected a dream team of artists from those memorable productions for Berg's monumental *Wozzeck*. I look forward to seeing director Elkhannah Pulitzer's gripping production that will undoubtedly leave everyone breathless.

In a climate that is incredibly challenging for opera companies to thrive and survive, we are proud to have your trust and support in order to be able to create ambitiously with our eyes on growth and connection. It's all because of YOU, our incredible community.

Thank you and enjoy!
Mark Streshinsky



The Alice M. Ditson Fund



A decorative archway with intricate carvings, likely from a classical building, serves as a background for the top section of the poster.

WEST EDGE OPERA

Dolores

Saturday, August 2 • 2 PM

Sunday, August 10 • 2 PM

Saturday, August 16 • 8 PM

A close-up photograph of green ferns and small yellow flowers growing against a textured, brownish wall, positioned on the right side of the middle section.

DAVID & JONATHAN

Sunday, August 3 • 2 PM

Saturday, August 9 • 8 PM

Saturday, August 16 • 2 PM

WOZZECK

Saturday, August 9 • 2 PM

Thursday, August 14 • 8 PM

Sunday, August 17 • 2 PM

FESTIVAL 2025



Music by Nicolás Lell Benavides

Libretto by Marella Martin Koch

In English with English Surtitles

August 2, 10, & 16

Dolores Huerta is an iconic labor leader and activist who took on the fight for civil rights during the 1968 Delano Grape Strike. With Cesar Chavez and Larry Itliong, Huerta's tireless fight for workers' rights leads all the way to the White House.

Her resilience in the face of adversity, and her profound impact on social justice in America changed history, reminding us that the fight for justice is ongoing and that one person's courage can ignite a movement.



Nicolás Lell Benavides
Composer



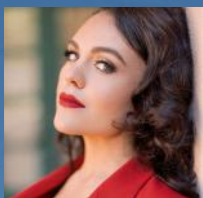
Marella Martin Koch
Librettist



Octavio Cardenas
Director



Mary Chun
Music Director



Kelly Guerra
Dolores Huerta



Philip Lopez
Cesar Chavez



Rolfe Daus
Larry Itliong



Alex Boyer
Bobby Kennedy



Sam Faustine
Tricky Dick



Chelsea Hollow
Helen Chavez/
Ethel Kennedy



Sergio Gonzalez
Juan Romero/
Journalist



HUELGA

World Premiere

Dolores

A West Edge Opera Commission

Co-commisioners: Opera Southwest, Broad Stage and San Diego Opera

DAVID & JONATHAN



Music by Marc-Antoine Charpentier (1688)

Libretto by Father François Bretonneau

In French with English Surtitles

August 3, 9 & 16

This biblical tragedy tells the timeless story of war and how it pushes us to struggle with fate, loyalty, and the tragic conflict between love and duty.

This rarely performed gem brings to life another side of David, whom we know to have slain Goliath, and the romantic love shared between him and Jonathan, son of King Saul.



Mark Streshinsky
Director



Adam Pearl
Music Director



Benjamin Freedman
Choreographer



Aaron Sheehan
Jonathan



Derek Chester
David



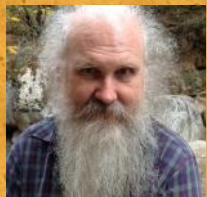
Matthew Worth
Saul



Laurel Semerdjian
Witch of Endor



Wilford Kelly
Achis



Richard Mix
Ghost of Samuel

Music and Libretto by Alban Berg (1922)

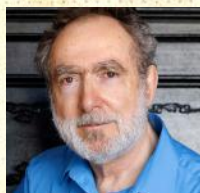
In German with English Surtitles

August 9, 14 & 17

Based on Georg Büchner's play *Woyzeck*, Berg's opera is a harrowing and brilliant critique of the cycles of suffering imposed by systems of power, laced with moments of wry humor that expose the absurdity of human folly. It reveals how decisions driven by war, greed, and disregard for human lives cascade downward, devastating the less fortunate while reflecting on universal struggles that resonate across time. Berg's expressionist opera is acknowledged as the most important of the early 20th century.



Elkhanah Pulitzer
Director



Jonathan Khuner
Music Director



Hadleigh Adams
Woyzeck



Emma McNairy
Marie



Philip Skinner
Doctor



Michael Belle
Drum Major



Spencer Hamlin
Captain



Chad Somers
Andres



Silvie Jensen
Margret



WOZZECK





Support West Edge Opera with the Platinum Experience

With a Platinum Ticket, You Enjoy:

Front of house and centered seating with stellar acoustics and
optimal sight lines for our signature innovative staging...

Access to the Donor Lounge at intermission, including light fare
and premier wine offerings...

All while supporting West Edge Opera

Series Ticket: \$435

Single Ticket: \$170

2025 Series Packages

Series A: Openings

Saturday, Aug 2, 2:00

Sunday, Aug 3, 2:00

Saturday, Aug 9, 2:00

Series D: Evenings

Saturday, Aug 9, 8:00

Thursday, Aug 14, 8:00

Saturday, Aug 16, 8:00

Series B: Saturday Matinees

Saturday, Aug 2, 2:00

Saturday, Aug 9, 2:00

Saturday, Aug 16, 2:00

Series E: Third Weekend

Saturday, Aug 16, 2:00

Saturday, Aug 16, 8:00

Sunday, Aug 17, 2:00

Series C: Sunday Matinees

Sunday, Aug 3, 2:00

Sunday, Aug 10, 2:00

Sunday, Aug 17, 2:00

Series F: Make Your Own

Choose any dates to see all
three operas



2025 Series Tickets

SERIES TICKETS ON SALE **APRIL 1**

Platinum Series	\$435
Gold Series	\$330
Silver Series	\$144
Bronze Series	\$60
Parking per series	\$30

SINGLE TICKETS ON SALE **JUNE 1**
online and by phone.

Platinum Seats	\$170
Gold Seats	\$130
Silver Seats	\$54
Bronze Seats	\$20
Rush-Day of Show	\$10
Parking	\$10

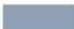




 **Or stairs too difficult for you?**

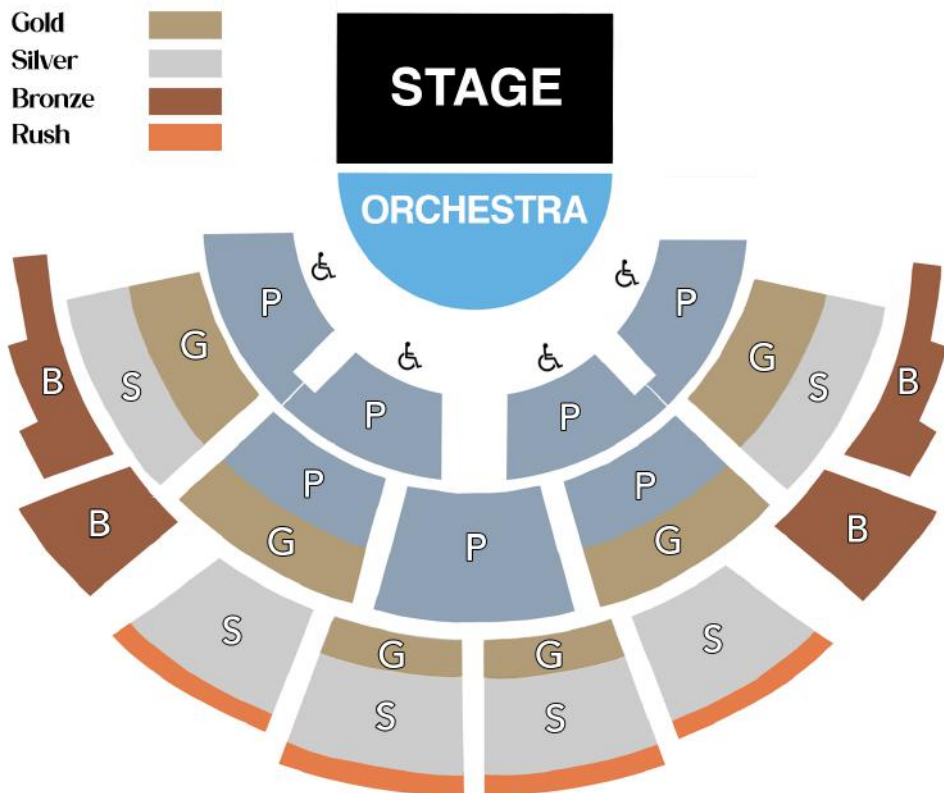
Accessible seating with a level entrance is available at both Silver and Platinum price levels. Please contact us to arrange:
boxoffice@westedgeopera.org

THREE WAYS TO ORDER

ONLINE	WESTEDGEOPERA.ORG
PHONE	(510) 841-1903
MAIL	1700 Shattuck Avenue #312 Berkeley, CA 94709

*Please fill out the form on the next page
Fees waived for mail orders*

Platinum	
Gold	
Silver	
Bronze	
Rush	



Thank you for being part of the West Edge Opera family.

Ticket sales account for only about 30% of the cost to mount these productions.
Please consider a tax-deductible donation to West Edge Opera with your ticket order.

Use this form for Series Ticket purchases only.
Single tickets may be purchased online and by phone

Series Tickets	Series Letter	Quantity	\$ Amount
Platinum	<div><div></div><div></div></div>	<div><div></div><div></div></div>	<div><div>\$435</div><div>=</div><div>\$</div><div></div></div>
	<div><div><input type="radio"/> Best available in section</div><div><input type="radio"/> Call me for my seating preference</div></div>		
Gold	<div><div></div><div></div></div>	<div><div></div><div></div></div>	<div><div>\$330</div><div>=</div><div>\$</div><div></div></div>
	<div><div><input type="radio"/> Best available in section</div><div><input type="radio"/> Call me for my seating preference</div></div>		
Silver	<div><div></div><div></div></div>	<div><div></div><div></div></div>	<div><div>\$144</div><div>=</div><div>\$</div><div></div></div>
	<div><div><input type="radio"/> Best available in section</div><div><input type="radio"/> Call me for my seating preference</div></div>		
Bronze	<div><div></div><div></div></div>	<div><div></div><div></div></div>	<div><div>\$60</div><div>=</div><div>\$</div><div></div></div>
	<div><div><input type="radio"/> Best available in section</div><div><input type="radio"/> Call me for my seating preference</div></div>		
Parking	<div><div></div><div></div></div>		<div><div>\$30</div><div>=</div><div>\$</div><div></div></div>
	<div><div><input type="radio"/> Per series</div></div>		

Tax Deductible Gift (Thank you!) \$

For **Series F** patrons, select dates: **TOTAL** \$

Dolores	<input type="radio"/> Sat. Mat., 08/02	<input type="radio"/> Sun. Mat., 08/10	<input type="radio"/> Sat. Eve., 08/16
David & Jonathan	<input type="radio"/> Sun. Mat., 08/03	<input type="radio"/> Sat., Eve., 08/09	<input type="radio"/> Sat. Mat., 08/16
Wozzeck	<input type="radio"/> Sat. Mat., 08/09	<input type="radio"/> Thurs. Eve., 08/14	<input type="radio"/> Sun. Mat., 08/17

Contact me about accessible seating

Payment Information

<input type="radio"/> Check Enclosed	<input type="radio"/> Visa	<input type="radio"/> Mastercard	<input type="radio"/> Discover	<input type="radio"/> Amex
Payable to West Edge Opera	Please write card information below.			

Name			
Address		Phone	
City		State	Zip
Card No.		CVV	Exp
Email			

I hereby authorize West Edge Opera to charge my card accordingly.	Signature
---	-----------

cut here

Mark Streshinsky
General Director

Jonathan Khuner
Music Director

West Edge Opera
1700 Shattuck Avenue #312
Berkeley, CA 94709



Nonprofit Org.
U.S. Postage PAID
San Francisco CA
Permit No. 925