

THE PENTHOUSE COLLECTION

Nº 26

VISTA

NORTHLIFFE • GOLD COAST



EXECUTIVE SUMMARY

PROJECT NAME

26 Vista, The Penthouse Collection

PROJECT LOCATION

26 Vista Street, Northcliffe QLD 4217

DISTANCE FROM CBD

6 km to Southport CBD

DEVELOPER

MRCB International

ARCHITECT

DBI

KEY FEATURES

- Swimming Pool, Spa, Outdoor Lounge Areas
- BBQ Facility, Residents Lounge
- Gym, Sauna, Steam Room
- Yoga Deck, Cinema Room, Games Room
- Hotel-style port cochère and 5-star lobby
- Level 51 Residents Indoor & Outdoor Lounge
- Level 51 Plunge Pool
- Reverse cycle ducted air-con



VISTA

BROADBEACH

NORTHCLIFFE

SURFERS PARADISE

MAIN BEACH

JEWEL

ROMA PARK

ISLE OF CAPRI

NERANG RIVER

HOTA

Q1



THE LIVING AREA



LIVING & DINING





LOUIS VUITTON

THE BATHROOM



THE MASTER BEDROOM






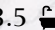
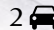
THE PENTHOUSE COLLECTION

Nº 26

VISTA

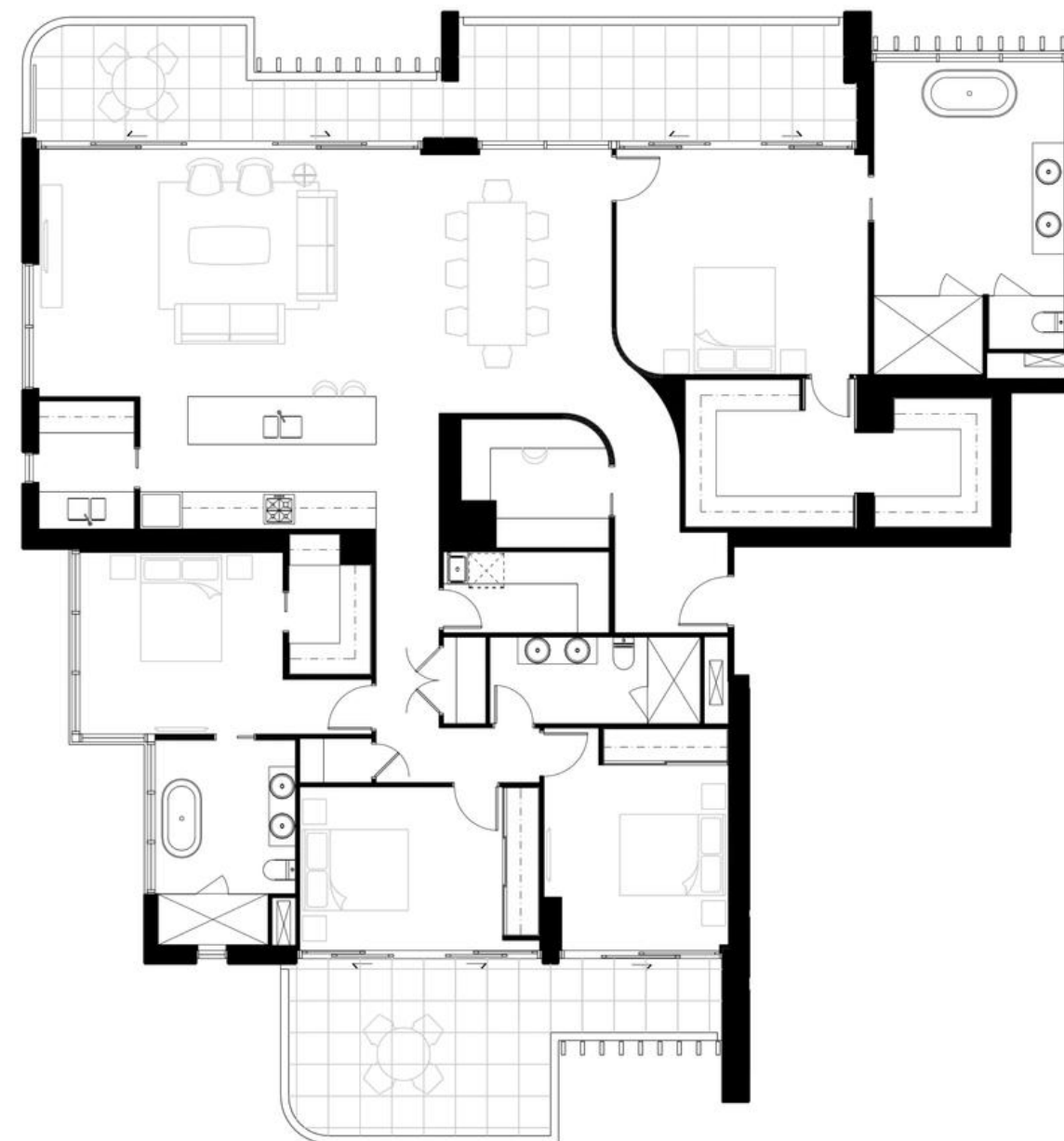
NORTHCLIFFE • GOLD COAST

\$7,958,000

4  3.5  2 

INTERNAL 242 M²
EXTERNAL 56 M²
TOTAL 298 M²

LEVEL 47



LOT NUMBERS

4701



Disclaimer:

Please note that this floor plan is a guide only and was prepared prior to completion. The information contained herein is believed to be correct but it is not guaranteed. Dimensions are approximate. Changes may be made during the development. All dimensions, areas, fittings and applications may be subject to change without notice in accordance with the provisions of contract of sale. Prospective purchasers may rely on their own enquiries.


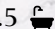
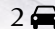
THE PENTHOUSE COLLECTION

Nº 26

VISTA

NORTHCLIFFE • GOLD COAST

\$8,245,000

4  3.5  2 

INTERNAL 223 M²
EXTERNAL 118 M²
TOTAL 341 M²

LEVEL 47



Disclaimer:

Please note that this floor plan is a guide only and was prepared prior to completion. The information contained herein is believed to be correct but it is not guaranteed. Dimensions are approximate. Changes may be made during the development. All dimensions, areas, fittings and applications may be subject to change without notice in accordance with the provisions of contract of sale. Prospective purchasers may rely on their own enquiries.



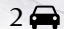
THE PENTHOUSE COLLECTION

Nº 26

VISTA

NORTHCLIFFE • GOLD COAST

\$8,101,000

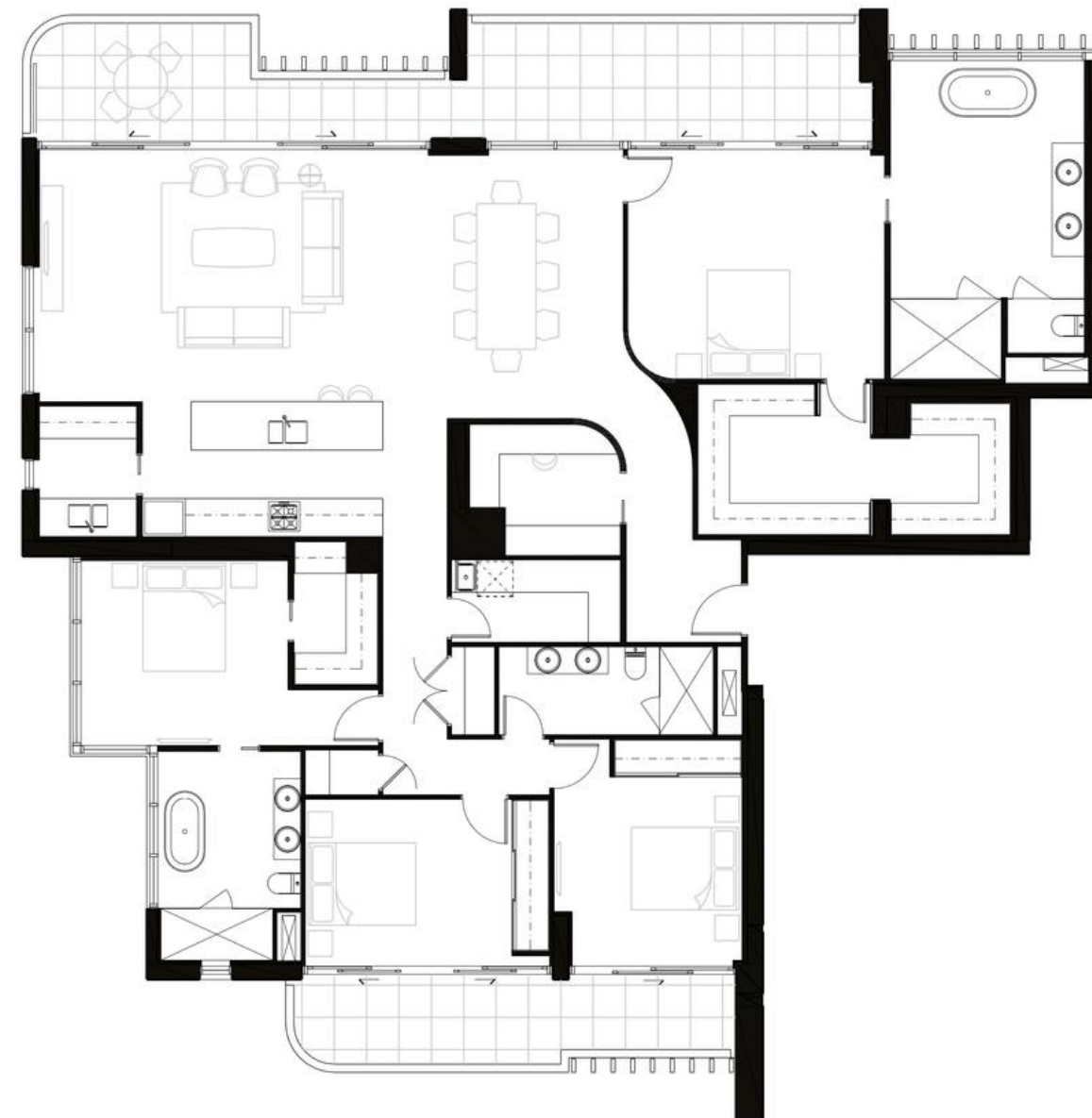
4  3.5  2 

INTERNAL 242 M²

EXTERNAL 47 M²

TOTAL 289 M²

LEVEL 48



LOT NUMBERS

4801 5001

4901



Disclaimer:

Please note that this floor plan is a guide only and was prepared prior to completion. The information contained herein is believed to be correct but it is not guaranteed. Dimensions are approximate. Changes may be made during the development. All dimensions, areas, fittings and applications may be subject to change without notice in accordance with the provisions of contract of sale. Prospective purchasers may rely on their own enquiries.


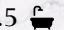
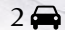
THE PENTHOUSE COLLECTION

Nº 26

VISTA

NORTHCLIFFE • GOLD COAST

\$7,384,000

4  3.5  2 

INTERNAL 223 M²
EXTERNAL 44 M²
TOTAL 267 M²

LEVEL 48



LOT NUMBERS

4802
4902
5002



Disclaimer:

Please note that this floor plan is a guide only and was prepared prior to completion. The information contained herein is believed to be correct but it is not guaranteed. Dimensions are approximate. Changes may be made during the development. All dimensions, areas, fittings and applications may be subject to change without notice in accordance with the provisions of contract of sale. Prospective purchasers may rely on their own enquiries.



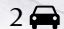
THE PENTHOUSE COLLECTION

Nº 26

VISTA

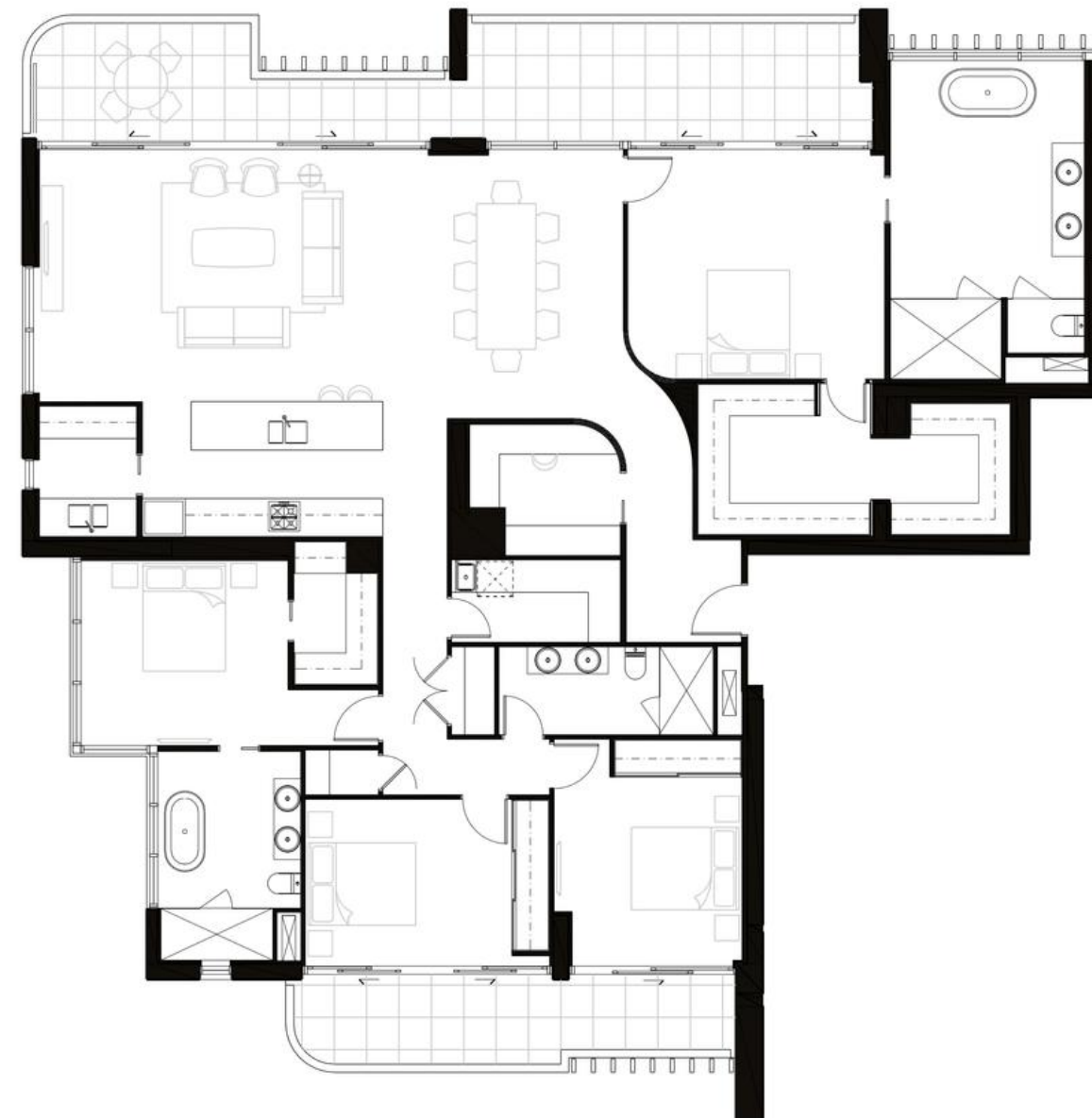
NORTHCLIFFE • GOLD COAST

\$8,245,000

4  3.5  2 

INTERNAL 242 M²
EXTERNAL 47 M²
TOTAL 289 M²

LEVEL 49



LOT NUMBERS

4801 5001
4901



Disclaimer:

Please note that this floor plan is a guide only and was prepared prior to completion. The information contained herein is believed to be correct but it is not guaranteed. Dimensions are approximate. Changes may be made during the development. All dimensions, areas, fittings and applications may be subject to change without notice in accordance with the provisions of contract of sale. Prospective purchasers may rely on their own enquiries.


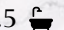
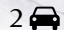
THE PENTHOUSE COLLECTION

Nº 26

VISTA

NORTHCLIFFE • GOLD COAST

\$7,528,000

4  3.5  2 

INTERNAL 223 M²
EXTERNAL 44 M²
TOTAL 267 M²

LEVEL 49



LOT NUMBERS

4802
4902
5002



Disclaimer:

Please note that this floor plan is a guide only and was prepared prior to completion. The information contained herein is believed to be correct but it is not guaranteed. Dimensions are approximate. Changes may be made during the development. All dimensions, areas, fittings and applications may be subject to change without notice in accordance with the provisions of contract of sale. Prospective purchasers may rely on their own enquiries.


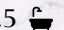
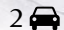
THE PENTHOUSE COLLECTION

Nº 26

VISTA

NORTHCLIFFE • GOLD COAST

\$10,250,000

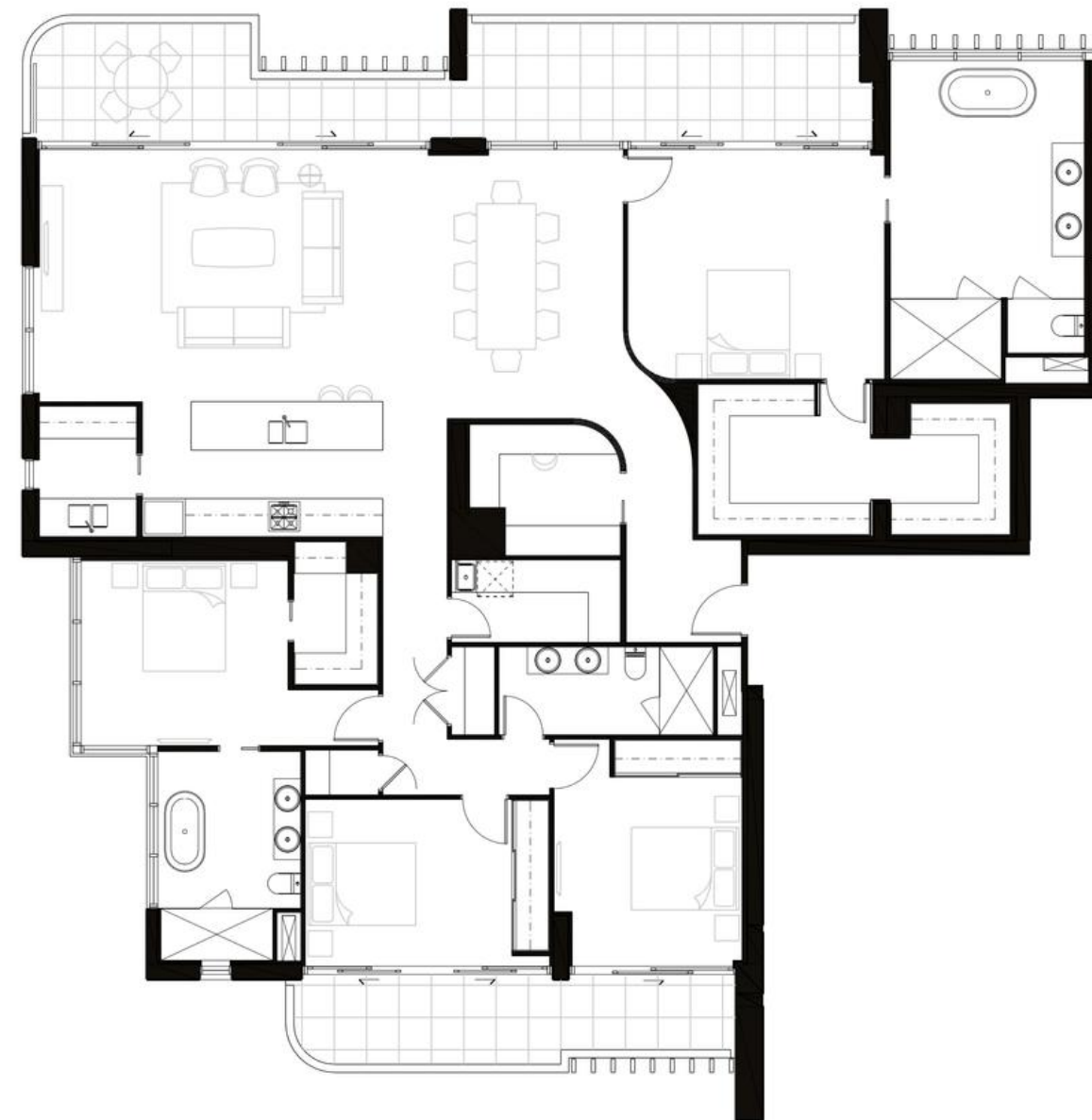
4  3.5  2 

INTERNAL 242 M²

EXTERNAL 47 M²

TOTAL 289 M²

LEVEL 50



LOT NUMBERS

4801 5001

4901



Disclaimer:

Please note that this floor plan is a guide only and was prepared prior to completion. The information contained herein is believed to be correct but it is not guaranteed. Dimensions are approximate. Changes may be made during the development. All dimensions, areas, fittings and applications may be subject to change without notice in accordance with the provisions of contract of sale. Prospective purchasers may rely on their own enquiries.


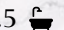
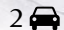
THE PENTHOUSE COLLECTION

Nº 26

VISTA

NORTHCLIFFE • GOLD COAST

\$10,250,000

4  3.5  2 

INTERNAL 223 M²

EXTERNAL 44 M²

TOTAL 267 M²

LEVEL 50



LOT NUMBERS

4802

4902

5002



Disclaimer:

Please note that this floor plan is a guide only and was prepared prior to completion. The information contained herein is believed to be correct but it is not guaranteed. Dimensions are approximate. Changes may be made during the development. All dimensions, areas, fittings and applications may be subject to change without notice in accordance with the provisions of contract of sale. Prospective purchasers may rely on their own enquiries.

LEVEL 4 POOL



THE GYM



OUTDOOR DINING



LEVEL 51 PLUNGE POOL



LEVEL 51 ROOFTOP



LEVEL 51 LOUNGE



INDOOR LOUNGE





PROJECT
TEAM

DEVELOPER

Proudly brought to you by the world's leading urban developer of integrated commercial and residential developments. MRCB International is a wholly owned subsidiary of MRCB Malaysia, a company listed on the Malaysian stock exchange. With over 50 years of experience, MRCB is a property and infrastructure development group with interests in commercial, residential and industrial real estate development, renewable energy as well as large-scale infrastructure projects. A pioneer in innovative technology, sustainability and design, MRCB's expansive portfolio of work includes large-scale civil engineering projects across a multitude of countries as well as a growing pipeline of developments in Australia and New Zealand. MRCB has successfully delivered Easton Burwood (2017) and 1060 Carnegie (2020), both apartment developments in Melbourne, and was awarded a Transit-Oriented Development (TOD) project in Auckland The Symphony Centre, scheduled to begin in 2024. VISTA marks MRCB's first Queensland project, with the ambitious project set to continue the legacy of upscale work.

MRCB

ARCHITECTS

DBI enjoys an international reputation as a result of over 42 years of major project delivery, within the disciplines of Architecture, Interior Design, Landscape Architecture, Master Planning and Urban Design, among others. DBI is proud of its ability to deliver world-leading design innovation within these disciplines and is committed to its position at the forefront of international design innovation. It has consequently won international design awards in recognition of the achievement of design excellence. In addition to its impressive track record for the successful delivery of numerous large-scale projects, DBI is now a leader in Tall (+100m) and Super Tall (+300m) building design and construction and is a recognised leader in sustainable high-rise technology.

DBI

A nighttime cityscape featuring a prominent modern penthouse building in the foreground. The building has a curved facade with vertical slats and large glass windows that are illuminated from within, showing interior furniture and plants. The background shows a dense urban skyline with various skyscrapers, some with distinctive lighting, under a dark sky filled with stars.

THE PENTHOUSE COLLECTION

Nº 26

VISTA

NORTHCLIFFE • GOLD COAST