

BRINGING



TO ALL

 **Ascension  
DePaul Services**

Serving San Antonio Since 1958

# BEYOND BACKPACKS



## PARTNERSHIP OPPORTUNITIES

# MORE THAN THE FIRST DAY OF SCHOOL



## WHY IT MATTERS

Every August, children across San Antonio prepare to walk through school doors filled with hope and possibility. For many families, however, the new school year begins with anxiety – wondering how to afford school clothes, shoes, hygiene essentials, or even the basics needed to feel confident in the classroom.

Beyond Backpacks was created to meet that moment.

What began over 30 years ago as a back-to-school distribution has evolved into something much deeper. Yes, we equip students with personalized backpacks, clothing, shoes, and school supplies. But more importantly, we use this moment as a gateway – connecting families to year-round support that strengthens stability long after the first school bell rings.

Through our integrated model of Early Education, Family Health, and Social Services, families gain access to food assistance, utility support, affordable medical and dental care, mental health counseling, early childhood education, and ongoing case management. **Beyond Backpacks is not a one-day event. It is an entry point into sustained care.**

In 2025, we equipped 545 students. In 2026, our goal is 600 children – each one supported not only with essentials, but with dignity, belonging, and connection to long-term resources.

When you partner with Ascension DePaul Services, you are not simply filling a backpack.

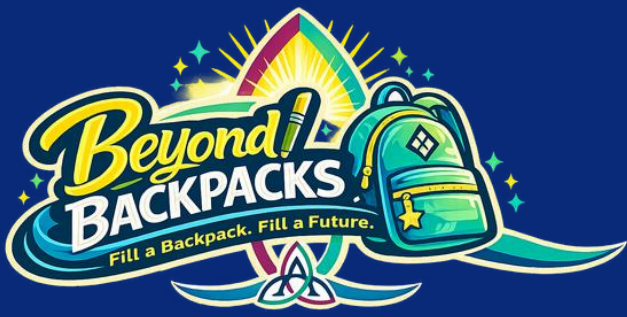
**You are fueling a future.**

**You are strengthening families.**

**You are investing in a community.**

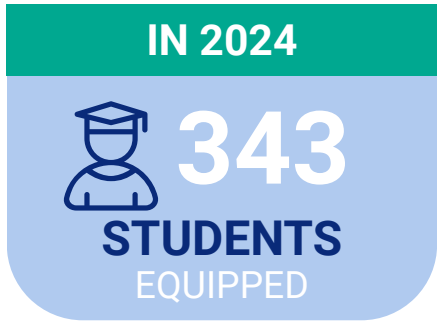
And you are helping answer God's call to bring health, healing, and hope to all.

**BRINGING HEALTH, HEALING, & HOPE TO ALL**

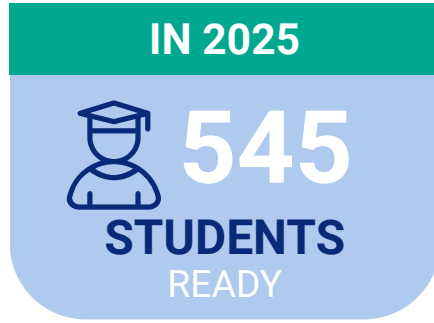


# FILL A BACKPACK FILL A FUTURE

ONE MISSION. ONE COMMUNITY.



+



+



## ASCENSION DEPAUL SERVICES IN 2025

MORE  
THAN

**10,000**



NEIGHBORS SERVED

&

**60,000**



SERVICES DELIVERED

## BEYOND THE BACKPACK: MORE THAN THE FIRST DAY OF SCHOOL



It is a **gateway into year-round support** for children and families experiencing hardship.

Through an **integrated service model**, families can access the tools and support they need not only to start strong, but move toward greater stability.

### EARLY EDUCATION

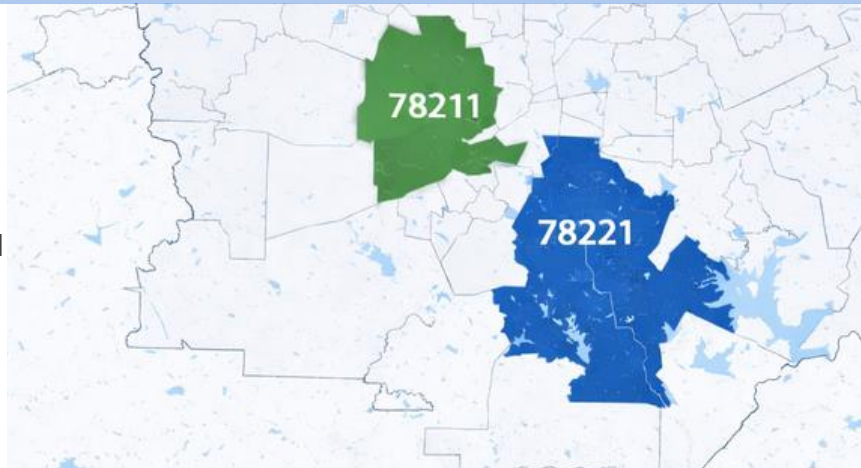
Accredited early education programs preparing children for success

### FAMILY HEALTH

Expanding access to care: primary, dental & behavioral healthcare

### SOCIAL SERVICES

Delivering assistance with food, clothing, and basic necessities

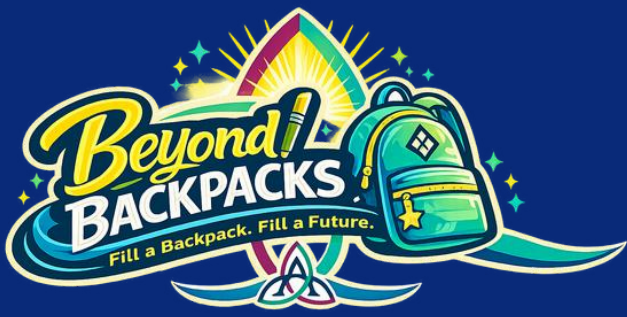


Connecting families in 78221, 78211, and beyond to the support they need to learn, grow, and thrive.



Ascension DePaul Services

7607 Somerset Rd, San Antonio, TX 78211 | 210-334-2300 | giving@adssa.org



# PARTNERSHIP OPPORTUNITIES

ONE MISSION. ONE COMMUNITY.

Your sponsorship\* goes beyond backpacks – connecting families to the essential resources that create stability, dignity, and hope year-round.

**\$25K**

## FUELING FUTURES PARTNER

Underwrites year-round stability for families beyond the first school bell.

Impact Snapshot: Helps distribute over 125,000 lbs. of food to families experiencing hardship.

**\$10K**

## STABILITY BUILDER

Strengthens the foundation children need to thrive year-round.

Impact Snapshot: Provides 250 dental exams and consultations for uninsured patients.

**\$5K**

## DIGNITY CHAMPION

Invests in mental wellness and long-term family resilience.

Impact Snapshot: Equips 300+ families with hygiene essentials and clothing.

**\$3K**

## WELLNESS ADVOCATE

Expands access to affordable, preventative medical care.

Impact Snapshot: Supports 120 counseling sessions for individuals and families in crisis.

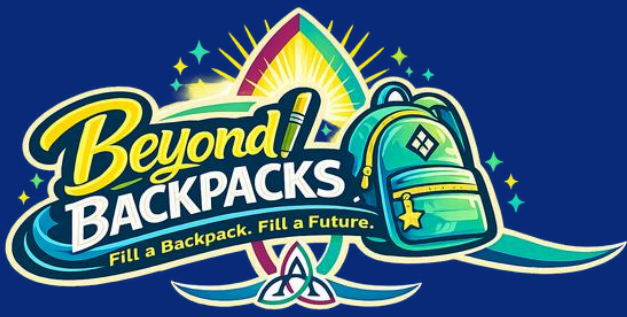
**\$2K**

## COMMUNITY CATALYST

Expands access to affordable, preventative medical care.

Impact Snapshot: Provides medical care for 40 patients lacking access to affordable healthcare.

\*A sponsorship model designed for impact – not overhead. *These sponsorship opportunities are 100% tax deductible.*



# PARTNERSHIP OPPORTUNITIES

ONE MISSION. ONE COMMUNITY.

**EXPERIENCE THE IMPACT:  
SEE WHAT PARTNERSHIPS MAKE POSSIBLE**

SCAN TO EXPERIENCE THE  
**ENERGY**, THE **JOY**, AND THE  
LASTING **IMPACT** YOUR  
PARTNERSHIP MAKES  
POSSIBLE.



[CLICK](#)  
[TO](#)  
[WATCH](#)



## 2025 Impact

- 1 Day | 554 Children Served
- 97 Volunteers | 625 Service Hours
- 150 Individual Donors
- Families connected to year-round food, healthcare, and social services

## IMAGINE THE POSSIBILITIES...

*In 2026, we aim to serve 600 children and expand access to year-round support.*

# PARTNERSHIP RECOGNITION

## EXCLUSIVE RECOGNITION

Benefit	\$25K	\$10K	\$5K	\$3K	\$2K
<b>Exclusive</b> Title Partner	INCLUDED	—	—	—	—
<b>Exclusive</b> Student Bin Branding	INCLUDED	—	—	—	—
Premier Logo Placement	INCLUDED	INCLUDED	—	—	—
<b>Exclusive</b> Video Representation	INCLUDED	—	—	—	—

## EVENT-DAY RECOGNITION

Logo on Event Signage	INCLUDED	INCLUDED	INCLUDED	INCLUDED	Name Only
Logo on Printed Event Collateral	INCLUDED	INCLUDED	—	—	—
Verbal Recognition	INCLUDED	—	—	—	—

## DIGITAL RECOGNITION

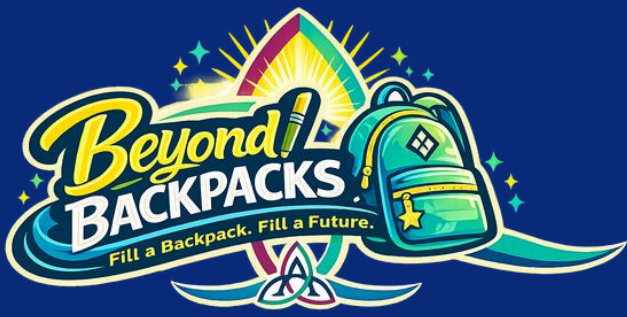
Website Logo + Hyperlink	INCLUDED	INCLUDED	INCLUDED	INCLUDED	Name Only
<b>Exclusive</b> Social Media Feature	INCLUDED	—	—	—	—
Tiered Social Media Feature	INCLUDED	INCLUDED	INCLUDED	INCLUDED	Name Only

## ENGAGEMENT OPPORTUNITIES

On-Site Activity & Promo Table	INCLUDED	INCLUDED	INCLUDED	INCLUDED	—
Volunteer Engagement	INCLUDED	INCLUDED	INCLUDED	INCLUDED	—
Giveaway Opportunity	INCLUDED	INCLUDED	INCLUDED	INCLUDED	—

## POST-EVENT RECOGNITION

Featured Logo in Recap Summary	INCLUDED	INCLUDED	—	—	—
Logo Recognition in Newsletter	INCLUDED	INCLUDED	INCLUDED	INCLUDED	Name Only
Featured Logo in Impact Report	INCLUDED	INCLUDED	INCLUDED	INCLUDED	Name Only



# PARTNERSHIP OPPORTUNITIES

ONE MISSION. ONE COMMUNITY.

## Beyond Backpacks: Your Partnership in Action

On Beyond Backpacks Day, our campus transforms into a vibrant community hub – serving children and families with school supplies, food support, wellness services, haircuts, books, fun activities and encouragement as they prepare for a new school year.

Below are just a few of the many ways partners are recognized throughout the event.



Supply Distribution Branding



Event Activity Zone Recognition



Resource Distribution Branding



Event Day Signage



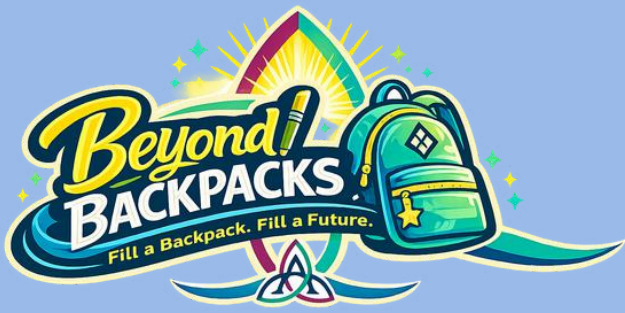
Community Activity & Engagement Tables

Interested in employee engagement or custom community activations? Contact us as [giving@adssa.org](mailto:giving@adssa.org)



Ascension DePaul Services

7607 Somerset Rd, San Antonio, TX 78211 | 210-334-2300 | [giving@adssa.org](mailto:giving@adssa.org)



# PARTNER COMMITMENT FORM

## THANK YOU FOR YOUR PARTNERSHIP

### PARTNER INFORMATION

Name

Recognition should read

Phone

Email

Mailing Address

Website

Social Handle

Social Handle 2

### LEVEL OF SUPPORT *(Please select one)*

**Fueling Futures**  
\$25,000

**Stability Builder**  
\$10,000

**Dignity Champion**  
\$5,000

**Wellness Advocate**  
\$3,000

**Community Catalyst**  
\$2,000

**DOUBLE MY DONATION: DOUBLE THE IMPACT—DOUBLE YOUR BENEFITS W/ SENIOR CHRISTMAS: HOLIDAY EVENT**

**\$200 PROVIDES ONE CHILD IN NEED WITH A PERSONALIZED SCHOOL BIN:** I'd like to make a donation \$\_\_\_\_\_

**Total Donation Amount** \$\_\_\_\_\_

### PAYMENT METHOD

Credit Card

Name

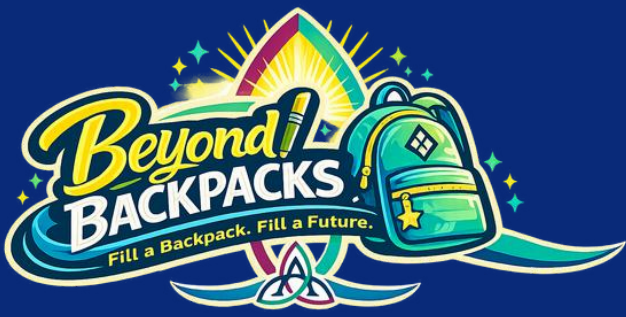
Date

Check payable to  
**Ascension DePaul Services**

Signature



**Ascension DePaul Services**



# PARTNER COMMITMENT FORM

## TWO WAYS TO REGISTER:

1

**Mail Commitments and Donations to:**  
**Ascension DePaul Services**  
**7607 Somerset Road**  
**San Antonio, TX 78211**  
**Memo: Beyond Backpacks**

2

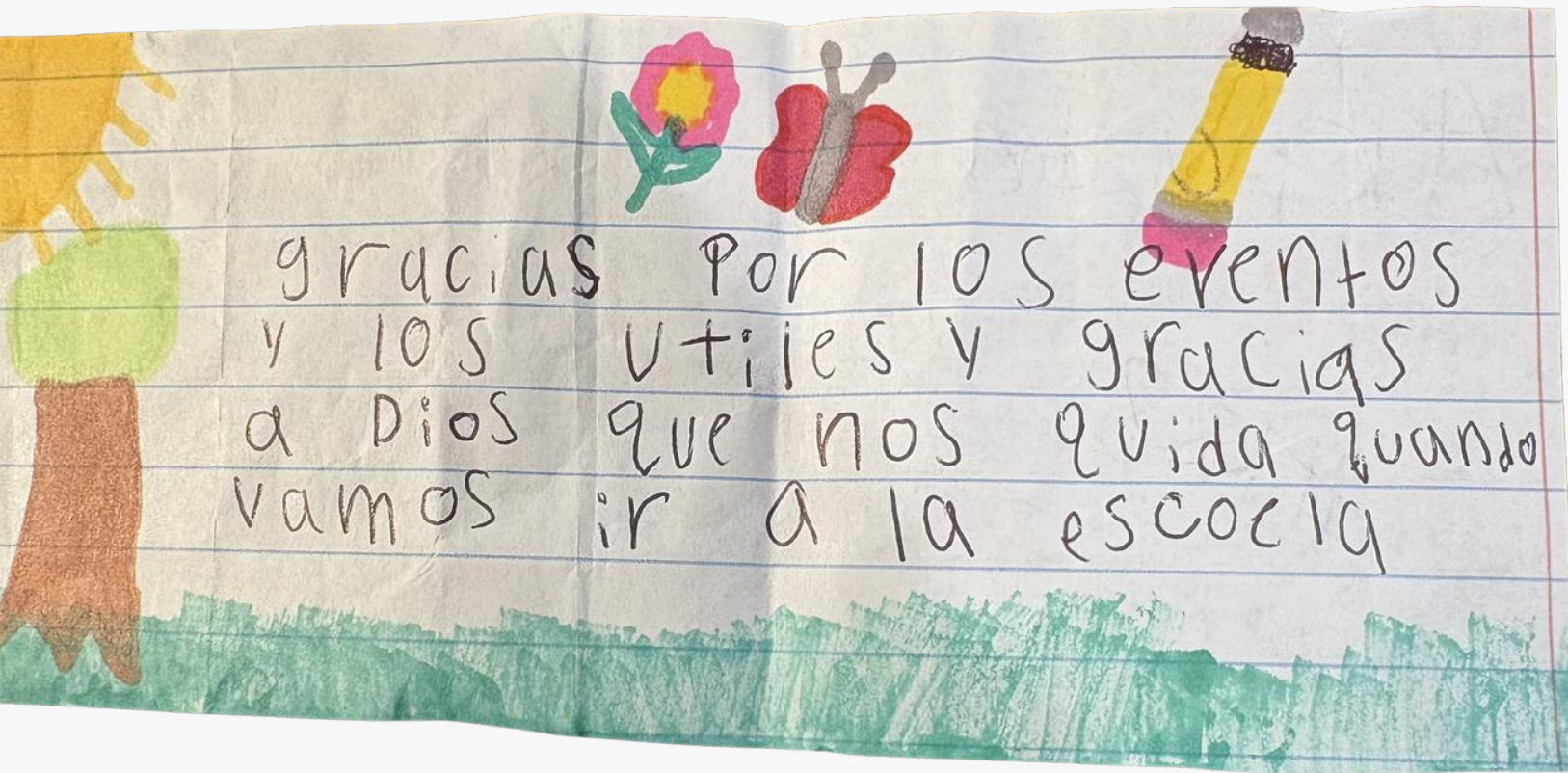
**Scan the QR Code or [Click Here](#)**  
**to Register and Make Online Donations:**



*\*A sponsorship model designed for impact – not overhead. These sponsorship opportunities are 100% tax deductible.*

# BEYOND BACKPACKS

68 Years of Love in Action



*Translation: "Thank you for the events and the school supplies, and thank God who takes care of us when we go to school."*



[Give Hope](#)

**A LEGACY  
OF LOVE IN  
ACTION**



**Ascension DePaul Services**

7607 Somerset Rd, San Antonio, TX 78211 | 210-334-2300 | [giving@adssa.org](mailto:giving@adssa.org)