



Lifelong
Learning

JUNE 4-12, 2025

with optional
Amazon Post-Tour

MYSTERIES OF PERU AND MACHU PICCHU

Orbridge

W&L Lifelong Learning

Dear W&L Alumni, Parents, and Friends,

From the Sacred Valley of the Inca and the magical heights of Machu Picchu to the natural wonders of the Ballestas Islands, we cordially invite you to join us as we uncover the rich culture of Peru. This extraordinary journey offers a glimpse of Peru's enduring charm, centuries-old traditions, and enigmatic mysteries taking us from the breathtaking views of the high Andes to the coastal splendor of Paracas.

Savor authentic flavors, textures, and aromas of Peruvian cuisine, from perfectly crafted ceviche to lomo saltado, a fusion of Chinese and Peruvian cuisine. Interact with the complex history of the Inca Empire and hear its legacy in local Quechua language. Visit the archaeological sanctuary of Sacsayhuaman, built in the 15th century at an elevation of over 12,000 feet above sea level, and learn about the people who performed religious ceremonies there.


Take flight over the Nazca Lines during an exciting optional excursion—a unique opportunity to get an aerial view of geoglyphs believed to have been carved over 2000 years ago for ritual purposes.

Space is limited. With significant savings of more than \$1,000 per couple, we anticipate this tour will fill quickly. For the ease of reserving your space online, please visit our website <https://go.wlu.edu/secretsofperu>, or call (540) 458-8723. You may also email the attached reservation form to lifelong@wlu.edu.

Sincerely,



Ruth Candler
Associate Director, W&L Lifelong Learning

 Orbridge takes seriously the responsibility to minimize our global environmental impact. Each year we plant 100,000 trees in U.S. State Forests with afforestation needs as an ongoing initiative among our evolving sustainability efforts. Learn more at orbridge.com/going-green.

Mysteries of Peru | Itinerary and Highlights (subject to change)

Day 1: EN ROUTE FROM U.S. | ARRIVE IN

LIMA, PERU Upon arrival to Lima's Jorge Chavez International Airport an Orbridge representative will be waiting to assist with your transfer to the hotel. Later witness the enchanting Magic Water Circuit at Parque de la Reserva, an expansive park within the city. This evening gather with fellow travel companions for a welcome dinner.
Overnight: Hotel Estelar Miraflores (D)

Day 2: LIMA Today enjoy a guided city tour and market visit plus a cooking class to learn the tips and techniques of crafting traditional Peruvian dishes and the refreshing Pisco sour cocktail. Have a mid-day lunch featuring traditional Peruvian cuisine at a local restaurant. Later explore the extensive collection of ceramics, fabrics and precious metals at the Larco Museum.
Overnight: Hotel Estelar Miraflores (B,L)

Day 3: LIMA | FLIGHT TO CUSCO | SACRED VALLEY After breakfast return to the airport for the brief flight to Cusco. Arriving at Alejandro Velasco Astete International Airport, board the group transfer to your hotel. Later today visit the Yucay Museum of Living Culture for a guided visit. The evening is at leisure.
Overnight: Sonesta Posada Yucay (B,L)

Day 4: SACRED VALLEY | MACHU PICCHU | SACRED VALLEY | CUSCO Early this morning depart for the Ollantaytambo train station to board the Vistadome train to Aguas Calientes. The journey through breathtaking landscapes is a treat in itself, with panoramic windows framing nature's majesty. Disembark the train for a bus ride up the mountain. Lunch will be at the Machu Picchu Sanctuary Lodge followed by guided exploration of the ruins. In the afternoon return to the Vistadome train for the return to Cusco.
Overnight: Aranwa Cusco (B,L)

Day 5: CUSCO Set out on a city tour to discover the archaeological sites of Sacsayhuaman and Qorikancha (Temple of the Sun), followed by a visit to colorful San Pedro market. Lunch is at Villa Tipon featuring a traditional Pachamama ceremony (offering to the Earth) and a live music performance. Afterward visit a local artisan chocolate shop for an engaging tour and tasting.
Overnight: Aranwa Cusco (B,L)

Day 6: CUSCO | FLIGHT TO LIMA | PARACAS Following breakfast and the return flight to Lima, take the approximate 3.5-hour drive to the coastal town of Paracas. Check into your hotel and unwind before rejoining the group for a presentation on the Nazca Lines and pre-Incan history and cultures. The remainder of the day and evening are at leisure to enjoy the luxurious hotel amenities.
Overnight: La Hacienda Bahía Paracas (B,L)

Day 7: PARACAS | ICA | PARACAS This morning includes an optional excursion to fly over the Nazca Lines during a 90-minute aerial tour. Later, set off towards Ica for an exciting open-air dune buggy adventure through the sand dunes, including a visit to a winery followed by a beautiful sunset picnic dinner.
Overnight: La Hacienda Bahía Paracas (B,D)

Day 8: PARACAS | BALLESTAS ISLANDS Depart for a morning of discovery during a relaxing boat ride around the Ballestas Islands, and see the Paracas Candleabra. The remainder of the afternoon and evening are at leisure at the property.
Overnight: La Hacienda Bahía Paracas (B)

Day 9: PARACAS | LIMA | DEPART FOR U.S. After breakfast depart for Lima where a group hospitality room will be provided at the hotel before transferring to the airport for departing flights home this evening. Guests continuing on the post-tour will fly from Lima to Iquitos.
Hospitality Room: Wyndham Costa del Sol (B)
(B = Breakfast, L = Lunch, D = Dinner)





Ballestas Islands

What's Included

- 8 nights premium accommodations
- 8 breakfasts, 5 lunches and 2 dinners including a special welcome dinner
- All small-group excursions as noted in the 9-day itinerary, including entrance fees
- Full guiding services of an Orbridge Travel Director and expert local guides
- Private motor coach transportation
- Luggage portage
- Gratuities to Orbridge Travel Director, local guides and drivers
- Airport transfers for guests arriving and departing during the suggested times



Sacred Valley

Activity Level: Guests should be able to enjoy two hours or more of walking, be sure-footed on cobbled surfaces, and walk up and down stairs without assistance. Historic city centers are usually more accessible by foot than vehicle. Due to the structure of some buildings, facilities for the disabled may be limited.

Your Expedition Leader:

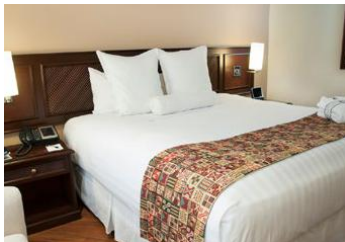
Enriched from the wealth of expertise provided by your Orbridge Expedition Leader, you'll bring home a deeper understanding of the flora, fauna, natural history, cultural narrative and diverse landscapes of Peru.

Orbridge

Accommodations *(subject to change)*

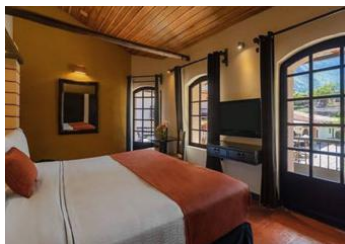
HOTEL ESTELAR MIRAFLORES – LIMA

Hotel Estelar is located in the heart of the upscale and suburban Miraflores District known for its many galleries, as well as cultural and historical venues. Enjoy contemporary and spacious rooms, a rooftop pool with terrace, a large fitness center and panoramic city views from Estelar's restaurant Piso 21.



SONESTA POSADAS DEL INCA – YUCAY

Located in the heart of the Sacred Valley of the Incas, this hotel is a former 18th-century colonial-style monastery surrounded by beautiful gardens. Rooms offer the comfort of modern amenities and the charm of rustic decorative features.



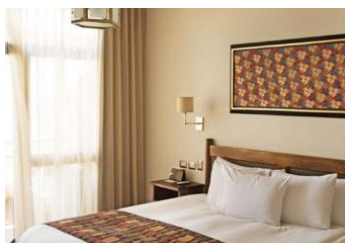
ARANWA CUSCO BOUTIQUE HOTEL

This luxurious property is situated near Cusco's main square, only minutes away from colonial buildings, restaurants and shops. Built in a 16th-century mansion, its décor, sculptures and carvings accentuate the colonial period. Each room is well-appointed and elegantly decorated with traditional furniture and frescoes.



LA HACIENDA BAHÍA PARACAS

This coastal property blends details of the surrounding atmosphere with luxurious accommodations. After an exciting day of exploration, escape to the spacious outdoor swimming pool or the fitness room.



Optional Post-Tour Amazon

Uncover the wonders of the Amazon alongside expert guides who share their profound knowledge of the flora, fauna and indigenous cultures that call this region home.

Day 9: IQUITOS | AMAZON Upon arriving to Francisco Secada Vignetta International Airport a guide will assist with your transfer to the boat that brings you to Ceiba Tops Lodge. Before dinner take time to settle into your accommodations and perhaps explore the property's elaborate gardens or relax in the lounge.

Overnight: Ceiba Tops Lodge (L,D)

Day 10: AMAZON After breakfast join a skilled guide on a birding expedition to spot for the wildly diverse avian species in the area. Embrace the beauty of this vibrant forest as you listen to the melodious symphony of its inhabitants. Later venture into the heart of the rainforest on the Bushmaster Trail, a hiking experience that takes you through various ecosystems. A visit to a Yagua Indian Village highlights the living traditions of indigenous communities. End the day's adventures with a scenic trail walk before returning to the lodge for dinner.

Overnight: Ceiba Tops Lodge (B,L,D)

Day 11: AMAZON Embark upon a scenic boat ride on the Amazon River to reach the Explornapo Lodge amidst the Sucusari Reserve. Take an exhilarating canopy walk through the forest. Afterward, explore the fascinating local flora and their traditional uses during an ethnobotanical garden tour.

Overnight: Ceiba Tops Lodge (B,L,D)

Day 12: AMAZON | IQUITOS | LIMA Set out for a final hike along the river followed by a sugar cane rum factory tour. Return to Iquitos by boat, then transfer to the airport for the return flight to Lima.

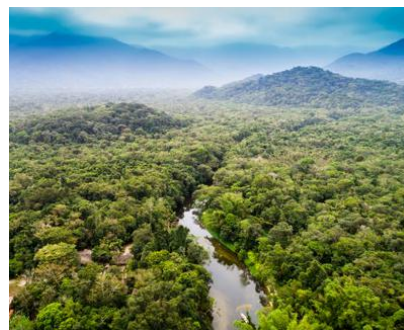
Overnight: Wyndham Costa del Sol Airport (B,L)

Day 13: LIMA | DEPART FOR U.S. After breakfast guests departing during the suggested times take the complimentary transfer to the airport for flights home. (B)

What's Included

- 3 nights at Ceiba Tops Lodge (or similar)
- 1 night at Wyndham Costa del Sol Airport (or similar)
- 4 breakfasts, 4 lunches and 3 dinners
- All guided excursions and activities listed in the 5-day itinerary including entrance fees
- Luggage portage
- Gratuities to local guide, driver and porters
- Airport transfers for guests departing during the suggested times

Daily activities on this post-tour will be determined by weather, opportunities to view wildlife, and other various elements that make up the incredibly diverse landscape. This itinerary is a general listing of activities and excursions that may happen during any part of the tour.



MYSTERIES OF PERU AND MACHU PICCHU

JUNE 4-12, 2025

Amazon Post-Tour: June 12-16, 2025

For the ease of registering online, please visit our website <https://go.wlu.edu/secretsofperu>. You may also complete this reservation form and scan it to lifelong@wlu.edu. Upon submission of your registration form, Orbridge will contact you within two business days to confirm your reservation and collect your credit card deposit. If you would prefer to pay your deposit by check, please make payable to Orbridge, LLC and mail to: Office of Lifelong Learning Washington and Lee University 204 West Washington St. Lexington, VA 24450

GUEST INFORMATION:

Guest #1 Name: Mr. / Mrs. / Ms.

(Preferred Name on Name badge) W&L Affiliation (class year, parent year, friend)

Email:

Mobile Phone: Home Phone:

Address:

City: State: Zip:

Guest #2 Name: Mr. / Mrs. / Ms.

(Preferred Name on Name badge) W&L Affiliation (class year, parent year, friend)

Email:

Mobile Phone: Home Phone:

DEPOSIT PAYMENT: ☐ Check ☐ ACH (Automated Clearing House) ☐ Credit Card

CATEGORY SELECTION & DEPOSIT:

Category (first choice): ☐ Double ☐ Double Deluxe ☐ Single ☐ Single Deluxe

Category (second choice): ☐ Double ☐ Double Deluxe ☐ Single ☐ Single Deluxe

guests joining program (\$850/person) +

guests joining post-tour (\$500/person) = TOTAL DEPOSIT: \$

OPTIONAL EXCURSION (added to your final invoice):

guests joining Nazca Lines Overflight (\$350/person)

Post-Tour Category (choose one): ☐ Double ☐ Double Deluxe ☐ Single ☐ Single Deluxe

I/we have read, understand, and agree to the full Terms & Conditions at terms.orbridge.com; and I/we agree that Orbridge, LLC is authorized to charge my credit card above and/or take my/our deposit for this program.

Signature: Date:

Category	Standard Rate	Special Rate*
Double	\$5,999	\$5,495
Double Deluxe	\$6,399	\$5,895
Single	\$7,499	\$6,995
Single Deluxe	\$7,899	\$7,395
Deluxe package includes room upgrades at Hotel Estelar Miraflores, Sonesta Posada del Inca, and Aranwa Cusco Boutique Hotel and La Hacienda Bahía Paracas. Availability limited.		
Amazon Post-Tour*		
Category	Standard Rate	Special Rate*
Double	\$2,699	\$2,495
Double Deluxe	\$2,999	\$2,795
Single	\$3,899	\$3,695
Single Deluxe	\$4,199	\$3,995
Deluxe package includes room upgrades at Ceiba Tops Lodge Availability limited.		

Rates are per person based on double occupancy except where noted as Single, in U.S. dollars.

*Special group rate; limited offer. For the main program, internal roundtrip airfare between Lima and Cusco is included. Airfare otherwise not included. For the post-tour, roundtrip airfare between Lima and Iquitos is included. Airfare otherwise not included. Single availability limited. **A complement to the educational component of this journey, Expedition Libraries are curated collections of useful resources and background reading tailored to this program. Place your deposit on or before the specified date, and one Expedition Library per household will be sent after receipt of final payment. Libraries may be purchased; please call for details.



Office of Lifelong Learning
Washington and Lee University
204 West Washington St.
Lexington, VA 24450

MYSTERIES OF PERU AND MACHU PICCHU

JUNE 4-12, 2025

Washington and Lee Rate:

Save more than **\$1,000** per couple

30-DAY REFUND GUARANTEE

FREE EXPEDITION LIBRARY
AN EXCLUSIVE EARLY
RESERVATION BONUS

Reserve by

November 22, 2024**

PSRST STD
U.S. POSTAGE
PAID
PERMIT NO. 825
SAN DIEGO, CA