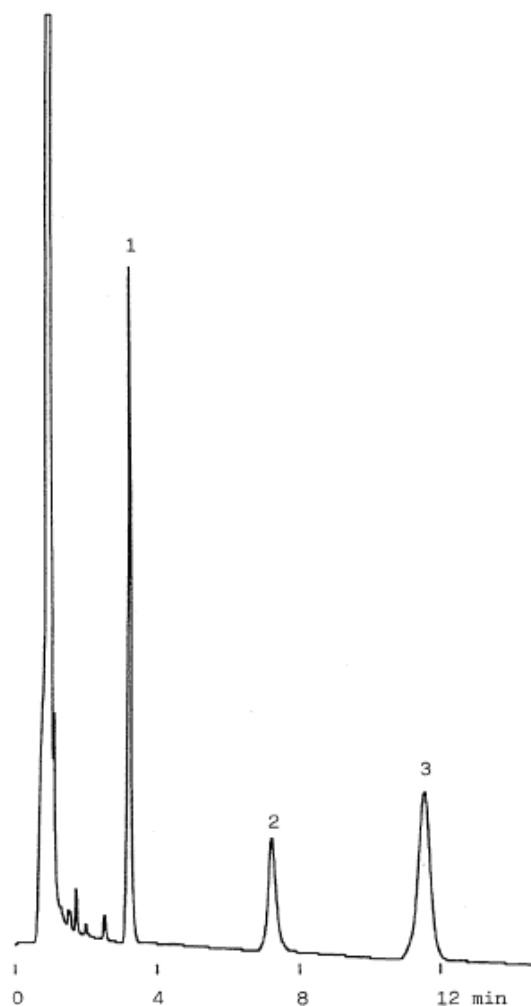


Components of Cold-drugs in Plasma

Data No. LA225-0000



Column : Biopac AV-1
5 μ m
150 \times 4.6mm I.D.

Solutes : 1. Acetoaminophen Ca.0.3 μ g
2. Caffeine Ca.0.08 μ g
3. Ethenzamide Ca.0.4 μ g

Column Cat. No. : 5020-02511

Eluent : CH₃CN/0.1% H₃PO₄=10/90

Flow rate : 1.0 mL/min.

Col. Temp. : 33°C

Detection : UV 220 nm

Injection Vol. :

Sample : 7. 5mg cold-drugs 2mL H₂O
in Coagulation Control Plasma 1mL