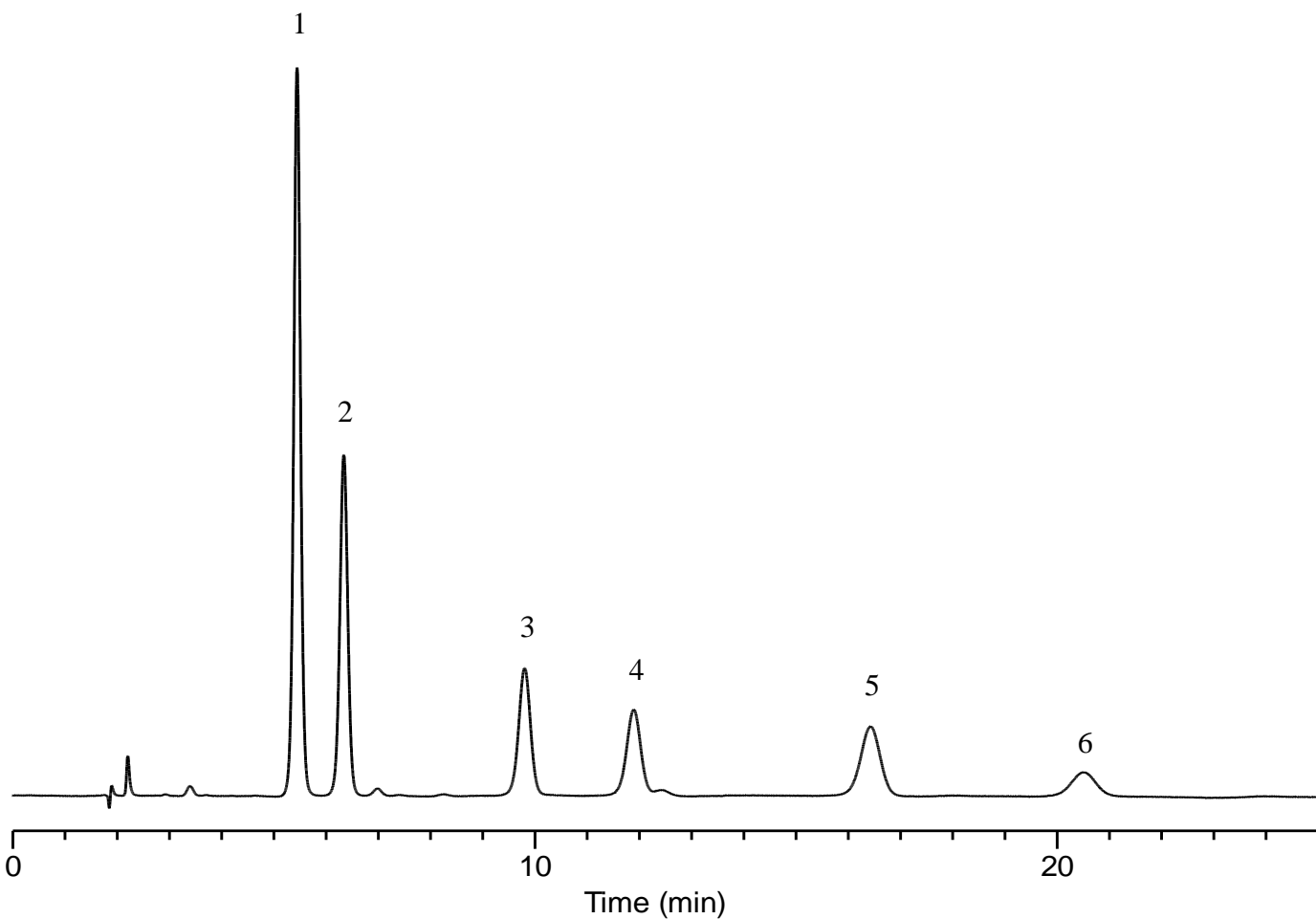


InertSearch™ for LC

Inertsil™ Applications

Analysis of Chlorophenols

Data No. LB609-0806



Conditions

Column : InertSustain Cyano (5 μ m, 150 x 4.6 mm I.D.)

Column Cat. No. : 5020-89276

Eluent : A) CH₃OH
B) 0.1% H₃PO₄ in H₂O
A/B = 40/60, v/v

Flow rate : 1.0 mL/min

Col. Temp. : 40 °C

Detection : UV 280 nm

Injection Vol. : 2 μ L

Sample : Standard

Analyte:

1. 2,6-Dichlorophenol	100 mg/L
2. 2,4-Dichlorophenol	100 mg/L
3. 2,4,5-Trichlorophenol	100 mg/L
4. 3,4,5-Trichlorophenol	100 mg/L
5. 2,3,4,5-Tetrachlorophenol	100 mg/L
6. Pentachlorophenol	100 mg/L