

High- COMPONENTS

SIRE DIRECTORY // APRIL 2025



YOUR SUCCESS *Our Passion.*

APRIL 2025 UPDATES

There were many changes that accompanied the April sire summaries and the base change was the talk of the town. While the base change does not re-rank sires, it does make it difficult to target appropriate selection benchmarks. For Jerseys, the base change for PTA Milk was -300 pounds while fertility traits, which have been historically difficult to improve, had a base change of +0.5 DPR, +0.1 CCR and -1.1 HCR. But the base change was just one of many updates that occurred with this sire summary run, including updates to Expected Future Inbreeding (EFI) and adjustments to Standard Deviations, both of which affected PTA values. For a complete guide to understanding the base change and how it influences your herd, scan the QR code.



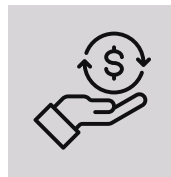
DRIVE GENETIC PROGRESS WITH ECONOMICALLY IMPORTANT TRAITS



DELIVERING JPI™ LEADERS

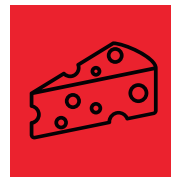
HOME TO THE BREED'S
TOP 6
PROVEN JPI SIRES

44
YOUNG SIRES ABOVE
+ **120 JPI**



HEALTHY PROFITS

Research shows that cows reach their greatest potential in the third and fourth lactation. The leading reasons for involuntary culls are mastitis, fertility and general cow health. Are you choosing an index that leverages health and wellness traits? HHP\$® creates healthy cows that deliver healthy profits.



BOOSTING TOTAL SOLIDS

42
SIRES ABOVE
+ **50 CFP**



IMPROVING DAUGHTER FERTILITY

LINEUP AVERAGES
+ **0.3 DPR**
+ **0.8 CCR**
+ **1.1 HCR**

13 SIRES ABOVE
+ **1.0**
FOR DPR, CCR AND HCR

POLLED POWER

With more than 20 Polled sires available in the Jersey lineup, Select Sires offers breeders a variety of balanced sires that excel for health and wellness, fertility and components. Leverage the advantages of Polled cattle without sacrificing genetic merit for the traits you prioritize. Check out Polled Jersey sires on pages 8-9, 11 and 20-25.

POLLED JERSEY LINEUP AVERAGES

+**132 JPI™** +**382 HHP\$®** +**46 CFP**
+**29 CW\$™** +**0.3 CCR** +**1.1 HCR**

NEW JERSEY GRADUATES

Check out these exciting newly proven sires that have graduated to the daughter-proven lineup:

- ◆ 7JE2022 OVERALLS: Page 6
- ◆ 7JE2027 JX CORBIN {5}: Page 6
- ◆ 7JE2033 CHARLTON: Page 5
- ◆ 7JE5078 MIDWAY: Page 5
- ◆ 250JE1947 JX CORSAIR {5}: Page 5

SELECT SIRES DESIGNATIONS



FEEDPRO™

FeedPRO optimizes selection for increased production and moderate body size while maintaining body condition score and daughter fertility. This revolutionary index designates sires with the genetics to improve income over feed costs and maintains health and reproductive traits.



Throughout this directory, you will find sires sporting the special designation icons listed here along with their descriptions. Use these tools to choose sires that best reflect your management style to meet your goals.



FERTILITYPRO™

The FertilityPRO designation identifies sires with semen that will likely improve pregnancy rates. This designation is assigned by examining industry service Sire Conception Rate (SCR) values, along with intensive in-house semen quality evaluations.



gender SELECTED™ Ultraplus™



This icon identifies sires with sex-sorted semen available. More heifers is not out of reach with our research-backed *gender* SELECTED sires. All *gender* SELECTED semen is processed using Ultraplus technology.



SHOWCASE™

Sires earn the SHOWCASE designation through outstanding breed-leading Type or show-winning pedigrees. Turn to this designation to produce your next show winner or improve the overall type in your herd.



gender SELECTED 4M™ Ultraplus™



Look for the *gender* SELECTED 4M icon to identify sires with sex-sorted semen available in 4 million sperm doses. All *gender* SELECTED semen is processed using Ultraplus technology.



GRAZINGPRO™

GrazingPRO sires improve the profitability of grass-based production systems by transmitting greater longevity, improved mobility, moderate stature, greater component yields and superior production - all while not compromising Daughter Pregnancy Rate (DPR) and Somatic Cell Score (SCS).



ELITESEXED FERTILITY™



The Elite Sexed Fertility icon designates sires that can help you achieve the highest sex-sorted semen conception rates, enhancing your return on investment! This innovative designation distinguishes our highest performing sires for sex-sorted semen in both 2M and 4M products.



ROBOTPRO™

RobotPRO sires transmit desired traits for robotic milking systems. These sires were selected based on component and milk yield, milk quality, udder health, functional udder traits like udder floor, and milking temperament. Use these sires to create the next generation of profitable cows for your automated milking system.



MASTITISRESISTANTPRO™



Sires which excel in multiple indicators of mastitis resistance are more likely to deliver genetic improvement. Mastitis ResistantPRO uses a combination of CDCB Mastitis Resistance, CDCB Somatic Cell Score (SCS) and Zoetis Mastitis Resistance.

*FeedPRO, FertilityPRO, GrazingPRO, Mastitis ResistantPRO and RobotPRO are registered trademarks of Select Sires Inc. *Showcase, Elite Sexed Fertility, *gender* SELECTED and *gender* SELECTED 4M are trademarks of Select Sires Inc., and Ultraplus is a trademark of STGen LLC.

FOR JERSEY SIRES WITHOUT SEXED SEMEN IDENTIFICATION, PLEASE CONTACT YOUR SELECT SIRES REPRESENTATIVE FOR POTENTIAL OPPORTUNITIES TO SPECIAL ORDER *gender* SELECTED PRODUCT.

JX CRISPIN {5}

14JE1921 JX PRIMUS THRASHER CRISPIN {5}-ET
 8403213193850 BBR 100 JH1F JNS-TF
 DMS: 561,135 aAa: 231 B-Casein: A2A2 K-Casein: BB
 JX Thrasher {6} x JX Fournette {3} x Lemonhead



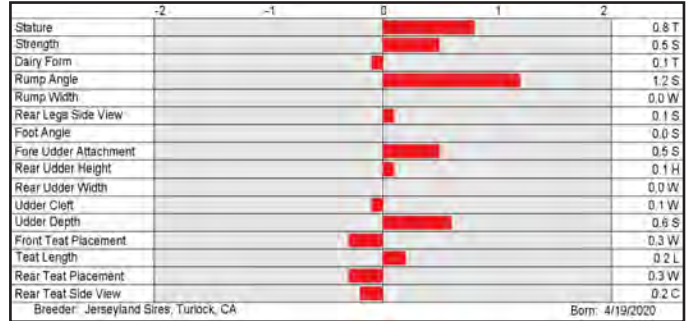
JX PRIMUS FOURNETTE CERYS 560 {4}-ET (VG-84%)
 Dam of JX CRISPIN {5}



CDCB-S Genomic Evaluation		(04/25)	129 Dtrs/16 Herds	RIP 26%
Milk	+433	94%R	Net Merit (90%R)	+\$477
Protein	+0.06%	+28	Cheese Merit	+\$498
Fat	+0.04%	+30	CFP	+58

CDCB-S/AJCA Genomic Evaluation		(04/25)	32 Dtrs/7 Herds
Type +0.1	88%R		+16.1JUI
			GJPI +179

Health and Fertility		(04/25)	CDCB/Zoetis Data	
SCS	2.99	90%R	PL +5.4	85%R
DPR	+3.4	83%R	LIV +2.6	76%R
DWP\$	+\$582		HCR +3.0	72%R
M FVR	101	62%R	CCR +3.7	83%R
HHP\$	+\$628		WT\$ -\$14	
			CW\$ +\$67	
			MAS -1.3	70%R
			ZMAS 98	53%R
			SCR +1.8	61%R



JX THRASHER {6}

7JE1758 JX CDF JLS PILGRIM THRASHER {6}-ET
 8403006436075 BBR 100 JH1F JNS-TF
 DMS: 234,246 aAa: 315 B-Casein: A2A2 K-Casein: BB
 Pilgrim x Viceroy x Soleil



JX VICTORY 55435 THRASHER 60692 {5} (VG-84%)
 Victory Farms LLC, Revillo, SD



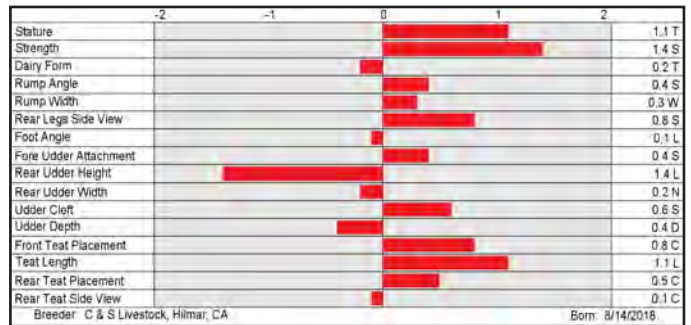
DUPAT THRASHER 23759-ET (VG-88%)
 Wickstrom Jersey Farms Inc., Hilmar, CA



CDCB-S Genomic Evaluation		(04/25)	6,569 Dtrs/138 Herds	RIP 10%
Milk	+1,211	99%R	Net Merit (99%R)	+\$473
Protein	-0.01%	+43	Cheese Merit	+\$483
Fat	-0.09%	+42	CFP	+85

CDCB-S/AJCA Genomic Evaluation		(04/25)	2,838 Dtrs/91 Herds
Type +0.0	99%R		+8.8JUI
			GJPI +175

Health and Fertility		(04/25)	CDCB/Zoetis Data	
SCS	2.95	99%R	PL +4.4	99%R
DPR	+1.6	99%R	LIV +1.3	93%R
DWP\$	+\$581		HCR +2.7	98%R
M FVR	105	95%R	CCR +1.5	99%R
HHP\$	+\$598		WT\$ +\$30	
			CW\$ -\$16	
			MAS -2.3	98%R
			ZMAS 101	95%R
			SCR +0.7	88%R



JX CHATHAM {4}

7JE1789 JX PRIMUS ENZO CHATHAM {4}-ET
 8403200210433 BBR 100 JH1F JNS-TF
 DMS: 234,345 aAa: 534 B-Casein: A2A2 K-Casein: BB
 JX Enzo {3} x Lemonhead x Pharoah



JX CLOVER FARMS CHATHAM CHERYL 9203 {5} (VG-84%)
 Clover Farms, Olney, IL



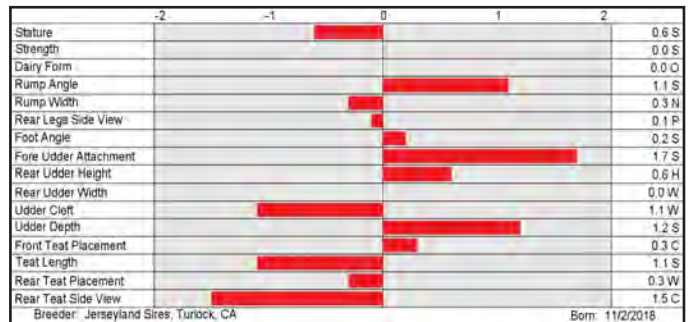
JX CLOVER FARMS CHATHAM RISK 9258 {5} (VG-81%)
 Clover Farms, Olney, IL



CDCB-S Genomic Evaluation		(04/25)	693 Dtrs/40 Herds	RIP 18%
Milk	+1,429	99%R	Net Merit (96%R)	+\$536
Protein	-0.13%	+26	Cheese Merit	+\$515
Fat	-0.13%	+45	CFP	+71

CDCB-S/AJCA Genomic Evaluation		(04/25)	219 Dtrs/23 Herds
Type +0.5	96%R		+18.7JUI
			GJPI +171

Health and Fertility		(04/25)	CDCB/Zoetis Data	
SCS	2.89	97%R	PL +4.4	92%R
DPR	+0.2	92%R	LIV +0.8	75%R
DWP\$	+\$499		HCR +0.9	85%R
M FVR	103	66%R	CCR +1.2	91%R
HHP\$	+\$532		WT\$ -\$19	
			CW\$ -\$4	
			MAS -0.6	85%R
			ZMAS 102	67%R
			SCR +0.7	82%R



CHARLTON

7JE2033 PRIMUS GISLEV CHARLTON-ET

8403213193880 BBR 100 JH1F JNS-TF

B-Casein: A2A2 K-Casein: BB

Vj Gislev x Viceroy x Lemonhead



NEW RELEASE!



CDCB-S Genomic Evaluation		(04/25)	62 Dtrs/12 Herds	RIP 92%
Milk	+768	90%R	Net Merit (84%R)	+\$430
Protein	+0.04%	+37	Cheese Merit	+\$451
Fat	-0.01%	+37	CFP	+74

CDCB-S/AJCA Genomic Evaluation		(04/25)	0 Dtrs/0 Herds
Type -0.5	81%R		+11.3JUI
			GJPI +171

Health and Fertility		(04/25)	CDCB/Zoetis Data	
SCS	2.92	87%R	PL +2.6	77%R
DPR	+1.8	73%R	HCR +2.6	67%R
DWP\$	+\$621		WT\$ +\$27	
M FVR	98	43%R	MAS -1.2	61%R
HHP\$	+\$591		ZMAS 103	45%R
			LIV +0.8	66%R
			CCR +3.7	72%R
			CW\$ +\$71	



GOFF PHAROAH CIRCUS ACT-ET (E-90%)
Third dam of CHARLTON

	-2	-1	0	1	2	
Stature						0.2 S
Strength						0.5 S
Dairy Form						0.8 T
Rump Angle						0.6 S
Rump Width						0.2 W
Rear Legs Side View						0.3 P
Foot Angle						0.1 S
Fore Udder Attachment						0.0 S
Rear Udder Height						0.4 L
Rear Udder Width						1.6 N
Udder Cleft						0.4 W
Udder Depth						0.5 S
Front Teat Placement						0.5 W
Teat Length						0.1 S
Rear Teat Placement						0.6 W
Rear Teat Side View						1.2 C

Breeder: Jerseyland Sires, Turlock, CA Born: 11/9/2020

JX CORSAIR {5}

250JE1947 JX PRIMUS ROWAN CORSAIR {5}-ET

8403213193868 BBR 100 JH1F JNS-TF

DMS: 246,456 aAa: 435 B-Casein: A2A2 K-Casein: BB

Rowan x JX Enzo {3} x Lemonhead



NEW RELEASE!



CDCB-S Genomic Evaluation		(04/25)	1,004 Dtrs/59 Herds	RIP 93%
Milk	+311	99%R	Net Merit (94%R)	+\$208
Protein	-0.01%	+9	Cheese Merit	+\$209
Fat	+0.05%	+26	CFP	+35

CDCB-S/AJCA Genomic Evaluation		(04/25)	146 Dtrs/18 Herds
Type +1.1	94%R		+19.5JUI
			GJPI +103

Health and Fertility		(04/25)	CDCB/Zoetis Data	
SCS	2.94	97%R	PL +1.6	87%R
DPR	-0.4	88%R	HCR +1.0	94%R
DWP\$	+\$220		WT\$ -\$11	
M FVR	93	70%R	MAS -1.6	69%R
HHP\$	+\$224		ZMAS 100	57%R
			LIV -0.2	79%R
			CCR +0.2	87%R
			CW\$ -\$27	
			SCR +2.4	82%R



JX AVI-LANCHE CORSAIR LNCE 37055 (G) (VG-82%)
Richard & Jennifer M. Avila, Dalhart, TX



JX VICTORY 56467 CORSAIR 64064 (G)-ET
Victory Farms LLC, Revillo, SD

	-2	-1	0	1	2	
Stature						0.6 T
Strength						0.2 S
Dairy Form						0.1 Q
Rump Angle						0.4 H
Rump Width						0.1 W
Rear Legs Side View						1.1 P
Foot Angle						1.0 S
Fore Udder Attachment						2.3 S
Rear Udder Height						1.2 H
Rear Udder Width						0.3 N
Udder Cleft						0.5 S
Udder Depth						2.7 S
Front Teat Placement						0.5 C
Teat Length						0.2 L
Rear Teat Placement						0.5 C
Rear Teat Side View						0.8 C

Breeder: Jerseyland Sires, Turlock, CA Born: 8/6/2020

MIDWAY

7JE5078 RIVER VALLEY THRASHER MIDWAY-ET

USA67801435 BBR 100 JH1F JNS-TF

DMS: 234,345 aAa: 432 B-Casein: A1A2 K-Casein: BB

JX Thrasher {6} x Listowel-P x Mackenzie



NEW RELEASE!



CDCB-S Genomic Evaluation		(04/25)	83 Dtrs/3 Herds	RIP 99%
Milk	+656	93%R	Net Merit (88%R)	+\$465
Protein	+0.03%	+31	Cheese Merit	+\$486
Fat	+0.04%	+40	CFP	+71

CDCB-S/AJCA Genomic Evaluation		(04/25)	6 Dtrs/2 Herds
Type +0.1	83%R		+13.5JUI
			GJPI +168

Health and Fertility		(04/25)	CDCB/Zoetis Data	
SCS	2.78	88%R	PL +4.3	81%R
DPR	+0.6	78%R	HCR +1.9	84%R
DWP\$	+\$592		WT\$ +\$50	
M FVR	103	53%R	MAS -0.4	66%R
HHP\$	+\$552		ZMAS 105	55%R
			LIV -0.1	72%R
			CCR +1.2	78%R
			CW\$ +\$31	
			SCR -0.5	75%R



RIVER VALLEY LSTWL MACNCHEZ 5055-ET (E-91%)
Dam of MIDWAY

	-2	-1	0	1	2	
Stature						0.1 S
Strength						0.4 S
Dairy Form						0.2 Q
Rump Angle						0.3 S
Rump Width						0.1 W
Rear Legs Side View						0.6 S
Foot Angle						0.0 S
Fore Udder Attachment						0.5 S
Rear Udder Height						0.2 L
Rear Udder Width						0.3 W
Udder Cleft						0.0 S
Udder Depth						0.4 D
Front Teat Placement						0.1 C
Teat Length						0.1 S
Rear Teat Placement						0.2 W
Rear Teat Side View						0.3 C

Breeder: River Valley Farm, Tremont, IL Born: 8/1/2020

JX CORBIN {5}

7JE2027 JX PRIMUS GISLEV CORBIN {5}-ET
 8403203110507 BBR 100 JH1F JNS-TF
 B-Casein: A2A2 K-Casein: BB
 Vj Gislev x JX Enzo {3} x Lemonhead



NEW RELEASE!

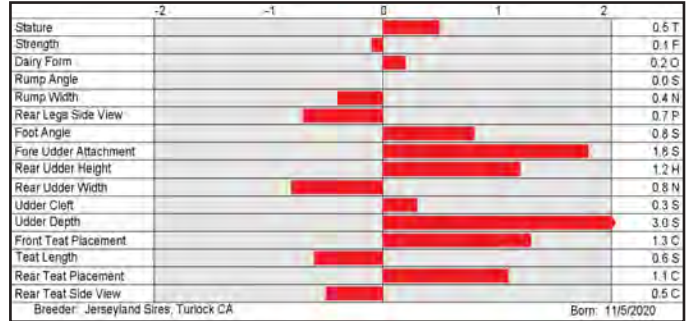


JX S-S-I VICTORY CORBIN 64576(6)-ET

CDCB-S Genomic Evaluation		(04/25)	56 Dtrs/11 Herds	RIP 95%
Milk	+467	90%R	Net Merit (85%R)	+\$366
Protein	+0.00%	+17	Cheese Merit	+\$373
Fat	+0.04%	+32	CFP	+49

CDCB-S/AJCA Genomic Evaluation		(04/25)	16 Dtrs/5 Herds
Type +0.8	85%R		+17.2JUI
			GJPI +147

Health and Fertility		(04/25)	CDCB/Zoetis Data	
SCS	2.87	86%R	PL +3.0	78%R
DPR	+0.8	72%R	LIV -0.2	66%R
DWP\$	+\$285		HCR +0.5	69%R
M FVR	92	44%R	CCR +2.0	72%R
HHP\$	+\$474		WT\$ -\$22	CW\$ -\$71
			MAS -0.5	59%R
			ZMAS	99 44%R



OVERALLS

7JE2022 ROWLEYS 80 CALIBAN OVERALLS-ET
 8403230110523 BBR 100 JH1F JNS-TF
 DMS: 234,246 aAa: 342 B-Casein: A2A2 K-Casein: BB
 Caliban x Chrome x Valson



NEW RELEASE!

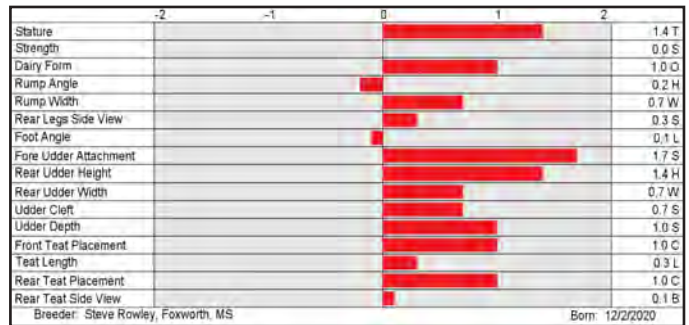


DUTCH HOLLOW OVERALLS HEART (VG-80%)
 Melanie F Chittenden, Schodack Landing, NY

CDCB-S Genomic Evaluation		(04/25)	133 Dtrs/28 Herds	RIP 98%
Milk	+246	94%R	Net Merit (89%R)	+\$265
Protein	+0.02%	+13	Cheese Merit	+\$276
Fat	+0.10%	+32	CFP	+45

CDCB-S/AJCA Genomic Evaluation		(04/25)	29 Dtrs/14 Herds
Type +1.0	87%R		+20.7JUI
			GJPI +137

Health and Fertility		(04/25)	CDCB/Zoetis Data	
SCS	2.83	89%R	PL +2.2	82%R
DPR	+1.1	76%R	LIV -1.3	74%R
DWP\$	+\$469		HCR +4.5	86%R
M FVR	93	56%R	CCR +2.1	78%R
HHP\$	+\$325		WT\$ +\$64	CW\$ +\$58
			MAS -1.7	65%R
			ZMAS	104 52%R
			SCR +0.7	95%R



JX ELS {6}

7JE1933 JX VICTORY THRASHER ELS {6}-ET
 8403213511496 BBR 100 JH1F JNS-TF
 DMS: 234,246 aAa: 153 B-Casein: A2A2 K-Casein: BB
 JX Thrasher {6} x JX Pogba {4} x Mackenzie



CLOVER FARMS ELS BECK 10430
 Walter C. Graves, Dundas, IL

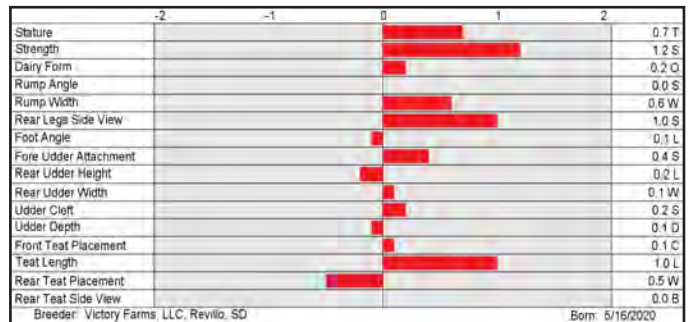


CLOVER FARMS ELS GERTIE 10448 (VG-87%)
 Clover Farms, Olney, IL

CDCB-S Genomic Evaluation		(04/25)	28 Dtrs/9 Herds	RIP 43%
Milk	+797	88%R	Net Merit (83%R)	+\$381
Protein	+0.05%	+41	Cheese Merit	+\$406
Fat	+0.02%	+44	CFP	+85

CDCB-S/AJCA Genomic Evaluation		(04/25)	22 Dtrs/7 Herds
Type +0.3	85%R		+13.1JUI
			GJPI +157

Health and Fertility		(04/25)	CDCB/Zoetis Data	
SCS	2.97	84%R	PL +2.4	78%R
DPR	+0.6	76%R	LIV -0.3	71%R
DWP\$	+\$464		HCR +2.8	69%R
M FVR	101	52%R	CCR +0.6	76%R
HHP\$	+\$505		WT\$ -\$14	CW\$ -\$36
			MAS -1.7	64%R
			ZMAS	98 54%R
			SCR -1.9	58%R



14JE2002 VALSIGNA THRASHER VOLANT-ET 8403126987953

BBR: 100 JH1C JNS-TF DMS: 234,345 aAa: 435 B-Casein: A2A2 K-Casein: BB

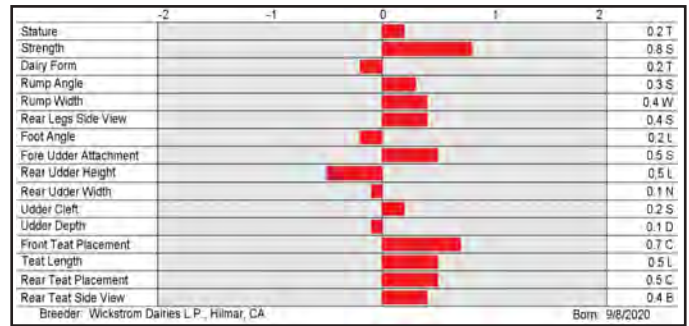
CDCB-S Genomic Evaluation		(04/25)	267 Dtrs/19 Herds	RIP 94%
Milk	+828	96%R	Net Merit (92%R)	+\$387
Protein	-0.01%	+30	Cheese Merit	+\$395
Fat	-0.05%	+32	CFP	+62

CDCB-S/AJCA Genomic Evaluation		(04/25)	20 Dtrs/5 Herds
Type	+0.4	86%R	+12.0JUI
			GJPI +151

Health and Fertility		(04/25)	CDCB/Zoetis Data	
SCS	2.95	92%R	PL +3.6	86%R
DPR	+1.3	82%R	HCR +0.7	86%R
DWP\$	+\$624		WT\$ +\$68	
M FVR	99	52%R	MAS -1.1	66%R
HHP\$	+\$504		SCR +0.7	85%R
			LIV +1.5	77%R
			CCR +1.7	82%R
			CW\$ +\$122	
			ZMAS 104	53%R



JX Thrasher (6) x Steve x Perform



7JE1726 PRIMUS CRAZE STARLORD-ET 8403141725644

BBR: 100 JH1F JNS-TF DMS: 345,456 aAa: 624 B-Casein: A2A2 K-Casein: BB

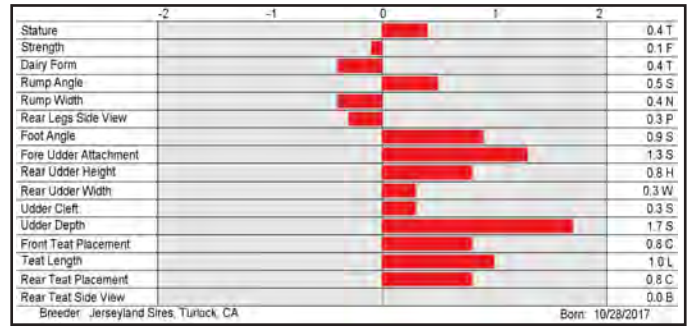
CDCB-S Genomic Evaluation		(04/25)	3,120 Dtrs/200 Herds	RIP 6%
Milk	-13	99%R	Net Merit (98%R)	+\$365
Protein	-0.02%	-4	Cheese Merit	+\$362
Fat	+0.11%	+20	CFP	+16

CDCB-S/AJCA Genomic Evaluation		(04/25)	906 Dtrs/98 Herds
Type	+0.6	99%R	+20.0JUI
			GJPI +142

Health and Fertility		(04/25)	CDCB/Zoetis Data	
SCS	2.92	99%R	PL +5.3	98%R
DPR	+1.9	97%R	HCR +1.0	93%R
DWP\$	+\$369		WT\$ +\$87	
M FVR	100	84%R	MAS +3.2	93%R
HHP\$	+\$492		SCR -1.7	90%R
			LIV +4.1	89%R
			CCR +2.2	97%R
			CW\$ -\$12	
			ZMAS 109	85%R



Craze x JX Pfler (5) x Determinate



7JE1980 BLACK LABEL THRASHING KAMAKAZI-ET 8403219480313

BBR: 100 JH1F JNS-TF DMS: 234,345 aAa: 651 B-Casein: A2A2 K-Casein: BB

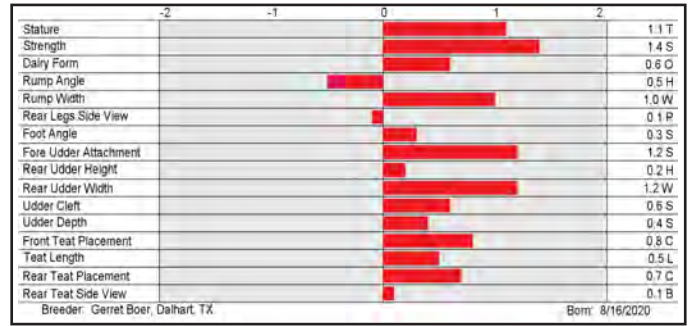
CDCB-S Genomic Evaluation		(04/25)	436 Dtrs/55 Herds	RIP 95%
Milk	+808	97%R	Net Merit (93%R)	+\$203
Protein	-0.07%	+16	Cheese Merit	+\$197
Fat	-0.12%	+16	CFP	+32

CDCB-S/AJCA Genomic Evaluation		(04/25)	61 Dtrs/26 Herds
Type	+1.0	90%R	+17.3JUI
			GJPI +122

Health and Fertility		(04/25)	CDCB/Zoetis Data	
SCS	2.73	94%RPL	+3.1	87%R
DPR	+0.0	85%R	HCR +1.1	89%R
DWP\$	+\$257		WT\$ -\$24	
M FVR	106	54%R	MAS +0.1	68%R
HHP\$	+\$360		SCR +1.6	93%R
			LIV +1.1	78%R
			CCR -0.1	85%R
			CW\$ +\$22	
			ZMAS 98	55%R



JX Thrasher (6) x Valentino x Kokomoo



7JE1880 BLACK LABEL SHOCKER STEARNS 8403210208438

BBR: 100 JH1F JNS-TF B-Casein: A2A2 K-Casein: BB

CDCB-S Genomic Evaluation		(04/25)	161 Dtrs/16 Herds	RIP 24%
Milk	+408	96%R	Net Merit (90%R)	+\$130
Protein	-0.02%	+11	Cheese Merit	+\$130
Fat	-0.07%	+6	CFP	+17

CDCB-S/AJCA Genomic Evaluation		(04/25)	37 Dtrs/9 Herds
Type	+0.5	89%R	+14.4JUI
			GJPI +96

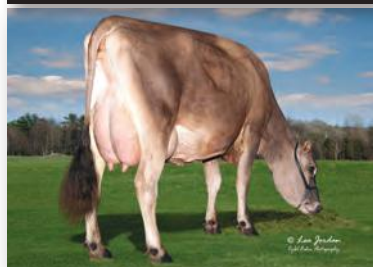
Health and Fertility		(04/25)	CDCB/Zoetis Data	
SCS	2.94	91%RPL	+1.9	83%R
DPR	+0.2	82%R	HCR +1.0	73%R
DWP\$	+\$185		WT\$ +\$38	
M FVR	92	53%R	MAS +1.6	71%R
HHP\$	+\$290			
			LIV +0.3	68%R
			CCR +0.9	82%R
			CW\$ +\$28	
			ZMAS 104	54%R



Shocker x Lemonhead x Blade



14JE2002 VOLANT



DUTCH HOLLOW VOLANT KITE (VG-80%)
Lydia Chittenden, Schodack Landing, NY

7JE1726 STARLORD



YOSEMITE STARLORD VICEROI 40774 (VG-85%)
River Rock Ranch- Hilmar, Merced, CA

7JE1980 KAMAKAZI



DGM KAMAKAZI CAROL (VG-84%)
Quade Kirk & Emily Chittenden, Schodack Landing, NY

7JE1880 STEARNS



BAR MB STEARNS 23918-GRADE
Boer Jerseys, Dalhart, TX

SHOWCASE SIREs

VICTORIOUS

7JE5032 RIVER VALLEY VICTORIOUS-ET
 8403126479524 BBR 100 JH1F JNS-TF
 DMS: 234 aAa: 231 B-Casein: A2A2 K-Casein: BB
 Barnabas x latola x Duaiseoir



OEH-MY VICTORUS PARADE (E-91%), intermediate champion and first place senior three-year-old, International Jersey Show, 2023, Vierra Dairy Farms, Hillmar, CA

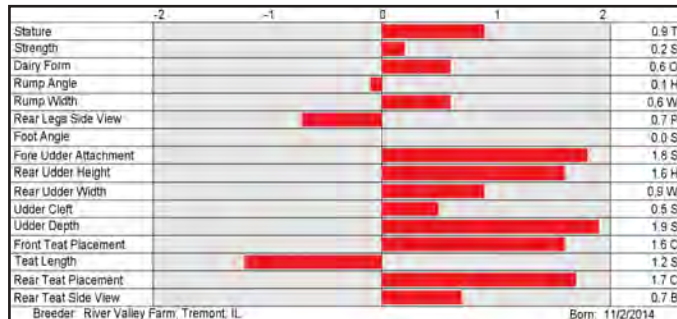
KCJF/LUCKY LADY DREAM-TAKER-ET, reserve All American milking yearling, All American Jersey Show, 2024, full sister to DREAM-MAKER, Jackson and Embry Powers, Salvisa, KY



CDCB-S Genomic Evaluation		(04/25)	4,284 Dtrs/995 Herds		RIP 15%
Milk	-920	99%R	Net Merit (98%R)		-\$265
Protein	+0.10%	-17	Cheese Merit		-\$251
Fat	+0.15%	-19	CFP		-36

CDCB-S/AJCA Genomic Evaluation		(04/25)	2,563 Dtrs/695 Herds	
Type +1.2	99%R		+22.1JUI	GJPI +1

Health and Fertility		(04/25)	CDCB/Zoetis Data			
SCS	3.04	99%R	PL -0.8	98%R	LIV -2.2	90%R
DPR	-1.9	97%R	HCR +0.0	93%R	CCR -2.8	97%R
DWP\$	-\$176		WT\$ +\$61		CW\$ -\$8	
M FVR	98	72%R	MAS +1.2	92%R	ZMAS 103	69%R
HHP\$	-\$219		SCR +0.5	93%R		



DREAM-MAKER

7JE2230 KCJF/LUCKY LADY DREAM-MAKER-ET
 8403242815427 BBR 100 JH1F JNS-TF
 DMS: 246,234 aAa: 312 B-Casein: A2A2 K-Casein: BB

CDCB-S Genomic Evaluation		(04/25)
Milk	-1,332	78%R
Protein	+0.07%	-38
Fat	+0.13%	-43
Net Merit (76%R)		-\$418
Cheese Merit		-\$417
CFP		-81

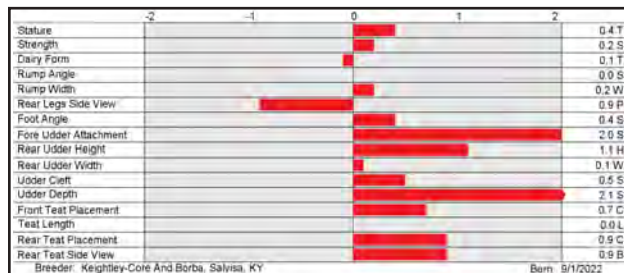
CDCB-S/AJCA Genomic Evaluation		(04/25)
Type +0.8	80%R	+21.0JUI
		GJPI -27

Health and Fertility		(04/25)	CDCB/Zoetis Data			
SCS	3.07	77%R	PL -0.8	75%R	LIV -0.6	66%R
DPR	+0.1	73%R	HCR -1.0	64%R	CCR -0.7	73%R
DWP\$	-\$427		WT\$ +\$7		CW\$ +\$17	
M FVR	99	36%R	MAS +2.1	63%R	ZMAS 99	38%R
HHP\$	-\$337		SCR -0.9	47%R		



S: River Valley VICTORIOUS-ET
 D: Hirds Colton Dream (E-97%)
 MGS: Chillli Action COLTON-ET
 MGD: Hird's Governor Drem 12W (VG-83%)
 MGGS: Griffens GOVERNOR-ET

HIRDS COLTON DREAM (E-97%), grand champion and first place lifetime cheese production winner, All American Jersey Show, 2021



DUTTON-P

250JE2379 PACIFIC EDGE DIVAS DUTTON-P-ET
 8403280017018 BBR 100 JH1F JNS-TF
 aAa: 165 B-Casein: A2A2 K-Casein: BB

CDCB-S Genomic Evaluation		(04/25)
Milk	-888	75%R
Protein	+0.09%	-16
Fat	+0.14%	-18
Net Merit (73%R)		+\$73
Cheese Merit		+\$93
CFP		-34

CDCB-S/AJCA Genomic Evaluation		(04/25)
Type +0.7	78%R	+20.4JUI
		GJPI +94

Health and Fertility		(04/25)	CDCB/Zoetis Data			
SCS	2.75	74%R	PL +3.4	72%R	LIV +2.2	62%R
DPR	+3.5	69%R	HCR +1.4	60%R	CCR +3.9	69%R
DWP\$	+\$125		WT\$ +\$95		CW\$ +\$38	
M FVR	98	32%R	MAS +0.5	58%R	ZMAS 106	36%R
HHP\$	+\$201					



S: Tog Lamoure 39878-PP-ET
 D: Pacific Edge Premier Diva-ET (E-94%)
 MGS: Hawarden Impuls Premier
 MGD: Ratliff Colton Darien-ET (E-93%)
 MGGS: Chillli Action COLTON-ET

PACIFIC EDGE PREMIER DIVA-ET (E-94%), reserve senior champion and first place senior three-year-old, All American Jersey Show, 2022



SHOWCASE SIREs

7JE2375 KASH-IN CRAZEFULLS KRONOS-PP-ET 840327644415

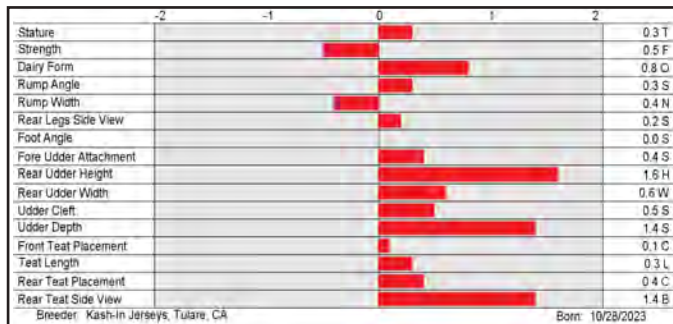
Lamoure-PP x Craze x Lovabull-P

BBR: 100 JH1F JNS-TF DMS: 246,126 aAa: 534 B-Casein: A2A2 K-Casein: BB

CDCB-S Genomic Evaluation		(04/25)		
Milk	+421	76%R	Net Merit (74%R)	+\$222
Protein	-0.03%	+10	Cheese Merit	+\$221
Fat	-0.08%	+5	CFP	+15

CDCB-S/AJCA Genomic Evaluation		(04/25)		
Type	+0.7	79%R	+19.9JUI	GJPI +108

Health and Fertility		(04/25)	CDCB/Zoetis Data	
SCS	2.89	75%R	PL +2.4	73%R
DPR	+0.8	70%R	HCR -1.2	62%R
DWP\$	+\$152		WT\$ +\$36	
M FVR	92	39%R	MAS +1.1	60%R
HHP\$	+\$287		ZMAS 104	43%R



250JE2220 ELM-J S BRECKEN-ET 8403248055957

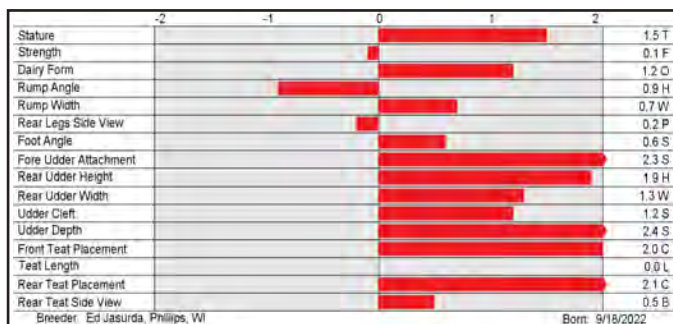
Solstice x Bionic x Chekelo

BBR: 100 JH1F JNS-TF aAa: 135 B-Casein: A1A2 K-Casein: BB

CDCB-S Genomic Evaluation		(04/25)		
Milk	+26	78%R	Net Merit (75%R)	+\$45
Protein	-0.02%	-3	Cheese Merit	+\$45
Fat	-0.01%	+0	CFP	-3

CDCB-S/AJCA Genomic Evaluation		(04/25)		
Type	+1.7	81%R	+22.2JUI	GJPI +91

Health and Fertility		(04/25)	CDCB/Zoetis Data	
SCS	2.78	77%R	PL +2.1	74%R
DPR	+0.3	72%R	HCR +0.0	63%R
DWP\$	+\$138		WT\$ +\$169	
M FVR	98	40%R	MAS +0.6	61%R
HHP\$	+\$154		SCR +1.9	60%R



7JE2120 VICTORY RHONDAS BIG RED-ET 8403232102810

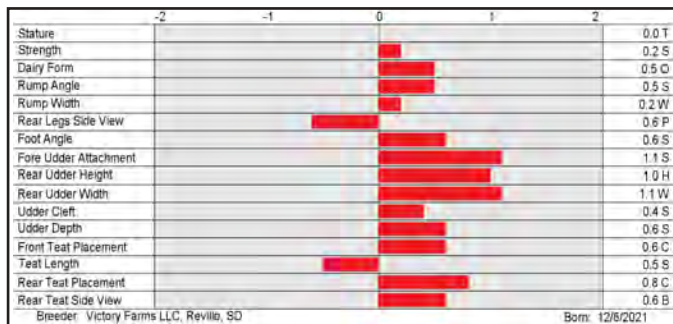
Bancroft x Lexicon-P x Sambo

BBR: 100 JH1F JNS-TF DMS: 234,123 aAa: 543 B-Casein: A2A2 K-Casein: BB

CDCB-S Genomic Evaluation		(04/25)		
Milk	-8	79%R	Net Merit (77%R)	+\$57
Protein	+0.05%	+9	Cheese Merit	+\$71
Fat	-0.02%	-5	CFP	+4

CDCB-S/AJCA Genomic Evaluation		(04/25)		
Type	+0.8	81%R	+19.0JUI	GJPI +75

Health and Fertility		(04/25)	CDCB/Zoetis Data	
SCS	2.94	78%R	PL +1.1	77%R
DPR	-0.4	74%R	HCR -0.9	67%R
DWP\$	+\$57		WT\$ -\$66	
M FVR	83	53%R	MAS +0.9	66%R
HHP\$	+\$184		SCR -3.4	82%R



250JE2131 UNIQUE SKYFALL CAN14305608

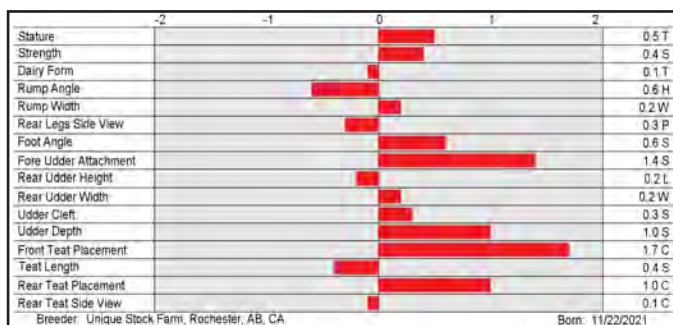
Bosa x Matt x Governor

BBR: 100 JH1F JNS-TF DMS: 561,456 aAa: 435 B-Casein: A2A2 K-Casein: BB

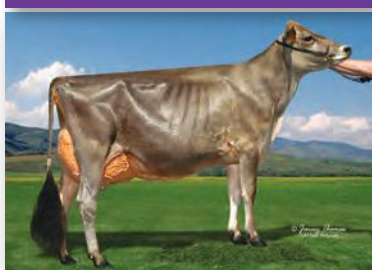
CDCB-S Genomic Evaluation		(04/25)		
Milk	-1,140	78%R	Net Merit (76%R)	-\$236
Protein	+0.09%	-26	Cheese Merit	-\$225
Fat	+0.26%	-10	CFP	-36

CDCB-S/AJCA Genomic Evaluation		(04/25)		
Type	+0.7	81%R	+16.5JUI	GJPI +8

Health and Fertility		(04/25)	CDCB/Zoetis Data	
SCS	3.01	78%R	PL -1.4	75%R
DPR	+0.1	73%R	HCR +0.0	66%R
DWP\$	-\$266		WT\$ -\$12	
M FVR	96	40%R	MAS +1.1	62%R
HHP\$	-\$187		ZMAS 100	43%R



7JE2375 KRONOS-PP



KY-HI CRAZE CRAZEFULL-P-ET (E-94%)
Dam of KRONOS-PP

250JE2220 BRECKEN



FIRE-LAKE FF BIONIC BLESSING-ET (E-90%)
Dam of BRECKEN

7JE2120 BIG RED



SUCESS LEXICON RHONDA (E-93%)
Dam of BIG RED

250JE2131 SKYFALL



REDHOT MATT SKYLINE ET (VG-87%)
Dam of SKYFALL

G F O R C E S I R E S

7JE2163 PRIMUS GUTZ CLEVER-ET 840323627008

BBR: 100 JH1F JNS-TF DMS: 345,234 aAa: 312 B-Casein: A2A2 K-Casein: BB

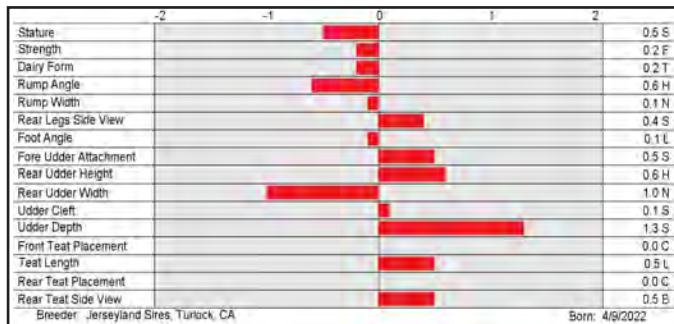
CDCB-S Genomic Evaluation		(04/25)	
Milk	+248	79%R	Net Merit (76%R) +\$445
Protein	+0.03%	+15	Cheese Merit +\$459
Fat	+0.18%	+47	CFP +62

CDCB-S/AJCA Genomic Evaluation		(04/25)	
Type	+0.2	80%R	+16.5JUI
			GJPI +157

Health and Fertility		(04/25)		CDCB/Zoetis Data	
SCS	2.87	77%R	PL +2.3	75%R	LIV +1.4
DPR	+1.2	72%R	HCR +2.4	62%R	CCR +2.7
DWP\$	+\$536		WT\$ +\$65		CW\$ +\$24
M FVR	107	44%R	MAS +0.4	58%R	ZMAS 103
HHP\$	+\$543				47%R



Vj Gutz x Viceroy x Lemonhead



7JE2315 VERJATIN REDBULL-ET CAN121195847

BBR: 100 JH1F JNS-TF B-Casein: A2A2 K-Casein: BB

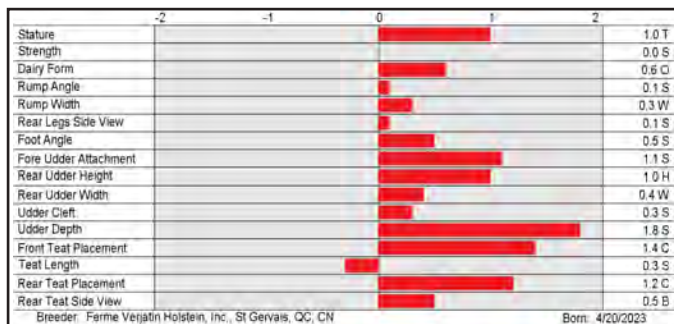
CDCB-S Genomic Evaluation		(04/25)	
Milk	+31	77%R	Net Merit (75%R) +\$347
Protein	+0.07%	+14	Cheese Merit +\$367
Fat	+0.23%	+45	CFP +59

CDCB-S/AJCA Genomic Evaluation		(04/25)	
Type	+0.8	79%R	+20.3JUI
			GJPI +137

Health and Fertility		(04/25)		CDCB/Zoetis Data	
SCS	2.90	76%R	PL +1.9	74%R	LIV +1.0
DPR	-0.3	71%R	HCR -0.3	64%R	CCR -0.4
DWP\$	+\$502		WT\$ +\$76		CW\$ +\$52
M FVR	102	35%R	MAS +1.3	61%R	ZMAS 107
HHP\$	+\$446				40%R



Wingman x Lancer x Cohort



7JE2258 DUPAT UNCOMMON FORREAL-ET 8403242639212

BBR: 100 JH1F JNS-TF aAa: 354 B-Casein: A2A2 K-Casein: BB

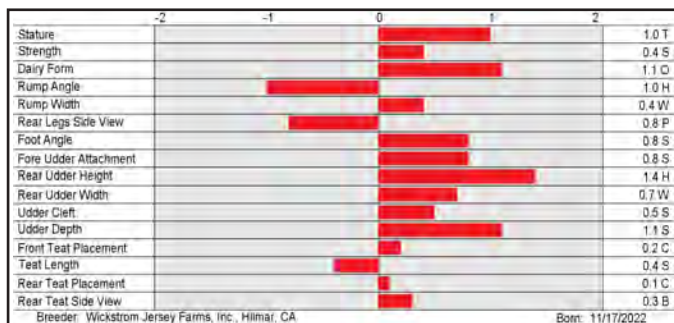
CDCB-S Genomic Evaluation		(04/25)	
Milk	+563	79%R	Net Merit (76%R) +\$337
Protein	+0.02%	+25	Cheese Merit +\$350
Fat	+0.03%	+35	CFP +60

CDCB-S/AJCA Genomic Evaluation		(04/25)	
Type	+1.1	80%R	+20.4JUI
			GJPI +136

Health and Fertility		(04/25)		CDCB/Zoetis Data	
SCS	2.89	77%R	PL +1.4	74%R	LIV +0.9
DPR	-0.3	71%R	HCR +0.8	64%R	CCR +0.6
DWP\$	+\$483		WT\$ +\$40		CW\$ +\$34
M FVR	93	39%R	MAS -0.2	60%R	ZMAS 103
HHP\$	+\$449				41%R



Uncommon x Fearless x Sparky



7JE2102 DUPAT FIRSTCUT-ET 8403209722037

BBR: 100 JH1F JNS-TF DMS: 561,126 aAa: 246 B-Casein: A2A2 K-Casein: BB

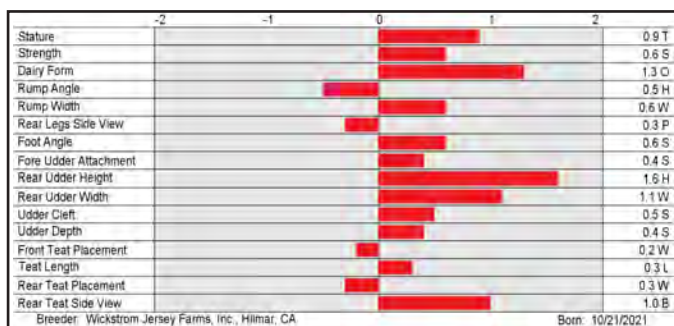
CDCB-S Genomic Evaluation		(04/25)	
Milk	+498	80%R	Net Merit (78%R) +\$184
Protein	+0.02%	+22	Cheese Merit +\$193
Fat	-0.02%	+20	CFP +42

CDCB-S/AJCA Genomic Evaluation		(04/25)	
Type	+1.2	82%R	+19.0JUI
			GJPI +88

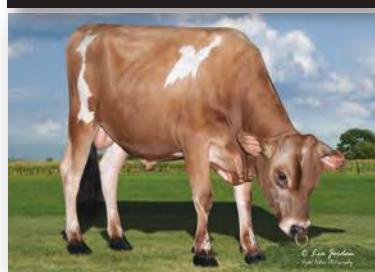
Health and Fertility		(04/25)		CDCB/Zoetis Data	
SCS	3.04	79%R	PL +1.1	77%R	LIV +1.0
DPR	-0.5	75%R	HCR -1.4	69%R	CCR -0.7
DWP\$	+\$291		WT\$ +\$81		CW\$ -\$71
M FVR	97	49%R	MAS -3.1	67%R	ZMAS 108
HHP\$	+\$96		SCR +0.1	76%R	54%R



Holeinone x Fearless x Sparky

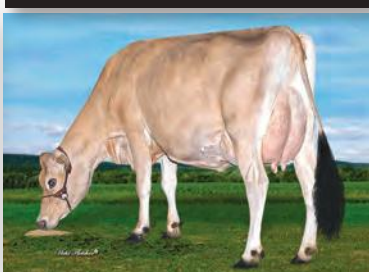


7JE2163 CLEVER



CLEVER

7JE2315 REDBULL



VERJATIN LANCER ELIZABETH-ET (VG-86)
Grandam of REDBULL

7JE2258 FORREAL



DUPAT FEARLESS 15549-ET (E-93%)
Dam of FORREAL

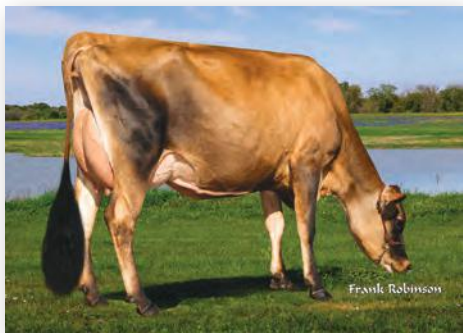
7JE2102 FIRSTCUT



DUPAT FEARLESS 15549-ET (E-93%)
Dam of FIRSTCUT

JX AXWELL {6}

250JE2188 JX DUPAT CORSAIR AXWELL {6}-ET
 8403242639146 BBR 100 JH1F JNS-TF 🍁
 DMS: 123,126 aAa: 423 B-Casein: A2A2 K-Casein: BB



JX DUPAT LEONEL 15192 {4} (E-92%)
 Third dam of JX AXWELL {6}

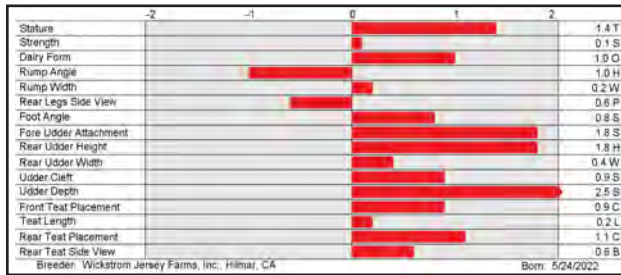


S: JX Primus Rowan CORSAIR {5}-ET
 D: JX Dupat Jiggy 22211 {6}-ET (VG-85%)
 MGS: JX Kash-In Got Jiggy {6}-ET
 MGD: JX Dupat Craze 18121 {5}-ET (VG-87%)
 MGGS: River Valley Circus Craze-ET

CDCB-S Genomic Evaluation			(04/25)	
Milk	+1,073	79%R	Net Merit (76%R)	+\$349
Protein	-0.08%	+25	Cheese Merit	+\$340
Fat	-0.12%	+29	CFP	+54

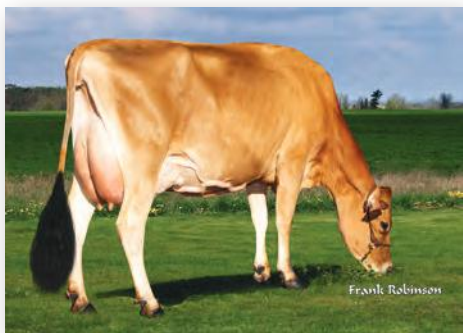
CDCB-S/AJCA Genomic Evaluation			(04/25)	
Type	+1.6	81%R	+21.0JUI	GJPI +114

Health and Fertility		(04/25)		CDCB/Zoetis Data	
SCS	2.96	79%R	PL	+3.1	75%R
DPR	-2.3	74%R	HCR	-0.6	68%R
DWP\$	+\$390		WT\$	+\$20	
M FVR	98	44%R	MAS	-2.6	62%R
HHP\$	+\$282		ZMAS	103	45%R



JX CHIPPER {6}

250JE2282 JX PRIMUS OTIS CHIPPER {6}-ET
 8403258615519 BBR 100 JH1F JNS-TF 🍁
 DMS: 456,246 aAa: 462 B-Casein: A2A2 K-Casein: BB



JX PRIMUS THRASHER CARA 53632 {5}-ET (VG-86%)

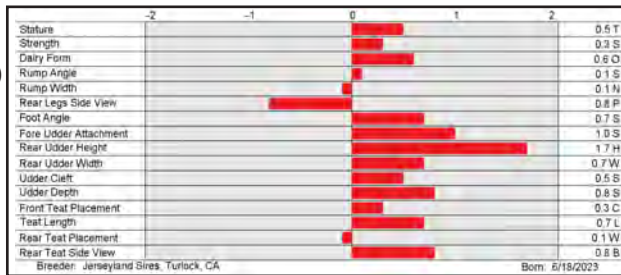


S: S-S-I Victory Tucker OTIS-ET
 D: JX Primus Thrasher Cara 53632 {5}-ET (VG-86%)
 MGS: JX CDF JLS Pilgrim THRASHER {6}-ET
 MGD: JX Primus Fournette Cerys 560 {4}-ET (VG-84%)
 MGGS: JX Faria Brothers FOURNETTE {3}-ET

CDCB-S Genomic Evaluation			(04/25)	
Milk	+627	75%R	Net Merit (73%R)	+\$307
Protein	+0.01%	+25	Cheese Merit	+\$315
Fat	+0.00%	+32	CFP	+57

CDCB-S/AJCA Genomic Evaluation			(04/25)	
Type	+1.1	78%R	+20.1JUI	GJPI +123

Health and Fertility		(04/25)		CDCB/Zoetis Data	
SCS	3.05	74%R	PL	+2.2	72%R
DPR	-0.5	70%R	HCR	+2.2	61%R
DWP\$	+\$366		WT\$	+\$66	
M FVR	86	40%R	MAS	-1.6	59%R
HHP\$	+\$313		ZMAS	103	43%R



JAL-P

250JE2290 GOFF S-S-I SEISMIC JAL-P-ET
 8403274074088 BBR 100 JH1F JNS-TF 🍁
 DMS: 123,126 aAa: 345 B-Casein: A2A2 K-Casein: AB



GOFF DISCO 36341-ET (E-94%)
 Third dam of JAL-P

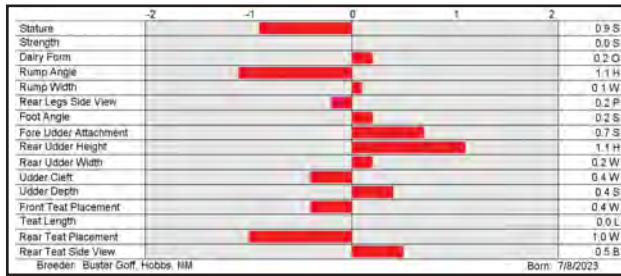


S: Ahlem Dimitri SEISMIC-PP-ET
 D: Goff S-S-I Potogold 63008-ET
 MGS: Clover Farms Jacks POTOGOLD
 MGD: Goff S-S-I Closer 58993-ET
 MGGS: River Valley Circus CLOSER-ET

CDCB-S Genomic Evaluation			(04/25)	
Milk	+71	74%R	Net Merit (71%R)	+\$384
Protein	+0.06%	+15	Cheese Merit	+\$402
Fat	+0.20%	+42	CFP	+57

CDCB-S/AJCA Genomic Evaluation			(04/25)	
Type	+0.6	78%R	+17.8JUI	GJPI +121

Health and Fertility		(04/25)		CDCB/Zoetis Data	
SCS	2.99	74%R	PL	+2.3	72%R
DPR	-1.2	70%R	HCR	+0.4	64%R
DWP\$	+\$592		WT\$	+\$171	
M FVR	105	39%R	MAS	+0.7	58%R
HHP\$	+\$368		ZMAS	112	43%R



JX CARTPATH {6}

507JE2314 JX VICTORY CABAL CARTPATH (6)-ET
 8403281513261 BBR 100 JH1F JNS-TF 🍁
 DMS: 123,135 aAa: 315 B-Casein: A2A2 K-Casein: BB

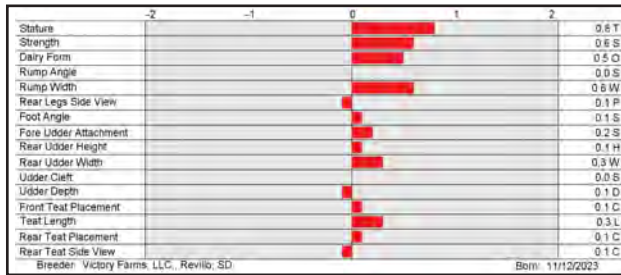


AVAILABLE ONLY IN SEXED SEMEN



S: JX Primus Watkins CABAL (5)-ET
 D: JX Victory 58549 Nicklaus 63419 (6)-ET
 MGS: Victory Thrasher NICKLAUS-ET
 MGD: JX Victory 52571 Jiggy 58549 (5) (VG-80%)
 MGGS: JX Kash-In Got Jiggy (6)-ET

CDCB-S Genomic Evaluation			(04/25)		
Milk	+922	74%R	Net Merit (72%R) +\$385		
Protein	-0.02%	+31	Cheese Merit +\$393		
Fat	-0.14%	+17	CFP +48		
CDCB-S/AJCA Genomic Evaluation			(04/25)		
Type	+0.4	78%R	+14.0JUI	GJPI +157	
Health and Fertility			(04/25) CDCB/Zoetis Data		
SCS	2.85	74%R	PL +4.5	72%R	LIV +3.1 62%R
DPR	+2.1	69%R	HCR +2.4	60%R	CCR +2.2 69%R
DWP\$	+\$692		WT\$ +\$144		CW\$ +\$96
M FVR	106	38%R	MAS -0.8	57%R	ZMAS 110 41%R
HHP\$	+\$530				



JX WYNDHAM {5}

614JE2353 JX VICTORY CHATHAM WYNDHAM (5)-ET
 8403284496589 BBR 100 JH1F JNSC 🍁
 aAa: 345 B-Casein: A2A2 K-Casein: BB



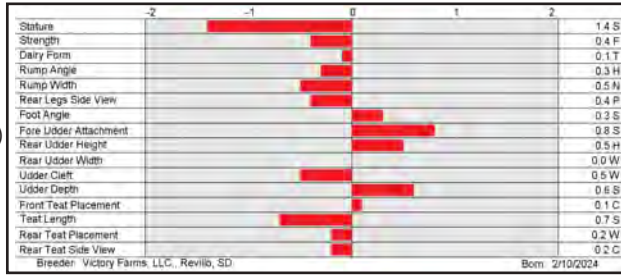
AVAILABLE ONLY IN SEXED SEMEN



JX VICTORY 60495 GEPPETTO 64248 (6)-P-ET

S: JX Primus Enzo CHATHAM (4)-ET
 D: JX Victory 60495 Geppetto 64248 (6)-P-ET
 MGS: Ahlem Gifted GEPPETTO (6)-ET
 MGD: JX Victory Listowel 60495 (5)-P-ET (E-90%)
 MGGS: Hillview Listowel-P

CDCB-S Genomic Evaluation			(04/25)		
Milk	+942	76%R	Net Merit (74%R) +\$663		
Protein	-0.04%	+27	Cheese Merit +\$664		
Fat	-0.01%	+45	CFP +72		
CDCB-S/AJCA Genomic Evaluation			(04/25)		
Type	+0.4	79%R	+16.9JUI	GJPI +194	
Health and Fertility			(04/25) CDCB/Zoetis Data		
SCS	2.85	76%R	PL +6.5	74%R	LIV +2.3 63%R
DPR	+1.4	72%R	HCR +0.7	63%R	CCR +2.1 72%R
DWP\$	+\$778		WT\$ +\$81		CW\$ +\$63
M FVR	108	42%R	MAS +0.1	60%R	ZMAS 106 45%R
HHP\$	+\$667				



PURIFY

614JE2337 S-S-I VICTORY CLEVER PURIFY-ET
 8403284496887 BBR 100 JH1F JNS-TF 🍁
 aAa: 435 B-Casein: A2A2 K-Casein: BB

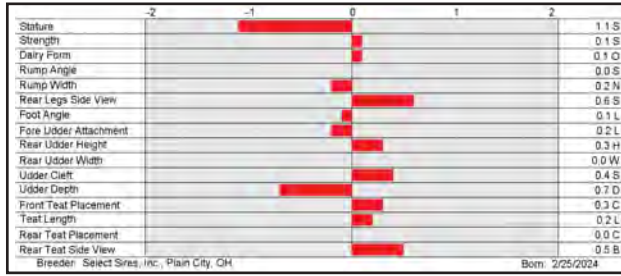


AVAILABLE ONLY IN SEXED SEMEN



S: Primus Gutz CLEVER-ET
 D: S-S-I Victory Geppetto 64160 (6)-ET
 MGS: Ahlem Gifted GEPPETTO (6)-ET
 MGD: Four J Thrasher 21797 (5) (VG-82%)
 MGGS: JX Cdf Jls Pilgrim THRASHER (6)-ET

CDCB-S Genomic Evaluation			(04/25)		
Milk	+782	74%R	Net Merit (71%R) +\$582		
Protein	+0.03%	+36	Cheese Merit +\$600		
Fat	+0.07%	+54	CFP +90		
CDCB-S/AJCA Genomic Evaluation			(04/25)		
Type	+0.1	78%R	+11.4JUI	GJPI +177	
Health and Fertility			(04/25) CDCB/Zoetis Data		
SCS	2.98	74%R	PL +3.5	71%R	LIV +1.3 61%R
DPR	+0.9	69%R	HCR +0.8	60%R	CCR +1.7 69%R
DWP\$	+\$715		WT\$ +\$102		CW\$ +\$2
M FVR	104	37%R	MAS +0.4	56%R	ZMAS 106 40%R
HHP\$	+\$641				



G F O R C E S I R E S

14JE2151 JX S-S-I VICTORY CORSAIR STROUD {6}-ET 8403252418550

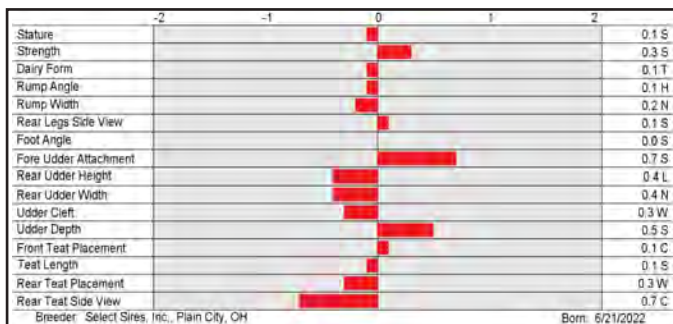
JX Corsair {5} x JX Thrasher {6} x Listowel-P

BBR: 100 JH1F JNS-TF DMS: 456,561 aAa: 423 B-Casein: A2A2 K-Casein: BB

CDCB-S Genomic Evaluation		(04/25)	
Milk	+615	78%R	Net Merit (75%R) +\$461
Protein	+0.01%	+26	Cheese Merit +\$473
Fat	+0.07%	+45	CFP +71

CDCB-S/AJCA Genomic Evaluation		(04/25)	
Type +0.1	80%R	+14.4JUI	GJPI +162

Health and Fertility		(04/25)		CDCB/Zoetis Data		
SCS	2.94	78%R	PL +3.4	74%R	LIV +0.7	65%R
DPR	+0.9	72%R	HCR +1.6	67%R	CCR +1.7	72%R
DWP\$	+\$634		WT\$ +\$19		CW\$ +\$96	
M FVR	92	44%R	MAS +0.0	60%R	ZMAS 105	45%R
HHP\$	+\$552					



14JE2182 JX VICTORY NICKLAUS CHANCES {6}-ET 8403259012209

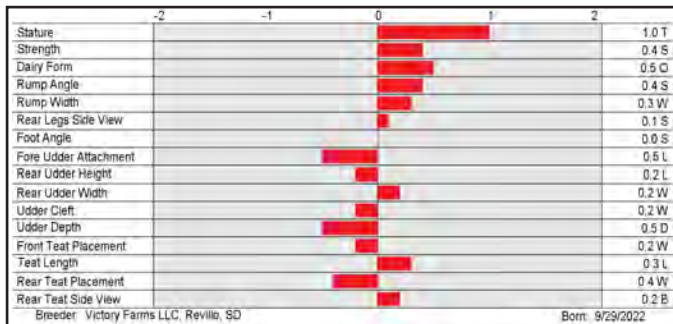
Nicklaus x JX Jiggy {6} x JX Priapus {3}

BBR: 100 JH1F JNS-TF DMS: 126,561 aAa: 243 B-Casein: A2A2 K-Casein: BB

CDCB-S Genomic Evaluation		(04/25)	
Milk	+819	78%R	Net Merit (75%R) +\$472
Protein	+0.02%	+34	Cheese Merit +\$489
Fat	+0.04%	+50	CFP +84

CDCB-S/AJCA Genomic Evaluation		(04/25)	
Type +0.2	80%R	+11.7JUI	GJPI +154

Health and Fertility		(04/25)		CDCB/Zoetis Data		
SCS	2.82	78%R	PL +3.2	75%R	LIV +0.9	66%R
DPR	-0.1	73%R	HCR +0.0	66%R	CCR +0.0	73%R
DWP\$	+\$630		WT\$ +\$30		CW\$ +\$49	
M FVR	102	46%R	MAS -1.7	61%R	ZMAS 100	48%R
HHP\$	+\$490					



14JE2169 JX VALSIGNA STONEY DYNASTAR {4}-ET 8403247390868

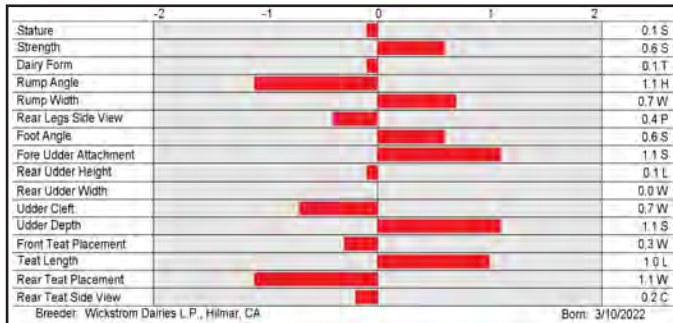
JX Stoney {3} x JX Thrasher {6} x Steve

BBR: 100 JH1F JNS-TF DMS: 456,345 aAa: 426 B-Casein: A2A2 K-Casein: BB

CDCB-S Genomic Evaluation		(04/25)	
Milk	+229	77%R	Net Merit (75%R) +\$462
Protein	+0.06%	+20	Cheese Merit +\$482
Fat	+0.17%	+45	CFP +65

CDCB-S/AJCA Genomic Evaluation		(04/25)	
Type +0.3	80%R	+16.8JUI	GJPI +159

Health and Fertility		(04/25)		CDCB/Zoetis Data		
SCS	2.93	77%R	PL +4.8	75%R	LIV +2.5	67%R
DPR	+0.7	73%R	HCR +0.3	66%R	CCR +0.3	73%R
DWP\$	+\$553		WT\$ +\$81		CW\$ +\$28	
M FVR	102	49%R	MAS -0.3	65%R	ZMAS 105	52%R
HHP\$	+\$508					



14JE2239 VICTORY NICKLAUS SCHEFFLER-ET 8403259011936

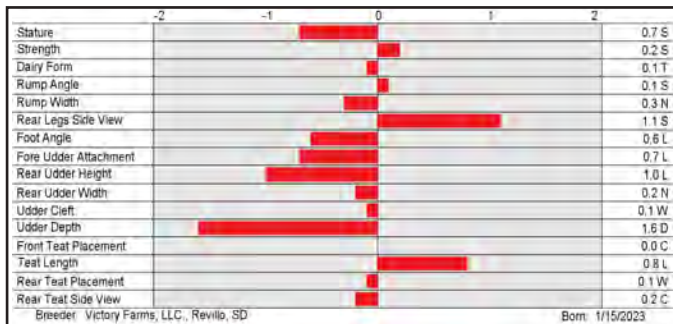
Nicklaus x Watkins x JX Chief {6}

BBR: 100 JH1F JNS-TF DMS: 234,123 aAa: 351 B-Casein: A2A2 K-Casein: BB

CDCB-S Genomic Evaluation		(04/25)	
Milk	+625	77%R	Net Merit (75%R) +\$599
Protein	+0.09%	+41	Cheese Merit +\$634
Fat	+0.16%	+63	CFP +104

CDCB-S/AJCA Genomic Evaluation		(04/25)	
Type -0.4	80%R	+6.2JUI	GJPI +169

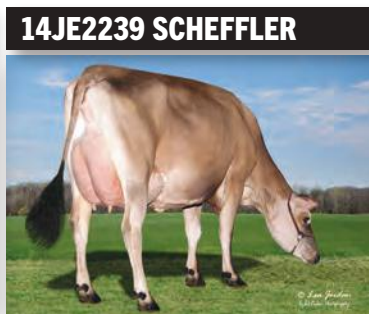
Health and Fertility		(04/25)		CDCB/Zoetis Data		
SCS	2.81	77%R	PL +4.1	74%R	LIV -0.5	65%R
DPR	-0.9	72%R	HCR +0.9	65%R	CCR -0.2	72%R
DWP\$	+\$891		WT\$ +\$136		CW\$ +\$88	
M FVR	102	43%R	MAS -1.9	60%R	ZMAS 108	44%R
HHP\$	+\$547					



OFFSPRING NOT ELIGIBLE FOR REGISTRY IN CANADA



VALSIGNA STEVE 30482 (VG-86%)
Grandam of JX DYNASTAR {4}



JX VICTORY 50891 CHIEF 56815 {5} (VG-85%)
Grandam of SCHEFFLER

ODESZA

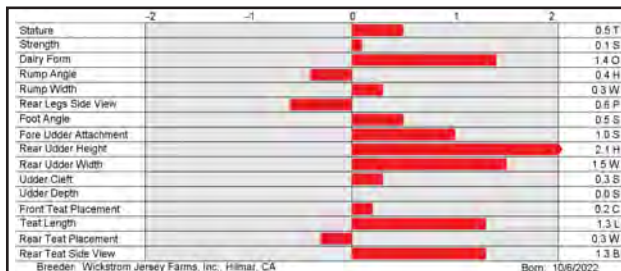
7JE2227 DUPAT BLIZZARD ODESZA-ET
8403242639203 BBR 100 JH1F JNS-TF
B-Casein: A2A2 K-Casein: BB



DUPAT CHIEF 22930 (VG-84%)

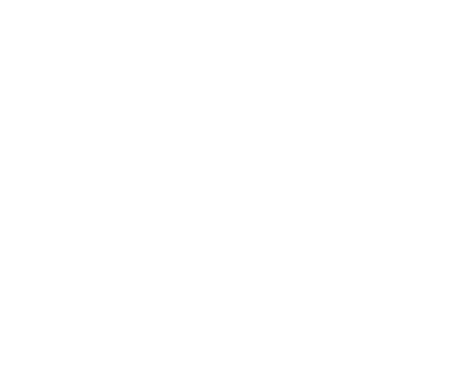
S: Valsigna Pine BLIZZARD
D: Dupat Chief 22930 (VG-84%)
MGS: JX River Valley Chief {6}-ET
MGD: Dupat Bancroft 18100 (VG-83%)
MGGS: Ahlem Axis Bancroft-ET

CDCB-S Genomic Evaluation			(04/25)		
Milk	+1,234	78%R	Net Merit (76%R) +\$531		
Protein	-0.05%	+37	Cheese Merit +\$535		
Fat	-0.08%	+46	CFP +83		
CDCB-S/AJCA Genomic Evaluation			(04/25)		
Type	+1.6	81%R	+19.9JUI	GJPI +174	
Health and Fertility			(04/25) CDCB/Zoetis Data		
SCS	2.81	78%R	PL +4.5	75%R	LIV -0.5 66%R
DPR	-1.3	73%R	HCR +1.7	68%R	CCR -0.2 73%R
DWP\$	+\$694		WT\$ +\$64		CW\$ +\$44
M FVR	100	47%R	MAS -0.5	62%R	ZMAS 103 45%R
HHP\$	+\$576				



JX SLAM {6}

7JE2236 JXS-S-ICOBLESKILL BEST GRANDSLAM {6}-ET
8403248211492 BBR 100 JH1F JNS-TF
DMS: 234,246 aAa: 435 B-Casein: A2A2 K-Casein: BB



JX VICTORY CALIBAN BESTBALL {5}-ET

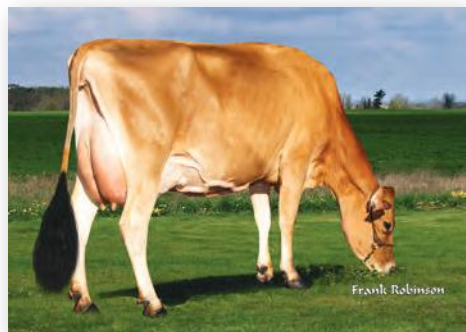
S: JX Victory Caliban BESTBALL {5}-ET
D: Four J Thrasher 21797 {5} (VG-82%)
MGS: JX CDF JLS Pilgrim THRASHER {6}-ET
MGD: Four J Listowel 12382 {4}-P (VG-83%)
MGGS: Hillview Listowel-P

CDCB-S Genomic Evaluation			(04/25)		
Milk	+501	76%R	Net Merit (74%R) +\$475		
Protein	+0.04%	+26	Cheese Merit +\$495		
Fat	+0.12%	+48	CFP +74		
CDCB-S/AJCA Genomic Evaluation			(04/25)		
Type	+0.1	78%R	+14.2JUI	GJPI +171	
Health and Fertility			(04/25) CDCB/Zoetis Data		
SCS	2.77	75%R	PL +3.6	73%R	LIV -0.4 63%R
DPR	+0.6	70%R	HCR +1.9	62%R	CCR +1.8 70%R
DWP\$	+\$487		WT\$ -\$2		CW\$ +\$0
M FVR	89	40%R	MAS +0.1	59%R	ZMAS 101 43%R
HHP\$	+\$580				



JX COLLEGE {6}

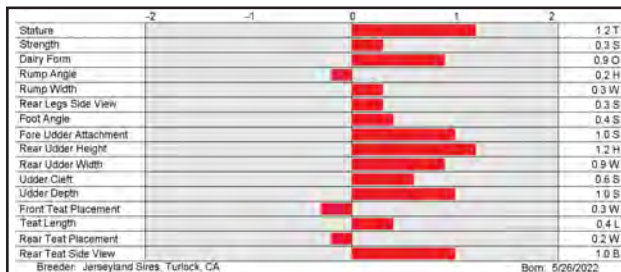
7JE2221 JX PRIMUS GRADUATE COLLEGE {6}-ET
8403236267024 BBR 100 JH1F JNS-TF
DMS: 123,135 aAa: 234 B-Casein: A2A2 K-Casein: BB



JX PRIMUS THRASHER CARA 53632 {5}-ET (VG-86%)

S: BW GRADUATE
D: JX Primus Thrasher Cara 53632 {5}-ET (VG-86%)
MGS: JX Cdf Jls Pilgrim THRASHER {6}-ET
MGD: JX Primus Fournette Cerys 560 {4}-ET (VG-84%)
MGGS: JX Faria Brothers FOURNETTE {3}-ET

CDCB-S Genomic Evaluation			(04/25)		
Milk	+943	78%R	Net Merit (76%R) +\$357		
Protein	-0.03%	+29	Cheese Merit +\$359		
Fat	-0.11%	+24	CFP +53		
CDCB-S/AJCA Genomic Evaluation			(04/25)		
Type	+1.1	80%R	+20.3JUI	GJPI +160	
Health and Fertility			(04/25) CDCB/Zoetis Data		
SCS	2.93	78%R	PL +4.3	75%R	LIV -1.1 66%R
DPR	+1.7	74%R	HCR +2.7	67%R	CCR +2.7 74%R
DWP\$	+\$468		WT\$ +\$41		CW\$ -\$19
M FVR	94	44%R	MAS -2.2	62%R	ZMAS 102 46%R
HHP\$	+\$429				



G F O R C E S I R E S

JX POSTON {5}

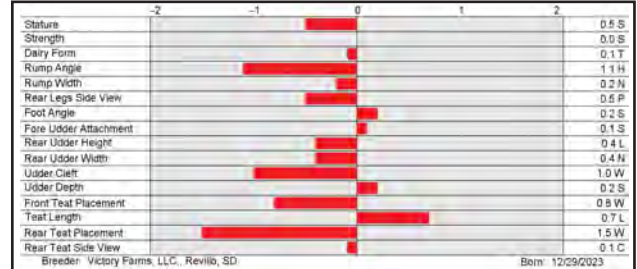
14JE2339 JX VICTORY DYNASTAR POSTON {5}-ET
 8403284496392 BBR 100 JH1F JNS-TF 🍁
 DMS: 135,561 aAa: 312 B-Casein: A2A2 K-Casein: BB



CDCB-S Genomic Evaluation			(04/25)	
Milk	+399	73%R	Net Merit (71%R)	+\$526
Protein	+0.03%	+21	Cheese Merit	+\$541
Fat	+0.12%	+44	CFP	+65

CDCB-S/AJCA Genomic Evaluation			(04/25)	
Type -0.1	77%R		+11.7JUI	GJPI +155

Health and Fertility		(04/25)				CDCB/Zoetis Data		
SCS	2.92	73%R	PL	+4.9	71%R	LIV	+2.7	60%R
DPR	+1.4	69%R	HCR	+0.9	59%R	CCR	+0.9	69%R
DWP\$	+\$593		WT\$	+\$25		CW\$	+\$65	
M FVR	106	34%R	MAS	-1.3	57%R	ZMAS	100	37%R
HHP\$	+\$476							



S: JX Valsigna Stoney DYNASTAR {4}-ET
 D: JX Victory 56462 Steno 63709 {4} (VG-80%)
 MGS: Isdk Vj Tudvad Samson Steno
 MGD: JX Victory 46176 Jiggy 56462 {3} (VG-83%)
 MGGS: JX Kash-In Got Jiggy {6}-ET

JX CABAL {5}

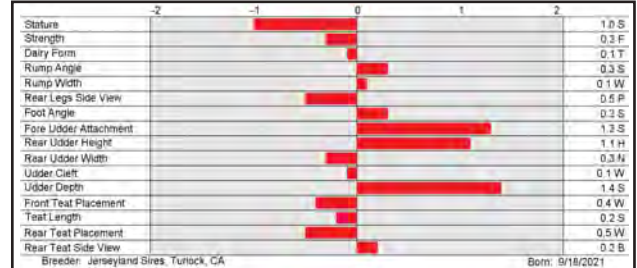
14JE2107 JX PRIMUS WATKINS CABAL {5}-ET
 8403203110539 BBR 100 JH1F JNS-TF 🍁
 DMS: 561,126 aAa: 324 B-Casein: A2A2 K-Casein: BB



CDCB-S Genomic Evaluation			(04/25)	
Milk	+267	78%R	Net Merit (75%R)	+\$414
Protein	-0.01%	+9	Cheese Merit	+\$418
Fat	+0.00%	+13	CFP	+22

CDCB-S/AJCA Genomic Evaluation			(04/25)	
Type +0.8	80%R		+20.9JUI	GJPI +154

Health and Fertility		(04/25)				CDCB/Zoetis Data		
SCS	2.85	77%R	PL	+6.5	74%R	LIV	+2.1	63%R
DPR	+2.0	71%R	HCR	+1.4	61%R	CCR	+2.8	71%R
DWP\$	+\$617		WT\$	+\$144		CW\$	+\$119	
M FVR	109	44%R	MAS	-0.2	60%R	ZMAS	110	47%R
HHP\$	+\$491							



S: S-S-I Victory Dashiell WATKINS-ET
 D: JX Primus Fournette Cerys 560 {4}-ET (VG-84%)
 MGS: JX Faria Brothers FOURNETTE {3}-ET
 MGD: River Valley Lemonhead Carnival-ET
 MGGS: Steinhauers Samson LEMONHEAD



JX PRIMUS FOURNETTE CERYS 560 {4}-ET (VG-84%)

JX INXS {6}

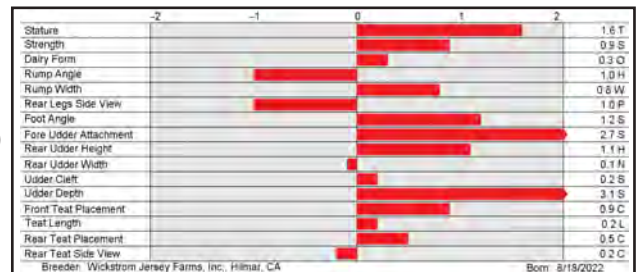
14JE2222 JX DUPAT CORSAIR INXS {6}-ET
 8403242639186 BBR 100 JH1F JNS-TF 🍁
 DMS: 561,135 aAa: 243 B-Casein: A2A2 K-Casein: BB



CDCB-S Genomic Evaluation			(04/25)	
Milk	+575	78%R	Net Merit (76%R)	+\$386
Protein	+0.03%	+27	Cheese Merit	+\$404
Fat	+0.05%	+39	CFP	+66

CDCB-S/AJCA Genomic Evaluation			(04/25)	
Type +1.3	81%R		+19.0JUI	GJPI +155

Health and Fertility		(04/25)				CDCB/Zoetis Data		
SCS	2.80	78%R	PL	+4.1	75%R	LIV	+1.4	66%R
DPR	-0.6	73%R	HCR	+0.3	68%R	CCR	-0.8	73%R
DWP\$	+\$636		WT\$	+\$97		CW\$	+\$23	
M FVR	102	45%R	MAS	-1.0	61%R	ZMAS	106	46%R
HHP\$	+\$511							



S: JX Primus Rowan CORSAIR {5}-ET
 D: JX Dupat Thrasher 22814 {6}-ET (VG-83%)
 MGS: JX CDF JLS Pilgrim THRASHER {6}-ET
 MGD: JX Dupat Got Maid 18781 {5}-ET (VG-86%)
 MGGS: JX Sunset Canyon Got Maid {5}-ET



JX DUPAT THRASHER 22814 {6}-ET (VG-83%)

WARREN {6}

7JE2157 S-S-I VICTORY GEPPETTO WARREN {6}-ET
 8403241109421 BBR 100 JH1F JNS-TF
 DMS: 345,135 aAa: 324 B-Casein: A2A2 K-Casein: BB

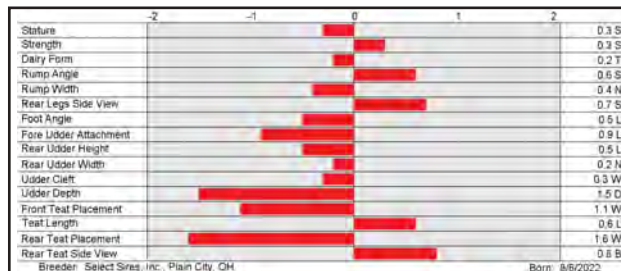


S: Ahlem Gifted GEPPETTO {6}-ET
 D: Four J Thrasher 21797 {5} (VG-82%)
 MGS: JX CDF JLS Pilgrim THRASHER {6}-ET
 MGD: Four J Listowel 12382 {4}-P (VG-83%)
 MGGS: Hillview Listowel-P

CDCB-S Genomic Evaluation			(04/25)	
Milk	+1,166	78%R	Net Merit (75%R)	+\$562
Protein	-0.01%	+42	Cheese Merit	+\$572
Fat	-0.10%	+38	CFP	+80

CDCB-S/AJCA Genomic Evaluation			(04/25)	
Type -0.5	80%R		+6.3JUI	GJPI +178

Health and Fertility			(04/25)			CDCB/Zoetis Data		
SCS	3.01	77%R	PL	+5.0	74%R	LIV	+1.9	64%R
DPR	+1.9	72%R	HCR	+0.2	66%R	CCR	+2.7	72%R
DWP\$	+\$829		WT\$	+\$126		CW\$	+\$109	
M FVR	104	43%R	MAS	-0.4	59%R	ZMAS	107	45%R
HHP\$	+\$660							



MATEO

7JE2229 KASH-IN MATEO-ET
 8403221920398 BBR 100 JH1F JNS-TF
 aAa: 324 B-Casein: A2A2 K-Casein: BB

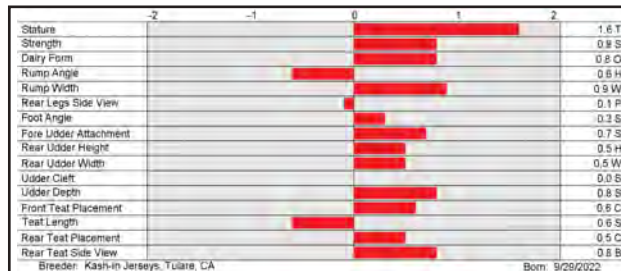


S: Valsigna Pine BLIZZARD
 D: Kash-In Jiggy 65750 {6} (VG-84%)
 MGS: JX Kash-In Got Jiggy {6}-ET
 MGD: Kash-In Chrome 51239 {5} (E-90%)
 MGGS: River Valley Cece CHROME-ET

CDCB-S Genomic Evaluation			(04/25)	
Milk	+540	78%R	Net Merit (76%R)	+\$381
Protein	+0.03%	+27	Cheese Merit	+\$398
Fat	+0.02%	+31	CFP	+58

CDCB-S/AJCA Genomic Evaluation			(04/25)	
Type +0.8	81%R		+17.3JUI	GJPI +161

Health and Fertility			(04/25)			CDCB/Zoetis Data		
SCS	2.90	78%R	PL	+4.5	75%R	LIV	+2.1	67%R
DPR	+0.6	74%R	HCR	+1.2	68%R	CCR	+2.1	73%R
DWP\$	+\$618		WT\$	+\$102		CW\$	+\$41	
M FVR	104	46%R	MAS	-0.7	62%R	ZMAS	107	44%R
HHP\$	+\$506							



BIRKDALE {5}

7JE2207 VICTORY BLIZZARD BIRKDALE {5}-ET
 8403257224740 BBR 100 JH1F JNS-TF
 DMS: 561,126 aAa: 342 B-Casein: A2A2 K-Casein: BB



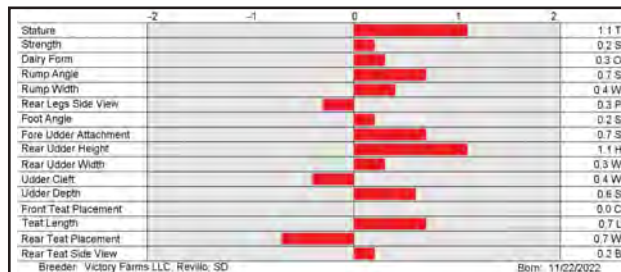
VICTORY 51451 CHIEF 57692 {4} (E-90%)

S: Valsigna Pine BLIZZARD
 D: Victory 51451 Chief 57692 {4} (E-90%)
 MGS: JX River Valley Chief {6}-ET
 MGD: Victory 41052 Barricade 51451 {3}
 MGGS: Cal-Mart Barricade

CDCB-S Genomic Evaluation			(04/25)	
Milk	+729	78%R	Net Merit (76%R)	+\$420
Protein	-0.01%	+25	Cheese Merit	+\$428
Fat	+0.05%	+46	CFP	+71

CDCB-S/AJCA Genomic Evaluation			(04/25)	
Type +0.7	80%R		+18.1JUI	GJPI +158

Health and Fertility			(04/25)			CDCB/Zoetis Data		
SCS	2.83	78%R	PL	+3.1	75%R	LIV	+0.4	67%R
DPR	-0.5	74%R	HCR	+1.1	68%R	CCR	+0.6	73%R
DWP\$	+\$707		WT\$	+\$191		CW\$	+\$24	
M FVR	104	49%R	MAS	+0.3	62%R	ZMAS	111	47%R
HHP\$	+\$527							



G F O R C E S I R E S

JX HOYLAKE {5}

7JE2318 JX VICTORY CABAL HOYLAKE {5}
 8403281513729 BBR 93 JH1F JNS-TF 🍁
 DMS: 135,345 aAa: 534 B-Casein: A2A2 K-Casein: BB



JX VICTORY 55240 THRASHER 60777 {4} (VG-84%)

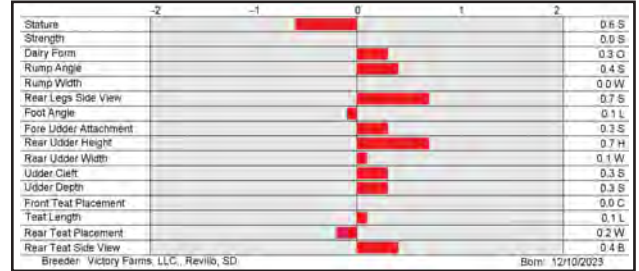


S: JX Primus Watkins CABAL {5}-ET
 D: JX Victory 55240 Thrasher 60777 {4} (VG-84%)
 MGS: JX CDF JLS Pilgrim THRASHER {6}-ET
 MGD: JX Victory 40965 Stoney 55240 {3} (VG-80%)
 MGGS: JX Spring Creek Marlo STONEY {3}-ET

CDCB-S Genomic Evaluation			(04/25)	
Milk	+762	75%R	Net Merit (72%R)	+\$428
Protein	-0.03%	+22	Cheese Merit	+\$430
Fat	-0.06%	+26	CFP	+48

CDCB-S/AJCA Genomic Evaluation			(04/25)	
Type +0.4	78%R		+15.9JUI	GJPI +148

Health and Fertility			(04/25)			CDCB/Zoetis Data		
SCS	2.84	74%R	PL	+5.1	71%R	LIV	+0.5	61%R
DPR	+0.6	68%R	HCR	+0.8	59%R	CCR	+0.7	68%R
DWP\$	+\$425		WT\$	+\$30		CW\$	-\$12	
M FVR	104	37%R	MAS	-0.3	57%R	ZMAS	102	41%R
HHP\$	+\$467							



JX JULIUS {6}

7JE2186 JX SUNBOW JLS CORSAIR JULIUS {6}-ET
 8403250244886 BBR 100 JH1F JNS-TF 🍁
 DMS: 345,234 aAa: 243 B-Casein: A2A2 K-Casein: BB



JX JULIUS {6}



S: JX Primus Rowan CORSAIR {5}-ET
 D: Sunbow Skyler Julia 29314
 MGS: Progenesis Skyler ET
 MGD: Aj Pilgrim 3095 (VG-84%)
 MGGS: Cal-Mart Medalist Pilgrim

CDCB-S Genomic Evaluation			(04/25)	
Milk	+485	78%R	Net Merit (76%R)	+\$383
Protein	+0.00%	+19	Cheese Merit	+\$391
Fat	+0.10%	+44	CFP	+63

CDCB-S/AJCA Genomic Evaluation			(04/25)	
Type +0.7	80%R		+22.5JUI	GJPI +145

Health and Fertility			(04/25)			CDCB/Zoetis Data		
SCS	2.91	78%R	PL	+2.2	75%R	LIV	+0.8	66%R
DPR	+0.1	73%R	HCR	+0.3	68%R	CCR	+1.1	73%R
DWP\$	+\$518		WT\$	+\$13		CW\$	+\$50	
M FVR	99	45%R	MAS	-1.6	61%R	ZMAS	102	46%R
HHP\$	+\$382							



JX MULLIGAN {6}

14JE2159 JX VICTORY NICKLAUS MULLIGAN {6}-ET
 8403252418033 BBR 100 JH1F JNS-TF 🍁
 DMS: 135,561 aAa: 231 B-Casein: A2A2 K-Casein: BB

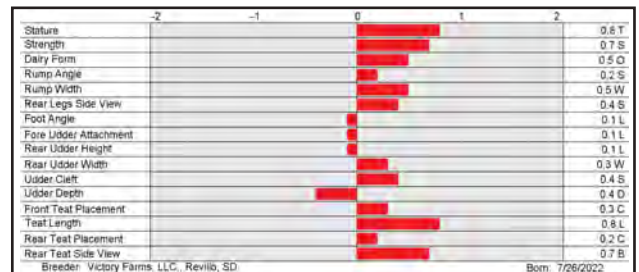


S: Victory Thrasher NICKLAUS-ET
 D: JX Victory 50512 Jiggy 56544 {5} (VG-80%)
 MGS: JX Kash-In Got Jiggy {6}-ET
 MGD: JX Victory 45188 Priapus 50512 {4}
 MGGS: JX Crosswind PRIAPUS {3}

CDCB-S Genomic Evaluation			(04/25)	
Milk	+894	78%R	Net Merit (76%R)	+\$448
Protein	-0.02%	+30	Cheese Merit	+\$456
Fat	+0.00%	+45	CFP	+75

CDCB-S/AJCA Genomic Evaluation			(04/25)	
Type +0.6	80%R		+11.5JUI	GJPI +157

Health and Fertility			(04/25)			CDCB/Zoetis Data		
SCS	2.86	78%R	PL	+3.8	75%R	LIV	+1.2	67%R
DPR	+0.2	74%R	HCR	+0.0	68%R	CCR	+0.4	74%R
DWP\$	+\$701		WT\$	+\$80		CW\$	+\$113	
M FVR	104	45%R	MAS	-0.4	62%R	ZMAS	104	47%R
HHP\$	+\$514							



G F O R C E S I R E S

SMITH

14JE2241 S-S-I VICTORY DURAMAX SMITH-ET
 8403259012062 BBR 100 JH1F JNS-TF 🍁
 DMS: 126,123 aAa: 351 B-Casein: A2A2 K-Casein: BB



S: Legendary DURAMAX-ET
 D: JX S-S-I Victory Colgate 61733 (6)-ET (VG-80%)
 MGS: JX Ahlem Chrome COLGATE (6)
 MGD: JX Rowleys 1942 Jiggy 2435 (5)
 MGGs: JX Kash-In Got Jiggy (6)-ET

CDCB-S Genomic Evaluation			(04/25)		
Milk	+1,386	75%R		Net Merit (73%R)	+\$518
Protein	-0.04%	+43		Cheese Merit	+\$526
Fat	-0.15%	+38		CFP	+81
CDCB-S/AJCA Genomic Evaluation			(04/25)		
Type +0.1	78%R			+9.5JUI	GJPI +153
Health and Fertility			(04/25) CDCB/Zoetis Data		
SCS	2.75	74%R	PL +3.5	72%R	LIV -1.4 61%R
DPR	-0.8	69%R	HCR -0.6	59%R	CCR -0.2 69%R
DWP\$	+\$526		WT\$ -\$16		CW\$ +\$1
M FVR	98	37%R	MAS -1.8	57%R	ZMAS 99 37%R
HHP\$	+\$431				

HOVLAND

14JE2240 VICTORY UNCOMMON HOVLAND-ET
 8403257225043 BBR 100 JH1F JNS-TF 🍁
 DMS: 345,234 aAa: 534 B-Casein: A2A2 K-Casein: BB



JX VICTORY 50891 CHIEF 56815 (5) (VG-85%)

S: Valsigna Gislev UNCOMMON-ET
 D: JX Victory 56815 Watkins 61617 (6)-ET (VG-80%)
 MGS: S-S-I Victory Dashiell WATKINS-ET
 MGD: JX Victory 50891 Chief 56815 (5) (VG-85%)
 MGGs: JX River Valley Chief (6)-ET

CDCB-S Genomic Evaluation			(04/25)		
Milk	+573	76%R		Net Merit (74%R)	+\$427
Protein	+0.02%	+26		Cheese Merit	+\$442
Fat	+0.03%	+34		CFP	+60
CDCB-S/AJCA Genomic Evaluation			(04/25)		
Type +0.2	79%R			+14.1JUI	GJPI +147
Health and Fertility			(04/25) CDCB/Zoetis Data		
SCS	2.88	75%R	PL +3.4	72%R	LIV +0.7 64%R
DPR	+0.0	70%R	HCR +0.9	63%R	CCR +1.1 70%R
DWP\$	+\$618		WT\$ +\$101		CW\$ +\$82
M FVR	104	41%R	MAS +0.4	58%R	ZMAS 108 39%R
HHP\$	+\$495				

JX CERBERUS {6}

14JE2189 JX PRIMUS MONSTER CERBERUS (6)-ET
 8403236267034 BBR 100 JH1F JNS-TF 🍁
 DMS: 135,561 aAa: 234 B-Casein: A2A2 K-Casein: BB



JX PRIMUS THRASHER CARA 53632 (5)-ET (VG-86%)

S: Four J MONSTER (6)-P-ET
 D: JX Primus Thrasher Cara 53632 (5)-ET (VG-86%)
 MGS: JX Cdf Jls Pilgrim THRASHER (6)-ET
 MGD: JX Primus Fournette Cerys 560 (4)-ET (VG-84%)
 MGGs: JX Faria Brothers FOURNETTE (3)-ET

CDCB-S Genomic Evaluation			(04/25)		
Milk	+415	78%R		Net Merit (76%R)	+\$386
Protein	+0.04%	+23		Cheese Merit	+\$404
Fat	+0.02%	+25		CFP	+48
CDCB-S/AJCA Genomic Evaluation			(04/25)		
Type +0.6	80%R			+14.7JUI	GJPI +147
Health and Fertility			(04/25) CDCB/Zoetis Data		
SCS	2.84	78%R	PL +4.0	75%R	LIV +0.7 66%R
DPR	+1.3	73%R	HCR +2.7	68%R	CCR +1.8 73%R
DWP\$	+\$389		WT\$ +\$32		CW\$ -\$8
M FVR	94	42%R	MAS -0.9	61%R	ZMAS 102 43%R
HHP\$	+\$451				

MIST

7JE2197 MM S-S-I DURAMAX MIST-ET
 8403257224708 BBR 100 JH1F JNS-TF 🍁
 DMS: 126,123 aAa: 534 B-Casein: A2A2 K-Casein: BB



S: Legendary DURAMAX-ET
 D: Mm Tucker Shakira 16493-ET
 MGS: Rowleys 1996 Daniel TUCKER {6}-ET
 MGD: JX Mm Steve Shakira 10734 {6}
 MGGS: Cdf Irwin Steve

CDCB-S Genomic Evaluation			(04/25)	
Milk	+145	75%R	Net Merit (73%R)	+\$381
Protein	+0.09%	+22	Cheese Merit	+\$409
Fat	+0.12%	+31	CFP	+53

CDCB-S/AJCA Genomic Evaluation			(04/25)	
Type +0.7	78%R		+19.7JUI	GJPI +143

Health and Fertility			(04/25)		CDCB/Zoetis Data	
SCS	2.82	74%R	PL +3.3	72%R	LIV	-0.4 61%R
DPR	-0.4	69%R	HCR	+1.3 59%R	CCR	+0.7 69%R
DWP\$	+\$609		WT\$	+\$202	CW\$	+\$24
M FVR	89	39%R	MAS	-0.7 57%R	ZMAS	111 41%R
HHP\$	+\$407					

	-2	-1	0	1	2	
Stature						0.4 S
Strength						0.3 F
Dairy Form						0.3 Q
Rump Angle						0.9 H
Rump Width						0.4 N
Rear Legs Side View						0.6 S
Foot Angle						0.4 S
Fore Udder Attachment						1.0 S
Rear Udder Height						1.0 H
Rear Udder Width						0.3 H
Udder Cleft						0.1 W
Udder Depth						1.6 S
Front Teat Placement						0.6 C
Teat Length						0.1 S
Rear Teat Placement						0.1 W
Rear Teat Side View						0.3 C

Breeder: Misty Meadow Dairy, Tismook, OR Born: 11/24/2022

JX CORONA {6}

7JE2280 JX PRIMUS STURGIS CORONA {6}-ET
 8403258615522 BBR 100 JH1F JNS-TF 🍁
 DMS: 126,123 aAa: 432 B-Casein: A2A2 K-Casein: BB



JX PRIMUS FOURNETTE CERY S 560 {4}-ET (VG-84%)

S: Primus Dashiell STURGIS-ET
 D: JX Primus Tucker Catalina 60269 {5}-ET (VG-86%)
 MGS: Rowleys 1996 Daniel TUCKER {6}-ET
 MGD: JX Primus Fournette Cerys 560 {4}-ET (VG-84%)
 MGGS: JX Faria Brothers FOURNETTE {3}-ET

CDCB-S Genomic Evaluation			(04/25)	
Milk	+256	78%R	Net Merit (75%R)	+\$319
Protein	+0.00%	+9	Cheese Merit	+\$321
Fat	+0.00%	+13	CFP	+22

CDCB-S/AJCA Genomic Evaluation			(04/25)	
Type +1.3	80%R		+23.4JUI	GJPI +130

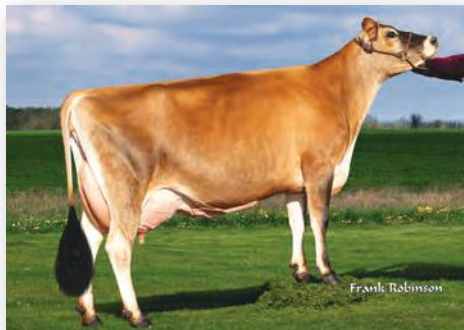
Health and Fertility			(04/25)		CDCB/Zoetis Data	
SCS	3.02	77%R	PL +4.7	74%R	LIV	+2.4 63%R
DPR	+1.8	72%R	HCR	+1.4 64%R	CCR	+2.4 72%R
DWP\$	+\$478		WT\$	+\$82	CW\$	+\$91
M FVR	101	44%R	MAS	-1.6 62%R	ZMAS	104 45%R
HHP\$	+\$360					

	-2	-1	0	1	2	
Stature						0.7 T
Strength						0.1 F
Dairy Form						0.8 Q
Rump Angle						0.1 H
Rump Width						0.3 W
Rear Legs Side View						0.3 P
Foot Angle						0.6 S
Fore Udder Attachment						1.5 S
Rear Udder Height						2.4 H
Rear Udder Width						0.6 W
Udder Cleft						0.4 S
Udder Depth						2.0 S
Front Teat Placement						0.9 C
Teat Length						0.3 L
Rear Teat Placement						0.7 C
Rear Teat Side View						1.1 B

Breeder: Jerseyland Sires, Turlock, CA Born: 8/22/2023

JX KASKADE {5}

7JE2196 JX DUPAT CORSAIR KASKADE {5}-ET
 8403242639157 BBR 100 JH1F JNS-TF 🍁
 DMS: 126,246 aAa: 243 B-Casein: A2A2 K-Casein: BB



JX DUPAT STONEY 20527 {4}-ET (E-90%)

S: JX Primus Rowan CORSAIR {5}-ET
 D: JX Dupat Stoney 20527 {4}-ET (E-90%)
 MGS: JX Spring Creek Marlo STONEY {3}-ET
 MGD: Dupat Fearless 15549-ET (E-93%)
 MGGS: Hi-Land Paul FEARLESS

CDCB-S Genomic Evaluation			(04/25)	
Milk	+372	79%R	Net Merit (76%R)	+\$291
Protein	-0.03%	+9	Cheese Merit	+\$292
Fat	+0.02%	+22	CFP	+31

CDCB-S/AJCA Genomic Evaluation			(04/25)	
Type +1.3	81%R		+21.6JUI	GJPI +135

Health and Fertility			(04/25)		CDCB/Zoetis Data	
SCS	2.79	79%R	PL +3.3	75%R	LIV	+1.9 66%R
DPR	+1.1	73%R	HCR	+2.4 68%R	CCR	+2.3 73%R
DWP\$	+\$401		WT\$	+\$37	CW\$	+\$39
M FVR	100	45%R	MAS	-1.6 62%R	ZMAS	100 45%R
HHP\$	+\$376		SCR	+1.0 48%R		

	-2	-1	0	1	2	
Stature						1.6 T
Strength						0.4 S
Dairy Form						0.9 Q
Rump Angle						0.7 H
Rump Width						0.4 W
Rear Legs Side View						0.7 P
Foot Angle						1.2 S
Fore Udder Attachment						2.2 S
Rear Udder Height						2.0 H
Rear Udder Width						0.3 W
Udder Cleft						0.6 S
Udder Depth						3.0 S
Front Teat Placement						0.3 W
Teat Length						0.9 L
Rear Teat Placement						0.6 W
Rear Teat Side View						0.6 B

Breeder: Wickstrom Jersey Farms, Inc., Hilar, CA Born: 7/1/2022

G F O R C E S I R E S

JX CURVE {6}-PP

7JE2283 JX PRIMUS SEISMIC CURVE {6}-PP-ET
 8403258615507 BBR 100 JH1C JNS-TF
 DMS: 135,561 aAa: 621 B-Casein: A2A2 K-Casein: BB



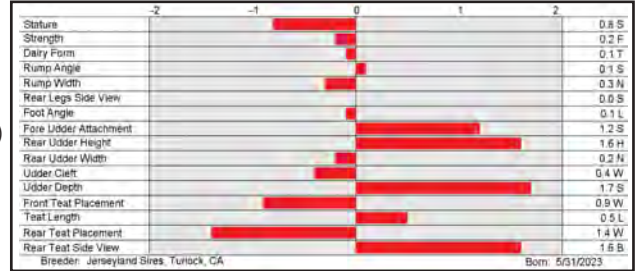
JX PRIMUS FOURNETTE CERYS 560 {4}-ET (VG-84%)

S: Ahlem Dimitri SEISMIC-PP-ET
 D: JX Primus Goals Cirilla 49015 {5}-P-ET
 MGS: JX Jer-Z-Boyz SSI GOALS {5}-P-ET
 MGD: JX Primus Fournette Cerys 560 {4}-ET (VG-84%)
 MGGs: JX Faria Brothers FOURNETTE {3}-ET

CDCB-S Genomic Evaluation			(04/25)	
Milk	+89	74%R	Net Merit (72%R)	+\$447
Protein	+0.05%	+13	Cheese Merit	+\$466
Fat	+0.13%	+30	CFP	+43

CDCB-S/AJCA Genomic Evaluation			(04/25)	
Type	+0.6	78%R	+20.8JUI	GJPI +152

Health and Fertility		(04/25)		CDCB/Zoetis Data	
SCS	2.78	74%R	PL	+5.1	72%R
DPR	+0.1	70%R	HCR	+1.5	64%R
DWP\$	+\$707		WT\$	+\$175	
M FVR	96	37%R	MAS	+0.4	58%R
HHP\$	+\$494		ZMAS	110	40%R



JX BUTTERFLY {5}-P

7JE2233 JX PINE-TREE BUTTERFLY {5}-P-ET
 USA67652888 BBR 100 JH1F JNS-TF
 aAa: 342 B-Casein: A2A2 K-Casein: BB

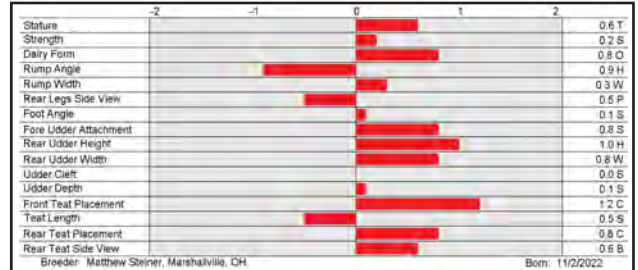


S: Valsigna Pine BLIZZARD
 D: JX Roc-Bot Chief 12620 {4}-P (VG-83%)
 MGS: JX River Valley Chief {6}-ET
 MGD: JX Roc-Bot Listowel 10567 {3}-P
 MGGs: Hillview Listowel-P

CDCB-S Genomic Evaluation			(04/25)	
Milk	+690	78%R	Net Merit (76%R)	+\$456
Protein	+0.04%	+34	Cheese Merit	+\$474
Fat	+0.11%	+57	CFP	+91

CDCB-S/AJCA Genomic Evaluation			(04/25)	
Type	+0.9	81%R	+16.9JUI	GJPI +154

Health and Fertility		(04/25)		CDCB/Zoetis Data	
SCS	3.02	78%R	PL	+2.6	75%R
DPR	-1.5	73%R	HCR	-0.2	68%R
DWP\$	+\$739		WT\$	+\$119	
M FVR	98	46%R	MAS	+0.2	61%R
HHP\$	+\$495		ZMAS	109	44%R



JX UPCYCLE {6}-P

7JE2181 JX VICTORY GEPETTO UPCYCLE {6}-P-ET
 8403259012700 BBR 100 JH1F JNSC
 DMS: 345,456 aAa: 453 B-Casein: A2A2 K-Casein: BB

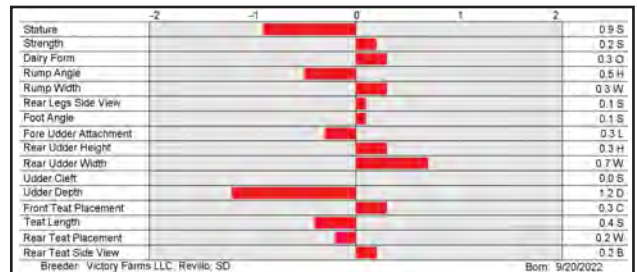


S: Ahlem Gifted GEPETTO {6}-ET
 D: JX Victory Listowel 60495 {5}-P-ET (E-90%)
 MGS: Hillview Listowel-P
 MGD: JX Victory Fournette Jane 55339 {4}
 MGGs: JX Faria Brothers FOURNETTE {3}-ET

CDCB-S Genomic Evaluation			(04/25)	
Milk	+747	77%R	Net Merit (75%R)	+\$527
Protein	+0.05%	+38	Cheese Merit	+\$552
Fat	+0.05%	+48	CFP	+86

CDCB-S/AJCA Genomic Evaluation			(04/25)	
Type	+0.3	79%R	+11.8JUI	GJPI +154

Health and Fertility		(04/25)		CDCB/Zoetis Data	
SCS	2.84	77%R	PL	+4.4	74%R
DPR	-1.5	72%R	HCR	-1.2	66%R
DWP\$	+\$795		WT\$	+\$152	
M FVR	95	47%R	MAS	-0.8	59%R
HHP\$	+\$486		ZMAS	110	49%R



JX VICTORY LISTOWEL 60495 {5}-P-ET (E-90%)

G F O R C E S I R E S

JX CREDITS {6}-P

7JE2320 JX VICTORY CABAL CREDITS {6}-P-ET
 8403281513167 BBR 100 JH1F JNS-TF 🍁
 DMS: 234,345 aAa: 234 B-Casein: A2A2 K-Casein: BB

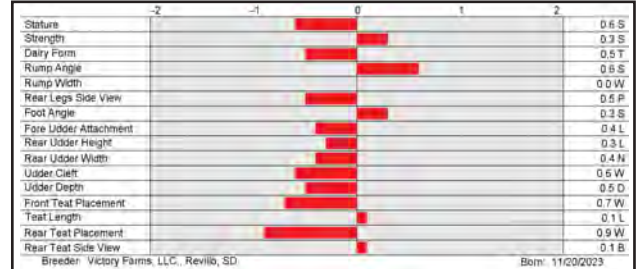


S: JX Primus Watkins CABAL {5}-ET
 D: JX Victory 58549 Isner 63247 {6}-P-ET (VG-84%)
 MGS: Tog Isner-P-ET
 MGD: JX Victory 52571 Jiggy 58549 {5} (VG-80%)
 MGGS: JX Kash-In Got Jiggy {6}-ET

CDCB-S Genomic Evaluation			(04/25)	
Milk	+45	74%R	Net Merit (72%R)	+\$397
Protein	+0.04%	+10	Cheese Merit	+\$415
Fat	+0.10%	+22	CFP	+32

CDCB-S/AJCA Genomic Evaluation			(04/25)	
Type	-0.3	78%R	+10.4JUI	GJPI +150

Health and Fertility		(04/25) CDCB/Zoetis Data						
SCS	2.71	73%R	PL	+5.5	71%R	LIV	+2.2	61%R
DPR	+2.1	69%R	HCR	+1.4	59%R	CCR	+2.2	68%R
DWP\$	+\$645		WT\$	+\$181		CW\$	+\$101	
M FVR	107	38%R	MAS	+1.3	57%R	ZMAS	113	41%R
HHP\$	+\$519							



SIMPLE MAN-P

7JE2312 KASH-IN SIMPLE MAN-P-ET
 8403221919883 BBR 100 JH1C JNS-TF 🍁
 DMS: 234,345 aAa: 234 B-Casein: A2A2 K-Casein: BB



S: Ahlem Dimitri SEISMIC-PP-ET
 D: Kash-In Chief 67297 (VG-80%)
 MGS: JX River Valley Chief {6}-ET
 MGD: Kash-In Jiggy 61910 (VG-88%)
 MGGS: JX Kash-In Got Jiggy {6}-ET

CDCB-S Genomic Evaluation			(04/25)	
Milk	+216	75%R	Net Merit (72%R)	+\$456
Protein	+0.06%	+20	Cheese Merit	+\$479
Fat	+0.20%	+49	CFP	+69

CDCB-S/AJCA Genomic Evaluation			(04/25)	
Type	+1.3	78%R	+23.9JUI	GJPI +155

Health and Fertility		(04/25) CDCB/Zoetis Data						
SCS	2.82	74%R	PL	+4.2	72%R	LIV	+0.0	63%R
DPR	-2.4	70%R	HCR	+0.4	64%R	CCR	-1.5	70%R
DWP\$	+\$668		WT\$	+\$174		CW\$	+\$7	
M FVR	104	34%R	MAS	+1.0	59%R	ZMAS	112	38%R
HHP\$	+\$479							



VINTAGE-P

7JE2223 DUPAT KESTREL VINTAGE-P-ET
 8403242639177 BBR 100 JH1F JNS-TF 🍁
 DMS: 234,345 aAa: 354 B-Casein: A2A2 K-Casein: BB



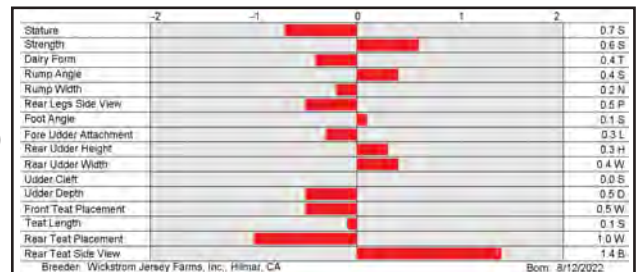
JX DUPAT THRASHER 22814 {6}-ET (VG-83%)

S: Primus Comanche KESTREL-P-ET
 D: JX Dupat Thrasher 22814 {6}-ET (VG-83%)
 MGS: JX Cdf Jls Pilgrim THRASHER {6}-ET
 MGD: JX Dupat Got Maid 18781 {5}-ET (VG-86%)
 MGGS: JX Sunset Canyon Got Maid {5}-ET

CDCB-S Genomic Evaluation			(04/25)	
Milk	+1,423	78%R	Net Merit (76%R)	+\$463
Protein	-0.09%	+36	Cheese Merit	+\$453
Fat	-0.18%	+35	CFP	+71

CDCB-S/AJCA Genomic Evaluation			(04/25)	
Type	+0.2	81%R	+12.5JUI	GJPI +150

Health and Fertility		(04/25) CDCB/Zoetis Data						
SCS	3.04	78%R	PL	+4.0	75%R	LIV	+1.8	65%R
DPR	-0.1	73%R	HCR	+0.8	66%R	CCR	-0.6	73%R
DWP\$	+\$549		WT\$	+\$62		CW\$	-\$10	
M FVR	102	43%R	MAS	+1.5	63%R	ZMAS	102	46%R
HHP\$	+\$520							



G F O R C E S I R E S

JX DENZEL {5}-P

14JE2286 JX KASH-IN DENZEL {5}-P-ET
 8403221919893 BBR 100 JH1F JNS-TF
 DMS: 234,246 aAa: 315 B-Casein: A2A2 K-Casein: AB

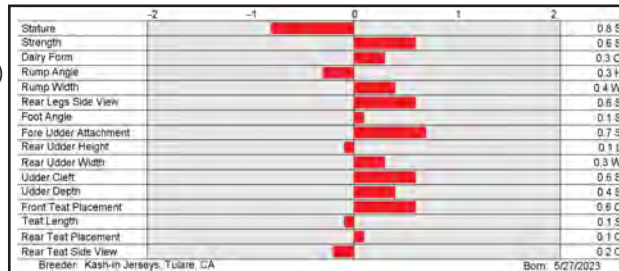


S: Four J MONSTER {6}-P-ET
 D: JX Pine-Tree 2401 Stony 2735 {4}-ET (VG-84%)
 MGS: JX Spring Creek Marlo STONEY {3}-ET
 MGD: Pine-Tree 874 Demos 2401-ET
 MGGS: All Lynns Demos-P-ET

CDCB-S Genomic Evaluation			(04/25)	
Milk	+20	78%R	Net Merit (75%R)	+\$356
Protein	+0.05%	+11	Cheese Merit	+\$375
Fat	+0.15%	+29	CFP	+40

CDCB-S/AJCA Genomic Evaluation			(04/25)	
Type +0.8	80%R		+15.1JUI	GJPI +137

Health and Fertility		(04/25) CDCB/Zoetis Data			
SCS	2.77 77%R	PL	+4.2 75%R	LIV	+1.5 66%R
DPR	+0.4 73%R	HCR	+2.4 68%R	CCR	+0.8 73%R
DWP\$	+\$351	WT\$	+\$78	CW\$	-\$67
M FVR	108 39%R	MAS	+0.6 60%R	ZMAS	106 40%R
HHP\$	+\$408				



TROON {5}-P

14JE2291 VICTORY MONSTER TROON {5}-P-ET
 8403274039428 BBR 100 JH1F JNS-TF
 DMS: 234,123 aAa: 351 B-Casein: A2A2 K-Casein: BB



JX VICTORY 47916 CHIEF 58632 {4} (VG-86%)

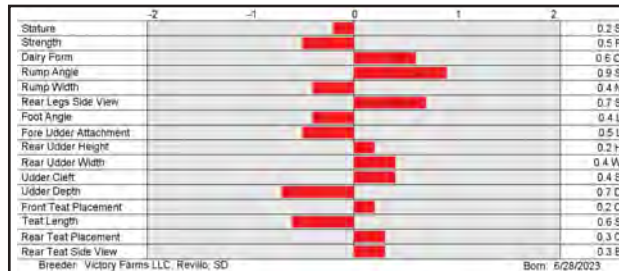


S: Four J MONSTER {6}-P-ET
 D: JX Victory 47916 Chief 58632 {4} (VG-86%)
 MGS: JX River Valley Chief {6}-ET
 MGD: JX Victory 41025 Conner 47916 {3}
 MGGS: JX Oomsdale Conner {4}-ET

CDCB-S Genomic Evaluation			(04/25)	
Milk	+945	78%R	Net Merit (75%R)	+\$455
Protein	-0.05%	+25	Cheese Merit	+\$456
Fat	-0.05%	+37	CFP	+62

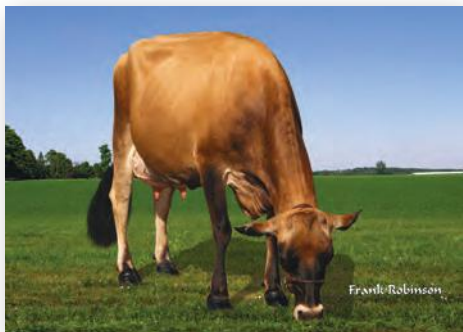
CDCB-S/AJCA Genomic Evaluation			(04/25)	
Type +0.3	79%R		+11.3JUI	GJPI +138

Health and Fertility		(04/25) CDCB/Zoetis Data			
SCS	2.73 78%R	PL	+3.7 74%R	LIV	+0.2 66%R
DPR	-0.6 73%R	HCR	+2.3 67%R	CCR	-0.6 73%R
DWP\$	+\$617	WT\$	+\$192	CW\$	-\$24
M FVR	98 44%R	MAS	-0.4 60%R	ZMAS	111 44%R
HHP\$	+\$404				



JX CAPER {5}-P

14JE2294 JX PRIMUS MONSTER CAPER {5}-P-ET
 8403203110569 BBR 100 JH1F JNS-TF
 DMS: 126,246 aAa: 324 B-Casein: A2A2 K-Casein: BB



JX PRIMUS ENZO CHARLIZE 668 {4}-ET (VG-80%)



S: Four J MONSTER {6}-P-ET
 D: JX Primus Enzo Charlize 668 {4}-ET (VG-80%)
 MGS: JX Clover Patch Avon Enzo {3}
 MGD: River Valley Lemonhead Carnival-ET
 MGGS: Steinhauers Samson LEMONHEAD

CDCB-S Genomic Evaluation			(04/25)	
Milk	+710	80%R	Net Merit (77%R)	+\$409
Protein	-0.04%	+18	Cheese Merit	+\$408
Fat	+0.01%	+38	CFP	+56

CDCB-S/AJCA Genomic Evaluation			(04/25)	
Type +0.6	81%R		+17.1JUI	GJPI +148

Health and Fertility		(04/25) CDCB/Zoetis Data			
SCS	2.84 80%R	PL	+3.2 77%R	LIV	+0.9 67%R
DPR	+0.9 75%R	HCR	+1.1 71%R	CCR	+1.8 75%R
DWP\$	+\$548	WT\$	+\$127	CW\$	+\$12
M FVR	90 47%R	MAS	-1.2 62%R	ZMAS	107 47%R
HHP\$	+\$421				



JX CUJO {6}-PP

7JE2278 JX PRIMUS MONSTER CUJO (6)-PP-ET
8403258615516 BBR 100 JH1F JNS-TF
DMS: 123,135 aAa: 312 B-Casein: A2A2 K-Casein: BB



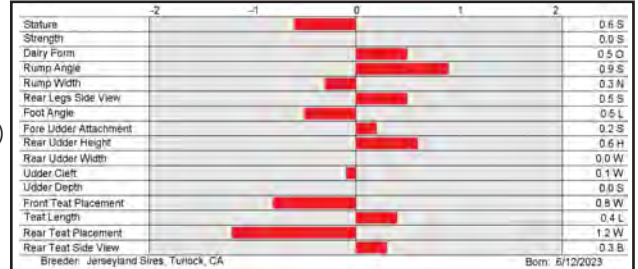
JX PRIMUS FOURNETTE CERYS 560 (4)-ET (VG-84%)

S: Four J MONSTER (6)-P-ET
D: JX Primus Goals Cirilla 49015 (5)-P-ET
MGS: JX Jer-Z-Boyz SSI GOALS (5)-P-ET
MGD: JX Primus Fournette Cerys 560 (4)-ET (VG-84%)
MGGS: JX Faria Brothers FOURNETTE (3)-ET

CDCB-S Genomic Evaluation			(04/25)	
Milk	+312	77%R	Net Merit (75%R)	+\$381
Protein	+0.03%	+17	Cheese Merit	+\$395
Fat	+0.04%	+24	CFP	+41

CDCB-S/AJCA Genomic Evaluation			(04/25)	
Type +0.5	80%R		+14.6JUI	GJPI +132

Health and Fertility		(04/25)		CDCB/Zoetis Data	
SCS	2.82 78%R	PL	+4.2 74%R	LIV	+1.2 65%R
DPR	+0.5 73%R	HCR	+1.0 68%R	CCR	+0.9 73%R
DWP\$	+\$592	WT\$	+\$152	CW\$	+\$95
M FVR	95 43%R	MAS	-0.8 60%R	ZMAS	107 44%R
HHP\$	+\$384				



FULCRUM-P

7JE2284 KASH-IN FULCRUM-P-ET
8403221919896 BBR 100 JH1C JNS-TF
DMS: 234,123 aAa: 354 B-Casein: A2A2 K-Casein: BB

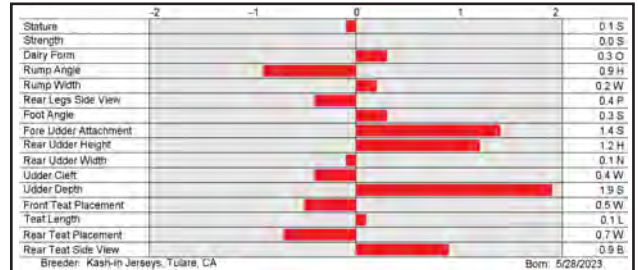


S: Ahlem Dimitri SEISMIC-PP-ET
D: Kash-In Caliban 64700-ET
MGS: Primus Viceroy CALIBAN-ET
MGD: Kash-In Jiggy 59612-ET (VG-84%)
MGGS: JX Kash-In Got Jiggy (6)-ET

CDCB-S Genomic Evaluation			(04/25)	
Milk	+145	76%R	Net Merit (73%R)	+\$393
Protein	+0.05%	+15	Cheese Merit	+\$412
Fat	+0.15%	+37	CFP	+52

CDCB-S/AJCA Genomic Evaluation			(04/25)	
Type +0.9	79%R		+21.6JUI	GJPI +135

Health and Fertility		(04/25)		CDCB/Zoetis Data	
SCS	2.82 75%R	PL	+4.1 73%R	LIV	+0.6 63%R
DPR	-1.5 70%R	HCR	+1.1 64%R	CCR	-1.0 71%R
DWP\$	+\$634	WT\$	+\$164	CW\$	+\$78
M FVR	93 39%R	MAS	-0.5 60%R	ZMAS	109 43%R
HHP\$	+\$368				



JX WOODS {6}-P

7JE2238 JX S-S-I VICTORY CHEKHOV WOODS (6)-P-ET
8403257225424 BBR 100 JH1F JNS-TF
DMS: 456,345 aAa: 453 B-Casein: A2A2 K-Casein: BB



S: JX Primus Dimitri CHEKHOV (5)-P-ET
D: JX S-S-I Victory Tucker 61982 (6)-ET (VG-85%)
MGS: Rowleys 1996 Daniel TUCKER (6)-ET
MGD: JX Rowleys 1942 Jiggy 2435 (5)
MGGS: JX Kash-In Got Jiggy (6)-ET

CDCB-S Genomic Evaluation			(04/25)	
Milk	+401	75%R	Net Merit (73%R)	+\$430
Protein	+0.04%	+22	Cheese Merit	+\$447
Fat	+0.07%	+34	CFP	+56

CDCB-S/AJCA Genomic Evaluation			(04/25)	
Type +1.0	78%R		+16.1JUI	GJPI +130

Health and Fertility		(04/25)		CDCB/Zoetis Data	
SCS	2.87 75%R	PL	+4.4 73%R	LIV	+0.8 63%R
DPR	-2.0 70%R	HCR	+0.8 64%R	CCR	-1.2 71%R
DWP\$	+\$590	WT\$	+\$153	CW\$	+\$12
M FVR	87 42%R	MAS	-0.3 60%R	ZMAS	108 43%R
HHP\$	+\$364				



DWAYNE-PP

14JE2317 S-S-I VICTORY HAPPY DWAYNE-PP-ET
 8403281513224 BBR 100 JH1F JNS-TF 🍁
 DMS: 561,126 aAa: 534 B-Casein: A2A2 K-Casein: BB

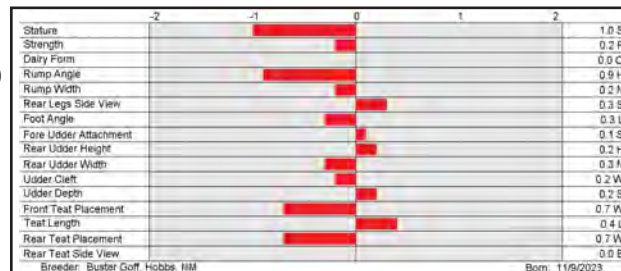


S: JX Victory S-S-I Goals HAPPY {6}-P-ET
 D: JX Cal-Mart S-S-I Skalski 63615 {6}-P-ET (VG-80%)
 MGS: JX S-S-I Victory L SKALSKI {5}-P-ET
 MGD: Cal-Mart Hjort Jan 9699 (VG-84%)
 MGGS: Isdk Vj Hjortvangs Holmer Hjort

CDCB-S Genomic Evaluation			(04/25)	
Milk	+121	74%R	Net Merit (72%R)	+\$375
Protein	+0.05%	+14	Cheese Merit	+\$393
Fat	+0.11%	+27	CFP	+41

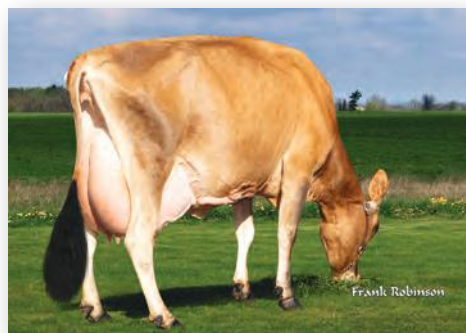
CDCB-S/AJCA Genomic Evaluation			(04/25)	
Type +0.1	78%R		+14.1JUI	GJPI +130

Health and Fertility		(04/25)		CDCB/Zoetis Data	
SCS	2.81	74%R	PL	+3.5	72%R
DPR	+1.4	69%R	HCR	+1.2	61%R
DWP\$	+\$346		WT\$	-\$61	
M FVR	98	37%R	MAS	-1.3	57%R
HHP\$	+\$376		LIV	+1.4	61%R
			CCR	+1.2	69%R
			CW\$	+\$39	
			ZMAS	94	39%R



JX GUETTA {6}-P

14JE2103 JX DUPAT SSI GUETTA {6}-P-ET
 8403209722034 BBR 100 JH1F JNS-TF 🍁
 DMS: 234,345 aAa: 435 B-Casein: A2A2 K-Casein: BB



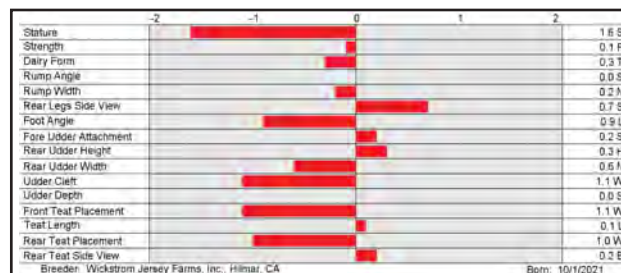
JX DUPAT VICEROY 18919 (5) (VG-85%)

S: JX Jer-Z-Boyz SSI GOALS (5)-P-ET
 D: JX Dupat Viceroy 18919 (5) (VG-85%)
 MGS: Cdf Viceroy-ET
 MGD: JX Dupat Leonel 15231 {4} (E-91%)
 MGGS: JX Faria Brothers LEONEL (3)-ET

CDCB-S Genomic Evaluation			(04/25)	
Milk	+320	79%R	Net Merit (77%R)	+\$283
Protein	+0.03%	+17	Cheese Merit	+\$296
Fat	-0.07%	+3	CFP	+20

CDCB-S/AJCA Genomic Evaluation			(04/25)	
Type -0.1	81%R		+12.7JUI	GJPI +108

Health and Fertility		(04/25)		CDCB/Zoetis Data	
SCS	2.85	79%R	PL	+3.9	76%R
DPR	+0.9	74%R	HCR	+2.4	66%R
DWP\$	+\$426		WT\$	+\$143	
M FVR	94	42%R	MAS	-2.2	62%R
HHP\$	+\$249		LIV	+1.9	64%R
			CCR	+1.3	74%R
			CW\$	+\$20	
			ZMAS	108	43%R



SEISMIC-PP

14JE2083 AHLEM DIMITRI SEISMIC-PP-ET
 8403213754079 BBR 100 JH1C JNSC 🍁
 DMS: 345,234 aAa: 435 B-Casein: A2A2 K-Casein: AB



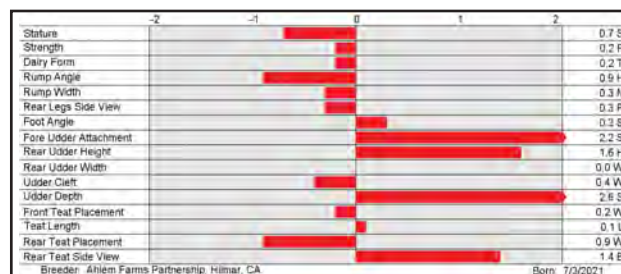
AHLEM SKYLER SKITTLES 56480-P (VG-82%)

S: Avi-Lanche Kiawa DIMITRI-P-ET
 D: Ahlem Skyler Skittles 56480-P (VG-82%)
 MGS: Progenesis Skyler ET
 MGD: Ahlem Listowel Skittles 52452-P (E-90%)
 MGGS: Hillview Listowel-P

CDCB-S Genomic Evaluation			(04/25)	
Milk	-203	79%R	Net Merit (77%R)	+\$297
Protein	+0.05%	+2	Cheese Merit	+\$311
Fat	+0.21%	+30	CFP	+32

CDCB-S/AJCA Genomic Evaluation			(04/25)	
Type +0.7	80%R		+21.6JUI	GJPI +112

Health and Fertility		(04/25)		CDCB/Zoetis Data	
SCS	2.87	77%R	PL	+2.7	75%R
DPR	-1.2	74%R	HCR	+0.6	78%R
DWP\$	+\$579		WT\$	+\$190	
M FVR	99	46%R	MAS	+1.9	63%R
HHP\$	+\$323		SCR	-0.8	70%R
			LIV	+0.7	65%R
			CCR	-1.0	75%R
			CW\$	+\$109	
			ZMAS	112	49%R



WAVE-PP

7JE2271 S-S-I VICTORY SEISMIC WAVE-PP-ET
8403274039384 BBR 100 JH1C JNS-TF
DMS: 123,126 aAa: 324 B-Casein: A2A2 K-Casein: BB



JX FARIA BROTHERS STEVENS 382131 (4)-ET (VG-83%)

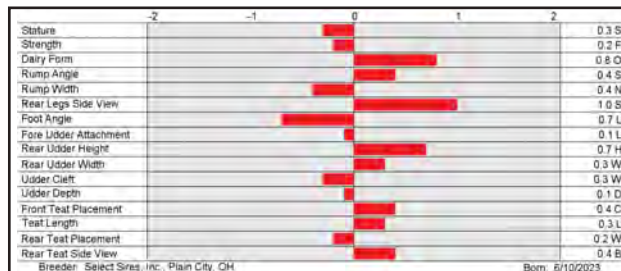


S: Ahlem Dimitri SEISMIC-PP-ET
D: JX S-S-I Victory Goals 62213 (6)-P-ET (VG-84%)
MGS: JX Jer-Z-Boyz SSI GOALS (5)-P-ET
MGD: JX S-S-I Tog Butkus 382131 Y423 (5)-ET
MGGS: JX Faria Brothers BUTKUS (4)-ET

CDCB-S Genomic Evaluation			(04/25)	
Milk	+109	74%R	Net Merit (72%R)	+\$412
Protein	+0.06%	+16	Cheese Merit	+\$432
Fat	+0.15%	+35	CFP	+51

CDCB-S/AJCA Genomic Evaluation			(04/25)	
Type +0.3	78%R		+14.6JUI	GJPI +136

Health and Fertility			(04/25)			CDCB/Zoetis Data		
SCS	2.88	74%R	PL	+3.8	72%R	LIV	+0.4	61%R
DPR	+0.1	69%R	HCR	+1.7	63%R	CCR	+1.2	70%R
DWP\$	+\$554		WT\$	+\$83		CW\$	+\$45	
M FVR	86	36%R	MAS	-0.2	57%R	ZMAS	105	39%R
HHP\$	+\$394							



MOON-PP

7JE2296 PINE-TREE 16492 MOON-PP-ET
USA76381115 BBR 100 JH1F JNS-TF
DMS: 561,126 aAa: 345 B-Casein: A2A2 K-Casein: BB

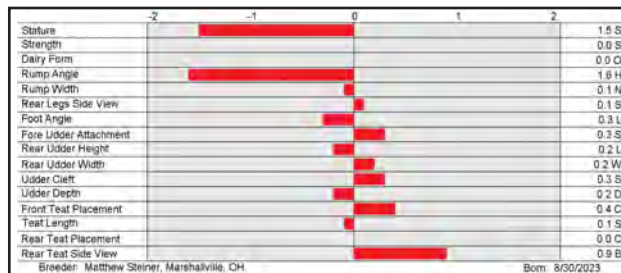


S: Four J MONSTER (6)-P-ET
D: Elm-J Listowel Carolee 16492-P-ET (E-90%)
MGS: Hillview Listowel-P
MGD: Dgm Chrome Carolina (E-91%)
MGGS: River Valley Cece CHROME-ET

CDCB-S Genomic Evaluation			(04/25)	
Milk	+316	78%R	Net Merit (76%R)	+\$247
Protein	+0.01%	+14	Cheese Merit	+\$257
Fat	-0.01%	+14	CFP	+28

CDCB-S/AJCA Genomic Evaluation			(04/25)	
Type +0.3	80%R		+12.8JUI	GJPI +111

Health and Fertility			(04/25)			CDCB/Zoetis Data		
SCS	2.81	78%R	PL	+2.6	75%R	LIV	-0.7	66%R
DPR	+0.0	73%R	HCR	+2.5	68%R	CCR	+1.1	73%R
DWP\$	+\$264		WT\$	+\$74		CW\$	-\$37	
M FVR	104	37%R	MAS	+0.3	61%R	ZMAS	108	38%R
HHP\$	+\$271							



JX RAYQUAZA {6}-P

7JE2328 JX MM CHEKHOV RAYQUAZA {6}-P-ET
8403272841251 BBR 100 JH1F JNS-TF
DMS: 345,234 aAa: 453 B-Casein: A1A2 K-Casein: BB

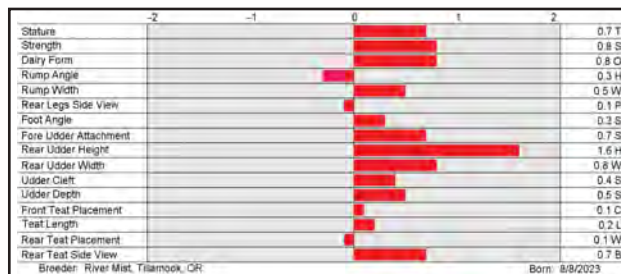


S: JX Primus Dimitri CHEKHOV (5)-P-ET
D: JX Mm Gallantry River 17009 (5)-ET
MGS: JX Sexing Gallantry (4)-ET
MGD: JX Rm Viceroy River 11965 (4) (VG-85%)
MGGS: Cdf Viceroy-ET

CDCB-S Genomic Evaluation			(04/25)	
Milk	+499	75%R	Net Merit (73%R)	+\$277
Protein	+0.03%	+24	Cheese Merit	+\$288
Fat	+0.09%	+42	CFP	+66

CDCB-S/AJCA Genomic Evaluation			(04/25)	
Type +1.0	78%R		+19.3JUI	GJPI +108

Health and Fertility			(04/25)			CDCB/Zoetis Data		
SCS	3.07	75%R	PL	+1.4	72%R	LIV	-0.6	62%R
DPR	-1.6	70%R	HCR	+2.8	64%R	CCR	-1.3	70%R
DWP\$	+\$493		WT\$	+\$118		CW\$	-\$17	
M FVR	94	41%R	MAS	-2.1	59%R	ZMAS	106	43%R
HHP\$	+\$211							



A SIMPLIFIED APPROACH TO EFFICIENCY

Select Sires' XD program offers the best of Holstein and Jersey genetics in a simplified approach to producing high efficiency cows for your milking string. You can expect efficient component production while keeping body size in check. Ask your Select Sires representative about the XD lineup of sires today!



SIMPLE



EFFICIENT



SUSTAINABLE

PROVEN SIRE

SIRE	PEDIGREE	HHP\$	URPI	NM\$	NM\$ Rel.	CM\$	PTAM	Fat	% Fat	Protein	% Protein	Yield Rel.	SCS	CDGB Mast	PL	DPR	LIV	HCR	CCR	A2A2
7XD5 TIGERWOODS	MILTON x SUPERSIRE	728	176	432	94%	423	2,301	82	-0.15	63	-0.11	99%	3.01	-1.2	-0.9	-1.8	-1.2	-2.8	-0.4	✓

YOUNG SIRES

SIRE	PEDIGREE	HHP\$	URPI	NM\$	NM\$ Rel.	CM\$	PTAM	Fat	% Fat	Protein	% Protein	Yield Rel.	SCS	CDGB Mast	PL	DPR	LIV	HCR	CCR	A2A2
9XD16 UR BACOT {0}	JX STONEY {3} x Entity	927	217	558	51%	564	1,464	80	0.03	46	-0.04	53%	2.84	1.3	2.6	1.0	1.9	-0.6	0.5	✓
9XD17 UR RJ DAVIS {0}	JX STONEY {3} x Entity	884	210	524	51%	540	1,098	73	0.09	42	0.00	52%	2.87	0.2	2.4	2.1	3.0	-0.1	1.8	✓
9XD34 UR NEUTRAL {0}	MADURO x NICKLAUS	833	198	470	42%	479	1,283	65	0.00	41	-0.04	44%	2.74	-0.5	2.3	2.6	2.9	-0.6	2.9	✓
9XD25 UR CARBON {0}	NICKLAUS x BIGSHOT	801	196	488	50%	496	1,315	66	0.00	42	-0.04	52%	2.78	-0.8	2.5	1.5	1.4	-1.1	1.0	✓
9XD26 UR NEGRON {0}	BURGOON x Popcorn-PP	866	195	511	42%	519	1,250	48	-0.07	40	-0.03	44%	2.78	1.5	2.0	3.7	1.7	0.6	3.3	✓
9XD35 UR SUSTAIN {0}	MADURO x NICKLAUS	828	193	475	42%	491	1,187	68	0.04	45	0.00	44%	2.88	0.7	1.7	1.8	2.2	-0.7	2.0	✓
9XD27 UR DAQUIRI {0}	BURGOON x RENFROW	827	187	535	43%	554	918	56	0.05	38	0.02	46%	2.79	1.4	1.4	2.6	1.4	1.9	3.0	✓
9XD23 UR BROGDON {0}	JX STONEY {3} x Entity	787	185	440	51%	442	1,193	73	0.07	36	-0.04	52%	2.92	1.5	0.7	0.7	2.0	-0.5	0.4	✓
9XD24 UR MANEK {0}	JX STONEY {3} x Aristocrat	777	184	435	52%	443	1,144	64	0.03	37	-0.03	54%	2.83	0.9	1.3	1.4	1.6	0.4	1.1	✓
9XD22 UR HAUSER {0}	JX STONEY {3} x Entity	773	183	437	53%	438	1,413	65	-0.03	41	-0.06	54%	2.87	0.6	1.1	0.9	2.1	0.1	0.9	✓
9XD28 UR EMISSIONS {0}	FELIX x JX Jiggy {6}	743	181	535	43%	538	1,467	54	-0.09	44	-0.05	46%	2.83	-0.2	1.7	1.6	3.1	0.0	1.9	✓
9XD21 UR PRITCHARD {0}	JX STONEY {3} x Perk	742	179	396	53%	410	934	65	0.09	36	0.00	56%	2.84	1.0	1.4	0.6	1.6	0.3	0.2	✓
9XD31 UR MAITAI {0}-P	CHEW-P x Popcorn-PP	720	173	470	43%	470	1,359	41	-0.13	40	-0.05	46%	2.92	0.3	2.0	3.5	1.7	0.9	3.3	✓
9XD37 UR COOL S {0}	JX GUETTA {6}-P x GAMEDAY	683	169	526	42%	518	1,546	56	-0.10	37	-0.10	44%	2.74	-0.3	1.4	0.8	1.1	-0.4	0.7	✓
9XD29 UR MARGARITA {0}	URI x Wheelhouse	670	168	490	41%	486	1,279	48	-0.08	34	-0.07	42%	2.92	-0.4	1.5	2.5	2.3	1.4	2.4	✓
9XD32 UR ZOMBIE {0}-P	AMEN-PP x Popcorn-PP	691	167	473	42%	479	1,176	46	-0.06	37	-0.04	44%	2.81	0.2	1.7	2.7	2.5	-0.1	2.5	✓
7XD14 UR JOE {0}-PP	Joppolo-PP x Listowel-P	524	138	401	54%	399	852	44	0.01	21	-0.06	56%	2.81	0.7	1.0	1.6	1.4	-0.3	1.4	✓
7XD11 UR RICO	Bancroft x MILTON	483	133	340	66%	335	942	36	-0.06	24	-0.06	69%	2.95	0.9	1.2	0.8	0.0	-1.9	0.4	✓

Offspring from XD sires are not eligible for registry in Canada.

HAPLOTYPES IMPACTING FERTILITY

With our growing knowledge about the bovine genome, experts have predicted for some time that we'd likely discover numerous cattle genetic defects. Human genetic researchers estimate that we each carry four or five genetic defects. It's reasonable to expect that these exist at a similar level in cattle.

USDA researchers along with international collaborators have identified haplotypes that appear to cause embryo loss or stillbirths when these haplotypes exist in the homozygous state.

These genetic conditions have not been directly observed and we do not know the exact genetic or biological cause of why the embryos or fetuses are not viable. Because of this, they've been given simple names of Jersey Haplotype 1 (JH1), Brown Swiss Haplotype 1 (BH1), Brown Swiss Haplotype 2 (BH2), Ayrshire Haplotype 1 (AH1) and Ayrshire Haplotype 2 (AH2). These haplotypes appear to have a recessive mode of inheritance where animals with zero or one copy of the haplotype are completely normal. Those that inherit two copies of the haplotype are lost as embryos or are stillborn.

The impacts of these haplotypes vary and are dependent on their frequency in the population and at what stage of gestation the pregnancies are lost. JH1 has a frequency of 18.4%. BH2 exists at a frequency of 13.3%. Two haplotypes have been discovered in the Ayrshire breed (AH1) and it exists at the highest frequency of 22.2%, AH2 exists at a frequency of 21.0%.

It's important to realize that the negative impact of these haplotypes is already accounted for in the routinely published sire conception rate (SCR) evaluations and daughter pregnancy rate (DPR) genomic evaluations. So, if you are using these traits in selecting your A.I. sires, you're already avoiding or compensating for these genetic conditions.

The haplotypes each represent a distinct and unique genetic condition. They are not related to each other. The haplotypes have no impact when a bull that is heterozygous for AH1 is mated to a cow that is heterozygous for AH2. The risk is only experienced when animals are heterozygous for the same haplotype.

Select Mating Service® (SMS®) is an excellent tool for managing these genetic conditions. By using the SMS program, herds with at least one generation of pedigree information on their cows can use heterozygous bulls with less than 1% chance of lost pregnancies from known conditions.

JERSEY

7JE2271 WAVE-PP	JH1C	7JE2312 SIMPLE MAN-P	JH1C
7JE2283 JX CURVE {6}-PP	JH1C	14JE2002 VOLANT	JH1C
7JE2284 FULCRUM-P	JH1C	14JE2083 SEISMIC-PP	JH1C

AYRSHIRE

9AY129 JAMAICA	AH2C
----------------	------

JERSEY NEUROPATHY WITH SPLAYED FORELIMBS (JNS)

The American Jersey Cattle Association (AJCA) recently shared news of a new undesirable trait known as Jersey Neuropathy with Splayed Forelimbs or JNS. Select Sires is working closely with the AJCA and researchers from USDA-AGIL to learn about this new undesirable trait. As your cooperative, we will continue to support you and provide you with the most up-to-date information.

Genetic research and genomic testing are more prevalent than ever before. As technology advances and we test more cattle, we will continue to make these types of genetic discoveries. While it is likely that many sires will carry this undesirable trait, we have the available genetic information and breeding strategies to avoid its impact.

By using genetic test results, pedigree information and guidance from your Select Mating Service® (SMS®) genetic consultant, you can avoid carrier-to-carrier matings and successfully manage undesirable traits. This breeding strategy avoids economic loss while continuing to utilize the industry's best genetics.

The list below contains sires from the Select Sires and Accelerated Genetics lineups that are carriers for JNS.

7JE2181	JX UPCYCLE {6}-P
14JE2083	SEISMIC-PP
614JE2353	JX WYNDHAM {5}

Sires are part of the Select Sires and Accelerated Genetics active lineups. List as of 04/01/2025.



The genetic evaluations contained within this report, unless otherwise noted, are provided by the Council on Dairy Cattle Breeding as the steward of the National Cooperator Database. The National Cooperator Database houses producer-owned yield, management, ancestry, type, and genotype data for the use in genetic evaluations and independent research. Data included in the National Cooperator Database is submitted through certified organizations for

data quality and integrity. As such, individual traits - along with Lifetime Net Merit \$, Cheese Merit \$, Fluid Merit \$, and Grazing Merit \$ - are Powered by CDCB, unless otherwise noted such as Holstein type traits. For more information about evaluations Powered by CDCB and the industry collaboration that fuels them, visit <https://uscddb.com/cdcb-marks/>.

PROVEN AND SHOWCASE SIRE

TANK

9BS924 COZY NOOK DOBOY TANK
 USA68204129 WT MT DT BH2T BH14T
 B-Casein: A2A2 K-Casein: BB
 Dobby x Payssli x Pronto



LA RAINBOW SWEET SAPHIRE ETV "VG88"
 Stephanie Pope, Bridport, VT



LA RAINBOW SWEET CHEERFUL ETV
 Velvet-View Farms and Kiss Swiss, Big Prairie, OH



CDCB-S Genomic Evaluation		(04/25)	95 Dtrs/66 Herds	RIP 81%
Milk	+659	90%R	Net Merit (80%R)	+\$310
Protein	+0.00%	+22	Cheese Merit	+\$314
Fat	+0.04%	+36	CFP	+58

CDCB-S/BSCBA Genomic Evaluation		(04/25)	28 Dtrs/21 Herds
Type +0.9	83%R	+0.94UDC	+0.2Mobility
		GPPR +85	

Health and Fertility		(04/25)
SCS	2.95	80%R
DPR	-1.2	66%R
MKS	109	80%R
MAS	+1.3	39%R
PL	+1.0	70%R
HCR	+2.0	64%R
SCE	2.5%	91%R
SCR	+4.0	85%R
LIV	-1.2	58%R
CCR	+0.8	63%R
DCE	2.6%	75%R



DETERMINATION

9BS952 EDGE VIEW C DETERMINATION ETV
 USA68227940 WT MT DT BH2T BH14T
 B-Casein: A1A1 K-Casein: BB



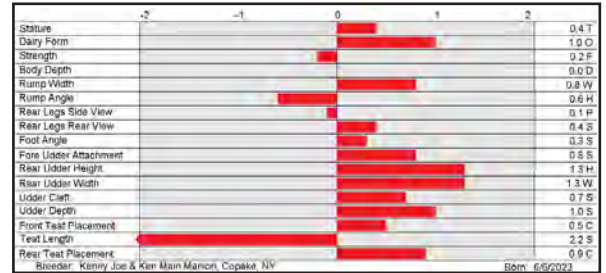
CUTTING EDGE T DELILAH "2E95 2E95MS"

S: Collaps
 D: Cutting Edge T Delilah "2E95 2E95MS"
 MGS: Cutting Edge THUNDER*TM
 MGD: Towpath Agenda Dancer "2E92 2E93MS"
 MGGS: Blessing Banker AGENDA ET *TM

CDCB-S Genomic Evaluation		(04/25)
Milk	+91	65%R
Protein	-0.03%	-3
Fat	-0.04%	-5
Net Merit (60%R)	+\$69	
Cheese Merit	+\$58	
CFP	-8	

CDCB-S/BSCBA Genomic Evaluation		(04/25)
Type +0.5	67%R	+1.05UDC
		+0.5Mobility
		GPPR +16

Health and Fertility		(04/25)
SCS	3.14	62%R
DPR	+1.1	55%R
MKS	102	59%
MAS	+0.0	28%R
PL	+1.8	58%R
HCR	-0.5	47%R
SCE	3.0%	42%R
LIV	+1.7	46%R
CCR	+0.2	51%R
DCE	3.3%	35%R



WALDORF

9BS954 APEX C WALDORF ETV
 8403271198274 BH2T BH14T
 B-Casein: A1A2 K-Casein: BB



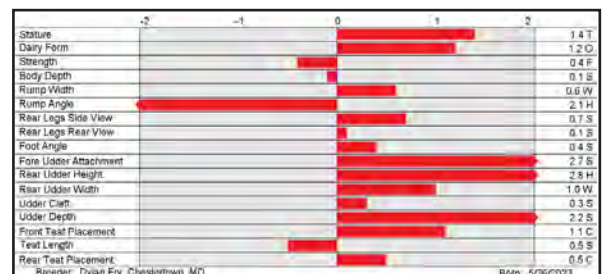
HILLTOP ACRES DB WHISPER-ETV "E91 E91MS" CERT

S: Collaps
 D: Hilltop Acres Db Whisper ETV "E91 E91MS" CERT
 MGS: Switzer Tals Drdvl Dobby ET
 MGD: Top Acres Durham Wintu ET "VG87 VG87MS"
 MGGS: Hilltop Acres W DURHAM ET *TM

CDCB-S Genomic Evaluation		(04/25)
Milk	+107	63%R
Protein	+0.01%	+6
Fat	-0.02%	+0
Net Merit (59%R)	+\$166	
Cheese Merit	+\$170	
CFP	+6	

CDCB-S/BSCBA Genomic Evaluation		(04/25)
Type +0.9	66%R	+1.73UDC
		+0.6Mobility
		GPPR +48

Health and Fertility		(04/25)
SCS	2.98	61%R
DPR	+0.4	55%R
MKS	104	58%
MAS	+0.1	30%R
PL	+3.0	58%R
HCR	+1.3	47%R
SCE	3.3%	43%R
LIV	+0.5	47%R
CCR	-1.0	51%R
DCE	3.7%	35%R



G F O R C E S I R E S

9BS942 MEADO-BROOK TANK SAIGON-ET P 8403239005588

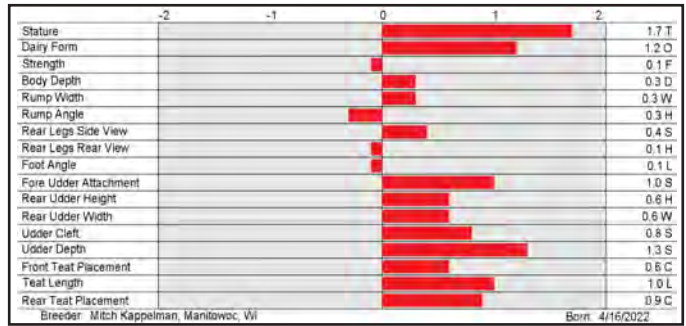
Tank x Jay P x Cartel

WT MT DT BH2T BH14T B-Casein: A2A2 K-Casein: BB

CDCB-S Genomic Evaluation		(04/25)	
Milk	+270 68%R	Net Merit (63%R)	+\$386
Protein	+0.07% +24	Cheese Merit	+\$410
Fat	+0.15% +43	CFP	+67

CDCB-S/BSCBA Genomic Evaluation		(04/25)	
Type +0.3	69%R	+0.87UDC	+0.1Mobility
		GPPR +105	

Health and Fertility		(04/25)	
SCS	2.93 64%R	PL	+1.5 59%R
DPR	+0.7 56%R	HCR	+0.8 49%R
MKS	100 62%R	SCE	3.0% 66%R
MAS	+0.7 30%R	LIV	-0.2 47%R
		CCR	+0.5 52%R
		DCE	3.1% 58%R



9BS953 HILLTOP ACRES P NETFLIX ETV 8403264521221

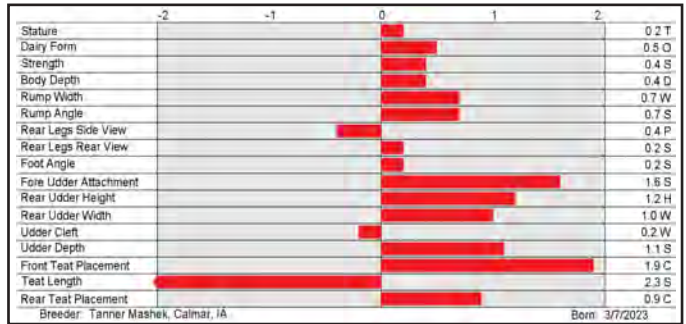
Perfection x Silver x Patton

WT MT DT BH2T BH14T B-Casein: A2A2 K-Casein: BB

CDCB-S Genomic Evaluation		(04/25)	
Milk	+674 65%R	Net Merit (60%R)	+\$497
Protein	+0.12% +48	Cheese Merit	+\$540
Fat	+0.10% +49	CFP	+97

CDCB-S/BSCBA Genomic Evaluation		(04/25)	
Type +0.8	68%R	+0.99UDC	+0.4Mobility
		GPPR +149	

Health and Fertility		(04/25)	
SCS	2.81 62%R	PL	+1.8 57%R
DPR	-0.5 54%R	HCR	+0.3 47%R
MKS	101 61%R	SCE	2.4% 44%R
MAS	+0.6 28%R	LIV	+0.3 45%R
		CCR	+1.3 50%R
		DCE	2.4% 36%R



9BS951 KULP-GEN PACTOLE CRUZAN ET 8403250042681

Pactole x Fact x Brookings

WT MT DT BH2T BH14T B-Casein: A2A2 K-Casein: BB

CDCB-S Genomic Evaluation		(04/25)	
Milk	+787 66%R	Net Merit (60%R)	+\$399
Protein	+0.06% +39	Cheese Merit	+\$427
Fat	+0.07% +47	CFP	+86

CDCB-S/BSCBA Genomic Evaluation		(04/25)	
Type +0.3	67%R	-0.19UDC	+0.4Mobility
		GPPR +127	

Health and Fertility		(04/25)	
SCS	2.71 61%R	PL	+2.2 56%R
DPR	+1.7 54%R	HCR	-0.3 48%R
MKS	107 60%R	SCE	3.3% 43%R
MAS	+0.3 32%R	LIV	+0.0 40%R
		CCR	+1.8 50%R
		DCE	3.1% 41%R



9BS943 SWITZER TALS JNMR DUBAI 8403214903781

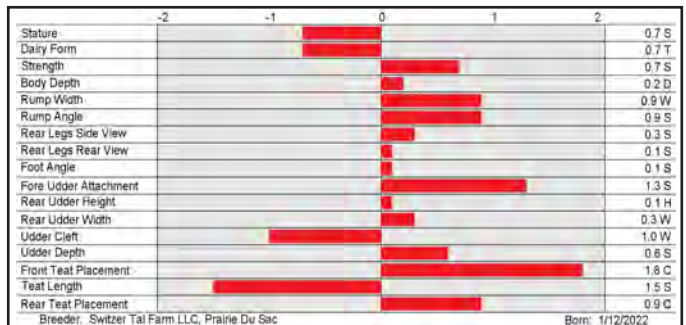
Jonmar x Thunder x Cadence

WT MT DT BH2T BH14T B-Casein: A1A2 K-Casein: AB

CDCB-S Genomic Evaluation		(04/25)	
Milk	+762 68%R	Net Merit (63%R)	+\$404
Protein	-0.02% +23	Cheese Merit	+\$406
Fat	+0.02% +37	CFP	+60

CDCB-S/BSCBA Genomic Evaluation		(04/25)	
Type +0.3	69%R	+0.29UDC	+0.1Mobility
		GPPR +108	

Health and Fertility		(04/25)	
SCS	2.94 64%R	PL	+4.0 59%R
DPR	+2.6 56%R	HCR	+1.4 50%R
MKS	94 63%R	SCE	2.1% 67%R
MAS	+2.0 33%R	LIV	+1.7 45%R
		CCR	+1.9 53%R
		DCE	2.4% 58%R



9BS942 SAIGON P



MEADO-BROOK SARAS SNAP ET-P "VG85 VG86MS"
Dam of SAIGON P

9BS953 NETFLIX



HILLTOP ACRES S NUTELLA "E91 E92MS"
Dam of NETFLIX

9BS951 CRUZAN



VOELKERS BROOK CARA "3E92 3E90MS" CERT
Grandam of CRUZAN

9BS943 DUBAI



SWITZER TALS CDNCE DONAY ET "VG86 VG86MS" CERT
Grandam of DUBAI

G F O R C E S I R E S

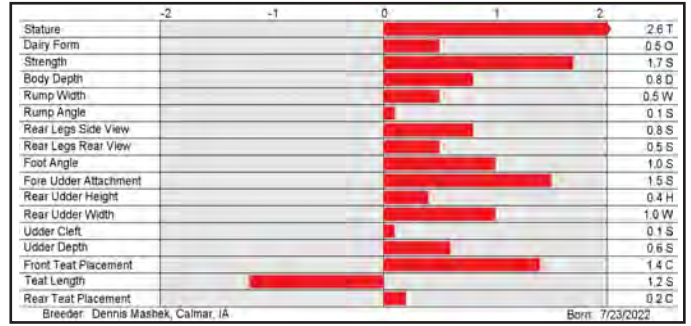
9BS945 HILLTOP ACRES PLAYTIME ETV 8403254278464

Pactole x Kickstart x Cadence



WT MT DT BH2T BH14T B-Casein: A1A2 K-Casein: BB

CDCB-S Genomic Evaluation		(04/25)	
Milk	+342 66%R	Net Merit (60%R)	+\$323
Protein	+0.14% +41	Cheese Merit	+\$372
Fat	+0.13% +41	CFP	+82



CDCB-S/BSCBA Genomic Evaluation		(04/25)	
Type	+0.7 67%R	+0.75UDC	+0.4Mobility
GPPR +134			

Health and Fertility		(04/25)	
SCS	2.70 61%R	PL	+1.4 56%R
LIV	+0.6 40%R		
DPR	+0.7 53%R	HCR	+1.4 47%R
CCR	+1.3 49%R		
MKS	102 60%R	SCE	2.4% 59%R
DCE	3.3% 57%R		
MAS	-0.7 29%R		

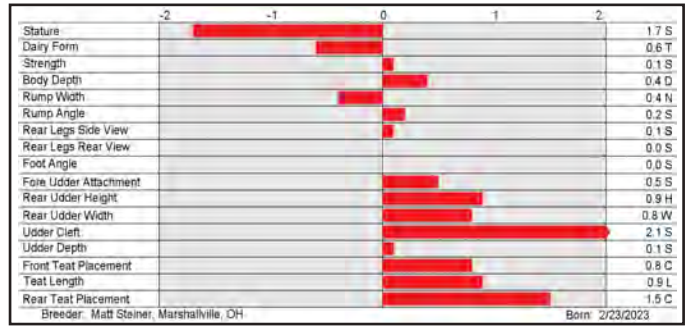
9BS950 PINE-TREE 9196 JAXSON ETV P 8403250267284

Jordy *P x Elmstar x Archer



WT MT DT BH2T BH14T B-Casein: A2A2 K-Casein: AB

CDCB-S Genomic Evaluation		(04/25)	
Milk	+101 66%R	Net Merit (60%R)	+\$413
Protein	+0.08% +19	Cheese Merit	+\$439
Fat	+0.12% +29	CFP	+48



CDCB-S/BSCBA Genomic Evaluation		(04/25)	
Type	+0.2 66%R	+1.09UDC	-0.1Mobility
GPPR +110			

Health and Fertility		(04/25)	
SCS	2.80 62%R	PL	+3.7 56%R
LIV	+1.8 40%R		
DPR	+3.4 55%R	HCR	+0.4 47%R
CCR	+4.0 50%R		
MKS	98 58%R	SCE	2.9% 42%R
DCE	2.9% 37%R		
MAS	+1.2 27%R		

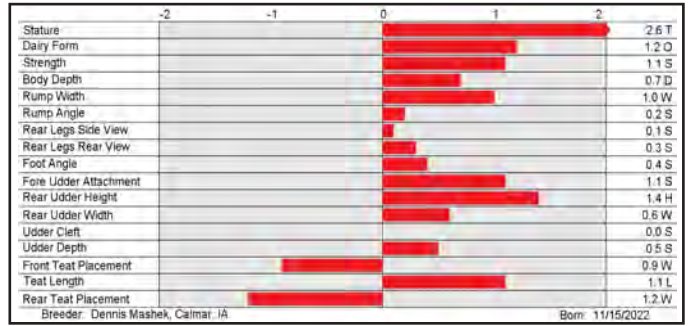
9BS948 HILLTOP ACRES PT POPCORN 8403250267190

Derringer x Paparazzi x Silver



WT MT DT BH2T BH14T B-Casein: A1A2 K-Casein: BB

CDCB-S Genomic Evaluation		(04/25)	
Milk	+532 64%R	Net Merit (58%R)	+\$285
Protein	+0.04% +26	Cheese Merit	+\$298
Fat	+0.02% +27	CFP	+53



CDCB-S/BSCBA Genomic Evaluation		(04/25)	
Type	+0.7 66%R	+0.63UDC	+0.3Mobility
GPPR +95			

Health and Fertility		(04/25)	
SCS	3.04 59%R	PL	+2.8 54%R
LIV	+0.8 42%R		
DPR	+1.8 52%R	HCR	+1.2 44%R
CCR	+1.8 48%R		
MKS	105 57%R	SCE	2.1% 41%R
DCE	2.3% 33%R		
MAS	-0.3 26%R		

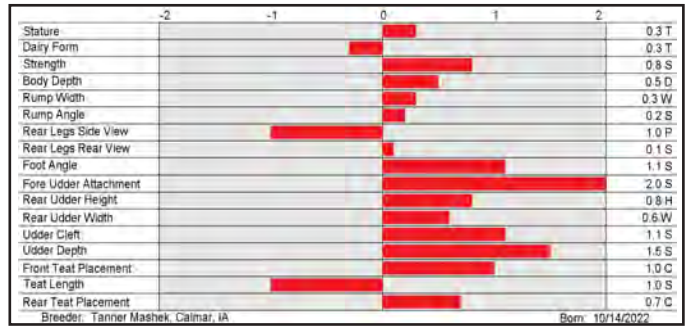
9BS946 HILLTOP ACRES TRICKSTER ETV 8403256390078

Design x Doboy x Anibal



WT MT DT BH2T BH14T B-Casein: A1A2 K-Casein: AB

CDCB-S Genomic Evaluation		(04/25)	
Milk	+147 67%R	Net Merit (60%R)	+\$198
Protein	+0.07% +19	Cheese Merit	+\$223
Fat	+0.06% +18	CFP	+37



CDCB-S/BSCBA Genomic Evaluation		(04/25)	
Type	+0.8 68%R	+1.10UDC	+0.1Mobility
GPPR +78			

Health and Fertility		(04/25)	
SCS	2.79 62%R	PL	+2.3 56%R
LIV	+0.4 44%R		
DPR	+1.2 54%R	HCR	-0.6 46%R
CCR	-1.2 48%R		
MKS	102 61%R	SCE	2.6% 43%R
DCE	3.0% 39%R		
MAS	+1.1 27%R		

9BS945 PLAYTIME



HILLTOP ACRES PRINCESS ETV "2E92 2E93MS"
Dam of PLAYTIME

9BS950 JAXSON P



R HART BROOKINGS ATLANTA "2E91 2E93MS"
Fourth dam of JAXSON P

9BS948 POPCORN



POPCORN

9BS946 TRICKSTER



HILLTOP ACRES DB TABBY ETV "2E91 2E91MS" CERT
Dam of TRICKSTER

SHOWCASE SIRE

WILDCARD

9AY152 TOPPGLN WISHFUL'S WILDCARD-ET

8403266225808 *TF AMF AH1T AH2T
B-Casein: A1A2 K-Casein: AE



TOPPGLN WISHFUL THINKING-ET (EX-95)
Four-time grand champion, International Junior Ayrshire Show

S: Marilee Autograph-ET
D: Toppglen Wishful Thinking (EX-95)
MGS: De La Plaine Prime
MGD: Conebella Sarge's Wendy (EX-93-4E)
MGGS: Maple-Dell Avenger SARGE-ET

CDCB-S Genomic Evaluation		(04/25)	
Milk	-340 44%R	Net Merit (41%R)	-\$108
Protein	+0.00% -11	Cheese Merit	-\$109
Fat	+0.06% -4	CFP	-15

CDCB-S/ABA Genomic Evaluation		(04/25)	
Type +0.3	41%R	GPTI +380	

Health and Fertility		(04/25)	
SCS 3.00	37%R	PL -0.5	31%R
DPR -0.5	29%R	LIV +0.1	23%R
		HCR -0.3	26%R
		CCR -1.0	27%R

97.53% Ayrshire

	-2	-1	0	1	2	
Stature						1.1 T
Strength						0.2 S
Body Depth						0.5 D
Dairy Form						0.6 D
Rump Angle						0.5 S
Rump Width						0.9 W
Rear Legs Side View						0.2 S
Foot Angle						0.3 L
Fore Udder Attachment						1.2 L
Rear Udder Height						0.5 L
Rear Udder Width						0.6 N
Udder Cleft						0.8 S
Udder Depth						0.0 S
Front Test Placement						1.0 W
Test Length						1.5 L

Breeder: Tanner, Brennan, Marissa & Logan Topp, New Bremen, OH | Born: 2/18/2023

MIC DROP

9AY153 CLASSIC MIMOSA MIC DROP

8403136721077 *TF AMF AH1T AH2T
B-Casein: A1A2 K-Casein: AB



MISS MALIBU MIMOSA (EX-95-2E), second place junior three-year-old and reserve intermediate champion, International Ayrshire Show, 2021

S: Domynaire Bolsonaro
D: Miss Malibu Mimosa (EX-95-2E)
MGS: Palmyra Berkely REAGAN-ET
MGD: Old-Bankston Jc Malibu (EX-94-2E)
MGGS: Forever Schoon Predator-ET

CDCB-S Genomic Evaluation		(04/25)	
Milk	+376 43%R	Net Merit (40%R)	+\$81
Protein	-0.01% +10	Cheese Merit	+\$80
Fat	+0.04% +22	CFP	+32

CDCB-S/ABA Genomic Evaluation		(04/25)	
Type +0.5	39%R	GPTI +447	

Health and Fertility		(04/25)	
SCS 2.98	36%R	PL -0.2	30%R
DPR -0.9	27%R	LIV -1.2	24%R
		HCR -1.6	25%R
		CCR -2.6	26%R

Purebred Ayrshire

	-2	-1	0	1	2	
Stature						0.3 T
Strength						0.6 S
Body Depth						0.5 D
Dairy Form						0.3 D
Rump Angle						0.9 H
Rump Width						0.9 W
Rear Legs Side View						0.1 P
Foot Angle						0.4 S
Fore Udder Attachment						1.1 S
Rear Udder Height						0.9 H
Rear Udder Width						0.4 W
Udder Cleft						0.4 S
Udder Depth						0.2 S
Front Test Placement						0.1 C
Test Length						0.2 L

Breeder: Whit Michele, Melissa Burns & Duane Cole, Edworth, IA | Born: 6/21/2023

ROBINSON

9AY149 SPRINGHILL PALMYRA ROBINSON

8403242487321 *TF AMF AH1T AH2T
B-Casein: A1A2 K-Casein: AE



PALMYRA LOCHINVAR B RUTH (EX-92-2E)

S: Bear-Ayr Distinct KINGSIRE
D: Palmyra Lochinvar B Ruth (EX-92-2E)
MGS: Libby's LOCHINVAR
MGD: Palmyra Berkely P Ruth-ET (EX-94-2E-ELITE)
MGGS: Palmyra Bendig BERKELY-ET

CDCB-S Genomic Evaluation		(04/25)	
Milk	+36 50%R	Net Merit (47%R)	-\$128
Protein	+0.02% +5	Cheese Merit	-\$127
Fat	-0.04% -6	CFP	-1

CDCB-S/ABA Genomic Evaluation		(04/25)	
Type +0.6	47%R	GPTI +420	

Health and Fertility		(04/25)	
SCS 3.21	45%R	PL -0.1	39%R
DPR -0.9	38%R	LIV -0.1	30%R
		HCR -1.2	31%R
		CCR -2.0	38%R

Purebred Ayrshire

	-2	-1	0	1	2	
Stature						3.5 T
Strength						1.2 S
Body Depth						0.4 D
Dairy Form						0.4 D
Rump Angle						0.2 H
Rump Width						2.6 W
Rear Legs Side View						0.7 P
Foot Angle						1.2 S
Fore Udder Attachment						1.5 S
Rear Udder Height						0.9 H
Rear Udder Width						0.6 W
Udder Cleft						-1.0 S
Udder Depth						1.8 S
Front Test Placement						0.5 C
Test Length						1.4 L

Breeder: Springhill Farm & Evan Creek, Big Prairie, OH | Born: 11/11/2022

P R O V E N A N D G F O R C E S I R E S

9AY129 HIDDEN-VALLEY JAMAICA 8403144579659

Champ x Modem x Jamboree

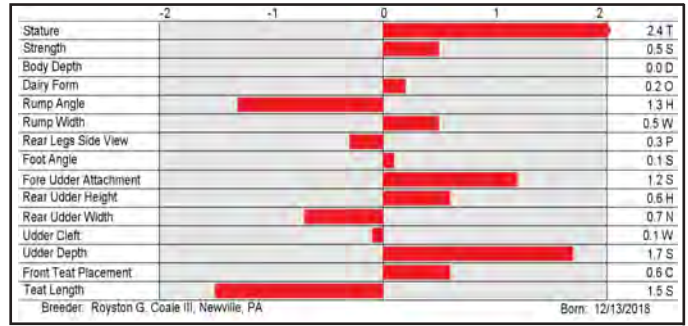
*TF AMF AH2C AH1T B-Casein: A1A2 K-Casein: BE

CDCB-S Genomic Evaluation		(04/25)	30 Dtrs/21 Herds	RIP 50%
Milk	+255	76%R	Net Merit (68%R)	+\$37
Protein	+0.00%	+8	Cheese Merit	+\$43
Fat	-0.05%	+1	CFP	+9

CDCB-S/ABA Genomic Evaluation		(04/25)	15 Dtrs/10 Herds
Type	+0.3	66%R	GPTI +430

Health and Fertility		(04/25)
SCS	2.77	59%R
PL	+0.5	48%R
LIV	+0.8	27%R
DPR	-1.2	43%R
HCR	-0.3	33%R
CCR	-1.3	42%R

97.45% Ayrshire



9AY151 GOOD-VUE GARNETT-P 8403267034293

Reynolds x Jamison P*TF x Bendig

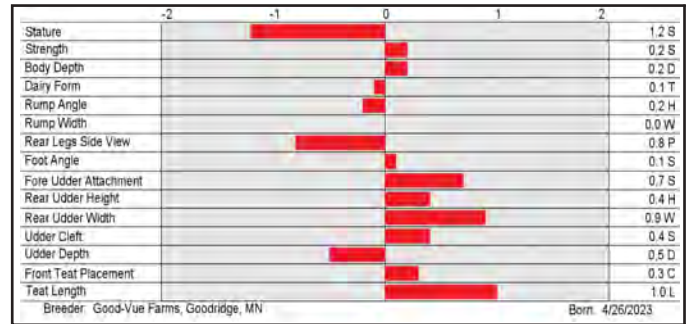
*TF AMF AH1T AH2T B-Casein: A1A2 K-Casein: AE

CDCB-S Genomic Evaluation		(04/25)
Milk	+17	48%R
Protein	-0.09%	-15
Fat	-0.08%	-14
Net Merit (43%R)		-\$39
Cheese Merit		-\$59
CFP		-29

CDCB-S/ABA Genomic Evaluation		(04/25)
Type	+0.1	41%R
GPTI		+361

Health and Fertility		(04/25)
SCS	2.89	39%R
PL	+1.8	32%R
LIV	+0.5	26%R
DPR	+0.6	29%R
HCR	+1.3	27%R
CCR	+1.7	28%R

Purebred Ayrshire



9AY148 GOOD-VUE BURANDT 8403247937726

Reynolds x Armani x Mandarin

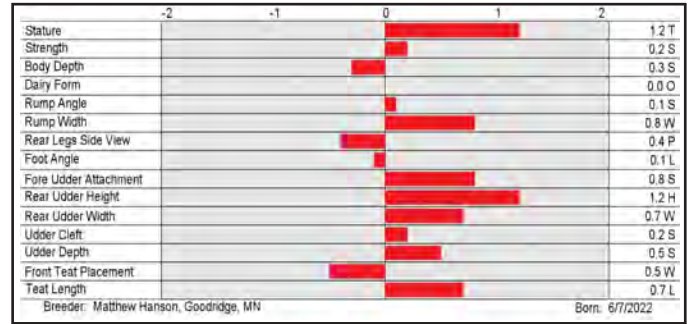
*TF AMF AH1T AH2T B-Casein: A1A1 K-Casein: AE

CDCB-S Genomic Evaluation		(04/25)
Milk	+535	46%R
Protein	-0.05%	+8
Fat	-0.02%	+18
Net Merit (42%R)		+\$124
Cheese Merit		+\$115
CFP		+26

CDCB-S/ABA Genomic Evaluation		(04/25)
Type	+0.2	44%R
GPTI		+439

Health and Fertility		(04/25)
SCS	2.86	38%R
PL	-0.1	31%R
LIV	-0.4	26%R
DPR	-0.2	29%R
HCR	+1.3	28%R
CCR	+0.1	29%R

96.69% Ayrshire



9AY150 PALMYRA O'REILLY-P 8403230757957

Orlando-P x Blackjack x Tri-Star

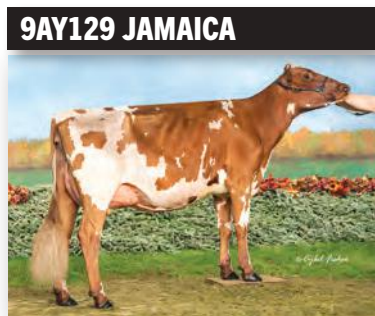
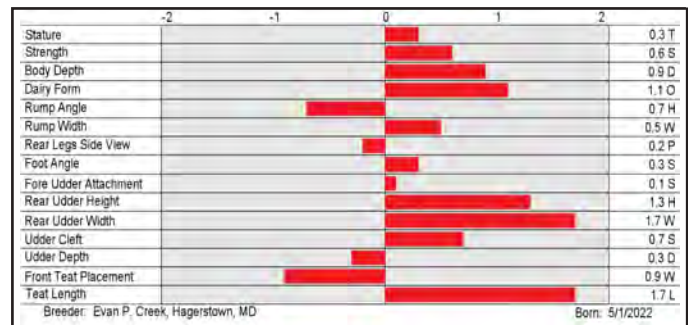
*TF AMF AH1T AH2T B-Casein: A1A1 K-Casein: AE

CDCB-S Genomic Evaluation		(04/25)
Milk	+537	45%R
Protein	-0.05%	+9
Fat	-0.09%	+5
Net Merit (42%R)		+\$74
Cheese Merit		+\$61
CFP		+14

CDCB-S/ABA Genomic Evaluation		(04/25)
Type	+0.4	40%R
GPTI		+423

Health and Fertility		(04/25)
SCS	3.16	38%R
PL	+0.4	31%R
LIV	+0.2	27%R
DPR	-0.4	27%R
HCR	-0.5	27%R
CCR	+0.8	28%R

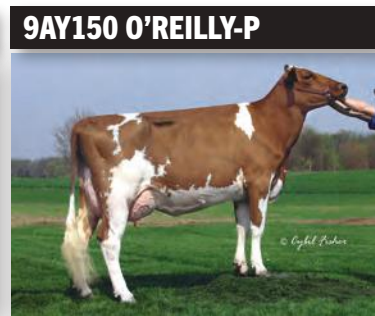
98.84% Ayrshire



9AY129 JAMAICA
PALMYRA JAMAICA R GINGER (VG-86)
Peter Vail, Englewood, FL



9AY148 BURANDT
GOOD-VUE MANDARIN BRENDA (EX-93-ELITE)
Grandam of BURANDT



9AY150 O'REILLY-P
GALNEY-EPC L.H. ROSY-ET (EX-90)
Third dam of O'REILLY-P



EXCLUSIVE SOURCE

for gold



Guernsey Gold Sires was established in cooperation with Select Sires to provide elite genetic options for Guernsey breeders in the U.S. and around the world. To receive semen domestically, simply place your order at www.usguernsey.com using the GGS tab. Orders will be shipped from Select Sires directly to the customer using three-day FedEx delivery with a \$100 shipping and handling fee. Orders of 30 or more straws of semen will receive free shipping and handling. In international markets, Guernsey Gold Sires semen is available through World Wide Sires, LTD (Europe, Asia, Africa and Oceania), Select Sires Canada, and Central and South America Select Sires representatives.

6GU120 KAPTION daughter, Up The Creek Kaption Goofy (GP-84-VG-MS), Up The Creek Farm, Lester Prairie, MN;
 6GU116 CHECKMATE daughter, Up The Creek Checkmate Wench (GP-82), Up The Creek Farm, Lester Prairie, MN

PROVEN LINEUP		PTI	NM\$	R%	MILK	FAT	PRO	TYPE	UDC	FLC	R%	DPR	PL	SCS	B-CASEIN	SIRE STACK
6GU120	KAPTION	61	373	61	72	30	7	0.3	1.1	0.3	66	-0.5	4.2	2.90	A2A2	NET WORTH x NOVAK x PRADA
6GU116	CHECKMATE	60	239	68	554	13	23	0.1	-0.1	0.2	76	1.8	2.9	2.93	A2A2	RICHARD x LOGO x YOGIBEAR
6GU112	THEO	54	399	80	-360	18	-3	0.1	0.8	0.3	91	2.4	4.3	2.74	A2A2	NET WORTH x DOUBLE L x AARON
6GU115	DESIGN	19	57	67	-443	0	-8	0.4	0.8	0.5	70	0.3	1.6	2.92	A2A2	CHARMING x LEVI x YOGIBEAR
YOUNG SIRE LINEUP		PTI	NM\$	R%	MILK	FAT	PRO	TYPE	UDC	FLC	R%	DPR	PL	SCS	B-CASEIN	SIRE STACK
6GU141	ROCKET*	82	375	53	241	20	13	1.0	1.3	0.7	59	1.9	4.4	2.74	A2A2	THEO x LOGO x REGGIE
6GU128	PELTON	72	479	53	-21	28	3	0.4	1.3	0.2	59	2.1	4.3	2.78	A2A2	THEO x MINT x LAREDO
6GU140	OPTIMUS	70	286	49	130	16	7	0.9	1.3	0.9	55	1.5	4.7	2.84	A2A2	AUDREY x LOGO x ALSTAR
6GU130	SPARTA-P	69	30	50	670	10	28	1.6	1.5	1.8	58	-2.1	0.1	2.80	A2A2	JAVA-P x SHERLOCK x CAESAR
6GU127	MAVERICK	68	387	52	83	29	4	0.3	1.3	-0.3	59	2.1	3.4	2.77	A2A2	CRAIG x JORDY x DOUBLE L
6GU145	OKASH*	68	356	48	-103	21	7	0.8	1.8	0.1	55	1.2	4.1	2.79	A2A2	MAVERICK x FREEDOM x CHALLENGE
6GU144	JORDAN*	66	408	46	21	25	4	0.6	1.2	-0.2	53	1.9	4.1	2.78	A2A2	COIN COLLECTOR x THEO x PROFIT
6GU146	DISC JOCKEY*	61	254	50	309	16	6	1.2	1.9	0.4	57	0.3	3.2	2.92	A2A2	COIN COLLECTOR x YOGIBEAR x COPPER
6GU131	MCDREAMY*	58	194	55	-46	12	12	0.7	1.2	0.5	61	0.8	2.2	2.90	A2A2	RICHARD x ATLAS x TILLER
6GU134	JETHRO*	55	186	49	-48	14	2	1.0	1.5	0.1	56	0.6	3.9	2.90	A2A2	TSUNAMI x PROFIT x V I P
6GU125	JRUE	51	207	52	-95	7	1	0.3	1.2	-0.4	58	2.7	3.3	2.75	A2A2	CRAIG x PROFIT x V I P
6GU138	SIMON*	50	88	52	254	13	14	0.4	0.7	0.7	57	0.0	0.0	2.92	A2A2	LOCKLEY x PILOT x LAREDO
6GU139	UNANIMOUS*	38	-80	53	-587	15	1	1.3	1.6	1.0	57	-1.0	-1.1	3.10	A2A2	JAMES DEAN x KOJACK x RODNEY
6GU122	AUDREY	34	223	56	151	12	5	0.3	0.2	0.1	63	1.5	2.8	3.02	A2A2	LONDON x MOREY x CHALLENGE
6GU124	JUNGLE	34	159	53	-204	3	-4	0.7	1.4	0.7	59	0.5	3.0	2.82	A2A2	THEO x PIES x MENTOR
6GU121	LANDON	33	31	58	185	-4	2	0.8	1.5	0.7	63	-0.4	2.9	2.89	A2A2	COIN x FAME x AMERICAN PIE
6GU126	GOLDMINE	27	-75	52	-408	-1	3	0.8	1.7	0.8	58	-1.4	0.5	3.13	A2A2	JAMES DEAN x PIES x MENTOR
6GU133	CADET*	21	-8	53	470	3	5	0.4	0.7	0.3	57	-0.1	0.2	3.04	A2A2	JC PENNEY x BEST MAN x TOP NOTCH
6GU123	DJ	-7	-169	56	-296	-8	-6	0.6	1.1	0.5	61	-2.7	0.7	3.04	A2A2	JC PENNEY x YOGIBEAR x REGAL

* = sexed semen available

All bulls on this page are eligible for semen export to Canada

IB-M/USA = Interbull-MACE (Multiple Across Country Evaluations) Summary; G = USDA Genomic Evaluation *TM = marker tested non-carrier at a 90% or higher reliability for SMA (*M) = marker tested carrier at a 90% or higher reliability for SMA *TF = marker tested non-carrier for fishy-off flavor recessive trait PC = Polled carrier *Jersey Performance Index, JPI, Jersey Udder Index and JUI are trademarks of the American Jersey Cattle Association. *Program for Genetic Advancement, PGA and *gender* SELECTED are trademarks of Select Sires Inc. *Calf Wellness and CWS are trademarks of Zoetis Inc., its affiliates and/or its licensors. *Wellness Trait Index, WTS, Dairy Wellness Profit Index, DWP\$ and CLARIFIDE are registered trademarks of Zoetis Inc., its affiliates and/or its licensors. *Select Reproductive Solutions, SRS, SMS, Select Mating Service, HHP\$, Your Success Our Passion, and the Select Sires logo are registered trademarks of Select Sires Inc., Plain City, Ohio.

Products sold by Select Sires Inc. or its affiliates to a buyer shall not be used other than as authorized by the terms and conditions in the sales invoice. Each conventionally processed semen straw (not sex sorted) shall be used only for insemination of a female bovine. ALL OTHER USES OF BOVINE SEMEN FROM SELECT SIRES INC. AND ITS AFFILIATES ARE STRICTLY PROHIBITED WITHOUT THE PRIOR WRITTEN CONSENT OF SELECT SIRES INC. INCLUDING (WITHOUT LIMITATION) GENOTYPING, SEQUENCING, CLONING, GENETIC ANALYSIS, GENETIC MANIPULATION OR FOR RESEARCH. Select Sires Inc., its member cooperatives, its agents or employees cannot and do not guarantee the conception rate, gender, quality or productivity to be obtained in connection with the use of its products or recommended techniques. It makes no warranties of any kind whatsoever, expressed or implied, which extend beyond the description of its products and hereby disclaims all warranties of merchantability and fitness for a particular purpose. In the unlikely event that any of our products shall be proven to be defective, damages resulting from their use shall exclude consequential damages and be limited to the purchase price of the product.

Denotes sires that are eligible for semen export to Canada.

gender SELECTED and *gender* SELECTED 4M are trademarks of Select Sires Inc. Ultraplus and Ultraplus 4M are trademarks of STGen LLC. All *gender* SELECTED semen is processed using Ultraplus technology. **Limitations and Conditions of Sale:** *gender* SELECTED semen shall be used only for the single insemination of one female bovine during natural ovulation with the intent to produce a single offspring unless specifically approved on an individual customer basis by Sexing Technologies in writing. As a condition of purchasing *gender* SELECTED semen, the purchaser agrees that *gender* SELECTED semen will not be reverse sorted or re-sorted unless specifically permitted, in advance, on a case-by-case basis by Select Sires in writing. Select Sires intends to monitor the use of the *gender* SELECTED semen and vigorously enforce these restrictions on use. Please see <http://www.selectsires.com/designations/gendersselected.html> for additional details.

ProfitSOURCE®

Pick a Pack, Increase Your Profits

Each ProfitSOURCE and TD Beef pack contains a blend of three sires selected to meet the needs of the dairy, the packer and each supply chain partner in-between. These sires qualify for the stringent ProfitSOURCE requirements and offer the most elite EPDs and indexes that impact your bottom line. ProfitSOURCE sires have been selected to be used confidently to settle cows in your herd. The pack provides insurance that dairies will experience the consistent high fertility for which Select Sires is known.

<p>2AN10001</p>	<p>TD Beef Balanced Pack</p> <ul style="list-style-type: none"> ✓ Proven carcass merit ✓ Each sire in the pack ranks in the Top 10% for \$AxH ✓ Covering all the bases 			
<p>2AN10013</p>	<p>TD Beef Prime Pack</p> <ul style="list-style-type: none"> ✓ Moderate Birth Weight with elite carcass merit ✓ Each sire in the pack ranks in the Top 2% for \$AxH ✓ Major quality grade advantages 			
<p>2CH10001</p>	<p>TD Beef Charolais Marbling Pack</p> <ul style="list-style-type: none"> ✓ Substantial carcass yield benefits ✓ Gain more quality premiums 			
<p>714AN10008 714AN10009</p>	<p>ProfitSOURCE Explosive Growth Pack</p> <ul style="list-style-type: none"> ✓ Average over +1.0 for Marbling and Ribeye ✓ Each sire in the pack ranks in the Top 10% for \$AxH ✓ More pounds = More pay weight 	<p>✓ 714AN10009 Qualifies for export</p>		
<p>714AN10000 714AN10010 714AN10012</p>	<p>ProfitSOURCE Calving Ease Confidence Pack</p> <ul style="list-style-type: none"> ✓ Sires with growth and carcass merit ✓ Each sire in the pack ranks in the Top 10% for \$AxH ✓ Use to lower dystocia risk 			
<p>714AN10014</p>	<p>ProfitSOURCE Muscling and Ribeye Pack</p> <ul style="list-style-type: none"> ✓ Each sire in the pack ranks over +1.0 for both Marbling and Ribeye ✓ Each sire in the pack ranks in the Top 10% for \$AxH ✓ Raise the bar for muscling 			
<p>714SM10000</p>	<p>ProfitSOURCE SimAngus™ Growth Pack</p> <ul style="list-style-type: none"> ✓ High Terminal Index ✓ Added growth 			



Consult with your Select Sires genetic advisor to learn how ProfitSOURCE can boost your bottom line!

*ProfitSOURCE, Your Success Our Passion., and the Select Sires logo are registered trademarks of Select Sires Inc., Plain City, Ohio. Certified Angus Beef is a registered trademark of Certified Angus Beef LLC. Angus bulls with a minimum marbling value of +0.65 and an Angus Grid Value Index (SG) of +55 or higher qualify for CAB Targeting the Brand. SimAngus is a trademark of the American Simmental Association.



WINNER
SILVER MEDAL
INNOVATION
AWARD
EUROTIER 2024



YOUNGSTOCK MONITOR

LIFETIME MONITORING. MAXIMIZE PERFORMANCE.

Implement the technology designed to optimize calf rearing and maximize future herd health and productivity. Youngstock Monitor uses lightweight ear sensors to track crucial development stages, helping you improve calf health and welfare now for a strong, productive herd later.

Real-time alerts ensure each calf gets the attention it needs, leading to timely interventions, lower treatment intensity, reduced reliance on antibiotics, and improved labor efficiency. Powered by Artificial Intelligence and continuously evolving algorithms, the system adapts to your specific farm and the unique behavior of each calf.

With CowManager's Lifetime Monitoring system, you can support the full lifecycle of your herd - from calf to cow - ensuring optimal health, growth and performance at every stage.



SCAN NOW



AHEAD OF THE HERD TOGETHER

www.cowmanager.com

*CowManager is a registered trademark of Agis Automatisering.



ARE YOUR
CALVES STAYING
HYDRATED?

Combat heat stress by boosting hydration in calves.



Accel RS and Calf Accellyte are designed to restore proper fluid balance and improve electrolyte and water absorption to maintain growth rates.

Contact your Select Sires representative today to **BUILD** A BETTER **CALF**.[®]

Buyer assumes all responsibility for use, storage and handling of these products. Select Sires Inc. makes no claims or warranties, expressed or implied.
®Build A Better Calf and the Select Sires logo are registered trademarks of Select Sires Inc., Plain City, Ohio. Manufactured for Select Sires Inc., 11740 U.S. 42 N, Plain City, OH 43064.

Contact your local rep for more information.



CentralStar Cooperative
Mitchell Schleicher
608.577.6566



Select Sires Member Cooperative
Chad Walker
614.878.5333



Premier Select Sires
Jeff Hostetter
717.228.4717



Premier Select Sires
Dan Stockebrand
352.275.8543

BOUNCE BACK STRONGER WITH BIOFRESH®

BIOFRESH® Microbial Bolus gives cows the support they need to stay on track, perform at their best, and recover quickly.

- ✓ Faster bounce-back for fresh cows
- ✓ Restores feed intake and ruminal fermentation for off-feed cows
- ✓ Enhances immune function for challenged and high SCC cows



10% OFF!

(May 1 - June 30, 2025)



"Giving two BioFresh boluses at freshening has resulted in increased feed intakes, fewer cases of metritis and retained placentas, and improved first-service conception rates with sexed semen."

Brandon Boogerd • Select Sires Member Cooperative Reproductive and Genetic Advisor



www.agrariansolutions.com | (574) 825-1224



YOUR SUCCESS *Our Passion.*

Phone (614) 873-4683 | www.selectsires.com

BIOFRESH® Microbial Bolus is a trademark of Select Sires Inc. and is manufactured by Agrarian Solutions®. All claims, representation and warranties, expressed or implied, are made only by Agrarian Solutions and not by Select Sires Inc.

GET MORE PER GALLON.

SOP™ Lagoon leverages beneficial microbes to decompose organic matter in manure, encouraging the consumption of carbon and nitrogen compounds while limiting the activity of methanogens and other emission-producing bacteria. Enhance nutrient efficiency and plant resilience throughout the growing season with SOP Lagoon.

Contact your local Select Sires representative to access exclusive savings!



SOP Lagoon is distributed by Select Sires Inc. through the wholly-owned sustainability company, Low Carbon Technologies, LLC. Buyer assumes all responsibility for use, storage and handling of SOP Lagoon. Low Carbon Technologies, LLC makes no claims or warranties, expressed or implied. Resonant is developing a new protocol to maximize the credit value generated and attributable to the application of SOP Lagoon in a program. Customers will receive majority of the net economic benefits from such credits once issued.™The Low Carbon Technologies logo is a trademark of Low Carbon Technologies, LLC, Plain City, OH. SOP is a trademark of SOP S.r.l. Società Benefit.





**ARE YOU
MAXIMIZING
YOUR HERD'S
RUMEN POTENTIAL?**



Jump-start their rumen when they need it most.

Tri-Start is designed to jump start the rumen while Tri-Mic 1:50 is designed to provide continued support in re-establishing beneficial microbial populations that enhance the function and health of the rumen while also improving feed utilization.

Contact your Select Sires representative today to learn more about Herd Management Solutions.

Buyer assumes all responsibility for use, storage and handling of these products. Select Sires Inc. makes no claims or warranties, expressed or implied.
*The Select Sires logo is a registered trademark of Select Sires Inc., Plain City, Ohio. Manufactured for Select Sires Inc., 11740 U.S. 42 N, Plain City, OH 43064.



ProfitSOURCE[®]

Your **SOURCE** for **GENETICS**
that create **LONG-TERM PROFIT.**

Traits that directly influence the future of your dairy:

FERTILITY

CALVING EASE

Traits that are essential for long-term beef on dairy profit:

GROWTH

TERMINAL

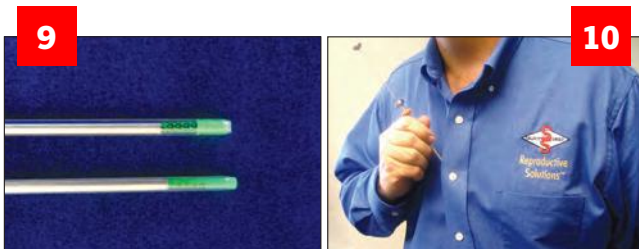
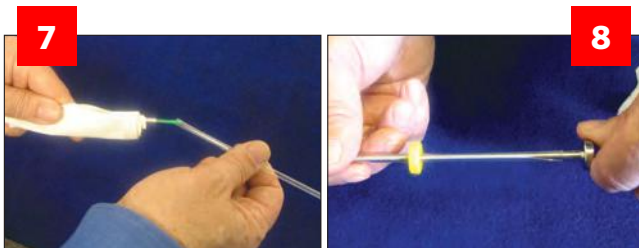
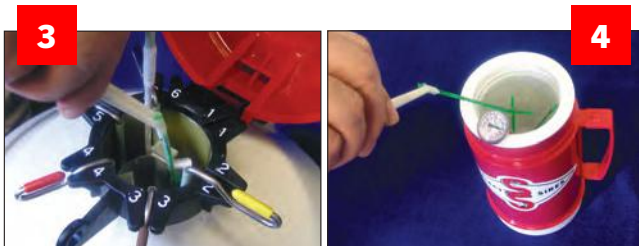
While factors like fertility and calving ease are directly felt by the dairy, it is beneficial to address the buyers' needs too through genetic selection for growth and carcass. With ProfitSOURCE's downstream-driven lineup, you can produce calves that exceed beef supply chain desires and secure the profit potential for your dairy!

Scan the QR code to read the complete article: Not Done As a Day-Old to learn more!



HANDLING FROZEN SEMEN STRAWS

Proper semen handling is essential to maintain optimum reproductive performance of your A.I. breeding program. To maintain the high quality of semen you purchased from your Select Sires representative, you must pay strict attention to the many details of semen handling outlined on this poster. If you have questions about the correct handling procedures for Select Sires semen, please contact your Select Sires Reproductive Solutions® Specialist.



STRAW RETRIEVAL AND THAWING

Avoid raising straws above the frost line. **1**

On new canes, bend the identification tab up to a 45° angle. **2**

Use the forceps to remove one straw at a time from the top. If it takes more than 10 seconds to retrieve the straw, lower the canister back into the tank and allow to re-cool for 20 to 30 seconds. **3**

Shake the straw gently to remove excess liquid nitrogen and promptly place in 95° F (35° C) water to thaw for at least 45 seconds. Thaw only as many straws as you can use in 10 to 15 minutes. When multiple straws are thawed, do not allow direct contact during thawing process. **4**

To retrieve straws from the bottom goblet, grasp the cane and raise it until the straws are even with other cane tops. Hold the cane and canister with one hand. With your forceps in the other hand, remove the desired straw and place it in the thaw water. **5**

LOADING THE INSEMINATION GUN

Before loading the insemination gun, pre-warm the barrel by stroking it vigorously with your hand five or six times.

Make sure the plunger is back about six inches to allow for insertion of the straw.

Remove the straw from the thaw water and wipe it completely dry with a paper towel.

Check to see that the straw contains semen from the desired bull and that a small bubble is at the crimped end.

If the bubble is not at the crimped end, gently tap the straw until the bubble moves to its correct position.

Place the cotton plug end of the straw in the gun. It will stop at exactly the right depth.

Wipe the scissors with a paper towel and cut the straw at a right angle 1/4" below the lab seal. **6**

Slide the plastic sheath over the straw and gun and firmly attach the sheath and gun together. **7 8**

Inspect the straw end of the gun to ensure a proper seal between sheath and straw. **9**

Wrap loaded guns in a paper towel or in a plastic sheath cover to provide both thermal and hygienic protection and place inside your clothing for transport to the cow. **10**

*Select Reproductive Solutions and the Select Sires logo are registered trademarks of Select Sires Inc.

INDEX // STUD CODE ORDER

AYRSHIRE SIRES

Code No.	Code Name	Page
PROVEN SIRE		
9AY129	JAMAICA	32

Code No.	Code Name	Page
YOUNG SIRES		
9AY148	BURANDT	32
9AY149	ROBINSON	31
9AY150	O'REILLY-P	32

Code No.	Code Name	Page
9AY151	GARNETT-P	32
9AY152	WILDCARD	31
9AY153	MIC DROP	31

BROWN SWISS SIRES

Code No.	Code Name	Page
PROVEN SIRE		
9BS924	TANK	28
YOUNG SIRES		
9BS942	SAIGON P	29

Code No.	Code Name	Page
9BS943	DUBAI	29
9BS945	PLAYTIME	30
9BS946	TRICKSTER	30
9BS948	POPCORN	30
9BS950	JAXSON P	30

Code No.	Code Name	Page
9BS951	CRUZAN	29
9BS952	DETERMINATION	28
9BS953	NETFLIX	29
9BS954	WALDORF	28

XD SIRES

Code No.	Code Name	Page
PROVEN SIRE		
7XD5	UR TIGERWOODS	26
YOUNG SIRES		
7XD11	UR RICO	26
7XD14	UR JOE {0}-PP	26
9XD16	UR BACOT {0}	26
9XD17	UR RJ DAVIS {0}	26

Code No.	Code Name	Page
9XD21	UR PRITCHARD {0}	26
9XD22	UR HAUSER {0}	26
9XD23	UR BROGDON {0}	26
9XD24	UR MANEK {0}	26
9XD25	UR CARBON {0}	26
9XD26	UR NEGRONI {0}	26
9XD27	UR DAIQUIRI {0}	26
9XD28	UR EMISSIONS {0}	26

Code No.	Code Name	Page
9XD29	UR MARGARITA {0}	26
9XD31	UR MAITAI {0}-P	26
9XD32	UR ZOMBIE {0}-P	26
9XD34	UR NEUTRAL {0}	26
9XD35	UR SUSTAIN {0}	26
9XD37	UR COOL S {0}	26

GUERNSEY GOLD SIRES

Code No.	Code Name	Page
PROVEN SIRES		
6GU112	THEO	33
6GU115	DESIGN	33
6GU116	CHECKMATE	33
6GU118	HELIOS	33
YOUNG SIRES		
6GU117	KANDYMAN	33
6GU120	KAPTION	33
6GU121	LANDON	33

Code No.	Code Name	Page
YOUNG SIRES		
6GU122	AUDREY	33
6GU123	DJ	33
6GU124	JUNGLE	33
6GU125	JRUE	33
6GU126	GOLDMINE	33
6GU127	MAVERICK	33
6GU128	PELTON	33
6GU130	SPARTA-P	33
6GU131	MCDREAMY	33
6GU133	CADET	33

Code No.	Code Name	Page
6GU134	JETHRO	33
6GU138	SIMON	33
6GU139	UNANIMOUS	33
6GU140	OPTIMUS	33
6GU141	ROCKET	33
6GU144	JORDAN	33
6GU145	OKASH	33
6GU146	DISC JOCKEY	33

JERSEY PROVEN LINEUP

Code No.	Code Name	Page
7JE1726	STARLORD	7
7JE1758	JX THRASHER {6}	4
7JE1789	JX CHATHAM {4}	4
7JE1880	STEARNS	7
7JE1933	JX ELS {6}	6

Code No.	Code Name	Page
7JE1980	KAMAKAZI	7
7JE2022	OVERALLS	6
7JE2027	JX CORBIN {5}	6
7JE2033	CHARLTON	5
7JE5032	VICTORIOUS	8

Code No.	Code Name	Page
7JE5078	MIDWAY	5
14JE1921	JX CRISPIN {5}	4
14JE2002	VOLANT	7
250JE1947	JX CORSAIR {5}	5

JERSEY GFORCE LINEUP

Code No.	Code Name	Page
7JE2102	FIRSTCUT	10
7JE2120	BIG RED	9
7JE2157	WARREN {6}	16
7JE2163	CLEVER	10
7JE2181	JX UPCYCLE {6}-P	20
7JE2186	JX JULIUS {6}	17
7JE2196	JX KASKADE {5}	19
7JE2197	MIST	19
7JE2207	BIRKDALE {5}	16
7JE2221	JX COLLEGE {6}	14
7JE2223	VINTAGE-P	21
7JE2227	ODESZA	14
7JE2229	MATEO	16
7JE2230	DREAM-MAKER	8
7JE2233	JX BUTTERFLY {5}-P	20
7JE2236	JX SLAM {6}	14
7JE2238	JX WOODS {6}-P	23
7JE2258	FORREAL	10
7JE2271	WAVE-PP	25

Code No.	Code Name	Page
7JE2278	JX CUJO {6}-PP	23
7JE2280	JX CORONA {6}	19
7JE2283	JX CURVE {6}-PP	20
7JE2284	FULCRUM-P	23
7JE2296	MOON-PP	25
7JE2312	SIMPLE MAN-P	21
7JE2315	REDBULL	10
7JE2318	JX HOYLAKA {5}	17
7JE2320	JX CREDITS {6}-P	21
7JE2328	JX RAYQUAZA {6}-P	25
7JE2375	KRONOS-PP	9
14JE2083	SEISMIC-PP	24
14JE2103	JX GUETTA {6}-P	24
14JE2107	JX CABAL {5}	15
14JE2151	JX STROUD {6}	13
14JE2159	JX MULLIGAN {6}	17
14JE2169	JX DYNASTAR {4}	13
14JE2182	JX CHANCES {6}	13
14JE2189	JX CERBERUS {6}	18

Code No.	Code Name	Page
14JE2222	JX INXS {6}	15
14JE2239	SCHEFFLER	13
14JE2240	HOVLAND	18
14JE2241	SMITH	18
14JE2286	JX DENZEL {5}-P	22
14JE2291	TROON {5}-P	22
14JE2294	JX CAPER {5}-P	22
14JE2317	DWAYNE-PP	24
14JE2339	JX POSTON {5}	15
250JE2131	SKYFALL	9
250JE2188	JX AXWELL {6}	11
250JE2220	BRECKEN	9
250JE2282	JX CHIPPER {6}	11
250JE2290	JAL-P	11
250JE2379	DUTTON-P	8
507JE2314	JX CARTPATH {6}	12
614JE2337	PURIFY	12
614JE2353	JX WYNDHAM {5}	12

INDEX // ALPHABETICAL ORDER

AYRSHIRE SIRE

Code Name	Code No.	Page	Code Name	Code No.	Page	Code Name	Code No.	Page
PROVEN SIRE			YOUNG SIRE			O'REILLY-P..... 9AY150 32		
JAMAICA	9AY129	32	BURANDT	9AY148	32	ROBINSON	9AY149	31
			GARNETT-P	9AY151	32	WILDCARD	9AY152	31
			MIC DROP	9AY153	31			

BROWN SWISS SIRE

Code Name	Code No.	Page	Code Name	Code No.	Page	Code Name	Code No.	Page		
PROVEN SIRE			DETERMINATION..... 9BS952 28			POPCORN			9BS948	30
TANK	9BS924	28	DUBAI	9BS943	29	SAIGON P.....	9BS942	29		
			JAXSON P	9BS950	30	TRICKSTER	9BS946	30		
YOUNG SIRE			NETFLIX			9BS953	29	WALDORF	9BS954	28
CRUZAN	9BS951	29	PLAYTIME	9BS945	30					

XD SIRE

Code Name	Code No.	Page	Code Name	Code No.	Page	Code Name	Code No.	Page			
PROVEN SIRE			UR DAIQUIRI {0}			9XD27	26	UR NEUTRAL {0}		9XD34	26
UR TIGERWOODS	7XD5	26	UR EMISSIONS {0}	9XD28	26	UR PRITCHARD {0}	9XD21	26	UR RICO	7XD11	26
			UR HAUSER {0}	9XD22	26	UR RJ DAVIS {0}	9XD17	26	UR SUSTAIN {0}	9XD35	26
YOUNG SIRE			UR JOE {0}-PP			7XD14	26	UR ZOMBIE {0}-P	9XD32	26	
UR BACOT {0}	9XD16	26	UR MAITAI {0}-P	9XD31	26						
UR BROGDON {0}	9XD23	26	UR MANEK {0}	9XD24	26						
UR CARBON {0}	9XD25	26	UR MARGARITA {0}	9XD29	26						
UR COOL S {0}	9XD37	26	UR NEGRONI {0}	9XD26	26						

GUERNSEY GOLD SIRE

Code Name	Code No.	Page	Code Name	Code No.	Page	Code Name	Code No.	Page			
PROVEN SIRE			DJ			6GU123	33	MCDREAMY		6GU131	33
CHECKMATE	6GU116	33	GOLDMINE	6GU126	33	OKASH	6GU145	33	OPTIMUS	6GU140	33
DESIGN	6GU115	33	JETHRO	6GU134	33	PELTON	6GU128	33	ROCKET	6GU141	33
HELIOS	6GU118	33	JORDAN	6GU144	33	SIMON	6GU138	33	SPARTA-P	6GU130	33
THEO	6GU112	33	JRUE	6GU125	33	UNANIMOUS	6GU139	33			
YOUNG SIRE			JUNGLE			6GU124	33				
AUDREY	6GU122	33	KANDYMAN	6GU117	33						
CADET	6GU133	33	KAPTION	6GU120	33						
DISC JOCKEY	6GU146	33	LANDON	6GU121	33						
			MAVERICK	6GU127	33						

JERSEY PROVEN LINEUP

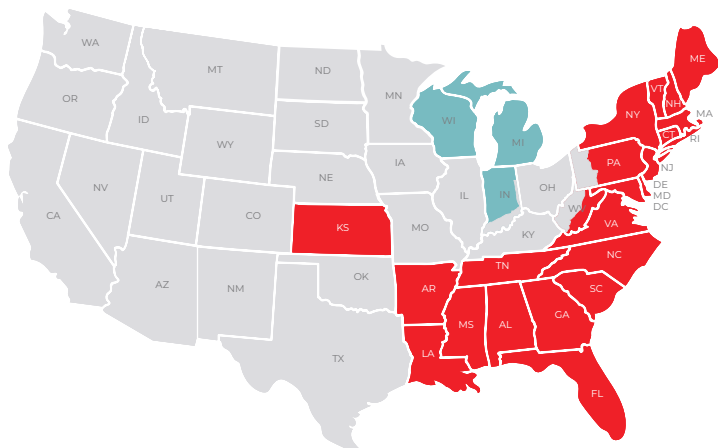
Code Name	Code No.	Page	Code Name	Code No.	Page	Code Name	Code No.	Page
CHARLTON	7JE2033	5	JX ELS {6}	7JE1933	6	STARLORD	7JE1726	7
JX CHATHAM {4}	7JE1789	4	JX THRASHER {6}	7JE1758	4	STEARNS	7JE1880	7
JX CORBIN {5}	7JE2027	6	KAMAKAZI	7JE1980	7	VICTORIOUS	7JE5032	8
JX CORSAIR {5}	250JE1947	5	MIDWAY	7JE5078	5	VOLANT	14JE2002	7
JX CRISPIN {5}	14JE1921	4	OVERALLS	7JE2022	6			

JERSEY GFORCE LINEUP

Code Name	Code No.	Page	Code Name	Code No.	Page	Code Name	Code No.	Page
BIG RED	7JE2120	9	JX CHIPPER {6}	250JE2282	11	JX WOODS {6}-P	7JE2238	23
BIRKDALE {5}	7JE2207	16	JX COLLEGE {6}	7JE2221	14	JX WYNDHAM {5}	614JE2353	12
BRECKEN	250JE2220	9	JX CORONA {6}	7JE2280	19	KRONOS-PP	7JE2375	9
CLEVER	7JE2163	10	JX CREDITS {6}-P	7JE2320	21	MATEO	7JE2229	16
DREAM-MAKER	7JE2230	8	JX CUJO {6}-PP	7JE2278	23	MIST	7JE2197	19
DUTTON-P	250JE2379	8	JX CURVE {6}-PP	7JE2283	20	MOON-PP	7JE2296	25
DWAYNE-PP	14JE2317	24	JX DENZEL {5}-P	14JE2286	22	ODESZA	7JE2227	14
FIRSTCUT	7JE2102	10	JX DYNASTAR {4}	14JE2169	13	PURIFY	614JE2337	12
FORREAL	7JE2258	10	JX GUETTA {6}-P	14JE2103	24	REDBULL	7JE2315	10
FULCRUM-P	7JE2284	23	JX HOYLAKE {5}	7JE2318	17	SCHEFFLER	14JE2239	13
HOVLAND	14JE2240	18	JX INXS {6}	14JE2222	15	SEISMIC-PP	14JE2083	24
JAL-P	250JE2290	11	JX JULIUS {6}	7JE2186	17	SIMPLE MAN-P	7JE2312	21
JX AXWELL {6}	250JE2188	11	JX KASKADE {5}	7JE2196	19	SKYFALL	250JE2131	9
JX BUTTERFULY {5}-P	7JE2233	20	JX MULLIGAN {6}	14JE2159	17	SMITH	14JE2241	18
JX CABAL {5}	14JE2107	15	JX POSTON {5}	14JE2339	15	TROON {5}-P	14JE2291	22
JX CAPER {5}-P	14JE2294	22	JX RAYQUAZA {6}-P	7JE2328	25	VINTAGE-P	7JE2223	21
JX CARTPATH {6}	507JE2314	12	JX SLAM {6}	7JE2236	14	WARREN {6}	7JE2157	16
JX CERBERUS {6}	14JE2189	18	JX STROUD {6}	14JE2151	13	WAVE-PP	7JE2271	25
JX CHANCES {6}	14JE2182	13	JX UPCYCLE {6}-P	7JE2181	20			

SELECT SIRES INC.

A FEDERATION OF THREE FARMER-OWNED AND -CONTROLLED COOPERATIVES



MISSION STATEMENT

With the highest integrity, maximize the productivity, profitability, and sustainability of livestock producers who feed the world.

SELECT SIRES' CORE VALUES

- * Integrity
- * Dedication
- * Respect
- * Innovation

MEMBER COOPERATIVES

CENTRALSTAR COOPERATIVE

Wisconsin Office
P.O. Box 191
Waupun, WI 53963

Michigan Office
P.O. Box 23157
Lansing, MI 48909

Phone: (800) 631-3510
E-mail: info@mycentralstar.com
www.mycentralstar.com
Serving Wisconsin, Michigan, Indiana (north of U.S. 50)
Phillip Dieter, chief executive officer

PREMIER SELECT SIRES, INC.

Main Business Office
1 Stony Mountain Road
Tunkhannock, PA 18657
Phone: (800) 227-6417 / (570) 836-3168
Fax: (570) 836-1490

Mark Carpenter, chief executive officer
Email: office@premierselect.com
www.premierselectsires.com

Serving Alabama, Arkansas, Connecticut, Delaware, Eastern Pennsylvania, Eastern West Virginia, Florida, Georgia, Kansas, Louisiana, Maine, Maryland, Massachusetts, Mississippi, New Hampshire, New Jersey, New York, North Carolina, Rhode Island, South Carolina, Tennessee, Vermont, Virginia

SELECT SIRES MEMBER COOPERATIVE

Main Business Office
1224 Alton Darby Creek Rd
Columbus, OH 43228
Phone: (614) 878-5333
Fax: (614) 870-2622
Email: ssmc@ssmcoop.com
www.ssmcoop.com

California Office
P.O. Box 1803
Turlock, CA 95381
Phone: (209) 667-8378 / (800) 278-8254
Fax: (209) 667-8379

Illinois Office
41W 394 US Highway 20
Hampshire, IL 60140
Phone: (847) 464-5281
Fax: (847) 464-4088

Minnesota Office
6601 Gregory Park Road
St. Cloud, MN 56301
Phone: (320) 259-6680 / (800) 795-1233

Utah Office
833 West 400 North
Logan, UT 84321
Phone: (435) 752-2022 / (800) 421-9245
Fax: (435) 752-2097

Washington Office
P.O. Box 507
Burlington, WA 98233
Phone: (800) 426-2697
Fax: (360) 757-7808

Chris Sigurdson, chief executive officer
Devin Albrecht, V.P. of Operations and Talent Management/Beef Sector Market Manager
Brad Meek, Area 1 Director, serving Idaho, Oregon, Montana, Washington and Wyoming

Murray Sinclair, Area 2 Director, serving Iowa, Minnesota, Nebraska, North Dakota, South Dakota

Chris Lahmers, Area 3 Director & Mexico Director, serving Illinois, Southern Indiana, Kentucky, Ohio, Missouri, West Pennsylvania, Western West Virginia

Rory White, Area 4 Director, serving Arizona, California, Nevada, Utah

Rodney Wegener, Area 5 Director, serving Colorado, New Mexico, Oklahoma, Texas

INTERNATIONAL

EUROPE, ASIA, AFRICA AND OCEANIA WORLD WIDE SIRES LTD.

5545 Avenida de los Robles
Visalia, CA 93291
Phone: (559) 622-2222
Fax: (559) 741-2828
Email: info@wwsires.com
www.wwsires.com

CENTRAL AND SOUTH AMERICA SELECT SIRES/LATIN AMERICA

Juan Pablo Muriel E-mail: murielJ@selectsires.com
Juan Pablo Barreto Email: jpbarreto@selectsires.com

MEXICO SELECT SIRES MEMBER COOPERATIVE

Dr. Fernando Alvarez
Av. Contituyentes Ote. #40, int. B-301
Queretaro, Qro Mexico 76040
Cell Phone: 52 1 442 219 2025
Fax: 52 1 442 277 5336
Email: falvarez@ssmcoop.com

CANADA SELECT SIRES CANADA

Howard Hamilton, general manager
RR 3 P.O. Box 489 / 2 Industrial Road
Kemptonville, Ontario K0G 1J0
Phone: (613) 258-3800
Fax: (613) 258-7257
www.selectsirescanada.com

In all other areas, contact:

SELECT SIRES INC.

Phone: (614) 873-4683
Fax: (614) 873-5751
Email: info-line@selectsires.com
www.selectsires.com



YOUR SUCCESS
Our Passion.

To purchase semen from any sire on the pages of this directory, call, email or write your local member cooperative on this page.



FIRST CLASS MAIL
 U.S. POSTAGE
PAID
 Minster, Ohio 45865
 Permit No. 1

Select Sires Inc.
 11740 U.S. 42 North
 Plain City, OH 43064-0143

Product of the USA



PUT DAUGHTER FERTILITY TO THE TEST.

Fertile cows that breed back quickly are critical to your profitability.

The average cost of one day open ranges from \$2 to \$6 – apply this loss to your whole herd and low reproductive performance can greatly impact your bottom line. With Select Sires' genetics, you can reduce involuntary culling and achieve your operational goals by using sires that excel for daughter fertility.

Average cost of days open information sourced from Dr. John Fetrow, College of Veterinary Medicine at the University of Minnesota.