

# APTO

AN INNOVATIVE  
BRAND WITH A  
CURIOUS DESIGN  
APPROACH

LOOKBOOK 2025





## OUR DESIGN PHILOSOPHY

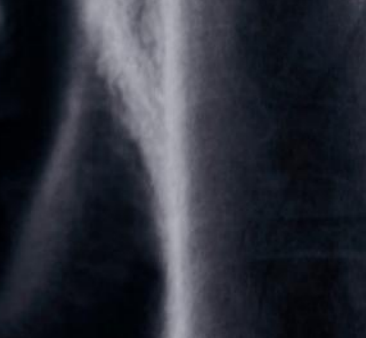
We believe that a well-designed workplace can inspire and improve the work experience. Each of our collections are carefully designed and crafted with functionality, high-quality materials and responsible production in mind.

### [AP-THO]

Our name is Portuguese and means change and adaptation. The name capsules our dedication to help you creating an environment that is resilient to change and masters the art of adaptation.



Réol



⊕ EXTEND ESPACO MOVEL





⊕ EXTEND ESPACO FIXO



EXTEND DUO "ESSENTIAL" - SPECIAL COLOR



EXTEND DUO “ESSENTIAL” WITH OAK VENEER BOTTOM PLATES AND GLAS WHITEBOARD

## ALWAYS CUSTOM-MADE

Our many variations of Extend are almost always custom-made. We have a base of standard models, which we then customize further to meet your needs.

The system is designed to be dynamic and modular, allowing the shelves to be adjusted to the desired heights. When it comes to color, adapting to a room's dimensions, or incorporating specific functionalities, we collaborate with you to create a design that fits your vision perfectly.

If you have the skills, you can design using our selection of DWG files available in our image bank or in pCon.box.



DAARBAK  
design



Silkeborg  
Bibliotekerne

# CASE - SILKEBORG LIBRARY

In a library, books can be decorative on their own. However, when placed on a shelf, their inviting covers and titles might not always catch the eye.

Silkeborg Library, Denmark has addressed this. A large, striking orange wall is now adorned with books arranged by various themes. Positioned right next to one of the library's reading areas, the wall invites exploration.



Formidlem  
**GUDR**  
Gudrun  
snit i Da  
konsek  
Gudrun  
om det



Janne Aagaard

# UDRUN OG DET HVIDE SNIT

En smertefri historie om kirurgiske fremskridt og et menneskes indgang til et nyt liv



Opfølgelse

De anbefaler

## UDRUN OG DET HVIDE SNIT

Var en af de mange, der fik det hvide snit. En operation med store fremskridt for patienten. Læs om hans skæbne og lær mere om historien om det hvide snit.






## **ABOUT**

CATEGORY: Public Area, Library

LOCATION: Silkeborg, Denmark

CUSTOMER: Silkeborg Library

DEALER / ARCHITECT:  
Daarbak Design

PRODUCENT & DESIGN: APTO

DESIGN: Extend Wall Mounted,  
Custom-made





## DESIGNED TO MEET UNIQUE NEEDS

The striking wall is not just an aesthetic addition but also a source of inspiration, with new titles and themes constantly rotating to spark the curiosity of the library's visitors.

Extend Wall Mounted Shelving System has been designed specifically to meet the unique needs of Silkeborg Library, with the library actively involved in the design process from start to finish. The integrated design includes a screen displaying dynamic content that naturally draws attention and creates vibrancy around the wall.



EXTEND DUO JUNGLA



EXTEND DUO "ESSENTIAL" WITH OAK VENEER BOTTOM PLATES AND GLAS WHITEBOARD

## FOCUS ON DEDICATED SPACES

Build and design spaces without compromising on aesthetics or functionality.

Extend shelving system is the perfect solution for creating dedicated zones, serving as a smart and easy room divider to establish meeting areas, cafeterias, quiet zones, team spaces, and more.



EXTEND WALL MOUNTED

# GO GREEN

Studies show that plants reduce stress, enhance focus, and boost overall well-being, creating a healthier and more productive workspace.

Plants naturally enhance air quality by absorbing CO<sub>2</sub> and releasing oxygen, creating a fresher and more balanced environment.



FLOWER BOX RECYCLED



EXTEND CEILING MOUNTED

# Iken



## CASE - ANKERLAND

Interior, crafted by Iken Design from Jork near Hamburg, for Trauma-Therapiezentrum Ankerland, a psychological support center for children and young people who have experienced traumatic experiences.

The interior design has also been recognized with an Iconic Award 2024.







## **ABOUT**

CATEGORY: Designing  
Consultation Rooms

LOCATION: Hamburg, Germany

CUSTOMER: Ankerland

DEALER / ARCHITECT: Iken  
Design GmbH

PRODUCENT & DESIGN: APTO

DESIGN: Extend Ceiling  
Mounted, Clamp flower Box and  
Round Table







## A PERSONAL SPACE WITH A “HIDDEN” OFFICE

The rooms feature minimalist, clean, and stunning Scandinavian designs that exude a sense of tranquillity and cosiness. The use of Extend Ceiling Mounted as a room divider adds a touch of intimacy and security to each space.

The design focuses on creating truly unique spaces within the space. A consultation room where young individuals can feel safe and not be treated as subjects of someone's work. And a discreetly hidden office area, ensuring it doesn't become the focal point during conversations with vulnerable individuals.

⊕ EXTEND ESPACO MOVEL





⊕ EXTEND ESPACO FIXO

⊕ ADAPT BOARD - BEIGE



EXTEND ESPACO MOVEL WITH WHEELS AND MODULES



EXTEND ESPACO MOVEL WITH WHEELS AND MODULES

## IN NEED FOR STORAGE?

Extend Espaco Movel with wheels is a popular choice because it meets many practical needs. It helps tidy up and store office clutter, creates separate spaces or provides privacy, and offers a flexible solution that can be easily moved around.

Modules like open shelving, closed compartments, or portable boxes can be added to suit your needs. We also recommend our custom plant boxes for a functional and decorative touch.



# CASE - HH INSTRU- MENTS

HH Instruments A/S is a small engineering and trading company that delivers large-scale solutions to the Danish industry. As a small business, they are incredibly flexible. This philosophy is also reflected in their choice of interior design.







## **ABOUT**

CATEGORY: Designing Office Space

LOCATION: Aarhus, Denmark

CUSTOMER: HH Instruments

DEALER / ARCHITECT: M Office, Aarhus

PRODUCENT & DESIGN: APTO

DESIGN: Extend Espaco with Wheels and Modules







## A FLEXIBLE LOUNGE AREA

HH Instruments has furnished one of their offices with a lounge area, complete with sofas, armchairs, and a space for table football and gatherings. The area is separated using Extend Espaco with wheels—a great choice to ensure that all elements in the lounge can be easily moved and adapted for social activities.

At the same time, the shelving unit provides additional storage and an opportunity to incorporate greenery into the office space.





⊕ FELT CABLE TRAY



CLAMP CABLE MANAGEMENT AND WHITEBOARD SIDEWALL



MULTI BOX "CARRY ON"

## HOW TO KEEP A TIDY AND CLEAN OFFICE

The desk is one of the most crucial elements in an office environment, and it can be utilized even more effectively by turning it into a helping hand for storing any potential clutter.

Both drawers and cable trays are mounted under the desk, without causing any inconvenience in day-to-day work.



OFFICE BOX DARK GREY AND BEIGE

# UPCYCLED MATERIAL

The felt material ensures excellent performance while promoting sustainability. It strikes the perfect balance between flexibility and rigidity, eliminating the need for additional fittings.

Our design is specifically optimized for flat packing, reducing CO2 emissions.



FELT DRAWER LARGE - DARK GREY



FELT DRAWER SLIM - BEIGE

# Third.space

## CASE - THIRD SPACE

Beautiful new architectural buildings - ready for occupancy. And the employees will truly feel comfortable in the new premises as investment has been made in each work area.







## **ABOUT**

CATEGORY: Desk spaces optimization

LOCATION: Silkeborg, Denmark

CUSTOMER: Anonymous company

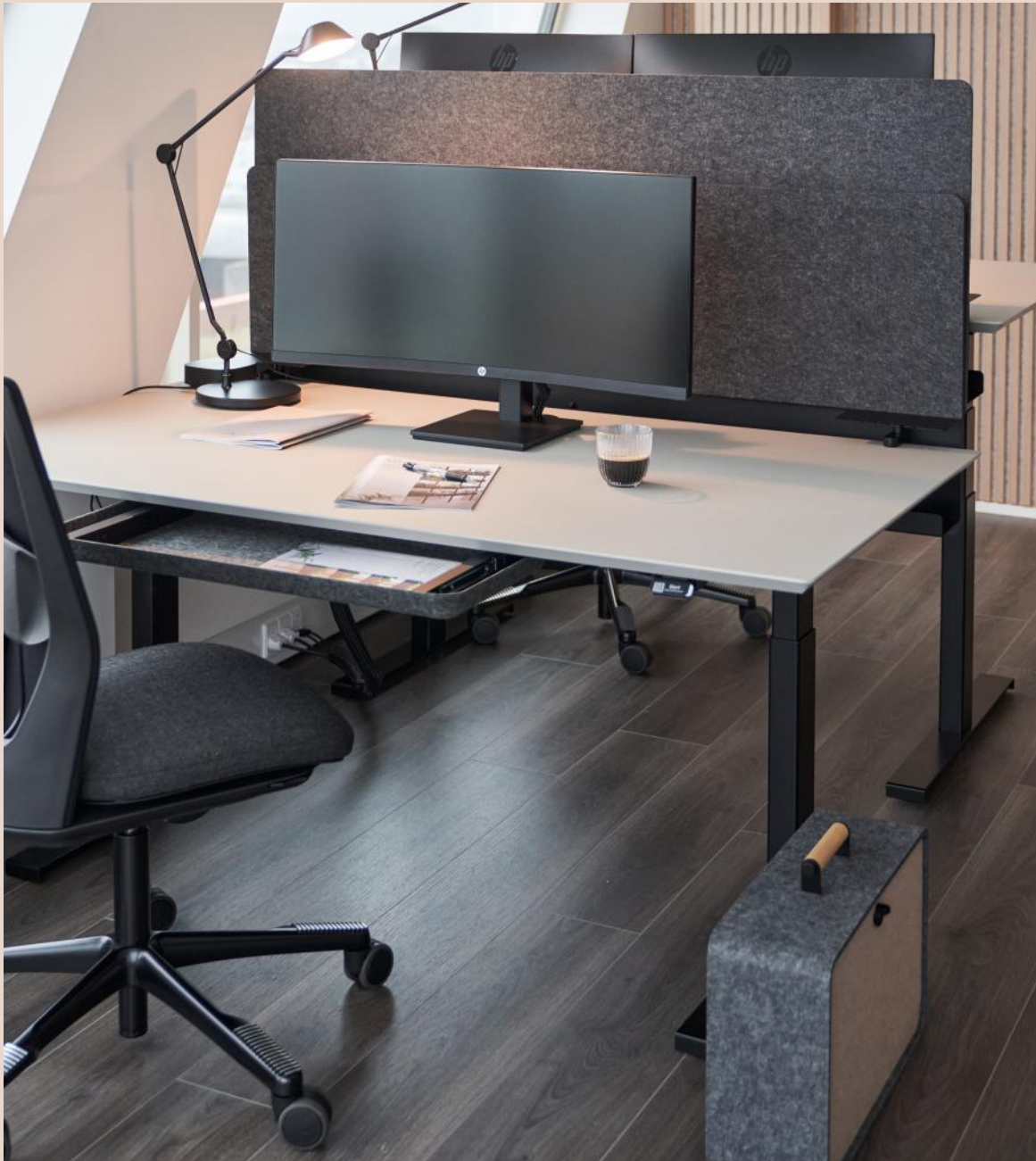
DEALER / ARCHITECT: Third Space

PRODUCENT & DESIGN: APTO

DESIGN: Felt Drawer, Felt Cable Tray & Clamp Cable Management







## ENVIRONMENTALLY CONSCIOUS

Third Space has incorporated felt into their design, using it for drawers, cable trays, and dividers. With its soft, tactile quality, the felt adds a sense of warmth and comfort to an otherwise minimalist office environment, its texture reminiscent of a cozy carpet.



⊕ FELT DRAWER SLIM - LIGHT GREY



⊕ ADAPT BOARD 1000 MM WITH MODULES



ADAPT BOARD 1300 MM. WITH MONITOR MODULES; SLIM SHELF AND LAPTOP HOLDER

# AS “CLEAN” AS IT CAN EVER GET

A monitor—or often multiple monitors—takes up space on the desk and collects dust. Why not make them float, allowing you to easily adjust their height and placement? It doesn't get more "clean desk" than that.

The Adapt Board is available in four sizes (1000, 1300, 1500, and 1700 mm), making it suitable for a variety of desk setups.





# CASE - JYSKE BANK

At the corner of Nyhavnsgade and Karolinelundsvej in Aalborg, Denmark, you will find the office building KANT, a new and attractive workspace for the Danish bank, Jyske Bank.







## ABOUT

CATEGORY: Interior design of office

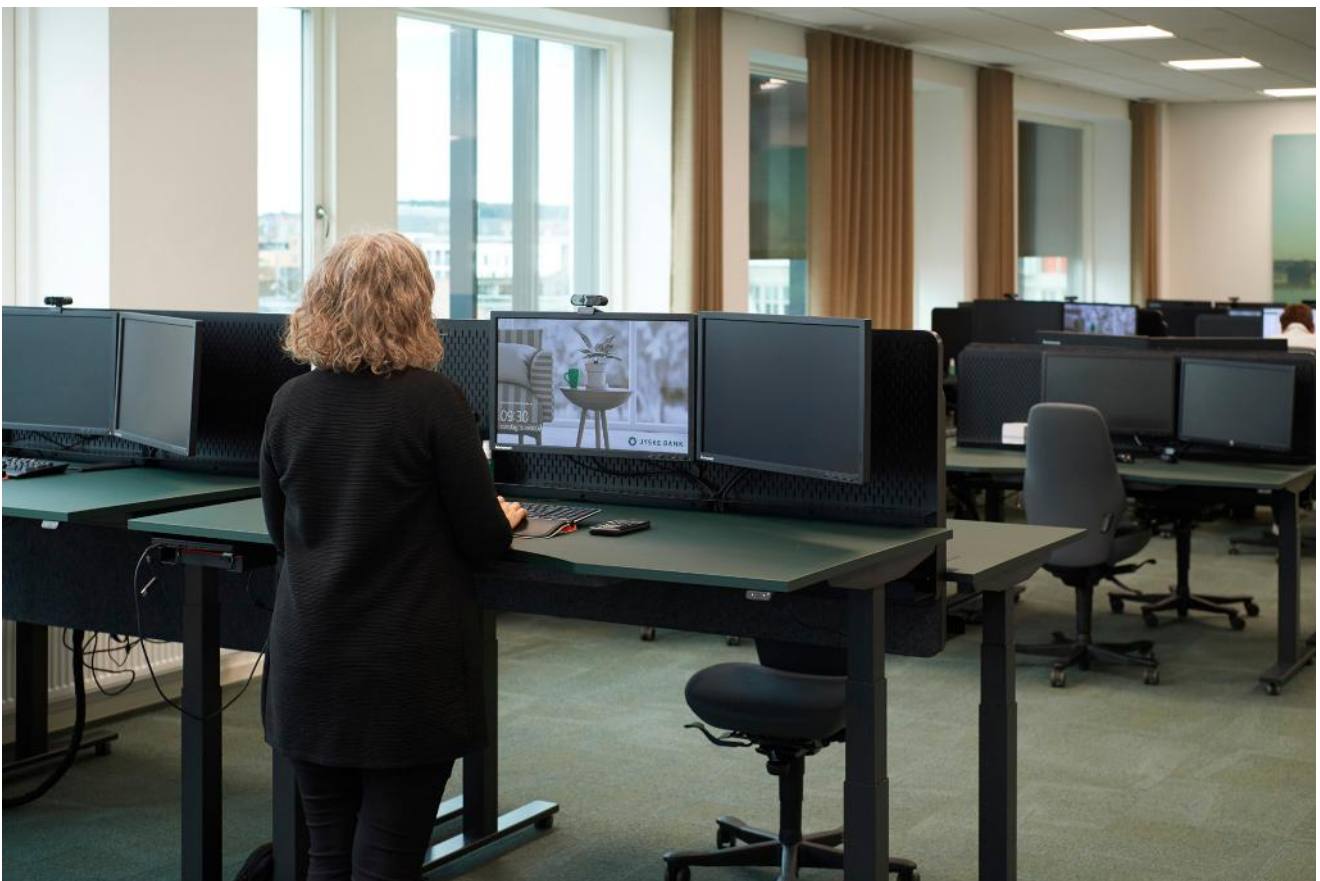
LOCATION: Aalborg, Denmark

CUSTOMER: JYSKE BANK

DEALER / ARCHITECT: Daarbak Design

PRODUCENT & DESIGN: APTO

DESIGN: Adapt Board & Felt Drawer Slim







## FURNISHING BASED ON VALUES

Due to the diversity of its customers, the physical environment plays a vital role in Jyske Bank's interactions with them. The concept of "KANT" is a defining feature of the interior design, where a mix of colors, shapes, and textures creates dynamism and gives the spaces a unique character.

This is particularly evident in the meeting rooms, each designed with distinct themes, atmospheres, and narratives. For employees, this allows them to choose a room tailored to the specific meeting format, fostering a comfortable and more personal connection with each customer.



EXTEND WALL MOUNTED - C.F. MØLLER ARCHITECTS SHOWROOM

# CUSTOM DESIGN

Our name, which means change and adaptation in Portuguese, reflects our vision. This principle is evident in all our collections, as well as in our pursuit of being a reliable partner that listens to our customers' needs. That's why we have over 25 years of experience in customizing design solutions that meet very specific desires.

*Do you have a truly unique interior design need? Get in touch, and we'd be happy to outline your ideas for you.*

[www.aptocollection.com](http://www.aptocollection.com) // + 45 86 81 23 75  
Hårup Skovvej 2, 8600 Silkeborg, Denmark

# COLORS AND MATERIAL

**Felt:** We aim to transform waste into valuable products, presenting an alternative to address global pollution. This is achieved through our felt products, comprised of products made from up to 70% recycled plastic.

**Colors:** We showcase some of our products in various colors. Please note that only Dark Grey, (with a few exceptions) is stock items. If you are interested in other colors, we encourage you to contact us directly.

# FIND DEALER

All our designs are available through our dealers around the world.  
Find an overview via the link below.

[FIND DEALER >>](#)

# APTO

[WWW.APTOCOLLECTION.DK](http://WWW.APTOCOLLECTION.DK)