

ARTfactory

PIED PIPER
THEATRE

INTO THE WOODS

Music and Lyrics by STEPHEN SONDHEIM
Book by JAMES LAPINE

OCTOBER 11-20

Wind River Theater at the ARTfactory

Directed by DAVID JOHNSON
Music Direction by MARIE CERVEN
Choreographed by MEGAN MARSHALL

NATIONAL
ENDOWMENT
for the
ARTS
arts.gov



Manassas





ART factory
ROOFTOP
PRODUCTIONS

MIRACLE

ON 34TH STREET

A Live Musical Radio Play

Adapted from the 1947 Lux Radio Broadcast by LANCE ARTHUR SMITH
Original songs and arrangements by JON LORENZ

PRESENTED BY MILLER TOYOTA

Nov. 29 - 7:30PM
Nov. 30 - 2PM & 7:30PM
Dec. 1 - 2PM
Dec. 5 - 7:30PM
Dec. 6 - 7:30PM
Dec. 7 - 2PM & 7:30PM
Dec. 8 - 2PM

Directed by DEB HANSEN
Music Direction by AHRYEL TINKER
Choreographed by KELLY DELAUNE
Wind River Theater at the ARTfactory
9419 Battle Street, Manassas, VA 20110

For tickets and info, visit our website at
www.virginiaartfactory.org/tickets or call us at 703.330.2787

Miracle on 34th Street: A Live Musical Radio Play is presented by special arrangement with Broadway Licensing Global. (www.broadwaylicensing.com) This project is supported, in part, by the Virginia Commission for the Arts, which receives support from the Virginia General Assembly and the National Endowment for the Arts, a federal agency.



ARTfactory Pied Piper Theatre presents

INTO THE WOODS

Music and Lyrics by STEPHEN SONDHEIM, Book by JAMES LAPINE

Originally Directed on Broadway by James Lapine, Orchestrations by Jonathan Tunick
Original Broadway production by Heidi Landesman, Rocco Landesman, Rick Steiner, M. Anthony Fisher, Frederic H. Mayerson, Jujamcyn Theaters

INTO THE WOODS is presented through special arrangement with Music Theatre International (MTI).
All authorized performance materials are also supplied by MTI. www.mtishows.com
This project is supported, in part, by the Virginia Commission for the Arts, which receives support from the Virginia General Assembly and the National Endowment for the Arts, a federal agency.

ARTFACTORY BOARD OF DIRECTORS

President Laura Mills
Immediate Past President Dr. James Carr
Secretary Jan Alten
Treasurer Andrea Oswald
Directors Cathy Croft, Gina Dabney, Rozlyn Giddens,
Debbie Jones, Pamela Lea, Charles Leopold, Gina Michak, Suhail Mir,
Megan Phillips, Ric Segovia, Sandra Surabian, Sarah Weaver

ARTFACTORY STAFF

Talya Conroy..... Executive Director
Kimberly Kemp..... Director of Theatre Arts
Ahyrel Tinker Education Director
Jordan Exum Gallery Director
Mieke Trudeau..... Director of Administration
Lissa Unrue..... Marketing Manager

Video and/or audio recording of this production is strictly prohibited.



ARTfactory's vision is "a community enriched through the creative arts." Our mission is to enrich the creative community by: engaging people of



all ages, celebrating diversity, fostering innovation, and cultivating collaboration and communication. ARTfactory welcomes participation by persons of all ages, races, physical abilities and national/ethnic origins. The support of the community through grants, private and corporate donations, memberships, and participation fees enables ARTfactory to

provide classes, rehearsals, dances, concerts, competitions, art exhibits, and community activities.

ARTfactory is located at 9419 Battle St. in Historic Downtown Manassas. Office hours are 10am-5pm, Tuesday through Saturday and Sundays from 12-5pm. If you would like to receive notice of future programs or would like to learn more about ARTfactory, please visit our website at VirginiaARTfactory.org or call (703) 330-2787.



9419 Battle Street, Manassas, VA 20110
www.virginiaartfactory.org



MANASSAS
SYMPHONY
ORCHESTRA

2024-2025 SEASON

Beautiful Music. Close to Home



SUNDAY, OCTOBER 27, 2024 | 3:30 PM

Prisms

Marcolivia Duo, Olivia Hajioff and Marc Ramirez:
Arthur Benjamin Romantic Fantasy for Violin & Viola

SATURDAY, DECEMBER 14, 2024 | 3:30 PM

Family Concert: Reveries

Levi Pardy, Trumpet
Christine Maxted, Soprano



SATURDAY, MARCH 1, 2025 | 7:30 PM

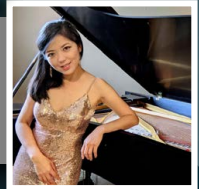
Expressions

Leonid Sushansky, Violin
Mendelssohn Violin Concerto

SATURDAY, MAY 3, 2025 | 7:30 PM

Fantasies

Catherine Lan, Piano
Brahms Piano Concerto No. 1



HYLTON PERFORMING ARTS CENTER

10960 GEORGE MASON CIRCLE | MANASSAS, VA 20110
ManassasSymphony.org

**JAMES VILLANI
MUSIC DIRECTOR**

PARTIALLY FUNDED
& SUPPORTED BY



Visit our website for all
upcoming shows & events



MUSICAL NUMBERS

Into the Woods	Company
Cinderella at the Grave	Cinderella, Cinderella's Mother
Hello, Little Girl	Wolf, Little Red Riding Hood
I Guess This is Goodbye.....	Baker, Jack, Baker's Wife
Maybe They're Magic	Baker, Baker's Wife
I Know Things Now	Little Red Riding Hood
A Very Nice Prince	Cinderella, Baker's Wife
First Midnight	Company
Giants in the Sky	Jack
Agony.....	Cinderella's Prince, Rapunzel's Prince
A Very Nice Prince (Reprise).....	Cinderella, Baker's Wife
It Takes Two	Baker, Baker's Wife
Second Midnight	Company
Stay With Me	Witch, Rapunzel
On the Steps of the Palace.....	Cinderella
Ever After	Narrator, Company

— INTERMISSION —

So Happy.....	Company
Agony Reprise.....	Cinderella's Prince, Rapunzel's Prince
Witch's Lament.....	Witch
Any Moment.....	Cinderella's Prince, Baker's Wife
Moments in the Woods.....	Baker's Wife
Your Fault.....	Jack, Little Red Riding Hood, Baker, Witch, Cinderella
Last Midnight.....	Witch
No More	Baker, Mysterious Man
No One is Alone.....	Cinderella, Little Red Riding Hood, Baker, Jack
Children Will Listen	Witch, Company

Wind River®

Handcrafted in Manassas Park

At Wind River®, our chimes are made in Virginia and inspired by the shores, mountains and valleys of the place we call home. They also reflect the spirit and landscapes of communities throughout the United States. From top to bottom, tubes to strikers—every Wind River® chime is made almost entirely from American-sourced materials.



Wind River®
800-345-2530
windriverchimes.com
service@windriverchimes.com

CAST OF CHARACTERS

Baker.....	Aiden Brennan
Baker's Wife.....	Erin Rigby
Cinderella.....	Chloe Steverson
Cinderella's Father.....	Logan Bintz
Cinderella's Mother.....	Glenna Moore
Cinderella's Prince.....	JJ Calavas
Florinda.....	Kaitlyn Byrby
Giant.....	Petra McMahan
Grandmother.....	Ellie Bowling
Jack.....	Vaughn Schweitzer
Jack's Mother.....	Maya Vilchik
Little Red Riding Hood.....	Isabella Lacson
Lucinda.....	Amelia Robertson
Milky White.....	Alexis Cottrell and Casey Williams
Mysterious Man.....	Anthony Palladino
Narrator.....	Deen Lateef
Rapunzel.....	Ysabella Nicastro
Rapunzel's Prince.....	Parker Bowling
Sleeping Beauty.....	Sara Lepore
Snow White.....	Kaylee Tilch
Stepmother.....	Juliet Durham
Steward.....	Betsy Woodward
Witch.....	Grace Mulligan
Wolf.....	Keaton Brennan

PRODUCTION STAFF

Director.....	David Johnson
Assistant Director.....	Franny Stec
Music Director.....	Marie Cerven
Choreographer.....	Megan Marshall
Stage Manager.....	Allie LeFon-Fogleson
Assistant Stage Manager.....	Wesley Pollington
Stage Crew.....	Nathan Castro
Technical Director.....	Ahryel Tinker
Sound Board Operator.....	Ahryel Tinker
Lighting Design.....	Kimberly Kemp
Properties.....	Becky Williams
Light Board Operator.....	Wesley Pollington
Costumer.....	Andrea Oswald
Publicity and Program.....	Lissa Unrue
ARTfactory Director of Theatre.....	Kimberly Kemp
Producer.....	Nicole Zezzo

World-Class Care in Northern Virginia

At UVA Health, we're committed to keeping you and your family healthy. Whether you need routine checkups or treatment for a serious condition, you'll find world-class care that's personalized to you — throughout Northern Virginia.

For the moment you need the best medical care, we're here.



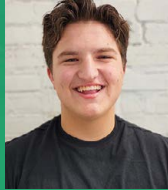
MEET THE CAST OF INTO THE WOODS



Logan Bintz



Eleanor Bowling



Parker Bowling



Alden Brennan



Keaton Brennan



Kaitlyn Byrde



JJ Calavas



Alexis Cottrell



Juliet Durham



Isabella Lacson



Dean Lateef



Sara Lapore



Petra McMahan



Glenna Moore



Grace Mulligan



Ysabella Nicastro



Anthony Palladino



Erin Rigby



Amelia Robertson



Vaughn Schweitzer



Chloe Steverson



Kaylee Tilch



Maya Vilchik



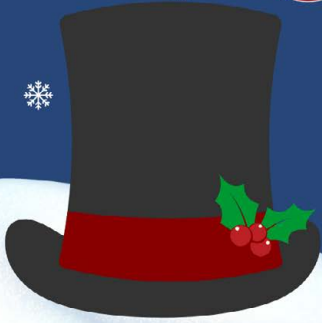
Casey Williams



Betsy Woodward

An ARTfactory Pied Piper Theatre Intensive

A CHRISTMAS CAROL



December 13-15
at the ARTfactory



www.virginiaartfactory.org/tickets

An Immersive Murder
Mystery Dinner Theatre

February 14, 15 & 16
at the ARTfactory

Presented by

ARTfactory

Who Killed Jolly Roger?

By Robert J. LeBlanc

Tickets may be
purchased at

www.virginiaartfactory.org



CAST BIOS (IN ALPHABETICAL ORDER)

Logan Bintz (Cinderella's Father) is a 9th grader at Patriot High school. This is his first show with PPT. He has had previous roles in *Agatha Rex*, and *Reach For The Stars*. He is so grateful to be a part of such a spectacular show with a very talented cast. He hopes you enjoy the woods!

Eleanor Bowling (Grandmother) is happy to be returning to Pied Piper Theater for another production. She hopes you enjoy the show!

Parker Bowling (Rapunzel's Prince) is a senior in the CFPA Theatre program at Colgan HS. This is his 8th PPT show, and has previously appeared in *CATS* (Munkustrap), *School of Rock* (Ned Schneebly), *Addams Family* (Gomez), and *Wizard of Oz* (Lion). He has also appeared in *Is he Dead* (Papa Leroux) and is preparing to perform in Colgan Theatre's *Dracula* (Dr. Sewer). He also appears in Colgan's Varsity Choir and has been part of Honors Choirs in the past.

Aiden Brennan (Baker) is in the 11th grade at Woodson High School where he captains the improv team and participates in chorus. This is his first performance with Pied Piper, and some previous productions include *1776* (Courier; Woodson), *Newsies Jr.* (Jack Kelly; Acting for Young People), *Beauty and the Beast Jr.* (Beast; AFYP), and *Shrek Jr.* (Lord Farquaad; Frost MS). He studies voice with Laurie Nelson and piano with Cindy Wallin. He sends a big thank you to the Pied Piper community, and hopes you enjoy your time in the woods!

Keaton Brennan (Wolf) is in the 8th grade at Frost Middle School where he enjoys participating in choir. He is excited for his first performance with Pied Piper. His previous favorite productions include *Newsies Jr.* (Jack Kelly; Acting for Young People), *Little Mermaid Jr.* (Sebastian; Mantua ES), *SpongeBob the Musical* (SpongeBob; AFYP), and *Beauty and the Beast Jr.* (Beast; AFYP). Keaton plays the piano and studies voice with Laurie Nelson. He would like to thank the whole Pied Piper community for a warm welcome. Don't stray off the path and enjoy the show!

Kaitlyn Byrde (Florinda) is excited to be a part of *Into the Woods* and the awesome cast! She has truly enjoyed the experience of being in PPT productions: *Anastasia*, *The Wizard of Oz*, *Guys and Dolls*, *The Addams Family* (Wednesday), *Descendants* (Mal), *School of Rock*, *Big Fish*, *Cats*, *Godspell* and *Oliver!* with Prince William Little Theatre. With a passion for singing, she is enjoying her new adventure as a 9th Grader at PVI High School. Kaitlyn would like to thank the cast, crew, production team, her parents, sister and Ms. Angela for the support! She hopes you enjoy the show!

JJ Calavas (Cinderella's Prince) is a Senior at Colgan High School where he takes Music Technology. He has been performing in theater since he was 9, and directing for a year. His favorite roles in previous shows include *School of Rock* (Dewey Finn), *Elf* (Michael Hobbs), *Big Fish* (Don Price), *Godspell* (Judas), *The Sound of Music* (Friedrich Von Trapp), and *Seussical* (JoJo). In his spare time you can find JJ skating, playing guitar and drums, producing music, going to concerts, thrifting clothes, and hanging out with friends. He would like to thank his family, his amazing girlfriend Juliet, and his wonderful Director David for all of the support. He is very excited and hopes you enjoy the show!

Alexis Cottrell (Milky White Puppeteer) is so incredibly excited to be a part of this wonderful cast and fun show! You may have recently seen her as Madame Thenardier in *Les Misérables* at FCT. Some of her other favorite roles include Hannah/Xavia (*Puffs*), Mrs. Mayor (*Seussical*), Lurch (*Addams Family*), Fred/Minstrel/Father (*Spamalot*), Dunya (*Anastasia*). Alexis is lead publicity manager of GVHS Theatre and ITS president at her school (go follow @gvhstheatre on tt and @gainesvillestage on insta!) make sure to come and support Gainesville HS theater! Alexis would like to thank her family, friends, and voice teacher Ms. Ivy for always supporting her! Live Laugh Love Milky White!

Juliet Durham (Stepmother) is a Junior at Colgan High School where she acts in Colgan CFPA theater. She has been dancing for 14 years and is very excited to be a part of this show! She

CAST BIOS (CONT. IN ALPHABETICAL ORDER)

assistant choreographed last summer's two intensives, *Addams Family* and *Descendants*, and choreographed the last fall show, *Finding Nemo Jr.* In the meantime, you can find Juliet dancing, writing music, playing guitar and bass, and acting. She has been in more than 12 Pied Piper productions starting back to when she was seven, including July in *Annie*, a featured dancer in *Big Fish*, MiMi in *Guys and Dolls* and many more! Juliet would like to thank her family and friends for their support, the amazing director and producer, the costumers and tech crew, the choreographer, her boyfriend, and everyone involved in making this production possible. Enjoy the show!

Isabella Lacson (Little Red Riding Hood) is a junior at Gainesville High School and is incredibly thankful and excited to be part of her first PPT show! She has done theater at GVHS since her freshman year and currently sings in Gainesville's chamber and concert choirs. Some shows she has been in include *Puffs* (Leanne), *Seussical* (Jojo), *Macbeth* (Banquo) and *Spamalot* (Patsy). She would like to thank her family, friends, and teachers (Mrs. Sheppard, Mrs. Maxted, Mrs. Rodriguez-Snellings, and Mrs. Glomb) for all of their support, and she hopes you enjoy the show!

Deen Lateef (Narrator) is a 13-year-old 8th grader at Benton Middle School where he participates in the orchestra. In his free time, he enjoys reading and outdoor activities. He has appeared in the prior Pied Piper Theater productions as Young Will in *Big Fish*, Lawrence in *School of Rock*, the mayor in *Wizard of Oz* and most recently as Squidward in the *SpongeBob Musical*. He thoroughly enjoys the camaraderie of the actors and the thrill of putting on a production. He thanks his family and the producers/directors, and he hopes you enjoy the show!

Sara Lepore (Sleeping Beauty) is very excited to be in this production of *Into The Woods*. She is a junior at Colgan High School in the CFPA theater program. She has recently been in PPT *Anastasia* (Dance ensemble) and GHS *Spamalot* (Sir Robin). She wants to thank her family and friends for always supporting her. She hopes you enjoy the show.

Petra McMahan (Giant) is a sophomore at Colgan High School where she is in the CFPA visual arts program and loves her theater classes. *Into the Woods* is her first PPT production, and musical she has ever been in, and she is so excited to be a part of the family! She sends a GIANT thank you to the cast, crew and all the amazing adults, and parents who make these shows possible.

Glenna Moore (Cinderella's mother) is a 10th grader at Fauquier high school. She has participated in PPT in *SpongeBob the Musical* (Mayor) and also participated in Rooftop Productions in the *Miscast Cabaret* as the wolf from *Into the Woods*. She has also done shows for her school and other theaters. She would like to thank the cast and crew for such an amazing experience. She hopes you enjoy going into the woods!

Grace Mulligan (Witch) is a homeschooled Senior who enjoys God, theatre, music, swim, animals, and more. Some of Grace's favorite previous productions include *The Little Mermaid Jr.* (Ariel), *Anne of Green Gables* (Diana), and her Covid show, *Annie Jr.* (Grace). Grace is extremely grateful for everyone who has made this incredible experience possible, and she hopes you enjoy the show. All the glory to God!

Ysabella Nicastro (Rapunzel) is a 9th grader at Colgan High School. She is in CFPA voice and was in the *Wizard of Oz* with Pied Piper. She studies voice with Mrs Glomb at Glombstudios. She sends a big thank you to the cast and crew who made the show what it is today.

Anthony Joseph Palladino (Mysterious Man) is a senior in high school and very excited to be a part of the show! His most recent role was in the PPT summer production *The Spongebob Musical* (Mr Krabs). Other performances and favorite roles include: *Scooby Doo* (Dr. Najib and The Mummy), FCT *Annie Jr.* (Rooster), FCT *Once Upon a Mattress* (King Sextimus), HTH *Oliver! Jr.* (Mr Bumble), FCT *Willy Wonka Jr.* (Grandpa Joe) and FCT *James and the Giant Peach*. Anthony would like to thank everyone working on *Into The Woods*, his new friends for a great time, as well as his parents and older siblings for driving him to and from rehearsals. He hopes you enjoy the show!

CAST BIOS (CONT. IN ALPHABETICAL ORDER)

Erin Rigby (Baker's Wife) is in her junior year at Colgan High School, she is in the CFPA Vocal Program. This is Erin's 12th Pied Piper show. Her favorite roles have included Morticia in *The Addams Family*, a Hot Box girl in *Guys and Dolls*, and Glinda in *Wizard of Oz*. When Erin is not on stage she is playing piano or dancing at Showcase Dance Studio. Erin wants to thank her parents for always supporting her and Pied Piper Theatre for putting on such amazing productions! She hopes you enjoy the show!!

Amelia Robertson (Lucinda) is a freshman at Battlefield High School and this is her 10th show with PPT. She most recently appeared in PPT's *Anastasia* as Anya and *Guys and Dolls* as a Hot Box Dancer. Amelia has also previously been in shows with PWLT, Rooftop, and FCT. She is so excited to be part of this show and would like to thank the entire production team! Enjoy the show!

Vaughn Schweitzer (Jack) is a Sophomore and attends Patriot High School where he participates in the Advanced Choir and in their Thespians program. This is Vaughn's first time in Pied Piper Theatre but not his first musical theater production. He has been involved in musicals such as Patriot High School's production of *The Lightning Thief* where he played Grover and Marsteller Middle School's production of *Into The Woods. Jr* where he also played Jack. In his free time, Vaughn loves to play Pickleball with his friends David, Ali, Bryn and Beckett. He also has always loved to sing. He is excited to see what new opportunities await for him in the future and would like to thank every cast and crew member involved for making him feel so welcome in his first ever community theater performance. Thank you for reading and enjoy the show!!

Chloe Steverson (Cinderella) is so excited to be making her Pied Piper debut in *Into The Woods!* Chloe goes to Lightridge High School and besides acting, singing, and dancing she is a competitive gymnast at Dulles Gymnastics. Some past shows include *Peter Pan (Peter Pan)*, *Ariel U/S*, *Alana*, and Tap dancing gull (*The Little Mermaid*), *Grace Ferrel (Annie)*, *Deborah Sue (Bye Bye Birdie)*, *Gingy*, *Young Fiona*, and *Peter Pan (Shrek)* and many more! She would like to thank the incredibly crazy insanely talented cast and team! As well as her parents for driving her 45 minutes to every rehearsal! All for Him!

Kaylee Tilch (Snow White) is a 10th grader at Colgan High School in the CFPA theater program. This is her very first auditioned PPT production. She is very grateful to be part of this incredible cast and for the wonderful crew and volunteers.

Maya Vilchik (Jack's Mother) is a junior at Colgan High School where she has been in productions like *Hadestown*, *Little Mermaid*, and others. This is Maya's second show with Pied Piper, her first being *Guys and Dolls* (Ensemble). She would like to give a big thank you to the cast and the crew who have been so wonderful to work with and have made this show an incredible experience.

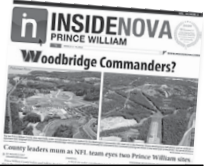
Casey Williams (Milky White Puppeteer) is a Junior in the CFPA theater program. Last summer, Casey attended Summer Residential Governor's School for Theatre. This is Casey's 8th pied piper production. She has recently appeared in *Guys and Dolls (Drunk)* and *Finding Nemo Jr (Peach)*. She was also recently seen as Dorine in *La Bête* at Colgan High School. Casey is thankful for this opportunity and hopes everyone will enjoy the show.

Betsy Woodward (Steward) is not a dog to a prince . . . she's an 8th grade student at Benton Middle School where she sings in the school choir and enjoys science and art. Past favorite roles with Pied Piper Theatre include: *Spongebob (Spongebob the Musical, Jr.)*, *Mrs. Anderson (The Best Christmas Pageant Ever)*, *Professor Ray (Finding Nemo, Jr.)*, *Gabe Brown (School of Rock)* and *The Mayor (Big Fish)*. She loves music, art, and swimming with the Wellington Dolphins Swim Team. She would like to thank her awesome parents, her okay brothers, and all the adults and kids who have worked so hard to make this show great!

CONNECTING YOUR COMMUNITY



IN PRINT



Weekly newspaper reaches more than 20,000 households throughout Prince William County with full coverage of local news, schools, sports, events and the arts.

ONLINE



Website reaches 800,000 unique visitors a month throughout the region; InsideNoVa Facebook page has more than 107,000 fans – and growing daily!



Subscribe to home delivery

Support local journalism by subscribing or donating today!

And visit InsideNoVa.com to sign up for our daily e-mail newsletter



Donate Online



1360 Old Bridge Road
Woodbridge, VA 22192
703-318-1386

ALSO PUBLISHING:



Farrell & Croft
A PROFESSIONAL CORPORATION

- ⊕ Family Law
- ⊕ Criminal Defense
- ⊕ Mediation
- ⊕ Personal Injury
- ⊕ Trusts
- ⊕ Wills
- ⊕ Estate Planning

For every challenge, F&C has a solution.



MEET THE PRODUCTION STAFF



Nathan Castro



Marie Cerven



David Johnson



Kimberly Kemp



Megan Marshall



Andrea Oswald



Wesley Pollington



Franny Stec



Ahryel Tinker



Becky Williams



Nicole Zezzo

MANASSAS BALLET THEATRE 2024 FALL SEASON

DRACULA

presented by

&

October 18-20
with the
Kim Reynolds Band

NUTCRACKER

presented by &

December 18-23
with the
Manassas Ballet Theatre Orchestra

at the **HYLTON PERFORMING ARTS CENTER**

Tickets: www.hyltoncenter.org • 703-993-7759
Info: manassasballet.org • (703) 257-1811

Manassas Ballet Theatre is funded in part by the National Endowment for the Arts, the Virginia Commission for the Arts, Prince William County, and the City of Manassas



TAKING THE FIRST STEP
**TOWARD RESOLVING
YOUR LEGAL CHALLENGE**

20+

YEARS OF INJURY, CRIMINAL
& FAMILY LAW EXPERIENCE

140+

5 STAR REVIEWS ON
GOOGLE REVIEWS

1,000+

CLIENTS & FAMILY
CASES HELPED

WE PROVIDE LEGAL ASSISTANCE IN THE FOLLOWING AREAS:

CRIMINAL LAW
FAMILY LAW & ADOPTION
PERSONAL INJURY
BUSINESS LAW

CONTACT US!



www.theirvinglawfirm.com



703-530-9001



Mike Garcia Construction INC.

4320 Prince William Parkway, Suite 113, Woodbridge, VA 22192

P: 703.897.0900 F: 703.897.5226

www.MikeGarcia.com

Since 1981, we've been a family owned and operated company dedicated to providing incomparable value in all our business endeavors. Our Custom Homes, Remodeling, and Commercial Development projects are designed to our client's specifications and built with the most durable, cost-effective, and quality materials available.

With our experience, we help you understand the process and show you the benefits of our philosophy: **"THINK LONG TERM"**

PRODUCTION STAFF BIOS (IN ALPHABETICAL ORDER)

Nathan Castro (Running Crew) Past roles include: Ensemble in *The SpongeBob Musical*, Ensemble in *Wizard of Oz*, Ben in *The Best Christmas Pageant Ever*, Nemo in *Finding Nemo*, and Groom Ancestor in *Addams Family*. Nate is a 7th grader at Manassas Park Middle School. He plays the flute, piano, percussion, and is learning to play the Oboe. In his free time, Nate likes to sketch, listen to music, and play games with his friends. He would like to thank his parents, siblings, grandparents, and his friends for always being there for him. He would like to give a special thanks to his sister for helping him and encouraging him to join theater!

Marie Cerven (Music Director) is thrilled to be a part of Anastasia. She earned her Bachelor and Master of Music Education degrees from the University of Illinois at Urbana-Champaign. Since then, she has taught choir in public school at all levels and performed and directed numerous music genres in a variety of settings. She would like to offer a special thanks to her family and friends for their support and to every single person with whom she has worked at the ARTfactory and at the Hylton Performing Arts Center. She hopes you all are inspired and encouraged today!

David Johnson (Director) has been involved with PPT since September, 2003 when he was 10 years old. For PPT, he has directed *Guys & Dolls*, *Big Fish*, *The Little Mermaid*, *Newsies*, *The Hunchback of Notre Dame*, and *Cinderella*. He assistant directed *Beauty and the Beast* and *Peter Pan*. Additionally, he directed two PPT summer intensives, *West Side Story* and *Godspell*. David is a professional actor in the DC-metro area. Theatre credits include *Heartland* (Pipeline Playwrights); *The Resistible Rise of Arturo Ui*, *The Pinter Rep*, *Submission*, and *Julius Caesar* (Scena Theatre); *The Second Shepherds Play* (Frederick Classical Ensemble); *The Ugly One* (Nu Sas); *In Love and Warcraft*. Television credits include *Evil Kin*; *American Titans*; *CopyCat Killers*. David is a Level One Vocal Yoga Trainer and Designated Lessac Kinesensics Practitioner. Additionally, David is a special education teacher for Prince William County Public Schools. He has a BFA in Theatre and a M. Ed. in Special Education from George Mason University.

Kimberly Kemp (Director of Theatre) has been acting, directing and educating in the surrounding theatre community for many years. Favorite roles include: Judy Shepherd, *The Laramie Project: Ten Years Later* (Dark Horse Theatre); Juliana, *The Other Place* (Project Ele); Kate, *All My Sons* (Stage Door Productions) and Rhetta, *Pump Boys and Dinettes* (Stage Door Productions). Favorite directing credits include *School of Rock*, *Seussical*, *When She Had Wings* and *Who Will Carry the Word*. Kimberly has dedicated her life to producing theatre that inspires education and understanding.

Allie Lefon-Fogleson (Stage Manager) is thrilled to be joining Pied Piper for the first time with *Into the Woods!* She discovered theatre in middle school when a recruited her to help backstage at the community theatre and fell in love. Allie graduated from James Madison University with a degree in Theatre specializing in stage management in 2019 and enjoys continuing to help make things happen behind the scenes. Much love to Simon, Tugger, and Misto for the support at home.

Megan Marshall (Choreographer) began studying dance at age four and carried her love of performance into musical theater not long after, leading to roles in a variety of school and community theater productions through college. Most of her recent work has been choreographing for the theater department and award-winning Decibelles show choir at Massaponax High School, where she also is the journalism, photography and creative writing teacher. She choreographed PPT's productions of *Moana Jr.*, *Godspell*, *Big Fish*, *Descendants* and *Guys and Dolls*, and was so excited to return to work on her favorite musical!

Andrea Oswald (Costumer) is excited to be costuming Pied Pier's production of *Into the Woods*. She has costumed at the ARTfactory for 18 years for Rooftop Productions and Pied Piper Theatre. Recent Rooftop shows include *A White Christmas*, *A Christmas Carole* and *The Odd Couple*. Some of the most fabulous Pied Piper shows include *Newsies*, *The Little Mermaid*, *Aladdin*, *Willy Wonk*

PRODUCTION STAFF BIOS (CONT. IN ALPHABETICAL ORDER)

& *The Chocolate Factory*, *SHReK*, *Mary Poppins*, *Beauty and the Beast*, *The Wizard of Oz*, and *Cinderella*. A local accountant during daylight hours; she is on the Board of Directors for The ARTfactory. She specializes in Historical attire for Victorian Era living history. She and her husband enjoy dancing Victorian Era dances with the CWDF Victorian Dance Ensemble. Enjoy the show.

Wesley Pollington (Assistant Stage Manager) is a senior at Colgan HS and is a part of the CFPA Voice program. This is Wesley's second Pied Piper production and they are very excited to be here! They have performed as part of the Ensemble for Colgan's production of *Chicago*, Pied Piper's *School of Rock* as Theo, U/S in Colgan's *Is He Dead?* as well as three senior directed One Acts. He is looking forward to doing as many shows as possible in the future, and would like to thank, their parents, grandparents, and friends for supporting and helping him through all of their shows!

Franny Stec (Assistant Director) is a senior at Osbourn Park High School and has been involved with Pied Piper Theatre since the age of 10. This is her 10th Pied Piper production, in addition to numerous classes, camps, and school productions. Some of her favorite past roles include Genie in PPT's *Aladdin Jr.* and Christopher in OPHS's *The Curious Incident of the Dog in the Night-time*, as well as Student Director for OPHS's *The SpongeBob Musical* and Student Assistant Director for PPT's *Guys and Dolls*. Franny is the President of OPHS's Theatre Council, is a member of the International Thespian Society, and is now serving her third year as Co-Chair of the OPHS Cappies Team. She has loved being a part of Pied Piper so much, and she is so incredibly grateful for the amazing opportunity to learn from David and the rest of the staff on *Into The Woods*. She would also like to thank her parents, friends, and sister Julie for always supporting her, and she hopes you enjoy the show!

Ahryel Tinker (Technical Director) has always enjoyed the technical aspects of *Into the Woods* since she watched her brother play the Baker in high school. Some of her favorite theatre experiences come from the technical magic she witnesses on stage, most memorably *Harry Potter and the Cursed Child* and *Wicked*. It is her absolute pleasure to bring technical magic to the stage with Pied Piper. Thank you so much Chris Calavas, Chip Rigby, Becky Williams and her team for their time and dedication to this show!

Becky Williams (Properties) has never been a props mistress before but she had a great team! She hopes you enjoy going *Into the Woods*!

Nicole Zezzo (Producer) is excited to be part of the production team for her third show at Pied Piper. She previously was the producer for *Wizard of Oz* and *Spongebob Jr.*, which she also costumed. When not busy in the theater, she is a tutor for Marshall Elementary school and mom to three great kids. *Into the Woods* is a longtime favorite musical and she is thrilled to get the opportunity to support this fantastic cast and crew.

THANK YOU TO OUR PARENT COMMITTEE VOLUNTEERS

Costumes: Jenn Durham, Michelle Mulligan, Greg Pletzke

Props: Lauren Brennan, Nancy Cottrell, Marie Lacson

Sets: Chris Calavas, Chip Rigby, Joel Schweitzer

Hospitality: Rachel Bintz, Marybeth Byrdy, Kara Palladino, Lauren Vilchik

House: Kacey Nicastro, Corey Nicastro, Alex Robertson, Jennifer Stevenson

Publicity: Mark and Meleana Moore, Kristi Tilch

Fundraising: Babur Lateef

Make-Up: Natalia McMahan

Backstage Monitors: Erin and Adam Bowling

ARTFACTORY DONORS

Current Fiscal Year 2023-24

Benefactors (\$25,000+)

Charles Leopold
City of Manassas
Commonwealth of Virginia
Prince William County
Wind River Chimes

Legacy (\$10,000-24,999)

Kitonis Family Charitable Foundation
UVA Health System
Virginia Commission for the Arts
National Endowment for the Arts
MICRON Technology

Guarantor (\$5,000-9,999)

JBT Thornton Trust
Kimberly & Erika Pearson Foundation

Sustainer (\$2,500-4,999)

Giving Circle
Miller Toyota
United Bank
Adam & Katherine Watson/
Bricks & Minifigs

Patron (\$1,000-2,499)

Churchill Downs
Deborah Dismuke
Evolution Printing*
Heritage Hunt Little Theatre
Iron Horse Family Foundation
Jo Ellen Benson
Kiwanis of Bull Run Inc.
Carl & Sally Lay
Microsoft
Prince William Chamber of Commerce

Primeau Mayer Financial

Contributor (\$500-999)

Anita Musick
Byrdy Family
David Moore*
Heritage Hunt Women's Organization
Jacqueline Smith, Clerk of the
Circuit Court
Jewell Technical Consulting Inc.
Jodi Flood
Jennifer Malos*
Nokesville Winery*
NOVEC
Prince William Photography Club
Jimmy & Talya Conroy
Sandy & Tim Surabian
Regency Women's Club
Robert Sweeney
United Way of the National
Capital Area
Vanderpool, Frostick & Nishanian PC

Supporter (\$250-499)

Matthew and Katherine Arcieri
Carol Hartt
Gina Michak
Manassas Rotary Club
Jane Zatkowsky
Kimberly Kemp*
Prince William Professional
Networkers Inc
Rene Dickerson
Samantha Shafer
Tang's Alterations
The Matthew's Group

We make every effort to recognize all of our supporters: If your name is incorrect or is omitted, please accept our apologies and inform us so that corrections can be made. *In-Kind Donation

Get the most out of the programming at the ARTfactory!

PARTICIPATE: Please consider becoming a member. Becoming a member of the ARTfactory provides perks such as:

- 15% discount on many classes
- Early "Member Only" ticket sales
- Special email notification of events
- Opportunity to attend special events

Memberships are available in Family, Individual, or Senior (65+) categories.

DONATE: You can make donations on our website by selecting the DONATE button on the homepage. Also, please remember the ARTfactory during your United Way or Combined Federal Campaigns.



United Way #8657

CFC #47832

Become a Member

Donate

*The Manassas Chorale
A Measure of Excellence*

THE
TWELVE
DAYS
OF
CHRISTMAS

Saturday, December 7, 2024, 7:30 pm
Hylton Performing Arts Center

Rebecca D. Verner, Director
Kristina Schenck, Accompanist
manassaschorale.org
info@manassaschorale.org

Hylton Center Box Office
1-888-945-2468
www.hyltoncenter.org
Tue.-Sat. 10-6pm





Creating and promoting opportunities that enrich the lives of people with disabilities.
We are committed to eliminating barriers, so everyone can fully participate in all aspects of their community.

LEARN MORE



ABOUT DIDLAKE

WE CREATE



OPPORTUNITIES

 didlake.org

 ask@didlake.org

 (703) 361-4195

Managed Solutions for Business, Retail and Public Education

Own a shopping center? Share space with other businesses? Do you know why your Wi-Fi is under performing? We have the knowledge to solve it. Our highly secure multi-tenant solutions help eliminate interference and deliver enterprise grade Wi-Fi as a Service to businesses and public schools.



Paliton Networks



Have multiple stores or offices that need security cameras or access control? Do you want to see and manage physical security at all your schools from central office? Need a solution that can track the movement of a specific person or distinguish between a human and an animal? We have the solution.

VA DCJS Licensed

<http://paliton.net/solutions>

E-Rate Certified

info@paliton.net

UNITED BANK IS PROUD TO SUPPORT THE ART FACTORY

With a history of excellence in service,
we remain a trusted financial partner in
our communities.



 [BankWithUnited.com](https://www.BankWithUnited.com) | Member FDIC



Trusted Guides to Your Financial Destination

We offer comprehensive wealth management services that start with your values and goals, develop a holistic plan, and maintain it over the years. We aim to provide exceptional value by making talented expertise available for your unique situation. You deserve the satisfaction of a well-designed financial strategy as a capstone to your professional success.

*You've navigated many life challenges.
Achieving and protecting your financial
independence is our mission as your
trusted financial guides.*



Let's Chat!

Scan the QR code above to
schedule your complimentary
30 minute personalized
Portfolio Audit & Risk Evaluation
with Wealth Planner, Tim Mayer.

- No commitment necessary.
- In-person, virtual or over the phone



7900 Sudley Road | Suite 806 | Manassas, Virginia 20109
P: (571) 252-7111 x 101 | E: Tim@PrimeauMayer.com | www.PrimeauMayer.com



FACTORY

OF FEAR

WHERE NIGHTMARES ARE FORGED

OCTOBER 25 & 26

EXPERIENCE THE ARTFACTORY LIKE NEVER BEFORE!

FRIDAY 6-11 PM, SATURDAY 11 AM-2 PM & 6-11 PM

THE ARTFACTORY, 9419 BATTLE STREET, MANASSAS

WWW.VIRGINIAARTFACTORY.ORG/TICKETS

TICKETS \$20 ONLINE, \$25 AT THE DOOR

PRESENTED BY **ART**factory

