



# LEAF

| Volume 1



**Lisa Faratro**  
Director of Environment and Sustainability  
CPI Group

---

# CONTENT

INTRODUCTION	3
.....	
OUR JOURNEY ... SO FAR	5
.....	
CARBON REPORTING	6
.....	
PLASTIC REDUCTION	8
.....	
WASTE	10
.....	
SUPPLY CHAIN	12
.....	
NEWS	14
.....	

**FIRSTLY** \_\_\_\_\_  
**THANK YOU**  
\_\_\_\_\_  
**FOR READING!**

Welcome to the first edition of Leaf, our sustainability and corporate responsibility newsletter.

In this newsletter it is our aim to show you the steps we have taken in our journey to become a fully sustainable print provider. We will also be outlining our environmental roadmap, in particular covering the 4 Rs - reduce, remove, recycle and re-use - these are the cornerstones of our environmental policy and feature in each of the areas we are covering in this first edition.

There is so much potential to improve the current status quo and I look forward to sharing our wins, and challenges with you through future editions of Leaf.

*Lisa*



**Lisa Faratro**

Director of Environment  
&  
Sustainability



A PASSION

---

FOR PRINTING

---

SINCE 1833



---

# OUR JOURNEY

## ... SO FAR

The CPI Group is fully certified in Quality Management (ISO9001) and Environmental Management (ISO14001) across all of our UK sites. ISO is an internationally recognised standard and CPI has held both accreditations for over ten years. These standards require CPI to have targets and policies to ensure all sites are working to the same goals allowing us to target the areas most important to us and our customers. We use external auditing bodies who ensure all sites are achieving the minimum standard we have set and help us to continually evolve as a company committed to ongoing environmental improvements.

In the last year we have introduced two key new roles, **Director of Environment & Sustainability** and **Group Compliance & Quality Manager**. These appointments highlight the importance CPI places on our Corporate Social Responsibility covering Environmental and Quality Management, as well as that of our full supply chain, encompassing both customers and suppliers.



### Plastic Free Award

---

Our efforts to reduce single-use plastic at our Eastbourne site has been recognised by the organisation 'Surfers Against Sewage', an environmental charity tackling plastic pollution.



### Zero to Landfill

---

One business objective is to achieve zero to landfill. We work very closely with our partners to identify and recycle as many waste streams as possible.

# CARBON REPORTING

## In facts and numbers

In 2019 the UK Government introduced a requirement for large companies\* to report on energy consumption where their business consumes more than 40,000 kwh of energy. This reporting is designed to increase awareness of energy usage and costs within organisations, providing a framework to adopt energy efficiency measures and to help reduce the impact on climate change. The reporting framework is know as Streamlined Energy and Carbon reporting (SECR). SECR focuses on Scope 1 and Scope 2 emissions:

\*A large company has; - Turnover exceeding £36 million \ Balance sheet assets more than £18 million \ More than 250 employees



### SCOPE 1 EMISSIONS

All Direct Emissions from the activities under our control. Including fuel combustion on site such as gas boilers, fleet vehicles and air-conditioning leaks.



### SCOPE 2 EMISSIONS

Indirect Emissions from electricity purchased and used. Emissions are created during the production of the energy and eventually used by us.



### SCOPE 3 EMISSIONS

All Other Indirect Emissions from activities occurring from sources that we do not own or control. This covers emissions associated with business travel, procurement, waste and water.

<b>CPI Group (UK) LTD emissions for the period 1st April 19 to end of March 20</b>	
SCOPE 1 EMISSIONS/ TCO2E	896
SCOPE 2 EMISSIONS/ TCO2E	5,873
TOTAL GROSS SCOPE 1 & SCOPE 2 EMISSIONS/ TCO2E	6,769



In April 2020 we made the decision to no longer participate in a Carbon offsetting scheme at our CPI Colour site, as a responsible business it is more important for us to focus first on making the changes needed to reduce our overall energy consumption and also our scope 1 and scope 2 carbon emissions. We may revisit carbon offsetting in the future once we have achieved all the reductions we can.

As part of this focus we are pleased to report that from October 2020 CPI Group UK has moved to 100% renewable electricity, this is a significant step forward and will help to achieve further reductions in Scope 2 emissions during this current financial year.

This year we have also invested in a number of projects to reduce our overall energy consumption, they include; air leak detection, LED lighting, energy management, temperature reductions, valve and pipe insulation.

It is important for us to continually report our energy consumption relating to our actual production volumes. This has been particularly relevant this year with the Coronavirus pandemic as our production volumes are not the same at any of our plants (some increased, some reduced) and we need to ensure our reporting is clear to all of our customers. In the next edition of Leaf we will explain more about the relationship between energy consumption and paper usage, along with the specific reduction targets for both waste materials and energy use.



**1.5  
Tonnes**

**For each tonne of plastic recycled 1.5 tonnes of carbon is saved.**



**1500  
Football pitches**

**'European forests expand by more than 1500 football pitches every day.'**

**- World Economic Forum**

## PLASTIC REDUCTION

CPI is committed to the Packaging Waste Scheme in the UK, we report on any packaging we consume within CPI and have a responsibility for the onward declaration of that packaging. We are working with our suppliers and customers to reduce the packaging waste wherever possible.

Plastic film is used in volume on our high speed production binding lines, it is a light weight product and is fully recyclable when disposed of in the correct waste streams.

We are working with our current supplier to reduce the weight of the shrinkwrap we use across the group. We have already reduced a large volume of tonnage at one of our plants by moving from 40 micron to 35 micron shrinkwrap – since July this has saved 5.5 tonnes of plastic which is over 5% of the volume we purchase. This trial will be extended to all UK sites in January 2021.





---

The trial shrinkwrap is clear plastic with a UV inhibitor to protect stock from UV rays. The benefit of using clear plastic is that it can be recycled into any item (meaning less sorting and easier processing), whereas coloured shrinkwrap can only be recycled into a product darker than the original plastic colour. Our current shrinkwrap is predominantly white which can only be recycled into white or coloured products.

If the trial is successful this will reduce our plastic usage by over 10% in 2021/22. The outcome of the trial will be reported in the next edition of Leaf, however prior to implementing any changes we will be communicating with both customer and publisher distribution hubs to ensure due diligence is completed.



## WASTE

CPI works with a number of certified waste providers, the majority of the waste from our sites is paper based, which is sorted at site and then collected.

The sorting of waste is extremely important to ensure loads are not contaminated, each paper type is recycled into different products, some examples are below:

### Books

- Pulped at a packaging mill and recycled into Corrugated material

### Binders trim

- Pulped at a newsprint plant and recycled into paper for newspapers and magazine.

### Office waste

- Pulped at tissue mills and used in hygiene products

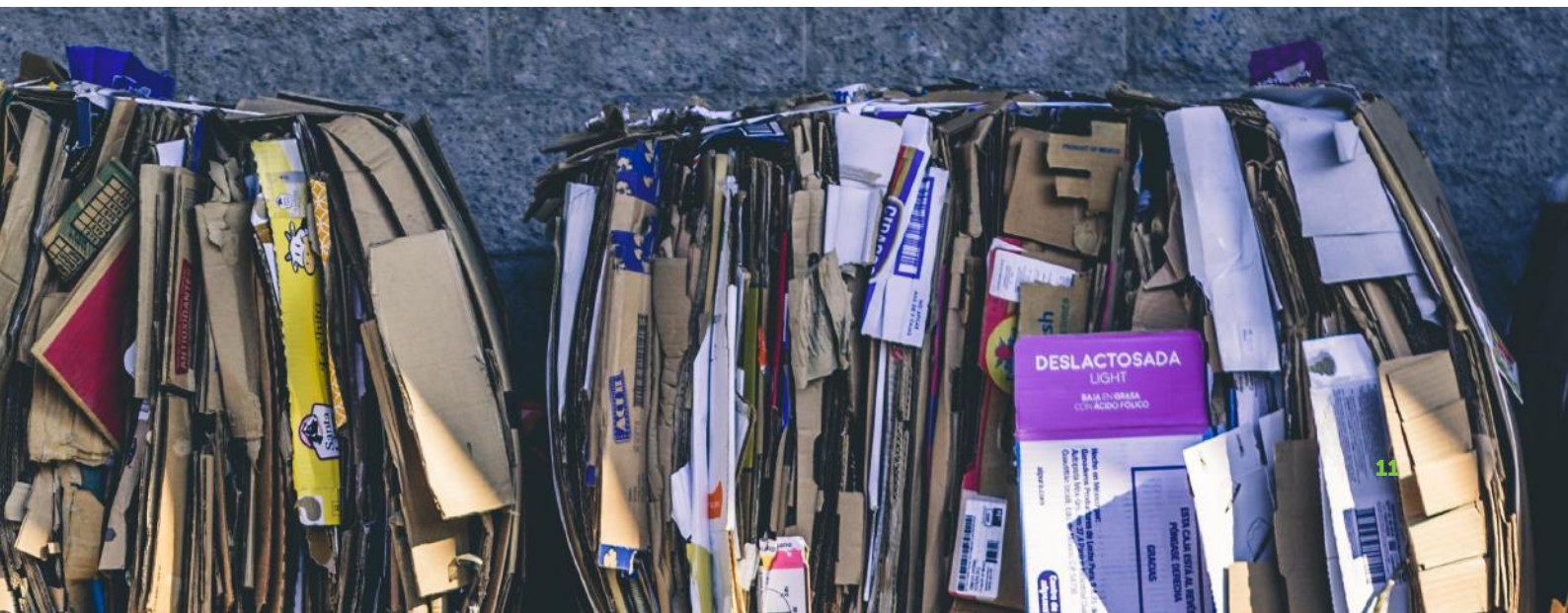
All other waste materials are also recycled through our approved suppliers and can be made into products such as drain pipes and chippings for golf courses.



---

The key for CPI is to focus initially on reducing our waste therefore each site has a reduction target covering the make ready process and running waste. This is being achieved through machine efficiencies, investment, workflow changes and operating procedures.

Measures for waste, and the success of any reduction, is more difficult to quantify as it is dependent upon the complexity of the product, as well as the size and weight of paper used however we are working on a way to identify an overall percentage measure for CPI. This will be completed by the time the next newsletter is published, it will also show the total volume of waste across the group as well as the different recycling streams used.



## SUPPLY CHAIN

As part of our **corporate responsibility**, the supply chain is integral to CPI being a sustainable print provider. We are currently auditing our full supply chain to ensure our purchasing decisions, as well as being based on service and cost, are aligned to our Group policies.

By working closely with our suppliers we share information and ensure that we are achieving our joint goals.

The audit of our suppliers forms part of our commitment to Sedex. Sedex is one of the world's leading ethical trade membership organisation, working with businesses to improve working conditions in global supply chains.

SMETA 4 pillar audits are conducted by an external auditing body covering:

LABOUR  
STANDARDS



ENVIRONMENTAL  
ASSESSMENT



HEALTH AND  
SAFETY



BUSINESS  
ETHICS



Our Chatham and Croydon sites were audited in the 2019/20, we have plans to audit our remaining sites during 2021 and thereafter are committed to audits every 2 years across the UK.



## NEWS



### FSC AUDIT

We have successfully completed our FSC 3rd and 4th year audits across most of our sites. We are working with our suppliers to update our database to encompass species information which is now a requirement for FSC products



### CELLULOSE LAMINATE

We are continuing to trial a cellulose laminate – as yet, this has not proven to be successful, however we are working with the supplier to see if we can find a solution for our manufacturing process in the UK.



### NEW MATERIALS

We continually work with our suppliers to offer innovative and environmentally friendly materials. To that end we are now in a position to offer anti-bacterial lamination (gloss or matt), as well as anti-bacterial machine finished coatings for litho covers.



### RECYCLED WIBALIN

Launched early this year with a range of colours available.



### NEW PAPERS

There are some interesting new papers coming into the market this year, mainly for marketing or packaging products, these are made from different types of pulp (not wood), such as sugar beet.



### 100% RENEWABLE

CPI Iberica (Black Print) are proud to have received a 100% green energy certificate. This certificate guarantees that the energy we use at CPI Iberica (Black Print) is of 100% renewable origin, thus contributing to the protection of the environment.



---

## NEXT EDITION



Our next edition of Leaf will be published in the Summer of 2021, we will be focussing on Waste Management targets as well as providing more up to date information on our carbon reporting.

We will also be using this newsletter to ensure our customers are up to date with our certifications, appending any new documentation to ensure you always have the correct, and most up to date, information from us.

We hope you have found our first edition of Leaf informative. We would love to receive feedback from you to ensure we are covering all of the subjects you are interested in. By working together, ensuring we understand your goals and targets, we can all travel faster along the road to a more sustainable future.

If there are any topics you would like us to cover in future editions of Leaf please do let us know.

[Leaf@cpi-print.co.uk](mailto:Leaf@cpi-print.co.uk)

# SIMPLE FACTS ABOUT US

**160  
Million**



**250+**



**FSC®**





A PASSION FOR \_\_\_\_\_  
**SUSTAINABLE**  
\_\_\_\_\_ PRINTING

# CPI GROUP

**Lisa Faratro**

Director of Environment and Sustainability

CPI Group

[Leaf@dpi-print.co.uk](mailto:Leaf@dpi-print.co.uk)

[dpi-print.co.uk](http://dpi-print.co.uk)