

THE FUTURE OF BUILDING

The way forward is together.

01 ROOTS	04
FOUNDING STORY	06
OUR VISION & MISSION	08
THE CREE SOLUTION	10
02 SYSTEM	14
PROCESS	15
TIMBER-HYBRID SYSTEM	16
BENEFITS	18
PRODUCT SOLUTIONS	20
SUSTAINABILITY	26
03 PLATFORM	28
04 NETWORK	30
SUCCESS STORIES	31
GLOBAL NETWORK	32
PARTNERSHIPS	34
LICENSE PARTNERS	36
PRODUCTS & SERVICES PARTNERS	38
CREATORS	40
05 PROJECTS	42

Roots

01

Scan here to
see what CREE
is all about:



We need to change the way we build.

Despite all the progress and development in our modern world, the construction industry is still polluting, inefficient, and fragmented.

—
CREE is dedicated to sustainable and healthy buildings.

Each month, the equivalent of New York City is built, and global building floor area will double by 2060 due to urban growth.¹

That is a staggering number of resources that need to come from somewhere. At the same time, the construction industry is responsible for 40% of the planet's CO₂ emissions; the use of concrete, steel, and aluminum in the built environment alone accounts for 23%.² Clearly, we need to change the way we build and reappraise the materials and resources

needed - and do so in a transparent way which avoids greenwashing.

Every new building designed and built in a conventional way is a lost opportunity to store carbon and reduce emissions.

¹ Source: *International Institute for Sustainable Development, 2020*, <https://www.iisd.org/articles/buildings-construction-sleeping-giant-climate> | ² Source: *Global ABS, Global Status Report 2017*, <https://architecture2030.org/why-the-building-sector/>

The future of building has begun.

FOUNDING STORY

Back in 2008, we started to look for alternatives in order to fundamentally change how buildings are built. We initiated a research project to develop a repeatable system for prefabricated, resource- and energy-efficient, large-scale timber-hybrid buildings.

SUSTAINABLE, COST-EFFICIENT, AND SCALABLE: CREE BUILDINGS WAS BORN.

As a direct result of feasibility research, CREE was founded in 2010 by Hubert Rhomberg. Surrounded by nature in our home region of Austria, we were convinced there was a more ecological and efficient way to build. Through collaboration with various construction pioneers, the “hardware” for our timber-hybrid buildings - the CREE building solution - was created and the first CREE building, LifeCycle Tower ONE, was built in 2012 in Dornbirn, Austria.

Following additional CREE Projects in the subsequent years, the system has constantly improved through repetition and ever-smarter manufacturing processes.

In 2016 we transformed into a construction technology company and launched an international construction collective that has since independently erected more CREE buildings across Europe, Asia, and North America. This global expansion has continued along with software connecting our network, local suppliers, and manufacturers, cascading knowledge and innovation to all stakeholders.

Today, we are an international construction collective for regenerative building solutions.

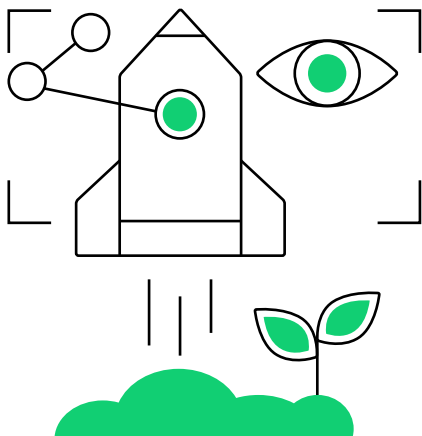
With our unique timber-hybrid system, our qualified partners build fast and sustainably around the globe. Together, we are revolutionizing the construction industry.





OUR VISION

**Together, we
are building a
future defined
by **knowledge
sharing,
collaboration,
and respect** for
nature and its
resources.**



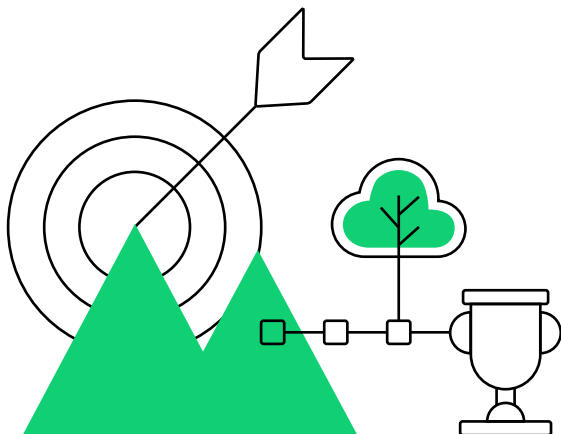
The rules of success are being rewritten: sustainability is not just an asset, but will be the founding principle in the construction industry.

We realize that inclusion and collaboration does not slow us down but is rather the only way for meaningful progress. We consider our own happiness and health alongside that of nature.



OUR MISSION

We are on a mission to make our expanding knowledge and resource network available to all forward-thinking minds invested in building a greener future.



We strive to facilitate the CREE System in as many new buildings as possible to promote a new paradigm in green construction.

Together, we can truly build a better world.



The CREE Solution

Sustainable,
cost-efficient,
and scalable.

WHY TIMBER-HYBRID?

With a smart and lean material mix, we combine the best properties of timber, concrete, and steel into our revolutionary timber-hybrid building solution. Compared to all-timber construction, timber-hybrid offers better physical performance in terms of vibration, deflection, sound insulation, fire resistance, and compartmentalization, as well as benefits regarding weather and water protection during construction and operative use.

By establishing a local ecosystem of suppliers and contractors, we enable timber as an urban construction material without requiring shipment from a central location, by empowering companies and their supply chains to build with our industrialized approach. This way, we set the foundations for a new urban architecture with reduced life-cycle costs, high building value retention, top comfort levels, and compliance with all current safety requirements.

—
One building system for various asset classes – tailored for your market needs.




The CREE Way

Leading to better buildings with an industrialized approach combined with local supply chains.


SUSTAINABLE TIMBER-HYBRID BUILDINGS

50% reduction of embodied carbon emissions from structural building materials


Life-cycle approach with flexible floor arrangement



Less waste and pollution, and circular approach to resources




50% reduction of operational carbon emissions during the life cycle of a building



Efficient collaboration between all stakeholders

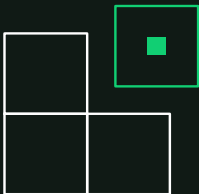
Shared expertise with a global network

Project insights



Increased visibility

SCALABLE PLATFORM

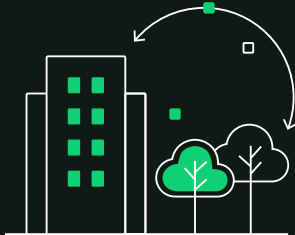


Industrialized building production: fast, reliable, and repeatable results

25% cost and 50% time savings compared to conventional processes


Off-site modular prefabrication, digital twin, and BIM

Computational, technological, and tested procedures to deliver a quality product on time and on budget




EFFICIENT MODULAR PREFABRICATION


The Traditional Way




Polluting and unsustainable



Unproductive and wasteful



Fragmented and non-transparent



Slow to innovate

“CREE goes beyond
and embraces a con
regenerative approach
new paradigm in gre
using renewable ma
disruptive processe
talking but doing, no
but collaborating an
a future we all want

HUBERT RHOMBERG
CEO & Founder of CREE Buildings



mere sustainability
comprehensively
ach. This is truly a
green construction,
materials and scalable
s. It's not about
not about competing
and together building
to live in.”

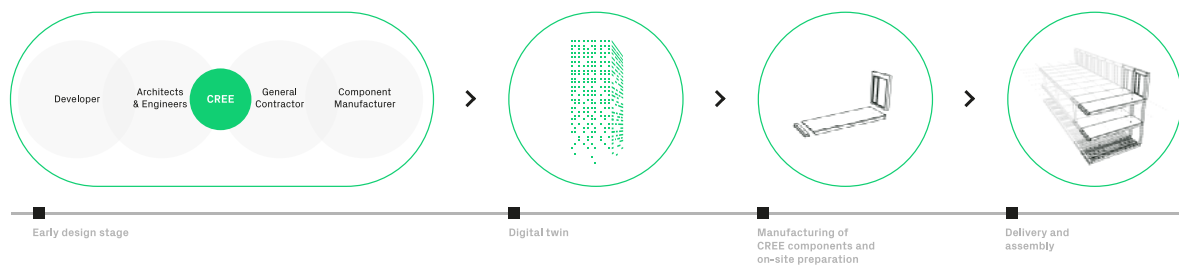
System

02

The CREE Process

We believe early stakeholder involvement is critical.

Integrated project delivery requires the involvement of all stakeholders from the very beginning. This positively disrupts usual procedures, removes bottlenecks and facilitates early decisions in the planning process. The benefits quickly become clear: information flow is streamlined, and fewer resources are wasted thanks to material optimization and simulated workflows in the digital twin.



The efficient project delivery process continues through the construction phases, thanks to off-site industrial prefabrication of building components and their assembly on site. Complexity reduction (e.g., fewer individual component types) results in simplified logistics, more accurate order forecasts, and manageable warehousing for manufacturers.

CREE is a committed yet neutral ally throughout, ensuring all key stakeholders gain exactly the head start they need and are focused on delivering an

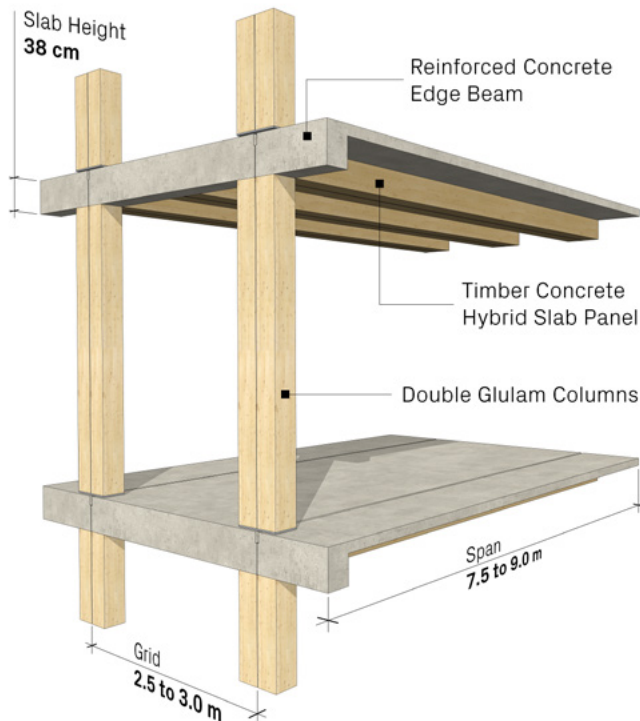
exceptionally valuable product. We also communicate constantly with manufacturers to check that all components are produced close to the project site, thus minimizing climate footprints.

With all stakeholders overseen by CREE, transparency breeds trust and continuous improvement. This collaborative strategy is proven to result in higher quality and greater speed, cost savings, and a foundation for successful long-term cooperation.

Early engagement of CREE and all stakeholders in the design and building process leads to workflow efficiencies and optimized resource use.

Timber-Hybrid System

CREE Projects are resource- and energy-efficient, large-scale timber-hybrid buildings that are assembled on site, use renewable resources, have circular life cycles, and provide a healthy and more productive indoor environment.



Our building solution enables developers, contractors, and architects and engineers to meet the exacting construction standards of today and tomorrow. Explore the features of our proven, repeatable, and constantly evolving CREE System, and discover the applications most relevant for you.

THE CREE SYSTEM: FUTURE-PROOF AND RESOURCE-EFFICIENT

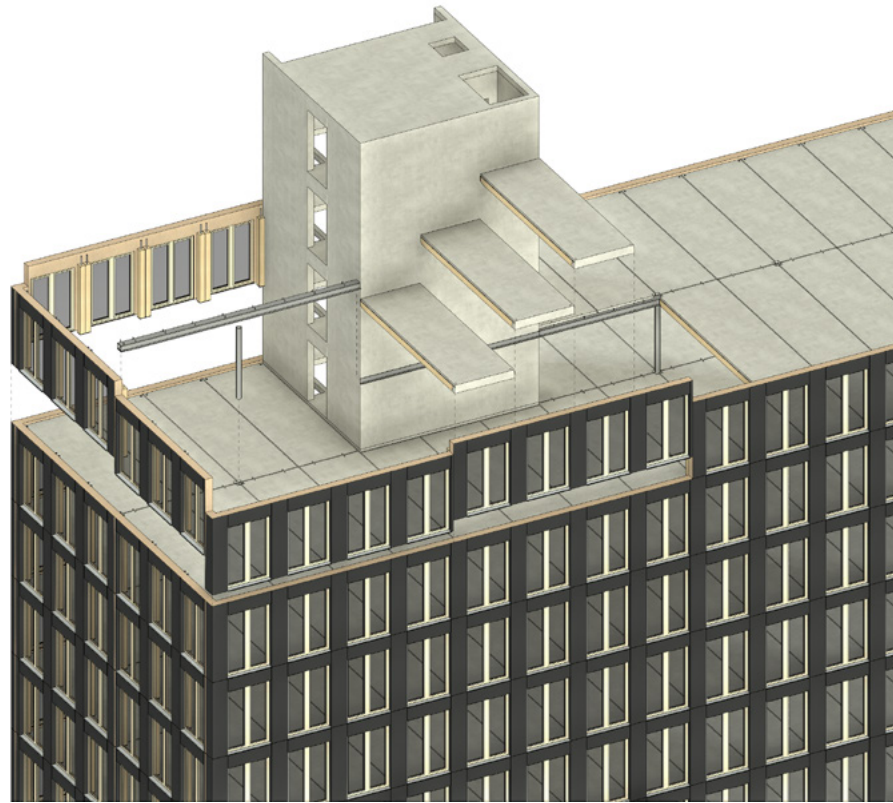
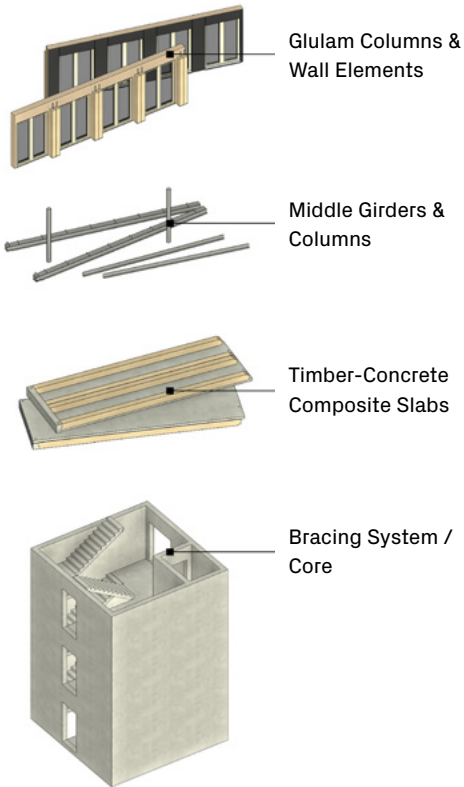
Our collaborative, modular, and resource-focused approach empowers our partners to create the highest quality commercial, educational, residential, student housing, and hotel buildings of 3,000 m² or more with local resources quickly, reliably, and with low risk. With its capacity to evolve and adapt, this inherently flexible system ensures future-fit buildings with the longest possible life cycles.

INNOVATIVE GRIDS

The ceiling of each story in a CREE building consists of a grid of prefabricated timber-concrete composite slab panels. The total dimensions of the building consist of multiple slabs in each direction. Various basic grids are available, with customizations possible in consultation with CREE. The width of the ribbed or flat slab panel can vary from 2.50 m to 3.00 m, whereas the length of the panel is ideally two or three times the width.



4 Key Structural Elements



Scan here for an eye-catching timelapse video of the CREE System in action:



PRINCIPLES OF THE CREE SYSTEM

- Off-site prefabrication
- Exposed structural wood
- Fast assembly of fully enclosed spaces
- Less material, better performance
- Sustainable and future-proof
- Systematic, modular, repeatable

Benefits of the CREE System

Efficient, sustainable, viable - and constantly improving.

01

01 | HIGHLY SUSTAINABLE AND RESOURCE-EFFICIENT

The CREE timber-hybrid system is inherently sustainable, uses less materials, and incorporates renewable resources where possible.



02 | QUALITY, SCHEDULE, AND COST CERTAINTY

Cost and schedule predictability are ensured early on. As the project progresses all project participants can view planning changes in real time using the digital twin. This allows for a high standard of quality, utmost efficiency, and rapid estimation of costs, time, carbon footprint, and regulatory compliance.

03 | 400-500 M² OF ENCLOSED FLOOR SPACE PER DAY

The use of completely prefabricated and modular components makes it possible to construct 400–500 m² of enclosed, weatherproof floor space with 6 workers per day - roughly five times the pace of conventional on-site concrete construction.

04 | FREEDOM OF INTERIOR AND FAÇADE DESIGN

The CREE System offers an extraordinary degree of versatility. Interior spaces are highly customizable because there is no need for load-bearing interior walls. Architects are therefore free to create floorspaces with outstanding form and functionality.

04





05

05 | OFF-SITE PRODUCTION IMPROVES ACCURACY AND QUALITY

Our innovative method of prefabricated slab and wall elements boosts labor productivity. Crucially, the building is assembled on-site, rather than constructed. The lightness of the timber-hybrid composite and the high level of prefabrication provide further boosts to in-time transportation and delivery.



06

06 | HIGHER PRODUCTIVITY WITH FEWER WORKERS

All core and shell components are prefabricated at off-site facilities, allowing for better health, hygiene, and safety monitoring on building sites. For workers, this means less-populated and inherently safer sites.

07 | HEALTHY INDOOR ENVIRONMENT

End users appreciate the biophilic atmosphere provided by the exposed wood elements and open functional spaces characteristic of a healthy office building. The natural feel of the interiors of a CREE building contribute to a healthy working or living environment.

08 | ENERGY EFFICIENCY AND REDUCED LIFE-CYCLE COST

The life-cycle cost of a CREE building is remarkably low. The innovative cooling and heating TABS system, together with smart lighting and passive design strategies, reduces energy consumption and minimizes operational and maintenance costs, resulting in global cost savings of up to 59%.

07

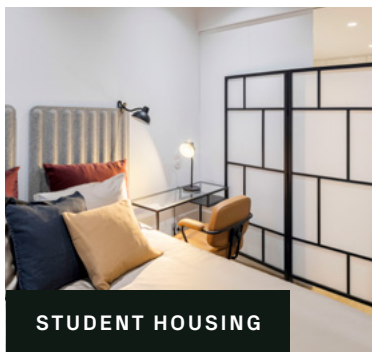
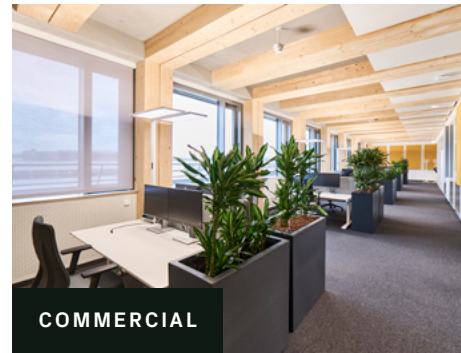


SYSTEM 19

PRODUCT SOLUTIONS

Tailored for Your Needs

Tailored for various asset classes, our product solutions address the challenges and opportunities of specific project types. Built on our proven building system, each solution combines sustainability, efficiency, and cutting-edge technology to elevate your construction projects to the next level.



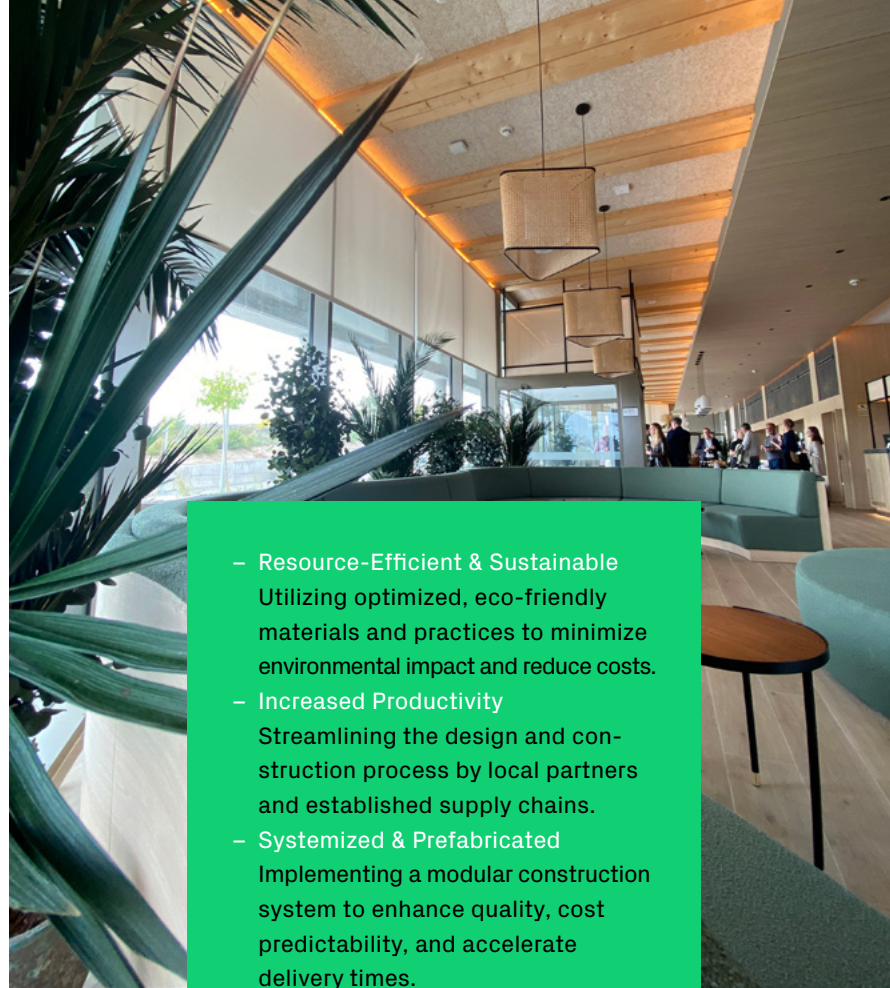
BUILT WITH STRONG GLOBAL PARTNERS.

Products & Services Partners significantly contribute to the efficiency of each project and enhance CREE's ability to deliver high-quality, sustainable building solutions across global markets.

HASSLACHER NORICA TIMBER From wood to wonders.	Gaulhofer EIN FENSTER. LANG. EIN LEBEN. LANG.
SCHÜCO	Blufab
smartaX™	peikko®

Find all our preferred suppliers here:





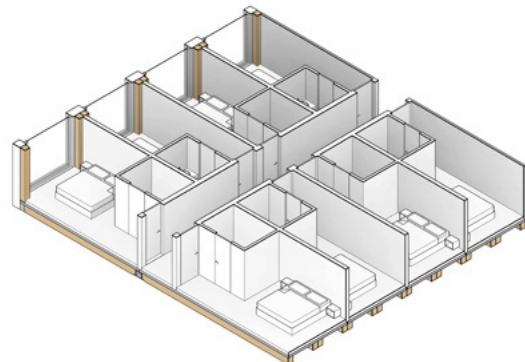
- **Resource-Efficient & Sustainable**
Utilizing optimized, eco-friendly materials and practices to minimize environmental impact and reduce costs.
- **Increased Productivity**
Streamlining the design and construction process by local partners and established supply chains.
- **Systemized & Prefabricated**
Implementing a modular construction system to enhance quality, cost predictability, and accelerate delivery times.
- **Flexible Design**
Minimized building structures enable customized designs that align with hotel brands' standards and corporate identity, while allowing for easy future refurbishments.

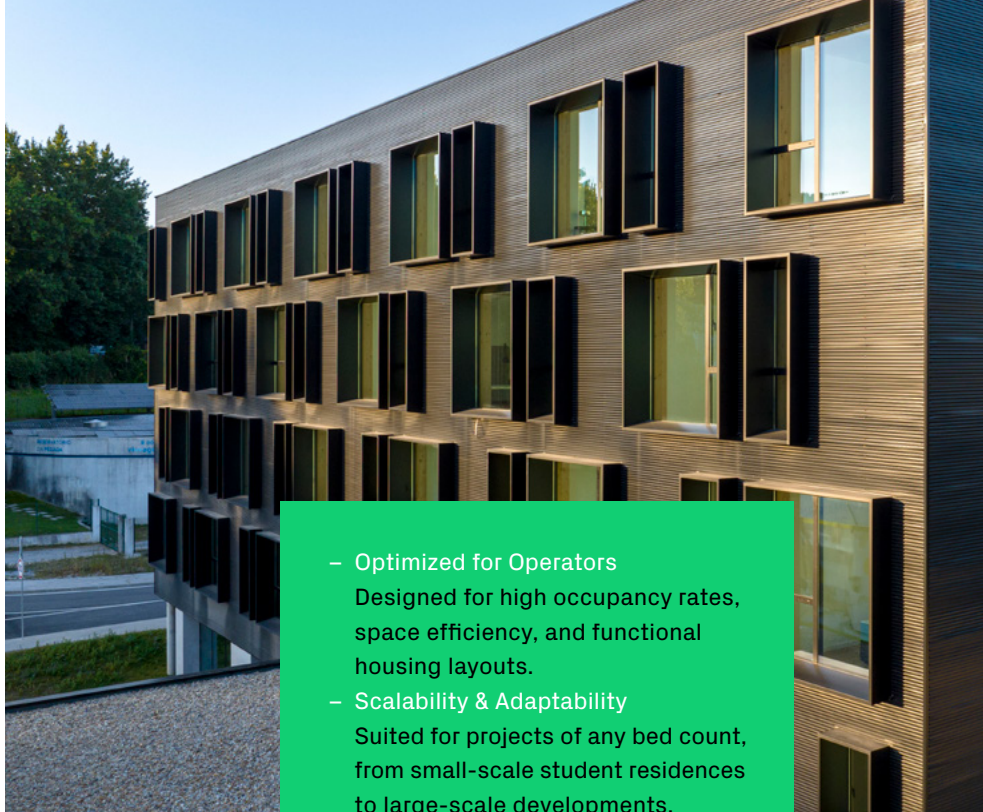
Hotel Solution

Positioned at the intersection of innovation and sustainability, the CREE Hotel Solution leverages our proven, prefabricated timber-hybrid building method and its innovative processes to deliver future-proof urban hotels. It is tailored to create hotels that are both eco-friendly and highly efficient and meet the unique needs of the hotel industry.

DESIGN FLEXIBILITY

The CREE Hotel Solution offers unparalleled layout flexibilities, allowing for various room configurations and designs.





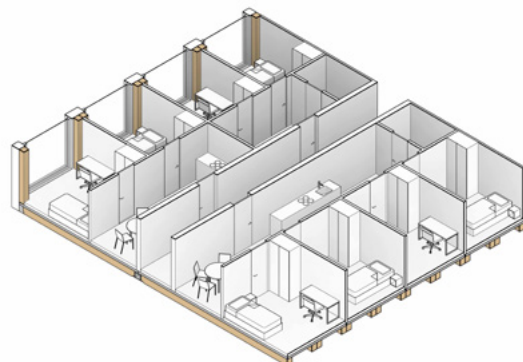
- **Optimized for Operators**
Designed for high occupancy rates, space efficiency, and functional housing layouts.
- **Scalability & Adaptability**
Suited for projects of any bed count, from small-scale student residences to large-scale developments.
- **Flexible Design**
Minimized building structure enables customized interior and exterior design, while allowing for easy future refurbishment.
- **Well-Being & Health**
Biophilic design with exposed wood promotes a healthier living environment, enhancing student well-being, academic performance, and satisfaction.

Student Housing Solution

The CREE Student Housing Solution is a scalable, modular building system designed for student accommodation of any bed count. Using our prefabricated timber-hybrid system, it enables rapid construction, flexible layouts, and long-term operational efficiency. With its smart approach, the CREE Student Housing Solution meets the demand for affordable, high-quality, and sustainable living spaces for the next generations of students.

FLEXIBLE & FUNCTIONAL HOUSING DESIGN

The CREE Student Housing Solution offers optimized layouts for maximum space and student comfort.





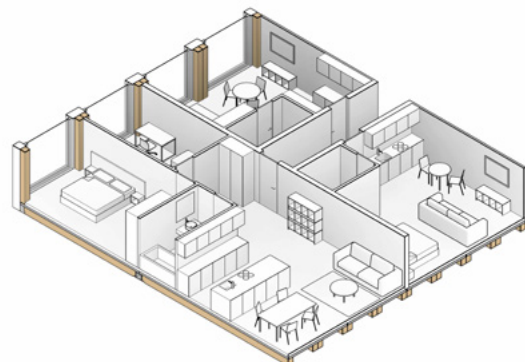
Residential Solution

The CREE Residential Solution is designed to meet the growing demand for modern, sustainable living spaces. It offers adaptable apartment layouts and flexible design options to accommodate different unit types and evolving residents' needs. Based on precise off-site manufacturing and fast on-site assembly, the solution streamlines the building process while ensuring long-term usability and consistent quality.

VERSATILE LIVING LAYOUTS

Adaptable apartment layouts and sizes meet diverse residents' needs, ensuring long-term usability and flexibility. Optimized designs support higher occupancy rates and modern living spaces.

- Higher Rent & Faster Sales
High-quality materials and well-designed interiors enhance the attractiveness of the property, driving higher rental income or faster sales.
- Lower Operating & Maintenance Costs
Efficient planning and durable materials reduce long-term operating and maintenance costs over the building's lifecycle.
- Speed of Delivery
Significantly reduced construction times enable earlier move-in, accelerating return on investment and maximizing profitability.
- Healthy Indoor Environment
Natural materials, improved air quality, and thoughtful design create a healthier indoor climate, enhancing comfort and well-being for residents.





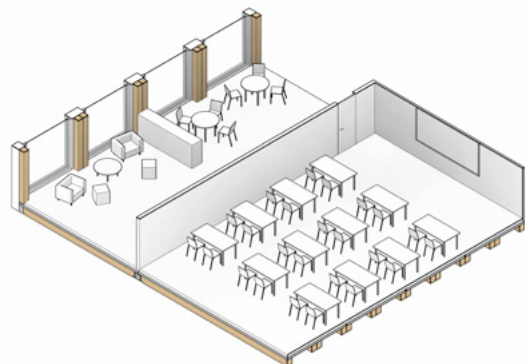
Educational Solution

The CREE School Solution is a modular timber-hybrid system designed to create dynamic, future-ready learning environments. It provides a flexible and scalable framework for creating environments that can adapt to different teaching formats, student group sizes, and long-term institutional developments. Built with prefabricated components and efficient processes, it ensures reliable project delivery aligned with academic schedules.

ADAPTABLE LEARNING ENVIRONMENTS

Adaptable classroom sizes and common areas allow schools to adjust to evolving pedagogical concepts and future educational requirements.

- **Healthy Indoor Environment**
Visible timber surfaces create a natural, calming atmosphere. Improved acoustics with reduced echo lead to quieter classrooms, enhancing focus and learning outcomes.
- **Flexible Layout**
A scalable design ensures long-term usability and the ability to adapt to new learning methods.
- **Speed of Delivery**
Accelerated construction timelines enable schools to be completed in time for the new academic year. Reduced on-site work and streamlined processes ensure punctual delivery and early occupancy.
- **Lower Operating Cost**
Significant reduction of Lower Operating Cost due to the optimized mechanical systems and building envelope.





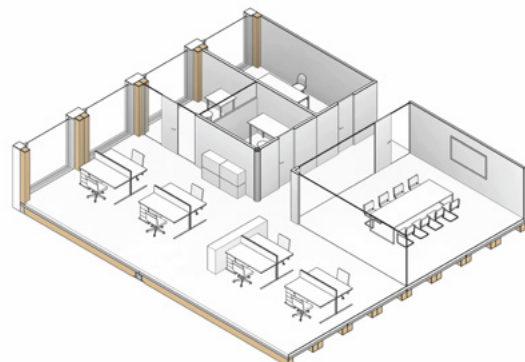
Commercial Solution

The CREE Commercial Solution delivers a future-ready approach to efficient workspaces, combining flexibility, sustainability, and innovation. Built on our proven prefabricated timber-hybrid system, this solution empowers developers to create highly adaptable environments – from individual offices to open-plan workspaces, meeting rooms, retail spaces, or event venues.

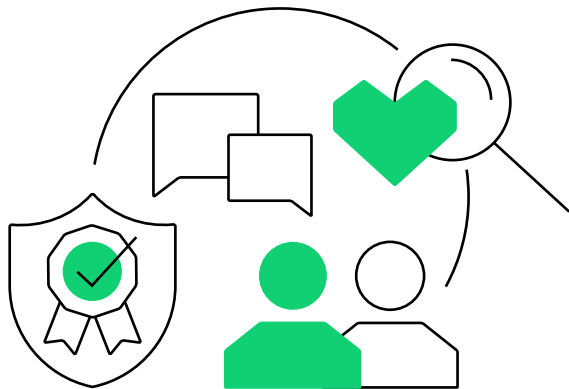
FLEXIBLE WORKSPACES

Various grid options and customization possibilities to meet specific needs for communal and private office spaces now and in the future.

- Flexible Layouts & Adaptability
Flexible layouts accommodate a wide range of uses and evolving business needs.
- Healthy Indoor Environment
Visible timber surfaces and natural materials create a warm, comfortable atmosphere that promotes employee well-being and productivity, while positively reflecting sustainability and social responsibility.
- Cost Certainty
Early and accurate cost forecasting enables reliable budgeting and financial planning.
- Rapid Return on Investment
Fast project delivery, lowered construction and operational cost, as well as earlier stabilization of the asset, lead to quicker return on investments.



Investing in a Greener Future for Construction



EACH INVESTMENT IN
CONSTRUCTING WITH CREE
MOVES US CLOSER TO A SUS-
TAINABLE NET ZERO FUTURE.

- Meets ESG criteria, SDGs, and all established certifications systems for sustainable construction
- Reduced life-cycle costs
- High financing eligibility - green asset
- Minimal resource consumption
- Up to 50% fewer CO₂ emissions

At CREE, sustainability is not a nice-to-have: it is our reason for being and part of everything we do.

ENVIRONMENTAL, SOCIAL, AND CORPORATE GOVERNANCE

CREE buildings are designed to meet ESG criteria, instilling investor confidence, decreasing the negative impacts of the industry, and increasing sustainability transparency.

Environmental: Our patented timber-hybrid system provides up to 50% reduction of embodied carbon emissions from structural materials, while CREE methods are also proven to reduce a building's life cycle carbon emissions by 50%.

Social: CREE buildings use sustainable construction materials and provide healthy environments to end users. Timber components of the structure are exposed, supporting the biophilic atmosphere of the building.

Governance: We support associated stakeholder reporting through the availability of well-documented and high-quality data regarding both components and building performance.

SUSTAINABLE DEVELOPMENT GOALS



Our buildings foster occupant well-being, with high-quality materials and visible wood creating indoor environments of the highest quality.



We are pushing the boundaries of structural timber in the construction industry, and promoting innovation and collaboration with license partners and our global network.



Our methods promote efficient resource management, apply circular economy principles, use local renewable resources where possible and substantially reduce waste generation through off-site prefabrication.



Our buildings help reduce embodied carbon emissions and operational energy demand, while timber-hybrid structures help long-term carbon sequestration and the push towards net zero.



We establish ever-growing global partnerships to create more sustainable buildings, and encourage knowledge exchange and innovation to build a better future.

“You cannot afford NOT to invest in a sustainable built environment.”

**WORLD GREEN
BUILDING COUNCIL**

More details on building sustainably:



TAXONOMY ENVIRONMENTAL OBJECTIVES FOR CONSTRUCTION OF NEW BUILDINGS

CREE buildings are aligned with EU Taxonomy criteria pertaining to:

- Climate change mitigation and adaptation
- Water and marine resources
- Circular economy, waste prevention, and recycling
- Pollution prevention and control
- Protection of healthy ecosystems

Platform

03

Scan here to
join our platform
and share your
perspectives:



Collective knowledge: greater than the sum of its parts.

The CREE Platform is the software behind the future of construction. As the CREE Network grows, we provide a virtual space for knowledge exchange to create better buildings.

The CREE Platform provides strategic partners, architects and engineers, products and services partners, and users around the globe with fruitful interactions, making knowledge available to all forward-thinking minds.

This innovative digital platform is not only a space to interact with like-minded peers, but also to exchange and refine specific ideas that will have a visible impact on the construction industry and beyond. Here we ensure that our shared vision continues to expand, improve, and evolve, incorporating new concepts and modules for future use.

Joining CREE as a partner is to be part of a global movement in green construction and sending a signal that you are serious about sustainability. We believe in building a better world, and want to share our exciting methods which, when further scaled-up, will contribute hugely to a net zero future.

THE CREE PLATFORM PROVIDES

- Knowledge sharing
- Belonging to a global community
- Streamlined project workflow
- Direct communication
- Project insights
- Continuous improvement
- Access to CREE Building Configurator

CREE CONFIGURATOR

The CREE Building Configurator is an innovative digital tool that complements the platform and enables fast and efficient design of CREE buildings. It provides live estimates for cost, construction time, and carbon impact while allowing rapid modeling of CREE System structures. Designs can be created either from a blank canvas or based on an uploaded floor plan, which can be traced and adapted into a system-compliant CREE model with ease.

“It’s a huge advantage to be able to share experiences on a shared platform like the CREE Platform.”

FREDERIK SPANNING
Wood Building Systems,
CREE Denmark

Network

04

SUCCESS STORIES

The vision to move **forward.** The will to work **together.**

“CREE helps us to transform our organization, moving the company towards sustainable standards and making people excited. Clients and stakeholders now see us as a greener company, more digital and future-focused. If you believe in a different future for construction, there is not a better project to be part of.”

MICHEL ELIZALDE ELIZALDE
ACR, Spain



“CREE is absolutely an important part of the future of building. Their philosophy made sense to us - modularity, repeatability and using the best qualities of several building materials with wood as a primary focus. We’ve had several meetings with existing clients, architects and developers interested in CREE’s benefits.”

DAVID ROBSON
Walbridge, USA

Together with our partners on the ground, we provide a collaborative global ecosystem. This diverse network of professionals is committed to improving and sharing sustainable building practices – empowering partners and their local supply chains to build for the future.

“CREE will be a highly sought-after technology. They’ve inspired us to reassess the way we construct and move away from traditional processes and methods. They are always looking at how to innovate and improve what they already have. So, CREE is always evolving.”

ROY KHOO
Kimly Construction, Singapore



“The CREE System is one of the best solutions to be cost-effective. Once you know the system, you can easily implement it on the next project based on the knowledge we acquired from the first one.”

QUENTIN DE MAN
CDCL, Luxembourg

Share a
vision and
succeed
together
as CREE
Partners.

Global Network



“If you want to go fast,
go alone. If you want to
go far, go together.”

AFRICAN PROVERB



We are constantly expanding our expertise on how to build sustainably, quickly, and at reduced risk – by continuously questioning the status quo and embracing a comprehensively regenerative approach.

continuous growth of our partner network and by investing in technology and people, like-minded collaborators can accelerate the exchange of knowledge across the world.

But we are not doing it alone. Through

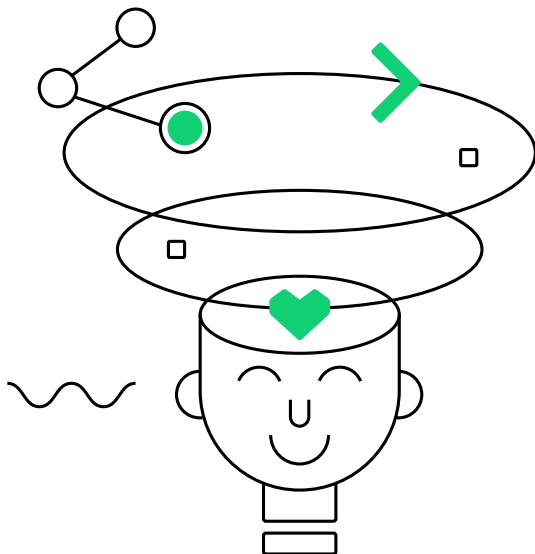


PARTNERSHIPS

Join our Global Network



Our partners contribute their knowledge and experience to continually improve the efficiency, versatility, and scope of the CREE building system. CREE plays a central role in collecting knowledge generated on each CREE Project and looping it back to all partners. This progress is driven not only by our vision, but also by the needs and creativity of our community.



THREE LEVELS OF PARTNERSHIPS

01 | LICENSE PARTNER

License Partners enable the actual realization of CREE Projects. This partnership is intended for general contractors with a strong track record of successfully delivered multi-story buildings, and for real estate developers who are looking to repeatedly implement efficient and sustainable building solutions based on a design-build ambition within their specific asset class.

02 | PRODUCTS & SERVICES PARTNER

P&S Partner further develop and enhance CREE Product Solutions. They have an important role in CREE Projects. As selected building product manufacturers and service providers they become preferred suppliers for the world's largest timber-hybrid construction collective.

03 | CREATOR

The CREEator subscription is intended for planning teams, architects, engineers, and consultants who are currently designing CREE buildings or wish to become recognized experts in doing so. By joining early design phases and working with the CREE System, they help accelerate collaboration across all project stakeholders.

Get to know
our network
and become
part of it.





License Partners

Empowering local execution. Building a global future.

License Partners are general contractors or developers with a design-build ambition and with experience in large-volume, multi-story building projects who are licensed to implement the CREE System within a defined territory. They play a vital role in realizing CREE buildings locally while contributing to a global movement towards more sustainable and efficient construction.

Our network of professionals is committed to improving and sharing sustainable building practices, empowering partners and their local supply chains to build for the future.

STRUCTURED COLLABORATION FOR REGIONAL DELIVERY

License Partners receive access to CREE's intellectual property, methodologies, and technology to evaluate project opportunities, assess system suitability, and define effective implementation strategies.

Together, we establish decentralized local supply chains, enabling the production of CREE Elements using regional precast and carpentry expertise and minimizing transport distances.



SUCCESSFUL INTRODUCTION IN YOUR MARKET

Before entering into a CREE License Partner Agreement, a 6-month scoping period is conducted together with CREE to evaluate all key success factors for a successful introduction of the system in the respective market.

This collaborative workshop covers the areas of cost structures, code compliance, supply chain set-up, volume and IRR review, team structure, and marketing strategy. Upon completion the partners are ready to join CREE's global network and start realizing CREE buildings in their markets.

During the first project, CREE provides comprehensive support across design, approval, and construction phases to ensure a high-quality, replicable building process. Ongoing execution monitoring safeguards system consistency and project success across all future developments.

CONNECTED THROUGH A GLOBAL NETWORK

License Partners are fully integrated into the CREE Platform, gaining access to proprietary system updates, planning and procurement resources, and insights from across the network. Through continuous exchange with other members – including CREEators and Products & Services Partners – License Partners benefit from collective innovation and shared best practices.

The CREE Platform facilitates faster project delivery, improves precision through off-site production, and strengthens the local value creation that drives our shared vision of building for the future.

SCOPING PERIOD

- Duration: 6 months
- Cost competitiveness review
- Code & regulation check
- Local supply chain assessment
- Workshop: CREE Building Configurator
- Marketing & market analysis

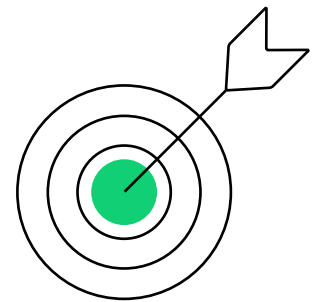


BENEFITS OF JOINING THE CREE NETWORK

- License and training to apply the CREE System in defined markets
- Access to technical standards, system documentation, and project insights
- Structured collaboration and support through initial project phases
- Participation in the global CREE Network and knowledge exchange
- Receiving project leads

Products & Services Partners

By joining the CREE Network, Products & Services Partners become a natural part of CREE Projects – and preferred suppliers for the world’s largest timber-hybrid construction collective.



BEYOND A BUILDING SYSTEM

What makes CREE different is not only how we build – but who we build with.

Our building method provides the foundation, but to realize truly smart, fast, and sustainable buildings, we go further. Together with selected building product manufacturers and service providers, we bring the full potential of innovation into each project.

Products & Services Partners further develop and enhance CREE Product Solutions. They are involved at an early stage, are visible to key stakeholders, and offer integral delivery options. Their solutions interface with CREE’s standardized product portfolio, meet our quality requirements, and enable direct sales within the network.

BENEFITS FOR PARTNERS

By joining the CREE Network, partners become part of one of the leading timber-hybrid construction collectives - gaining credibility, shared expertise, and connections to developers, architects, and contractors.

P&S Partners are an essential part in realizing projects in the most cost-effective, sustainable, and resource-conscious way. As a preferred partner in CREE Projects, they benefit from direct reference in the CREE Ecosystem and become part of a trusted circle of suppliers used across markets. Even outside of direct project involvement, partners gain long-term brand exposure and recognition as contributors to one of the most sustainable building methods.





Gaulhofer offers wooden windows, front doors, and sun protection as a complete solution – backed by over a century of expertise.



Peikko enables efficient structural solutions worldwide with cutting-edge slim floor systems and advanced connection technology for precast and in-situ concrete construction.



Blufab offers prefabricated modular panels for interiors, combining self-supporting metal frames, cladding, and integrated hydraulic and electrical systems for sanitary and kitchen facilities.



HASSLACHER group shapes the future of timber construction with globally integrated system solutions and smart innovations in engineered timber.



Smartax is an innovative manufacturer of low carbon footprint drywall systems for non-load-bearing walls, combining lean construction principles with fast installation, cost efficiency, and high acoustic and fire performance.



Schüco develops sustainable window, door, and façade systems in aluminium, steel, and PVC-U. With innovative design, digital solutions, and a strong focus on energy efficiency, Schüco supports partners worldwide across the entire building life cycle.



CREEators

The more who join us on our journey, the faster we will go: meet the CREEators, a win-win-win collaborative model to push forward the cause of sustainable construction.

Being a CREEator signals expertise in building sustainably and boosts visibility.

WHO ARE CREEATORS?

CREEators are carefully selected companies who are currently designing CREE buildings or would like to become recognized experts in doing so. Typical CREEators include integrated planning teams, architects, structural engineers, MEP experts, and sustainability consultants.

PLANNING WITH CREE

A new systematized way of building requires early harmonization of stakeholders, and early design decision-making. Our CREEator partnership expedites this integration bringing all stakeholders to the same page while offering the possibility to tender the integration of the different parties in the market.

We share our knowledge and experience, offer training programs, as well as supporting and meeting the needs of CREEators throughout the building design process.

As CREEators gain more experience working with CREE Methods, they learn to quickly identify projects where CREE would be a good match. This integrated planning process results in a highly sustainable, unique timber-hybrid building.

CREEATOR BENEFITS

Being a CREEator expands a company's portfolio and boosts visibility among trusted network partners. Adopting the CREE Process and collaborating with the CREE Network accelerates CREEator's planning processes, making every next project more efficient than ever.

CREEators share their design processes, projects, and their expertise on the Platform and learn from each other. They also get the chance to adopt the system and offer their design expression to CREE Product Solutions which can be then realised by number of partners, across the globe.



“The CREE System embodies a circular economy design philosophy and allows us, as engineers, to push the performance of timber even further. Thanks to their open network and professional support, SGI are happy to be part of the CREE Community.”

PHILIPPE SCHMIT
SGI Groupe, Luxembourg



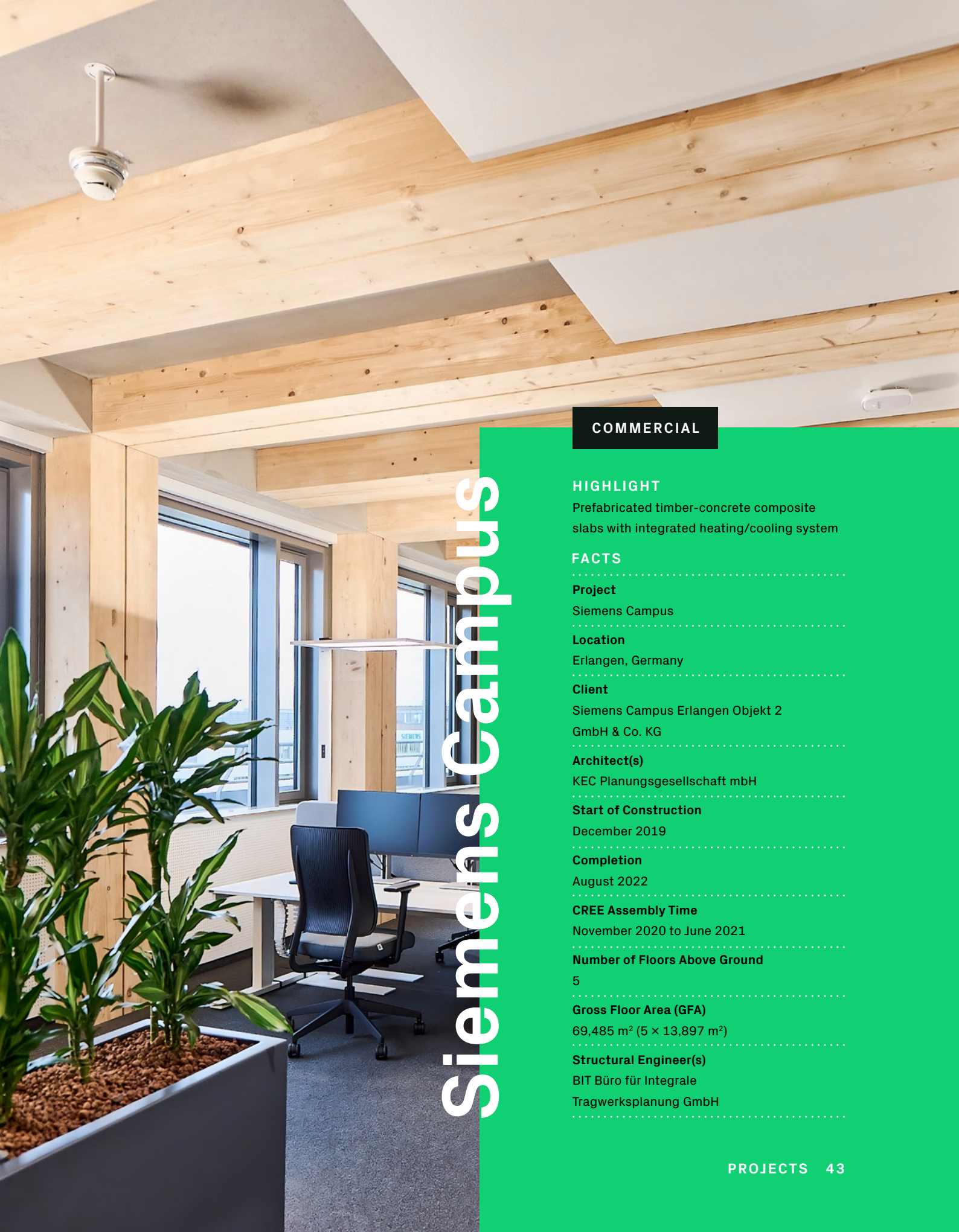
Projects

The CREE System has been implemented around the globe. Here is a selection of some of our landmark projects.

05

Scan here
to see our
ever-growing
portfolio of
building
projects:





COMMERCIAL

Siemens Campus

HIGHLIGHT

Prefabricated timber-concrete composite slabs with integrated heating/cooling system

FACTS

Project

Siemens Campus

Location

Erlangen, Germany

Client

Siemens Campus Erlangen Objekt 2 GmbH & Co. KG

Architect(s)

KEC Planungsgesellschaft mbH

Start of Construction

December 2019

Completion

August 2022

CREE Assembly Time

November 2020 to June 2021

Number of Floors Above Ground

5

Gross Floor Area (GFA)

69,485 m² (5 × 13,897 m²)

Structural Engineer(s)

BIT Büro für Integrale Tragwerksplanung GmbH



Eunoia Junior College

EDUCATIONAL

HIGHLIGHT

First use of the CREE System in a high-rise building

FACTS

Project

Eunoia Junior College

Location

Bishan, Singapore

Client

Ministry of Education

Architect(s)

CPG Consultants Pte Ltd

Start of Construction

March 2017

Completion

December 2019

Number of Floors Above Ground

10 & 12

Gross Floor Area (GFA)

51,502.6 m²

Structural Engineer(s)

CPG Consultants Pte Ltd





UBC Gateway

EDUCATIONAL

HIGHLIGHT

First CREE Project in North America and first to implement 10.5 m long slabs in the system

FACTS

Project

The Gateway Building,
University of British Columbia

Location

Vancouver, Canada

Client

UBC Properties Trust

Architect(s)

Perkins&Will in collaboration with
Schmidt Hammer Lassen

Start of Construction

October 2022

Completion

August 2025

CREE Assembly Time

12 slabs per day, equivalent of up to 370m²/day

Number of Floors Above Ground

6

Gross Floor Area (GFA)

24,800 m²

Structural Engineer(s)

RJC Engineers



Allégra Luxembourg

COMMERCIAL

HIGHLIGHT

Fully integrated, scaffold-free wall assembly

FACTS

Project

Allégra

Location

Leudelange, Luxembourg

Client

CDCL SA

Architect(s)

architecture + aménagement s.a.

Start of Construction

May 2020

Completion

January 2022

CREE Assembly Time

9 weeks North Wing | 4 weeks South Wing

Number of Floors Above Ground

4

Gross Floor Area (GFA)

5,600 m²

Structural Engineer(s)

LSC Engineering Group S.A.





Illwerke Zentrum Montafon

COMMERCIAL

HIGHLIGHT

First CREE Project within a conventional concrete budget

FACTS

Project

Illwerke Zentrum Montafon

Location

Montafon, Austria

Client

Vorarlberger Illwerke AG

Architect(s)

Hermann Kaufmann + Partner ZT GmbH

Start of Construction

March 2012

Completion

August 2013

CREE Assembly Time

30 days

Number of Floors Above Ground

5

Gross Floor Area (GFA)

11,500 m²

Structural Engineer(s)

merz kley partner GmbH





EDGE Suedkreuz Berlin

COMMERCIAL

CO₂ SAVINGS AT EDGE SUEDKREUZ, BERLIN

Compared to conventional reinforced concrete façade elements/ceilings in comparable sizes:

- Wooden exterior wall elements incl. support, windows, thermal insulation save up to 80% CO₂ in life cycle assessment
- Timber-hybrid ceilings save up to 70% CO₂ in life cycle assessment
- In the overall building level, the choice of timber-hybrid construction results in up to 40% CO₂ savings in the life cycle assessment of building materials.

HIGHLIGHT

Biggest timber-hybrid project in Central Europe and footprint on irregular shape

FACTS

Project

EDGE Suedkreuz Berlin

Location

Berlin, Germany

Client

SXB 1 S.a.r.l. / SXB 2 S.a.r.l.

Architect(s)

TCHOBAN VOSS Architekten GmbH

Start of Construction

April 2019

Completion

MK1: December 2021 | MK2: March 2022

CREE Assembly Time

MK1: 30 days | MK2: 85 days

Number of Floors Above Ground

MK1: 7 | MK2: 8

Gross Floor Area (GFA)

32,000 m²

Structural Engineer(s)

Buro Happold | BIT Büro für integrale
Tragwerksplanung GmbH



COMMERCIAL

Wood Hub

HIGHLIGHT

Belgium's first timber-hybrid office building producing nearly as much energy as it consumes

FACTS

Project

Wood Hub (Serenity Valley Offices)

Location

Brussels, Belgium

Client

CFE Group

Architect(s)

ARCHi2000

Start of Construction

January 2022

Completion

October 2023

Number of Floors Above Ground

5

Gross Floor Area (GFA)

7,300 m²

Structural Engineer(s)

ARCHi2000





M40 - Macherei Berlin-Kreuzberg

COMMERCIAL

HIGHLIGHT

M40 replaces timber walls with a suspended glass façade – offering a clear view of the timber-hybrid structure

FACTS

Project

Die Macherei Berlin-Kreuzberg – M40

Location

Berlin, Germany

Client

Art-Invest Real Estate

Architect(s)

Robertneun Architekten

Start of Construction

January 2022

Completion

August 2024

Number of Floors Above Ground

8

Gross Floor Area (GFA)

27,800 m²

Structural Engineer(s)

Wetzel & von Seht



B&B HOTELS



The First



HOTEL

HIGHLIGHT

This is the first timber-hybrid building in the Iberian Peninsula and the first hotel project constructed using the CREE System.

FACTS

Project

The First

Location

Guimarães, Portugal

Client

B&B Hotels

Architect(s)

Mário Fernandes

Start of Construction

February 2022

Completion

February 2023

Number of Floors Above Ground

5

Gross Floor Area (GFA)

8,300 m²

Structural Engineer(s)

ASPECT Structural Engineers

The First

40%


FASTER DELIVERY TIME

60%

CARBON REDUCTION

33%

MATERIAL SAVINGS



COMMERCIAL

HIGHLIGHT

First CREE Project

FACTS

Project

LCT ONE

Location

Dornbirn, Austria

Client

Aspermont Holding GmbH

Architect(s)

Hermann Kaufmann + Partner ZT GmbH

Start of Construction

September 2011

Completion

September 2012

CREE Assembly Time

8 days

Number of Floors Above Ground

8

Gross Floor Area (GFA)

2.319 m²

Structural Engineer(s)

merz kley partner GmbH

LifeCycle Tower ONE



Publisher

CREE GmbH
Färbergasse 17b
Rhomberg's Fabrik | Haus L
6850 Dornbirn, Austria
T +43 5574 403-3190
E info@creebuildings.com
creebuildings.com

Content Management

Volker Weissenberger, Alexandra Fink,
Isabel Schieder, Anna Dobler

Concept & Design

Design Studio Anomali | Lisa Herljevic

Text & Editing

Evergreen Communication

Pictures

CREE GmbH, Hermann Kaufmann +
Partner ZT GmbH, Jan Meier, Harshan
Thomson Photography, Grupo Casais,
United Nations, Darko Todorovic
Photography, EDGE Technologies,
Siemens AG, CDCL SA, Norman A. Müller,
Rainer Schmidt, Perkins&Will, Effekt,
ACR, Imigo, Partisans, Wellgrounded,
CFE Group, Art-Invest Real Estate, Biome

The rights for logos and designs used in
this brochure are held by CREE GmbH.
Subject to typographical and printing
errors.

The CREE Headquarters is located in
Dornbirn, Austria. Our global partner
network currently extends from Europe
to Asia and North America.

**Let's shape the
future together.**

creebuildings.com