

GET SMART

THE CONNECTED SHOP



**SMART CURTAIN ROBOT
USER MANUAL**

Welcome to the Smart Curtain Robot User Manual. Your easy, step-by-step guide to set up and connect your Smart Curtain Robot. The device is designed to be user-friendly and convenient.



SUMMARY

I. Device Set Up



1. Set-up Guide
 - a) Set-up Video

II. Device Functions



2. Initial State of your Smart Curtain Robot
 - a) Access Device

III. Mobile App Connection



3. Registering on the Mobile App
 - a) Downloading the Mobile App
 - b) Adding Devices

PACKAGING DETAILS



1 Smart Curtain Robot

2 USB Charger

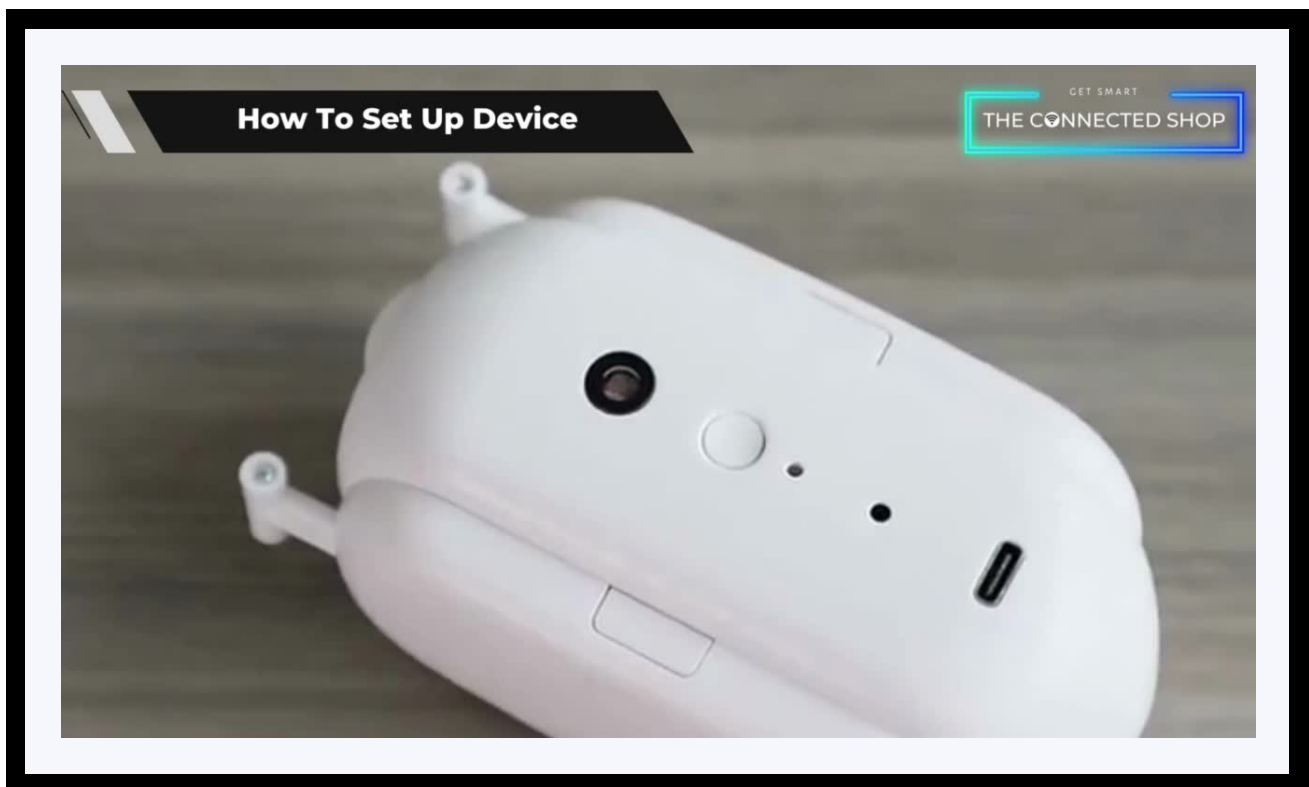
STEP-BY-STEP SET-UP GUIDE



1. SET UP



- a. Remove all the items from its original box and assemble the parts accordingly
- b. Turn on the device by long-pressing the on/off button
- c. Hang and secure the device onto your curtain rods
- d. Follow the video below and proceed to the next steps on how to pair your device to the mobile app

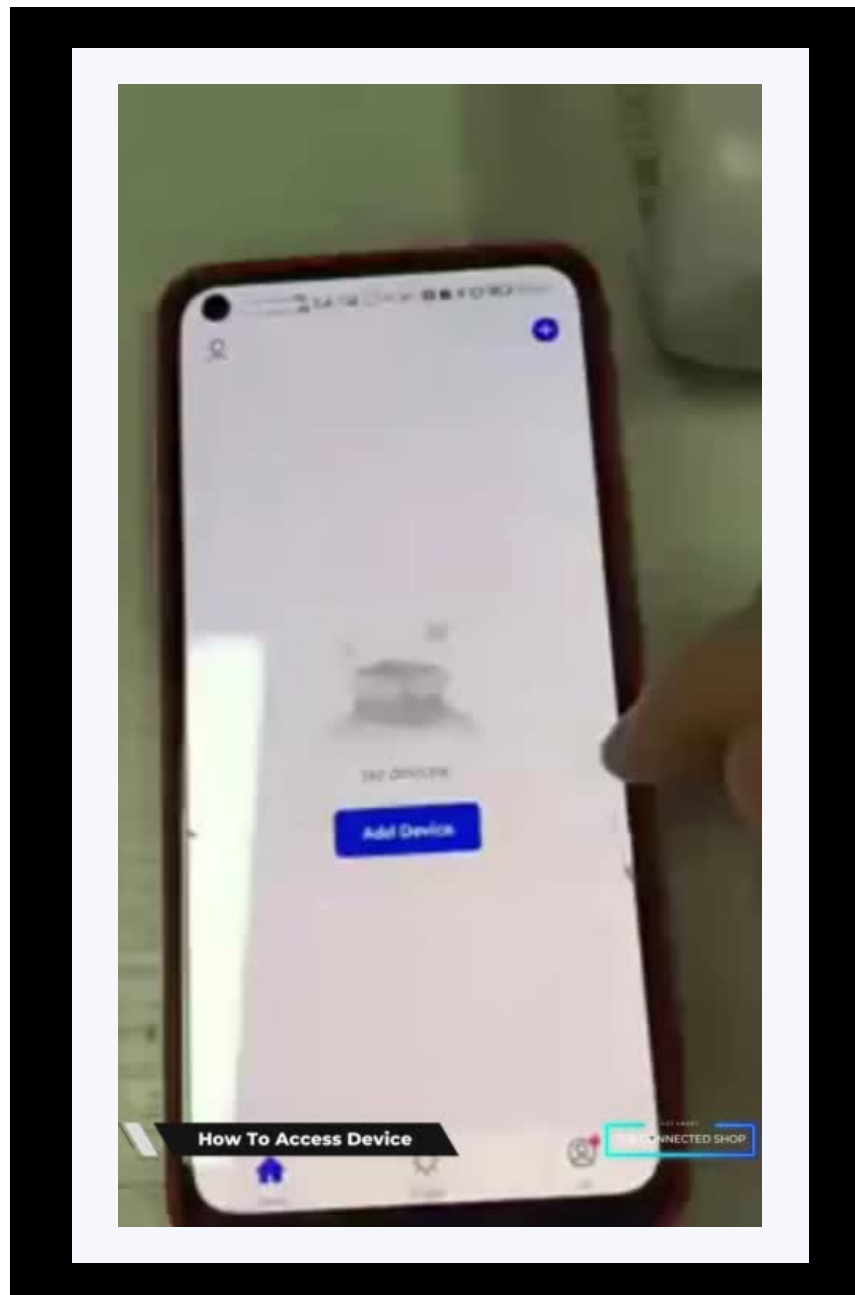


2. INITIAL STATE OF YOUR DEVICE



a) Access Device

- To gain access and control over the device, open the mobile app
- Activate the device by choosing to either close or open your curtains
- You can even preset a timer for the device to open or close your curtains; or to do a specific action when the temperature reaches a certain point



3. MOBILE APP CONNECTION



a) Downloading the App

Download the application on the Google Play Store or Apple AppStore by searching “Tuya Smart” or by scanning the QR code below

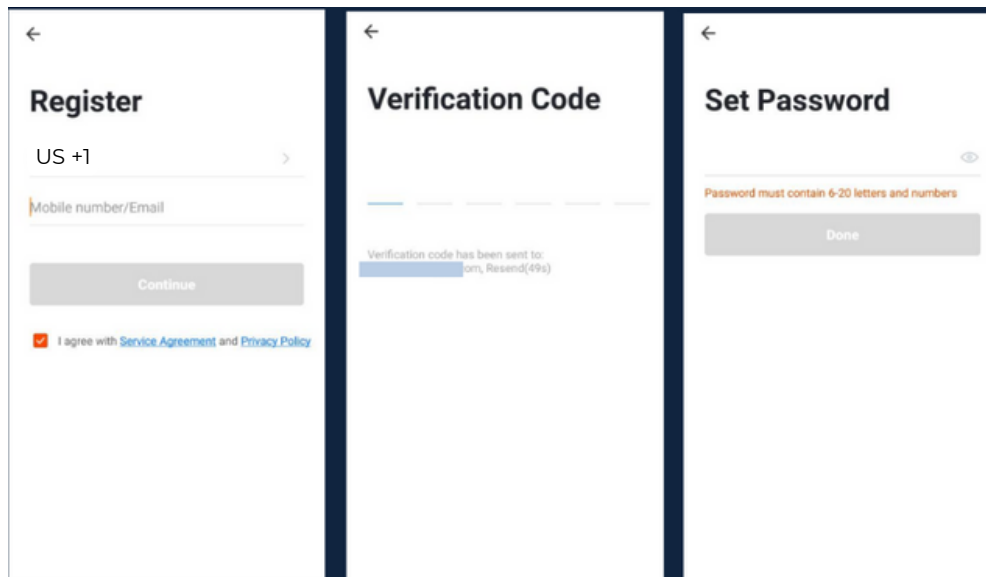


b) Logging in and Registering

After Downloading the App

- Select the country from which you will be using the device, usually the app will prompt it automatically
- You will be redirected to register via email where a verification code will be sent and proceed to enter it on the app in the allotted time limit
- Once the verification code has been entered into the app, you will be asked to set your password
- You will then have full access to the Tuya Smart Platform

3. MOBILE APP CONNECTION

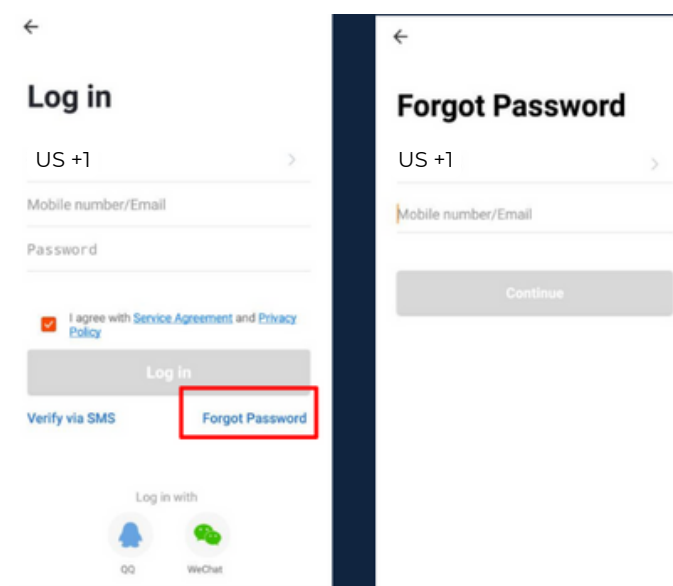


Should you be an existing user to the Tuya Smart Platform, log in using your email and password from the login page.

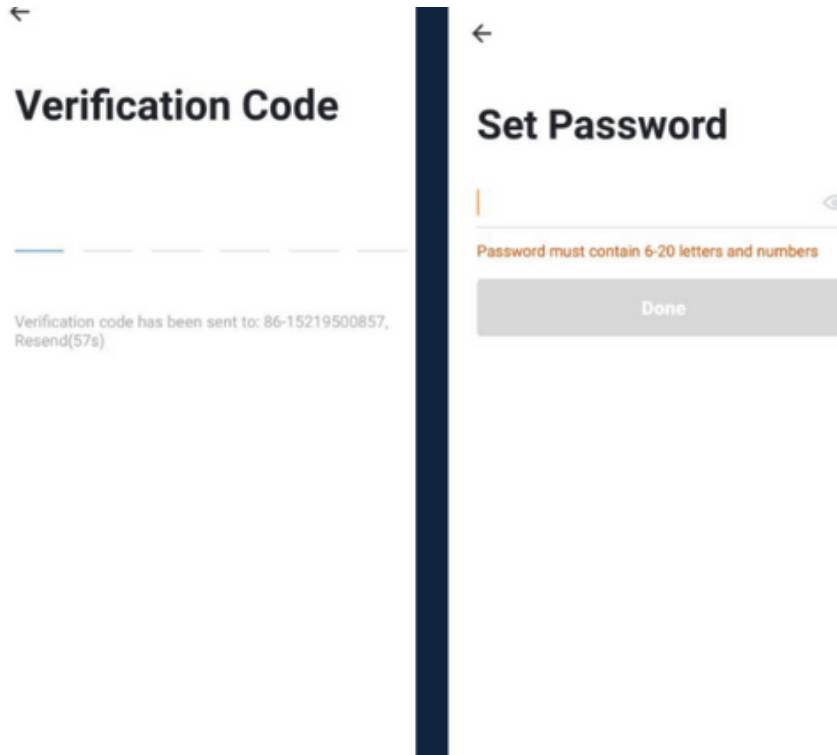
c) Resetting your Password

In case you have forgotten your password and need to reset it, please follow the steps below:

- On the Login Page, when prompted for your email & password, click “Forgot Password” button located below the “Login” button
- Select the country from which you will be using the device, usually the app will prompt it automatically



3. MOBILE APP CONNECTION



- You will be prompted to enter the email where a verification code will be sent and proceed to enter it on the app in the allotted time limit
- Once the verification code has been entered into the app, you will be asked to set your new password
- You will then have full access to the Tuya Smart Platform

In the case that you would like to change your password from the app, please follow the steps below:

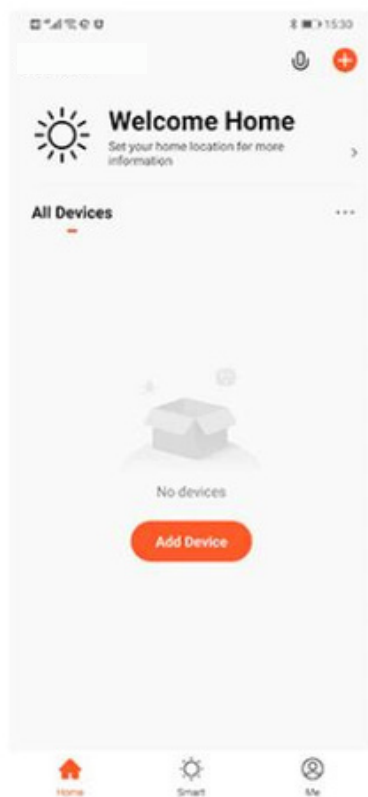
- Tap the 'Me' tab on the bottom right hand corner of your screen
- Click 'Change Login Password'
- You will be taken to the 'Account Verification' page and then tap 'Get Verification Code' button
- This will send a verification to your registered email
- Enter the code in the app
- Proceed to enter the new password

3. MOBILE APP CONNECTION

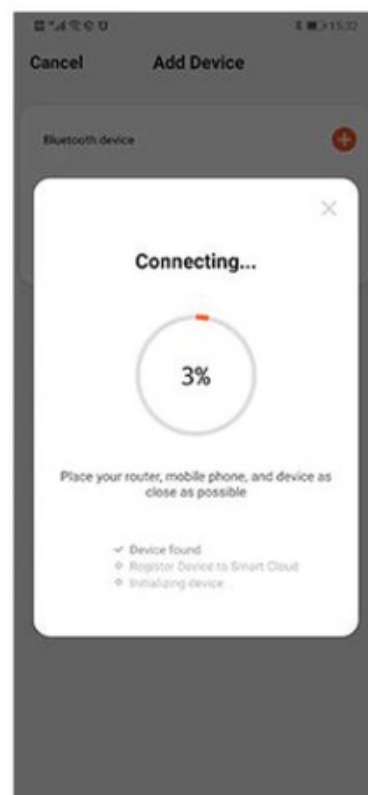


d) Adding Devices

To add devices on the app, please follow the instructions below. Your devices and phone must be connected to the same Wi-Fi network in order for this to work.



- To add a device, click the 'Add Device' or tap the 'Plus' button on the top-right corner of your screen and select 'Add Device'
- Enable Bluetooth and phone location to proceed
- The app will automatically detect a nearby device. Select it when it pops up on the screen



- Wait for the app to finish searching for the device
- Finish adding your device. Once this has been done successfully, you can go on to change the name of your device and control its functions

Congratulations!

You have successfully set up your very own Smart Curtain Robot.
Thank you for being a valued customer of The Connected Shop.

www.theconnectedshop.com





THE CONNECTED SHOP