

2026

BEYOND THE FRAME



a **NUCOR** company

BEYOND THE FRAME

Organized by market, *Beyond the Frame* celebrates the limitless potential of metal building design, highlighting an array of applications and solutions that demonstrate just how far creativity and engineering can take our industry.

This year, we invite you to experience metal building design through a new lens—one centered on people. As our industry continues to evolve, so do the communities we serve. Behind every structure is a story of purpose, connection, and the people who bring these spaces to life.

In this edition, we highlight project case studies that showcase how custom metal buildings strengthen and grow communities. Each featured project reflects the craftsmanship and dedication of our Authorized Builders as they transform architectural vision into meaningful spaces.

We hope these stories and images inspire you to imagine what's possible when we think **Beyond the Frame**.



To have your project considered for a feature in a future issue of "Beyond the Frame," submit your projects to our annual Calendar Program at nucorbuildingsystems.com/calendar.

COVER









FRONTWAVE ARENA
Pascal Steel Coporation
Oceanside, CA

12

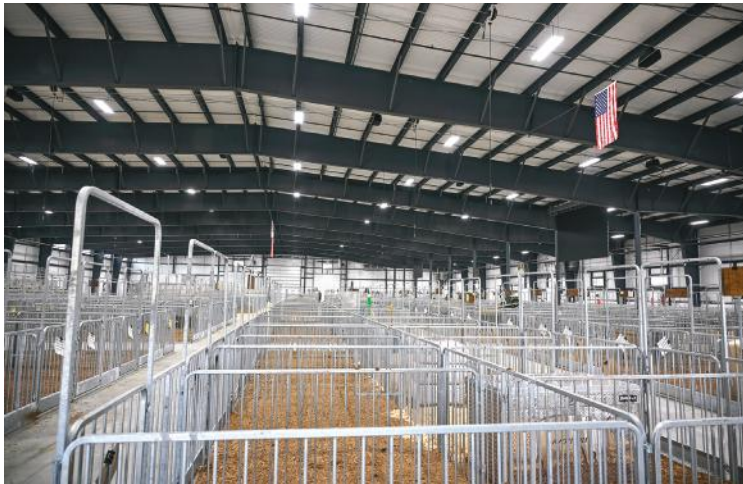


TABLE OF CONTENTS

CASE STUDY	04	
AGRICULTURAL	08	
CASE STUDY	12	
ATHLETIC + RECREATION	16	
CASE STUDY	20	
AVIATION	24	
COMMERCIAL	28	
CASE STUDY	32	
COMMUNITY + GOVERNMENT	38	
CASE STUDY	42	
INDUSTRIAL + MANUFACTURING	46	
CASE STUDY	52	
OFFICE	56	
RELIGIOUS	60	
WAREHOUSE + DISTRIBUTION	64	



CASE STUDY



LORAIN COUNTY FAIR EXPO CENTER

In an effort to make the fairgrounds a year-round event destination capable of supporting far more than the county's annual fair, the Lorain County Agricultural Society undertook a transformative expansion anchored by the new Ross Expo Center and the Maureen M. Cromling Memorial Arena. Together these structures deliver a flexible complex designed to support agriculture, entertainment, sports, and community events throughout the year.

For Lorain County, the project represents an investment not just in buildings, but in shared experiences. From livestock shows and agricultural programming to concerts, sporting events, and large-scale community gatherings, the new facilities provide the infrastructure needed to host diverse events that strengthen local



Janotta & Herner
Wellington, OH





connections and keep the fairgrounds active well beyond the annual county fair.

Authorized Nucor Builder Janotta & Herner served as the Design-Builder for the project, self-performing the design, engineering and construction of the new facilities, and partnered with Nucor Building Systems to provide a cost-effective, functional, and visually striking facility that balances tradition with versatility.

"The Ross Expo Center was designed to honor the agricultural heritage of the fairgrounds while also serving as a modern, state of the art venue capable of hosting events year-round," said Kyle Stang, vice president of Janotta & Herner.

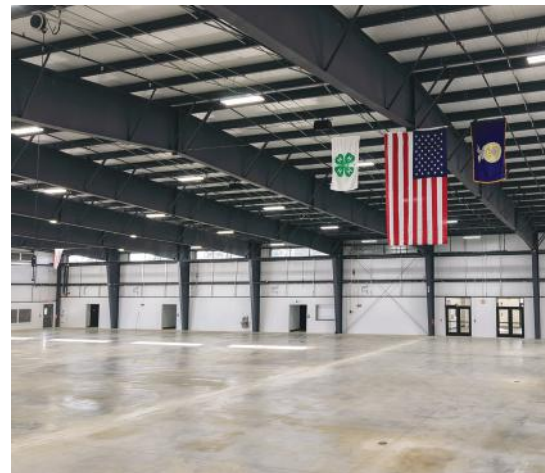
Functionality was equally critical to the design. Constructed as a true multi-purpose venue, the 68,200 sf Expo Center accommodates numerous events and gatherings with a layout that prioritizes openness, adaptability, and occupant comfort. A pre-engineered metal building system played

a central role in achieving the project's goals. The building features an expansive 150' clear span and 20' clear height, creating a large, unobstructed interior that allows the space to be easily reconfigured for a wide variety of events.

A Nucor building system was selected primarily for its efficiency and functional performance, enabling the Project Team to deliver expansive interior space required without compromising the budget. Insulated metal panels form the Expo Center's envelope, supporting use throughout all months with occupant comfort.

Unlike traditional fairground structures with limited seasonal use, the Expo Center was built as a fully conditioned facility. Heating, air conditioning, and robust ventilation systems were incorporated to support both livestock events as well as high-occupancy gatherings, ensuring comfort regardless of season or event type.

Complementing the Expo Center, the 32,400 sf, open-air horse arena is a competition-sized covered venue that



provides ample clear span and height for unbarred use. Its aesthetics align with the Expo Center and includes Nucor's CFR roof system and A-Panels along the perimeter.

Historically, the Lorain County Fair generated the majority of its revenue during a single week each year. The new complex fundamentally changes that model by enabling the fairgrounds to host events and generate income throughout all weather conditions. Beyond financial impact, the facility elevates the fairgrounds' presence within the community, positioning it as an active destination rather than a once-a-year attraction.

Janotta & Herner secured the project in a competitive bid environment by exploring multiple design and construction approaches and leveraging a collaborative partnership with Nucor to identify the optimal balance of cost, functionality, and performance.

"Janotta & Herner and Nucor have been partners for a long time," said Stang. "Nucor was integral in the design-

build process to assist Janotta & Herner in analyzing construction and cost options, ultimately delivering a facility that maximized the building use while remaining cost-competitive."

Open communication and flexibility throughout the process were key contributors to the project's success, allowing the team to adapt materials and systems as needed to meet the owner's goals while staying competitive in the bidding process.

The Lorain County Fair Expo complex delivers a modern, multifunctional facility that honors agricultural heritage while expanding opportunities for connection, engagement, and growth. With expansive clear spans, flexible interiors, and durable metal construction, the project represents a long-term investment in the fairgrounds and the broader Lorain County, Ohio community—ensuring the space can continue to serve as a hub for people, events, and shared experiences for generations to come. ●

AGRICULTURAL



1

POINTE AUX PINS 1
AGRICULTURAL EVENT CENTRE
 JB Steel Buildings Ltd.
 Sherwood Park, AB



2

ZAVISLAN BARN 2
 Bighorn Steel Buildings Inc.
 Pueblo West, CO

JON & SARA SHEPHERD 3
 Ferranti Metal Building Sales
 Redwood Valley, CA



3

MID COAST COOLING 4
 CCE Construction, Inc.
 Santa Maria, CA





1



3



2



4



5

AGRICULTURAL

- 1 NUTRIEN AG - TIPTON**
Greystone Construction Company
Tipton, IN
- 2 JAY BERRY**
K. Graber Construction, LLC
Marion, IN
- 3 PREMIER COOPERATIVE**
Greystone Construction Company
Cuba City, WI
- 4 YOUNGMAN**
Silverline Structures, LLC
De Leon Springs, FL
- 5 VINCENT HIGH SCHOOL BARN**
Redhawk Metal Buildings LLC
Milwaukee, WI



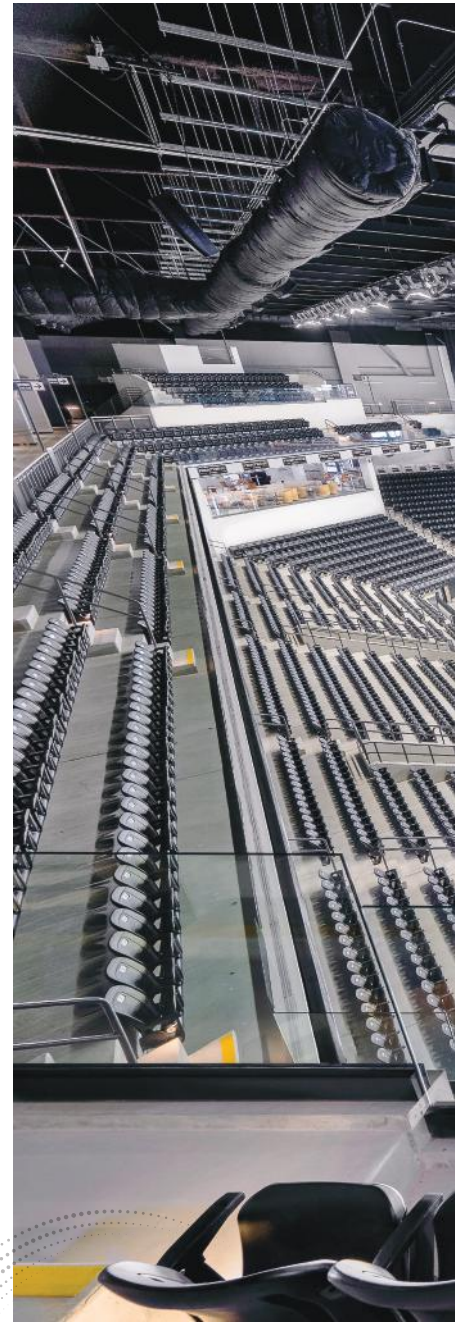
CASE STUDY



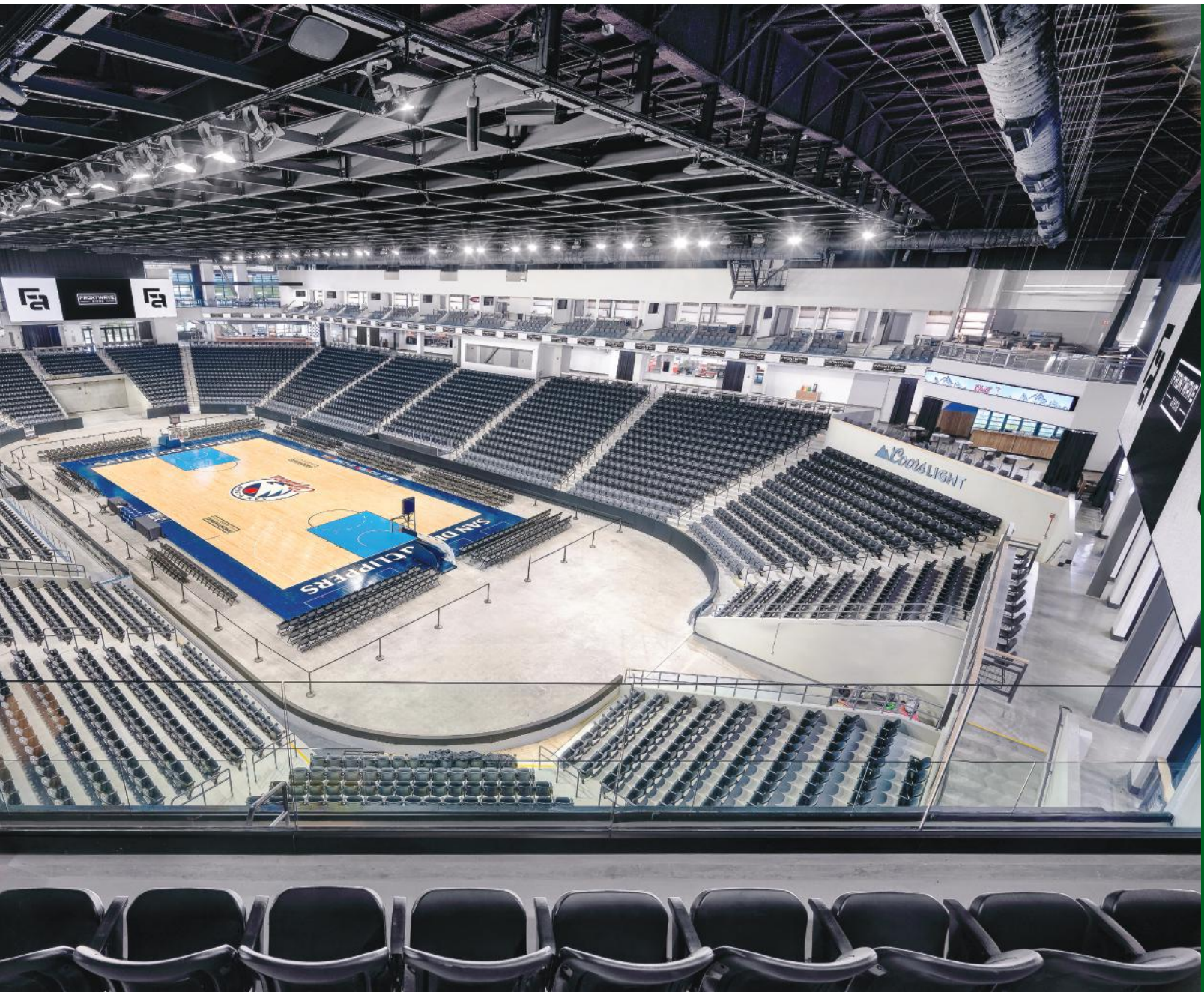
FRONTWAVE ARENA

In the heart of Oceanside, California, sits the luxury sports and entertainment hub for North County San Diego. The goal of the project evolved from a basic sports arena solely serving the San Diego Sockers, to a premier venue for a growing roster of sports teams, family shows, community events, and concerts. What stands today is more than a venue; it is a space built with the intention to serve the community, drive economic growth, and change the face of entertainment.

Authorized Nucor Builder, Pascal Steel Corporation, was selected as a subcontractor for this significant project. Responsible for supplying and erecting the pre-engineered metal building for the arena, Pascal chose to partner with NBS to meet the client's requirements. Project Manager of Pascal Steel, Tim DePascale, says "We needed



Pascal Steel Corporation
Oceanside, CA







to provide a large 215' clear span structure that did not obscure site lines, and a thermal envelope that was suitable for hockey was important to the overall design. A pre-engineered metal building was the most economical solution to meet these requirements."

The full complex spans 170,000 sf, with Nucor Building Systems providing the over 85,000 sf arena portion of the project. Designed to integrate seamlessly with several existing buildings on the site, the arena uses a gable framing system to achieve its wide, open interior. Additional support spaces such as restrooms and corner areas were constructed using lean-to framing systems to complete the expansion. Insulated metal panels were used on some of the walls and roof to help achieve the necessary thermal envelope and provide a clean and attractive exterior.

A challenge emerged midconstruction when the facility's purpose evolved from a traditional sports structure to a full entertainment venue, after the steel had already been fabricated and delivered. The initial design included minimal show rigging capabilities, but the revised scope required rigging support across the full coliseum. Nucor responded quickly, engineering a reinforced beam system that integrated seamlessly with the already fabricated steel, ensuring the upgraded venue could meet the demands of large scale events for the community.

With the structural challenges resolved, the project could return to its ultimate purpose of creating a place for people. Frontwave Arena is a space built to bring its community together. What began as a complex construction effort evolved into a shared vision for a venue that would energize Oceanside and give residents a gathering place, they could call their own. The arena's impact extends far beyond its walls, becoming a catalyst for connection, pride, and new possibilities.

The state-of-the-art arena has a capacity of 7,000 and includes five bars, four full-service concession stands, a plaza area, and 16 luxury suites. It serves as the home of the MASL's San Diego Sockers, NBA's G-League San Diego Clippers, and as a hub for other North County sports.

Project Manager, Tim DePascale, says "The collaboration between Pascal Steel, Nucor Building Systems, and Level 10 Construction ensured timely and efficient completion, which was a critical milestone in the arena's development." Today, that collaboration has created more than a venue, as it has also created a place that strengthens the community it serves. ●

**ATHLETIC +
RECREATION**



1

ATHLETE PERFORMANCE 1
SPORTS COMPLEX
Redhawk Metal Buildings LLC
Cedarburg, WI

TRIANGLE ROCK CLUB - 2
SALVAGE YARD
Metal Building Specialists LLC
Raleigh, NC

BEAVER LOCAL FIELDHOUSE 3
Brock Builders
Lisbon, OH



2



3



1



2



ATHLETIC + RECREATION

- 1 LINCOLN CENTER**
FED Corporation
Lincoln, MI
- 2 OAW INDOOR SPORTS COMPLEX**
Redhawk Metal Buildings LLC
New Berlin, WI
- 3 SPARC**
Omega Contracting
Brentwood, MD
- 4 CAPE CENTRAL ATHLETICS BUILDING**
Brockmiller Construction, Inc.
Cape Girardeau, MO



CASE STUDY



BETHEL WELLNESS CENTER

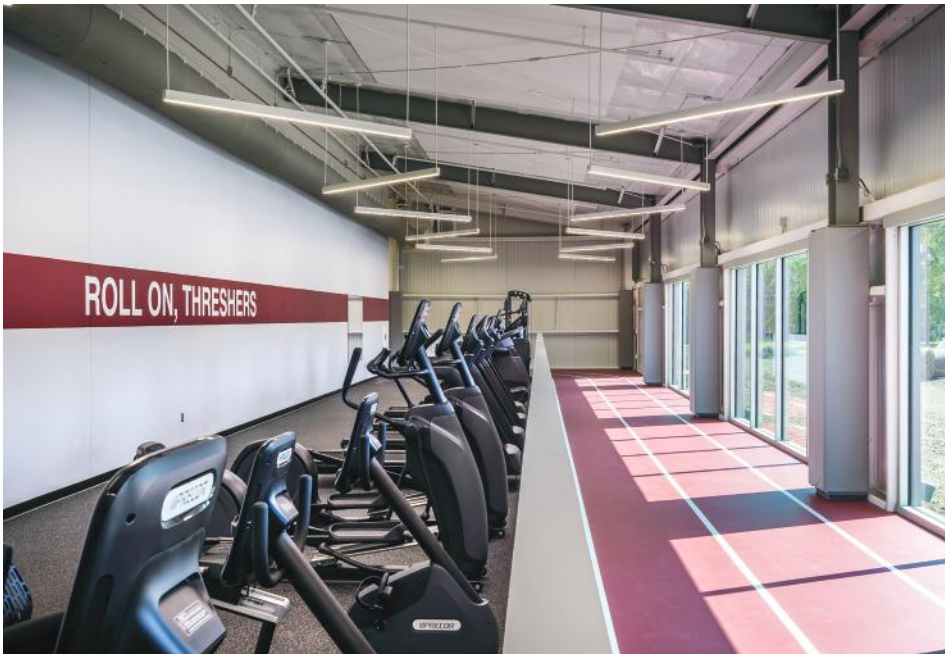
Located at the heart of Bethel College's campus in North Newton, Kansas, the Wellness Center serves as a central hub for student health, recreation, and connection. More than just a building, the Bethel Wellness Center represents a shared vision that brings together thoughtful design and strategic construction coordination. Authorized Nucor Builder, Flint Steel Erectors, of Wichita, Kansas, delivered a flexible, high-performing facility built to serve generations of students and reflect the college's commitment to building a healthier future for their community.

The primary goal of the Bethel Wellness Center was clear: to create a dedicated wellness facility that meets the evolving needs of the college community. The building was designed to house a full gymnasium, an indoor walking track, and a weight room. Prior to the project, fitness and



Flint Steel Erectors, LLC
North Newton, KS







athletic spaces on campus were limited and spread across multiple buildings. The minimal space created scheduling challenges for athletic teams, and students had limited access to workout environments. The Wellness Center addresses these challenges directly, offering centralized, purpose-built spaces that are accessible and designed for a wide range of users.

Beyond physical health, the building plays a vital role in fostering connection and balance on the campus. It creates a gathering place where students can reset between classes, build healthy routines, and engage with one another outside of academic settings. The Wellness Center provides an environment that strengthens the sense of community that defines campus life at Bethel College.

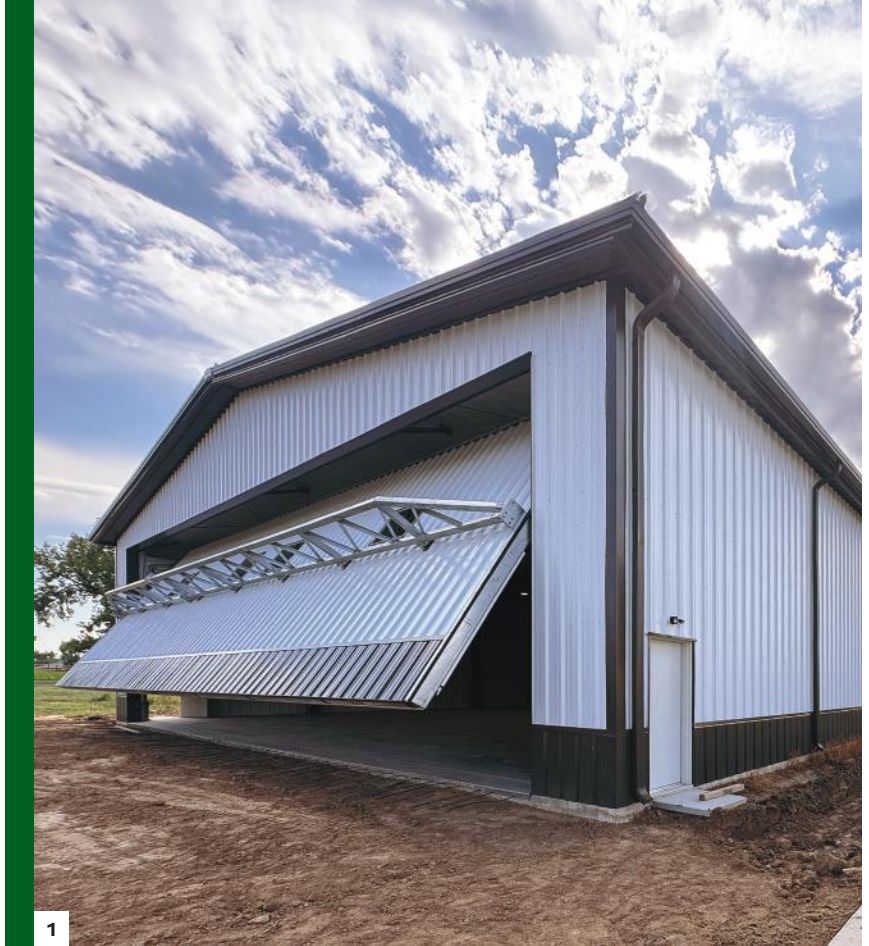
Design decisions were driven by functionality, durability, and long-term performance. At the core of the project stands a primary steel framing system with girts and purlins by Nucor Building Systems, providing a strong structure. Utilizing a clear span framing design was essential, particularly for the gymnasium. Using a PEMB made it possible to achieve the wide-open spaces, creating flexibility for a variety of sports. The exterior utilizes Metl-Span Insulated Metal Panel walls in two colors, delivering a clean, modern aesthetic while providing a durable and efficient building envelope.

As with many complex projects, coordination played a critical role in the success of the Bethel Wellness project. One of the primary challenges involved aligning the efforts of the structural and secondary steel from Nucor with the erection team. Ensuring proper coordination of punch patterns for the secondary steel required precision, communication, and a collaborative mindset. Nucor Building Systems worked closely with Flint Steel Erectors and the broader project team to address these challenges early and effectively.

Flint Steel Erectors played a central role in bringing the Wellness Center to life. Their experience, attention to detail, and ability to manage complex coordination efforts were key to delivering a high-quality finished facility. Stacy Acker, Manager at Flint Steel Erectors, says, "The partnership between Flint Steel Erectors and NBS ensured that structural and secondary steel systems worked seamlessly together, supporting efficient erection and long-term performance."

The Bethel Wellness Center stands as a meaningful investment to the future of the college community. Through thoughtful design, metal building innovation, and a collaborative construction approach, the facility provides students and faculty with a space that supports health, balance, and connection. Bethel College now has a modern wellness facility that reflects its values and enhances everyday life on campus today and for years to come. ●

AVIATION



ADAM-VAN AIR 1

Silverline Structures, LLC
Brighton, CO

AVMATS HANGAR 45 2

Contegra Construction Company
Chesterfield, MO

BAKER 300 AVIATION 3

Doss & Horky, Inc.
Danville, KY

**WEST STAR AVIATION
HANGAR 67 4**

Contegra Construction Company
East Alton, IL









2



4

AVIATION

- 1 KELCH AVIATION**
Redhawk Metal Buildings LLC
Brodhead, WI
- 2 GRAND CANYON
HELICOPTER HANGAR**
Arizona Corporate Builders, LLC
Grand Canyon, AZ
- 3 HANGAR ONE**
Denham-Blythe Company, Inc.
Lexington, KY
- 4 CECIL AIRPORT HANGAR**
Kalex Steel Buildings, Corp
Jacksonville, FL

COMMERCIAL



1

GOLIATH TECH UTAH 1
Salt Lake Construction
Marriott-Slaterville, UT

UNVERFERTH MANUFACTURING 2
CRF Metal Works
Pasco, WA

VANDALIA RENTAL 3
Ferguson Construction Co.
Sharonville, OH

PARR LUMBER DAMASCUS FACILITY 4
Advanced Building Structures LLC
Damascus, OR



2



3



4



1



3



2



4



5

COMMERCIAL

- 1 **U-HAUL**
Kulback's, Inc.
West Seneca, NY
- 2 **ROAD MACHINERY & SUPPLIES CO.**
A.B. Systems, Inc.
Byron, MN
- 3 **FOREVER®**
Bayland Buildings, Inc.
Hobart, WI
- 4 **OMNI ORCHARDS & TAPROOM**
A.B. Systems, Inc.
Rosemount, MN
- 5 **KOUNTRY CABINETS SHOWROOM**
Nuway Construction
Nappanee, IN



CASE STUDY



WHITEFORD KENWORTH

A strong community depends on the infrastructure that keeps it moving. For Rossford, Ohio, the Whiteford Kenworth dealership represents more than a truck sales and service facility; it is a long-term investment in the region's workforce, economy, and transportation network.

The dealership was designed to serve both the local community and the broader transportation industry. With its strategic location near major interstate highways, the facility strengthens Rossford's role as a regional hub for logistics and commerce while creating a modern, welcoming environment for drivers, technicians, and staff.

Nucor Authorized Builder, Nuway Construction of Goshen, Indiana, partnered closely with Whiteford Kenworth and Kenworth Corporate to bring this vision to life. Together, the team focused on creating a



Nuway Construction
Rossford, OH





facility that would not only meet operational demands but also provide a positive, lasting presence in the community. The result is a thoughtfully designed campus that supports efficient workflows, enhances employee experience, and improves service for customers traveling through the region.

From the beginning, the project prioritized people-first design. Kenworth Corporate outlined operational standards that prioritized clear traffic flow, safety, and accessibility—key considerations for a high-traffic service environment. Nuway Construction's design team developed several concepts before landing on a solution that balanced functionality with a welcoming atmosphere. Virtual Reality technology was used to allow stakeholders to experience the facility before construction began, ensuring the final design would meet both operational and human needs.

The dealership is composed of six pre-engineered metal buildings, each with a distinct role, yet intentionally connected to encourage seamless interaction between departments. The ground level spans 73,440 sf, with an additional 8,300 sf mezzanine dedicated to executive offices, creating a combined 81,740 sf facility designed for collaboration and growth. Nuway's President, Andy Nesbitt, says, "We had unique details for columns and portal frame locations. Nucor Building Systems assisted us through this challenge and helped us find the solution."

Inside, the experience is equally intentional. Visitors are welcomed by an expansive showroom and office area featuring 30' ceilings and abundant natural light. Glass overhead doors allow daylight to filter into surrounding corporate offices, sales spaces, the driver lounge, and parts counter, creating an open, connected environment.



Two antique Kenworth trucks displayed on a mezzanine overlooking the showroom celebrate the brand's heritage and reinforce its connection to the trucking community.

Operational efficiency remains central to the facility's purpose. Direct access from the showroom leads to a 26 bay service area equipped with a 5-ton crane and a dedicated wash bay. 21 vertical lift overhead doors support smooth movement throughout the space, while a nearly 20,000 sf parts warehouse ensures timely service without delays. A mezzanine and staircase connect the warehouse to second-floor executive offices, further reinforcing collaboration across teams.

The exterior design reflects the dealership's role as a landmark within the industrial park. Color blocking and panel detailing highlight entrances and signage while reinforcing the Kenworth brand. Visible from two intersecting

interstate highways, the facility stands as a recognizable and confident presence for travelers entering Rossford.

For Whiteford Kenworth, the project represents a commitment to the people who rely on the trucking industry every day. Ron Whiteford, President of Whiteford Kenworth, shared, "This facility reflects the next chapter of innovation and efficiency. It has been carefully designed to streamline workflow and provide a modern, welcoming space for the truck driving community."

The Whiteford Kenworth dealership is a meaningful addition to Rossford, supporting local jobs, strengthening regional transportation infrastructure, and reinforcing the value of thoughtful collaboration. Through strong partnerships and purposeful design, the project demonstrates how metal building solutions can help create spaces that serve industries and communities for years to come. ●



1



2



3

COMMERCIAL

- 1 PACIFICORP JUNIPER RIDGE SERVICE CENTER**
S.R. Turner Construction, LLC
Bend, OR
- 2 101 AG BUILDING N1**
L & L Erectors, Inc.
Pendleton, IN
- 3 SUPREME CONCRETE**
Carbon Steel Buildings Inc.
Acheson, AB

**COMMUNITY +
GOVERNMENT**

FREDERICKTOWN FIRE STATION 1

Brockmiller Construction, Inc.
Fredericktown, MO

**IVY ACADEMY'S SKILLERN 2
ELEMENTARY SCHOOL**

Robert Roberts, LLC
Soddy-Daisy, TN

INDIGO HOPE CENTER 3

Trehel Corporation
Wellford, SC





3



1



3



COMMUNITY + GOVERNMENT

- 1 **CHILTON FIRE DEPARTMENT**
Bayland Buildings, Inc.
Chilton, WI
- 2 **CITY OF WEST KELOWNA
PUBLIC WORKS YARD**
JCI Buildings Ltd
West Kelowna, BC
- 3 **MARION COUNTY EMS
CENTRAL STATION**
Dinkins Construction, LLC
Ocala, FL
- 4 **GLASS HALF FULL**
RNGD Prefab, LLC
Delacroix, LA
- 5 **LEWIS COUNTY CAREER &
TECHNICAL CENTER**
Trace Creek Construction, Inc.
Vanceburg, KY



CASE STUDY

RYSE COMMONS

Designed and funded by a nonprofit youth organization founded by young people in Richmond, California, the RYSE Commons Youth Center stands as a powerful investment in the city's future. Created to serve youth ages 13 to 21, the facility provides a safe, inclusive environment where adolescents can build skills, access resources, and find a sense of belonging.

The primary goal of the project was to deliver a high-performing facility while maintaining strict compliance with safety standards, quality expectations, and agreed-upon schedules and budgets through the collective efforts of many dedicated partners. This collaborative approach ensured that the building process remained efficient without compromising the long-term vision for the space. "From day one, this project was about alignment," said Arthur Vollert, President of Avcon Constructors, Inc. "By fostering a true partnership between all parties, we were able to keep safety, quality, and efficiency at the forefront while delivering a facility that truly serves its community."

The project was anchored by the strong working relationship between Nucor Authorized Builder, Avcon Constructors, Inc., of Vineburg, California, and Nucor Building Systems. Nucor worked closely with the project team to translate early architectural concepts into detailed erection drawings that clearly reflected the architect's vision. Jason Crumbley, Avcon's Project Manager, said, "Our District Sales Manager, Jay Nelson, and his team played a major role in coordinating efforts and keeping everything aligned. Once the PEMB was approved, Nucor met a very



Avcon Constructors, Inc.
Richmond, CA



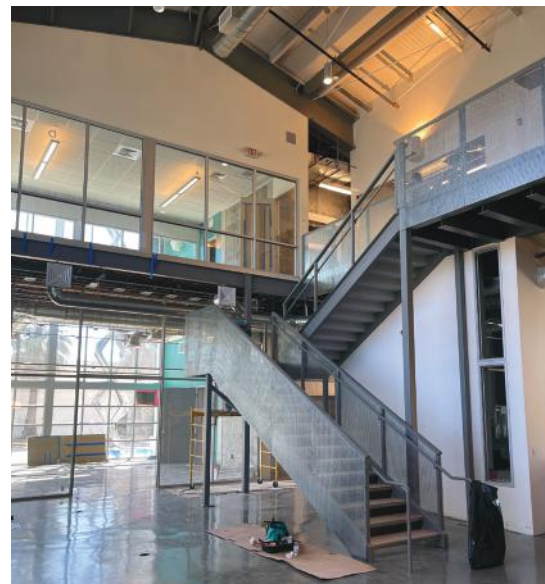


aggressive fabrication and delivery schedule, which allowed the project to start strong and stay on track.”

The RYSE Commons Youth Center was designed with one purpose in mind: to serve the young people of Richmond. The facility offers a wide range of programs, services, and amenities that help youth stay engaged, supported, and off the streets. The building includes classrooms, a computer lab, music and recording rooms with state-of-the-art equipment, an art studio, a performing arts space, a Zen garden, basketball court, courtyard, and kitchen. In addition, the center provides access to teachers, mentors, equipment, and essential services, including mental health therapy and a small medical clinic. Spanning 11,457 sf, the Youth Center features a two-level layout with a

mezzanine-style second floor constructed using Nucor products, along with a small exterior deck. The upper level is fully accessible via stairs and a hydraulic elevator, ensuring inclusive access throughout the facility.

The design of the RYSE Commons Youth Center intentionally showcases exposed steel building components on both the interior and exterior, reinforcing a modern aesthetic. A key priority for the owner and architect was the seamless integration of the PEMB structure with architectural finishes, including framing, sheetrock, ceilings, windows, storefronts, and paint. Large windows, storefronts, and transparent roll-up doors were incorporated throughout the facility to create curb appeal while supporting energy-efficient goals through natural lighting and passive



heating. These elements not only enhance the building's appearance but also create welcoming, light-filled spaces that encourage engagement and connection. The flexibility of a pre-engineered metal building made it possible to efficiently incorporate these features that were central to the project's aesthetic and functional goals.

Sustainability efforts were also a key component when designing the project. Several LEED-aligned strategies were incorporated into the design and construction process, including recycling at least 65 percent of on-site demolition debris. Rainwater management was addressed through flow-through planters with bio-retention soil and gravel, which filter stormwater before it enters local waterways. Additionally, a minimum of

50 percent of the site was designed with permeable materials like permeable concrete, asphalt, gardens, and landscaped islands, allowing rainwater to naturally percolate into the ground and reduce runoff.

Built by and for the community, the RYSE Commons Youth Center represents what is possible when thoughtful design, strong partnerships, and a shared mission come together.

"This building is more than a structure. RYSE Commons is a resource," Vollert added. "It gives young people a place where they can feel safe, supported, and inspired to focus on a positive future." The facility now stands as a cornerstone for youth development in Richmond, providing opportunities and aspirations for future generations. ●

INDUSTRIAL + MANUFACTURING

PREMIER PAN 1

DiMarco Construction Inc.
Crescent, PA

WOLF RIVER MACHINE 2

Bayland Buildings, Inc.
Greenville, WI

MCR PROPERTIES 3

REDWIRE SPACE
Mick Rich Contractors, Inc.
Albuquerque, NM





3



1



3





2



4

INDUSTRIAL + MANUFACTURING

- 1 TRU FIT CORPORATION EXPANSION**
Simonson Construction Services, Inc.
Medina, OH
- 2 I.S.I. ROBOTICS (INTEGRATED SYSTEMS)**
North Industrial Machine, LLC
Huntsville, SC
- 3 VANPACKER**
American Eagle Buildings, Inc.
Buda, IL
- 4 PERFORMANCE COATINGS**
Bayland Buildings, Inc.
Oconomowoc, WI



1

INDUSTRIAL + MANUFACTURING

BUCKEYE FABRICATION 1
Ferguson Construction Co.
Springboro, OH

EVERLAST ROOFING 2
Bruns General Contracting, Inc.
Eaton, OH

LANCO SHEDS 3
DanCo Construction, LLC
New Holland, PA

CURTIS STEEL 4
Urban Construction Southwest
Waller, TX



3





CASE STUDY



FLINT ENERGIES

For energy providers, infrastructure extends beyond physical structures; it serves as the essential foundation that ensures communities remain connected, supplied with power, and equipped for future needs. The Flint Energies Service Center Operations Complex was designed with that responsibility in mind. The campus brings together multiple facilities totaling approximately 166,000 square feet, supporting daily operations, maintenance, and field service functions critical to serving the surrounding region.

Delivered through a strong partnership between authorized General Contractor Parrish Construction and Nucor Building Systems, the project includes three Pre-Engineered Metal Building (PEMB) systems; Buildings B, C, and D—alongside a conventional corporate office structure.



Parrish Construction Group, Inc.
Fort Valley, GA





Together, the campus functions as a centralized hub that enables Flint Energies to operate efficiently while remaining responsive to the needs of the communities it serves.

The main objective of the project was straightforward yet significant: to create a facility that meets the full operational needs of an energy distribution company. Buildings B, C, and D were designed as pre-engineered metal buildings to house essential functions, including a maintenance and paint shop, service and lineman operations, covered storage and wash bays.

"This complex was purposefully designed to support Flint Energies daily operations," stated Nathan Cyr, Metal Building Project Manager at Parrish Construction. "The layout and metal building systems are structured to enhance team efficiency, enable proper equipment maintenance, and facilitate rapid response in the field, ultimately benefiting the communities that Flint Energies serves."

Metal was selected as the primary building solution due to the project's structural and operational requirements. Large clear spans were necessary to support multiple overhead cranes, while expansive open areas were critical for vehicle movement and equipment access. Building C, which serves as the service and lineman operations' facility, features a massive open canopy designed to accommodate trucks and field vehicles. The structure was constructed using a lean-to framing system, allowing for wide-open coverage without interior obstructions, which is an ideal solution for staging, loading, and daily fleet activity.

The Flint Energies project marked an important milestone for Parrish Construction as it was the company's first major pre-engineered metal building project completed in partnership with Nucor Building Systems. "Parrish Construction did an outstanding job on this project," said Jeff White, Nucor District Sales Manager. "This was their



first major Pre-Engineered Metal Building project with Nucor Building Systems, and the quality of execution, coordination, and attention to detail really stood out. It was a strong collaboration from start to finish."

With support from Nucor's engineering expertise and coordinated project execution, the team delivered a high-quality facility that met Flint Energies needs without major construction challenges. "Partnering with Nucor Building Systems was a great experience for our team," said Nathan Cyr. "Their support and knowledge helped make this project a success."

As an energy provider, Flint Energies prioritized building performance by utilizing insulated metal panels and insulation to achieve robust R-values, thereby supporting both energy efficiency and sustained operational excellence across its campus. By streamlining

maintenance, service, and operations within a purpose-built facility, Flint Energies has enhanced its capacity to serve the region. The integrated campus keeps crews prepared, ensures equipment is well maintained, and supports the reliable operation of essential services—all contributing to reliable energy delivery for residential, commercial, and public sector clients.

Through thoughtful design, strong partnerships, and a focus on functionality, the Flint Energies Service Center Operations Complex stands as an investment not only in infrastructure, but in the people and communities that rely on it every day. ●



OFFICE

PARKER COATINGS 1
Bayland Buildings, Inc.
De Pere, WI

SLC NEW OFFICE BUILDING 2
Salt Lake Construction
Ogden, UT

ROHE ASPHALT OFFICE & MAINTENANCE GARAGE 3
Maxwell Construction, Inc.
Sunman, IN



1



2



3



1





OFFICE

- 1 CLEARSPAN OFFICE**
Clearspan Steel, LLC
Kennewick, WA
- 2 KSC VC ADMIN BUILDING**
Brevard Constructors
Kennedy Space Center, FL
- 3 ROUNDROCK FLEX 221 SHELL BUILDING**
Metal Building Specialists, LLC
Raleigh, NC

RELIGIOUS

WAYPOINT 1
Landmark Builders
Goshen, IN

FAITH MEMORIAL 2
BMB, Inc.
Danville, VA

PINE HILLS CHURCH 3
Arnold Company, Inc.
Fort Wayne, IN



1



2







RELIGIOUS

- 1 HIGHLANDS CHURCH
YOUTH ADDITION**
Legacy Design & Development LLC
Cumming, GA
- 2 WESTWOOD ALLIANCE CHURCH
RENOVATION & EXPANSION**
Simonson Construction Services, Inc.
Ontario, OH

**WAREHOUSE +
DISTRIBUTION**



UNIVERSAL CADENCE 1

Roncelli, Inc.
Stanton, TN

**CRYSTAL VALLEY
CHEMICAL WAREHOUSE 2**

Greystone Construction Company
Madelia, MN

**UNION ELECTRONICS
DISTRIBUTORS 3**

Integrated Building Systems, Inc.
Beecher, IL





3





WAREHOUSE + DISTRIBUTION

- 1 4-IMPRINT**
Redhawk Metal Buildings LLC
Oshkosh, WI
- 2 TYRONE SOUTH 74
BUSINESS PARK**
Goodman Construction, Inc.
Tyrone, GA
- 3 STONHARD WAREHOUSE
ADDITION**
Felderman Design-Build
Fort Wayne, IN

WAREHOUSE + DISTRIBUTION

JAMIE CALDER #1 1
DiMare Construction
Bunnell, FL

KENONA INDUSTRIES 2
D & K Engineered Construction, Inc.
Grand Rapids, MI

NORDIC WASTE MANAGEMENT 3
Greystone Construction Company
Norwood Young America, MN







1



2



WAREHOUSE + DISTRIBUTION

- 1 ATRIUM INDUSTRIAL**
Dinkins Construction, LLC
Ocala, FL
- 2 SCHNIPKE TIRE**
Miller Contracting Group, Inc.
Cloverdale, OH
- 3 FRITO LAY
EXCHANGE CENTER**
Kulback's, Inc.
Fredonia, NY



a **NUCOR** company