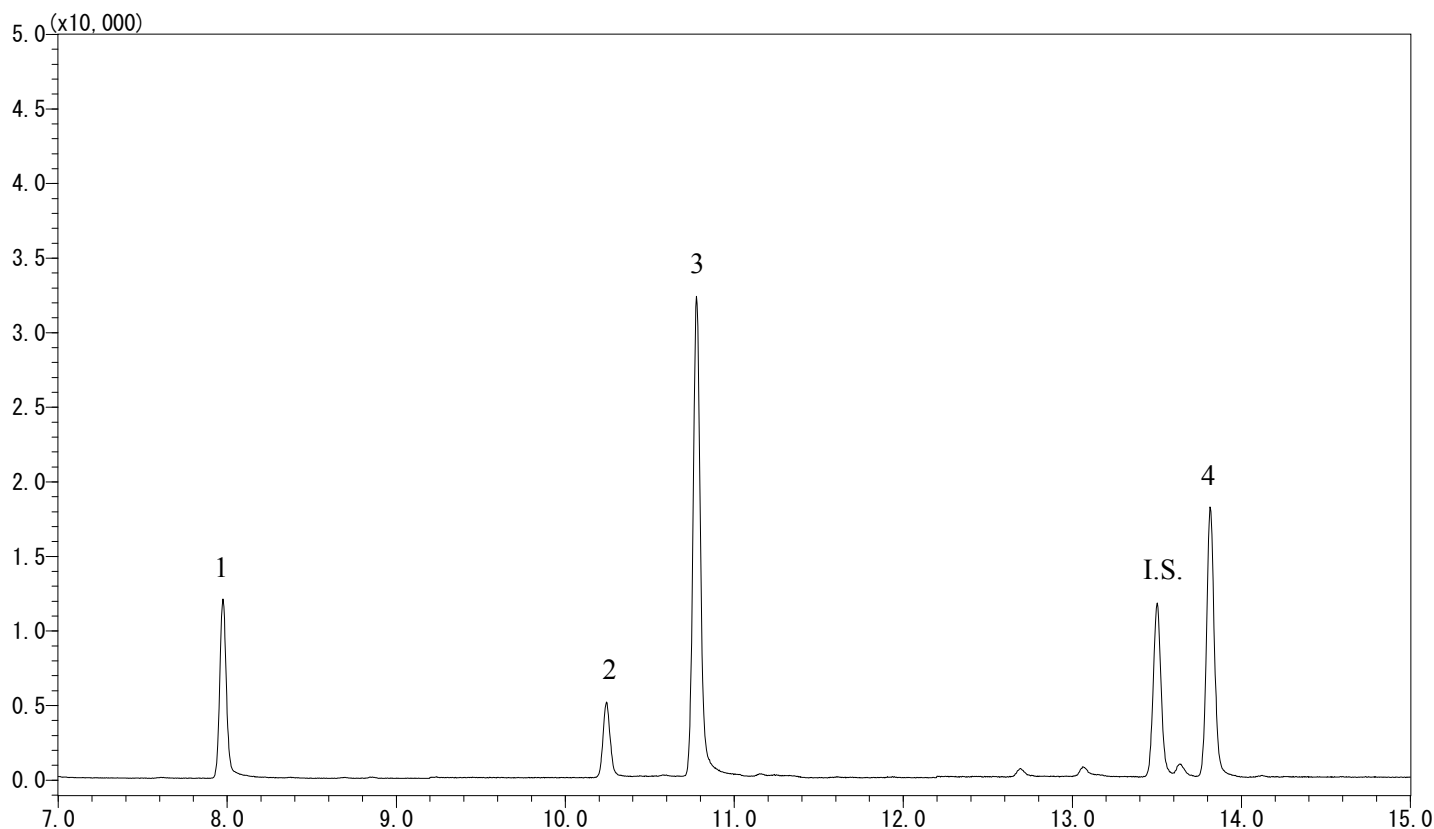


# InertSearch™ for GC

InertCap® Applications

## Haloacetic acids

Data No. GA 233-0644



### Conditions

**System** : GC-MS  
**Column** : InertCap 1MS  
0.25 mm I.D. x 30 m df = 1.0 µm  
**Col. Cat. No.** : 1010-12145  
**Col. Temp.** : 40 °C (1 min hold) - 5 °C/min - 120 °C - 20 °C/min - 240 °C (2 min hold)  
**Carrier Gas** : He 36.0 cm/sec  
**Injection** : Pulsed Splitless (150kPa until 1.5 min) 1min  
250 °C  
**Detection** : MS SIM  
Interface Temp. 280 °C  
**Sample Size** : Analyte in MTBE  
1 µL

**Analyte** : 1. Chloroacetic acid (0.25 µg/mL)  
2. Bromoacetic acid (0.25 µg/mL)  
3. Dichloroacetic acid (0.25 µg/mL)  
4. Trichloroacetic acid (0.25 µg/mL)  
I.S. 1,2,3-Trichloropropane (0.5 µg/mL)  
(Methylester Deriv. by Diazomethane)