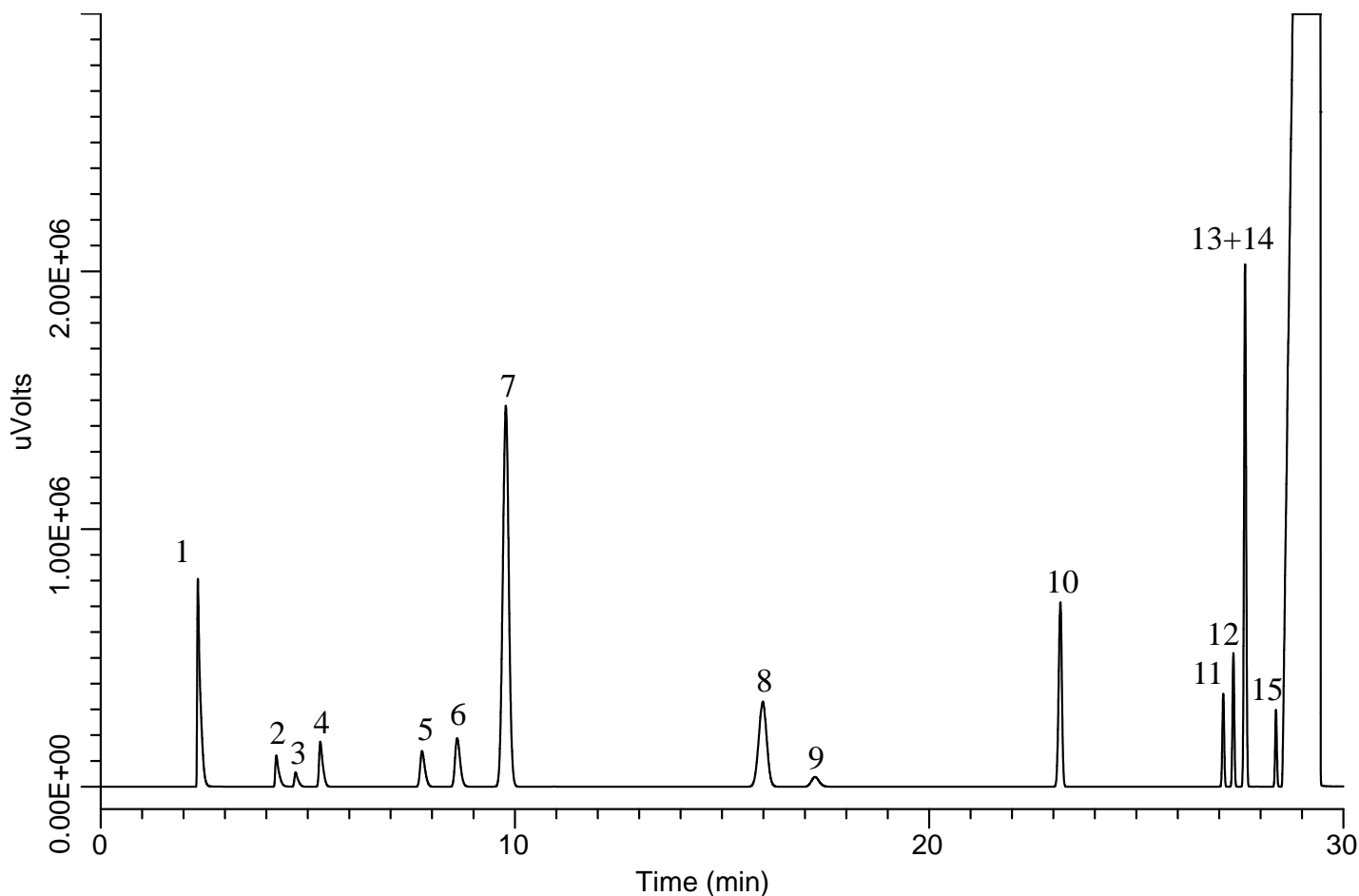


# InertSearch™ for GC

InertCap® Applications

## Residual solvents in pharmaceuticals (Class 2A)

Data No. GA 287-0904



### Conditions

**System** : GC4000 Plus-FID  
**Column** : InertCap 624MS  
0.32 mm I.D. × 30 m df = 1.80 µm  
**Col. Cat. No.** : 1010-64747  
**Col. Temp.** : 40 °C(20 min) - 10 °C/min  
- 240 °C(20 min)  
**Carrier Gas** : He 2.20 mL/min  
**Injection** : Split 20:1  
140 °C  
**Detection** : FID Auto Range  
250 °C  
**Sample Size** : 1.0 µL  
Analyte in Dimethyl sulfoxide

### Analyte

1. Methanol	(15.0 mg/mL)
2. Acetonitrile	(2.05 mg/mL)
3. Dichloromethane	(3.00 mg/mL)
4. <i>trans</i> -1,2-Dichloroethylene	(4.70 mg/mL)
5. <i>cis</i> -1,2-Dichloroethylene	(4.70 mg/mL)
6. Tetrahydrofuran	(3.45 mg/mL)
7. Cyclohexane	(19.4 mg/mL)
8. Methylcyclohexane	(5.90 mg/mL)
9. 1,4-Dioxane	(1.90 mg/mL)
10. Toluene	(4.45 mg/mL)
11. Chlorobenzene	(1.80 mg/mL)
12. Ethylbenzene	(1.84 mg/mL)
13. <i>m</i> -Xylene	(6.51 mg/mL)
14. <i>p</i> -Xylene	(1.52 mg/mL)
15. <i>o</i> -Xylene	(0.98 mg/mL)