



ANNUAL CHURCH REPORT 2025



REDEMPTION, JUSTICE, AND EMPOWERMENT FOR ALL PEOPLE.



The Bishop's Preface

“And God is able to bless you abundantly, so that in all things at all times, having all that you need, you will abound in every good work.”

— 2 Corinthians 9:8 (NIV)

Beloved Church Family,

Grace and peace be unto you from God our Father and His Son, the Lord and Savior, Jesus Christ.

As we gather for our 2026 Annual Business Meeting, my heart is filled with deep gratitude and sincere appreciation for each of you. This past year has truly been a testament to the Lord's abundant blessings upon Center of Praise Ministries. Through your generosity, your faithfulness, and your unwavering commitment, we have witnessed God's hand moving mightily in our midst.

Because of your giving, we have been able to continue the work of ministry, expand our reach, and serve our community with compassion and excellence. Every seed sown—no matter the size—has played a vital role in advancing the Kingdom of God through this house. Let me assure you: each financial gift matters. Your stewardship is not only seen but it is also honored by God.

As we reflect on what has been accomplished, we must also look ahead with vision and determination. There is still much more to be done. The call on this ministry remains great, and the opportunities before us are even greater. Yet I am confident that together, we are well able to meet the challenge.

We will continue forward through perseverance, exercising prudence in our decisions, and maintaining a prayerful pursuit of God's will in all things. When we remain united in purpose and spirit, there is no limit to what God can do through us. Indeed, we can do more—together.

Thank you for your continued faithfulness, your generosity, and your love for this ministry. I encourage you to remain steadfast, to keep trusting God, and to continue giving as He leads you. The best is yet to come.

With gratitude and blessings,

Bishop and Mrs. Parnell M. Lovelace, Jr., D.Min, Ph.D

Founding and Senior Pastor

Center of Praise Ministries





LEGACY CENTER

SERVING THE COMMUNITY WITH PURPOSE

The Legacy Center is a welcoming community resource operated by Center of Praise Ministries, dedicated to service, connection, and care. The Center provides accessible space for nonprofit organizations, ministries, families, and community partners to gather, learn, celebrate, and heal.

COMMUNITY PARTNERS

The Legacy Center houses and supports a range of organizations serving the broader community, including: **100 Black Men, Pico, Carrie's Touch, Strive Community, Music Science Lab, Busy Bee Day Care, Counseling Ministry, and Miracle University.**

These partnerships allow the Legacy Center to function as a hub for education, youth development, family support, and community advancement.

FACILITIES & USE

The Legacy Center offers:

- Office space for community organizations
- Classrooms for training, workshops, and weekly programs
- A Social Hall for large gatherings and special events
- A Sanctuary and Chapel for weddings, memorials, and celebration of life services

Busy Bee Day Care and Miracle University utilize the facility Monday through Friday. Additional spaces are available for weddings, receptions, home-going celebrations, repasts, training, and community events.

2025 COMMUNITY IMPACT

Celebration of Life Services

- 20 Homegoing and Memorial Celebration of Life services served both COP members and non-members
- Repasts were often hosted on-site following services

Weddings & Family Celebrations

- 4 weddings were hosted at the Legacy Center

Health, Wellness & Outreach

- 2 American Red Cross Blood Drives
- Weekly Celebrate Recovery meetings
- Community wellness event on Mental Health, Bereavement, Palliative Care, and Advance Planning in partnership with YoloCares, with families from Yolo County and Center of Praise members attending.
- CPR training for community members and Center of Praise Ministries

Youth & Ministry Programs

- Weekly Youth and Young Adult Ministry gatherings
- Quarterly partnership meetings with Legacy Center Cop staff and partners

LEADERSHIP & CONTACT

The Legacy Center is administered by **Pastor La Vetta Coleman**, Ministry Coach for Bereavement Care, Center of Praise Ministries. Contact: pastorcoleman@cop.church

The Legacy Center serves as a trusted bridge between faith and community providing a dignified, welcoming space for celebration, healing, education, and connection. Through collaboration and compassionate stewardship, the Legacy Center continues to make a meaningful impact across the region.



SENIOR LEADERSHIP TEAM

EXECUTIVE REPORT



FACILITIES / SAFETY COORDINATOR

Elder Anthony Simpson

The Facilities and Safety team remained focused on maintaining a safe, organized, and well prepared campus environment throughout the year. The primary objective has been to support church operations by ensuring safety compliance, maintaining facility readiness, and assisting teams during services and events.

Key Objectives and Accomplishments

A key component of facility management is assessing and addressing system breakdowns to ensure the functionality of essential equipment. This includes:

Maintain Campus Safety and Compliance

One of the main objectives was to ensure that all safety systems and equipment across the campus remain properly inspected and operational. Coordination was completed with the fire extinguisher inspection service to conduct the annual inspection and update of fire extinguishers in all buildings. In addition, collaboration with the fire system inspector ensured the kitchen fire suppression system at the Legacy Center was inspected and maintained to meet safety standards.

Monthly safety inspections were conducted in all buildings to identify potential hazards and ensure compliance with safety protocols.

Strengthen Emergency Preparedness

Another key objective was to improve campus preparedness for emergency situations. This included organizing and conducting the annual Emergency Evacuation Drill for 2025. Preparations included coordinating practice drills and facilitating the full evacuation exercise to help ensure that teams and members understand emergency procedures and exit routes.

CPR training opportunities were also coordinated with Professional CPR to help equip team members and volunteers with life saving emergency response skills.

Support Church Operations and Events

Facilities support was provided for various church activities and events throughout the year. Assistance was given to the Bereavement Team during home going services to ensure that facilities were prepared and safety considerations were in place.

Support was also provided for the Fun Day in the Park event through event setup and breakdown assistance to help ensure a smooth and safe experience for attendees. Inventory management was conducted for baptism and team member shirts, with orders placed as needed to maintain adequate supplies.

Improve Campus Transportation Coordination

Work was completed with the transportation team to help improve the flow of people movers throughout the campus. This included identifying appropriate transportation routes and developing maps outlining designated pick up and drop off locations to support safe and efficient transportation for members and visitors.

Support Facility Maintenance and Team Development

Ongoing support was provided to maintenance personnel with various facility related projects across the campus as needed. In addition, participation on the onboarding committee helped support the training process for new members who desire to serve at COP, ensuring that safety procedures and facility expectations are clearly communicated.

This year's efforts focused on strengthening campus safety, supporting church operations, and improving emergency preparedness. Moving forward, the Facilities and Safety team will continue working to maintain a safe environment while supporting the needs and activities of the Center of Praise Ministries community.

OFFICE OF MINISTRY ADVANCEMENT & DEVELOPMENT

A Message from Pastor Phyllis Towles, Director

The Office of Ministry Advancement and Development exist to strengthen the infrastructure of Center of Praise so that our mission can move forward with clarity, excellence, and measurable impact.

Our mandate is simple and strategic: To ensure that every system, every leader, and every partnership supports our mission to develop, multiply, and send out disciples of Jesus Christ for the work of the Kingdom.

2025 was not a year of activity. It was a year of alignment, expansion, and measurable advancement.

2025

Impact Snapshot

Office of Ministry Advancement & Development



Cultivating Our Future. Building Capacity. Advancing Impact

**Strategic Focus: Where Your Generosity Went****Empowering Leaders**

5 New Coaches Onboarded,
10 Monthly Trainings,
Level Up Conference
Conference (4.75/5 Stars)

**Community & Justice**

UC Davis & Biola Partnerships,
Imani Graduation,
Imani Graduation,
Homebound Prayer Line (13/week)

**Mobilizing for Service**

Mega Ministry Fair
(300+ connections),
Partner Integration (60+)

Together, we are cultivating a future that honors God and serves generations.
Pastor Phylis Towles, Director of Ministry Advancement

When you review these outcomes, please see your fingerprints throughout. Your generosity, your prayers, and your service are woven into every milestone.

DEVELOPING LEADERS: STRENGTHENING INTERNAL CAPACITY

Healthy ministry requires healthy leadership.

This year, my office focused on building the leadership core that supports our Serving and Generational Ministries.

Direct Coaching & Onboarding

- 5 new Serving Ministry Coaches onboarded
- Monthly leadership development sessions implemented
- Ongoing organizational support provided across ministry teams

Impact: Volunteer teams are now led with increased clarity, accountability, and spiritual maturity, strengthening the culture of excellence across COP.

2025 LEVEL UP CONFERENCE

Theme: Mission. Mindset. Momentum.

- 4.75/5 participant rating
- Two days of leadership formation for ministry and marketplace leaders
- Immediate application tools delivered for local ministry impact

Impact: Over 50 pastors and leaders returned to their respective churches and ministries equipped to serve with renewed confidence and strategic focus.

“Level Up is where we are poured into so that we can pour out. I left with clarity, tools, and the confidence to lead my team more effectively.” — Ministry Leader, COP

EXPANDING ACCESS: EDUCATION & GENERATIONAL ADVANCEMENT

We believe that to Educate Passionately is to empower future leaders.

Lead the Way Tour | Biola University Partnership

- 380+ regional leaders hosted
- Featured scholars, including Dr. Ed Stetzer
- Positioned COP as a regional hub for theological engagement

Impact: Strengthened the intellectual and spiritual witness of the local church across our

region.

Inaugural Called to College | UC Davis Partnership

- 100+ families engaged
- Direct access to admissions leadership and university experts

Impact: Higher education became tangible and accessible for our families, reinforcing our commitment to generational advancement.

“Having direct access to UC Davis admissions leadership removed fear and replaced it with direction. Our family walked away with a real plan.” — COP Parent

IMANI Graduation Celebration

- 34 graduates honored
- Academic achievements from High School to Doctoral degrees

Impact: A visible expression of our value to Advance Generationally and build a long-term legacy.

Mobilizing the Body: Service & Care**Mega Ministry Fair**

- 300+ individuals connected to ministry opportunities
- Impact: Increased volunteer activation ensures that ministry growth is sustainable and shared.

Partnership Connection

- Ministry Coaches welcomed 30 collective new partners from 2025 into a structured discipleship pathway

Impact: Transition from attendance to engagement, from membership to meaningful partnership and relationships.

Stewardship & Vision Forward

Your investment of time, talent, and treasure enabled measurable outcomes in leadership development, educational access, and congregational mobilization.

As we look to 2026, our focus will be:

- Deepening leadership formation
- Strengthening systems and automation for greater efficiency
- Expanding strategic partnerships
- Enhancing volunteer sustainability
- Increasing measurable impact across ministries

We are not simply managing programs. We are building the organizational capacity needed to realize Redemption, Justice, and Empowerment for all people.

Thank you for your partnership in advancing the Kingdom. Together, we are cultivating a future that honors God and serves generations.

**2025 COP MINISTRY COACHES
END-OF-YEAR REPORT**

2025 MINISTRY IMPACT & ACHIEVEMENTS

At Center of Praise, our mission is not defined by activity, but by transformation. While our financial reports reflect our stewardship of resources, the following pages reflect our stewardship of souls and community. In 2025, every ministry, from those serving on our front lines to those working behind the scenes, was anchored in our core strategy: He’s Here... We Worship, He Knows... We Learn, and He’s Able... We Serve.

This year, we moved beyond maintenance and into a season of intentional multiplication. You will see this reflected in the 43% growth of our Security volunteer base, the spiritual revival within our Nex Gen Youth, and the expanded global reach of our mission partnerships. Every milestone recorded here is a direct result of our community choosing to Give Generously and Reach Intentionally.

As you read through these reports from our Ministry

The "Fingerprint" (Action)	The "Fruit" (Impact)
Generous Outreach	200+ families served at Eggstravaganza
Intentional Growth	43% increase in Security personnel
Discipleship Multiplying	60% of new Worship recruits are under age 25
Empowerment in Action	77 job seekers connected to 9 organizations
Unconditional Care	18 medical/safety incidents handled with compassion

Coaches, we invite you to look for your own “fingerprints” on these successes. These are not just departmental updates; they are a collective testimony of Redemption, Justice, and Empowerment in action. Together, we are not just running programs; we are developing, multiplying, and sending out disciples for the work of the Kingdom.

ANY MAN MINISTRY

- Under the leadership of Pastor Jonathan Strickling, the Any Man Ministry reached a pivotal milestone in 2025 with the Brother’s Keeper Men’s ADVANCE Conference. This gathering of 65 men was designed as a sacred space to “steal away with God,” allowing brothers to connect, refresh, and advance spiritually together. By fostering an environment where men can grow in unity, we are directly fulfilling our mission to develop and multiply disciples who are anchored in Christ.
- The impact of this retreat has extended far beyond a single weekend. A powerful outgrowth of the ADVANCE is the new Pre-Celebration Prayer led by the men every Sunday. By establishing the spiritual atmosphere before service begins, these men are leading the congregation with a growing confidence in Christ. This ministry of presence demonstrates our strategy that HE’S HERE... We Worship, as our men take their rightful place as spiritual pillars within the COP family.

WORSHIP AND FINE ARTS

- In 2025, Elder Christopher McEwen and the Worship and Fine Arts team intentionally shifted the atmosphere from “performance” to “encounter.” A significant achievement was the measurable growth in both musical excellence and spiritual maturity. The VOP Choir mastered their craft with improved tonal quality and blend, while our worship teams

deepened their spiritual preparation. Furthermore, we successfully onboarded five new members through a strategic recruitment system, ensuring we continue to Reach Intentionally.

- The impact of this growth is evident in our Sunday experiences, where the focus on the “heart of worship” has created an environment where God is glorified, and people are truly blessed. We are especially encouraged to see a “revival of interest” among young adults; 60% of our new recruits are under 25. This success allows us to Advance Generationally, cultivating a ministry that feeds our current members while actively drawing in the future of the Kingdom.

JUSTICE RESPONSE TEAM (JRT)

- The Justice Response Team, led by Shannon Coleman, achieved a landmark success in 2025 with the inaugural Emergency Preparedness Fair. By bringing together the Sacramento City Fire Department, Police K-9 units, and drone demonstrations, JRT created a welcoming, proactive environment for the community to learn vital safety skills. This initiative perfectly aligns with our vision of Empowerment for All People, moving our neighbors from a reactive posture to one of prepared protection.
- The impact of JRT this year also extended into the digital space through the “Know Your Rights” and “Lines of Power” webinars. These sessions provided critical guidance on immigration, criminal law, and political representation, specifically empowering Black and Brown communities. By addressing these systemic challenges, JRT is Educating Passionately and ensuring that our congregation is equipped with the knowledge necessary to seek Justice and navigate the complexities of our current social landscape.

YOUNG ADULTS

- Led by Adebade Ilori, the Young Adult ministry saw significant growth in 2025 through the launch of bi-weekly OmniGroups. These gender-specific virtual spaces provided a consistent, safe environment for young adults to be transparent about their challenges and grow in their faith. By creating these accessible spaces for healing and connection, we are effectively developing disciples in a way that meets them exactly where they are.
- This intentionality has resulted in a robust, spiritually grounded community and a noticeable increase in

young adult attendance during church celebrations. The impact is evident in many who have experienced personal deliverance and a true sense of belonging. As these young adults find their footing, they are increasingly utilizing their spiritual gifts to serve in other areas of the church, embodying our mission to multiply and send out workers for the Kingdom.

SECURITY MINISTRY

- In 2025, the Security Ministry, coached by Derrell Peterson, underwent a professional transformation through expanded Training and Capability Building. By implementing a quarterly training cadence focused on de-escalation, situational awareness, and emergency medical response, the team has significantly enhanced its skill set. Parallel to this growth in capability, we saw a 43% increase in our volunteer base, moving from 14 to 20 active members dedicated to the safety of our church family.
- The impact of these improvements is a heightened level of Incident Preparedness and response readiness across all COP celebrations and events. Through strengthened partnerships with the First Responders and Greeters, we have established clear reporting channels and faster notification to leadership. This ministry allows our congregation to worship with peace of mind, knowing we are Caring Unconditionally for their physical well-being.

BUSINESS NETWORK

- Dr. Dene’ Starks-McGee and the Business Network team hit a major milestone in August with our first-ever Job Fair. By hosting 9 hiring organizations and 77 job seekers, the ministry acted as a bridge between talent and opportunity. This event was a practical application of our vision for Empowerment, providing tangible resources for economic advancement within our community.
- The impact was life-changing: roughly 10% of seekers (7 people) secured employment as a direct result of the fair. By facilitating these connections, the Business Network is helping our members thrive outside the church walls, proving that when we Reach Intentionally, we can change the trajectory of families and support the work of the Kingdom through vocational stability.

NEX GEN YOUTH (12-18)

- Under the leadership of Aaron Cardoza, the Nex Gen Youth ministry experienced a transformative Bible Empowerment Week. During this focused time, our youth moved beyond Sunday school lessons to deeply engage with the Book of Psalms. This achievement resulted in a 10% increase in youth participation, as students felt empowered to share what they learned with both their peers and the adults in the congregation.
- The impact of this week was seen in the newfound confidence of our students. Many youth who were previously reserved felt comfortable enough to speak in front of large crowds, signifying that COP is a safe space for them to find their voice. By providing consistent Bible study and “self-love” mentorship, we are Advancing Generationally and ensuring our youth feel the compassion and support of the broader church body.

1ST RESPONDERS

- Coached by Lisa Carlson, our 1st Responders remained a vital “front-line” ministry in 2025. The team responded to 18 incidents across the Cathedral, Legacy Center, and Laguna Town Hall (FunDay). Whether the situation required a simple check-in or a call to 911, our responders acted with professional precision and spiritual grace, ensuring that every individual supported is doing well today.
- The impact of this ministry is the assurance of immediate care delivered with kindness. By being present at every major gathering, the 1st Responders exemplify our value to Care Unconditionally, providing a safety net of compassion that allows our community to gather in confidence.

ENGAGED AND MARRIED COUPLES

- Elder Jacqueline Crooks and the Couples Ministry successfully hosted the Couples Conference in 2025, a dedicated time for investment in the sanctity of marriage. By providing specific resources and communal support, the ministry helped couples navigate the complexities of modern life while keeping the Lord at the center of their unions.
- The impact of this conference is the fortification of the family unit. As couples build stronger, Christ-centered marriages, they create a stable foundation for the next generation. This ministry continues to Educate

Passionately on the biblical principles of partnership, ensuring that our homes are places of Redemption and Empowerment.

CHILDREN’S MINISTRY

- Led by Pastor Kimberlee Blakey, the Children’s Ministry continues to be a vibrant gateway for families at COP. A standout achievement in 2025 was the Annual Eggstravaganza, which hosted over 200 people. This event serves as a significant “Front Door” for our community, allowing us to Reach Intentionally to families with young children.
- The impact of our work is felt by parents who are supported in their desire to raise their children in the faith. By providing high-quality, age-appropriate, Jesus-centered learning, we are Advancing Generationally and making the Gospel accessible to our little ones on their own level.

TRANSPORTATION MINISTRY

- The Transportation Ministry, led by Shaquille Fisher, saw a significant upgrade this year with the addition of weather skirts and side steps for our people movers (aka, golf carts). While these may seem like small physical additions, they represented a major step in our ability to Serve our members regardless of the weather or physical mobility challenges.
- The impact has been a measurable increase in ridership and cart utilization. By making our campus more accessible, we are Caring Unconditionally for our seniors and those with disabilities, ensuring that the distance between the parking lot and the sanctuary never stands in the way of someone experiencing the presence of God.

GLOBAL OUTREACH

- 2025 was a “RESET” year for Global Outreach under Elder Bunmi Brown-Dawson. A significant achievement was the transition from Yaaka Afrika to GoMission, assuming all administrative roles and creating a robust profile for future marketing and fundraising. This foundational work has allowed us to operate independently, covering mission fields in Uganda, Haiti, and Sierra Leone.
- The impact of this transition is the establishment of high-level accountability and transparency. With full back-office access, we can now track exactly how monthly support is generated and wired to our

partners. This administrative agility is the “bridge” that will allow us to relaunch fully in 2026 as COP Global, fulfilling our mission to send out disciples to the ends of the earth.

extra measure of financial security to our tithes and offerings. This demonstrates our core value to Give Generously while acting with wisdom and excellence in our operations.

PASTORAL AIDS

- Elder Orlando and Elder Typhannie Fowler lead a team defined by faithfulness and consistency. Their significant achievement in 2025 was their unwavering dedication; week after week, volunteers showed up with a “spirit of excellence” to ensure that every celebration service ran smoothly. Their commitment is a quiet but essential engine of our church’s operations.
- The impact of the Pastoral Aids is felt by every speaker who stands behind our pulpit. By meeting practical needs and covering our leaders in prayer, this team creates a supportive environment that allows the Word of God to be delivered with confidence. Their unity and attentiveness are a beautiful example of what it means to Care Unconditionally for those who lead us.

BEREAVEMENT CARE

- Pastor La Vetta Coleman and the Bereavement Care team provided an indispensable “Ministry of Presence” in 2025. By serving at every Celebration of Life and repast and hosting mental health workshops in partnership with YoloCares, the team provided a blanket of support for those walking through their darkest seasons.
- The impact of this ministry is the profound comfort felt by our grieving families. By providing resources on wellness and grief support, we are Caring Unconditionally and ensuring that no one in the COP family or the surrounding community has to process loss alone. This is the heart of Redemption, finding hope in the midst of sorrow.

USHER MINISTRY

- In 2025, Monchel Sharp and the Usher Ministry successfully reconnected with the Youth Ministry to train and mentor the next generation of ushers. This partnership is a prime example of our mission to develop and multiply, ensuring that the “art of hospitality” is passed down to our young people.
- The team’s initiative also had an impact on our stewardship processes. By researching and implementing new receptacles for offerings, the ushers helped the security team reclaim time and added an

CONGREGATIONAL CARE TEAM

- Elder Richard and Elder Toyin Spencer have led the Congregational Care Team with a focus on belonging. A significant achievement this year was the consistent outreach to our homebound members and those in crisis. Through intentional prayer and visits, the team ensured that every member felt “seen” regardless of their physical ability to attend a service.
- The impact of this ministry is the strengthening of the “connective tissue” of our church. By reinforcing a culture of compassion, we ensure that no one feels forgotten. Through calls and practical care, we are living out our strategy, HE’S ABLE... We Serve, by being the hands and feet of Jesus to those in difficult seasons.

SENIOR CARE / MOTHERS BOARD

- A beautiful highlight for the Senior Care ministry, led by Elder La Quinta Rials and Mother Joycie Lewis, was the recognition of five members at a local Juneteenth celebration. These members were honored for “nine decades of wisdom” and gifted engraved rockers. This public celebration allowed the community to see the value COP places on our elders.
- The impact of the Mothers Board continues to be their prayerful presence. By serving as a source of wisdom and consistent prayer for the congregation, these women embody our value to Advance Generationally. They remind us that our history is the foundation of our future, and their prayers are the fuel for our mission.

MOTIONS OF PRAISE

- LaSandra Edwards and the Motions of Praise ministry achieved a major goal in 2025 by starting the Youth Dance Ministry. This expansion has invited our younger generation into the “Worship” pillar of our strategy, allowing them to use their bodies to glorify God.
- The impact has been a surge of interest and engagement from the congregation. By ministering more consistently during worship services, Motions of Praise has created a more interactive and vibrant

environment. Their movement helps the congregation transition from observers to participants, proving that HE'S HERE... We Worship.

WOMEN'S MINISTRY

- In 2025, Angela Jackson and the Women's Ministry took the mission to the sea, hosting a conference on a cruise ship to Mexico with approximately 50 women. This "retreat" environment provided a unique opportunity for deep connection, refreshment, and spiritual empowerment away from the distractions of daily life.
- The impact of this creative approach was the "Reach" it provided. The ministry encountered a new online group of ladies who had never attended a Sunday celebration but were drawn in by the conference. This is a testament to our value of Reaching Intentionally, finding new ways to invite women into the COP sisterhood and the Kingdom of God.

HOSPITALITY AND EVENTS

- Leonora Gordon and the Hospitality team reached a high level of ministerial cohesiveness in 2025. By working seamlessly with other departments to execute church-wide events, they ensured that every guest felt the "warmth of the house." Their ability to coordinate complex logistics with a servant's heart is a major win for our church culture.
- The impact of their work is a community that feels loved and welcomed. The volunteers' commitment to serving the future of the Gospel is evident in every meal served and every space prepared. They are the physical manifestation of our desire to Care Unconditionally for our community.

GREETERS MINISTRY TEAM

- The Greeters Ministry, coached by Crystal Sheffield, navigated a significant "standout moment" in 2025 with the successful passing of the baton from the former coach to the new leadership. This transition was handled with grace, ensuring that the excellence of our first impressions never faltered.
- The impact of this team lies in its agility and resilience. Whether filling gaps on short-staffed Sundays or adjusting to new leadership, the greeters have remained a consistent source of love and warmth at both the Cathedral and Legacy Center. They are the "smiling

face of COP," ensuring that everyone who enters feels the empowerment and redemption we preach.

COLLEGE MINISTRY

- In 2025, Jeffrey Fletcher stepped into the role of lead for the College Ministry. While this has been a season of appointment and preparation, the significant achievement is the commitment to this vital demographic. We recognize that our college students are at a crossroads of faith, and we are dedicated to developing them as disciples who will lead in the years to come.
- We look forward to the "impact" stories that will surely emerge in 2026 as this ministry builds its foundation.

HOMEBOUND PRAYER LINE

- In June of 2025, the Homebound Prayer Line, led by Mother Mary Stephens, Mother Elizabeth Slade, and Sister Dyhana Stewart, established a vital Telephone Prayer and Encouragement lifeline for members facing mobility and chronic health challenges. By maintaining a weekly Wednesday prayer cadence with a scripture-based focus, the ministry consistently serves 10-15 participants, ensuring they remain spiritually anchored. This outreach has expanded beyond its original scope, attracting younger generations and community members seeking prayer, resulting in numerous testimonies of answered prayer and renewed hope.
- The impact of this ministry is a deepened sense of Connection and radical care that extends far beyond our physical walls. The team models the value of Caring Unconditionally through tangible acts of love, including hand-delivering 25 fruit trays for Thanksgiving and distributing over 30 Christmas cards with personal gifts. By combining consistent scripture review with intentional home fellowship, such as celebrating the 93rd birthday of Mother Eleanor Smith, the ministry ensures our most isolated members remain seen, valued, and inseparable from the Center of Praise family.

BEREAVEMENT CARE

Coach: Pastor La Vetta Coleman D.Min.

The Bereavement Care Ministry provides compassionate support to COP members and families in the surrounding community during times of loss. The ministry's purpose is to offer empathy, spiritual encouragement, and the comfort of God to individuals and families who are grieving. Through prayer, presence, and practical assistance, the ministry seeks to walk alongside those experiencing one of life's most difficult moments.

Celebrations of Life services are coordinated and held in both the Sanctuary and the Chapel, creating a respectful and comforting environment for families to honor their loved ones. Repasts are often provided in the Social Hall following these services, allowing family members, friends, and the church community to gather, share memories, and offer support during a time of mourning.

In addition to supporting families during Homegoing services, the ministry also provides workshops, resources, and educational opportunities focused on grief support, mental health, and overall wellness. These programs are designed to help individuals better understand the grieving process while encouraging healing through faith, fellowship, and community care.

Throughout the year, the Bereavement Care Ministry walked alongside numerous families, offering guidance, prayer, and logistical support during their time of loss. Ministry members assisted with coordination of services, provided comfort to grieving families, and ensured that each family felt supported both spiritually and emotionally.

Through its compassionate presence and organized support efforts, the Bereavement Care Ministry continues to extend the love of Christ beyond the sanctuary walls. The ministry remains committed to serving with kindness, dignity, and care, helping individuals and families navigate grief with faith, hope, and the strength of a supportive church community.

WORSHIP AND FINE ARTS EXECUTIVE SUMMARY

Submitted by: Elder Chris McEwen Role: Director of
Worship and Fine Arts (WAFA) Ministry:
Center of Praise

The Worship and Fine Arts Ministry at Center of Praise continues to witness remarkable growth, impacting our congregation through powerful and inspiring expressions of faith. As we move forward, our focus is on intergenerational ministry bridging the gap between tradition and the next generation while ensuring that every artistic expression contributes to a deeper worship experience. This report highlights our current structure, recent wins, and strategic areas for future expansion.

CURRENT MINISTRY OVERVIEW

- **Worship Teams:** Our department boasts two dynamic worship teams that are integral to the flow of our celebrations. They usher the congregation into a deeper worship experience through both contemporary music and traditional hymns. We are excited to report a significant recent milestone: the addition of three young adults (under 25) to our teams. Their presence has injected fresh energy into the ministry and signals a healthy move toward multigenerational leadership.
- **Choir:** The ministry is anchored by a dedicated 30-member choir. Their voices fill the sanctuary, creating an atmosphere of adoration. They remain a pivotal part of our identity during celebrations.
- **Band:** A skilled six-piece band supports both the worship teams and choir, providing the musical excellence that undergirds our diverse celebrations. Their skills, paired with the passionate voices of the choir and teams, create a full and immersive deeper worship experience for all.
- **Dance Teams:** Our adult and youth dance teams continue to add a beautiful, dynamic visual layer to our celebrations, deepening the connection between God and His people through movement.
- **Theatre Arts Ministry:** This ministry brings faith-filled stories to life through dramatic performance, engaging the congregation with biblical truths. While impactful, this area requires immediate personnel growth to sustain its mission.

AREAS OF GROWTH AND EXPANSION

- **Strategic Initiative: Young Adult Praise Team:** Building on the success of adding young adults to our main teams, we are launching a new initiative to form a dedicated Young Adult Praise Team. This group will provide a specific platform for the next generation to lead worship, cultivate their gifts, and draw their peers into the life of the church.
- **Building the Choir:** We are actively seeking to “build out” the choir, moving beyond our current numbers to create a massive, robust sound. A larger choir will allow for greater musical complexity and a significantly deeper worship experience corporately. We are calling for all voices to join this expansion.
- **Theatre Arts Recruitment:** We have a critical need for new talent in our Theatre Arts Ministry. We are looking for actors, directors, and support staff who can help us produce high-quality dramatic presentations. This is a prime opportunity for creatives in our congregation to use their gifts for God’s glory.
- **Men’s Worship Team:** We continue to prioritize the recruitment of men for the Men’s Worship Team to ensure a balanced, dynamic sound and strong male leadership presence on the platform.

Conclusion

The Worship and Fine Arts Ministry is in a season of vibrant growth. By intentionally investing in our youth, expanding our choir, and revitalizing our theatre arts, we are positioning ourselves to lead the Center of Praise into a new era of worship. We invite leadership’s support as we recruit and equip the saints for this work.

EXECUTIVE SUMMARY

SOCIAL MEDIA

MEN’S MINISTRY

Director: Pastor Jonathan “Jonno” Strickling, MA, BS

COP SOCIAL MEDIA

The Online Ministries include COP Global (Live Stream Celebrations), COP Social Media (Facebook, Instagram, YouTube, and TikTok), and various other media-related areas. COP streams our Celebrations live every Sunday at 9:30 AM (Pacific), Thursdays during our Prayer & Share Meetings at 6:30 PM (Pacific), and at other special services. These include Healing & Praise, the annual Holy

Convocation, and the Imani Celebration. We also serve our bereaved families by streaming Home Goings and Memorial Services.

Our weekly viewership for Sunday Celebrations remains well over 2200 (including live presentations and five subsequent days of on-demand viewing). We have grown our Facebook followers to 7.6K and Instagram followers to 2000. We have grown our YouTube subscribers to 3,100 and our monthly viewership to 12.5K.

What are our viewers and social media audience seeing? They are experiencing COP at its finest. Each week, our volunteer Camera Operators, Video Switchers, Live Streamers, Computer Graphics, and Photographers help capture and produce professional-quality video and images. Our in-house graphic designers stay in close touch with current marketing trends.

We continue to produce cutting-edge promotional content, including inspiring and motivating devotionals and promotional videos, to convey the activities of the Church and its Ministry Teams. We encourage COP Partners, congregants, and guests to access our weekly Online Bulletin (cop.church/bulletin) for the latest updates and events.

What’s New?

We are preparing to launch a new level of discipleship to our palette. Center of Praise Ministries will be launching **COP eChurch**: an online partnership (membership) that transforms current viewers into discipleship partners. The Mission at COP is “Developing, Multiplying, and Sending disciples of Christ for the work of the Kingdom of God.” Regardless of geography, schedule conflicts, or other barriers, COP eChurch will help connect individuals in a community where they can communicate with other believers through virtual OmniGroups (small groups). There is so much more to come, so stay tuned.

Lastly, we have launched the COP Store, an online resource for COP swag. The COP Store is accessible via the COP Website, linking shoppers to our myspreadshop.com retail

outlet for print-on-demand products that ship directly to the customer. COP receives passive income of nearly \$500.00 with minimal effort and without mass marketing.

Shoppers will find COP logo apparel and COP Ministry Team-related gear (Any Man Ministry, OmniGroups, Singles, Youth, OmniFactory). Our goal is to convert this from a passive stream of income into an intentional one. Go to cop.church/shop

WE ARE LOOKING FOR NEW VOLUNTEERS IN THE FOLLOWING AREAS: Online Hosts (COP eChurch), Social Media Team, Photography, Computer Graphics (Visual Arts), and Media Team (Video cameras, switchers, live stream). Contact pastorjonno@cop.church

ANY MAN MINISTRY

The Men's Ministry at Center of Praise Ministries continues to grow in number and effectiveness. Our objective is to connect men in the Body of Christ, both at COP and in other ministries, by providing opportunities for fellowship and discipleship. Men need to know they are valued and have a purpose. Through events that promote fellowship, foster healthy male relationships, encourage OmniGroup participation, and our annual Brother's Keeper Men's Conference, the men of COP are responding to God in a lifestyle of worshipping, learning, and serving.

In August 2025, Any Man Ministry hosted the Brother's Keeper Men's ADVANCE. We took the annual conference to The Bishop's Ranch Retreat Center in Healdsburg, CA, where 65 men connected with their God-designed purpose under the teaching of our own Bishop Parnell M. Lovelace, Jr., Chaplain Earl Smith, Pastor Damien Giacchino, and Pastor Chase Wiggins. Each man left with a clearer understanding of their identity and purpose, new and strengthened relationships in brotherhood, and an acceptance of the anointing upon their lives.

This year, we are presenting more off-campus events to promote even more fellowship. The Brother's Keeper Men's Advance Conference is on hold for 2026. However, we are partnering with the leaders of the Fearless Men's Conference, which takes place in Elk Grove on March 20-21, 2026.

In addition, we have launched a bi-monthly men's mental health meeting called MANTALK. ManTalk is hosted by two certified mental health practitioners who facilitate open dialogue with more than 40 men.

We are actively recruiting volunteers for key roles, including Fundraising Coordinators, Event Planners, Event Coordinators, and Ministry Liaisons. For more information, contact pastorjonno@cop.church

GLOBAL CARE

Fiscal Year 2024–2025

Elders Samuel and Bunmi Brown-Dawson

The mission of COP Global Care is to build collaborative partnerships with those serving in ministry within their local contexts and to support their work through prayer, encouragement, and practical resources.

During this fiscal year, members of our team traveled with Yaaka Africa on a mission outreach focused on children, women, and pastoral discipleship. Lives were impacted as individuals gave their lives to Christ, others rededicated their faith, and pastors were strengthened and encouraged. We have continued our partnership in Sierra Leone with Bethel Temple Hastings Fellowship in Freetown under the leadership of Pastor Abraham George. The ministry includes approximately 40 branches across Sierra Leone and an additional branch in Liberia. We work closely with Pastor Patience Brown-Dawson, who serves in a remote village where her primary outreach is to children. Reaching the next generation has become a meaningful pathway to engaging families.

Resources in the village are limited. The church rents a modest schoolroom that is increasingly inadequate as attendance grows. Despite the lack of books, Bibles, and recreational materials, the children attend consistently, many arriving hungry.

This past summer, a Vacation Bible School outreach was successfully held. School supplies, participation awards, and snacks were distributed. A Sunday program providing light food for the children was initiated and has already increased attendance. We are currently assessing the cost of sustaining weekly food support, as this remains an immediate need. Transportation costs are incurred when the remote congregation participates in services in Freetown. In addition, our partnership has helped move forward long-standing plans to construct a church building on land previously secured in the village. Architectural plans have now been completed.

Support continues to be expended to support our partners in Haiti during turbulent and difficult times. We remain grateful for the generosity and faithfulness of our church family. Your support continues to make a meaningful difference.



DISCIPLESHIP MINISTRY

Pastor Erinn Harris, D.Min. | Director of Discipleship

This year has been a time of continued growth and strengthening for the Discipleship Ministry at Center of Praise Ministries. Our focus has been on building upon the foundation that has been established while expanding discipleship opportunities and improving the systems that support spiritual growth and connection. Our key achievements reflect our commitment to nurturing faith, helping individuals take meaningful next steps, and creating opportunities for people to grow in community.

KEY HIGHLIGHTS:

- **Water Baptisms:** Over 150 people were baptized, publicly declaring their faith and taking an important step in their spiritual journey.
- **New Members:** Over 150 new members completed New Partner Orientation, reflecting continued growth and strong connection within our church family.
- **OmniGroups Expansion:** 6 new OmniGroups were launched, expanding opportunities for members to connect, grow, and be discipled in small group community.
- **Bible Empowerment:** Sunday morning Bible Empowerment Classes were implemented, and adult classes were taught during Family Bible Empowerment, providing additional pathways for biblical learning and spiritual growth.
- **Family Fun Day:** Family Fun Day provided an opportunity for members and guests to connect in a welcoming and engaging environment, helping strengthen relationships and creating additional pathways for people to become more connected to the church.

As we look ahead, we are now in a strong rhythm that allows us to focus on improving and strengthening what we have built. Our continued focus will be on developing OmniGroup facilitators, strengthening discipleship systems, and ensuring sustainable growth in discipleship at Center of Praise Ministries.





SUPPORTING THE KINGDOM

GROWING THE STAFF

Our unique and talented staff does an outstanding job of supporting our COP Family, our Sunday Celebrations, and the everyday tasks necessary to run a church with excellence. But with growth and high levels of excellence comes the need for additional staff to support that growth..

Center of Praise Ministries welcomes Brother Aaron Cardoza, a mentor teacher at Miracle University and has extensive experience serving youth. He has worked with Brother to Brother Mentoring, a Sacramento-based community organization dedicated to supporting at-risk young men through gang intervention, prevention, education, and community integration—offering a beacon of hope for those in need.

He is the founder of The Young Gent Program which teaches young men how to be gentlemen by focusing on

building character and respect, particularly in the Del Paso Heights area.

In addition, Aaron uses his platform as a radio talk show host on 97.5, Hip Hop After Dark, to address critical issues such as gun violence, creating meaningful dialogue with youth and bridging the gap between faith and culture. Aaron is a poet and author of *The Forgotten One*, a powerful book that serves as more than just a story—it is a roadmap of challenges and triumphs designed to help young people navigate their own life journeys.

At Center of Praise Ministries, Aaron’s approach is rooted in his personal testimony of “Trauma to Triumph.” His mission is to build a lasting legacy by inspiring youth to make a positive impact on the world.

OUR SENIOR LEADERSHIP TEAM

FOUNDING & SENIOR PASTOR



Bishop Parnell M. Lovelace, Jr., Ph.D.

EXECUTIVE PASTOR



Pastor Wayne Kirkling
PastorKirkling@cop.church

DIRECTOR OF DISCIPLESHIP



Pastor Erinn Harris D.Min.
PastorHarris@cop.church

DIRECTOR OF MINISTRY ADVANCEMENT AND DEVELOPMENT



Pastor Phyllis Towles
PastorTowles@cop.church

DIRECTOR OF PASTORAL CARE



Pastor La Vetta Coleman
PastorColeman@cop.church

WORSHIP & FINE ARTS DIRECTOR



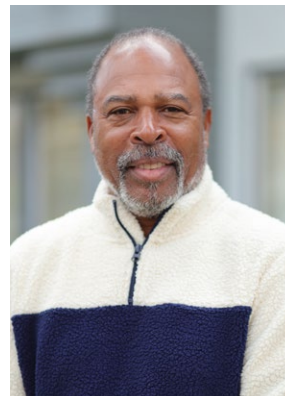
Elder Chris McEwen
ChrisMcEwen@cop.church

DIRECTOR OF COMMUNICATIONS AND MEN'S MINISTRY



Pastor Jonathan Strickling
PastorJonno@cop.church

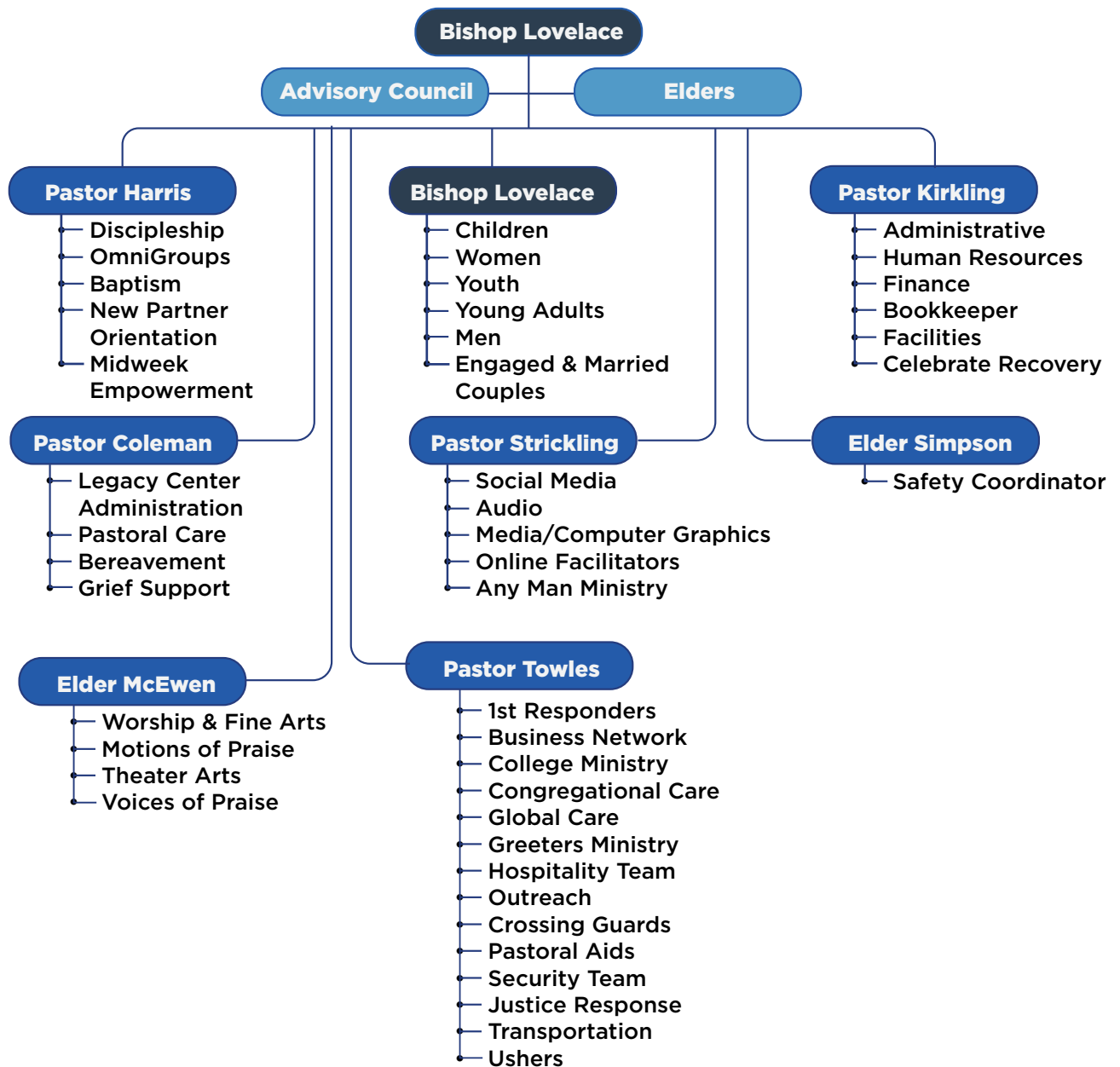
FACILITIES/SAFETY COORDINATOR



Elder Anthony Simpson
Anthony@cop.church

CENTER OF PRAISE MINISTRIES

ORGANIZATION CHART



OUR ADMINISTRATION TEAM

PASTORAL EXECUTIVE ASSISTANT



Elder Toyin Spencer
Toyin@cop.church

ADMINISTRATIVE SPECIALIST



Starla Miller
Starla@cop.church

ACCOUNTS MANAGER



Yvette Swafford
Yvette@cop.church

RECEPTIONIST



Laura Lockett
FrontDesk@cop.church

ADMINISTRATIVE EXECUTIVE ASST



Karen Nalpantian
Administration@cop.church

VIDEOGRAPHER



Enoch Jones
Enoch@cop.church

CHILDREN'S DIRECTOR



Pastor Kimberlee Blakey
childrensministry@cop.church

YOUTH DIRECTOR



Aaron Cardoza
Youth@cop.church

AUDIO TECHNICIAN



Quincy Middleton
Quincy@cop.church

MINISTRY TEAM COORDINATOR



Bridgett Fields
Bridgett@cop.church

**PASTORAL EXECUTIVE
ASSISTANT**



Sam Gutierrez
Sam@cop.church

COP BOOKKEEPER



Ingrid Wade
Ingrid@cop.church

TRANSPORTATION



Shaquille Fisher
Transportation@cop.church

**FACILITIES/MAINTENANCE
TECHNICIAN**



Thomas Lovelace
Thomas@cop.church

**FACILITIES/MAINTENANCE
TECHNICIAN**



Tony Alcantara
Tony@cop.church

ADVISORY COUNCIL



Marcus Piper, Chair



Bea Bailey



Michael Wall



Brenda Grooms



Dyhana Stewart

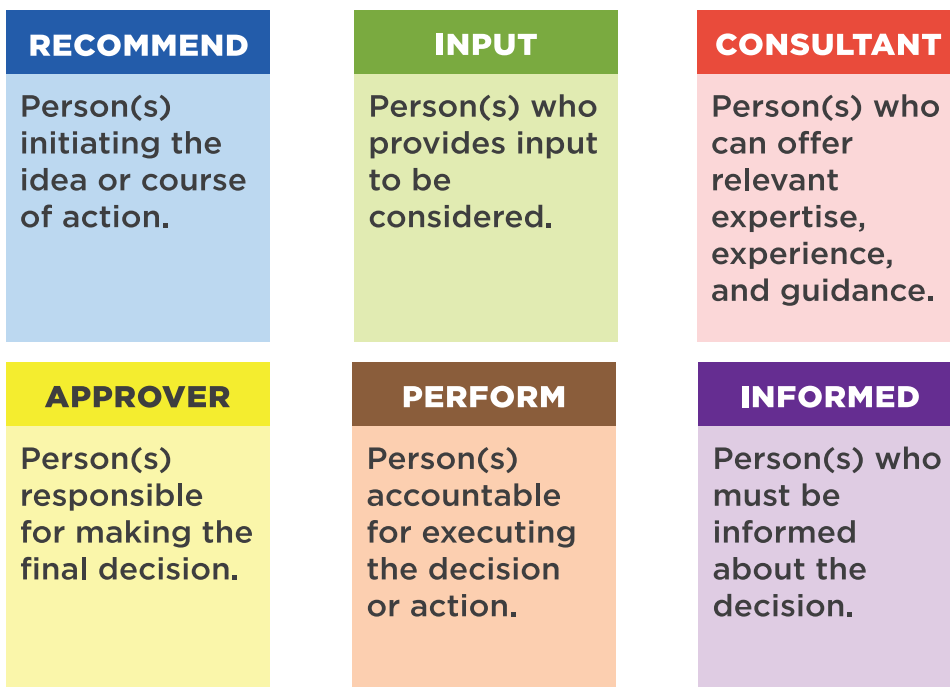


Amy Kern



RICAPI DECISION-MAKING PROCESS

Effective decision-making is a critical facet of organizational dynamics, guiding strategic choices and fostering alignment, accountability, clarity, and communication within the framework of operational structures. The Senior Leadership Team (SLT) has meticulously crafted RICAPI, an innovative decision-making model. Within RICAPI, each letter symbolizes a pivotal role in the decision-making process, emphasizing that these roles are interwoven rather than strictly sequential.



BUDGET REVIEW

CONTRIBUTIONS AND GIFTS

Our Giving Sources Stats

(Percentages rounded to the nearest whole number)

ONLINE/WEBSITE	MOBILE APP	TEXT TO GIVE	CHECKS/CASH
92%	1%	5%	2%

When giving is easy for everyone, giving grows. Our congregation is made up of a diverse group of people, which naturally means people prefer to give in different ways. Whether each individual prefers to donate from their computer, on their phone, or through a text message, it can be easily done through our online giving platform, ShelbyNext.

We encourage our donors to consider registering for a ShelbyNext online account at cop.church/give or download the COP mobile app.

Giving your donations online saves both the donor and the church time, money, and helps with being good stewards

over the finances God has entrusted to us, as well as saving administrative time and resources.

In addition, donors may also mail checks, or drop off checks and cash offerings at the Administration Office, 2150 Capitol Avenue, Sacramento, CA 95816.

If you have questions or need assistance with setting up your online, text to give, or mobile app account, please reach out to Yvette@cop.church or call the administration office at (916) 441-3305 Ext 112.

EXECUTIVE PASTOR'S ANNUAL REPORT

Center of Praise Ministries

THANKSGIVING & ACKNOWLEDGMENT

"Give thanks to the Lord, for He is good; His love endures forever." Psalm 107:1

As Executive Pastor, it is both an honor and a joy to stand before you and reflect on what God has done in and through Center of Praise Ministries this past year. First and foremost, we give God all the glory. What you will hear today is not merely a financial or administrative report; it is a testimony of God's faithfulness and the obedience of His people.

On behalf of our pastoral leadership, advisory council, ministry leaders, and staff, thank you for your continued prayers, service, and faithful stewardship. Your commitment has allowed this ministry to remain strong, stable, and forward-moving.

GRATITUDE FOR FAITHFUL GIVING

"Bring the whole tithe into the storehouse... and see if I will not throw open the floodgates of heaven." Malachi 3:10

We want to sincerely thank every member and partner who has given faithfully, through tithes, offerings, and sacrificial gifts. Your generosity reflects trust in God and belief in the mission of this house.

Because of your faithfulness:

- Ministry operations continued without interruption
- Outreach initiatives expanded
- Facilities were maintained and improved
- Financial obligations were met with integrity and accountability

Your giving is not just meeting budgets it is fueling ministry and changing lives.

THE IMPACT OF YOUR GIVING

"And God is able to bless you abundantly, so that in all things... you will abound in every good work." 2 Corinthians 9:8

Your generosity has had a tangible and spiritual impact:

- Souls were served and strengthened
- Families received care, prayer, and support
- Youth and community outreach continued to flourish
- Our facilities remained a welcoming place for worship, ministry, and partnership

Every dollar given became a seed planted into eternal work. Lives were touched not because of buildings alone, but because hearts were willing.

CAMPAIGN SUCCESS & FINANCIAL STEWARDSHIP

"The plans of the diligent lead surely to abundance." Proverbs 21:5

This year, we also celebrate the success of our financial stewardship efforts and ministry campaigns. Through prayerful planning, disciplined budgeting, and collective participation:

- Key financial goals were achieved
- Debt reduction and sustainability efforts moved forward
- Long-term stability was strengthened
- Transparency and accountability remained a top priority

These accomplishments reflect a church that is not only spiritual, but wise in stewardship honoring God with excellence.

VISION FOR THE FUTURE

"Write the vision and make it plain... For the vision is yet for an appointed time." Habakkuk 2:23

As we look ahead, our vision remains clear:

- To continue advancing the Gospel
- To strengthen discipleship and ministry effectiveness
- To expand outreach and community impact
- To steward our resources in ways that honor God and future generations

We are positioning the Center of Praise Ministries not just for survival but for fruitfulness, sustainability, and legacy.

"Now to Him who is able to do immeasurably more than all we ask or imagine... to Him be glory in the church." Ephesians 3:20

In His Love and Service



Executive Pastor

GENERATIONAL GIVING STATISTICS

Understanding the Heart of Our Congregation

At Center of Praise Ministries, we cherish the diverse and multigenerational community that makes up our congregation. It's essential for us to understand how each generation contributes to the life of our church and its ministries. Below, we provide insights into generational giving:

1. Baby Boomers (Born 1946-1964):

- **Average Giving:** On average, Baby Boomers continue to be strong financial supporters of our church. Their contributions provide a stable foundation for our ministry programs.
- **Legacy Giving:** Many Baby Boomers have included our church in their estate plans, leaving a lasting legacy for future generations.
- **Involvement:** Baby Boomers actively participate in leadership roles, committees, and volunteer activities, contributing not only financially but also with their time and expertise.

2. Generation X (Born 1965-1980):

- **Average Giving:** Generation X members are making significant contributions to our church's financial well-being, bridging the gap between older and younger generations.
- **Tech-Savvy Giving:** They are often more comfortable with digital giving methods, making use of online platforms and mobile apps to support our ministries.
- **Family Involvement:** Gen Xers frequently involve their families in church activities, emphasizing the importance of faith to their children.

3. Millennials (Born 1981-1996):

- **Growing Engagement:** While still early in their careers, Millennials are becoming increasingly engaged in our church community and are making a growing impact on our giving.
- **Digital Giving:** They are especially inclined to use online giving platforms and may appreciate opportunities for text-based or app-based donations.

- **Social Consciousness:** Many Millennials are driven by a strong sense of social justice, and they often support causes that align with our church's mission.

A Unified Vision

Despite differences in giving habits among these generations, what unites us all is our shared vision of faith, community, and service. We celebrate the unique contributions of each generation and believe that, together, we can continue to strengthen our church's mission and ministry.

Our Commitment to Inclusivity

We are committed to fostering an inclusive and intergenerational community where all generations feel valued, heard, and connected. We encourage open dialogue and collaboration among generations to enrich our church experience.

Thank you for your ongoing support and dedication to the Center of Praise Ministries. Your contributions, regardless of generation, are essential to the continued growth and impact of our church.

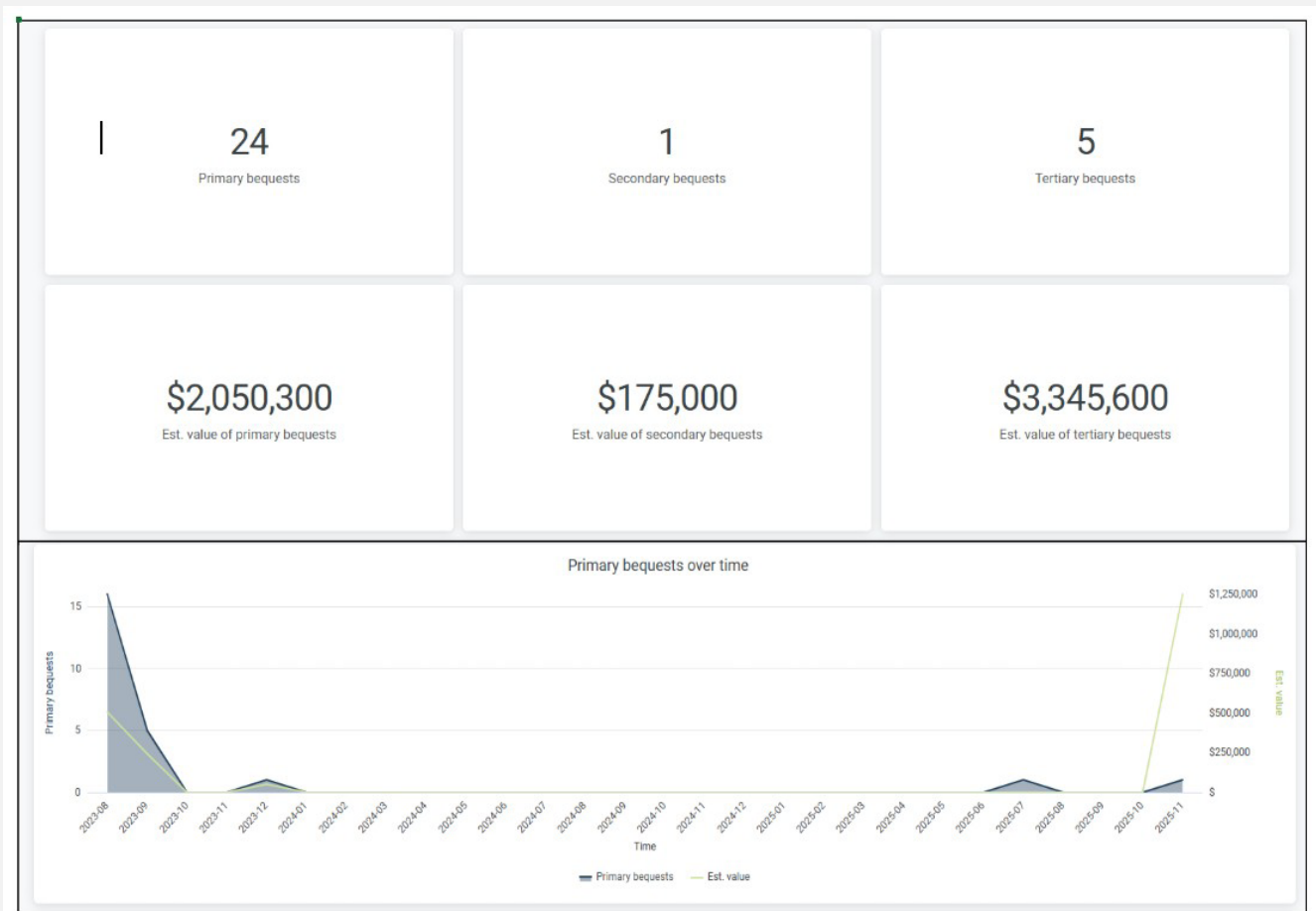
FREE WILL CAMPAIGN

The Center of Praise Ministries is proud to partner with FreeWill, an online tool that provides our community with the resources to create a will and other essential estate planning documents at no cost to COP members. If you have yet to take this essential step in your stewardship journey, FreeWill can assist you and your loved ones as you plan for the future.

Peace of Mind: A will allows you to provide for your loved ones and safeguard all the resources God has given you.

Security: Creating your will and estate plan allows you to communicate important financial and healthcare decisions, helping you prepare for whatever the future may hold.

Impact: By including a legacy gift in your will is a powerful way to sustain the Center of Praise Ministries for generations to come. A legacy gift costs nothing to make today and allows you to make a lasting commitment to your faith and value, and the chance to extend your faith and values beyond your lifetime supporting our ongoing mission to engage in developing, multiplying, and sending out disciples of Jesus Christ for the work of the Kingdom.



DIVERSE GIVING OPPORTUNITIES

Beyond Traditional Cash Contributions

We recognize that generosity can take many forms, and we are grateful for the diversity of ways our congregation can support this important initiative.

1. Stock Donations:

- **Tax Advantages:** Donating appreciated stocks or securities can offer significant tax benefits. You may be able to avoid capital gains tax while making a meaningful contribution to the campaign.
- **How to Give:** Please reach out to our website on giving for guidance on transferring stocks to our Center of Praise account.

2. Life Insurance Policies:

- **Naming Center of Praise Ministries as a Beneficiary:** You can designate our church as a beneficiary of your life insurance policy. This allows you to provide a substantial gift to the campaign while maintaining ownership of the policy.
- **Gift of a Paid-Up Policy:** If you have a fully paid life insurance policy that you no longer need, you can donate it to the church.

3. Estate Planning:

- **Including Center of Praise in Your Will:** Consider including a bequest to our church in your estate planning. This is a thoughtful way to leave a lasting legacy.
- **Charitable Trusts:** Explore options like charitable remainder trusts or charitable lead trusts that can benefit both your heirs and Center of Praise.

4. Qualified Charitable Distributions (QCDs):

- **Aged 70½ and Older:** If you are in this age group, you can make tax-free charitable contributions directly from your Individual Retirement Account (IRA) to Center of Praise. This allows you to fulfill your Required Minimum Distribution (RMD) while supporting the campaign.

5. Cryptocurrency Donations:

- **Digital Giving:** Center of Praise now accepts cryptocurrency donations. This innovative way of giving can be an excellent option for those who hold digital assets.
- **Contact Us:** Reach out to our financial team for information on how to make a cryptocurrency donation securely.

6. Non-Cash Assets:

- **Other Non-Cash Gifts:** If you have other non-cash assets, such as real estate or valuable personal property, you can explore opportunities to donate them to the campaign.
- We are committed to facilitating these giving options to ensure that your generosity aligns with your financial goals and values. Our financial team and advisors are available to provide guidance and answer any questions you may have about these giving methods.

Together, we can secure the future of Center of Praise and continue our mission of faith, service, and community.

CELEBRATION OF THE PAY IT OFF CAMPAIGN

Center of Praise Ministries Contributions

Today we celebrate something powerful that God has done in the life of our church family!

Earlier this year, on January 15, 2026, we officially concluded our Pay It Off Campaign, and what we witnessed through this effort has been nothing short of the faithfulness of God and the generosity of His people.

Because of your obedience, your sacrifice, and your commitment to the vision of this ministry, we have been able to pay off significant portions of debt and strengthen the financial foundation of Center of Praise Ministries. Through this campaign, as of January 15, 2026, our church family gave a total of \$525,611.79 toward the Pay it Off Campaign!

Church family, that is something to celebrate!! Every gift given represented more than dollars; it represented faith in the future of this ministry. It represented people saying, “We believe in what God is doing here, and we are willing to invest in it.” And because of that faithfulness, we have taken real steps toward reducing financial burdens and positioning this ministry for greater freedom to serve, discipline, and reach our community.

That is a victory for the Kingdom of God. We also want to express a very special thank you to our Pay It Off Campaign Team. Their leadership, planning, encouragement, and dedication helped guide this effort with excellence. Much of their work happened behind the scenes, but the impact of their leadership is clearly seen today.

To the campaign team, thank you for your outstanding work and faithful service.

And to every member, family, and friend of Center of Praise Ministries who gave whether large or small thank you for

your faithfulness. Your generosity has helped move this ministry forward and has helped position us for an even stronger future.

The Word of God reminds us in 2 Corinthians 9:11 “You will be enriched in every way so that you can be generous on every occasion, and through us your generosity will result in thanksgiving to God.”

Today we stand as a church family giving thanks to God for what has been accomplished.

Because of your generosity... because of your faith... because of your commitment... We are stronger, we are moving forward, and the work of the Kingdom continues. Church family, can we give God praise for what He has done through the Pay It Off Campaign!

And to everyone who participated, thank you for helping us move this vision forward.

Pastor Wayne Kirkling
Executive Pastor

RESERVE STUDY AND SUSTAINABILITY REPORT 2025 CENTER OF PRAISE MINISTRIES

PURPOSE OF THE RESERVE STUDY

“Suppose one of you wants to build a tower. Won’t you first sit down and estimate the cost...?” Luke 14:28

In keeping with our commitment to biblical stewardship and sound financial governance, Center of Praise Ministries has conducted a Reserve Study and long-term facilities assessment. The purpose of this study is to responsibly plan for the ongoing care, repair, and future sustainability of our buildings and campus, ensuring that ministry remains strong for generations to come.

This study is not driven by fear, but by wisdom, diligence, and foresight, honoring God by planning well.

SCOPE OF THE ASSESSMENT

“The plans of the diligent lead surely to abundance.” Proverbs 21:5

Our assessment included a review of:

- All major church-owned buildings and ministry facilities
- Structural, mechanical, electrical, roofing, and safety-related systems
- Expected life cycles of major capital components
- Deferred maintenance needs and future replacement timelines
- Long-term capital improvement requirements

This review allows leadership to anticipate needs before they become emergencies, reducing financial strain and protecting ministry continuity.

FINANCIAL PLANNING & RESERVE STRATEGY

“Moreover, it is required in stewards that one be found faithful.” 1 Corinthians 4:2

Based on this assessment, we have established a Reserve Strategy that includes:

- Identifying anticipated capital expenses over the next 5-20 years
- Establishing target reserve funding levels
- Incorporating reserves into our annual budgeting process
- Aligning maintenance planning with ministry priorities

These figures are designed to support long-term sustainability while maintaining ministry flexibility.

GRANTS, EXTERNAL FUNDING & STRATEGIC SUPPORT

“God supplies seed to the sower and bread for food... and will increase your store of seed.” 2 Corinthians 9:10

In addition to faithful congregational giving, Center of Praise Ministries has pursued and received external funding and grants to assist with facility improvements and capital needs.

Grants & External Funding Received:

- Grant Source: CAL OES | Amount: \$ 300,000
- Grant Source: SMUD | Amount: \$ 50,600
- Total Grant Funding Applied Toward Facilities: \$ 350,600

These funds have been strategically applied to reduce the burden on the general fund while accelerating needed improvements.

SUSTAINABILITY & FUTURE BUILDING STRATEGY

“Unless the Lord builds the house, the builders labor in vain.” Psalm 127:1

Looking forward, our building strategy focuses on:

- Proactive maintenance rather than reactive repairs
- Prioritizing safety, accessibility, and ministry effectiveness
- Extending the useful life of existing assets
- Making data-informed decisions about renovation, replacement, or repurposing
- Ensuring facilities support not hinder our mission

Our goal is not merely to maintain buildings, but to steward ministry spaces that serve people well and glorify God.

LEADERSHIP COMMITMENT & ACCOUNTABILITY

“For which of you, intending to build, does not sit down first and count the cost?” Luke 14:28

Church leadership remains committed to:

- Ongoing review of reserve adequacy
- Transparency with the congregation
- Responsible use of designated and restricted funds
- Periodic reassessment of facility needs as ministry grows

This reserve study will be reviewed and updated regularly to reflect changing conditions, ministry expansion, and financial realities.

CLOSING STATEMENT

Through prayerful planning, disciplined stewardship, and God’s provision, Center of Praise Ministries is positioning itself for long-term strength, stability, and impact. We are building not just for today, but for those who will worship, serve, and encounter Christ here in the years to come.

Pastor Wayne Kirking

Executive Pastor

Budgeted Financial Statement for Period Ending September 30, 2025
 Budgeted Financial Statement
 Center of Praise Ministries
 Fiscal Year Beginning 10/1/2024

<u>Account #</u> <u>Description</u>	<u>Actual for</u> <u>Period</u>	<u>Actual YTD</u>	<u>Budget YTD</u>	<u>Budget Annual</u>	<u>Var. Actual</u> <u>to Annual</u> <u>Budget %</u>
Income					
3 Tithes & Offering	\$204,706	\$2,889,802	\$3,024,000	\$3,024,000	95.5622%
4 Pay It Off Campaign	\$8,332	\$130,490	\$264,000	\$264,000	49.4282%
5 Ministry Income	\$1,452	\$70,491	\$7,800	\$7,800	903.7251%
6 Rental Income	\$8,126	\$232,855	\$240,000	\$240,000	97.0231%
7 Facility Usage Income	\$1,500	\$12,899	\$12,000	\$12,000	107.4947%
8 Special Events Income	\$4,732	\$34,435	\$21,000	\$21,000	163.9750%
9 Other Income	\$19,028	\$58,602	\$39,300	\$39,300	149.1155%
Total Income	\$247,876	\$3,429,575	\$3,608,100	\$3,608,100	95.0521%
Expenses					
Ministry Expenses					
13 Background Checks	\$229	\$5,688	\$3,000	\$3,000	189.6033%
14 Church Promotion/Commu	\$771	\$29,182	\$24,000	\$24,000	121.5922%
15 Conferences & Training	\$0	\$833	\$4,200	\$4,200	19.8390%
16 Continuing Education	\$0	\$145	\$2,400	\$2,400	6.0563%
17 Computer/Software Maint/	\$14,745	\$106,522	\$105,300	\$105,300	101.1603%
18 Curriculum	\$97	\$664	\$2,972	\$2,972	22.3536%
19 Decorations/Flowers	\$0	\$284	\$600	\$600	47.2733%
20 Equip/Facilities Rental	\$0	\$700	\$900	\$900	77.7778%
21 Food	\$2,396	\$27,684	\$19,410	\$19,410	142.6285%
22 Honorariums	\$1,300	\$47,838	\$26,200	\$26,200	182.5886%
23 Love Offering/Benevolence	\$2,781	\$50,113	\$42,000	\$42,000	119.3166%
24 Media Expenses	\$8,552	\$50,306	\$30,000	\$30,000	167.6873%
25 Missions Trips Expense	\$2,500	\$40,506	\$51,000	\$51,000	79.4233%
26 Ministry Furniture & Equip	\$0	\$1,428	\$300	\$300	475.8667%
27 Misc. Expense	\$485	\$4,289	\$1,200	\$1,200	357.4300%
28 NPO Expense	\$0	\$41	\$1,000	\$1,000	4.1310%
29 Postage	\$88	\$223	\$1,500	\$1,500	14.8813%
30 Printing	\$75	\$3,416	\$17,014	\$17,014	20.0768%
31 Signs/Signage	\$0	\$710	\$1,200	\$1,200	59.1367%
32 Special Events/Meeting Ex	\$1,000	\$65,203	\$37,460	\$37,460	174.0600%
33 Special Projects	\$0	\$0	\$20,400	\$20,400	0.0000%
34 Subscriptions/Books	\$147	\$219	\$864	\$864	25.3634%
35 Supplies	(\$24,767)	\$42,637	\$27,100	\$27,100	157.3303%
36 Telephone/Internet	\$4,255	\$72,804	\$54,000	\$54,000	134.8220%
37 Travel/Hotel Accommodat	\$928	\$2,541	\$600	\$600	423.4217%
38 Vehicle Expenses	\$125	\$1,849	\$3,000	\$3,000	61.6493%
Total Ministry Expenses	\$15,707	\$555,825	\$477,620	\$477,620	116.3740%
Operating Expenses					
40 Books & Materials	\$0	\$450	\$600	\$600	75.0000%
41 Building Expenses	\$12,964	\$43,136	\$18,000	\$18,000	239.6470%
42 Building Repair & Maint	(\$67,343)	\$31,697	\$48,300	\$48,300	65.6257%
44 Custodial Supplies	\$5,460	\$18,132	\$12,000	\$12,000	151.1038%
45 Equipment Lease	\$1,084	\$12,069	\$12,600	\$12,600	95.7867%
47 Furniture & Equipment	\$117	\$215	\$600	\$600	35.8083%
48 Janitorial Service	\$0	\$0	\$300	\$300	0.0000%
49 Landscape & Gardening	\$4,001	\$38,177	\$30,000	\$30,000	127.2567%
50 Legal/Professional Service:	\$9,086	\$78,867	\$69,600	\$69,600	113.3140%
51 License Fees	\$0	\$1,502	\$1,800	\$1,800	83.4444%

Report created on 12/15/2025 4:17 PM

Page 1 of 1

<u>Account #</u> <u>Description</u>	<u>Actual for</u> <u>Period</u>	<u>Actual YTD</u>	<u>Budget YTD</u>	<u>Budget Annual</u>	<u>Var. Actual</u> <u>to Annual</u> <u>Budget %</u>
52 Liability/Umbrella Insuranc	\$5,292	\$55,483	\$59,640	\$59,640	93.0298%
53 Meeting Expense	\$91	\$1,724	\$1,200	\$1,200	143.7000%
54 Membership Fees	\$0	\$325	\$1,700	\$1,700	19.1176%
55 Misc. Admin Expense	\$0	\$3,285	\$960	\$960	342.2229%
56 Pest Control	\$0	\$2,951	\$3,600	\$3,600	81.9722%
57 Property Tax	\$0	\$33,912	\$21,000	\$21,000	161.4877%
58 Service Charges/Fees	\$784	\$42,371	\$72,000	\$72,000	58.8482%
59 Subcontractors/Outside Se	\$6,399	\$90,311	\$134,000	\$134,000	67.3959%
60 Travel Expense	\$0	\$279	\$6,000	\$6,000	4.6553%
61 Utilities	\$27,623	\$171,341	\$150,000	\$150,000	114.2272%
62 Amortization Expense	\$80	\$1,023	\$0	\$0	0.0000%
63 Depreciation Expense	\$1,896	\$400,261	\$420,000	\$420,000	95.3002%
Total Operating Expenses	\$7,533	\$1,027,512	\$1,063,900	\$1,063,900	96.5798%
Personnel Expenses					
67 Wages & Salaries	\$88,884	\$1,077,190	\$1,156,260	\$1,156,260	93.1616%
68 Housing Allowance	\$34,519	\$398,045	\$349,500	\$349,500	113.8898%
69 Payroll Tax Expense	\$6,156	\$73,684	\$88,452	\$88,452	83.3045%
70 Medical Insurance	\$21,645	\$114,444	\$97,440	\$97,440	117.4505%
71 HSA Contributions	\$250	\$3,269	\$3,000	\$3,000	108.9563%
72 Workers Comp Insurance	\$2,323	\$11,609	\$10,620	\$10,620	109.3164%
73 Life Insurance	\$3,280	\$16,736	\$18,432	\$18,432	90.7963%
74 Payroll & Benefit Admin Fe	\$0	\$4,939	\$8,040	\$8,040	61.4255%
75 Employee Appreciation	\$460	\$9,965	\$8,325	\$8,325	119.6977%
76 Employee Training & Devel	\$0	\$2,544	\$1,800	\$1,800	141.3333%
77 Recruiting/New Hire Fees	\$0	\$0	\$1,800	\$1,800	0.0000%
78 HR Legal/Professional Fees	\$0	\$0	\$1,000	\$1,000	0.0000%
80 Accrued Vacation Expense	\$1,211	\$1,211	\$0	\$0	0.0000%
Total Personnel Expenses	\$158,728	\$1,713,636	\$1,744,669	\$1,744,669	98.2213%
Interest Expense					
82 Interest Expense	\$12,981	\$202,792	\$228,000	\$228,000	88.9440%
Total Interest Expense	\$12,981	\$202,792	\$228,000	\$228,000	88.9440%
Total Expenses	\$194,949	\$3,499,766	\$3,514,189	\$3,514,189	99.5896%
Net Income/(Expense)	\$52,928	(\$70,191)	\$93,911	\$93,911	-74.7419%

\$1,023 Amortization
\$400,261 Depreciation
\$202,792 Interest Expense
\$533,885
\$542,412 Loan Payments

98% Debt Coverage


Pastor Wayne Kirklind

Budgeted Financial Statement for Period Ending
September 30, 2025
Budgeted Financial Statement
Center of Praise Ministries
Fiscal Year Beginning 10/1/2024

<u>Account</u>	<u>YTD</u>
	Current
ASSETS	
CURRENT ASSETS	
First Citizens Checking	\$4,203
First Citizens 590	\$133,725
First Citizens 567	\$110,681
First Citizens 119	\$14,863
First Citizens 528	\$8,005
G1CU 602	\$206,801
G1CU 777	\$1,001
TOTAL CURRENT ASSETS	\$479,279
FIXED ASSETS	
Building and Land	\$4,657,813
Building Improvement	\$1,414,069
Youth Building	\$2,460,550
Land Improvement	\$98,138
Accumulated Depreciation	(\$3,068,392)
Furniture & Equipment	\$1,192,618
Vehicles	\$74,363
TOTAL FIXED ASSETS	\$6,829,160
OTHER ASSETS	
TOTAL OTHER ASSETS	\$0
TOTAL ASSETS	\$7,308,438
LIABILITIES AND EQUITY	

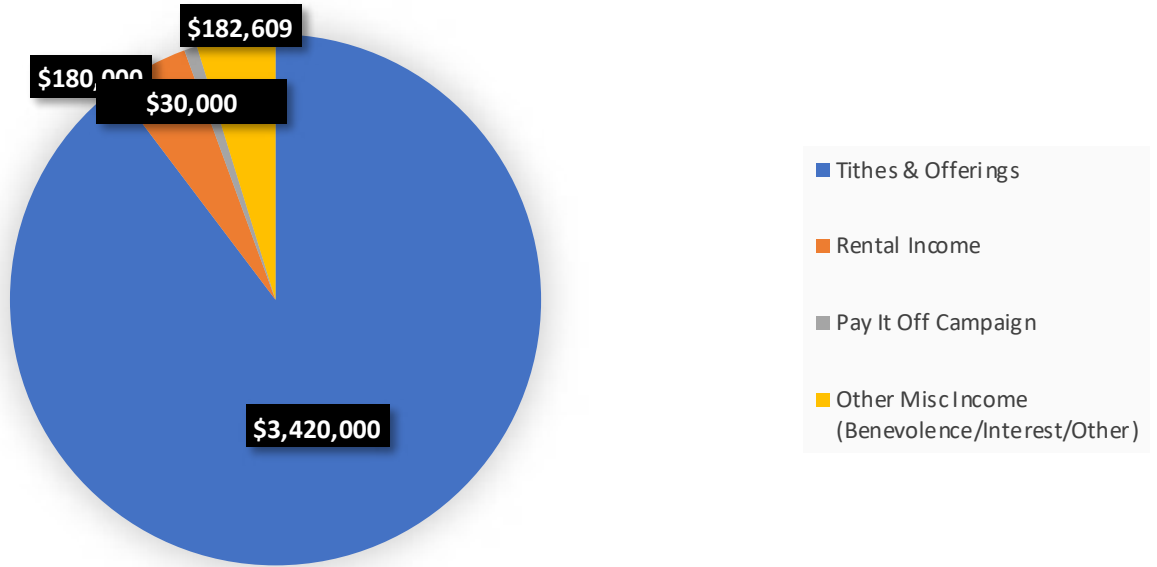


 Pastor Wayne Kirkling

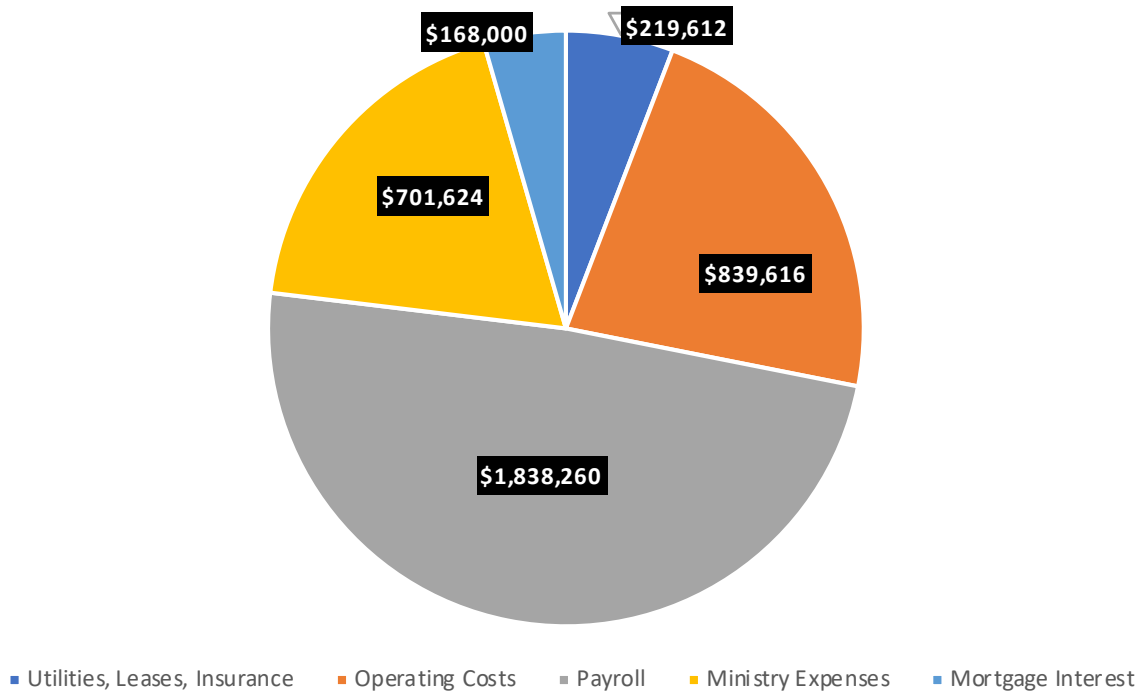


<u>Account</u>	<u>YTD</u> <u>Current</u>
LIABILITIES	
CURRENT LIABILITIES	
Accounts Payable	\$14,412
Accrued Vacation	\$101,649
Accrued Interest	\$16,149
Accounts Payable Serve Sacramento	\$9,972
TOTAL CURRENT LIABILITIES	<u>\$142,182</u>
LONG-TERM LIABILITIES	
Credit Card Payables	\$8,358
Loan Fee Liability	(\$1,819)
Deposits Held	\$5,800
Legacy - Building Fund Payable	\$3,360,768
Youth Building Loan Payable	\$1,445,718
TOTAL LONG-TERM LIABILITIES	<u>\$4,818,825</u>
TOTAL LIABILITIES	<u>\$4,961,007</u>
EQUITY BALANCES	
General Fund - Closing Account	\$1,919,277
General Fund - Closing Account-Current	\$428,037
Year	
General Fund - Closing Account-Current	<u>\$2,347,313</u>
Year-Total	
Building Fund - Closing Account	\$118
TOTAL EQUITY BALANCES	<u>\$2,347,431</u>
TOTAL LIABILITIES AND EQUITY	<u>\$7,308,438</u>

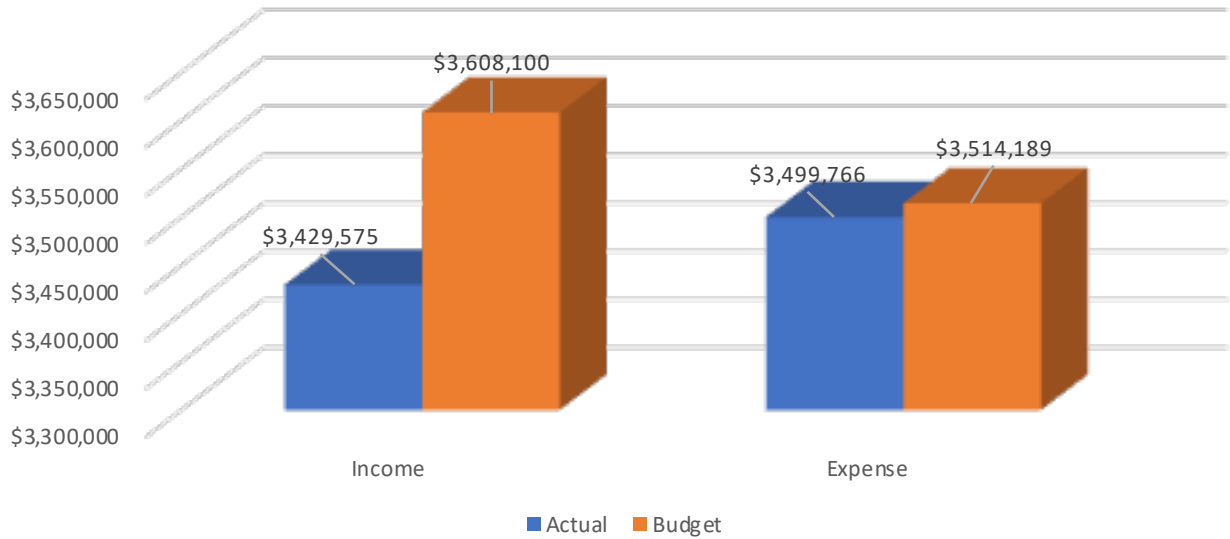
Fiscal Year 2025/2026 Budgeted Income: \$3,812,609



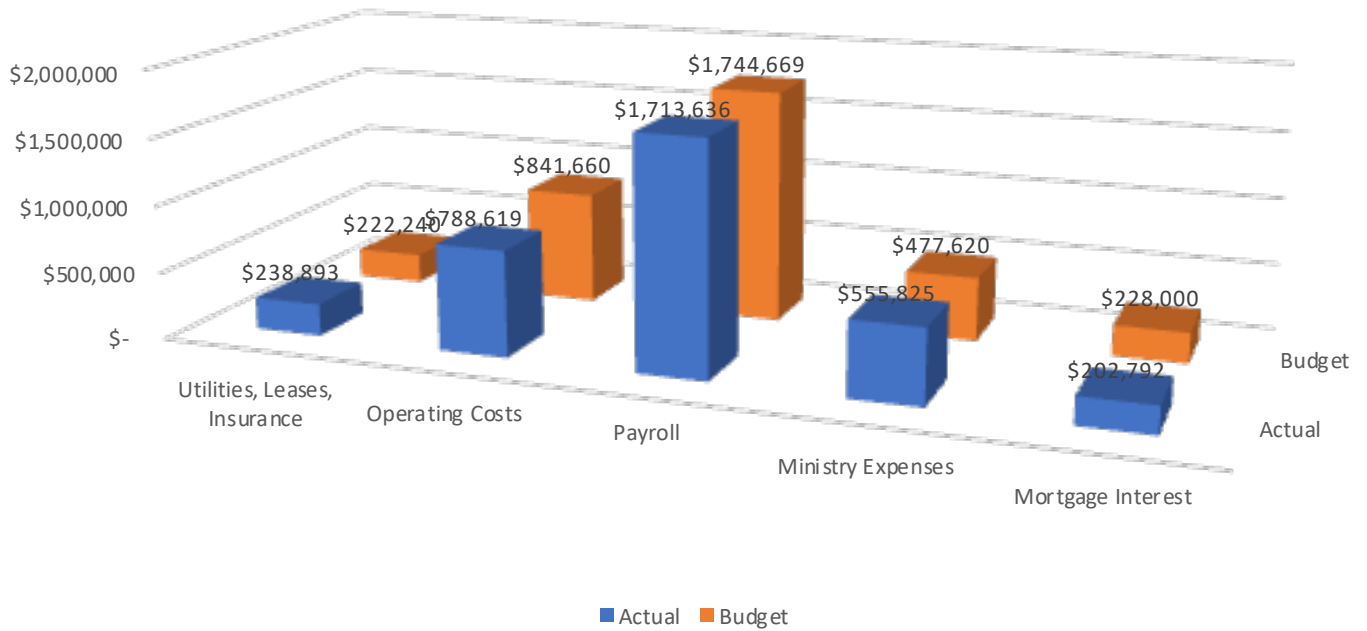
Fiscal Year 2025/2026 Proposed Budgeted Expense: \$3,767,112



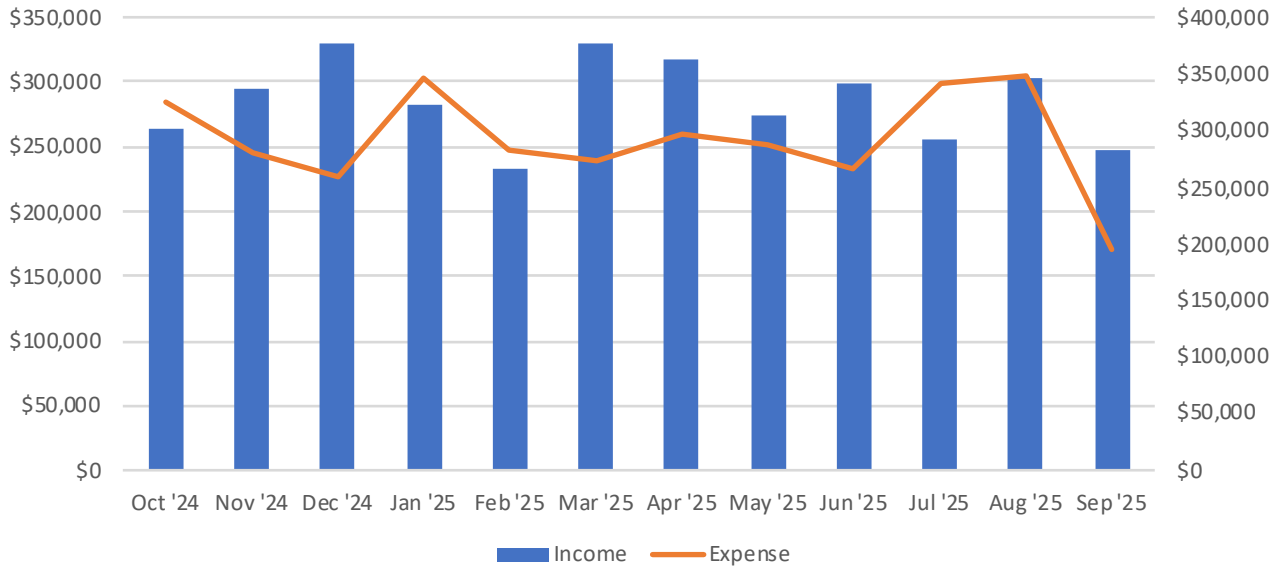
Fiscal Year 2024/2025 Actual vs. Budget as of 9/30/25



Fiscal Year 2024/2025 Expense Breakdown as of 9/30/25



Fiscal Year 2024/2025 Income vs. Expense Trend



CENTER OF PRAISE MINISTRIES

Financial Statements
With Independent Auditor's Report

September 30, 2025 and 2024



CENTER OF PRAISE MINISTRIES

Table of Contents

	<u>Page</u>
Independent Auditor's Report	1
Financial Statements	
Statements of Financial Position	3
Statements of Activities	4
Statements of Cash Flows	5
Notes to Financial Statements	6



INDEPENDENT AUDITOR'S REPORT

Advisory Council
Center of Praise Ministries
Sacramento, California

Opinion

We have audited the accompanying financial statements of Center of Praise Ministries, which comprise the statements of financial position as of September 30, 2025 and 2024, and the related statements of activities and cash flows for the years then ended, and the related notes to the financial statements.

In our opinion, the financial statements referred to above present fairly, in all material respects, the financial position of Center of Praise Ministries as of September 30, 2025 and 2024, and the changes in its net assets and its cash flows for the years then ended in accordance with accounting principles generally accepted in the United States of America.

Basis for Opinion

We conducted our audits in accordance with auditing standards generally accepted in the United States of America. Our responsibilities under those standards are further described in the *Auditor's Responsibilities for the Audit of the Financial Statements* section of our report. We are required to be independent of Center of Praise Ministries and to meet our other ethical responsibilities in accordance with the relevant ethical requirements relating to our audits. We believe that the audit evidence we have obtained is sufficient and appropriate to provide a basis for our audit opinion.

Responsibilities of Management for the Financial Statements

Management is responsible for the preparation and fair presentation of these financial statements in accordance with accounting principles generally accepted in the United States of America, and for the design, implementation, and maintenance of internal control relevant to the preparation and fair presentation of financial statements that are free from material misstatement, whether due to fraud or error.

In preparing the financial statements, management is required to evaluate whether there are conditions or events, considered in the aggregate, that raise substantial doubt about Center of Praise Ministries' ability to continue as a going concern within one year after the date that the financial statements are available to be issued.

Auditor's Responsibilities for the Audit of the Financial Statements

Our objectives are to obtain reasonable assurance about whether the financial statements as a whole are free from material misstatement, whether due to fraud or error, and to issue an auditor's report that includes our opinion. Reasonable assurance is a high level of assurance but is not absolute assurance and therefore is not a guarantee that an audit conducted in accordance with generally accepted auditing standards will always detect a material misstatement when it exists. The risk of not detecting a material misstatement resulting from fraud is higher than for one resulting from error, as fraud may involve collusion, forgery, intentional omissions, misrepresentations, or the override of internal control. Misstatements are considered material if there is a substantial likelihood that, individually or in the aggregate, they would influence the judgment made by a reasonable user based on the financial statements.

In performing an audit in accordance with generally accepted auditing standards, we:

- Exercise professional judgment and maintain professional skepticism throughout the audit.
- Identify and assess the risks of material misstatement of the financial statements, whether due to fraud or error, and design and perform audit procedures responsive to those risks. Such procedures include examining, on a test basis, evidence regarding the amounts and disclosures in the financial statements.
- Obtain an understanding of internal control relevant to the audit in order to design audit procedures that are appropriate in the circumstances, but not for the purpose of expressing an opinion on the effectiveness of Center of Praise Ministries' internal control. Accordingly, no such opinion is expressed.
- Evaluate the appropriateness of accounting policies used and the reasonableness of significant accounting estimates made by management, as well as evaluate the overall presentation of the financial statements.
- Conclude whether, in our judgment, there are conditions or events, considered in the aggregate, that raise substantial doubt about Center of Praise Ministries' ability to continue as a going concern for a reasonable period of time.

We are required to communicate with those charged with governance regarding, among other matters, the planned scope and timing of the audit, significant audit findings, and certain internal control related matters that we identified during the audit.

Ontario, California
February 27, 2026

CENTER OF PRAISE MINISTRIES

Statements of Financial Position

	September 30,	
	2025	2024
ASSETS:		
Current assets:		
Cash and cash equivalents	\$ 479,279	\$ 166,309
Property and equipment–net	6,829,159	7,632,819
Total Assets	\$ 7,308,438	\$ 7,799,128
LIABILITIES AND NET ASSETS:		
Liabilities:		
Current liabilities:		
Accounts payable	\$ 24,746	\$ 55,633
Accrued expenses	109,342	108,983
Notes payable, current portion	278,639	376,150
	412,727	540,766
Notes payable, net of current portion	4,525,606	5,331,069
Total liabilities	4,938,333	5,871,835
Net assets without donor restrictions	2,370,105	1,927,293
Total Liabilities and Net Assets	\$ 7,308,438	\$ 7,799,128

CENTER OF PRAISE MINISTRIES

Statements of Activities

	Year Ended September 30,					
	2025			2024		
	Without Donor Restrictions	With Donor Restrictions	Total	Without Donor Restrictions	With Donor Restrictions	Total
SUPPORT AND REVENUE:						
Contributions	\$ 2,890,802	\$ 130,490	\$ 3,021,292	\$ 2,760,941	\$ 179,302	\$ 2,940,243
Rental income	232,855	-	232,855	236,002	-	236,002
Ministry income	75,196	-	75,196	110,323	-	110,323
Grant income	-	-	-	102,037	-	102,037
Gain on sale of building	498,227	-	498,227	-	-	-
Other income	100,231	-	100,231	64,735	-	64,735
Net assets released from restrictions:						
Satisfaction of specified purposes	130,490	(130,490)	-	179,302	(179,302)	-
Total Support, Revenue, and Reclassifications	3,927,801	-	3,927,801	3,453,340	-	3,453,340
EXPENSES:						
Operating expenses:						
Salaries and benefits	1,689,811	-	1,689,811	1,618,581	-	1,618,581
Facilities and maintenance	473,262	-	473,262	356,053	-	356,053
Depreciation	400,260	-	400,260	399,693	-	399,693
Equipment and software	241,765	-	241,765	168,823	-	168,823
Interest	203,738	-	203,738	233,413	-	233,413
Honorariums	97,886	-	97,886	83,680	-	83,680
Professional fees	94,974	-	94,974	82,205	-	82,205
Office and supplies	76,797	-	76,797	78,123	-	78,123
Merchant and bank fees	47,310	-	47,310	66,510	-	66,510
Grants	40,101	-	40,101	52,002	-	52,002
Conferences	32,956	-	32,956	46,788	-	46,788
Travel	32,878	-	32,878	7,495	-	7,495
Food	27,480	-	27,480	34,465	-	34,465
Other	25,771	-	25,771	17,596	-	17,596
Total Expenses	3,484,989	-	3,484,989	3,245,427	-	3,245,427
Change in Net Assets	442,812	-	442,812	207,913	-	207,913
Net Assets, Beginning of Year	1,927,293	-	1,927,293	1,719,380	-	1,719,380
Net Assets, End of Year	\$ 2,370,105	\$ -	\$ 2,370,105	\$ 1,927,293	\$ -	\$ 1,927,293

See notes to financial statements

CENTER OF PRAISE MINISTRIES

Statements of Cash Flows

	Year ended September 30,	
	2025	2024
CASH FLOWS FROM OPERATING ACTIVITIES:		
Change in net assets	\$ 442,812	\$ 207,913
Adjustments to reconcile change in net assets to net cash provided (used) by operating activities:		
Depreciation and amortization	400,534	400,464
Gain on sale of building	(498,227)	-
Net change in:		
Accounts payable	(30,887)	(93,742)
Accrued expenses	359	(9,663)
Net Cash Provided by Operating Activities	314,591	504,972
CASH FLOWS FROM INVESTING ACTIVITIES:		
Purchases of property and equipment	(98,374)	(135,976)
Proceeds from sale of building	1,000,000	-
Net Cash Provided (Used) by Investing Activities	901,626	(135,976)
CASH FLOWS FROM FINANCING ACTIVITIES:		
Payments on notes payable	(903,247)	(360,713)
Net Cash Used by Financing Activities	(903,247)	(360,713)
Change in Cash and Cash Equivalents	312,970	8,283
Cash and Cash Equivalents, Beginning of Year	166,309	158,026
Cash and Cash Equivalents, End of Year	\$ 479,279	\$ 166,309
SUPPLEMENTAL DISCLOSURES:		
Cash paid for interest	\$ 198,351	\$ 238,607

CENTER OF PRAISE MINISTRIES

Notes to Financial Statements

September 30, 2025 and 2024

1. NATURE OF ORGANIZATION:

The Center of Praise Ministries (the Church) is a nonprofit religious corporation incorporated under the laws of the State of California dedicated to spreading the Gospel of Jesus Christ through establishing, developing and promoting all aspects of church ministry. The Church is exempt from income taxes under Section 501(c)(3) of the Internal Revenue Code (IRC) and Section 23701(d) of the Revenue and Taxation Code of California. However, the Church is subject to federal income tax on any unrelated business taxable income. In addition, the Church is not classified as a private foundation within the meaning of Section 509(a) of the IRC.

The Church is located in the Sacramento area of California and is supported primarily through contributions of the congregation.

2. SUMMARY OF SIGNIFICANT ACCOUNTING POLICIES:

The financial statements of the Church have been prepared on the accrual basis of accounting in accordance with accounting principles generally accepted in the United States of America. A summary of the significant accounting policies is described below to enhance the usefulness of the financial statements to the reader.

USE OF ESTIMATES

The preparation of financial statements in conformity with accounting principles generally accepted in the United States of America requires management to make estimates and assumptions that affect certain reported amounts and disclosures. Accordingly, actual results could differ from those estimates.

CASH AND CASH EQUIVALENTS

Cash and cash equivalents include cash on hand and all cash investments with an initial maturity of three months or less to be cash equivalents. As of September 30, 2025 and 2024, the Church's cash balance exceeded federally insured limits by approximately \$35,000 and \$0, respectively.

PROPERTY AND EQUIPMENT-NET

Fixed assets are recorded at historical cost, estimated value where historical cost is not determinable, and fair market value at date donated. Acquisition costs of the assets are recorded as an expense in the fund from which the asset was purchased. Acquisitions of property and equipment in excess of \$5,000 are capitalized, while maintenance and repairs that do not improve or extend the useful lives of the respective assets are expensed currently. Depreciation, except for land and construction in progress, is computed on a straight-line basis over the following estimated useful lives of the assets:

Buildings and improvements	15 - 40 years
Land improvements	15 years
Furniture and equipment	5 - 15 years
Vehicles	5 years

CENTER OF PRAISE MINISTRIES

Notes to Financial Statements

September 30, 2025 and 2024

2. SUMMARY OF SIGNIFICANT ACCOUNTING POLICIES, continued:

NET ASSETS

The financial statements report amounts by class of net assets:

Net assets without donor restrictions are those currently available at the discretion of management and the board for use in the Church's operations.

Net assets with donor restrictions are those which are stipulated by donors for specific operating purposes, capital projects, or time restrictions.

PUBLIC SUPPORT, REVENUE, AND EXPENSES

Contributions are recorded when cash or unconditional promises-to-give have been received, or ownership of donated assets is transferred to the Church. All contributions are considered available for unrestricted use unless specifically restricted by the donor or subject to legal restrictions.

Property and equipment donated to the Church is reflected as a contribution in the accompanying financial statements based upon estimated fair market values at the date of receipt. The Church receives donated services from a variety of unpaid volunteers. However, no amounts have been recognized in the accompanying statements for these services as the services do not meet the recognition criteria.

Ministry, grant, and other income are recorded when earned, and performance obligations that are satisfied at a point in time, such as rental income, are recognized proportionally over the length of the agreement.

Expenses are recorded when incurred in accordance with the accrual basis of accounting.

CENTER OF PRAISE MINISTRIES

Notes to Financial Statements

September 30, 2025 and 2024

3. LIQUIDITY AND AVAILABILITY OF FINANCIAL ASSETS:

As of September 30, 2025 and 2024, the Church had approximately \$479,000 and \$166,000, respectively, in financial assets available to meet cash needs for general expenditures, consisting of cash and cash equivalents. None of the financial assets are unavailable for general expenditures within one year of the current fiscal year.

4. PROPERTY AND EQUIPMENT—NET:

Property and equipment—net consists of:

	September 30,	
	2025	2024
Land	\$ 4,657,813	\$ 5,454,813
Buildings and improvements	3,972,757	3,901,792
Furniture and equipment	1,192,618	1,192,618
Vehicles	74,363	46,954
	<u>9,897,551</u>	<u>10,596,177</u>
Less accumulated depreciation	<u>(3,068,392)</u>	<u>(2,963,358)</u>
	<u>\$ 6,829,159</u>	<u>\$ 7,632,819</u>

5. RENTAL INCOME:

The Church leases rooms and event spaces under non-cancelable operating leases with terms from three months to one year. Several of the leases contain renewal options as well as annual rent increases at fixed amounts. As of September 30, 2025, the Church expects to receive a minimum of \$67,000 of rental income payments in the following fiscal year.

CENTER OF PRAISE MINISTRIES

Notes to Financial Statements

September 30, 2025 and 2024

6. NOTES PAYABLE-NET:

Notes payable-net, consists of:

	September 30,	
	2025	2024
<p>A loan in the amount of \$2,200,000 was refinanced on December 14, 2016. The loan has an effective interest rate fixed at 3.2%. It is amortized over 240 months with monthly principal and interest payments of \$12,423. The loan is secured by the building located on 2150 Capitol Avenue, Sacramento, CA. The loan matures in January 2037.</p>	\$ 1,445,498	\$ 1,547,784
<p>A loan in the amount of \$3,950,000 was refinanced in December 2020. The loan has an effective interest rate fixed at 3.2%. The loan is amortized over 240 months with monthly payments of \$18,421. The loan is secured by the property located on 2223 Capitol Avenue, Sacramento, CA. The loan matures in January 2028 with a balloon payment of \$2,353,725.</p>	3,360,566	3,526,984
<p>A loan in the amount of \$800,000 was taken in June 2022. The loan has an effective interest rate fixed at 5%. The loan was amortized over 84 months with monthly payments of \$11,337. The loan was secured by the property located on 2223 Capital Ave, Sacramento, CA and was set to mature in January 2026. The loan was paid in full in July 2025.</p>	-	634,543
<p>Less prepaid loan fees</p>	4,806,064 (1,819)	5,709,311 (2,092)
	\$ 4,804,245	\$ 5,707,219

CENTER OF PRAISE MINISTRIES

Notes to Financial Statements

September 30, 2025 and 2024

6. NOTE PAYABLE-NET, continued:

Annual maturities are as follows:

<u>Year Ending September 30,</u>	
2026	\$ 278,639
2027	287,766
2028	3,124,482
2029	117,335
2030	121,145
Thereafter	<u>876,697</u>
	<u>\$ 4,806,064</u>

All notes payable are cross collateralized by property and equipment noted above. The net book value of this property and equipment at September 30, 2025 and 2024 was \$5,160,298 and \$5,306,602, respectively.

LOAN FEES

Loan fees are amortized on a straight-line basis over the term of the related outstanding loan and reported net of accumulated amortization. Amortization expense totaled approximately \$1,000 for each of the years ended September 30, 2025 and 2024, and is reported as interest expense in Note 6.

LOAN COVENANTS

In conjunction with the loans, all held at the same financial institution, the Church is required to comply with certain financial and reporting covenants, including a minimum debt service coverage ratio and audited financial statements provided to the bank within a certain time period, respectively. The Church was in compliance with financial covenant related to the debt service coverage ratio as of September 30, 2025 and 2024. The Church had waivers for the time period covenant as of September 30, 2025 and was in compliance as of September 30, 2024.

CENTER OF PRAISE MINISTRIES

Notes to Financial Statements

September 30, 2025 and 2024

7. FUNCTIONAL ALLOCATION OF EXPENSES:

The costs of providing the various program services and supporting activities have been summarized on a functional basis below. Accordingly, certain costs have been allocated among the one or more program services or supporting activities. Expenses were allocated among the functional categories on the basis of specific identification and estimates of time spent and benefits derived. Depreciation and facilities are allocated based on square footage. The following table presents expenses by both their nature and function for the Church for the year ended September 30, 2025:

	<u>Program</u>	<u>Supporting Activities</u>		<u>Total</u>
		<u>General & Administration</u>	<u>Fundraising</u>	
Salaries and benefits	\$ 1,330,950	\$ 358,861	\$ -	\$ 1,689,811
Facilities and maintenance	403,467	69,795	-	473,262
Depreciation	200,130	200,130	-	400,260
Equipment and software	220,309	20,248	1,208	241,765
Interest	-	203,738	-	203,738
Honorarium	92,992	4,894	-	97,886
Professional Fees	85,552	9,422	-	94,974
Office and supplies	66,740	8,526	1,531	76,797
Merchant and bank fees	36,016	11,294	-	47,310
Grants	36,091	2,005	2,005	40,101
Conferences	29,511	3,370	75	32,956
Travel	31,165	1,713	-	32,878
Food	25,425	2,055	-	27,480
Other	23,732	2,039	-	25,771
	<u>\$ 2,582,080</u>	<u>\$ 898,090</u>	<u>\$ 4,819</u>	<u>\$ 3,484,989</u>

CENTER OF PRAISE MINISTRIES

Notes to Financial Statements

September 30, 2025 and 2024

7. FUNCTIONAL ALLOCATION OF EXPENSES, continued:

The following table presents expenses by both their nature and function for the year ended September 30, 2024:

	Program	Supporting Activities		Total
		General & Administration	Fundraising	
Salaries and benefits	\$ 1,304,433	\$ 314,148	\$ -	\$ 1,618,581
Facilities and maintenance	302,923	53,130	-	356,053
Depreciation	199,847	199,846	-	399,693
Equipment and software	151,632	14,576	2,615	168,823
Interest	-	233,413	-	233,413
Honorarium	79,432	4,248	-	83,680
Professional Fees	74,029	8,176	-	82,205
Office and supplies	68,386	8,175	1,562	78,123
Merchant and bank fees	56,000	10,510	-	66,510
Grants	46,802	2,600	2,600	52,002
Conferences	41,200	5,498	90	46,788
Travel	6,560	935	-	7,495
Food	32,478	1,987	-	34,465
Other	16,167	1,429	-	17,596
	<u>\$ 2,379,889</u>	<u>\$ 858,671</u>	<u>\$ 6,867</u>	<u>\$ 3,245,427</u>

CENTER OF PRAISE MINISTRIES

Notes to Financial Statements

September 30, 2025 and 2024

8. RELATED PARTY TRANSACTIONS:

During the years ended September 30, 2025 and 2024, the Church received contributions from board members totaling approximately \$120,000 and \$171,000, respectively.

9. SUBSEQUENT EVENTS:

Management has evaluated subsequent events through the date that the financial statements were available to be issued, February 27, 2026, and determined there were no events that occurred that required disclosure. No subsequent events occurring after this date have been evaluated for inclusion in these financial statements.





IN LOVING MEMORY

And I heard a voice from heaven saying, "Write this: Blessed are the dead who die in the Lord from now on." "Blessed indeed," says the Spirit, "that they may rest from their labors, for their deeds follow them!" Revelation 14:13

We remember those who have fallen asleep in Jesus and are awaiting the resurrection. We celebrate the following sisters and brothers who have transitioned this fiscal year:

<i>01-06-2025</i>	Calise Imani Stewart
<i>01-30-2025</i>	Mother Elizabeth Irene Walker
<i>02-09-2025</i>	Alvin (Big Al) Leroy Sams, Jr.
<i>03-18-2025</i>	Mother Barbara Redmond
<i>07-18-2025</i>	Jerry Newman
<i>07-28-2025</i>	Margaret Mitchell-Ajayi
<i>07-30-2025</i>	Helen Davis McCullough
<i>09-26-2025</i>	Margretta Cannon



OUR VISION

Redemption, Justice, and Empowerment for All People.

OUR MISSION

We engage in developing, multiplying, and sending out disciples of Jesus Christ for the work of the Kingdom.

OUR STRATEGY

HE'S HERE... We Worship
HE KNOWS... We Learn
HE'S ABLE... We Serve

OUR CORE VALUES

Give Generously
Reach Intentionally
Advance Generationally
Care Unconditionally
Educate Passionately





ANNUAL CHURCH REPORT 2025



2150 Capitol Avenue
Sacramento, CA 95816
916.441.3305
Administration@cop.church
cop.church

