

The World's First Photon-Counting Intraoral Sensor

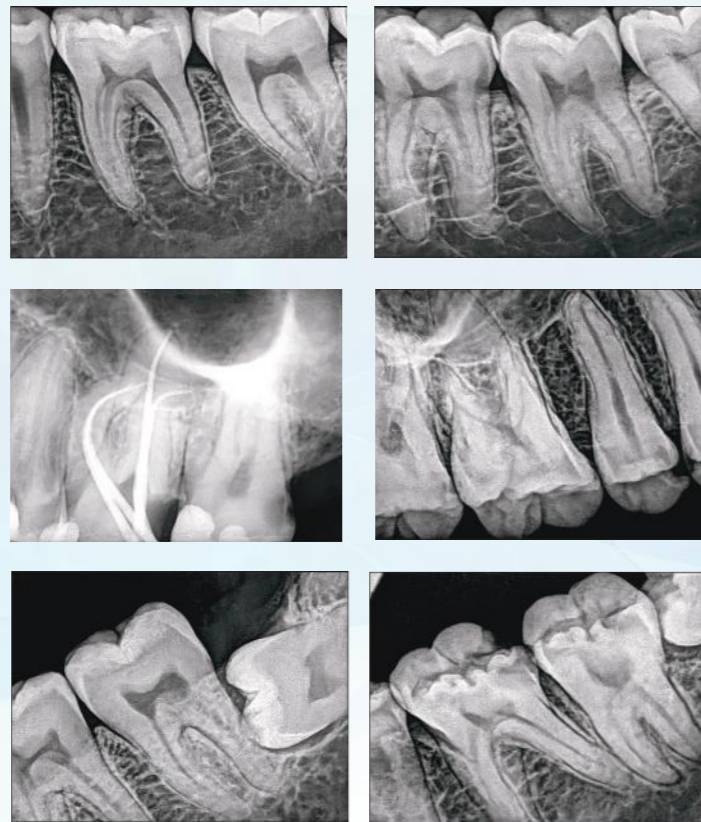
Xpectvision is the world's first to apply the latest photon-counting technology to dentistry, enabling direct imaging, avoiding the interference of light scattering from conventional indirect imaging & ensuring image acquisition stability.

Cutting Edge Technology and Strict Tests Deliver Unrivaled Durability

The Xpectvision intraoral sensor uses silicon-based chips instead of the traditional material, cesium iodide (CsI), avoiding image blurring or performance deterioration.

Competitor	Xpectvision
Cesium Iodide (CsI) Indirect Imaging	Silicon-based chip Direct imaging

Technical Specifications	
Technology Used	Photon Counting Detection (PCD)
Waterproof	Yes
RVG Size	1.5
Effective Imaging Area	25mm x 30mm
Image Resolution	14lp/mm
Pixel Size	-
Sensor Ready for image capture	Manually
License Required	Yes
Cable Quality	Reinforced
Cable Length	3 meters*
Gray Scale	>=16 bit



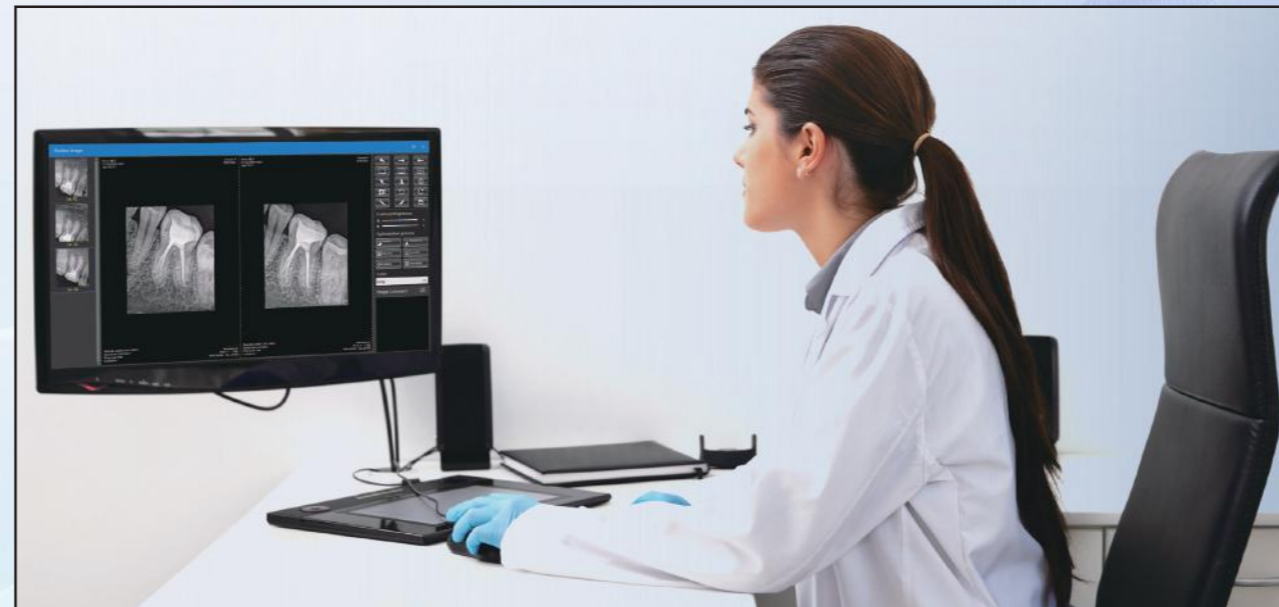
**High-Strength,
Durable Cable**



**Water Resistance
Tested to IEC IP68**



Size 1.5



**DENTAL X-RAY &
INTRAORAL SENSOR**

Unicorn DenMart Ltd.

3 Local Shopping Centre, MOR Land, Near J Block DDA Market, New Rajender Nagar, New Delhi - 60

9821184441, 9599281852, 8448398852 | sales@unicorndenmart.com | www.unicorndenmart.com

*Approx. 3 Meters

PORT-X III

STEADY SELLER

With excellent quality & economy, PORT-X III has been loved steadily by our customers since its launch.



EXCELLENT SHIELDING

0.5mm thick lead shielding protects from X-Ray scattering.



Slimmer | Smarter | Superior



EASY TO USE

The preset exposure time allows you to easily acquire the image quickly.

Technical Specifications		
X-Ray Generator	Type	High Frequency Inverter
	Power Output	180W
X-Ray Installations	Tube Voltage	60 kV
	Tube Current	2mA
	Heat Capacity	8.5 KHU
X-Ray Tube	Anode Type	Stationary
	Anode Angle	20°
	Focal Spot	0.8mm
X-Ray Control	Exposure Time Set	46 Steps (0.01 ~ 2.0 sec)
Power Requirement		22.2 VDC
Weight	Main Body	2.35 kg
	Accessory	0.6 kg
Dimension	Main Body	197 x 147 x 145 (mm)
	Charger	100 x 65 x 35 (mm)

**Ray 98 (Gun Type)
Handheld Portable X-Ray**

IMAGING IN MY CONTROL

MODERN MEDICAL IMAGING TECHNOLOGY
More accurate and more flexible.



Clear Large Screen Display

Button Adjustment
To Improve Diagnostic
Efficiency

Long Handle, Comfortable
To Hold, Easier To Operate

Atmospheric and
Concise Design

Recessed Power Button.
Avoid Accidental Touch



Smart Camera
Angle Assistance



Ergonomic
Design



Long Battery Life



RVG 5200

The RVG 5200 is the perfect choice for those looking to take a first step into digital dental radiography. An ideal solution for intraoral imaging needs, the easy-to-use sensor allows users to capture exceptional images quickly and easily. The image quality of the RVG 5200 sensor is the same or higher than other intraoral sensors in its class - so there is no need to sacrifice image quality for affordability.

Easy to install, so you can use it immediately The RVG 5200's user-optimized quick install & user guides help through the installations process, while the post-installation tool verifies the system is working properly to eliminate downtime.

Technology you can count on

The RVG 5200 sensor is backed by Carestream Dental's decades of experience in digital radiography systems and engineering. To protect your investment, all of the connection points along the sensor cable have been reinforced for added durability, ensuring the sensor can withstand hard pulls and torsions.



Waterproof & fully submersible
for optional infection control

PROVEN RVG TECHNOLOGY
ESTABLISHED RELIABILITY



High Image
Quality



Convenient
quickstart



Maximum
durability



CE / EC US FDA / ISO 13485:2016

Technical Specifications	
Technology	CMOS
True Image Resolution	16 lp/mm
Connection	USB 2.0 - High Speed
Size 1	All Purpose sensor providing the best compromise between ease of use and active area
Outside Dimensions	27.6 x 37.7 mm
Dimensions of Active Area	22.2 x 29.6 mm
Sensor Plate Thickness	7.3 mm

