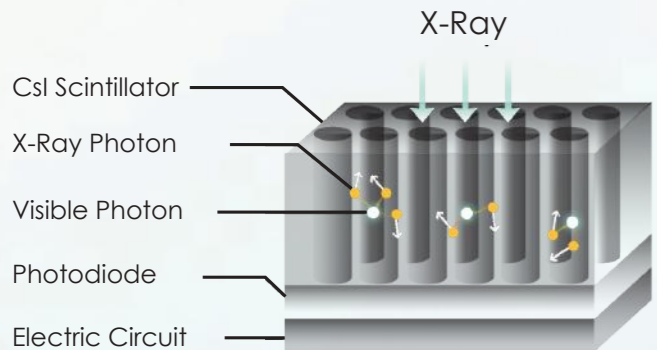
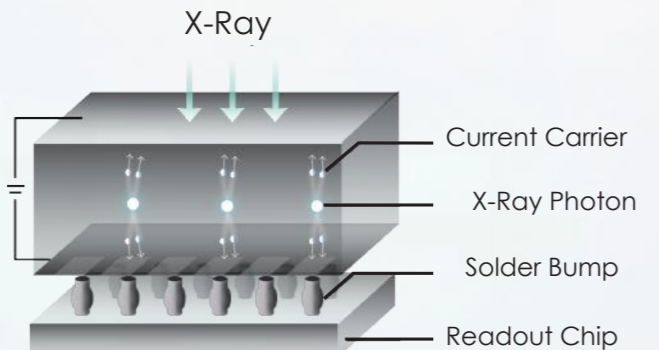


The World’s First Photon-Counting Intraoral Sensor

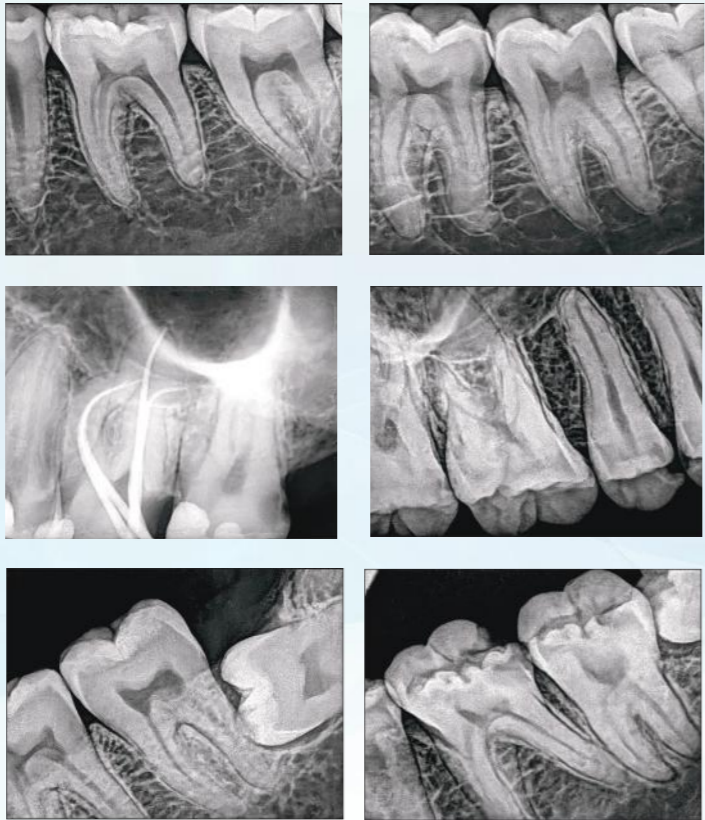
Xpectvision is the world’s first to apply the latest photon-counting technology to dentistry, enabling direct imaging, avoiding the interference of light scattering from conventional indirect imaging & ensuring image acquisition stability.

Cutting Edge Technology and Strict Tests Deliver Unrivaed Durability

The Xpectvision intraoral sensor uses silicon-based chips instead of the traditional material, cesium iodide (Csl), avoiding image blurring or performance deterioration.

| Competitor | Xpectvision |
|--|--|
|  |  |
| Cesium Iodide (Csl) Indirect Imaging | Silicon-based chip Direct imaging |

| Technical Specifications | |
|--------------------------------|---------------------------------|
| Technology Used | Photon Counting Detection (PCD) |
| Waterproof | Yes |
| RVG Size | 1.5 |
| Effective Imaging Area | 25mm x 30mm |
| Image Resolution | 14lp/mm |
| Pixel Size | - |
| Sensor Ready for image capture | Manually |
| License Required | Yes |
| Cable Quality | Reinforced |
| Cable Length | 3 meters* |
| Gray Scale | >=16 bit |



*Approx. 3 Meters

US FDA / EU

Direct Imaging Enables Clearer Images and High Reliability

High-Strength,
Durable Cable



Water Resistance
Tested to IEC IP68



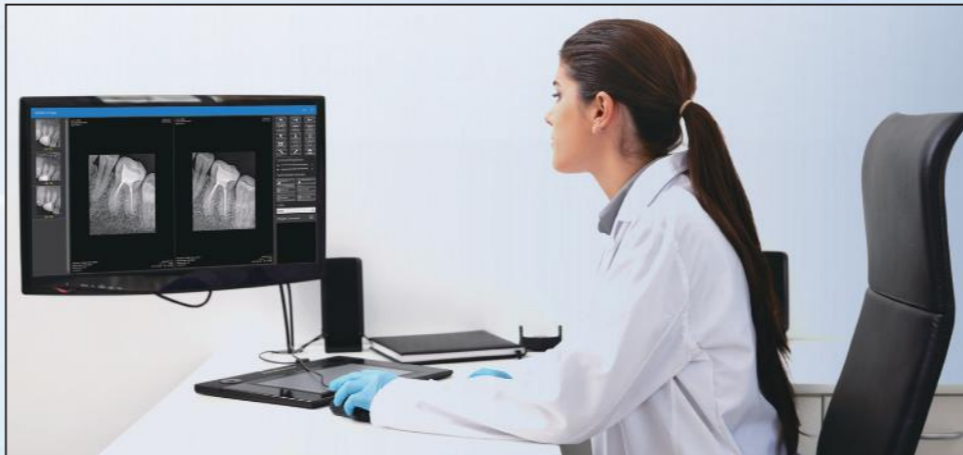
The Xpectvision intraoral sensor uses silica-based chips instead of the traditional material, cesium iodide, avoiding image blurring or performance deterioration.

500,000+ exposures and 100,000+ cable bending tests ensure performance under different working conditions. A shock-resistant and waterproof casing securely protects the sensor.

Ergonomic Design to Maximize Patient Comfort One of the Thinnest X-Ray Sensors on the Market

To better improve the diagnosis experience of patients, the Xpectvision sensor has a more compact design while guaranteeing an adequate sensor area.

Sensor positioners help with quick positioning, significantly reducing patients' discomfort and improving diagnostic efficiency.



Size 1.5



DENTAL X-RAY & INTRAORAL SENSOR

Unicorn DenMart Ltd.

3 Local Shopping Centre, MOR Land, Near J Block DDA Market, New Rajender Nagar, New Delhi - 60

9821184441, 9599281852, 8448398852 | sales@uniorndenmart.com | www.unicorndenmart.com

PORT-X III

STEADY SELLER

With excellent quality & economy, PORT-X III has been loved steadily by our customers since its launch.



EXCELLENT SHIELDING

0.5mm thick lead shielding protects from X-Ray scattering.

EASY TO USE

The preset exposure time allows you to easily acquire the image quickly.

| Technical Specifications | | |
|--------------------------|-------------------|---------------------------|
| X-Ray Generator | Type | High Frequency Inverter |
| | Power Output | 180W |
| X-Ray Installations | Tube Voltage | 60 kV |
| | Tube Current | 2mA |
| | Heat Capacity | 8.5 KHU |
| X-Ray Tube | Anode Type | Stationary |
| | Anode Angle | 20° |
| | Focal Spot | 0.8mm |
| X-Ray Control | Exposure Time Set | 46 Steps (0.01 ~ 2.0 sec) |
| Power Requirement | | 22.2 VDC |
| Weight | Main Body | 2.35 kg |
| | Accessory | 0.6 kg |
| Dimension | Main Body | 197 x 147 x 145 (mm) |
| | Charger | 100 x 65 x 35 (mm) |

Slimmer | Smarter | Superior

Ray 98 (Gun Type) Handheld Portable X-Ray

IMAGING IN MY CONTROL

MODERN MEDICAL IMAGING TECHNOLOGY
More accurate and more flexible.



Smart Camera
Angle Assistance



Ergonomic
Design



Long Battery Life

| Technical Specifications | |
|--------------------------|-------------------|
| Tube Voltage | 70kV±10% |
| Tube Current | 2mA + 20% |
| Input Voltage | 100V-240V |
| Frequency | 50 -60Hz |
| Anode Angle | 12.5° |
| Focus | 0.4mm |
| Exposure Time Range | 0.04s -2.0s |
| Leak Emissivity | 1 meter 0.25mGy/h |
| Machine Weight | 1.7kg |
| Relative Humidity | 30%RH-75%RH |

RVG 5200

The RVG 5200 is the perfect choice for those looking to take a first step into digital dental radiography. An ideal solution for intraoral imaging needs, the easy-to-use sensor allows users to capture exceptional images quickly and easily. The image quality of the RVG 5200 sensor is the same or higher than other intraoral sensors in its class - so there is no need to sacrifice image quality for affordability.

Easy to install, so you can use it immediately The RVG 5200's user-optimized quick install & user guides help through the installations process, while the post-installation tool verifies the system is working properly to eliminate downtime.

Technology you can count on

The RVG 5200 sensor is backed by Carestream Dental's decades of experience in digital radiography systems and engineering. To protect your investment, all of the connection points along the sensor cable have been reinforced for added durability, ensuring the sensor can withstand hard pulls and torsions.



PROVEN RVG TECHNOLOGY
ESTABLISHED RELIABILITY

HD
High Image
Quality

Convenient
quickstart

Maximum
durability



CE / EC US FDA / ISO 13485:2016

| Technical Specifications | |
|---------------------------|--|
| Technology | CMOS |
| True Image Resolution | 16 lp/mm |
| Connection | USB 2.0 - High Speed |
| Size 1 | All Purpose sensor providing the best compromise between ease of use and active area |
| Outside Dimensions | 27.6 x 37.7 mm |
| Dimensions of Active Area | 22.2 x 29.6 mm |
| Sensor Plate Thickness | 7.3 mm |

