

# DENTAL X-RAY & INTRAORAL SENSOR

ADVANCED IMAGING  
EXCEPTIONAL CARE



**HIGH RESOLUTION**  
CLEARER IMAGES



**ACCURATE DIAGNOSIS**  
BETTER OUTCOMES



**FAST & EFFICIENT**  
WORKFLOW



**SAFE & RELIABLE**  
TECHNOLOGY



**IMAGING**  
Superior Image  
Quality



**SLIM SENSOR**  
Comfortable for  
Patients



**DURABLE DESIGN**  
Built for Long Term  
Performance



**COMPATIBLE**  
with Leading  
Software



**TRUSTED BY**  
Dental Professionals  
Worldwide

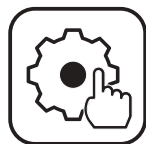
# Ray 98p (Gun Type) Handheld Portable X-Ray

IMAGING IN MY CONTROL

MODERN MEDICAL IMAGING TECHNOLOGY  
More accurate and more flexible.



Smart Camera  
Angle Assistance



Ergonomic  
Design



Long Battery Life

Technical Specifications	
Tube Voltage	70kV±10%
Tube Current	2mA + 20%
Input Voltage	100V-240V
Frequency	50 -60Hz
Anode Angle	12.5°
Focus	0.4mm
Exposure Time Range	0.04s -2.0s
Leak Emissivity	1 meter 0.25mGy/h
Machine Weight	1.7kg
Relative Humidity	30%RH-75%RH

## RVG 5200

The RVG 5200 is the perfect choice for those looking to take a first step into digital dental radiography. An ideal solution for intraoral imaging needs, the easy-to-use sensor allows users to capture exceptional images quickly and easily. The image quality of the RVG 5200 sensor is the same or higher than other intraoral sensors in its class - so there is no need to sacrifice image quality for affordability.

### Easy to install, so you can use it immediately

The RVG 5200's user-optimized quick install & user guides help through the installations process, while the post-installation tool verifies the system is working properly to eliminate downtime.

### Technology you can count on

The RVG 5200 sensor is backed by Carestream Dental's decades of experience in digital radiography systems and engineering. To protect your investment, all of the connection points along the sensor cable have been reinforced for added durability, ensuring the sensor can withstand hard pulls and torsions.



Waterproof & fully submersible for optional infection control

## PROVEN RVG TECHNOLOGY ESTABLISHED RELIABILITY



High Image Quality



Convenient quickstart



Maximum durability



CE / EC US FDA / ISO 13485:2016

Technical Specifications	
Technology	CMOS
True Image Resolution	16 lp/mm
Connection	USB 2.0 - High Speed
Size 1	All Purpose sensor providing the best compromise between ease of use and active area
Outside Dimensions	27.6 x 37.7 mm
Dimensions of Active Area	22.2 x 29.6 mm
Sensor Plate Thickness	7.3 mm



**Xpect Vision Intraoral Sensor – Now Powered by AI**

**The Massive Upgrade Has Arrived: AI + Photon Counting Technology**

Xpect Vision, the pioneer behind the world’s first Photon Counting Intraoral Sensor, has just redefined diagnostic precision by integrating the power of Artificial Intelligence into its cutting-edge imaging platform.

Already celebrated for its revolutionary Photon Counting Detection—a technology that avoids the distortion of light scattering by enabling direct X-ray imaging—Xpect Vision now enters a new era of AI-enhanced dentistry. This upgrade is not just incremental. It’s transformational.

**Cutting Edge Technology and Strict Tests Deliver Unrivaled Durability**

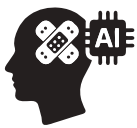
The Xpectvision intraoral sensor uses silicon-based chips instead of the traditional material, cesium iodide (CsI), avoiding image blurring or performance deterioration.

Competitor	Xpectvision
<p>X-Ray</p> <p>Scintillator</p> <p>Visible Photon</p> <p>X-Ray Photon</p> <p>Photodiode</p> <p>Electric Circuit</p>	<p>X-Ray</p> <p>Current Carrier</p> <p>X-Ray Photon</p> <p>Solder Bump</p> <p>Readout Chip</p>
Cesium Iodide (CsI) Indirect Imaging	Silicon-based chip Direct imaging

**What's New: AI-Powered Intelligence, Built Right In**



**AI-Powered Imaging:** Get unmatched clarity powered by advanced algorithms that interpret radiographs in real-time.



**AI-Enhanced Diagnostics:** Identify caries, anomalies, and bone loss more confidently with AI assistance.



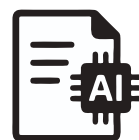
**AI-Assisted Accuracy:** Ensure precise detection of dental structures, root canals, crowns, fillings, and more with zero guesswork.



**AI-Driven Clarity:** Experience next-level contrast, sharpness, and definition to differentiate even the finest structures.



**Real-Time AI Insights:** See diagnostic suggestions instantly—Caries detection, structure identification, and pathology markers pop up live during image acquisition.



**AI-Augmented Reporting:** Create smart, detailed, and structured reports within seconds—ready to share with patients and specialists.

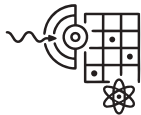


**AI-Empowered Results:** Make faster and more informed clinical decisions, reduce human error, and improve patient communication

## Still the World's First - Still the Best

Xpect Vision remains the first & only intraoral sensor globally to adopt Photon Counting Detection, a technology previously exclusive to clinical CT and high-end medical imaging. This massive upgrade brings AI to the top-tier photon counting framework, offering the most powerful and futuristic imaging solution in modern dentistry.

## Technical Brilliance Meets Clinical Intelligence



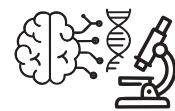
Photon Counting Detection



Clarity You Can Trust



Real-Time Analysis



AI Diagnostics

Xpect Vision Intraoral Sensor – Specifications Comparison		
Speifiation	Size 1	Size 1.5
Technology	Photon-Counting Without Scintillator, Direct Conversion	Photon-Counting Without scintillator, Direct Conversion
Dynamic Range	16 bits	16 bits
Actual Resolution	14~16 lp/mm	14~16 lp/mm
Imaging Area	20 × 30 mm <sup>2</sup>	25 × 30 mm <sup>2</sup>
Dimensions	26.5 × 41.3 mm <sup>2</sup>	31.5 × 41.3 mm <sup>2</sup>
Thickness	5 mm	6 mm
Imaging Time	3 seconds	3 seconds
Image Format	BMP / DIR / DCM / JPEG / PNG / TIFF	BMP / DIR / DCM / JPEG / PNG / TIFF
Connection	USB 2.0	USB 2.0
Waterproof Rating	IP68	IP68
Cable Length	3 meters (Extendable)	3 meters (Extendable)

## Why Choose the Upgraded Xpect Vision Sensor?

### 1. Dual Power: Photon Counting + Artificial Intelligence

- ✦ Captures X-rays directly - **no conversion to visible light**, eliminating image scatter.
- ✦ **AI overlays** immediately flag anomalies, saving time and boosting confidence.

### 2. Unmatched Image Quality and Speed

- ✦ **Delivers HD diagnostic images in under 3 seconds**
- ✦ **500,000+ images lifespan** with consistent quality
- ✦ **Zero image degradation** even after years of use

### 3. Safer for Patients

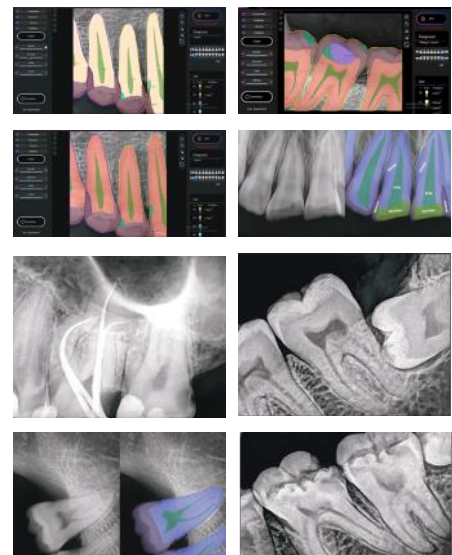
- ✦ Direct detection means **fewer layers and reduced radiation exposure**
- ✦ AI guides your shots-**fewer retakes, faster decisions**

### 4. Built Tough for Everyday Dentistry

- ✦ **Waterproof & Dustproof (IP68)** for total peace of mind
- ✦ Reinforced cable tested for **100,000+ bending cycles**

### 5. Future-Proof Software with Smart Features

- ✦ Intuitive, user-friendly interface
- ✦ **Smart AI report generation**, image management, and sharing
- ✦ Designed for easy integration into your clinic's digital workflow





WHERE TRUST COMES FIRST



**Warranty Ke Saath Bhi  
Warranty Ke Baad Bhi**

**For any Sales & Support**

 9821184441, 8448398852

 [sales@unicorndenmart.com](mailto:sales@unicorndenmart.com)

**Customer Care**

Register Your Complaint with A Missed Call: **7065-558-558**

 011-45551250, 51, 55  97170-12081, 95994 -48518

 [care@unicorndenmart.com](mailto:care@unicorndenmart.com) | [care1@unicorndenmart.com](mailto:care1@unicorndenmart.com)

Connect With



Unicorn DenMart



Corporate Office: 3 Local Shopping Centre, MOR Land, Near J Block DDA Market,  
New Rajender Nagar, New Delhi – 110060

    /unicorndenmart.com

\* Accessories shown may not be a part of standard equipment. Specifications are subject to change without notice.

Ver 06/2026