

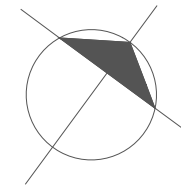
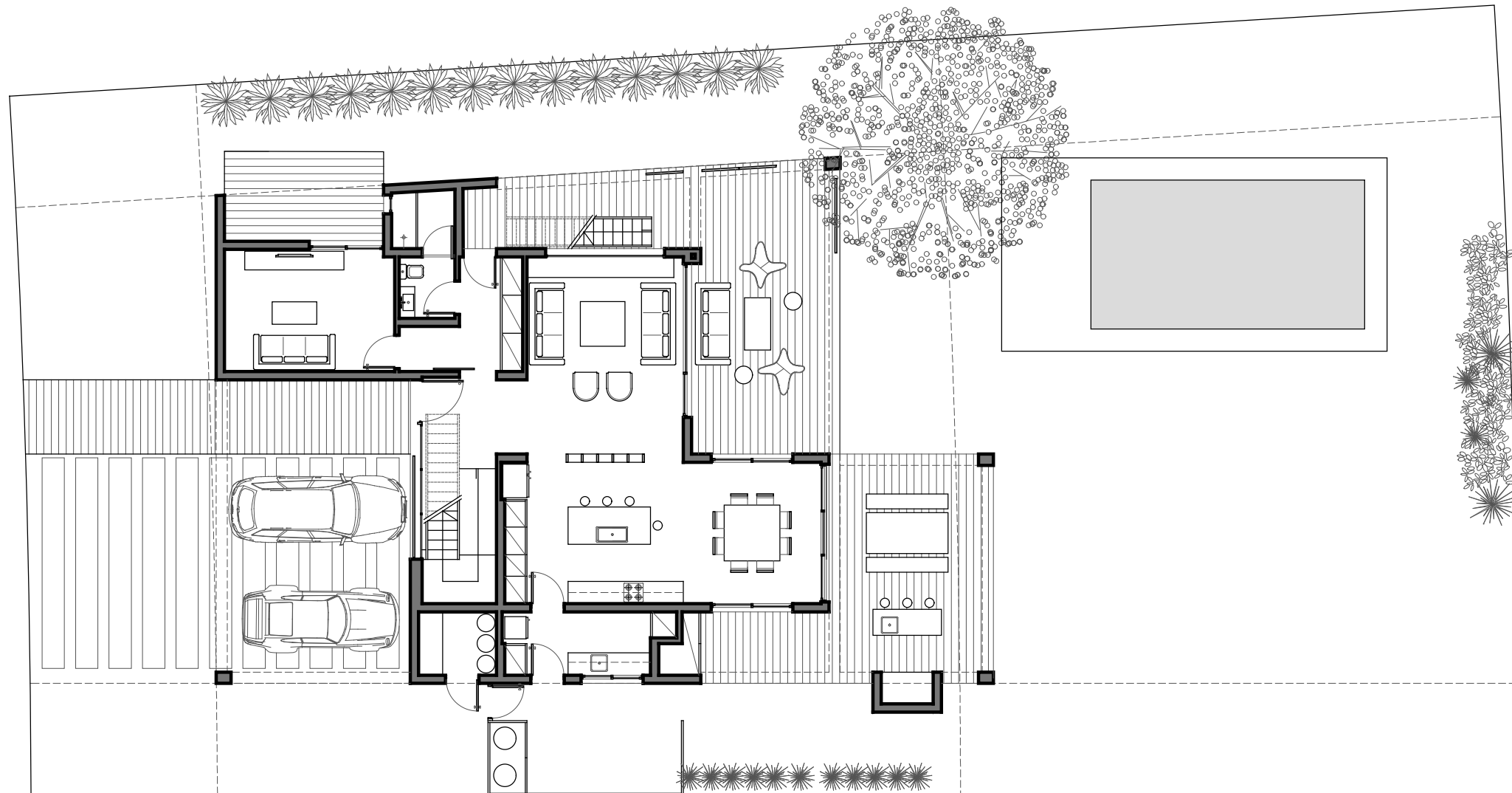
# CASA ILE

EL NAUDIR DELTA









**Planta Baja**

- Hall: 2.82x2.07
- Living: 4.20x5.52
- Cocina: 4.20x3.20
- Toilette: 1.70x3.36
- Comedor: 3.70x3.80
- Escalera: 2.00x4.02
- Lavadero: 3.30x1.70
- Dorm. de H.: 4.58x3.28
- Sala de Maq: 2.00x1.70

**Planta Alta**

- Hall/Estudio: 3.17x4.58
- Dorm. Principal: 3.80x3.73
- Vestidor D. Ppal: 1.40x2.07
- Baño Dorm.Ppal: 3.17x1.80
- Dorm. Chicos 1: 2.85x3.58
- Dorm. Chicos 2: 2.85x3.85
- Baño Chicos: 3.17x1.70

**Semicubiertos:**

- Galería Com.: 4.42x5.86
- Galería Living: 4.00x8.00
- Cochera: 5.22x2.16

**Superficie**

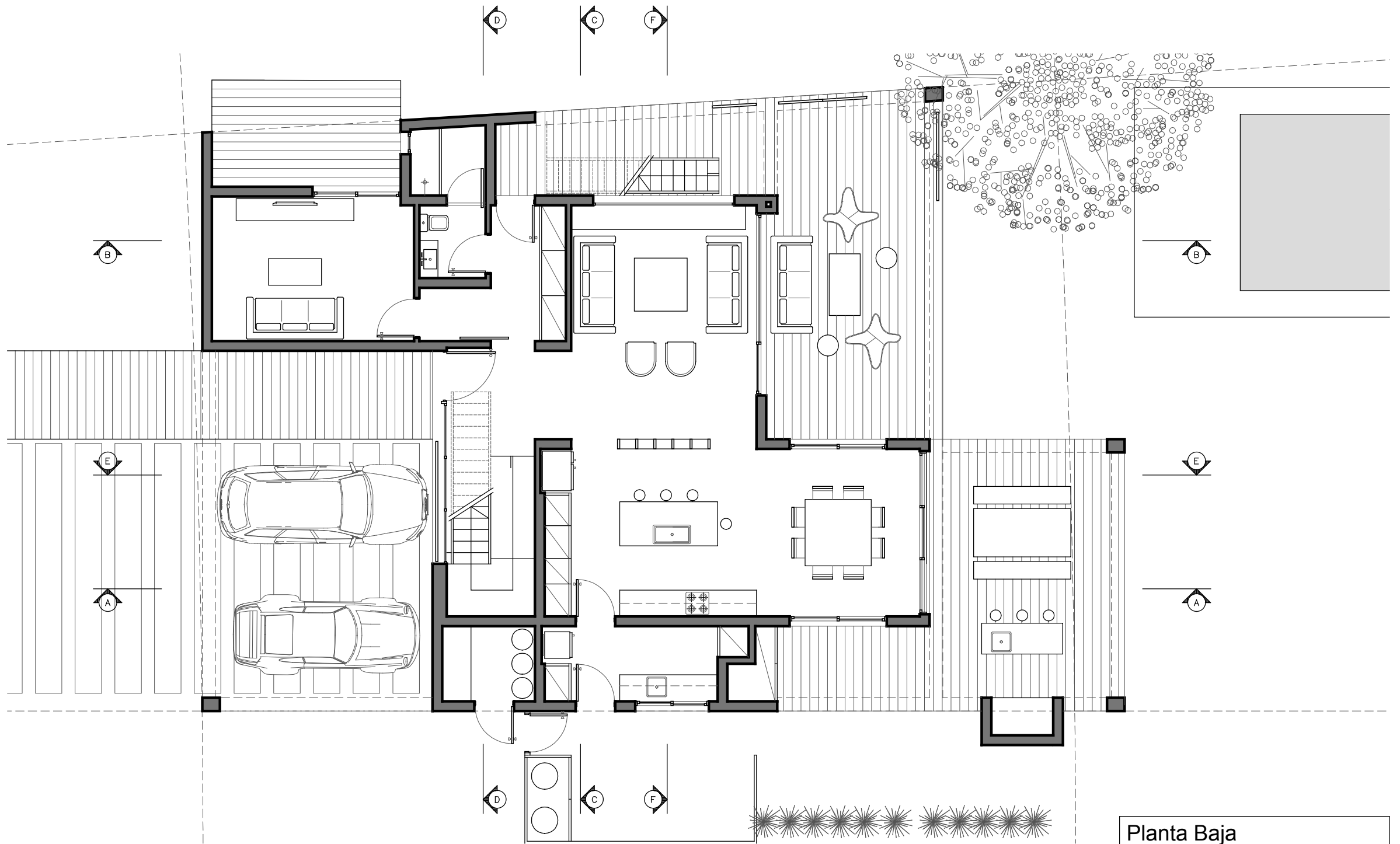
- Cubierta: 227m<sup>2</sup>
- Semicubierta: 29m<sup>2</sup>

**Implantación**





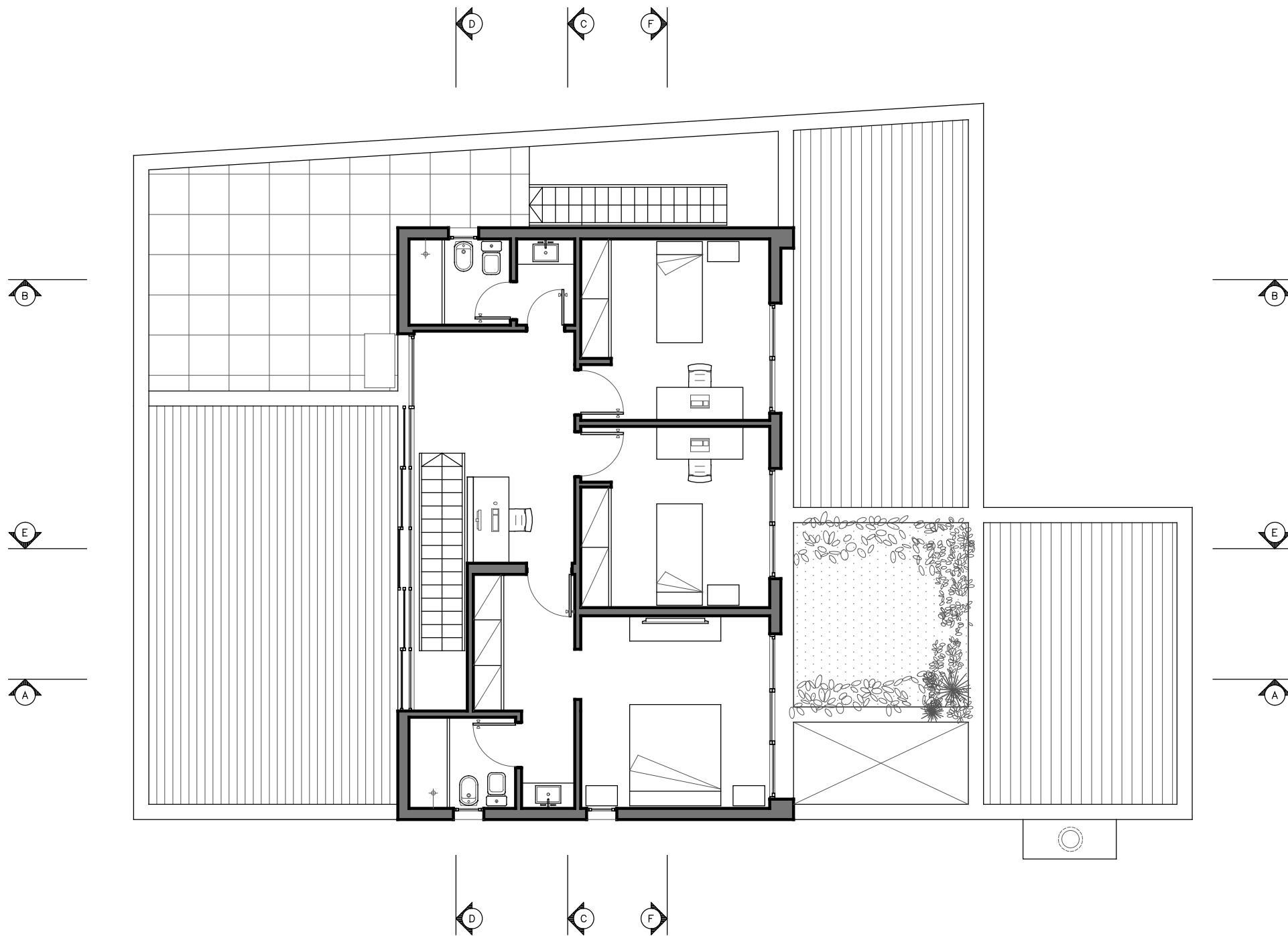




Planta Baja





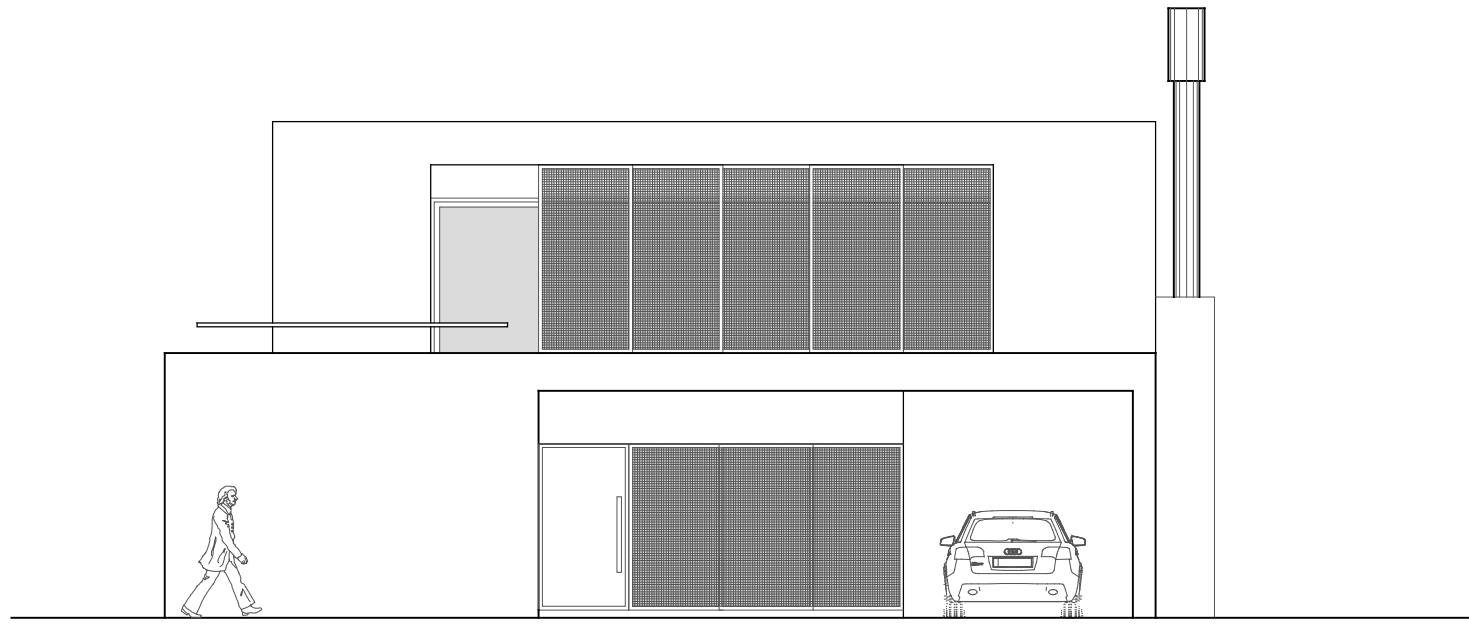


Planta Alta

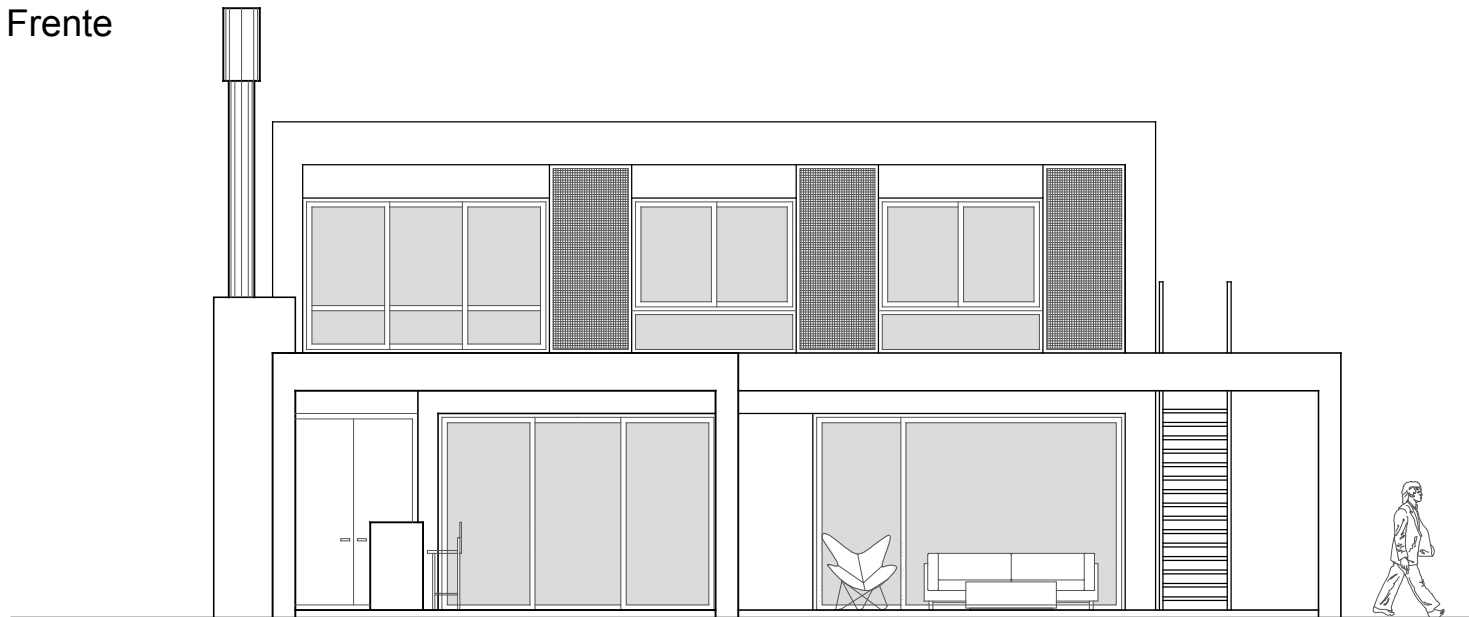






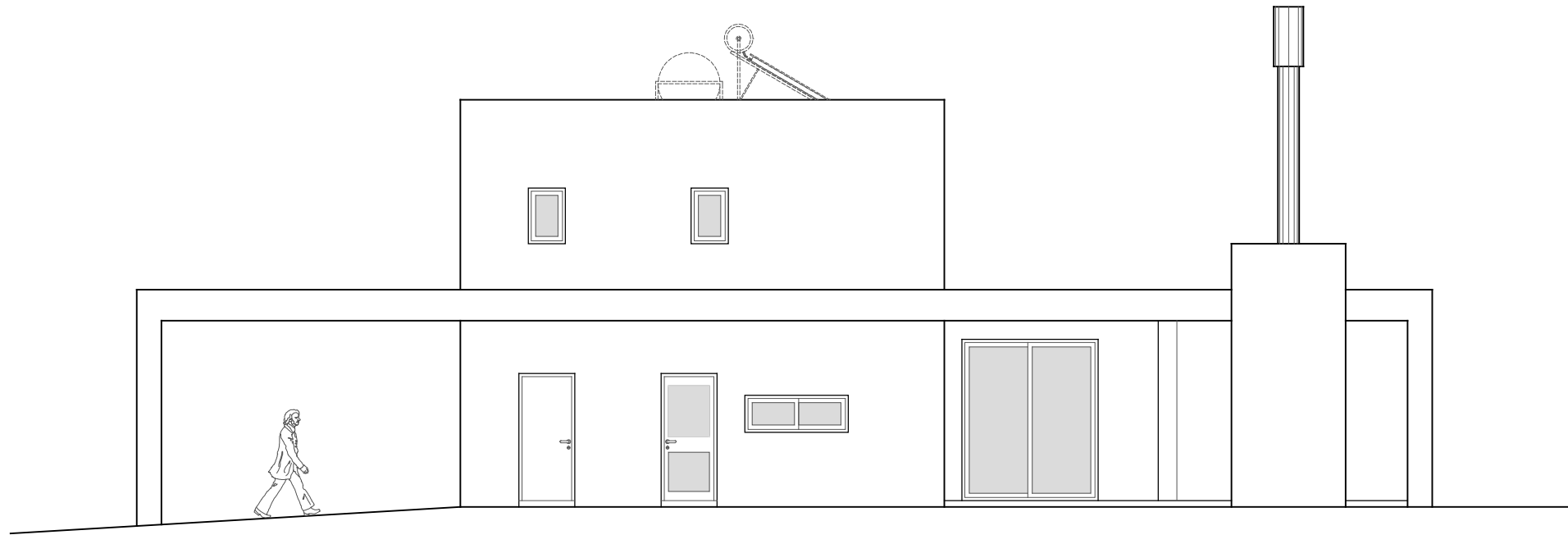


Vista Frente

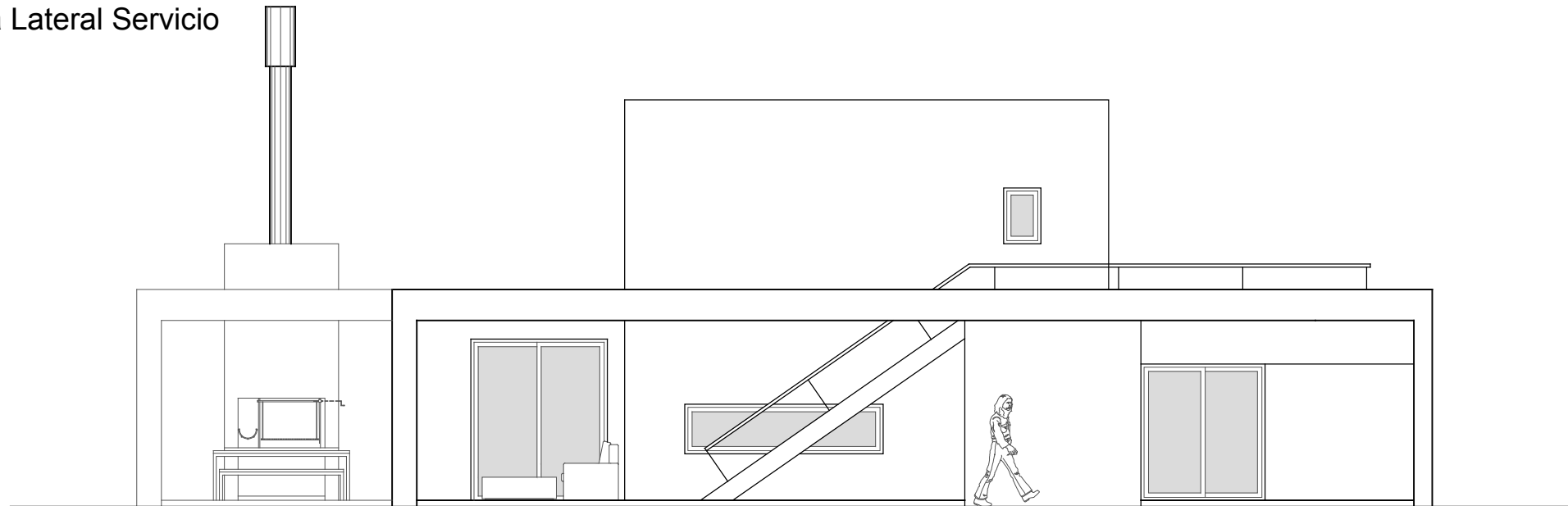


Vista Contrafrente





Vista Lateral Servicio



Vista Lateral Living



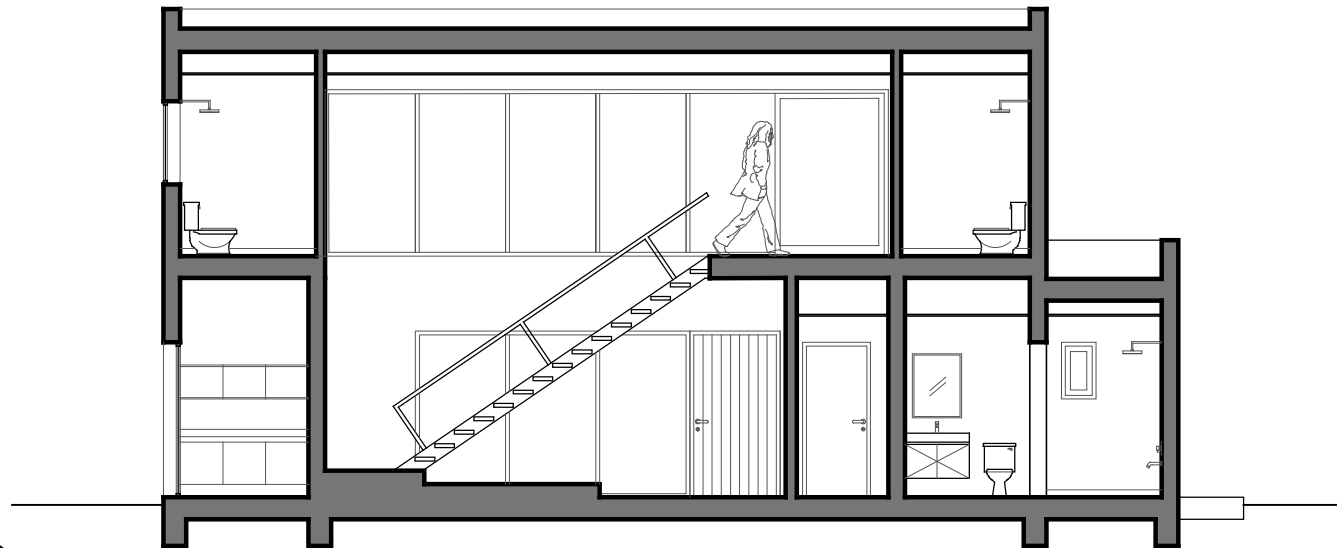






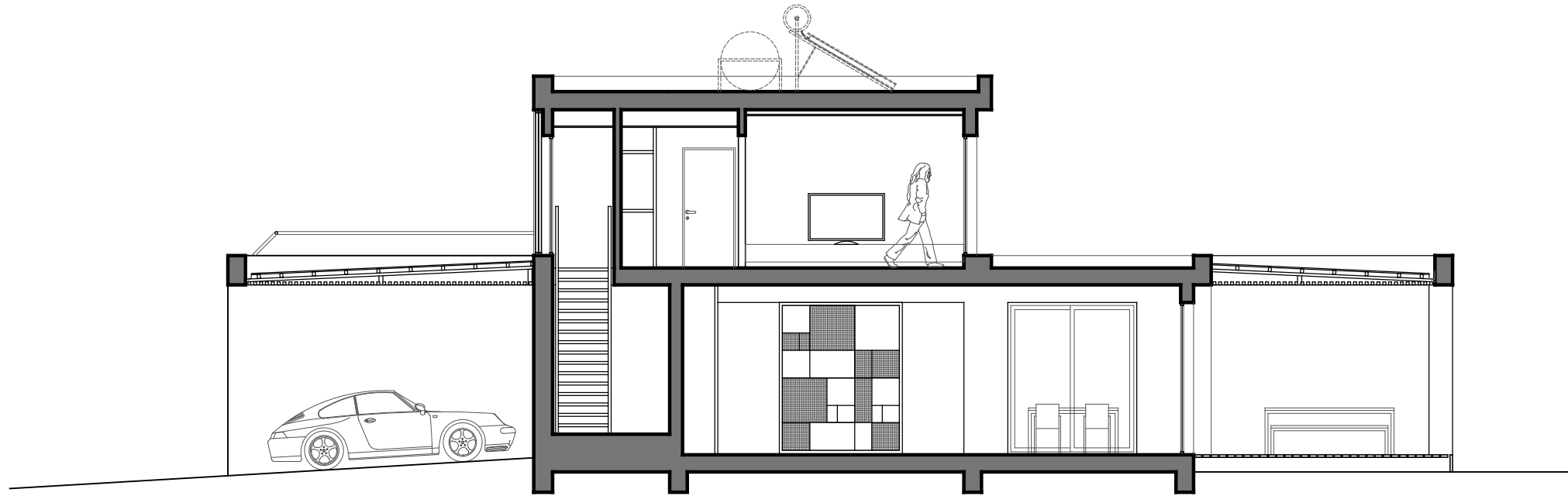


Corte CC



Corte DD



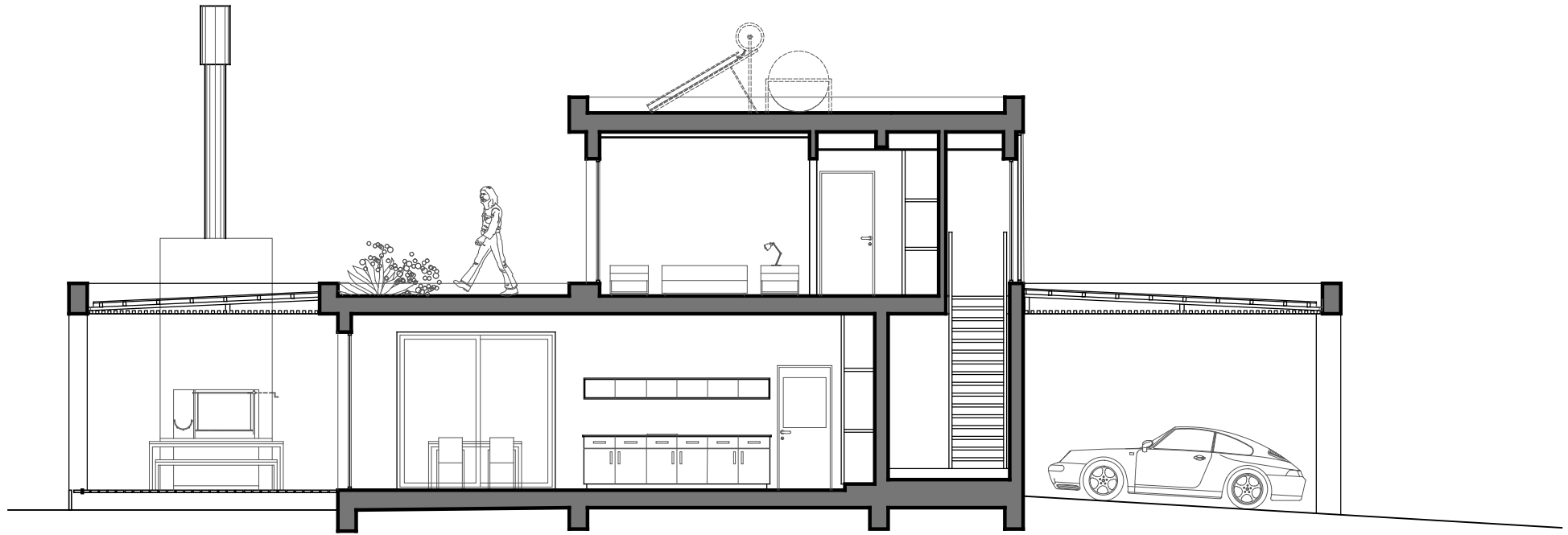


Corte AA

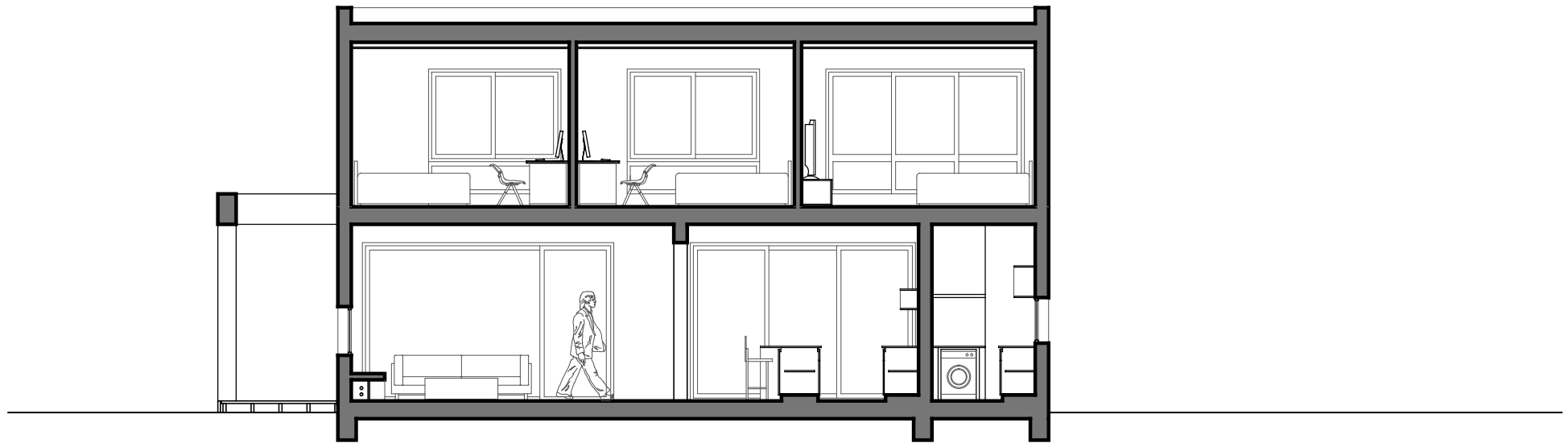


Corte BB





Corte EE



Corte FF











Germán Salas arquitectos















Germán Salas arquitectos

[www.germansalasarq.com](http://www.germansalasarq.com)