

# CAPABILITY STATEMENT

## COMMERCIAL AIR-CONDITIONING

Design - Installation - Maintenance - Service



**HIGHRISE**  
— COMMERCIAL —

- 📞 0432 296 009 - 03 9803 2308
- 🌐 [www.highrisemechanical.com.au](http://www.highrisemechanical.com.au)
- ✉ [jake@highrisemechanical.com.au](mailto:jake@highrisemechanical.com.au)
- 📍 28/170 Forster Rd, Mount Waverley VIC 3149



# CONTENTS

## ABOUT US

The Company	3
Directors Statement	4
Services	5
Highrise Group	6
Organisation Chart	7

## CULTURE

Meet The Team	8
Great Place To Work®	10
Team News	13

## PROJECTS

Case Studies	14
Builders	17
Account Partners	18

CONTACT US	19
------------	----



# THE COMPANY

## PARTNERSHIPS

Highrise prides itself on our strong partnerships that are built on trust and open communication. This propels us to consistently exceed expectations and drive mutual success.

## COMPLIANCE

We have all necessary insurance required by law. We also deliver on any commercial project from pre construction to completion with full AS3000 compliance and a Reg 126.

## CERTIFICATIONS

We hold the necessary licenses and certifications required for our services.



## EXPERIENCE

Highrise has over 25 years' experience in the mechanical and refrigeration industry. We are expert commercial contractors specialising in major projects ranging from \$100K - \$5M.

## QUALITY

Highrise follows strict quality control procedures to ensure all jobs are done right the first time. Preventative maintenance contracts are supplied with every job.

## COST & TRANSPARENCY

Highrise values honest pricing. We work with our clients to provide the most cost-effective and compliant design solutions for all projects.



# DIRECTOR'S STATEMENT

## DIRECTOR'S STATEMENT

### From HVAC Entrepreneur to Industry Leader

Crafting a thriving business in the commercial mechanical plumbing and air-conditioning sector is about more than the transactions—it's about creating a workplace where culture and leadership drive success. By cultivating an environment of excellence and adaptability, our company has achieved remarkable growth and industry recognition in under 5 years.

Trading in multiple states we have become an industry leader and built a reputation as a consistent commercial contractor. Our primary focus is working hand-in-hand with the builder, consultants, project superintendent, and engineers on the job to ensure the project is delivered on time, to budget and to the highest industry standards.



**Jake Vetouladitis**  
**MANAGING DIRECTOR**

A handwritten signature in black ink, appearing to read 'Jake Vetouladitis'.



- 0432 296 009 - 03 9803 2308
- [www.highrisemechanical.com.au](http://www.highrisemechanical.com.au)
- [jake@highrisemechanical.com.au](mailto:jake@highrisemechanical.com.au)
- 28/170 Forster Rd, Mount Waverley VIC 3149



# SERVICES



### DESIGN & CONSTRUCT

With over 25 years' experience in the mechanical and refrigeration industry, Highrise are the leaders in commercial design and construct projects across Melbourne and Adelaide.

With internal capabilities of design, engineering, drafting and certification you won't need to look any further!

We can deliver on any commercial project from pre construction to completion with full AS3000 compliance and a Reg 126.



### COMMERCIAL INSTALLATION

Our team at Highrise are expert commercial contractors specialising in major projects ranging from \$100K - \$5M.

An efficient air conditioning and ventilation system is crucial to maintaining a comfortable and safe atmosphere for your commercial property.

Here at Highrise, we are dedicated to ensuring you, your employees, clients, and the like are comfortable all year round and only breathing in the freshest air.



### SERVICE & MAINTENANCE

Highrise has a dedicated service and maintenance team for all your inner-city office and maintenance needs.

We can offer:

- \* Full DLP maintenance contracts
- \* a complete BMS (building management system)
- \* Ongoing maintenance & service agreements

We recommend regular maintenance and servicing of your air conditioning and ventilation systems, to ensure longevity and optimal function / keep systems running at their best.

# HIGHRISE GROUP

## HIGHRISE GROUP

### HIGHRISE — MECHANICAL SERVICES —

**Highrise Mechanical Services** serves as the backbone of our operations, delivering exceptional mechanical services across a diverse range of sectors in Melbourne. With a commitment to quality, innovation, and precision, we have earned a reputation for excellence in the mechanical plumbing industry, tackling projects of varying complexity and scale. Our Melbourne headquarters provides the foundation for the seamless integration of all our divisions.

### HIGHRISE — COMMERCIAL —

**Highrise Commercial** focuses on large-scale projects valued at \$1 million and above. Our experienced team ensures every project is completed to the highest standards, transforming the commercial landscape with each development.

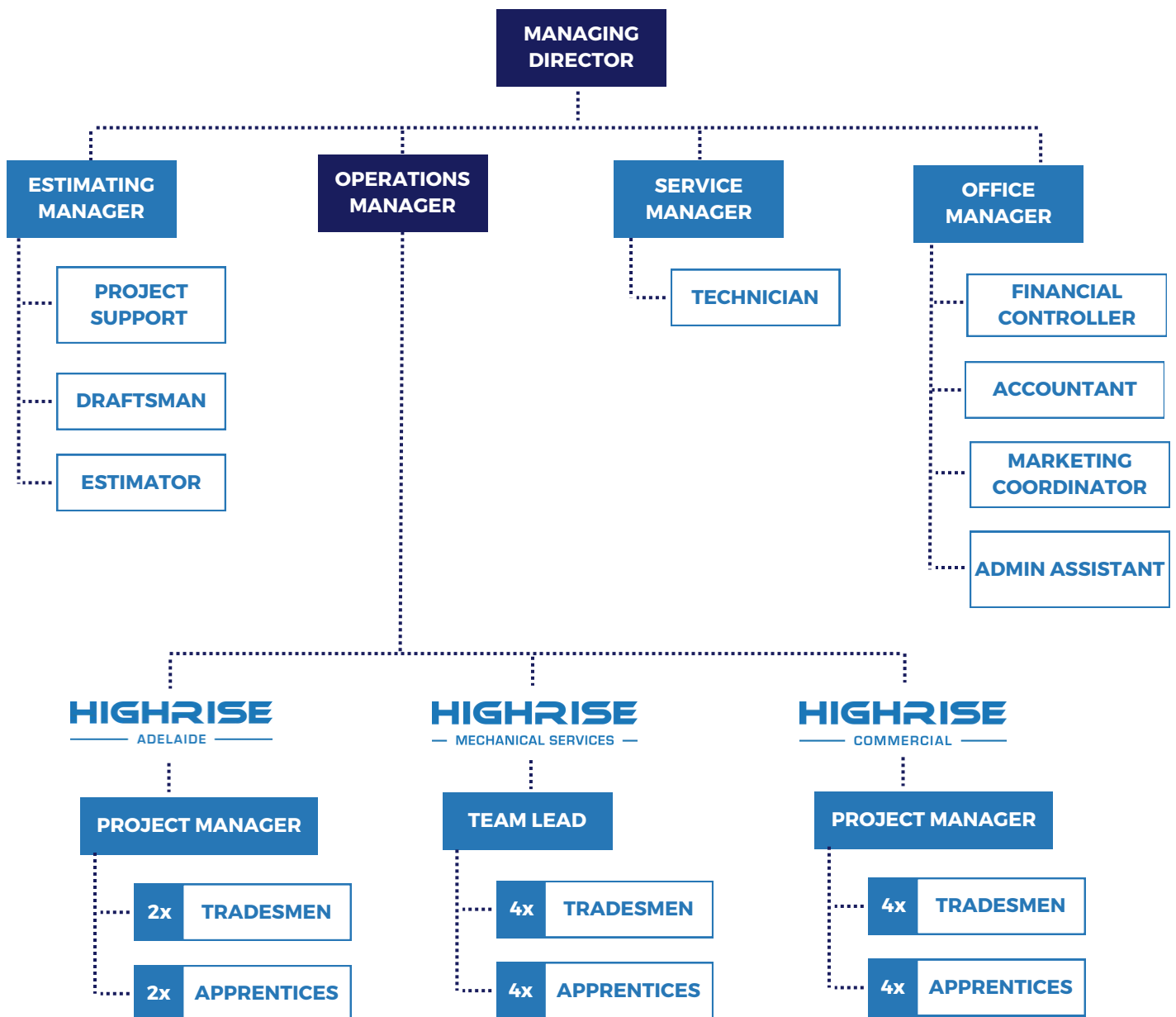
### HIGHRISE — ADELAIDE —

#### **Highrise Adelaide**

is dedicated to commercial projects based in South Australia. Hand-picked to uphold the same high standards of excellence and quality as our Melbourne headquarters, this dedicated team ensures seamless delivery and exceptional results.

# ORGANISATION CHART

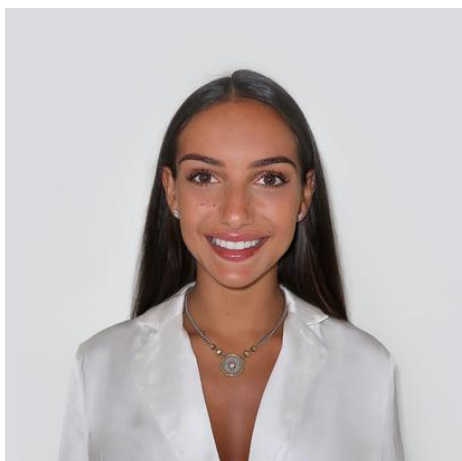
## HIGHRISE ORGANISATION CHART





# THE TEAM

Our management team combines a wealth of knowledge and experience to ensure you receive the highest level of service and expertise.



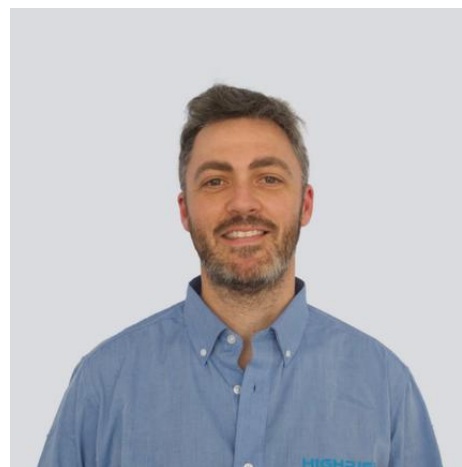
### Nassia Vetouladitis

#### CREATIVE DIRECTOR

---

With over a decade of experience in the creative industry, Nassia brings a unique blend of innovation, design, and strategic thinking to her role as Creative Director at Highrise.

Nassia oversees all creative aspects of the business and works closely alongside Jake to ensure the overall business structure and major business decisions are a seamless and collaborative effort.



### Paul Everton

#### OPERATIONS MANAGER

---

With 15 years of experience in the mechanical plumbing industry, Paul has established himself as an invaluable member of the Highrise team.

Paul's extensive experience spans across various project types, including multi-residential, schools, aged care facilities, commercial fit-outs, stadiums, and he even worked multiple seasons on 'The Block' as the lead HVAC installer.



### Tienna Ha

#### FINANCIAL CONTROLLER

---

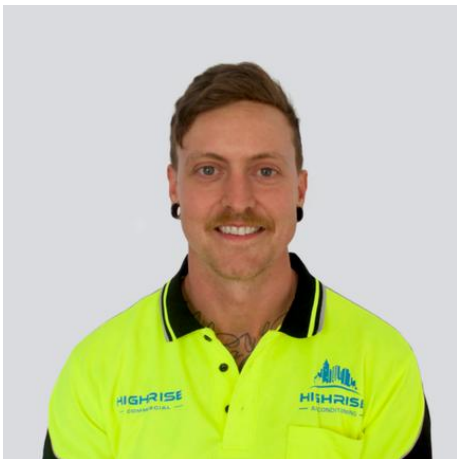
Tienna is responsible for overseeing the company's financial operations, ensuring accurate financial reporting, managing budgets, and controlling cash flow. She provides strategic financial insights to support management decisions while managing day-to-day financial tasks.

Tienna combines her financial expertise with a creative edge, that significantly contributes to the company's growth.



# THE TEAM

Our management team combines a wealth of knowledge and experience to ensure you receive the highest level of service and expertise.



**Nick Harry**

### PROJECT MANAGER

---

With over 20 years of industry experience, Nick has been an integral part of the Highrise team. He has developed a strong foundation in both plumbing and mechanical systems through his completion of a Cert IV in Building and Construction, as well as parts of Cert IV in Plumbing, which has enabled him to become licensed in gas, water, and mechanical services. Nick's expertise has significantly contributed to a wide range of projects.



**Chris Penberthy**

### TEAM LEADER

---

Chris is a seasoned professional in the plumbing industry, bringing a wealth of experience from his diverse background. Since starting his plumbing apprenticeship in 2010 Chris has significantly contributed to an array of notable projects.

His extensive skill set encompasses refrigeration, hydronic heating, sprinkler fitting, and various ductwork systems, which he has honed through years of hands-on experience.



**Rosa Robins**

### PROJECT SUPPORT

---

Rosa has over 7 years of experience in the construction industry. She began her career in telecommunication construction and later progressed to a Contracts Administrator role with a renowned Victorian builder.

In her current position, Rosa oversees projects from initial tender to contract completion. She also collaborates creatively with Nassia and Tienna.

# GREAT PLACE TO WORK

Highrise are incredibly proud to be a Great Place to Work® certified company! with an exceptional score of 93%!



Our Great Place to Work® certification is a testament to the incredible work environment we've built — one that values accountability, reliability and above all, culture.

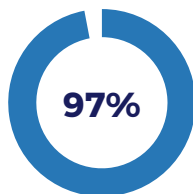
Here are some of the key results that we're most proud of:



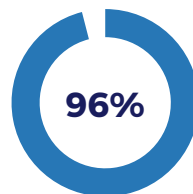
**Justice**



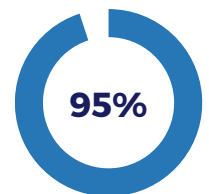
**Hospitality**



**Camaraderie**



**Caring**



**Engagement**

This recognition wouldn't be possible without our incredible employees who make this company not only a great place to work but a great place to grow and thrive.

We're excited for the future and will continue to create a workplace where every individual can succeed and feel valued.



CULTURE

# GREAT PLACE TO WORK





CULTURE

# GREAT PLACE TO WORK





# TEAM NEWS

Our monthly newsletters showcase our projects and celebrate our successes as we continue to grow with our valued employees, builders and account partners.





## CASE STUDIES



### HEIRLOOM APARTMENTS

**BUILDER** COBILD

**ADDRESS** 1187 High Street, Armadale VIC 3143

**PROJECT TYPE** Mixed-Use Project

**CONTRACT VALUE** \$1.8 Million

Full mechanical scope awarded to Highrise for works on the new premier luxury apartments. This project features 39 oversized apartments with landscaped terraces and immaculate city views.

### DUSK APARTMENTS

**BUILDER** LUCY COMMERCIAL

**ADDRESS** 19 Saint Johns Row, Glenelg SA 5045

**PROJECT TYPE** Residential

**CONTRACT VALUE** \$850,000

A new luxury 13-level penthouse style apartment tower located just off the Esplanade in the heart of Glenelg beach. Each apartment will be on its own level with great views of the ocean and Adelaide Hills.



### NEST AT BELL

**BUILDER** V-STRUCT

**ADDRESS** 176-180 High Street, Preston VIC 3072

**PROJECT TYPE** Mixed-Use Project

**CONTRACT VALUE** \$900,000

Full mechanical scope awarded to Highrise for works on the new 9-storey high quality mixed-use development comprising of 52 apartments and a retail activation at street level.



## CASE STUDIES



### THE BROOKVILLE

**BUILDER** VCON

**ADDRESS** 3-5 Brookville Road, Toorak VIC 3142

**PROJECT TYPE** Multi-Residential

**CONTRACT VALUE** \$400,000

Full mechanical services package for 10 high-end apartments located in the heart of Toorak. This 3-story building offers 2 and 3 bedroom apartments and penthouse options.

### NIGHTINGALE UMARKOO WAYI

**BUILDER** COBILD

**ADDRESS** 170 Sydney Road, Coburg VIC 3058

**PROJECT TYPE** Mixed-Use Project

**CONTRACT VALUE** \$500,000

Full mechanical services package for a brand new 8-storey public housing building featuring 48 homes, including lofty SOHO-style apartments and 2 commercial tenancies at street level.



### SEDDON SQUARE

**BUILDER** V-STRUCT

**ADDRESS** 43 Buckley Street, Seddon VIC 3011

**PROJECT TYPE** Mixed-Use Project

**CONTRACT VALUE** \$1.3 Million

A brand new, multi-stage development comprising a collection of 1-3 bedroom apartments and townhouses that make up a total of 77 homes in Melbourne's inner west suburbs.



## CASE STUDIES



### 222 HODDLE STREET

**BUILDER** EJB HOLDINGS

**ADDRESS** 222 Hoddle Street, Collingwood VIC

**PROJECT TYPE** Office Fit-out

**CONTRACT VALUE** \$1.1 Million

A contemporary 9-level office building, featuring a 5-star Green Star rating. Initially awarded the office fit-out for levels 7, 8, 9 and the roof, the project later expanded to include levels 4, 6, and subsequently 3 and 5.

### LENDLEASE ALTONA

**BUILDER** FDC CONSTRUCTION & FITOUT

**ADDRESS** 47 Westgate Drive, Altona North VIC

**PROJECT TYPE** Industrial

**CONTRACT VALUE** \$400,000

A 300 sqm industrial development located within the inner west of the Melbourne industrial precinct. The project includes an office fit-out package featuring rooftop packing units and a battery room ventilation system.



### NUNAWADING CHRISTIAN COLLEGE

**BUILDER** LORDENVELLA

**ADDRESS** 161 Central Road, Nunawading VIC 3131

**PROJECT TYPE** Commercial

**CONTRACT VALUE** \$202,500

Mechanical package for a co-educational Christian college in Melbourne's eastern suburbs. This modern two-storey building was designed to promote collaborative and interactive education.



## PROJECTS

# BUILDERS

**HIGHRISE** are proud to work with the following builders.

COBILD™

V-STRUCT

FDC



LORDEN  
VELLA.

VIACON

& E.J.B

schiaavello

TERNARY

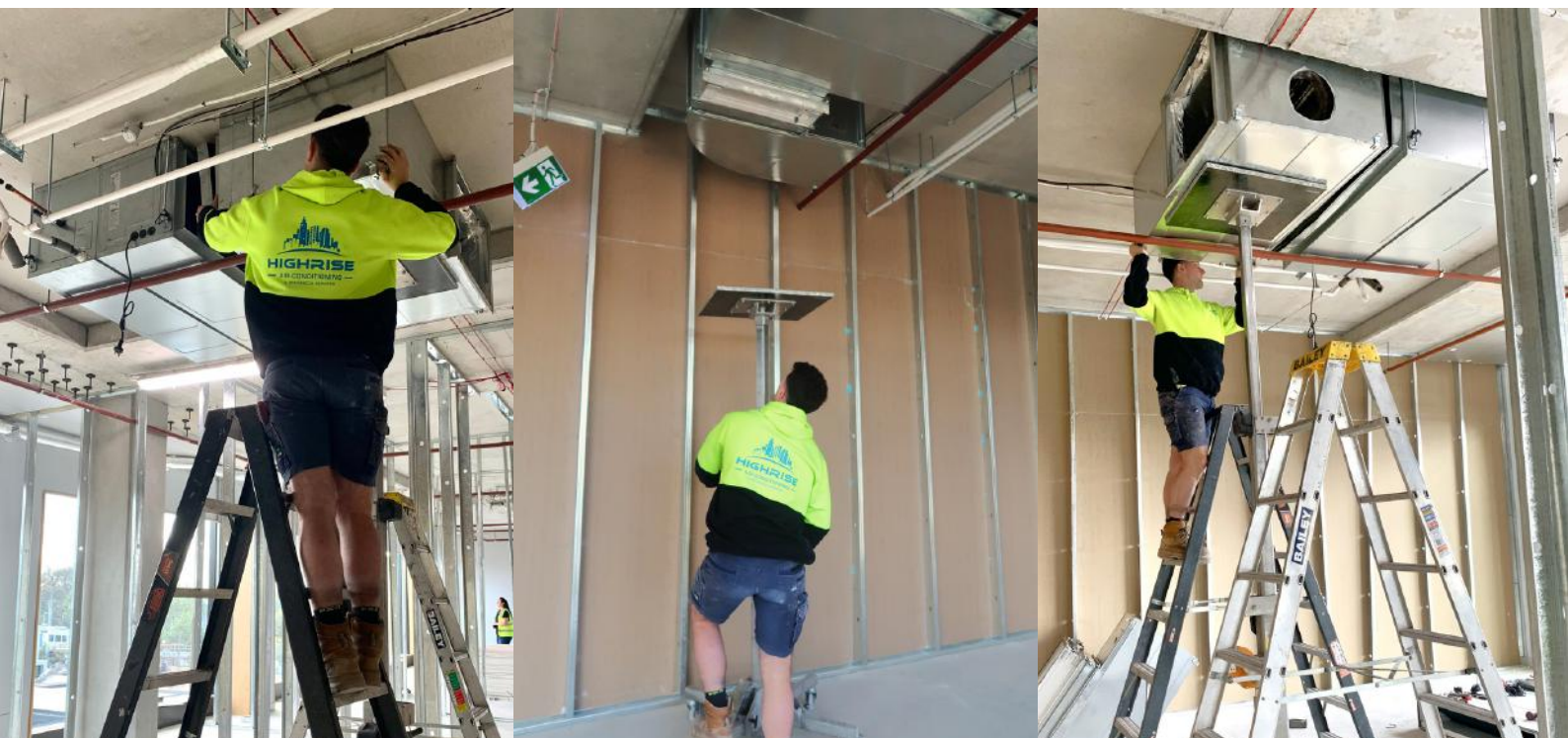
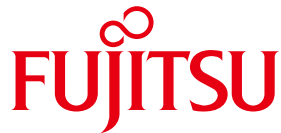




## PROJECTS

# ACCOUNT PARTNERS

**HIGHRISE** are proud to be authorised resellers & service agents to our trusted commercial partners.





# HIGHRISE

© 2025 All rights reserved Highrise Group Pty Ltd



03 9803 2308



jake@highrisemechanical.com.au  
projects@highrisemechanical.com.au



[www.highrisemechanical.com.au](http://www.highrisemechanical.com.au)



28/170 Forster Rd, Mount Waverley VIC 3149

## BUILD WITH CONFIDENCE

With over 25 years experience, our work is superior, certified and guaranteed.