



2022
ein wildes Jahr



































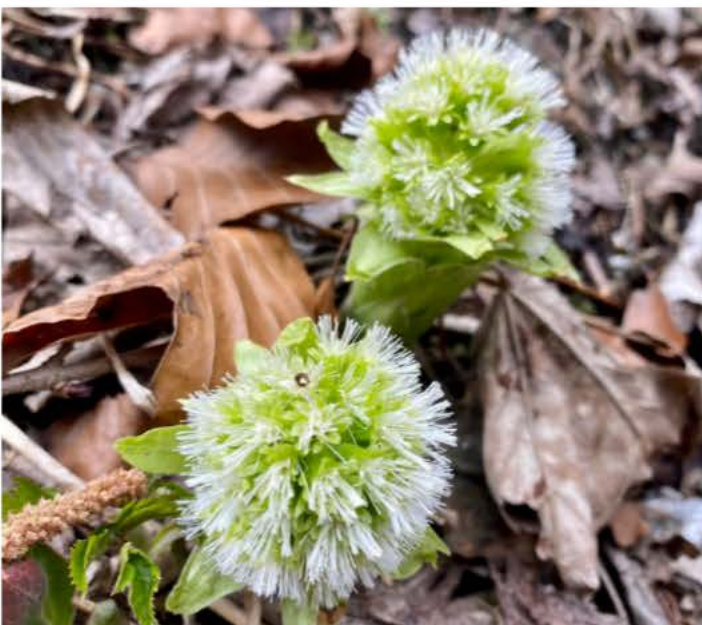




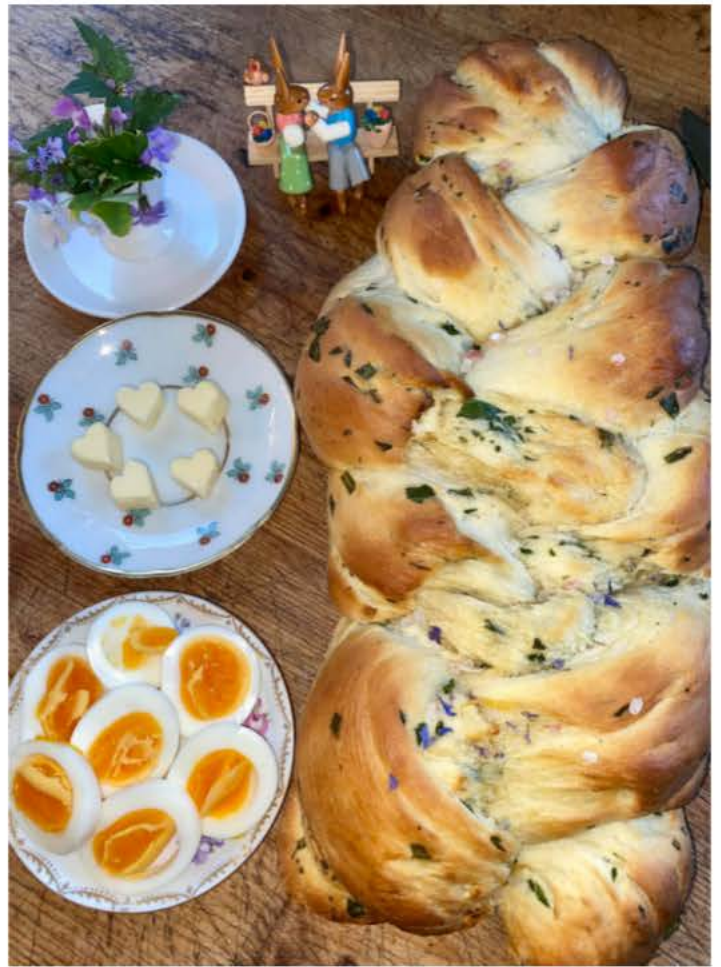


An educational poster about the European rabbit (Hase) is displayed. At the top, the title "Hase" is written in large green letters, with the scientific name "Lepus europaeus" below it. The poster features a central photograph of a real grey rabbit. Surrounding this are several smaller images: a chocolate bunny on a red background, a chocolate bunny on a yellow background, a chocolate bunny on a purple background, and a chocolate bunny on an orange background. Text boxes provide information about the rabbit's characteristics, such as "Kurz und kräftig" (short and sturdy) and "Wissenswertes" (interesting facts). A small icon of a rabbit is also present.







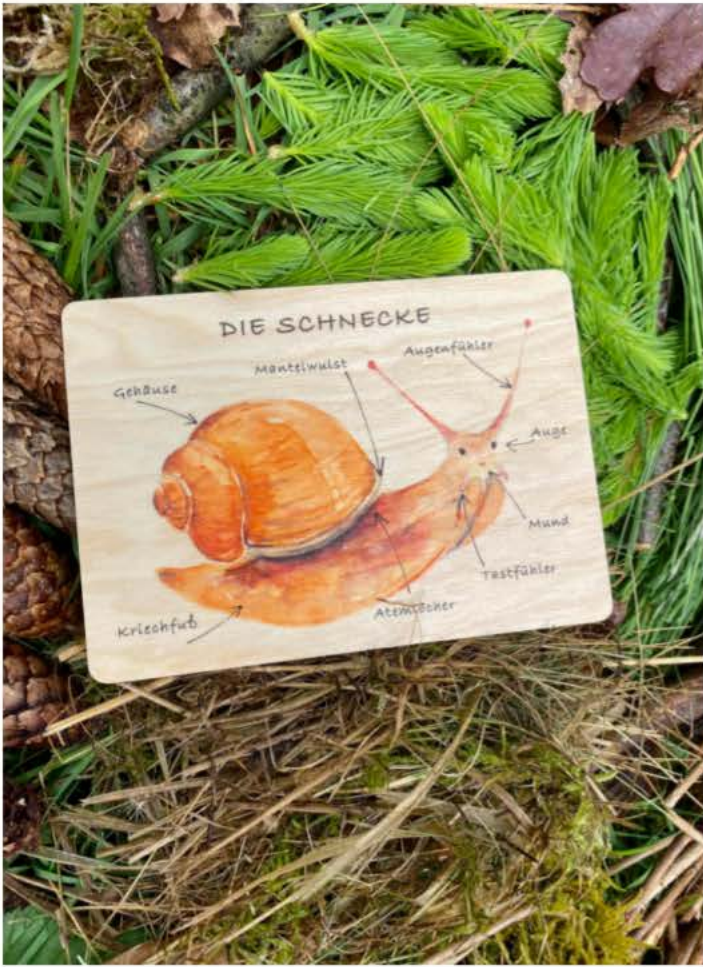






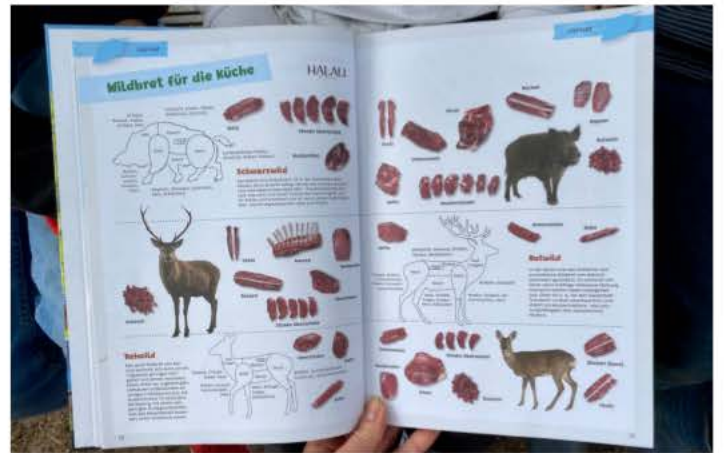






















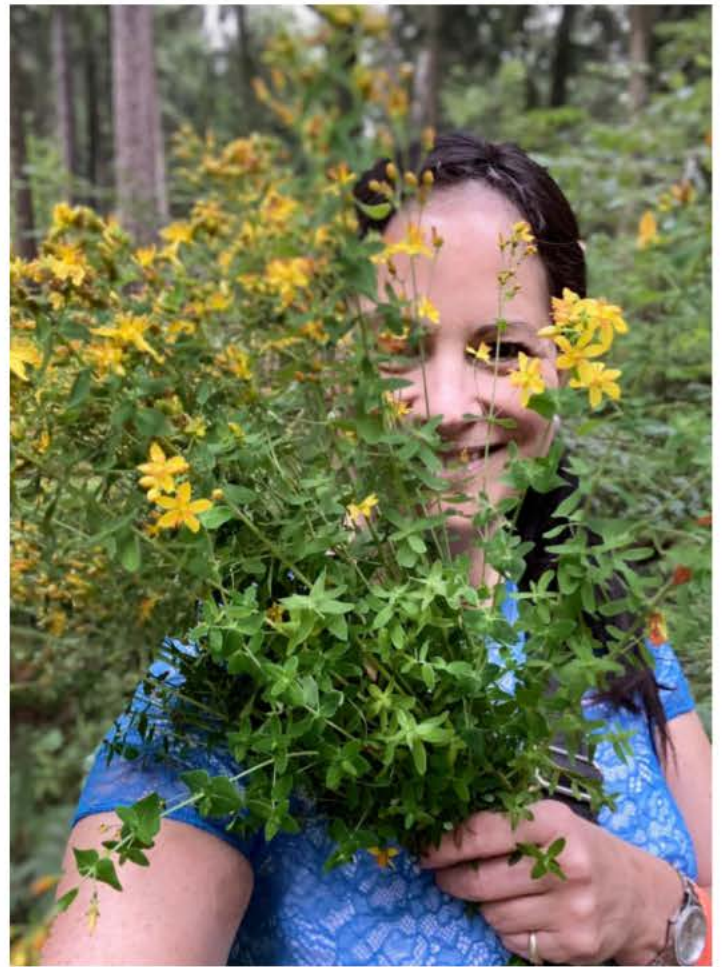














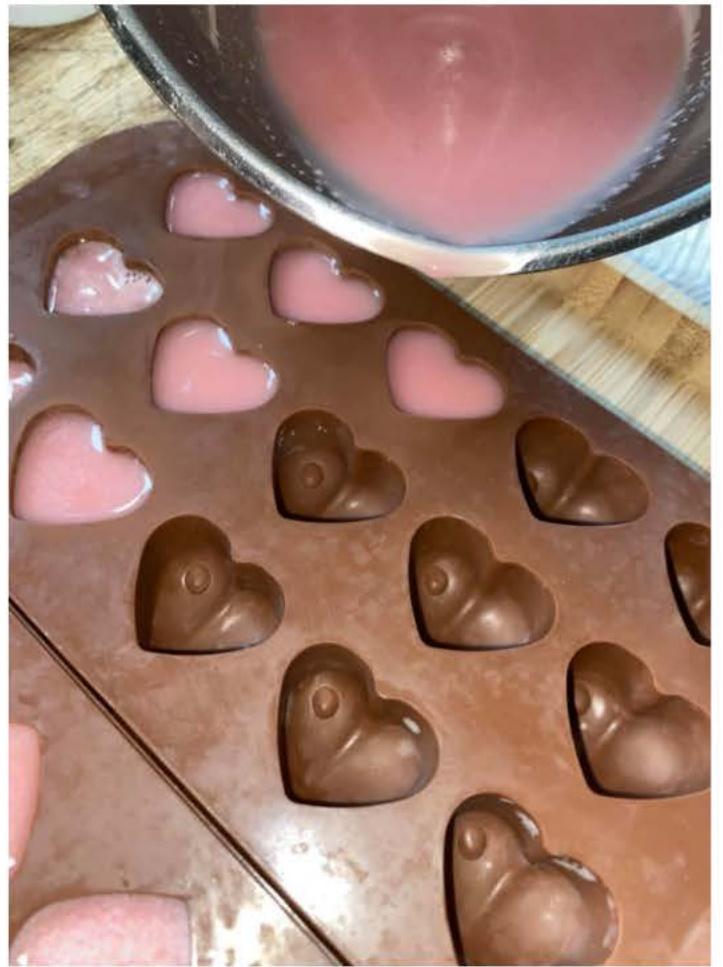














Heidelbeersenf
Aromatisch und scharf

Teigwaren mit Senf ist schon immer beliebt. Jetzt
Heidelbeersenf und das heutzutage nicht mehr
schmeckt süßlich, fruchtig und natürlich auch
das Fleisch gemischter Sausisener kühlt in Regenzeit
wirklich, geben Blut in den Senf mindestens 2 bis
3 Wochen vorher, bis er harmonischer im Geschmack
ist.

Heidelbeeren



Man benötigt:
 10 Stück Heidelbeeren
 10 Stück kleine halben Zitrus
 10 x 11 Frisch
 25 g Senfkörner
 100 g Zucker
 100 g Essig
 10 g Pfeffer Salz







































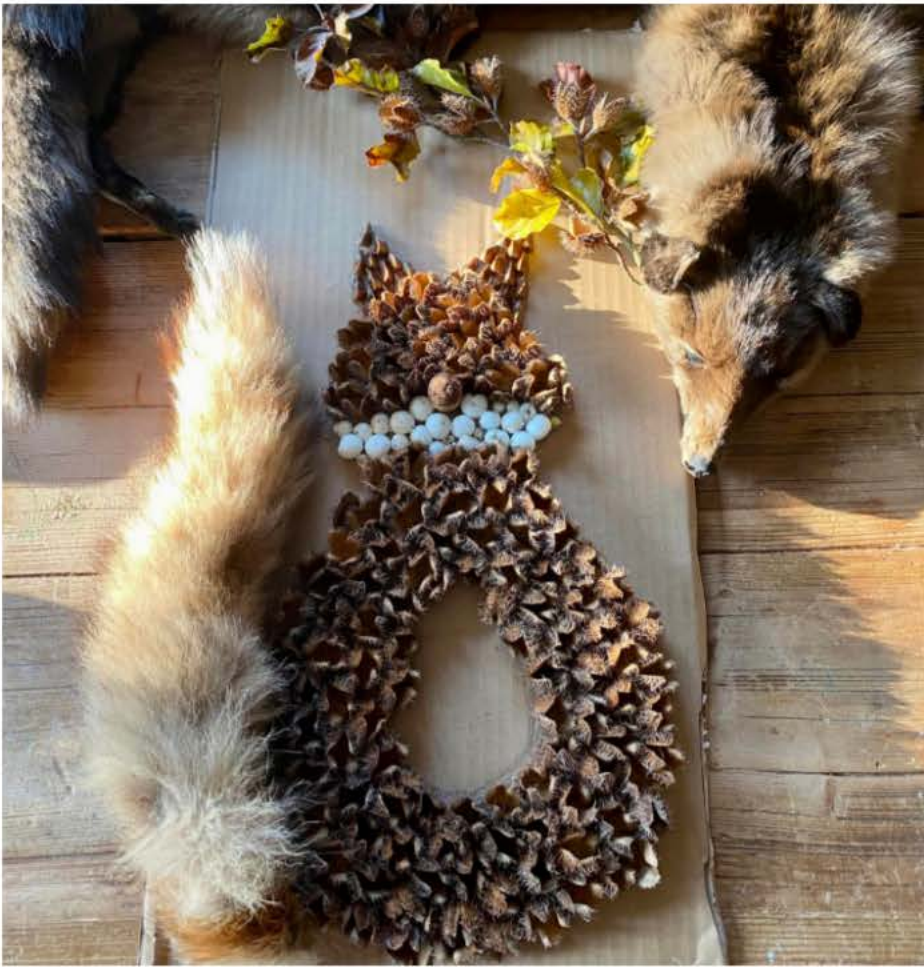




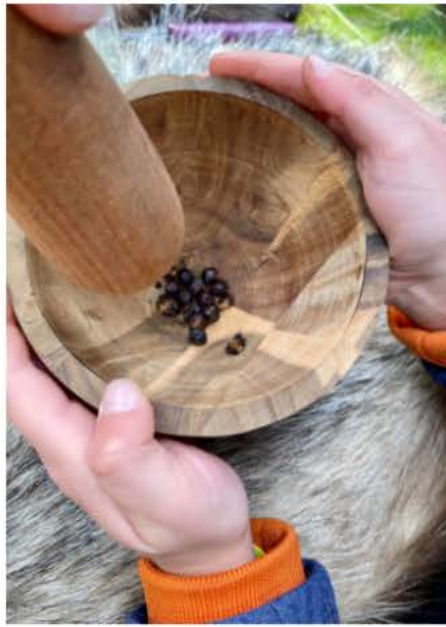






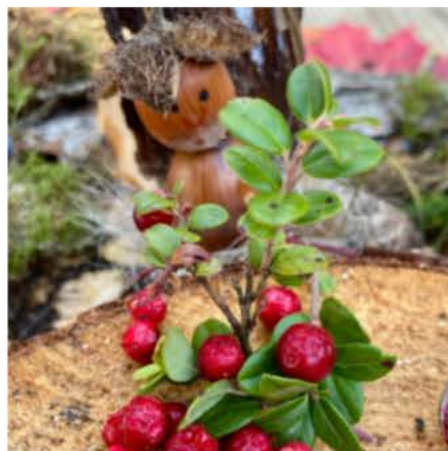






















































4 Löcher
hinten
Sie haben
das Rücken
marken
2 Löcher
vorne zum
hängen



