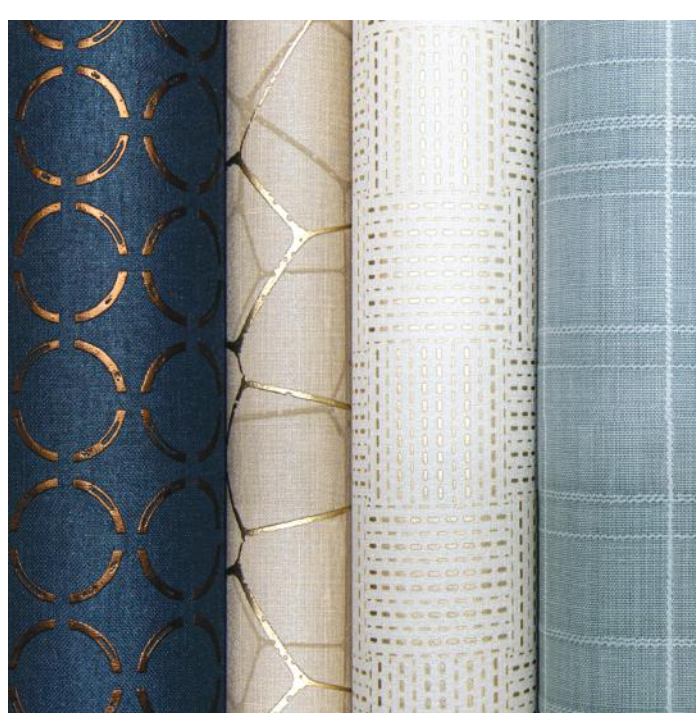


# tapetex

wall materials

68

linen



# Tessalin



68-1990



68-1991



68-1992



68-1993



68-1994



68-1995



68-1996



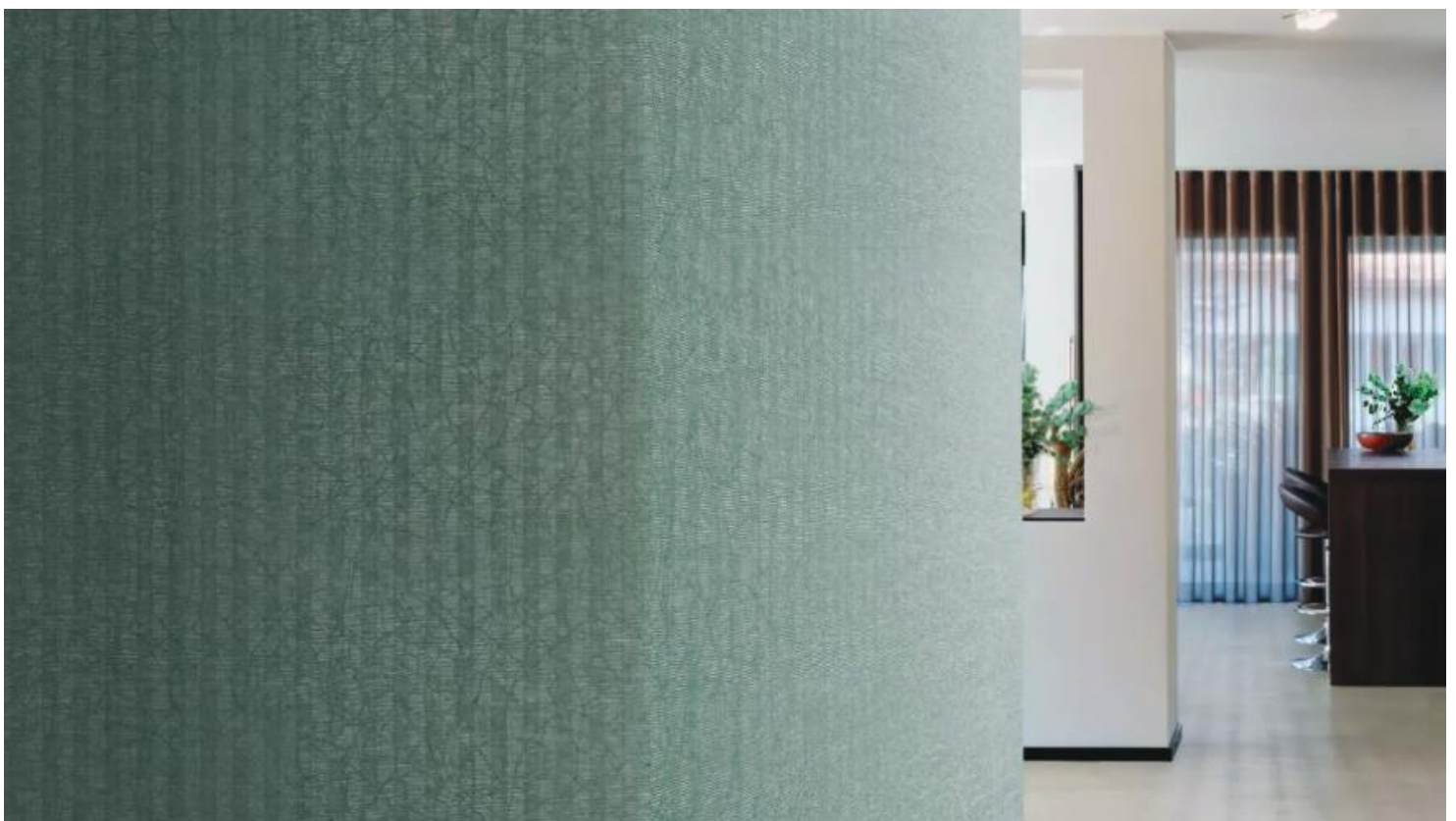
68-1997



68-1998



68-1999





**tapetex bv**  
Churchillaan 10, 5705 BK Helmond, The Netherlands  
(+31) 492 534690, info@tapetex.com, tapetex.com

**tapetex** wall materials



**SPECIFICATION** : **TESSALIN 68-1990/-1999**  
Collection : 10 colours from Tapetex 68-Linen

### **Physical properties**

---

Surface Composition : 75% Linen, 25% Polyester; jacquard woven and piece dyed.  
Backing : Paper backing of 70% woodpulp reinforced with 30% polyester.  
Width : 137 cm = 54"  
Weight : Approx. 540 gr/lm = 17.4 oz/lyd  
Thickness : Approx. 0.60 mm  
Hanging : Random.  
Precision trimmed for butt-joining by professional paper hangers.  
Installation advice supplied with every roll.  
Adhesive : Adhesive Tapetex PRO-1 or similar premixed heavy duty, clear vinyl adhesive, suitable for textile wallcovering.  
Variation : There can be a variation between sample material and finished product. Stock cuttings are available for approval.

**Performance** : See detailed results on our website.

---

Surface finish : A stain repellent finish prevents waterbased splashes penetrating and staining the material.  
Periodic vacuuming is recommended to prevent dust from building up on the materials surface.  
Lightfastness : Test result as per ISO 105-B02:2014, Heraeus original Hanau Xenotest.  
LRV values : Testing as per BS 8493:2008+A1:2010, Datacolor DC500.  
Fire rating : ASTM E84 Class 1 or A and EUROCLASS (B s2 d0).  
Permeability rating : Test result 49.4 as per ASTM E96-12, Method B, Water Vapor Transmission.  
Indoor air quality : ASTM D6196, D5197 and D5116, Environmental Chamber Test.  
The testing followed UL 2821 "Greenguard Certification Program Method for Measuring and Evaluating Chemical Emissions".  
REACH SVHC : Compliant as per Centexbel testing.  
DoP No. : (CPR 305/2011), DOP-CPR-01

### **Sustainability**

---

Linen is made from a plant, a 100% renewable natural resource.  
The backing is FSC certified, FSC A000531.  
In production, all energy sources are either green, wind or hydro based and all processes are waterbased. The products do not contain PVC, chlorine, plasticizers, heavy metals or harmful dyes.

### **Supply and packing**

---

Delivery from stock by the full linear meter or full linear yard. The average piece length of this quality is approx. 50 linear meter or 55 linear yards. However, as is common within the textile industry, it is not possible to establish a standard roll length. The wallcovering is reeled on to a cardboard core, wrapped in polyethylene and protective end caps are fixed. Each roll is then packed in individual cardboard boxes or tubes, which are also made out of FSC certified woodpulp.

### **Harmonized System as per the World Customs Organization and Origin**

---

Textile Wallcovering, paper backed: 5905.00. Made in the Netherlands.

# Eurolin



68-2000



68-2001



68-2002



68-2003



68-2004



68-2005



68-2006



68-2007



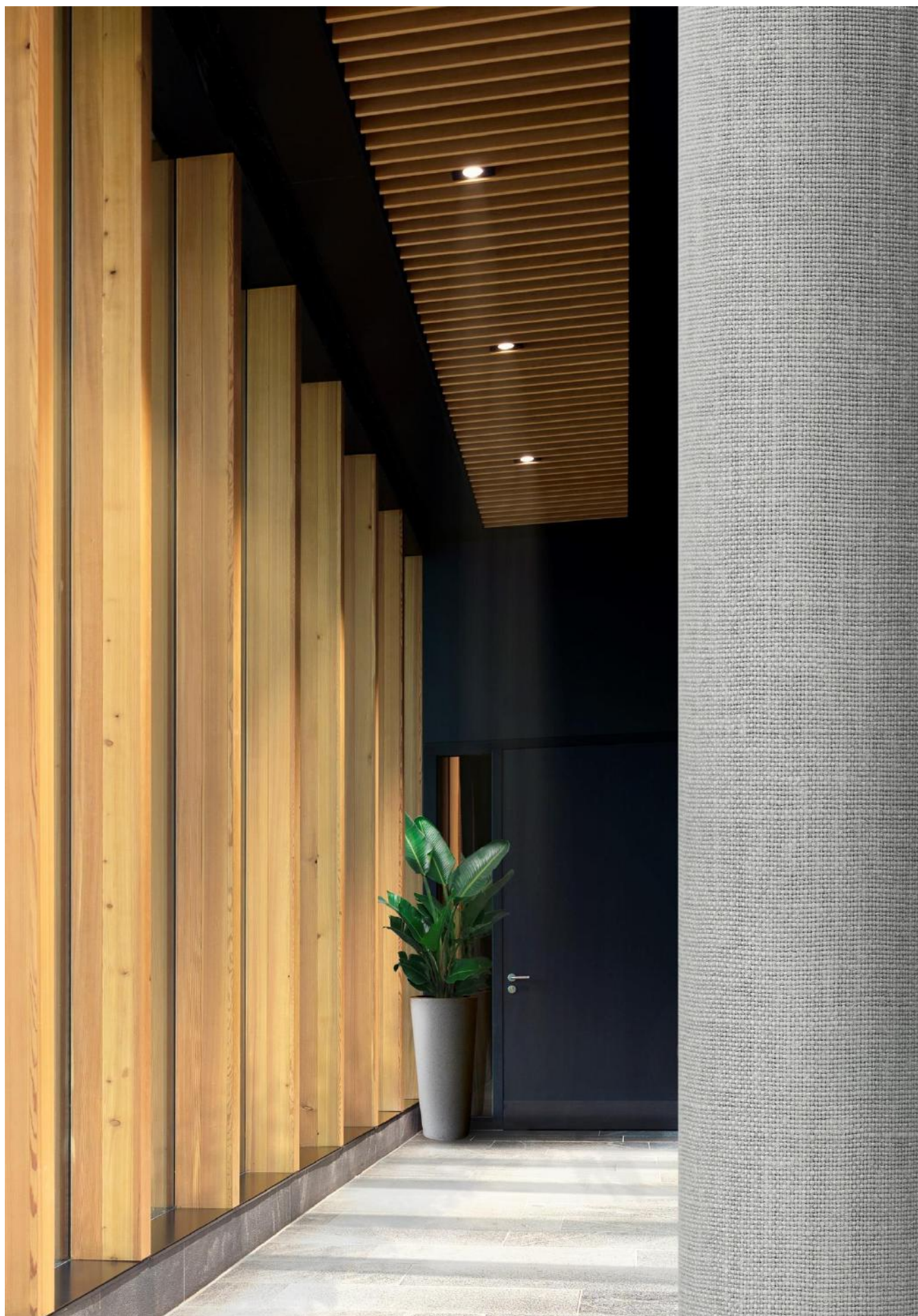
68-2008



68-2009

**tapetex bv**  
Churchillaan 10, 5705 BK Helmond, The Netherlands  
(+31) 492 534690, info@tapetex.com, tapetex.com

**tapetex** wall materials



**SPECIFICATION** : **EUROLIN 68-2000/-2009**  
Collection : 10 colours from Tapetex 68-Linen

### **Physical properties**

---

Surface Composition : 100% Linen, flat woven and piece dyed.  
Backing : Paper backing of 70% woodpulp reinforced with 30% polyester.  
Width : 137 cm = 54"  
Weight : Approx. 980 gr/lm = 31.6 oz/lyd  
Thickness : Approx. 0.90 mm  
Hanging : Random.  
Precision trimmed for butt-joining by professional paper hangers.  
Installation advice supplied with every roll.  
Adhesive : Adhesive Tapetex PRO-1 or similar premixed heavy duty, clear vinyl adhesive, suitable for textile wallcovering.  
Variation : There can be a variation between sample material and finished product. Stock cuttings are available for approval.

**Performance** : See detailed results on our website.

---

Surface finish : A stain repellent finish prevents waterbased splashes penetrating and staining the material.  
Periodic vacuuming is recommended to prevent dust from building up on the materials surface.  
Lightfastness : Test result as per ISO 105-B02:2014, Heraeus original Hanau Xenotest.  
LRV values : Testing as per BS 8493:2008+A1:2010, Datacolor DC500.  
Fire rating : ASTM E84 Class 1 or A and EUROCLASS (B s1 d0).  
Permeability rating : Test result 55.3 as per ASTM E96-12, Method B, Water Vapor Transmission.  
Indoor air quality : ASTM D6196, D5197 and D5116, Environmental Chamber Test.  
The testing followed UL 2821 "Greenguard Certification Program Method for Measuring and Evaluating Chemical Emissions".  
REACH SVHC : Compliant as per Centexbel testing.  
DoP No. : (CPR 305/2011), DOP-CPR-01

### **Sustainability**

---

Linen is made from a plant, a 100% renewable natural resource.  
The backing is FSC certified, FSC A000531.  
In production, all energy sources are either green, wind or hydro based and all processes are waterbased. The products do not contain PVC, chlorine, plasticizers, heavy metals or harmful dyes.

### **Supply and packing**

---

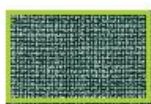
Delivery from stock by the full linear meter or full linear yard. The average piece length of this quality is approx. 30 linear meter or 33 linear yards. However, as is common within the textile industry, it is not possible to establish a standard roll length. The wallcovering is reeled on to a cardboard core, wrapped in polyethylene and protective end caps are fixed. Each roll is then packed in individual cardboard boxes or tubes, which are also made out of FSC certified woodpulp.

### **Harmonized System as per the World Customs Organization and Origin**

---

Textile Wallcovering, paper backed: 5905.00. Made in the Netherlands.

# Luxolin



68-2010



68-2011



68-2012



68-2013



68-2014



68-2015



68-2016



68-2017



68-2018



68-2019

tapetex bv  
Churchillaan 10, 5705 BK Helmond, The Netherlands  
(+31) 492 534690, info@tapetex.com, tapetex.com

tapetex wall materials



**SPECIFICATION** : **LUXOLIN 68-2010/-2019**  
Collection : 10 colours from Tapetex 68-Linen

### **Physical properties**

---

Surface Composition : 100% Linen, flat woven and piece dyed.  
Backing : Paper backing of 70% woodpulp reinforced with 30% polyester.  
Width : 137 cm = 54"  
Weight : Approx. 710 gr/lm = 22.9 oz/lyd  
Thickness : Approx. 0.70 mm  
Hanging : Random.  
Precision trimmed for butt-joining by professional paper hangers.  
Installation advice supplied with every roll.  
After hanging brush in one direction with a soft brush.  
Adhesive : Adhesive Tapetex PRO-1 or similar premixed heavy duty, clear vinyl adhesive, suitable for textile wallcovering.  
Variation : There can be a variation between sample material and finished product. Stock cuttings are available for approval.

**Performance** : See detailed results on our website.

---

Surface finish : A stain repellent finish prevents waterbased splashes penetrating and staining the material.  
Periodic vacuuming is recommended to prevent dust from building up on the materials surface.  
Lightfastness : Test result as per ISO 105-B02:2014, Heraeus original Hanau Xenotest.  
LRV values : Testing as per BS 8493:2008+A1:2010, Datacolor DC500.  
Fire rating : ASTM E84 Class 1 or A and EUROCLASS (B s1 d0).  
Permeability rating : Test result 55.3 as per ASTM E96-12, Method B, Water Vapor Transmission.  
Indoor air quality : ASTM D6196, D5197 and D5116, Environmental Chamber Test.  
The testing followed UL 2821 "Greenguard Certification Program Method for Measuring and Evaluating Chemical Emissions".  
REACH SVHC : Compliant as per Centexbel testing.  
DoP No. : (CPR 305/2011), DOP-CPR-01

### **Sustainability**

---

Linen is made from a plant, a 100% renewable natural resource.  
The backing is FSC certified, FSC A000531.  
In production, all energy sources are either green, wind or hydro based and all processes are waterbased. The products do not contain PVC, chlorine, plasticizers, heavy metals or harmful dyes.

### **Supply and packing**

---

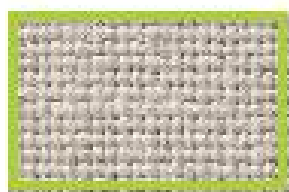
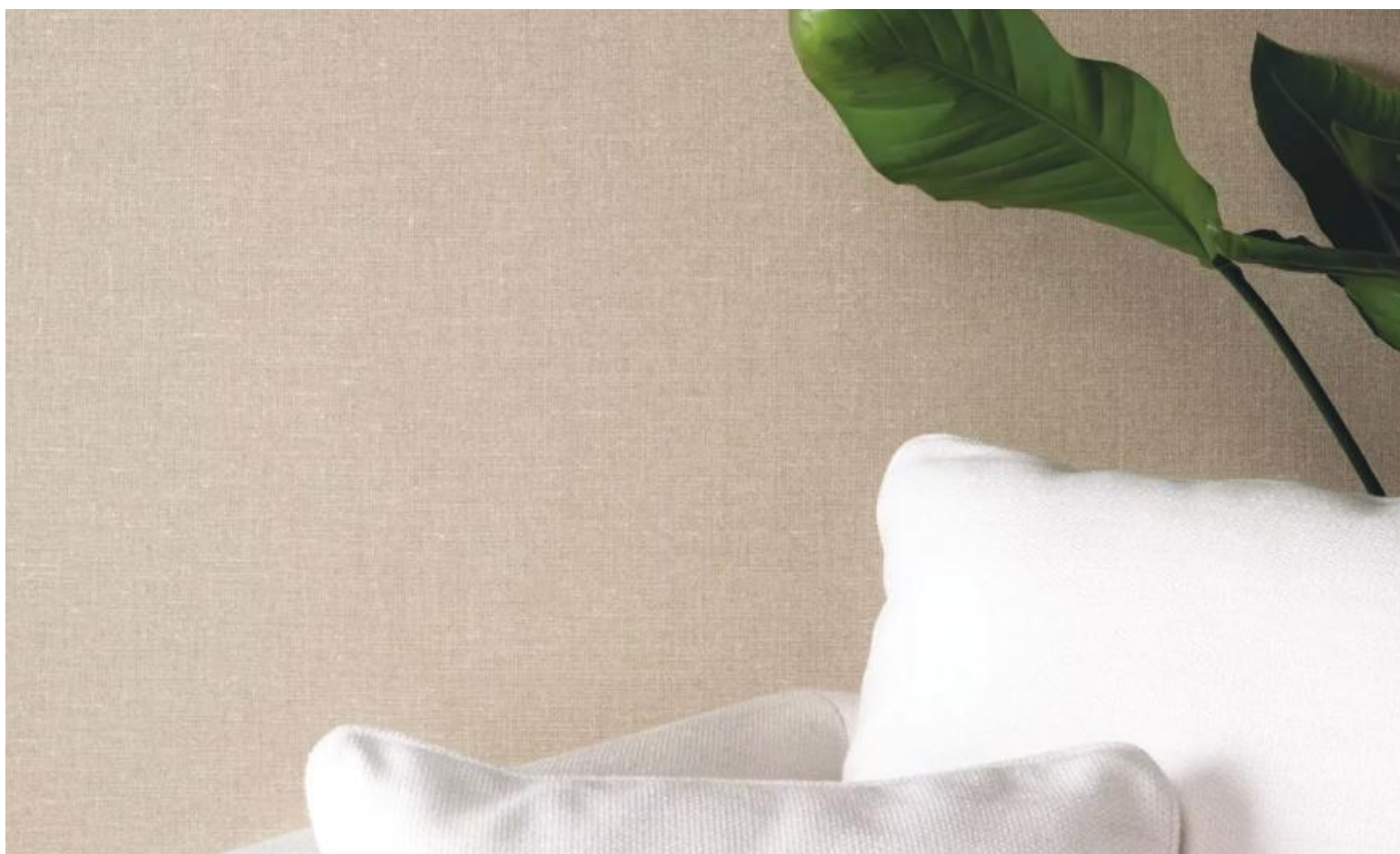
Delivery from stock by the full linear meter or full linear yard. The average piece length of this quality is approx. 40 linear meter or 44 linear yards. However, as is common within the textile industry, it is not possible to establish a standard roll length. The wallcovering is reeled on to a cardboard core, wrapped in polyethylene and protective end caps are fixed. Each roll is then packed in individual cardboard boxes or tubes, which are also made out of FSC certified woodpulp.

### **Harmonized System as per the World Customs Organization and Origin**

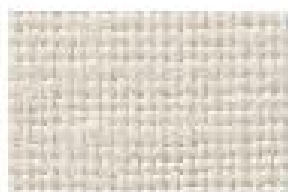
---

Textile Wallcovering, paper backed: 5905.00. Made in the Netherlands.

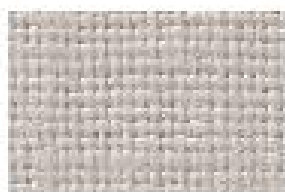
# Golden Flax



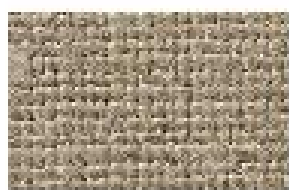
68-2020



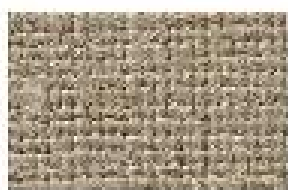
68-2021



68-2022



68-2023



68-2024

**tapetex bv**  
Churchillaan 10, 5705 BK Helmond, The Netherlands  
(+31) 492 534690, info@tapetex.com, tapetex.com

**tapetex** wall materials



**SPECIFICATION** : **GOLDEN FLAX 68-2020/-2024**  
Collection : 5 colours from Tapetex 68-Linen

### **Physical properties**

---

Surface Composition : 100% Linen, flat woven and piece dyed.  
Backing : Paper backing of 70% woodpulp reinforced with 30% polyester.  
Width : 137 cm = 54"  
Weight : Approx. 890 gr/lm = 28.7 oz/lyd  
Thickness : Approx. 0.90 mm  
Hanging : Random.  
Precision trimmed for butt-joining by professional paper hangers.  
Installation advice supplied with every roll.  
Adhesive : Adhesive Tapetex PRO-1 or similar premixed heavy duty, clear vinyl adhesive, suitable for textile wallcovering.  
Variation : There can be a variation between sample material and finished product. Stock cuttings are available for approval.

**Performance** : See detailed results on our website.

---

Surface finish : A stain repellent finish prevents waterbased splashes penetrating and staining the material.  
Periodic vacuuming is recommended to prevent dust from building up on the materials surface.  
Lightfastness : Test result as per ISO 105-B02:2014, Heraeus original Hanau Xenotest.  
LRV values : Testing as per BS 8493:2008+A1:2010, Datacolor DC500.  
Fire rating : ASTM E84 Class 1 or A and EUROCLASS (B s1 d0).  
Permeability rating : Test result 55.3 as per ASTM E96-12, Method B, Water Vapor Transmission.  
Indoor air quality : ASTM D6196, D5197 and D5116, Environmental Chamber Test.  
The testing followed UL 2821 "Greenguard Certification Program Method for Measuring and Evaluating Chemical Emissions".  
REACH SVHC : Compliant as per Centexbel testing.  
DoP No. : (CPR 305/2011), DOP-CPR-01

### **Sustainability**

---

Linen is made from a plant, a 100% renewable natural resource.  
The backing is FSC certified, FSC A000531.  
In production, all energy sources are either green, wind or hydro based and all processes are waterbased. The products do not contain PVC, chlorine, plasticizers, heavy metals or harmful dyes.

### **Supply and packing**

---

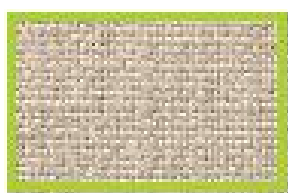
Delivery from stock by the full linear meter or full linear yard. The average piece length of this quality is approx. 30 linear meter or 33 linear yards. However, as is common within the textile industry, it is not possible to establish a standard roll length. The wallcovering is reeled on to a cardboard core, wrapped in polyethylene and protective end caps are fixed. Each roll is then packed in individual cardboard boxes or tubes, which are also made out of FSC certified woodpulp.

### **Harmonized System as per the World Customs Organization and Origin**

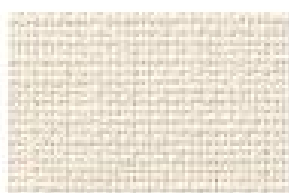
---

Textile Wallcovering, paper backed: 5905.00. Made in the Netherlands.

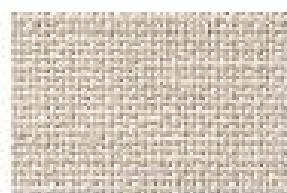
# Linum



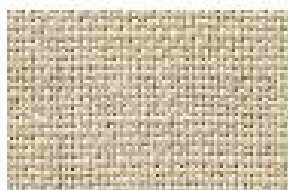
68-2030



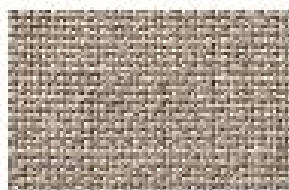
68-2031



68-2032



68-2033



68-2034

**tapetex bv**  
Churchillaan 10, 5705 BK Helmond, The Netherlands  
(+31) 492 534690, info@tapetex.com, tapetex.com

**tapetex** wall materials



**SPECIFICATION** : **LINUM 68-2030/-2034**  
Collection : 5 colours from Tapetex 68-Linen

### **Physical properties**

---

Surface Composition : 100% Linen, flat woven and piece dyed.  
Backing : Paper backing of 70% woodpulp reinforced with 30% polyester.  
Width : 137 cm = 54"  
Weight : Approx. 660 gr/lm = 21.3 oz/lyd  
Thickness : Approx. 0.70 mm  
Hanging : Random.  
Precision trimmed for butt-joining by professional paper hangers.  
Installation advice supplied with every roll.  
Adhesive : Adhesive Tapetex PRO-1 or similar premixed heavy duty, clear vinyl adhesive, suitable for textile wallcovering.  
Variation : There can be a variation between sample material and finished product. Stock cuttings are available for approval.

**Performance** : See detailed results on our website.

---

Surface finish : A stain repellent finish prevents waterbased splashes penetrating and staining the material.  
Periodic vacuuming is recommended to prevent dust from building up on the materials surface.  
Lightfastness : Test result as per ISO 105-B02:2014, Heraeus original Hanau Xenotest.  
LRV values : Testing as per BS 8493:2008+A1:2010, Datacolor DC500.  
Fire rating : ASTM E84 Class 1 or A and EUROCLASS (B s1 d0).  
Permeability rating : Test result 55.3 as per ASTM E96-12, Method B, Water Vapor Transmission.  
Indoor air quality : ASTM D6196, D5197 and D5116, Environmental Chamber Test.  
The testing followed UL 2821 "Greenguard Certification Program Method for Measuring and Evaluating Chemical Emissions".  
REACH SVHC : Compliant as per Centexbel testing.  
DoP No. : (CPR 305/2011), DOP-CPR-01

### **Sustainability**

---

Linen is made from a plant, a 100% renewable natural resource.  
The backing is FSC certified, FSC A000531.  
In production, all energy sources are either green, wind or hydro based and all processes are waterbased. The products do not contain PVC, chlorine, plasticizers, heavy metals or harmful dyes.

### **Supply and packing**

---

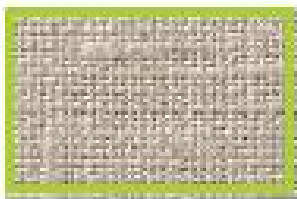
Delivery from stock by the full linear meter or full linear yard. The average piece length of this quality is approx. 40 linear meter or 44 linear yards. However, as is common within the textile industry, it is not possible to establish a standard roll length. The wallcovering is reeled on to a cardboard core, wrapped in polyethylene and protective end caps are fixed. Each roll is then packed in individual cardboard boxes or tubes, which are also made out of FSC certified woodpulp.

### **Harmonized System as per the World Customs Organization and Origin**

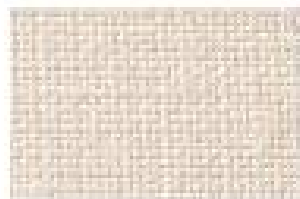
---

Textile Wallcovering, paper backed: 5905.00. Made in the Netherlands.

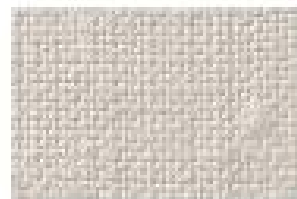
# Irish Heritage



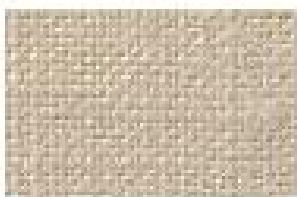
68-2040



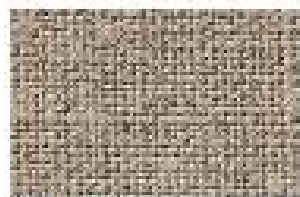
68-2041



68-2042



68-2043



68-2044



**SPECIFICATION** : **IRISH HERITAGE 68-2040/-2044**  
Collection : 5 colours from Tapetex 68-Linen

### **Physical properties**

---

Surface Composition : 100% Linen, flat woven and piece dyed.  
Backing : Paper backing of 70% woodpulp reinforced with 30% polyester.  
Width : 137 cm = 54"  
Weight : Approx. 690 gr/lm = 22.3 oz/lyd  
Thickness : Approx. 0.70 mm  
Hanging : Random.  
Precision trimmed for butt-joining by professional paper hangers.  
Installation advice supplied with every roll.  
Adhesive : Adhesive Tapetex PRO-1 or similar premixed heavy duty, clear vinyl adhesive, suitable for textile wallcovering.  
Variation : There can be a variation between sample material and finished product. Stock cuttings are available for approval.

**Performance** : See detailed results on our website.

---

Surface finish : A stain repellent finish prevents waterbased splashes penetrating and staining the material.  
Periodic vacuuming is recommended to prevent dust from building up on the materials surface.  
Lightfastness : Test result as per ISO 105-B02:2014, Heraeus original Hanau Xenotest.  
LRV values : Testing as per BS 8493:2008+A1:2010, Datacolor DC500.  
Fire rating : ASTM E84 Class 1 or A and EUROCLASS (B s1 d0).  
Permeability rating : Test result 55.3 as per ASTM E96-12, Method B, Water Vapor Transmission.  
Indoor air quality : ASTM D6196, D5197 and D5116, Environmental Chamber Test.  
The testing followed UL 2821 "Greenguard Certification Program Method for Measuring and Evaluating Chemical Emissions".  
REACH SVHC : Compliant as per Centexbel testing.  
DoP No. : (CPR 305/2011), DOP-CPR-01

### **Sustainability**

---

Linen is made from a plant, a 100% renewable natural resource.  
The backing is FSC certified, FSC A000531.  
In production, all energy sources are either green, wind or hydro based and all processes are waterbased. The products do not contain PVC, chlorine, plasticizers, heavy metals or harmful dyes.

### **Supply and packing**

---

Delivery from stock by the full linear meter or full linear yard. The average piece length of this quality is approx. 40 linear meter or 44 linear yards. However, as is common within the textile industry, it is not possible to establish a standard roll length. The wallcovering is reeled on to a cardboard core, wrapped in polyethylene and protective end caps are fixed. Each roll is then packed in individual cardboard boxes or tubes, which are also made out of FSC certified woodpulp.

### **Harmonized System as per the World Customs Organization and Origin**

---

Textile Wallcovering, paper backed: 5905.00. Made in the Netherlands.

**SPECIFICATION** : **CASALIN 68-2050/-2059**  
Collection : 10 colours from Tapetex 68-Linen

### **Physical properties**

---

Surface Composition : 60% Linen, 21% Cotton and 19% Polyester; flat woven and yarn dyed.  
Backing : Paper backing of 70% woodpulp reinforced with 30% polyester.  
Width : 137 cm = 54"  
Weight : Approx. 610 gr/lm = 19.7 oz/lyd  
Thickness : Approx. 0.70 mm  
Hanging : Random.  
Precision trimmed for butt-joining by professional paper hangers.  
Installation advice supplied with every roll.  
Direction of hanging printed on backing.  
Adhesive : Adhesive Tapetex PRO-1 or similar premixed heavy duty, clear vinyl adhesive, suitable for textile wallcovering.  
Variation : There can be a variation between sample material and finished product.  
Stock cuttings are available for approval.

**Performance** : See detailed results on our website.

---

Surface finish : A stain repellent finish prevents waterbased splashes penetrating and staining the material.  
Periodic vacuuming is recommended to prevent dust from building up on the materials surface.  
Lightfastness : Test result as per ISO 105-B02:2014, Heraeus original Hanau Xenotest.  
LRV values : Testing as per BS 8493:2008+A1:2010, Datacolor DC500.  
Fire rating : ASTM E84 Class 1 or A and EUROCLASS (B s2 d0).  
Permeability rating : Test result 49.4 as per ASTM E96-12, Method B, Water Vapor Transmission.  
Indoor air quality : ASTM D6196, D5197 and D5116, Environmental Chamber Test.  
The testing followed UL 2821 "Greenguard Certification Program Method for Measuring and Evaluating Chemical Emissions".  
REACH SVHC : Compliant as per Centexbel testing.  
DoP No. : (CPR 305/2011), DOP-CPR-01

### **Sustainability**

---

Linen is made from a plant, a 100% renewable natural resource.  
The backing is FSC certified, FSC A000531.  
In production, all energy sources are either green, wind or hydro based and all processes are waterbased. The products do not contain PVC, chlorine, plasticizers, heavy metals or harmful dyes.

### **Supply and packing**

---

Delivery from stock by the full linear meter or full linear yard. The average piece length of this quality is approx. 40 linear meter or 44 linear yards. However, as is common within the textile industry, it is not possible to establish a standard roll length. The wallcovering is reeled on to a cardboard core, wrapped in polyethylene and protective end caps are fixed. Each roll is then packed in individual cardboard boxes or tubes, which are also made out of FSC certified woodpulp.

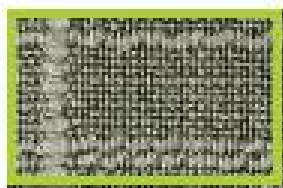
### **Harmonized System as per the World Customs Organization and Origin**

---

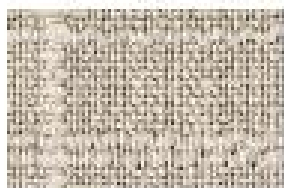
Textile Wallcovering, paper backed: 5905.00. Made in the Netherlands.



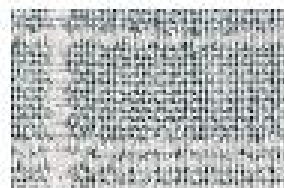
# Puralin



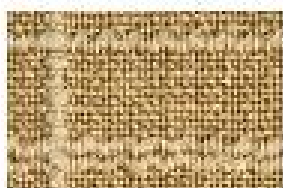
68-2060



68-2061



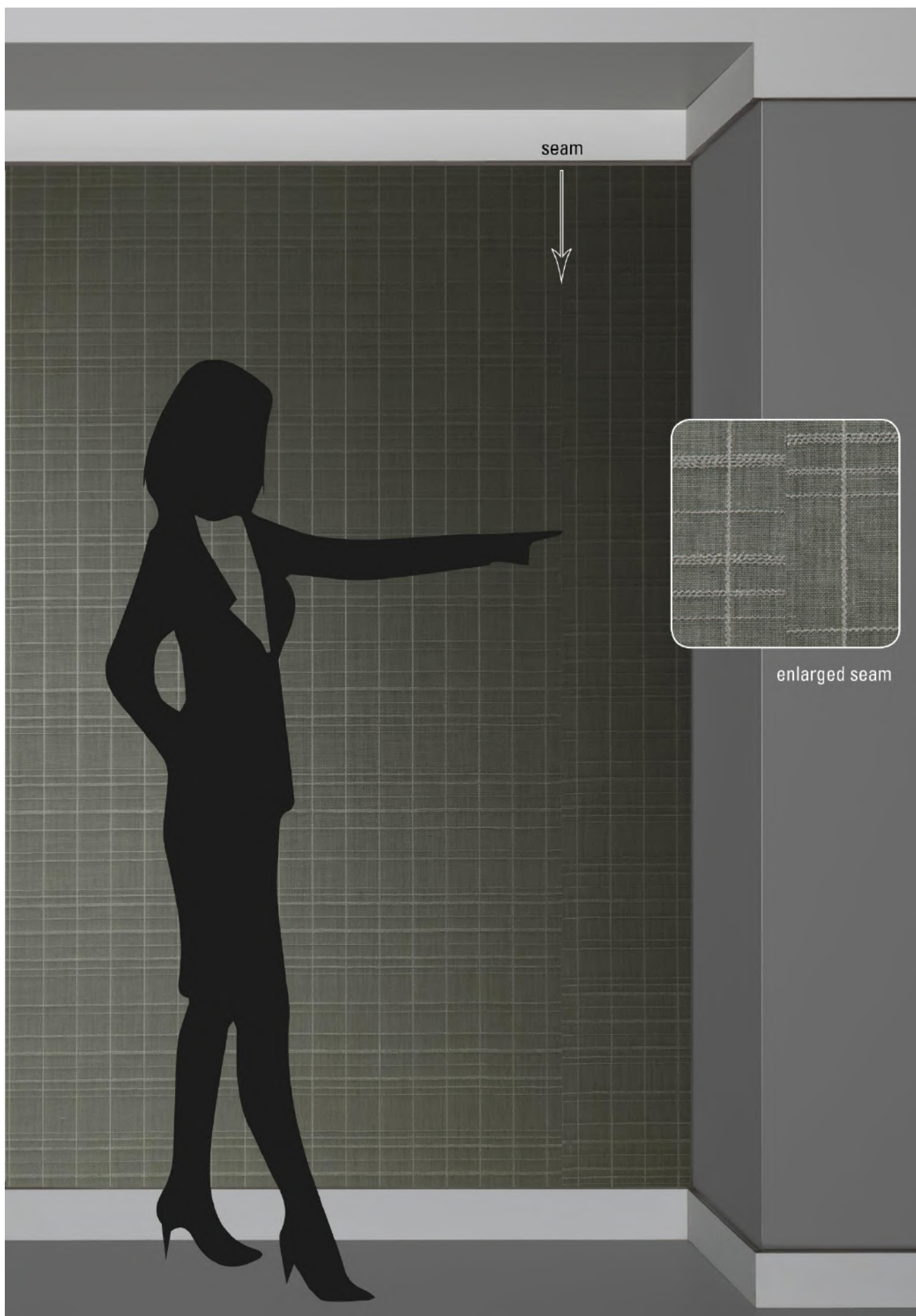
68-2062

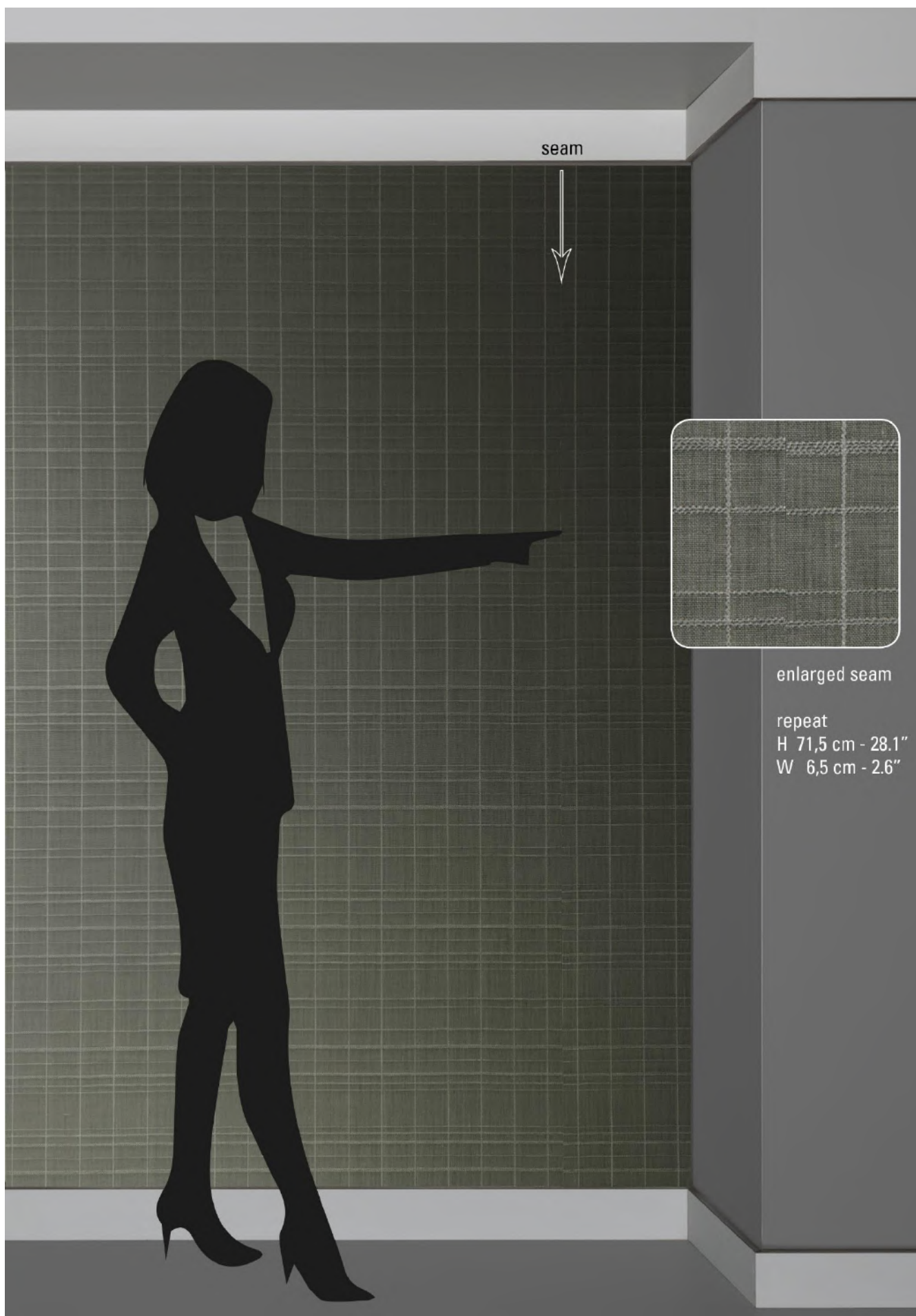


68-2063



68-2064





seam



enlarged seam

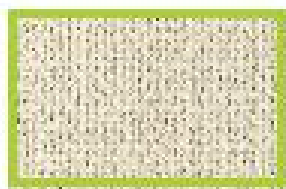
repeat  
H 71,5 cm - 28.1"  
W 6,5 cm - 2.6"

**tapetex bv**  
Churchillaan 10, 5705 BK Helmond, The Netherlands  
(+31) 492 534690, info@tapetex.com, tapetex.com

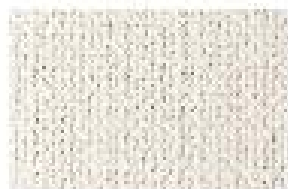
**tapetex** wall materials



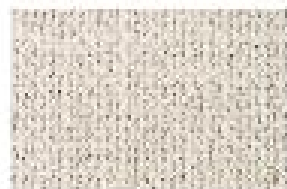
# Ethnic Lino



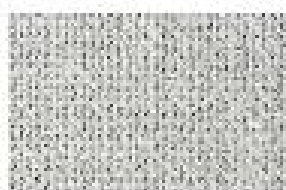
68-2070



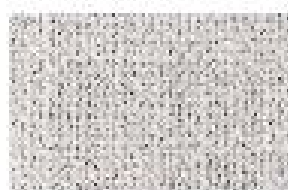
68-2071



68-2072



68-2073



68-2074

**tapetex bv**  
Churchillaan 10, 5705 BK Helmond, The Netherlands  
(+31) 492 534690, info@tapetex.com, tapetex.com

**tapetex** wall materials



**SPECIFICATION** : **ETHNIC LINO 68-2070/-2074**  
Collection : 5 colours from Tapetex 68-Linen

### **Physical properties**

---

Surface Composition : 52% Linen, 38% Viscose and 10% Polyester; flat woven and piece dyed.  
Backing : Paper backing of 70% woodpulp reinforced with 30% polyester.  
Width : 137 cm = 54"  
Weight : Approx. 770 gr/lm = 24.8 oz/lyd  
Thickness : Approx. 1.00 mm  
Hanging : Random.  
Precision trimmed for butt-joining by professional paper hangers.  
Installation advice supplied with every roll.  
Adhesive : Adhesive Tapetex PRO-1 or similar premixed heavy duty, clear vinyl adhesive, suitable for textile wallcovering.  
Variation : There can be a variation between sample material and finished product. Stock cuttings are available for approval.

**Performance** : See detailed results on our website.

---

Surface finish : A stain repellent finish prevents waterbased splashes penetrating and staining the material.  
Periodic vacuuming is recommended to prevent dust from building up on the materials surface.  
Lightfastness : Test result as per ISO 105-B02:2014, Heraeus original Hanau Xenotest.  
LRV values : Testing as per BS 8493:2008+A1:2010, Datacolor DC500.  
Fire rating : ASTM E84 Class 1 or A and EUROCLASS (B s2 d0).  
Permeability rating : Test result 49.4 as per ASTM E96-12, Method B, Water Vapor Transmission.  
Indoor air quality : ASTM D6196, D5197 and D5116, Environmental Chamber Test.  
The testing followed UL 2821 "Greenguard Certification Program Method for Measuring and Evaluating Chemical Emissions".  
REACH SVHC : Compliant as per Centexbel testing.  
DoP No. : (CPR 305/2011), DOP-CPR-01

### **Sustainability**

---

Linen is made from a plant, a 100% renewable natural resource.  
The backing is FSC certified, FSC A000531.  
In production, all energy sources are either green, wind or hydro based and all processes are waterbased. The products do not contain PVC, chlorine, plasticizers, heavy metals or harmful dyes.

### **Supply and packing**

---

Delivery from stock by the full linear meter or full linear yard. The average piece length of this quality is approx. 30 linear meter or 33 linear yards. However, as is common within the textile industry, it is not possible to establish a standard roll length. The wallcovering is reeled on to a cardboard core, wrapped in polyethylene and protective end caps are fixed. Each roll is then packed in individual cardboard boxes or tubes, which are also made out of FSC certified woodpulp.

### **Harmonized System as per the World Customs Organization and Origin**

---

Textile Wallcovering, paper backed: 5905.00. Made in the Netherlands.

**SPECIFICATION** : **KENZOLIN 68-2080**  
Collection : 1 colour from Tapetex 68-Linen

### **Physical properties**

---

Surface Composition : 100% Linen, dobby woven and piece dyed.  
Backing : Paper backing of 70% woodpulp reinforced with 30% polyester.  
Width : 137 cm = 54"  
Weight : Approx. 340 gr/lm = 11.0 oz/lyd  
Thickness : Approx. 0.50 mm  
Hanging : Random or on approx. repeat.  
Align at eye-level if there are minor deviations in the joining of the fabric.  
Precision trimmed for butt-joining by professional paper hangers.  
Installation advice supplied with every roll.  
Adhesive : Adhesive Tapetex PRO-1 or similar premixed heavy duty, clear vinyl adhesive, suitable for textile wallcovering.  
Variation : There can be a variation between sample material and finished product.  
Stock cuttings are available for approval.

**Performance** : See detailed results on our website.

---

Surface finish : A stain repellent finish prevents waterbased splashes penetrating and staining the material.  
Periodic vacuuming is recommended to prevent dust from building up on the materials surface.  
Lightfastness : Test result as per ISO 105-B02:2014, Heraeus original Hanau Xenotest.  
LRV values : Testing as per BS 8493:2008+A1:2010, Datacolor DC500.  
Fire rating : ASTM E84 Class 1 or A and EUROCLASS (B s1 d0).  
Permeability rating : Test result 55.3 as per ASTM E96-12, Method B, Water Vapor Transmission.  
Indoor air quality : ASTM D6196, D5197 and D5116, Environmental Chamber Test.  
The testing followed UL 2821 "Greenguard Certification Program Method for Measuring and Evaluating Chemical Emissions".  
REACH SVHC : Compliant as per Centexbel testing.  
DoP No. : (CPR 305/2011), DOP-CPR-01

### **Sustainability**

---

Linen is made from a plant, a 100% renewable natural resource.  
The backing is FSC certified, FSC A000531.  
In production, all energy sources are either green, wind or hydro based and all processes are waterbased. The products do not contain PVC, chlorine, plasticizers, heavy metals or harmful dyes.

### **Supply and packing**

---

Delivery from stock by the full linear meter or full linear yard. The average piece length of this quality is approx. 50 linear meter or 55 linear yards. However, as is common within the textile industry, it is not possible to establish a standard roll length. The wallcovering is reeled on to a cardboard core, wrapped in polyethylene and protective end caps are fixed. Each roll is then packed in individual cardboard boxes or tubes, which are also made out of FSC certified woodpulp.

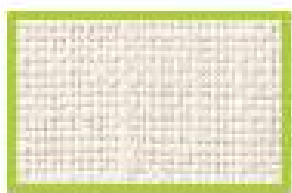
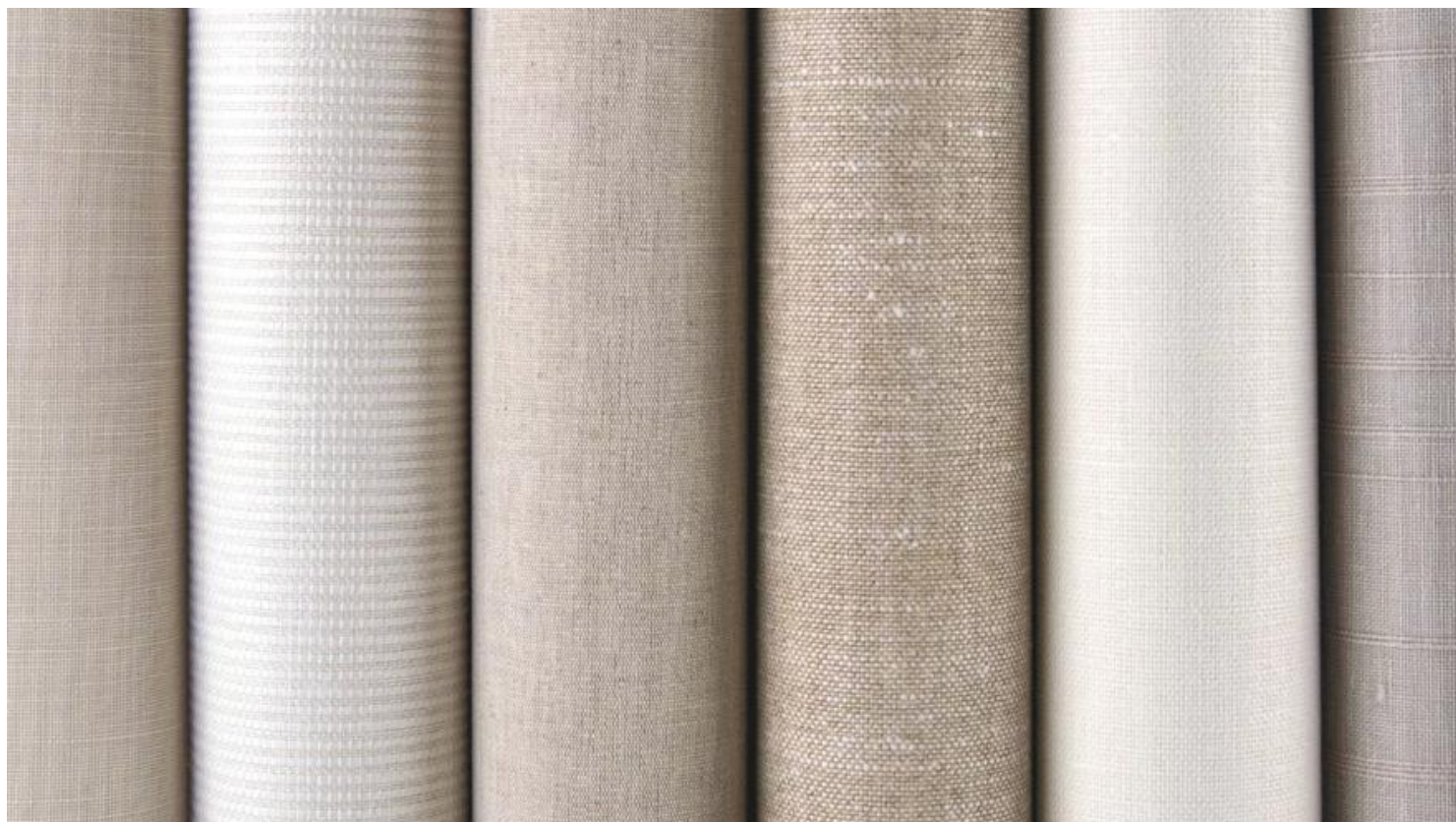
### **Harmonized System as per the World Customs Organization and Origin**

---

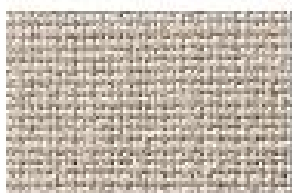
Textile Wallcovering, paper backed: 5905.00. Made in the Netherlands.

# Espalin

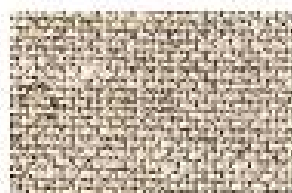
"Linen Naturals"



68-2081



68-2082



68-2083



**SPECIFICATION** : **ESPALIN 68-2081/-2083**  
Collection : 3 colours from Tapetex 68-Linen

### **Physical properties**

---

Surface Composition : 100% Linen, flat woven and piece dyed.  
Backing : Paper backing of 70% woodpulp reinforced with 30% polyester.  
Width : 137 cm = 54"  
Weight : Approx. 710 gr/lm = 22.9 oz/lyd  
Thickness : Approx. 0.70 mm  
Hanging : Random.  
Precision trimmed for butt-joining by professional paper hangers.  
Installation advice supplied with every roll.  
Adhesive : Adhesive Tapetex PRO-1 or similar premixed heavy duty, clear vinyl adhesive, suitable for textile wallcovering.  
Variation : There can be a variation between sample material and finished product. Stock cuttings are available for approval.

**Performance** : See detailed results on our website.

---

Surface finish : A stain repellent finish prevents waterbased splashes penetrating and staining the material.  
Periodic vacuuming is recommended to prevent dust from building up on the materials surface.  
Lightfastness : Test result as per ISO 105-B02:2014, Heraeus original Hanau Xenotest.  
LRV values : Testing as per BS 8493:2008+A1:2010, Datacolor DC500.  
Fire rating : ASTM E84 Class 1 or A and EUROCLASS (B s1 d0).  
Permeability rating : Test result 55.3 as per ASTM E96-12, Method B, Water Vapor Transmission.  
Indoor air quality : ASTM D6196, D5197 and D5116, Environmental Chamber Test.  
The testing followed UL 2821 "Greenguard Certification Program Method for Measuring and Evaluating Chemical Emissions".  
REACH SVHC : Compliant as per Centexbel testing.  
DoP No. : (CPR 305/2011), DOP-CPR-01

### **Sustainability**

---

Linen is made from a plant, a 100% renewable natural resource.  
The backing is FSC certified, FSC A000531.  
In production, all energy sources are either green, wind or hydro based and all processes are waterbased. The products do not contain PVC, chlorine, plasticizers, heavy metals or harmful dyes.

### **Supply and packing**

---

Delivery from stock by the full linear meter or full linear yard. The average piece length of this quality is approx. 40 linear meter or 44 linear yards. However, as is common within the textile industry, it is not possible to establish a standard roll length. The wallcovering is reeled on to a cardboard core, wrapped in polyethylene and protective end caps are fixed. Each roll is then packed in individual cardboard boxes or tubes, which are also made out of FSC certified woodpulp.

### **Harmonized System as per the World Customs Organization and Origin**

---

Textile Wallcovering, paper backed: 5905.00. Made in the Netherlands.

**SPECIFICATION** : **ARCHILIN 68-2084/-2085**  
Collection : 2 colours from Tapetex 68-Linen

### **Physical properties**

---

Surface Composition : 100% Linen, flat woven and yarn dyed.  
Backing : Paper backing of 70% woodpulp reinforced with 30% polyester.  
Width : 137 cm = 54"  
Weight : Approx. 710 gr/lm = 22.9 oz/lyd  
Thickness : Approx. 0.70 mm  
Hanging : Random.  
Precision trimmed for butt-joining by professional paper hangers.  
Installation advice supplied with every roll.  
Use a rubber roller instead of a spatula.  
Adhesive : Adhesive Tapetex PRO-1 or similar premixed heavy duty, clear vinyl adhesive, suitable for textile wallcovering.  
Variation : There can be a variation between sample material and finished product. Stock cuttings are available for approval.

**Performance** : See detailed results on our website.

---

Surface finish : A stain repellent finish prevents waterbased splashes penetrating and staining the material.  
Periodic vacuuming is recommended to prevent dust from building up on the materials surface.  
Lightfastness : Test result as per ISO 105-B02:2014, Heraeus original Hanau Xenotest.  
LRV values : Testing as per BS 8493:2008+A1:2010, Datacolor DC500.  
Fire rating : ASTM E84 Class 1 or A and EUROCLASS (B s1 d0).  
Permeability rating : Test result 55.3 as per ASTM E96-12, Method B, Water Vapor Transmission.  
Indoor air quality : ASTM D6196, D5197 and D5116, Environmental Chamber Test.  
The testing followed UL 2821 "Greenguard Certification Program Method for Measuring and Evaluating Chemical Emissions".  
REACH SVHC : Compliant as per Centexbel testing.  
DoP No. : (CPR 305/2011), DOP-CPR-01

### **Sustainability**

---

Linen is made from a plant, a 100% renewable natural resource.  
The backing is FSC certified, FSC A000531.  
In production, all energy sources are either green, wind or hydro based and all processes are waterbased. The products do not contain PVC, chlorine, plasticizers, heavy metals or harmful dyes.

### **Supply and packing**

---

Delivery from stock by the full linear meter or full linear yard. The average piece length of this quality is approx. 40 linear meter or 44 linear yards. However, as is common within the textile industry, it is not possible to establish a standard roll length. The wallcovering is reeled on to a cardboard core, wrapped in polyethylene and protective end caps are fixed. Each roll is then packed in individual cardboard boxes or tubes, which are also made out of FSC certified woodpulp.

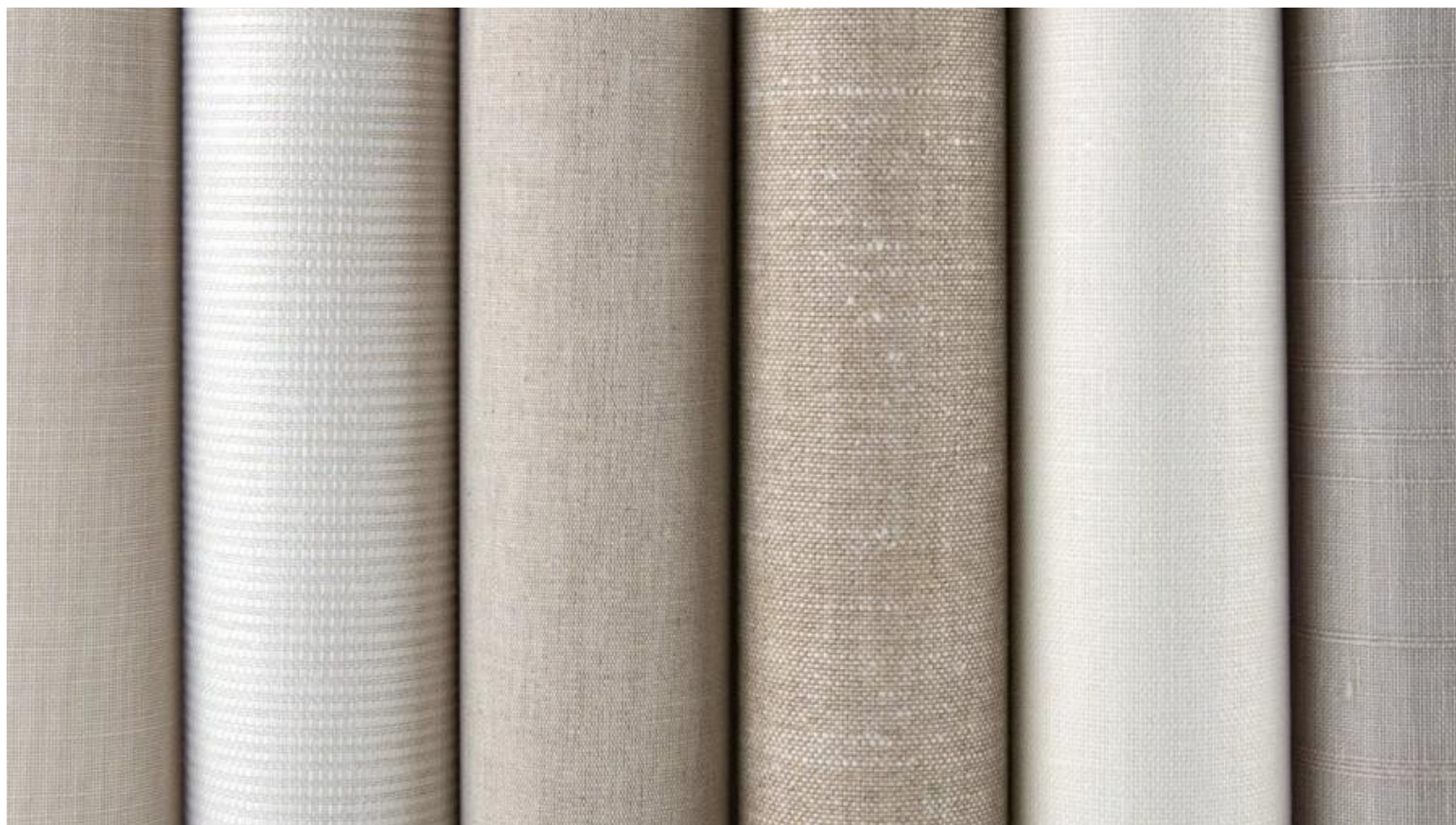
### **Harmonized System as per the World Customs Organization and Origin**

---

Textile Wallcovering, paper backed: 5905.00. Made in the Netherlands.

# Spica

"Linen Naturals"



68-2086

**SPECIFICATION** : **SPICA 68-2086**  
Collection : 1 colour from Tapetex 68-Linen

### **Physical properties**

---

Surface Composition : 65% Linen, 35% Cotton; flat woven and piece dyed.  
Backing : Paper backing of 70% woodpulp reinforced with 30% polyester.  
Width : 137 cm = 54"  
Weight : Approx. 560 gr/lm = 18.0 oz/lyd  
Thickness : Approx. 0.60 mm  
Hanging : Random.  
Precision trimmed for butt-joining by professional paper hangers.  
Installation advice supplied with every roll.  
Adhesive : Adhesive Tapetex PRO-1 or similar premixed heavy duty, clear vinyl adhesive, suitable for textile wallcovering.  
Variation : There can be a variation between sample material and finished product. Stock cuttings are available for approval.

**Performance** : See detailed results on our website.

---

Surface finish : A stain repellent finish prevents waterbased splashes penetrating and staining the material.  
Periodic vacuuming is recommended to prevent dust from building up on the materials surface.  
Lightfastness : Test result as per ISO 105-B02:2014, Heraeus original Hanau Xenotest.  
LRV values : Testing as per BS 8493:2008+A1:2010, Datacolor DC500.  
Fire rating : ASTM E84 Class 1 or A and EUROCLASS (B s1 d0).  
Permeability rating : Test result 55.3 as per ASTM E96-12, Method B, Water Vapor Transmission.  
Indoor air quality : ASTM D6196, D5197 and D5116, Environmental Chamber Test.  
The testing followed UL 2821 "Greenguard Certification Program Method for Measuring and Evaluating Chemical Emissions".  
REACH SVHC : Compliant as per Centexbel testing.  
DoP No. : (CPR 305/2011), DOP-CPR-01

### **Sustainability**

---

Linen is made from a plant, a 100% renewable natural resource.  
The backing is FSC certified, FSC A000531.  
In production, all energy sources are either green, wind or hydro based and all processes are waterbased. The products do not contain PVC, chlorine, plasticizers, heavy metals or harmful dyes.

### **Supply and packing**

---

Delivery from stock by the full linear meter or full linear yard. The average piece length of this quality is approx. 50 linear meter or 55 linear yards. However, as is common within the textile industry, it is not possible to establish a standard roll length. The wallcovering is reeled on to a cardboard core, wrapped in polyethylene and protective end caps are fixed. Each roll is then packed in individual cardboard boxes or tubes, which are also made out of FSC certified woodpulp.

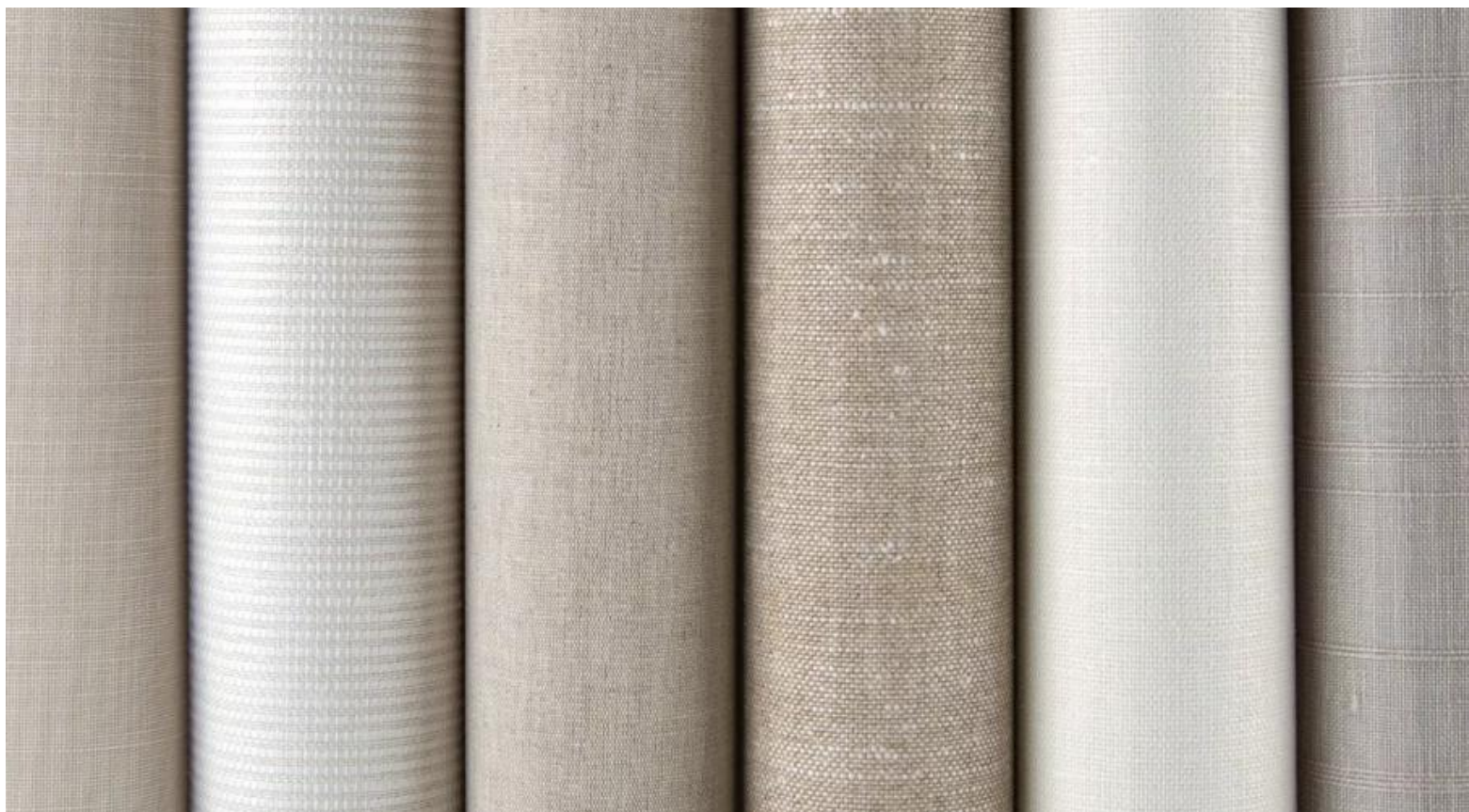
### **Harmonized System as per the World Customs Organization and Origin**

---

Textile Wallcovering, paper backed: 5905.00. Made in the Netherlands.

# Ecolin

"Linen Naturals"



68-2087



68-2088



68-2089

**SPECIFICATION** : **ECOLIN 68-2087/-2089**  
Collection : 3 colours from Tapetex 68-Linen

### **Physical properties**

---

Surface Composition : 100% Linen, flat woven and piece dyed.  
Backing : Paper backing of 70% woodpulp reinforced with 30% polyester.  
Width : 137 cm = 54"  
Weight : Approx. 520 gr/lm = 16.8 oz/lyd  
Thickness : Approx. 0.60 mm  
Hanging : Random.  
Precision trimmed for butt-joining by professional paper hangers.  
Installation advice supplied with every roll.  
After hanging brush 68-2087 and 68-2088 in one direction with soft brush.  
Adhesive : Adhesive Tapetex PRO-1 or similar premixed heavy duty, clear vinyl adhesive, suitable for textile wallcovering.  
Variation : There can be a variation between sample material and finished product.  
Stock cuttings are available for approval.

**Performance** : See detailed results on our website.

---

Surface finish : A stain repellent finish prevents waterbased splashes penetrating and staining the material.  
Periodic vacuuming is recommended to prevent dust from building up on the materials surface.  
Lightfastness : Test result as per ISO 105-B02:2014, Heraeus original Hanau Xenotest.  
LRV values : Testing as per BS 8493:2008+A1:2010, Datacolor DC500.  
Fire rating : ASTM E84 Class 1 or A and EUROCLASS (B s1 d0).  
Permeability rating : Test result 55.3 as per ASTM E96-12, Method B, Water Vapor Transmission.  
Indoor air quality : ASTM D6196, D5197 and D5116, Environmental Chamber Test.  
The testing followed UL 2821 "Greenguard Certification Program Method for Measuring and Evaluating Chemical Emissions".  
REACH SVHC : Compliant as per Centexbel testing.  
DoP No. : (CPR 305/2011), DOP-CPR-01

### **Sustainability**

---

Linen is made from a plant, a 100% renewable natural resource.  
The backing is FSC certified, FSC A000531.  
In production, all energy sources are either green, wind or hydro based and all processes are waterbased. The products do not contain PVC, chlorine, plasticizers, heavy metals or harmful dyes.

### **Supply and packing**

---

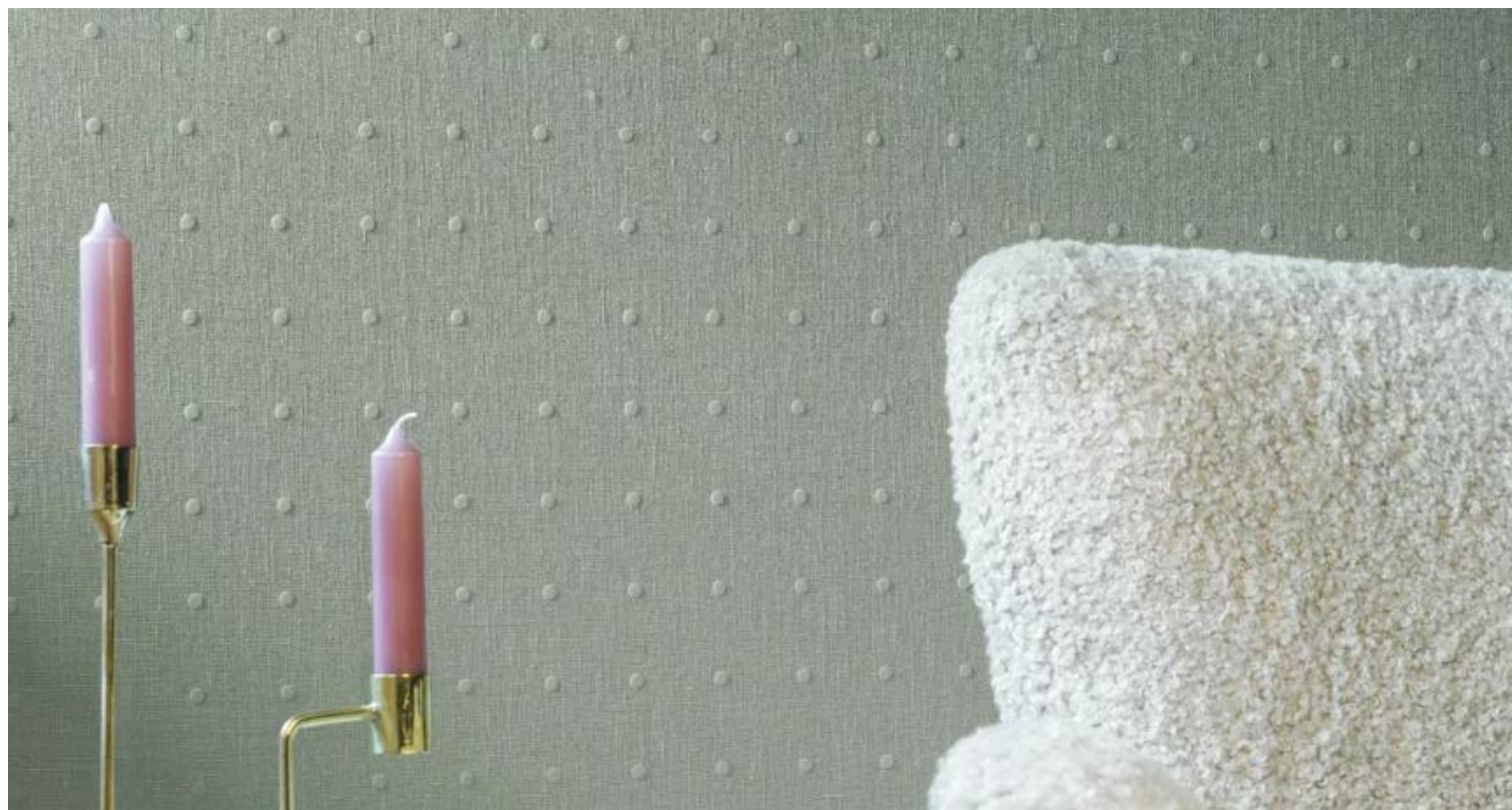
Delivery from stock by the full linear meter or full linear yard. The average piece length of this quality is approx. 50 linear meter or 55 linear yards. However, as is common within the textile industry, it is not possible to establish a standard roll length. The wallcovering is reeled on to a cardboard core, wrapped in polyethylene and protective end caps are fixed. Each roll is then packed in individual cardboard boxes or tubes, which are also made out of FSC certified woodpulp.

### **Harmonized System as per the World Customs Organization and Origin**

---

Textile Wallcovering, paper backed: 5905.00. Made in the Netherlands.

# Topalin



68-2090



68-2091



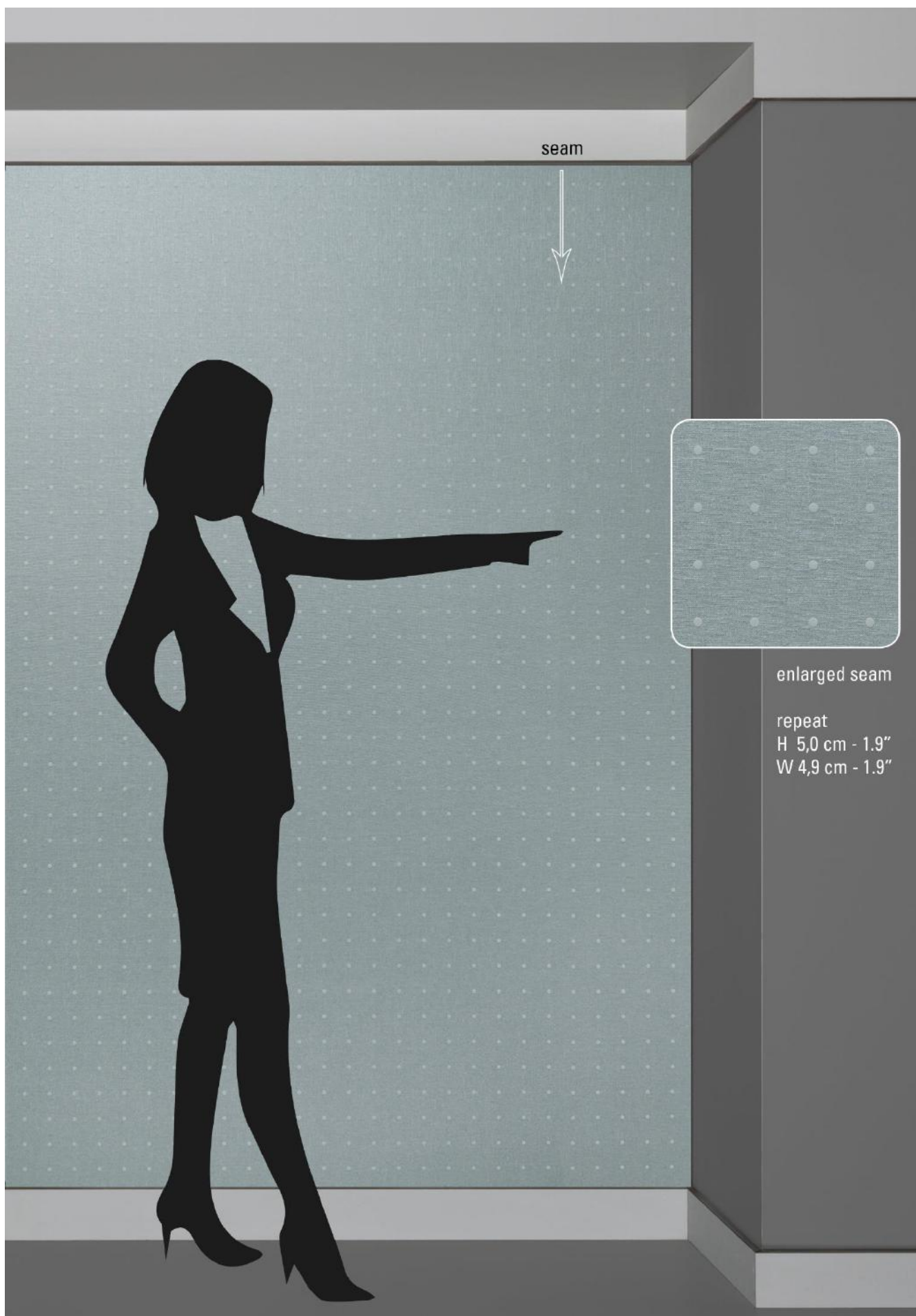
68-2092



68-2093

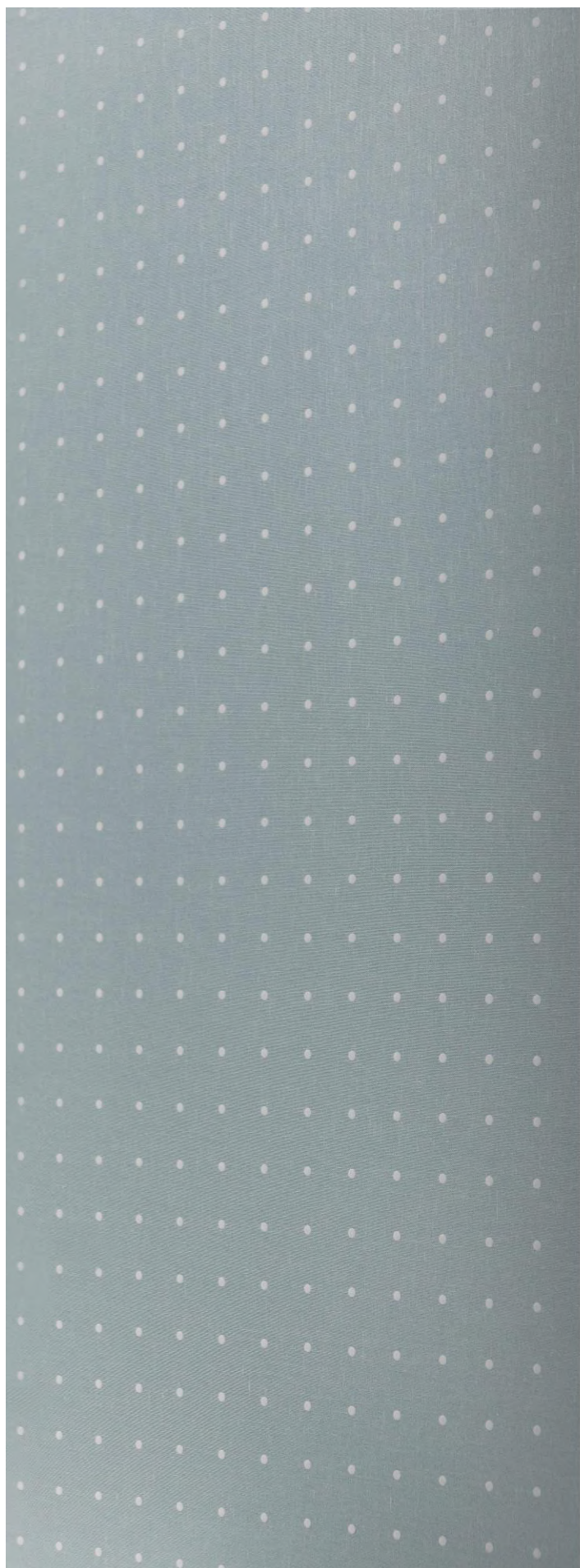


68-2094



**tapetex bv**  
Churchillaan 10, 5705 BK Helmond, The Netherlands  
(+31) 492 534690, info@tapetex.com, tapetex.com

**tapetex** wall materials



**SPECIFICATION** : **TOPALIN 68-2090/-2094**  
Collection : 5 colours from Tapetex 68-Linen

### **Physical properties**

---

Surface Composition : 100% Linen, flat woven and piece dyed.  
Backing : Paper backing of 70% woodpulp reinforced with 30% polyester.  
Width : 137 cm = 54"  
Weight : Approx. 370 gr/lm = 11.9 oz/lyd  
Thickness : Approx. 0.50 mm  
Hanging : On repeat 5.0 cm (1.9") x 4.9 cm (1.9") wide.  
Precision trimmed for butt-joining by professional paper hangers.  
Installation advice supplied with every roll.  
Use a rubber roller instead of a spatula.  
Adhesive : Adhesive Tapetex PRO-1 or similar premixed heavy duty, clear vinyl adhesive, suitable for textile wallcovering.  
Variation : There can be a variation between sample material and finished product.  
Stock cuttings are available for approval.

**Performance** : See detailed results on our website.

---

Surface finish : A stain repellent finish prevents waterbased splashes penetrating and staining the material.  
Periodic vacuuming is recommended to prevent dust from building up on the materials surface.  
Lightfastness : Test result as per ISO 105-B02:2014, Heraeus original Hanau Xenotest.  
LRV values : Testing as per BS 8493:2008+A1:2010, Datacolor DC500.  
Fire rating : ASTM E84 Class 1 or A and EUROCLASS (B s1 d0).  
Permeability rating : Test result 55.3 as per ASTM E96-12, Method B, Water Vapor Transmission.  
Indoor air quality : ASTM D6196, D5197 and D5116, Environmental Chamber Test.  
The testing followed UL 2821 "Greenguard Certification Program Method for Measuring and Evaluating Chemical Emissions".  
REACH SVHC : Compliant as per Centexbel testing.  
DoP No. : (CPR 305/2011), DOP-CPR-01

### **Sustainability**

---

Linen is made from a plant, a 100% renewable natural resource.  
The backing is FSC certified, FSC A000531.  
In production, all energy sources are either green, wind or hydro based and all processes are waterbased. The products do not contain PVC, chlorine, plasticizers, heavy metals or harmful dyes.

### **Supply and packing**

---

Delivery from stock by the full linear meter or full linear yard. The average piece length of this quality is approx. 50 linear meter or 55 linear yards. However, as is common within the textile industry, it is not possible to establish a standard roll length. The wallcovering is reeled on to a cardboard core, wrapped in polyethylene and protective end caps are fixed. Each roll is then packed in individual cardboard boxes or tubes, which are also made out of FSC certified woodpulp.

### **Harmonized System as per the World Customs Organization and Origin**

---

Textile Wallcovering, paper backed: 5905.00. Made in the Netherlands.

# Ringolin



68-2100



68-2101



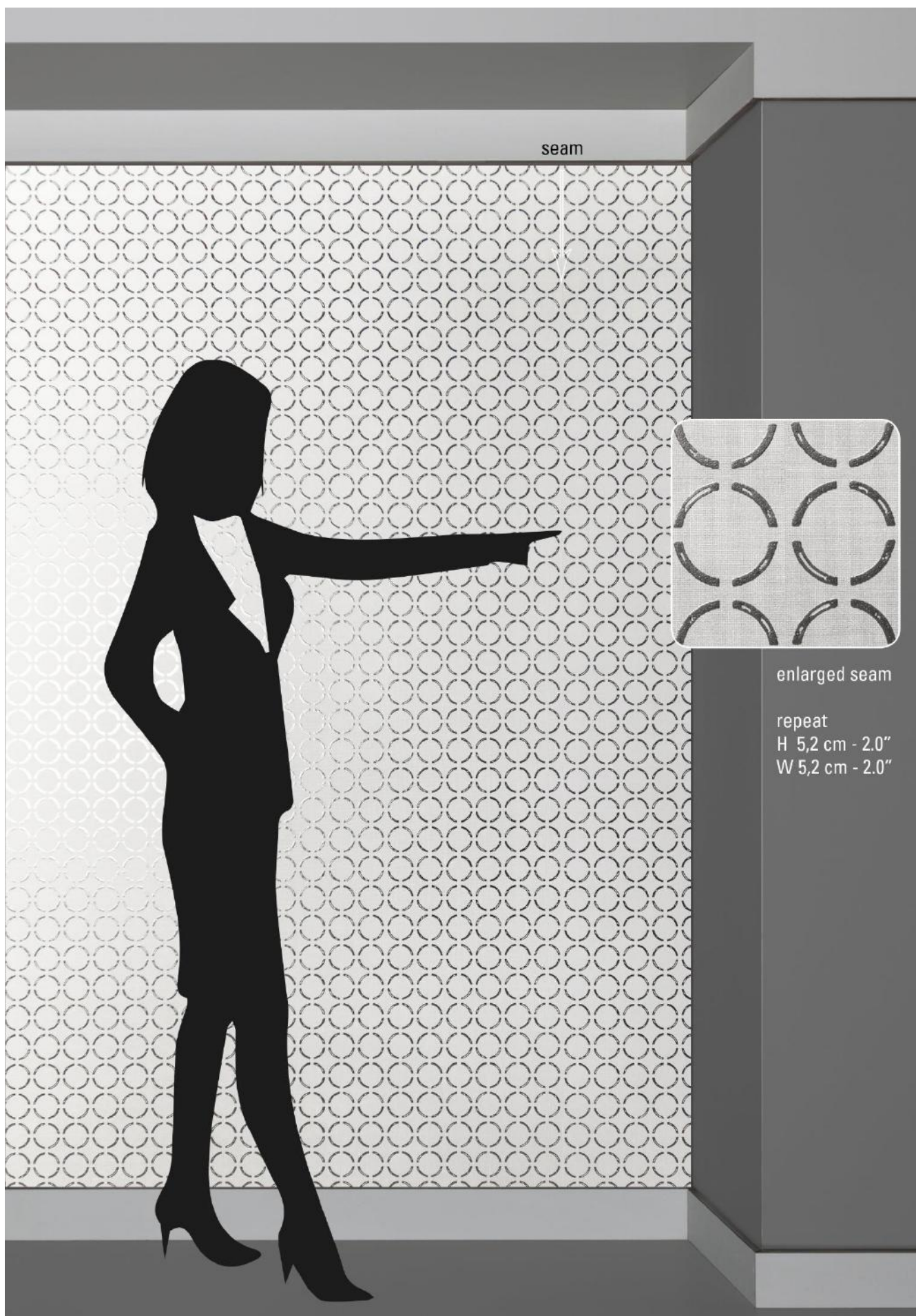
68-2102



68-2103



68-2104



seam



enlarged seam

repeat  
H 5,2 cm - 2.0"  
W 5,2 cm - 2.0"

**tapetex bv**  
Churchillaan 10, 5705 BK Helmond, The Netherlands  
(+31) 492 534690, info@tapetex.com, tapetex.com

**tapetex** wall materials



**SPECIFICATION** : **RINGOLIN 68-2100/-2104**  
Collection : 5 colours from Tapetex 68-Linen

### **Physical properties**

---

Surface Composition : 100% Linen, flat woven and piece dyed.  
Backing : Paper backing of 70% woodpulp reinforced with 30% polyester.  
Width : 137 cm = 54"  
Weight : Approx. 410 gr/lm = 13.2 oz/lyd  
Thickness : Approx. 0.60 mm  
Hanging : On repeat 5.2 cm (2") x 5.2 cm (2") wide.  
Precision trimmed for butt-joining by professional paper hangers.  
Installation advice supplied with every roll.  
Use a rubber roller instead of a spatula.  
Adhesive : Adhesive Tapetex PRO-1 or similar premixed heavy duty, clear vinyl adhesive, suitable for textile wallcovering.  
Variation : There can be a variation between sample material and finished product.  
Stock cuttings are available for approval.

**Performance** : See detailed results on our website.

---

Surface finish : A stain repellent finish prevents waterbased splashes penetrating and staining the material.  
Periodic vacuuming is recommended to prevent dust from building up on the materials surface.  
Lightfastness : Test result as per ISO 105-B02:2014, Heraeus original Hanau Xenotest.  
LRV values : Testing as per BS 8493:2008+A1:2010, Datacolor DC500.  
Fire rating : ASTM E84 Class 1 or A and EUROCLASS (B s1 d0).  
Permeability rating : Test result 55.3 as per ASTM E96-12, Method B, Water Vapor Transmission.  
Indoor air quality : ASTM D6196, D5197 and D5116, Environmental Chamber Test.  
The testing followed UL 2821 "Greenguard Certification Program Method for Measuring and Evaluating Chemical Emissions".  
REACH SVHC : Compliant as per Centexbel testing.  
DoP No. : (CPR 305/2011), DOP-CPR-01

### **Sustainability**

---

Linen is made from a plant, a 100% renewable natural resource.  
The backing is FSC certified, FSC A000531.  
In production, all energy sources are either green, wind or hydro based and all processes are waterbased. The products do not contain PVC, chlorine, plasticizers, heavy metals or harmful dyes.

### **Supply and packing**

---

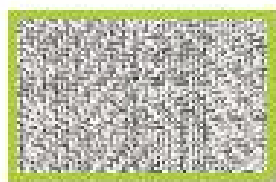
Delivery from stock by the full linear meter or full linear yard. The average piece length of this quality is approx. 50 linear meter or 55 linear yards. However, as is common within the textile industry, it is not possible to establish a standard roll length. The wallcovering is reeled on to a cardboard core, wrapped in polyethylene and protective end caps are fixed. Each roll is then packed in individual cardboard boxes or tubes, which are also made out of FSC certified woodpulp.

### **Harmonized System as per the World Customs Organization and Origin**

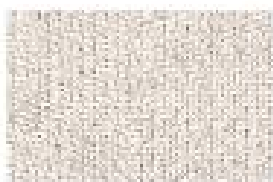
---

Textile Wallcovering, paper backed: 5905.00. Made in the Netherlands.

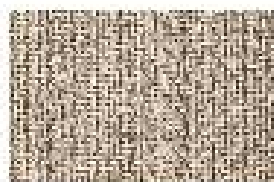
# Noblelin



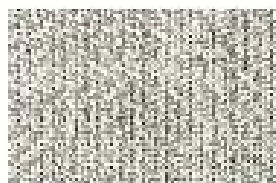
68-2110



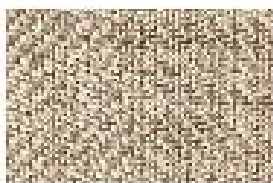
68-2111



68-2112



68-2113



68-2114



**SPECIFICATION** : **NOBLELIN 68-2110/-2114**  
Collection : 5 colours from Tapetex 68-Linen

### **Physical properties**

---

Surface Composition : 100% Linen, dobby woven and yarn dyed.  
Backing : Paper backing of 70% woodpulp reinforced with 30% polyester.  
Width : 137 cm = 54"  
Weight : Approx. 520 gr/lm = 16.8 oz/lyd  
Thickness : Approx. 0.70 mm  
Hanging : Random.  
Precision trimmed for butt-joining by professional paper hangers.  
Installation advice supplied with every roll.  
Adhesive : Adhesive Tapetex PRO-1 or similar premixed heavy duty, clear vinyl adhesive, suitable for textile wallcovering.  
Variation : There can be a variation between sample material and finished product. Stock cuttings are available for approval.

**Performance** : See detailed results on our website.

---

Surface finish : A stain repellent finish prevents waterbased splashes penetrating and staining the material.  
Periodic vacuuming is recommended to prevent dust from building up on the materials surface.  
Lightfastness : Test result as per ISO 105-B02:2014, Heraeus original Hanau Xenotest.  
LRV values : Testing as per BS 8493:2008+A1:2010, Datacolor DC500.  
Fire rating : ASTM E84 Class 1 or A and EUROCLASS (B s1 d0).  
Permeability rating : Test result 55.3 as per ASTM E96-12, Method B, Water Vapor Transmission.  
Indoor air quality : ASTM D6196, D5197 and D5116, Environmental Chamber Test.  
The testing followed UL 2821 "Greenguard Certification Program Method for Measuring and Evaluating Chemical Emissions".  
REACH SVHC : Compliant as per Centexbel testing.  
DoP No. : (CPR 305/2011), DOP-CPR-01

### **Sustainability**

---

Linen is made from a plant, a 100% renewable natural resource.  
The backing is FSC certified, FSC A000531.  
In production, all energy sources are either green, wind or hydro based and all processes are waterbased. The products do not contain PVC, chlorine, plasticizers, heavy metals or harmful dyes.

### **Supply and packing**

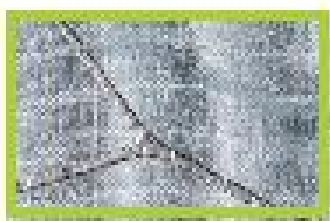
---

Delivery from stock by the full linear meter or full linear yard. The average piece length of this quality is approx. 50 linear meter or 55 linear yards. However, as is common within the textile industry, it is not possible to establish a standard roll length. The wallcovering is reeled on to a cardboard core, wrapped in polyethylene and protective end caps are fixed. Each roll is then packed in individual cardboard boxes or tubes, which are also made out of FSC certified woodpulp.

### **Harmonized System as per the World Customs Organization and Origin**

---

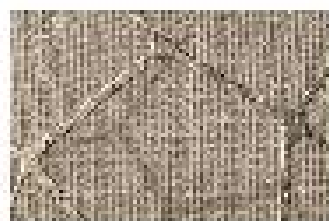
Textile Wallcovering, paper backed: 5905.00. Made in the Netherlands.



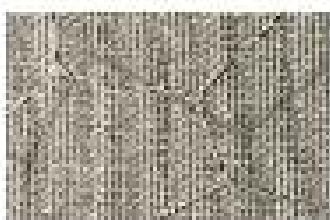
68-2120



68-2121



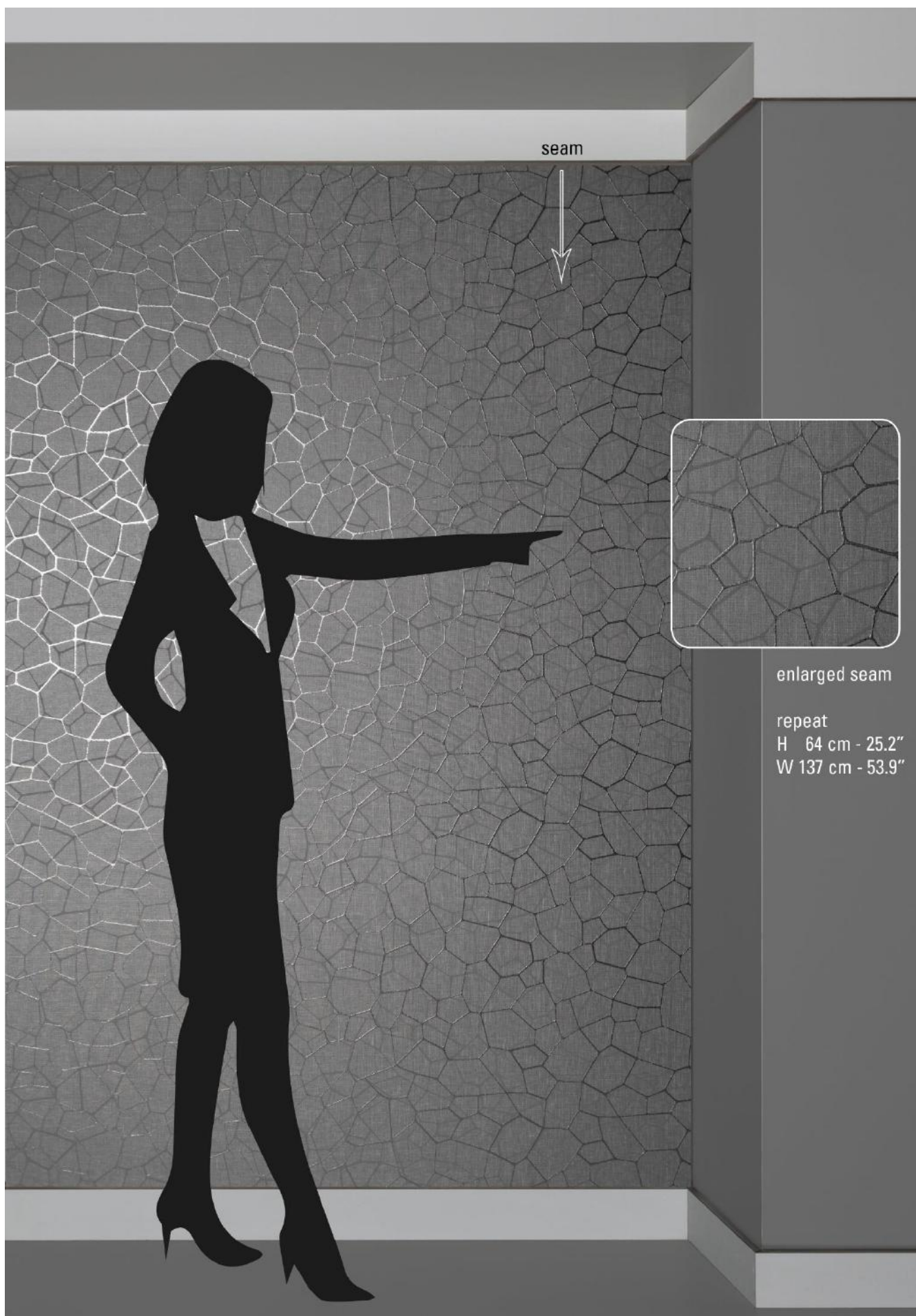
68-2122



68-2123



68-2124



tapetex bv  
Churchillaan 10, 5705 BK Helmond, The Netherlands  
(+31) 492 534690, info@tapetex.com, tapetex.com

tapetex wall materials



**SPECIFICATION** : **COMBOLIN 68-2120/-2124**  
Collection : 5 colours from Tapetex 68-Linen

### **Physical properties**

---

Surface Composition : 100% Linen, flat woven and piece dyed.  
Backing : Paper backing of 70% woodpulp reinforced with 30% polyester.  
Width : 137 cm = 54"  
Weight : Approx. 380 gr/lm = 12.2 oz/lyd  
Thickness : Approx. 0.60 mm  
Hanging : On repeat 64.0 cm (25.2") x 137 cm (53.9") wide.  
Precision trimmed for butt-joining by professional paper hangers.  
Installation advice supplied with every roll.  
Use a rubber roller instead of a spatula.  
Adhesive : Adhesive Tapetex PRO-1 or similar premixed heavy duty, clear vinyl adhesive, suitable for textile wallcovering.  
Variation : There can be a variation between sample material and finished product.  
Stock cuttings are available for approval.

**Performance** : See detailed results on our website.

---

Surface finish : A stain repellent finish prevents waterbased splashes penetrating and staining the material.  
Periodic vacuuming is recommended to prevent dust from building up on the materials surface.  
Lightfastness : Test result as per ISO 105-B02:2014, Heraeus original Hanau Xenotest.  
LRV values : Testing as per BS 8493:2008+A1:2010, Datacolor DC500.  
Fire rating : ASTM E84 Class 1 or A and EUROCLASS (B s1 d0).  
Permeability rating : Test result 55.3 as per ASTM E96-12, Method B, Water Vapor Transmission.  
Indoor air quality : ASTM D6196, D5197 and D5116, Environmental Chamber Test.  
The testing followed UL 2821 "Greenguard Certification Program Method for Measuring and Evaluating Chemical Emissions".  
REACH SVHC : Compliant as per Centexbel testing.  
DoP No. : (CPR 305/2011), DOP-CPR-01

### **Sustainability**

---

Linen is made from a plant, a 100% renewable natural resource.  
The backing is FSC certified, FSC A000531.  
In production, all energy sources are either green, wind or hydro based and all processes are waterbased. The products do not contain PVC, chlorine, plasticizers, heavy metals or harmful dyes.

### **Supply and packing**

---

Delivery from stock by the full linear meter or full linear yard. The average piece length of this quality is approx. 50 linear meter or 55 linear yards. However, as is common within the textile industry, it is not possible to establish a standard roll length. The wallcovering is reeled on to a cardboard core, wrapped in polyethylene and protective end caps are fixed. Each roll is then packed in individual cardboard boxes or tubes, which are also made out of FSC certified woodpulp.

### **Harmonized System as per the World Customs Organization and Origin**

---

Textile Wallcovering, paper backed: 5905.00. Made in the Netherlands.

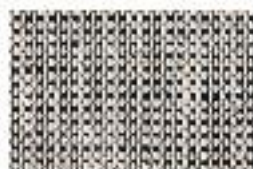
# Mesalin



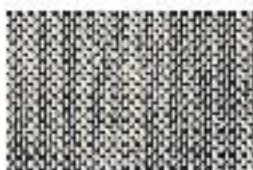
68-2130



68-2131



68-2132



68-2133



68-2134



**SPECIFICATION** : **MESALIN 68-2130/-2134**  
Collection : 5 colours from Tapetex 68-Linen

### **Physical properties**

---

Surface Composition : 100% Linen, flat woven and yarn dyed.  
Backing : Paper backing of 70% woodpulp reinforced with 30% polyester.  
Width : 137 cm = 54"  
Weight : Approx. 490 gr/lm = 15.8 oz/lyd  
Thickness : Approx. 0.60 mm  
Hanging : Random.  
Precision trimmed for butt-joining by professional paper hangers.  
Installation advice supplied with every roll.  
Adhesive : Adhesive Tapetex PRO-1 or similar premixed heavy duty, clear vinyl adhesive, suitable for textile wallcovering.  
Variation : There can be a variation between sample material and finished product. Stock cuttings are available for approval.

**Performance** : See detailed results on our website.

---

Surface finish : A stain repellent finish prevents waterbased splashes penetrating and staining the material.  
Periodic vacuuming is recommended to prevent dust from building up on the materials surface.  
Lightfastness : Test result as per ISO 105-B02:2014, Heraeus original Hanau Xenotest.  
LRV values : Testing as per BS 8493:2008+A1:2010, Datacolor DC500.  
Fire rating : ASTM E84 Class 1 or A and EUROCLASS (B s1 d0).  
Permeability rating : Test result 55.3 as per ASTM E96-12, Method B, Water Vapor Transmission.  
Indoor air quality : ASTM D6196, D5197 and D5116, Environmental Chamber Test.  
The testing followed UL 2821 "Greenguard Certification Program Method for Measuring and Evaluating Chemical Emissions".  
REACH SVHC : Compliant as per Centexbel testing.  
DoP No. : (CPR 305/2011), DOP-CPR-01

### **Sustainability**

---

Linen is made from a plant, a 100% renewable natural resource.  
The backing is FSC certified, FSC A000531.  
In production, all energy sources are either green, wind or hydro based and all processes are waterbased. The products do not contain PVC, chlorine, plasticizers, heavy metals or harmful dyes.

### **Supply and packing**

---

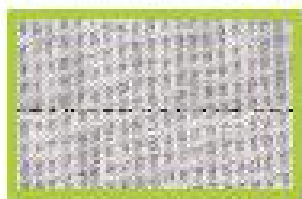
Delivery from stock by the full linear meter or full linear yard. The average piece length of this quality is approx. 50 linear meter or 55 linear yards. However, as is common within the textile industry, it is not possible to establish a standard roll length. The wallcovering is reeled on to a cardboard core, wrapped in polyethylene and protective end caps are fixed. Each roll is then packed in individual cardboard boxes or tubes, which are also made out of FSC certified woodpulp.

### **Harmonized System as per the World Customs Organization and Origin**

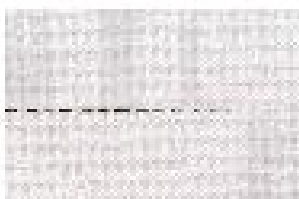
---

Textile Wallcovering, paper backed: 5905.00. Made in the Netherlands.

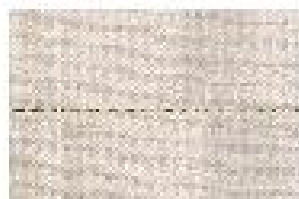
# Metalin



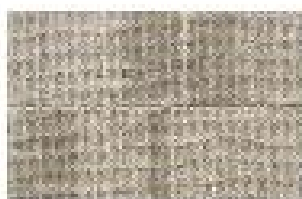
68-2140



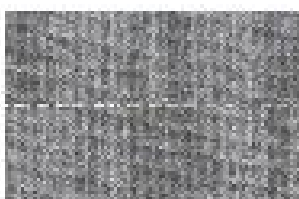
68-2141



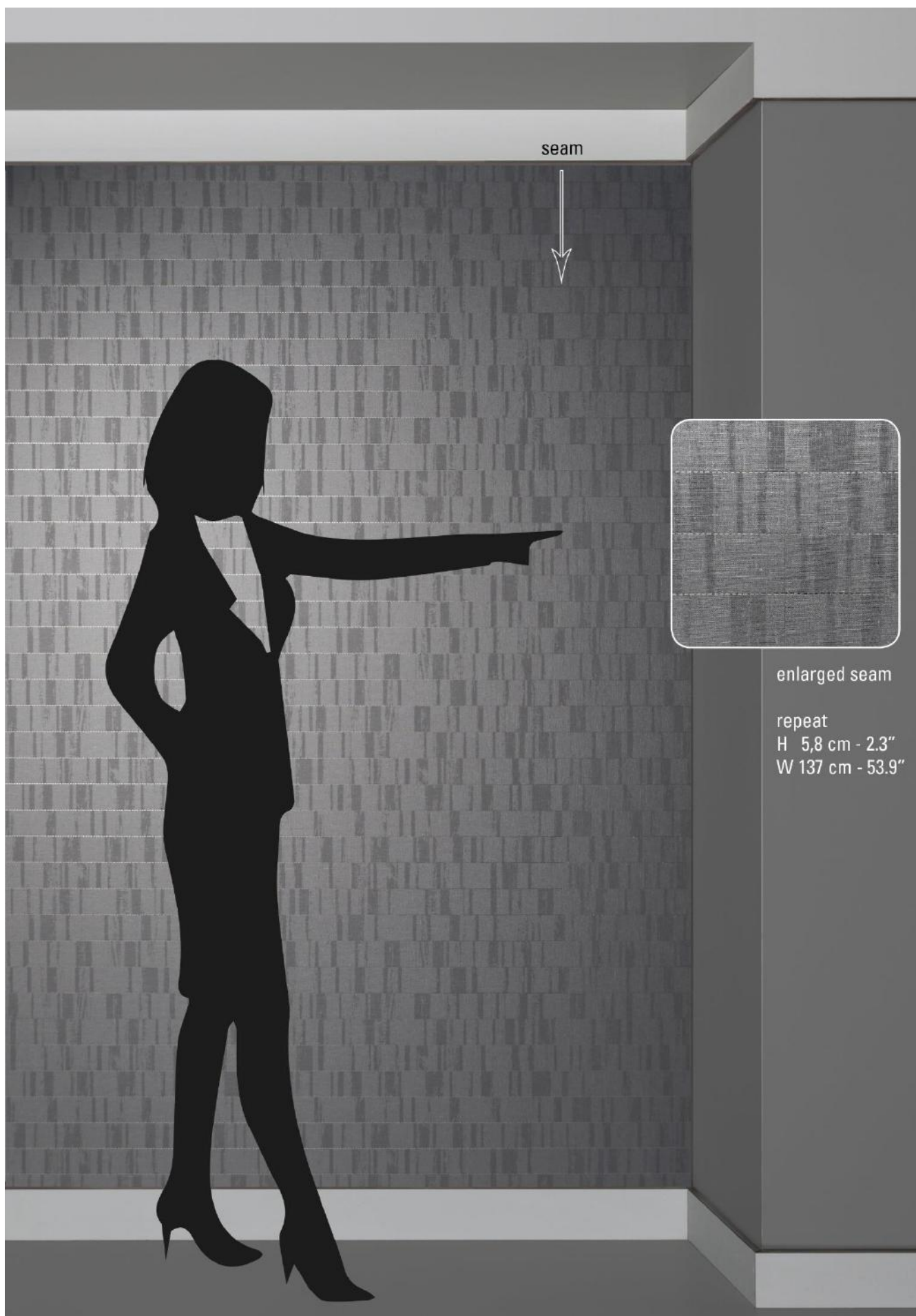
68-2142



68-2143



68-2144



**tapetex bv**  
Churchillaan 10, 5705 BK Helmond, The Netherlands  
(+31) 492 534690, info@tapetex.com, tapetex.com

**tapetex** wall materials



**SPECIFICATION** : **METALIN 68-2140/-2144**  
Collection : 5 colours from Tapetex 68-Linen

### **Physical properties**

---

Surface Composition : 100% Linen, flat woven and piece dyed.  
Backing : Paper backing of 70% woodpulp reinforced with 30% polyester.  
Width : 137 cm = 54"  
Weight : Approx. 590 gr/lm = 19.0 oz/lyd  
Thickness : Approx. 0.60 mm  
Hanging : On repeat 5.8 cm (2.3") x 137 cm (53.9") wide.  
Precision trimmed for butt-joining by professional paper hangers.  
Installation advice supplied with every roll.  
Use a rubber roller instead of a spatula.  
Adhesive : Adhesive Tapetex PRO-1 or similar premixed heavy duty, clear vinyl adhesive, suitable for textile wallcovering.  
Variation : There can be a variation between sample material and finished product.  
Stock cuttings are available for approval.

**Performance** : See detailed results on our website.

---

Surface finish : A stain repellent finish prevents waterbased splashes penetrating and staining the material.  
Periodic vacuuming is recommended to prevent dust from building up on the materials surface.  
Lightfastness : Test result as per ISO 105-B02:2014, Heraeus original Hanau Xenotest.  
LRV values : Testing as per BS 8493:2008+A1:2010, Datacolor DC500.  
Fire rating : ASTM E84 Class 1 or A and EUROCLASS (B s1 d0).  
Permeability rating : Test result 55.3 as per ASTM E96-12, Method B, Water Vapor Transmission.  
Indoor air quality : ASTM D6196, D5197 and D5116, Environmental Chamber Test.  
The testing followed UL 2821 "Greenguard Certification Program Method for Measuring and Evaluating Chemical Emissions".  
REACH SVHC : Compliant as per Centexbel testing.  
DoP No. : (CPR 305/2011), DOP-CPR-01

### **Sustainability**

---

Linen is made from a plant, a 100% renewable natural resource.  
The backing is FSC certified, FSC A000531.  
In production, all energy sources are either green, wind or hydro based and all processes are waterbased. The products do not contain PVC, chlorine, plasticizers, heavy metals or harmful dyes.

### **Supply and packing**

---

Delivery from stock by the full linear meter or full linear yard. The average piece length of this quality is approx. 40 linear meter or 44 linear yards. However, as is common within the textile industry, it is not possible to establish a standard roll length. The wallcovering is reeled on to a cardboard core, wrapped in polyethylene and protective end caps are fixed. Each roll is then packed in individual cardboard boxes or tubes, which are also made out of FSC certified woodpulp.

### **Harmonized System as per the World Customs Organization and Origin**

---

Textile Wallcovering, paper backed: 5905.00. Made in the Netherlands.

# Escalin



68-2150



68-2151



68-2152



68-2153



68-2154



**tapetex bv**  
Churchillaan 10, 5705 BK Helmond, The Netherlands  
(+31) 492 534690, info@tapetex.com, tapetex.com

**tapetex** wall materials



**SPECIFICATION** : **ESCALIN 68-2150/-2154**  
Collection : 5 colours from Tapetex 68-Linen

### **Physical properties**

---

Surface Composition : 94% Linen, 6% Polyester; flat woven and piece dyed.  
Backing : Paper backing of 70% woodpulp reinforced with 30% polyester.  
Width : 137 cm = 54"  
Weight : Approx. 550 gr/lm = 17.7 oz/lyd  
Thickness : Approx. 0.70 mm  
Hanging : Random.  
Precision trimmed for butt-joining by professional paper hangers.  
Installation advice supplied with every roll.  
Use a rubber roller instead of a spatula.  
Adhesive : Adhesive Tapetex PRO-1 or similar premixed heavy duty, clear vinyl adhesive, suitable for textile wallcovering.  
Variation : There can be a variation between sample material and finished product.  
Stock cuttings are available for approval.

**Performance** : See detailed results on our website.

---

Surface finish : A stain repellent finish prevents waterbased splashes penetrating and staining the material.  
Periodic vacuuming is recommended to prevent dust from building up on the materials surface.  
Lightfastness : Test result as per ISO 105-B02:2014, Heraeus original Hanau Xenotest.  
LRV values : Testing as per BS 8493:2008+A1:2010, Datacolor DC500.  
Fire rating : ASTM E84 Class 1 or A and EUROCLASS (B s2 d0).  
Permeability rating : Test result 49.4 as per ASTM E96-12, Method B, Water Vapor Transmission.  
Indoor air quality : ASTM D6196, D5197 and D5116, Environmental Chamber Test.  
The testing followed UL 2821 "Greenguard Certification Program Method for Measuring and Evaluating Chemical Emissions".  
REACH SVHC : Compliant as per Centexbel testing.  
DoP No. : (CPR 305/2011), DOP-CPR-01

### **Sustainability**

---

Linen is made from a plant, a 100% renewable natural resource.  
The backing is FSC certified, FSC A000531.  
In production, all energy sources are either green, wind or hydro based and all processes are waterbased. The products do not contain PVC, chlorine, plasticizers, heavy metals or harmful dyes.

### **Supply and packing**

---

Delivery from stock by the full linear meter or full linear yard. The average piece length of this quality is approx. 50 linear meter or 55 linear yards. However, as is common within the textile industry, it is not possible to establish a standard roll length. The wallcovering is reeled on to a cardboard core, wrapped in polyethylene and protective end caps are fixed. Each roll is then packed in individual cardboard boxes or tubes, which are also made out of FSC certified woodpulp.

### **Harmonized System as per the World Customs Organization and Origin**

---

Textile Wallcovering, paper backed: 5905.00. Made in the Netherlands.

# Terralin



68-2160



68-2161



68-2162



68-2163



68-2164



68-2165



68-2166



68-2167



68-2168



68-2169



tapetex bv  
Churchillaan 10, 5705 BK Helmond, The Netherlands  
(+31) 492 534690, info@tapetex.com, tapetex.com

tapetex wall materials



**SPECIFICATION** : **TERRALIN 68-2160/-2169**  
Collection : 10 colours from Tapetex 68-Linen

### **Physical properties**

---

Surface Composition : 100% Linen, dobby woven and piece dyed.  
Backing : Paper backing of 70% woodpulp reinforced with 30% polyester.  
Width : 137 cm = 54"  
Weight : Approx. 380 gr/lm = 12.3 oz/lyd  
Thickness : Approx. 0.50 mm  
Hanging : Random or on approx. repeat.  
Align at eye-level if there are minor deviations in the joining of the fabric.  
Precision trimmed for butt-joining by professional paper hangers.  
Installation advice supplied with every roll.  
Adhesive : Adhesive Tapetex PRO-1 or similar premixed heavy duty, clear vinyl adhesive, suitable for textile wallcovering.  
Variation : There can be a variation between sample material and finished product.  
Stock cuttings are available for approval.

**Performance** : See detailed results on our website.

---

Surface finish : A stain repellent finish prevents waterbased splashes penetrating and staining the material.  
Periodic vacuuming is recommended to prevent dust from building up on the materials surface.  
Lightfastness : Test result as per ISO 105-B02:2014, Heraeus original Hanau Xenotest.  
LRV values : Testing as per BS 8493:2008+A1:2010, Datacolor DC500.  
Fire rating : ASTM E84 Class 1 or A and EUROCLASS (B s1 d0).  
Permeability rating : Test result 55.3 as per ASTM E96-12, Method B, Water Vapor Transmission.  
Indoor air quality : ASTM D6196, D5197 and D5116, Environmental Chamber Test.  
The testing followed UL 2821 "Greenguard Certification Program Method for Measuring and Evaluating Chemical Emissions".  
REACH SVHC : Compliant as per Centexbel testing.  
DoP No. : (CPR 305/2011), DOP-CPR-01

### **Sustainability**

---

Linen is made from a plant, a 100% renewable natural resource.  
The backing is FSC certified, FSC A000531.  
In production, all energy sources are either green, wind or hydro based and all processes are waterbased. The products do not contain PVC, chlorine, plasticizers, heavy metals or harmful dyes.

### **Supply and packing**

---

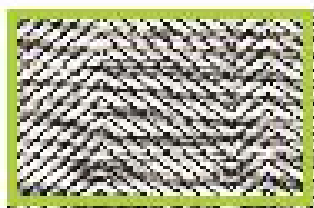
Delivery from stock by the full linear meter or full linear yard. The average piece length of this quality is approx. 50 linear meter or 55 linear yards. However, as is common within the textile industry, it is not possible to establish a standard roll length. The wallcovering is reeled on to a cardboard core, wrapped in polyethylene and protective end caps are fixed. Each roll is then packed in individual cardboard boxes or tubes, which are also made out of FSC certified woodpulp.

### **Harmonized System as per the World Customs Organization and Origin**

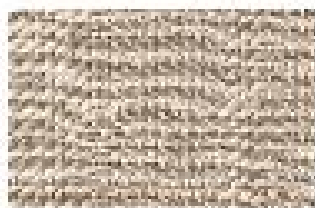
---

Textile Wallcovering, paper backed: 5905.00. Made in the Netherlands.

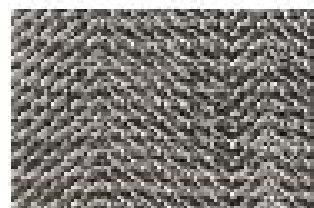
# Muralin



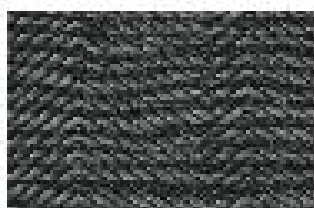
68-2170



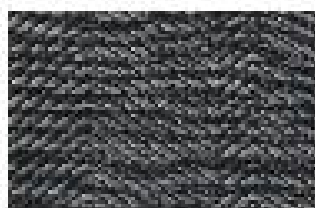
68-2171



68-2172



68-2173



68-2174

**tapetex bv**  
Churchillaan 10, 5705 BK Helmond, The Netherlands  
(+31) 492 534690, info@tapetex.com, tapetex.com

**tapetex** wall materials



**SPECIFICATION** : **MURALIN 68-2170/-2174**  
Collection : 5 colours from Tapetex 68-Linen

### **Physical properties**

---

Surface Composition : 100% Linen, dobby woven and yarn dyed.  
Backing : Paper backing of 70% woodpulp reinforced with 30% polyester.  
Width : 137 cm = 54"  
Weight : Approx. 480 gr/lm = 15.5 oz/lyd  
Thickness : Approx. 0.50 mm  
Hanging : Random.  
Precision trimmed for butt-joining by professional paper hangers.  
Installation advice supplied with every roll.  
Adhesive : Adhesive Tapetex PRO-1 or similar premixed heavy duty, clear vinyl adhesive, suitable for textile wallcovering.  
Variation : There can be a variation between sample material and finished product. Stock cuttings are available for approval.

**Performance** : See detailed results on our website.

---

Surface finish : A stain repellent finish prevents waterbased splashes penetrating and staining the material.  
Periodic vacuuming is recommended to prevent dust from building up on the materials surface.  
Lightfastness : Test result as per ISO 105-B02:2014, Heraeus original Hanau Xenotest.  
LRV values : Testing as per BS 8493:2008+A1:2010, Datacolor DC500.  
Fire rating : ASTM E84 Class 1 or A and EUROCLASS (B s1 d0).  
Permeability rating : Test result 55.3 as per ASTM E96-12, Method B, Water Vapor Transmission.  
Indoor air quality : ASTM D6196, D5197 and D5116, Environmental Chamber Test.  
The testing followed UL 2821 "Greenguard Certification Program Method for Measuring and Evaluating Chemical Emissions".  
REACH SVHC : Compliant as per Centexbel testing.  
DoP No. : (CPR 305/2011), DOP-CPR-01

### **Sustainability**

---

Linen is made from a plant, a 100% renewable natural resource.  
The backing is FSC certified, FSC A000531.  
In production, all energy sources are either green, wind or hydro based and all processes are waterbased. The products do not contain PVC, chlorine, plasticizers, heavy metals or harmful dyes.

### **Supply and packing**

---

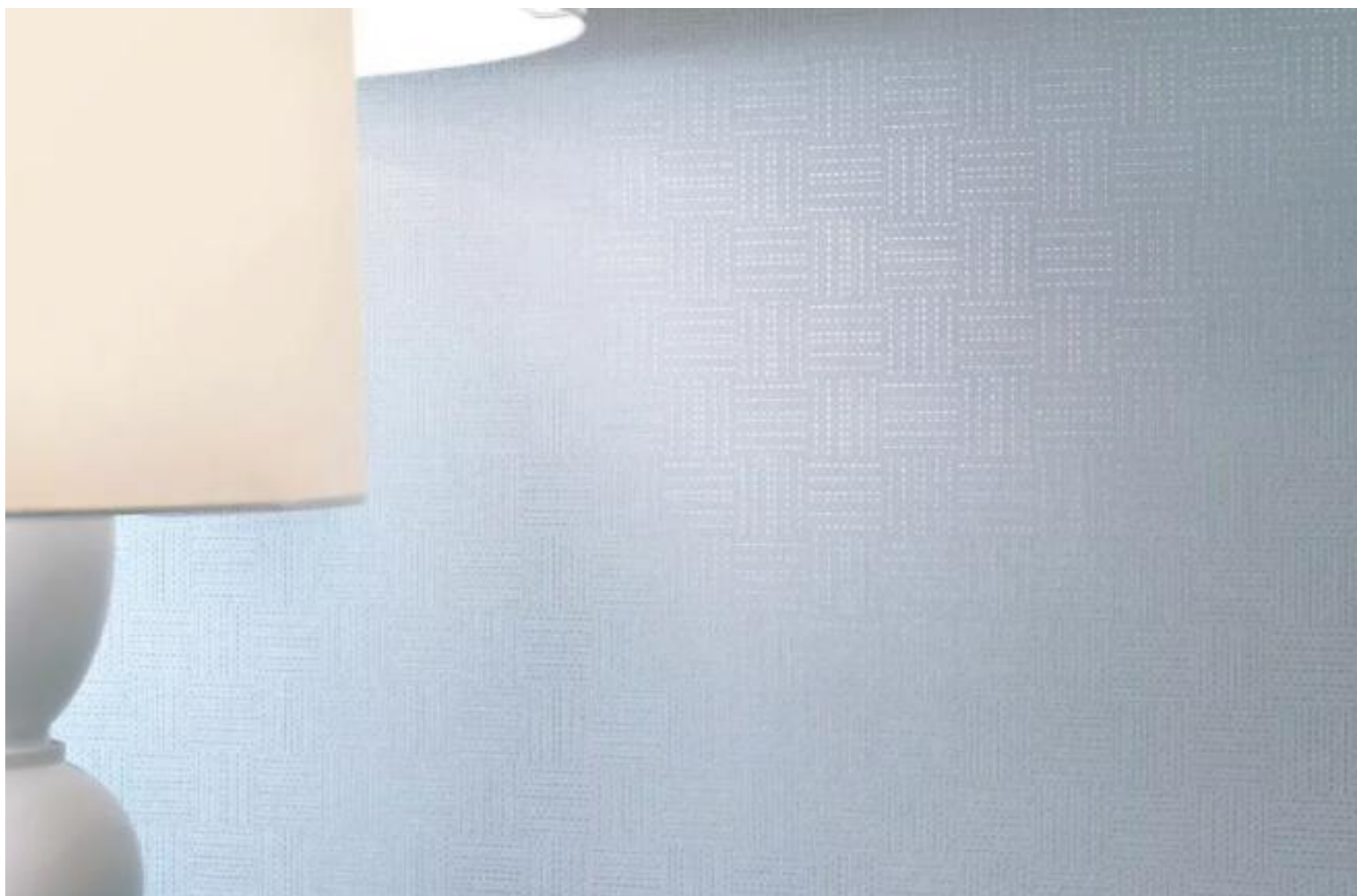
Delivery from stock by the full linear meter or full linear yard. The average piece length of this quality is approx. 50 linear meter or 55 linear yards. However, as is common within the textile industry, it is not possible to establish a standard roll length. The wallcovering is reeled on to a cardboard core, wrapped in polyethylene and protective end caps are fixed. Each roll is then packed in individual cardboard boxes or tubes, which are also made out of FSC certified woodpulp.

### **Harmonized System as per the World Customs Organization and Origin**

---

Textile Wallcovering, paper backed: 5905.00. Made in the Netherlands.

# Meshlin



68-2180



68-2181



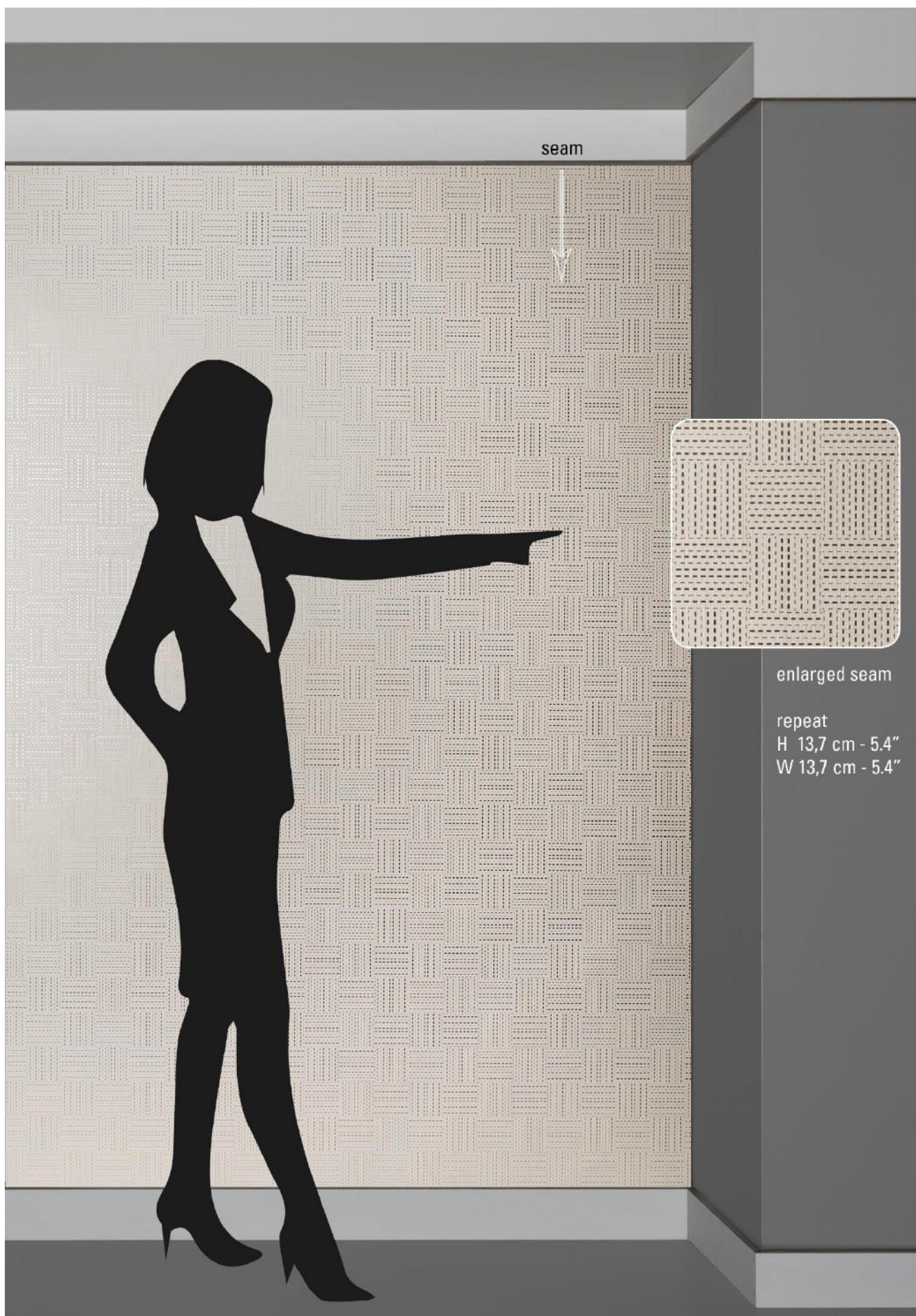
68-2182



68-2183

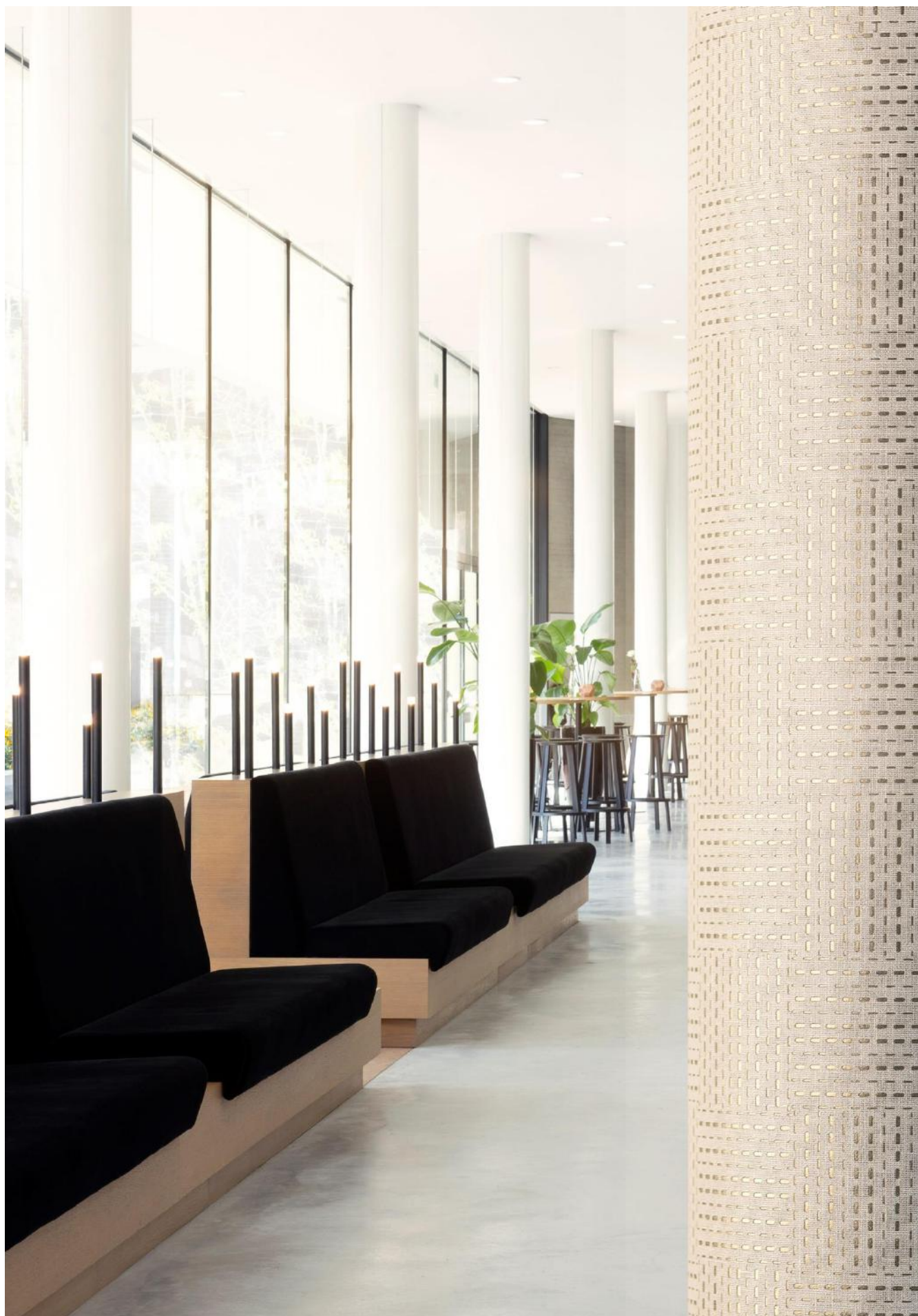


68-2184



**tapetex bv**  
Churchillaan 10, 5705 BK Helmond, The Netherlands  
(+31) 492 534690, info@tapetex.com, tapetex.com

**tapetex** wall materials



**SPECIFICATION** : **MESHLIN 68-2180/-2184**  
Collection : 5 colours from Tapetex 68-Linen

### **Physical properties**

---

Surface Composition : 100% Linen, flat woven and piece dyed.  
Backing : Paper backing of 70% woodpulp reinforced with 30% polyester.  
Width : 137 cm = 54"  
Weight : Approx. 550 gr/lm = 17.7 oz/lyd  
Thickness : Approx. 0.60 mm  
Hanging : On repeat 13.7 cm (5.4") x 13.7 cm (5.4") wide.  
Precision trimmed for butt-joining by professional paper hangers.  
Installation advice supplied with every roll.  
Use a rubber roller instead of a spatula.  
Adhesive : Adhesive Tapetex PRO-1 or similar premixed heavy duty, clear vinyl adhesive, suitable for textile wallcovering.  
Variation : There can be a variation between sample material and finished product.  
Stock cuttings are available for approval.

**Performance** : See detailed results on our website.

---

Surface finish : A stain repellent finish prevents waterbased splashes penetrating and staining the material.  
Periodic vacuuming is recommended to prevent dust from building up on the materials surface.  
Lightfastness : Test result as per ISO 105-B02:2014, Heraeus original Hanau Xenotest.  
LRV values : Testing as per BS 8493:2008+A1:2010, Datacolor DC500.  
Fire rating : ASTM E84 Class 1 or A and EUROCLASS (B s1 d0).  
Permeability rating : Test result 55.3 as per ASTM E96-12, Method B, Water Vapor Transmission.  
Indoor air quality : ASTM D6196, D5197 and D5116, Environmental Chamber Test.  
The testing followed UL 2821 "Greenguard Certification Program Method for Measuring and Evaluating Chemical Emissions".  
REACH SVHC : Compliant as per Centexbel testing.  
DoP No. : (CPR 305/2011), DOP-CPR-01

### **Sustainability**

---

Linen is made from a plant, a 100% renewable natural resource.  
The backing is FSC certified, FSC A000531.  
In production, all energy sources are either green, wind or hydro based and all processes are waterbased. The products do not contain PVC, chlorine, plasticizers, heavy metals or harmful dyes.

### **Supply and packing**

---

Delivery from stock by the full linear meter or full linear yard. The average piece length of this quality is approx. 50 linear meter or 55 linear yards. However, as is common within the textile industry, it is not possible to establish a standard roll length. The wallcovering is reeled on to a cardboard core, wrapped in polyethylene and protective end caps are fixed. Each roll is then packed in individual cardboard boxes or tubes, which are also made out of FSC certified woodpulp.

### **Harmonized System as per the World Customs Organization and Origin**

---

Textile Wallcovering, paper backed: 5905.00. Made in the Netherlands.

# Ivylin



68-2190



68-2191



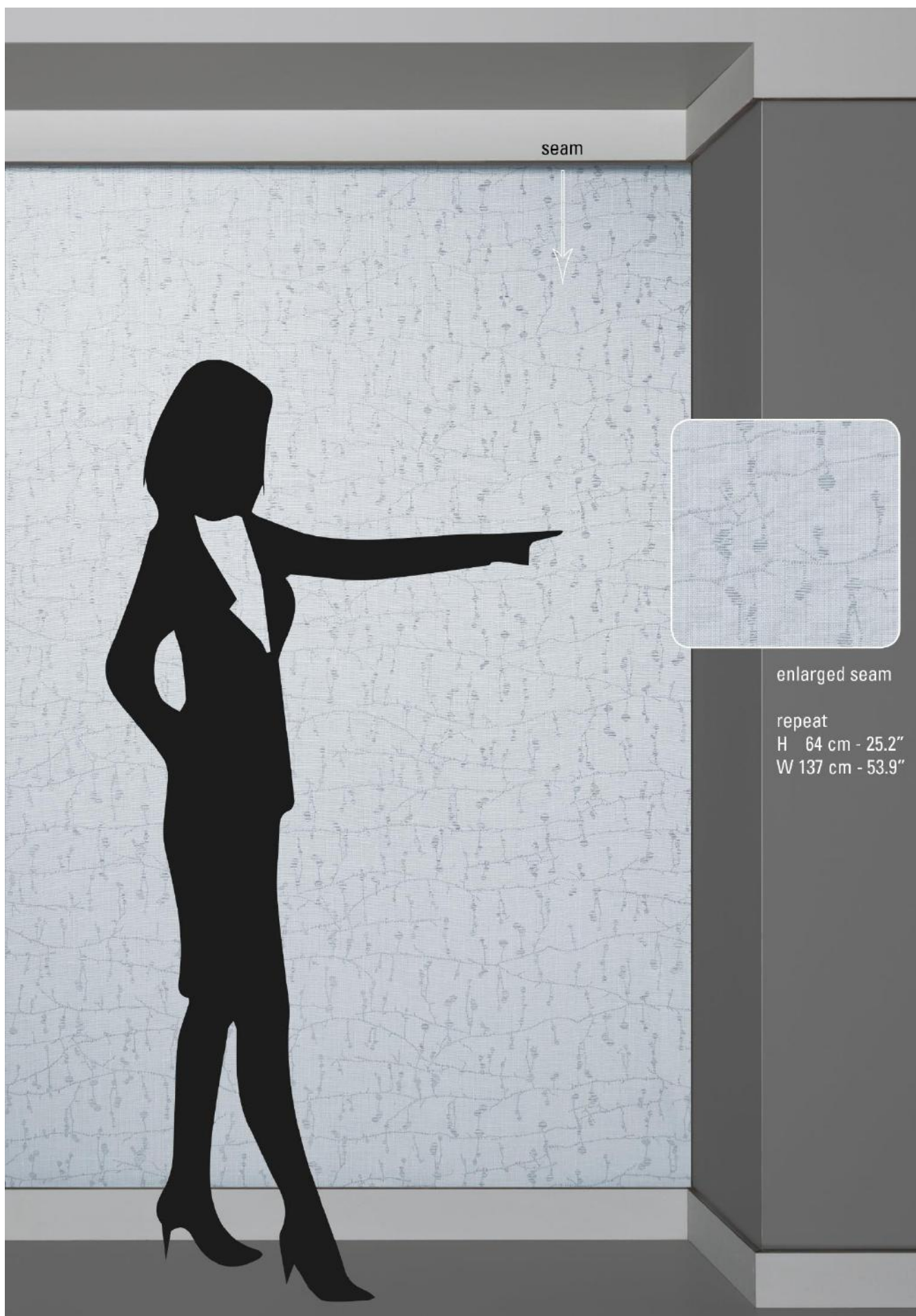
68-2192



68-2193



68-2194



tapetex bv  
Churchillaan 10, 5705 BK Helmond, The Netherlands  
(+31) 492 534690, info@tapetex.com, tapetex.com

tapetex wall materials



**SPECIFICATION** : **IVYLIN 68-2190/-2194**  
Collection : 5 colours from Tapetex 68-Linen

### **Physical properties**

---

Surface Composition : 100% Linen, flat woven and piece dyed.  
Backing : Paper backing of 70% woodpulp reinforced with 30% polyester.  
Width : 137 cm = 54"  
Weight : Approx. 930 gr/lm = 30.0 oz/lyd  
Thickness : Approx. 1.00 mm  
Hanging : On repeat 64 cm (25.2") x 137 cm (53.9") wide.  
Precision trimmed for butt-joining by professional paper hangers.  
Installation advice supplied with every roll.  
Use a rubber roller instead of a spatula.  
Adhesive : Adhesive Tapetex PRO-1 or similar premixed heavy duty, clear vinyl adhesive, suitable for textile wallcovering.  
Variation : There can be a variation between sample material and finished product.  
Stock cuttings are available for approval.

**Performance** : See detailed results on our website.

---

Surface finish : A stain repellent finish prevents waterbased splashes penetrating and staining the material.  
Periodic vacuuming is recommended to prevent dust from building up on the materials surface.  
Lightfastness : Test result as per ISO 105-B02:2014, Heraeus original Hanau Xenotest.  
LRV values : Testing as per BS 8493:2008+A1:2010, Datacolor DC500.  
Fire rating : ASTM E84 Class 1 or A and EUROCLASS (B s1 d0).  
Permeability rating : Test result 55.3 as per ASTM E96-12, Method B, Water Vapor Transmission.  
Indoor air quality : ASTM D6196, D5197 and D5116, Environmental Chamber Test.  
The testing followed UL 2821 "Greenguard Certification Program Method for Measuring and Evaluating Chemical Emissions".  
REACH SVHC : Compliant as per Centexbel testing.  
DoP No. : (CPR 305/2011), DOP-CPR-01

### **Sustainability**

---

Linen is made from a plant, a 100% renewable natural resource.  
The backing is FSC certified, FSC A000531.  
In production, all energy sources are either green, wind or hydro based and all processes are waterbased. The products do not contain PVC, chlorine, plasticizers, heavy metals or harmful dyes.

### **Supply and packing**

---

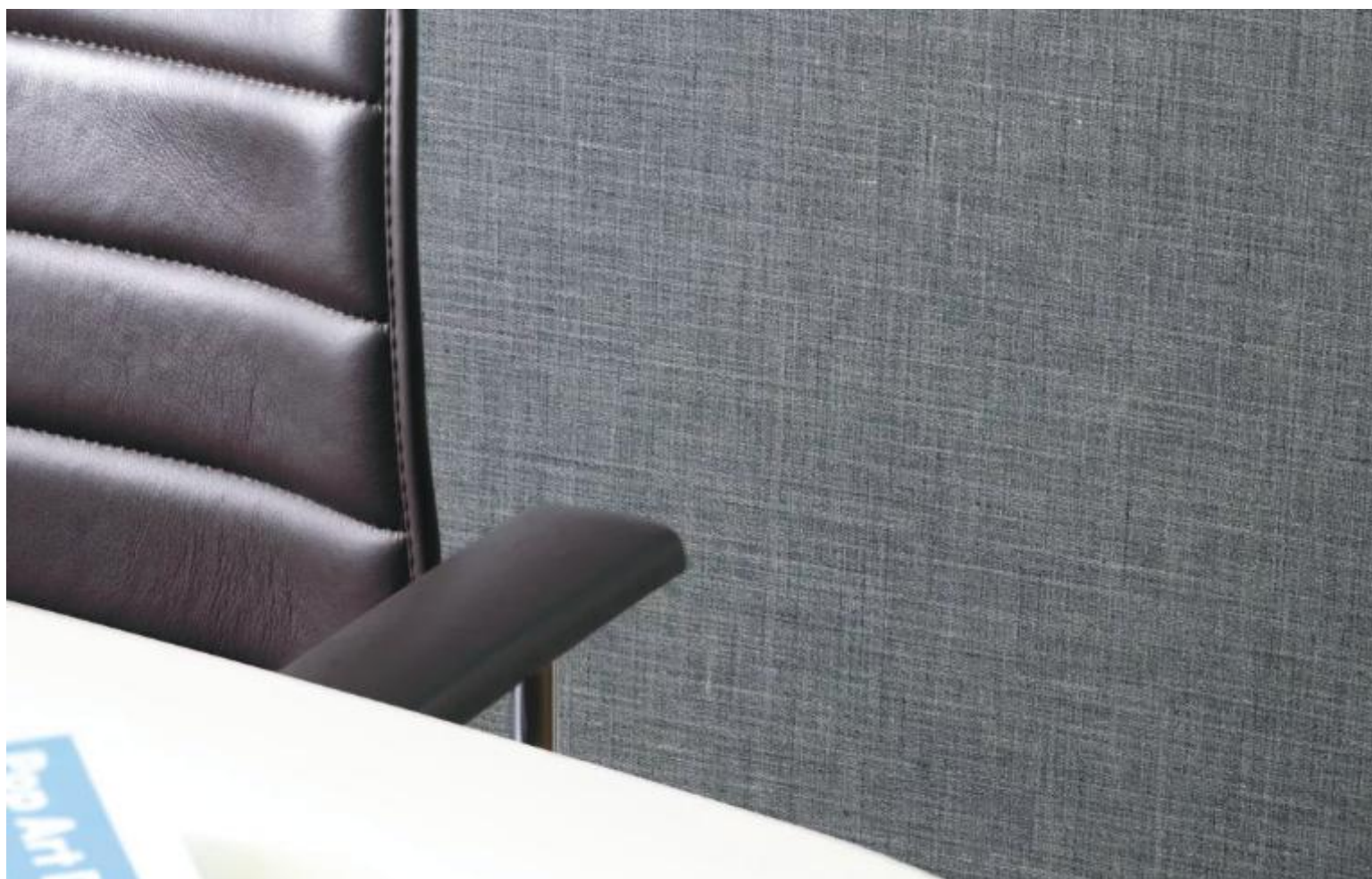
Delivery from stock by the full linear meter or full linear yard. The average piece length of this quality is approx. 30 linear meter or 33 linear yards. However, as is common within the textile industry, it is not possible to establish a standard roll length. The wallcovering is reeled on to a cardboard core, wrapped in polyethylene and protective end caps are fixed. Each roll is then packed in individual cardboard boxes or tubes, which are also made out of FSC certified woodpulp.

### **Harmonized System as per the World Customs Organization and Origin**

---

Textile Wallcovering, paper backed: 5905.00. Made in the Netherlands.

# Zaralin



68-2200



68-2201



68-2202



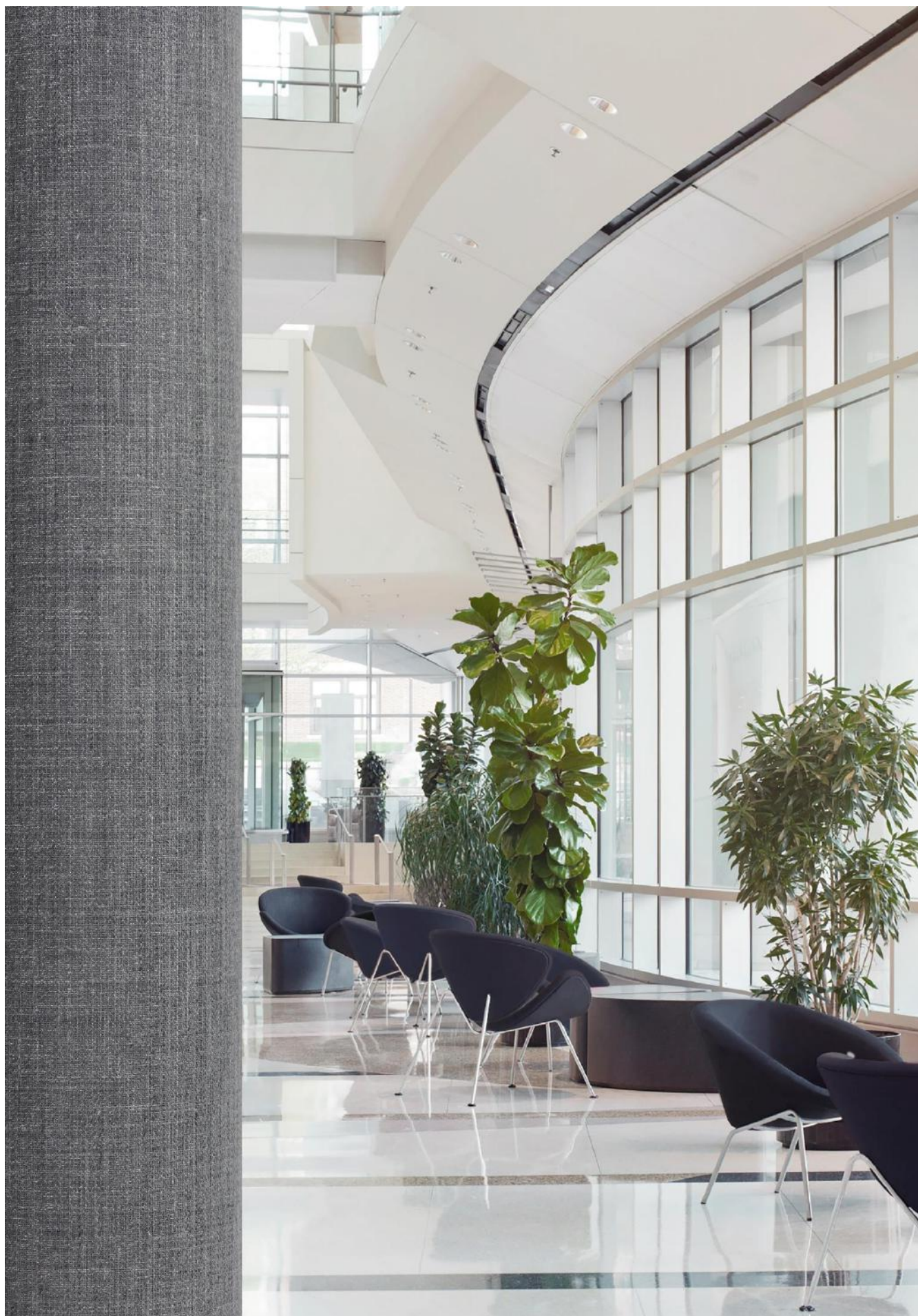
68-2203



68-2204

**tapetex bv**  
Churchillaan 10, 5705 BK Helmond, The Netherlands  
(+31) 492 534690, info@tapetex.com, tapetex.com

**tapetex** wall materials



**SPECIFICATION** : **ZARALIN 68-2200/-2204**  
Collection : 5 colours from Tapetex 68-Linen

### **Physical properties**

---

Surface Composition : 100% Linen, flat woven and yarn dyed.  
Backing : Paper backing of 70% woodpulp reinforced with 30% polyester.  
Width : 137 cm = 54"  
Weight : Approx. 400 gr/lm = 12.9 oz/lyd  
Thickness : Approx. 0.60 mm  
Hanging : Random.  
Precision trimmed for butt-joining by professional paper hangers.  
Installation advice supplied with every roll.  
Adhesive : Adhesive Tapetex PRO-1 or similar premixed heavy duty, clear vinyl adhesive, suitable for textile wallcovering.  
Variation : There can be a variation between sample material and finished product. Stock cuttings are available for approval.

**Performance** : See detailed results on our website.

---

Surface finish : A stain repellent finish prevents waterbased splashes penetrating and staining the material.  
Periodic vacuuming is recommended to prevent dust from building up on the materials surface.  
Lightfastness : Test result as per ISO 105-B02:2014, Heraeus original Hanau Xenotest.  
LRV values : Testing as per BS 8493:2008+A1:2010, Datacolor DC500.  
Fire rating : ASTM E84 Class 1 or A and EUROCLASS (B s1 d0).  
Permeability rating : Test result 55.3 as per ASTM E96-12, Method B, Water Vapor Transmission.  
Indoor air quality : ASTM D6196, D5197 and D5116, Environmental Chamber Test.  
The testing followed UL 2821 "Greenguard Certification Program Method for Measuring and Evaluating Chemical Emissions".  
REACH SVHC : Compliant as per Centexbel testing.  
DoP No. : (CPR 305/2011), DOP-CPR-01

### **Sustainability**

---

Linen is made from a plant, a 100% renewable natural resource.  
The backing is FSC certified, FSC A000531.  
In production, all energy sources are either green, wind or hydro based and all processes are waterbased. The products do not contain PVC, chlorine, plasticizers, heavy metals or harmful dyes.

### **Supply and packing**

---

Delivery from stock by the full linear meter or full linear yard. The average piece length of this quality is approx. 50 linear meter or 55 linear yards. However, as is common within the textile industry, it is not possible to establish a standard roll length. The wallcovering is reeled on to a cardboard core, wrapped in polyethylene and protective end caps are fixed. Each roll is then packed in individual cardboard boxes or tubes, which are also made out of FSC certified woodpulp.

### **Harmonized System as per the World Customs Organization and Origin**

---

Textile Wallcovering, paper backed: 5905.00. Made in the Netherlands.