



JULY 2020

# Yankalilla

REGIONAL NEWS

1ST TO 31ST JULY 2020

CIRCULATION 5000+ | FREE MONTHLY

Follow us on  
Facebook



**Local History**

**Club Fleurieu Open**

**Festival Fleurieu 2021**

**Books & Words Group**

**Your Letters & Opinions**

**Men's Shed Back To Work**

**Natural Resource Centre**

**Yankalilla Area School**

**Yankalilla Market**

**and more!**



Postage Paid  
Australia



**RAINBOW'S END  
DRIVING ACADEMY**  
**PH 0419 823 147**

Normanville Yankalilla Authorised and Accredited Driving Instructor Ray Barlow LOG BOOK & VORT Myponga Victor Harbor  
Serving this area for 33 years

**D & A HAMILTON  
CONSTRUCTIONS**

**General Builder, Carpenter & Iron Worker  
Specialising in**

- Single & Upper Storey Extensions
- Bathroom Renovations

**HIA Award Winning Builder**

Phone: 8557 4563  
Fax: 8556 3970  
Mobile: 0411 866 242 Lic.No. BLD51869



**ILD Drive** Contact Ian  
0408 634 269  
ian@ildrive.com.au  
**Driving School** vort lessons  
7 days a week

**LOCAL TERMITE SPECIALISTS  
ALL PESTS MANAGED**

**Pre Construction Treatments**

**Bonney Pest Control**  
Call Bryan Anderson



- Locally Owned
- Services Guaranteed
- Free Quotes
- Fully Insured
- Est 1974

**0411 692 812 • 8552 3812**

**Prompt • Courteous • Professional**  
[bonneypestcontrol.com.au](http://bonneypestcontrol.com.au)

Cover photo: **Mum and baby in the frosty Myponga landscape.**  
Photo by Gillian Rayment.

Gillian & Colin Rayment,  
ph (08) 8383 6734; mob 0438 662 114  
PO Box 80, Clarendon SA 5157  
[www.wingsandwildlifephotography.com.au](http://www.wingsandwildlifephotography.com.au)



Authors of  
"Vivonne Bay Blue"  
Producers of  
"Wings Above - Island Below"

Available from Yankalilla Visitor Information Centre  
& Normanville Natural Resource Centre



## Gallery 88

Gallery 88 is pleased to announce that it has opened its doors again for visitors after a few months closure due to Covid-19 restrictions. Run by the members of our local Art Collective, the gallery is Yankalilla & District's Community Art Gallery, located at 88 Main Street in Yankalilla.

We are a diverse group of enthusiastic art makers and present a large variety of artworks and artifacts, ranging from paintings in many styles and mediums, to textiles, fused glass objects, jewelry, woodwork and photography.

We welcome anybody who likes to whet their appetite for art again after a sober season to come in and enjoy some "non-distant" creations. You might even find a little artistic gift for yourself or a friend you are now allowed to visit.

Social distancing rules will still apply, but only for humans. You

can come close and personal to art and craft works since you have missed them for such a long time! Our featured artist for July will be Leo Ruf with a colourful display of his dynamic paintings. You will not want to miss this.

We are open Wednesday to Sunday and on all school and public holidays, from 11am to 4pm.

### For more information:

Marilyn Jelfs  
8558 2456 / 0416 150 413.  
Betty Wolf  
8598 4141 / 0428 778 123.



## Student Art Competition

### "WELCOME - We Are One"

As part of Refugee Week 2020, we launched a project to raise awareness of the vulnerability of Refugees settling in our country. This has been heightened by the impact of Covid-19. We are launching a Visual Art Event that will culminate in an exhibition of students' art based on the theme "Welcome - We Are One" on the Saturday of the October long weekend.

Local schools have been invited to participate in this event to enhance diversity and equality in our community. Southern Fleurieu students are invited to present a painting, drawing or sculpture based on our theme.

We anticipate that most of the art work while initiated by the schools will be completed by the students at home and supported by their parents. The schools will display their efforts at the school and then

selected works will be forwarded to Yankalilla Showgrounds for a public Exhibition from 2pm Saturday 3rd October, normally our "Show Day".

Winners in 2 categories will receive cash prizes of \$200 and \$50 (a People's Choice vote will be conducted prior to the presentation adding \$50 to each category).

Rebekha Sharkie will announce the winning pieces at 4pm and present the prizes and certificates to winners.

This will be an exciting public event and trust that locals and visitors will enjoy the opportunity to view works by our young artists.

Enquiries: Phone **0438 198 819** or email:

[refugeefleurieu@gmail.com](mailto:refugeefleurieu@gmail.com)



**MATT JAMES** PLUMBING + GASFITTING

0448 693 638  
[mattjamesplumbing@live.com](mailto:mattjamesplumbing@live.com)

PO Box 2121  
Normanville SA 5204  
Lic. PGE 251526

# ELECTRICIAN

All types of Electrical Work,  
No job too small FREE QUOTES

**Pensioner Discount**

Call Rob - Mobile: 0411 729 565  
robthesparky50@gmail.com

[Electrical License no: PGE153211]

## Water improvements for Worrina Cove

2 June 2020

**S**A Water is continuing to improve management of the Worrina Cove drinking water network and quality of water supplied to local customers, through recent upgrades at the local treatment plant and the Worrina Cove Reservoir.

Operation and maintenance of the network which services the town of Worrina Cove, along with the wider District Council of Yankalilla region's wastewater network, transitioned from the local council to SA Water in July 2019.

SA Water's General Manager of Asset Operations and Delivery Mark Gobbie said additional treatment infrastructure is now operating within the Worrina Cove Water Treatment Plant, which will help to produce better quality water.

"A specialised aerator will assist in improving the taste and smell of our local customers' tap water and our compliance with the Australian Drinking Water Guidelines," Mark said.

"It works by removing chlorine disinfection by-products from the water, which are created by the interaction of chlorine with organic matter in the reservoir."

In addition to this, a newly-installed pontoon anchored to the edge of the Worrina Cove Reservoir will enable a safer and more efficient way of loading and unloading equipment and supplies from a small boat, which is used to carry out any monitoring, testing or treatment activities.

"The reservoir has a perimeter of around 1.5 kilometres, so a simple look from the water's edge doesn't give a detailed picture of how the body of water is behaving or whether there are any localised issues such as algae," Mark said.

"The presence of algae in open water sources is a common event during warmer weather when conditions are favourable for growth, but can also

occur as a result of an excess of nutrients entering the water through rain runoff or bank erosion.

"Algal blooms cause a naturally-occurring compound called geosmin, which can affect water aesthetics, but is harmless to human health. The Worrina Cove Reservoir is no exception to this water quality challenge.

"A method routinely used across Australia to treat algae is the targeted dosing of activated carbon at a water treatment facility, which adsorbs the geosmin in the water and then the normal treatment process removes the carbon.

"We don't currently have the ability to carbon dose at the Worrina Cove Water Treatment Plant, but construction of specialised equipment which will assist with this activity is underway. At SA Water we provide our state's most important and essential service – the delivery of safe, clean water and dependable sewerage services. We are a corporation owned by the people of South Australia, and are committed to providing our 1.7 million customers with world class water services that represent excellent value. We invest \$300 million a year in sustaining and enhancing our state-wide network, to ensure it continues to play an integral role in South Australia's social and economic development.

"We acknowledge there's still a way to go to bringing the aesthetic quality of the water to an acceptable standard for local residents and businesses, but I assure you the water remains safe to drink, and we are committed to improving supply in a timely and cost-efficient way.

"We will continue updating the community as further investigations and improvement work progresses, with information sheets currently included with each quarterly water bill sent to local SA Water customers."



# WALLIS ELECTRICAL

Electrical Licence: PGE143260

- Internal/External Domestic Electrical
- Data/Phone & TV point installation
- Safety Switches & Smoke Detectors
- Holiday/Established Homes, New Builds

Your local electrician based in  
**Second Valley** servicing...

**Rob Wallis**  
**0417 822 442**  
rjwallis@bigpond.com.au

Second Valley Myponga  
Normanville Rapid Bay  
Yankalilla Delamere  
Carrickalinga Cape Jervis

## PRICE ROBERTS & CO

Chartered Accountants

Tax Agents and Business Advisors

### Specialising in:

- Small Business Management & Taxation
- Bookkeeping & BAS
- Business Benchmarking & Analysis
- Taxation Consulting
- Superannuation & Self Managed Funds

**Yankalilla, 83 Main Road**

**Victor Harbor, 34 Victoria Street**

**Telephone: 8552 2822**

Phone appointments only during Covid19 restrictions

### Inside this issue...

<b>Arts, Entertainment, Food, Music:</b>	Mission Australia Survey	26
Australian Decorative & Fine Arts Society (ADFAS) Fleurieu	Southern Fleurieu Family Practice	27
Books and Words Group	We've always been wearing masks	30
Club Fleurieu	<b>Heritage &amp; History</b>	
Festival Fleurieu 2021	100th birthday of truck that led	led
Gallery 88	Yankalilla Show parade	28
Radio - Fleurieu FM	Historical Society: Local History	24
Radio - Radio 876 Normanville	<b>The Rest</b>	
Southbound Diner	Advertisers Index	4
Through the lens competition	Animal & Bird Rescue services	25
Yankalilla Acoustic Music (YAM)	Bendigo Bank for Yankalilla	5
Yankalilla Market	Classified Adverts	18
Yankalilla Show News	Cover photo details	2
<b>Clubs, Groups</b>	Editors notes	4
Fleurieu Refugee Support Group	Jokes & Quotes, etc	10
Men's Shed - Yankalilla	Letters & Opinions	13-14
Probus - Yankalilla Ladies	Natural Resource Centre - Normanville	22-23
Red Cross - Yankalilla	Rox Rosey - Click go the needles	8
Yankalilla & District Lions Club	SA Water	3
<b>Health, Wellbeing</b>	School - Yankalilla Area School	11
Carbon Monoxide Poison Warning	Sea grass loss from Yankalilla Bay	31
Greater Fleurieu Medical Centre		29

## INMAN VALLEY GARAGE

Since 1957

**Main Road, Inman Valley - ph 8558 8255**

- ★ Servicing and mechanical repairs to tractors, trucks and cars
- ★ Welding and repairs to agricultural machinery
- ★ Steel work
- ★ Repairs to trailers and horse floats
- ★ We can fit brake kits to your trailer
- ★ Front end loader repairs
- ★ Bail spike, frames made to order
- ★ Tractor clutches and all tractor repairs
- ★ 4WD gear box and engine repairs

## INMAN VALLEY PARTS SHOP

Parts and Supplies



- ★ BEPCO Tractor Parts
- ★ BARE CO Mower Blades/Rake Tynes
- ★ CASTROL Oils
- ★ RYCO Filters (large range)
- ★ BENDIX Brakes
- ★ CENTURY Batteries
- ★ BOSCH Batteries
- ★ Ag Tyres
- ★ 3 Point Linkage Parts
- ★ Bale Spikes, inserts, build a frame
- ★ TRACTOR RESTORATION (type, repaint, decals)

Contact Darryl  
**8558 8255**  
Fax: 8558 8335

The Yankalilla Regional News welcomes your items of local interest, letters, news, events and meetings.

Advertising rates in The Yankalilla Regional News are very competitive. Your advertisement will reach more than **5,100 households** in the Southern Fleurieu every month.

This makes The Yankalilla Regional News the most effective way to advertise services and products throughout the Fleurieu Coast.

The Yankalilla Regional News is an independent publication produced and distributed by Paul Jelfs

Editor: Paul Jelfs

Office phone: 8558 3201

Mobile 0409 723 341

PO Box 2110, Normanville SA 5204

E-mail: [editor@yrn.com.au](mailto:editor@yrn.com.au)

ABN 99 763 581 346

Design and layout by Paul Jelfs

Printed By...Mercury Printing  
Unit 1, 20 Ellemsea Circuit, Lonsdale  
Ph 8382 4466 - Fax 8382 2166

## ADVERTISING RATES

Size (width x height)	B & W	Colour
<b>Classified Ads</b>	\$5/Line	N/A
1/32P 4.5x3.1cm	\$28	\$45
1/24P 6.3x3.1cm	\$35	\$61
1/16P 4.5x6.5cm or 9.5x3.1cm	\$50	\$91
1/12P 6.3x6.5	\$70	\$118
3/32P 14.5x3.1cm	\$79	\$129
1/9P 6.3x8.8	\$85	\$153
1/8P 9.5x6.5 or 4.5x13.4 or 19.4x3.1	\$99	\$168
1/6P 6.3x13.4 or 9.5x8.8	\$120	\$207
3/16P 4.5x20.4 or 14.5x6.5	\$139	\$238
2/9P 6.3x18 or 12.85x8.8	\$163	\$279
1/4P 9.5x13.4 or 19.4x6.5 or 6.3x20.3	\$183	\$320
1/3P 19.4x8.8 or 12.85x13.4 or 6.3x27.3	\$244	\$416
3/8P 9.5x20.4	\$266	\$474
4/9P 12.85x18	\$307	\$555
1/2P 19.4x13.4 or 9.5x27.3	\$364	\$620
9/16P 14.5x20.4	\$398	\$694
2/3P 19.4x18 or 12.85x27.3	\$475	\$819
3/4P 19.4x20.4	\$530	\$929
Full Page 19.4x27.3	\$683	\$1223
Editorial text	poa	Poa
Advertorial text	Poa	Poa

Reserve a position for your advert.  
(example: top of page 5) 1/4 page - \$28.  
1/2 page - \$38. 1 page - \$48.

Back Page  
full-colour  
1/2p \$830  
1p \$1550

Flyers and brochures etc. can be inserted for \$770

The official due date for each Newsletter is the 15th of the month. The Christmas and New Year issues each cover 1.5 months.



**COPYRIGHT** © The Yankalilla Regional News 1970-2020. Reproduction of any part of this magazine is prohibited unless permission is given by the copyright owner. The Yankalilla Regional News does not endorse, accept responsibility for, or necessarily agree with items or advertisements submitted for publication by others. Items submitted may be subjected to editing at the discretion of the editors.

## Editor's Comments

Hello Readers,  
The world hasn't yet finished with the Covid-19 pandemic and the resultant economic crisis but it has already started on the next one, being the black lives matter movement. Haven't we all had enough crises yet? Humans being humans, I am now looking out for the next one! Will this planet survive our ongoing assault on everything or will it self-destruct as some kind of revenge on our species. Time will tell.

I am pleased to report that the dispute between the YRN and the Yankalilla Council has been resolved, so we can now move forward. However, the 'In The Loop' is not returning in the near future as Council are intent on doing their own thing, independently.

School holidays are happening this month but the only holiday we can have is pretty much within our own state. The border restrictions may not be lifted for a while as Victoria has had a bit of a covid-19 spike, airlines are still limited and no one really knows how long this will go on for.

So, where does that leave us? Supporting the local state economy in general and our local area in particular. Shop local, support local business and help SA recover for the foreseeable future. At least we are in a well managed state and don't have too much to worry about as long as we stay

sensible and follow the health related directions that we are now fairly used to.

Locally, we are seeing a bit of a tourism boost and our cafes, businesses, driving instructors, hotels, entertainment and many other things are starting to get back to almost normal conditions. Well, if you use your imagination, it appears almost normal. The best we can expect for the foreseeable future.

Until next issue...

Cheers,  
Paul Jelfs, Editor

## AI & Kerry's Fish Sales Local & South Australian Fish

we also sell Prawns and Oysters

20 Flinders Drive, Cape Jervis  
Open when the sign is out or ring us on

AI's Mobile 0427 713 520

Kerry's Mobile 0401 482 899

Follow us on Facebook

AI & Kerry's Fish Sales



Next Issue:  
August 2020  
Deadline:  
15th July 2020

## Advertiser's Index

### Accounting/Financial/Tax

- Bendigo Bank ..... 5
- Price Roberts & Co. .... 3

### Air Conditioning, Communications, Computers, Electrical, Refrigeration, Solar

- Derribong Electric ..... 19
- Electric Ideas ..... 13
- Fleurieu Refrigeration ..... 19
- Normally Open P/L - Peter Bell ..... 21
- Rob the Sparky ..... 3
- Shannon Hamilton Computer Services ..... 18
- Simple Simon TV ..... 6
- South Coast Electrical ..... 12
- Stove Installation & Repairs ..... 18
- Wallis Electrical ..... 3

### Animals, Pets, Livestock, Vets

- Koala Rescue ..... 25
- Native Animal Rescue ..... 25
- Native Bird Rescue ..... 25
- Shaggy Business ..... 28
- Strutt'n in Style ..... 25
- Yankalilla Veterinary Clinic ..... 24

### Automotive

- Inman Valley Garage ..... 3

### Blinds, Curtains, Doors, Windows

- Able Blinds ..... 7
- Window & Door Renovations ..... 19

### Builder, Carpenter, Cabinet Maker, Construction, Handyman, Property Maintenance

- Clark Solid Plastering ..... 17
- D & A Hamilton Constructions ..... 2
- Matrix Joinery - Jeff Long ..... 17
- Michael's Creative Creations ..... 13
- Quantum Build ..... 21
- Rob Wheatley Construction Stonemason P/L ..... 17
- Scope Roofing & Guttering ..... 19
- Shed Boss ..... 19
- South Coast Constructions ..... 9
- Southern Fleurieu Home Maintenance ..... 19
- Southern Ocean Constructions ..... 17
- Steve Smith Carpenter/Handyman ..... 19
- Yankalilla Ceilings ..... 17
- Carpet Cleaning - Impact Cleaning ..... 32
- Carpet Cleaning - Ken Serrels Carpet & Window ..... 21
- Cleaning - Ash Baker Cleaning Services ..... 16
- Cleaning - C & D's Domestic Cleaning ..... 21
- Conveyancer - Sea to City (Amy Hunt) ..... 13

### Couriers/Removals/Transport/Towing

- Fleurieu Peninsula & KI Removals ..... 19
- Peninsula Parcel Co. .... 15
- Shuttle Bus (The Backyard Universe) ..... 14

### Driving Instructors

- ILDrive Driving School ..... 2
- Rainbow's End Driving Academy ..... 2

### Earthmoving/Excavating

- Baldock Earthmoving ..... 14
- Haywood Excavating ..... 13

### Employment

- Naiko Retreat ..... 6

### Entertainment/Food/Wine

- Adelaide Fruit & Veg Delivery ..... 8
- Min Palace ..... 4
- AI & Kerry's Fish Sales ..... 4
- Caffe On Bungala ..... 8
- Fleurieu Coast Event & Party Hire ..... 5
- Guided Tours of Our Night Skies (TBU) ..... 13
- Little Known Boutique Cafe ..... 8
- Min Palace ..... 8
- Mrs Wallis' Chutneys, Relishes & Pastes ..... 8
- Southbound Diner ..... 6
- Yankalilla Craft & Produce Market ..... 8

### Fencing

- AB Rural Fencing Pty Ltd ..... 19
- DSH Rural & Landscape Fencing ..... 30
- Floors - Timber floor sanding/polishing ..... 18

### Funeral Services

- Simplicity Funerals Victor Harbor ..... 32

### Gardening/Landscaping

- Forest Floor Enterprises ..... 32
- Gums n Roses Gardening Service ..... 21
- Hay For Sale (Bartlett) ..... 25
- Lawn Mowing - Buddy ..... 7
- O'Brien Gardens/Windows ..... 14, 18
- Ochre Landscapes ..... 9
- Spencer's Lawn Mowing & Garden Maintenance ..... 17
- Tree Felling & Lopping (Geoff Bromilow) ..... 29
- Yankalilla Landscaping & Gardening Centre ..... 17

### Hair, Nails & Beauty

- Flitz ..... 25
- Vision Hair & Beauty ..... 26

### Health, Fitness, Home Care/Assistance, Massage, Medical, Wellbeing, Yoga

- Acupuncture - Ka Che Herman Lum ..... 29
- Encounter Bay Dental ..... 28
- Greater Fleurieu Medical Centre ..... 29
- Normanville Central Physiotherapy ..... 29
- Normanville Dental Clinic ..... 25

- Normanville Pharmacy ..... 26
- Normanville Physiotherapy Clinic ..... 26
- Normanville Remedial Massage: Robyn Cleggett ..... 25
- Siam Sea Change ..... 28
- Southern Fleurieu Family Practice ..... 27
- Yankalilla & Myponga Family Pharmacy ..... 26
- Yankalilla Karate Club ..... 12

### Legal Services

- Bartel & Hall Barristers & Solicitors ..... 32

### Lions Club of Yankalilla

- Locksmiths on the Fleurieu ..... 16

### Painters

- Matt's Professional Painting/Decorating Service ..... 21

### Pest Control

- Bonney Pet Control ..... 2
- Ogay Pest Control ..... 17

### Plumbers/Septic Services

- Ben McKenzie Plumbing & Gas ..... 9
- Cape Jervis Plumbing ..... 18
- David Jansen Plumbing ..... 17
- Matt James Plumbing & Gasfitting ..... 2
- South Coast Liquid Waste ..... 18
- Southern Fleurieu Plumbing ..... 21
- Yankalilla Plumbing & Gasfitting - Mark Oliver ..... 24

### Printing - Mercury Printing Services

- Pumps - Fleurieu Pumps ..... 30
- Radio - Fleurieu FM ..... 12
- Radio - Radio 876 Normanville ..... 12
- Real Estate
- Vivid Property Company ..... 5

### Rebekha Sharkie MP, Federal Member for Mayo

- Recycling - South Coast Bottle & Can Co ..... 6, 22

### Retailers, Shops, Wholesales, other

- Book Exchange & 2nd Hand, Yankalilla ..... 8
- Milre 10 - Normanville ..... 16
- Normanville Natural Resource Centre ..... 22, 23
- Yankalilla Trading Store ..... 8

### Schools

- Investigator College ..... 10

### Steel Fabrication & Welding

- General Fabrication - Kai Hillen ..... 20

### Storage - Yankalilla/Normanville Self Storage

- Tiling/Tilers - TLC Tiling (Leigh) ..... 18
- Total Recovery Upholsterers ..... 15
- Water - Water Man Cartage ..... 19
- Window Cleaning - Ken Serrels Carpet & Window ..... 21



NORMANVILLE

YANKALLILLA

CARRICKALINGA

FLEURIEU

The property market is getting on with it and so are we. Open Inspections are back on – with safety in place. Call us for a chat if you are considering selling or buying now or in the future.



KATE HILL: 0418 803 319

TRISH JOHNSON: 0414 826 978

www.VividPropertyCo.com.au

73 St Andrews Blvd, Normanville

Find us on

RLA 274744

## Keeping up in a changing world and giving back to our communities

In ever-changing times, we have been forced to look at how we go about our day to day lives - whether it be going to the doctor, educating our children, buying groceries or even doing our banking.

This has been truly a unique experience – a once in a lifetime experience. We've seen communities rallying together to support each other like all good communities do. We all know local businesses have never needed our support more than they do now. Despite all the change that we, as Australians have endured, we have responded to it so well.

In my business, we have seen a rapid transformation in how our customers are transacting. We have seen a positive spike in customers changing from in-branch transactional banking with their passbooks to using EFTPOS and other digital means to access their funds, realising it is not hard to transition and even makes life a little easier and in these times, a little safer.

We have supported many Fleurieu businesses in their "new normal" and have heard some fantastic stories about how these great businesses have used this time to restructure their business models and reopen with a different service proposition that will allow them to grow and become more sustainable and robust for the future

It has been very clear that across our four locations in the Fleurieu we have been able to continue to provide a high level of customer service in more ways than traditional "cash transactional" banking. With customer preferences continuing to change we are servicing our customer in a variety of ways.

As our customers increasingly choose between traditional and new ways banking, we have identified a need for a more mobile team that will allow us to work alongside our customers and the community, all the while still supporting those that like to come in and see us.

We would love to talk to you more about how we can support your banking needs and make life easier for you beyond COVID-19, why not give us a call to have a chat and let us help you with your new reality.

**To make an appointment please give one of our friendly staff a call or email:**

**Jordan Sampson –**  
[jordan.sampson@bendigoadelaide.com.au](mailto:jordan.sampson@bendigoadelaide.com.au)  
or call on  
**(08) 8557 8166**

**David Radley –**  
[david.radley@bendigoadelaide.com.au](mailto:david.radley@bendigoadelaide.com.au)  
or call on  
**0402 119 272**

# fleurieu Coast Event + Party hire

## make it one to remember



### Save your date

We provide a quality range of party hire equipment to suit any occasion

**Micro-Weddings & Gatherings**

\*\*\*\*Packages designed for your event\*\*\*\*

**!! School Holiday Specials !!**

Traditional Indoor & Outdoor Games  
Popcorn Machine (\$50 hire for 2 nights)

### SHOP OPENING TIMES

(while Covid-19 restrictions apply)

Friday & Saturday 10am – 2pm

Sunday & Public holidays 10am – 1pm

\*\*\*\***Online Bookings and Personal appointments are available any time\*\*\*\***

Shop 6, 79 Main Road, Normanville

**0474 360 230**

[events@fceventpartyhire.com.au](mailto:events@fceventpartyhire.com.au)  
[www.fceventpartyhire.com.au](http://www.fceventpartyhire.com.au)



Supporting the Fleurieu Community

# We're here for you

Our branch remains open to help see you through COVID-19.

Call us to make an appointment.





# Paying CA\$H for your scrap steel

3 Bartlett Place, Yankalilla - Ph 0419 843 244

Now open Mon-Fri 9am-1pm, Sat 9am-noon

Other depots at Victor Harbor & Goolwa

[www.southcoastrecycle.com.au](http://www.southcoastrecycle.com.au)



## Club Fleurieu

### We are back!

All of us at Club Fleurieu are delighted to be back enjoying meals and many of our usual activities, while observing the restrictions still in place.

Our first event was the Club Barbecue on Thursday 11 June. Everyone was so happy to get together for a relaxed BBQ lunch. When Louise welcomed everybody back a resounding cheer went up!

Mid-month Happy Hour took place the following evening. At present shared cheese platters are not permitted, so the catering committee decided to serve Barramundi Burgers & wedges. Dessert of Pear and Chocolate Danish with icecream followed. Once again, this was a most enjoyable event with lots of chatting and catching up going on!

Two more social events are planned for June. In the week following this issue's deadline our monthly Club Lunch will return, followed by another Happy Hour on the last Friday of the month.

The Op Shop is well and truly back in business and had a particularly successful period of trading over the June long weekend. Our Club Office has also re-opened. Hours are 10.00am-12 noon each Wednesday.

Some of our regular weekly activities have now resumed. This week it was great to see members enjoying quilting, line dancing and mosaics, with social distancing being observed. The Garden Shed group are continuing their great efforts in the orchard. More activities will start up again in the coming weeks.

### Diary Dates for July

**Thursday 9 July 12 .30pm**  
Club Barbecue

**Friday 10 July 5.30pm**  
Mid-month Happy Hour with meal

**Wednesday 15 July 12 noon**  
Club Lunch

**Friday 31 July 5.30pm**  
End of month Happy Hour with meal

For details of meal prices and menus, please call in any time to check the noticeboard in our Club foyer. Feel free to take a newsletter while you're there. Newsletters are also available in the shopping arcade at Normanville.



### Yankalilla Council Grant

The Club Management Committee would like to thank Yankalilla Council for the recent grant we received, for upgrading of lighting. Work was undertaken during the closure period, and members have been very impressed with the new look in the hall!

140 Main South Road Yankalilla SA  
Phone 08 85582053 Mobile 0477111315  
Email [yankover50s@gmail.com](mailto:yankover50s@gmail.com)  
Website [www.clubfleurieu.com](http://www.clubfleurieu.com)

*Pictured: Members enjoying Happy Hour*



## CLEANERS WANTED

NAIKO RETREAT is a Luxury 3 Bedroom Retreat situated at Deep Creek. It is the first and only self-catered accommodation establishment in South Australia to be awarded 5 Star Accreditation.

The Site Manager is responsible for the cleaning of the retreat and during peak periods requires the support of casual cleaners.

### Interested persons should:

- Have a Police Clearance
- Have a Driver's Licence
- Be available 7 days a week including public holidays and at short notice

For more information, please contact the Site Manager, Maria Purvis, on **0439 575 822** or by email: [info@naikoretreat.com.au](mailto:info@naikoretreat.com.au)

**Simple Simon TV**

- TV Wall Mounting
- Smart TV Setup
- HD Antennas and TV Points
- Home Theatre Installation
- Telephone & Data
- VAST Satellite Installation

**0427 746 753**  
[www.simplesimontv.com](http://www.simplesimontv.com)

## Southbound Diner

Julz and the staff at Southbound Diner would like to thank everyone who supported them through the difficult Covid-19 period. We appreciated it immensely! We look forward to seeing all of our regulars again now that restrictions are lifting.



## SOUTHBOUND DINER



DINE IN OR TAKE AWAY  
**8558 2858**

10/89 Main St,  
Normanville

### Winter Hours:

**Wed to Sunday:**  
8:30am-3:00pm

**Fri & Sat nights:**  
5:00pm-8:00pm

# ABLEblinds

VISIT OUR SHOWROOM - 207 Aldinga Beach Rd, Aldinga Beach

PHONE (08) 85566988

Inside Blinds - Plantation Shutters - Cellular Blinds - Day / Night Rollers  
Outdoor and Cafe Blinds - Awnings - Fly and Security Doors  
Roller Shutters and Curtains



WE NOW OFFER AFFORDABLE FINANCE

Check us out online: [www.ableblinds.com.au](http://www.ableblinds.com.au)

## Tale of a Wave Energy Generator

### The beginning or the end?

Standing in the car park on the foreshore of Normanville Beach in March 2014, discussing the prospects for sailing that day, I think, someone points to a large vessel off shore moving slowly toward Carrickalinga. 'What the hell is that', someone says and another replies 'some sort of electricity generator they were towing South, but there seem to be problems'. Soon after a note appears on a Government website:

28 March 2014

*The Department of Planning, Transport and Infrastructure (DPTI) advises that the Oceanlinx Ltd Wave Energy Generator, currently stranded approximately one kilometre off Carrickalinga Beach in the Encounter Marine Park, is posing a significant safety risk.*

### And thus the saga began...

I am writing this because I recently talked to someone who has lived at Carrickalinga for a few years and he had no idea about why this structure was off shore. So, I gave a bit of my knowledge, having been there the day it sank, but decided to investigate the story a bit more.

I did know that many people from the town of Carrickalinga had been up in arms about this violation of their pristine environment but the fuss seemed to have settled somewhat, though there are many who will become very passionate about this. Initially, there were marker buoys surrounding the sunken structure and signage warning of safety issues. But, the buoys disappeared in wild weather I suppose and the signs are almost impossible to read, marred as they are with bird droppings.

I know about the state of the structure since I sail around it once a year or more. One of our Sailing Club members had the bright idea of a yearly 'Wave Energy Generator Folly Race' (I made the name up to aid accuracy as it is colloquially called 'The Wave Generator Race'). The race is held on Easter Sunday morning every year and is a handicapped race that adjusts for the speed of individual boats in the fleet. A trophy that has developed over the years is a highly sought after, somewhat humorous, prize. Unfortunately, due to limitations on recreational activities because of COVID-19, we have missed this year, but I intend to get out there once restrictions are eased.

While this seems to be a wonderful renewable

energy technology, the implementation and engineering challenges are huge and the only two sites that have been trialled in Australia have led to structures off Port Kembla (NSW) and Carrickalinga (SA), both which ended up damaged and difficult if not impossible to effectively remove. The preferred option seems to be blowing the Carrickalinga version up but this will still leave much material off shore. The upside is that this could become a valuable fish breeding site and it seems clear from the boats that head out that way that there may already be benefits in that way. Certainly, the 200 x 200 metre exclusion zone that was originally mooted is not effective but I haven't heard of any untoward events out that way.

In reading about the WEG I, of course, came across criticisms about the waste of 'green' dollars. It seems that it is OK to pour billions into fossil fuel development, and huge mistakes and environmental impact are made there. But to try a promising idea that, as it turns out, is probably before its time and wastes millions is unacceptable. As I understand it, the future thrust of this type of energy generation is moving more to capturing the energy of ocean swells and tidal energy. The latter seems to be a really important direction as tidal activity is constant and predictable and, if the engineering and funding challenges can be overcome, low cost energy could flow (pardon the pun) for long periods once the investment was made.

Facing, as we do, the challenges of climate policy, and conflicting views on the causes of major weather and bushfire events, it seems critical that we do transition away from fossil fuels, using the German and other countries experiences of how to do that and keep people in work. Regardless of keeping people in work in energy industries, though, we do need to be mindful of how important tourism is in this country. Every piece of damage that we do to the environment reduces that income.

Even more so, as a global community, practices need to be changed and these practices affect us all apart from a few very isolated carbon neutral societies who have been following millennia old practices to maintain a balance between what is taken out and what we put into the land.

Here, I am talking about over consumption and the production of waste. Each person in a developed country produces mega waste and we now sell produce to third world countries so that they can produce mountains of this too. Some of the issues are huge. For example, it would seem that plastics play an important part in manufacturing and industry. It is great that these

materials can be so long lasting and resilient where needed. But, why does every item need to be shrink wrapped and why cannot packaging be more recyclable. And why do we need so much? The answer to these questions does seem to lay in the profit motive. The more people are encouraged to buy, the more profit can be made. In itself, making a profit is a good thing. All businesses need to do this in order to survive and employ people. But targets like a 10% profit per year does not even make mathematical much less environmental sense. And that CEOs of big companies are breaking the law if they do not maximise profits for their shareholders, regardless of environmental and social consequences, is just socially and environmental irresponsible.

The world has largely learned that radical socialist approaches are unworkable. Once an elite is created within any 'ism' there are abuses. What we haven't learned is that radical capitalistic approaches are untenable in the long term and lead to disenfranchisement and exploitation of the vulnerable. Wherever people are making 'money for jam' we have to question the societal implications.

Of course, these are not the concerns of many residents of Carrickalinga who see the remnants of the project as a blot on their beloved environment ('an eyesore of epic proportions') and have argued strongly that the approach being mooted at the moment will cost much money and leave the remainder of the structure just below the water level. There was quite a write up on this in the recent April Yankalilla Regional News and I won't try to summarise this here but it can be found at <https://yrn.com.au/> However, it is interesting that there has been activity on Facebook questioning spending any money on this as, according to the post I saw but cannot find now, it can hardly be seen from the shore. I guess an eyesore is in the view of the beholder.

Brian Matthews

*Taken from 'The Scribe' April 2020 with permission from Books & Words Group*

**Lawn Mowing**  
Need a quick mowing job?  
Call Buddy on  
**0427 590 000**

# Yankalilla Trading Store

87 Main Road, Yankalilla

**Buying and selling second hand furniture,**

**DVD's, Bric a Brac**

**EFTPOS now available**

*Open Mon, Thur, Fri, Sat, Sun 10am - 4pm*

Phone Robyn & Nigel on 8558 3804 or 0419 031 047

# Mrs Wallis' Chutneys, Relishes & Pastes

are available in Normanville at **A Birdie Told Me** and in Yankalilla at **The Little Cheese Room**

or online at

[mrswallischutney.com](http://mrswallischutney.com)

delivered free to your door within 20kms of the Normanville/Yankalilla area.

**LOVE LOCAL**



Website:

[mrswallischutney.com](http://mrswallischutney.com)

Email:

[mrswallischutney@yahoo.com](mailto:mrswallischutney@yahoo.com)

Mob: 0417 857 518

# Yankalilla Market

Craft, Produce, Collectables, Bric-a-Brac

**18th July**

**3rd Saturday each month 9am-1pm - Agricultural Hall Between Yankalilla & Normanville Stall Bookings Essential.**

**Stallholder enquiries:**

**Miriam 0490 344 150**

# Caffè on Bungala

**LICENSED CAFÉ**

## Coffee Garden

*(dog friendly)*

All-day breakfast fish & chips ready to go meals gluten free & vegetarian

Open 7:00am

Breakfast, Lunch

48 Main Road, Normanville

Dine In or Take Away

Closed Thursdays (except school holidays)

**MIN PALACE**  
CHINESE & THAI RESTAURANT  
Fully licensed

OPEN: Wed to Sun and public holidays  
Lunch Thursday-Sunday 11.30am-2.30pm. Dinner Wednesday-Sunday 5pm-Late  
Closed Monday & Tuesday (except holidays)

Due to Covid19 restrictions Limited Dine-In Available  
Phone Orders/Bookings  
**8558 2422**  
Take away - pick-up only  
Normanville Plaza  
Andrew Ave, Normanville

**Lunch Special \$12**

## Click go the needles by Rox Rosey

Well, it is that time of year again when the knitting needles come out of hibernation.

Scarves are the first item in this category.

Plenty of wool, a variety of colours so the choice of what to wear with different outfits is no problem at this

time of year!

I have been collecting as many balls from my stores as possible, which means they can be truly utilised into different and interesting items.

I was not fully aware of what stores I actually had stashed away, so the imagination can be truly tested.

Many colours to be knitted making the finished articles something different and not so boring!

I normally find that the knitting eventually ends up as usual being scarves that challenge the cold winters and provide warmth where if the neck is covered it seems one is warm all over. Nothing compares with a lovely warm jumper or jacket that keeps the upper body warm all the time.

When sorting out my stock of wools, it was a surprise to me just how much

# Yankalilla Second Hand & Book Exchange

**Open Daily 10am - 4pm**

Closed Tuesdays

**92 Main Street, Yankalilla**

**8558 2835**

Like us on

Facebook & Insta

L & E Fretwell

there had been squirrelled away in the knitting box.

A hand knitted woollen jumper or jacket will always be cosy, especially if one has done the making themselves.

Woollen makes the article more cosy than some of the synthetic substitutes. Therefore as this short article nears the end, it is expected that my woollen clothing is taken care of, it is of some pride that it is all hand made. So for all those knitters, I hope you have gathered some colourful threads to satisfy your eager preparations.



- adelaide -

## FRUIT & VEGETABLE DELIVERY

**DELIVERY EVERY THURSDAY TO YANKALILLA REGION**

**Delivering fresh fruit and vegetables direct from the Adelaide Central Markets**



Order online at

[www.adelaidefruitandvegetabledelivery.com](http://www.adelaidefruitandvegetabledelivery.com)



Brendan: 0466 620 001



**WE'RE BACK**

**OPEN 6 Days a week**

Monday, Tuesday, Wednesday & Friday 7.30am-2.30pm  
Saturday & Sunday 8.30am-2.30pm Thursdays CLOSED

*We have some new opening hours and you might see the café having a facelift over the next couple of weeks.*

*Winter Soups will be available in July to keep you warm and a new face in our kitchen will*

*keep you nice and full for breakfast and lunch. ☺ Keep up to date with all the new things happening in the café by following us on Facebook or Instagram.*

facebook Instagram

**84 Main Street, Yankalilla**

**CAFÉ • COFFEE • TREATS • TAKEAWAY**

**BURNISH**  
UNIQUE HANDCRAFTED  
FURNITURE & SCULPTURE

Crafted using reclaimed timber and steel  
Check website for current stock  
Commissions welcome

www.burnishfurniture.com  
Insta burnishfurniture

Nigel Ransom p. 0421 353 367

Design | Paving | Retaining  
Irrigation | Lawns | Plants  
Decks | Custom Fencing



www.ochrelandscapes.com.au  
Insta ochre\_landscapes

## Australian Decorative And Fine Arts Society Fleurieu

In hibernation but not quite comatose! After a brilliant first lecture for 2020 given by Charles Harris presenting "Romancing the Rails: British Railway posters", then the Covid-19 pandemic lock down, ADFAS Fleurieu membership has enjoyed a series of fascinating online lectures over the past three months including "Jane Austen: Her Life and Works", "The Beginning of Moorish Architecture: Experiencing and Understanding

the Exotic" and a lecture on JMW Turner, one of Britain's most famous painters famed for his atmospheric style, dramatic seascapes and amazing ability to capture the light, mists and colours of the Thames estuary.

Not only a well-presented lecture, but so informative both about Turner, his art and the production of the new polymer 20 Pound note featuring Turner's most famous painting the Fighting Temeraire – a

tribute to the ship HMS Temeraire which played a role in Nelson's victory at Trafalgar in 1805. A quote taken from a lecture Turner gave on painting in 1818, "Light is therefore colour", also appears on the note. The 20 Pound note bearing Turner's signature was launched in the UK on 02/02/2020.

ADFAS Fleurieu also obtained a wonderful lecture on Australian Art. The colours and images were superb and many of the represented artists familiar, including Hans Heysen.

Whilst SA's borders reopened (partially) on June 16th, unfortunately the ADFAS Fleurieu

overseas lecturers expected for July, August and September will not be able to fly into Australia. We hope that we will be able to engage Australian lecturers later this year and look forward to a new and exciting program for 2021. In the meantime, ADFAS Fleurieu will continue to offer its membership online lectures given by experts in their fields, curators of galleries, academics or professionals who have spoken and written widely on their subject.

For more information visit:  
[www.adfas.org.au](http://www.adfas.org.au)

## BEN MCKENZIE PLUMBING AND GAS

Mob 0419 827 045

OFFICE – BEC

8558 8184

0406 656 248

- Hot Water Services and Septics
- Hot and Cold Water
- Roofing and Gutters
- Rainwater Tanks
- General Maintenance
- Storm Water
- Blocked Drains



Use your  
HomeBuilder  
Grant

BUILDING A LIFESTYLE  
**SOUTH COAST  
CONSTRUCTIONS**

Award-winning builders  
30+ years' experience  
In-house design team

Ask about our Lifestyle Collection,  
priced from just \$280,000

Office: 37 Victoria St, Victor Harbor | Phone 8552 4444

See more designs at [southcoastconstructions.com.au](http://southcoastconstructions.com.au)

# Festival Fleurieu

## It's News!!

**F**estival Fleurieu, the Yankalilla District biennial community festival is planned for April 2021. The festival showcases the best of our region to create a greater awareness of the beauty and pristine environment and celebrates our strong community spirit. We have an abundance of talented and like-minded people who are proud artisans, authors, musicians, cooks, poets, historians, farmers, producers and business owners.

In pandemic-free times, the Festival Fleurieu Board would right now be working with this talented community, a planning coordinator and group, sponsors to organise events, to shape a program. Since March, the Board has been following the news of festivals, agricultural shows, musical events, theatre productions being cancelled or optimistically postponed.

It's been a strange time for all!

In the spirit of optimism and belief that a community festival can contribute positively to our District's future, the Board has held Zoom meetings (of course!) and discussed options for 2021. In this spirit we applied for grants to underwrite and support our festival for the marketing and development of a vibrant, innovative 2021 program, including its youth section. The latter has been identified in surveys as an element of *Festival Fleurieu* that will benefit from new energy and ideas, especially from young people.

Watch for news!

At the heart of *Festival Fleurieu* is our community. Do you have ideas, energy, a venue, questions? What role would you like to play during the festival? Go to the website: [www.festivalfleurieu.com.au](http://www.festivalfleurieu.com.au) to see past programs and photographs. Read the updated

Strategic Plan to know and understand what this award-winning festival is about. Send us an email to express your ideas or go to Facebook, *Festival Fleurieu*, to keep up with developments as they happen.

Be inspired!

You can support *Festival Fleurieu* and meet like-minded people by becoming an active member of Festival Fleurieu Friends (FFF). This group creates opportunities to meet between festivals; being a FFF has benefits in the festival itself. Membership continues until April 2021. Forms to join are on the website. Become a Festival Fleurieu Friend now!



## Yankalilla Ladies Probus Club Inc.

### Are We There Yet?

**A**nd I suppose you have all heard those words at some time in your life. Most likely coming from the back seat of a car and uttered by a young traveller tired of confinement and just ready to DO SOMETHING!

In lots of ways that's where we all are at the moment. Ready to do the somethings that were part of our active lives before coronavirus

isolation rules applied. Lunch or dinner at a local establishment with friends or neighbours, a game of bowls or an afternoon of cards or craft with a group of like-minded individuals. Well, we are getting close – so hang in there.

Our Club is hoping that by July – perhaps June if all the stars align – we will be able to have our usual meeting and catch up on all the news from ladies we have not seen in months. In the meantime, we are keeping in touch through the CCC Newsletter.

Last month I mentioned that a great sense of humour has emerged amongst our group and here are a few of the best funnies doing the rounds. Keep smiling and don't forget, if you

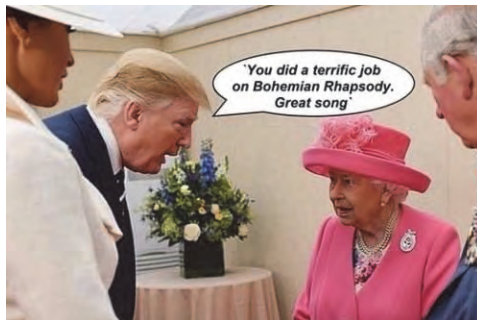
wish to join us as a visitor at a future meeting, please don't hesitate to contact either Avril or Lorraine (numbers below) and ask about our first confirmed meeting date. You will be warmly welcomed.

**Lorraine Felix – Publicity Officer**

**0409 099 867**

**Avril Clark – President**

**0407 492 071**



I just read a book on marriage that says treat your wife like you treated her on the first date.  
So after dinner tonight I'm dropping her off at her parents' house.



Native seedlings propagated at our Currency Creek EcoCentre



**Investigator COLLEGE**

**SCHOLARSHIPS 2021**

Open to all Year 6 - Year 11 students | Apply now | Applications close 28 August

[www.investigator.sa.edu.au/scholarships/](http://www.investigator.sa.edu.au/scholarships/)

**YOUR BEST SELF**

## National Reconciliation Week "In This Together"

Yankalilla Area School recognised National Reconciliation Week, from 27 May to 3 June, with a number of activities and events, working together to acknowledge, respect and understand Indigenous culture and history, providing a platform for healing and forgiveness into the future.

Many classes participated in activities such as; rock symbol painting, Buddy Artwork, Reconciliation Symbol designs and damper making and cooking. The Aboriginal Education Team worked with the Reception to Year 6 classes about what Reconciliation Week means and why it is important. During this time, they read the story "Stolen Girl" written by Trina Saffioti, discussed the meaning behind Reconciliation Week and the students created their own class definitions about what Reconciliation Week means to them. Here is what each year level group came up with:

- "Saying sorry for things that happened in the past that are mean" by Reception/Year 1 students
- "Apologising for things that have happened in the past and working together as a team to share the land" by Year 1/2 students
- "We feel bad for taking over this nation and treating Aboriginals unfairly. I hope you will be able to forgive us. Being sorry to the Indigenous people for things that happened in the past" by Year 3/4 students
- "Reconciliation Week is about saying sorry to Torres Strait Islander and Aboriginal people for disregarding them, their language, their culture and their land", "Standing together to say sorry", "To say sorry to the Indigenous people. To not judge people by their skin colour or beliefs." and "That everyone has the right to say what they believe and do what they want." by Year 5/6 students

Yankalilla Area School definitely know how to work together to acknowledge and respect our First Nation's people!



ATSI students cooking damper at the Indigenous Garden



Year 6 students participating in a rock symbol painting activity for National Reconciliation Week.

## New Outdoor Courts

The new courts at Yankalilla Area School were completed on Tuesday 2nd June, including new lines and equipment for basketball, netball, tennis and handball. Following a site inspection and official tick of approval by the Principal, Ms Christine Bell, Department for Education facilities staff and contractors, Ms Bell tested out the new basketball ring. On Thursday 4th June the Student Leaders conducted the official opening with a ribbon cutting ceremony just before lunch, and the new courts were enjoyed by students for the first time during lunch break.



Student Leaders cutting the ribbon for the opening of the new courts



## Farm News

Following a period of regeneration and redevelopment at "The Farm" at Yankalilla Area School the Agriculture program is up and running in full swing. All students, with the exception of Year 12's, have been having lessons in Agriculture and Horticulture, covering topics such as farm safety, vegetable production and composting, poultry, goat and pig husbandry and management, hay production, fruit tree maintenance and pruning, olive picking and olive oil production and wheat growth trials

The school held a whole school 'Olive Picking Day' in May and managed to get more oil than last year which is positive, as this growing season there was a lack of rain, so there were less olives and they were a lot smaller than usual. The olives will be used for olive oil production, which will be available for purchase very soon and has proven very popular in the past.

Each term fifty ISA Brown Layer Chicks will be available for sale at approximately 10 weeks of age. If you are interested in purchasing any please put your name on the list through the front office.

Next term the school will be participating in the Cows Create Careers Program for 5 weeks, and the Aquaculture program will run in conjunction with the Aquaponics set up.

New enterprises which will be utilised for educational purposes in the future when they are fully established are citrus orchard and passionfruit vines, blue gum plantation and the grape vines for viticulture. The school will be setting up a mini market stall at the front of the school for sales of fruit, vegetables, seedlings and plants when in season so keep an eye out.



Whole School Olive Picking Day

## Yankalilla Acoustic Music

YAM kicked off for this year on Saturday June 20, delayed by COVID-19 and with the required restrictions.

All in all, 16 attended, which is not an outrageously low number for midwinter with heavy rain and wind precluding an outside fire to gather around.

The next YAM, which is held on the 3rd Saturday of the month will be 18 July.

For a gold coin donation it is an excellent night out and the sessions have been well attended, varied, and highly enjoyable. A donation receptacle will be placed at the registration desk



near the entrance to the Supper Hall. Remember, if you are coming from a distance, camping is free. Contact Ian Main for advice.

If you require further information or clarification, contact Ian on 0439861001 or [ianmainevents@gmail.com](mailto:ianmainevents@gmail.com) or [yankacousticmusic@gmail.com](mailto:yankacousticmusic@gmail.com)



# South Coast Electrical

Call

**8558 3917**

or

**0407 671 712**

For **All Your Electrical Requirements**  
**24hr Emergency Service Available**  
**Air Conditioner & Refrigeration Advice**

**Appliance Testing**  
**Antenna Installation**

Leanne & Andrew Cole

PO Box 904

Normanville

Lic.No.PGE127759



## Yankalilla Karate Club

For training enquiries and details

Call **Sensei Strop**  
on: **0409 853 443**



# RADIO 87.6 NORMANVILLE

87.6 - FIRST ON YOUR FM DIAL



## Rebekha Sharkie MP

Federal Member for Mayo

*Proudly supporting the Yankalilla community*

We are here to help!

26 Hindmarsh Road  
Victor Harbor SA

Open Mon, Wed, Fri

**South Coast office  
now open!**

8398 5566 [www.rebekhasharkie.com.au](http://www.rebekhasharkie.com.au)

Authorised by R. Sharkie 1/72 Gawler Street Mount Barker SA 5251



## Want a Diverse Range of Music?

# Celebrating 28 Years!



## fleurieu fm

89.3 Victor Harbor • 94.7 Strathalbyn & Yankalilla

Fleurieu FM is celebrating **28 Years of Community Radio** in the Victor Harbor, Goolwa, Strathalbyn, Yankalilla, Normanville and surrounding areas.

If you like to be kept up to date with local community events. **Tune in.**

If you like a diverse range of music from new releases, rock, 80's, blues, jazz, soul and lot's more. **Tune in.**

Local sports your thing? **Tune in.**

Interested in interviews with your local mayors, doctors, conservationists and lots more? **Tune in.**

**Want to have a direct text line to our presenters? Text 0481 071 355**

# fleurieufm.org.au



*Live, Local and Global!*

18 Seaview Road, Victor Harbor SA 5211 • Phone 08 8552 5655

Email us: [info@fleurieufm.org.au](mailto:info@fleurieufm.org.au) • Join us on Facebook

SMS your listener feedback by texting **0481 071 355**



## A huge thank you to all of our sponsors.

To be a station sponsor contact

Sales on **0491 214 561** or [sales@fleurieufm.org.au](mailto:sales@fleurieufm.org.au)

*Michael's Creative Creations*  
 Repair the old, make the new. New or Recycled Timber Furniture  
 Phone 0400 256 881  
 Email: miccolo\_antonio@yahoo.com.au

**Guided tours of our night skies**  
 using laser pointer & telescopes (weather permitting) See our website for dates & details [www.thebackyarduniverse.com.au](http://www.thebackyarduniverse.com.au)  
 New Terry Resort Wirrina Cove & Port Elliot Contact Fraser  
 BOOKINGS ARE ESSENTIAL **0488 705 224**  
[tbu@thebackyarduniverse.com.au](mailto:tbu@thebackyarduniverse.com.au)

**Yankalilla, Rapid Bay & Myponga Agricultural & Horticultural Society Inc.**

**A Big Thank you and Advice of a Special General Meeting**

Firstly, the Show Society would like to take the opportunity to publicly thank those generous members of the community who have made recent cash donations to the Show Society to assist us to manage ongoing costs through these difficult times. Each of you will be receiving a personal thank you by mail and or email in the near future and will be acknowledged in other ways as time goes by. The generosity of this community is seen in a range of ways from the Show Society point of view. Volunteers come out of the wood work to assist with the Show each year with virtually no prompting and most of the time, as a Committee we are not all aware of

who will appear, but appear they do to undertake the range of tasks required to make each show a success. We wish also to thank all of these volunteers who do their tasks willingly and with no apparent desire for the accolades they deserve. Without them the community would lose their yearly show as a Committee can only do so much. These are the people who do the nitty gritty around set up, transport of materials, attending to the gates and entry processes, organising exhibitions, judging events, and so much more. To both the donors and the volunteers a big thank you on behalf of the Show Society.

Secondly, last month our article outlined the changes that are being planned in the facilities at the Showgrounds as a result of a successful grant application bid driven by Ian Main and Caroline Cleland. We are thankful to the Federal Government for this unprecedented initiative in these difficult times. It was a very competitive national process and we did very well out of this due to the diligence and attention to detail of the aforementioned members of the Show Committee. As was also mentioned last month, a Special General Meeting of Show Society Members will need to be held to approve the first \$30,000 of expenditure of the grant.

Things can change rapidly in these times and we are now able to advise that this meeting will be held at the Supper Hall at the Showgrounds with the mandated physical distancing and hygiene

requirements enacted by emergency legislation. We have developed a COVID SAFE PLAN which will be on display with notices of the types of requirements we all are getting used to in order to avoid the potentially disastrous impact of the pandemic evident around the world. Advice of the Meeting is as follows:

**Yankalilla, Rapid Bay & Myponga Agricultural & Horticultural Society Inc. NOTICE OF SPECIAL GENERAL MEETING**

**Location:** Supper Hall, Yankalilla Showgrounds  
**Date and Time:** Monday 6th of July at 2pm  
**Subject of the Meeting:** To pass a motion to provide the Committee with permission to expend the initial \$30,000 needed for the beginning of upgrade to facilities.

Information on the upgrade will be provided at the meeting and questions answered by the Committee about the upgrade and expenditure.

**Afternoon Tea will be provided**  
**Formal Notice of the meeting** will have been directed to Members by email/mail within 14 days of the meeting with options to provide proxy members/votes at the meeting

**Apologies:** Can be forwarded to [secretaryyankalillashow@gmail.com](mailto:secretaryyankalillashow@gmail.com) or by phone on 0402340029.

Clarification or questions about the meeting process should also be directed to the above email and phone number.

**Note:** While this is a physical meeting, we do have the option for Members to join the meeting via the Zoom App. People who wish to join in this way need to advise us by email to [yankalillashow@gmail.com](mailto:yankalillashow@gmail.com) or by phoning **0484 377 062**.

**SeatoCity CONVEYANCING**  
**Amy Hunt (nee Fretwell) REGISTERED CONVEYANCER**  
 Buying or Selling property? Or Perhaps you need advice about a property transfer, land division, business sale. If so contact Amy your local Conveyancer.  
**Phone: 0407 793 672**  
 Office situated at 1 Mary Avenue Normanville (by appointment)  
 Email: [info@seatocty.com.au](mailto:info@seatocty.com.au)  
 Fax: 8558 2580  
**Ask about our DISCOUNT for First Home Buyers and Pensioners!**

**C. Haywood Excavating**  
**Truck, Trailer, Bobcat, Excavator, Roller, & Grader Hire**



- ◆ Septics
- ◆ Trenching
- ◆ Tank sites
- ◆ Driveways
- ◆ Landscaping
- ◆ Rock Breaking
- ◆ Dam Cleaning
- ◆ Dairy Laneways
- ◆ Tree trimming & stump removal
- ◆ House & Shed site prep & clean up
- ◆ Hole Boring 300, 450 & 600

**Phone/Fax: 85 980 091** **Box 504 Yankalilla**  
**Mobile: 0429 880 032** **Lot 6 Cole Road**  
**Email: [craighaywood89@bigpond.com](mailto:craighaywood89@bigpond.com)** **Delamere**

**electric ideas**  
**James Pearce**  
**Your qualified Electrician operating in Yankalilla and surrounding areas.**  
 0408 779883 | [electricideas1@gmail.com](mailto:electricideas1@gmail.com)  
 PGE 244331



## Corruption!

**W**e certainly live in interesting times. I have been following the unfolding of the latest coronavirus closely because of my interest in vaccines. Pro-vaccine, anti-vaccine, I don't care what you call me, but I will fight to the end to prevent babies and infants being injected with a known neurotoxin. This is insanity! And in my world view, criminal. Likewise I will fight to prevent pharmaceutical companies from getting away with the practice of bad science: eg. the use of active placebos. The only best science placebo is a saline solution. Adjuvant placebos, such as various forms of aluminium or other previous iterations of the vaccine, are not valid placebos. This is only one of the ways that Big pharma cheats and lies.

Merck has been fighting a ten year court case brought by two of its scientists claiming that they were forced to falsify data and insert rabbit antibodies to increase the response count in the MMR vaccine. No end in sight. Delaying and stalling are regular tactics.

Big pharma worked out a long time ago that a little investment of many millions of dollars spent lobbying in the right places will get you just about anything you want. Especially if you can get fast track status. A very good start was to make themselves liability-free for all serious adverse events for a product (vaccines) designated as "unavoidably unsafe" by the supreme court. Big pharma now claims to all and sundry that their vaccines are "safe and effective." The main street media are more than happy to turn a blind eye as 70% of their advertising is pharmaceutical based.

And here we are talking about a vaccine for covid-19 as being the only solution. There are many problems with this. They have been trying to make coronavirus vaccines for decades without success. And apparently there are already 30 different strains of the virus worldwide. You certainly won't be getting a single vaccine for all 30. Another problem is that it may be a genetically modified vaccine. "Crispr" is being touted as accurate modification of the gene structure, but there are many, many examples of unintended consequences. If this vaccine happens to have unintended events the whole human population may be affected. And it will quite likely be mandatory. The ramifications of this are huge.

So back to the corruption. There is a whole cohort of people who should be investigated for major conflict of interests. The prime candidate here is Dr. Fauci (USA). Go and check him out on duckduckgo (google censors the net), especially regarding Dr. Judy Miskovits. The head of the WHO also has a checkered history. He has immense power but he's not even a medical doctor.

And maybe because of his total incompetence, or a hidden agenda, or a promise of reward, Neil Ferguson (of the Imperial College London) should be dealt with regarding the shutting down of the world economy and freaking out the whole planet with a stochastic (ie. random)

model prediction of 20 million dead. His track record, I think, stands at zero on pandemic predictions, as you would expect using random models. And his rich girlfriend breaks social distancing rules to come and bonk him. Breaking the very rules that he helped create.

My point is that we need to wake up to the corruption. You may say that we in Australia don't need to concern ourselves with this corruption overseas, but as you are experiencing, the results are here. What happens in the US affects the whole world. We are locked down with a rather bleak immediate future.

This is only one little trip down one rabbit hole. There are many other rabbit holes, each leading to the sad state of gross inequality in the developed as well as the developing world. Maybe I will introduce more rabbit holes in future letters. There are some beauties!

What I encourage you to do is to explore the net and do your own research. In this regard some sites I have found to be helpful are: *Childrens Health Defense*, *Jeremy Hammond*, *Peers Want to Know*, *Greenmedinfo*, *The Corbett Report*, and *Global Research News*. *Amazing Polly* on YouTube is also definitely worth checking out. Happy hunting!

And then we need to look at some remedies. On this front I have great respect for the English thinker George Monbiot. Jon Rappaport is also good, more focussed on self-knowledge.

The official 'experts' seem to have literally taken over governments in a grand coup. And a good number of them are corrupt. These official 'experts' come out of universities world-wide which are totally in thrall to the funding and grants from the military/industrial/pharmaceutical corporations. These corporations then use the research from these universities to make massive profits.

It is time to reclaim our rights because they are being trampled on by psychopaths, sociopaths and narcissists with ego, greed and power as major drivers. And in our silence we are complicit. Let's use this lockdown as a research opportunity to explore what's *really* going on in the world.

**Tarpan**  
**Second Valley**

### Editor's Note:

*Be careful what you 'research' on the internet. The world is full of medical and other conspiracy theorists who would have you believe a multitude of false claims and outright lies, which may seem believable on the surface but have no scientific backing, including the anti-vaccine culture, climate change sceptics and the anti-5G mob to name a few high profile contenders. Pandemics provide a breeding ground for mis-information. Too much time on our hands in isolation can lead to a bad case of over-thinking!*

## Thanks to ACH.

I would like to express our heartfelt thanks to the nurses and carers at our local ACH Nursing Home. My Wife, Jean, passed away on 3 June 2020 after a long battle with Alzheimer's disease. It takes very special people to care for all the residents, all who come from different backgrounds and come with varied challenges. For the last 22 months she has been looked after with care and compassion. Thank you to all concerned.

**Lofty Woollett - ACH Yankalilla**  
**& Jan Scott - Daughter**

## Readers Letters

**C**ertainly plenty to read in the latest issue [June 2020] of the YRN with several interesting topics covered about which I would like to give my opinion. However, it would seem to me that it might be inadvisable to comment in case it could be dangerous to the health or safety of your readers! It seems to me that any attempt at humour or that often used phrase "being entitled to an opinion" is quickly disappearing from sight, despite the Editor's efforts. It could be that we are following in the footsteps of the UK where certain people are so easily offended (the description often used is "snowflake"). It would be sad to see the YRN banned or even burnt, you know, like they did in the thirties in Europe! If I have offended anyone with this letter (should Paul choose to print it) I sincerely apologise, I shall keep my opinions to myself in future!

**Peter Perryman**  
**Yankalilla**

## Shuttle Bus

**Based in Wirrina Cove**  
**Servicing the Fleurieu**

**Door to door services to:**

- Wineries & Restaurants
- Heysen Trail
- Adelaide Airport & City
- Victor Harbor & Goolwa
- Cape Jervis Ferry

*Enquire about other locations*

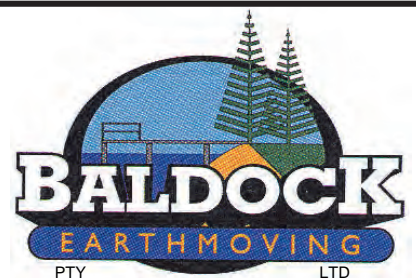
**Contact Fraser**

**0488 705 224**

**Book online at**



**tbu@thebackyarduniverse.com.au**



**Earthmoving and Drainage Contractors**

**Phone 8558 2686 (Office)**

**0418 857 144 (Peter)**

**Fax 8558 2687**



**AuSlate**

**PAVERS**

Licence No. RL144333  
ABN 51 082 326 332

**Rubbish Removed**  **Gutters Cleaned**

**0413 830 113**



## Open Letter to the Mayor from Ruth Eisner

(Printed with the Mayor's responses to each section for clarity)

I would like to register my puzzlement about Council's decision to allocate so much money to the SLSC. Why? What were the origins of this response to, I assume, an application from SLSC? How does a group like this receive the possibility of a very large and expensive new building in an entirely inappropriate position on the fore-shore?

The SLSC is a volunteer group contributing training to children and youth for swimming and rescue skills. All good and valuable. They also provide the space for social events, to raise money for their activities. Our beach is not a surf beach and requires very little, if any, life-saving situations. Your listing of this being one of several major spending focuses looks like a very big red herring.

Please can you explain to me, and to the community, the reasons for Council's interest in supporting this project.

**Mayor's response:** Council has not committed or allocated funds to the SLSC, the budget proposal has conditions as described in the April council minutes. Surf lifesaving SA came to council in 2015 with a proposal to rebuild the club this didn't eventuate but resurfaced in 2019. Council is obliged to listen to these requests also listen to the community therefore we are visiting the needs of the Normanville Surf Lifesaving as per the April council agenda and minutes. There are 5 options coming back to council for consideration. We have just received a letter from the Minister for emergency services and there is no extra government funding, we have had a building engineering assessment done, if the report says the current building is sound I will not be supporting demolition/rebuild.

**Ruth:** Also it seems that the SLSC project is linked to a redevelopment of the Beach Cafe. Isn't the Beach Cafe redevelopment idea a completely separate one? Why would they be linked as one development?

If the Beach Cafe were to be improved, the current footprint allows for some expansion and

re-design, as in, for example, an improved kitchen area. Around the cafe is further room to make the cafe a little bigger and more efficient. It could be improved really tastefully, and not at huge expense. As for a Grand Design, either for the cafe, or for a better SLSC facility, either would be really out of place for our Normanville foreshore. The ideas mooted by Council thus far seem seriously inappropriate.

**Mayor's response:** It is good planning to consider all options and value of incorporating the 2 buildings to be considered. Council works with the lessee to bring improved facilities as required.

**Ruth:** I would also like to register my disappointment in Council's withdrawal of a) support of and b) In the Loop pages from YRN. Whatever the reasons that caused this, it seems unskillful to continue down this track, and detrimental to Council's relationship with the community. If you wanted to make a point, it has been made. Trust-building seems a high priority. Current actions don't seem to be achieving this. I wish Council to find ways to mend this broken bridge.

**Mayor's response:** Council has been reviewing the way, and in time, its news gets to the ratepayers and community, also savings and efficiencies are constantly being sought. In 2017/18 council investigated this and decided that council's data base and media support was not in a position to make the change therefore continued with the paying YRN \$35 -\$40,000 pa to distribute the Loop. During the recent community engagement, the data base grew, and media support was developed giving council the opportunity to connect directly, more frequent, and effectively. We have met with the editor of the YRN and he is able to publish any of council's media releases but council will not be paying for the distribution, you would have already received email messages from council. Council will buy advertising space on an as needs basis as we do with other publications.

**Editor's Response:** Mayor Glen Rowlands has mentioned the figure of \$35,000-\$40,000 a few times now in correspondence and in council meetings. This figure is inflated by up to 48%, so I feel I must correct this.

I agreed to publish the DCY's 'In The Loop' in the YRN at the request of former Mayor Malcolm Schlein commencing in July 2012. The expenditure up to that point was estimated to be around \$42,500 per year. I agreed to print the 'Loop' for a price of half the listed advertising rate. So for every 4 page section, I charged the DCY for 2 pages.

So, from July 2012 to June 2013 it was \$23,812; July 2013 to June 2014 was \$24,464; July 2014 to June 2015 was \$25,484; July 2015 to June 2016 was \$25,928; July 2016 to June 2017 was \$27,814 (1 issue was 6 pages); July 2017 to June 2018 was \$36,690 (4 issues were 8 pages); July 2018 to June 2019 was \$31,798 (2 issues were 8 pages); July 2019 to March 2020 \$24,460 (2 issues were 8 pages). At the current price, 11 issues of 4 pages each would cost DCY \$26,906 pa.

Glen also mentions 'media releases' in his above response. Since the final 'Loop' in March there have been no media releases sent to YRN from the DCY. There were a few general emails regarding Covid-19 sent to people on the DCY's email list and the one that this letter from Ruth refers to, was also sent to those on the email list. Since March there have been 2 paid adverts, one

regarding walking trails (April) and one regarding DCY's plans to send information electronically and requesting you details for their database (May). As this goes to the press their latest update has just arrived in the email.

**Ruth:** I am happy enough to respond to your request to 'have my say' in this letter. I would prefer to have had your request coming through the YRN 'In the Loop' pages.

**Mayor's response:** Your say has been recorded in the consultation.

**Ruth:** I look forward to your reply to the questions I have raised here.

Thank you and regards,

**Ruth Eisner.**

**Mayor's response:** Ruth, I hope in some way this gives answers to your concerns please follow the outcomes through the council agenda and minutes.

**Editor's Response:** That last line from the Mayor is very telling. If you are a ratepayer or resident of this district, you will need to sift through many hundreds of pages of agenda and minutes, on the DCY's website each month in an effort to stay informed of what your local Council is up to. The latest agenda was over 500 pages but the email did include a summary.

## Wave Generator

Over the years there have been numerous letters and opinions about the removal of the wave generator and the problems associated with various methods of its removal.

My question is why does it have to be removed? Is it an environmental or safety hazard? If not, why not leave it where it is?

It adds another dimension to the view, especially on a stormy day with the waves smashing against it. The birds seem to enjoy perching on it. And it inspires conversation when meeting visitors to the area.

Also on the subject of our beautiful beach, I was disturbed to read the letter in the June YRN about Doctor Dyson's study of sand movement and the degradation of Normanville beach. I would be interested to hear the council's comments on this issue.

**Alan Whiting,  
Carrickalinga**

## Total Recovery

- Lounge Suites
- Dining Chairs
- Sofa Beds
- Recliner Chairs
- Kitchen Chairs
- Car Seats
- Tractor Seats
- Bike Seats
- Boat Seats
- Caravan Interiors

### FREE ESTIMATES

#### Fabrics at discount prices

Warwick, Windsor, Wortley Group, Redelman Outlet for Howard Products Furniture cleaners, leather conditioners, wax, polish and Restora Finish Caravan Parts and Spares Including roll out awnings, caravan covers and much more.



0412 991 171  
or 8558 2878

totalrecovery@bigpond.com

www.totalrecovery.biz

or call at our workshop  
9 Field Street, Normanville  
Ray & Val Beavis

Your local  
upholsterers  
for almost  
40 years!

## COURIER



Est: 1993

Delivering a reliable  
service to the Fleurieu  
Peninsula for 27 years.

Fleurieu-Adelaide-Fleurieu daily

0414 838 930

peninsulaparcels@gmail.com

**NORMANVILLE**  
Edward Avenue

**YANKALILLA**  
Wallman Street

# SELF STORAGE

## DO YOU NEED STORAGE?

Household goods, shop stock, trade tools, business records?  
Long or short term available.

Range of sizes include: 2.2m x 4.5m, 3.0m x 4.0m, 3.0m x 6.0m, 3.3m x 9.0m

**Ray White**

**Ray White Normanville** (Managing Agents)  
67 Main South Road, Normanville Phone 8558 3050

**Ray White**

## ASH BAKER'S CLEANING SERVICES



- Carpets
- Windows
- Empty Tenancy
- General Cleaning

**0428 858 177**  
**or 8558 3001**

## News from Lions

**W**ell restrictions have been slowly lifted and hopefully activities can commence again soon. The Book Shed and bingo stall opened on the long weekend. We still need to observe social distancing and hand washing but we hope that you will be back supporting us in our activities. Many locals have missed not being able to get books from the shed and as the library was also closed; many had run out of reading material. We were sad to hear of the passing of member Brian Cain after a long illness.

Lions are looking at a handover on Monday July 6 but this will depend on how things turn out in the future with large groups assembling. We look forward to the new President and board operating for the next 12 months. For all your information read it in the YRN.



## Locksmiths On The Fleurieu

Home and rental  
Sensible prices  
Quality service

Standard rates on weekends

Phone Paul

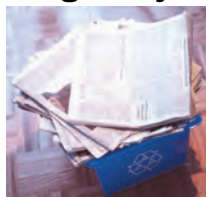
**0419 030 998**  
**8556 8131**

www.lotf.com.au



## Lions Club of Yankalilla and Districts

Help us to support your local  
Community Fund Raising Projects



### Recycled/Depositables

- Cans/Bottles/Plastics
- Lions Paper Shed (behind the Museum)
- South Coast Can & Bottle Co (Donation Tin)

### BBQ Hire

A trailer mounted BBQ with gas. We deliver and pick up for a \$100 fee.  
Phone Graham 8558 3630



### We want your Newspapers!

**Paper sheds at:**  
Yankalilla (behind Museum),  
Inman Valley, Myponga (market),  
Second Valley, Cape Jervis.  
No flyers, magazines or cardboard

### Marquee Hire

4 modules, each 6m x 6m  
Contact Jim: 0419 807 149

### Lions Book Shed - Main St, Normanville

Books, DVD's CD's. Trading hours: Fri-Sun 10am -4pm

### Sheep Shot

Bagged sheep manure for sale - 5 bag limit  
\$6.00 a bag delivered within boundaries of Yankalilla,  
Normanville and Carrickalinga.  
Leave orders at Bingo Stall or ring Nigel Pile 8598 5302



## Tanks Tanks Tanks



### TEAM POLY TANKS

from 600 litres to 22,500 litres

### FIRST QUALITY "TAURUS"

corrugated iron tanks from 450  
litres to 22,500 litres

### HOUSEHOLD MODULAR

**TANKS** 2, 3 & 4 modular  
includes tank - tap - stand - filter

*Plus All fittings and  
accessories required to  
complete your job*

- Pressure Pumps
- Pressure Fittings
- Galvanised Gutters
- Philmac Fittings
- Drains & Grates
- Stormwater Pipe & Fittings

# Normanville MITRE 10

2 Mary Street, Normanville SA 5204  
Phone 8558 3100 Fax 8558 3092

# PEST CONTROL

## OGAY



### PEST CONTROL

We protect your most valuable assets:  
Your family's health and your home.

- Affordable, Environmentally Responsible Control of all Pests
- Termite & Pre Purchase Inspections
- Credit Cards Welcome

**WE GUARANTEE OUR SERVICES!**

Call Bruce 8557 4044 or  
0417 835 966



Termite Boiling Systems

# Southern Ocean Construction

Asbestos Removal Ph 0429 954 125 Curtis Wilson  
Quotes - Advice BL 36659, Asbestos Lic 94870, EPA Licenced

[www.southernoceanconstruction.com](http://www.southernoceanconstruction.com)

## TREE FELLING & LOPPING

- Free Quotes • 25+ years experience
  - Competitive pricing • Fully Insured
- Call Geoff – 0411 117 113**  
*(Saw-miller to the Governor)*

## CONSTRUCTIONAL STONEMASON

**Rob Wheatley 0438 584 586**

- Over 25 years experience *We will travel*
- Specialise in matching existing stonework
- Ruins Restoration • Repointing • Retaining Walls
  - Slate Paving • Feature Walls • Fireplaces

## Clark Solid Plastering

- New & Existing Homes
  - Texture Coating
  - Internal/External Crack Repairs
  - Stone Pointing
  - Quoins & Bands
  - Underpinning
- Licence No. BLD 291539
- Chris Clark 0477 836 367**  
[clarksolidplastering@gmail.com](mailto:clarksolidplastering@gmail.com)

## Yankalilla Ceilings

- Walls & Ceilings
  - New Homes
  - Extensions
  - Ornamental Cornices
  - Insulation
  - Repairs & Renovations
- All types of Plasterboard work*  
*Phone Sean Gallagher on...*
- 0417 778 939**  
Licence No. 57578R

## Garden & Property Maintenance

- Spencer's Lawn Mowing & Garden Maintenance**
- Professional, reliable, prompt service  
**Pensioner & Loyalty Discounts**  
Free, no obligation same day quotes Ph **0433 397 768**
- BLOCK SLASHING  
MULCHING  
PRUNING  
GUTTER CLEANING**

## Dave Jansen Plumbing

m 0417 474 878  
f 8558 8383  
e [davejansenplumbing@senet.com.au](mailto:davejansenplumbing@senet.com.au)

- Maintenance
- General Plumbing
- Drainage
- Hot and Cold Water
- Solar
- Rainwater Catchment

# MATRIX JOINERY

Domestic and Commercial Fit-Outs  
Custom Built Kitchens, Vanities, Laundries and Cabinetry  
Extensive range of Finishes & Materials  
Free Measure & Quotes  
Full Co-ordination of Trades (if required)  
From Budget Re-surfacing to Complete Transformations  
Over 20 years experience

**Jeff Long**  
phone: 0430 646 092  
email: [matrixjoinery@bigpond.com](mailto:matrixjoinery@bigpond.com)

Bld  
234601



**YANKALILLA  
LANDSCAPING  
& GARDENING CENTRE**  
EST SINCE 1985

- Extensive Nursery & Garden Products
- Mulch, Soils & Sands
- Paving & Retaining Supply & Install
- Excavator, Bobcat, Loader & Truck Hire with licensed operators
- Rainwater Tanks & Stormwater Systems
- Plumbing & Irrigation Supplies
- Equipment Hire
- Fodder & Pet Supplies
- Agents for Air Liquide Australia 

**Open  
6 days**

**Monday-Friday 8.30am-4pm**  
**Saturday 9am-1pm**  
**Sunday Closed**  
Closed public holidays

184 Main Road, Yankalilla  
Phone: 8558 2461  
[www.yanklandscape.com](http://www.yanklandscape.com)  
Email: [info@yanklandscape.com.au](mailto:info@yanklandscape.com.au)



## Religious Notices

**Anglican Church in Australia**  
**Christ Church Yankalilla**  
 130 Main South Road, Yankalilla.  
**St. James Church Delamere**  
 Main South Road, Delamere.  
**Worship service times:**  
 1st Sunday, 9am at Yankalilla  
 2nd Sunday, 9am Yankalilla, 11am Delamere  
 3rd Sunday, 9am at Yankalilla  
 4th Sunday, 9am Delamere, 11am Yankalilla  
 5th Sunday Combined Service — ring contact number for details.  
 For further information contact: 8598 0223.

**Yankalilla Community Church**  
 135 Main South Road, Yankalilla  
 Sundays at 5.00pm.  
 Contact 0423 588 959. **All welcome**

**Lutheran**  
**Sanders Hall, 121 Main South Road, Yankalilla (next to Uniting Church).**  
 1st & 3rd Sunday 7pm

**Revival Fellowship**  
 Ph 8558 3262  
 Sundays 255 Pimpala Rd, Woodcroft at 1.30pm & 4.15pm.  
 Other meeting times, contact Chas Hilder on 8558 3262.

**St. Peters Catholic Church**  
**Normanville**  
**Corner St. Andrews Blvd & Willis Drive**  
**Mass Times**  
 1st, 3rd & 5th Sundays @ 10.30am.  
 2nd & 4th Sundays @ 8.30am.  
 1st Friday of each month. 11.45am Benediction.  
 Mass at 12noon. Followed by shared lunch in Church Centre.

**South West Fleurieu Uniting Churches**  
**Yankalilla Uniting Church, 121 Main South Road - Sunday 9.15am**  
**Delamere Yoho Road- Sunday 9.15am (no service on 5th Sunday)**  
**Range Rd, Parawa 11am 1st Sunday of month.**

## Classifieds

### Buy, Sell, Rent

### Guitar strings etc

**Basic gear locally available for convenience**  
**Strings** - Guitar/bass/banjo/uke/etc, **Picks**, cables, tuners, drumsticks, **Reeds** for Sax & Clarinet, valve oil, cork grease, etc.  
 Available for pickup at **NORMANVILLE**  
 Call/SMS Paul on **0409 723 341 or 8558 3201**

**HALL HIRE - YANKALILLA RSL** Contact Avril or Brian Clark on 8558 3565 or 0407 492 071.

**MARSHALL GUITAR AMP - JVM 210C.** Good condition. \$1000 ono. Phone 0409 723 341.

**TRAILER FOR SALE - 7 x 4 box trailer.** \$500 or best offer. Phone 0409 723 341.

### General

**FLOOR SANDER** and edger available for hire \$128.00 per day plus belts. Normanville Mitre 10 8558 3100

**PICTURE FRAMING** at affordable prices. Phone John on 0428 973 825.

**PROFESSIONAL KNIFE SHARPENING** using Japanese water stones. Prompt service very reasonable rates. Phone Peter 0407 974 435.

**RUG DOCTOR** Steam cleaner hire for your carpets. Normanville Mitre 10. Ph 85583100

**WALLPAPER STEAM STRIPPER HIRE.** Just add water. Normanville Mitre 10. Ph 85583100.

## COMPUTER SUPPORT

General technical help  
 Troubleshooting  
 Printer and scanner  
 TV setup etc.

Call Shannon  
 0427 289 716 / 8558 2657



## Timber Floor Sanding and Polishing

Restoration work and new installations

Floating Floors All areas BLD 205596

Ph: Paul 0428 563 803, ah/fax 8554 3143

**O'Brien's**  
**Gardens Gutters**  
 Mowing Pruning  
 Gutter Clean Block Slashing  
 Yard Clean Ups Rubbish Removed  
 0413 830 113

## CAPE JERVIS PLUMBING

- NEW WORK
- ROOFING
- RENOVATIONS
- GUTTERS

**Steve Brokensha 0400 434 278**

Licence No. 031684A or 8598 0301

**tlc tiling**

New Homes  
 Bathrooms  
 Main Floors  
 Kitchens  
 Outdoor Areas

**On the Fleurieu**  
**Call Leigh on**  
**0433 108 999**  
 LIC. BLD 240328

## The Yankalilla News is available at the following locations, monthly.

### CAPE JERVIS

Cape Jervis Hotel-Motel & General Store, Main Rd.  
 Ph:85980276.

### DELAMERE

Delamere General Store, Main South Rd. Ph 85980200.

### GOOLWA

Visitor Information Centre, cnr Cadell St/Hay St. Ph 85553488.

### INMAN VALLEY

Inman Valley General Store, 1714 Main Rd, 8558 8242.  
 Inman Valley Post Office, Main Rd. IVCPA Postmistress:  
 Ann Gater, 8558 8205.

### MOUNT COMPASS

Mt Compass Post Office, Main Rd. Ph: 85568200.

### MYPONGA

Myponga Post Office, 53 Main Rd. Ph:85586152.

### NORMANVILLE

Beachside Caravan Park, Williss Dr. Ph: 85582458  
 Caffè On Bungala, 48 Main Rd. Ph: 85582537.  
 Jetty Caravan Park Normanville, Jetty Rd. Ph 85582038.  
 Lady Bay Hotel, St Andrews Blvd, 8558 2220.  
 Min Palace Chinese & Thai Restaurant, 6/3 Mary St,  
 Ph 85582422.  
 Mitre 10 & Mitre 10 Gardener, Shops 1-2 Mary St,  
 Ph 85583100.  
 Normanville Bakery, Shop 9, Shopping Centre,  
 Ph:85582177.  
 Normanville Mall, Normanville Shopping Centre.  
 Normanville Newsagency, Shop 2, 48 Main Rd. Ph: 8558 3420  
 Normanville Post Office, Shop 1 Shopping Centre, Ph: 85583049.  
 Ray White Real Estate, 67 Main South Rd, 8558 3050.  
 South Coast Realty, 69a Main Rd. Ph: 85582900.

### SECOND VALLEY

Leonards Mill, Main South Rd, 8598 4184.  
 Second Valley Caravan Park, 2 Park Ave. Ph:85984054  
 Second Valley General Store, Finniss Vale Dr.  
 Ph:85984064.  
 New Terry Hotel & Golf Resort, Wirrina Cove.  
 Ph:85982400.

### SELICKS BEACH

Sellicks Beach Post Office, Esplanade. Ph: 85563020.

### VICTOR HARBOR

Avondale Deli, 25 Ocean St. Ph: 85521058.  
 Harbor View Deli, 2/36 Port Elliot Rd. Ph: 85523334.  
 Harbour Bakery, 72 Victoria St. Ph: 85525455.  
 Fleurieu FM (89.3 or 94.7) 18 Seaview Rd. Ph:85525655

### YANKALILLA

Book Exchange & 2nd Hand Goods, 92 Main St,  
 Ph:85582835.  
 Caltex Normanville, 216 Main South Rd. Ph: 83275970  
 Gallery 88, 88 Main St.  
 Yankalilla Bakery, 102 Main St. Ph: 85583413.  
 Yankalilla Library, The Centre, Ph:85582043.  
 Yankalilla Family Pharmacy, 107 Main South Rd. Ph 8558 3254.  
 Yankalilla Foodland IGA, 106-108 Main South Rd. Ph 8558 3074.  
 Yankalilla Landscape & Gardening Centre, 184 Main Rd.  
 Ph: 85582461.  
 Yankalilla Post Office, 98A Main South Rd. Ph: 85582020.  
 Yankalilla Take Away, Main Rd. Ph: 8558 4158.  
 Yankalilla Trading Store, 87 Main Rd. Ph: 8558 3804.  
 Yankalilla Visitor Centre, Main South Rd. Ph:85580240.

**South Coast**  
**LIQUID WASTE**  
 VEOLIA Environmental Services  
**Septic Tanks**  
**Emptied & Cleaned**  
**Licensed**  
**Grease Trap Cleaner**  
**8398 2484**

**Electric Stove**  
**Installation & Repairs**  
 Phone Tod Jones  
**0438 689 722**


  
 Complete Home  
 Handyman Service

**SOUTHERN FLEURIEU  
HOME MAINTENANCE**

All Maintenance & Repairs

Cape Jervis to Myponga

Quality Workmanship Guaranteed  
at affordable prices

Please ask for a quote

Call  
**Mike**

**0422 749 721**

sfhm@bigpond.com

ABN 16 139 535 643

**WATER**

**Water Man Cartage**

**Bulk domestic  
water deliveries**

14,000ltr stainless steel tankers  
Same day delivery - 7 days a week

**Phone Andrew  
0409 676 527**

Email: [awspear@adam.com.au](mailto:awspear@adam.com.au)

**Window & Door  
Renovations**

Timber & Aluminium  
Builders Lic No. GL 35513

**Gary Allen**



- Windows (Total or Part Removal)
- Window Enlargements
- Window to Door Conversions
- Bi Fold Doors

**Mobile: 0413 519 130**

Email: [garyallen9@bigpond.com](mailto:garyallen9@bigpond.com)  
Quality Workmanship Guaranteed  
Serving the Fleurieu Peninsula

**Fleurieu Refrigeration**



Lic. No. AU00183  
(Accredited Refrigeration Mechanic)

COMMERCIAL, INDUSTRIAL  
& DOMESTIC

**REFRIGERATION &  
AIR CONDITIONING**

MAINTENANCE & REPAIRS

**Ph 8327 0166  
Fax 8327 0926**



roofing & guttering

- Roof restorations
- Roof repairs
- Gutters
- Downpipes
- Metal Fascias
- Roof Conversions
- Gutter guard
- Sky lights
- Whirly birds
- Wall cladding

Josh Almering T 0401 251 707  
E [joshalmering@googlemail.com](mailto:joshalmering@googlemail.com)  
BLD244716

Sheds . Custom Designs . Carports  
. Workshops . Barns . Garaports .  
Industrial Sheds . Rural Sheds

Shed Boss build much more than just sheds. As licensed builders (BLD236453) we can custom design and build to your needs, taking care of the complete project from start to finish. Affordable, quality sheds with hassle free construction and a timely, personalised service, contact us for a quote today.


**ShedBoss™**  
 BUILT STRONG. BUILT RIGHT.

2 LINCOLN PARK DRIVE, VICTOR HARBOR

[www.ShedBossSheds.com.au](http://www.ShedBossSheds.com.au)

Phone 1800 877 744

**AAA Carpenter/  
Handyman**

House & Yard Maintenance

Ph Steve: **0427 590 000**

- Furniture repairs/restorations
- Home Fencing & Repair Specialist
- Reliable
- Work guaranteed
- Quality assured
- No job too big
- No job too small

**Fleurieu Peninsula  
& Kangaroo Island**

**REMOVALS**

LOCAL \* COUNTRY \* INTERSTATE

**Moving locally  
or interstate?**

Owner operated. Pensioner discounts available.  
Insured\* \*(Condition Apply)

Call or text Strop on  
**Mobile 0409 853 443**  
Based in Yankalilla

**Professional, Reliable & Friendly**

**Electrician  
Normanville**

Rural - Commercial - Domestic  
Servicing Southern Fleurieu Peninsula

- Power points
- Fans
- Lights
- Stoves
- Water heaters
- Safety switches
- Smoke alarms
- Extensions & renovations
- Pumps



Lic.No.PGE269697

Phone **Tod Jones**  
**0438 689 722**

Specialist in all  
types of

**Agricultural  
Fencing**



Feral exclusion fencing  
Riparian fencing  
Equine fencing  
Post & rail fences  
Cattle & sheep yards (design & construction)  
Mobile welding  
Shed construction

**Quality workmanship**

Andrew Bailey  
**0402 024 457**  
[ab5star@live.com.au](mailto:ab5star@live.com.au)

The Books and Words Group aims to encourage readers, writers, and lovers of words to engage with activities aimed at exploring a range of literary events in supportive community environments.

As mentioned previously, all events for this year are on hold and membership fees have been waived for 2020. If you have already paid this will be credited for 2021. Check our website at <http://booksandwordsgroup.weebly.com/> for updates on our activities as soon as these become available.

Since no other activities were possible for a while, an extended version of our newsletter 'The Scribe' was produced and circulated to our whole email list. Another extended version of the Scribe is still in preparation and if you wish your name added to the email list please email us at [booksandwordsgroup@gmail.com](mailto:booksandwordsgroup@gmail.com). There will be no fee for this addition and you can have your name taken off our extended email list at any time. A number of supporters of the Books and Words Group contributed to the previous expanded Scribe and I would still like others, both in the Group and general community members, authors and poets, to contribute to coming newsletters if you are interested.

While I have often had very positive comments on our events, I have also had the comment made to me that the BAWG seems an elitist group with a narrow focus and I disagree with this strongly. We are a group who try to be very inclusive but, of course, struggle with the types of offerings that will appeal to a wide audience. We are not a book club, as these exist in the district and play a valuable role in furthering people's passion for reading. What we try to do is construct and support events that will have appeal to a wide range of people. All of these events, naturally, will focus on our core value that words and the elegant use of these is a powerful thing that can benefit all levels of reading (and listening) interest and ability.

I know that people are a little tired of community groups just providing articles to the YRN saying that everything is cancelled and hopefully this can soon change with easing of restrictions and we can advise of coming events. So, I have gained permission from the author and subjects of the following story, previously published in the Scribe, to offer it to the YRN for inclusion in this edition. If you read it I am sure you will enjoy it:

## Off Road

By Janet Page

I live at the end of a rough track, appropriately named Nowhere Else Road. We love where we live, in bushland, with an abundance of birdlife and fabulous views. Sometimes I do worry a bit about our remoteness, vulnerable as we may be in the event of a bushfire or indeed any sort of emergency.

We had very little passing traffic during our first few years there. A couple of years ago, this began to change. Strangely, drivers have attempted to use our property as a thoroughfare to Rapid Bay campground. Soon after this started, we worked out that these drivers were blindly led astray by a Google error on their phones. We have emailed Google maps, but the lost cars continue to arrive, especially in summer. Mostly the occupants appear innocent enough, but occasionally they look a bit suspect and we have to wonder if they might be under the influence of drugs.

We hear that crime in rural areas has grown. There are more car and house break-ins and thefts related to methamphetamine, also known as ice or crystal meth. Ice is a particularly sinister drug of choice. With heroin, people tend to slow down; ice makes people speed up, think they're super human and they take extreme risks. A high percentage of armed robberies and violent crimes are committed by people taking ice. All this is to say that we do feel more vulnerable on our remote property under the shadow of what we hear about these crimes.

My friend Rosie lives off grid on a fairly remote property not far from us. When she rang me with a note of panic in her voice and told me that a crazy person was driving through fences on her land, we both thought of the bizarre things that people do on ice. Rosie couldn't speak for long, as two police cars, an ambulance and two SES rescue vehicles arrived on the scene. There had been rumours that a missing person involved in drug crimes might be in the district, so that may have accounted for the full armoury of emergency vehicles.

Much later, Rosie took up the story of what happened that morning: She was sitting in her back room reading emails, when suddenly she heard a very loud twanging. The dogs went tearing out to the front and raised the alarm. Seconds later, Rosie watched a small white SUV hurtling down the hill over her front paddock towards the creek. It had already crashed right through a fence, and accelerated downwards. It veered over to the left just before the creek and then quickly reversed up the hill behind it. It hurtled forward yet again, and with another high pitched twang, crashed into a fence directly in front of the creek. Rosie thought, "Whoever that is, they've seen me watching them and have decided to change directions."

Rosie composed herself, ran inside, rang the police and reported these events. Then she called out to her partner, who had just woken from sleep. Dave took a moment to work out what Rosie was saying about some crazy person smashing through fences. Then he shouted, "Shut the doors!" and ducked out of the house to have a look. Meanwhile Rosie secured the dogs in the back bedroom. Dave returned, carrying a shovel and crowbar and he clipped the doors.

When the police arrived Rosie was interviewed. The officers and volunteers moved back and forth between the house and the creek, investigating the vehicle, which was lodged in the fence, and looking for clues.

Rosie and Dave watched the proceedings from their shed. Suddenly, Dave was struck by the fact that his car was gone from its usual parking space. Within seconds it clicked in both their heads that this crazy person had come and jumped in Dave's car. Rosie thought, "Oh my God, he was watching me while I was up in the shed mixing up the horses' feed." When she came back to the house, this person must have taken the opportunity to get in the car and drive away. This made the situation even more frightening, knowing that someone was skulking around watching.

Shortly after these thoughts occurred for Rosie and Dave, a young officer approached. Dave explained to him, "Actually, I've just realised that that's my car." The officer raised his eyebrows and asked for a description of the car and number plate and then checked the details with his colleague who was down the hill.

After quite some time, the senior policeman came up from the creek. Rosie asked, "Have you seen the person?" He said quietly, "He's



not there." Rosie said, "Oh, that's crazy! That means he's still around." The officer said, "No, there never was anyone." Rosie asked, "What do you mean?" In a flat voice he responded, "It was a roller." Rosie asked again, "What do you mean?" and the officer said, "It's a roller, a roller!" And Rosie said, "Ohhh."

By then the police officers, ambulance volunteers and local SES volunteers were all standing in a circle with Rosie and Dave. It was then that Rosie looked over at Dave and noticed that he was still wearing his favourite old board shorts, which, in truth, did not flatter his bony legs. The nylon mesh was peeking through a tear from hem to waist. Rosie began to feel uncomfortable, but still couldn't fully take in what the police were telling her. "But I saw it," she insisted, "hurtling down the hill, reversing fast, roaring back over the hill!" The officers explained the probable sequence of events that a driverless vehicle can take, as governed by laws of physics. To them it was all logical answers.

Anyway, gradually the officers and crews started packing up. Rosie and Dave nodded and thanked them. Rosie recalls that the officers and volunteers just looked to one side with a dismissive expression, as if to say, "You wankers - waste of space."

Afterwards Rosie and Dave came inside and sat awhile with the dogs. As they reflected on what had happened that sunny morning, they had an attack of the giggles and then dread at the prospect of what was to come. They still had to face the local volunteers in the supermarket and respond to curious questions from neighbours and friends. Then too, there was the considerable expense of repairs to fences and vehicle. Dave couldn't believe that he hadn't put his hand brake on after returning from shopping.

Now Dave always checks. Rosie takes from this, "It was a real comedy of errors, starting with the handbrake."

## General Fabrication

### Metal/Steel

- General Metal Fabrication
- Columns and Brackets
- On-Site Welding Service
- Balustrades
- Maintenance Welding
- Retaining Wall Steel

Reliable and  
Quality assured  
Services

No job too small



Contact Kai Hillen  
Mob: 0422 870 035

Email: [kayhillen@gmail.com](mailto:kayhillen@gmail.com)

## Yankalilla and Districts Community Men's Shed

The Yankalilla and Districts Community Men's Shed re-opened on Tuesday 9th June, following the closure due to the coronavirus pandemic. At the time of writing, the Shed opens on Tuesdays and Fridays from 9am to 3pm. Of course covid directions apply, and currently social distancing restrictions provide for 20

persons in the workshop, 6 in the kitchen and 6 outside at any one time. The directions are under constant review by the authorities, and the Covid Safe Plan is currently being applied by the Shed committee. The directions may well have changed prior to the printing of this edition.

It was great to see a number of Sheddies attending the shed recently, and we are hopeful that circumstances are such that the Shed gets back to full swing in the very near future.

One person who has been very busy away from the Shed is Chris, who put his isolation time to good use and created a magnificent piece of craftsmanship in the form of a "marble tower". The tower (pictured) is largely made of timber, and marbles are elevated through a chute to the top of the tower where they are alternatively ejected down one course over a xylophone creating a musical sound, before zigzagging to the bottom of the tower; or, down a different course where they roll through a series of bells, before finally causing a number of colourful characters to spin, then returning to the base of the tower.

Enquiries concerning the Men's Shed may be directed to Phil Morecroft on mobile **0417 300 901** or by email to [yankalilla@mensshed.org](mailto:yankalilla@mensshed.org).



Australian  
Men's Shed  
Association





**Normally Open**  
Pty. Ltd.

**For All Electrical Needs  
Domestic & Commercial**

**0409 588 399**

[normallyopen@bigpond.com](mailto:normallyopen@bigpond.com)

**Peter Bell**  
Electrical Contractor - Lic PGE 268694  
Lot 36 Jervois Rd (PO Box 240), Yankalilla 5203  
ABN 98 097 187 758

**Electrician**

## Gums'n'Roses GARDENING SERVICE

Over 30 Years in the  
Yankalilla Local Area

Phone:

**0419 033 560**

- Lawn Mowing
- Complete Garden Maintenance for commercial, domestic and holiday properties
- Prune roses, fruit trees, vines & hedges
- Irrigation installation
- Landscaping
- Garden makeovers
- Yard clean ups
- Mini loader hire
- Posthole borer
- Stump Grinding

**MATT'S PRO PAINTING**

Trade Qualified Painting & Decorating  
Licence No BLD 221735

[matt@mattspropainting.com.au](mailto:matt@mattspropainting.com.au)  
[www.mattspropainting.com.au](http://www.mattspropainting.com.au)  
16 Cole Rd, Delamere SA 5204

**0418 856 355**

---

 **C & D's Domestic Cleaning**

ABN 64 875 965 195  
*Have a hassle free experience!*  
Chris 0408 932 312 or Dev 0438 453 773  
Your Local Fleurieu Area



**General Builder**

- /// New Homes
- /// Extensions
- /// Renovations
- /// Bathrooms

[www.quantumbuild.net](http://www.quantumbuild.net)  
Phone Marty on  
**0413 164 258**  
P.O. Box 807 Normanville 5024

**KEN SERRELS YOUR  
LOCAL WINDOW &  
CARPET CLEANER**



PROMPT RELIABLE SERVICE - FREE QUOTES  
Based in Yankalilla & servicing all surrounding areas

**0409 094 166**  
[kenserrels@mail.com](mailto:kenserrels@mail.com)  
[www.kenserrelswindowcleaning.com](http://www.kenserrelswindowcleaning.com)



Southern Fleurieu Plumbing  
Plumbing & Gasfitting Solutions

**All plumbing maintenance**  
Jonathan Brown  
[southernfleurieuplumbing@gmail.com](mailto:southernfleurieuplumbing@gmail.com)

**0402 298 421**  
**24 hour emergency plumbing**

# Normanville Natural Resource Centre

The Resource centre will be opening on Monday 6th July 2020.

We will also be resuming our normal activities including the Community Nursery, Bird Watching, Garden Group Outings, Social Sewing, Bandicoot Monitoring and Veggie Swaps. Hope to see you all at one of these events!

## New Landscapes Boards

Partnering with government and communities

From 1 July, the Adelaide and Mount Lofty Ranges Natural Resources Management Board will be succeeded by two new organisations, the Hills and Fleurieu Landscape Board and Green Adelaide.

The changes are part of the South Australian Government's reforms to how our landscapes are managed. They aim to put community at the heart of sustainably managing the state's soil, water, pest plants and animals, and biodiversity.

Central to the changes is the new *Landscape South Australia Act*



2019 which will replace the *Natural Resources Management Act 2004* from July.

The Hills and Fleurieu Landscape Board will be one of eight regional landscape boards that, along with Green Adelaide, will administer the Act and partner with government and regional communities.

The new boards are designed to deliver a stronger, back-to-basics system with greater autonomy and flexibility to respond to local issues.

## New Boundaries

New regional landscape boundaries, and the boundary of Green Adelaide, also encompass marine areas adjacent to the coast. The regions can be viewed as interactive maps via NatureMaps.



David Greenhough, is the presiding member of the Hills & Fleurieu Landscape Board

David is a director with Mabeki Consulting and focuses on management processes, strategic planning and coaching, financial direction, IT systems and process integration.

He is the current Chair of the Glenthorne Partnership, working with the Department for Environment and Water, partnership members and the community to provide advice and guidance in the creation of the Glenthorne National Park and precinct.

He is a founding member and chair of the Friends of the Lower Field River, a group formed to reinvigorate and revegetate the Lower Field River, near Hallett Cove.

Working with David Greenhough will be:

Andy Lowe – food futurist and Professor at Adelaide Uni

Amy Williams – PPSA and industry group advocate



Chris West – former CEO ZooSA  
Carol Schofield – retired dairy farmer and elected member at City of Victor Harbor

Drew Smith – ag teacher at Oakbank High

Janet Klein – organic viticulturist  
The Normanville Natural Resource Centre looks forward to working with David and the new Hills & Fleurieu Landscape Board members.

## Superworms digest plastic, with help from their bacterial sidekicks

(reproduced from sciencedaily.com)

Resembling giant mealworms, superworms (*Zophobas atratus*) are beetle larvae that are often sold in pet stores as feed for reptiles, fish and birds. In addition to their relatively large size (about 2 inches long), these worms have another superpower: They can degrade polystyrene plastic. Now, researchers reporting in ACS' *Environmental Science & Technology* have linked this ability to a strain of bacteria that lives in the larvae's gut.

Polystyrene is used in packaging containers, disposable cups and insulating materials. When thrown in landfills or littered in the environment, the plastic takes several hundred years to completely break down. Recently, several studies have found that mealworms and superworms can ingest and degrade polystyrene within a few weeks. In mealworms, this ability was linked to a certain strain of polystyrene-degrading bacteria in the worms' gut. Jiaojie Li, Dae-Hwan Kim and colleagues wanted to search for similar bacteria in superworms.

The team placed 50 superworms in a chamber with polystyrene as their only carbon source, and after 21 days, the worms had consumed about 70% of the plastic. The researchers then isolated a strain of *Pseudomonas aeruginosa* bacteria from the gut of the worms and showed that it could grow directly on the surface of polystyrene and break it down. Finally, they identified an enzyme from the bacteria, called serine hydrolase, that appeared to be responsible for most of the biodegradation. This enzyme, or the bacteria that produce it, could someday be used to help break down waste polystyrene, the researchers say.

**Journal Reference:** Hong Rae Kim, Hyun Min Lee, Hee Cheol Yu, Eunbeen Jeon, Sukkyoo Lee, Jiaojie Li, Dae-Hwan Kim. **Biodegradation of Polystyrene by *Pseudomonas* sp. Isolated from the Gut of Superworms (*Larvae of *Zophobas atratus*)***, *Environmental Science & Technology*, 2020

# We pay CASH for bottles, cans & scrap metal

3 Bartlett Place, Yankalilla - Ph 0419 843 244

Now open Mon-Fri 9am-1pm, Sat 9am-noon

Other depots at Victor Harbor 8552 1716 & Goolwa 8555 1188

Visit our website or call for the latest scrap prices

[www.southcoastrecycle.com.au](http://www.southcoastrecycle.com.au)



## What exactly does it mean to live plastic free?

Plastic free living is about eliminating single-use and semi disposable plastic items from your life e.g. Straws, water bottles bags etc.

The term 'plastic free living' is a little misleading because people often think it means living without plastic altogether and this may not be possible in today's world.

To speak of a plastic free lifestyle is a protest against single use plastic - a material that is designed to last forever but is used and thrown away in minutes! You can still own a phone, laptop, car and take your medication but you should continue to monitor your use of these items to manage resources less wastefully.

Plastic Free July aims to raise awareness of the problems with single-use disposable plastic and challenges people to do something about it.

Choosing to be part of the solution, you can act by:

- Avoiding products in plastic packaging (choose alternatives)
- Reduce where possible (opt for refills, remember your reusable shopping bags)
- Refuse plastics that escape as litter (e.g. Straws, takeaway cups, utensils, balloons)
- Recycle what cannot be avoided



You will be joining millions of people from 159 countries worldwide in making a difference.

The NNRC and South Coast Environment Centre are holding a discussion online about successes, challenges, pledges and tips on reducing plastic. Please join us for this informal chat on Tuesday 7th July at 2.00pm.

**CHOOSE TO REFUSE**  
SINGLE-USE PLASTIC  
PLASTICFREEJULY.ORG

**ZOOM INTO OUR ONLINE PLASTIC FREE JULY CONVERSATION**

Hear one persons story of how they took the challenge last July, their success's & their failures! Learn new tips, share old tips and pledge your challenge for this year!

When: Tuesday July 7th, 2 - 3.00 pm

Where: In the comfort of your own home using your computer and ZOOM

Please contact the Normanville Natural Resource Centre on 8558 3644 to book your place for this FREE chat!

## National Tree Planting Day Sunday 2nd August

We will be going ahead with tree planting on 2nd August, we have lots of seedlings to be planted. At this stage I can not tell you where we will be planting but it will be either at Bungala Park or in the Normanville Dunes. I am asking for expressions of interest so we can organise our volunteers to comply with the restrictions

imposed at the beginning of August. Unfortunately, it looks as though we will not be able to return to the centre for a 3 course lunch, but I am trying to find different ways of providing some refreshments after the event. Please let me know if you are interested in attending, then I can send you out more details nearer the date!

**national tree day**  
PLANET333 TOYOTA

**SUNDAY  
2ND AUGUST**

**10.30 AM—12.30 PM**

**PLEASE REGISTER  
INTEREST ON  
8558 3644 OR EMAIL:  
admin@nnrc.com.au**

Organised by  
Normanville Natural  
Resource Centre

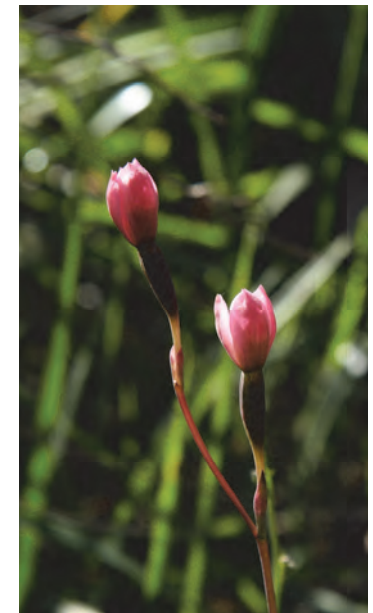
## Wild Orchid Watch Is...

a national citizen science project designed to collect, record and share scientific information about Australian native orchids.

You can install the Wild Orchid Watch (WOW) app on your mobile device, simply by typing in your internet browser: [app.wildorchidwatch.org](http://app.wildorchidwatch.org) and follow the prompts. The WOW app is a progressive web app, so it sits on the web not in the app store but looks just like a regular app once installed.

The WOW project is a custom app which feeds data directly to iNaturalist. Orchid observations collected using the WOW app are identified, managed and stored by iNaturalist. If you already have an iNaturalist user name and password, brilliant! You can use this when logging into the WOW app. If not, you will be prompted during the WOW app sign-up to follow a few simple steps to create an iNaturalist username and password. The WOW app will put an icon on your home screen and after the initial signup you can

always log in to the WOW app via the icon. Download this free app now and start native orchid hunting!



## Weed of the Month brought to you by Cape Jervis Coastal Community Group

### Soursob

(*Oxalis pres-caprae*)

(Photos: L. Cousins; patch of soursobs in bushland; leaf; flower)

We've all seen huge tracts of this weed in gardens, on roadsides, in reserves. In fact, just about everywhere! Originally introduced as a garden ornamental, soursobs certainly introduce a lot of bright yellow into the garden over winter/spring, with those prolific clusters of flowers... just a pity it is SO invasive! A significant environmental weed in S.A., it seems to take over suburban gardens and wastelands for several months of the year. It isn't enough to rip the fleshy plant out. Underground, there is a tuber-like

root, and bulbs and bulbils that persist from year to year. The plant reproduces from these and one plant can produce 10-50 bulbils each year. So you need to be persistent yourself to eradicate these weeds! Grubbing out is difficult because the small bulbils can be left behind, or spread by the soil movement. A systemic herbicide such as glyphosate needs to be used so that the poison gets into the root and kills the bulb. Start spraying when flowers appear for best result. Be prepared to spray two or three times a season, and over several years if you really want to control soursobs. Start in a small patch that you see often, or through a window, to ensure success and stay motivated.



### Join us on Facebook

- NNRC  
- <https://www.facebook.com/NormanvilleNaturalResourceCentre>
- Veggie Swap  
- <https://www.facebook.com/NormanvilleVeggieSwap>
- Recreate  
- <https://www.facebook.com/NormanvilleRecreateProgram>

**Bandicoot Recovery Action Group**  
- <https://www.facebook.com/BandicootRecoveryActionGroup>  
**Wendy White - Coordinator**  
Ph 8558 3644  
Email  
[admin@nnrc.com.au](mailto:admin@nnrc.com.au)  
Website  
[www.nnrc.com.au](http://www.nnrc.com.au)  
3/50 Main Street,  
Normanville



The Normanville Natural Resource Centre is funded by the Hills & Fleurieu Landscape Board.

## The 'sweet girl gospeller'

Although still in its infancy in Australia in the 1870s, the Bible Christian Church was becoming more formalised and minister-centred, and education was increasingly important, as was the effort to pay off chapel debt. The first Bible Christian Chapel in the Bald Hills area was in Mr Nosworthy's paddock, about 200 yards west of the Wesleyan Chapel. The Bible Christian Chapel, built in great haste, was opened before the ceiling was up or the walls plastered. However, a stone was placed in the walls bearing the inscription 'Bible Christian Chapel 1859 - the first chapel built in these hills'. This church served its community for more than 10 years before it was demolished and even the foundations dug up. The stones and other useful materials were carted to Inman Valley to be used in the present Uniting Church, which opened in 1871.

That occasion was a milestone. The preacher, Miss Serena Thorne, was not only a female, but she also attracted an overflowing congregation on opening day. However, on the same day there was a violent thunderstorm which was attributed by some to be the judgement of God for having engaged a woman preacher.

Her grandfather had founded the Bible Christian denomination and Serena took up the 'calling' at age 17. From 1861 in Devon and Cornwall's Bible Christian circuits the 'sweet girl gospeller' drew crowds and converts, attracted by her persuasive, vivid oratory, unclouded faith and 'compassion



for souls'.

The excitement, novelty and controversy surrounding the arrival of an attractive young woman preacher who drew hundreds to her meetings cannot be underestimated. After arriving in Australia in 1865 in company with her brother, Serena Thorne initially preached in Queensland until she was invited to Melbourne the following year.

At the invitation of Chief Justice Samuel Way and Dr Allan Campbell, Serena arrived from Victoria on Thursday 19 May 1870, where she had been on the Camperdown circuit. She was met at Port Adelaide by Rev. and Mrs James Way and Rev. and Mrs Lloyd, who gave her a warm welcome when the *Aldinga* berthed at Port Adelaide at 7pm. Samuel Way had lent his carriage for the occasion and the party travelled to the home of James Way's son-in-law Dr Campbell, on North Terrace. That night Serena wrote in her diary:

*'Pray my coming here may result in the salvation of many souls ... I need more of the quickening breath of Pentecost. May the God of Horeb answer me with fire?'*

The following Sunday, Serena preached for the first time in South Australia at Adelaide Town Hall to more than 2000. Many were turned away. She was described in the Register on Monday 23 May: *'Her manner is calm and self-possessed; her enunciation clear and distinct; her language flowing and correct and her illustrations drawn from life, natural and forcible.'*

For the next two weeks Serena proceeded on the country circuits including Happy Valley, Willunga, Clarendon and Port Elliot, Eyre's Flat and McLaren Vale. The Port Elliot circuit thought it was an ideal opportunity to lay a foundation stone for a new chapel at Hindmarsh Valley, which Serena did on Thursday afternoon, 1 December 1870. She attracted a large crowd and preached an eloquent sermon on Psalm 72:17. As neither the chapel nor schoolroom were large enough to accommodate the number present, the service was conducted in the open air. Afterwards 300 sat down to tea when Rev. J Counter, J Foster and Charles Hodge addressed them. That day, Serena recorded in her diary: 'I am told that scores have lost their prejudice against female ministry by this visit of mine.'



296

However, she was forced to face reality when, a few days later, on 4 December when she was at Normanville, she wrote:

*'I received an anonymous letter last eve, quoting those passages in Timothy and Corinthians. I suppose the clever individual thought to frighten me. Today a number of the same sorts were strewn all along the road between Yankalilla and here. They have done no harm. I pray that God would vindicate my cause himself today from those bitter tongues.'*

As the heat of summer was ripening the wheat in the Yankalilla circuit some farmers had already begun 'patching' (harvesting ripe patches with the sickle) but on 6 December 1870 nothing seemed to keep 200 people away from the Dairy Flat Chapel to hear Serena Thorne preach. The place was packed with as many outside as inside the chapel, and the pulpit moved to the door so those outside could hear.

During Serena's circuit to Auburn she again met Rev. Octavius Lake, a former admirer whom she had known at Shebear College, Devon. Serena had no intention of settling in the colony, or of marrying, but being reacquainted with Rev. Lake, she was torn between love and duty. She finally accepted his proposal of marriage when he vowed approval of female preachers, and they were married in Samuel Way's 'Morchard House' house at 8pm on 2 March 1871 by Revs Way and Roberts. Serena and Octavius served the church faithfully from that day as husband and wife, often sharing preaching appointments. They had seven children but only one survived early childhood. Serena preached and helped the needy in her husband's circuits.

Because she believed sexual equality to be 'the original design of the Creator', Mrs Lake supported women's suffrage and in July 1888, seconded the motion founding the South Australian Women's Suffrage League, and was elected to its council. In August 1889 she was appointed 'colonial organiser and

suffrage superintendent' of the Woman's Christian Temperance Union and shaped the union's commitment to women's suffrage. She was foundation president of the Bible Christian Woman's Missionary Board, and from October 1892 superintendent of evangelists. She died on 9 July 1902 of peritonitis after an operation for cancer. Her husband and daughter survived her.

— Lorraine Day

**The Yankalilla & District Historical Society Inc.** normally meets on the second Monday of the months of September, October, November, February, March and April, at 8 pm at the Council Chambers. However, due to Covid-19 guidelines, there are currently no meetings.

*Pictured: Serena Lake (nee Thorne), 296, Inman Valley Bible Christian Methodist Church*

## Annual General Meeting Yankalilla Historical Museum

Sunday 9th August at 2pm at the Visitor Information Centre.

### Guest Speaker

Pat Uppill talking about the Mayfield/Jagger family and early history of Bald Hills and Torrensvale areas.

All welcome afternoon tea provided.



**YANKALILLA  
VET**

**OPEN 6 DAYS**

**8558 3777**

83 Main Street, Yankalilla



**Yankalilla Plumbing  
& Gasfitting**

**Mark Oliver 0418 836 473**  
markoliverplumbing@hotmail.com

## Carbon Monoxide Poisoning Warning

Tuesday, 16 June 2020

South Australians firing up their heaters to escape the winter chill are being warned about the dangers of carbon monoxide poisoning, with people likely to spend longer periods indoors during winter months.

The Department for Health and Wellbeing's Scientific Services Branch Director, Dr David Simon, said it is important to look for the warning signs of carbon monoxide poisoning when using common heating appliances, particularly as people are spending more time at home due to COVID-19.

"As we head into the colder winter months, people at home may be running gas heaters longer than usual which can lead to accidental carbon monoxide poisoning," Dr Simon said.

"Carbon monoxide is a silent killer because it has no taste, smell or colour, and heating appliances that use gas, wood, oil or kerosene can put you at risk of exposure to the poisonous gas.

"The gas can build up in poorly ventilated rooms and people can inhale it without even realising, so it is important to make sure that there is adequate ventilation with fresh air.

"In South Australia, there have been 15 emergency department presentations from carbon monoxide related poisoning in 2019-20, and our concern is that number could rise as more people stay at home and use gas appliances."

SA Metropolitan Fire Service Community Engagement Commander, Phil Crossley, said people should be aware of the dangers of carbon monoxide and know how to use appliances safely.

"Every cubic metre of natural gas needs 10 cubic metres of air for

complete combustion, and LPG requires 24 cubic metres of air," Commander Crossley said.

"Too little air causes incomplete combustion which produces carbon monoxide, that's why it is important to never use heaters or appliances marked as 'outdoor use only' for heating inside or in any fully enclosed area that doesn't have adequate ventilation.

"This includes LPG and patio heaters, as well as barbecues and fire grills that use charcoal briquettes, which should never be used indoors for warmth or cooking."

Technical Regulator from Office of the Technical Regulator, Rob Faunt, said appliances should be regularly maintained and serviced to avoid the dangers of carbon monoxide poisoning.

"People should ensure all gas appliances are serviced by a licensed gasfitter at the manufacturer recommended service frequency or at least once every two years," Mr Faunt said.

"It is recommended that appliances are checked for correct installation, including adequate ventilation, and are not adversely affected by any mechanical air movement systems, such as exhaust fans or air conditioning distribution systems." Babies and young children, pregnant women, the elderly and immobile, and those with asthma or other respiratory illnesses are most vulnerable to carbon monoxide poisoning.

Symptoms of carbon monoxide poisoning can include persistent tiredness, shortness of breath, headaches, nausea, vomiting, chest pain and loss of consciousness.

Anyone who experiences symptoms of carbon monoxide poisoning should seek medical attention

## HAY for SALE

- Oats & Vetch
- Wheat & Vetch
- Oaten



Rounds & small squares available



Ph: Chris 0417 833 073

immediately, and in the case of a medical emergency always dial triple zero (000).

SA ED presentation from carbon monoxide related poisoning:

Year	Cases
2014-15	28
2015-16	29
2016-17	15
2017-18	31
2018-19	24
2019-20 (YTD)	15



Carbon Monoxide Kills  
Be CO Aware

Still open under Covid-19 safety guidelines



hair, nails & beauty

Delamere

Open by appointment

0400 728 018  
or on Facebook

HAIR, BEAUTY,  
& WELLNESS

## Native Animal Rescue

Available 24/7 for all native animal rescues call Sharyn Braithwaite

0437 856 175

Manna Gum Refuge. U14642 Fauna Permit

## Koala Hotline 8289 0896

Fauna Rescue of SA Inc.  
Kate 0410 678 954

## Native Bird Rescue Parrots & Birds of Prey

Phone Maggie  
(Permit F00457)

0417 819 698

pumpils@bigpond.com

## NORMANVILLE REMEDIAL MASSAGE

Robyn Cleggett  
Ph 0410781801

Remedial Massage  
Deep Tissue/Sports  
Myofascial Release  
Relaxation

Mobile Appointments  
Health Fund Rebates

## Dental Surgery

Dr Alexander Stabolidis  
General and Cosmetic  
Dentistry

Dr Adrian Baggio  
Dental Prosthetist

Phone

8558 2098

Tuesday to Thursday

1a Mary Avenue,  
Normanville

Adjacent Mitre 10

or contact the

Victor Harbor Dental  
Surgery

open Monday to Friday on  
8552 7711

Adjacent Coles Victor Harbor

Participating Provider

For Better Health  
More for Teeth program  
we're family

## Strutt'n in Style

MOBILE PET GROOMING

Lynette Lee  
(Cert IV Veterinary Nurse)

Ph: 0438 725 486

HYDROBATH / BLOW DRY  
CLIPPING  
PET MINDING  
NAILS - EARS - EYES  
PUPPY PRE SCHOOL

Email: struttinstyle@gmail.com

**Yankalilla Family Pharmacy**

Ph 8558 3254 107 Main South Road

9am-5.30pm Monday-Friday  
9am-12.30pm Saturday

**Prescription Deliver Service available**

Please call for details



discount prescriptions

**Myponga Family Pharmacy**

Ph 8558 6208 55 Main South Road

Monday, Tuesday, Thursday & Friday from 9am-5.30pm, Saturday 9am-12.30pm.  
Closed Wednesday & Sunday.

**Calling all Yankalilla young people, Mission Australia's Youth Survey 2020 is open**

**M**ission Australia's *Youth Survey 2020* is now open, with the charity extending the opening period to encourage as many young people as possible aged 15-19 in Yankalilla and across South Australia to have their say. Now in its 19th year, the Mission Australia *Youth Survey* is the largest online survey of its kind in

Australia, and provides an important annual snapshot into the experiences and views of young people across Australia.

This year in the midst of the COVID-19 public health challenge, Mission Australia says the *Youth Survey* continues to be an important platform for young people to have their voices heard.

Mission Australia's State Director for South Australia Mychelle Curran said:

"In this rapidly changing world, young voices matter. Now more than ever, we need to hear from young people in Yankalilla and across South Australia about the issues that are affecting them. During this period of unprecedented changes, it's important that young people still have meaningful opportunities like the *Youth Survey* to share their thoughts, concerns and aspirations to shape policy and service changes that are important to them.

"In times of increasing uncertainty it is crucial we take the time to listen to what young people have to say on issues that affect them, their networks and our nation.

"We hope that during a time when so many young people will be self-isolating, that they could spare 15 minutes of their time to participate in the *Youth Survey*.

"Last year, we heard that many young people felt they did not have the avenues to speak up on the issues that matter to them. The *Youth Survey 2020* provides a forum for young people to highlight their personal aspirations and concerns, and express the issues they think are important in Australia today."

The 2019 *Youth Survey* was completed by more than 25,000 young people aged between 15 and 19 years, including 3,242 young people in South Australia. Last year, young people from South Australia nominated *mental health, the environment and equity and discrimination* as the most important issues facing Australia today. It also found that nearly half (49.0%) of young

people from South Australia felt they have a voice in public affairs *none of the time*.

"In a climate where young people are actively seeking out opportunities to make their views known, the *Youth Survey 2020* offers a safe and reliable platform to speak up. Their valuable insights provide up-to-date evidence to inform advocacy and policy change on the issues that affect their lives," said Ms Curran.

This year, the survey will continue to have a focus on mental health and wellbeing, with a further look into how young people seek help. The *Youth Survey* will also ask new questions around discrimination and transition to employment, along with financial concerns and exclusion.

"The *Youth Survey 2020* is the biggest survey of its kind and is an important source of information for organisations, governments, families and individuals to get a picture of what our young people are thinking and experiencing, and how to best support young South Australians as they transition into adulthood.

"Young people can record their responses online, either through arrangements with participating schools or groups, or individually through our website. We are mindful that at this time, schools are having to adapt tremendously and we are thankful for all that our education sector is doing for our young people, and acknowledge that this may affect the participation in our survey.

"At a time of increased physical distancing and self-isolation, we're also encouraging sports teams, community youth groups, religious groups and community service organisations to communicate to their young people to get involved in the *Youth Survey*," said Ms Curran.

Mission Australia's *Youth Survey 2020* is open to all young people aged 15-19 years-old who are living in Australia. To take part in the survey, visit [www.missionaustralia.com.au/youthsurvey](http://www.missionaustralia.com.au/youthsurvey). Share the word using #YouthSurvey2020

This year, the survey will be open for an extended period of time so as many young people as possible can participate.

The survey **closes on the 14th August 2020**, with results to be analysed and released before the end of the year.



**Normanville Pharmacy**



**With Covid-19 Normanville Pharmacy can offer you home deliveries.**

**Leave your prescriptions at the pharmacy, and ring before 1pm for same week day delivery at no charge.**

**We are happy to take payments over the phone**

**Are you aware of all the services we offer at Normanville Pharmacy?**

- We are registered to administer certain vaccinations including Influenza Vaccinations and Whooping Cough Vaccinations
- We offer a medication packing service to help you manage your medications

**Come in store to discover all the amazing services we can offer!**

Phone: 8558 3446

85 Main Street, Normanville

**Open 7 days a week!**

Opening hours: Monday-Friday 9am-6pm,  
Saturday 9am-4pm, Sunday 9.30am-1pm



**Hair Waxing Ear Piercing Spray Tanning**

Book online with us using the Fresha app

**8558 4031**

Shop 98B Main South Road, Yankalilla

afterpay Now available

**NORMANVILLE PHYSIOTHERAPY CLINIC**

91 Main South Road, Yankalilla

**Ph: 8558 3460**

**BRIDGET HAINS**

Physiotherapist, Bowen Therapist

**Assessment & treatment of...**

Back & neck problems, sporting & work injuries, headaches, arthritis, hands, women's health

Doctors referral not essential  
Concessional rates available

Follow us on...



# SOUTHERN FLEURIEU FAMILY PRACTICE

Trusted Care for Over 15 Years  
ALL PATIENTS WELCOME


## OUR DOCTORS

Dr Brenton Martin, Dr Charles Christie, Dr Kin Lau, Dr John Law, Dr Roumi Spassova,  
Dr Tom Shaw, Dr Audrey Salleh, Dr Branimir Rajcic, Dr Paul Worley, Dr Rajpal Poonla,  
Dr Meiyen Leng, Dr Angela Knight, Dr Gerard Cobiac, Dr KC Hor.

\*Opening hours are subject to doctor availability and some terms and conditions apply to practice bulk billing.  
Please refer to our website or phone the practice for more information.

**OPEN 6 DAYS**  
*Quality Health Care*  
**BULK BILLED!**

 **8558 0111**  [www.sffp.com.au](http://www.sffp.com.au)

 175 Main South Rd, Yankalilla SA 5203



## PRACTICE NEWS



**DR AUDREY  
SALLEH**

Originally from Malaysia, Audrey migrated here in 1997 to commence her medical degree and graduated locally from University of Adelaide with MBBS in 2005. She has spent her years working in various positions at The Queen Elizabeth Hospital, Lyell McEwin Hospital and Womens and Children's Hospital. She has particular interests in Women's Health, where she has spent many years working as an Obstetrics and Gynaecology Registrar. She is also interested in Geriatric Medicine and enjoys looking after elderly patients in nursing homes and communities. When not at work Audrey is a busy wife and mother to 3 beautiful children who keep her hands full. She also enjoys baking and cooking in her free time.

## HEALTH NEWS

### NATIONAL DIABETES WEEK JULY 12-18

'Taking action for your health and wellbeing. Stay connected with your healthcare team.'

Approximately 2 million Australians are at risk of type 2 diabetes. Up to 58% of type 2 diabetes can be prevented or delayed through healthy lifestyle changes.

Prevention is about knowing your risk and making the lifestyle changes that can delay or prevent type 2 diabetes.

**Check your risk of type 2 diabetes with your local GP!**

In addition, help reduce your risk of type 2 diabetes by:

- Eating a healthy, balanced diet
- Limiting takeaway and processed foods
- Regularly exercising
- Maintaining a healthy weight
- Managing blood pressure and cholesterol
- Quitting smoking
- Limiting alcohol intake

For more information make an appointment to see one of the doctors at Southern Fleurieu Family Practice. Phone 8558 0111.

Visit [www.diabetessa.com.au](http://www.diabetessa.com.au) to learn more.



## 100th birthday of truck that led show parade

The Yankalilla Show has been cancelled this year due to Covid-19 which is unfortunate as it is the 100th birthday of the truck that once led the parade on show day. It was hoped that the truck would be making an appearance for the occasion.

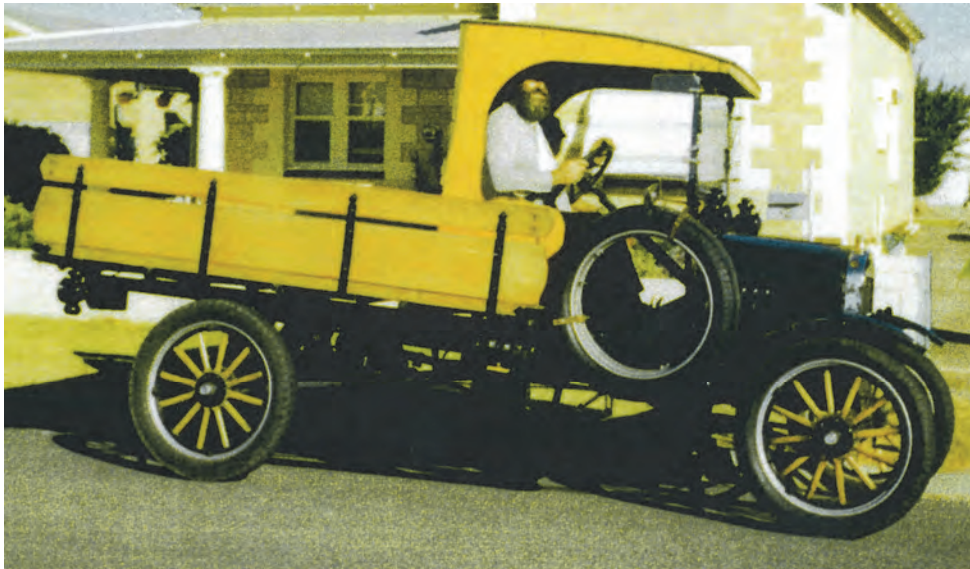
The 1920 Model T Ford 'C Cab Truck' led the Yankalilla Show parade until 1974. A former Carrickalinga resident, David Pettifor, bought the truck in 1973 in Yankalilla. Previously, it had been rebuilt from found pieces in 1958 by Kingsley White. The engine and gearbox are both from 1920 and the engine number indicates the birthday would be about - the late shift.

David, who now resides in the Barossa Valley, re-restored the truck in 2018.

David still plans on bringing the truck back to town later this year for those interested in seeing it and is in the process of working out the details. Possibly it will be in November and we will let you know when we have confirmation.

Can you remember the parades? Do you remember the truck? Do you know anyone who might know more about its history?

If you can shed some more light on the truck's history, David would love to hear from you. His phone number is 0416 095 095.



Phone Alana on  
**0402 781 548**  
Clip to your specification, no caging,  
located at CARRICKALINGA  
<http://shaggybusiness.com.au/>

**SHAGGY BUSINESS**  
PROFESSIONAL DOG GROOMING

## Yankalilla Red Cross

Next meeting will be held on Monday August 3<sup>rd</sup> at 1.30pm in the Yankalilla Uniting Church Hall. Our Morning Tea and our Trading Table scheduled for September and October have been postponed until 2021.

For further enquires please ring Coralie on 044 787 0730.

Keep warm and safe.



## Early History of the Yankalilla Red Cross Branch

First Branch of Red Cross formed and operated in Yankalilla from 1914 to 1918. Only data available was that meetings were held at Bungala, the home of the President, Mrs Frank Rymill.

The second branch was formed and operated from 1939 to 1945. At a meeting at Mrs L. Stones a decision was made to form a branch and so another meeting was called at the Methodist Church, Torrens Vale where the Torrens Vale Red Cross Branch was formed and officers elected. The President was Mrs L Stone and Secretary Mrs G Tavener.

The Branch won the Baby Competition in 1942. The Baby was John Croser. The president, Secretary, Mother, Baby and Grandparents were entertained at Government House to afternoon tea by Lady Muriel Barclay-Harvey. Afternoon tea consisted of cherries served on a plate (austerity rations) with a knife and fork to eat them.

In 1944 the Branch had a State win with their Queen, Miss Heather Tavener. The Queens were presented to Lady Napier at the Adelaide Town Hall.

Masses of knitting were done and tropical pyjamas made.

The first Saturday of each month a stall was held in the main street of Yankalilla.

The P.O.W. group sent £1 a week to Head Office for food parcels for Servicemen.

Dances were held and 1/- was charged if there was no supper and 2/- if supper was included.



**encounter bay dental**

Giving the Fleurieu a reason to smile

-  **Dentures**
-  **Childrens dentistry**
-  **Invisalign**
-  **Sleep apnoea**
-  **Implants**
-  **Hygienists**
-  **Payment plans**

**Ph. 8552 92 99**



  
Members First Platinum  


  
More for Teeth program



  
Department of Veterans' Affairs













[encounterbaydental.com.au](http://encounterbaydental.com.au)

**Ph. 8552 92 99**

**SIAM SEA CHANGE**

**New location**

**Studio 11 Carrickalinga**

**Traditional Thai Massage**

Nails, Waxing, Eyelash Extensions  
Eyelash & Brow Tinting, Hair Cuts  
Deluxe Pamper Package

Open Fri, Sat, Sun, Mon

**Same prices as before**

For Appointments please call

**0411 035 848**



# GREATER FLEURIEU

## MEDICAL CENTRE

New patients welcome



**Dr Mizan | Dr Merz | Dr Ramsey | Dr Wolf**

All patients  
**BULK BILLED**  
(Gap applies for minor procedures)

**OPENING HOURS**  
Monday - Friday 8.30am - 6pm  
(last appointment 5.45pm)

★ **Our Surgery Welcomes Onsite ...** ★

- ★ Orthopaedic surgeon **Dr Anthony Samson**
- ★ Physiotherapist **Declan Osborne**
- ★ Psychologist - **Belinda Sanders**
- ★ Diabetes Educator **Desiree Matthews**
- ★ Adelaide Body Scan
- ★ Hearing Australia
- ★ Abbott Pathology



82 Main Street  
YANKALILLA SA 5203  
PH 8545 0185  
[greaterfleurieumedical.com.au](http://greaterfleurieumedical.com.au)

[facebook.com/greaterfleurieumedicalcentre](https://facebook.com/greaterfleurieumedicalcentre)

### **ACUPUNCTURE**

**Chinese Herbal Medicine**  
**Acupuncture**  
can treat a variety of symptoms of diseases  
**NOT JUST PAIN!!!**

**Dr. Ka Che Herman LUM**

M App Sc (Chinese Herbal Medicine)  
BSc Adv Dip (Acup) (Honour)

National Registered Doctor of Chinese Medicine Practitioner

**Normanville** 1 Mary Street, SA 5204

**0431 915 175**

[www.kcacupuncture.com](http://www.kcacupuncture.com)

All Health Funds accept WorkCoverSA

### normanville central **physiotherapy**

spinal & sports injury clinic

1 Mary Street (Box 901), Normanville SA 5204

**Steven Bois**  
Ba App Sc (physio)

- |                    |                   |
|--------------------|-------------------|
| Neck Pain          | Back Pain         |
| Headaches          | Sporting Injuries |
| Posture Assessment | Work Injuries     |
| Rehabilitation     | Chronic Pain      |

**Ph: 8558 3031**

**Mon - Fri 9am - 5pm**

## Through The Lens Competition

Applications are open for Seniors Card members to get creative and enter the 2020 *Through the Lens* photographic competition.

Office for Ageing Well's Manager of the South Australian Seniors Card program, Evlynn Hayes, said the annual competition forms part of this year's International Day of Older Persons celebrations.

"Seniors Card members love to share their stories, and other members love to hear them. Photos speak a thousand words," Ms Hayes said. "Through the Lens is a wonderful opportunity for Seniors Card members to share photos they have taken, which reflect their lives and interests.

"Age is no barrier to creative expression and this popular annual competition encourages older South Australians to learn new skills, develop new interests and discover new ways to express their individuality.

"With the COVID-19 pandemic affecting so many aspects of our lives, the 2020 *Through the Lens* competition is no different. Whilst it may be more difficult to get out and about to take photos for submission in this year's competition, you can go back through your catalogue and choose suitable photos, or get creative in your home or garden."

Finalists will receive prizes including a large framed copy of their successful photo thanks to major sponsor, Atkins Photo Lab. The overall winner's photo will also grace the cover of the 2021 Seniors Card Discount Directory.

Ian Patterson, the *Through the Lens* 2019 competition winner, said it was a fun and challenging way to encourage seniors in South

Australia to learn and get creative.

"As with many aspects of life, success in photography often requires patience, dedication and even a little pain or discomfort," Mr Patterson said.

"I have been diving for more than 40 years but it is really only since I started underwater photography that I have really been observing the natural environment closely and even seeing things in the photos that I was entirely unaware of previously.

"Photography is a really great way to further explore your interests and share your experiences with others, and encourages you to go to places you might not otherwise visit."

The *Through the Lens* competition **closes on Friday 31 July**, with finalists chosen across five categories – landscape and nature, active ageing, artistic photography, meaningful connections and portrait.

During August, members of the public can also vote for their favourite in the People's Choice Award.

Winners in all categories including the People's Choice Award and overall winner will be announced on 1 October.

For more information, contact the Seniors Card Unit in the Office for Ageing Well on **1800 819 961** or visit [www.sa.gov.au/seniorscard/photo](http://www.sa.gov.au/seniorscard/photo)



# We've Always Been Wearing Masks

**M**asks have been one of the features at the core of our Corona World. Increasingly we see them displayed in various shapes, colours and forms but we are gradually getting used to them. Initially they were worn reluctantly - and their value debated by the experts - but as the lockdown has continued, I suspect many have chosen to wear them to show their support in stopping the spread of the little beast. But it feels like we might be getting closer to not needing them. It might still be a little time ahead (unless we plunge backwards again) but the smell is in the air. We are girding the loins. We are ready to get the economy going. We are ready to get back into real life.

The big question for Men is whether they step back into wearing the metaphorical mask they wore Pre-Covid. These are the emotional masks we hide behind as Imposter Masks, to make sure the world doesn't discover who we really are. It's our way of hiding our secret vulnerability. We've needed them at home, especially when Zoom is staring us in the eyes, but mainly we've taken a small sabbatical. A breather.

Stepping back into the big world will be Men's biggest challenge. Have we been able to change enough during this shut down to learn important lessons to take forward with us? We have no idea of how the world is going to change but change it will. Have we had time enough to reflect on who we really are? What, at the core, drives us? Have we discovered that we're all in this together - the whole world - and does this make us more united? More humble? More caring? More generous? More open?

Women will definitely want to know all of these things. They have semblances of masks but on the whole they are more willing to drop them and genuinely connect, especially with their female confidants. Sadly, men have been driving forward like bats out of hell over recent decades as the pie seemingly gets bigger and their opportunity of getting a massive slice becomes their sole modus operandi. Why do Australian men in midlife commit suicide 5 to 6 times as often as Australian women of the same age? It's not because the slice is bigger or tastier. It's because they have locked out everybody else. Metaphorically it's not always a mask - alternatively it can be a mirror which surrounds men's heads and forces them to see only themselves at all times. It's a dangerous way to hide from the world, especially when it closes off people with genuine concern for your wellbeing, including family and friends.

Brendon Gale, CEO of the Richmond Tigers, spoke at a function I attended late last year. Why had the Tigers become a major force in the AFL over the last three years? Boiled lollies to chocolates. Gale reckoned it wasn't just about players becoming fitter, faster and stronger than the other Clubs. It was a question of them removing their masks when they joined the Club and giving themselves permission to be their authentic selves. This lends itself to connecting with others. To being a real team. It shows. The way they play and the Flags they win.

What does "our authentic selves" really mean? In truth, it's hidden so deep inside all men that it's hard to know. The Imposter Mask I was referring to causes us to fake who we are and worry like hell that we never get found out. It also comes in many models, shapes and sizes, all ready to come out as required. In reality, we wear a mix of masks throughout our waking hours. Sometimes it's hard to know which one to put on.

In his 2017 book *The Mask of Masculinity*, former American professional sportsman Lewis Howes talks about the mask. He exposes the ultimate emptiness of the Material Mask, the man who chases wealth above all things; the Aggressive Mask, worn by the man who wears it as a proof of manhood; the Invincible Mask, used to convince the world we feel no

pain, no fear. All of these masks are about emptiness. A sense of "lack". And of course the Sexual Mask. No explanation needed.

My father was all about the Stoic Mask, the "stiff upper lip" and the "big boys don't cry" Mask. It took me many years to discover I had an empathy button and when I pressed it, a whole new world opened up.

As Oscar Wilde said, "Be yourself, everyone else is taken."

If nothing else, during lockdown we have had a chance to slow down and reflect upon our lives. Of course, I absolutely acknowledge the reality for those who have suffered unimaginable setbacks, including job loss, family crises, mental health issues and family deaths from Covid19. To mention only a few. But even for these people, men and women, young and old, maybe it's still a chance to reconsider the false values that we had in our lives.

So, as you emerge, taste freedom like you never have before. Freedom of knowing that Covid brought us all back to size, that we really don't have to prove anything to anyone. I read a beautiful blog today on nature and the natural world. Let's admit it - we've really missed it.

To sniff the air, to open our lungs, to breathe deeply is at the core of our humanity. As well as hopefully being able to ditch the medical masks, we'll also recognise the detrimental negative effect that the emotional masks have on our health.

Albert Camus said, "in the midst of winter, I finally learned that there was in me an invincible summer."

**Gareth Andrews**

Executive Director and Founder

**The Life Again Foundation**

<https://www.lifeagain.com.au/>



*Gareth is also a former Geelong and Richmond footballer and football commentator. Article reprinted with permission.*



**RURAL & DOMESTIC FENCING CONTRACTOR**

- .POST DRIVING
- .CATTLE YARDS
- .POST & RAIL FENCING
- .NEW VINE YARDS & MAINTENANCE
- .HORSE YARDS & ARENAS
- .GOOD NEIGHBOUR & COLORBOND
- .POOL FENCING
- .CHAIN FENCING



**FREE QUOTES**

**PHONE DANIEL HAMLIN**  
**0420 238 323**  
**HOME/FAX 8558 2180**

**SERVICING THE FLEURIEU & ADELAIDE HILLS**



**Your local specialist in domestic pressure boosting and wastewater drainage**

**Contact us today to find out more**  
A: 16 Victoria Street, Victor Harbor  
P: (08) 8552 9796  
E: paul@fleurieupumps.com.au  
W: www.fleurieupumps.com.au





# Seagrass Loss from Yankalilla Bay

By Dr Elizabeth Gordon-Mills

Ruth Trigg's letter about degradation of Normanville Beach (YRN, June, 2020) spoke of sand and seagrass loss. I will discuss both of these issues.

## Seagrass loss

In 1949 the first systematic aerial photographs of South Australia were carried out, and these were continued at regular intervals. The attached 2 photographs compare the 1949 image with the current (March 2020) satellite image from Google Earth (note that the jetty was longer in 1949). Most striking is the general similarity of the outlines of plant cover in the two images taken 70 years apart. Over this period there does not appear to be widespread loss of cover, with minor changes to the outlines and internal densities, in some areas loss and in others expansion. The distinctive M-shaped sand feature north of the jetty is a clear marker, and may indicate historic loss of cover from when the jetty was used for loading produce etc. Note also that in 1949 there is a patchy area adjacent to the Bungala outfall, but this area has quite dense cover in 2020.

To get some idea of what really substantial seagrass loss is, go to Google Earth and scroll northwards until you come to the metropolitan coast of Adelaide north of the Patawalonga. You will see that there is almost complete loss of inshore cover, which I predicted in the early 1990s when I did a preliminary study of the area using aerial photographs.

However, we must not jump to conclusions about what comprises the plant cover. An underwater study by Simon Bryars (2014) showed that in Yankalilla Bay it is a mosaic of several species of seagrasses on the sandy areas and leafy brown macroalgae on the stony reef areas. Bryars used kayaking and diving to show that amongst the widespread healthy seagrasses there were areas of erosion where the seagrass appeared to be receding, leaving exposed reef which was being colonised by algae. He also discovered minor pockets of unhealthy seagrasses. However he found no selective loss of seagrass in relation to the outflow of the Bungala or the other two rivers north and south (Carrickalinga Creek and Yankalilla River respectively).

In addition to these data, there are anecdotal reports from people who have lived in the area from childhood that the seagrass habitat used to be much closer to the low tide line than it is now.

## What is going on?

Seagrass meadows are dynamic systems with areas of erosion and regrowth continually occurring as

part of the natural process. Here are a few known causes of seagrass loss:

1. The effluent from rivers can bring heavy silt loads after substantial rain events, but this is a natural process which happens with many river outlets unless there is a delta or marshy system to allow the silt to settle before it reaches the sea. The silt may temporarily hold back the growth of the seagrasses, but as long as it is only occasional, the seagrasses will recover without dying, since the silt will be washed away by the currents or sink into the substrate. The Bungala outfall appears to be such a system.

2. If there is a large nutrient load coming into the water (say from a sewage outfall), it may encourage the growth of epiphytic algae which can shade the leaves and kill them, but once again, this does not appear to be happening here. Although Bryars' photographs did show filamentous epiphytes, I will say as an algal specialist, I am pretty sure they are only seasonal species and not permanent.

3. Scouring can occur around permanent moorings, but there are no such moorings here.

4. Violent storms with high energy waves will scour the sandy substrate of the seagrasses causing them to be uprooted. If too many storms come too close in time, then there could be permanent damage. This may be happening here.

5. Fresh water upwellings. This was suggested as a possibility by Bryars.

6. Polluted runoff from roads and industry. Not applicable here.

It is not always possible to sort out the real reasons for any seagrass

loss, given the number of potential causes outlined above. As well we can't say for sure that any process observed at a moment in time will be repeated over a longer period unless ongoing observations are carried out. This has not happened in Yankalilla Bay, so we are still in the guessing game!

We need to be thankful that there is still fairly continuous cover, whether it be of seagrass or algae.

## Sand loss

Ruth described the seasonal movements of sand to and from the beach profile, as well as the northwards migration of sand along the coast. These are both natural events which we have very little power to change in the long run. (Sand loss will occur faster where there has been extensive building on the dune system as with metropolitan Adelaide, and it has been necessary to cart sand southwards for many years there to maintain local beaches).

Our sandy beaches are only here because at the end of the last Ice Age (10-15,000 years ago), there was a rise in the sea level to form Gulf St Vincent. As the sea advanced the waves eroded the rocks on the successive new coastlines to form sand. However during the last 4,000 years the sand supply from these offshore sources has declined to the point where virtually none is now being transported ashore to replenish the beaches and dunes. (SA Coastal Protection Board 1993).

So at Normanville we may be now dependent on replenishment of beach sand from further south in Yankalilla Bay down as far as Rapid Bay, but a large part of this

coastline is rocky. Ruth suggested that Wirrina Cove may have a deleterious effect on sand reserves further north. This is very unlikely given that Wirrina Cove is on the rocky shore, and although there is a tiny beach on the south west side of the harbour wall, the amount of sand movement impeded is insignificant.

We don't really know enough about the long term movements of sand in Yankalilla Bay to make accurate predictions about what the future scenario will be. Ruth is right in calling for more studies to be done on possible changes to Normanville beach, and what sort of contingencies may be needed in the future if erosion becomes more serious.

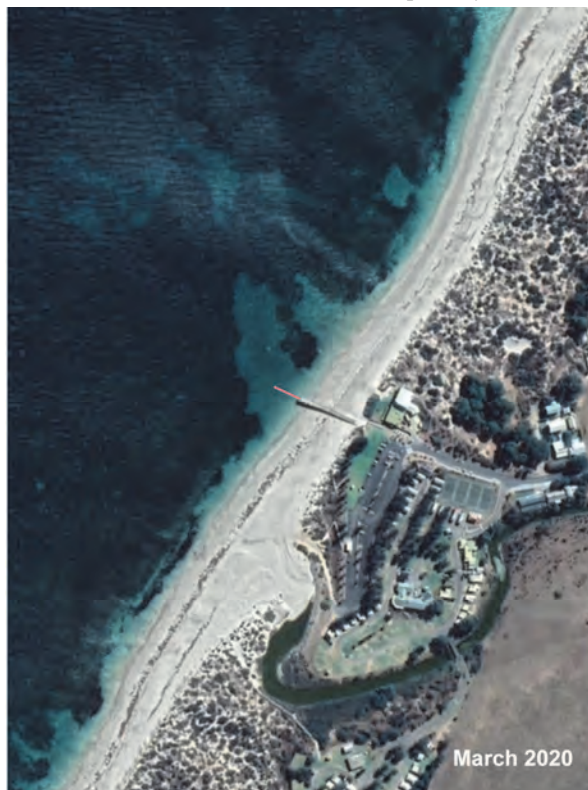
## References

Bryars, S. (2014) Nearshore seagrass and reef condition in Yankalilla Bay. Pp.1-40. Report to the Adelaide and Mount Lofty Ranges Natural Resources Management Board. South Australian Coastal Protection Board (1993) The Adelaide Metropolitan Coastline. *Coastline* No. 27 April 1993.

## Comparison of Normanville beach and nearshore waters:

March 2020 satellite image from Google Earth (left) with 1949 aerial photograph (right). The now removed extra length of the old jetty is shown on the 2020 photo by a pink line.

1949 Photography/Mapping Data supplied/copyright by Mapland, Department for Environment and Water



# Carpet & Tile Cleaning



**Impact Clean**

Wayne Gibbs 0400 151 414

admin@impactclean.com.au

Facebook: Impact Clean Normanville



- Wool fibre specialist
- Stain treatments & colour repairs
- Urine and odour treatments
- Upholstery & leather cleaning

Over 20 years experience  
Fully insured

Living in Normanville

**WE'LL BETTER THE  
LOWEST QUOTE AROUND  
- AND REFUND OUR FEES\*  
IF YOU'RE NOT SATISFIED,  
THAT'S THE SIMPLICITY  
GUARANTEE.™**

8552 1061  
79 Victoria Street  
Victor Harbor

\*Terms and conditions apply.  
See [simplicityfunerals.com.au](http://simplicityfunerals.com.au) for details.

**Simplicity  
Funerals**  
Simply Affordable.

# COPY • PRINT • POSTERS

Introducing our latest  
state-of-the art digital technology...

**ANY QUANTITY • ANY STOCK\* • ANY SIZE  
SAME RELIABLE MERCURY QUALITY...**

Using our full suite of copy, print and poster technology we have the capability to produce any size, any stock and any quantity for your projects.



## COPY

HIGH QUALITY BLACK &  
WHITE or COLOUR COPYING

**Perfect for Short Run  
and Fast Turnaround Jobs**



## PRINT

HIGH QUALITY OFFSET  
PRINTING SINCE 1974

**Perfect for Small, Medium  
and Large Jobs**



## POSTERS

UNCOATED AND COATED  
POSTER PAPER OPTIONS

**Perfect for Short Run,  
Custom Posters and Displays**

**MERCURY  
PRINTING**

QUALITY PRINTERS SINCE 1974

For a no obligation quote and  
to review high quality samples  
please contact Paul

**8382 4466**

UNIT 1, 20 ELLEMSEA CIRCUIT  
LONSDALE SA 5160

PO BOX 199  
MORPHETT VALE SA 5162

sales@mercuryprinting.com.au  
[mercuryprinting.com.au](http://mercuryprinting.com.au)

\*Suitability and availability of stocks  
may vary according to the project

**h & H** BARTEL  
& HALL

BARRISTERS  
SOLICITORS  
CONVEYANCERS

(08) 8552 3544

34 VICTORIA STREET,  
VICTOR HARBOR

**FOREST FLOOR**  
Enterprises Pty. Ltd.



**TREE SERVICES  
STUMP REMOVAL  
PORTABLE SAWMILL**

Tree Trimming and Removals

Stump Grinding

Portable Sawmill Service

Block Slashing

Mulch and Firewood

Slab and Timber Sales

Compact Loader and Tipper Hire

**Luke Blackburne**  
Qualified Arborist

Ph: 0409 984 301  
E: forestfloor333@gmail.com

Forest Floor Enterprises



**Your Local Tree Care Professionals** **TEXTBOOK**  
TREE SURGERY