

FOR LEASE - OFFICE BUILDING

2401-2425 James Street, Syracuse, NY 13206



52,508 SF AVAILABLE | 2-STORIES | 40 PARKING SPACES

BELLCORNERSTONE
Commercial Real Estate

FOR MORE INFORMATION:

Mark Bethmann

BellCornerstone

315.427.7676

mbethmann@bellcornerstone.com

Dan Lynch

BellCornerstone

315.498.1600

dlynch@bellcornerstone.com



LOOPNET LINK

www.BellCornerstone.com

PROPERTY OVERVIEW

2401-2425 James Street, Syracuse, NY 13206

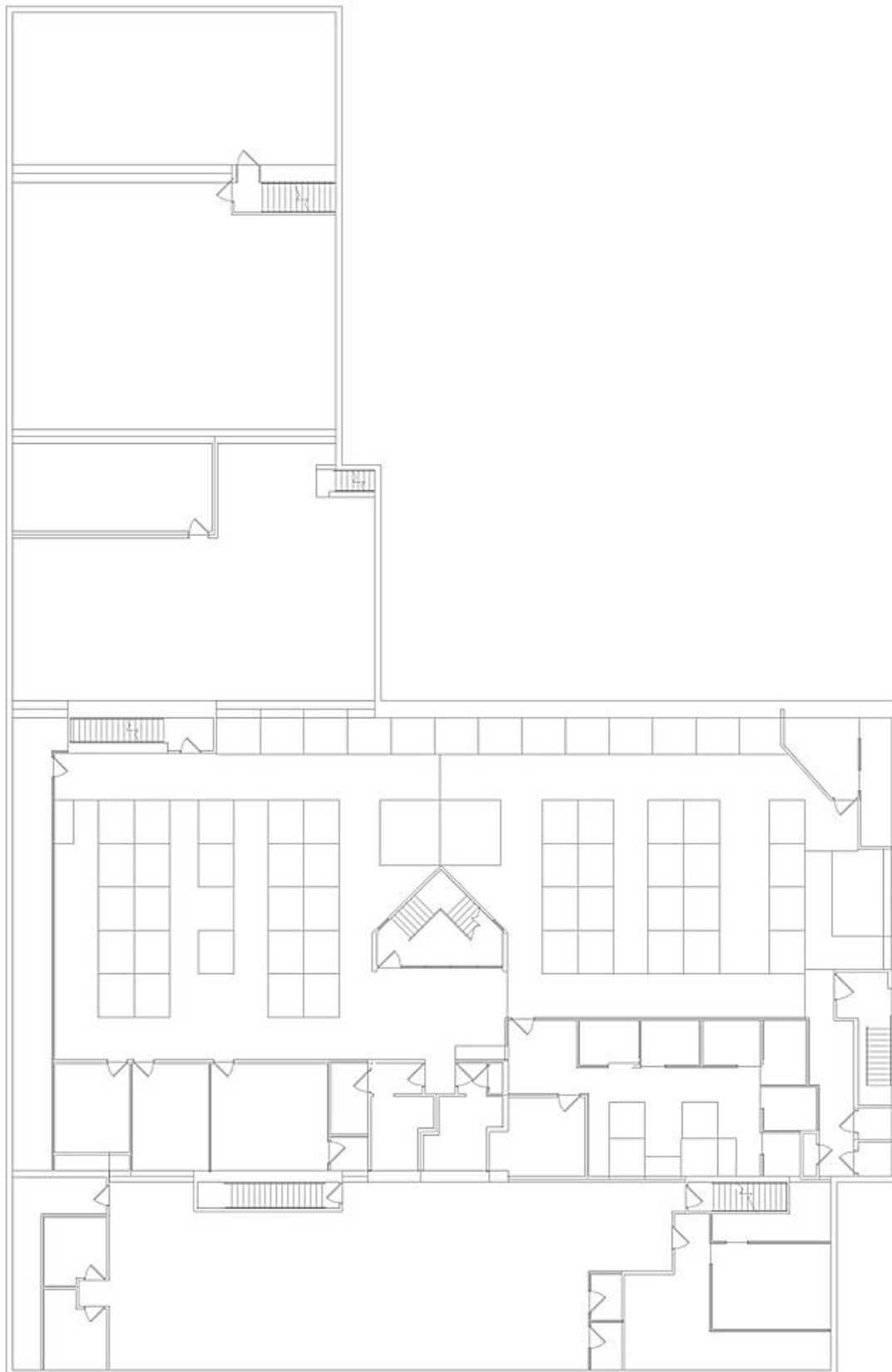


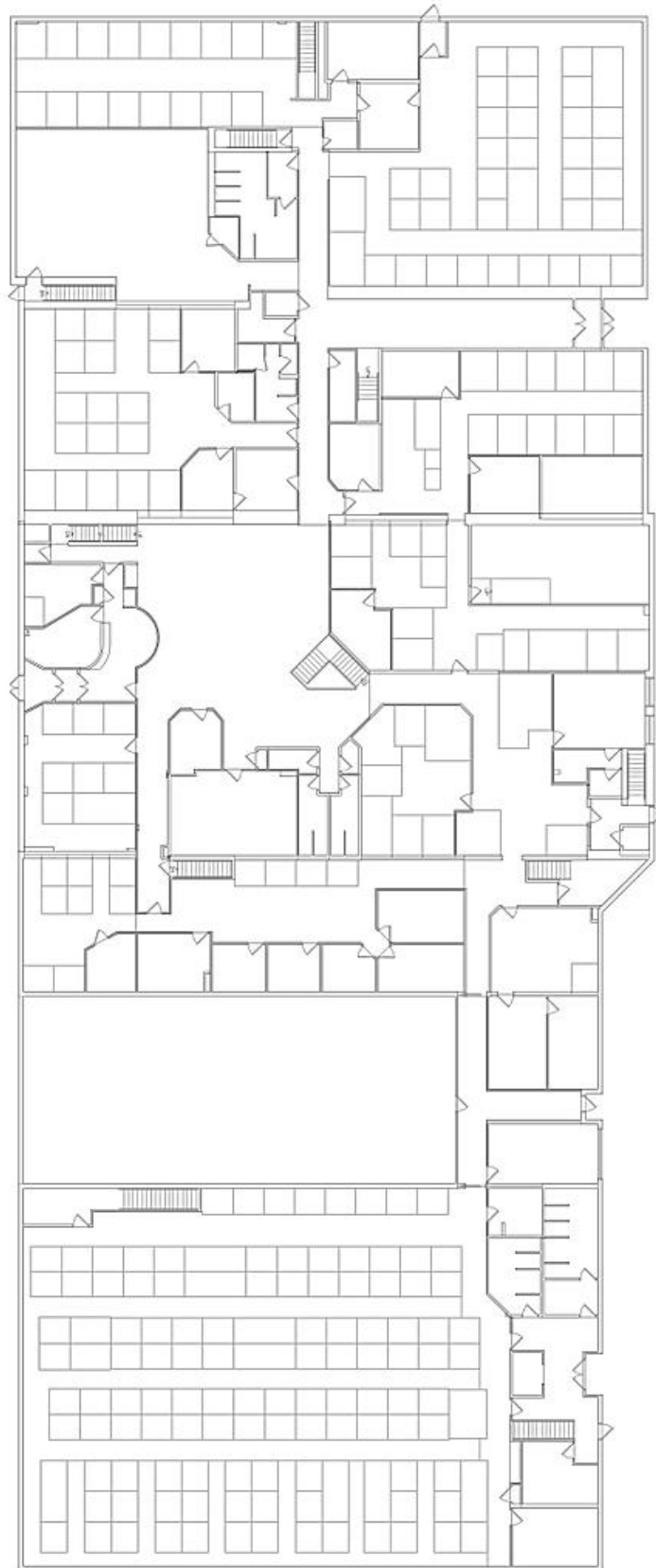
PROPERTY FEATURES

Property Type:	Office
Building Class:	C
Year Built:	1970
Building SF:	52,508 SF
Floors:	2
Parking:	40 Surface Parking Spaces

FLOORPLANS

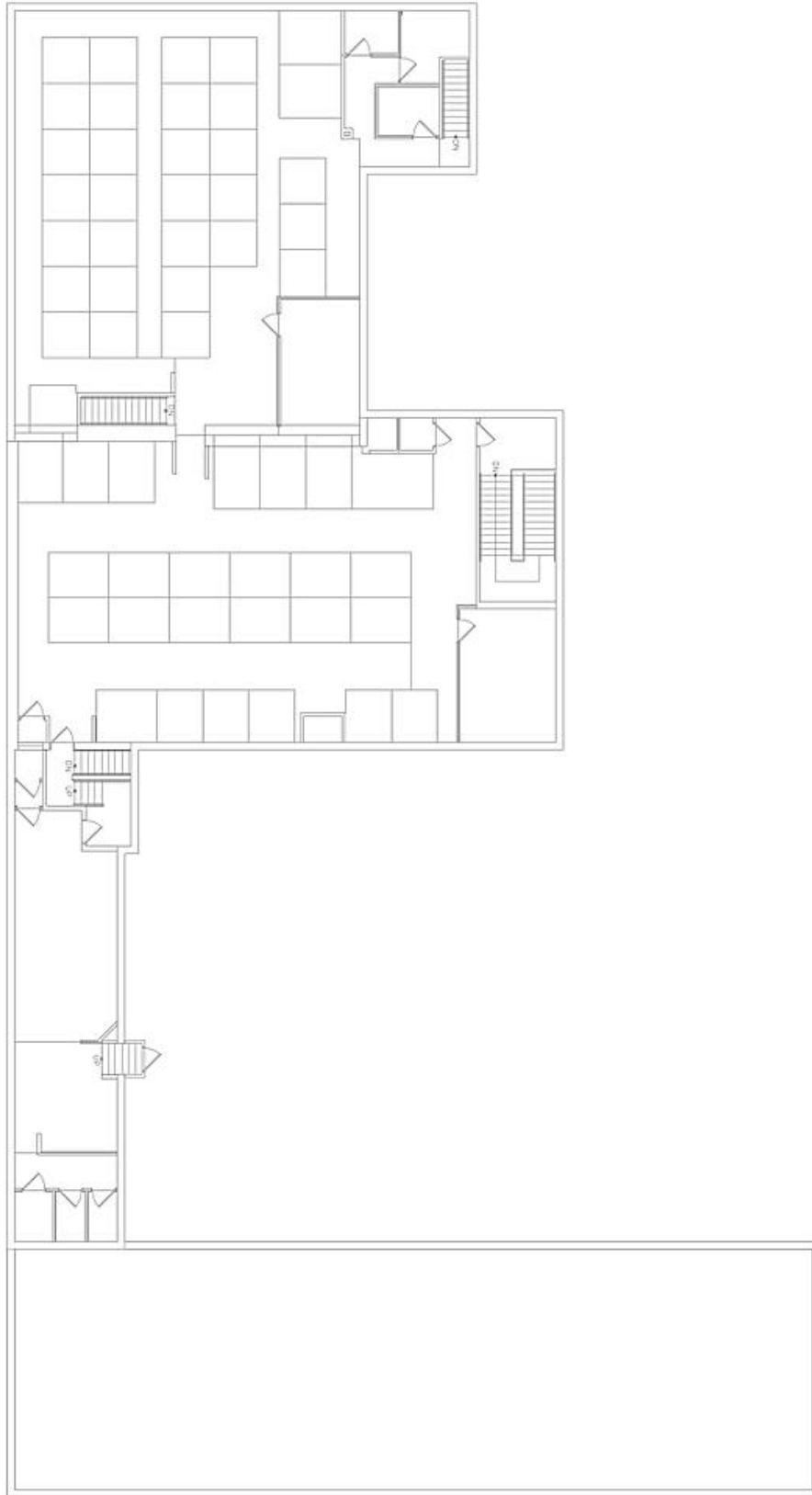
2425 James Street Main Lower Level





FLOORPLANS

2425 James Street 2nd Floor





**2401-2425 James Street,
Syracuse, NY 13206**

BELLCORNERSTONE

Commercial Real Estate

FOR MORE INFORMATION:

Mark Bethmann

BellCornerstone

315.427.7676

mbethmann@bellcornerstone.com

Dan Lynch

BellCornerstone

315.498.1600

dlynch@bellcornerstone.com

DISCLAIMER: The information contained in this flyer has been prepared to provide summary information and to establish a preliminary level of interest in the subject property. The information contained herein is for informational purposes only and does not constitute an offer to sell, lease, or sublease, nor is it a solicitation for same.