



Seating the Way You Want It

<b>PATTERNS</b>	<b>GRADE</b>
Archetype	2
Blueprint	3
Boothby	2
Connelly	2
Open House	2
Reframe	3
Rise	3

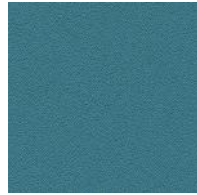
**OPEN HOUSE** | 100% RECYCLED | GRADE 2



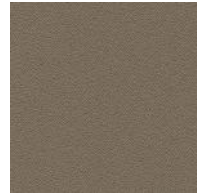
BLACK



NAVY



WATERFALL



GOOSE



SHADOW



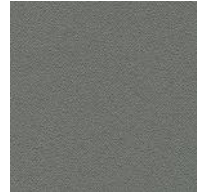
QUARRY BLUE



GRAPHITE



COBALT



ASTEROID



WINE

**ARCHETYPE** | i-CLEAN | GRADE 2



SMOKE



CAFÉ



ADMIRAL



HERBAL



SILT

**CONNELLY** | i-CLEAN | GRADE 2



DOVE



CROW



OWL



BLUE JAY



WREN

**BOOTHBY** | GRADE 2



GLACIER



BLAZER



MARBLE

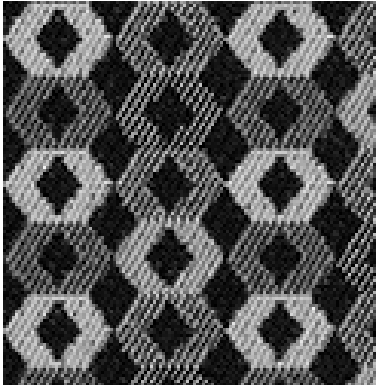


CASTLEROCK



BISBEE

**RISE | CLEAN IMPACT | 100% RECYCLED BIODEGRADABLE | GRADE 3**



ECHO



NIGHT SKY



SHADOW



RAIN SONG



FROST



FOG

**BLUEPRINT | GRADE 3**



JET



DENIM



SANDY



FOG

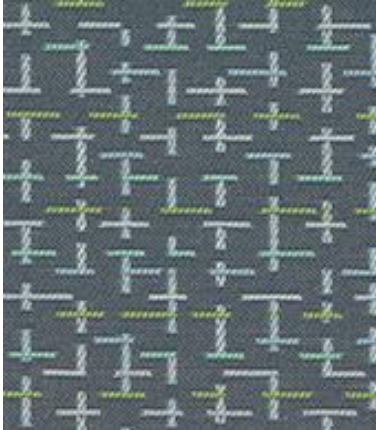


FLAME



BASIL

**REFRAME | CLEAN IMPACT | 100% RECYCLED BIODEGRADABLE | GRADE 3**



SERENE



BLUEBERRY



VAPOR



BLACK SESAME



NEBBIOLO

# Technical Information

Pattern	Fiber Content & Backing	Finish	Approx. Repeats	Abrasion (D.R.)	Lightfastness	Flammability*	Cleaning Code
ARCHETYPE	79% Polyester, 21% Rayon 100% Polyester Non-Woven Scrim Backing	i-clean™	(none)	75,000	40 Hrs. Grade 4	CAL TB 117-2013 NFPA 260 Class I UFAC Class I	WS
BLUEPRINT	57% Recycled Polyester, 43% Polyester 100% Acrylic Backing	PFAS-Free Stain Resistant	5" V, 4.875" H	62,000	40 Hrs. Grade 5	CAL TB 117-2013 NFPA 260 Class I UFAC Class I	WS
BOOTHBY	100% Polyester	(none)	6" V, 4.75" H	100,000	40 Hrs. Grade 4	CAL TB 117-2013 NFPA 260 Class I UFAC Class I	W
CONNELLY	100% Polyester Synthetic Latex Blend Backing	i-clean™	(none)	95,000	40 Hrs. Grade 4	CAL TB 117-2013 NFPA 260 Class I UFAC Class I	WS
OPEN HOUSE	35% Post-Consumer Recycled Polyester, 65% Pre-Consumer Recycled Polyester	(none)	(none)	250,000	40 Hrs. Grade 4	CAL TB 117-2013 NFPA 260 Class I	WS
REFRAME	100% Post-Consumer Recycled Biodegradable Polyester**	CO Stain & Water Repellent	5.88" V, 7.38" H	75,000	40 Hrs. Grade 4	CAL TB 117-2013 NFPA 260 Class I	WS, BC
RISE	100% Post-Consumer Recycled Biodegradable Polyester**	CO Stain & Water Repellent	1.63" V, 2.35" H	75,000	40 Hrs. Grade 4.5	CAL TB 117-2013 NFPA 260 Class I	WS, BC

\* This term and any corresponding data refer to typical performance in the tests indicated and should not be construed to imply the behavior of this or any other material under actual fire conditions.

\*\* Rate and extent of biodegradation into elements found in nature is 91% after 1,278 days under ASTM D5511 (Anaerobic Biodegradation of Plastic Materials Under High Solids Anaerobic Digestion Conditions). The test was done with the same component (PET) polyester and biocatalyst additive. No evidence of further degradation.

## Cleaning Code Definitions

- W: Water-based cleaning agents or foam may be used.
- WS: Clean with water-based cleaning agents, foam or pure, water-free solvents. So not saturate with liquid. Vacuuming or light brushing is recommended to prevent dust and soil build up.
- BC: Bleach Cleanable. Clean with a 10% bleach-to-water solution. Rinse well after cleaning.



For more information on these patterns regarding cleaning, compliances, and more - visit our Upholstery Library at [Lesro.com](http://Lesro.com)



Seating the Way You Want It



Express Selections™



American Built™



Pain-Free Pledge™