

**COMPANY  
PROFILE**

Individual commitment to a group effort - that is what  
makes a team work, a company work,  
a society work, a civilization work.

—

***Vince Lombardi***



# CONTENTS

---

- 04 About The Company
- 05 Introduction Our Company
- 06 Our Vision Mision
- 07 Our Factory
- 08 CEO Statement
- 09 Our Division
- 10 Why Choose Our Product
- 11 Technical Advice And  
Planning
- 12 Sandei Blinds
- 13 Sandei Partition
- 15 Gallery
- 20 Blinds Project
- 25 Partition Project
- 30 Our Client

# ABOUT THE COMPANY

---

Since its establishment more than 30 years ago, PT Sandimas Intimitra has grown into leading local manufacturer of window coverings and operable partitions. Sandimas technical background is our company's core value, means we always strive for customer satisfaction through our expertise in technical solutions and innovative designs.

Sandimas focused on two main products : Sandei partitions, which could be divided into operable glass and operable walls, and Sandei blinds, which provide extensive type of window coverings,

*Sejak didirikan lebih dari 30 tahun yang lalu, PT Sandimas Intimitra telah berkembang menjadi perusahaan terdepan di bidang operable partitions dan window coverings. Dengan latar belakang teknis sebagai value inti perusahaan, mendorong kami mengedepankan kepuasan pelanggan melalui keunggulan solusi teknis dan desain yang inovatif.*

*Sandimas fokus kepada dua produk inti : Sandei Partitions, yang terdiri dari operable walls dan operable glass, serta Sandei blinds, yang menyediakan berbagai macam pilihan window coverings yang lengkap.*





# INTRODUCTION OUR COMPANY

---

Founded in 1985 by Brunoto Suwandrei Arifin, PT Sandimas Intimitra started as a home business that manufactured garage doors.

The founder, who had a background as an architect, saw movable partitions as a breakthrough solutions to a growing need for flexibility of space. During its early development, Sandimas also included window coverings in the product line. Over time, the company grew steadily and branched out to wide variety of products, yet eventually found its focus on operable partition and window coverings under Sandei as company's brand.

*PT. Sandimas Intimitra adalah perusahaan swasta Indonesia yang didirikan pada tahun 1985 oleh Brunoto Arifin.*

*Dengan latar belakang sebagai arsitek, beliau melihat movable partitions sebagai solusi terbaik untuk kebutuhan fleksibilitas ruang yang terus meluas. Sandimas kemudian menambahkan penutup jendela dalam lini produknya. Seiring berjalannya waktu, perusahaan melebarkan sayapnya ke berbagai macam produk, dan pada akhirnya, fokus kepada window coverings dan operable partitions.*

# OUR VISION MISSION

---

Our foundation is about people growth and development, solution is our strength, and function is our identity, and also we appreciate relationship with suppliers, client and our people.

## VISION

A company that keeps growing on a foundation of suppliers and client trust, and also our people self development.

*Sebuah perusahaan yang terus bertumbuh diatas pondasi kepercayaan supplier dan klien kami, dan juga diatas perkembangan pribadi setiap individu diperusahaan kami.*

*Landasan kami adalah tentang pertumbuhan dan perkembangan manusia, solusi adalah identitas kami, dan juga kami menghargai hubungan dengan suppliers, klien dan orang-orang kami.*

## MISSION

Put solution and care at the middle of everything we do.

*Meletakkan solusi dan peduli ditengah-tengah segala sesuatu yang kami lakukan.*

## Value

Function - Solution - Humanity

*Fungsi - Solusi - Kemanusiaan*



# OUR FACTORY

**Sandimas Intimitra factory** was established with an area of 6000 m<sup>2</sup>, which is located at Jl Raya Narogong km 15, Bekasi. We produce kinds of products with high-quality local materials and components imports from Europe, and equipped with modern production equipment from Germany, Italy, Japan and Taiwan with the best maintenance.

The method used for the production of Sandimas Intimitra using a modern machine, also use traditional methods so the quality of our products is maintained and high quality. In our production process, product was made by measure from customers, and produce based on customer's desires with the best quality.

In addition, we maintain a good environment (K3) so the products are neat, clean and in appropriate with the customer's desires.

Because customer's satisfaction is our priority.

**Pabrik Sandimas Intimitra** didirikan dengan luas 6.000 m<sup>2</sup>, yang berkedudukan tepatnya di Jl. Raya Narogong km. 15, Bekasi. Kami memproduksi jenis produk dengan material dan komponen lokal dan impor dari Eropa yang berkualitas tinggi, serta di lengkapi dengan peralatan produksi modern dari Jerman, Italy, Jepang dan Taiwan dengan perawatan terbaik.

Metode yang digunakan untuk proses produksi Sandimas Intimitra menggunakan mesin modern, juga menggunakan metode tradisional sehingga kualitas produk kami tetap terjaga dan bermutu tinggi.

Dalam Proses produksi kami, produk dibuat berdasarkan ukuran kebutuhan sehingga kami dapat memproduksi sesuai keinginan pelanggan dengan kualitas yang terbaik. Selain itu, Kami menjaga lingkungan (K3) yang baik sehingga produk yang dihasilkan rapi, bersih dan sesuai dengan keinginan pelanggan kami.

Karena kepuasan pelanggan sangat kami utamakan.





“

“ For our clients, we are committed to provide integrated solutions in the provision of space stability and natural light settings so as to add functional and aesthetic value.”

“Untuk para pelanggan kami berkomitmen pada penyediaan solusi terintegrasi dalam penyediaan stabilitas ruang dan pengaturan cahaya alam sehingga menambah nilai fungsional dan estetika.”

---

Jenfilia S. Arifin, S.T, M. Arch

“

“We are moving forward with the vision of being a trusted Partitions and Blinds company in Southeast Asia”

“Kami melangkah terus kedepan dengan visi menjadi perusahaan Operable Partisi dan Blinds terpercaya di Asia Tenggara”

---

Ir. Brunoto S. Arifin





# OUR DIVISION

---

Our high-quality products and services are possible with our divisions experienced in their fields, that could be divided into 6 divisions: Marketing, Sales, R&D, Production, Project Management, and supply chain.



## MARKETING

Developing design strategy for brand quality improvement and market research to optimize the solution between our products and client's need.

*Merancang strategi dalam meningkatkan brand produk dan brand image untuk mengoptimalkan solusi sesuai dengan kebutuhan klien.*



## SALES

To assist clients in finding suitable products for their inquiry through complete services.

*Membantu klien dalam memilih produk yang tepat sesuai dengan kebutuhan, dan memberikan pelayanan secara menyeluruh*



## RESEARCH AND DEVELOPMENT

Conducting research activities, products development, and improving the quality of existing products.

*Mengelola aktivitas riset, pengembangan produk, dan meningkatkan kualitas produk yang sudah ada.*



## PRODUCTION

Responsible for the manufacturing process to ensure the end results meet the highest quality.

*Bertanggung jawab dalam proses manufaktur sehingga dapat menghasilkan produk akhir dengan kualitas tertinggi*



## PROJECT MANAGEMENT

To ensure process of production and product consistency, as well as product installation to be on schedule.

*Memastikan kelancaran proses produksi dan kualitas produksi, serta pemasangan agar berjalan sesuai dengan jadwal.*



## SUPPLY CHAIN

Finding the right sources with the best quality and stable supply continuity

*Mendapatkan sumber tepat yang memiliki kualitas produk terbaik dan kestabilan supply*



# WHY CHOOSE OUR PRODUCT

---

## **30 Years of Experience**

*Making us an expert in the field of operable partitions and blinds*

## **Advanced Integrated Solutions**

*To create products that are suitable for any design needs*

## **Complete and Excellent Services**

*To satisfy our clients*

## **Extensive Portfolio Locally and Internationally**

*Making us become the most trusted partner*

## **Pengalaman lebih dari 30 tahun**

*Menjadikan kami ahli dibidang operable partitions dan blinds*

## **Solusi yang terintegrasi**

*Untuk menghasilkan produk yang sesuai dengan segala kebutuhan desain.*

## **Service terbaik dan menyeluruh**

*Untuk mencapai kepuasan pelanggan.*

## **Portofolio yang luas baik lokal maupun internasional**

*Sehingga kami menjadi partner yang terpercaya.*



# TECHNICAL ADVICE AND PLANNING

---

Our services cover every step of the process :

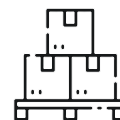
Layanan perusahaan kami mencakup semua aspek :



PLANNING  
PERANCANGAN



COST CALCULATION  
PERHITUNGAN BIAYA



ORDERING  
PEMESANAN



MEASURING  
PENGUKURAN



DELIVERIES  
PENGIRIMAN

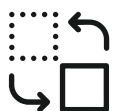


INSTALATIONS  
INSTALASI

---

After Sales Service :

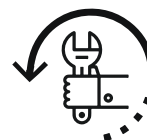
After Sales :



ALTERATIONS  
PERUBAHAN



MODIFICATIONS  
MODIFIKASI



RE-INSTALLATIONS  
PEMASANGAN  
ULANG



# OUR PRODUCT LINE

Gunung Geulis, Bogor

## sandeiblinds

With more than 20 years of experience, Sandei Blinds has become one of the leading window covering products in Indonesia. Sandei Blinds is an innovative and flexible blinds product that can accommodate design for every spaces. Our technical blinds product supported by a reliable technical team. A wide selection of excellent product for exterior and interior needs are available, including Roller Blinds, Roman Blinds, Shanseer blinds, Venetian Blinds, Skylight Blinds, and Awnings. Our products use components and fabrics from the best sources around the world.

*Dengan pengalaman lebih dari 20 tahun, Sandei Blinds telah menjadi salah satu produk window coverings terdepan di Indonesia. Sandei Blinds merupakan produk blinds yang inovatif dan flexible yang dapat mengakomodasi setiap design bukaan ruang. Sandei memiliki keunggulan sebagai produk blinds teknikal yang didukung oleh tim teknis yang handal. Berbagai macam pilihan produk unggulan untuk kebutuhan exterior dan interior tersedia, antara lain Roller blinds, Roman blinds, Shanseer blinds, Venetian blinds, Vertical blinds, Skylight blinds dan Awning. Produk - produk kami menggunakan komponen dan kain dari sumber terbaik di seluruh dunia.*

### **INTERIOR BLINDS**

Supported by high quality components and extensive selection of fabrics from worldwide sources, Sandei Interior Blinds ensure comfort and flexibility in any space. Thanks to our tehcnical expertise. We offer custom on demand product that is able to covers wide span and height. Our control system, comes in manual and motorized, is easy to control and versatile, ensuring every client's need for window covering solutions

*Didukung oleh komponen berkualitas tinggi dan material yang berkualitas dari seluruh dunia, Interior Blinds Sandei berkomitmen untuk menjamin kenyamanan tinggi bagi pelanggan. Berkat keahlian teknis kami, kami dapat menghasilkan produk yang cocok dengan permintaan, dengan desain pilihan yang lebar dan tingginya bisa disesuaikan. Sitem pengontrol kami hadir dalam bentuk manual dan motorized yang membuatnya mudah untuk dikendalikan, memastikan setiap kebutuhan pelanggan untuk window fashion terpenuhi.*

### **EXTERIOR BLINDS**

Explore our exterior collections to maximize comfort in your outdoor space. It is specifically design to endure strong wind and heavy rain, while controlling natural light without obstructing the view from your outdoor space. Sandei exterior fabric blinds provides one stop solution to your exterior need.

*Jelajahi koleksi eksterior kami untuk memaksimalkan kenyamanan di ruang terbuka Anda, terutama desain untuk menahan angin kencang dan hujan deras. Tanpa benar-benar menghalangi cahaya alami atau pandangan, kain eksterior Sandei menyediakan one stop solution untuk kebutuhan eksterior Anda.*



## sandeilpartitions

**Sandeil Partitions** is the first PT. Sandimas Intimitra subsidiary company. By offering experience more than 30 years, Sandeil Partitions consist of two main products : Operable Walls and Operable Glass which has been continuously developed with a variety of new features and technologies.

**Sandeil Partitions** merupakan salah satu anak perusahaan pertama yang dimiliki PT. Sandimas Intimitra. Berbekal pengalaman lebih dari 30 tahun, Sandeil Partitions menghasilkan dua produk utamanya yaitu Operable Walls dan Operable Glass yang selama ini terus dikembangkan dengan beragam fitur dan teknologi baru.



# OPERABLE GLASS

---

The Edge Bali

**Sandei Operable Glass** is specially designed to cover large openings and minimize boundaries between indoor and outdoor spaces. Sliding glass maximize natural air circulation, natural light and unobstructed outside view.

**Sandei Operable Glass** dirancang khusus untuk menjadikan ruang yang luas, yang memaksimalkan integrasi antara ruang dalam dan luar ruangan. Produk ini memungkinkan sinar matahari dan pemandangan luar ruangan yang memadai, serta menciptakan fleksibilitas ruangan.



# OPERABLE WALL

---

Hotel Paragon, Semarang

**Sandei operable wall** can give ideal concept and creativity to barrier interior solution. Space utilization can be maximized by modifying volume capacity.

**Sandei Operable Wall** memberikan konsep ideal dan kreatif untuk solusi pembelahan interior. Pemanfaatan ruangan dapat dimaksimalkan dengan memodifikasi volume kapasitas.

# GALLERY



Roller Blinds Heavy Duty at Residence



Wall Partition at Tempo, Jakarta

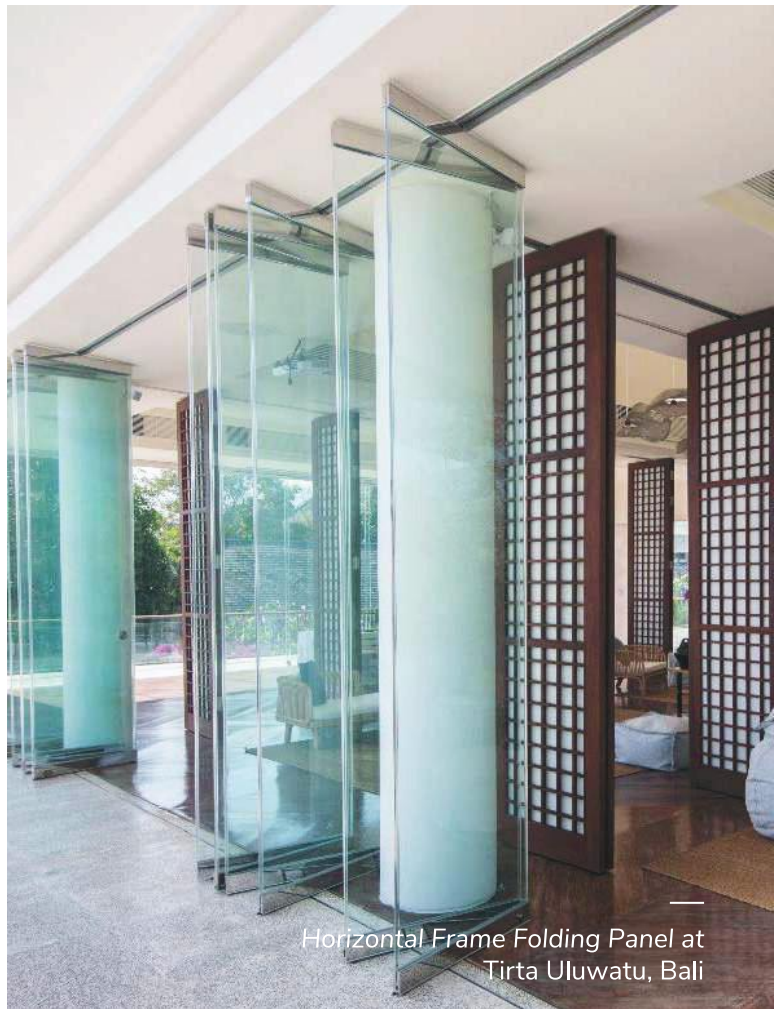




Skylight Lensron Flat at  
Merah Putih Resto, Bali



Horizontal Frame Panel at  
Puri Temple Hill Wedding Chapel Jimbaran, Bali



Horizontal Frame Folding Panel at  
Tirta Uluwatu, Bali



—  
Gudang Garam at  
Jakarta

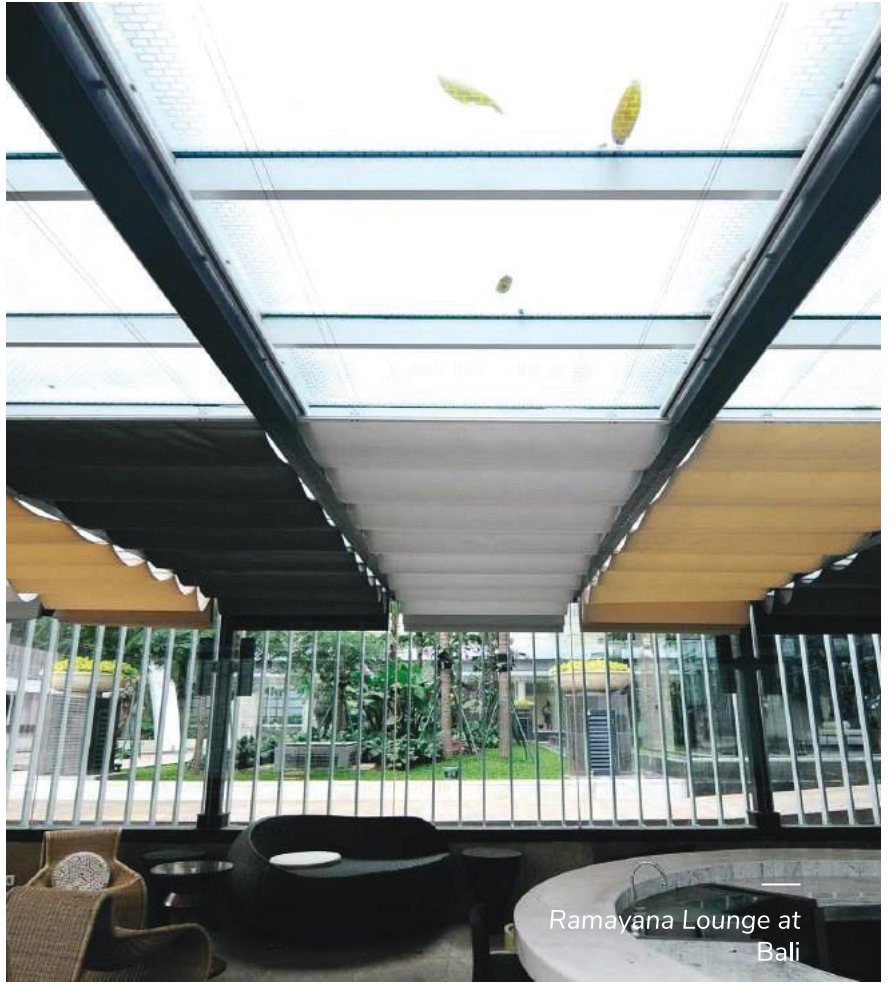


—  
Wisma at  
Bali





Villa Mizu at  
Bali



Ramayana Lounge at  
Bali



Tirtha Uluwatu at  
Bali



Spring Hill at  
Bali

# BLINDS PROJECTS

## HOTEL

PROJECT NAME	LOCATION	AREAS	CLIENT	DATE
Conrad Bali	Bali		PT. Gema Graha Sarana	2014
Hotel Double Tree	Jakarta	Lt. GF (Ballroom & Fitness)	PT. Nurtirta Nusa Lestari	2014
Hotel Mercure Sabang	Jakarta	Area Restaurants	PT. Jakarta Regency Hotel	2014
Padma Hotel	Bandung		PT. Trigana Putra Mandiri	2014
Hotel Mercure Ancol	Jakarta		PT. Jatisungkai Estetika	2014
Ritz Carlton	Bali	1000,587 m2	Amardeep	2014
Four Seasons	Bali		Amardeep	2014
Hotel Raffles	Jakarta		Amardeep	2014
Grand Mercure	Jakarta		Romantik Interior	2015
Hotel Indonesia Kempinski	Jakarta	Room 736 & 1512	Hotel Indonesia Kempinski	2015
Hotel Borobudur	Jakarta		Hotel Borobudur	2015
Hotel Mercure Alam Sutera	Tangerang		Hotel Mercure	2015
Hotel Four Point	Jakarta		PT. Danarmas	2015
Hotel & Resort Gunung Geulis	Bogor		PT. Mulia Colliman	2016
Hotel Swissbell Jogjakarta	Yogyakarta		PT. Matratama Graha Mulia	2016
Hotel Darmawangsa	Jakarta	Lt. 1	PT. Cakrawala Talenta Perdana	2016
Four Point Bandung	Bandung		PT. Danarmas	2016

PROJECT NAME	LOCATION	AREAS	CLIENT	DATE
Four Point Manado	Sulawesi		Mui Id Office	2017
Hotel Santika Premiere	Jakarta		PT. Kitangtaran	2017
Harris Hotel	Jakarta		PT. Unimitra Pasific Kharisma	2017
Hotel Courtyard	Bandung		Indra Interior - Bandung	2018
Renaissande Hotel	Bali		Serba Antik	2018
Hotel Ayana Komodo, Labuan Bajo	NTT		Mid Plaza	2018

## OFFICE

Plaza Mandiri	Jakarta	Lt. 3	GBE	2014
Trakindo BSD Serpong	Jakarta		Trakindo	2014
Esa Sampoerna Surabaya	Surabaya		Esa Sampoerna Surabaya	2014
Air Asia	Jakarta	Lt. 2-5	Pedima	2014
XL Menara Prima 2	Jakarta		PT XL Axiata	2014
Fedex	Jakarta		PT Sentra Bhanuadi	2014
Pertamina	Jakarta	PHE Lt. 25	PT Gema Graha Sarana	2014
Ciputra	Jakarta	Lt. 39 & 40	PT Ciputra Development	2014
Gudang Garam	Jakarta	Lt.23 (R. Linen) & 23	PT Gudang Garam	2014
SCTV Tower, Senayan City	Jakarta	Lt. 18	PT SCTV	2014
Commonwealth Bank	Bandung		PT. Karutama Selaras	2014
Sampoerna Strategic Square	Jakarta		Arcata Design	2014

PROJECT NAME	LOCATION	AREAS	CLIENT	DATE
Sentul Highland Golf Club	Bogor	Lt. 4	PT. Algyp Sarana Graha	2014
Pama Persada	Jakarta		PT. Kitangtaran	2014
Pelindo II	Jakarta	Lt. 8	PT. Sarijati Adhitama	2014
Kantor Summarecon Bekasi	Bekasi		PT. Summarecon Agung Tbk	2014
Pertamina PGE	Jakarta		PT. Algyp Sarana Graha	2014
Indosat	Jakarta		PT. Gema Graha Sarana	2014
Loreal	Jakarta	Lt. 29	Loreal	2015
PT Holcim	Bogor	Lt. 15	PT. Vetira	2015
PT. Kawan Lama	Jakarta	Lt. 10	PT. Kawan Lama	2015
PT. MAP	Jakarta	Lt. 25-29	PT. MAP	2015
MNC TV	Jakarta		MNC TV	2015
RCTI	Jakarta		RCTI	2015
Midplaza 2	Jakarta	Lt. 25	Mid Plaza	2015
Danamon Head Office	Jakarta		Menara Bank Danamon	2016
Indosat Semarang	Semarang		PT. Prasetya Mulya Abdi	2017
Bank Indonesia	NTT		PT. Sari Jati	2017
Bank Indonesia	Banten		PT. Wijaya Karya	2017
Kedutaan Portugal	Jakarta		Embassy of Portugal	2017
Citibank SCBD	Jakarta		Pedima	2017
Kementrian BUMN	Jakarta		PT. Unitekniindo	2017

PROJECT NAME	LOCATION	AREAS	CLIENT	DATE
Sahid Sudirman	Jakarta		Nelson Liaw	2017
PT Perusahaan Gas Negara	Jakarta		PT. PGN	2017
Frank & Co	Jakarta		Frank & Co	2018
HSBC	Jakarta		Pedima	2018
PT. Duta Printing Indonesia	Jakarta		PT. Duta Printing Indonesia	2018
Ciputra World 1	Jakarta		PT. Asuransi Ciputra World	2018
Kemensos RI	Jakarta		PT US&P Architects	2018
PT. Rolex Service Center	Jakarta		Beatrice Lai	2018
Bank Indonesia	Jakarta		CV Serena Jaya	2018

## RESIDENCE

The Dharmawangsa	Jakarta	Area A, B, C, D	PT Puri Dharmawangsa	2014
The Capital Residence Sudirman	Jakarta		Myris Living	2016
Dharmawangsa Residence	Jakarta		Demmitasse Living	2018
Apartment The Peak	Jakarta		Artamatic	2018
Senopati Suites	Jakarta		Demmitasse Living	2018



# PARTITION PROJECTS

## HOTEL

PROJECT NAME	LOCATION	AREAS	CLIENT	DATE
Crown Plaza	Jakarta	L. 47.25 m x T. 7.4 m		2009
Hotel Royal Safari, Bogor	Bogor	L. 17.2 m x T. 4.0 m		2010
Hotel Aston, Palembang	Palembang	L. 22.05 m x T. 5.25 m		2011
Hotel Santika Premiere, Medan	Medan	L. 37.525 m x T. 6.3 m		2011
Hotel Pullman Central Park, Jakarta	Jakarta	L. 12.86 m x T. 3.8 m		2011
Hotel Grand Royal, Surabaya	Surabaya	L. 23.5 m x T. 10.5 m		2011
Hotel Luwansa, Jakarta	Jakarta	L. 22.765 m x T. 5.8 m		2012
Hotel Pullman Jakarta	Jakarta	L. 17.68 m x T. 4.2 m		2013
Hotel Mercure Alam Sutera	Jakarta	L. 24.23 m x T. 6.0 m		2013
Bali Nusa Dua Convention Center	Bali	L. 45 m x T. 8.0 m		2013
Upper Hills Tanjung Bunga, Makasar	Makasar	L. 55.0 m x T. 8.15 m		2014
Hotel Santika Hayam Wuruk	Jakarta	L. 15.53 m x T.7.0 m		2014
Hotel Harris Summarecon	Bekasi	L. 23.28 m x T. 7.0 m		2014
Hotel Grand Zuri Yogyakarta	Yogyakarta	L. 30.0 m x T. 9.0 m	PT. Hotel Istana Jaya Raya	2014
Hotel Darmawangsa	Jakarta		PT. Surya Gemilang Perkasa	2014
Hotel Summarecon	Bekasi		PT. Summarecon Hotelindo	2014
Hotel Mercure	Jakarta		PT. Jakarta Regency Hotel	2014

PROJECT NAME	LOCATION	AREAS	CLIENT	DATE
Hotel Ciputra, Semarang	Semarang		PT. Deka Sari Perkasa	2014
Private Lounge Hotel Gran Melia	Jakarta		PT. Pandegacipta (Moduler)	2014
Grand INNAYA PUTRI Nusa Dua Bali	Bali		PT. CARBEK NUSANTARA	2015
Hotel Sahid	Yogyakarta		PT. Koba Pangestu/ PT. Sahid Inti Dinamika	2015
Four Points Hotel	Surabaya		Pakuwon Group	2015
Hotel Golden Tulip di Lombok	NTB		PT. Duta Graha Miller	2015
Hotel La Prima	NTT		PT. Aneka Sinar Mutiara	2015
Hotel Crown Plaza, Bandung	Bandung	L. 13 m x T. 3.95 m		2015
Hotel Grandia, Bandung	Bandung	L. 17.94 m x T. 7.0 m		2015
Hotel Sahid Yogyakarta	Yogyakarta	L. 30.0 m x T. 9.0 m		2015
Hotel Annvaya Bali	Bali	L. 25.0 m x T. 8.0 m		2015
Four Points Hotel	Surabaya		PT. Artisan Wahyu (Pakuwon Group)	2016
Hotel Ciputra	Jakarta		Purchasing Hotel Ciputra	2017
Hotel Borobudur (Flores Ballroom)	Jakarta		Hotel Borobudur	2017
Meeting Room Hotel Santika	Bangka Belitung		PT. Talu Belitung Resort	2017
Hotel Santika Premiere	Palembang		PT. Mutiara Endikat	2017
Hotel Aryaduta	Jakarta		PT. Global Furnika Mandiri	2017
Jasmine Room Hotel Ayana	Jakarta	L. 37.925 m x T. 7.5 m	PT. Mid Plaza	2018
Palm Park Hotel	Surabaya	L. 40 m x T. 9.0 m	PT. Kemala Cipta Selaras	2018
Hotel Soll Marina	Bangka Belitung	L. 9.8 m x T. 9.0 m	PT. Soll Marina	2018

## OFFICE

PROJECT NAME	LOCATION	AREAS	CLIENT	DATE
Plaza Mandiri	Jakarta		PT. Gedung Bank Exim	2014
Telkomsel, Gedung Wisma Mulia	Jakarta		PT. Tri Asri Desindotama	2014
Swarovski Plaza Indonesia, Jakarta	Jakarta		PT. M A P	2014
XL Menara Prima	Jakarta		PT. Caturgriya Naradipa	2014
Menara Allianz Lt.7	Jakarta		PT. Gema Graha Sarana	2014
Ged. BNI Kantor Pusat Lt. 3	Jakarta		PT. Trimuda Tunggal Sejahtera	2014
Deloitte Plaza Office Tower, Jakarta	Jakarta		PT. B M K K	2014
United Tractor Lt. 4	Jakarta		PT. B M K K	2014
Astra Honda Motor	Jakarta		PT. Trisindo	2014
Otoritas Jasa Keuangan Lt. 27, Jakarta	Jakarta		PT. Sari Jati Adhitama	2014
Adidas, Gedung Artha Graha	Jakarta		PT. GGS	2014
Toyota Plant	Karawang		PT. Algyp Sarana Graha	2014
Gedung Sarana Steel	Jakarta		PT. Loko Nusa	2015
GSK Standard Chartered	Jakarta		PT. Ranggada	2015
Pertamina	Jakarta		PT. KMS	2015
Prudential di Gedung H. Tower Lt. 20	Jakarta		PT. Surya Kejora Gemilang	2015
AIA Central Tower	Jakarta		PT. Citra Sembilan Satu	2015
Plaza Mandiri Lt. 9	Jakarta		PT. Bumi Daya Plaza	2015
Bank Mandiri Prioritas	Cirebon		PT. Pendopo Makmur	2015
Kantor H&M	Jakarta		PT. Ardeco Karya Global	2015

PROJECT NAME	LOCATION	AREAS	CLIENT	DATE
Kantor Angkasa Pura	Medan		PT. ALGYP	2015
Gedung Wika Tower	Jakarta		PT. Wijaya Karya	2015
Menara Danamon	Jakarta	Lt.5,6,10,11,16, 17 & 19	PT.Pedima	2015
Adidas	Jakarta	Lt. 5	PT. Ranggada	2016
Exxon Mobil	Jakarta		PT. Omovers	2016
Kantor Lawang Sewu Lestari	Jakarta		PT. Lawang Sewu Lestari	2016
Head Office Sriwijaya Air	Tangerang	Lt. 3	PT. Pedima	2016
MNC Tower	Jakarta	Lt. 12A		2016
Antam di Jakarta	Jakarta		PT. Angsana Cipta Pratama	2016
Telkomsel - Regional Renon	Bali	L. 30.0 m x T. 9.0 m	PT. Tetra Konstruksindo	2017
Bank Mandiri	Surabaya	Lt. 11 & Lt. 17	PT. Karutama Selaras	2017
Bank Indonesia Tower C	Jakarta	Lt. 2	PT. Subi Perkasa	2017
Telkom Landmark Tower	Jakarta		PT. Tektonindo Henida Jaya	2017
Pertamina	Jakarta		PT. Avia Agung Perkasa	2017
PGN Ketapang	Jakarta		PT. Andromega Buana Abadi	2018
Semen Indonesia	Jakarta		PT. BMKK	2018
GS Battery	Karawang		CV. Dwita Karya	2018

## FOOD, BEVARAGES & RESIDENCE

PROJECT NAME	LOCATION	AREAS	CLIENT	DATE
TBS Apartement	Jakarta		PT. Constructa	2014
Restoran Queen Tandor	Jakarta		PT. Michaffur	2014
Restoran Bakmi Gang Kelinci	Jakarta		PT. KDL	2014
Es Teler 77	Jakarta		PT. Centra Marvel	2014
Chinesse Restaurant Resinda Hotel	Karawang		PT. Indomitra	2015
Setiabudi Sky Garden	Jakarta		PT. Active Decor	2015
Restoran Duck King	Batam		Bima Of B + Design	2015
Restoran Aoki	Jakarta		Hotel Mahakam	2015
VIP Restoran Bandara Soetta	Tangerang		PT. Intermulia	2016
Sanjung Restaurant	Cikarang		PT. BSA-B2IN	2016
Restaurant Putien	Jakarta		PT. Dwitama	2017
Anandamaya Residence	Jakarta		PT. Caturgriya	2017
The Abbey	Jakarta		PT. Alkagra	2017
Hyatt Regency Yogyakarta	Yogyakarta	L. 23.0 m x T. 5.0 m	PT. Tunas Jaya Sanur	2017
Maystar Restaurant	Tangerang		PT. Nivada	2018
Restaurant Sumibian	Jakarta		PT. Liquid	2018
Ishigamaya & Chavaty	Jakarta		PT. Liquid	2018
Club House Taman Anggrek Residence	Jakarta		PT. GrahaCitra	2018
Soho Residence	Jakarta		PT. GB Interior	2018
So Fashion Cafe	Jakarta		PT. Nivada	2018

# OUR CLIENTS

We have clients who already used our product like businesses, restaurant, house, to multipurpose room. Your satisfaction is our important point to grow the design and product quality to be better

Kami memiliki beberapa klien yang sudah menggunakan produk PT. Sandimas Intimitra (Sande Blinds maupun Partitions) seperti di perkantoran, restoran, rumah, hingga ruangan serbaguna. Kepuasan clients merupakan poin penting bagi kami untuk mengembangkan kembali desain dan kualitas produk agar lebih baik.



Bank Mandiri



Djarum



Summarecon



Novotel  
Hotel, Suites & Resorts



Indofood



Kompas Gramedia



Ayana  
Resort & Spa Bali



Toyota



PT HM Sampoerna Tbk.



Indosat Ooredoo



Commonwealth Bank



Media Nusantara Citra



Rcti

Success seems to be connected with action.  
Successful people keep moving. They make mistakes,  
but they don't quit

—

**Conrad Hilton**



Scan for Details