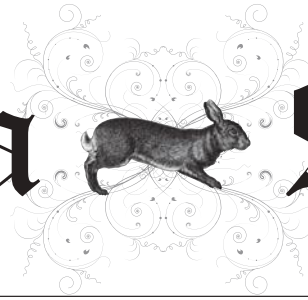


# Winchelsea Star

Price \$1



Your Weekly Community Newspaper

Since 1977

Vol 47 Ed 22

Tuesday 11 June 2024

[winchelseastar.org.au](http://winchelseastar.org.au)



## Winchelsea Primary School Netball Team advances to next round

On 31 May, Winchelsea Primary School sent teams to the local school sports carnival.

The highlight of the day was the Girls Netball taking out the title – beating a much larger school Mt Duneed Regional in the final

GET YOUR  
**FREE weekly digital subscription to the Star!**  
[winchelseastar.org.au](http://winchelseastar.org.au)

# Make the most of your food scraps.

When you separate your food scraps into your green bin along with garden clippings, they can be recycled into compost, instead of ending up in landfill.

The compost made from your food scraps and garden clippings can be used on farms and orchards to help grow food again.

Audits of kerbside bins last year revealed that food scraps accounted for 28% of the contents in our landfill bins.

Separating your food scraps into your FOGO bin means more high-quality compost for our farms and orchards.

**Find out more: [surfcoast.vic.gov.au/FOGO](https://surfcoast.vic.gov.au/FOGO)**

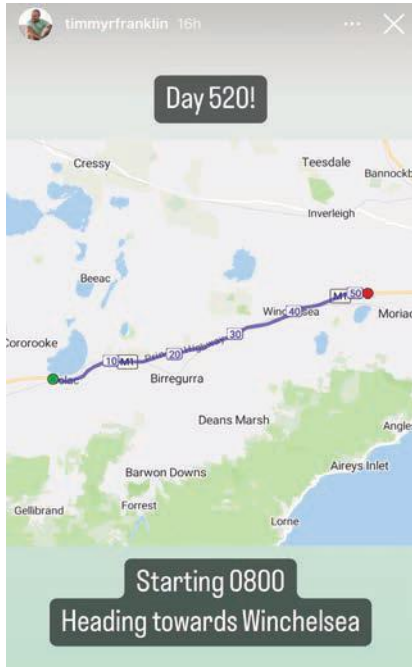




# Timmy runs the world ... through Winchelsea

Konrad Marshall

When Tim Franklin finally runs into Brisbane this month, he'll be the second fastest person ever to run all the way around the world - more than 26,000 kilometres - an odyssey that included a stop off in Winchelsea!



Franklin has been running for almost two years now, covering roughly 50 kms per day, and is set to become the second fastest person ever to circle the globe on foot. He's run through everything from snowy blizzards in South America, and, at the opposite end of the spectrum, through one day of scorching 66 degree temperatures in Bunbury, WA, although always with a trademark smile.

He ran through the western districts only recently, too, on Day 520

of his journey, departing Colac early on May 6 (with a nasty head cold), and reaching Moriac at dinnertime.

He needed some company though, so local resident David Loone gave Winchelsea home owner Konrad Marshall a ride out onto the highway to find Franklin, intercepting the bubbly runner near the turnoff to Birregurra.

Marshall, before offering him and his RV-driving support crew a place to stay on the Barwon for the night, where they rested.

The unstoppable Franklin was up and off again bright and early the next morning though, headed for Geelong, then Melbourne, followed by Sydney. His weary legs are now in the warmth up north, and almost home in Brissie. Well done Tim!

Learn more at [www.timrunstheworld.com](http://www.timrunstheworld.com)



L-R Konrad Marshall, Tim Franklin, David Loone

## Winchelsea Community Foodbank



Hesse Health

Last Friday, 7 June the Winchelsea Community Foodbank opened its doors for the first time.

The foodbank aims to provide local and accessible food relief to the Winchelsea Community. There are no eligibility requirements to accessing this service, anyone is welcome.

The Winchelsea Community Foodbank is open weekly, each Friday from 12-2pm and is located at 30-32 Hesse Street. It is out the front of the HMK Kinder.

The foodbank aims to provide a mix of fresh and shelf stable food and household items.

The Winchelsea Community Foodbank is reliant upon donations, if you wish to donate please contact Hannah on 0417 848 292.

The Winchelsea Community Foodbank is an initiative of the Healthy Communities Team at Hesse Rural Health and Winchelsea Community House. This program is supported by the Give Where You Live Foundation.

## Winchelsea Community Foodbank

**Fridays, 12 - 2PM**

**30-32 Hesse Street Winchelsea**



For more info, contact Hannah  
[healthpromotion@hesse.vic.gov.au](mailto:healthpromotion@hesse.vic.gov.au)  
 0417 848 292



**THURSDAY 4TH JULY**  
**WINCHELSEA**

**FREE FOOD HANDLERS CERTIFICATE**

Winchelsea Shire Hall  
 10am-2pm

Free for young people, aged 12-25

Please sign up via the link in our bio.  
 Contact [esweeney@surfcoast.vic.gov.au](mailto:esweeney@surfcoast.vic.gov.au) with any questions





## Grain Free Bread and Longevity Mayonnaise Workshop

Saturday 15 June

In the kitchen at the Shire Hall 8 Hesse St, Winchelsea

Ever wanted to be kinder to your gut but find staples like bread a barrier? Dim, from Longevity Oil and Patty-Georgia (aka 'the Baxter Quoll') will show you how to make delicious grain-free bread, teamed with nourishing, gut-healthy, non-inflammatory olive oil mayonnaise. After a lunch of sampling our goodies, you will take home a baked loaf plus prepped dough to bake at home, and a jar of mayo.

All ingredients provided.

Cost: \$100

Participants will need to bring:

1 loaf tin

1 tea towel

1 300ml jar

Contact Winchelsea Community House to enrol  
 e: [shirehall@winchhouse.org.au](mailto:shirehall@winchhouse.org.au) Ph 5267 2028

# GRANTS

**Quick Response Grants Now Open**

- Grants Up to \$3,000**  
 (Applications are assessed on a monthly basis until the allocated annual budget is exhausted)



Call grants team on **5261 0600** to discuss your idea and ask any questions.

Scan the QR code to find out more.

[surfcoast.vic.gov.au/Community/Grants/Quick-Response-Grants](http://surfcoast.vic.gov.au/Community/Grants/Quick-Response-Grants)




## Expression of Interest

Council invites Expressions of Interest from commercial suppliers to purchase excess mulch from Council's tree trimming program for a period of 12 months with the potential to extend.

To make a submission, please email [info@surfcoast.vic.gov.au](mailto:info@surfcoast.vic.gov.au) with a nominated purchase rate per m3.

For more information please call Ella Jackson, Coordinator Open Space Operations on **5261 0600**.

[surfcoast.vic.gov.au](http://surfcoast.vic.gov.au)



**Healthy spine, Healthier life**

**Dr Joel Grist**  
 B.App.Sci.(Clin.Sci), B.Chiro.Sci

**Ph (03) 5231 5594**

50 Murray St, Colac, 3250  
[www.colacchiro.com](http://www.colacchiro.com)





**TORQUAY MAINTENANCE**  
 Jared 0438804227  
 Landscape Construction  
 Renovations  
 Garden & mowing services  
 General Maintenance

[admin@torquaymaintenance.com.au](mailto:admin@torquaymaintenance.com.au) Instagram : @torquay\_maintenance



Commercial | Industrial | Domestic

# HAMILTONS

**Truck & Bobcat Hire**  
**Give Aaron a Call**  
**0438 438 623**





# Winchelsea tennis

## Midweek Section 2 Premiers

**Lesley Mathison**

Last Tuesday, the Section 2 Midweek Ladies team from Winchelsea won the Grand Final, defeating Point Lonsdale 5 sets 34 games to 1 set 19 games!

The ladies had a very strong season and finished on top of the ladder after the home and away games. In their first final against Pt. Lonsdale they won 4 sets to 2 and advanced to the Grand Final. It was a perfect day for tennis last week, with cool conditions and no wind, and the team played their best tennis to dominate in the final! Unfortunately, Allison Blake injured her calf two days prior to the final, so was unable to play, but fortunately, with 6 players, a 5 member squad was able to play!

Congratulations to the team and best of luck up in Section 1 next season!



Team members

L- R Lesley Mathison, Anna McGennisken, Sue Sutherland, Allison Blake, Tracey Langley and Andrea Spiller seated!



Lulu and Luca playing at Helen M. Kininmonth Kindergarten

## Apply now for three-year-old kinder in Winchelsea

### Surf Coast Shire

Local families looking to provide their children with two years of kindergarten can apply now for a spot at Helen M Kininmonth Kindergarten in Hesse St Winchelsea in 2025.

The Surf Coast Shire Council-run kindergarten has three-year-old and four-year-old programs. While there has been a steady flow of applications for next year's four-year-old program, Council's Early Years team is eager to welcome more applications for the three-year-old program.

Helen M Kininmonth Kindergarten has a huge outdoor area and a recently refurbished indoor space, offering beautiful environments for children to take part in play-based learning.

Council's kinder programs are free, thanks to the Victorian Government.

For further details and how to apply, visit [surfcoast.vic.gov.au/kinder](http://surfcoast.vic.gov.au/kinder).

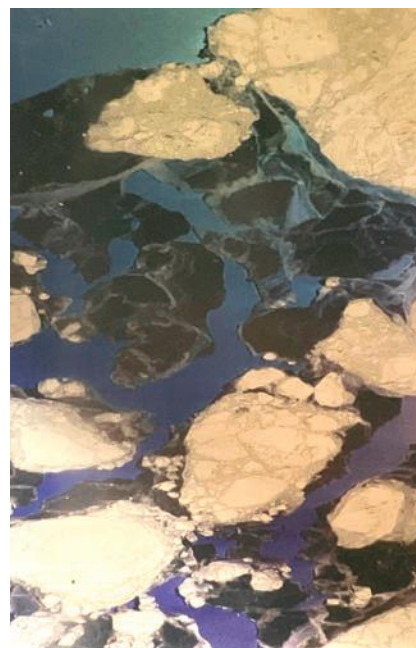
## Local photographer Kathryn Hartley

This photograph was taken whilst flying over Antarctica in 1996. The dark shapes are ice floes submerged beneath the water and the white shapes show the ice floes sitting above the water.

The journey over the ice was 4 hours in length, the whole journey 14 hours leaving from Melbourne, flying over Antarctica and returning to Melbourne. This photo was taken at 10,000 feet and at no time did we land. I took several hundred photos but this was one of my best!

This unit of photography was made more difficult during the flight as the plane was travelling at 400k per hour, dipping into the sun and everyone on board was trying to get their best shots and jockeying for positions! Often I had to climb over people to get into position. At the windows I even resorted to using the flight attendants space next to the window uninhibited.

I used a Canon EOS 500 with a combination Zoom lens with a Blue Ultra Violet Filter which has captured the sea around the ice in many and varied colours, ranging from blue to purple. I used a Polarizing lens. That's how I got the variations of colours! VERY IMPRESSIVE.







# Be a life-maker

Everyone should have the chance to try for a family.

Public Fertility Care brings family within reach for more Victorians. But we need egg and sperm donors to make this possible.

Be a life-maker. Help make the life of a child – and family – possible.



Scan to see what it means to become a donor today.

**Become an egg or sperm donor**



The text of this advertisement has been approved by the Minister for Health as required by section 40 of the Human Tissue Act 1982 (Vic) March 2024. Authorised and published by the Victorian Government, 1 Treasury Place, Melbourne.





# parkrun 14

8 June 2024

Trebeck Reserve, Winchelsea



This week 39 people completed the course through Trebeck Reserve.

Congratulations to Don, Simone, Lauren and Bailey who completed their personal best times for Trebeck Reserve. Well done everyone who walked, ran or volunteered.

We had visitors from Balyang Sanctuary, Toolern Vale, Diamond Creek, Hamilton, Bendigo, Merri Creek, Cohuna and Lalor.

This event was made possible by the following volunteers.  
Ian WAKEMAN \* Kate McINNES \* Kristen CVERKIEWICZ,  
\* Ann MORSEBY \* Mick O'MARA \* Don SMITH \* Thomas MARTIN  
\* Neil McINNES \* Jill WAKEMAN

Special thanks to Thomas who was visiting and volunteered to do the Visitor and First Timer Welcome

A summary of this week's results can be found at [trebeckreserveparkrun.com.au/results](http://trebeckreserveparkrun.com.au/results) Check out our Facebook page for today's photos and further information.

It takes a minimum of six people each week to safely conduct an event. Please email [trebeckreserve@parkrun.com](mailto:trebeckreserve@parkrun.com) if you are able to volunteer some of your time. Tasks are simple, sociable, fun and very much appreciated.

If you wish to join us any Saturday morning as a walker, runner or volunteer please complete the simple online registration at [parkrun.com.au/register](http://parkrun.com.au/register). This only needs to be done once and can be used worldwide.

Well behaved dogs on a short hand held leash are welcome (no waist harnesses please)

parkrun was conducted at 490 locations across Australia this week.





## Winchelsea...

*A thriving community*

### **Growing Winchelsea Inc General Meeting**

Tuesday 11 June 2024

6.00 - 8.30 pm

Shire Hall

Winchelsea House

### **7.00 pm Community Forum with Surf Coast Shire Council**

Come and participate, topics for discussion:

- Corella Issue
- Armytage & Hesse Street Drainage Plan
- Industrial Estate Redevelopment
- Infrastructure Needs - Pedestrians & Cyclists - Highway & Anderson Street
- Developing a Youth Hub
- Development of an open air amphitheatre on banks of the Barwon
- Issues from the floor

### **6.00 pm Join us for a light dinner**

Hot Soup with crusty bread followed by a warm dessert. Talk informally to Mayor Liz Pattison, Councillors, CEO Robyn Seymour & senior staff over dinner

### **RSVP by Friday 7 June 2024**

For catering purposes please contact Elaine Atkinson

[secretary@growingwinchelsea.com](mailto:secretary@growingwinchelsea.com)

Mobile 0458009616



### **Additional General Meeting Diary Dates for 2024**

11 November 2024 7 - 8.30 pm Winchelsea House





# The Community Bank Cup Winchelsea vs Inverleigh



Inverleigh's President Wayne McMeekin, Winchelsea President Daniel Greskie and Rob Cameron from the Community Bank

## Kelly Turner

What a thrilling day of sportsmanship and community spirit at the Community Bank Cup! Winchelsea Blues and Inverleigh Hawks battled it out across netball and football, showcasing incredible talent in every grade.

Despite a tight contest, the Cup was won by Inverleigh Hawks based on the senior football match score, winning 119-103. Congratulations to the Hawks!

Special shout out to our own staff rivals

- Ebony Berg of Winchelsea Blues, who led the A Grade netball to a victory of 45-42.
- Kealy Parke from Inverleigh Hawks, dominating D Grade with a score of 39-25.

We're immensely proud of all the players. Best on ground accolades went to:

- Rhiannon Williams from Winch Blues A Grade Netball
- Kadison Mckewan-Walsh from Inverleigh Hawks Seniors Football

Each star player received a \$100 reward for their outstanding performances.

A huge thank you to President Wayne McMeekin of Inverleigh and President Daniel Greskie of Winchelsea. Daniel is already looking forward to a rematch—let the friendly rivalry continue!

We were delighted to support each team with \$500, reinforcing our commitment to local sports and community development. Here's to more exciting matches and community collaboration!

## Quacks at Surf Coast to ban duck hunting

### Bev McArthur MP

The Surf Coast Shire has proposed to permanently close three local wetlands to duck hunters.

In April, a motion proposed the council write to the Minister for Environment, Police and Game Management Authority (GMA) to request closure of wetlands at Brown Swamp, Lake Gherang and Lake Modewarre. The motion had overwhelming support, only Cr Paul Barker opposing.

Many locals were outraged by the lack of consultation with residents, outdoor recreation groups and businesses.

Member Bev McArthur said the intervention is neglecting council responsibilities in favour of a ban on duck hunters. "Hunting has occurred at Brown Swamp, Lake Gherang and Lake Modewarre for a long time. Without consultation, it is not enough to suddenly say it should be banned for the sake of certain residents."

"The wetlands were there long before any houses, and duck hunting is a traditional, sustainable, healthy, legal activity in Victoria. It is disgraceful that Surf Coast Shire have taken it upon themselves to ban it."

In advance of Council's meeting, Mrs McArthur encouraged concerned locals to table a petition, saying "Turn up, ask questions and show councillors that they should not bow to minority activists but listen to those who understand and care about our wetlands."

At the meeting later on Tuesday, the petition opposing the motion with more than 300 signatories was accepted unanimously. A petition in support of the motion was also accepted though had fewer signatories and was submitted late. Cr Barker opposed the second petition due to its non-compliant status.

Both petitions will be referred to the General Manager for Strategy and Effectiveness with a report to be presented in three months.

## Surf Coast Shire set to become an Eco Destination

### Surf Coast Shire

The Surf Coast Shire Council has commenced a program with Ecotourism Australia to become an Eco Destination, continuing a commitment to sustainability.

Ecotourism Australia's programs are acknowledged globally for their industry standards and recognised by the Global Sustainable Tourism Council.

Surf Coast Shire Councillor Kate Gazzard said Ecotourism Australia is the national peak body for sustainable and nature-based tourism. "Getting Eco Destination Certification is a demonstration of Council's strong commitment to ongoing sustainable practices," Cr Gazzard said. "Research shows 75% travellers want to travel more sustainably and 71% want to leave the places they visit better than when they arrived."

There are 91 criteria to meet and maintain under six pillars: destination management, nature and scenery, environment and climate, culture and tradition, social wellbeing, and business sustainability and marketing.

Tourism is a vital industry sector for the Surf Coast with about three million visitors generating over \$500 million in expenditure and creating 1,700 jobs. Cr Gazzard said, "An initial preliminary assessment was very positive, and the program is envisaged to take 18 months to achieve certification. Our strengths included our Climate Emergency Action Plan, and meaningful consultation with Traditional Owners."

Council will work closely with key partner Great Ocean Road Regional Tourism and other stakeholders such as Parks Victoria, Traditional Owners and Great Ocean Road Parks and Coast Authority to achieve the certification.



# Winchelsea Star COMMUNITY NOTICEBOARD

editor@winchelseastar.org.au or  
leave at Winchelsea IGA

## SAMMY STAMPS

The long running Sammy Stamp program is still collecting your used stamps to support several charities due to the continued support of church, community groups, individuals and businesses in Vic, Tas and Australia.

Last year the amazing \$42,000 was realized from sales of the used stamps. In 2023 grants to the value of \$38,500 were approved to several charities. Since the program started in 1977, the amazing amount of \$1,158,393.

A group of helpers gather weekly to trim and sort the stamps.

If you would like to be involved in saving postage stamps, please contact Jeanette Mcconachy 0409418766 to arrange collection.

Stamps can be trimmed leaving 1/2" surround.

## Winchelsea Football & Netball Club Inc. POSITION AVAILABLE

The Club is looking for someone young, responsible and tech savvy to look after our electronic scoreboard on home game days (usually 9 per season) for the rest of this season going forward into season 2025. The position includes acknowledging goals, the scores and circulating sponsor's advertisements during the game. This is a paid position.

Enquiries contact President Daniel Greskie 0421 377 492 or Secretary Janet Fletcher 0400 783 408.

## 4 SHEEP FOR SALE.

Ewe 5 years old. \$70. Ph 0410 165 346.

## WINCHELSEA LIONS CLUB

Planning Christmas in July? Winchelsea Lions have Large cakes \$20 Small cakes \$16 Puddings \$16  
Raymond 0406 371 239

## ITEMS FOR SALE

### White Magna with rego

6 cylinder auto, great first car \$500 ONO.

**Large generator** \$300, paid \$600, hardly been used.

**Small generator** \$50,

**whipper snipper** \$20

Must sell ASAP contact 52 672 954

## WINCHELSEA PICKLEBALL

Winchelsea Leisure Time Centre  
(next to the Primary School)

Wed 7-830pm or Thurs 10-11.30am.

All equipment supplied,  
wear suitable footwear.

Lesley Mathison 0438 672 197

Winchelsea Tennis Club

## JUNIOR COACHING

Mondays from 3.30pm with experienced  
Nicole Mullen, \$10

## SOCIAL TWILIGHT TENNIS

Monday evenings from 6.00pm.

All Welcome!

# Winchelsea Star Since 1977

send your stories  
news@winchelseastar.org.au

## LOCAL NEWS and ARTICLES WELCOME

Include name and address of the sender

Email news@winchelseastar.org.au

Leave hard copy at IGA Supermarket

## DEADLINE 5pm Fridays

4pm Sundays - hard copy articles left at IGA

6pm Sundays - sports results and weekend events

## ADVERTISING

advertising@winchelseastar.org.au 0408 102 802

## free digital subscription

winchelseastar.org.au

## FOLLOW US ONLINE

winchelseastar.org.au

## FACEBOOK

facebook.com/TheWinchelseaStar

## production

**Editors:** Cerrie Fogan, Yvonne Stevens, Judy Cameron

**Advertising:** Sasha Gauntlett, Neil McInnes

**Design:** Tony Phelps, Susan Corby

**Printing:** Winchelsea Community House

**Website:** Winch Websites

## committee

**President:** president@winchelseastar.org.au  
Neil McInnes

**Treasurer:** treasurer@winchelseastar.org.au  
Cathy Cheadle

**Secretary:** secretary@winchelseastar.org.au  
Tony Phelps

**Members:** Linda Carter, Sasha Gauntlett,  
Judy Cameron, Yvonne Stevens,  
Cerrie Fogan



© Winchelsea Star Org. Inc. All rights reserved  
Winchelsea Star Organisation Inc.  
Reg. No. A0053999F ABN 75 941 529 279  
winchelseastar.org.au PO Box 5 Winchelsea 3241  
Views expressed are not necessarily those  
of the Winchelsea Star or its Committee.  
The Winchelsea Star reserves the right  
to edit or not publish any article.





**We are hiring at our Winchelsea branch!!**  
 We are looking for a receptionist/vet nurse hybrid  
 for our Winchelsea consult clinic.  
 Monday 3-5pm, Wednesday 8:30am-11:30am,  
 Thursday 11am-3pm  
 Some reception/nursing shifts at our redesigned  
 Colac premises may also be available too.  
**Applications: rhondacolbourne@colacvet.com.au**

**Now Hiring!!!**  
**Winchelsea Branch**



**Winchelsea Community House Inc.** A6247K  
 28 Hesse Street, Po Box 75, Winchelsea, Vic. 3241  
 Phone: 5267 2028 Email: [manager@winchhouse.org.au](mailto:manager@winchhouse.org.au)  
 ABN: 48 932 340 254

Expressions of Interest  
**CLEANER REQUIRED:**  
**WINCHELSEA SHIRE HALL**

Winchelsea Shire Hall invite interested cleaners  
 to submit a letter of application for cleaning services  
 of our Shire Hall located at Winchelsea.

2 hours clean per week (min),  
 and additional cleaning as required/requested.

You must provide:

- Australian Business Number (ABN)
- Public Liability Insurance
- Substitute cleaner/s to cover periods of leave.
- Proof of Australian Citizenship  
 or a current work visa to work in Australia.
- Hourly rate of pay

Please direct enquiries to Wendy Greaves  
 E: [manager@winchhouse.org.au](mailto:manager@winchhouse.org.au) Ph: 5267 2028

Please forward your application letter via email to  
[manager@winchhouse.org.au](mailto:manager@winchhouse.org.au) outlining and confirmation of  
 the above requirements by 19 June 2024



**Winchelsea Girl Guides**  
**Help Needed Please**

Are you interested in joining an enthusiastic,  
 self-motivated team working with girls, 5 - 15 years?

The Winchelsea Girl Guides are seeking  
 female adult volunteers.

We are losing our lovely Unit Helper Teresa, who is moving  
 to Geelong, and to comply with adult child ratios we need to  
 recruit more helpers.

Come and help us provide a stimulating program giving  
 leadership development opportunities for girls, as well as  
 providing fun and friendship.

You will need -

- Police Check clearance (provided by Guide Centre)
- Working with Children Check (free when working  
 as a volunteer)

Phone Yvonne 0448 672630

## Connecting Men's Sheds across Victoria

### Victorian Government

The State Government is making sure men's sheds  
 are the best they can be thanks to a pilot project that  
 will better connect sheds across the state.

Minister for Carers and Volunteers Ros Spence this week  
 announced \$100,000 to increase engagement between sheds -  
 boosting the sharing of knowledge and resources between men's  
 sheds, to improve their work to support their local communities.

The Victorian Men's Shed Association will help design and plan  
 how the project will be implemented.

Men's sheds are run by volunteers who donate their valuable  
 time to create a safe space for men who are at risk of social  
 isolation, providing opportunities for them to be involved in  
 community projects, learn new skills and build friendships.

Activities for shedders are diverse and range from community  
 projects such as making toys for local childcare groups to  
 assisting with emergency responses and preparedness.

Research shows men's sheds allow men to talk about health  
 issues and seek support from their peers, improving health and  
 wellbeing outcomes, particularly for older men.

The pilot project is in addition to \$1 million delivered annually  
 to upgrade men's sheds and support the work of the Victorian  
 Men's Shed Association.

The Government recently awarded grants of up to \$100,000 to  
 28 men's sheds to help build new sheds and fund extensions and  
 refurbishments, providing 487 grants to men's sheds since 2015.

To view the full list of grant recipients visit [providers.dffh.vic.gov.  
 au/mens-shed-program](http://providers.dffh.vic.gov.au/mens-shed-program).



# WINCHELSEA FACEBOOK

## Non-profit community Groups and Pages

What's on in Winchelsea	<a href="https://facebook.com/WhatsoninWinchelsea">facebook.com/WhatsoninWinchelsea</a>
Winchelsea FREE	<a href="https://facebook.com/groups/winchelseafree">facebook.com/groups/winchelseafree</a>
Winchelsea Community Information	<a href="https://facebook.com/groups/207538644446972">facebook.com/groups/207538644446972</a>
Winchelsea Classifieds 3241	<a href="https://facebook.com/groups/216942861684082">facebook.com/groups/216942861684082</a>
Winchelsea Lost and Found	<a href="https://facebook.com/groups/768187693217518">facebook.com/groups/768187693217518</a>
Winchelsea Op Shop	<a href="https://facebook.com/HospitalAuxiliaryOpShopWinchelsea">facebook.com/HospitalAuxiliaryOpShopWinchelsea</a>
Winchelsea Shire Hall	<a href="https://facebook.com/WinchelseaShireHall">facebook.com/WinchelseaShireHall</a>
Winchelsea Community House	<a href="https://facebook.com/winchelseacommunityhouse">facebook.com/winchelseacommunityhouse</a>
Winchelsea Coronavirus Community Support Group	<a href="https://facebook.com/groups/2676957719207927/">facebook.com/groups/2676957719207927/</a>
The Green Winchelsea Residents	<a href="https://facebook.com/groups/515322772623126">facebook.com/groups/515322772623126</a>
Growing Winchelsea Inc	<a href="https://facebook.com/growingwinch">facebook.com/growingwinch</a>
Winchelsea Star	<a href="https://facebook.com/TheWinchelseaStar">facebook.com/TheWinchelseaStar</a>
Winchelsea Movie Club	<a href="https://facebook.com/winchelseamovies">facebook.com/winchelseamovies</a>
Winchelsea Community Market	<a href="https://facebook.com/100083362387611">facebook.com/100083362387611</a>
Winchelsea Land and River Care Group	<a href="https://facebook.com/envirowinchelsea/">facebook.com/envirowinchelsea/</a>
Upper Barwon Landcare Network	<a href="https://facebook.com/UpperBarwonLandcare">facebook.com/UpperBarwonLandcare</a>
Winchelsea & District Historical Society Inc	<a href="https://facebook.com/Winchelseaanddistricthistoricalsociety/">facebook.com/Winchelseaanddistricthistoricalsociety/</a>
Winchelsea Wildlife Shelter	<a href="http://www.winchelseawildlifeshelter.com/">www.winchelseawildlifeshelter.com/</a>
SCARS - Surf Coast Animal Rescue Service	<a href="https://facebook.com/groups/415211698950674">facebook.com/groups/415211698950674</a>
Winchelsea Gardeners	<a href="https://facebook.com/groups/779878518703025">facebook.com/groups/779878518703025</a>
Winchelsea & District Historical Society	<a href="https://facebook.com/Winchelseaanddistricthistoricalsociety/">facebook.com/Winchelseaanddistricthistoricalsociety/</a>
Winchelsea Repertory Society Inc	<a href="https://facebook.com/winchrep/">facebook.com/winchrep/</a>
Winchelsea Globe Theatre	<a href="https://facebook.com/Winchelsea-Globe-Theatre-164790897641678">facebook.com/Winchelsea-Globe Theatre-164790897641678</a>
Winchelsea Uniting Church	<a href="https://facebook.com/winchelseaunitingchurch">facebook.com/winchelseaunitingchurch</a>
St Thomas' Anglican Church	<a href="https://facebook.com/StThomasWinchelsea">facebook.com/StThomasWinchelsea</a>
St John the Baptist Catholic Church	<a href="https://facebook.com/pages/Winchelsea-Catholic-Church/101775670163180">facebook.com/pages/Winchelsea-Catholic-Church/101775670163180</a>
Winchelsea Mainly Music	<a href="https://facebook.com/groups/668500343953191/">facebook.com/groups/668500343953191/</a>
Winchelsea Health Club	<a href="https://facebook.com/WinchelseaHealthClub">facebook.com/WinchelseaHealthClub</a>
Winchelsea Playgroup School terms only. Contact Danni 0432 019 944	<a href="https://facebook.com/groups/551663435367031">facebook.com/groups/551663435367031</a>
Winchelsea Girl Guides	<a href="http://www.guidesvic.org.au/">www.guidesvic.org.au/</a>
Winchelsea/Modewarre Scouts	<a href="https://facebook.com/1stModewarreScouts">facebook.com/1stModewarreScouts</a>
Winchelsea Fire Brigade	<a href="https://facebook.com/winchelseafirebrigade/">facebook.com/winchelseafirebrigade/</a>
Winchelsea SES	<a href="https://facebook.com/groups/WinchSES">facebook.com/groups/WinchSES</a>
Country Women's Association - CWA Winchelsea	<a href="https://facebook.com/pg/CWAWinchelsea/">facebook.com/pg/CWAWinchelsea/</a>
Winchelsea Bowls Club	<a href="https://facebook.com/Winchelsea-Bowls-Club-533783333344345/">facebook.com/Winchelsea-Bowls-Club-533783333344345/</a>
Winchelsea Blues Cricket Club	<a href="https://facebook.com/groups/8999049476/">facebook.com/groups/8999049476/</a>
Winchelsea Blues FC	<a href="https://facebook.com/WinchelseaFNC/">facebook.com/WinchelseaFNC/</a>
WYLD Winchelsea Youth Leisure and Drop in	<a href="https://facebook.com/groups/569737570027065/">facebook.com/groups/569737570027065/</a>
Lions Club of Winchelsea	<a href="https://facebook.com/LionsWinchelsea">facebook.com/LionsWinchelsea</a>
Winchelsea Probus	<a href="https://facebook.com/893535194971083">facebook.com/893535194971083</a>
Winchelsea Golf Club	<a href="https://facebook.com/winchelseagc/">facebook.com/winchelseagc/</a> <a href="https://facebook.com/groups/1324943804676697">facebook.com/groups/1324943804676697</a>



# State Funeral Service to honour Aunty Fay Carter OAM

## Victorian Government

A State Funeral Service to honour the life of revered Dja Dja Wurrung and Yorta Yorta Elder Aunty Fay Carter OAM will be held at 10 am on 12 June at the Ulumbarra Theatre, Bendigo.

Aunty Fay was a tireless advocate who dedicated herself to Victoria's Aboriginal communities. She played an outstanding leadership role in a range of aged care, childcare and health agencies, including founding several key services.

With the Aboriginal Community Elders Service, Aunty Fay contributed to the opening of a community controlled aged care centre for culturally appropriate services for Aboriginal Elders and managed the centre for 16 years.

For two decades, Aunty Fay was a member of the Victorian Branch of the National Aboriginal and Islander Day Observance Committee. She was also a founding member of Australia's first Aboriginal women's refuge and served as Chair of the Victorian Aboriginal Child Care Agency (VACCA) for 10 years.

Later, she was involved in negotiations that achieved a landmark native title settlement recognising the Dja Dja Wurrung People

as Traditional Owners of her home Country stretching across Victoria's central plains.

In recognition of her leadership and contributions, Aunty Fay Carter was inducted into the Victorian Aboriginal Honour Roll in 2013 and awarded the Medal of the Order of Australia in 2019.

In 2022, as part of Victoria's ongoing truth-telling process, Aunty Fay shared testimony at the Yoorrook Justice Commission Elders' Hearing about the racism she and her family had encountered.

Whether through her work for government or the community-run organisations she served, Aunty Fay strived for the best outcomes for Aboriginal people. Many have lived healthier and more prosperous lives because of her efforts.

At the request of the Carter family and in lieu of flowers, tributes may be made in the form of a contribution to the Aboriginal Community Elders Services via [acesinc.org.au/about-us/donate](https://acesinc.org.au/about-us/donate)

The funeral will be open to the public and live streamed online. Further details about the service, including how to attend and view the livestream can be found at [vic.gov.au/AuntyFay](https://vic.gov.au/AuntyFay)



## Steps to Accessing Aged Care

Your questions answered

Estia Health are proud to present free information sessions to help you understand and access the support you need.

- Navigating the aged care system from home care to residential care (for those requiring more support)
- Accessing government funding
- The benefits of respite care for you and your carer
- Become a volunteer and make a difference in the lives of those living in residential care
- Demystifying residential aged care

**WHEN: Tuesday 18<sup>th</sup> June 2024 10:30am**  
**(Morning Tea Provided)**

**WHERE: Winchelsea Community House, 28**  
**Hesse Street, Winchelsea Vic 3241**



**SEEKING VOLUNTEERS!**

The Winchelsea Community Foodbank is looking for some friendly faces to volunteer. If you have a few hours available on a Friday and are keen to help, we'd love to hear from you!

For more information contact Hannah  
[healthpromotion@hesse.vic.gov.au](mailto:healthpromotion@hesse.vic.gov.au)  
0417 848 292



Café La Hoot

have you tried  
'owl' coffee?

1 willis st [cafelahoot@gmail.com](mailto:cafelahoot@gmail.com) 0407 528 999

## TRENCHES & HOLES PTY LTD.



**PHILLIP ROBERTSON**

☎ **0427 672 945**

**WINCHELSEA**

- General Earth Works
- Driveways
- Trencher
- Kanga Loader
- Grader
- Excavator Work (3.5 & 6.5 Tonne)
- Tip Truck
- Rock Breaker
- Post Holes & Shed Footings

A.B.N 74006896898

**WAZZA'S**  
WATER CARTAGE

Stainless Tanker Up to 22,000 ltr loads  
Barwon Water Registered

Domestic & Rural Water Supplies

Call Wazza  
Mob: 0428 877 260  
Email: [wazza@wazzas.com.au](mailto:wazza@wazzas.com.au) Web: [wazzaswater.com](http://wazzaswater.com)

## M & L DRAYTON PLUMBING SERVICES

REG No 24356 C/A No C02594

- Domestic and Rural Plumbing
- Roofing
- Sewerage & Septic
- LPG & Natural Gas Connections
- Motorised Drain Cleaning
- Backhoe Hire

**Phone Mark 5288 7244**  
PO BOX 98 WINCHELSEA 3241  
**Mobile 0428 520 142**



- DECKS - SAUNAS
  - FLOORING - PERGOLAS
  - WEATHERBOARDS
  - HORSE SHEDS
  - CLADDING - FENCES
- ALL THINGS TIMBER AND MORE...

INSTAGRAM [guim\\_designs](https://www.instagram.com/guim_designs)

CALL PAT ON

**0401 232 674**



# SERVICES & ACTIVITIES - WINCHELSEA

## VLINE TRAIN SERVICES

### TO MELBOURNE:

Mon - Fri 6:41 am, 7:57am, 11:14am, 2:08pm, 7:23pm  
Sat - Sun 9:26am, 1:30pm, 7:18pm

### TO WARRNAMBOOL:

Mon - Fri 8:56am, 11:55am, 2:50pm, 5:27pm,  
6:45pm, 8:50pm  
Sat - Sun 8:47am, 2:46pm, 8:34pm



## COUNTRY WOMEN'S ASSOCIATION

7pm second Wednesday of month  
Winchelsea Senior Citizens' Hall



## WINCHELSEA SES

Every Wednesday  
Visitors and inquiries welcome  
0408 102 802



Winchelsea and District

## COMBINED PROBUS CLUB

Senior Citizens Rooms,  
Harding St, Winchelsea.  
New members always welcome.  
Enquiries Linda 0439 817 263.

## WINCHELSEA TRANSFER STATION

55 Cressy Road, Winchelsea

Monday	Closed	Tuesday	2pm-4pm
Wednesday	Closed	Thursday	2pm-4pm
Friday	Closed	Saturday	1.30-3.30pm
Sunday	9.30-12.30pm		

All waste disposal sites are closed on Christmas Day,  
but open on other public holidays that fall  
during their normal operating hours.

[www.surfcoast.vic.gov.au/disposalsites](http://www.surfcoast.vic.gov.au/disposalsites)



## WINCHELSEA GIRL GUIDES

Our Unit meets at the Catholic Church Hall,  
Harding St Winchelsea each Monday 4.30pm-6pm  
All girls 5yrs- 15yrs Welcome!  
Contact Yvonne Orchard 0448 672 630  
or Emily LaPorte Phone 0476 719 381



1st Modda & 1st Winchelsea

## SCOUT GROUP

**Joey's:** Tuesdays of school term 5-6pm  
**Cubs:** Mondays of school term 6:30-8pm  
**Scouts:** Tuesdays of school term 6:30-8:30pm  
All at Modewarre Hall, Cape Otway Rd  
**Venturers:** Wed at Walton's Rd Venturer Den  
Contact Marie McPadden 0409 330147



## BUS TO THE HUB

For reservations on the weekly bus  
to the Eastern Reserve Hub,  
please phone 52671202.

## SURF COAST MOBILE LIBRARY

Hesse St, Fridays, 2pm-5pm

Surf Coast Mobile Library  
parked in Hesse Street (outside Shire Hall)  
Fridays 2:00 and 5:00pm unless it is a Public Holiday.

## WINCHELSEA TAXI

0429 672 888 or 5267 2888

Wheelchair accessible  
10 seater bus available.

## WINCHELSEA PLAYGROUP

Every second Thursday 10am-12pm  
St Thomas Anglican Church Hall  
cnr Barwon Tce and Hopkins St, Winchelsea  
Contact: Danni Menzies 0432019944  
[winchelseaplaygroup@gmail.com](mailto:winchelseaplaygroup@gmail.com)  
Facebook - Winchelsea Playgroup 2019  
**New families welcome**

# Council endorses funding submissions to upgrade sporting facilities

## Surf Coast Shire

A project to upgrade Spring Creek Reserve change facilities to include female friendly change rooms could receive additional funding with Council endorsing the submission of a grant application to the Australian Football Facilities Fund (AFFF).

Two other projects endorsed for the submission of a grant application to a second fund, the Breaking New Ground Fund (BNGF), include:

- Exploring the potential for new lighting at the Bellbrae Reserve Sports Ground, and
- An open space upgrade at Torquay College.

Both of these grants are part of funding opportunities from the Australian Football League.

“With the growth of female and junior sport in Torquay the pressure is on our sporting grounds, not just for matches but also for training,” Surf Coast Shire Cr Rose Hodge said.

“Upgrading these grounds and facilities will allow our sporting teams to have room to train and not be sharing grounds with older teams or training at inconvenient times”, she said.

“Providing change facilities that can easily accommodate our female football and cricket players at Spring Creek reserve is a must for our growing town. Being able to enable more females to keep playing sports they love with well-developed facilities ensures the continued growth and success of the Torquay Football, Netball and Cricket clubs”.

The AFFF fund provides \$50,000 for the project delivery stage of a project. The Spring Creek Reserve Female Friendly Change Facilities Project will upgrade the existing change rooms to include gender neutral shower and toilet cubicles to benefit football and cricket. This project has secured \$700,000 from the Australian Government and Council officers have recently applied for an additional \$1 million in funding from the Regional Community Sports Infrastructure Fund (RCSIF). If the RCSIF application is successful, Council will submit an application to the AFFF.

The BNGF fund provides \$50,000 for planning and up to \$250,000 for the project delivery stage. The Bellbrae Reserve Sports Ground has limited use in winter without lights. Upgrading the lighting at this ground will further activate this facility. Community engagement with the Bellbrae community will occur during the planning phase, allowing Council officers to understand any concerns the community may have and discuss options.

Council officers are also investigating an open space project at Torquay College. Discussions will continue with the representatives from the college and the school council. The project scope is still being developed for this project, once approval has been received from Torquay College, a submission will be prepared for the BNGF.

More information about projects around Surf Coast Shire can be

## Winchelsea Bowls Club

facebook.com/

Winchelsea-Bowls-Club-533783333344345/



## Winchelsea Primary School Netball Team advances to next round

Nick Keating

On Friday, 31May, Winchelsea Primary School sent football and netball teams to the local school sports carnival. All of our netball and football teams had some wins, but the highlight of the day was the Girls Netball taking out the title – beating a much larger school in Mt Duneed Regional in the final.

Their next adventure as a team is this coming Thursday, at Kardinia Park, where they take on other winners from across the Geelong area. From all of us at WPS, we wish them all the best for another great day!



## WINCHELSEA GOLF CLUB

Ph 5267 2660

Great little country 9 hole golf course  
run by an enthusiastic team of volunteers



# WINCHELSEA RAILWAY STATION



## WINCHELSEA HISTORICAL SOCIETY

Hesse Street Cnr Princes Highway Winchelsea 3241  
OPEN Wednesdays 1 - 4pm Fridays 10 - 3pm

The Winchelsea railway station was opened to much fanfare on November 25 1876 by the Minister for Railways.

A special train left Melbourne at 10.45 am. When the train arrived residents welcomed the guests and then proceeded to the Shire Hall for the opening ball and banquet. About 400 people assembled to witness the opening of the railway.

Charles Roberts was station master in 1886. The goods shed was in Winchelsea for 100 years.

The original station included the station master's residence, refreshment rooms and ticket sales.

Before the use of the rail line the well known Cobb and Co coach business transported western district residents and in 1867 conveyed H.R.H the Duke of Edinburgh to Winchelsea for the opening of the bridge.



16-81-27

Winchelsea Railway Station.





# Winchelsea Golf Club Open Week

Sue Cuthbert

**WINCHELSEA GOLF CLUB INC.**  
GREEN FEE PLAYERS WELCOME  
PH: 5267 2660  
www.winchelseagolfclub.com.au

**Bendigo Bank** **DIAMOND WINDOWS PTY. LTD.**

Winchelsea Golf Club held their 64th Annual Open Tournament from Monday, May 27 to Sunday, June 2 with events being held on 5 days.

The weather was kind (apart from a foggy start Saturday and the occasional drizzle), the fields were nearly full and the week was well supported by our district clubs with players also coming from Koorngal in Melbourne.

Our thanks go to our Major Sponsors -

- Thrifty Furniture Megastore - Our Tournament Naming Sponsor
- Bendigo Bank Winchelsea Community Bank
- Bakerland

Also thanks to Maguires Butchers who donated Meat Trays to be raffled every day and Loretta Breheny from Brown Magpie Wines for Nearest the Pin prizes.

The support we receive from all our sponsors is greatly appreciated.

Thank you to all the volunteers who worked in the Clubhouse, kitchen and the bar over the week, and last but certainly not least, thanks to the Greenskeeper Rod Batson and his band of workers who presented the course so well.

## Monday May 27th - Womens Open

A Grade Gross Winner - Sarah Jenkins Torquay 80  
Runner Up - Heather Harley Koorngal 82  
A Grade Nett Winner - Ros Brauer Colac (11) 74  
Runner Up - Sarah Jenkins (4) 76  
B Grade Stableford - Sandra Hofmaier Barwon Valley 36pts  
Runner Up - Judy Mather East Geelong 34 pts  
NTP: 2/11 Ros Brauer 6/15 Chris Spencer 8/17 Sarah Jenkins  
Our thanks go to Cheryl Mawson for donating A and B Grade prizes, Lissa from Bakerland who provided Goodie bags for all players as well as donating very generous door prizes.



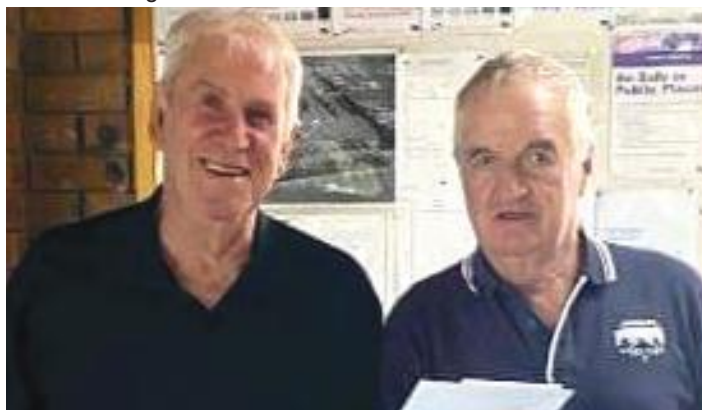
L/R Ros Brauer Sarah Jenkins



L/R Sandra Hofmaier Judy Mather

## Wednesday May 29 - Mens 4BBB

Winners - Ken Stanesby(12) and Rod Batson(27) 45 pts  
Runners Up - Martin Pfarrer (12) and Henk Kersten (13) 43 pts  
NTP: 2/11 Neil Hickman 6/15 Grant Cole 8/17  
Chris Currington



L/R Ken Stanesby Rod Batson





**Friday May 31 - Riverview Two Person Ambrose**

This event was full with 56 players taking to the field. Once again Lissa from Bakerland provided all players with a Goodies bag and donated a very generous door prize.  
Winners - Mens - David Lewis and Chris Currington 64.75  
Womens - Tara Steward and Di Bartel 69.75



L/R Tara Steward Di Bartel



L/R Dennis Waterfall Elizabeth Alston

**Saturday June 1 - Mens Open**

Winner - Bert Coates Cup - 27 Holes - Max Christie (+3) 103  
27 Hole Nett - A Grade - Richard Dalton (+2) 106  
B Grade - Sean Palensky (15) 105.5  
27 Hole 50+ - Greg Welsh (4)110



L/R Brent Kahle Bernie Perry Max Christie



L/R Steve Preston Sally Dyer Barry O'Donnell

**Sunday June 2 - Mixed Pinehurst**

Thank you to Diamond Windows for donating the winners vouchers and Brown Maggie Wines for Nearest the Pin prizes.  
Winners - Tara Steward and Cam Parke 66.75  
Runners Up - Elizabeth Alston and Dennis Waterfall 69.62  
NTP: 2/11 Sally Dyer 6/15 Steve Preston  
8/17 Barry O'Donnell



L/R Tara Steward Cam Parke

**Congratulations** to the Ladies team of Elizabeth Alston, Carol Stanesby and Tara Steward for winning the Bacchus Marsh West Silver Bowl on Thursday June 6. It was the first time Winchelsea had entered a team in this event so it was a great effort. Elizabeth had 27 pts, Carol had 29 pts and Tara had a fantastic score of 43 pts. Tara's score was the best of the day, winning the B Grade event and being instrumental in Winchelsea winning the Silver Bowl.



L/R Carol Stanesby Elizabeth Alston Tara Steward





**The Country Women's Association of Victoria Inc.**

**care empower contribute**

# Join Us!

## **POLWARTH GROUP CREATIVE ARTS AND HOME CRAFTS EXHIBITION, 2024**

**Open to the Public**

**Thursday 27 June**

3pm to 4:30pm

**Friday 28 June**

10am to 4pm

**Official Opening**

Friday at 11am

Entry \$10 (includes raffle ticket)

**CWA Merchandise and Produce stall**

Venue: Ss Johns Hall

17 Hesse Street, Colac



## **Cup Cake Competition**

**Open to everyone**

**6 Decorated Cup Cakes**

**Cash Prizes**

**Age Groups**

**U12's, U18's & over 18**

Drop Off: Ss Johns Hall

Date: Thursday 27 June

Time: 8:30 – 11:30 am

Cost \$5:00

**Winners announced at  
Official Opening on 28 June**



**Devonshire tea  
available Friday  
till 2:30pm (unless sold out)**



**Contact:**  
e: [PolwarthGroupCWA@outlook.com](mailto:PolwarthGroupCWA@outlook.com)

**Facebook - CWA Polwarth Group**

*We respect First Nations Elders past, present and future and acknowledge the stories, traditions and living cultures of First Nations peoples of the lands on which our members meet, and commit to building a brighter future together.*





# Polwarth Group CWA

## Creative Arts Exhibition in Colac

Polwarth Group CWA is hosting a Creative Arts Exhibition in Colac on Thursday evening 27 June 2024, and Friday 28 June to showcase and celebrate the many talents of its members.

Exhibits on display will cover a large variety of categories including Jams and Preserves, Cookery, Toys, Dolls,

Embroidery, Hand Knitting, Photography and Floral Art.

A special competition will be included this year. An open invitation to anyone who would like to put their baking skills to the test. You do not have to be a CWA member. And this competition is open to the fellas too!

The general public competition is for 6 decorated CUP CAKES. There will be a

cash prize for the winning entries, as well as the glory in winning the competition! Entry details will be available on our social media pages in the coming week.

The exhibition will be held at St John's Hall in Pollack Street Colac. CWA entries are to be formally judged on Thursday morning, with the winners announced at the official opening on Friday at 11am. The doors will be open at 10am on Friday morning.

Can't wait to have a look? An early bird public viewing will be held on Thursday at 3pm to 4.20pm. Come along for a sneak peek before the official opening on Friday.

The exhibition will be opened by the Mayor of Colac Otway Shire. Special guest speakers from the Meli Organization who facilitate emergency Foster Care Bags. The CWA Polwarth Group have been supplying foster care relief bags for years, however there is always room for a few more Community Groups to join in. This is your opportunity to learn more about this wonderful program.

The enormously talented members of the CWA have created a vast array of works. Many of which have generously been donated to hospitals and charities over many years. This year's exhibition will be no different,

"This Creative Arts Exhibition provides an opportunity for CWA members and community members alike to receive some local recognition for their talents and provide inspiration to others."

A variety of goods will be available at the Exhibition for purchase including preserves, baking, CWA cookbooks and merchandise to raise funds to further the important work of the Country Women's Association of Victoria.

Entry is \$10 per person. Entry covers both days. Devonshire Tea will be available for \$7 per person on Friday.

Email [polwarthgroupcwa@outlook.com](mailto:polwarthgroupcwa@outlook.com), or for further details or visit the CWA Polwarth Group Facebook page.

CWA Polwarth Group: Barongarook, Birregurra, Colac Night Owls, Irrewarra and Winchelsea branches



**The Country Women's  
Association of Victoria Inc.**

**care empower contribute**

**Polwarth Group**

**Entry \$5 cash only at delivery. Please make sure entries are covered.**

# CUP CAKE COMPETITION

## CREATIVE ARTS & HOME CRAFTS EXHIBITION

### Open to general public

### 6 Decorated Cup Cakes

### CASH PRIZES - *Be in it to win*

**Age Groups : Under 12, Under 18 and Over 18**

**Drop Off: Ss Johns Hall Cost \$5:00 (cash only)**

**Date: Thursday 27 June Time: 8:30 - 11:30 am**

**Winners announced at Official opening, Friday 28 June at 11 am**

Contact:  
e: [PolwarthGroupCWA@outlook.com](mailto:PolwarthGroupCWA@outlook.com)

Facebook - [CWAPolwarthGroup](https://www.facebook.com/CWAPolwarthGroup)

We respect First Nations Elders past, present and future and acknowledge the stories, traditions and living cultures of First Nations peoples of the lands on which our members meet, and commit to building a brighter future together.

# Winchelsea Community Market



Shire Hall  
9am - 1pm

7 July 2024  
4 August 2024  
1 September 2024

6 October 2024  
3 November 2024  
1 December 2024

**Kyeema**  
Rural Fencing Pty. Ltd.  
Jason Armstrong & Jay Hawker  
1080 Prices Lane, Ombersley, Victoria, 3241  
0419 565085 (Jason)  
0416 585817 (Jay)  
kyeemafarm@kyeemafarm.com.au  
Also incorporating domestic and rural tree trimming services.

**RICHARDSONS**  
SEPTIC TANKS - GREASE TRAPS - INTERCEPTOR PITS  
5234 6585 0417 385 984  
For all your septic tank, grease traps and interceptor pits servicing.  
Locally owned and operated

## CONCRETER

Alister Aitken

**No job to big or small**

- Driveways - Carports - Crossovers - Footpaths - Sheds Slabs - Colored Concrete - Concrete sealing - Exposed Aggregate - & more -

Call or text for a no obligation free quote

Servicing our local Winchelsea & Surrounding Areas

alaitken.aa@gmail.com or Alister - 0411 871 950

A.B.N 47 228 574 460

**Dance**  
**ENROLMENTS**  
**NOW OPEN!**  
Winchelsea  
Dance Classes  
**REGISTER NOW**

JAZZ - THEATRICAL TAP - HIP-HOP  
CLASSICAL BALLET - CONTEMPORARY  
Pre-School - Adults  
Beginner - Advanced Levels

[www.melsdancecentral.com.au](http://www.melsdancecentral.com.au)

**mainly music**  
est. 1990

Fun, Interactive music sessions for pre-school children (0-4 y.o.) and parents/caregivers

**When:** Mondays from 10 to 11 am  
(runs during school terms)

**Where:** St Thomas' Hall  
25 Barwon Tce.

To Enquire ring: 0407838256





## **Winchelsea Community House and Shire Hall**

Hours: Monday-Friday 9.00am -2.00pm

Address: 28 Hesse Street, Winchelsea

Phone: 52672028

[www.winchhouse.org.au](http://www.winchhouse.org.au)

Email: [reception@winchhouse.org.au](mailto:reception@winchhouse.org.au)

### **Term 2, 2024**

#### **Singing Group**

When: Wednesday afternoons 4.45pm-6pm

Next session: Wednesday 12 June, 2024

Winchelsea Community House Space

Cost \$7.50 per session Under 16 free

Bookings: [reception@winchhouse.org.au](mailto:reception@winchhouse.org.au)

#### **Chatty Cafe**

When: Friday mornings 10.30am-12 noon  
(during school terms).

Next Session: Friday 14 June, 2024

Winchelsea Shire Hall Space

No bookings required.

We will have our Chatty Café Volunteers present to welcome you.

#### **Tai Chi**

When: Friday mornings 9.00am-10.00am

(During school terms)

\$10 per session

Next Session Friday 14 June, 2024

#### **Sound Healing**

When Wednesday 3rd July, 2024

Winchelsea Shire Hall Space

\$40 per session. Bookings now open

Please call Vicki on 0400 149 749

#### **Certificate 111 in Individual Support 2401**

Expressions of interest being taken for a course to start. Approx 13 hours per week – face to face over 2 days for around 36.5 weeks plus 120 hour placement.

#### **Crochet Group**

When: Alternate Saturday afternoons  
1.30pm,

Winchelsea Shire Hall Space

\$5 per session

Next Session Saturday 15 June, 2024

#### **Knitting Group**

When: Thursday mornings 10.30-12 pm  
(during school terms)

Next Session: Thursday 13 June, 2024

Come along and learn to knit or bring your knitting project and come and chat with others.

Winchelsea Community House Space

#### **Certificate 111 in Early Childhood Education and Care**

Expressions of interest being taken for a course to start. Approx 13 hours per week – face to face over 2 consecutive days for around 40 weeks plus 160 hour placement.

#### **Gentle Movement** (NEW DAY!)

Cost \$5 per session

Next Session Thursday 13 June, 2024  
at 1pm

Winchelsea Community House Space

Community Houses such as ours provide programs and activities to learn new skills, brush up on your existing skills and more than anything to connect with others in your community and reduce social isolation.

New skills may help you with employment and build your confidence to in turn help others.

Activities such as singing and sound healing help your mind and reduce any unwanted stresses.

Have a think about doing something for yourself and join in our activities.

# MRP Steelworx

Matthew Partridge

p 0418 672 334

e mrpsteelworx@yahoo.com.au

## Welding Service

- Onsite welding
- Farm maintenance
- Farm machinery & equipment repairs
- Cattle & sheep yards
- Custom built trailers
- Supply & install gates



5234 6585 0417 385 984

For all your domestic & stock water.  
Also available for road and civil construction  
Local owned and operated.

52672192 R & K Creative Framing  
for all your framing needs

free quotes  
pension discount  
specialist in Age &  
Disability Modifications

Ray & Kim Jansen  
10 Witcombe st  
Winchelsea 3241

Ray The Home  
Maintenance HANDYMAN

abn 47928623462

0414672192



Winchelsea  
Supermarket

Trading Hours

Monday to Saturday

8.30am to 7.30pm

Sunday

10am to 7pm

Ph: 5267 2676

29 Main St, Winchelsea

## Antique Repairs

By Doug Burns est. 1976

- All Furniture
- French polishing
- Carving
- Veneering
- Wood Turning
- Porcelain



Unusual Requests Welcome

180 Barwon Terrace, Winchelsea

0428 672 704

All About

## Mowers & Chainsaws

Repairs to all makes and models of ride on mowers, domestic mowers, pumps, chainsaws, brushcutters and small engines.

Trading Hours: Mon - Fri 8am - 5pm Saturday 8am - 12 noon

5267 2266

Cnr Princes Hwy & Lennox St Winchelsea

www.allaboutmowers.com.au

accounts@allaboutmowers.com.au



**SOUTHERN**  
**GRAIN STORAGE**  
PTY. LTD.

AG SUPPLIES FERTILISER GRAIN STORAGE SEED CLEANING

(03) 5267 2351

## Simco Plumbing and Gasfitting

24/7 Emergency service Ph:0400643976

- All General Plumbing and Gasfitting
- Roof and Gutters, Hot Water service changeover
- Split Systems, Air Conditioning and Wood Heaters
- Irrigation, Septic and Treatment plants
- Excavation, Bobcat and Tipper
- Rain water Tank installation
- Renovations and Extensions
- Gas conversions and servicing

Simon McGillivray

Lic:109610. Free quotes, Fast and friendly service

## Winchelsea Men's Shed



For The Community

Men's Shed Kindling/Offcuts  
Bags of Kindling/timber offcuts  
are available for pick up from  
the Men's Shed on Wednesday's  
from 9.30 to 2.30.

If you need a delivery made you  
can call Bill on 0438 083 373.  
The price for a bag of kindling is  
now \$7.00 (up from \$5.00).

Nesting Boxes

Bird or animal nesting boxes are  
available from The Men's Shed.

These can be made to order.

Call in on any Wednesday  
to have a chat.



# Winchelsea Churches



## St John's Catholic Church

Father Joseph Panackal  
0404598558  
Harding St, Winchelsea 3241  
MASS TIMES  
5pm Sat. June 15, 22, 29

## St Thomas' Anglican Church

Rev'd Phil Jacobson  
0477 672 042  
stthomaswac@gmail.com  
Barwon Tce, Winchelsea  
Service 10am

## Winchelsea Uniting Church

0475 777 301  
uca.winchelsea@gmail.com  
Hesse St, Winchelsea 3241  
Services 9.30am Sundays

### Thought for the Week

Whether living alone is adventure or hardship will depend entirely on your attitude and your decisions.

Become friends with yourself.

Learn to appreciate who you are and your unique gifts.

Be patients with yourself and use your sense of humour to keep things in perspective.

**John Bader,**  
Former U/C Accredited  
Lay Preacher

## Let's break down some church language

Phil Jacobson

Last Sunday, we looked at the purpose for a "sabbath," a day off if you like, and linked it to the football discipline of having a recovery period following a hard match.

Many people think that a "day off" is simply something else to fill up with more frantic activity, being hyper-productive, finding extra time to rise and grind. However, the bible's view of a day off is different, and it has nothing to do with feeding our dopamine circuits by bingeing on Netflix, Facebook or TikTok.

The original understanding is that the "sabbath" is really designed to deepen relationships, with God and also with others, and to also help us repair the micro tears and damage which we're subjected to on a daily basis. This damage can take many forms, not merely physical but also emotional, psychological, and spiritual. The "sabbath" invites us to spend time with God and one another, purposely minimising stress and strain, so that we may enter a new week "grounded," and our connections stronger than they were before.

No matter your personal belief, spiritual muscle is built during sabbath.

It's really not that hard to do, and there are no rules about how you do it, and this can be seen in a story about a man with a deformed hand who approached Jesus after being invited to do so. Jesus said to the man, "Stretch out your hand." He stretched it out, and his hand was restored." That's it! No sleight of hand, no bedazzling display of razzamatazz. Just reach out.

On the "sabbath," your own day of rest, God outstretches His arm toward us to connect with us, and we're invited to stretch out our arm toward God in response. The result is healing, strengthening, new life. It also becomes a participatory practice and we become involved in our own healing and reconnection with others simply by reaching, not grasping, not grabbing, simply reaching out.

So, here's a suggestion. Spend some time this week observing your relationship with others and with God. What are your breakdowns and micro-tears and the slow fraying of your connections. Then, on the sabbath day, the rest day that you choose, reach out and stretch toward your loved ones and God. That could mean reading a bit of your bible, attending worship in a church of your choosing, making a phone call to a loved one, going for a walk along the Barwon to chat with God, others, or even yourself. Take part in active recovery, in the "sabbath" that creates healing and new strength.

Imagine how the man with the deformed hand felt when it was no longer deformed, simply by reaching out. He must have been over the moon.

We can learn from football players as they blend their discipline of taking time off with the peculiar pleasure of the rhythm of challenge and rest. We can do the same with the rhythm of active recovery of our spirits, our souls, our relationships, our communities.

Give it a go and try a "sabbath" experience to see where it leads you.

## Applications open for all-abilities sport and recreation program

The State Government is creating more pathways for people with disability to get involved in the sport they love, with a new workforce program making employment opportunities in sport more accessible.

Applications are now open for the new \$13.5 million All Abilities Workforce and Sector Support Program which helps organisations create opportunities for people with disability to get involved in sport by taking on roles as coaches, officials, team managers, administrators and board members across all levels of sport and recreation.

Eligible organisations include state sport and active recreation bodies, regional

sports assemblies, disability organisations, and peak body organisations with experience in promoting change and inclusion in workforce settings.

With more than one million people in Victoria living with disability and only 55 per cent participating in sport and recreation.

The program also aims to encourage inclusive practices and develop training and learning resources - funding of up to \$2.5 million is available to establish a Learning and Development Hub.

For more information on the All Abilities Workforce and Sector Support Program visit [sport.vic.gov.au](http://sport.vic.gov.au).

## International Paramedic College Australia

We are a true local provider of emergency first aid training  
Steve 0407 041 745

### Express CPR First Aid & Childcare First Aid Training in Winchelsea

CPR - HLTAID009 <b>Provide Cardiopulmonary Resuscitation</b> 9:00AM to 10:30AM Tue 11 Jun 2024	\$70.00
First Aid - HLTAID011 <b>First Aid includes CPR</b> 9:00AM to 2:30PM Tue 11 Jun 2024	\$150.00
Childcare First Aid - HLTAID012 <b>Provide First Aid in an education and care setting includes CPR</b> 9:00AM to 2:30PM Tue 11 Jun 2024	\$170.00
CPR - HLTAID009 <b>Provide Cardiopulmonary Resuscitation</b> 9:00AM to 10:30AM Wed 19 Jun 2024	\$70.00
First Aid - HLTAID011 <b>First Aid includes CPR</b> 9:00AM to 2:30PM Wed 19 Jun 2024	\$150.00
Childcare First Aid - HLTAID012 <b>Provide First Aid in an education and care setting includes CPR</b> 9:00AM to 2:30PM Wed 19 Jun 2024	\$170.00
CPR - HLTAID009 <b>Provide Cardiopulmonary Resuscitation</b> 6:00PM to 10:30PM Wed 19 Jun 2024	\$70.00
First Aid - HLTAID011 <b>First Aid includes CPR</b> 6:00PM to 10:30PM Wed 19 Jun 2024	\$150.00
Childcare First Aid - HLTAID012 <b>Provide First Aid in an education and care setting includes CPR</b> 6:00PM to 11:00PM Wed 19 Jun 2024	\$170.00
CPR - HLTAID009 <b>Provide Cardiopulmonary Resuscitation</b> 9:00AM to 11:00AM Wed 3 Jul 2024	\$70.00
First Aid - HLTAID011 <b>First Aid includes CPR</b> 9:00AM to 2:00PM Wed 3 Jul 2024	\$150.00
Childcare First Aid - HLTAID012 <b>Provide First Aid in an education and care setting includes CPR</b> 9:00AM to 2:30PM Wed 3 Jul 2024	\$170.00
CPR - HLTAID009 <b>Provide Cardiopulmonary Resuscitation</b> 9:00AM to 11:00AM Thu 11 Jul 2024	\$70.00
First Aid - HLTAID011 <b>First Aid includes CPR</b> 9:00AM to 2:00PM Thu 11 Jul 2024	\$150.00
Childcare First Aid - HLTAID012 <b>Provide First Aid in an education and care setting includes CPR</b> 9:00AM to 2:30PM Thu 11 Jul 2024	\$170.00
CPR - HLTAID009 <b>Provide Cardiopulmonary Resuscitation</b> 9:00AM to 11:00AM Tue 16 Jul 2024	\$70.00
First Aid - HLTAID011 <b>First Aid includes CPR</b> 9:00AM to 2:00PM Tue 16 Jul 2024	\$150.00

## COVID Report

Data from the Victorian Health Department as at Friday, June 7

Current trends indicate high levels of COVID-19 activity in Victoria.

The number of people in hospital with COVID-19 has increased this week. The 7-day average is 412, compared to 319 last week. The latest quantitative wastewater measures indicate there are high SARS-CoV-2 viral loads in Victorian wastewater in both metropolitan and regional catchments. Increasing levels of SARS-CoV-2 in wastewater suggest increasing prevalence of COVID-19 infections in the community.

Deaths in the most recent 28-day period (24 Apr 2024 -21 May 2024) have increased compared to the prior 28-day period (27 Mar 2024 -23 Apr 2024), with a current 28-day total of 104.

### Stay well this winter

Influenza (the flu) and COVID-19 circulate all year round, but winter is particularly bad for the spread of illness. You can help yourself stay well by:

- getting your flu and COVID-19 vaccination as soon as possible
- keeping 1.5 metre distance between yourself and other people
- washing or sanitising your hands often
- coughing or sneezing into your elbow
- testing for COVID or influenza if you are feeling unwell
- wearing a face mask if you have symptoms
- ensuring there is good ventilation
- staying home if you are sick.

Doing this will help keep you and your friends, family and community well.

## 30-year waterway plan released for a healthy Barwon River

### Corangamite CMA

A Waterway Management Plan has been released for the Barwon River outlining a 30-year strategic direction for the management and protection of the flagship waterway.

Developed by the CMA in partnership with Barwon Water and The Upper Barwon Landcare Network, the Barwon Flagship Waterway Management Plan guides the delivery of the Barwon Flagship project, a large-scale, long-term rehabilitation project which aims to improve riparian and waterway health in the Barwon Catchment, while promoting community involvement.

The Barwon Flagship Waterway project began in July 2021 through Victorian Government investment to improve catchment and waterway health across regional Victoria and the delivery of the Rivers of the Barwon Action Plan.

“The Barwon River is important to both Traditional Owners and local communities. It is a critical drinking water supply catchment for the Geelong region, and it is an important ecosystem for diverse plant and animal species.

The Barwon River flows from the Otways towards Geelong through Winchelsea and joins the Leigh River at Inverleigh and the Moorabool River at Fyansford. Its pathway continues through Geelong and the Connemara Ramsar complex before joining the sea at Barwon Heads. It flows over 160kms through varied landscapes.

The Barwon River was identified in Water for Victoria (2016) as a flagship waterway.





# The Climate Report

Compiled by Judy Cameron

## How is climate change impacting the world's ocean?

### From United Nations Climate Action

The ocean has long taken the brunt of the impacts of human-made global warming, says UN Climate Change. As the planet's greatest carbon sink, the ocean absorbs excess heat and energy released from rising greenhouse gas emissions trapped in the Earth's system. Today, the ocean has absorbed about 90 percent of the heat generated by rising emissions.

As the excessive heat and energy warms the ocean, the change in temperature leads to unparalleled cascading effects, including ice-melting, sea-level rise, marine heatwaves, and ocean acidification.

These changes ultimately cause a lasting impact on marine biodiversity, and the lives and livelihoods of coastal communities and beyond – with nearly half of the world's population (3.3 billion) that depends on fish for protein, and almost 60 million people who work in fisheries and the aquaculture sector worldwide.

### From the Australian Marine Conservation Society

The latest Reef Water Quality Report Card shows alarming levels of pollutants running off into the Great Barrier Reef, with painfully slow progress towards reducing nitrogen and sediment pollution. The report also showed that an alarming 47,519 hectares of vegetation, which is almost twice the area of the Whitsunday Islands, has been cleared along rivers and streams leading to the Reef and that the extent of wetlands is still in decline. This increases erosion along riverbanks and reduces our natural water filters, releasing more sediment and nitrogen into the Reef. If we continue with the current approach, we won't reduce sediment pollution to safe levels until 2047 and not until the next century for nitrogen. Our precious Reef needs action now.

### What is the solution?

To reduce water pollution quickly our governments need to: Continue supporting farmers and graziers to improve their practices and stop pollution at the source.

Close loopholes in our legislation to reduce tree clearing, especially along rivers and streams, which causes water pollution through erosion and worsens climate change.

Restore coastal wetlands to use their superpowers as the Reef's natural water filters.

### Did you know?

Wetlands are natural water filters, trapping sediments and removing nutrients, the two main water pollutants that can damage corals and seagrass, home to dugongs, turtles and inshore dolphins.

They also protect our coasts from extreme weather events, such as cyclones, floods and storms and they store huge amounts of carbon, helping us battle climate change.

By restoring coastal wetlands we can tackle water pollution for a healthier and more resilient Reef.

### From the UNESCO World Heritage Centre

The Great Barrier Reef is a site of remarkable variety and beauty on the north-east coast of Australia.

The diversity of species and habitats, and their interconnectivity,

make the GBR one of the richest and most complex natural ecosystems on earth. There are over 1,500 species of fish, about 400 species of coral, 4,000 species of mollusk, and some 240 species of birds, plus a great diversity of sponges, anemones, marine worms, crustaceans, and other species. No other World Heritage property contains such biodiversity. This diversity, especially the endemic species, means the GBR is of enormous scientific and intrinsic importance, and it also contains a significant number of threatened species....".... if only one coral reef site in the world were to be chosen for the World Heritage List, the Great Barrier Reef is the site to be chosen".

### From CSIRO, Institute for Marine and Antarctic Studies

#### Declining giant kelp forests

95% of the giant kelp forest in Tasmania has been decimated by climate change and the impact of rising sea temperatures. The first-of-its-kind partnership, part of Google's \$1B Digital Future Initiative, will use AI to map otherwise 'invisible' giant kelp and help conduct genomic research to understand what makes some of the kelp heat resistant, aiming to provide critical data to scientists working to restore and grow the forest.

Giant kelp forests are one of the Great Southern Reef's vital ecosystems, providing shelter, food and safe breeding places for a huge variety of marine creatures. This temperate reef straddles five States and is home to fairy penguins, leafy sea dragons, blue groper, handfish and other iconic species - and for many, it's their only home.

---

## Climate Emergency Grants enabling local action

### Surf Coast Shire

Two successful projects were announced last week as part of Surf Coast Shire Council's World Environment Day: Pitch Fest celebrations.

Representatives from each group shared how their initiative will address climate change locally, contributing to a thriving community and environment. As Climate Emergency Grants, each recipient received \$10,000.

Mayor Liz Pattison announced the following recipients:

- \$10,000 for Common Ground Project and Lorne P-12 College for 'School for Climate: Regeneration and Climate Action in the Garden & Farm'.
- \$10,000 for The Brainery and Geelong Regional Library Corporation for Arkit Sustainability Studio.

"The World Environment Day: Pitch Fest Celebration is an inspiring event and it is wonderful to be part of a community that is passionate about climate action, it fills me with hope for the future", said Mayor Cr Liz Pattison.

*direct*  
**TEMPORARY FENCING**

FOR HIRE - SUPPLIED & ERECTED - 7 DAYS  
GEELONG - BELLARINE - COLAC - SURF COAST  
PHONE CAM 0417 310 800

**DownRyte Excavations**

- Excavations
- Drilling and Piling
- Rock Placement
- Tree and Stump Removal

*Sean Hunwick*  
Mobile: 0409 447 288  
Email: downryte@activ8.net.au

**NO MATTER WHAT  
YOUR PROBLEM, DODDS  
ELECTRIX CAN DEFUSE  
THE SITUATION.**

RURAL, INDUSTRIAL, COMMERCIAL DOMESTIC  
PHONE 0438 887 360  
EMAIL: DODDSY@FASTMAIL.FM  
PO BOX 36 BIRREGURRA, VICTORIA 324  
REC. 17520 ABN: 64 581 250 880

**WINCHELSEA CONCRETING**

• Driveways • Sheds • Decorative Concrete • Raft Slabs

**Robert Murphy**  
☎ 0438 235 237  
✉ winchelseaconcreting@outlook.com

**Knuckey's Winchelsea  
Ph: 5267 2011**

Knuckey's have in stock a complete range of batteries to suit tractor, heavy machinery, cars, utes

The largest range of the best oil for your vehicles—**CASTROL**—  
*'when only the best will do'*

The largest range of V belts.  
A, B, C, D M Sections  
Bolts and nuts for all occasions  
Steel cut to size

**Scott McDonald**  
0423 413 829

**S.J.R AUTOMOTIVE**  
ABN 942 493 646 39  
13 ALSOP DRIVE, WINCHELSEA VIC 3841

**DAVIC AG**

**CONTRACTING AND EARTHMOVING**

For all your harvesting needs  
Mowing, raking, round bailing, paddock prepping, spreading and sowing

Call Dave on **0417 579 973** Bambra

**OZ TREES NURSERY  
& TREE PLANTING SERVICES**

- Affordable seedlings—over 200 species
- Complete plantation service—farm forestry, shelter, aesthetics
- Deep ripping & mound ploughing. Rotary bed forming
- Our experienced staff will help you select species for your site conditions and needs

Also available—tree planting tools, milk cartons, plastic tree guards & bamboo stakes

569 Warrowie Rd. Colac  
P: 5233 6280 F: 5233 6393  
E: info@oztrees.com.au  
W: www.oztrees.com.au  
Open Monday—Friday  
9am—4:30pm

**Phone OzTrees for professional advice,**

WINCH WEBSITES  
WEB SOLUTIONS SIMPLIFIED.

**WEBSITES**

GROW business  
INCREASE reach  
SAVE time

Find out what a website could do for you  
winchwebsites.com.au  
04 887766 20

**STS ACCOUNTING GROUP**

**Your Taxation  
&  
Superannuation  
Specialists.**

Winchelsea  
**5267 2673**  
www.surftax.com.au



# The skills you already have, can help you make a positive impact as a Prison Officer

Apply now for a rewarding and secure career as a Prison Officer, and receive job benefits like paid training and paid overtime.



**Corrections  
Victoria**

**Hiring now**



Authorised by the Victorian Government, 1 Treasury Place, Melbourne



- Domestic and Commercial hire equipment • Industrial welding gas
- Digging and Earthmoving equipment • New trailers and trailer repairs
- Firewood • Stockists of Royal Oil Lubricants products
- LPG for domestic and commercial requirements

Give Chris and the Team a call on **5232 1177** or email [info@colachire.com.au](mailto:info@colachire.com.au)

[www.colachire.com.au](http://www.colachire.com.au)

101 Wallace St Colac 3250



**Green Lead Electrical**  
Connecting you to a greener future  
REC 23618

0467 097 101



**Servicing Geelong & the Surf Coast**

**Specialising in all residential electrical work including:**

- Switch board & lighting upgrades
- Outdoor lighting
- Electrical safety checks
- Energy efficient LED lighting
- Ceiling sweep fans & ventilation
- Energy saving advice

**Phone Martin Wilkinson:**  
**0467 097 101**  
[greenlead@outlook.com](mailto:greenlead@outlook.com)

1192268-CG18-14



**Water Supply Specialists**

WATER SOLUTIONS

74 Dennis Street, Colac  
5231 1861

ALL THINGS WATER:

- PUMPS • PIPES
- FITTINGS • TANKS
- POOL CHEMICALS
- IRRIGATION
- WATER PURIFICATION
- SOLAR • REPAIR

**Funeral Planning**  
*Working out what is best for you.*

Prepaid Funerals, Funeral Bonds, Pay-by instalments...

There are many options and its important to make the right choice.

Alyson Burchell will be available by appointment to answer any questions about funerals and planning ahead.



For more information or to make an appointment contact Sue on 5221 4788

Tuckers Community Office,  
Surf Coast Taxation Services, 22 Willis Street,  
Winchelsea

**First Tuesday of the Month,  
by appointment 10.00am - 12.00pm**

Caring for families since 1883

**Tuckers**  
Funeral & Bereavement Service  
...for a life worth celebrating

5221 4788  
[www.tuckers.com.au](http://www.tuckers.com.au)



**AlfordBuilt**

New Homes, Renovations, Extensions,  
Bathrooms, Decks & Pergolas

0408 583 362  
[stephen@alfordbuilt.com.au](mailto:stephen@alfordbuilt.com.au)



**REGISTERED**  
Building Practitioner

**Lupton BUILDERS**



SPECIALISING IN QUALITY




REGISTERED Building Practitioner

- NEW HOMES
- ALTERATIONS
- GARPORTS
- BATHROOMS
- EXTENSIONS
- DECKS
- VERANDAHS
- WINDOW REPLACEMENTS
- RENOVATIONS
- PERGOLAS
- RE-GLADS

LEIGH LUPTON  
0438 840 104

CHRIS LUPTON  
0407 681 514

[LEIGHLUPTON17@GMAIL.COM](mailto:LEIGHLUPTON17@GMAIL.COM) Est. 1977

**JGW** JACK'S GARDENING WINCHELSEA

**SERVICES**

- SMALL & MEDIUM YARD LAWN MOWING
- EDGING
- WHIPPER SNIPPING
- PRUNING
- CLEAN UPS
- WEED SPRAYING
- MULCHING
- ODD JOBS



**CONTACT**

**JACKSON HUNT**

Phone: 0451-993-791  
Price: \$60 per hour





# R.A.K. DAVIS & SONS

## CARTAGE CONTRACTORS

WINCHELSEA

SUPPLIER OF ALL QUARRY MATERIALS, TRUCK HIRE

CARTAGE OF GRAIN, LIME, GYPSUM & SUPER

LANDSCAPE & GARDEN SUPPLIES

56 WILLIS ST, WINCHELSEA

Ph – 5267 2094

Ryan – 0438 672 281

Email: rakdavis@bigpond.com



17 Alsop Drive

- ❖ LOG BOOK SERVICE
- ❖ AUTO ELECTRICAL
- ❖ TOWING
- ❖ AIR CONDITIONING
- ❖ CLUTCH & BRAKES
- ❖ TYRES
- ❖ WHEEL ALIGNMENT
- ❖ BATTERIES

### CAR, TRUCK REPAIRS & Roadworthys

PH: 5267 3001

Mob: 0417 137 457

HESSE  
RURAL  
HEALTH



### Volunteers Required

Volunteers are one of Hesse's greatest assets, playing a vital role to enhance the quality of Hesse services & client experiences.

- Bus Driver
- Outings Assistant
- Resident Visitor
- Events & Activities Assistant
- Group Wheelchair Walkers
- Appointment Escort
- Social Support Activities
- Gardening - Winchelsea
- Hospital Auxiliary Member
- Consumer Advisory Committee
- Marketing & Fundraising Committee

For more information please contact Hesse on (03) 5267 1200 or via email reception@hesse.vic.gov.au

**GREAT Bundle Deal on Bosch Hot Water...** FROM ELGAS

Buy any Bosch Bluetooth continuous flow hot water model - 16Litre, 20Litre or 26Litre and Receive \$100\* in Elgas bonus LPG gas credits



From \$780 or \$32.50 per month

\*For more details: www.elgas.com.au/appliances/bosch-cp1flow-16-20-26-lpg-bundle-sale

AND... for new customers, an additional \$80 WORTH OF LPG GAS CREDITS\*\* when you open a new LPG Gas account with Elgas



\*\*Further details can be viewed at www.elgas.com.au

Ask about the Elgas Easy Payment Plan - 12 months interest free\*\*\* on selected LPG appliances

\*\*\*Further details can be viewed at: www.elgas.com.au/epp

Automatic tanker gas bottle refill OR gas bottle exchange refill is available for home or business...

Call today or visit our website for our many customer benefits and latest offers

131 161  
www.elgas.com.au

ELGAS



### SIMPLE STORAGE SOLUTIONS

- Personal & Business Storage
- Boat, Caravan & Vehicle Storage
- High Security Premises
- Individually Alarmed Units
- Electric Gate Access
- 7 Day Access & CCTV

### YOUR STORAGE PROBLEMS SOLVED

5267 3116

6 ALSOP DRIVE, WINCHELSEA 3241

### Wightons Lawyers

- Dispute Resolution & Litigation
- Debt Collection
- Property Law
- Wills & Estates
- Powers of Attorney
- Business Law
- Family Law

By appointment only

22 Willis Street, Winchelsea  
ph. 5221 8777

www.wightons.com.au





**WINCHELSEA LIONS CLUB**  
 ARE SELLING ENVIRONMENTALLY FRIENDLY SHREDDED PAPER COMPRESSED BRICKS FOR YOUR FIRE  
 SAVE ON THE RISING COST OF WOOD BY INCLUDING PAPER BRICKS AS WELL

PACKET OF 4 ROARS (BRICKS) \$5  
 ROLL OF PURRS (SMALL ROLLS) \$2

AVAILABLE AT LIONS PAPER SHED  
 36 HARDING STREET  
 SATURDAY MORNINGS  
 10AM - 12 NOON  
 FROM 4<sup>TH</sup> MAY UNTIL SOLD OUT

EFTPOS AVAILABLE  
 CASH ACCEPTED




CHARLES STEWART  
 rma network. Accredited Member

*Charles Stewart & Company are leading livestock and real estate service providers covering Victoria's south west*

	<b>LIVESTOCK</b>
Jamie McConachy	0418 522879
Peter McConachy	0408 522878
Matt Nelson	0428 315400
Gerard Bohan	0400 005541
Lachie Barclay	0438 346291
John Thornton	0408 526367
Dougal McIntyre	0439 575612
Ross Spitty	0419 539717

	<b>REAL ESTATE</b>
Michael Stewart	0418 520467
Daryl Osborne	0419 388341
Anthony McDonald	0418 593597
Gerard Bohan	0400 005541
Stephen Lugg	0417 556098
Josh Lamanna	0417 586032

Office  
 56 Bromfield Street, Colac  
 www.charlesstewart.com.au




**HF RICHARDSON**  
 PROPERTY


Servicing all your real estate needs  
 Ken McDonald **0418 524 150**



Residential | Rural Lifestyle | Agricultural Farms



**Moriac Veterinary Clinic**  
**0447 781 089**  
 PHONE 24 HOURS  
 784 Hendy Main Road Moriac  
 info@moriacvet.com  
 www.moriacvetclinic.com.au  
 HOURS // Monday - Friday: 8am - 5pm



**Casuarina Counselling Therapy**  
*Slow, Connect, Breathe, Grow*

Counselling and holistic integrated therapy to help find clarity, understanding and new ways to live a healthy and joyful life.


Help with:

- Anxiety • Depression • Grief • Addiction • Low self esteem
- Disordered eating • Emotional concerns • Relationship issues

Costs are \$80 concession and \$120 full

Now available on Tuesdays at The Exchange, 38 Main Rd, Winchelsea (next to the Winchelsea Medical Centre).  
 Contact Mel on **0493988150** for more information or to book an appointment.

**MGT BUILDING & CONSTRUCTION**

NEW HOMES | EXTENSIONS | RENOVATIONS **Ph: 0409 433 687**  REGISTERED Building Practitioner

Chiropractic - Remedial Massage - Myotherapy - Sound Healing - Breathwork

**Chiropractic care for:**

Stress & Anxiety	Pain Management
Body Aches & Tension	Family Wellbeing
Poor Sleep	Health Longevity

03 5267 2240 Shop 4/21 Hesse St Winchelsea   <https://onebodychiropractic.com.au/>









# mental health & wellbeing local

Free support in your community

# Help is here



Free support with no referral needed



An easy way to access mental health and wellbeing support



Local mental health support close to home



Support options made to suit you and your needs

**Mental health and wellbeing support that's within reach – walk in, call us or we can come to you**

Not sure where to access support for your mental health and wellbeing journey – or looking for options that suit you better? Help is here. Mental Health and Wellbeing Locals are a free mental health and wellbeing service, providing peer support, wellbeing supports, treatment and therapies for people aged 26 and over. It's free and easy to access, with no Medicare card or referral required. Access the support you're looking for closer to home or discover ways to support someone you care about.

## Find local support

[betterhealth.vic.gov.au/mhwlocal](https://betterhealth.vic.gov.au/mhwlocal)



Authorised by the Victorian Government, 1 Treasury Place, Melbourne





**Located at 36 Main Street, Winchelsea 3241**

For any enquires or bookings please contact the clinic on 5292 8028.  
Or visit our website: [www.winchmc.com.au](http://www.winchmc.com.au)

Opening Hours:

Monday - Friday 8:00am - 5.00pm  
(Monday Evening Clinics available and selected Saturdays)



Our clinic accepts online bookings via the app called HotDoc.  
Download the app on the App Store or Google Play or head to our website.

# NATURAL GAS CONNECTIONS

## M. & L DRAYTON PLUMBING SERVICES

**YOUR LOCAL LICENSED**

- PLUMBERS (24356)
- GAS FITTERS
- GAS CONVERTERS
- CARBON MONOXIDE TESTING

## MARK 0428 520 142



Winchelsea and District

## Ebony knows banking

If you need help with yours, you need to meet Ebony.

Ebony shares her knowledge of banking so you can achieve what you want from life.

And, she can meet you when and where it suits you; at the branch, over the phone, or via video call.

**If you need help with your banking, call Ebony Berg, Loan Specialist on 5267 3189 or search Bendigo Bank Winchelsea.**

[bendigobank.com.au](http://bendigobank.com.au)



Bendigo and Adelaide Bank Limited ABN 11 068 049 178, AFSL/Australian Credit Licence 237879. A1415950 OUT\_33710515

## Winchelsea Men's Shed



**For The Community**

**51 Hesse Street**

**Every Wednesday from 9:30am**

**New members always welcome**

**For more detail contact:  
Ray Atkinson (Co-ordinator)  
0407 839 139**

**or  
[winchmensed@gmail.com](mailto:winchmensed@gmail.com)**

**Need a job done?  
Woodworking jobs,  
furniture repairs, small jobs.  
Drop in and talk to us.**

## HESSE RURAL HEALTH



- Acute Care\*
- Urgent Care\*
- Residential Aged Care\*
- Community Nursing
- Dietetics
- Physiotherapy
- Occupational Therapy

- Diabetes Education
- Social Support Groups
- Counselling
- Home Care
- Health Promotion
- \* services from Winchelsea only

[www.hesseruralhealth.com.au](http://www.hesseruralhealth.com.au)  
P: (03) 5267 1200 E: [reception@hesse.vic.gov.au](mailto:reception@hesse.vic.gov.au)





# Blues News

Janet Fletcher

Welcome to Blue's News where the King's Birthday weekend saw a bye for all Geelong & District Football & Netball League teams half way through season 2024.

Still plenty happening around the Club with Junior Football last Friday night where the Winchelsea Blues Under 10 side hosted the North Geelong Magpies under lights at Eastern Reserve. The Under 10's did very well up against a big, experienced opposition, and while they didn't come away with a win, Coach, Team Manager and parents can be very proud of their efforts last Friday night. Great effort Under 10's.

### 150th Game Milestone:

This week the Blues host Geelong West Giants in a home game that will celebrate the 150th Senior game for No. 33 Michael Bourdouvalis. Bav has played all his Junior football at the Winchelsea Football Club and has been running around the back line for the Senior Blues doing his bit for his team and his club. Congratulations Michael – enjoy your day!

### THE BLUES BISTRO:

This week we have Seafood Baskets, Chicken schnitzel / parmi, and Spaghetti Bolognese on the Menu. Chicken Nuggets and chips - \$5 for Junior Blues, \$2 for ice cream and topping/sprinkles. Meal Service at 6pm.

**GO BLUES!!**



## Winchelsea Lions Club

Linda Carter

Winchelsea Lions Club doing their monthly stint at Torquay Bunnings. All proceeds \$1350 were donated to Fight MND.



Thank you everyone.



VICTORIA POLICE

**IF YOU'VE HAD YOUR  OR  STOLEN, BUT DON'T HAVE THE  TO VISIT YOUR LOCAL  STATION...**



 report online

**ANYTIME**

**WHEN YOU NEED US,  
BUT NOT THE SIRENS**



**LEARN MORE**



Authorised by the Victorian Government, 1 Treasury Place, Melbourne



## Winchelsea Taxis is now Surfcoast Taxis

Our fleet of vehicles are growing to all late models and we are covering an extended area including Winchelsea, Colac, Bannockburn, Inverleigh, Great Ocean Road and Geelong.

We have a fleet of 10 seater Maxi Vans, all with capacity to carry wheelchairs.

**Surfcoast Taxis Pty Ltd**  
**All Bookings: 0408 325 992**  
**Fax: 5267 2699**  
**Email: bannotaxis@gmail.com**  
 (Admin or Stan 0429 672 888)  
 66A Batson Street  
 Winchelsea 3241



Accounts NDIS provider. TAC, DVA etc

NDIS provider number 4050001044  
 NDIS provider number 4050001048

Book your next ride with  
**smartHAIL**

Book Track Pay Rate

Download on the App Store GET IT ON Google Play

# Winchelsea Star

ISSN 2202-6851



Since 1977

9177220216850021

## WINCHELSEA LIONS CLUB

### PAPER RECYCLING

Paper depot rear of Senior Citizens Rooms  
 Harding Street  
**NEWSPAPERS, MAGAZINES, PHONE BOOKS WANTED**



RAISING FUNDS FOR OUR TOWN & DISTRICT  
 5267 2011 or 0408 520 606

## M&B WOOD PLUMBING

Call Matt - 0418 319 357  
[mbwoodplumbing.au](http://mbwoodplumbing.au)

### Servicing Winchelsea & surrounds

- General maintenance & blocked drains
- Gas fitting & hot water service upgrades
- New homes & renovations

## DEFIBRILLATORS IN WINCHELSEA

Accessible to the public 24 hours a day

The Winchelsea Lions Club has compiled a list of public access defibrillators in Winchelsea. We are lucky to have more available in town, but these are specifically **publicly accessible 24 hours a day**. If anyone knows any others that have 24 hour public access, please let Linda Carter know on 0439 817 263.



Bendigo Bank  
11 Main Street



Ambulance Victoria  
33 Willis Street



Uniting Church  
33 Hesse Street



Senior Citizens  
36 Harding Street



Men's Shed  
51 Hesse Street



Winchelsea Golf Club  
13 Anderson Street



Hesse Rural Health  
8 Gosney Street



Wurdale Memorial Hall  
220 Wurdale Road

