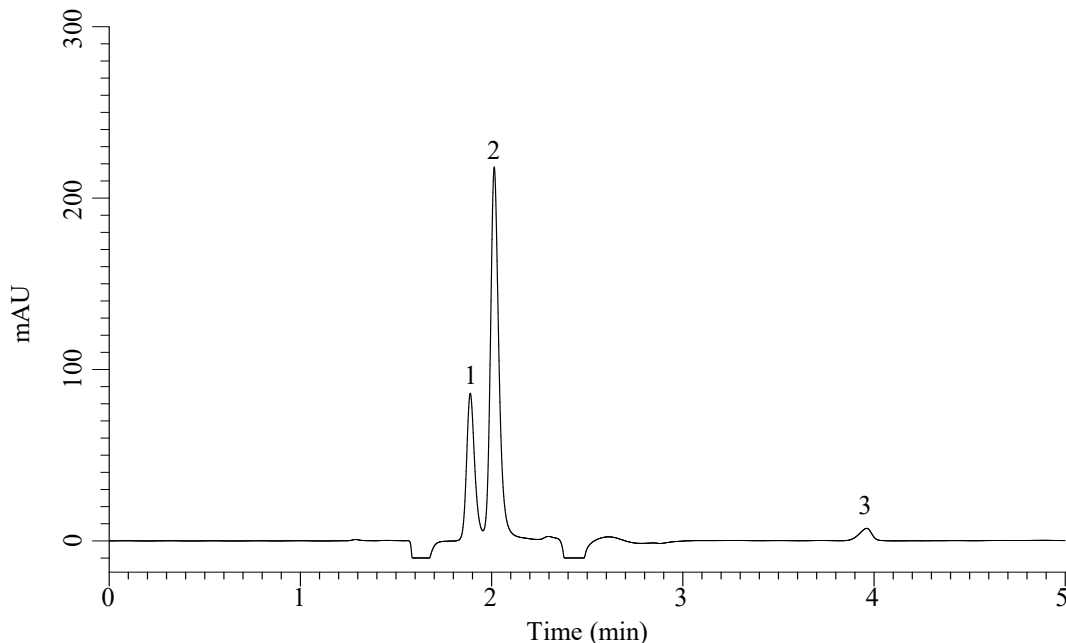


InertSearch for LC

Inertsil Applications

Analysis of L-Cystine and L-Cysteine and L-Cysteic acid

Data No. LB729-0806



Conditions

System : Chromaster HPLC system (HITACHI)
Column : InertSustain AX-C18 (GL Sciences Inc.)
(3 μ m, 150 x 2.1 mm I.D.)
Column Cat. No. : 5020-91039
Eluent : (10 mM HCOONH₄ + 0.1% HCOOH) in H₂O
Flow Rate : 0.2 mL/min
Col. Temp. : 40 °C
Detection : UV 210 nm
Injection Vol. : 2.5 μ L
Sample : Standard

Analyte:

1. L-Cystine
2. L-Cysteine
3. L-Cysteic acid
(200 mg/L each)