

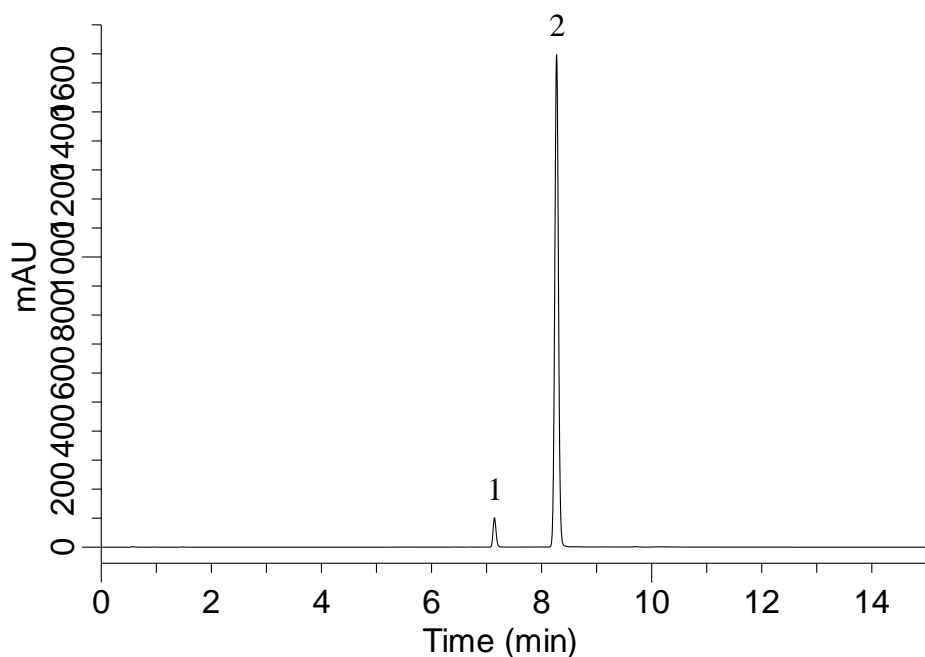
# InertSearch for LC

Inertsil Applications

## Analysis of Telmisartan and Amlodipine besilate

(Under the Condition of the draft for the Japanese Pharmacopoeia,  
Telmisartan and Amlodipine Besilate Tablets)

Data No. LB632-0952



### Conditions

**System** : GL7700 HPLC system  
**Column** : Inertsil C8-3  
(5  $\mu$  m, 75 x 3.0 mm I.D.)  
**Column Cat. No.** : 5020-04923  
**Eluent** : A) CH<sub>3</sub>CN  
B) 2 g/L NH<sub>4</sub>H<sub>2</sub>PO<sub>4</sub> in H<sub>2</sub>O (pH 3.5, H<sub>3</sub>PO<sub>4</sub>)

Time (min)	A (vol%)	B (vol%)
0.0	10	90
2.0	10	90
7.0	80	20
8.0	80	20

**Flow Rate** : 0.8 mL/min  
**Col. Temp.** : 40 °C  
**Detection** : UV 237 nm (UV7750 UV Detector)  
**Injection Vol.** : 5  $\mu$  L  
**Sample** : Standard

### Analyte:

1. Amlodipine besilate 28 mg/L  
2. Telmisartan 320 mg/L

Resolution (1,2) : 10.1 ( $\geq 5$ )  
RSD of the peak area of 1 (%) (n=6)  
: 0.25 ( $\leq 1.0$ )