



# OCTOBER LABOR MARKET REVIEW

## Table of Contents:

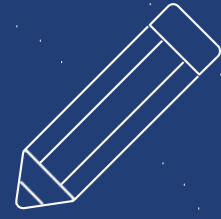
Page 2 - Board of Directors

Page 4 - Highlights of the Labor Force

Page 5 - Unemployment Claimants

Page 7 - Employment by Sectors

Page 18 - W.E. at Work



## BOARD OF DIRECTORS

WORKFORCE  
BORDERPLEX

SOLUTIONS

### BOARD CHAIR

**Frank Spencer III**, *Private Sector*

### VICE CHAIR

**Bobby Blanco**, *Private Sector*

**Dr. Armando Aguirre**, *Public Education*

**Robert Alcala**, *Vocational Rehabilitation*

**Satish Bhaskar**, *Public Assistance*

**Joseph Biernacki**, *Private Sector*

**Ruben Chavez**, *Private Sector*

**Chrystal Davis**, *Community-  
Based Organization*

**Dan Dunlap**, *Private Sector*

**Ernestina Fautleroy**, *Private Sector*

**Eduardo Garcia**, *Economic  
Development*

**Art Garza**, *Private Sector*

**Bob Gear**, *Public Employment*

**Christina Gonzalez**, *Private Sector*

**Leonard Goodman III**, *Private  
Sector*

**Randall Kinzie**, *Private Sector*

**Ruby Maldonado**, *Private Sector*

**Mary Jo Ochoa-Hernandez**,  
*Literacy Council*

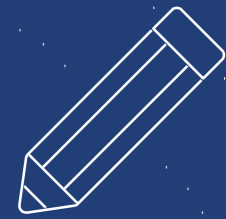
**Adam Pacheco**, *Community-  
Based Organization*

**Emma Schwartz**, *Private Sector*

**Mica Short**, *Community-Based*

*Organization* **Ruben Torres**, *Private Sector*

**Adam Valdez**, *Organized Labor*



**BOARD OF DIRECTORS  
WORKFORCE SOLUTIONS  
BORDERPLEX**



*To our members,*

We are pleased to present the Labor Market Review that examines how the workforce area performed during October 2023. We are incorporating unemployment insurance claimant data to provide perspective on the ongoing pandemic effect.

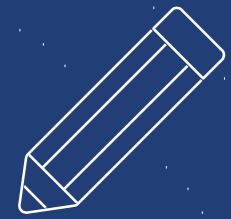
The information presented in this newsletter was gathered from federal and state sources and pertains to the El Paso MSA, the Workforce Solutions Borderplex region, and the City of El Paso.

We look forward to performing to your highest standards in communicating pertinent information regarding the workforce as it relates to our objectives at WSB.

If there is additional information that you would like to see presented here, please send your comments and suggestions to:

[bianca.cervantes@borderplexjobs.com](mailto:bianca.cervantes@borderplexjobs.com)





# HIGHLIGHTS OF THE LABOR FORCE OCTOBER 2023 WORKFORCE SOLUTIONS BORDERPLEX



## THE BORDERPLEX REGION

- THE LABOR FORCE INCREASED BY **2,132** FROM THE PREVIOUS MONTH
- THE NUMBER OF EMPLOYED INDIVIDUALS INCREASED BY **3,164** FROM THE PREVIOUS MONTH
- THE NUMBER OF UNEMPLOYED INDIVIDUALS DECREASED BY **1,032** FROM THE PREVIOUS MONTH

## EL PASO, TX MSA

- EL PASO, TX MSA UNEMPLOYMENT WAS AT **4.4%** WITH A TOTAL OF **16,664** UNEMPLOYED INDIVIDUALS
- EL PASO, TX MSA ADDED **3,500** NONFARM JOBS SINCE OCTOBER 2022
- EL PASO, TX MSA ADDED **4,100** NONFARM JOBS FROM THE PREVIOUS MONTH

## RURAL COUNTIES (BREWSTER, CULBERSON, JEFF DAVIS, HUDSPETH, AND PRESIDIO COUNTIES)

- THE LABOR FORCE DECREASED BY **50** FROM THE PREVIOUS MONTH
- THE NUMBER OF EMPLOYED INDIVIDUALS INCREASED BY **3** FROM THE PREVIOUS MONTH
- THE NUMBER OF UNEMPLOYED INDIVIDUALS DECREASED BY **53** FROM THE PREVIOUS MONTH

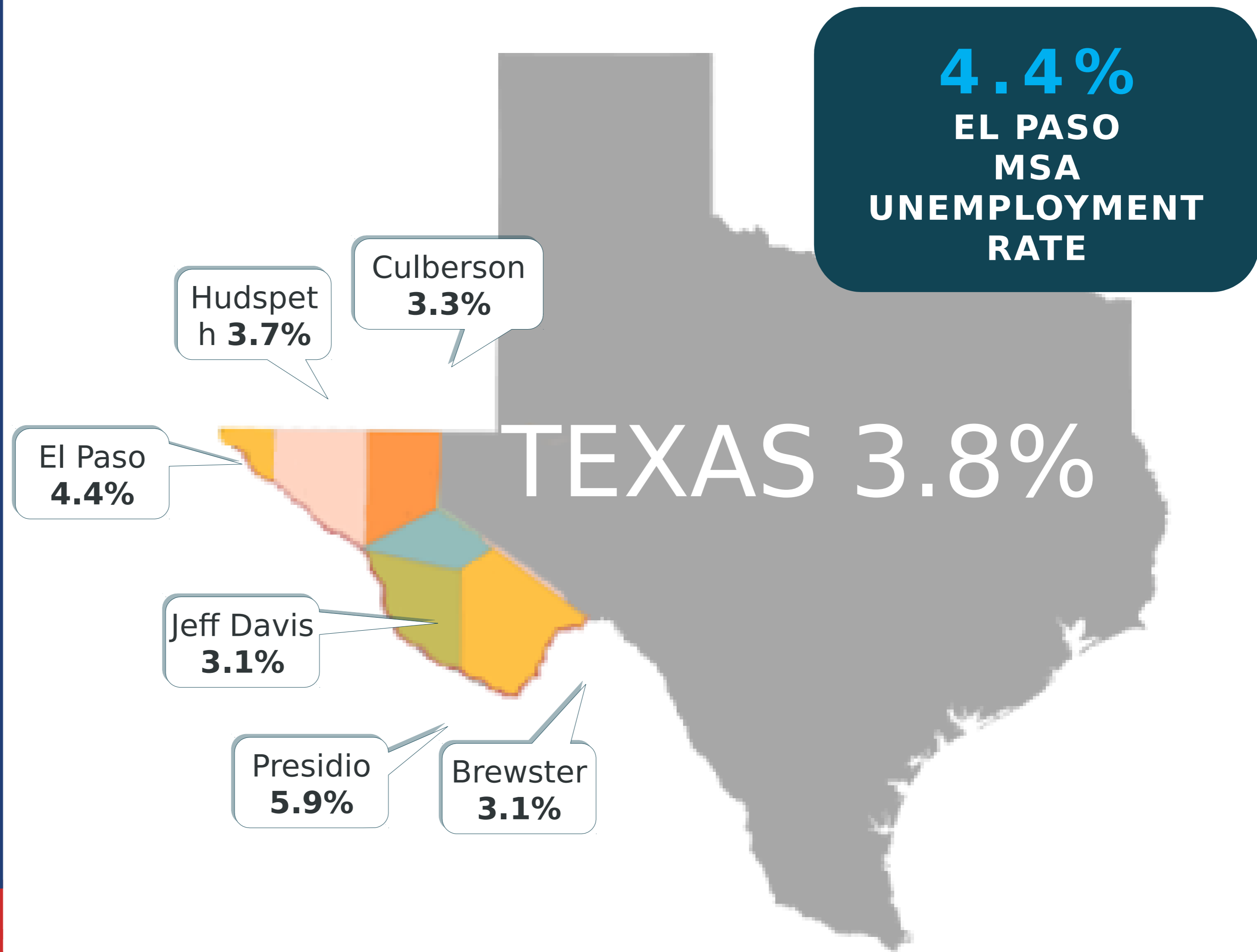
# NOTEWORTHY IN OCTOBER 2023

*Non-Seasonally Adjusted*

## WORKFORCE SOLUTIONS BORDERPLEX

		October 2023				September 2023				October 2022			
		Labor Force	Employment	Unemployment	Rate	Labor Force	Employment	Unemployment	Rate	Labor Force	Employment	Unemployment	Rate
Texas	State	15,183,880	14,605,351	578,529	3.8	15,178,113	14,558,101	620,012	4.1	14,731,841	14,189,171	542,670	3.7
El Paso	MSA	379,660	363,016	16,644	4.4	377,501	359,875	17,626	4.7	373,256	357,833	15,423	4.1
Borderplex	WDA	389,283	372,257	17,026	4.4	387,151	369,093	18,058	4.7	382,634	366,826	15,808	4.1
Brewster	County	4,379	4,245	134	3.1	4,383	4,232	151	3.4	4,262	4,127	135	3.2
Culberson	County	1,261	1,220	41	3.3	1,280	1,236	44	3.4	1,151	1,122	29	2.5
El Paso	County	377,793	361,218	16,575	4.4	375,611	358,057	17,554	4.7	371,420	356,075	15,345	4.1
Hudspeth	County	1,867	1,798	69	3.7	1,890	1,818	72	3.8	1,836	1,758	78	4.2
Jeff Davis	County	969	939	30	3.1	981	945	36	3.7	970	933	37	3.8
Presidio	County	3,014	2,837	177	5.9	3,006	2,805	201	6.7	2,995	2,811	184	6.1
El Paso	City	314,578	301,405	13,173	4.2	312,716	298,768	13,948	4.5	309,389	297,114	12,275	4.0
Socorro	City	15,770	15,001	769	4.9	15,667	14,869	798	5.1	15,457	14,787	670	4.3

# NOTEWORTHY IN OCTOBER 2023



The three Super Sectors with the greatest employment for the El Paso MSA in October 2023 were:

1. Trade, Transportation, and Utilities
2. Government
3. Private Education and Health Services

These three Super Sectors represented **58%** of the total nonfarm employment.

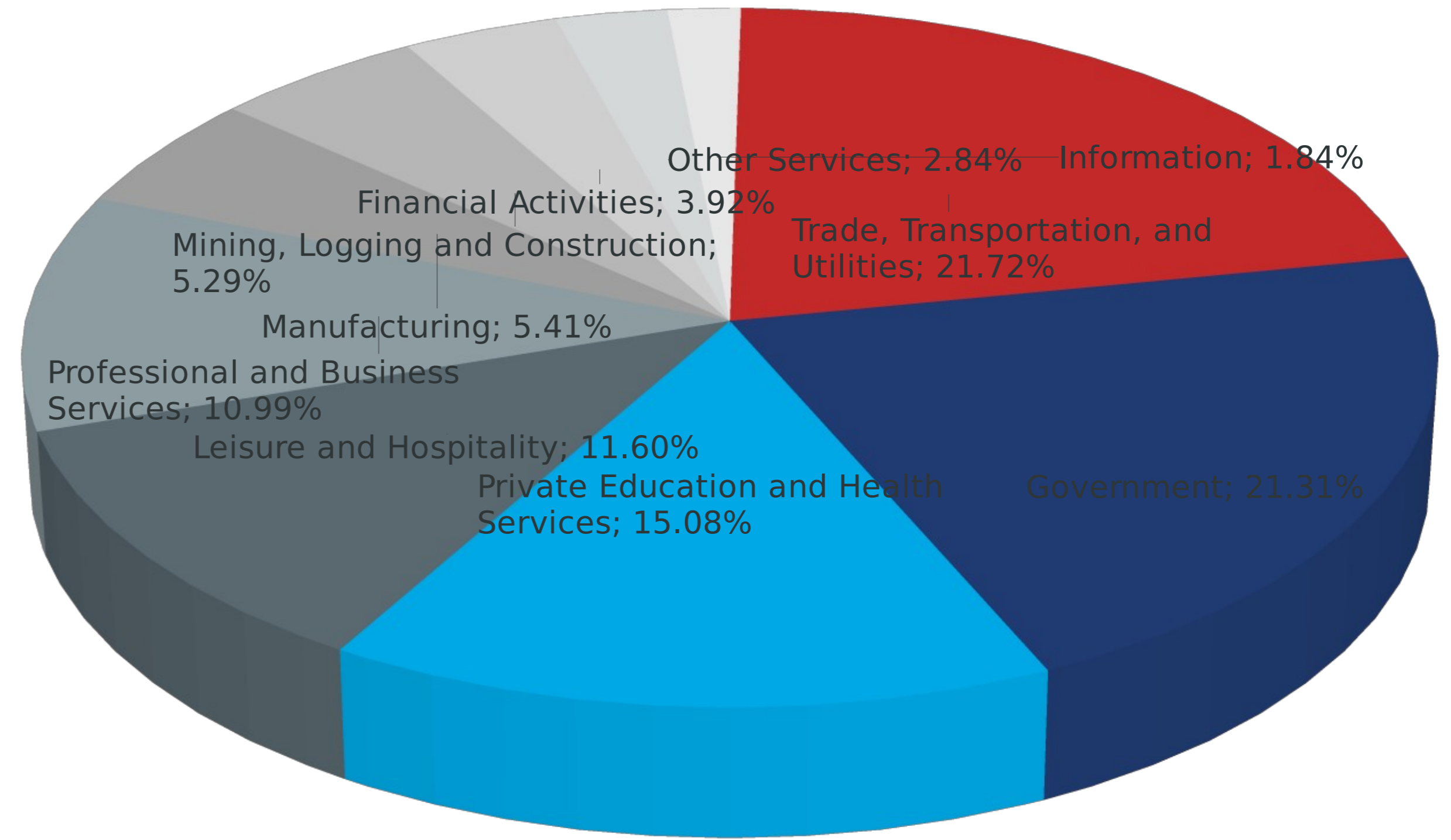
The three Super Sectors with the least employment for the El Paso MSA in October 2023 were:

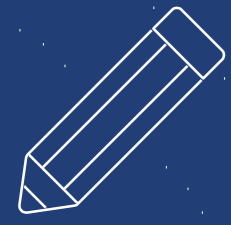
1. Financial Activities
2. Other Services
3. Information

These three Super Sectors represented **9%** of the total nonfarm employment.

## WHERE DO WE WORK?

WORKFORCE SOLUTIONS  
BORDERPLEX

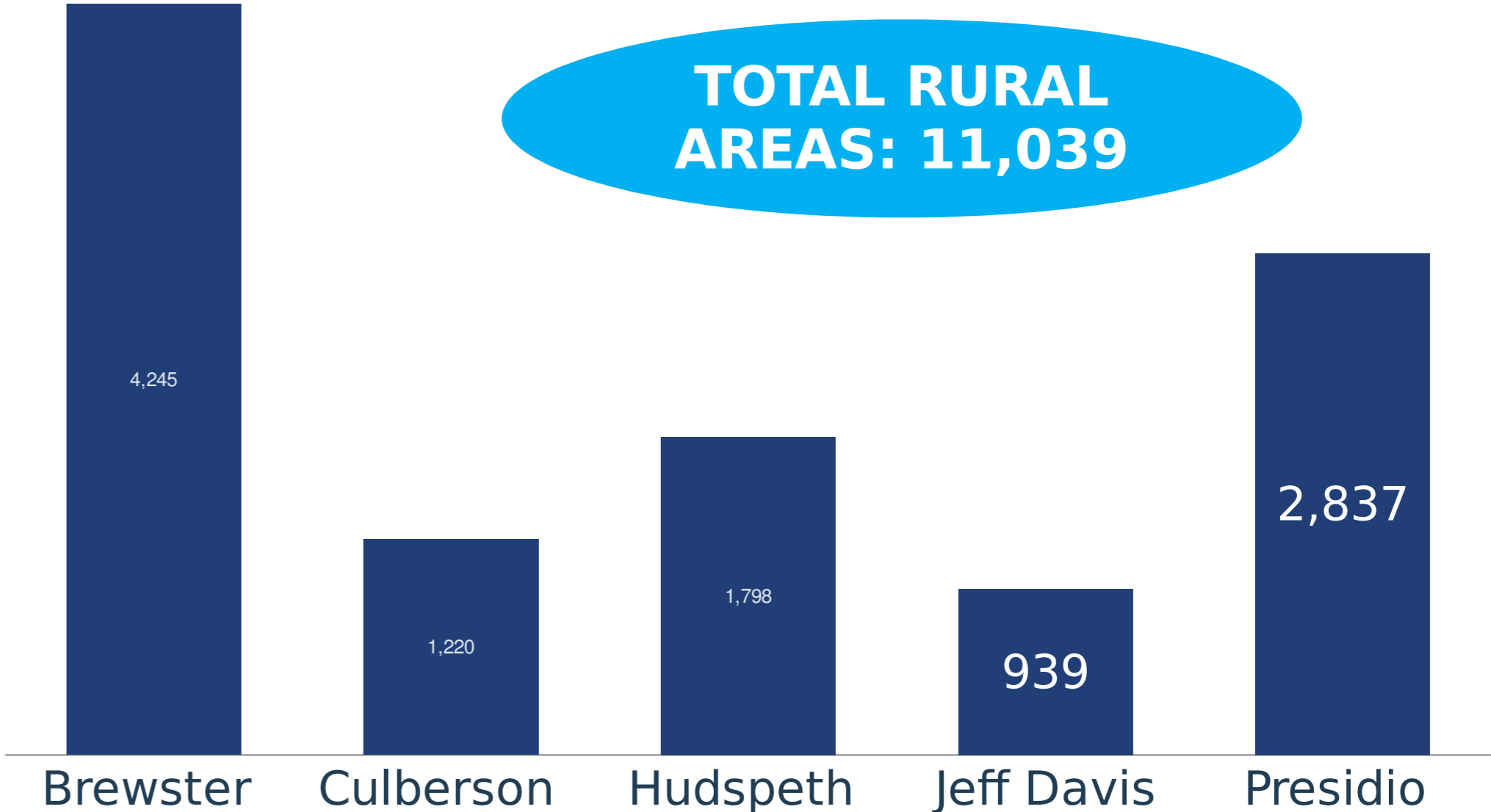
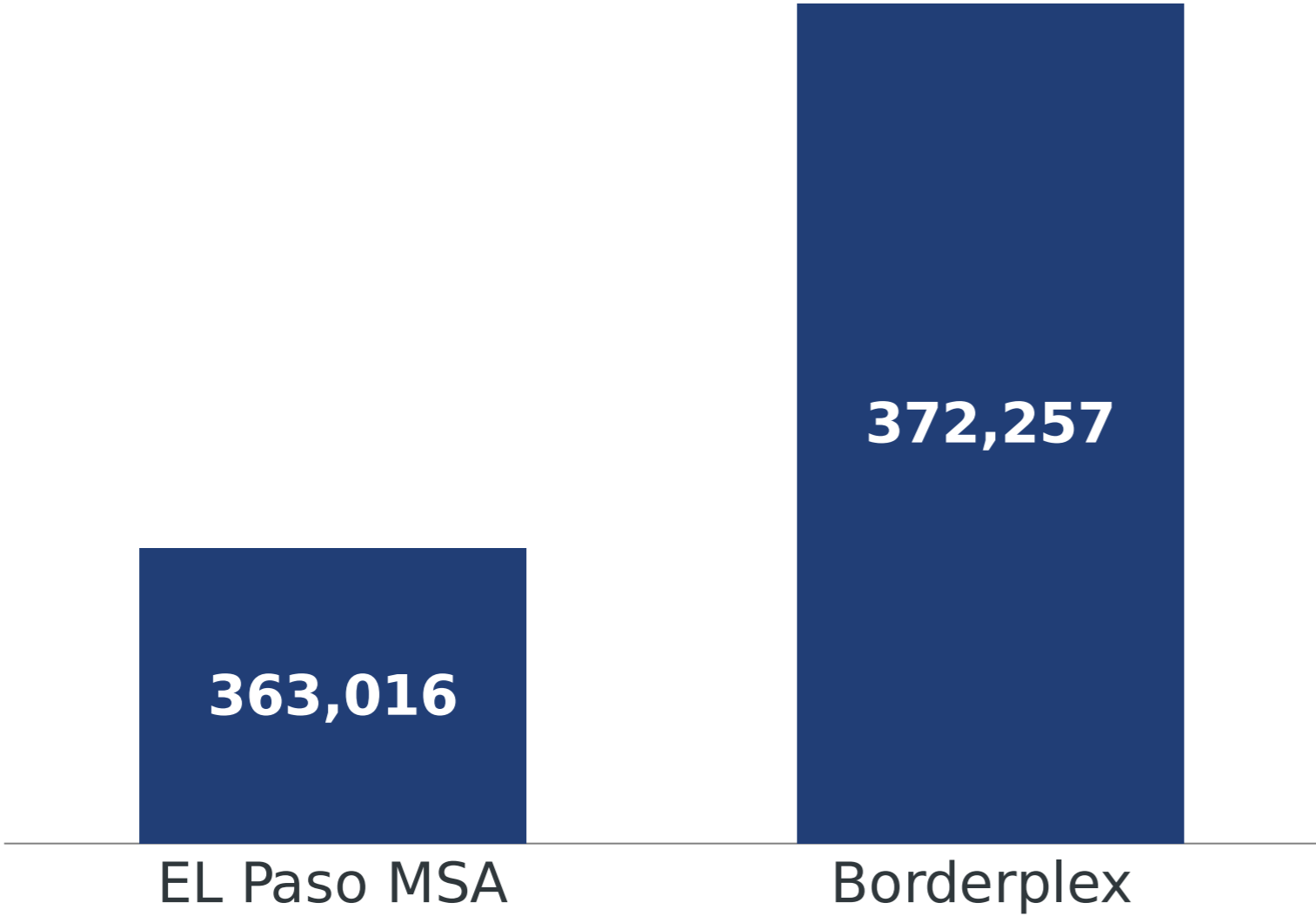




# WHERE DO WE WORK?

WORKFORCE SOLUTIONS  
BORDERPLEX

## EMPLOYMENT in October 2023

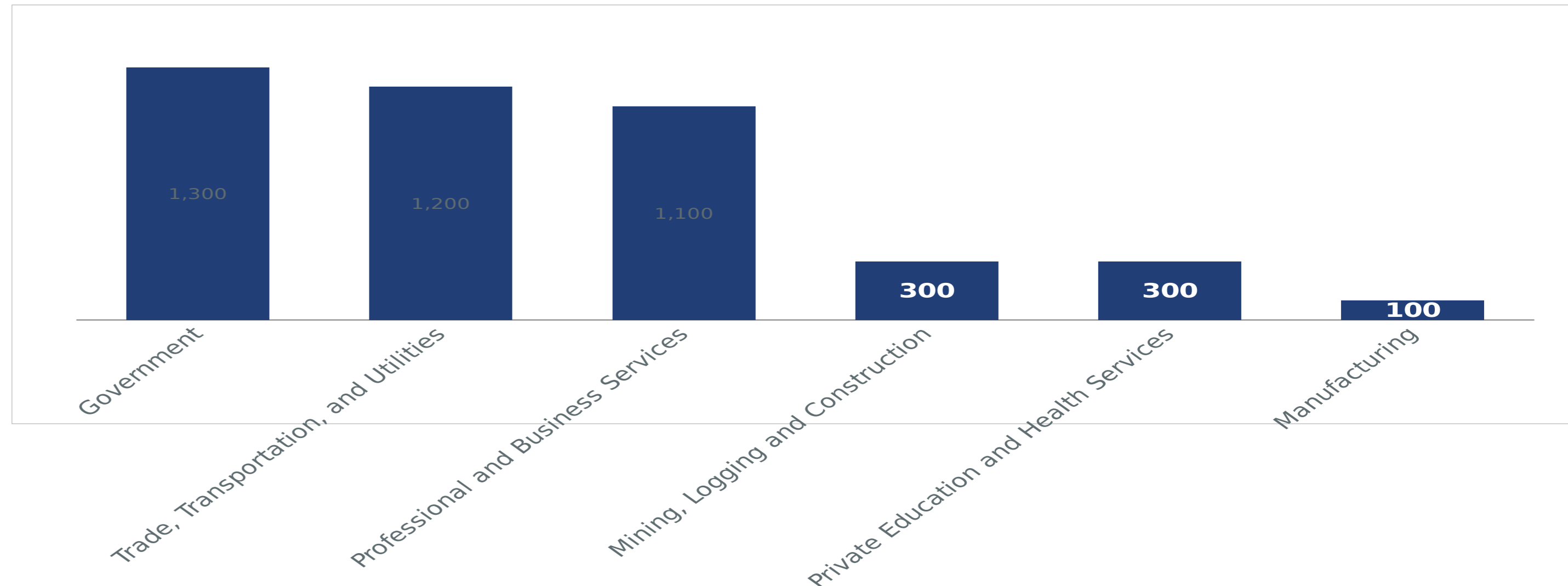




# WHERE DO WE WORK? (Cont.)

WORKFORCE SOLUTIONS  
BORDERPLEX

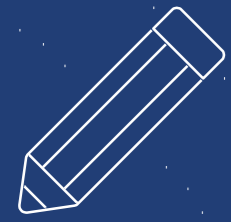
## Industries Sectors that added jobs



## Top 5 Job Postings in the El Paso, TX MSA

Occupation	Vacancies	Median Hourly Earnings BLS 2022
First-Line Supervisors of Retail Sales Workers	590	\$ 17.50
Retail Salespersons	584	\$ 12.53
Fast Food and Counter Workers	409	\$ 10.07
Customer Service Representatives	372	\$ 14.73
Stockers and Order Fillers	351	\$ 14.54

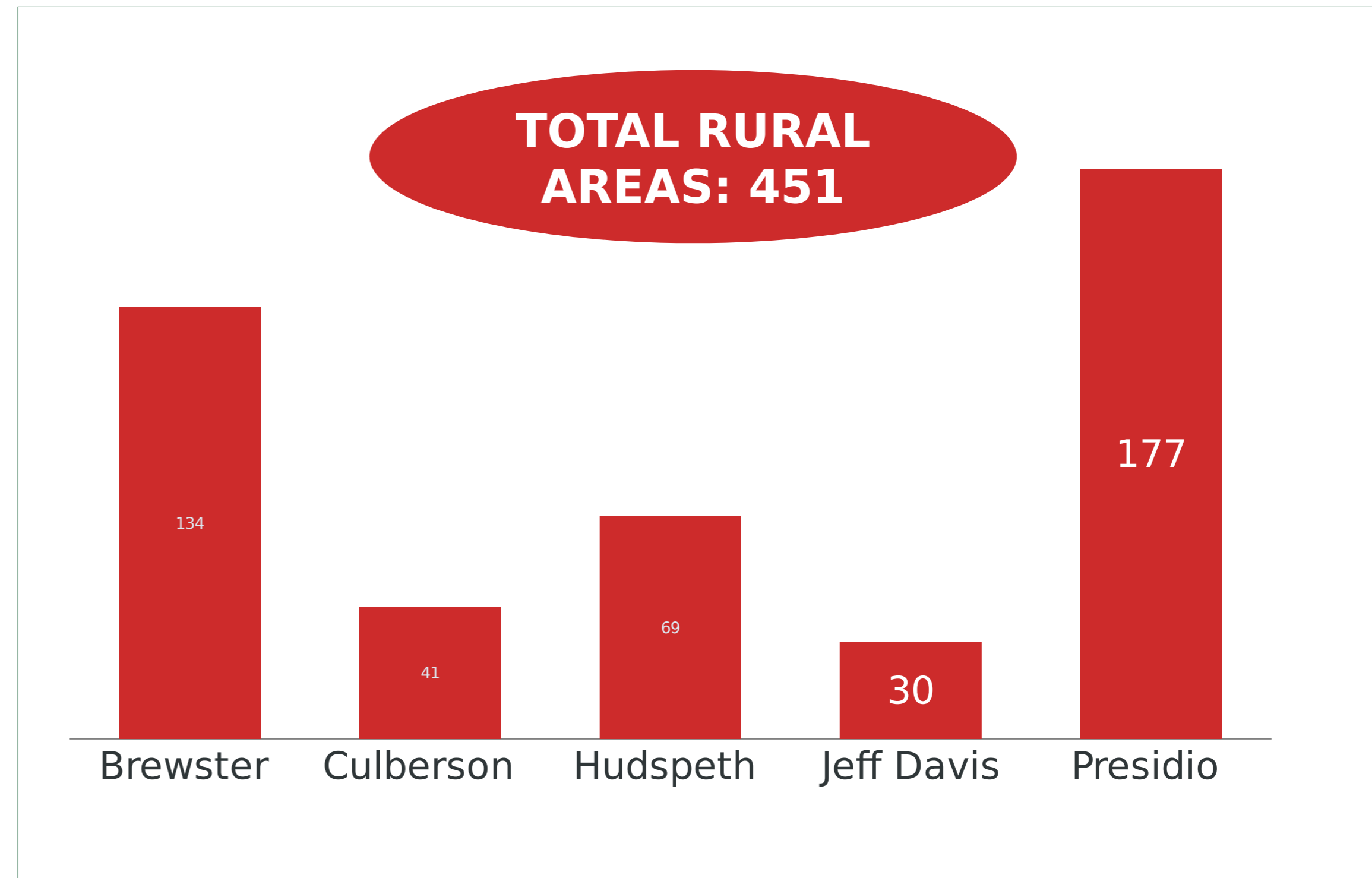
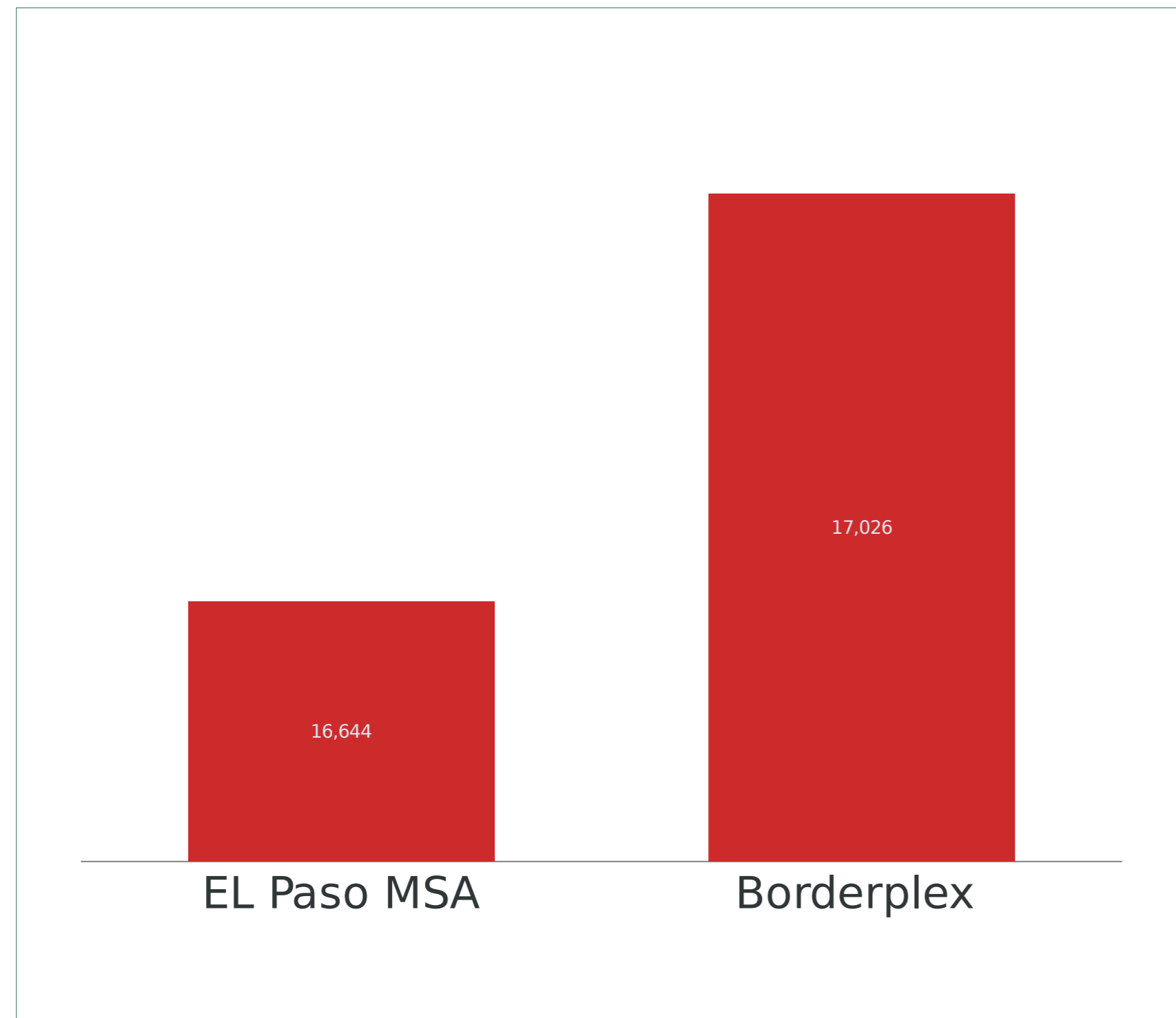
Job postings active during October 2023



# WHERE ARE WE LOSING JOBS?

WORKFORCE SOLUTIONS  
BORDERPLEX

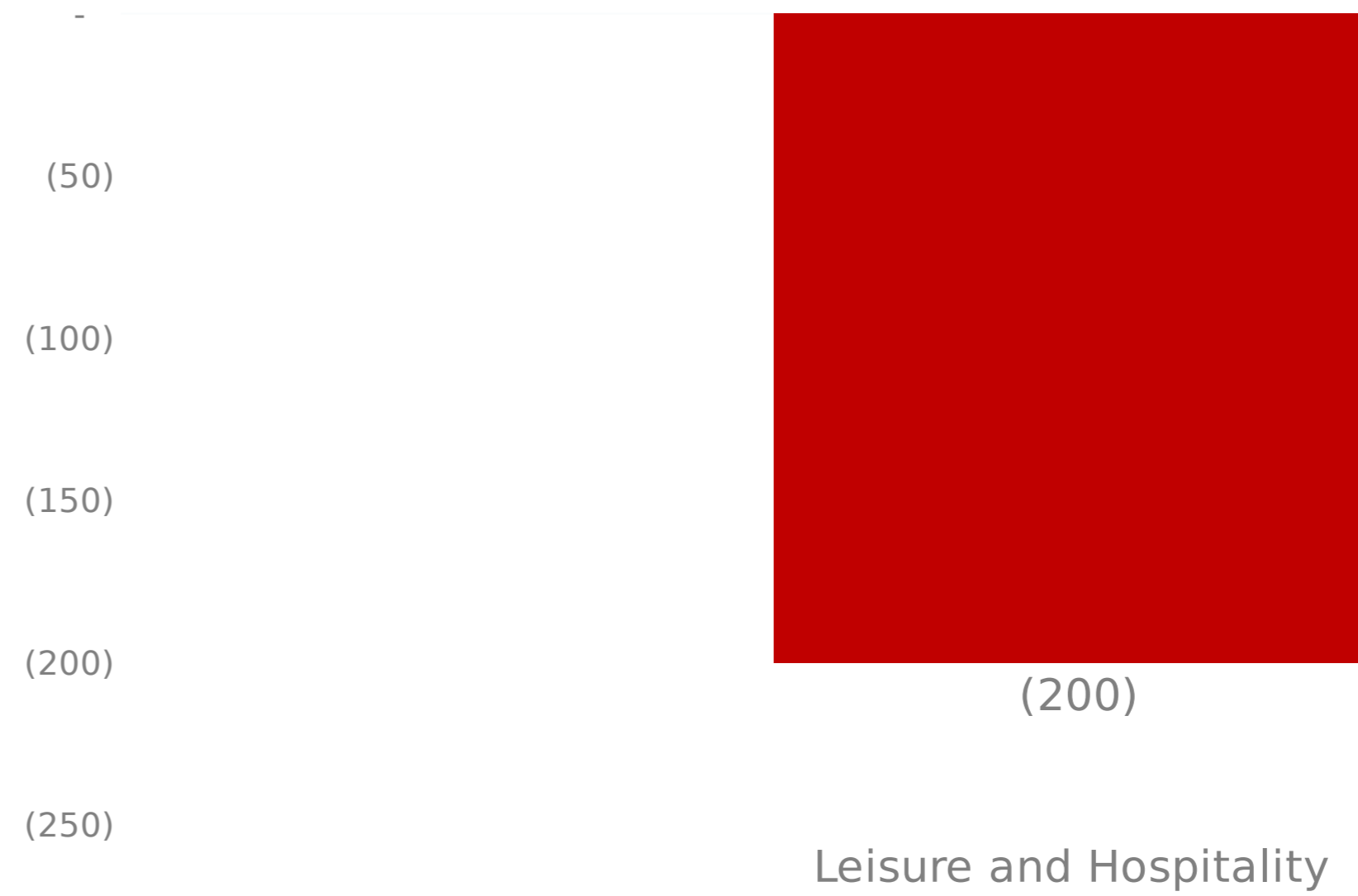
## UNEMPLOYMENT in October 2023



# WHERE ARE WE LOSING JOBS? *(Cont.)*

WORKFORCE SOLUTIONS  
BORDERPLEX

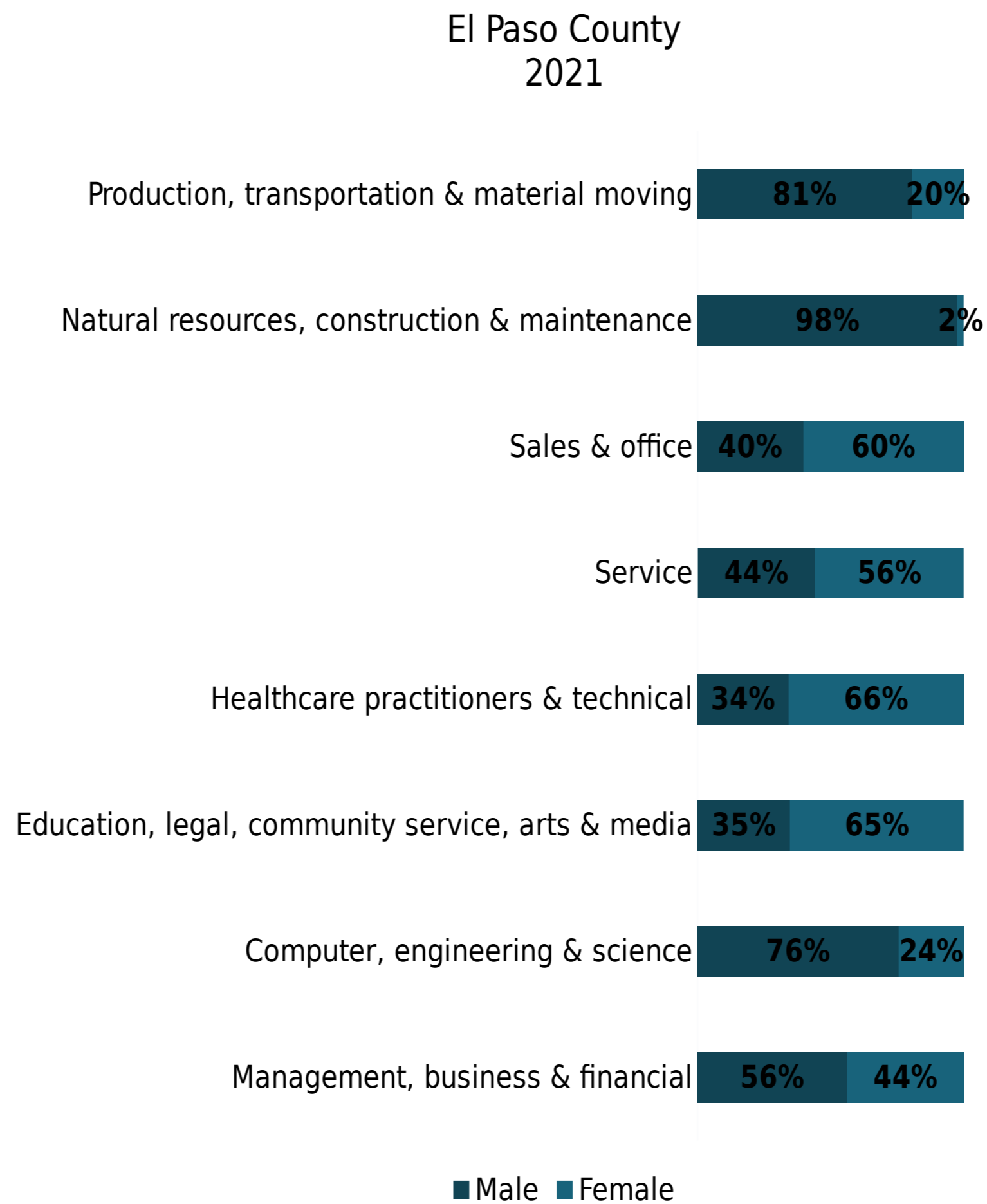
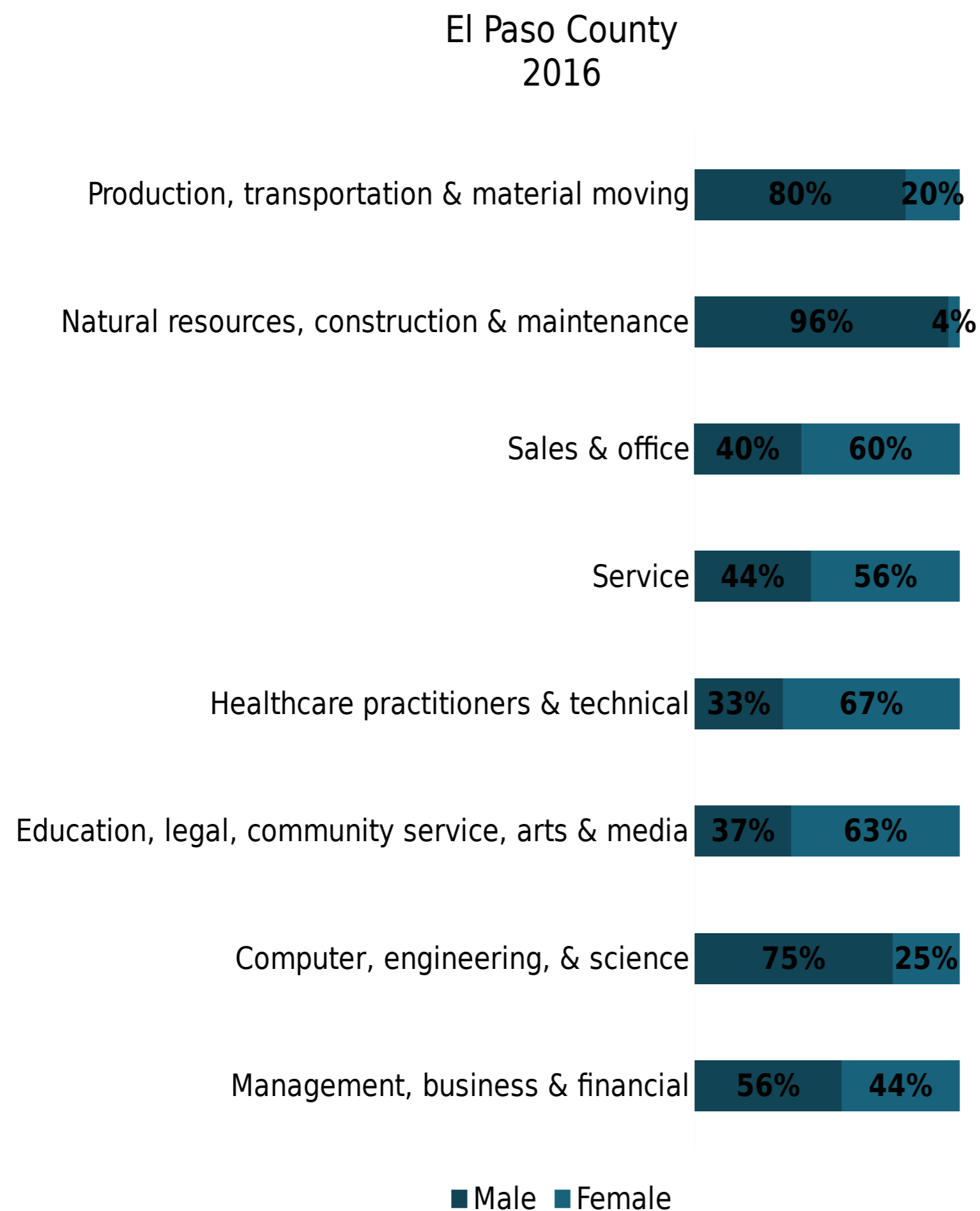
## *Industries Sectors that lost jobs*





# In the Works

## Occupation by Gender Population 16+ years



From 2016 to 2021, there has not been a significant change in the equal representation of women across all industries. Male-dominated occupations have less than 20% of women working in those occupations. The male-dominated occupations include natural resources, construction, maintenance, production, and transportation.

Women are also significantly underrepresented in management and STEM occupations.

**WSB addresses the gender equity and wage gap by providing new initiatives tailored to assist women to succeed in the workforce.** We offer resources such as childcare, training assistance, and job search assistance, among others. If you are interested in these or any other of our services, feel free to fill out [this form](#) and a WSB member will contact you soon.

Source: US Census 2016, 2021



A proud partner of the  
americanjobcenter  
network

## **Sources**

Labor Market & Career Information, Texas Workforce Commission November 2023, JobsEQ November 2023, Bureau of Labor Statistics May 2022, Census 2016 & 2021

To access previous reports, please visit the Workforce Trends and Data section of our website:

<http://www.borderplexjobs.com/regional-statistics/workforce-trends-and-data>

Funded by all or in part of, the Department of Labor/ETA WIOA Formula Grants and Wagner-Peyser; the Department of Health and Human Services TANF and Childcare Development Fund; and the Food and Nutrition Service SNAP Employment & Training.”

Equal Opportunity Employer/Program. Auxiliary aids and services are available upon request to individuals with disabilities. Relay Texas: 711 (Voice) or 1-800-735-2989 (TTY).

Igualdad de oportunidades de Empleo/Programas. Equipo auxiliar y servicios de apoyo están disponibles para personas con discapacidad al ser requeridos. Relay Texas: 711 (Voz) o 1-800-735-2989 (TTY)