



ICELAND AND THE COSMOS

A TOTAL SOLAR ECLIPSE AT SEA

Orbridge

CRUISE ABOARD SWAN HELLENIC'S EXCLUSIVELY
CHARTERED EXPEDITION SHIP *SH VEGA*

Iceland and the Cosmos | Itinerary Highlights (subject to change)

Day 1 EN ROUTE FROM U.S.

1

Day 2 ARRIVE IN KEFLAVÍK, ICELAND | REYKJAVÍK – EMBARKATION (R,D) Upon arriving to Keflavík Airport an Orbridge representative will be waiting to assist with your transfer to the hospitality room in Reykjavík. En route to the vessel, enjoy a panoramic tour of the city driving past a variety of notable landmarks including Harpa concert hall and the iconic Hallgrímskirkja church. As embarkation begins take time to settle into your stateroom and become acquainted with the state-of-the-art *SH Vega*—your home away from home during this thrilling expedition. This evening gather with fellow travel companions for a special welcome reception and captain's gala dinner to celebrate the adventures to come.

Day 3 ÍSAFJÖRDUR (B,L,D) Awake to remarkable scenery and crisp Nordic air. Gather for breakfast then disembark for the peaceful village of Bíldudalur—a small community that was once a bustling fishing and trading hub. The town is also a gateway to our next destination—Dýnjandi waterfall, whose name translates to thunderous. Surrounded by craggy cliffs, lush green moss and basalt rock formations this majestic setting is a perfect backdrop for photographers and nature lovers. A short hike brings you to the base of the waterfall. Along the way encounter several smaller waterfalls that are part of the main water system, together forming a cumulative height of approximately 328 feet. Return to the ship for lunch and a leisurely afternoon cruise to Greenland.

Day 4 ITTOQQORTOORMIIT, GREENLAND (B,L,D)

4 Visit the town's small but fascinating museum featuring artifacts that trace the area's unique history and traditions. Next watch various craft demonstrations followed by a tasting of local delicacies, which may include dried fish, musk ox or other Arctic fare. Before returning to the ship, gather at a local's home for a *kaffemik*—a welcoming opportunity to share coffee, cakes and conversation with your gracious hosts.

Day 5 ECLIPSE DAY | SAILING THE PATH OF TOTALITY (B,L,D) As the ship is positioned strategically along the path of totality for unobstructed views of the sky, anticipation builds for today's celestial event. The captain and crew will provide updates on the eclipse's progress, and solar viewing glasses will be distributed. As the moon fully covers the sun, the sky darkens and temperatures drop. The sun's corona, a stunning halo of light, creates an ethereal and otherworldly spectacle. Embrace this moment, and experience the profound sense of wonder and connection to the cosmos. Afterward reflect on your experience with fellow travel companions. *(Eclipse viewing is entirely weather-dependent.)*

Day 6 SNÆFELLSNES PENINSULA (B,L,D) Following lunch disembark for an excursion to the Snæfellsnes Peninsula, whose iconic Snæfellsjökull Glacier provided inspiration for Jules Verne's *Journey to the Center of the Earth*. Explore lava fields and visit the black sand beaches of Djúpálónssandur. The peninsula also features unique geological formations including the striking basalt columns at the fishing village, Arnarstapi. Tonight prepare for another gourmet dinner featuring fresh, locally sourced ingredients.

Day 7 AKRANES | DEILDARTUNGUHVER | REYKJAVÍK (B,L,R,D) Today's highlight features a visit to the Krauma Geothermal Baths with time to relax and rejuvenate. Fed by the Deildartunguhver hot spring, the most powerful in Europe, Krauma offers an unforgettable thermal bathing experience. Return to the ship for lunch and enjoy the afternoon sailing toward Reykjavik. Tonight gather for a lively farewell reception followed by a convivial gala dinner.

Day 8 REYKJAVÍK – DISEMBARKATION | KEFLAVÍK | DEPART FOR U.S. (B) After breakfast guests departing during the suggested times will take a complimentary transfer to the airport for flights home.

(B = Breakfast, L = Lunch, D = Dinner, R = Reception)



What's Included

- 6 nights aboard exclusively chartered, luxurious *SH Vega*
- All meals: 6 breakfasts, 5 lunches and 6 dinners (served with wine, beer or non-alcoholic beverages) plus special welcome and farewell receptions
- Private tours and special small-group excursions as noted in the 8-day itinerary
- Full guiding services of a team of Orbridge Expedition Leaders and expert local guides
- Private motor coach transportation
- Luggage portage
- Gratuities to ship crew, Orbridge Expedition Leaders, local guides, drivers, porters and wait staff for included meals
- Airport transfers for guests arriving and departing during the suggested times

Activity Level: Activities include shore excursions and small boat cruises. Guests should be sure-footed on stairs and ramps, be able to walk or hike at least one mile on uneven and slippery terrain, and be comfortable landing on various terrain and boarding small vessels.



Restaurant



Pool



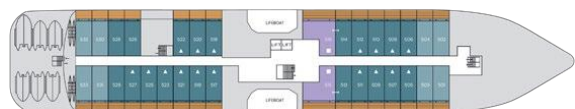
Club Lounge



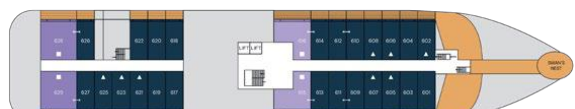
Deck 3



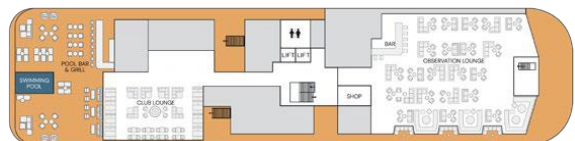
Deck 4



Deck 5



Deck 6



Deck 7

Onboard SH Vega

Embark on an unparalleled journey of luxury and elegance aboard the SH Vega. From the moment you step on board, you'll be enveloped in an atmosphere of opulence and comfort.

Refined staterooms, each featuring ocean views, offer a serene retreat after the day's adventures. Inviting common spaces foster a sense of warm camaraderie among fellow travelers.

Indulge in gourmet dining that elevates every meal to an extraordinary culinary experience. The ship offers several dining venues to cater to different tastes and preferences.

The observation lounge offers floor-to-ceiling windows providing stunning panoramic views of the surrounding landscapes.



D4 Oceanview M4 Oceanview

One double or two single beds, living room area, private bathroom, and flame-effect fireplace. (approx. 215 sq.ft.)



D5 Balcony M5 Balcony

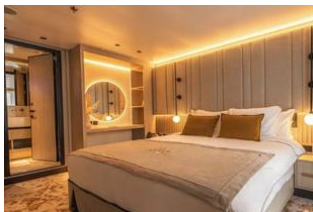
D6 Balcony

One double or two single beds, living room area, private bathroom, flame-effect fireplace, and private balcony. (approx. 269 sq.ft. with balcony approx. 54 sq. ft.)



Suite

King bed, living room, large private bathroom with separate bathtub and walk-in shower, flame-effect fireplace, and private balcony. (approx. 430 sq.ft. with balcony approx. 108 sq. ft.)



Premium Suite

King bed, walk-in wardrobe, living room, large private bathroom with separate bathtub and walk-in shower, flame-effect fireplace, and private balcony. (approx. 505 sq.ft. with balcony approx. 129 sq. ft.)



Optional Pre-Tour Reykjavík

Begin your adventure in Iceland's vibrant capital city rich with timeless traditions, intriguing history and colorful culture. Discover the area's Viking and maritime heritage during museum visits, and immerse yourself in the tranquil geothermal waters of the area's iconic lagoons.

Day +1 EN ROUTE FROM U.S.

Day +2 **ARRIVE IN KEFLAVÍK, ICELAND | REYKJAVÍK**
Upon arriving to Keflavik International Airport transfer to the Blue Lagoon for a unique geothermal spa experience. Next visit Hallgrímskirkja, one of Iceland's most iconic landmarks. This towering Lutheran church is renowned for its unique architectural design. Marvel at the magnificent pipe organ, designed by the German organ builder Johannes Klais, standing 49 feet tall with an impressive 5,275 pipes. Continue to the hotel for check-in and the remainder of the day at leisure.

Day +3 **REYKJAVÍK (B)** Meet a local guide for a comprehensive city tour. Venture inside Perlan, a natural history museum with exhibits showcasing Iceland's natural phenomena. Continue to the National Museum of Iceland, a treasure trove of artifacts and exhibits that chronicle Iceland's rich and complex history from the Viking Age to modern times. Conclude touring with an inside visit to Harpa, Reykjavik's stunning glass concert hall and cultural center. Enjoy the afternoon and evening at leisure to explore independently.

Day +4 **REYKJAVÍK | GOLDEN CIRCLE | MAIN PROGRAM BEGINS (B,L)** Following breakfast and check-out depart for a full-day Golden Circle excursion. This scenic route takes you through some of the country's most iconic natural and historical landmarks including Þingvellir National Park, Geysir Geothermal Area and Gullfoss Waterfall. Also stop at a local farm for a tour and delightful lunch. Later join guests arriving for the main program.

What's Included

- 2 nights hotel accommodations at Iceland Parliament Hotel (or similar)
- 2 breakfasts and 1 lunch
- Guided city and Golden Circle touring
- Entrance fees to Perlan Museum, National Museum and Harpa concert hall
- Luggage portage
- Guiding services of an Orbridge Travel Director
- Gratuities to Orbridge Travel Director, local guide, driver and porters
- Airport transfers for guests departing during the suggested times

