



Premier | Sotheby's
INTERNATIONAL REALTY



Breedlove[®]

FARMS | ESTATES | LAND

**6355 Hickory Hill Ln,
Stanfield, NC 28163**

Emma Scruggs | 704.499.0318
emma@breedlovecarolinas.com

Julie R. Breedlove | 704.661.9619
julie@breedlovecarolinas.com

BreedloveFarmsEstatesandLand.com



6355 Hickory Hill Ln, Stanfield, NC 28163

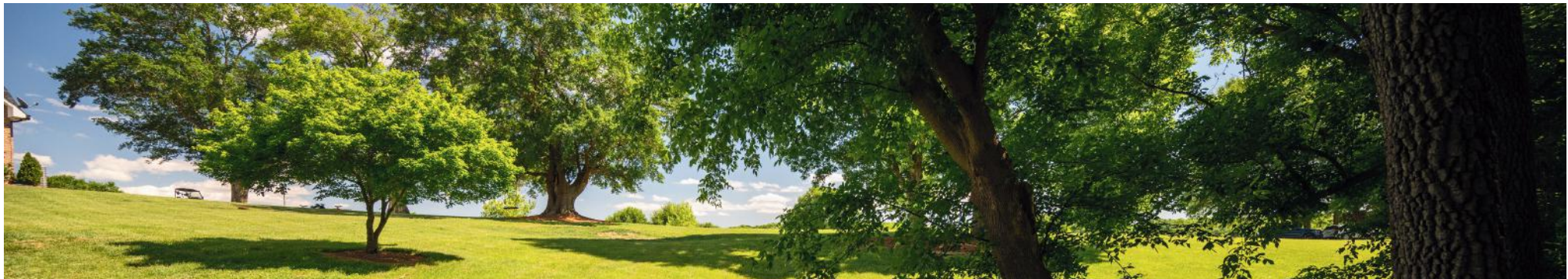
Set on 10 private acres in Stanly County, 6355 Hickory Hill Lane offers a brick farmhouse updated in 2024 with open rolling pasture, woods, a seasonal creek, and thoughtful improvements throughout. The property provides a combination of privacy, usable acreage, and comfortable everyday living.

Inside, the home feels warm and inviting with hardwood floors, exposed wood beams, a vaulted ceiling, and a wood hearth electric fireplace. The kitchen is well appointed with granite countertops, a farmhouse sink, dovetail soft-return drawers, and a glass tile backsplash. The main-level layout includes the primary suite, two guest bedrooms, a home office, and well-designed living spaces for everyday use. The primary suite features a spacious bath with dual vanities, subway tile, and a custom glass tile surround shower.

Upstairs, a large bonus room, half bathroom, and generous storage offer flexible space for guests, hobbies, or additional living needs. Outdoor living is centered around the large covered back deck overlooking the acreage, perfect for enjoying a quiet cup of coffee in the morning or entertaining in the evening.

Additional features include a 351 sq ft donkey/pony barn with stall mats, fenced paddock, and a chicken coop with nesting boxes. With existing farm infrastructure, an updated home, and room to enjoy the land, this property is ready to welcome its next owners. Whether your vision includes a hobby farm, homesteading, gardening, or simply more room to play, 6355 Hickory Hill Lane offers space, comfort, and privacy in the beautiful Stanly County setting.

This property offers the quiet of a country setting without feeling disconnected. Enjoy quick access to the heart of Stanfield and nearby Locust, approximately 30 minutes from Monroe, around 50 minutes from Charlotte.



Aerial

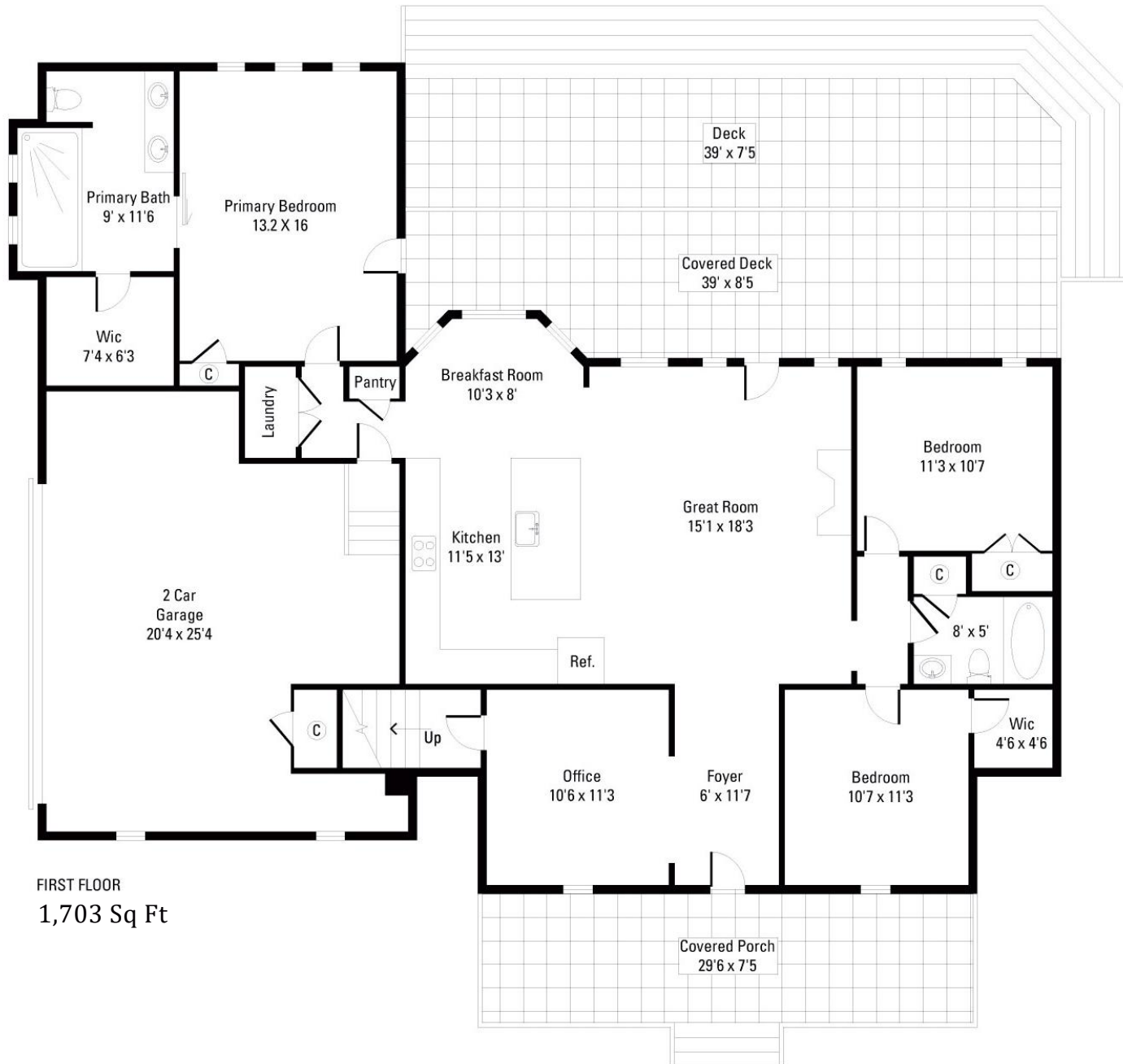
10.17 Acres

Parcel ID: 5552-01-25-5049

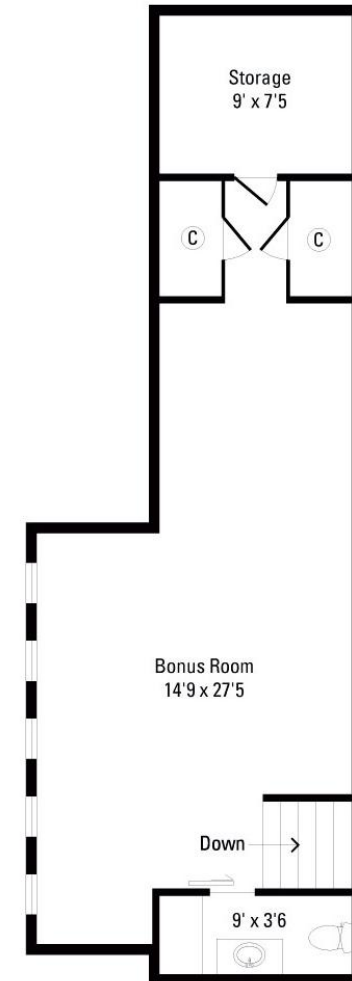


Floor Plans

2,190 Total Sq Ft



FIRST FLOOR
1,703 Sq Ft



SECOND FLOOR
487 Sq Ft

Interior Features

Year Built 1998 w/ Recent Renovations

2,190 Sq Ft

3 Bedrooms/2.5 Bathrooms

Main Floor Office

Crown Molding & Oak Hardwood Flooring

Updated Lighting & Plumbing Fixtures

Silhouette Blinds

Interior 5 Panel Doors

Anderson Doors

6 Pane Glass & Wood Front Door
w/Matching Side Lights



Kitchen

3 Seat Breakfast Bar w/Shiplap Accents & Pendant Lighting

Granite Countertops

Farmhouse Sink w/Gooseneck Faucet

Dove Tail, Soft Return Drawers

Glass Tile Backsplash

6 Burner Gas KitchenAid Stove w/Exhaust Hood

Sharpe Microwave Drawer

KitchenAid Fridge & Freezer w/Water & Ice Dispenser

Adjacent Dining Area w/Large Bay Windows

Pantry Closet w/Solid Shelves



Great Room

Vaulted Ceilings w/ Wood Beams

Shiplap Surround Electric Fireplace
w/Wood Hearth

Wagon Wheel Candle Light Chandelier

French Doors Open To Covered Back Porch

Large Arched Picture Window

Open Floorplan To Kitchen & Dining Area



Primary Suite

Exterior Glass Door To Back Deck

Electric Silhouette Blinds

Wall Of Windows Overlooking Rolling Fields

Adjacent To Laundry Closet

Hardwood Floors

Crystal Fandelier

Full Bathroom

Barn Door To Bathroom

Subway Tile Shower Surround

Shampoo Niche & Handheld Shower Head
w/ Rainhead

Custom Glass Pane Surrounds Shower

Skylight

Tile Flooring

Walk-In Closet W/Solid Shelving



Guest Bedrooms

Guest Bedroom #1

Ceiling Fan

Wall Closet

Windows Overlooking Back Fields



Guest Bedroom #2

Ceiling Fan

Walk-in Closet w/Solid Shelving

Full Bathroom

Subway Tile Surround Shower/Tub Combo
Handheld Shower Head w/Rainhead
Rolling Glass Door

Quartz Countertop

Linen Closet



Upstairs Bonus Space

Extra Wide Staircase

Large Window Seat Storage Bench

Can Lighting

2 Large Storage Closets w/Shelving

Walk In Attic Storage

Oak Flooring

Half Bathroom

Granite Countertop

Pocket Door

Marble Countertop Vanity

Additional Cabinet Storage



Outdoor Living

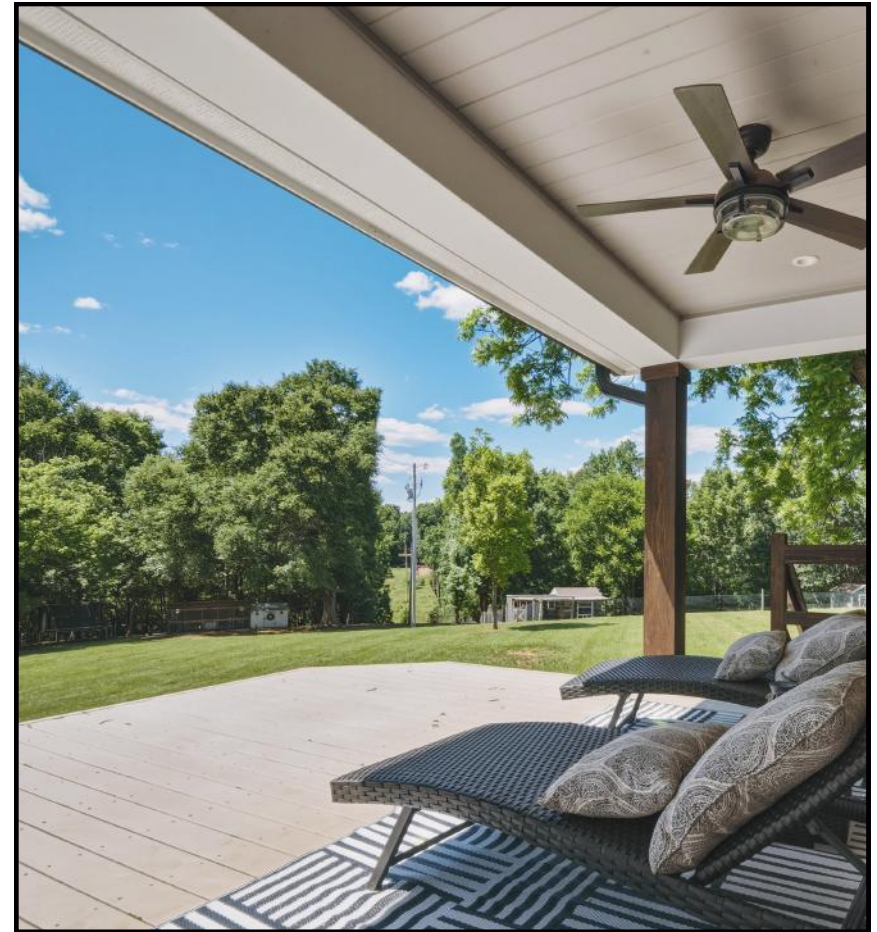
Large Front Porch w/Wood Tongue & Groove Ceiling

2 Ceiling Fans

Timber Columns

Wood Decking

Large Covered Back Deck w/Ceiling Fan & Stairway Lighting



Exterior Features

Brick Exterior

Hardwood Dormers

Architectural Shingle Roof (2023)

Paver Sidewalk

Wood Shutters

Landscape Lighting

Concrete Parking Pad



Garage

Oversized 1 Car Garage

Interior Access Door

Epoxy Flooring

Keyless Pad Entry

Storage Space & Closet

Side Facing



Farm Features

10.17 Acres - 6 Acres Cleared/4.17 Acres Wooded
Large Shade Hardwood Trees Among Rolling Fields
Seasonal Creek

Frost-Free Water Spigots

Pony/Donkey Barn (351 sq ft)

2 Stalls & Overhead Shelter

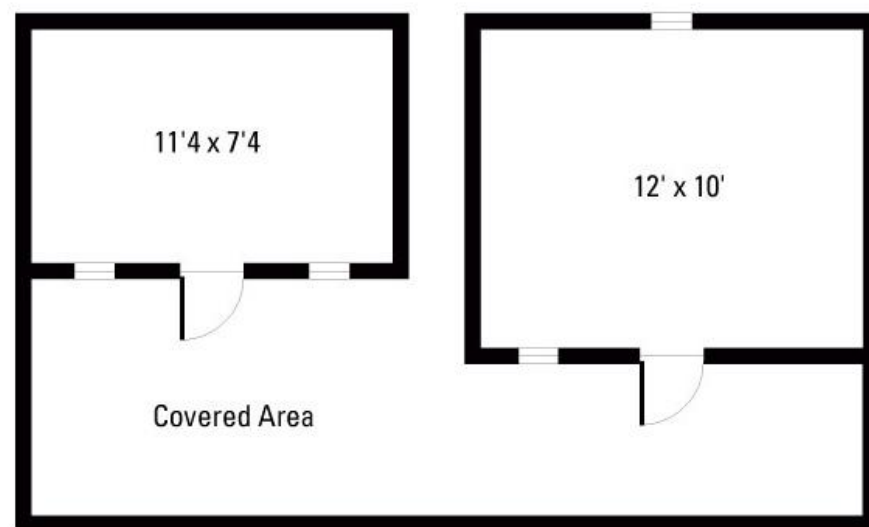
Stall Mats, Windows, & Dutch Door

Paddock w/Gate & No Climb Fencing

Chicken Coop (160 sq ft)

Nesting Boxes, Outdoor Solar Lighting

Storage Shed (124 sq ft)



BARN

Mechanicals

Private Well & 3 Bedroom Septic System

2 Dual Fuel Heat & Air Systems (2023)

Owned, Below Ground Propane Tank

Propane Hot Water Heater (2023)

Water Filtration & Softener

Direct TV

Verizon Internet

Sealed Crawlspace

6 Inch Gutters





Emma Scruggs | 704.499.0318
emma@breedlovecarolinas.com

Julie R. Breedlove | 704.661.9619
julie@breedlovecarolinas.com

BreedloveFarmsEstatesandLand.com

**6355 Hickory Hill Ln,
Stanfield, NC 28163**



Premier | **Sotheby's**
INTERNATIONAL REALTY

CHARLOTTE OFFICE
532 Governor Morrison Street #C110
Charlotte, NC 28211

Sotheby's International Realty® and the Sotheby's International Realty logo are registered service marks used with permission. Each office is independently owned and operated. Equal Housing Opportunity. If your property is listed with a real estate broker, please disregard. It is not our intention to solicit the offerings of other real estate brokers. We are happy to work with them and cooperate fully. Property information herein is derived from various sources that may include, but not limited to county records and the multiple listing service and it may include approximations. Although this information is believed to be accurate, it is not warranted.