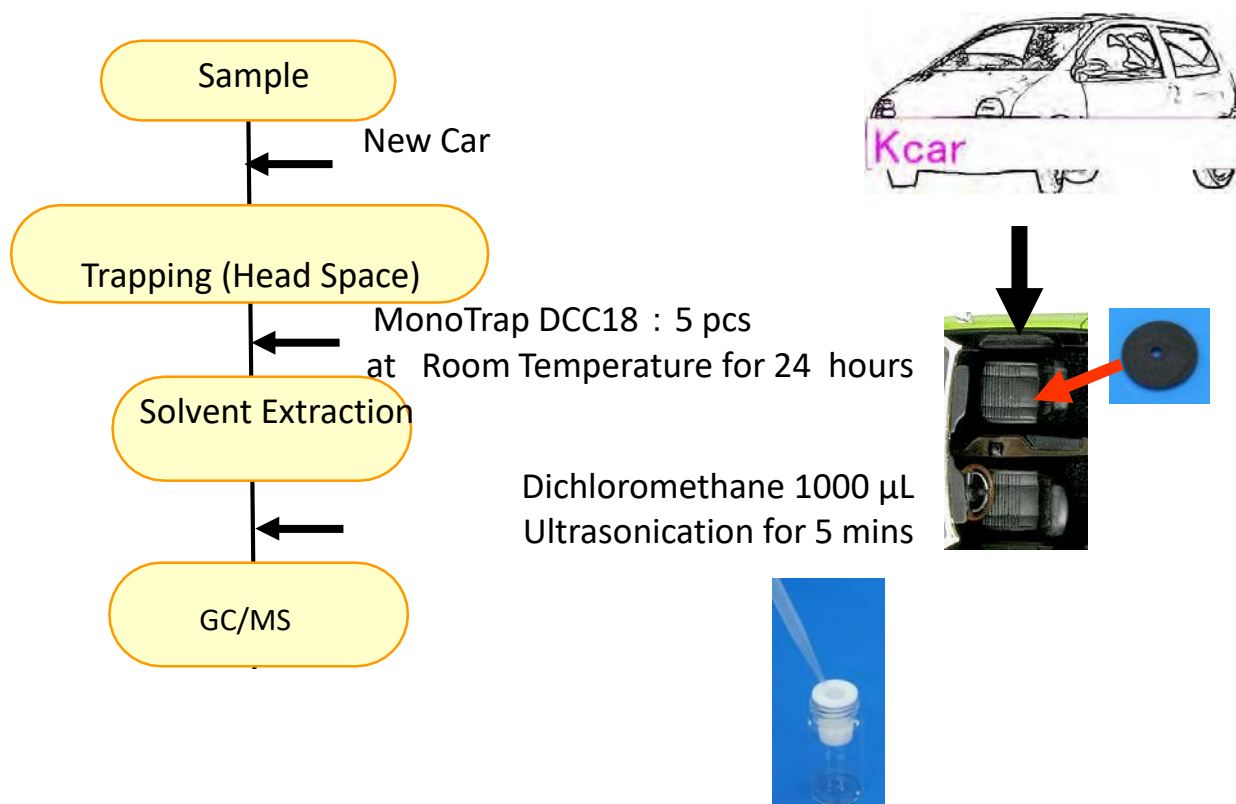


MonoTrap is a hybrid novel adsorbent that combines large surface area and properties of silica gel, activated carbon, and ODS. Utilizing the surface of porous silica, it can be used as a tool that makes use of the large surface area and the adsorbent effect caused by the inclusion of activated carbon for high collection efficiency and for short time and sensitive analysis. MonoTrap DCC18 (with activated carbon) was used to analyze VOCs in new vehicles. Activated carbon is effective in collecting polar and low boiling components. It is also easy to collect by simply placing a small collection material inside the car room. Capture concentration can also be used as usual, and simple and stress-free enrichment analysis can be performed.

Column : InertCap Pure-WAX 0.25 mm I.D. × 30 m df=0.25 μ m

Protocol



GC Condition

System : SHIMADZU GC-2010, GCMS-QP2010 Plus

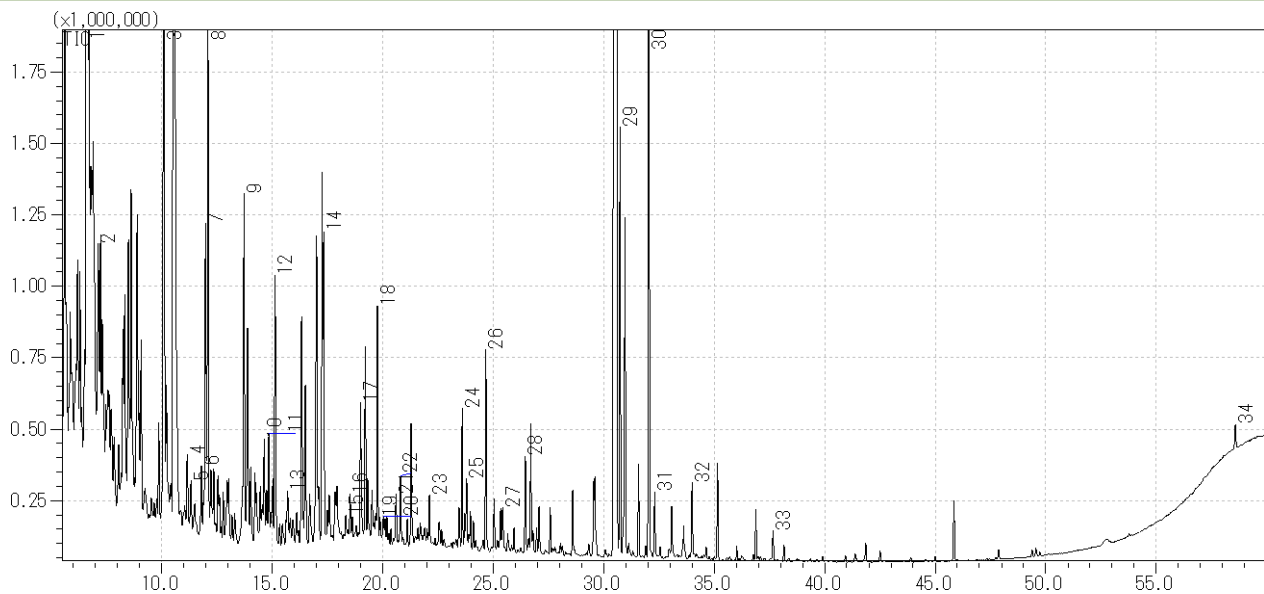
Column : InertCap Pure-WAX Cat.1010-68142
0.25 mm I.D. × 30 m df=0.25 μ m

Column Temp : 40 °C (5 min) → 4 °C/min → 250 °C

Carrier Gas : He 120 kPa

Injection : Split less, 1 μ L 250 °C

Detection : MS Scan (m/z 20-350)



- | | |
|--------------------------|--|
| 1 Undecane | 18 Ethylhexanol |
| 2 o-xylene | 19 Decanal |
| 3 Dodecane | 20 Benzaldehyde |
| 4 Styrene | 21 Pentadecane |
| 5 m-EthylMethylToluene | 22 Nonadecane |
| 6 Pentadecane | 23 α -Isophoron |
| 7 1,3,5-TrimethylBenzene | 24 tetramethylbutanedinitrile |
| 8 Hexadecane | 25 Hexadecane |
| 9 Tridecane | 26 TEP |
| 10 4-ethyl-o-xylene | 27 Eicosane |
| 11 o-Cymene | 28 Naphthalene |
| 12 3-ethyl-o-xylene | 29 3-Hydroxy-2,2,4-trimethylpentyl ester of isobutanoic acid |
| 13 p-Cymene | 30 BHT |
| 14 Durene | 31 Benzothiazole |
| 15 Furfural | 32 Phenol |
| 16 p-Ethylstyrene | 33 Caprolactam |
| 17 Durene | 34 Di-n-octyl phthalate |

GL Sciences disclaims any and all responsibility for any injury or damage which may be caused by this data directly or indirectly. We reserve the right to amend this information or data at any time and without any prior announcement.

GL Sciences, Inc. Japan

22-1 Nishishinjuku 6-Chome
Shinjuku-ku, Tokyo,
163-1130, Japan
Phone: +81-3-5323-6620
Fax: +81-3-5323-6621
Email: world@glsc.co.jp
Web: www.glsciences.com

GL Sciences B.V.

De Sleutel 9
5652 AS Eindhoven
The Netherlands
Phone: +31 (0)40 254 95 31
Email: info@glsciences.eu
Web: www.glsciences.eu

GL Sciences (ShangHai) Ltd.

Tower B, Room 2003,
Far East International Plaza,
NO,317 Xianxia Road,
Changning District.
Shanghai, China P.C. 200051
Phone: +86 (0)21-6278-2272
Email: contact@glsciences.com.cn
Web: www.glsciences.com.cn

GL Sciences, Inc. USA

4733 Torrance Blvd. Suite 255
Torrance, CA 90503
Phone: 310-265-4424
Fax: 310-265-4425
Email: info@glsciencesinc.com
Web: www.glsciencesinc.com

International Distributors

Visit our Website at:

<https://www.glsciences.com/company/distributor.html>