



Mystic Kingdoms

28TH AUGUST TO 2ND OCTOBER 2026

EXPERIENCE THE THRILL OF DRIVING LIKE NEVER BEFORE





28TH AUGUST TO 2ND OCTOBER 2026

EMBARK ON A LIFE- CHANGING HIMALAYAN ADVENTURE

This one-of-a-kind, thirty-six-day, endurance challenge will see our classic car crews journeying over 5,500 km through Bhutan, Nepal, India, and Tibet.

Mystic Kingdoms will test our physical and mental endurance as we face extreme temperatures ranging from -22°C to 43°C and altitudes up to 5600m. However, the experience will be worth it, as we will witness stunning landscapes, rare wildlife, and culturally significant sites on our journey between across the Himalayas.

CHALLENGE ROUTE



MYSTIC KINGDOMS

INDIA

ITINERARY

DAY 1

FRIDAY 28TH AUGUST | KOLKATA

Starting from the port city of Kolkata, we will spend the first day of our challenge completing scrutineering and documentation checks before gathering for an afternoon of sightseeing and delightful Bengali cuisine.

DAY 2

SATURDAY 29TH AUGUST | KOLKATA

Day two serves as a well-deserved rest day, giving our crews the chance to acclimatize after their travels while we delve into the vibrant culture of Kolkata. Our guided tour begins at the iconic Victoria Memorial Hall, an architectural gem that reflects the grandeur of the British Raj. We will then experience the bustling energy of the city from the famous Howrah Bridge before immersing ourselves in the color and fragrance of the Mullick Ghat Flower Market, one of the largest and oldest in India.

In the artisan quarter of Kumartuli, we will witness skilled craftsmen shaping divine figures from clay, an age-old tradition rooted in Bengal's festival heritage. The day concludes with a visit to the breathtaking Sheetalnathji Jain Temple, adorned with shimmering mirrors, intricate mosaics, and stunning marble carvings. This immersive experience offers a captivating introduction to Kolkata's rich history, artistry, and spiritual allure.



DAY 3

SUNDAY 30TH AUGUST | KOLKATA TO MALDA

After an early start, on day three. We will travel north, skirting the border with Bangladesh as we pass through Silbaria and Ulasi before lunch in Krishnanagar. We will then travel along asphalt roads and highways, crossing the Ganges via the Farakka Barrage bridge before reaching our overnight stop in Malda, known for its high-quality Murshidabad silk and the unique Fazli mango.

Route details may be subject to change.

DAY 4

SUNDAY 31ST AUGUST | MALDA TO CHALSA

The fourth day of our challenge will begin with a drive through the West Bengali countryside towards Dalkhola, passing through rural towns and farming villages towards Kishanganj. After a leisurely lunch in Kishanganj, we will start a steady climb towards the foothills of the Himalayas, passing through green tea gardens and mountain villages before stopping on the edge of the Gorumara National Park in Chalsa.



MYSTIC KINGDOMS

BHUTAN

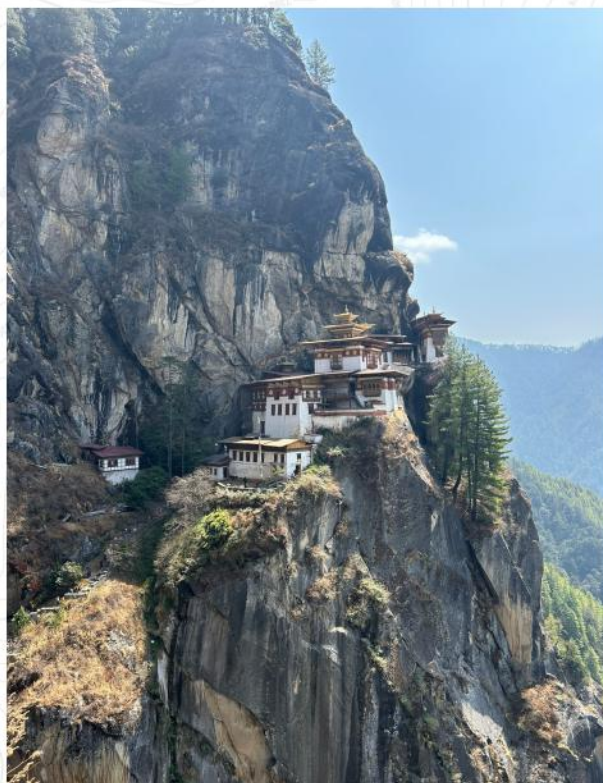
DAY 5&6

TUESDAY 1ST TO WEDNESDAY 2ND SEPTEMBER | GORUMARA TO PARO

From Chalsa, we will head north towards Phuentsholing, the Bhutanese border crossing, on our way towards the historic Bhutanese town of Paro. We will have a rest day on day six to explore Paro, including a hike to the iconic Taksang Lhakhang (also known as the Tiger's Nest).



Route details may be subject to change.



DAY 7

THURSDAY 3RD SEPTEMBER | PARO TO PUNAKHA

On day seven, we will head east via the forested mountain roads of central Bhutan to Punakha. This ancient town was the capital of Bhutan between 1637 and 1907 is dominated by the white-washed Punakha Dzong, a 17th-century fortress that overlooks the juncture between the Pho Chhu and Mo Chhu rivers.



DAY 8

FRIDAY 4TH SEPTEMBER | PUNAKHA TO PHOBJIKHA VALLEY

From Punakha we will head southeast along serpentine valley roads towards the glacial Phobjikha Valley. We will travel deeper into the valley via gravel roads to embrace the spectacular views of the vast Bhutanese marshlands, framed by the Black Mountains and dotted with Ancient Buddhist monasteries, before heading to our hotel for a well-deserved evening of relaxation.



DAY 10

SUNDAY 6TH SEPTEMBER | THIMPHU TO PHUENTSHOLING

We will leave Thimphu along the Phuentsholing Thimphu Highway, tracing the Thimphu Chu River south. We will stop for lunch overlooking the spectacular mountain valleys in Chapcha before heading south across the Most Excellent High Bridge through the monastery-strewn valleys towards Phuentsholing and our pause for day ten.

DAY 9

SATURDAY 5TH SEPTEMBER | PHOBIJKHA TO THIMPHU

Day nine will begin with a journey east through the picturesque Black Mountains towards Trongsa. The road from Phobjikha Valley to Trongsa is one of the prettiest in Bhutan, passing roadside waterfalls, alpine streams, and tranquil villages before climbing the Pelela Pass into the Trongsa Valley. We will stop for lunch in Trongsa before completing a mazy run west towards our Thimphu, Bhutan's capital and our stop for the night.



Route details may be subject to change.

MYSTIC KINGDOMS

NEPAL

DAY 11

MONDAY 7TH SEPTEMBER | PHUENTSHOLING TO ITAHARI

On day eleven, we will leave Bhutan and travel across the Darjeeling Hills to Biratnagar, Nepal. Our adventure will take us west across the Jaldhaka River at Nagrakata and through the lush greenery of the Chapramari Wildlife Sanctuary, one of the oldest forests in West Bengal and home to Asian elephants, rhinos, and leopards. Lunch will be in the beautiful Haihai Pathar Tea Garden before we journey through hillside towns and tea estates around the Tessa River towards the border crossing into Nepal at Panitanki. From Panitanki, we will head across Southern Nepal to our overnight stop at Itahari.

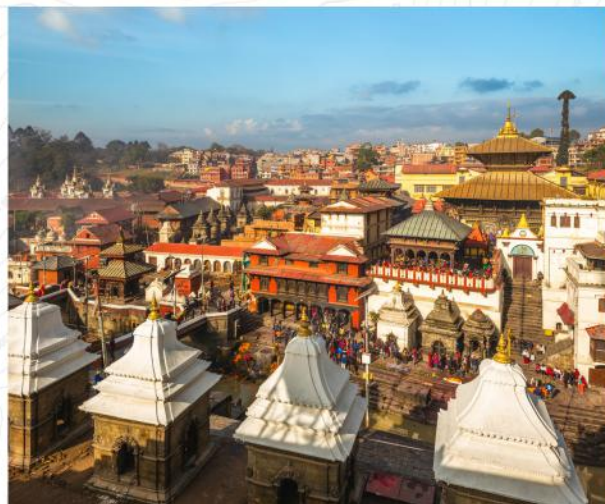
DAY 12

TUESDAY 8TH SEPTEMBER | ITAHARI TO KATHMANDU

From Itahari, we will head northwest, following an astonishing winding route through the foothills and lower valleys of the Himalayas. We will stop for lunch in the mountain city of Kamalamai before continuing our journey along a mix of gravel and asphalt roads to Kathmandu. This ancient city was founded in the 2nd century AD, making it one of the oldest continuously inhabited places in the world and a perfect place to pause for day twelve.



Route details may be subject to change.



DAYS 13, 14 & 15

WEDNESDAY 9TH TO FRIDAY 11TH SEPTEMBER | KATHMANDU

Days thirteen through fifteen will be designated as rest days to allow all crews to complete the necessary visas and permits required for entry into Tibet. All visitors entering Tibet from Nepal must apply for a Chinese Group Visa and a mandatory Tibet entry permit through the Chinese Embassy in Nepal. Unfortunately, Nepal is the only country where you can obtain these documents. Normally, it takes four working days to process this documentation in the Chinese Embassy (Monday to Friday) in Kathmandu. However, we will use the VIP service to expedite this to 2-3 working days. We will use the downtime in Kathmandu to explore the many historical sites, including the historic plazas of Durbar Square, the Pashupatina temple, and the Bouddha Stupa, which is said to be the burial place of Kassapa Buddha.

MYSTIC KINGDOMS

TIBET

DAYS 16 & 17

SATURDAY 12TH TO SUNDAY 13TH SEPTEMBER | KATHMANDU, TIMURE & SAGA

We will start the day driving on the mountain roads on the outskirts of Kathmandu before heading north along the Pasang Lhamu Highway towards the border town of Timure. On the morning of day seventeen, we will cross the border into Tibet via the Sino-Nepal Friendship Bridge at Gyirong. From Gyirong, we will head north across the vast Tibetan plateau, passing under the shadow of Mount Langbo Kangri and along the shores of Lake Peikucuo before stopping for the night in Saga.

DAYS 18 & 19

MONDAY 14TH TO TUESDAY 15TH SEPTEMBER | SAGA TO DARCHEN

Day eighteen will start with an exhilarating drive west across the untamed wilderness toward the mystical ruins of the lost Kingdom of Guge. Amidst this breathtaking backdrop, we will pause for an alfresco lunch, savouring the delights of Tibetan cuisine under the vast open sky. With spirits soaring, we will set our course eastward towards Darchen. Here, beneath the majestic peaks of the sacred Mount Kailash, we will pitch our tents for two unforgettable nights of camping.

DAY 20

WEDNESDAY 16TH SEPTEMBER | DARCHEN TO YAGRA

On day twenty, we will awaken on the northern shores of Lake Mapang Yongcuo before journeying east along the banks of the Maquan River. The beauty of the Tibetan landscape unfolds as we travel across the plateau toward our overnight stop in Yagra, our spectacular route framed by the towering peaks of the Himalayas.



Route details may be subject to change.



DAYS 23 & 24

SATURDAY 19TH TO SUNDAY 20TH SEPTEMBER | SHIGATSE TO LHASA

From Shigatse, we will head northeast toward the mystical city of Lhasa. Lhasa has been the centre of the Tibetan Buddhist world for over a millennium and is home to the magnificent Potala Palace, a UNESCO World Heritage site. We will have a full day of rest on day twenty-four to explore the city's many sights including the revered Jokhang Temple and the bustling bazaar of Barkhor Street, both of essential stops on our itinerary.

Route details may be subject to change.

DAY 21

THURSDAY 17TH SEPTEMBER | YAGRA TO SAGA

From Yagra, we will follow the Yarlung Zangbo River southeast towards Saga. This fantastic drive across the Tibetan plateau will offer our crews breathtaking views of tranquil marshlands and wild Tibetan animals framed by the glorious mountain peaks of the Himalayas. We will finish at lunchtime on day twenty- one to enjoy an evening of Tibetan hospitality.

DAY 22

FRIDAY 18TH SEPTEMBER | SAGA TO SHIGATSE

We will head east from Saga along a route decorated with colourful Tibetan prayer flags and ancient monasteries. We will stop for lunch in the township of Sangsang before passing along the shores of Lakes Angrenjin and Lang Tso towards our overnight stop in Shigatse. This former seat of the Panchen Lama is famous for its striking buildings, including the Maitreya Chapel, dominated by a 26-meter statue of the Future Buddha.



DAY 25

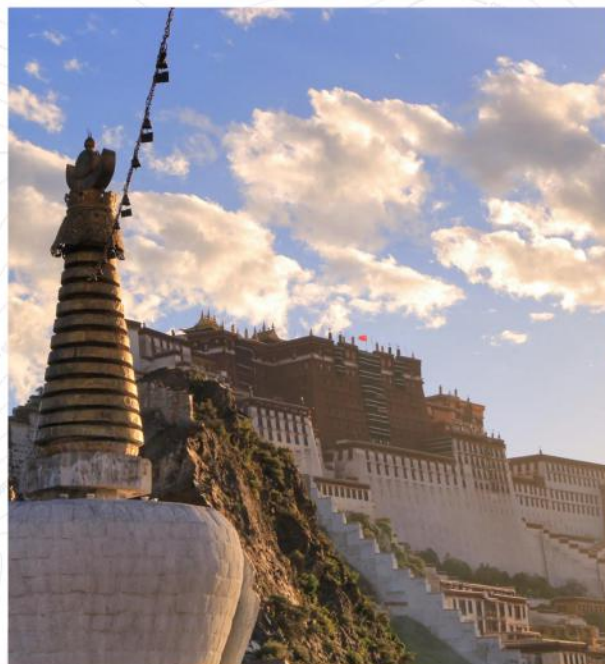
MONDAY 21ST SEPTEMBER | LHASA TO SHIGATSE

The scenery at the beginning of day twenty-five is visually stunning and dramatic. We will head northeast along the banks of the Yarlung Zangbo Jiang River towards Jiangdangxiang, before heading south towards our lunch halt in Gyantse. From Gyantse we will head northwest crossing the Nianchu River the before heading along the Southern Friendship Highway to our overnight halt in Shigatse.

DAY 26

TUESDAY 22ND SEPTEMBER | SHIGATSE TO SAKYA

From Shigatse we will head south along the Sichuan-Tibet Highway towards our overnight stop in Sakya. This ancient pilgrimage route between Sakya Monastery and the holy city of Lhasa is considered to be one of the most beautiful scenic routes in Tibet full of mesmerizing views of the glacial landscape.



DAY 27

WEDNESDAY 23RD SEPTEMBER | SAKYA TO SHELKAR

Day twenty-seven will begin with a journey south towards Rongbuk Monastery. The world's highest monastery offers unrivaled views of Mount Everest's north face and the famous Rongbluk Glacier, the largest of all the hundreds of glaciers formed around Mount Everest. After a light lunch, we will head north to Shelkar, our stop for the night.

DAY 28

THURSDAY 24TH SEPTEMBER | SHELKAR TO GYIRONG

An early start on day twenty-eight will see our crews travel south along the winding Sino-Nepal Friendship Highway. This fantastic road offers a tremendous driving experience as we head towards the border town of Gyirong for a final evening of Tibet hospitality.

Route details may be subject to change.

MYSTIC KINGDOMS

RETURN TO NEPAL

DAYS 29 & 30

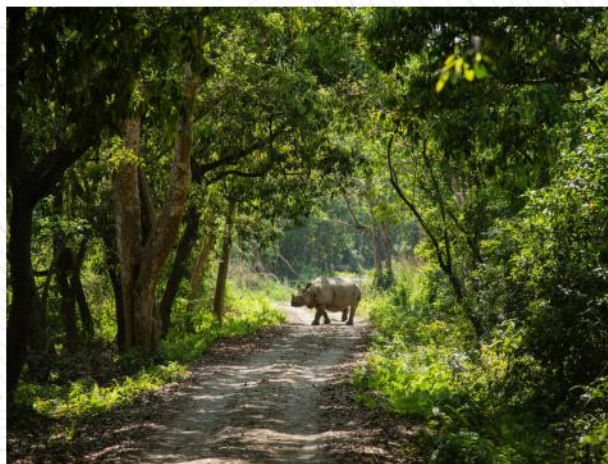
FRIDAY 25TH TO SATURDAY 26TH SEPTEMBER | GYIRONG TO KATHMANDU

On day twenty-nine we will spend the morning crossing the border into Nepal, before heading southwest, stopping for lunch overlooking the Sunkoshi River in the town of Khadichaur. From Khadichaur, we will head south via twisting mountain roads to the outskirts of Kathmandu, our pause for two nights of rest in 5-star luxury.

DAY 31

SUNDAY 27TH SEPTEMBER | KATHMANDU TO CHITWAN

We will leave Kathmandu and head southwest towards Chitwan National Park. This UNESCO World Heritage Site at the foot of the Himalayas is home to one of the last populations of single-horned Asiatic rhinoceros and one of Nepal's last refuges of the Bengal Tiger. Chitwan will be our stop for day thirty-one.



Route details may be subject to change.



DAY 32

MONDAY 28TH SEPTEMBER | CHITWAN TO LUMBINI

Our day begins with a scenic loop around Chitwan National Park, where we experience the pristine wilderness in all its glory. We then cross the Seti Gandaki River via the Pulchowk Narayani Bridge and continue our adventure along winding mountain roads that offer breathtaking panoramic views of the surrounding terrain. We will take a break to enjoy a delicious lunch in the charming town of Bardaghat, situated by the picturesque Binayeeel River. Our journey then takes us westward through enchanting landscapes, leading us to our overnight destination in the ancient city of Lumbini. As the birthplace of Siddhartha Gautama, the Lord Buddha, Lumbini holds profound spiritual significance and is a revered Buddhist pilgrimage site.

MYSTIC KINGDOMS

RETURN TO INDIA

DAY 33

TUESDAY 29TH SEPTEMBER | LUMBINI TO LUCKNOW

From Lumbini, we will head to Sonauli and cross the border into India before heading to our lunch halt at Ayodhya on the banks of the Sarayu River. From Ayodhya, we will head to our overnight stop in Lucknow, the colorful capital city of Uttar Pradesh, famous for its stunning architecture, including the Asfi Mosque, which is part of the beautiful Bara Imambara complex.



DAY 34

WEDNESDAY 30TH SEPTEMBER | LUCKNOW TO AGRA

We will depart from Lucknow, taking the Agra Lucknow Expressway and driving westward to Agra, the historic capital of the Mughal Empire, our final stop on the Mystic Kingdoms challenge.

Route details may be subject to change.



DAY 36

FRIDAY 2ND OCTOBER | AGRA TO DELHI

Our final day starts with a group breakfast before our transportation arrives to take us to Delhi for our onward journeys.

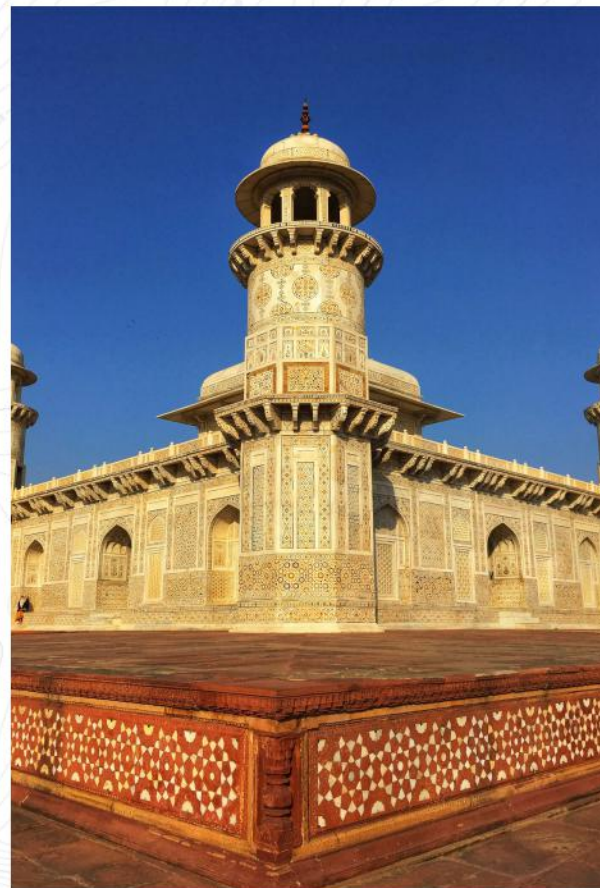
Expect magnificent views, spectacular roads and amazing culinary surprises. We hope you can join us and experience the thrill of driving like never before.

Route details may be subject to change.

DAY 35

THURSDAY 1ST OCTOBER | REST DAY AGRA

Our last day in Agra will be a rest day. In the morning, we will explore the narrow lanes and spice markets of the old city before visiting the UNESCO World Heritage sites at the Taj Mahal and Agra Fort and admire the magnificent architecture of India's largest mosque - the Jama Masjid. The day will end with a gala evening of cocktails and exquisite Mughlai cuisine.





**“WE BELIEVE THE JOURNEY YOU WILL BE
UNDERTAKING IS THE BEST AND MOST CHALLENGING
DRIVE IN THE WORLD. JOIN US AND EXPERIENCE THE
THRILL OF DRIVING LIKE NEVER BEFORE.”**

ENTRY INFORMATION

The Mystic Kingdoms Challenge is a non-competitive long-distance touring event, with an emphasis on exploration and adventure. It is open to participants of all abilities and is ideal for husbands and wives, parents and adult children or groups of friends.

HOSPITALITY

Thirty-five nights' accommodation is included in a shared room (double or twin). Single rooms are available for a supplementary fee but may be limited at some hotels. We aim to provide a mixture of camping along the Tibetan plateau and 4 or 5 star hotels in Nepal, Bhutan and India.

Breakfast, coffee, lunch and dinner are provided throughout the event and any allergies, specific dietary requirements, or religious preferences will be catered for (subject to prior communication).

ELIGIBLE CARS

Any three or four-wheeled vehicle built before December 31, 1999, is eligible for the challenge. However, our aim is to make our challenges accessible to a broader community of motorsport enthusiasts. If you would like to participate with a newer vehicle, we're happy to discuss your options. We can also assist in arranging a local 4x4 rental, subject to availability and additional costs.

TYPES OF ROAD

The Mystic Kingdoms Challenge will take place on a mix of asphalt and gravel terrains. Rougher roads will be avoided wherever possible. However, the mountain routes in Bhutan, Nepal and Tibet can be prone to erosion and landslides and large potholes.

NAVIGATION

The route will predominantly be defined in a detailed tulip Road Book and an overview map of the route will also be provided.

ON EVENT SUPPORT

Although mechanical support will be available throughout the event, the ability to carry out regular maintenance on your own car is essential. Should you need to be transported by truck we will help as much as we can, but all responsibility, including payment, rests with the competitor. We always have at least one doctor or paramedic on our experienced and friendly event team.

INSURANCE AND KEY DOCUMENTATION

Vehicle insurance is not included and whilst many insurers include this kind of event in their classic car policies, some do not. We strongly recommend you also have adequate travel, medical, breakdown and cancellation insurance to cover you from as soon as you enter the event. You do not need any kind of competition licence, a full driving licence that is valid in Europe is enough.

We advise you to make sure you have the necessary visa/s for the country / countries that we are visiting.

FURTHER INFORMATION

If you require any further information or advice please contact us via email at info@regularity.co.uk.

READY FOR AN ADVENTURE?

ENTRY FEE FOR ONE CAR

£49,950*

INCLUSIONS & EXCLUSIONS

INCLUDED IN THE CHALLENGE

- ⌚ Unique experiences, hand-picked by our expert team
- ⌚ 35 nights accommodation during the event
- ⌚ Daily breakfast, lunch, coffee halts and evening meal
- ⌚ Gala evening, drinks and dinner
- ⌚ Event roadbook, maps and guidance
- ⌚ Rally plates and decals
- ⌚ Mechanical and medical support
- ⌚ Dedicated 24/7 team providing in-country support and guidance

EXCLUSIONS

- ⌚ Flights
- ⌚ Vehicle shipping costs to and from the event
- ⌚ Personal insurance
- ⌚ Visas
- ⌚ Personal drinks
- ⌚ Fuel/vehicle repairs/tolls and any other costs

HOW TO ENTER

Email us at info@regularity.co.uk to secure your place, or visit us at www.regulaity.co.uk using the QR code below:



*Based on a crew of two people sharing hotel rooms. If you would like the privacy of a private room throughout your trip please select this upgrade option when completing the event application form. Please note, an additional single supplement cost will be chargeable for this upgrade.

