

Stimulate
HAIR TOPPER



VOLU
MIZ
ER

CARUSO
lightchampagne rooted

[de]

Eine moderne Haarfaser mit vielseitigen Eigenschaften. High-Heat-Hair ist eine hitzebeständige Faser, die sich variabel stylen und thermisch umformen lässt. Das Haar ist in einer großen Auswahl natürlicher Farben erhältlich. Durch seine Variabilität, genügt Hi Heat den allerhöchsten Ansprüchen.

[fr]

Une fibre capillaire moderne aux propriétés polyvalentes. High-Heat-Hair est une fibre résistante à la chaleur qui peut être coiffée et thermoformée de différentes façons. Les chevelures sont disponibles dans une large gamme de couleurs naturelles. Grâce à sa flexibilité, la fibre Hi Heat répond aux demandes les plus exigeantes.

[es]

Una fibra capilar moderna con propiedades versátiles. La fibra High-Heat-Hair es una fibra resistente al calor que se puede peinar y remodelar térmicamente de forma variable. El cabello está disponible en una amplia gama de colores naturales. Gracias a su variabilidad, la fibra Hi Heat satisface las más altas exigencias.

[en]

A modern hair fibre with versatile properties. High-Heat-Hair is a heat friendly fibre that can be styled in many ways and thermally reshaped. The hair is available in a wide range of natural colours. Due to its flexibility, Hi Heat meets the highest demands.

[it]

Una moderna fibra estremamente versatile. La fibra High-Heat è una fibra termoresistente, che può essere acconciata e lavorata con il calore. I modelli sono disponibili in un'ampia varietà di tonalità naturali. Grazie alla sua versatilità, questa fibra soddisfa anche le clienti più esigenti.

[ru]

Современное волосяное волокно с универсальными свойствами. High-Heat-Hair – это термостойкое волокно, которое можно термически укладывать и придавать желаемую форму. Волокна доступны в широком диапазоне натуральных цветов. Благодаря своей вариативности Hi Heat отвечает самым высоким требованиям.



HIGH HEAT FIBER



HIGH HEAT
FIBER



callas

HIGH HEAT FIBER

espresso mix • darkchocolate mix • chocolate rooted • mocca rooted • lightbernstein rooted •
sandmulti rooted • sandyblonde rooted • pearlblonde rooted • **champagne rooted**



Hair length: 12 – 23 cm
Size: 29x23 cm





HIGH HEAT
FIBER



warhol

HIGH HEAT FIBER

espresso mix • darkchocolate mix • chocolate mix • mocca rooted • bernstein rooted • caramel mix •
sandyblonde rooted • pearlblonde rooted • auburn rooted



Hair length: 18 – 29 cm
Size: 18 x 17 cm





HIGH HEAT
FIBER



piaf

HIGH HEAT FIBER

espresso mix • darkchocolate mix • **chocolate mix** • mocca rooted • lightbernstein rooted • sandmulti rooted • sandyblonde rooted • champagne rooted • auburn rooted • pearl rooted • white mix



Hair length: 12 – 24 cm
Size: 13 x 6 cm





HIGH HEAT
FIBER



munch

HIGH HEAT FIBER

espresso mix • darkchocolate mix • chocolate mix • mocca mix • bernstein rooted • sand mix •
sandyblonde rooted • **pearlblonde mix** • champagne mix • silver mix



Hair length: 23 – 24 cm
Size: 8 x 14 cm





HIGH HEAT
FIBER



munch long

HIGH HEAT FIBER

espresso mix • darkchocolate mix • chocolate mix • mocca mix • bernstein rooted • **sand mix** •
sandyblonde rooted • pearlblonde mix • champagne mix



Hair length: 38 – 40 cm
Size: 8 x 14 cm





HIGH HEAT
FIBER



caruso

HIGH HEAT FIBER

espresso mix • darkchocolate mix • chocolate rooted • mocca rooted • bernstein rooted • sand rooted •
sandyblonde rooted • **lightchampagne rooted** • salt/pepper mix • silver mix



Hair length: approx. 40 cm
Size: 16 x 14 cm



[de]

Eine unkomplizierte Kunsthaarfaser mit unzähligen Möglichkeiten. Synthetic Hair ist pflegeleicht und ready-to-wear, sprich es ist von Haus aus optimal in Form und behält diese auch nach dem Waschen bei. Die Faser sieht vollkommen natürlich aus und ist in vielen Farben erhältlich.

[fr]

Une fibre capillaire de synthèse innovante aux multiples possibilités. La fibre de synthèse est facile à entretenir et prête à porter. Elle conserve ainsi sa forme initiale même après le lavage. Une fibre à l'aspect parfaitement naturel et disponible dans de nombreux coloris.

[es]

Una fibra capilar sintética sin complicaciones con innumerables posibilidades. El cabello sintético es fácil de cuidar y está listo para usar, es decir, tiene una forma óptima por naturaleza que conserva incluso después de los lavados. La fibra tiene un aspecto totalmente natural y está disponible en muchos colores.

[en]

An uncomplicated synthetic hair fibre with countless possibilities. Synthetic Hair is easy to care for and ready-to-wear. It has an optimal shape and retains it even after washing. The fibre looks completely natural and is available in many colours.

[it]

Una fibra facile da trattare, che offre molte possibilità. La fibra sintetica è di facile manutenzione e pronta per essere indossata: mantiene la sua forma ottimale anche dopo il lavaggio. La fibra ha un effetto estremamente naturale ed è disponibile in molti colori.

[ru]

Неприхотливое синтетическое волокно с бесчисленными возможностями. Синтетические волосы просты в уходе и готовы к носке, т. е. имеют идеальную форму и сохраняют ее даже после мытья. Волокно выглядит очень естественно и доступно во многих цветах.

SH

SYNTHETIC
HAIR

SH
SYNTHETIC
HAIR



degas

espresso mix • chocolate mix • bernstein mix • sand mix • caramel mix • **champagne mix** •
smoke mix • snow mix • silver mix



Hair length: 12 – 14 cm
Size: 17 x 16 cm



SH
SYNTHETIC
HAIR



dürer

chocolate mix • mocca mix • bernstein mix • **darksand mix** • sand mix • champagne mix •
salt/pepper mix • smoke mix • pearl mix • snow mix



Hair length: 9 – 10 cm
Size: 29 x 22 cm



SH
SYNTHETIC
HAIR



klimt

espresso mix • chocolate mix • nougat rooted • mocca rooted • **bernstein rooted** • caramel rooted •
champagne rooted • stonegrey mix • silver mix



Hair length: 10 – 12 cm
Size: 17 x 16 cm



[de]

Echthaar garantiert ein höchstes Maß an Natürlichkeit und Qualität. Bei der Stimulate-Collection kommt ausschließlich hochwertiges Echthaar zum Einsatz. Dieses bietet langanhaltenden Glanz, samtweiche Geschmeidigkeit und lässt sich sehr individuell stylen. Echthaar steht für natürlichen Luxus und Spitzenkomfort.

[fr]

Le cheveu naturel garantit un excellent niveau de qualité et un effet très naturel. Dans la collection Stimulate tous nos modèles se composent exclusivement de cheveux naturels de qualité supérieure. Ils offrent un choix de couleurs éclatantes, d'un toucher ultra-soyeux qui peuvent se transformer selon les personnalités. Le cheveu naturel reste synonyme de luxe et de confort à l'état pur.

[es]

El cabello natural garantiza un excelente grado de calidad y naturalidad. En nuestra colección Stimulate, el cabello natural utilizado es de alta calidad. Éste ofrece un color luminoso duradero, así como un tocado muy suave que se puede peinar de manera individual. El cabello natural luce un confort máximo y un lujo natural.

[en]

Human hair guarantees the highest degree of naturalness and quality. Only high-quality human hair is used in the Stimulate collection. It offers long-lasting shine, velvety softness and can be styled very individually. Human hair stands for natural luxury and top comfort.

[it]

Il capello vero è garanzia di alti standard di naturalezza e qualità. Nella collezione Stimulate viene utilizzato esclusivamente capello di altissimo livello. Questo capello garantisce durevole brillantezza, setosa morbidezza e si lascia modellare per personalizzare ogni stile. Il capello vero è l'emblema del lusso naturale e del comfort di prima classe.

[ru]

Натуральные волосы это гарантия высшей степени естественности и качества. В коллекции Stimulate применяются только высококачественные натуральные волосы. Это обеспечивает стойкий блеск, шелковистость и мягкость, а также позволяет укладывать их согласно индивидуальным пожеланиям. Натуральные волосы – это естественная роскошь и максимальный комфорт.



HUMAN HAIR



HUMAN
HAIR



corelli

FINEST HUMAN HAIR

espresso mix • darkchocolate mix • chocolate mix • mocca mix • **lightbernstein rooted** •
sandyblonde rooted • champagne mix



Hair length: 20 – 23 cm
Size: 14 x 17 cm





HUMAN
HAIR



renoir

REMY HUMAN HAIR

espresso mix • darkchocolate mix • **chocolate mix** • mocca mix • sand mix •
sandyblonde rooted • champagne rooted



Hair length: 32 – 36 cm
Size: 16 x 17 cm





HUMAN
HAIR



dali

REMY HUMAN HAIR

espresso mix • **darkchocolate mix** • chocolate mix • mocca mix • bernstein mix • sand mix •
sandyblonde rooted • champagne rooted



Hair length: 26 – 28 cm
Size: 8 x 13 cm





HUMAN
HAIR



kleee

REMY HUMAN HAIR

espresso mix • darkchocolate mix • chocolate mix • mocca mix • bernstein mix • **sand mix** •
sandyblonde rooted • champagne rooted



Hair length: 9 – 14 cm
Size: 29 x 24 cm





rubens

REMY HUMAN HAIR

espresso mix • darkchocolate mix • chocolate mix • nougat rooted • **mocca mix** • lightbernstein rooted • sandyblonde mix • champagne rooted



Hair length: 30 – 32 cm
Size: 16 x 17 cm



top waves





[de]

Lust auf lässige Locken? Einen femininen langen Look? Oder wundervoll gewelltes Haar? Die Volumizer von Stimulate verhelfen Ihnen zu der Fülle, Länge und Struktur, die Sie sich wünschen.

[en]

Fancy some casual curls? A womanly long-haired look? Or a wonderful wavy style? The Volumizers by Stimulate help you to achieve the volume, length and texture you desire.

[fr]

Une envie de jolies boucles ? D'une longue coupe féminine ? Ou bien d'une magnifique chevelure ondulée ? Les volumateurs de Stimulate sont la solution pour vous procurer la densité, la longueur et la structure de vos rêves.

[es]

¿Quieres rizos casuales? ¿Un look femenino de cabello largo? ¿O un cabello ondulado magnífico? Los voluminizadores de Stimulate te permiten tener la densidad, longitud y estructura que te apetezca.

top volume





[de]

Zuschneiden auf Wunsch. Stylen nach Ihren Vorstellungen. Die Hair Pieces von Stimulate stehen für Vielseitigkeit, flexible Frisuren und Volumen.

[en]

Cut as you wish. Style according to your ideas. Hair pieces by Stimulate represent versatility and voluminous, flexible hairstyles.

[fr]

À recouper selon vos désirs. À styler selon vos attentes. Les compléments capillaires de Stimulate vous permettent d'obtenir du volume, un coiffage à la carte et de multiples variations.

[es]

Cortar según tus necesidades. Peinar según tus preferencias. Las soluciones capilares de Stimulate brindan versatilidad, peinados flexibles y con volumen.



high heat fiber

06



callas ★★★★★☾

espresso mix • darkchocolate mix • chocolate rooted • mocca rooted • lightbernstein rooted • sandmulti rooted • sandyblonde rooted • pearlblonde rooted • **champagne rooted**

Length: 12–23 cm
Size: 29 x 23 cm

14



munch long ★★★★★☾

espresso mix • darkchocolate mix • chocolate mix • mocca mix • bernstein rooted • **sand mix** • sandyblonde rooted • pearlblonde mix • champagne mix

Length: 38–40 cm
Size: 8 x 14 cm

16



caruso ★★★★★

espresso mix • darkchocolate mix • chocolate rooted • mocca rooted • bernstein rooted • sand rooted • sandyblonde rooted • **lightchampagne rooted** • salt/pepper mix • silver mix

Length: approx. 40 cm
Size: 16 x 14 cm

10



piaf ★★★★★

espresso mix • darkchocolate mix • **chocolate mix** • mocca rooted • lightbernstein rooted • sandmulti rooted • sandyblonde rooted • champagne rooted • auburn rooted • pearl rooted • white mix

Length: 12–24 cm
Size: 13 x 6 cm

12

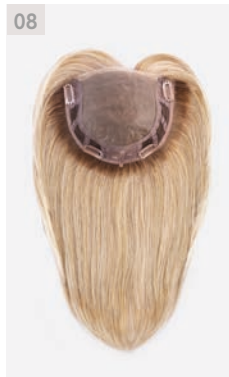


munch ★★★★★☾

espresso mix • darkchocolate mix • chocolate mix • mocca mix • bernstein rooted • sand mix • sandyblonde rooted • **pearlblonde mix** • champagne mix • silver mix

Length: 23–24 cm
Size: 8 x 14 cm

08



warhol ★★★★★☾

espresso mix • darkchocolate mix • chocolate mix • mocca rooted • bernstein rooted • caramel mix • **sandyblonde rooted** • pearlblonde rooted • auburn rooted

Length: 18–29 cm
Size: 18 x 17 cm

human hair

28



corelli ★★★★★

espresso mix ▾
darkchocolate mix ▾
chocolate mix ▾ mocca mix ▾
lightbernstein rooted ▾
sandyblonde rooted ▾
champagne mix

Length: 20–23 cm
Size: 14 x 17 cm

30



renoir ★★★★★

espresso mix ▾ darkchocolate
mix ▾ **chocolate mix** ▾
mocca mix ▾ sand mix ▾
sandyblonde rooted ▾
champagne rooted

Length: 32–36 cm
Size: 16 x 17 cm

32



dali ★★★★★

espresso mix ▾
darkchocolate mix ▾
chocolate mix ▾ mocca mix ▾
bernstein mix ▾ sand mix ▾
sandyblonde rooted ▾
champagne rooted

Length: 26–28 cm
Size: 8 x 13 cm

36



rubens ★★★★★

espresso mix ▾ darkchocolate
mix ▾ chocolate mix ▾
nougat rooted ▾ **mocca mix** ▾
lightbernstein rooted ▾
sandyblonde mix ▾
champagne rooted

Length: 30–32 cm
Size: 16 x 17 cm

34



klee ★★★★★

espresso mix ▾ darkchocolate
mix ▾ chocolate mix ▾
mocca mix ▾ bernstein mix ▾
sand mix ▾ sandyblonde
rooted ▾ champagne rooted

Length: 9–14 cm
Size: 29 x 24 cm

VOLU
MIZ
ER

synthetic hair

colours

20



degas ☆☆☆☆

espresso mix • chocolate mix • bernstein mix • sand mix • caramel mix • **champagne mix** • smoke mix • snow mix • silver mix

Length: 12–14 cm
Size: 17 x 16 cm

22



dürer ☆☆☆☆☾

chocolate mix • mocca mix • bernstein mix • **darksand mix** • sand mix • champagne mix • salt/pepper mix • smoke mix • pearl mix • snow mix

Length: 9–10 cm
Size: 29 x 22 cm

24



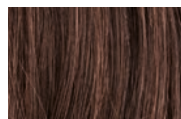
klimt ☆☆☆☆☾

espresso mix • chocolate mix • nougat rooted • mocca rooted • **bernstein rooted** • caramel rooted • champagne rooted • stonegrey mix • silver mix

Length: 10–12 cm
Size: 17 x 16 cm



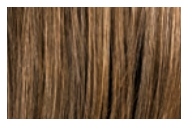
espresso
2.4



darkchocolate
6.33.4



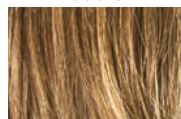
chocolate
830.6



nougat
12.8.20



mocca
830.27.12



bernstein
12.26.19



lightbernstein
12.26.27



darksand
12.20.22



sandmulti
14.22.12



sand
14.26.12



caramel
20.26.14



sandyblonde
20.22.14



pearl
101.20.25



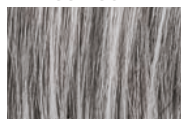
champagne
22.26.20



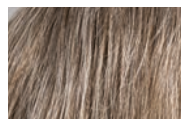
lightchampagne
23.25.24



auburn
33.130.4



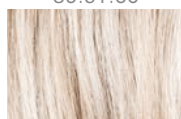
salt/pepper
39.51.60



smoke
48.38.36



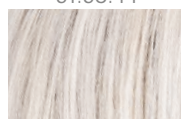
stonegrey
51.58.44



pearl
101.14



snow
60.56.58



silver
60.56



white
60

colours

MIX

Modische Farbmischung und Strähnung
Fashionable colour blend and high/lowlights
Effet méché dans des coloris tendance
Miscela di tonalità diverse alla moda
Mezcla de colores y mechas de moda
Модный микс цветов и мелирование

ROOTED

Natürliche Ansatzfarbgebung
Naturally rooted colours
Effet racine dans un ton plus foncé
Effetto ricrescita: la base delle meche è scura
Raíz naturalmente más oscura
Эффект отросших корней

quality

☆☆☆☆☆

100 % handgeknüpft
100 % handmade
100 % fait main
100 % fatta a mano
100 % anudada a mano
100 % ручная работа

☆☆☆☆

Monofilament + Tresse
Monofilament + wefted
Monofilament + tresse
Monofilamento + annodatura a macchina
Monofilamento + tejida a máquina
Монофиламент + трессы

☾

Filmansatz
Lace front
Tulle cinéma
Tulle cinema
Tul frontal
Невидимая фронтальная линия

☾☾

Verlängerter Filmansatz
Extended lace front
Bordure invisible extra-longue
Tulle cinema prolungato
Tul frontal alargado
Удлиненная фронтальная линия

VO
LU
MIZ
ER



Stimulate
HAIR TOPPER