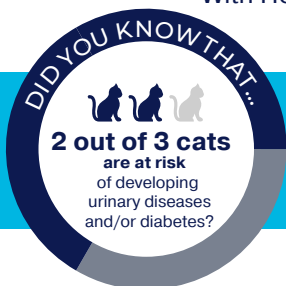


NEW!

ODOURLOCK[®] maxCare

With Health Indicator



Is your cat at risk??

Blood and glucose in the urine are indicators of urinary disease and diabetes respectively. OdourLock[®] maxCare[™] contains patented Blücare[®] technology that detects the presence of blood and glucose in urine.

Be proactive with your cat's health and well-being by using OdourLock[®] maxCare[™], the ultra-premium clay litter with feline health issues indicators.

You don't need
to be a vet
to read these
results!



NORMAL



CAUTION



HEALTH ISSUE



5 in 1

- Health Indicator
- Blocks Ammonia
- Ultra Clumping
- Dust Free
- No Tracking

- + Easy to use
- + Fast & visible results
- + Non-invasive and stress-free for the cat
- + Reliable, patented technology

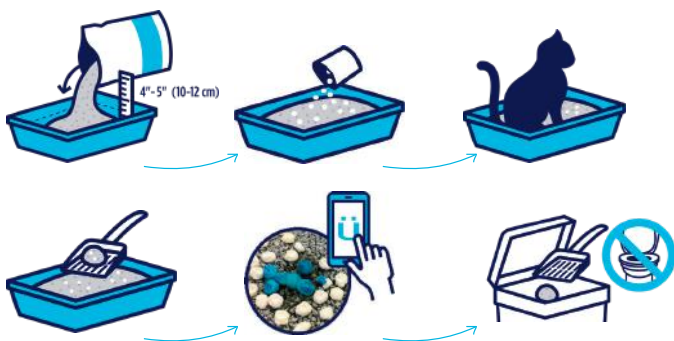


ODOURLOCK. maxcare

Instructions for use

- Pour 10 to 12 cm of litter into an empty, dry tray.
- Spread the bag of Blücare® granules evenly over the litter.
- Remove urine and faeces clumps daily with a litter scoop.
- Wait 2 minutes after urine has come into contact with the granules, then observe the result. If the granules are WHITE or YELLOW, the test is negative. If they are BLUE, the test is positive: Blücare® has detected blood or glucose in your cat's urine. Contact your vet for further tests.

Do not flush granules or litter down the toilet. Change the litter and clean the tray every 40 days. Test results may vary according to conditions of use and other factors such as the cat's diet and medication*.



Important:

OdourLock® maxCare™ detects blood and glucose in cat urine. It is not a therapeutic product, and should not be used to diagnose, treat, mitigate, or prevent a health problem with your cat.

OdourLock® maxCare™ should never be used as a replacement for proper veterinary care. Regardless of the results obtained using OdourLock® maxCare™, consult your veterinarian if your cat demonstrates any abnormal signs.

Storage:

Store in a dry place away from direct sunlight. Keep out of reach of children. OdourLock® maxCare™ has been tested by veterinarians. Safe and non-toxic for animals and humans in normal use conditions.

* Up to 30 days continuous monitoring

