

# Winchelsea Star

Price \$1



Your Weekly Community Newspaper

Since 1977

Vol 46 Ed 20

Tuesday 30 May 2023

[winchelseastar.org.au](http://winchelseastar.org.au)



## SHED Talks add to Surf Coast Arts Trail lead-up.

More page 9



## Winchelsea Star

Articles are most welcome and must carry the name and address of the sender.

### Weekly deadline is 5pm Friday.

Copy for sports results and weekend events is Sunday 6pm (4pm for hard-copy articles/results left at IGA) unless by prior arrangement.

Copy should be emailed to [news@winchelseastar.org.au](mailto:news@winchelseastar.org.au) or left at IGA Supermarket.

The Winchelsea Star reserves the right to edit or not publish any article.

Views expressed are not necessarily those of the Winchelsea Star or its Committee.

500 online subscribers, 250 copies printed for outlets around Winchelsea.

Free subscription to digital version at [winchelseastar.org.au](http://winchelseastar.org.au)

© Winchelsea Star Org. Inc.  
All rights reserved.

Winchelsea Star Organisation Inc.  
Reg. No. A1479, ABN: 57 207 411 958  
[winchelseastar.org.au](http://winchelseastar.org.au)  
Po Box 5, Winchelsea, Vic, 3241

#### Editors:

Cerrie Fogan, Yvonne Stevens  
Judy Cameron  
[editor@winchelseastar.org.au](mailto:editor@winchelseastar.org.au)

#### Advertising:

Sasha Gauntlett and Neil McInnes  
[advertising@winchelseastar.org.au](mailto:advertising@winchelseastar.org.au)  
0408 102 802

#### Layout/Sub Editors:

Susan Corby, Stuart Fountain  
[production@winchelseastar.org.au](mailto:production@winchelseastar.org.au)

#### Committee

**President:** Mick O'Mara  
[president@winchelseastar.org.au](mailto:president@winchelseastar.org.au)

**Treasurer:** Cathy Cheadle  
[treasurer@winchelseastar.org.au](mailto:treasurer@winchelseastar.org.au)

**Secretary:** Tony Phelps  
[secretary@winchelseastar.org.au](mailto:secretary@winchelseastar.org.au)

#### Committee Members:

Linda Carter

Printer: Mud Group

Website: Winch Websites



# Green light for Winchelsea Mud Hut renewal design and construction

Renewal of Winchelsea's riverside Mud Hut shelter will proceed following community endorsement of revised concept designs.

Surf Coast Shire Council resolved at its May meeting to formally adopt the designs developed by a community led Project Control Group and to allocate \$80,000 from its Open Space Reserve Fund to the project.

The move follows public consultation which found 63 per cent of respondents satisfied or very satisfied with how the design responded to feedback from an earlier petition.

Plans for the shelter include low-profile walls, added timber cladding and design elements reminiscent of the existing hut. The shelter also includes picnic tables and seating.

"We are really pleased to be issuing a green light for construction and look forward to working further with Winchelsea community to get it built for the enjoyment of locals and the many visitors who stop to enjoy the area," Mayor Liz Pattison said.

"We acknowledge and specially thank the members of the Project Control Group

who did such a great job reworking the original designs, based on community feedback.

"This project has demonstrated the importance and value in having community lead the way and we thank community members who have provided input, including during our recent public consultation on the updated plans."

The new shelter was scheduled for installation mid-January 2023 but pandemic restrictions, contractor unavailability, extended community consultation through the Project Control Group and discovery of microbats breeding in the existing structure have contributed to project delays.

Council engaged a zoologist to assess the microbats and provide advice on how to manage them. The microbats have been found to have moved on, but Council will continue to work with the zoologist should any return during demolition of the structure.

Demolition of the existing hut will start as soon as possible.

The project budget of \$265,000 is jointly funded by Council and the Australian Government, through a \$50,000 allocation from its Local Roads and Community Infrastructure Program.



**HESSE  
RURAL  
HEALTH**

## Volunteers Required

- Bus Driver & Outings Assistant
- Appointments Escort
- Resident Visitor
- Social Support Activities
- Events and Activities Assistant
- Gardening - Winchelsea
- Group Wheelchair Walks Assistant

Volunteers are essential to our aged care system, supporting the wellbeing of older people in their homes and in residential settings





For more information please contact Jessica Culhane, Communications and Community Partnership Officer via phone on [031 5267 3200](tel:03152673200) or via email [jculhane@hesse.vic.gov.au](mailto:jculhane@hesse.vic.gov.au)



# Feedback invited on proposed updates to Community Amenity Local Law

Surf Coast Shire Council’s Community Amenity Local Law is being reviewed and residents are invited to provide feedback on some proposed updates.

The proposed updates include:

- Allowing people over six years of age to enter a Council facility intended for use by persons of the opposite gender, improving accessibility for families and carers. This measure will also improve access and inclusion for gender-diverse community members.
- Aligning the definition of ‘smoke’ with the Tobacco Act, which includes e-cigarettes and vapes.
- Extending provisions for camping and temporary accommodation and keeping of animals to support people displaced by family violence.

- Including Council’s Nature Strip Guidelines as an incorporated document to facilitate enforcement of these guidelines.

Mayor Liz Pattison said the proposed updates help the Local Law meet legislative requirements at the same time as promoting inclusion and providing support for members of the community.

“The proposed update to allow people who identify as non-binary or gender diverse to use facilities that are appropriate for them, is part of Council’s Gender and Equity Impact Assessment work, and can help foster more inclusive facilities,” she said. “This change would allow a mother to take her seven-year-old son in to the female toilets with her or a father to take his daughter with him.

“While we wouldn’t expect to see major changes to the way the majority of people use our public toilets, if people

do have any concerns about the proposed update, I encourage them to provide feedback.”

Mayor Pattison said the overall review aimed to ensure the Local Law remained timely and relevant.

“The proposed changes that support people displaced by family violence are important as Council continues to look for ways to support some of our most vulnerable community members,” she said.

“We resolved on a targeted review of the Community Amenity Local Law to make sure that it is up to date and effective.”

The proposed changes to the Community Amenity Local Law will be available in full and feedback will be welcomed via [surfcoast.vic.gov.au/ CALL2023](http://surfcoast.vic.gov.au/CALL2023). Feedback is open between 26 May and 24 June.

## Winchelsea Football Netball Club Inc

# Blues News



Janet Fletcher

Welcome to Blues News where the weekend was the second of a split Round giving the Winchelsea Football & Netball Club players, coaches and volunteers a break from game day commitments.

This week sees the Blues back in action hosting Thomson who are travelling well in both Football & Netball. Starting times are as usual the Reserves kicking off at 12 midday, followed by the Seniors at 2pm.

### Auskick:

Winchelsea Auskick will be happening as usual 5 – 6pm on Thursday, as will the Under 10’s training session. Parental input has been terrific with both of these Junior Football groups this season. Already there is talk of next years development within the Junior ranks which is great !!

### Blue’s Bistro:

This week our menu will consist of ROAST PORK, back by popular demand. CURRIED SAUSAGES - served with either salad or vegetables /

chips. FLATHEAD TAILS – also served with chips and salad / vegetables.

Apologies for the very few servings of Mary’s very popular Battered Fish last week – we cannot serve what has been ordered - unfortunately not delivered. Thank you for your understanding when this sort of “stuff” happens as it seems to these days!

DESSERT: - yet to be announced ....

All at the Club hope to see Norm Banham back hard at work for the Blue’s Bistro this week after having been unwell of late.

**Go Blues!!**



# Speeding? Significant fines apply.

If you speed, you can expect a minimum fine of \$231 and 1 demerit point. Police and speed cameras can be anywhere, so why take the risk? Chances are you will be caught.

Anywhere. Anytime. Anyone.

**TAC**

**VICTORIA**  
State  
Government



# Life is so good

I have just finished reading a beautiful book, "Life is so good". It is a biography on the life of George Dawson, a descendant of the American Slave trade. George was born in 1898 and lived most of his life in Texas where his father had a small farm.

At the time he was born there was very little opportunity for Black Americans to attend school, especially in the South. Consequently George didn't learn to read until he was 98!

Back then racial discrimination was rampant in the southern states of the USA, (and probably still is today).

Right through his book George mentions the discrimination that he faced but does it without any rancour. He was happy to be alive.

Reading his life story drew my attention to the difficulties faced by non-readers. I had a relative who had a literacy problem. Some how or another he managed to get his car driver's licence. He then bought a truck that needed a heavy vehicle licence. He couldn't read the questions required for a truck licence so, if he was pulled over for a licence check, he didn't have his licence with him and had to take it in to a Police

station. He would take his car licence in and was not queried about a Heavy Vehicle licence. Then he was pulled over up-country by a Vicroads officer. He didn't have a log book as you need a Heavy Vehicle licence to get a one!

My relative went into panic mode. How could he read the Question Sheet required for a Heavy Vehicle licence. To help I made a recording of the questions and answers. He memorised everything! When he went for his test he asked for an oral test and passed no problems.

Have we anyone in our community who has a reading problem? If so how can we help them? Most probably some one with a reading problem would not be reading the Winch Star. If you know some one with a reading problem suggest to them they contact me and, in conjunction with Winch House, we will see if we can get a Seniors' reading program going.

Mick O'Mara - 0427 672295



Thursday, 15 June 2023 | 07:00 PM

We've got the wine, you bring the cheese...

...bring along your own picnic to enjoy during the show.

Tickets at [copacc.com.au](http://copacc.com.au) or at the Box Office

and on 03 5232 2077



52672192 **R & K Creative Framing**  
for all your framing needs

free quotes  
pension discount  
specialist in Age & Disability Modifications

Ray & Kim Jansen  
10 Witcombe st  
Winchelsea 3241

Ray The Home  
Maintenance HANDYMAN  
abn 47928623462

0414672192

**MAKE'N'BREAK MOSAICS**  
Based in Gherang

Workshops & Private Classes

Learn how to seal, cut, lay tiles & glass and grout

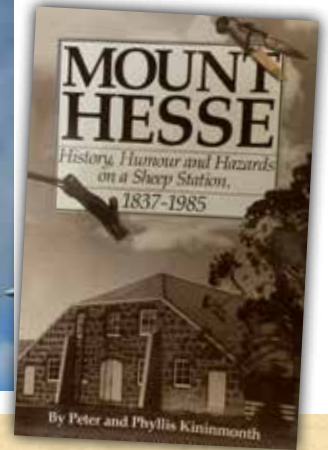
Pick a design from Donna or bring your own!

Call or Email Donna  
0414 945 364  
[make.n.break@outlook.com](mailto:make.n.break@outlook.com)



# Winchelsea Historical Society Winchelsea Street Names

George Brooks Legrew Hesse was a lawyer in Tasmania who joined Gellibrand on his ill fated trip looking for new farming lands on mainland Australia.



*At Mount Hesse*



Mount Hesse was actually a low-lying hill located some eight miles due west of Geelong and near where the town of Winchelsea is today. It was named after the Vandemonian barrister George Brooks Legrew Hesse who, together with his friend Joseph Tice Gellibrand, disappeared in the area in 1837 while on a trip of exploration from Point Henry to Corio Bay. The land surrounding the Mount was then a windswept and largely grassy plain with a few spindly honeysuckle and acacia trees clustered near the hill's summit. The verdure was mainly kangaroo grass, growing in clumps between the honeycombed rocks that dotted the landscape, with silver tussock covering the lower-lying and, in the winter months, swampy creek beds. Considered ideal for grazing sheep, the area was first leased for this purpose by John Highett in the same year Hesse and his colleague went missing. In around 1842 the lease to Highett's 67,000-acre run was transferred to William Harding who 'afterwards got rather deeply involved in the books' of the Geelong merchant William Timms (George Russell cited in Brown: 1935: 219). Timms took over the lease and, in December 1853, divided the property into the Mount Hesse and the Mount Hesse No 1 stations.

# Closed to Hunting

Lake Bookar State Game Reserve and Lake Elizabeth State Game Reserve closed to hunting.

Lake Bookar State Game Reserve, north of Camperdown, is closed to hunting from Saturday, 20 May 2023 to prevent disturbance to significant numbers of threatened Hardhead ducks.

On 10 May 2023, a survey of Lake Bookar detected more than 1,300 threatened Hardhead ducks.

Signs will be installed at Lake Bookar alerting hunters to the closure and Authorised Officers will patrol the wetland to ensure compliance.

Lake Elizabeth State Game Reserve, near Kerang, is closed to hunting from Saturday, 27 May 2023 to prevent disturbance to significant numbers of threatened Blue-winged Shoveler.

On 24 May 2023, a survey of Lake Elizabeth detected a significant number of Blue-winged Shoveler.

Signs will be installed at Lake Elizabeth alerting hunters to the closure and Authorised Officers will patrol the wetland to ensure compliance with the closure.

To see which wetlands are closed or partially closed to hunting for the 2023 duck season, visit Wetland Closures – 2023 duck season.

Wetlands will continue to be monitored throughout the season. Hunters are reminded to check the GMA website regularly for updates.

Report illegal hunting and breaches to public safety laws to the GMA, visit Report Illegal Hunting or call 136 186.

Hunters are reminded that the hunting start time is 8am for every day of the 2023 duck season which closes on 30 May.

IDEAS  
MAKING  
ACTIVITY  
CONVERSATION  
DEMONSTRATION  
GENERATION

HINTERLAND ART SCHOOL  
WINCHELSEA

Unwind, look and learn  
**PRINTMAKING**

Louise Hall BA Hons Fine Art RMIT  
TAE Training and Assessment

Learn printing skills and explore printing methods  
with Louise Hall.

Using specialised equipment enjoy  
producing beautiful, finished artwork.  
Create editions of your prints or individual  
one-off artists' proofs.

A highlight of these workshops will be  
specialised hand colouring in watercolour  
and gouache of the finished prints.

Fully equipped studio in a delightful  
garden setting with all your art-making  
needs.

**SUITABILITY**  
All levels of experience and abilities.  
Technically informative, providing skills,  
individuals progress in their own  
preferred direction.

**LEARN**  
Mono printing  
Dry point/etching  
Lino cut printing

**TERM 2**  
**PRINTMAKING**  
Wednesdays 1.30-3.30pm  
June 14, 21, 28  
July 5, 12  
5 classes \$275  
• All materials included  
• Four students per class  
• Location provided upon booking

Enrol here

hinterlandartschool@gmail.com | Insta @hinterlandartschool | 0493 479 447

# Barwon Water News

Late last month on the Bellarine, we were delighted to welcome more than 70 community members to take a look at the decommissioned Bellarine Basin site where we are working with Traditional Owners, Bellarine Catchment Authority and other partners to create a new environmental and community open space.

We're commencing our upgrade of Birregurra's drinking water supply this month by constructing a new underground pipeline to connect Birregurra to the Colac water supply system.

Finally, please swing by to see our fabulous projections from the Ryrie Street forecourt during Reconciliation Week. We're thrilled to be showing the incredible artwork of First Nations artists mentored by The Torch.

Best wishes for May.  
Tracey Slatter  
Managing Director

## Birregurra Water Supply upgrade starts

We're upgrading Birregurra's drinking water supply by constructing a new underground pipeline to connect Birregurra to the Colac water supply system. The upgrade will ensure we can continue to provide high quality, affordable and secure services for our existing customers, and cater for future growth.

Construction is scheduled to commence this month and be completed by mid-2024. Works will take place between Forrest Street in Colac, and Bowden Street in Birregurra.

Should you have any questions about this project, please contact us on 1300 656 007, email [projects@barwonwater.vic.gov.au](mailto:projects@barwonwater.vic.gov.au) or visit our project website.

## Murrk Ngubitj Yarram Yaluk (former Bellarine Basin)

We recently held a site tour at Murrk Ngubitj Yarram Yaluk (which means headwaters of continuous flowing river in Wadawurrung language). The 30 hectares at the former Bellarine Basin site are being transformed into an environmental and community space.

Following extensive Traditional Owner, community and key stakeholder engagement, we have developed a draft concept plan to demonstrate what the layout and site activities could look like. Our plan supports the cultural and environmental values of the site and Barwon Water's commitment to open the land for public and recreational purposes. Please register your interest in future tours by emailing [projects@barwonwater.vic.gov.au](mailto:projects@barwonwater.vic.gov.au).

## We've joined forces for a circular economy

Native seedlings

An exciting research project that examines the use of 'waste' known as alum sludge as a resource is underway in partnership with Deakin University and GenU.

A Deakin University 4th Year engineering student will use biochar and water treatment by-products, with potting mix, to grow native seedlings using the greenhouses at the GenU nursery.

Alum sludge is a by-product of Barwon Water's water treatment processes and has no current commercial use. We'll use these findings to help establish circular economy markets for the alum sludge that we produce.

## Project spotlight

Barwon Water is working with local landowners, the Corangamite Catchment Management Authority and specialised experts to remove willows and restabilise a section of the East Barwon River to support water security and waterway health. View further information on our website.

## Throwback Thursdays

This image of a spillway at No.1 Stony Creek Reservoir is dated December 1918. Over 100 years later the spillway is surrounded by trees, but can still function if required.

For more insights into Barwon Water's history, make sure to follow us on Facebook, Twitter and Instagram!



## Contact us

For all water or sewerage related emergencies and faults, we're available 24x7, every day of the year.

Please phone 1300 656 007.

For non-urgent enquiries, please contact us Monday to Friday between 8 am and 6 pm by web chat or via the 1300 number above.



# Climate Report

Judy Cameron

## What is happening in Australia with stored energy?

Australia's first commercial thermal energy storage system (TES) will be installed later this year at the Mars pet food factory in Wodonga. A "graphite battery" will use heat, from renewable electricity purchased from the grid when it's cheapest. This is stored in graphite blocks at temperatures of up to 900C. When heat is needed, water is run through pipes within the 'battery', and converted to high-pressure steam, at temperatures of 150-250C which is then used to cook pet food.

This is expected to reduce their gas consumption by 20% and the system can be scaled up.

"It will be the first major commercial application of thermal energy storage to displace gas in Australia, so it's a big deal," said Dominic Zaal, director of the Australian Solar Thermal Research Institute (ASTRI), which is funded through the Australian Renewable Energy Agency (ARENA).

"These systems are 30-year systems. Once paid back, it's pretty much free," he said. The time it takes for TES units to pay for themselves through gas savings depended on where a business was getting its electricity.

About 16 per cent of Australia's emissions are due to the burning of gas in industry for processes needing high temperatures (anything above 100C). Cutting these emissions requires more than installing solar panels and batteries, as electricity on its own can't generate high enough temperatures.

Meanwhile Finland have developed the world's first commercial "sand battery" which stores heat at 500 degrees Celsius for months at a time. It can be used to heat homes and offices and provide high-temperature heat for industrial processes. And the good news is the entire battery could be built in "any steel workshop".

Concentrated Solar Power is an old technology making a comeback.

CSP is so simple that the technology hasn't changed much in decades. Italy built the first CSP plant in 1968, and California installed the first commercial-scale array in 1981.

CSP plants also looked impressive: The popular "power tower" design featured a circular field of thousands of mirrors, focusing their light on the crown of a

central tower, which in some cases soared taller than 200 metres.

Spain, Morocco, South Africa, Israel and other countries are using CSP in their grids, while China has dozens of projects underway.

CSP cannot generate daytime electricity as cheaply as solar PV, but it has one advantage: built-in storage.

The heat from the Sun is stored in a medium such as molten salt. When the Sun goes down, this stored heat can be tapped to drive the turbine and generate electricity. This combination of generation and storage makes CSP "dispatchable", meaning the power can be sent to the grid when it's needed.

The Australian Renewable Energy Agency (ARENA) recently approved \$65 million in funding for a Sydney-based company, Vast Solar, to build the country's first commercial-scale CSP plant in Port Augusta, South Australia.

Unlike the "power tower" designs overseas, Vast Solar's design uses multiple, smaller towers to reduce the power lost if one tower goes down.

A drone photo of a solar plant with tall towers on each end.

Vast Solar's 1MW CSP pilot plant at Jemalong, near Forbes in NSW. (Supplied: Vast Solar)





**Notice:**

# Winchelsea Star AGM

by Tony Phelps, Secretary

You are formally invited to this year's Annual General Meeting for The Winchelsea Star Organisation Inc., aka The Star.

We'll review the past year, declare all Committee of Governance positions vacant, and then process nominations to Committee per our constitution. The AGM will be held in Winchelsea Community House's "Helen Verity" room, at 7:30pm on Tuesday 20th June. No need to RSVP, just turn up on the night.

In order to have a say and/or to nominate and/or to vote, you will need to be a Member of the Winchelsea Star. Joining is free, we only need your name, email address and signature. You can join on the night.

Note that we do not elect office-holders at the AGM - that is done by the new Committee at its first meeting. President, Treasurer, Secretary and Editor-in-Chief are required positions elected by majority votes from the Committee only.

If you have an interest in Winchelsea's community newspaper and how it's run & managed, please come along to the AGM to find out more.

We'd love to have more and different people on the Committee. We meet face-to-face only a few times a year, and many decisions are made via email for maximum convenience.



The Star would also love to hear from you if you have articles, news, reviews, or information of direct interest to the Winchelsea community. The more local content we can put in, the better! Please come along to the AGM to have a chat with Committee and Editors about your ideas.

See you then!

## SHED Talks add to Surf Coast Arts Trail lead-up

Three sheds across the shire will shine as part of the inaugural Surf Coast Arts Trail Development Program, which offers a valuable opportunity to help nurture creative careers.

Held in the lead-up to this year's Arts Trail, the program features three free SHED Talks where attendees can discuss both the business of making art and the underlying influence of place with established local artists:

- The relationship between creativity and commerce – how to sustain the integrity of your practice and make a life you love: Saturday 17 June at The Footy Shed, Deans Marsh Memorial Reserve from 1pm to 4pm. Veronica Phillips, Simon Holloway and Cara Johnson discuss the tension between the artist's inherent desire to create, and the everyday reality of making ends meet.
- From passion to profession – making a career out of your creative practice: Saturday 8 July at The Main Shed at Ashmore Arts, Torquay from 1pm to 4pm. For creatives looking to take that

next step to realise commercial opportunities, Nicola Cerini, Chela Edmunds and Rowena Martinich share how they took the leap.

- Place-based research – site specific practice and what it reveals about the past and present: Saturday 22 July at SHED300, Winchelsea from 1pm to 4pm. Delve into place and collaborative practice with Jane Bartier, Jenny Murray-Jones and Sylvia Maseyk, and how it can challenge assumptions.

"Each SHED Talk will be followed by networking and nibbles, giving artists the chance to get to know Surf Coast creatives they may not have met before, to forge relationships and potential collaborations – and of course to admire the new creative life given to each of these wonderful old sheds," Cr Rose Hodge said.

"As a Council, we acknowledge the value of arts and creativity across the shire, and want to empower local artists through initiatives like this so that art can continue to connect, inspire and empower."



Bookings for SHED Talks are essential via [surfcoast.vic.gov.au/ShedTalks](http://surfcoast.vic.gov.au/ShedTalks).

The 2023 Surf Coast Arts Trail will be held 5 and 6 August. Trailgoers can discover and purchase the work of the Surf Coast's thriving arts community – from hobbyists to professionals, craftspeople to artists, working in all types of mediums. Find out more at [surfcoast.vic.gov.au/surfcoastartstrail](http://surfcoast.vic.gov.au/surfcoastartstrail).

# Winchelsea Land and Rivercare

Planting time

Come and give a hand.

**First Saturday of the month. 9am – 10.30**

June 3<sup>rd</sup>, July 1<sup>st</sup>

Meet at Guye Reserve, Barwon Terrace

Everyone welcome.

Further details from

Rod 0428 549318 or Stewart 0428 672054



*direct*  
**TEMPORARY FENCING**

FOR HIRE - SUPPLIED & ERECTED - 7 DAYS  
GEELONG - BELLARINE - COLAC - SURF COAST  
PHONE CAM 0417 310 800

**DownRyte Excavations**

- Excavations
- Drilling and Piling
- Rock Placement
- Tree and Stump Removal



Sean Hunwick  
Mobile: 0409 447 288  
Email: downryte@activ8.net.au

**Kyeema**  
Rural Fencing Pty. Ltd.

Jason Armstrong & Jay Hawker

1080 Prices Lane, Ombesley, Victoria, 3241  
0419 565085 (Jason)  
0416 585817 (Jay)  
kyeemafam@kyeemafam.com.au

Also incorporating domestic and rural tree trimming services.

# Winchelsea Residents Walk for "Conquering the Corrugations in Life"

## The conversation we have to have

Resting now, in pain, but blissful pain.

No mental anguish, just a positive buzz brought on by a brisk walk from Winchelsea to Inverleigh. Good company, fair weather, a good cause." Conquering the Corrugations in Life".

Support for families in rural areas affected by loss of loved ones through suicide and for mental wellbeing. This inaugural Winchelsea walk brought to our town by Charlie Robert Earl.

To kick off the walk the Royal Flying Doctor Rep spoke of the need for us to speak to each other, to have those difficult conversations, to encourage us to share our feelings when things aren't going well, to tune in and listen – to hear what is being said. A big reason for this walk was to encourage those conversations.

So here goes; here is one small step in that conversation walk.

1. Does Winchelsea need to establish a group that would centre around allowing these conversations to happen, a drop in group especially for men, that is tailored to what rural and town men need and are happy to use, ( The RFDS Rep mentioned the need to especially get men talking and sharing their issues).

2. Does Winchelsea need more information sessions to help us all become better "citizen supporters", so we understand how to listen, to actively hear, to gain a greater understanding of loss through mental health issues. Armed with greater knowledge we may be more effective at dealing with loss or checking in with people.

This information needs to be imparted through a variety of ways, a many

pronged approach to capture a wider audience and reinforce the message.

So in summary

- More conversations wherever we can
- Greater education for the local community
- Citizen supporters
- A group for men especially, to get conversations happening that is tailored to suit the needs of our rural community.

So that's one of many beginnings to this conversation, now maybe it's your turn to "speak up" like a good working Kelpie backing sheep in the yards. Perhaps you will say how you see this issue.

Congratulations Charlie Earl on bringing this great endeavour to our town.

Go Kindly  
Jennifer.

## Winchelsea Hospital Auxiliary Next Auxiliary Meeting

Monday 5th June 3pm at Community Health Building H.R.H.

(please note change of venue)

The Op Shop will close at 2-30 on Monday 5th June due to meeting.

# Surf Coast Business Collective

At a time when small businesses are facing challenges with inflation, finding staff, affordable rentals and (still) recovering from Covid, we know it's tough.

A recent global report on the state of small business owner wellbeing by Xero found that a quarter of Australian small business owners said they could "at no time" access affordable counselling and support if needed. But it is out there.

The Small Business Bus visit to Surf Coast booked out quickly so we know this type of support is in demand. In this newsletter, we identify a couple of programs that can help you including:

Rural Financial Counselling Service, Digital Solutions and NewAccess by BeyondBlue

We are also inviting comment on a draft strategy to support our creative industries to flourish.

Stay safe and stay positive.

## Creative Places Strategy Draft for Comment

The Surf Coast is regarded as one of the most creative and innovative hotspots in the nation. Our lifestyle and connection to the natural environment have inspired a strong creative economy built from innovation and curiosity.

From dancers and designers to photographers, painters, graphic artists, and podcasters - local creative people are at the heart of the draft Creative Places Strategy and we are inviting your feedback.


We're expanding our definition of 'arts' to the entire creative economy. The strategy will help Council to prioritise resources and ensure that we best meet the needs of the Surf Coast arts communities.

Submissions on the draft Creative Places Strategy can be made on Your Say section of the Surf Coast Shire Website.

Please take the time to consider the draft Strategy and provide us with your feedback before 28 May.

# The Little Laundry

- Standard load washing available, \$25 next day pick up / delivery
- Free pick up / delivery 5km radius from IGA
- Blanket washing (household only no animal bedding)
- Ironing available
- Other options and deals available



admin@mirneeelectricalsolutions.com

Angus Leigh: 0484139858

**'THE ELECTRICAL EXPERTS'**

**MIRNEE**  
ELECTRICAL SOLUTIONS  
COMMERCIAL | DOMESTIC | INDUSTRIAL

## Antique Repairs

By **Doug Burns** est. 1976

- All Furniture
- French polishing
- Carving
- Veneering
- Wood Turning
- Porcelain



*Unusual Requests Welcome*

180 Barwon Terrace, Winchelsea

**0428 672 704**



St Vincent de Paul Society  
*good works*

Covering Meredith, Bannockburn, Anakie, Lethbridge, Inverleigh, Teesdale, Shelford, Elaine and Winchelsea

**52219170**

Monday - Friday 9am to 2 pm  
<http://www.vinnies.org.au>

A caring Catholic organisation offering "a hand up" to all people in need.



**mainly music**  
EST. 1991

Fun, Interactive music sessions for pre-school children (0-4 y.o.) and parents/caregivers

**When:** Mondays from 10 to 11 am (runs during school terms)

**Where:** St Thomas' Hall  
25 Barwon Tce.

To Enquire ring: **0407838256**

## Winchelsea Men's Shed



For The Community **Men's Shed Kindling/Offcuts** Bags of Kindling/timber offcuts are available for pick up from the Men's Shed on Wednesday's from 9.30 to 2.30. If you need a delivery made you can call Bill on 0438 083 373. The price for a bag of kindling is now \$7.00 (up from \$5.00).

**Nesting Boxes**  
Bird or animal nesting boxes are available from The Men's Shed. These can be made to order. Call in on any Wednesday to have a chat.

## AFS BOOKKEEPING



*"Your local bookkeeper"*

Bookkeeping  
Administration  
Payroll  
BAS Services  
Xero / Myob  
Reckon / Quickbooks  
Registered BAS Agent

**Angelique Snetselaar**  
**0456 077 485**

[info@afsbookkeeping.com.au](mailto:info@afsbookkeeping.com.au)  
[www.afsbookkeeping.com.au](http://www.afsbookkeeping.com.au)



## B & H Modifications

### Bob Verity

55 Stephenson Road  
Winchelsea 3241  
Ph: 5267 2467  
Mobile: 0411 610 678



## Industrial Sewing Machine Work

Caravan Annexes, Trailer Covers, Shade Sails, Alterations and Repairs to Camping and Tents. Clear PVC Blinds Repairs to CLEAN Horse Rugs No Job Too Small  
Email: [bobverity@southernphone.com.au](mailto:bobverity@southernphone.com.au)

# Winchelsea Churches



## Winchelsea Uniting Church

Hesse St, Winchelsea 3241  
uca.winchelsea@gmail.com  
0475 777 301  
Services 9.30am Sundays

## St John's Catholic Church

May Mass times: 5pm.  
May 6, 13, 20, 27  
Harding St, Winchelsea 3241  
Father Joseph Panackal  
0404598558

## St Thomas' Anglican Church

Barwon Tce, Winchelsea  
Rev'd A. Lynne Clarke  
stthomaswac@gmail.com  
0477 672 042



### Thought for the Week

Because He lives, we too shall live.  
We need these seven words above  
to help us to endure.

The changing world around us  
that is dark and insecure.

To help us view the present  
as a passing episode.

A troubled, brief encounter  
on life's short and troubled road.

**John Bader,**  
Accredited Lay Preacher

# St John's Catholic Church

Please note that we continue to celebrate weekly Mass at St John's Church at 5pm on Saturday evening.

With the colder weather we are moving over into the hall where we can have the heaters on for the months of June and July possibly August depending on the weather. Reconciliation or anointing can also take place before or after Mass, please speak to Father Joseph.

Our next Adoration Benediction and Reconciliation will be held on the 7th of July commencing at 4pm followed by Mass at 5pm.

Mass at Hesse Rural Health Services will be held on Thursday 27th of July. If family members would like their family members to be anointed, please contact Father Joseph on 52 681 230 or 0404 598 558.

Parents wishing their children to receive the Sacraments, baptism etc, please contact Anita on 0409 432 833. Registration takes place over at Bannockburn where Anita will provide the information etc. The child or children can then be baptised at Winchelsea.

The Parish office is open 9-30 to 4-30 on Wednesdays and Fridays. Father Joseph can be contacted on 0404 598 558 for a chat.

**Winchelsea Community Market**  
Shine Hall  
9am - 1pm

**MARKET dates for 2023**

1 <sup>st</sup> January	2 <sup>nd</sup> July
5 <sup>th</sup> February	6 <sup>th</sup> August
5 <sup>th</sup> March	3 <sup>rd</sup> September
2 <sup>nd</sup> April	8 <sup>th</sup> October
7 <sup>th</sup> May	5 <sup>th</sup> November

**Wightons Lawyers**

Dispute Resolution & Litigation  
Debt Collection  
Property Law  
Wills & Estates  
Powers of Attorney  
Business Law  
Family Law  
*By appointment only*

22 Willis Street, Winchelsea  
ph. 5221 8777

[www.wightons.com.au](http://www.wightons.com.au)

## Winchelsea Hospital Auxiliary Op Shop

**DONATIONS**  
We are now accepting donations

Donation days  
Sat 10 – 2. Mon 10 – 2.

**SALES**  
\$5 bag of books.  
Half price DVD's and CD's.  
\$1 per item on selected clothing.

**OP SHOP HOURS**  
Friday to Monday 10am to 3pm.

**IF THE FLAGS ARE OUT WE ARE OPEN**

## Women's Workshop

**Wednesdays 2:00 to 4:30pm.**

Learn practical home maintenance skills.

Learn basic woodworking design & construction techniques and hand tool use.

Discuss your ideas/needs with us.

SMS Stuart - 0468 358 282 at the Winchelsea Men's Shed  
email: winchmenshed@gmail.com

# COVID-19 Weekly Data

There were 10,642 COVID-19 cases reported in Victoria this week, an increase of 15 per cent on the previous week. The average daily number of new cases this week was 1,520, up from 1,325 last week.

The seven-day rolling average of patients with COVID in Victorian hospitals is 415, an increase of 23 per cent from last week. There are currently 431 COVID patients in Victorian hospitals. There are currently 15 COVID patients in intensive care. There are 3 cleared cases in ICU. There are 3 COVID patients on a ventilator. The seven-day rolling average of patients in intensive care in Victorian hospitals is 17. In the past three months, 2,860 COVID patients were hospitalised in Victoria.

Of Victorians aged 18 and over, 18 per cent have recorded a vaccination or COVID diagnosis in the past six months. This means 4.2 million Victorians are eligible for a 2023 booster dose.

Of Victorians aged 65 and over, 39 per cent have recorded a vaccination or COVID diagnosis in the past six months. Of Victorians aged 50 to 64, 19 per cent have recorded a vaccination or COVID diagnosis in the past six months.

A total of 63 COVID-related deaths were reported to the department in the past week. This represents an almost 18 per cent decrease when compared to the same period the previous month. An average of 9 deaths were reported each day in the past week.

The total number of reported COVID-related deaths in Victoria since the pandemic began is 7,779.

## Epidemiological summary

There has been a further increase in Covid hospitalisations, reported cases and quantitative wastewater levels over the past few weeks. This follows a recent plateau and indicates a significant period of transmission.

There has been substantial uptake of the 2023 booster vaccination, particularly among older Victorians. However, of those aged 65 and over, 61 per cent remain eligible and recommended for the

booster, which offers significant protection against death and hospitalisation.

Recent case notifications have increased most notably among school-aged children, as has been occurring for other respiratory viruses such as influenza and respiratory syncytial virus (RSV).

Covid transmission is being driven by the combination of waning immunity and the continual evolution of multiple Omicron recombinant XBB sublineages. This includes XBB.1.16, which has shown a sustained increase since March. The department continues to monitor trends through Victoria's comprehensive surveillance system.

Multiple Omicron XBB sublineages comprise 85 per cent of circulating variants from wastewater surveillance, similar to last week. This includes XBB.1.16 (29 per cent), XBB.1.5 (18 per cent), XBB.1.9.1 and XBB.1.9.2 (16 per cent), and other mixed XBB sublineages (22 per cent). Other variants include CH.1.1 (6 per cent), Delta/Omicron recombinant XBC (4 per cent), and other strains at low levels (<5 per cent each). There has been continued growth of XBB.1.16 in the last week.

## Steps to protect yourself and others

Protecting yourself from getting infected is the best way to protect yourself and the community. If you don't get Covid, you can't spread Covid.

These six steps can help you stay ahead of Covid:

**Wear a mask:** a high-quality and well-fitted mask can protect you and others from the virus.

**Get your 2023 booster:** new bivalent vaccines targeting Omicron variants are available at your GP or local pharmacy. To find out if you're eligible for your next booster, visit the Coronavirus website. Flu vaccines are also now available.

**Let fresh air in:** open windows and doors when you can – it reduces the spread of the virus.

**Get tested:** if you have symptoms, take a rapid antigen test.

**Stay at home:** if you have Covid, you

should stay at home for at least five days and until you have no symptoms.

**Talk to your doctor:** if you are at risk of falling very sick, you may be eligible for Covid and influenza medicines – and early testing and diagnosis are important. With expanded criteria, more people are now eligible for COVID medicines.

## 2023 boosters

Eligible Victorians who have not had a Covid vaccination or confirmed infection in the past six months can now receive their 2023 booster. This is irrespective of how many prior doses a person has received. Vaccination continues to provide the best protection against becoming severely unwell or dying from Covid.

For those not infected or vaccinated in the past six months, a 2023 booster is recommended for:

All adults aged 65 years and over

Adults 18-64 years who have medical comorbidities or disability with significant or complex health needs.

For those not infected or vaccinated in the past six months, a 2023 booster should be considered for:

Adults 18-64 with no risk factors for severe Covid

Children and adolescents aged 5-17 who have medical comorbidities or disability with significant or complex health needs.

Victorians are encouraged to book a free booster appointment through their local GP or pharmacy. You can find your nearest vaccination provider through the Health Direct Service Finder.

## RATs available through local councils

All Victorians are eligible to pick up two free packets of rapid antigen tests (RATs) through their local council.

To access the most up-to-date information on Covid in Victoria, visit the Victorian Coronavirus website or call the Coronavirus Hotline on 1800 675 398.

# Book now for 2023 BestWool/BestLamb conference

Agriculture Victoria invites sheep producers and the broader sheep industry to join us at the 2023 BestWool/BestLamb conference and pre-conference dinner in Bendigo on Monday evening and Tuesday, 19-20 June.

The pre-conference dinner will take place on the Monday evening at the All Seasons Resort Hotel in Bendigo to celebrate 25 years of the BestWool/BestLamb program. Mark Wales, former Special Operations Commander and winner of TV series Australian Survivor, will be the special dinner speaker.

As a former special operations commander, Mark is used to operating in dynamic, high stress situations where personal and team performance means the difference between life and death. Agriculture Victoria Senior Technical Specialist Lyndon Kubeil said

it's a chance to hear how Mark was able to use his experience leading an elite special forces team in combat to drive decision making and personal performance.

'The line-up of speakers the next day at the conference will inform, challenge and excite participants with the most up to date sheep industry research and information, as well as provide a great opportunity for networking.

'The format is a one-day event featuring concurrent sessions so participants can attend sessions that are relevant and of interest to them, plus trade displays and the Australian Wool Innovation (AWI) shearing race delivery demonstration,' Mr Kubeil said.

Presentations will include Dr Alex Ball, who will take a look back at the last 25 years of the sheep industry and provide his insights going forward for the next 25. Will Barton from Gundagai Meats will challenge those attending with lamb production of the future and Chris

Howie will make them think about the agent of the future and the producer/agent relationship, ensuring it adds value to your business.

Prof. Phil Hynd will update the audience on the latest developments with the wool bio-harvesting project and explore if this could be part of the solution?

Mr Kubeil said it's hard to highlight only a few of many great presentations, however also of note, Jim Walsh will give the latest on the brand-new oral lice control product, which could be an absolute game changer.

'Traditionally, the annual Bendigo conference attracts well over 300 participants, so we recommend you book early,' he said. Early bird registrations are on sale until 31 May.

For more information, please contact Lyndon Kubeil on 0418 532 085 or [lyndon.kubeil@agriculture.vic.gov.au](mailto:lyndon.kubeil@agriculture.vic.gov.au)

**mels**  
MELS DANCE CENTRAL

**2023**  
**DANCE ENROLMENTS**  
**NOW OPEN!**  
Winchelsea dance classes commence  
**1st February 2023**

**REGISTER NOW**

[www.melsdancecentral.com.au](http://www.melsdancecentral.com.au)

Pre-School - Adults  
Beginner - Advanced Levels

**WINCHELSEA R.S.L**

Winchelsea R.S.L invites you to attend R.S.L clubrooms  
First Sunday of each Month  
1pm - 3pm  
To view the extensive records of local service men and women.  
Items of interest.

R.S.L clubrooms are located in  
1914 - 1918 Memorial Grandstand  
At Winchelsea Football Club  
Main Entrance



**5234 6585 0417 385 984**  
 For all your septic tank, grease traps  
 and interceptor pits servicing.  
 Locally owned and operated

*All About* **Mowers & Chainsaws**

Repairs to all makes and models of ride on mowers, domestic mowers, pumps, chainsaws, brushcutters and small engines.

Trading Hours: Mon - Fri 8am - 5pm Saturday 8am - 12 noon

**5267 2266** Cnr Princes Hwy & Lennox St Winchelsea  
[www.allaboutmowers.com.au](http://www.allaboutmowers.com.au)  
[accounts@allaboutmowers.com.au](mailto:accounts@allaboutmowers.com.au)



**Simco Plumbing and Gasfitting**  
 24/7 Emergency service Ph:0400643976

- All General Plumbing and Gasfitting
- Roof and Gutters, Hot Water service changeover
- Split Systems, Air Conditioning and Wood Heaters
- Irrigation, Septic and Treatment plants
- Excavation, Bobcat and Tipper
- Rain water Tank installation
- Renovations and Extensions
- Gas conversions and servicing

Simon McGillivray  
 Lic: 109610. Free quotes, Fast and friendly service

**Water Delivery**



**WAZZA'S WATER CARTAGE**

Stainless Tanker Up to 22,000 ltr loads  
 Barwon Water Registered

**Domestic & Rural Water Supplies**

Call Wazza  
 Mob: 0428 877 260  
 Email: [wazza@wazzas.com.au](mailto:wazza@wazzas.com.au) Web: [wazzaswater.com](http://wazzaswater.com)

**Scott McDonald**  
**0423 413 829**



**S.J.R AUTOMOTIVE**  
ABN 942 853 848 287  
 13 ALANOR DRIVE, WINCHELSEA VIC 3841



**SOUTHERN GRAIN STORAGE PTY. LTD.**

AG SUPPLIES FERTILISER GRAIN STORAGE SEED CLEANING

**(03) 5267 2351**



**STS ACCOUNTING GROUP**

**Your Taxation & Superannuation Specialists.**

Winchelsea  
**5267 2673**  
[www.surftax.com.au](http://www.surftax.com.au)

**DAVIC AG**

**CONTRACTING AND EARTHMOVING**

For all your harvesting needs  
 Mowing, raking, round bailing, paddock prepping, spreading and sowing

Call Dave on **0417 579 973** Bambra



**Café La Hoot**

have you tried 'owl' coffee?

1 willis st [cafelahoot@gmail.com](mailto:cafelahoot@gmail.com) 0407 528 999



# Trees for bees blooms with new community planting grants

Habitat loss is one of the greatest threats to bees and other pollinators, with increasing urbanisation, along with severe bushfires and floods, reducing critical areas where bees forage and breed.

Now a new tree grants program is helping reverse this loss, providing small community groups across Australia with the opportunity to make a big difference for bees.

The Trees for Bees Community Tree Grants program is offering grants of up to \$500 to community organisations, schools, sporting clubs, gardening clubs and environmental groups to plant pollinator-friendly trees and shrubs in their local area.

The Trees for Bees Community Tree Grants is being run by When Bee Foundation in partnership with Carman's, and has been launched as part of the celebrations for World Bee Day, Saturday, 20 May 2023.

When Bee Foundation CEO Fiona Chambers said the grants will increase vital habitat for bees, while also raising awareness of the important role these

pollinators play in food security, with one in three mouthfuls of the food we eat depending on bees for pollination.

"The Trees for Bees Community Tree Grants will help reverse habitat loss, providing critical food sources and breeding habitat for bees," Ms Chambers said. "It also helps raise awareness within our communities about why planting pollinator-friendly trees is so important.

"It's a great opportunity to show people how individually we can make a difference, and collectively we can scale that impact."

Carman's General Manager of Marketing and Innovation Jed Simpfordorfer said joining forces with When Bee Foundation and sponsoring the Trees for Bees Community Tree Grants program was an obvious move.

"We share the same passion for supporting Australian communities and the importance of sustainable bee-friendly habitats," Mr Simpfordorfer said.

"This planting program will contribute to healthier bee populations to help support our suppliers and their local communities."

Twenty grants are available with applications open to community

organisations, not-for-profits, school groups, Landcare groups, sporting and gardening clubs and sustainability groups.

Applicants will be judged on their proposed project's benefit to pollinators, the area covered and community impact.

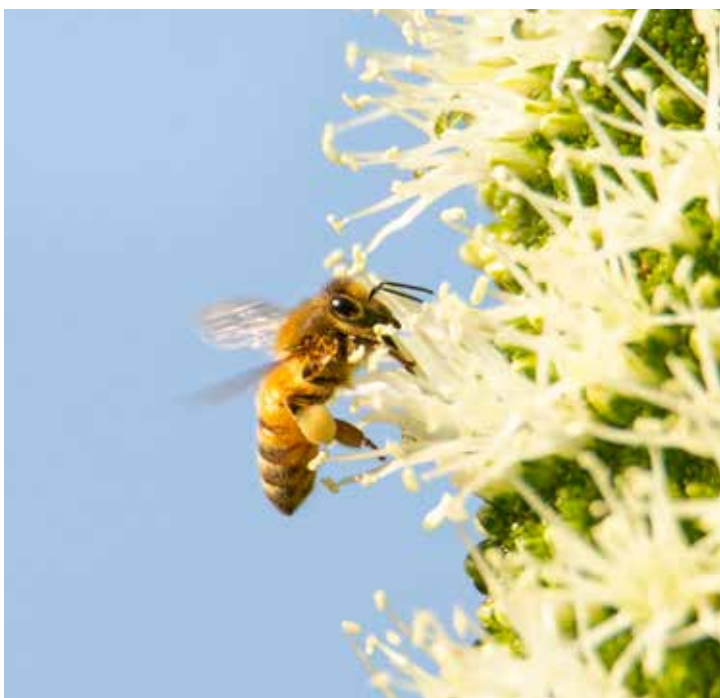
Ms Chambers said it was great opportunity to partner with Carman's, a company that shares the When Bee Foundation's values and was willing to roll up its sleeves to help bees.

"Carman's has a genuine interest in making a difference for the environment and for our pollinators," Ms Chambers said. "This helps us to talk to a whole new audience about the vital role bees play in our lives, and support them to take action in their gardens and community areas."

Applications are now open and close on 31 July 2023 5pm AEST.

To apply for a Trees for Bees Community Tree Grant visit [www.whenbeefoundation.org.au/communitytreegrants](http://www.whenbeefoundation.org.au/communitytreegrants)

Images by Louise Stockden and Gary Taylor.





**MRP Steelworx**  
 Matthew Partridge  
 p 0418 672 334  
 e mrpsteelworx@yahoo.com.au

**Welding Service**

- Onsite welding
- Farm maintenance
- Farm machinery & equipment repairs
- Cattle & sheep yards
- Custom built trailers
- Supply & install gates

**NO MATTER WHAT YOUR PROBLEM, DODDS ELECTRIX CAN DEFUSE THE SITUATION.**

RURAL, INDUSTRIAL, COMMERCIAL. DOMESTIC  
 PHONE 0438 887 360  
 EMAIL: DODDSY@FASTMAIL.FM  
 PO BOX 36 BIRREGURRA, VICTORIA 324  
 REC: 17520 ABN: 64 581 250 880



5234 6585 0417 385 984  
 For all your domestic & stock water.  
 Also available for road and civil construction  
 Local owned and operated.

**OZ TREES NURSERY & TREE PLANTING SERVICES**

- Affordable seedlings—over 200 species
- Complete plantation service—farm forestry, shelter, aesthetics
- Deep ripping & mound ploughing. Rotary bed forming
- Our experienced staff will help you select species for your site conditions and needs

Also available—tree planting tools, milk cartons, plastic tree guards & bamboo stakes

569 Warrowie Rd. Colac  
 P: 5233 6280 F: 5233 6393  
 E: info@oztrees.com.au  
 W: www.oztrees.com.au  
 Open Monday—Friday  
 9am—4:30pm



Phone OzTrees for professional advice,

**TRENCHES & HOLES PTY LTD.**



**PHILLIP ROBERTSON**  
 ☎ 0427 672 945  
**WINCHELSEA**

- General Earth Works
- Driveways
- Trencher
- Kanga Loader
- Grader
- Excavator Work (3.5 & 6.5 Tonne)
- Tip Truck
- Rock Breaker
- Post Holes & Shed Footings

A.B.N 74006896898



**WEBSITES**

GROW business  
 INCREASE reach  
 SAVE time



Find out what a website could do for you  
[winchwebsites.com.au](http://winchwebsites.com.au)  
 04 887766 20

**CONCRETER**  
 Alister Aitken

No job to big or small

- Driveways - Carports - Crossovers - Footpaths - Sheds Slabs - Colored Concrete - Concrete sealing - Exposed Aggregate - & more -

Call or text for a no obligation free quote

Servicing our local Winchelsea & Surrounding Areas

alaitken.aa@gmail.com or Alister - 0411 871 950

A.B.N 47 228 574 460

**Knuckey's Winchelsea**  
 Ph: 5267 2011

Knuckey's have in stock a complete range of batteries to suit tractor, heavy machinery, cars, utes

The largest range of the best oil for your vehicles—**CASTROL**—*'when only the best will do'*

The largest range of V belts.  
 A, B, C, D M Sections  
 Bolts and nuts for all occasions  
 Steel cut to size

# Barwon Water achieves outstanding customer perception results

The latest results of an Essential Services Commission (ESC) survey of 5,800 customers across Victoria's 16 water corporations have been published with Barwon Water ranked first across all four measures surveyed.

The ESC conducts the survey each quarter, asking customers to rate their water corporation on their performance on trust, reputation, value for money and overall satisfaction. The latest quarterly survey results represent a rolling average over the period from June 2022 to March 2023.

Barwon Water Managing Director Tracey Slatter was thrilled with the results, which came on the back of the ESC's Annual Water Performance Report late last year, which found that Barwon Water had issued the highest number of hardship grants to customers experiencing financial difficulty for the second consecutive year.

"We put a big focus on caring for our customers and contributing to the region's prosperity through the work we do so it's great to see that our customers recognise the impact we are trying to make," Ms Slatter said.

"We are particularly grateful to our customers who are always willing to provide us with feedback which help us deliver great outcomes. Our customers' generosity in taking the time to engage and provide insights helps us to shape our aspirations and ensure they are in line with community priorities."

This is the second time that Barwon Water has topped the charts on all four metrics with the water corporation attaining this achievement once before for the period between June 2020 and February 2021. East Gippsland Water is the only other water corporation to have achieved this with that water corporation topping the charts consecutively between June 2018 and March 2020.

Barwon Water also celebrated the success of two customer centre team

members – Liam Morris and Rose Schafer – who were recently recognised by Customer Service Benchmarking Australia with national awards for their commitment and focus on customers.

More information and detailed results are available on the ESC's website.

## Background

The Essential Service Commission's Customer Perception Survey is one of the ways the ESC reports on the water sector and is part of a suite of reporting aimed at driving improvements in the water sector to ensure customers get better outcomes.

The ESC is the economic regulator of the Victorian water sector. One of its regulatory functions is to monitor and to report publicly on the performance of the Victorian Government-owned water businesses.

## Plasterer & Painter

Daryl Hecker

Domestic & Commercial  
Renovations & Repairs  
Suspended Ceilings  
Dustless Sanding  
New Homes  
Extensions



Ph 0419 194 799

## Winchelsea Men's Shed



For The Community

51 Hesse Street

Every Wednesday from 9:30am

New members always welcome

For more detail contact:  
Ray Atkinson (Co-ordinator)  
0407 839 139

or  
winchmensed@gmail.com

Need a job done?  
Woodworking jobs,  
furniture repairs, small jobs.  
Drop in and talk to us.



Winchelsea  
Supermarket

Trading Hours

Monday to Saturday

8.30am to 7.30pm

Sunday

10am to 7pm

Ph: 5267 2676

29 Main St, Winchelsea

# Services and Activities in Winchelsea

## Free Community Service Advertisements



### TRAIN SERVICES

#### To Geelong

Mon - Fri

6:41 am, 7:59am, 11:34am,  
2:01pm, 7:37pm

Sat and Sun

9:35am, 1:36pm, 7:18pm

#### To Warrnambool:

Mon - Fri

9:29am, 2:56pm, (to Colac  
5:27pm), 6:45pm, 8:53pm

Sat and Sun

8:47am, 2:49pm, 8:37pm

### Country Women's Association



7pm Second Wednesday of Month  
Winchelsea Senior Citizens' Hall

### Bus to the Hub

For reservations on the weekly bus  
to the Eastern Reserve Hub,  
please phone 52671202.

### Surf Coast Mobile Library

Surf Coast Mobile Library  
parked in Hesse Street  
(outside Shire Hall) on Fridays  
between 2:00 and 5:00pm  
unless it is a Public Holiday.  
**Hesse St, Fridays, 2pm-5pm**

### Winchelsea Taxi

0429 672 888 or  
5267 2888

Wheelchair accessible  
10 seater bus available.

### Winchelsea SES

Meeting and training  
2nd Wednesday

Training 4th Wednesday

Visitors and inquiries welcome

0408 102 802



### Winchelsea and District

### Combined Probus Club

Meets 1st Monday of the month  
at 10am. Senior Citizens Rooms,  
Harding St, Winchelsea.

New members always welcome.

Enquiries Linda 0439 817 263.

### Winchelsea Playgroup

Every second Thursday 10am-12pm  
St Thomas Anglican Church Hall  
cnr Barwon Tce and Hopkins St, Winchelsea  
Contact: Melissa 0456181268  
Facebook - Winchelsea Playgroup 2019

**New families welcome**

### Winchelsea Girl Guides

Our Unit meets at the Catholic Church  
Hall, Harding St Winchelsea  
each Monday 4.30pm-6pm  
All girls 5yrs- 15yrs Welcome!  
Contact Yvonne Orchard 0448 672 630  
or Bonnie Stokes 0401 386 274

### 1st Modewarre and Winchelsea Scout Group

**Joey's:** Tuesdays of school term 5-6pm  
**Cubs:** Mondays of school term 6:30-8pm  
**Scouts:** Tuesdays of school term  
6:30-8:30pm

All at Modewarre Hall, Cape Otway Rd  
**Venturers:** Wed at Walton's Rd Venturer Den  
Contact Marie McPadden 0409 330147

### Winchelsea Transfer Station

#### Opening Hours

Monday	Closed
Tuesday	2pm-4pm
Wednesday	Closed
Thursday	2pm - 4pm
Friday	Closed
Saturday	1.30pm - 3.30pm
Sunday	9.30am - 12.30pm

**55 Cressy Road, Winchelsea.**

Accepts household garbage,  
mixed commercial and industrial waste,  
mixed construction and demolition  
waste. Accepts recyclable materials.  
Accepts one recycle bin two waste bins.  
Does NOT accept clean fill.

# Academy Award winner Martin McDonagh's *The Lonesome West* to sweep Torquay this winter

The Torquay Theatre Troupe is set to launch its second production for 2023 – *The Lonesome West* – premiering on 8 June at the Shoestring Playhouse, Torquay.

The dark Irish comedy written by Academy Award and BAFTA winner Martin McDonagh (*Banshees of Inisherin*, *In Bruges* and *Three Billboards Outside Ebbing Missouri*), tells a simple story of two brothers in rural Ireland squabbling over the inheritance left by their recently deceased father.

Stuck in the same house together now that their father has died, old antagonisms, Tayto crisps and religious figurines fan their poteen (bootleg liquor) fuelled hatred to flaring point. Instead of putting the past behind them, they use their apologies as new weapons to open old wounds. The local parish priest and a young girl from the community, also their poteen supplier, attempt to keep the brothers from quarrelling with hilarious and heartbreaking results.

Brought to the Torquay Theatre Troupe stage by local creative talent Glen Barton, this black tragicomedy is set to be played with sincerity and a wonderful adherence to the accent of western Ireland.

"I'm thrilled to be back in Torquay and working with the Torquay Theatre Troupe. I am a lover of all things Gaelic and honoured to be directing such a talented group of actors and crew to bring this fabulous, complex and macabre play to life," said Barton.

Taking to the stage will be seasoned Geelong theatre performers Jules Hart, Matthew Bradford as feuding and dysfunctional brothers Valene and Coleman, Torquay Theatre Troupe alumni Lachie Errey as the helpless and mixed-up Father Welsh and making her Torquay Theatre Troupe debut Tess Parker as the fresh and plucky Girleen. The ensemble will highlight characters that are complicated, yet recognisable and relatable.



Torquay Theatre Troupe is in its 22nd year of creating and bringing quality theatrical productions for the community to enjoy.

*The Lonesome West*, Shoestring Playhouse, Torquay, from 8 to 17 June.

Tickets on sale now: <https://www.trybooking.com/CHKFS>

Above (L to R): Tess Parker (Girleen), Lachie Errey (Father Welsh), Jules Hart (Valene) and Matthew Bradford (Coleman)



**WINCHELSEA  
CONCRETING**

· Driveways · Sheds · Decorative Concrete · Raft Slabs

**Robert Murphy**  
☎ 0438 235 237  
✉ [winchelseaconcreting@outlook.com](mailto:winchelseaconcreting@outlook.com)



## Winchelsea Community Facebook pages

### What's on in Winchelsea

**FLYERS, LOCAL EVENTS,  
SMALL BUSINESS,  
PROMOTING WINCHELSEA**

facebook.com/WhatsoninWinchelsea

### Winchelsea FREE

FREE ONLY

facebook.com/groups/winchelseafree

### Winchelsea Community Information AUSTRALIA

POSITIVE DISCUSSION

facebook.com/  
groups/207538644446972

### Winchelsea Classifieds 3241

FOR SALE ONLY

facebook.com/  
groups/216942861684082

### Winchelsea Lost and Found

LOST PETS

facebook.com/  
groups/768187693217518

### Winchelsea Op Shop

facebook.com/  
HospitalAuxiliaryOpShopWinchelsea

### Winchelsea Shire Hall (Community Centre)

facebook.com/WinchelseaShireHall

### Winchelsea Community House

facebook.com/  
winchelseacommunityhouse

### Winchelsea Coronavirus Community Support Group

facebook.com/  
groups/2676957719207927/

### The Green Winchelsea Residents

facebook.com/  
groups/515322772623126

### Growing Winchelsea Inc

facebook.com/growingwinch

### Winchelsea Star

facebook.com/TheWinchelseaStar

### Winchelsea Movie Club

facebook.com/winchelseamovies

### Winchelsea Community Market

facebook.com/100083362387611

### Winchelsea Land and River Care Group

facebook.com/envirowinchelsea/

### Upper Barwon Landcare Network

facebook.com/UpperBarwonLandcare

### Winchelsea & District Historical Society Inc.

facebook.com/  
Winchelseaanddistricthistoricalsociety/

### Winchelsea Wildlife Shelter

www.winchelseawildlifeshelter.com/

### SCARS - Surf Coast Animal Rescue Service

facebook.com/groups/415211698950674

### Winchelsea Gardeners

facebook.com/  
groups/779878518703025

### Winchelsea & District Historical Society

facebook.com/  
Winchelseaanddistricthistoricalsociety/

### Winchelsea Repertory Society Inc

facebook.com/winchrep/

### Winchelsea Globe Theatre

facebook.com/Winchelsea-Globe-  
Theatre-164790897641678

### Winchelsea Uniting Church

facebook.com/winchelseaunitingchurch

### St Thomas' Anglican Church

facebook.com/StThomasWinchelsea

### St John the Baptist Catholic Church

facebook.com/pages/Winchelsea-  
Catholic-Church/101775670163180

### Winchelsea Mainly Music

facebook.com/  
groups/668500343953191/

### Winchelsea Health Club

facebook.com/WinchelseaHealthClub

### Winchelsea Playgroup 2019

facebook.com/  
groups/551663435367031

### Winchelsea Girl Guides

www.guidesvic.org.au/

### Winchelsea/Modewarre Scouts

facebook.com/1stModewarreScouts

### Winchelsea Fire Brigade

facebook.com/winchelseafirebrigade/

### Winchelsea SES

facebook.com/groups/WinchSES

### Country Women's Association - CWA Winchelsea Branch

facebook.com/pg/CWAWinchelsea/

### Winchelsea Bowls Club

facebook.com/Winchelsea-Bowls-  
Club-533783333344345/

### Winchelsea Blues Cricket Club

facebook.com/groups/8999049476/

### Winchelsea Blues FC

facebook.com/WinchelseaFNC/

### Mel's Dance Studio

facebook.com/melsdancecentral

### Winchelsea Golf Club

facebook.com/winchelseagc/  
facebook.com/  
groups/1324943804676697

### Winchelsea Kyokushin Karate Club

facebook.com/winchelseakyokushin

### WYLD Winchelsea Youth Leisure and Drop in

facebook.com/  
groups/569737570027065/

### Lions Club of Winchelsea

facebook.com/LionsWinchelsea

### Winchelsea Probus

facebook.com/893535194971083  
10am 1st Mon month at Sen Citz Hall



## Farmers, lease your land for passive income

Lease your land for a solar farm and receive an additional passive income for 30 years and up to \$50,000 upon construction, all the while diversifying your income and increasing revenue.

Call Jesse: (03) 4420 9661  
jesse@bnrgleeson.com.au

We take care of everything for you

# Code For Corporate Citizenship:

## Global Launch In Geelong

On 25 May 2023, Geelong will be the site for the worldwide launch of a new idea to combat global warming and climate change, The Code for Corporate Citizenship (The Code), a proposed amendment to the corporate law to make company directors more responsible for the effects of their companies on the environment.

At Geelong Library, an alliance of local climate groups will co-host a talk by Robert Hinkley, originator of The Code, and author of Time to Change Corporations: Closing the Citizenship Gap.

“We see The Code as a simple but effective approach to properly deal with the climate emergency. The idea is to balance directors’ duties by legally requiring them to be good corporate citizens. It may sound like a small change, but this could potentially have a game-changing impact on humanity’s efforts to reduce global carbon emissions,” said Mik Aidt, director of Centre for Climate Safety.

Vicki Perrett, Climate Advocate for Geelong Sustainability, said she was proud that Geelong was selected for the launch:

“Geelong stands at a crucial crossroad and the community is calling for urgent effective climate action. The Climate Emergency Declaration campaign was

launched from Geelong, Adelaide and Melbourne in 2016. It has gone onto become a global movement with 2,329 councils in 40 different countries as well as 18 governments declaring a climate emergency – a figure still rising and now including 1 billion citizens. Adoption of The Code could become the next big step.”

A dual Australian-American citizen, Robert Hinkley is a retired corporate lawyer with over 20 years’ experience advising large companies here and in the United States. He was a partner in the leading US firm Skadden, Arps, Slate, Meagher & Flom, as well as being the principal advisor to the US Department of Justice in its investigations of investment banks for their role in the global financial crisis. These investigations recovered penalties and fines of more than \$US 65 billion.

Mr Hinkley said: “All corporations are formed under government enacted laws. They should not be permitted to cause severe damage to the environment. Government’s job is to protect the public interest not give license to companies to destroy it. The Code will require all company directors to safeguard the environment from severe damage.”

The event will take place on the 5th floor of the Geelong Library and Heritage Centre at 5:30pm on Thursday 25 May 2023. General admission is \$5.00. Tickets are available through Eventbrite

## Winchelsea Taxis is now Surfcoast Taxis

Our fleet of vehicles are growing to all late models and we are covering an extended area including Winchelsea, Colac, Bannockburn, Inverleigh, Great Ocean Road and Geelong.

We have a fleet of 10 seater Maxi Vans, all with capacity to carry wheelchairs.

**Surfcoast Taxis Pty Ltd**  
**All Bookings: 0408 325 992**  
**Fax: 5267 2699**  
**Email: bannotaxis@gmail.com**  
 (Admin or Stan 0429 672 888)  
 66A Batson Street  
 Winchelsea 3241



Accounts NDIS provider. TAC, DVA etc

NDIS provider number 4050001044  
 NDIS provider number 4050001048

Book your next ride with **smartHAIL**

Book Track Pay Rate

Download on the App Store | GET IT ON Google Play



### SIMPLE STORAGE SOLUTIONS

- Personal & Business Storage
- Boat, Caravan & Vehicle Storage
- High Security Premises
- Individually Alarmed Units
- Electric Gate Access
- 7 Day Access & CCTV

### YOUR STORAGE PROBLEMS SOLVED

**5267 3116**  
 6 ALSOP DRIVE, WINCHELSEA 3241



# Lupton BUILDERS

SPECIALISING IN QUALITY

REGISTERED  
Building Practitioner

<ul style="list-style-type: none"> <li>• NEW HOMES</li> <li>• ALTERATIONS</li> <li>• CARPORTS</li> <li>• BATHROOMS</li> </ul>	<ul style="list-style-type: none"> <li>• EXTENSIONS</li> <li>• DECKS</li> <li>• VERANDAHS</li> <li>• WINDOW REPLACEMENTS</li> </ul>	<ul style="list-style-type: none"> <li>• RENOVATIONS</li> <li>• PERGOLAS</li> <li>• RE-CLADS</li> </ul>
---	---	---

LEIGH LUPTON

0438 840 104

CHRIS LUPTON

0407 681 514

LEIGHLUPTON17@GMAIL.COM

EST. 1977

## TANGO

Pet Grooming

RONNIE.

Winchelsea's  
pet groomer.

For appointments

0436 008 989

tangopetgrooming@gmail.com

## HF RICHARDSON

PROPERTY

Servicing all your real estate needs

Ken McDonald **0418 524 150**

Residential | Rural Lifestyle | Agricultural Farms

CHARLES STEWART

rma.network Accredited Member

Charles Stewart & Company are leading livestock and real estate service providers covering Victoria's south west

	LIVESTOCK	
Jamie McConachy	0418 522879	  
Peter McConachy	0408 522878	
Matt Nelson	0428 315400	
Gerard Bohan	0400 005541	
Lachie Barclay	0438 346291	
John Thornton	0408 526367	
Dougal McIntyre	0439 575612	
Ross Spitty	0419 539717	
	REAL ESTATE	
Michael Stewart	0418 520467	
Daryl Osborne	0419 388341	
Anthony McDonald	0418 593597	
Gerard Bohan	0400 005541	
Stephen Lugg	0417 556098	
Josh Lamanna	0417 586032	

Office  
56 Bromfield Street, Colac  
www.charlesstewart.com.au

Green Lead Electrical

Connecting you to a greener future  
NSIC 03018

0467 097 101

Servicing Geelong & the Surf Coast

Specialising in all residential electrical work including:

- Switch board & lighting upgrades
- Outdoor lighting
- Electrical safety checks
- Energy efficient LED lighting
- Ceiling sweep fans & ventilation
- Energy saving advice

Phone Martin Wilkinson:  
**0467 097 101**

greenlead@outlook.com

132268-0618-14

# MGT BUILDING & CONSTRUCTION

NEW HOMES | EXTENSIONS | RENOVATIONS

Ph: 0409 433 687

REGISTERED  
Building Practitioner





eldersrealestate.com.au



## You're in Safe Hands With Peter Lindeman Delivering Exceptional Results for Over 20 Years

If you're thinking of selling a Rural or Lifestyle acreage property on the Bellarine, the Barwon or beyond then think Peter Lindeman. Peter spent 20 years managing farms before jumping the fence to sell them; and over the last 20 years he's helped clients achieve extraordinary results, more often than not surpassing their expectations. Why not let Peter show you how he can help you achieve an outstanding result for your property.

**Peter Lindeman**  
RURAL AND LIFESTYLE SALES MANAGER – ELDERS GEELONG



**P: 0418 525 609 E: peter.lindeman@elders.com.au**



### WARNOCOORT 12 TRASKS ROAD

★★★★★ **Seller review**

“ The sale of Kelowna was quick, painless and brilliantly handled by Peter Lindeman, from Elders Geelong, and we can't thank him enough. Peter came highly recommended, by a friend, and he certainly lived up to his impressive reputation. He's such a lovely chap. Easy to chat with. Has years of experience. And genuinely cares about his clients and buyers. Plus he turned a load of heritage quinces, from our orchard, into the most delicious jelly and paste. Is there no end to the man's talents! If you think you can't use an Agent from out of town, think again. We did. And we couldn't be happier. Elders are very lucky to have this Geelong Team! ”

★★★★★ **Buyer review**

“ Peter Lindeman was an absolute gentleman throughout the negotiation's for a property I recently purchased in the Western District. It was a difficult few days to get through but Peter was kind caring and honest! What more can you ask for from the agent when purchasing something that means so much to you. I'd like to take this opportunity to thank you sincerely Peter for helping me achieve my dream of owning this property that I have loved and held so dear to me since I was a small boy :- ) ”



### BARRABOOL 215 ANDERSONS ROAD

★★★★★ **Seller review**

“ Peter was our agent for a farm sale. We had engaged him with other transaction, and as with the others he did not disappoint. He gave us all he had to get us a great result. Having been in a large number of property transactions over the years he is unquestionably the best agent we have had.

We couldn't recommend him highly enough. ”

★★★★★ **Buyer review**

“ We really couldn't say enough about how professional/helpful Peter Lindeman was during and after our search for a property in Victoria. We were very particular what we wanted and where; location is key! Peter Listened to what we wanted never wasted our time showing us properties that didn't fit our needs. Tricky negotiation, but thanks to Peter it all turned out very well. ”



**Breeze Health and Wellness, Exercise Physiology**  
**32-34 Main Street, Winchelsea (old post office)**  
 Chronic disease? Injured? Wanting improved athletic performance?  
 We can help you manage, rehabilitate and prevent many common ailments through movement.  
 Speak with your GP about a referral for a care plan.  
 Private health accepted - no referral needed.  
 Call Brenton on 0428 790 023 to discuss or email breezehealthandwellness@gmail.com  
 Exercise is Medicine, Motion is Lotion. Move with Ease at Breeze.



**Moriac Veterinary Clinic**  
**0447 781 089**  
**PHONE 24 HOURS**  
 784 Hendy Main Road Moriac  
 info@moriacvet.com  
 www.moriacvetclinic.com.au  
**HOURS // Monday - Friday: 8am - 5pm**



**Aquafire Healing**  
 Transforming Your Health  
 Through the Healing Power of Nature  
**NATUROPATHIC MEDICINE • HERBAL MEDICINE**  
**NUTRITIONAL MEDICINE • HOMOEOPATHY**  
**REMEDIAL MASSAGE**  
 www.aquafirehealing.com  
 Ph: 0415 530 276



**Winchelsea Medical Clinic**  
**Located at 36 Main Street, Winchelsea 3241**  
 For any enquires or bookings please contact the clinic on 5292 8028.  
 Or visit our website: www.winchmc.com.au  
Opening Hours:  
 Monday - Friday 8:00am - 5:00pm  
 (Monday Evening Clinics available and selected Saturdays)

Our clinic accepts online bookings via the app called HotDoc.  
 Download the app on the App Store or Google Play or head to our website.



**WINCHELSEA LIONS CLUB**

**PAPER RECYCLING**

**Paper depot rear of Senior Citizens Rooms Harding Street NEWSPAPERS, MAGAZINES, PHONE BOOKS WANTED**



**RAISING FUNDS FOR OUR TOWN & DISTRICT**  
**5267 2011 or 0408 520 606**



**Water Supply Specialists**  
**WATER SOLUTIONS**  
 74 Dennis Street, Colac  
 5231 1861

**ALL THINGS WATER:**  
 - PUMPS - PIPES  
 - FITTINGS - TANKS  
 - POOL CHEMICALS  
 - IRRIGATION  
 - WATER PURIFICATION  
 - SOLAR - REPAIR




**M & L DRAYTON**  
**PLUMBING SERVICES**

REG No 24356 C/A No C02594

- Domestic and Rural Plumbing
- Roofing
- Sewerage & Septic
- LPG & Natural Gas Connections
- Motorised Drain Cleaning
- Backhoe Hire

**Phone Mark 5288 7244**  
**PO BOX 98 WINCHELSEA 3241**  
**Mobile 0428 520 142**

- Domestic and Commercial hire equipment
- Industrial welding gas
- Digging and Earthmoving equipment
- New trailers and trailer repairs
- Firewood
- Stockists of Royal Oil Lubricants products
- LPG for domestic and commercial requirements

Give Chris and the Team a call on **5232 1177** or email [info@colachire.com.au](mailto:info@colachire.com.au)  
[www.colachire.com.au](http://www.colachire.com.au)  
**101 Wallace St Colac 3250**





**Winchelsea  
AUTO  
SERVICES**  
*One stop auto shop*  
17 Alsop Drive

- ❑ LOG BOOK SERVICE
- ❑ AUTO ELECTRICAL
- ❑ TOWING
- ❑ AIR CONDITIONING
- ❑ CLUTCH & BRAKES
- ❑ TYRES
- ❑ WHEEL ALIGNMENT
- ❑ BATTERIES

**CAR, TRUCK REPAIRS  
& Roadworthys**

**PH: 5267 3001**

**Mob: 0417 137 457**

**Pixie Wash**  
Mobile Doggie Care  
Dogs up to 20kg  
**Pixie Heath**  
0417 586 080

**Winchelsea Towing**  
**24 Hour Accident and Breakdown Towing**  
**0418 535 402**



**NATURAL GAS  
CONNECTIONS**

**M. & L DRAYTON  
PLUMBING SERVICES**

**YOUR LOCAL LICENSED**

- PLUMBERS (24356)
- GAS FITTERS
- GAS CONVERTERS
- CARBON MONOXIDE TESTING

**MARK 0428 520 142**

**R.A.K. DAVIS  
& SONS**

**CARTAGE  
CONTRACTORS**

**WINCHELSEA**

**SUPPLIER OF ALL QUARRY MATERIALS, TRUCK HIRE**

**CARTAGE OF GRAIN, LIME, GYPSUM & SUPER**

**LANDSCAPE & GARDEN SUPPLIES**

**56 WILLIS ST, WINCHELSEA**

**Ph – 5267 2094**

**Ryan – 0438 672 281**

**Email: rakdavis@bigpond.com**

**Funeral Planning**

*Working out what is best for you.*

Prepaid Funerals, Funeral Bonds, Pay-by instalments...

There are many options and its important to make the right choice.

Alyson Burchell will be available by appointment to answer any questions about funerals and planning ahead.



For more information or to make an appointment contact Sue on 5221 4788

Tuckers Community Office,  
Surf Coast Taxation Services, 22 Willis Street,  
Winchelsea

**First Tuesday of the Month,  
by appointment 10.00am - 12.00pm**

*Caring for families since 1883*

**Tuckers**  
Funeral & Bereavement Service  
*...for a life worth celebrating*

5221 4788  
[www.tuckers.com.au](http://www.tuckers.com.au)

- All your caulking & waterproofing needs
- Bathrooms (files, mirrors, vanities, bathtubs, shower)
  - Kitchens • Flooring (skirtings, tiles, floorboards)
  - Splash Backs • Pool Joints • Brick Work
  - Expansion Joints
- Phone/Text/Email: [luke@westcoastsealants.com](mailto:luke@westcoastsealants.com)



**LUKE BATH**  
CAULKING CONTRACTOR

0406 845 098  
[westcoastsealants.com](http://westcoastsealants.com)

PROVIDING QUALITY WORK SINCE 1995



# Refinance, renovate or just re-evaluate

With interest rates on the rise, there's never been a better time to review your home loan.

Enquire online at [bendigobank.com.au/healthcheck](http://bendigobank.com.au/healthcheck) or call your nearest branch on 03 5289 1787.

Community Bank - Winchelsea & District

**Bendigo Bank**

\*Roy Morgan Single Source (Australia), December 2022. All loans are subject to the bank's normal lending criteria. Fees, charges, terms and conditions apply. Please consider your situation and read the Terms and Conditions, available online at [www.bendigobank.com.au](http://www.bendigobank.com.au) or upon request from any Bendigo Bank branch, before making a decision. Bendigo and Adelaide Bank Limited ABN 11 068 049 178 AFSL 230879 (167698-1734881) (05/22) OJT\_29309970, 26/04/2023

# Winchelsea Star

Since 1977

ISSN 2202-6851



## GREAT Bundle Deal on Bosch Hot Water... FROM ELGAS

Buy any Bosch Bluetooth continuous flow hot water model - 16Litre, 20Litre or 26Litre and Receive \$100\* in Elgas bonus LPG gas credits

\*For more details: [www.elgas.com.au/appliances/bosch-cpflow-16-20-26-lpg-bundle-sale](http://www.elgas.com.au/appliances/bosch-cpflow-16-20-26-lpg-bundle-sale)

AND... for new customers, an additional \$80 WORTH OF LPG GAS CREDITS\*\* when you open a new LPG Gas account with Elgas

\*\*Further details can be viewed at [www.elgas.com.au](http://www.elgas.com.au)

Ask about the Elgas Easy Payment Plan - 12 months interest free\*\*\* on selected LPG appliances

\*\*\*Further details can be viewed at: [www.elgas.com.au/epp](http://www.elgas.com.au/epp)

Automatic tanker gas bottle refill OR gas bottle exchange refill is available for home or business...

Call today or visit our website for our many customer benefits and latest offers

**131 161** **ELGAS**  
[www.elgas.com.au](http://www.elgas.com.au)

# M&B WOOD PLUMBING

Call Matt - 0418 319 357  
[mbwoodplumbing.au](http://mbwoodplumbing.au)

**Servicing Winchelsea & surrounds**

- General maintenance & blocked drains
- Gas fitting & hot water service upgrades
- New homes & renovations

Commercial | Industrial | Domestic

# HAMILTONS

Truck & Bobcat Hire  
Give Aaron a Call  
**0438 438 623**

Chiropractic - Remedial Massage - Myotherapy - Sound Healing - Breathwork

## Chiropractic care for:

- Stress & Anxiety
- Body Aches & Tension
- Poor Sleep
- Pain Management
- Family Wellbeing
- Health Longevity

03 5267 2240 Shop 4/21 Hesse St Winchelsea <https://onebodychiropractic.com.au/>